

Data Path : Z:\pestpcbsrv\HPCHEM1\ECD_Q\Data\PQ060320\
 Data File : PQ048023.D
 Signal(s) : Signal #1: ECD1A.ch Signal #2: ECD2B.ch
 Acq On : 03 Jun 2020 17:21
 Operator : AJ\MA
 Sample : L2839-25
 Misc :
 ALS Vial : 57 Sample Multiplier: 1

Instrument :
 ECD_Q
 ClientSampleId :

Integration File signal 1: autoint1.e
 Integration File signal 2: autoint2.e
 Quant Time: Jun 04 01:04:15 2020
 Quant Method : Z:\pestpcbsrv\HPCHEM1\ECD_Q\Method\PQ052720.M
 Quant Title : GC EXTRACTABLES
 QLast Update : Wed May 27 17:33:08 2020
 Response via : Initial Calibration
 Integrator: ChemStation

Volume Inj. : 2 µl
 Signal #1 Phase : ZB-MR1 Signal #2 Phase: ZB-MR2
 Signal #1 Info : 30Mx0.32mmx 0.50µ Signal #2 Info : 30M x 0.32mm x 0.25µm

Compound	RT#1	RT#2	Resp#1	Resp#2	ng/ml	ng/ml

System Monitoring Compounds						
1) SA Tetrachlo...	5.313	4.295	150.9E6	71032061	21.125	21.286
2) SA Decachlor...	11.603	9.671	119.6E6	57737436	16.750	15.965
Target Compounds						
9) L2 AR-1221-2	5.671	4.653	2969694	998780	52.690	37.824 #
12) L3 AR-1232-2	6.392	0.000	2512170	0	35.361	N.D. #

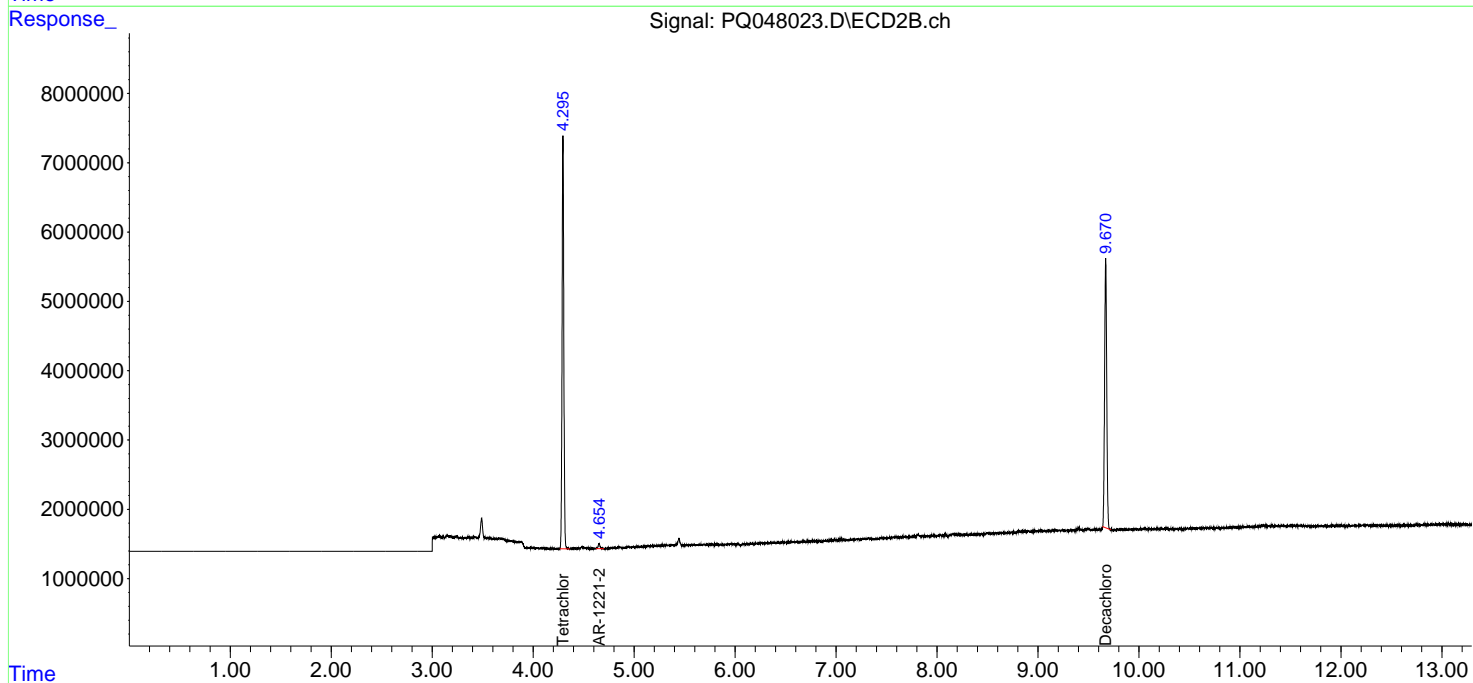
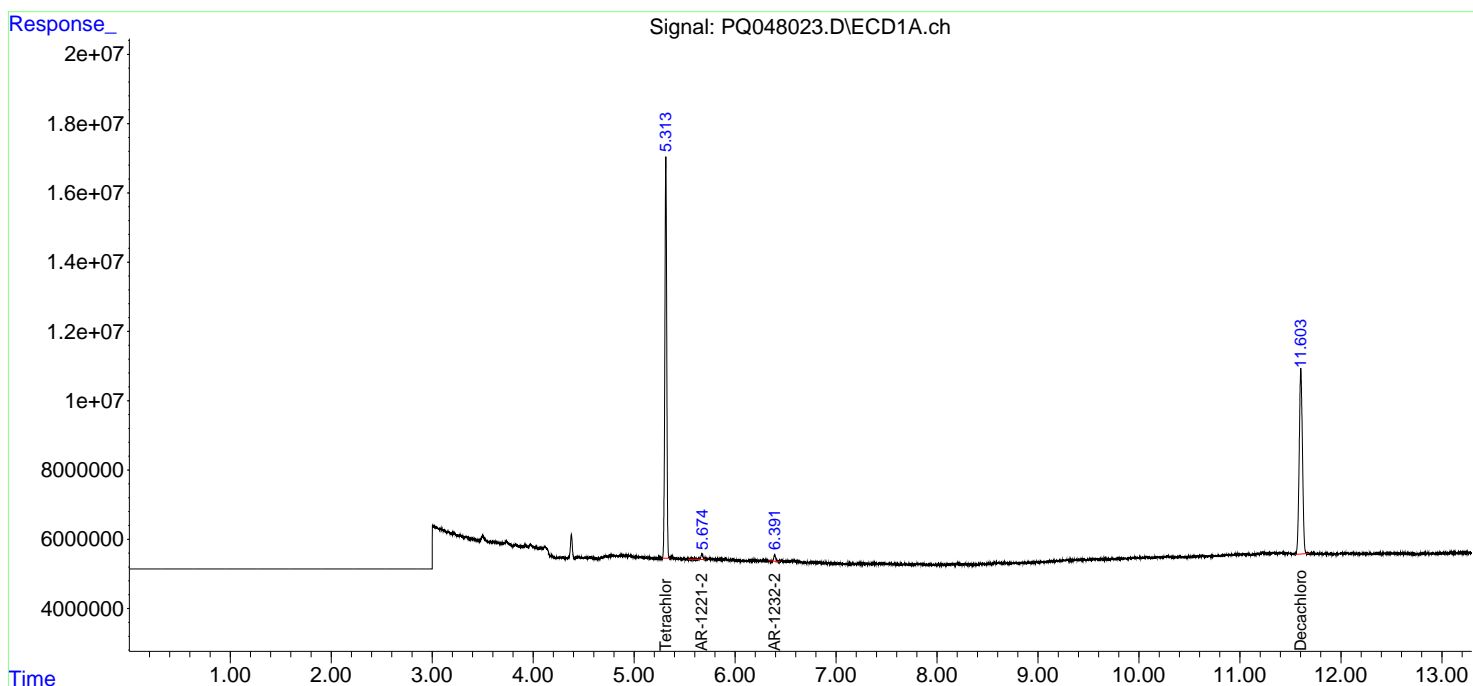
(f)=RT Delta > 1/2 Window (#)=Amounts differ by > 25% (m)=manual int.

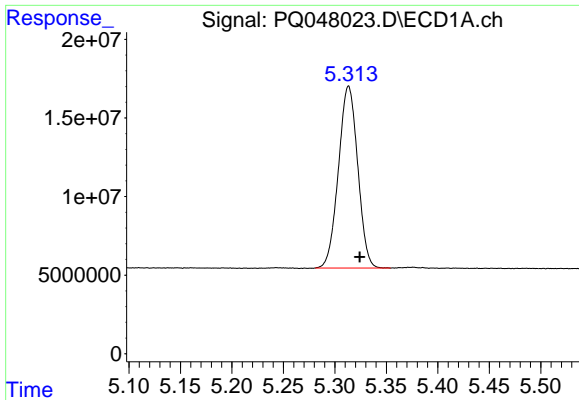
Data Path : Z:\pestpcbsrv\HPCHEM1\ECD_Q\Data\PQ060320\
 Data File : PQ048023.D
 Signal(s) : Signal #1: ECD1A.ch Signal #2: ECD2B.ch
 Acq On : 03 Jun 2020 17:21
 Operator : AJ\MA
 Sample : L2839-25
 Misc :
 ALS Vial : 57 Sample Multiplier: 1

Instrument :
 ECD_Q
 ClientSampled :

Integration File signal 1: autoint1.e
 Integration File signal 2: autoint2.e
 Quant Time: Jun 04 01:04:15 2020
 Quant Method : Z:\pestpcbsrv\HPCHEM1\ECD_Q\Method\PQ052720.M
 Quant Title : GC EXTRACTABLES
 QLast Update : Wed May 27 17:33:08 2020
 Response via : Initial Calibration
 Integrator: ChemStation

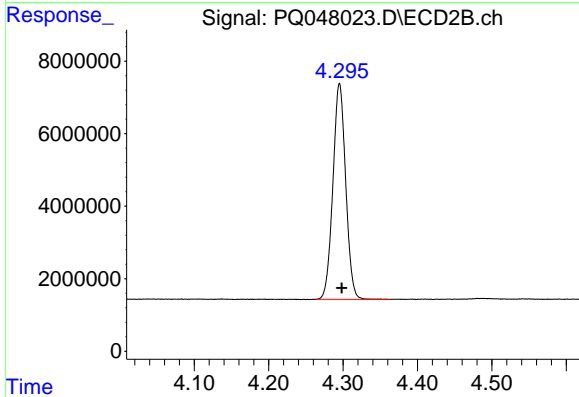
Volume Inj. : 2 µl
 Signal #1 Phase : ZB-MR1 Signal #2 Phase: ZB-MR2
 Signal #1 Info : 30Mx0.32mmx 0.50µ Signal #2 Info : 30M x 0.32mm x 0.25µm



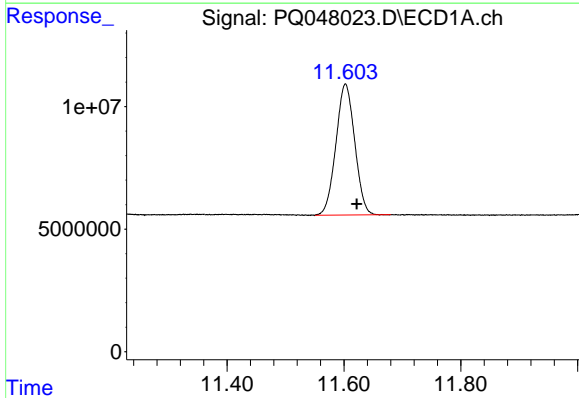


#1 Tetrachloro-m-xylene
 R.T.: 5.313 min
 Delta R.T.: -0.011 min
 Response: 150947367
 Conc: 21.13 ng/ml

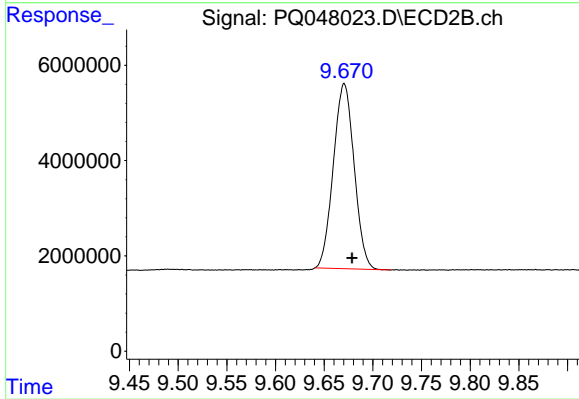
Instrument :
 ECD_Q
 ClientSampled :



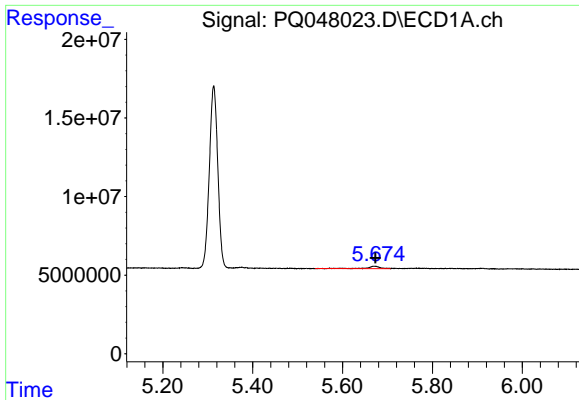
#1 Tetrachloro-m-xylene
 R.T.: 4.295 min
 Delta R.T.: -0.003 min
 Response: 71032061
 Conc: 21.29 ng/ml



#2 Decachlorobiphenyl
 R.T.: 11.603 min
 Delta R.T.: -0.020 min
 Response: 119629940
 Conc: 16.75 ng/ml

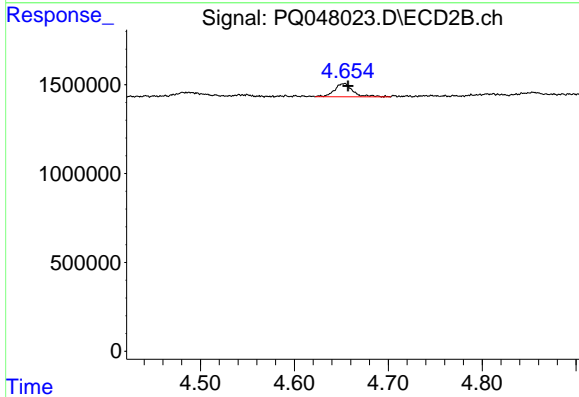


#2 Decachlorobiphenyl
 R.T.: 9.671 min
 Delta R.T.: -0.008 min
 Response: 57737436
 Conc: 15.97 ng/ml

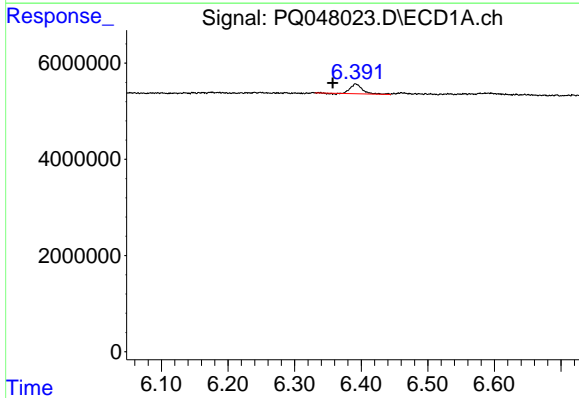


#9 AR-1221-2
 R.T.: 5.671 min
 Delta R.T.: -0.002 min
 Response: 2969694
 Conc: 52.69 ng/ml

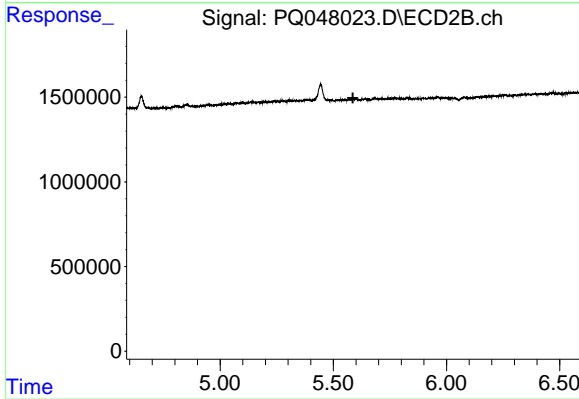
Instrument :
 ECD_Q
 ClientSampleId :



#9 AR-1221-2
 R.T.: 4.653 min
 Delta R.T.: -0.004 min
 Response: 998780
 Conc: 37.82 ng/ml



#12 AR-1232-2
 R.T.: 6.392 min
 Delta R.T.: 0.035 min
 Response: 2512170
 Conc: 35.36 ng/ml



#12 AR-1232-2
 R.T.: 0.000 min
 Exp R.T. : 5.586 min
 Response: 0
 Conc: N.D.