

Data Path : Z:\pestpcbsrv\HPCHEM1\ECD_Q\Data\PQ060320\
 Data File : PQ047995.D
 Signal(s) : Signal #1: ECD1A.ch Signal #2: ECD2B.ch
 Acq On : 03 Jun 2020 09:22
 Operator : AJ\MA
 Sample : L2839-12
 Misc :
 ALS Vial : 34 Sample Multiplier: 1

Instrument :
 ECD_Q
 ClientSampleId :
 NM6-COMP-2020-0-6

Integration File signal 1: autoint1.e
 Integration File signal 2: autoint2.e
 Quant Time: Jun 03 13:32:06 2020
 Quant Method : Z:\pestpcbsrv\HPCHEM1\ECD_Q\Method\PQ052720.M
 Quant Title : GC EXTRACTABLES
 QLast Update : Wed May 27 17:33:08 2020
 Response via : Initial Calibration
 Integrator: ChemStation

Volume Inj. : 2 µl
 Signal #1 Phase : ZB-MR1 Signal #2 Phase: ZB-MR2
 Signal #1 Info : 30Mx0.32mmx 0.50µ Signal #2 Info : 30M x 0.32mm x 0.25µm

Compound	RT#1	RT#2	Resp#1	Resp#2	ng/ml	ng/ml

System Monitoring Compounds						
1) SA Tetrachlo...	5.314	4.295	145.1E6	67252793	20.307	20.154
2) SA Decachlor...	11.606	9.670	85688615	39839935	11.998	11.016
Target Compounds						
26) L6 AR-1254-1	7.546	6.440	36128413	12434815	159.393	73.220 #
27) L6 AR-1254-2	7.792	6.596	34052194	5072192	95.986	34.495 #
28) L6 AR-1254-3	8.187	7.020	30654095	9154527	80.426	37.538 #
29) L6 AR-1254-4	8.470	7.257	12180280	5166547	42.042	33.234
30) L6 AR-1254-5	8.904	7.687	38646868	18835211	123.093	91.149 #

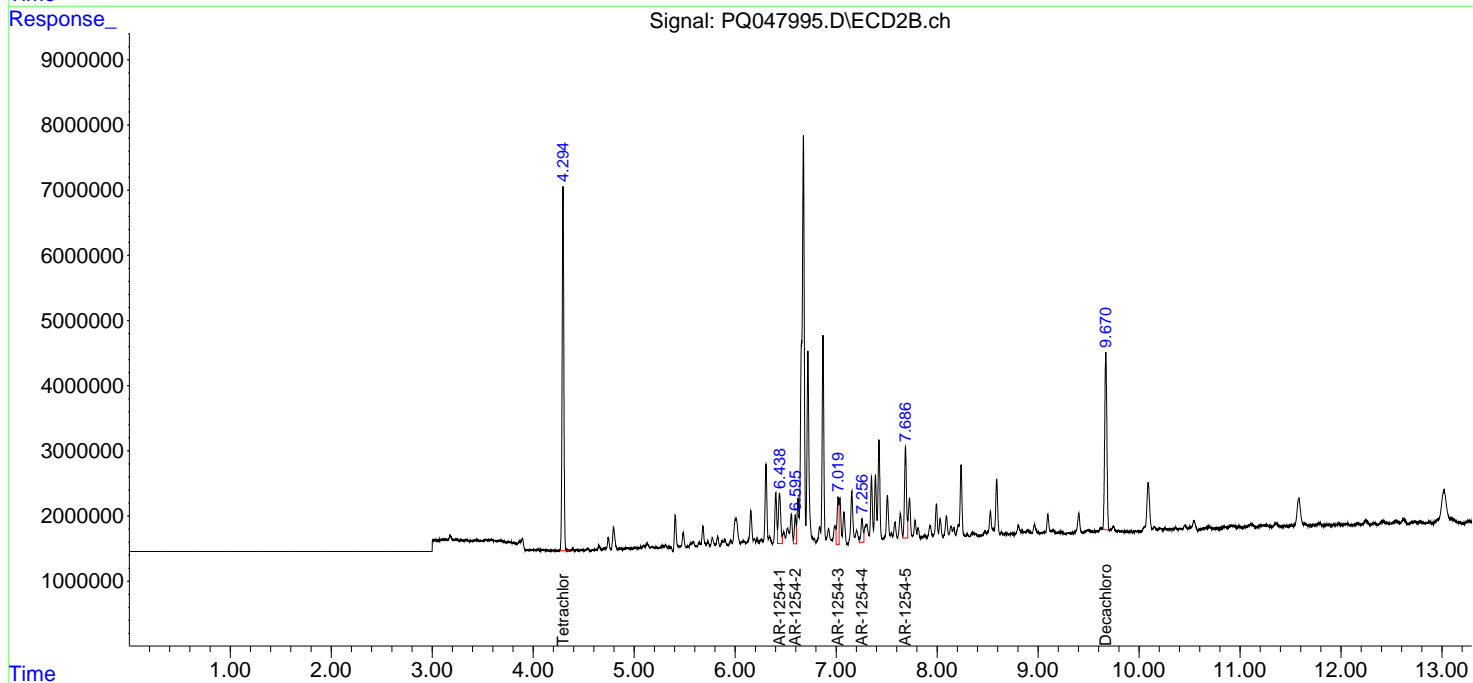
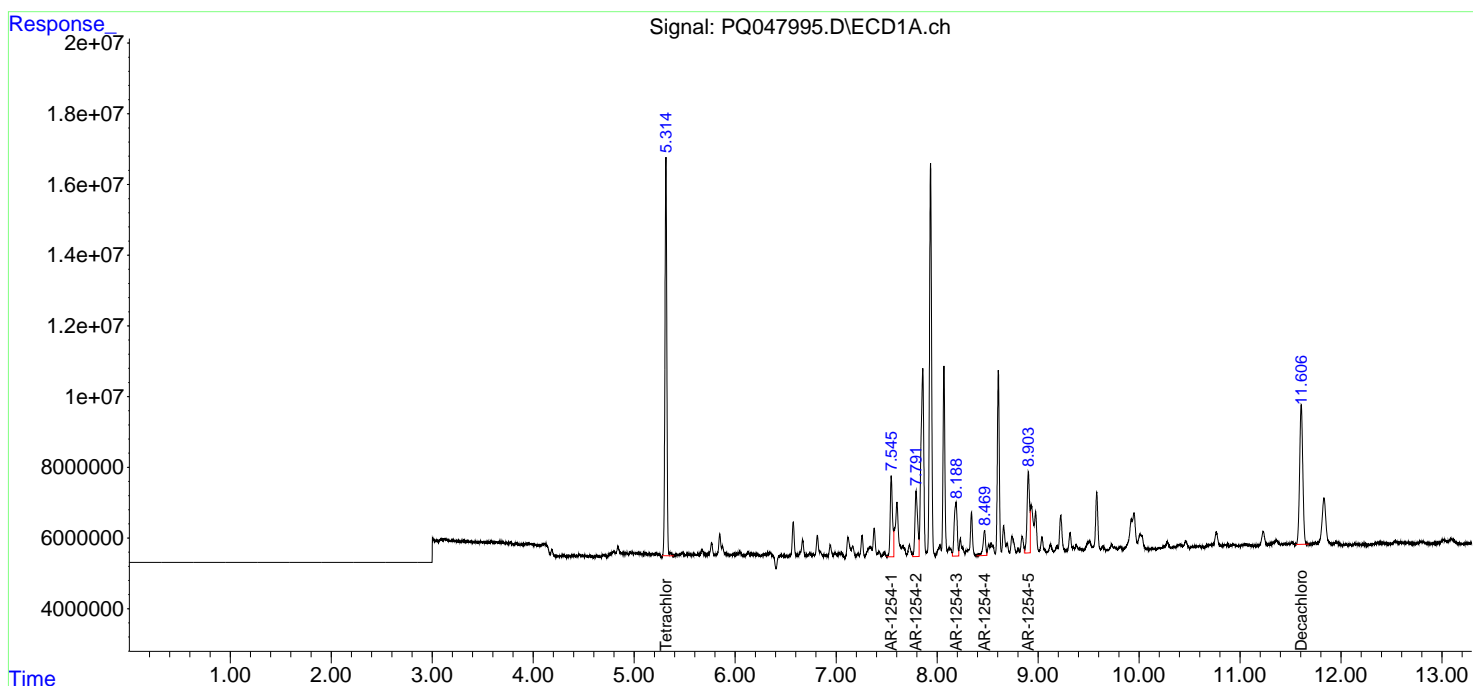
(f)=RT Delta > 1/2 Window (#)=Amounts differ by > 25% (m)=manual int.

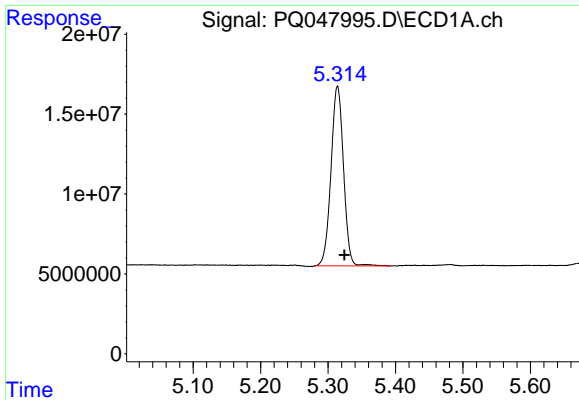
Data Path : Z:\pestpcbsrv\HPCHEM1\ECD_Q\Data\PQ060320\
 Data File : PQ047995.D
 Signal(s) : Signal #1: ECD1A.ch Signal #2: ECD2B.ch
 Acq On : 03 Jun 2020 09:22
 Operator : AJ\MA
 Sample : L2839-12
 Misc :
 ALS Vial : 34 Sample Multiplier: 1

Instrument :
 ECD_Q
 ClientSampled :
 NM6-COMP-2020-0-6

Integration File signal 1: autoint1.e
 Integration File signal 2: autoint2.e
 Quant Time: Jun 03 13:32:06 2020
 Quant Method : Z:\pestpcbsrv\HPCHEM1\ECD_Q\Method\PQ052720.M
 Quant Title : GC EXTRACTABLES
 QLast Update : Wed May 27 17:33:08 2020
 Response via : Initial Calibration
 Integrator: ChemStation

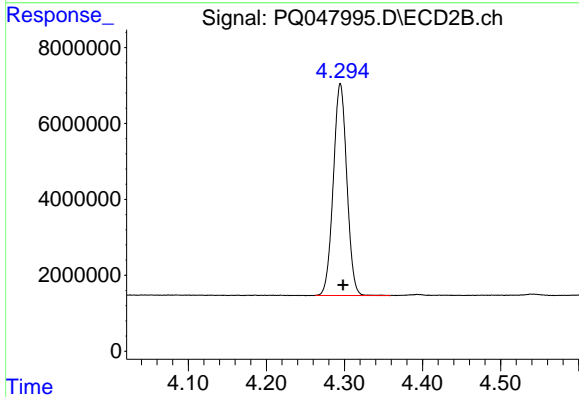
Volume Inj. : 2 µl
 Signal #1 Phase : ZB-MR1 Signal #2 Phase: ZB-MR2
 Signal #1 Info : 30Mx0.32mmx 0.50µ Signal #2 Info : 30M x 0.32mm x 0.25µm



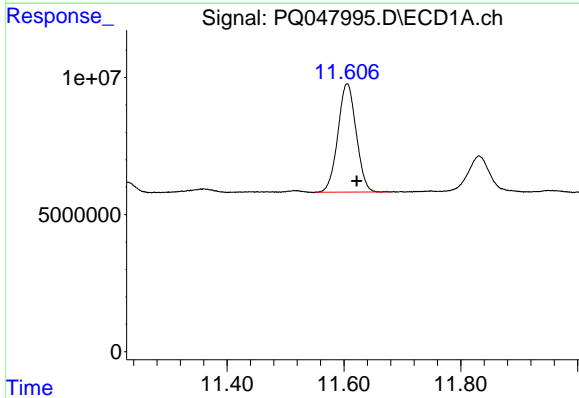


#1 Tetrachloro-m-xylene
 R.T.: 5.314 min
 Delta R.T.: -0.010 min
 Response: 145101386
 Conc: 20.31 ng/ml

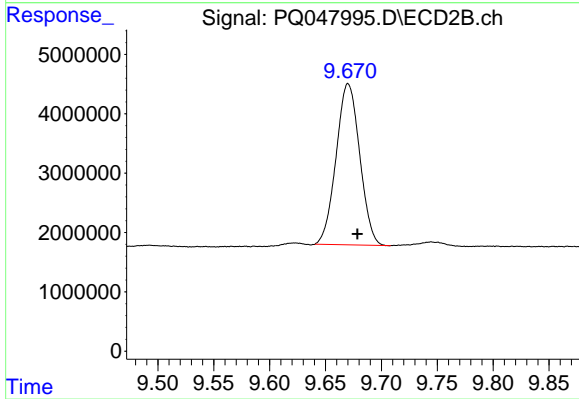
Instrument :
 ECD_Q
ClientSampled :
 NM6-COMP-2020-0-6



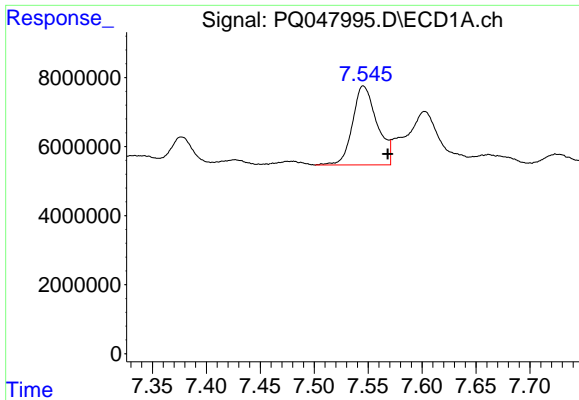
#1 Tetrachloro-m-xylene
 R.T.: 4.295 min
 Delta R.T.: -0.003 min
 Response: 67252793
 Conc: 20.15 ng/ml



#2 Decachlorobiphenyl
 R.T.: 11.606 min
 Delta R.T.: -0.017 min
 Response: 85688615
 Conc: 12.00 ng/ml



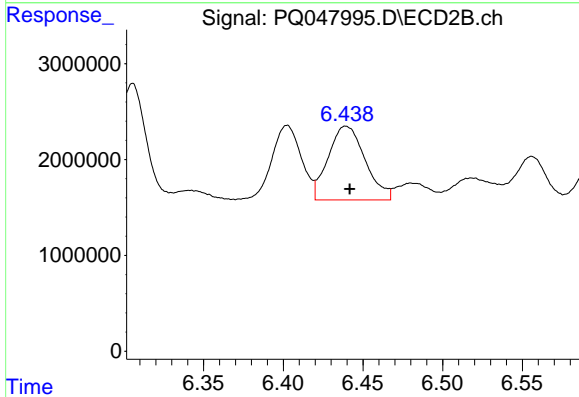
#2 Decachlorobiphenyl
 R.T.: 9.670 min
 Delta R.T.: -0.008 min
 Response: 39839935
 Conc: 11.02 ng/ml



#26 AR-1254-1

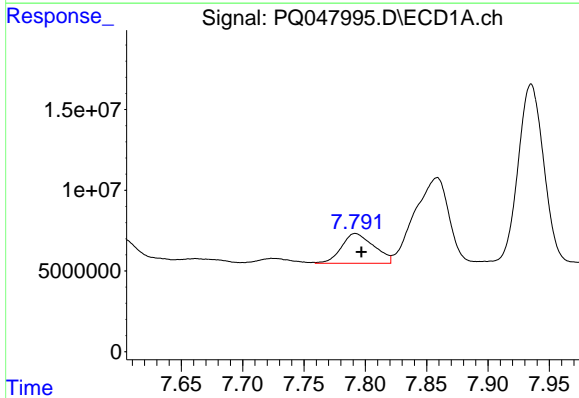
R.T.: 7.546 min
 Delta R.T.: -0.022 min
 Response: 36128413
 Conc: 159.39 ng/ml

Instrument :
 ECD_Q
 ClientSampleId :
 NM6-COMP-2020-0-6



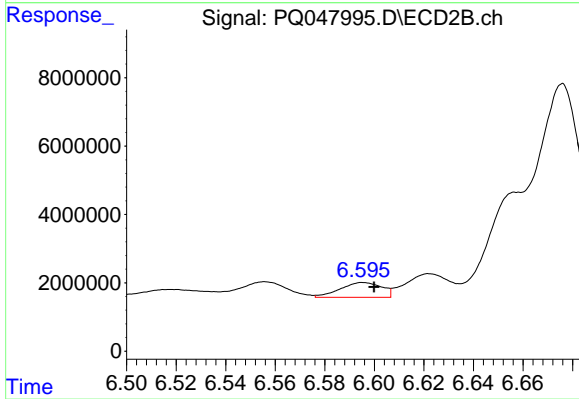
#26 AR-1254-1

R.T.: 6.440 min
 Delta R.T.: -0.002 min
 Response: 12434815
 Conc: 73.22 ng/ml



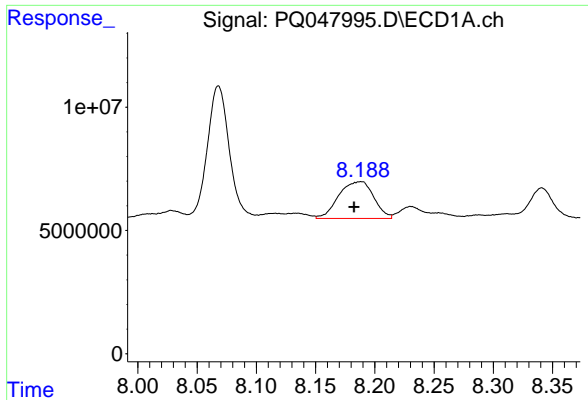
#27 AR-1254-2

R.T.: 7.792 min
 Delta R.T.: -0.005 min
 Response: 34052194
 Conc: 95.99 ng/ml



#27 AR-1254-2

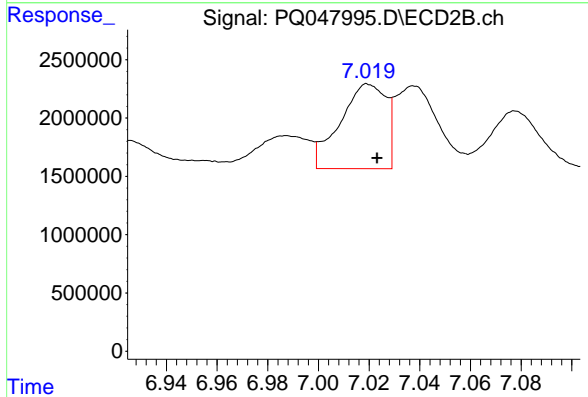
R.T.: 6.596 min
 Delta R.T.: -0.004 min
 Response: 5072192
 Conc: 34.49 ng/ml



#28 AR-1254-3

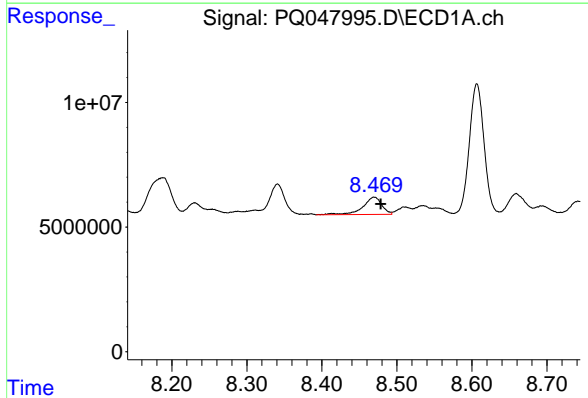
R.T.: 8.187 min
 Delta R.T.: 0.005 min
 Response: 30654095
 Conc: 80.43 ng/ml

Instrument :
 ECD_Q
ClientSampleId :
 NM6-COMP-2020-0-6



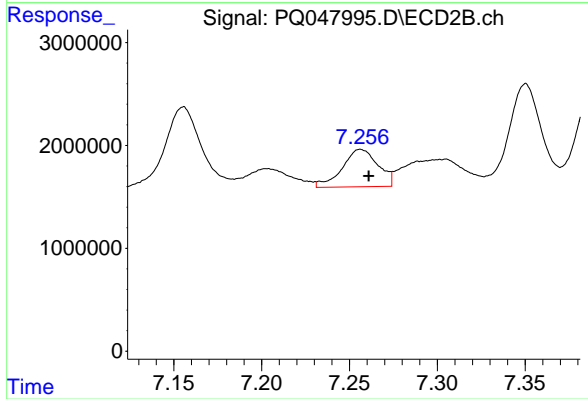
#28 AR-1254-3

R.T.: 7.020 min
 Delta R.T.: -0.003 min
 Response: 9154527
 Conc: 37.54 ng/ml



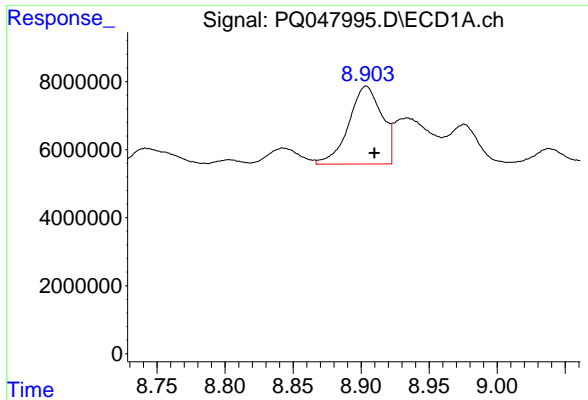
#29 AR-1254-4

R.T.: 8.470 min
 Delta R.T.: -0.009 min
 Response: 12180280
 Conc: 42.04 ng/ml



#29 AR-1254-4

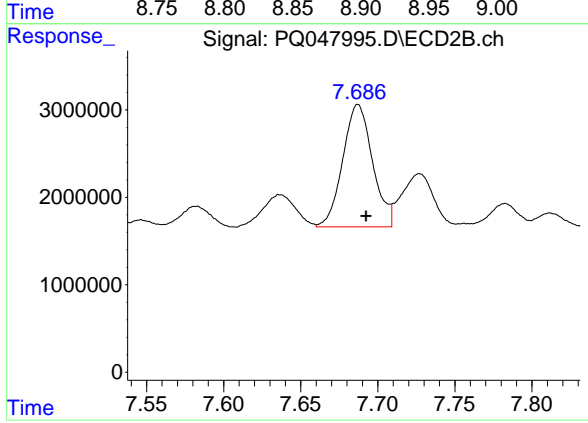
R.T.: 7.257 min
 Delta R.T.: -0.004 min
 Response: 5166547
 Conc: 33.23 ng/ml



#30 AR-1254-5

R.T.: 8.904 min
Delta R.T.: -0.006 min
Response: 38646868
Conc: 123.09 ng/ml

Instrument :
ECD_Q
ClientSampleId :
NM6-COMP-2020-0-6



#30 AR-1254-5

R.T.: 7.687 min
Delta R.T.: -0.005 min
Response: 18835211
Conc: 91.15 ng/ml