

Data Path : Z:\pestpcbsrv\HPCHEM1\ECD_Q\Data\PQ060620\
 Data File : PQ048120.D
 Signal(s) : Signal #1: ECD1A.ch Signal #2: ECD2B.ch
 Acq On : 06 Jun 2020 09:27
 Operator : AJ\MA
 Sample : AR1242CCC400
 Misc :
 ALS Vial : 4 Sample Multiplier: 1

Instrument :
 ECD_Q
 ClientSampleId :
 AR1242337

Integration File signal 1: autoint1.e
 Integration File signal 2: autoint2.e
 Quant Time: Jun 08 04:57:33 2020
 Quant Method : Z:\pestpcbsrv\HPCHEM1\ECD_Q\Method\PQ051820CLP.M
 Quant Title : GC EXTRACTABLES
 QLast Update : Tue May 19 03:16:23 2020
 Response via : Initial Calibration
 Integrator: ChemStation

Volume Inj. : 1 µl
 Signal #1 Phase : ZB MR1 Signal #2 Phase: ZB MR2
 Signal #1 Info : 30Mx0.32mmx 0.5µm Signal #2 Info : 30M x 0.32mm x 0.25µm

Compound	RT#1	RT#2	Resp#1	Resp#2	ng/ml	ng/ml

System Monitoring Compounds						
1) SA Tetrachlo...	5.309	4.294	165.4E6	77449909	21.168	24.571
2) SA Decachlor...	11.597	9.669	223.0E6	149.2E6	32.028	46.429 #
Target Compounds						
3) L1 AR-1016-1	6.639	5.560	90872391	44922787	335.553	373.600
4) L1 AR-1016-2	6.664	5.581	127.0E6	61651383	335.737	376.107
5) L1 AR-1016-3	6.731	5.774	79811359	31684680	340.188	363.409
6) L1 AR-1016-4	6.840	5.824	65253349	25252112	334.607	344.853
7) L1 AR-1016-5	7.154	6.055	62787549	34625590	327.931	375.954
8) L2 AR-1221-1	5.554	4.551	9605310	4355643	84.701	89.677
9) L2 AR-1221-2	5.660	4.653	11940400	5799637	146.646	162.465
10) L2 AR-1221-3	5.748	4.743	49535765	23935695	182.053	203.935
11) L3 AR-1232-1	5.748	4.743	49535765	23935695	249.373	279.089
12) L3 AR-1232-2	6.343	5.560	63739646	44922787	559.652	716.733 #
13) L3 AR-1232-3	6.664	5.774	127.0E6	31684680	650.394	685.856
14) L3 AR-1232-4	6.840	5.869	65253349	31935634	663.808	758.303
15) L3 AR-1232-5	6.934	6.055	54408129	34625590	689.462	771.350
16) L4 AR-1242-1	6.664	5.560	127.0E6	44922787	580.964	457.942
17) L4 AR-1242-2	6.664	5.581	127.0E6	61651383	418.745	466.868
18) L4 AR-1242-3	6.731	5.774	79811359	31684680	421.931	446.279
19) L4 AR-1242-4	6.840	5.869	65253349	31935634	415.772	444.055
20) L4 AR-1242-5	7.625	6.434	68994928	42743995	399.610	452.683
21) L5 AR-1248-1	6.664	5.560	127.0E6	44922787	750.621	588.807
22) L5 AR-1248-2	6.934	5.824	54408129	25252112	242.416	251.367
23) L5 AR-1248-3	7.154	5.869	62787549	31935634	250.660	313.536 #
24) L5 AR-1248-4	7.585	6.055	65593625	34625590	230.132	294.890 #
25) L5 AR-1248-5	7.625	6.479	68994928	36284673	252.827	292.721
26) L6 AR-1254-1	7.585	6.434	65593625	42743995	228.927	219.167
27) L6 AR-1254-2	7.793	6.593	57917537	11882356	130.496	69.138 #
28) L6 AR-1254-3	8.169	7.016	22648896	15733045	47.228	55.227
29) L6 AR-1254-4	8.467	7.255	18841264	14981401	51.160	80.574 #
30) L6 AR-1254-5	8.924	7.686	890513	5804526	2.215	22.704 #
31) L7 AR-1260-1	8.336	7.166	2719704	7006080	8.029	39.874 #
32) L7 AR-1260-2	8.595	7.348	5300843	3539105	12.809	16.241 #
33) L7 AR-1260-3	8.964	7.504	899802	3774989	2.784	18.975 #
34) L7 AR-1260-4	9.215	7.991	3065612	861333	8.011	4.977 #
35) L7 AR-1260-5	0.000	8.271	0	479681	N.D.	1.124 #
36) L8 AR-1262-1	9.116	7.686	1882652	5804526	9.296	40.903 #
37) L8 AR-1262-2	0.000	8.271	0	479681	N.D.	0.930 #
38) L8 AR-1262-3	0.000	8.542	0	153821	N.D.	0.751 #
39) L8 AR-1262-4	0.000	8.586	0	512095	N.D.	1.346 #
40) L8 AR-1262-5	0.000	9.100	0	212388	N.D.	1.160 #
41) L9 AR-1268-1	0.000	8.542	0	153821	N.D.	0.264 #
42) L9 AR-1268-2	0.000	8.586	0	512095	N.D.	0.958 #

Data Path : Z:\pestpcbsrv\HPCHEM1\ECD_Q\Data\PQ060620\
 Data File : PQ048120.D
 Signal(s) : Signal #1: ECD1A.ch Signal #2: ECD2B.ch
 Acq On : 06 Jun 2020 09:27
 Operator : AJ\MA
 Sample : AR1242CCC400
 Misc :
 ALS Vial : 4 Sample Multiplier: 1

Instrument :
 ECD_Q
 ClientSampleId :
 AR1242337

Integration File signal 1: autoint1.e
 Integration File signal 2: autoint2.e
 Quant Time: Jun 08 04:57:33 2020
 Quant Method : Z:\pestpcbsrv\HPCHEM1\ECD_Q\Method\PQ051820CLP.M
 Quant Title : GC EXTRACTABLES
 QLast Update : Tue May 19 03:16:23 2020
 Response via : Initial Calibration
 Integrator: ChemStation

Volume Inj. : 1 µl
 Signal #1 Phase : ZB MR1 Signal #2 Phase: ZB MR2
 Signal #1 Info : 30Mx0.32mmx 0.5µm Signal #2 Info : 30M x 0.32mm x 0.25µm

	Compound	RT#1	RT#2	Resp#1	Resp#2	ng/ml	ng/ml
43)	L9 AR-1268-3	10.274	8.806	1065204	1653554	1.259	3.749 #
44)	L9 AR-1268-4	0.000	9.100	0	212388	N.D.	1.074 #
45)	L9 AR-1268-5	11.219	9.401	2592731	1200071	0.895	0.815

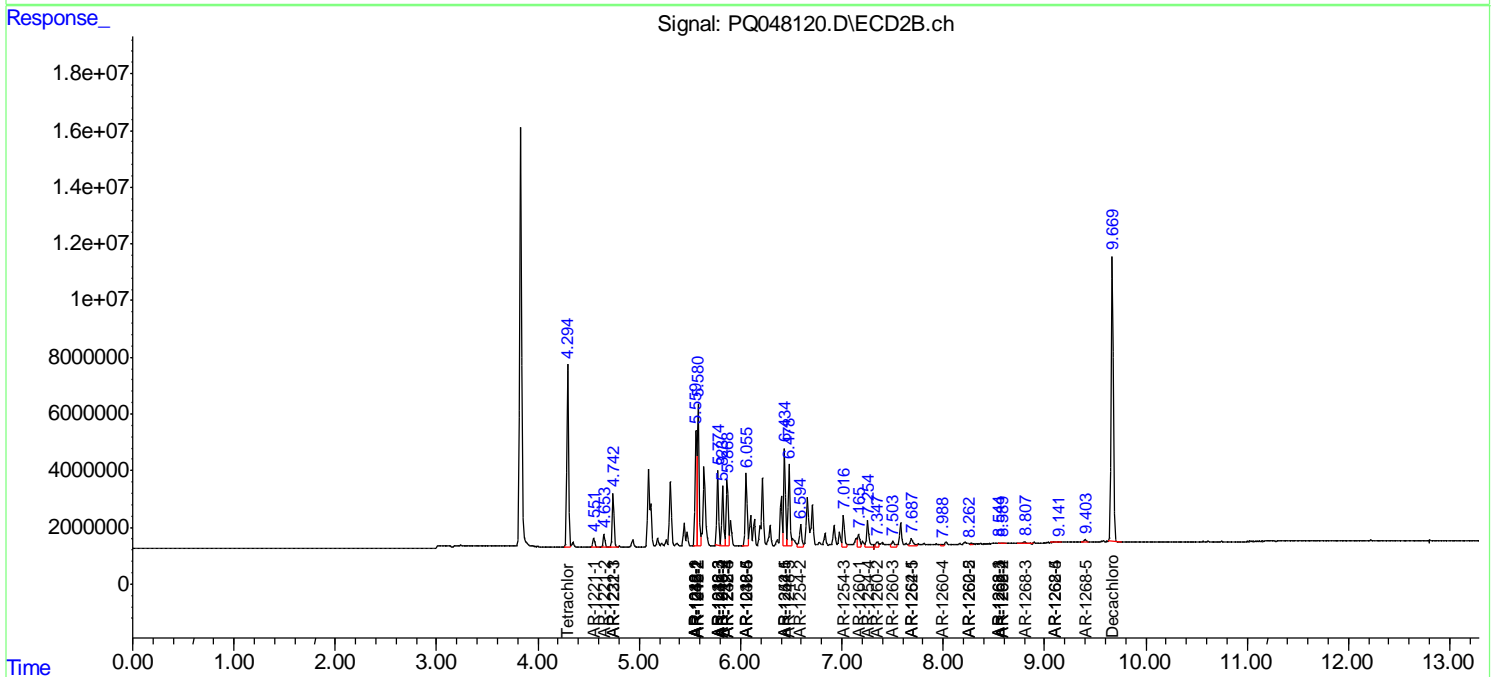
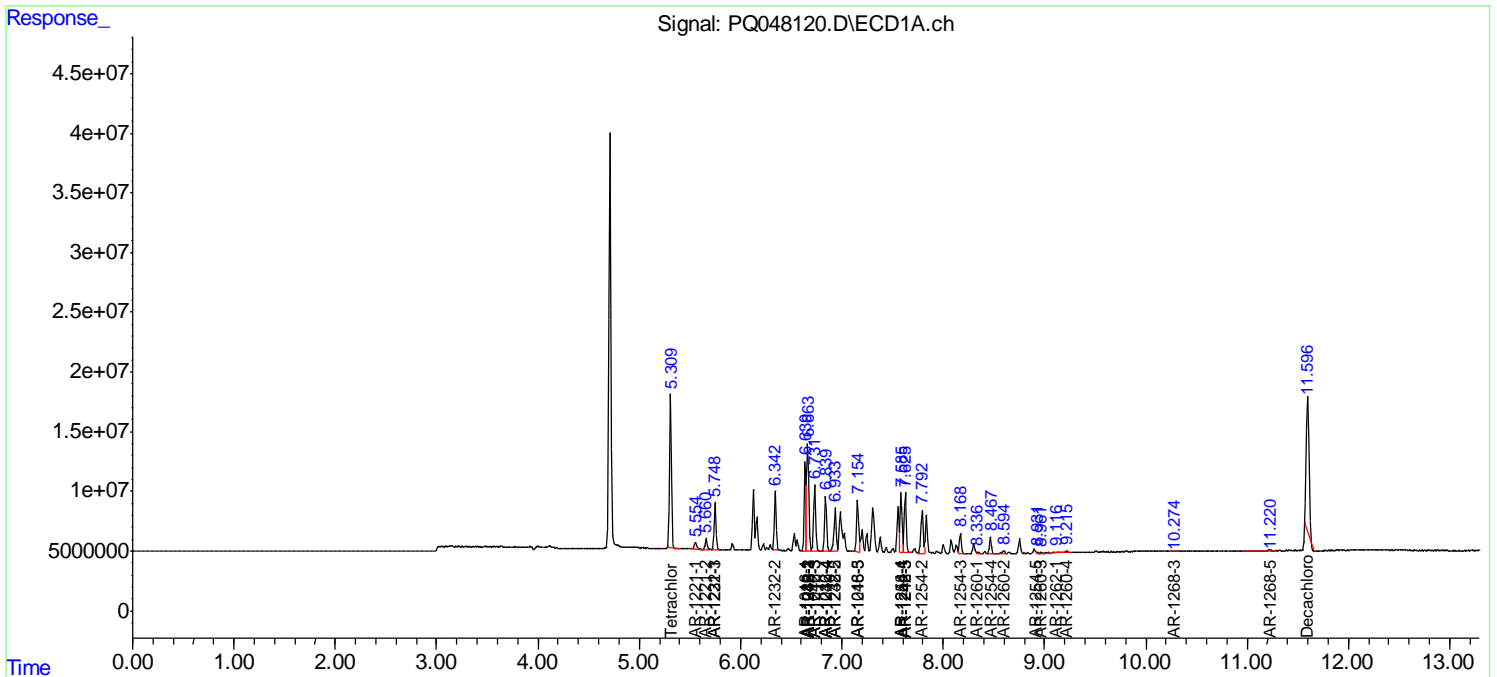
(f)=RT Delta > 1/2 Window (#)=Amounts differ by > 25% (m)=manual int.

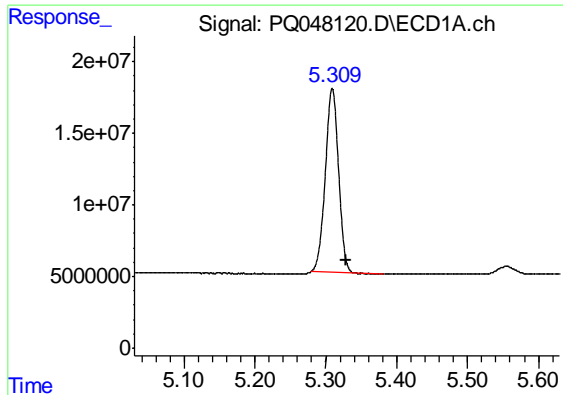
Data Path : Z:\pestpcbsrv\HPCHEM1\ECD_Q\Data\PQ060620\
 Data File : PQ048120.D
 Signal(s) : Signal #1: ECD1A.ch Signal #2: ECD2B.ch
 Acq On : 06 Jun 2020 09:27
 Operator : AJ\MA
 Sample : AR1242CCC400
 Misc :
 ALS Vial : 4 Sample Multiplier: 1

Instrument :
 ECD_Q
 Client Sampled :
 AR1242337

Integration File signal 1: autoint1.e
 Integration File signal 2: autoint2.e
 Quant Time: Jun 08 04:57:33 2020
 Quant Method : Z:\pestpcbsrv\HPCHEM1\ECD_Q\Method\PQ051820CLP.M
 Quant Title : GC EXTRACTABLES
 QLast Update : Tue May 19 03:16:23 2020
 Response via : Initial Calibration
 Integrator: ChemStation

Volume Inj. : 1 µl
 Signal #1 Phase : ZB MR1 Signal #2 Phase: ZB MR2
 Signal #1 Info : 30Mx0.32mmx 0.5µm Signal #2 Info : 30M x 0.32mm x 0.25µm

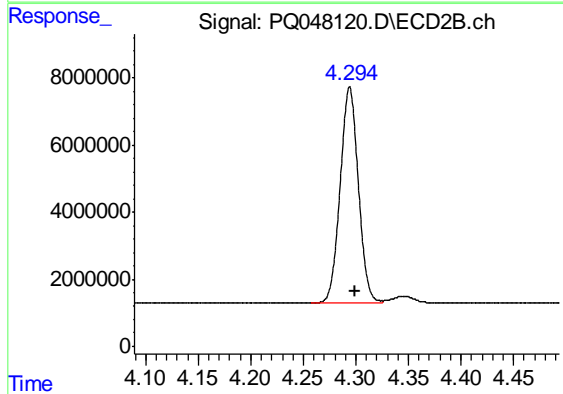




#1 Tetrachloro-m-xylene

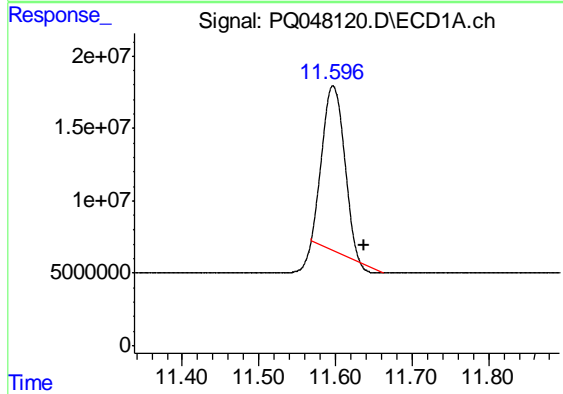
R.T.: 5.309 min
 Delta R.T.: -0.020 min
 Response: 165407739
 Conc: 21.17 ng/ml

Instrument :
 ECD_Q
 ClientSampleId :
 AR1242337



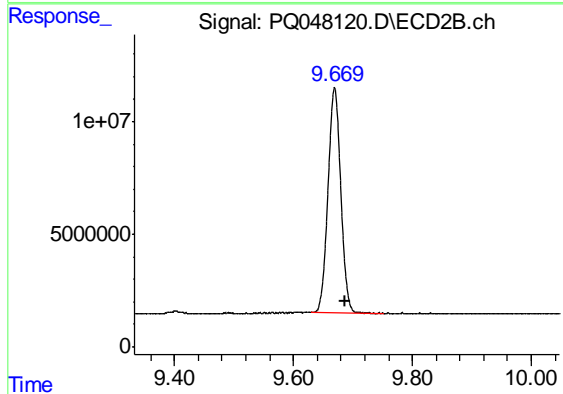
#1 Tetrachloro-m-xylene

R.T.: 4.294 min
 Delta R.T.: -0.005 min
 Response: 77449909
 Conc: 24.57 ng/ml



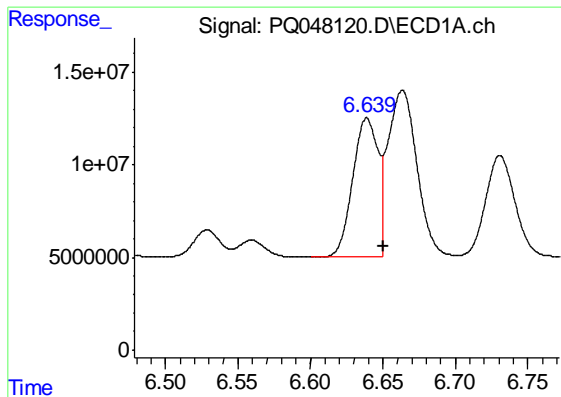
#2 Decachlorobiphenyl

R.T.: 11.597 min
 Delta R.T.: -0.040 min
 Response: 222970388
 Conc: 32.03 ng/ml



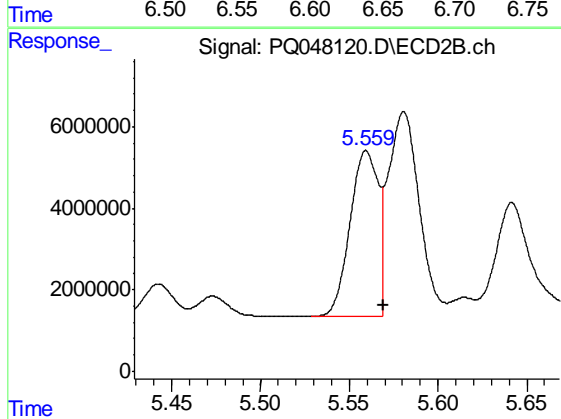
#2 Decachlorobiphenyl

R.T.: 9.669 min
 Delta R.T.: -0.018 min
 Response: 149196186
 Conc: 46.43 ng/ml

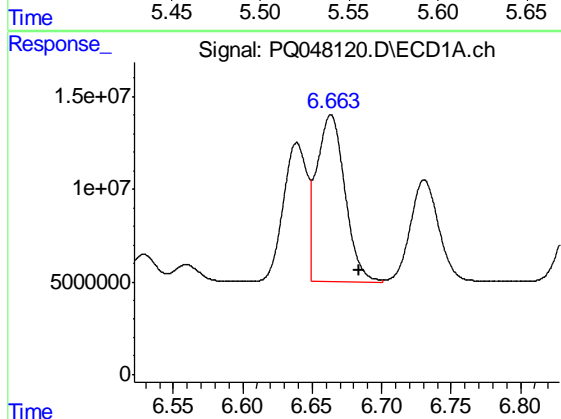


#3 AR-1016-1
 R.T.: 6.639 min
 Delta R.T.: -0.011 min
 Response: 90872391
 Conc: 335.55 ng/ml

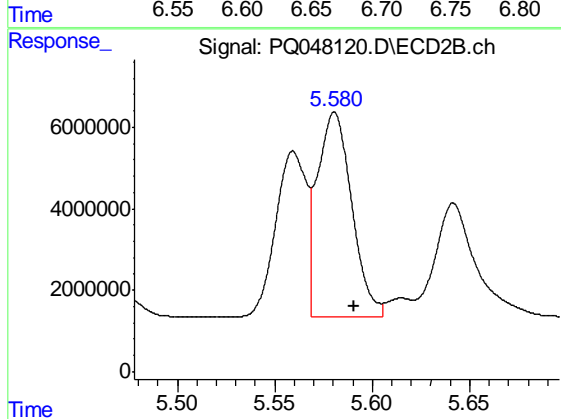
Instrument :
 ECD_Q
 ClientSampleId :
 AR1242337



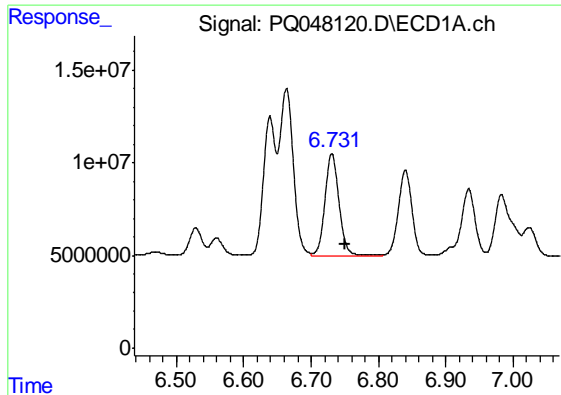
#3 AR-1016-1
 R.T.: 5.560 min
 Delta R.T.: -0.009 min
 Response: 44922787
 Conc: 373.60 ng/ml



#4 AR-1016-2
 R.T.: 6.664 min
 Delta R.T.: -0.020 min
 Response: 126982426
 Conc: 335.74 ng/ml



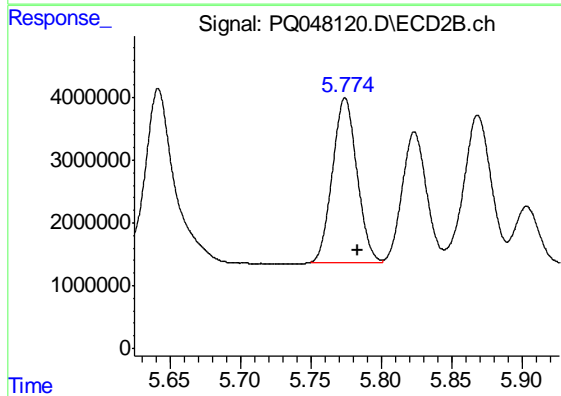
#4 AR-1016-2
 R.T.: 5.581 min
 Delta R.T.: -0.010 min
 Response: 61651383
 Conc: 376.11 ng/ml



#5 AR-1016-3

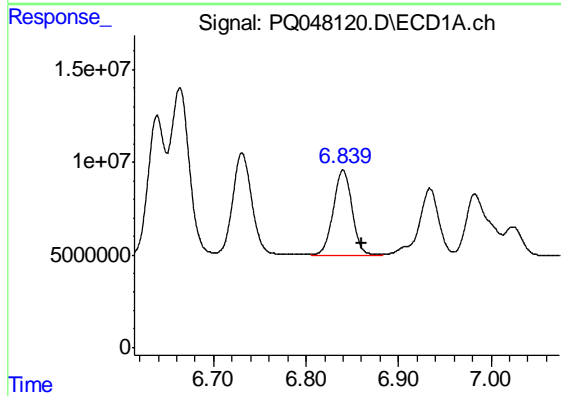
R.T.: 6.731 min
 Delta R.T.: -0.020 min
 Response: 79811359
 Conc: 340.19 ng/ml

Instrument :
 ECD_Q
 ClientSampleId :
 AR1242337



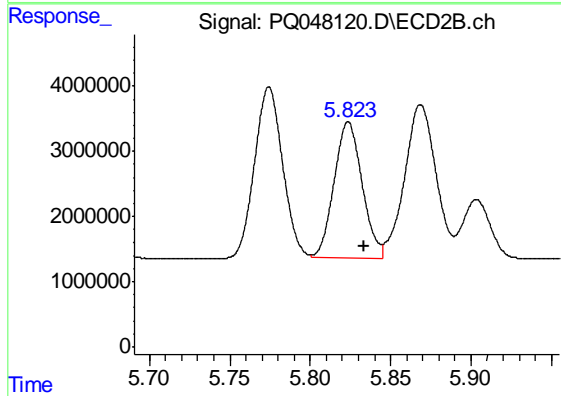
#5 AR-1016-3

R.T.: 5.774 min
 Delta R.T.: -0.009 min
 Response: 31684680
 Conc: 363.41 ng/ml



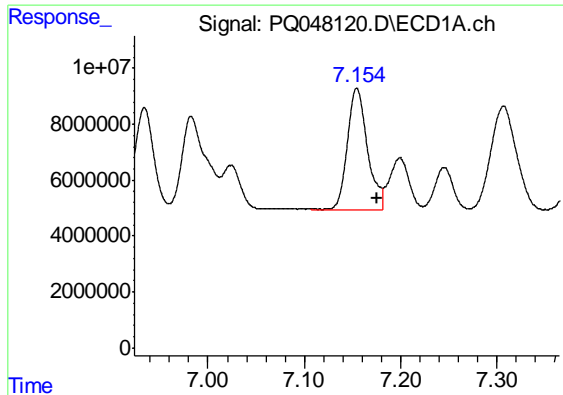
#6 AR-1016-4

R.T.: 6.840 min
 Delta R.T.: -0.020 min
 Response: 65253349
 Conc: 334.61 ng/ml



#6 AR-1016-4

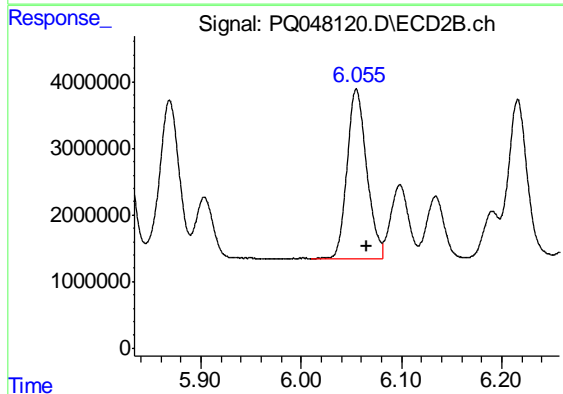
R.T.: 5.824 min
 Delta R.T.: -0.010 min
 Response: 25252112
 Conc: 344.85 ng/ml



#7 AR-1016-5

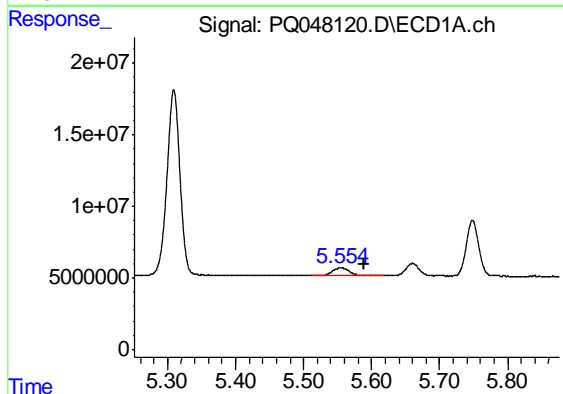
R.T.: 7.154 min
 Delta R.T.: -0.021 min
 Response: 62787549
 Conc: 327.93 ng/ml

Instrument :
 ECD_Q
 ClientSampleId :
 AR1242337



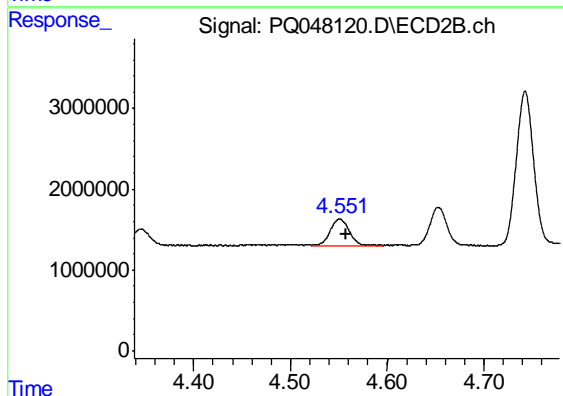
#7 AR-1016-5

R.T.: 6.055 min
 Delta R.T.: -0.010 min
 Response: 34625590
 Conc: 375.95 ng/ml



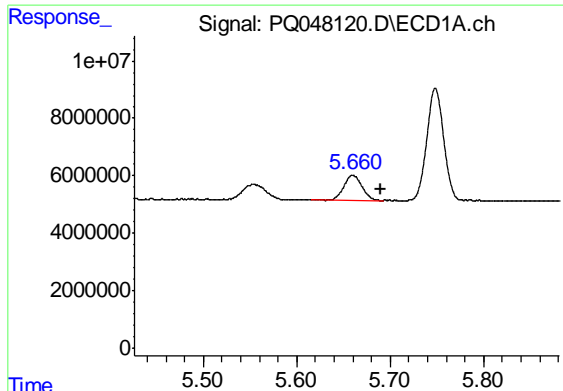
#8 AR-1221-1

R.T.: 5.554 min
 Delta R.T.: -0.036 min
 Response: 9605310
 Conc: 84.70 ng/ml



#8 AR-1221-1

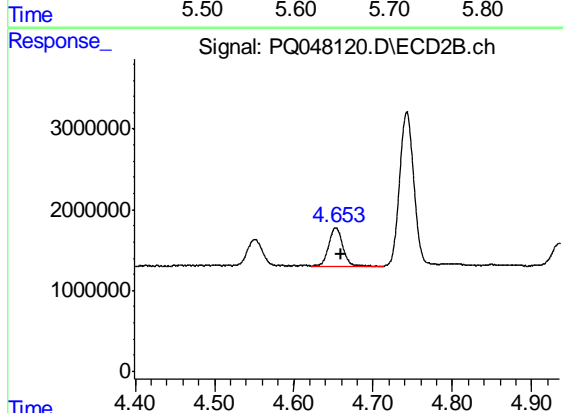
R.T.: 4.551 min
 Delta R.T.: -0.007 min
 Response: 4355643
 Conc: 89.68 ng/ml



#9 AR-1221-2

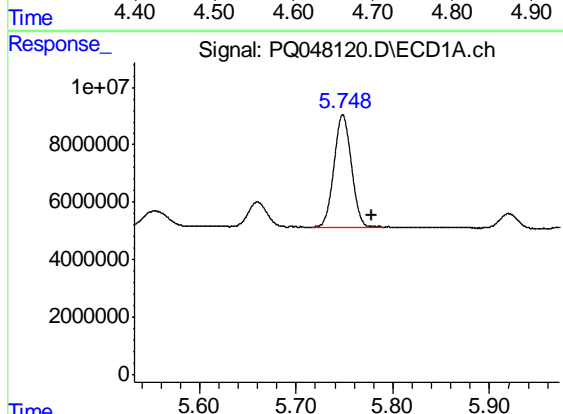
R.T.: 5.660 min
 Delta R.T.: -0.030 min
 Response: 11940400
 Conc: 146.65 ng/ml

Instrument :
 ECD_Q
 ClientSampleId :
 AR1242337



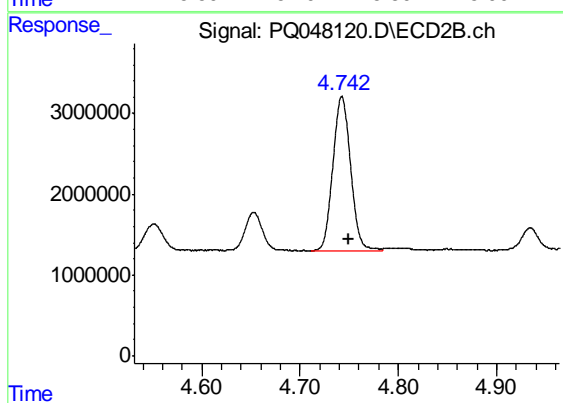
#9 AR-1221-2

R.T.: 4.653 min
 Delta R.T.: -0.006 min
 Response: 5799637
 Conc: 162.46 ng/ml



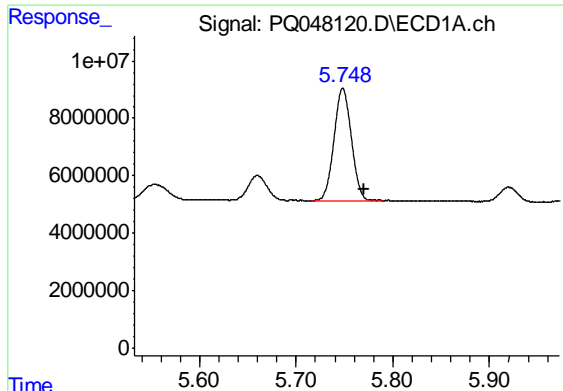
#10 AR-1221-3

R.T.: 5.748 min
 Delta R.T.: -0.031 min
 Response: 49535765
 Conc: 182.05 ng/ml



#10 AR-1221-3

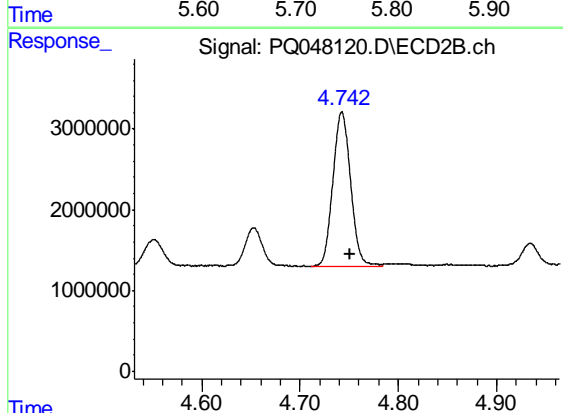
R.T.: 4.743 min
 Delta R.T.: -0.007 min
 Response: 23935695
 Conc: 203.93 ng/ml



#11 AR-1232-1

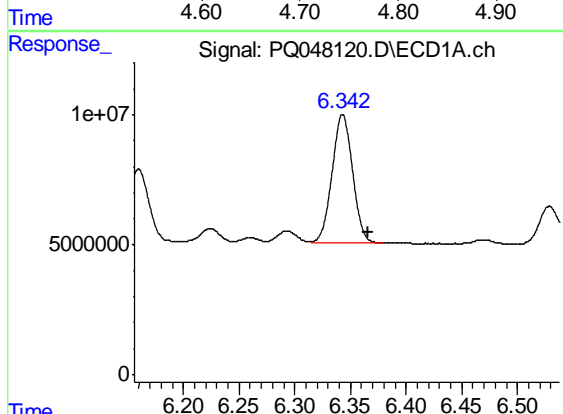
R.T.: 5.748 min
 Delta R.T.: -0.022 min
 Response: 49535765
 Conc: 249.37 ng/ml

Instrument :
 ECD_Q
 ClientSampleId :
 AR1242337



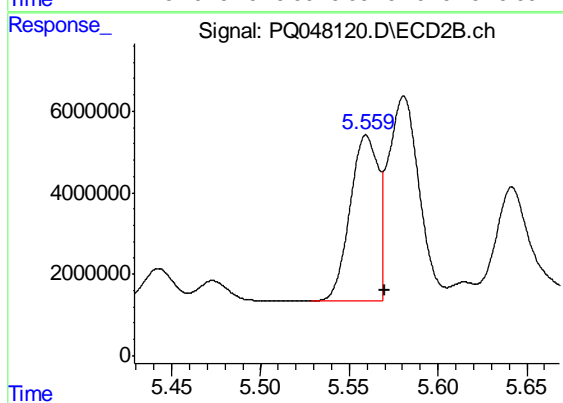
#11 AR-1232-1

R.T.: 4.743 min
 Delta R.T.: -0.009 min
 Response: 23935695
 Conc: 279.09 ng/ml



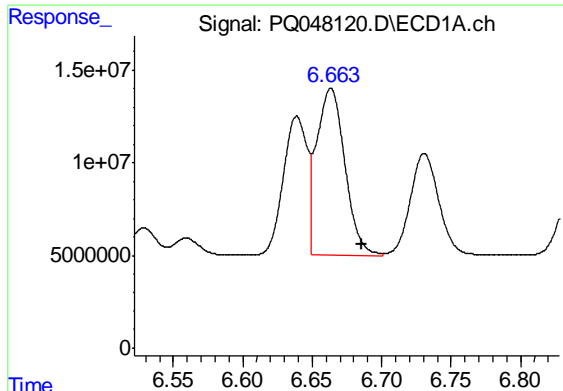
#12 AR-1232-2

R.T.: 6.343 min
 Delta R.T.: -0.023 min
 Response: 63739646
 Conc: 559.65 ng/ml



#12 AR-1232-2

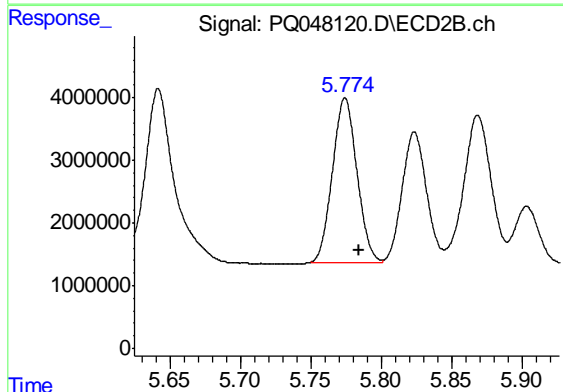
R.T.: 5.560 min
 Delta R.T.: -0.010 min
 Response: 44922787
 Conc: 716.73 ng/ml



#13 AR-1232-3

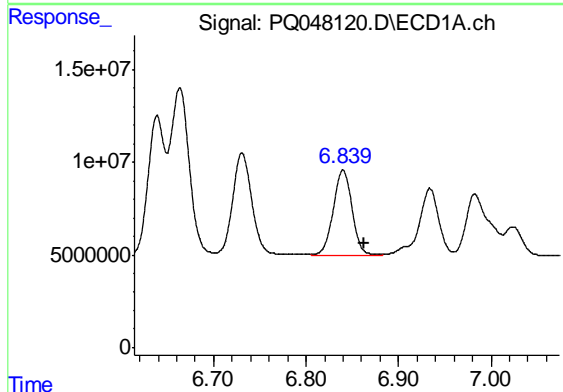
R.T.: 6.664 min
 Delta R.T.: -0.023 min
 Response: 126982426
 Conc: 650.39 ng/ml

Instrument :
 ECD_Q
 ClientSampleId :
 AR1242337



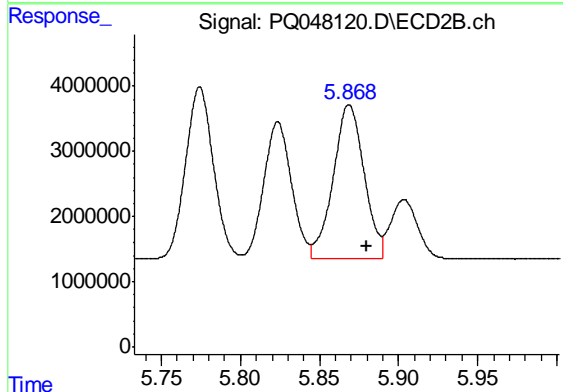
#13 AR-1232-3

R.T.: 5.774 min
 Delta R.T.: -0.010 min
 Response: 31684680
 Conc: 685.86 ng/ml



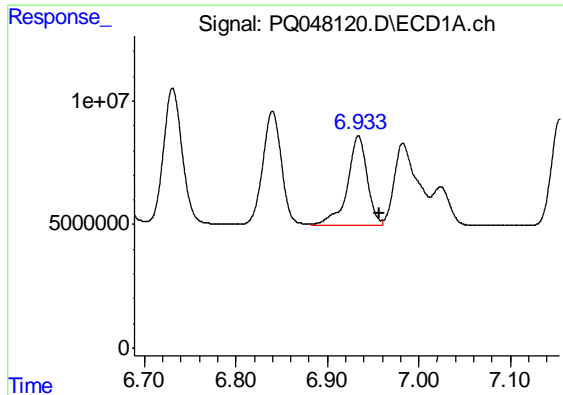
#14 AR-1232-4

R.T.: 6.840 min
 Delta R.T.: -0.022 min
 Response: 65253349
 Conc: 663.81 ng/ml



#14 AR-1232-4

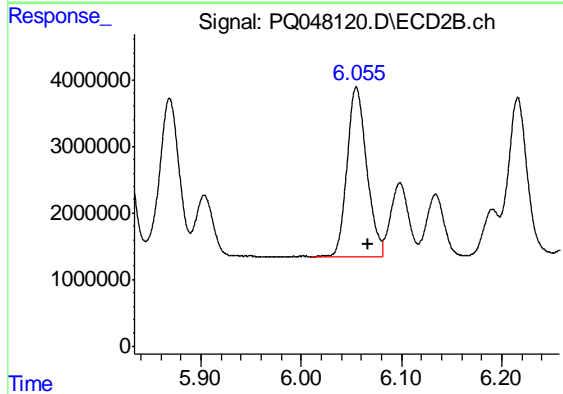
R.T.: 5.869 min
 Delta R.T.: -0.011 min
 Response: 31935634
 Conc: 758.30 ng/ml



#15 AR-1232-5

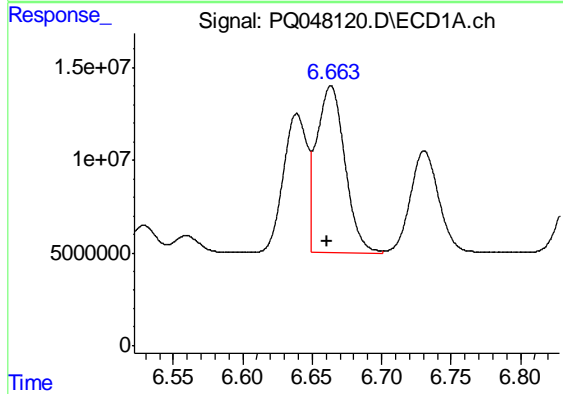
R.T.: 6.934 min
 Delta R.T.: -0.023 min
 Response: 54408129
 Conc: 689.46 ng/ml

Instrument :
 ECD_Q
 ClientSampled :
 AR1242337



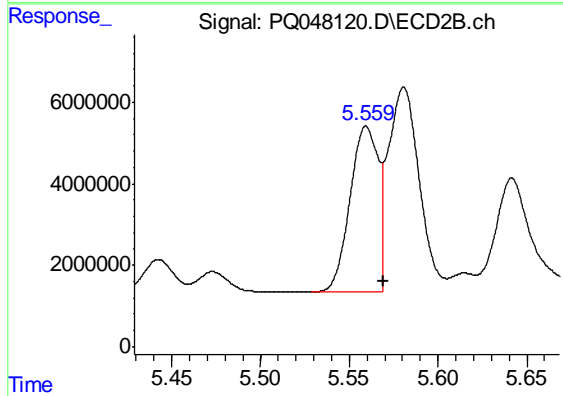
#15 AR-1232-5

R.T.: 6.055 min
 Delta R.T.: -0.011 min
 Response: 34625590
 Conc: 771.35 ng/ml



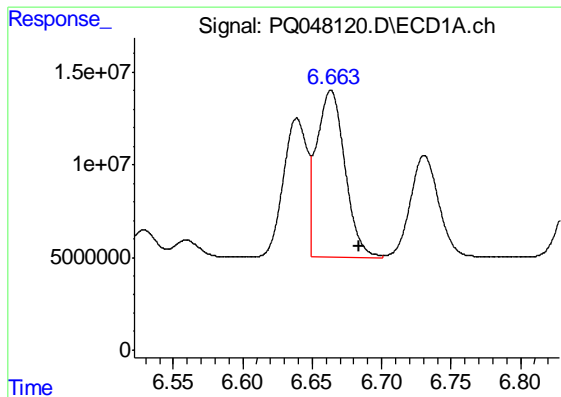
#16 AR-1242-1

R.T.: 6.664 min
 Delta R.T.: 0.003 min
 Response: 126982426
 Conc: 580.96 ng/ml



#16 AR-1242-1

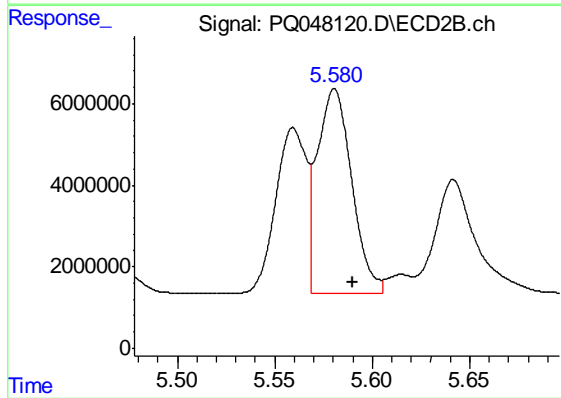
R.T.: 5.560 min
 Delta R.T.: -0.009 min
 Response: 44922787
 Conc: 457.94 ng/ml



#17 AR-1242-2

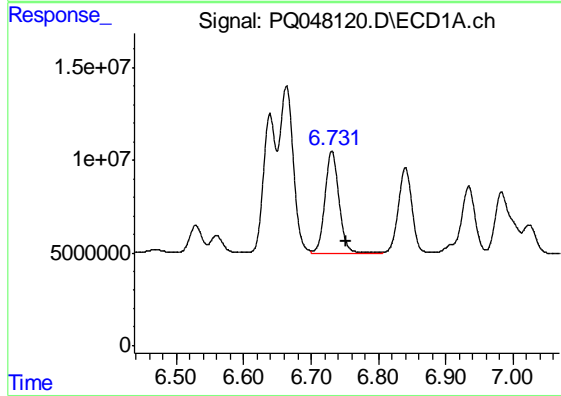
R.T.: 6.664 min
 Delta R.T.: -0.021 min
 Response: 126982426
 Conc: 418.75 ng/ml

Instrument :
 ECD_Q
 ClientSampleId :
 AR1242337



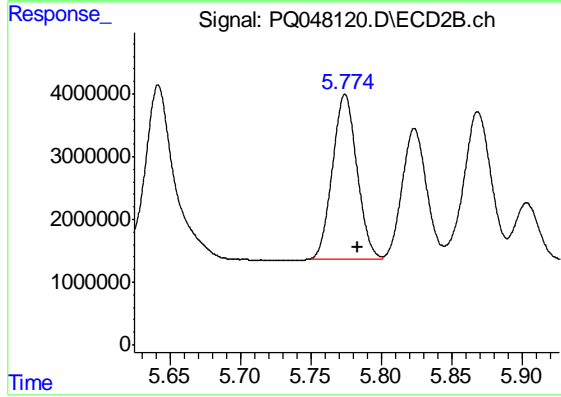
#17 AR-1242-2

R.T.: 5.581 min
 Delta R.T.: -0.009 min
 Response: 61651383
 Conc: 466.87 ng/ml



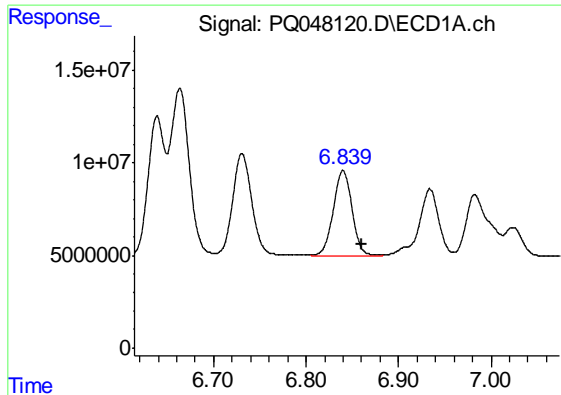
#18 AR-1242-3

R.T.: 6.731 min
 Delta R.T.: -0.022 min
 Response: 79811359
 Conc: 421.93 ng/ml



#18 AR-1242-3

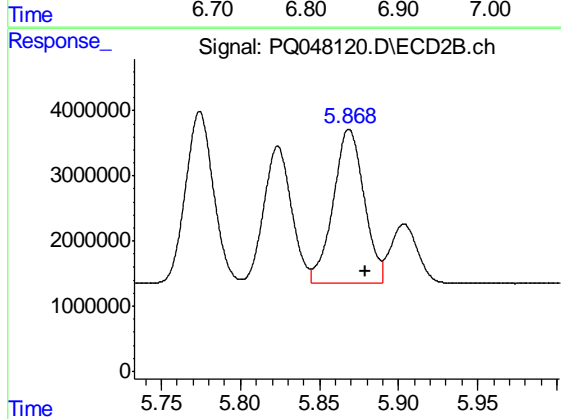
R.T.: 5.774 min
 Delta R.T.: -0.009 min
 Response: 31684680
 Conc: 446.28 ng/ml



#19 AR-1242-4

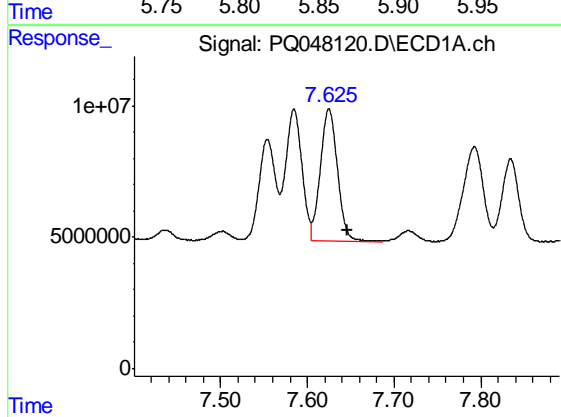
R.T.: 6.840 min
 Delta R.T.: -0.021 min
 Response: 65253349
 Conc: 415.77 ng/ml

Instrument :
 ECD_Q
 ClientSampleId :
 AR1242337



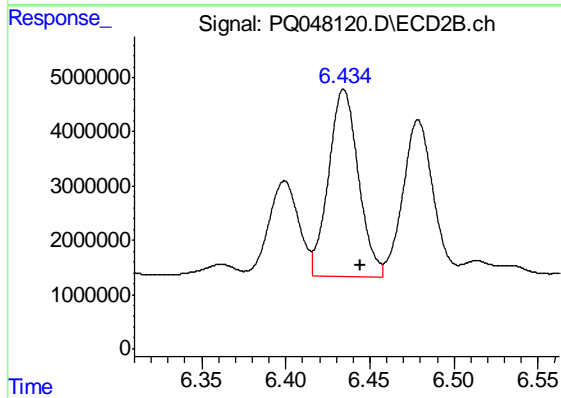
#19 AR-1242-4

R.T.: 5.869 min
 Delta R.T.: -0.010 min
 Response: 31935634
 Conc: 444.06 ng/ml



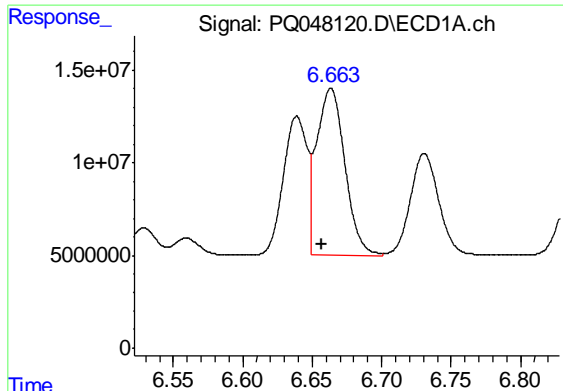
#20 AR-1242-5

R.T.: 7.625 min
 Delta R.T.: -0.022 min
 Response: 68994928
 Conc: 399.61 ng/ml



#20 AR-1242-5

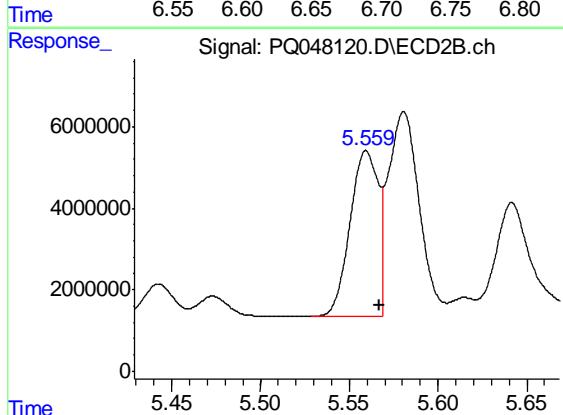
R.T.: 6.434 min
 Delta R.T.: -0.010 min
 Response: 42743995
 Conc: 452.68 ng/ml



#21 AR-1248-1

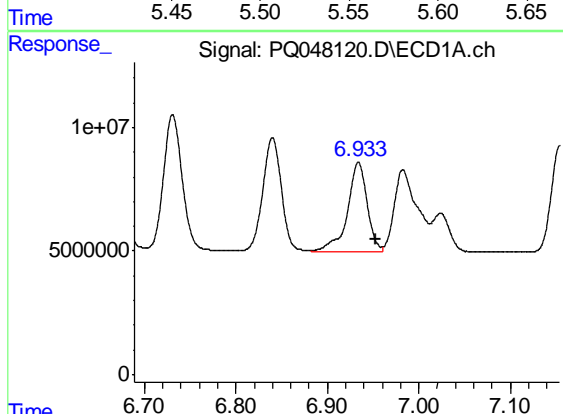
R.T.: 6.664 min
 Delta R.T.: 0.007 min
 Response: 126982426
 Conc: 750.62 ng/ml

Instrument :
 ECD_Q
 ClientSampleId :
 AR1242337



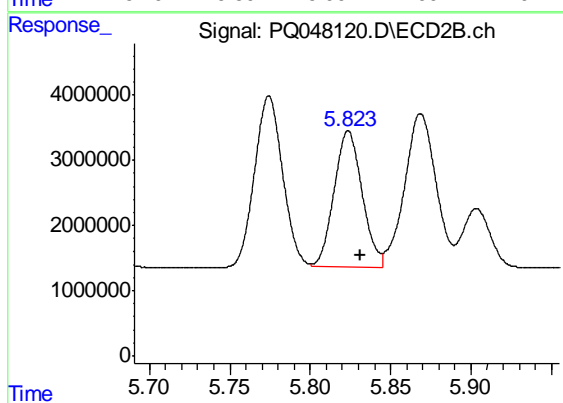
#21 AR-1248-1

R.T.: 5.560 min
 Delta R.T.: -0.007 min
 Response: 44922787
 Conc: 588.81 ng/ml



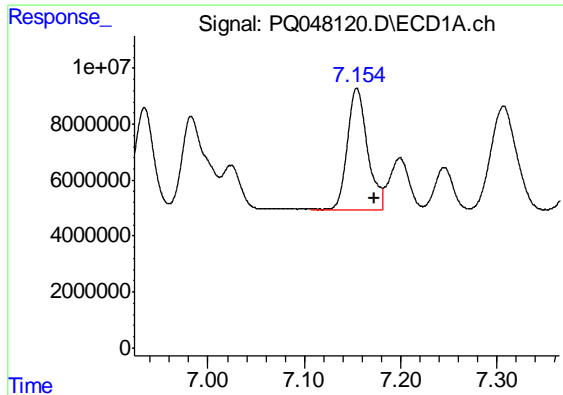
#22 AR-1248-2

R.T.: 6.934 min
 Delta R.T.: -0.018 min
 Response: 54408129
 Conc: 242.42 ng/ml



#22 AR-1248-2

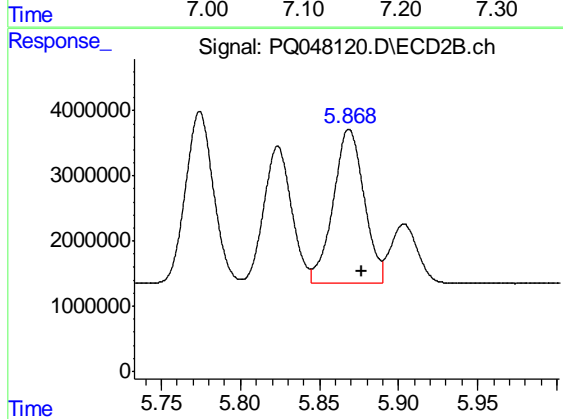
R.T.: 5.824 min
 Delta R.T.: -0.008 min
 Response: 25252112
 Conc: 251.37 ng/ml



#23 AR-1248-3

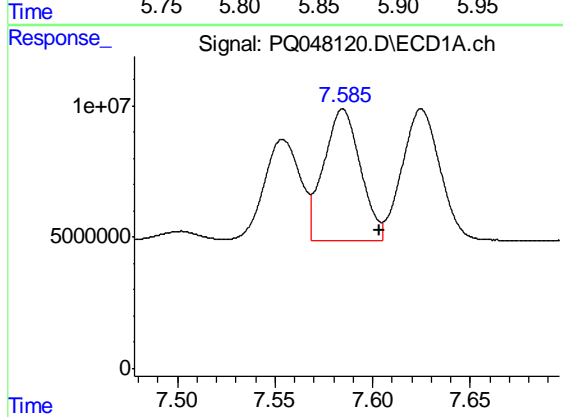
R.T.: 7.154 min
 Delta R.T.: -0.019 min
 Response: 62787549
 Conc: 250.66 ng/ml

Instrument :
 ECD_Q
 ClientSampleId :
 AR1242337



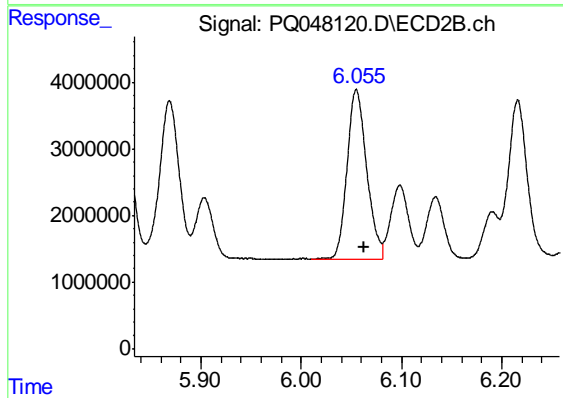
#23 AR-1248-3

R.T.: 5.869 min
 Delta R.T.: -0.008 min
 Response: 31935634
 Conc: 313.54 ng/ml



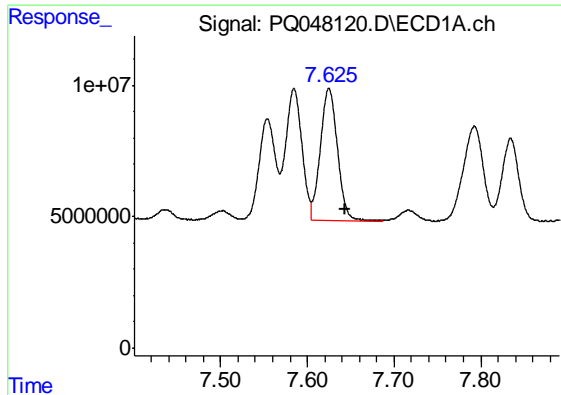
#24 AR-1248-4

R.T.: 7.585 min
 Delta R.T.: -0.019 min
 Response: 65593625
 Conc: 230.13 ng/ml



#24 AR-1248-4

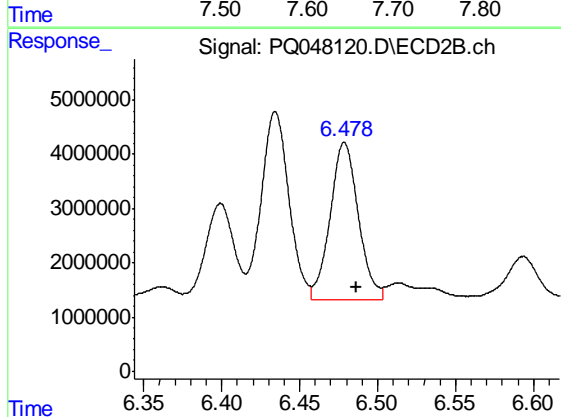
R.T.: 6.055 min
 Delta R.T.: -0.008 min
 Response: 34625590
 Conc: 294.89 ng/ml



#25 AR-1248-5

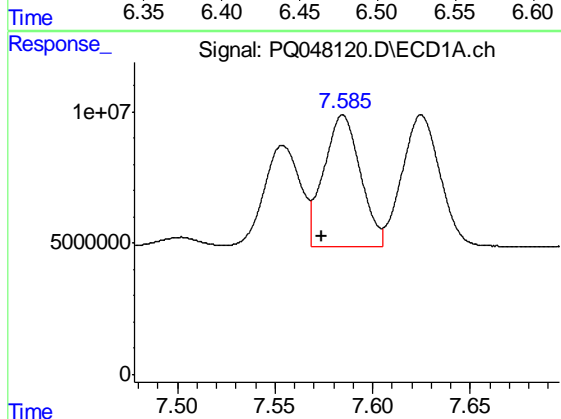
R.T.: 7.625 min
 Delta R.T.: -0.019 min
 Response: 68994928
 Conc: 252.83 ng/ml

Instrument :
 ECD_Q
 ClientSampleId :
 AR1242337



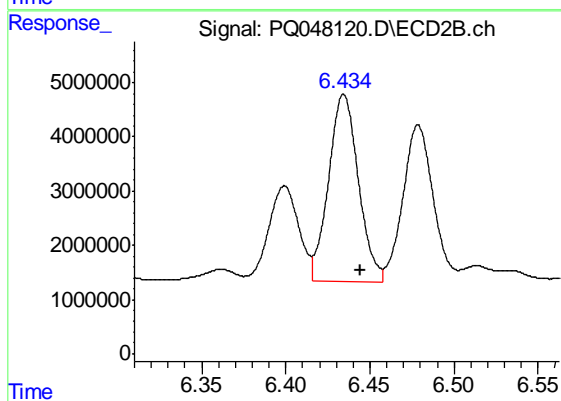
#25 AR-1248-5

R.T.: 6.479 min
 Delta R.T.: -0.008 min
 Response: 36284673
 Conc: 292.72 ng/ml



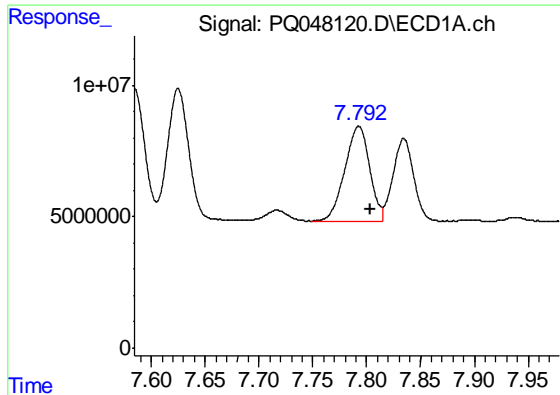
#26 AR-1254-1

R.T.: 7.585 min
 Delta R.T.: 0.010 min
 Response: 65593625
 Conc: 228.93 ng/ml



#26 AR-1254-1

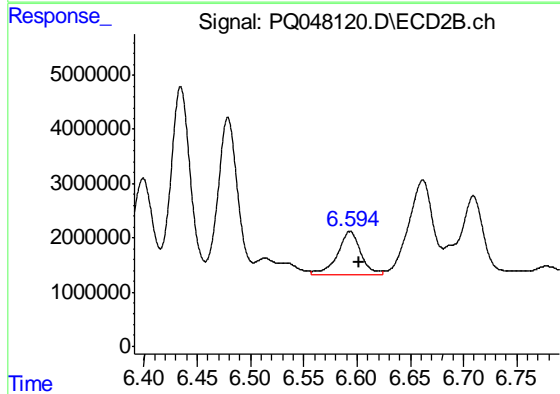
R.T.: 6.434 min
 Delta R.T.: -0.010 min
 Response: 42743995
 Conc: 219.17 ng/ml



#27 AR-1254-2

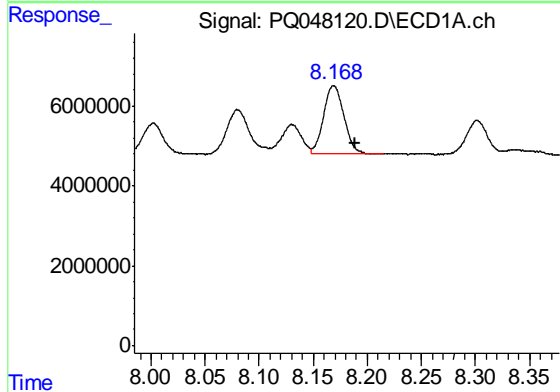
R.T.: 7.793 min
Delta R.T.: -0.011 min
Response: 57917537
Conc: 130.50 ng/ml

Instrument :
ECD_Q
ClientSampleId :
AR1242337



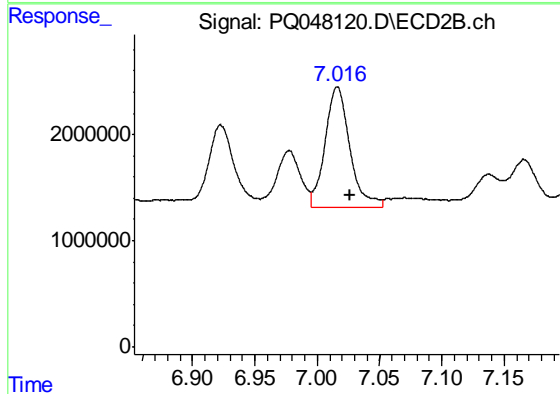
#27 AR-1254-2

R.T.: 6.593 min
Delta R.T.: -0.009 min
Response: 11882356
Conc: 69.14 ng/ml



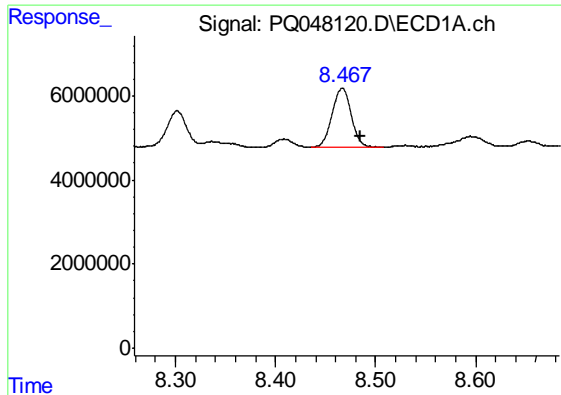
#28 AR-1254-3

R.T.: 8.169 min
Delta R.T.: -0.020 min
Response: 22648896
Conc: 47.23 ng/ml



#28 AR-1254-3

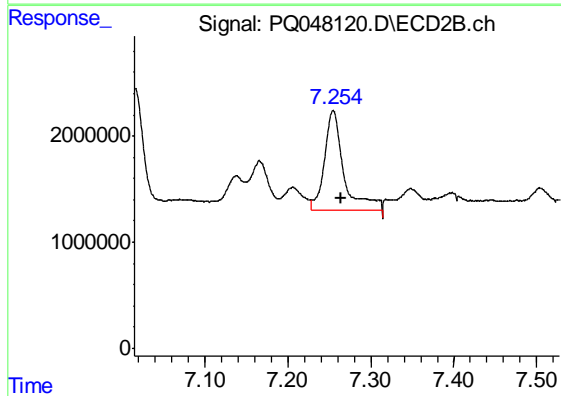
R.T.: 7.016 min
Delta R.T.: -0.010 min
Response: 15733045
Conc: 55.23 ng/ml



#29 AR-1254-4

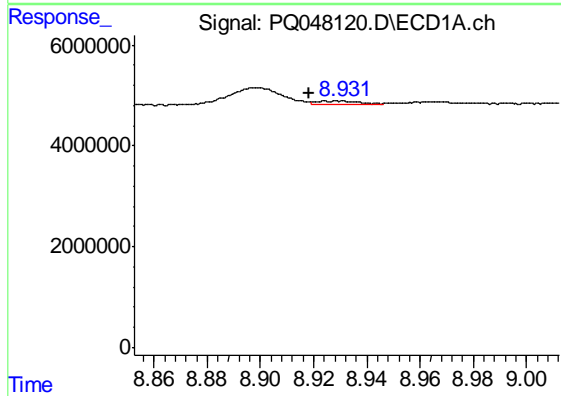
R.T.: 8.467 min
 Delta R.T.: -0.018 min
 Response: 18841264
 Conc: 51.16 ng/ml

Instrument :
 ECD_Q
 ClientSampleId :
 AR1242337



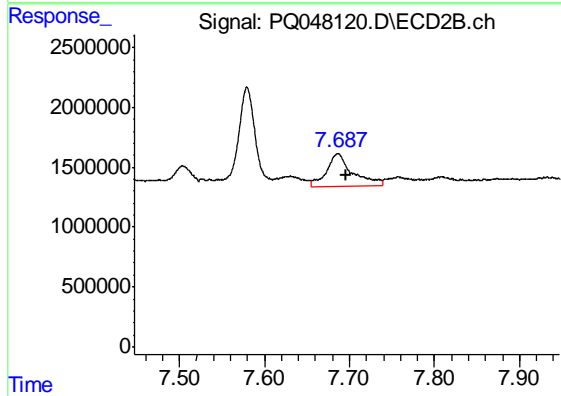
#29 AR-1254-4

R.T.: 7.255 min
 Delta R.T.: -0.009 min
 Response: 14981401
 Conc: 80.57 ng/ml



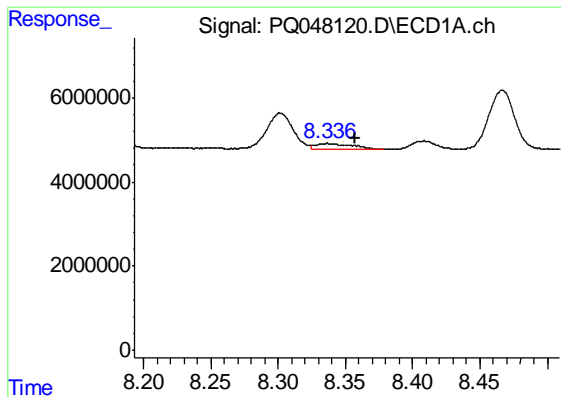
#30 AR-1254-5

R.T.: 8.924 min
 Delta R.T.: 0.006 min
 Response: 890513
 Conc: 2.21 ng/ml



#30 AR-1254-5

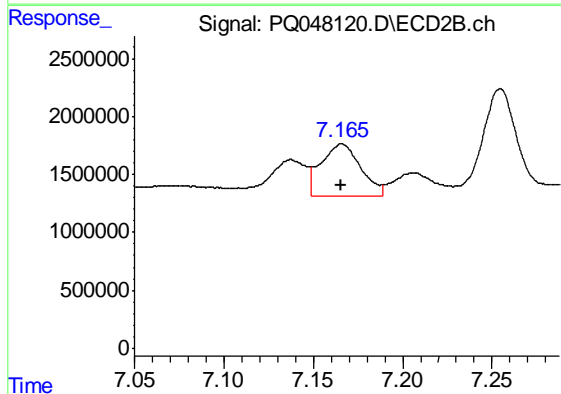
R.T.: 7.686 min
 Delta R.T.: -0.009 min
 Response: 5804526
 Conc: 22.70 ng/ml



#31 AR-1260-1

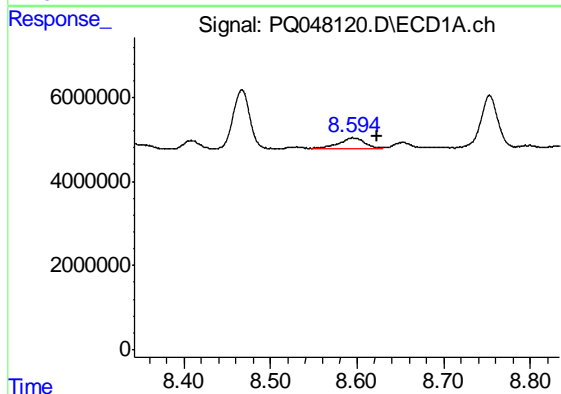
R.T.: 8.336 min
 Delta R.T.: -0.021 min
 Response: 2719704
 Conc: 8.03 ng/ml

Instrument :
 ECD_Q
 ClientSampled :
 AR1242337



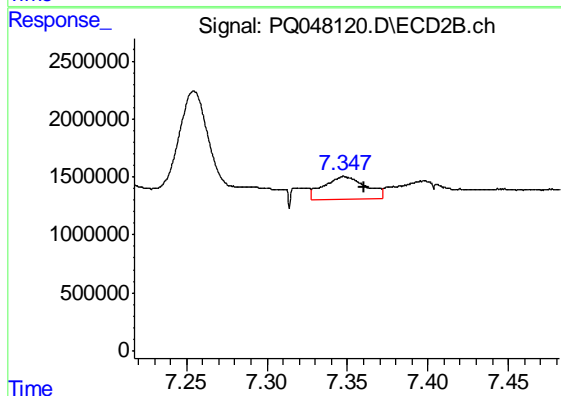
#31 AR-1260-1

R.T.: 7.166 min
 Delta R.T.: 0.000 min
 Response: 7006080
 Conc: 39.87 ng/ml



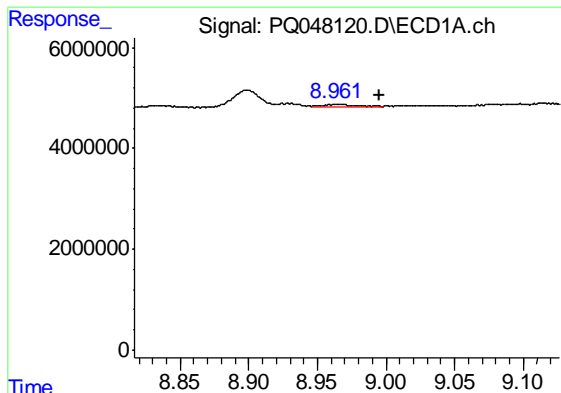
#32 AR-1260-2

R.T.: 8.595 min
 Delta R.T.: -0.028 min
 Response: 5300843
 Conc: 12.81 ng/ml



#32 AR-1260-2

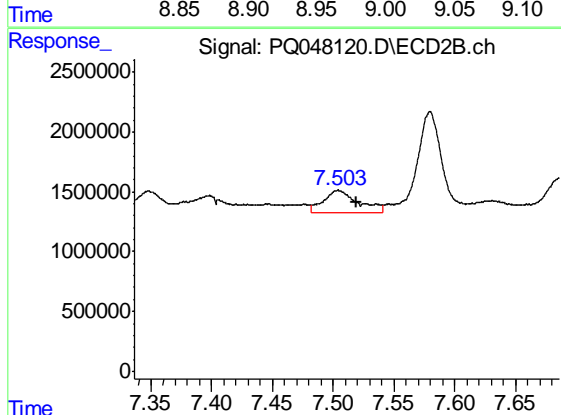
R.T.: 7.348 min
 Delta R.T.: -0.013 min
 Response: 3539105
 Conc: 16.24 ng/ml



#33 AR-1260-3

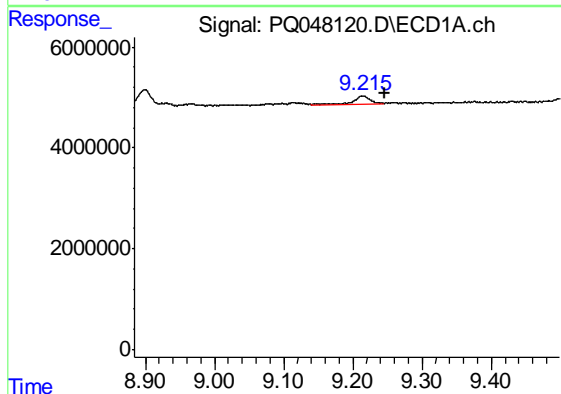
R.T.: 8.964 min
 Delta R.T.: -0.031 min
 Response: 899802
 Conc: 2.78 ng/ml

Instrument :
 ECD_Q
 ClientSampled :
 AR1242337



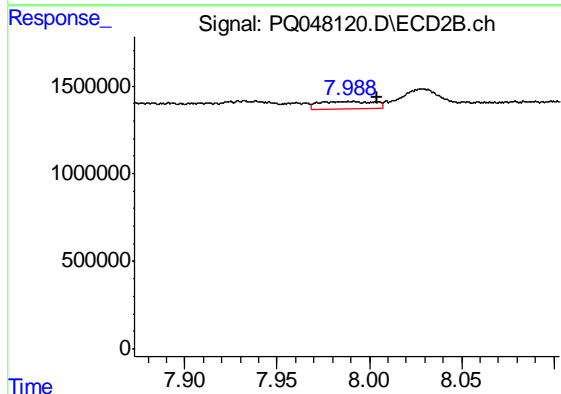
#33 AR-1260-3

R.T.: 7.504 min
 Delta R.T.: -0.015 min
 Response: 3774989
 Conc: 18.97 ng/ml



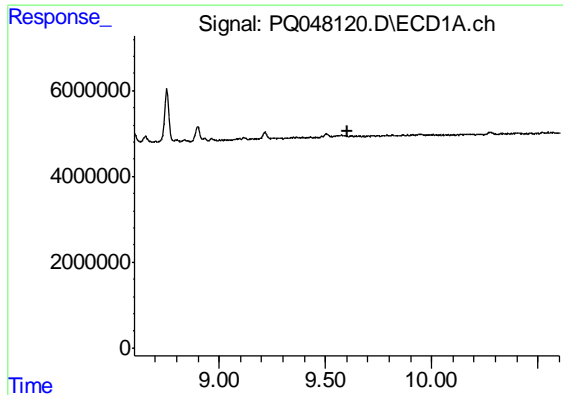
#34 AR-1260-4

R.T.: 9.215 min
 Delta R.T.: -0.030 min
 Response: 3065612
 Conc: 8.01 ng/ml



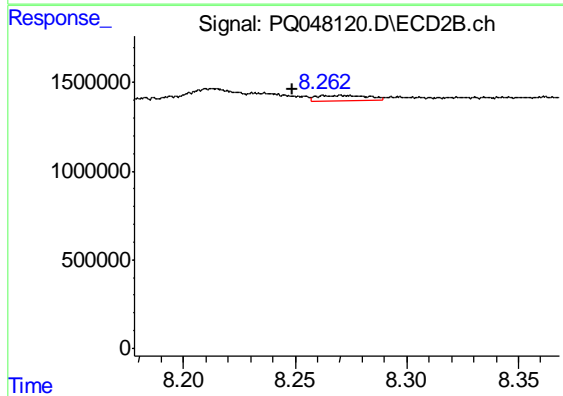
#34 AR-1260-4

R.T.: 7.991 min
 Delta R.T.: -0.013 min
 Response: 861333
 Conc: 4.98 ng/ml

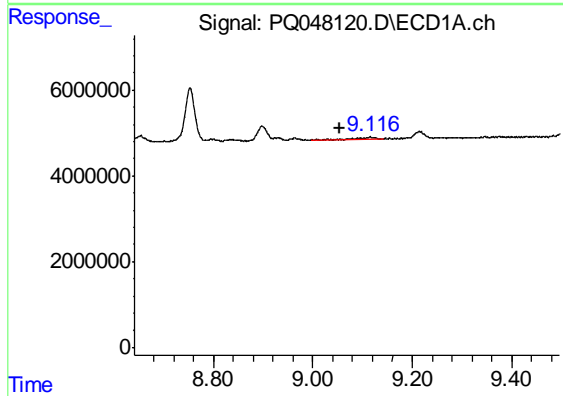


#35 AR-1260-5
 R.T.: 0.000 min
 Exp R.T. : 9.601 min
 Response: 0
 Conc: N.D.

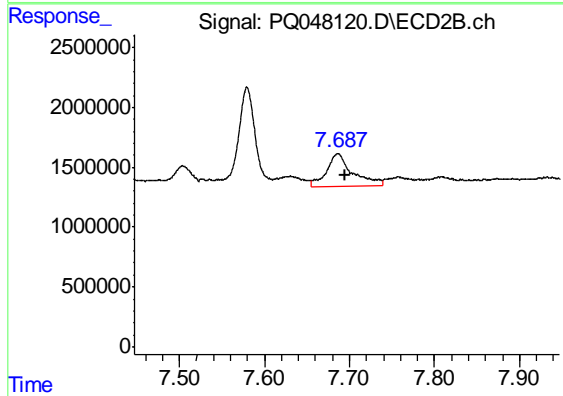
Instrument :
 ECD_Q
 ClientSampleId :
 AR1242337



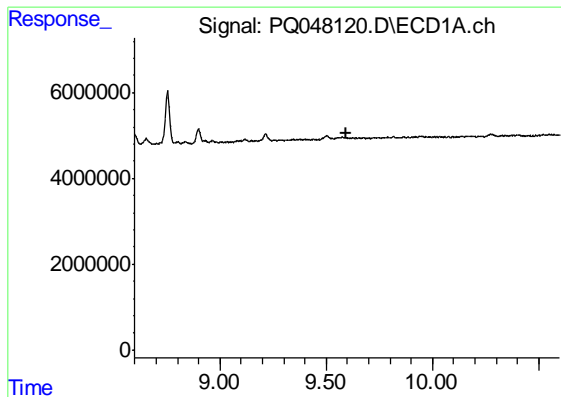
#35 AR-1260-5
 R.T.: 8.271 min
 Delta R.T.: 0.022 min
 Response: 479681
 Conc: 1.12 ng/ml



#36 AR-1262-1
 R.T.: 9.116 min
 Delta R.T.: 0.061 min
 Response: 1882652
 Conc: 9.30 ng/ml



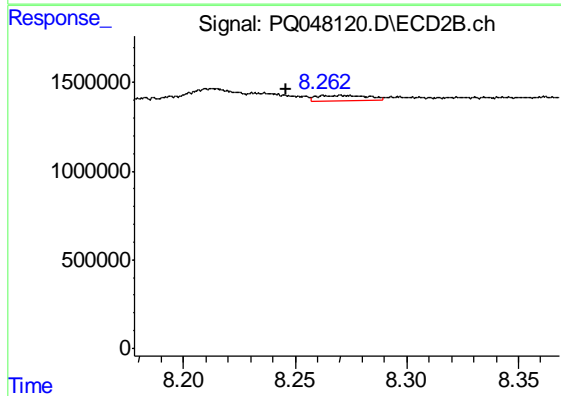
#36 AR-1262-1
 R.T.: 7.686 min
 Delta R.T.: -0.008 min
 Response: 5804526
 Conc: 40.90 ng/ml



#37 AR-1262-2

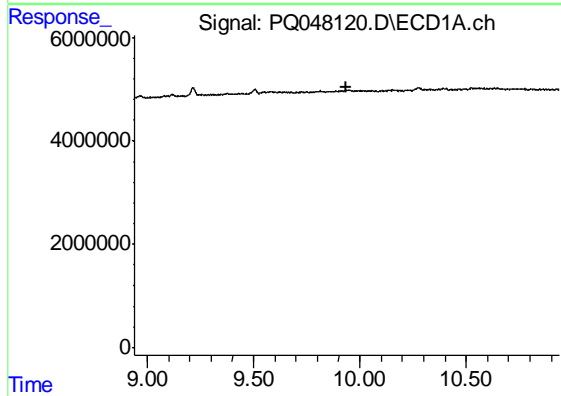
R.T.: 0.000 min
 Exp R.T. : 9.597 min
 Response: 0
 Conc: N.D.

Instrument :
 ECD_Q
 ClientSampleId :
 AR1242337



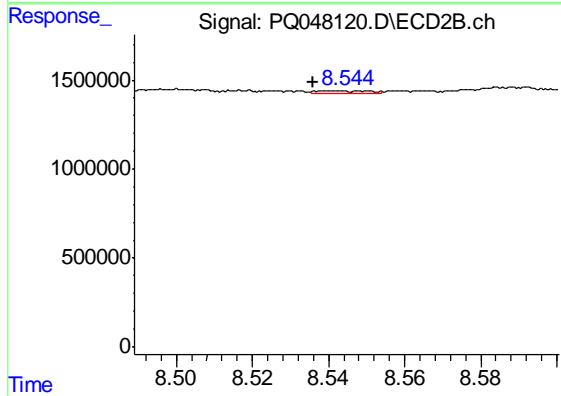
#37 AR-1262-2

R.T.: 8.271 min
 Delta R.T.: 0.025 min
 Response: 479681
 Conc: 0.93 ng/ml



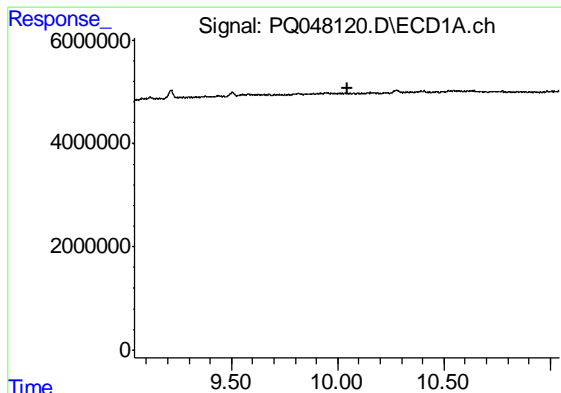
#38 AR-1262-3

R.T.: 0.000 min
 Exp R.T. : 9.939 min
 Response: 0
 Conc: N.D.



#38 AR-1262-3

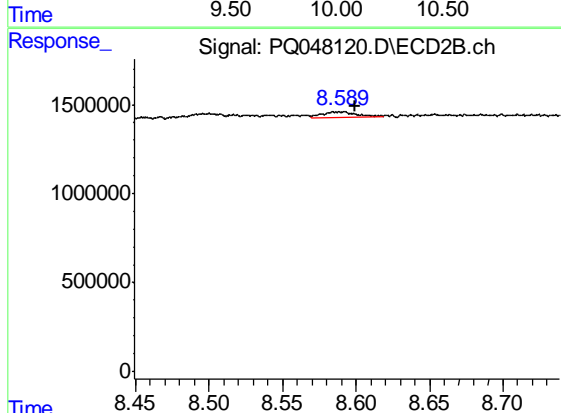
R.T.: 8.542 min
 Delta R.T.: 0.006 min
 Response: 153821
 Conc: 0.75 ng/ml



#39 AR-1262-4

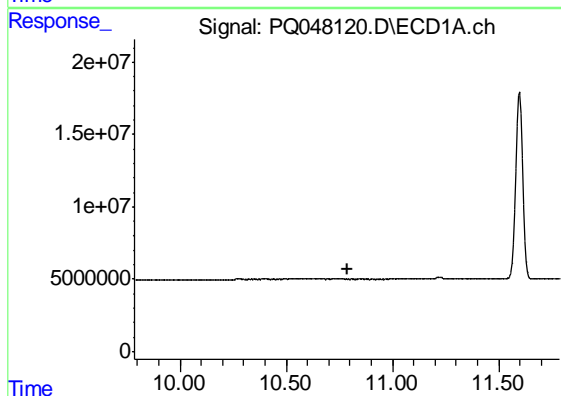
R.T.: 0.000 min
 Exp R.T. : 10.043 min
 Response: 0
 Conc: N.D.

Instrument :
 ECD_Q
 ClientSampleId :
 AR1242337



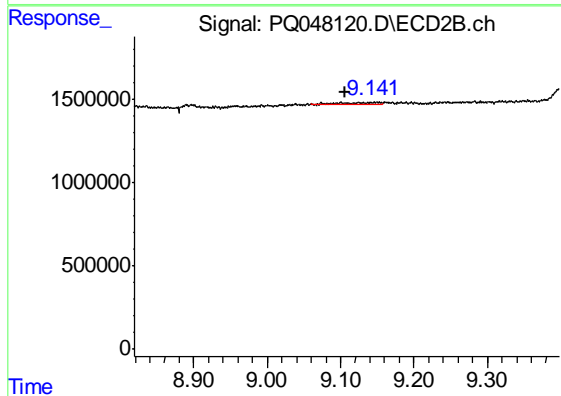
#39 AR-1262-4

R.T.: 8.586 min
 Delta R.T.: -0.014 min
 Response: 512095
 Conc: 1.35 ng/ml



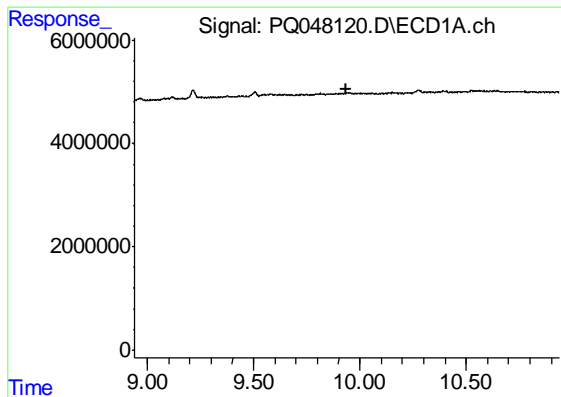
#40 AR-1262-5

R.T.: 0.000 min
 Exp R.T. : 10.786 min
 Response: 0
 Conc: N.D.



#40 AR-1262-5

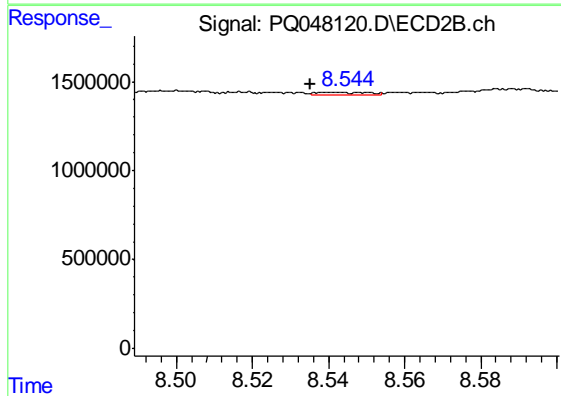
R.T.: 9.100 min
 Delta R.T.: -0.006 min
 Response: 212388
 Conc: 1.16 ng/ml



#41 AR-1268-1

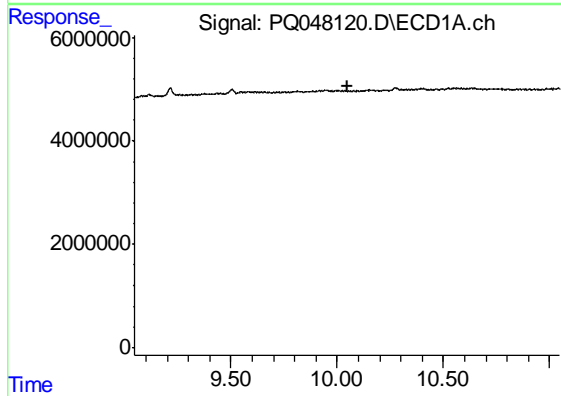
R.T.: 0.000 min
 Exp R.T. : 9.939 min
 Response: 0
 Conc: N.D.

Instrument :
 ECD_Q
 ClientSampleId :
 AR1242337



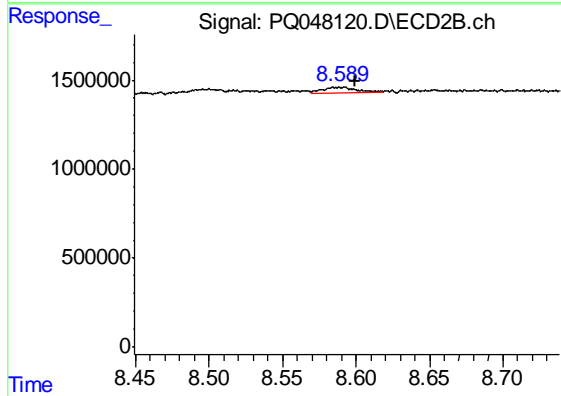
#41 AR-1268-1

R.T.: 8.542 min
 Delta R.T.: 0.006 min
 Response: 153821
 Conc: 0.26 ng/ml



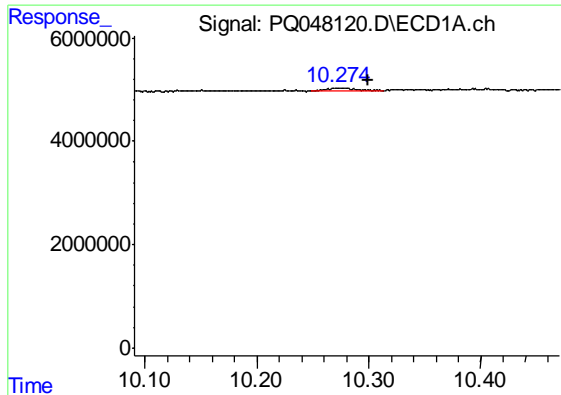
#42 AR-1268-2

R.T.: 0.000 min
 Exp R.T. : 10.046 min
 Response: 0
 Conc: N.D.



#42 AR-1268-2

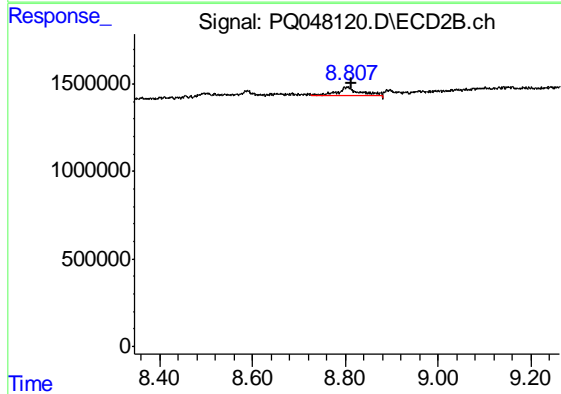
R.T.: 8.586 min
 Delta R.T.: -0.014 min
 Response: 512095
 Conc: 0.96 ng/ml



#43 AR-1268-3

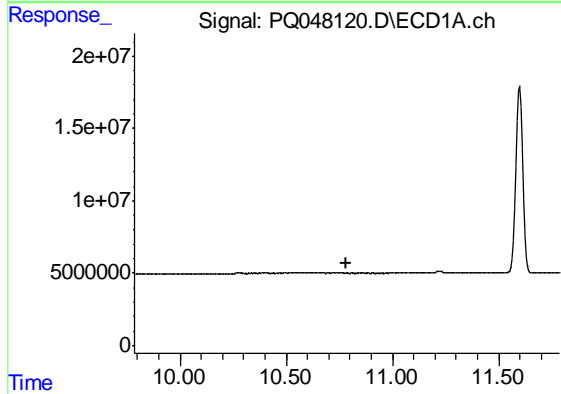
R.T.: 10.274 min
 Delta R.T.: -0.025 min
 Response: 1065204
 Conc: 1.26 ng/ml

Instrument :
 ECD_Q
 ClientSampleId :
 AR1242337



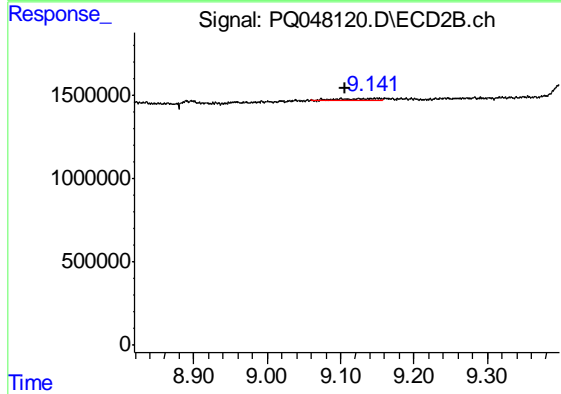
#43 AR-1268-3

R.T.: 8.806 min
 Delta R.T.: -0.006 min
 Response: 1653554
 Conc: 3.75 ng/ml



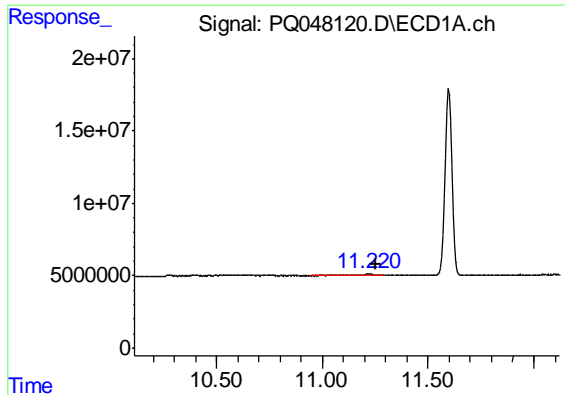
#44 AR-1268-4

R.T.: 0.000 min
 Exp R.T. : 10.785 min
 Response: 0
 Conc: N.D.



#44 AR-1268-4

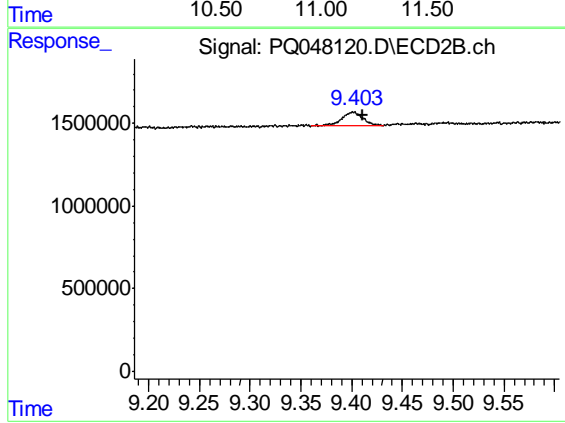
R.T.: 9.100 min
 Delta R.T.: -0.005 min
 Response: 212388
 Conc: 1.07 ng/ml



#45 AR-1268-5

R.T.: 11.219 min
Delta R.T.: -0.031 min
Response: 2592731
Conc: 0.90 ng/ml

Instrument :
ECD_Q
ClientSampleId :
AR1242337



#45 AR-1268-5

R.T.: 9.401 min
Delta R.T.: -0.010 min
Response: 1200071
Conc: 0.82 ng/ml