

Data Path : Z:\pestpcbsrv\HPCHEM1\ECD_Q\Data\PQ060920\
 Data File : PQ048201.D
 Signal(s) : Signal #1: ECD1A.ch Signal #2: ECD2B.ch
 Acq On : 09 Jun 2020 13:58
 Operator : AJ\MA
 Sample : AR1268ICV500
 Misc :
 ALS Vial : 20 Sample Multiplier: 1

Instrument :
 ECD_Q
ClientSampleId :
 ICVPQ060920AR1268

Integration File signal 1: autoint1.e
 Integration File signal 2: autoint2.e
 Quant Time: Jun 10 03:48:05 2020
 Quant Method : Z:\pestpcbsrv\HPCHEM1\ECD_Q\Method\PQ060920.M
 Quant Title : GC EXTRACTABLES
 QLast Update : Wed Jun 10 03:42:46 2020
 Response via : Initial Calibration
 Integrator: ChemStation

Volume Inj. : 2 µl
 Signal #1 Phase : ZB-MR1 Signal #2 Phase: ZB-MR2
 Signal #1 Info : 30Mx0.32mmx 0.50µ Signal #2 Info : 30M x 0.32mm x 0.25µm

Compound	RT#1	RT#2	Resp#1	Resp#2	ng/ml	ng/ml

System Monitoring Compounds						
1) SA Tetrachlo...	5.302	4.290	369.0E6	178.5E6	46.433	46.746
2) SA Decachlor...	11.586	9.666	689.2E6	365.0E6	45.855	46.493
Target Compounds						
26) L6 AR-1254-1	7.550	6.431	2106260	1351743	7.031	5.721
27) L6 AR-1254-2	7.787	6.592	2499168	443336	5.400	2.162 #
28) L6 AR-1254-3	0.000	7.014	0	1769815	N.D.	5.274 #
29) L6 AR-1254-4	8.460	7.252	1688714	944760	4.460	4.302
30) L6 AR-1254-5	8.872	7.683	3387637	354673	8.476	1.214 #
41) L9 AR-1268-1	9.910	8.524	523.6E6	321.5E6	461.680	468.459
42) L9 AR-1268-2	10.015	8.589	506.1E6	297.5E6	463.475	468.199
43) L9 AR-1268-3	10.266	8.801	431.0E6	247.3E6	463.275	467.136
44) L9 AR-1268-4	10.750	9.094	196.5E6	107.6E6	465.445	461.746
45) L9 AR-1268-5	11.210	9.399	1476.9E6	831.5E6	463.961	474.961

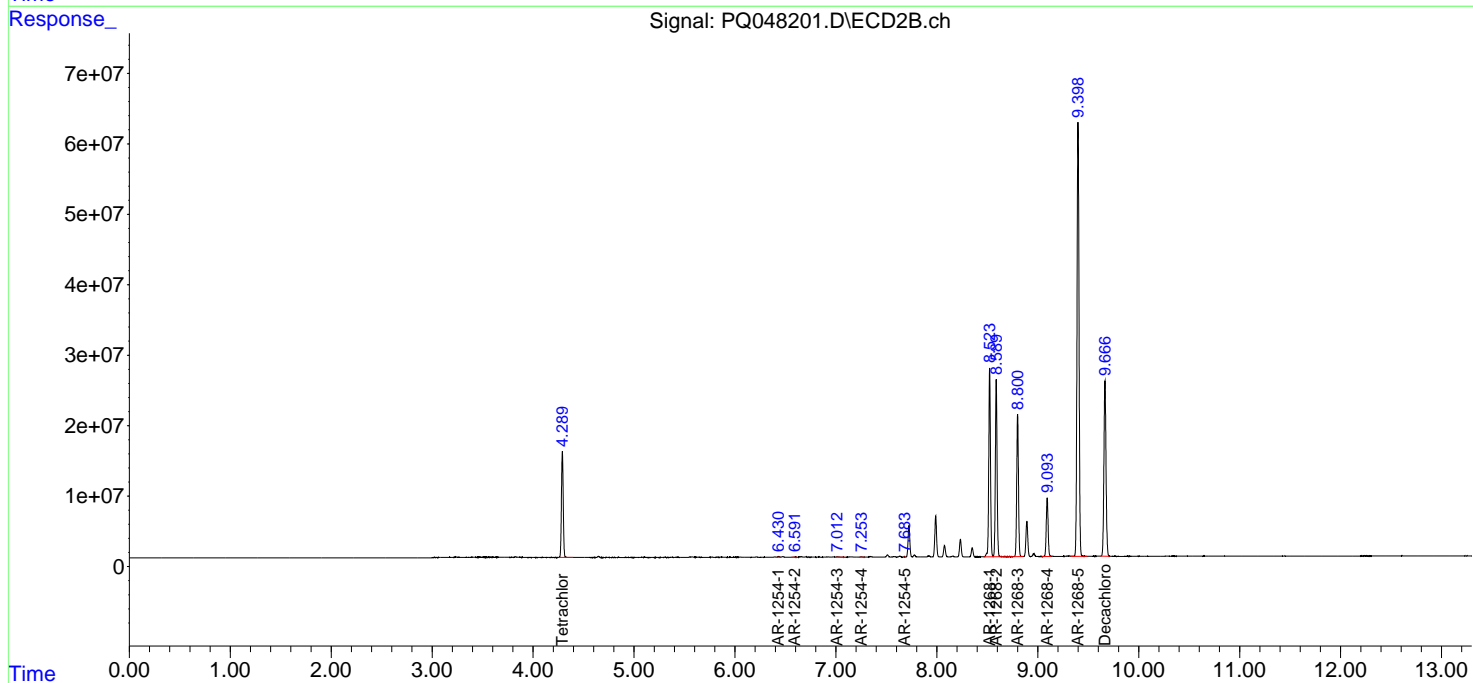
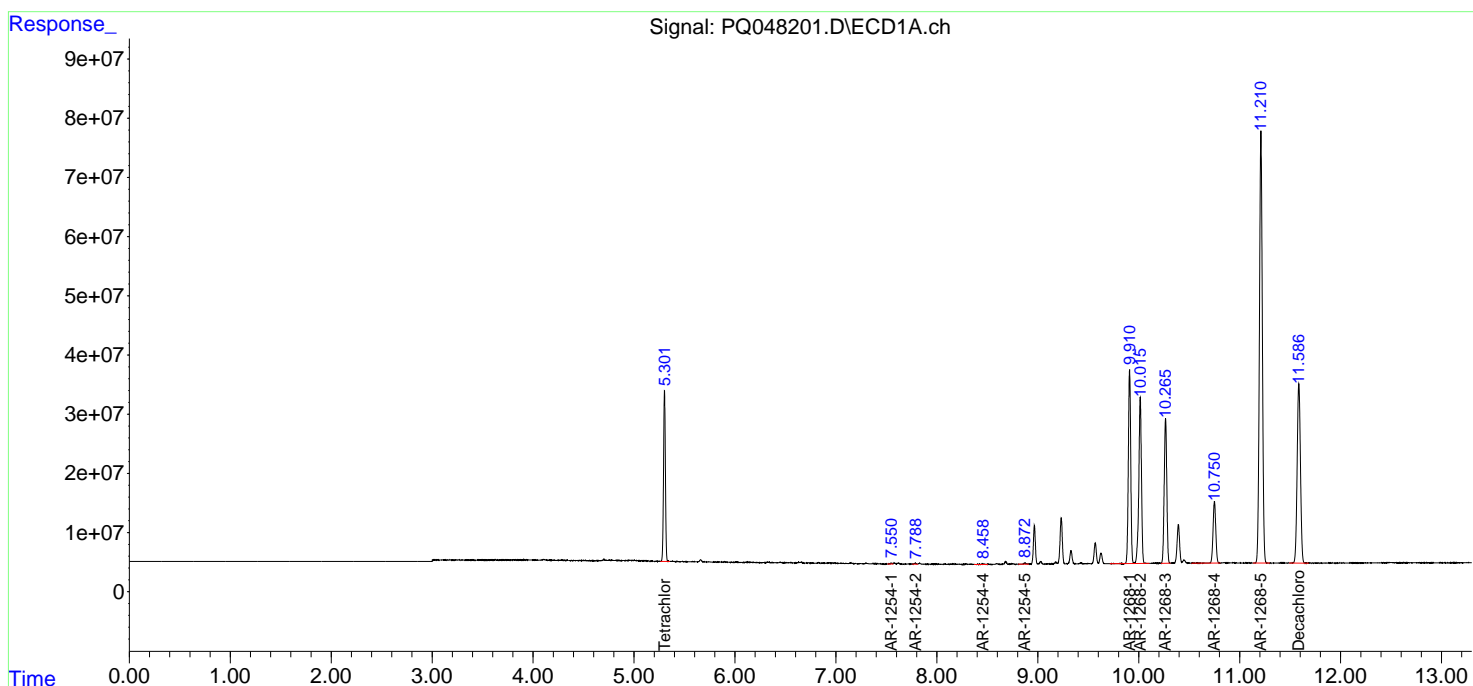
(f)=RT Delta > 1/2 Window (#)=Amounts differ by > 25% (m)=manual int.

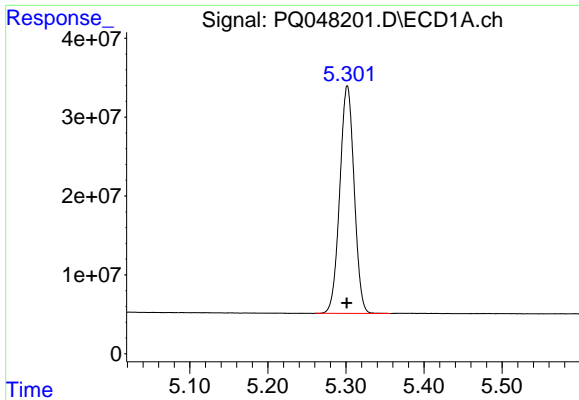
Data Path : Z:\pestpcbsrv\HPCHEM1\ECD_Q\Data\PQ060920\
 Data File : PQ048201.D
 Signal(s) : Signal #1: ECD1A.ch Signal #2: ECD2B.ch
 Acq On : 09 Jun 2020 13:58
 Operator : AJ\MA
 Sample : AR1268ICV500
 Misc :
 ALS Vial : 20 Sample Multiplier: 1

Instrument :
 ECD_Q
Client Sampled :
 ICVPQ060920AR1268

Integration File signal 1: autoint1.e
 Integration File signal 2: autoint2.e
 Quant Time: Jun 10 03:48:05 2020
 Quant Method : Z:\pestpcbsrv\HPCHEM1\ECD_Q\Method\PQ060920.M
 Quant Title : GC EXTRACTABLES
 QLast Update : Wed Jun 10 03:42:46 2020
 Response via : Initial Calibration
 Integrator: ChemStation

Volume Inj. : 2 µl
 Signal #1 Phase : ZB-MR1 Signal #2 Phase: ZB-MR2
 Signal #1 Info : 30Mx0.32mmx 0.50µ Signal #2 Info : 30M x 0.32mm x 0.25µm

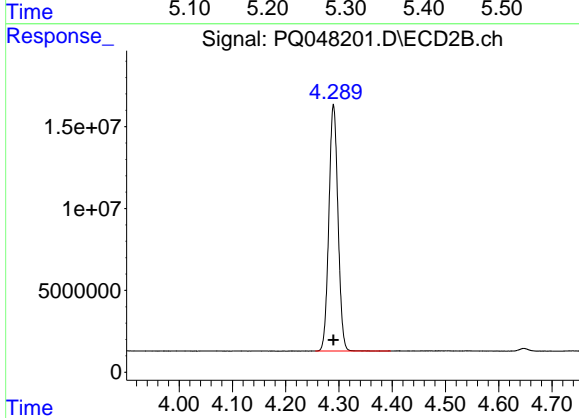




#1 Tetrachloro-m-xylene

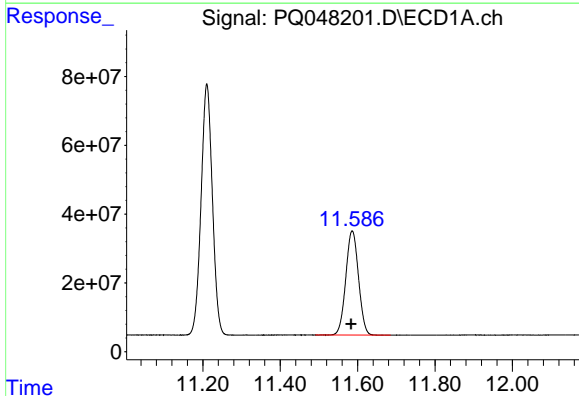
R.T.: 5.302 min
 Delta R.T.: 0.000 min
 Response: 368984266
 Conc: 46.43 ng/ml

Instrument :
 ECD_Q
 ClientSampleId :
 ICVPQ060920AR1268



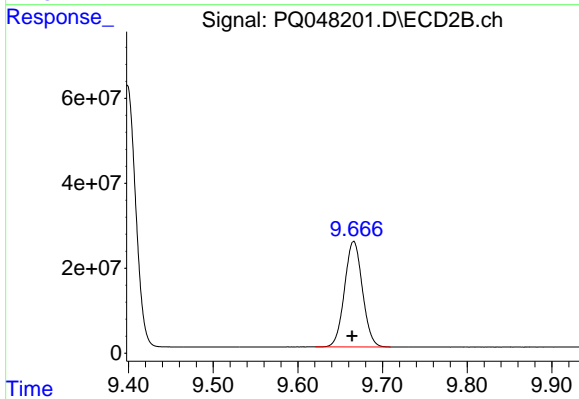
#1 Tetrachloro-m-xylene

R.T.: 4.290 min
 Delta R.T.: 0.000 min
 Response: 178482009
 Conc: 46.75 ng/ml



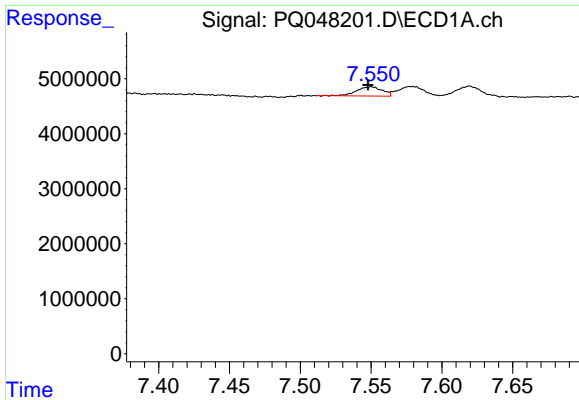
#2 Decachlorobiphenyl

R.T.: 11.586 min
 Delta R.T.: 0.003 min
 Response: 689206959
 Conc: 45.86 ng/ml



#2 Decachlorobiphenyl

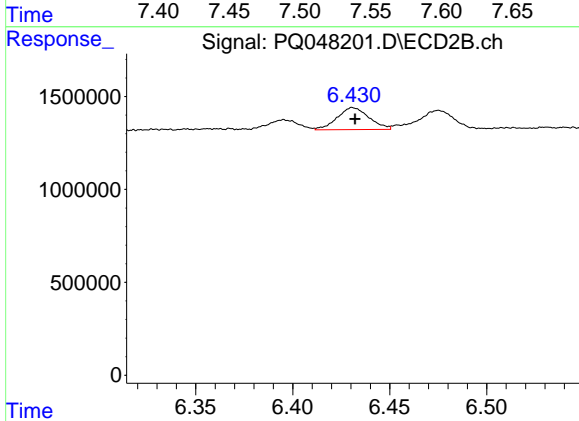
R.T.: 9.666 min
 Delta R.T.: 0.002 min
 Response: 364968501
 Conc: 46.49 ng/ml



#26 AR-1254-1

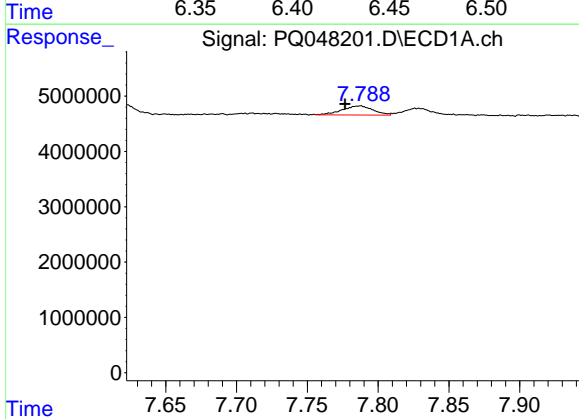
R.T.: 7.550 min
 Delta R.T.: 0.002 min
 Response: 2106260
 Conc: 7.03 ng/ml

Instrument :
 ECD_Q
 ClientSampleId :
 ICVPQ060920AR1268



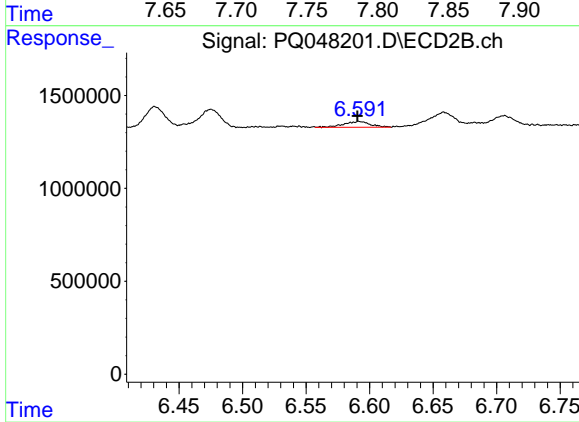
#26 AR-1254-1

R.T.: 6.431 min
 Delta R.T.: 0.000 min
 Response: 1351743
 Conc: 5.72 ng/ml



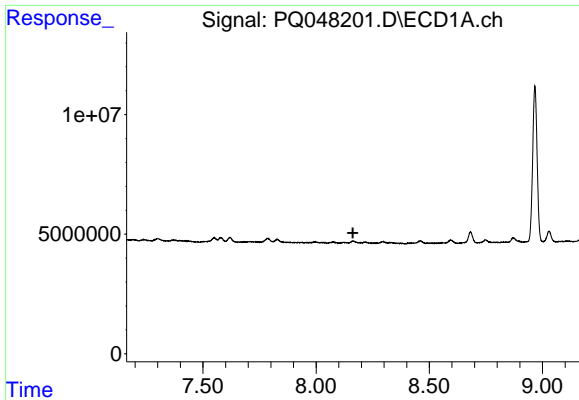
#27 AR-1254-2

R.T.: 7.787 min
 Delta R.T.: 0.010 min
 Response: 2499168
 Conc: 5.40 ng/ml



#27 AR-1254-2

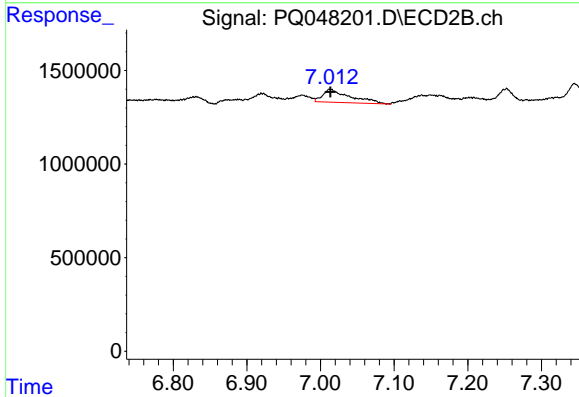
R.T.: 6.592 min
 Delta R.T.: 0.001 min
 Response: 443336
 Conc: 2.16 ng/ml



#28 AR-1254-3

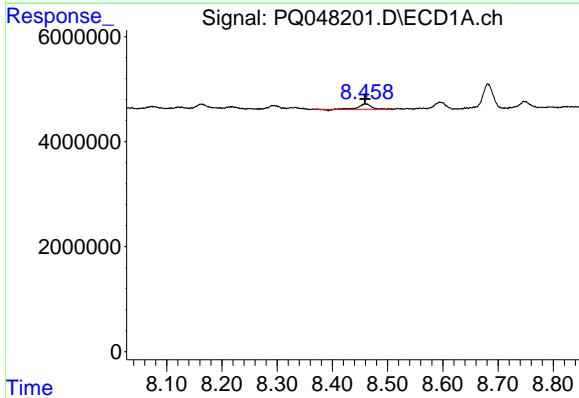
R.T.: 0.000 min
 Exp R.T.: 8.163 min
 Response: 0
 Conc: N.D.

Instrument :
 ECD_Q
 ClientSampleId :
 ICVPQ060920AR1268



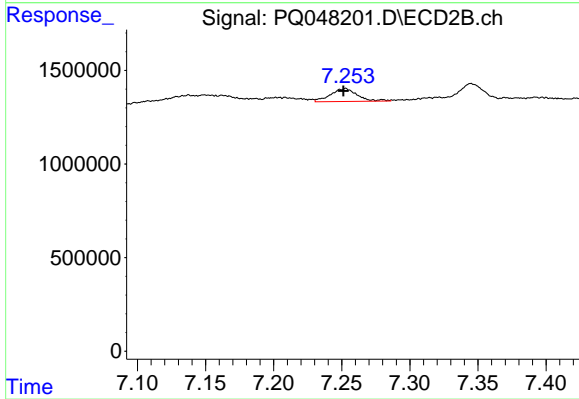
#28 AR-1254-3

R.T.: 7.014 min
 Delta R.T.: 0.000 min
 Response: 1769815
 Conc: 5.27 ng/ml



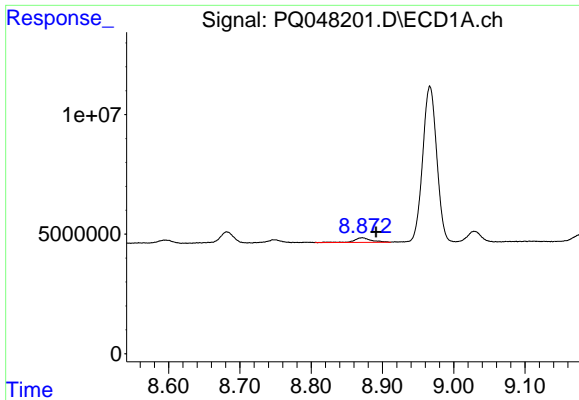
#29 AR-1254-4

R.T.: 8.460 min
 Delta R.T.: 0.000 min
 Response: 1688714
 Conc: 4.46 ng/ml



#29 AR-1254-4

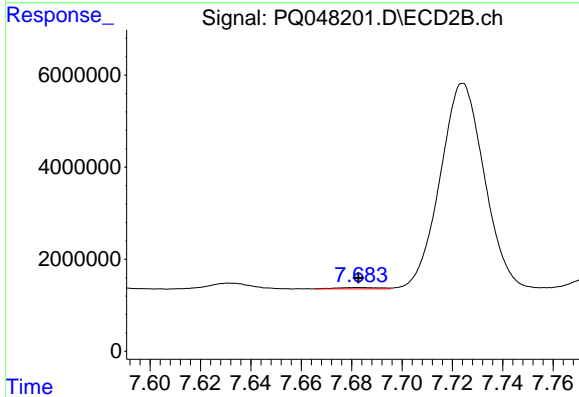
R.T.: 7.252 min
 Delta R.T.: 0.000 min
 Response: 944760
 Conc: 4.30 ng/ml



#30 AR-1254-5

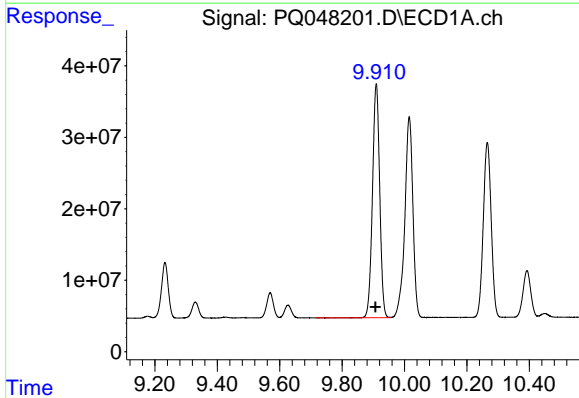
R.T.: 8.872 min
 Delta R.T.: -0.020 min
 Response: 3387637
 Conc: 8.48 ng/ml

Instrument :
 ECD_Q
ClientSampleId :
 ICVPQ060920AR1268



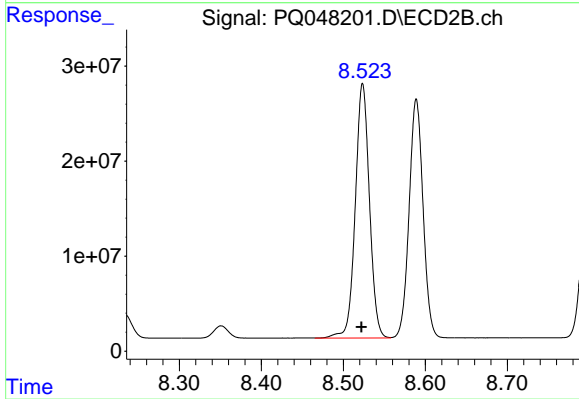
#30 AR-1254-5

R.T.: 7.683 min
 Delta R.T.: 0.000 min
 Response: 354673
 Conc: 1.21 ng/ml



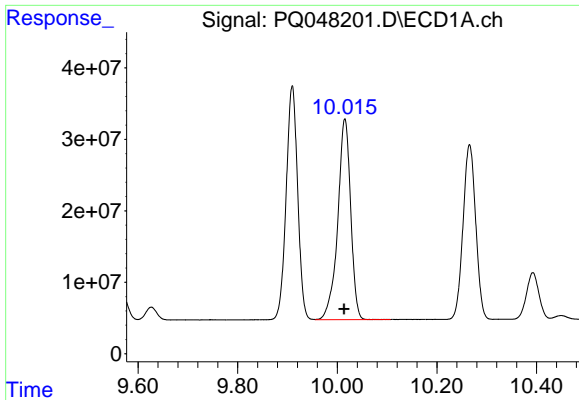
#41 AR-1268-1

R.T.: 9.910 min
 Delta R.T.: 0.003 min
 Response: 523616477
 Conc: 461.68 ng/ml



#41 AR-1268-1

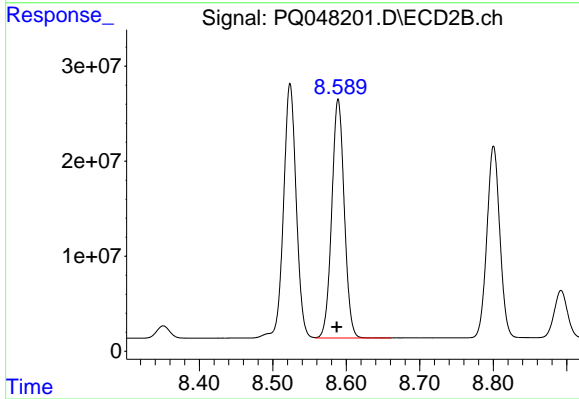
R.T.: 8.524 min
 Delta R.T.: 0.001 min
 Response: 321499651
 Conc: 468.46 ng/ml



#42 AR-1268-2

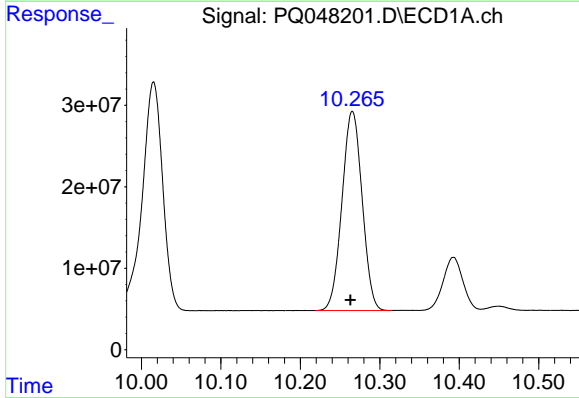
R.T.: 10.015 min
 Delta R.T.: 0.002 min
 Response: 506087700
 Conc: 463.47 ng/ml

Instrument :
 ECD_Q
 ClientSampleId :
 ICVPQ060920AR1268



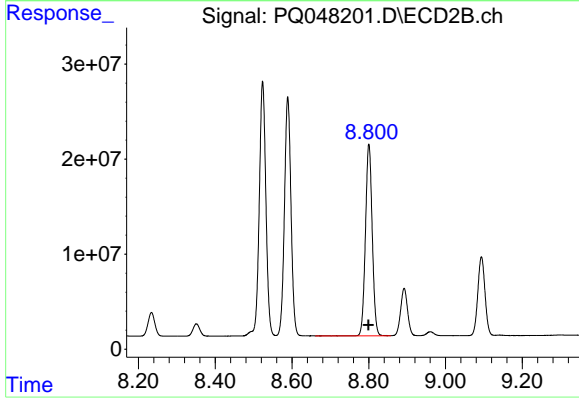
#42 AR-1268-2

R.T.: 8.589 min
 Delta R.T.: 0.002 min
 Response: 297465200
 Conc: 468.20 ng/ml



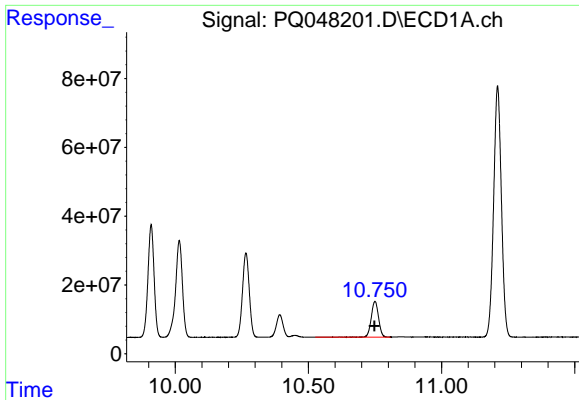
#43 AR-1268-3

R.T.: 10.266 min
 Delta R.T.: 0.002 min
 Response: 430950057
 Conc: 463.28 ng/ml



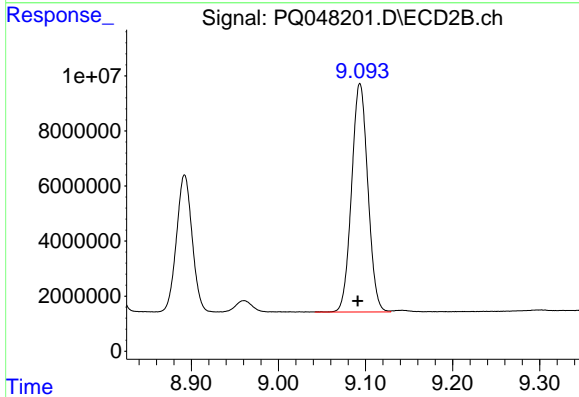
#43 AR-1268-3

R.T.: 8.801 min
 Delta R.T.: 0.002 min
 Response: 247330132
 Conc: 467.14 ng/ml

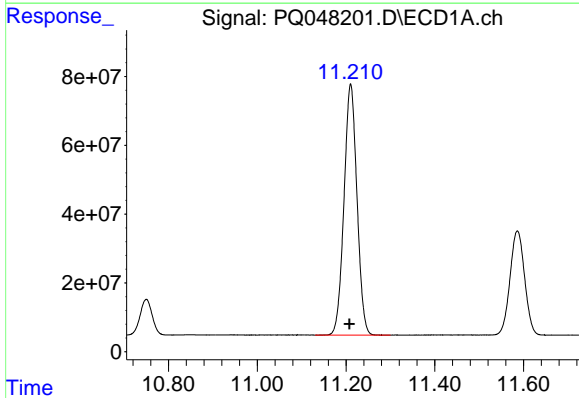


#44 AR-1268-4
 R.T.: 10.750 min
 Delta R.T.: 0.002 min
 Response: 196472105
 Conc: 465.44 ng/ml

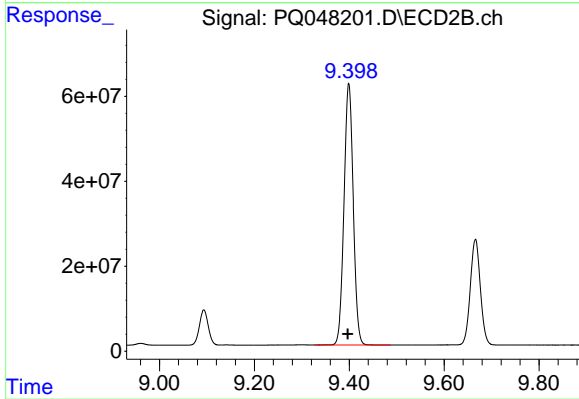
Instrument :
 ECD_Q
 ClientSampleId :
 ICVPQ060920AR1268



#44 AR-1268-4
 R.T.: 9.094 min
 Delta R.T.: 0.002 min
 Response: 107577038
 Conc: 461.75 ng/ml



#45 AR-1268-5
 R.T.: 11.210 min
 Delta R.T.: 0.003 min
 Response: 1476874769
 Conc: 463.96 ng/ml



#45 AR-1268-5
 R.T.: 9.399 min
 Delta R.T.: 0.002 min
 Response: 831539541
 Conc: 474.96 ng/ml