

Data Path : Z:\pestpcbsrv\HPCHEM1\ECD\_Q\Data\PQ061020\  
 Data File : PQ048320.D  
 Signal(s) : Signal #1: ECD1A.ch Signal #2: ECD2B.ch  
 Acq On : 11 Jun 2020 08:38  
 Operator : AJ\MA  
 Sample : PB129423BSD  
 Misc :  
 ALS Vial : 65 Sample Multiplier: 1

Instrument :  
 ECD\_Q  
 ClientSampled :

Integration File signal 1: autoint1.e  
 Integration File signal 2: autoint2.e  
 Quant Time: Jun 11 12:02:17 2020  
 Quant Method : Z:\pestpcbsrv\HPCHEM1\ECD\_Q\Method\PQ060920.M  
 Quant Title : GC EXTRACTABLES  
 QLast Update : Wed Jun 10 03:52:33 2020  
 Response via : Initial Calibration  
 Integrator: ChemStation

Volume Inj. : 2 µl  
 Signal #1 Phase : ZB-MR1 Signal #2 Phase: ZB-MR2  
 Signal #1 Info : 30Mx0.32mmx 0.50µ Signal #2 Info : 30M x 0.32mm x 0.25µm

| Compound                    | RT#1   | RT#2  | Resp#1   | Resp#2   | ng/ml   | ng/ml     |
|-----------------------------|--------|-------|----------|----------|---------|-----------|
| -----                       |        |       |          |          |         |           |
| System Monitoring Compounds |        |       |          |          |         |           |
| 1) SA Tetrachlo...          | 5.297  | 4.291 | 231.3E6  | 106.9E6  | 27.073  | 25.893    |
| 2) SA Decachlor...          | 11.573 | 9.661 | 189.0E6  | 86234313 | 20.385  | 19.267    |
| Target Compounds            |        |       |          |          |         |           |
| 3) L1 AR-1016-1             | 6.627  | 5.556 | 73409764 | 35968345 | 245.805 | 231.216   |
| 4) L1 AR-1016-2             | 6.651  | 5.576 | 100.5E6  | 48931702 | 245.977 | 231.298   |
| 5) L1 AR-1016-3             | 6.719  | 5.770 | 61200793 | 25370800 | 242.098 | 233.576   |
| 6) L1 AR-1016-4             | 6.828  | 5.819 | 50594193 | 20854953 | 245.285 | 233.278   |
| 7) L1 AR-1016-5             | 7.143  | 6.051 | 48456314 | 22910630 | 245.029 | 234.484   |
| 8) L2 AR-1221-1             | 5.543  | 4.547 | 6734494  | 3558057  | 75.393  | 82.558    |
| 9) L2 AR-1221-2             | 5.649  | 4.649 | 10484391 | 5032738  | 153.783 | 154.347   |
| 10) L2 AR-1221-3            | 5.737  | 4.738 | 38798345 | 18761769 | 184.612 | 184.156   |
| 11) L3 AR-1232-1            | 5.737  | 4.738 | 38798345 | 18761769 | 229.904 | 229.913   |
| 12) L3 AR-1232-2            | 6.332  | 5.576 | 50338398 | 48931702 | 587.599 | 573.033   |
| 13) L3 AR-1232-3            | 6.651  | 5.770 | 100.5E6  | 25370800 | 600.268 | 588.294   |
| 14) L3 AR-1232-4            | 6.828  | 5.865 | 50594193 | 25121148 | 596.305 | 640.859   |
| 15) L3 AR-1232-5            | 6.922  | 6.051 | 44029708 | 22910630 | 694.878 | 587.373   |
| 16) L4 AR-1242-1            | 6.627  | 5.556 | 73409764 | 35968345 | 324.272 | 312.201   |
| 17) L4 AR-1242-2            | 6.651  | 5.576 | 100.5E6  | 48931702 | 325.413 | 310.496   |
| 18) L4 AR-1242-3            | 6.719  | 5.770 | 61200793 | 25370800 | 319.529 | 309.198   |
| 19) L4 AR-1242-4            | 6.828  | 5.865 | 50594193 | 25121148 | 319.088 | 310.774   |
| 20) L4 AR-1242-5            | 7.613  | 6.430 | 7184086  | 21949120 | 42.280  | 205.107 # |
| 21) L5 AR-1248-1            | 6.627  | 5.556 | 73409764 | 35968345 | 422.978 | 407.183   |
| 22) L5 AR-1248-2            | 6.922  | 5.819 | 44029708 | 20854953 | 197.947 | 185.895   |
| 23) L5 AR-1248-3            | 7.143  | 5.865 | 48456314 | 25121148 | 198.573 | 220.778   |
| 24) L5 AR-1248-4            | 7.573  | 6.051 | 7334655  | 22910630 | 26.520  | 168.893 # |
| 25) L5 AR-1248-5            | 7.613  | 6.473 | 7184086  | 3619971  | 27.327  | 26.309    |
| 26) L6 AR-1254-1            | 7.543  | 6.430 | 40083891 | 21949120 | 133.810 | 92.902 #  |
| 27) L6 AR-1254-2            | 7.770  | 6.588 | 37356407 | 19620736 | 80.723  | 95.673    |
| 28) L6 AR-1254-3            | 8.157  | 7.029 | 24672965 | 31531367 | 50.623  | 93.954 #  |
| 29) L6 AR-1254-4            | 8.453  | 7.250 | 13838458 | 3448509  | 36.550  | 15.702 #  |
| 30) L6 AR-1254-5            | 8.885  | 7.680 | 111.8E6  | 59363441 | 279.623 | 203.207 # |
| 31) L7 AR-1260-1            | 8.323  | 7.149 | 79761805 | 44227925 | 237.868 | 220.217   |
| 32) L7 AR-1260-2            | 8.588  | 7.343 | 92287093 | 53611248 | 230.045 | 216.463   |
| 33) L7 AR-1260-3            | 8.959  | 7.501 | 60148077 | 47942463 | 190.360 | 212.633   |
| 34) L7 AR-1260-4            | 9.206  | 7.986 | 77406532 | 34073139 | 209.755 | 177.494   |
| 35) L7 AR-1260-5            | 9.561  | 8.231 | 152.9E6  | 81663614 | 180.027 | 170.846   |
| 36) L8 AR-1262-1            | 8.959  | 7.680 | 60148077 | 59363441 | 138.644 | 419.475 # |
| 37) L8 AR-1262-2            | 9.561  | 8.231 | 152.9E6  | 81663614 | 184.302 | 154.914   |
| 38) L8 AR-1262-3            | 9.901  | 8.521 | 28450096 | 17471967 | 73.440  | 81.237    |
| 39) L8 AR-1262-4            | 9.985  | 8.583 | 54514231 | 60303185 | 120.260 | 156.671 # |
| 40) L8 AR-1262-5            | 10.739 | 9.089 | 85811169 | 19707721 | 254.264 | 107.298 # |
| 41) L9 AR-1268-1            | 9.901  | 8.521 | 28450096 | 17471967 | 25.085  | 25.458    |

Data Path : Z:\pestpcbsrv\HPCHEM1\ECD\_Q\Data\PQ061020\  
 Data File : PQ048320.D  
 Signal(s) : Signal #1: ECD1A.ch Signal #2: ECD2B.ch  
 Acq On : 11 Jun 2020 08:38  
 Operator : AJ\MA  
 Sample : PB129423BSD  
 Misc :  
 ALS Vial : 65 Sample Multiplier: 1

Instrument :  
 ECD\_Q  
 ClientSampleId :

Integration File signal 1: autoint1.e  
 Integration File signal 2: autoint2.e  
 Quant Time: Jun 11 12:02:17 2020  
 Quant Method : Z:\pestpcbsrv\HPCHEM1\ECD\_Q\Method\PQ060920.M  
 Quant Title : GC EXTRACTABLES  
 QLast Update : Wed Jun 10 03:52:33 2020  
 Response via : Initial Calibration  
 Integrator: ChemStation

Volume Inj. : 2 µl  
 Signal #1 Phase : ZB-MR1 Signal #2 Phase: ZB-MR2  
 Signal #1 Info : 30Mx0.32mmx 0.50µ Signal #2 Info : 30M x 0.32mm x 0.25µm

|     | Compound     | RT#1   | RT#2  | Resp#1   | Resp#2   | ng/ml   | ng/ml    |
|-----|--------------|--------|-------|----------|----------|---------|----------|
| 42) | L9 AR-1268-2 | 9.985  | 8.583 | 54514231 | 60303185 | 49.924  | 94.915 # |
| 43) | L9 AR-1268-3 | 0.000  | 8.796 | 0        | 2259737  | N.D.    | 4.268 #  |
| 44) | L9 AR-1268-4 | 10.739 | 9.089 | 85811169 | 19707721 | 203.288 | 84.590 # |
| 45) | L9 AR-1268-5 | 11.198 | 9.394 | 15361099 | 7485814  | 4.826   | 4.276    |

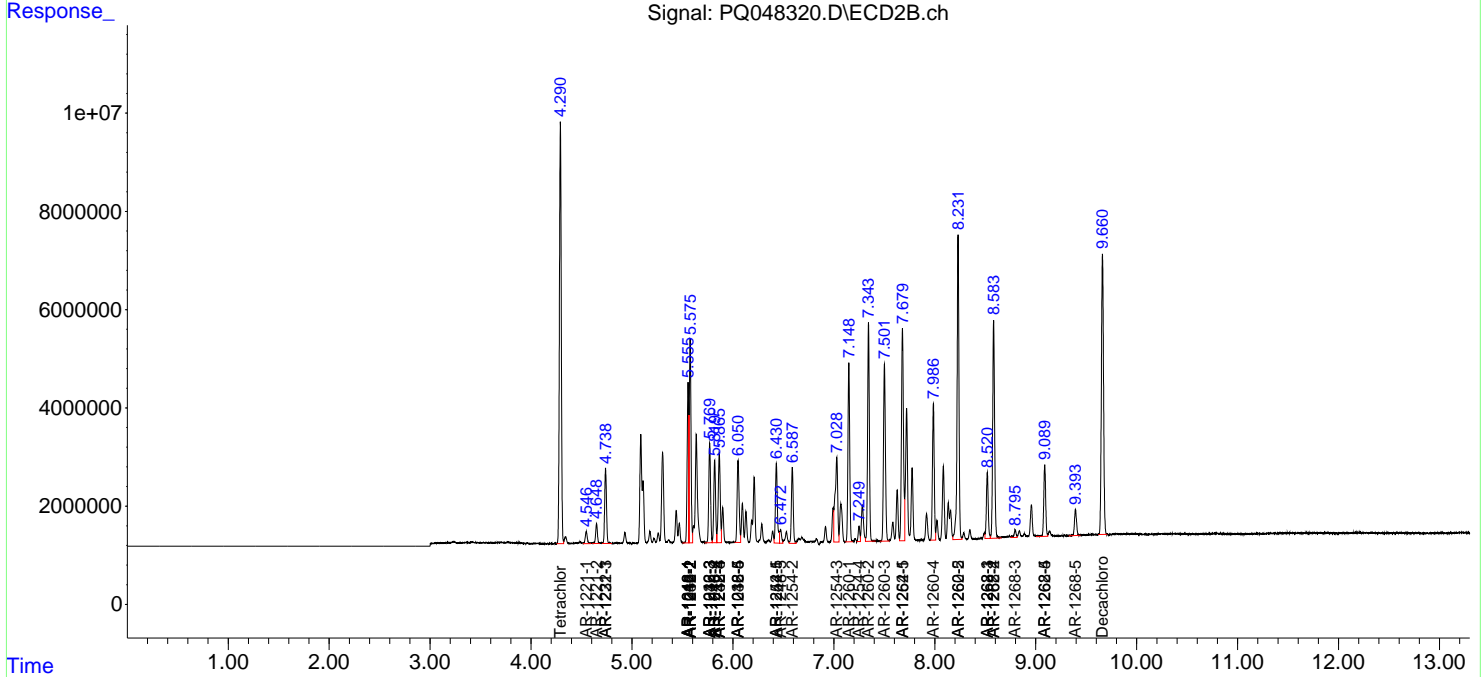
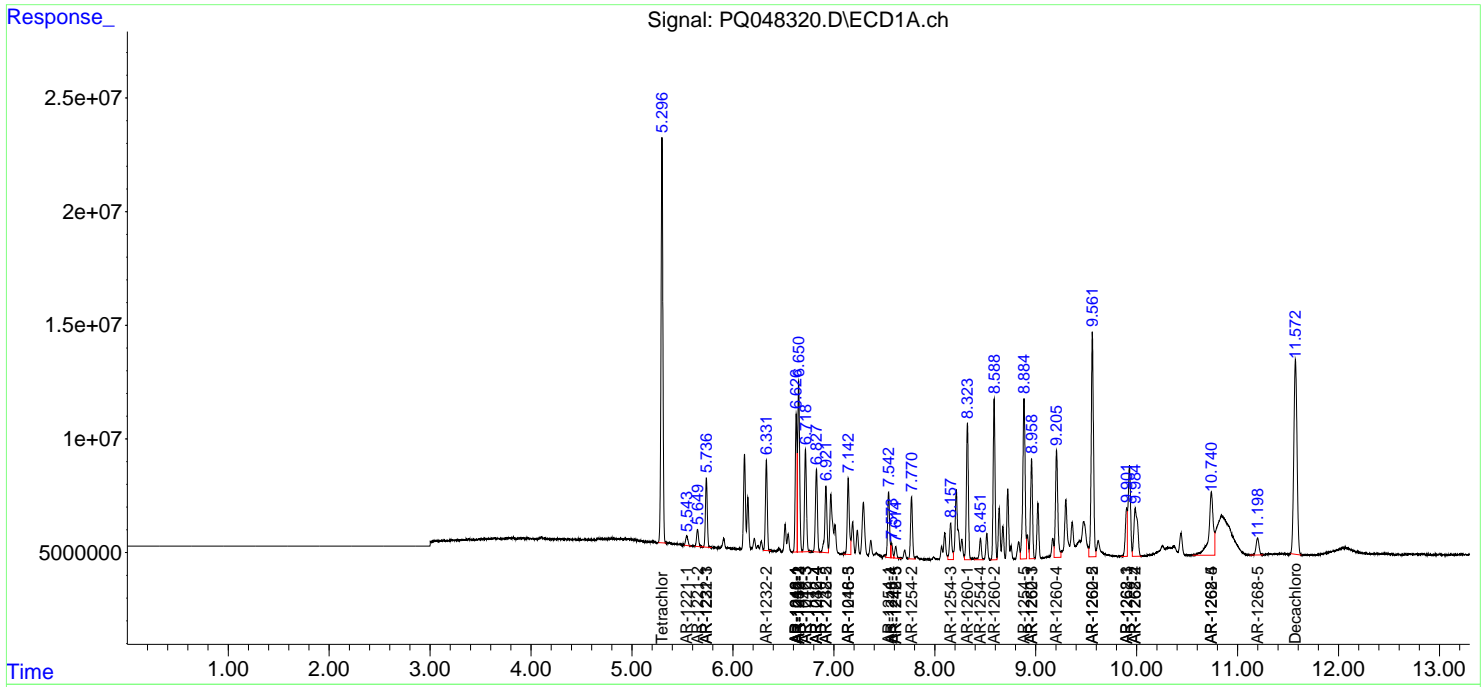
(f)=RT Delta > 1/2 Window (#)=Amounts differ by > 25% (m)=manual int.

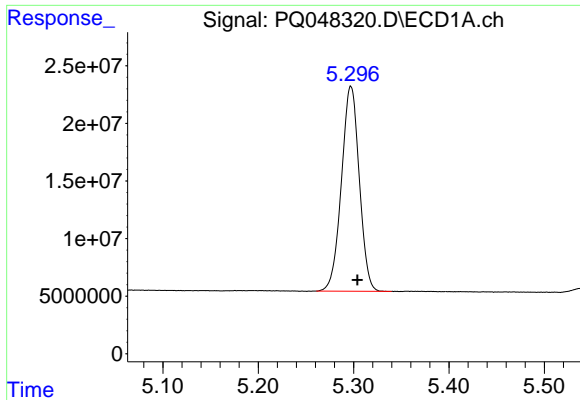
Data Path : Z:\pestpcbsrv\HPCHEM1\ECD\_Q\Data\PQ061020\  
 Data File : PQ048320.D  
 Signal(s) : Signal #1: ECD1A.ch Signal #2: ECD2B.ch  
 Acq On : 11 Jun 2020 08:38  
 Operator : AJ\MA  
 Sample : PB129423BSD  
 Misc :  
 ALS Vial : 65 Sample Multiplier: 1

Instrument :  
 ECD\_Q  
 ClientSampled :

Integration File signal 1: autoint1.e  
 Integration File signal 2: autoint2.e  
 Quant Time: Jun 11 12:02:17 2020  
 Quant Method : Z:\pestpcbsrv\HPCHEM1\ECD\_Q\Method\PQ060920.M  
 Quant Title : GC EXTRACTABLES  
 QLast Update : Wed Jun 10 03:52:33 2020  
 Response via : Initial Calibration  
 Integrator: ChemStation

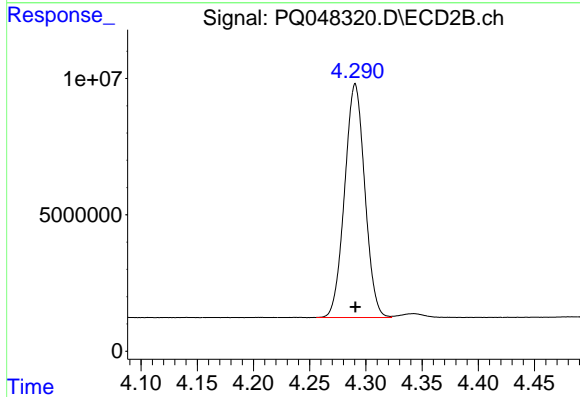
Volume Inj. : 2 µl  
 Signal #1 Phase : ZB-MR1 Signal #2 Phase: ZB-MR2  
 Signal #1 Info : 30Mx0.32mmx 0.50µ Signal #2 Info : 30M x 0.32mm x 0.25µm



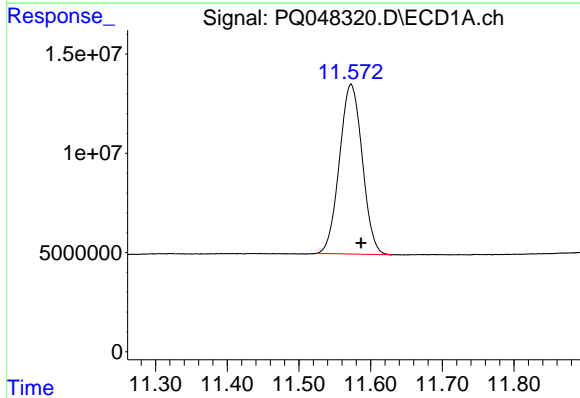


#1 Tetrachloro-m-xylene  
 R.T.: 5.297 min  
 Delta R.T.: -0.007 min  
 Response: 231344528  
 Conc: 27.07 ng/ml

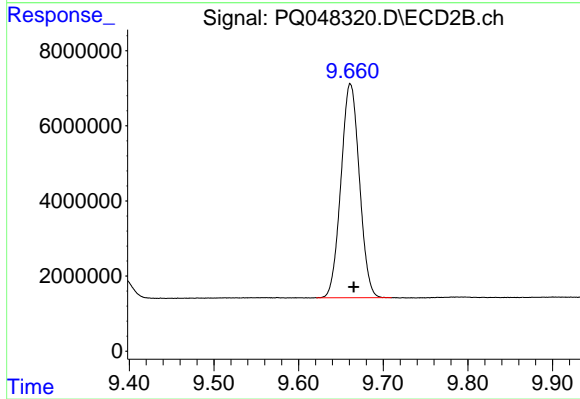
Instrument :  
 ECD\_Q  
 ClientSampleId :



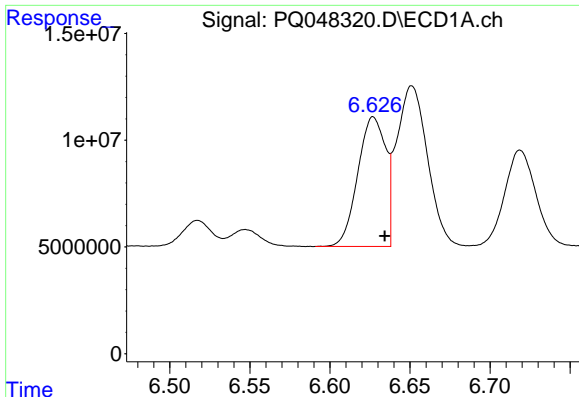
#1 Tetrachloro-m-xylene  
 R.T.: 4.291 min  
 Delta R.T.: 0.000 min  
 Response: 106947657  
 Conc: 25.89 ng/ml



#2 Decachlorobiphenyl  
 R.T.: 11.573 min  
 Delta R.T.: -0.014 min  
 Response: 189020660  
 Conc: 20.38 ng/ml



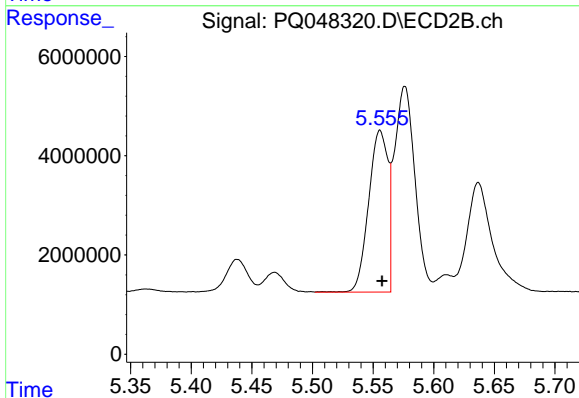
#2 Decachlorobiphenyl  
 R.T.: 9.661 min  
 Delta R.T.: -0.004 min  
 Response: 86234313  
 Conc: 19.27 ng/ml



#3 AR-1016-1

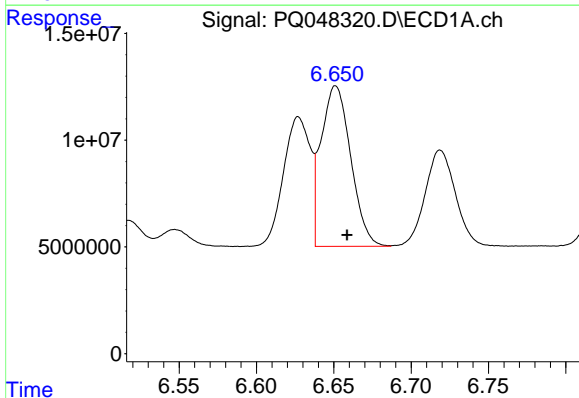
R.T.: 6.627 min  
 Delta R.T.: -0.007 min  
 Response: 73409764  
 Conc: 245.80 ng/ml

Instrument :  
 ECD\_Q  
 ClientSampled :



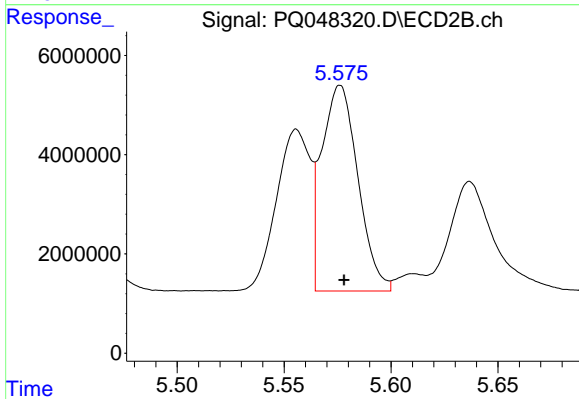
#3 AR-1016-1

R.T.: 5.556 min  
 Delta R.T.: -0.002 min  
 Response: 35968345  
 Conc: 231.22 ng/ml



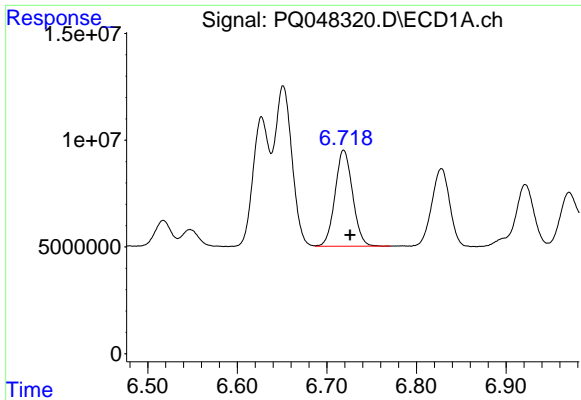
#4 AR-1016-2

R.T.: 6.651 min  
 Delta R.T.: -0.007 min  
 Response: 100457851  
 Conc: 245.98 ng/ml



#4 AR-1016-2

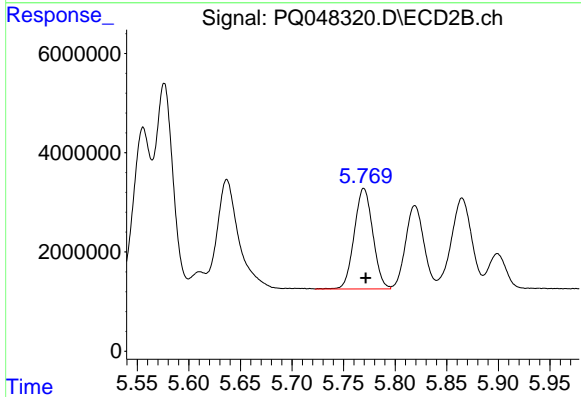
R.T.: 5.576 min  
 Delta R.T.: -0.002 min  
 Response: 48931702  
 Conc: 231.30 ng/ml



#5 AR-1016-3

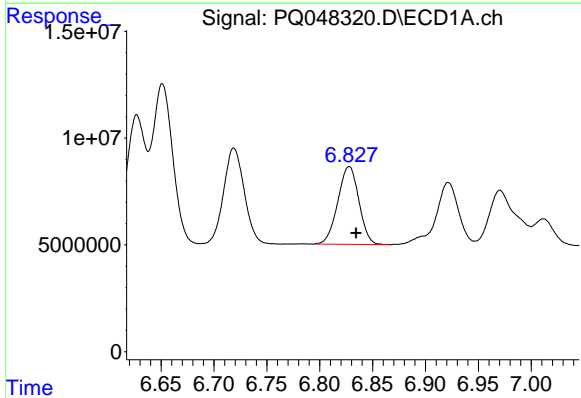
R.T.: 6.719 min  
 Delta R.T.: -0.007 min  
 Response: 61200793  
 Conc: 242.10 ng/ml

Instrument :  
 ECD\_Q  
 ClientSampleId :



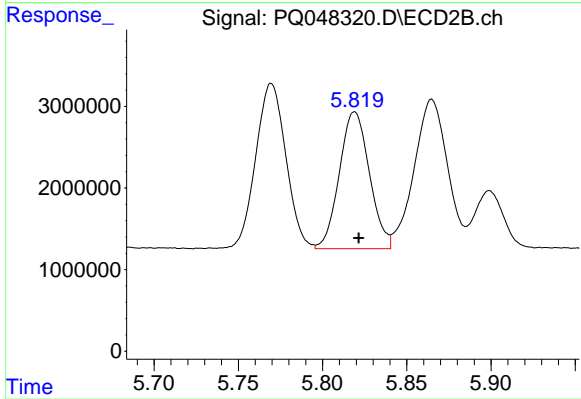
#5 AR-1016-3

R.T.: 5.770 min  
 Delta R.T.: -0.002 min  
 Response: 25370800  
 Conc: 233.58 ng/ml



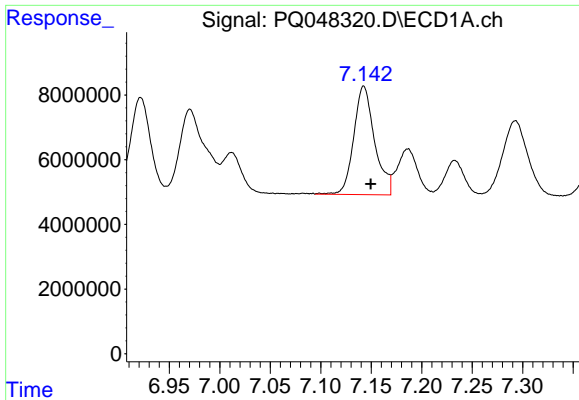
#6 AR-1016-4

R.T.: 6.828 min  
 Delta R.T.: -0.007 min  
 Response: 50594193  
 Conc: 245.29 ng/ml



#6 AR-1016-4

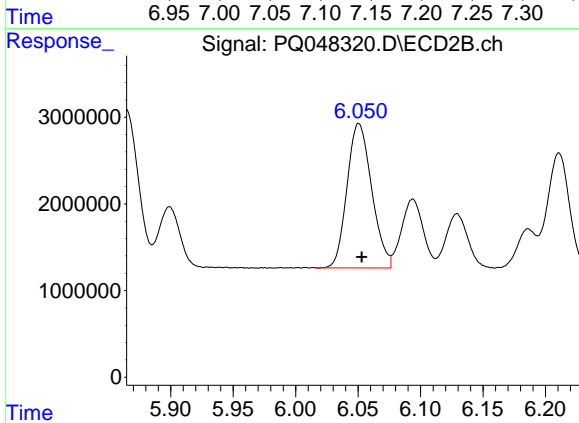
R.T.: 5.819 min  
 Delta R.T.: -0.002 min  
 Response: 20854953  
 Conc: 233.28 ng/ml



#7 AR-1016-5

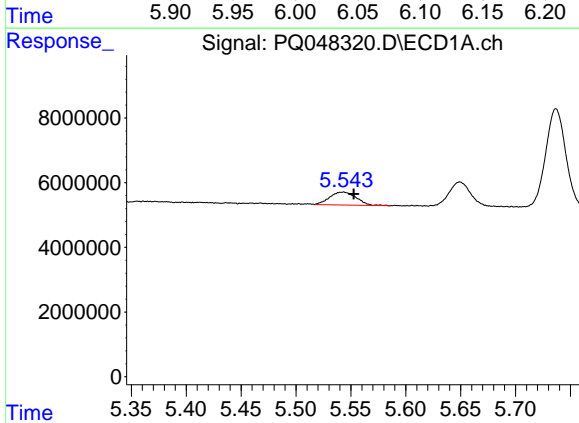
R.T.: 7.143 min  
 Delta R.T.: -0.007 min  
 Response: 48456314  
 Conc: 245.03 ng/ml

Instrument :  
 ECD\_Q  
 ClientSampled :



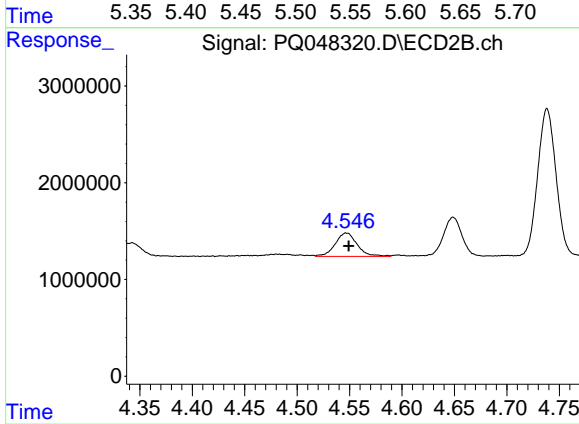
#7 AR-1016-5

R.T.: 6.051 min  
 Delta R.T.: -0.002 min  
 Response: 22910630  
 Conc: 234.48 ng/ml



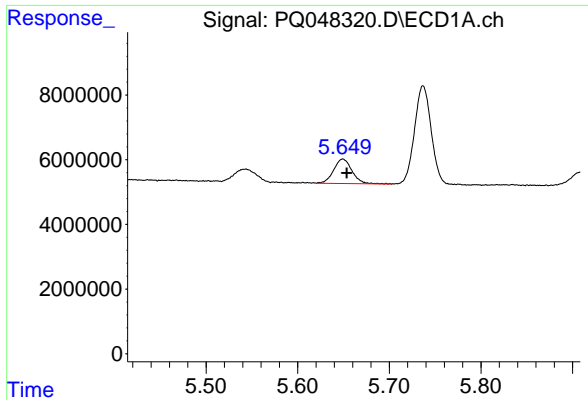
#8 AR-1221-1

R.T.: 5.543 min  
 Delta R.T.: -0.010 min  
 Response: 6734494  
 Conc: 75.39 ng/ml



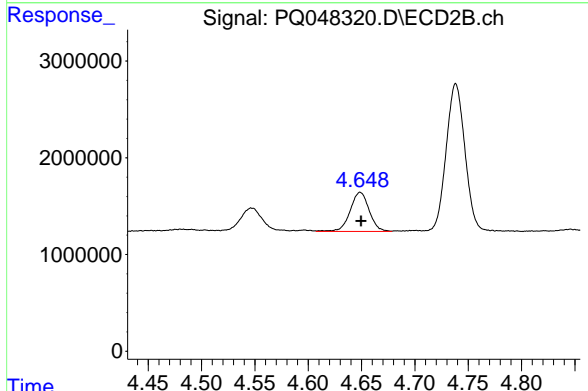
#8 AR-1221-1

R.T.: 4.547 min  
 Delta R.T.: -0.002 min  
 Response: 3558057  
 Conc: 82.56 ng/ml

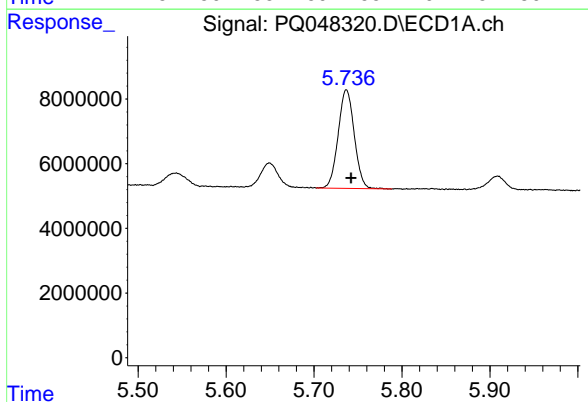


#9 AR-1221-2  
 R.T.: 5.649 min  
 Delta R.T.: -0.004 min  
 Response: 10484391  
 Conc: 153.78 ng/ml

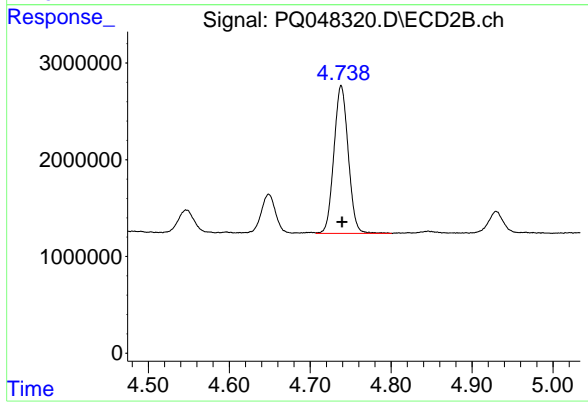
Instrument :  
 ECD\_Q  
 ClientSampled :



#9 AR-1221-2  
 R.T.: 4.649 min  
 Delta R.T.: 0.000 min  
 Response: 5032738  
 Conc: 154.35 ng/ml

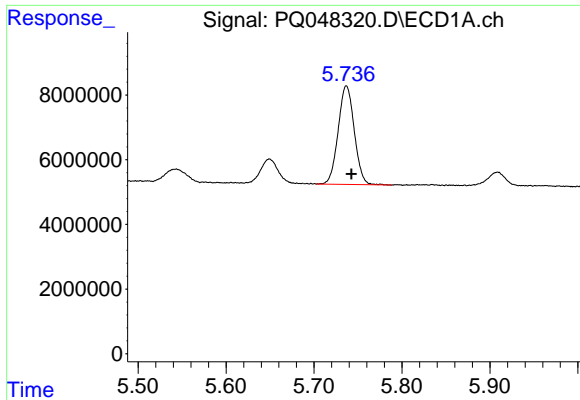


#10 AR-1221-3  
 R.T.: 5.737 min  
 Delta R.T.: -0.005 min  
 Response: 38798345  
 Conc: 184.61 ng/ml



#10 AR-1221-3  
 R.T.: 4.738 min  
 Delta R.T.: -0.001 min  
 Response: 18761769  
 Conc: 184.16 ng/ml

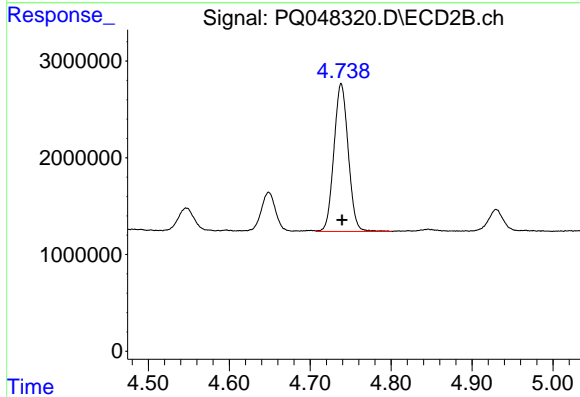




#11 AR-1232-1

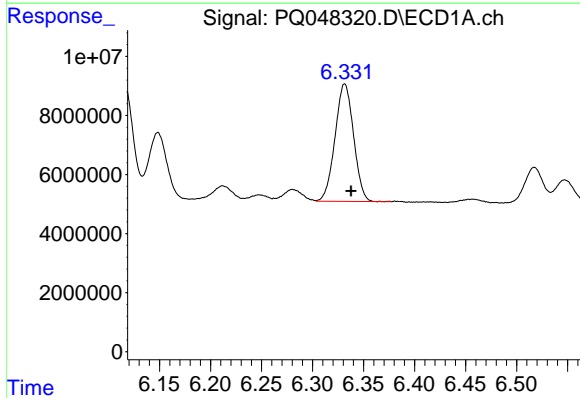
R.T.: 5.737 min  
 Delta R.T.: -0.006 min  
 Response: 38798345  
 Conc: 229.90 ng/ml

Instrument :  
 ECD\_Q  
 ClientSampled :



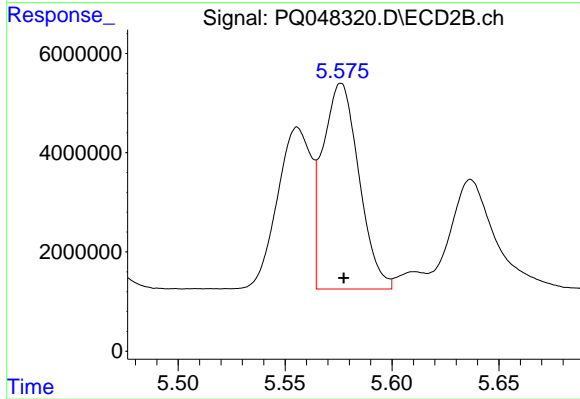
#11 AR-1232-1

R.T.: 4.738 min  
 Delta R.T.: 0.000 min  
 Response: 18761769  
 Conc: 229.91 ng/ml



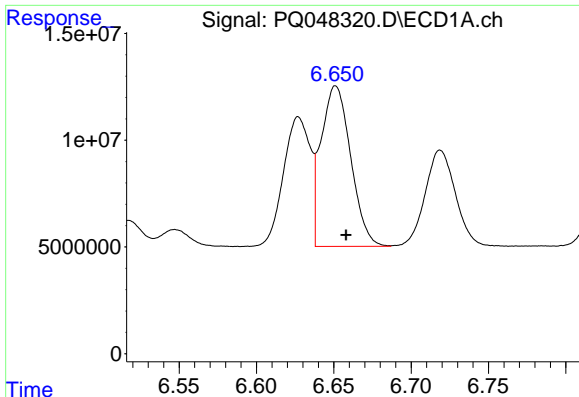
#12 AR-1232-2

R.T.: 6.332 min  
 Delta R.T.: -0.006 min  
 Response: 50338398  
 Conc: 587.60 ng/ml



#12 AR-1232-2

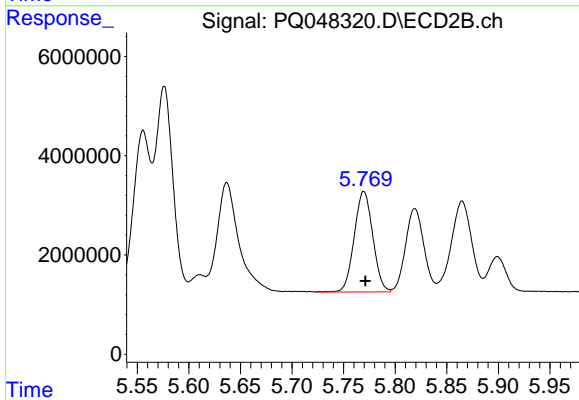
R.T.: 5.576 min  
 Delta R.T.: -0.001 min  
 Response: 48931702  
 Conc: 573.03 ng/ml



#13 AR-1232-3

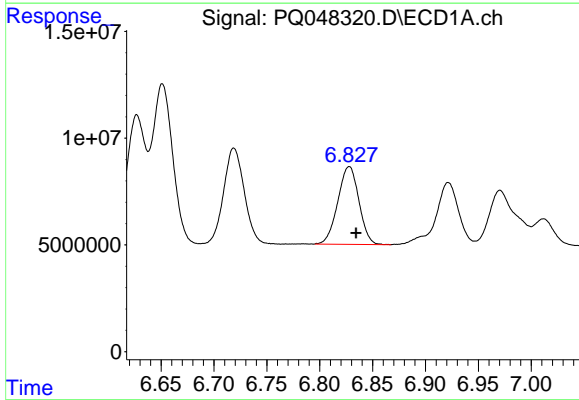
R.T.: 6.651 min  
 Delta R.T.: -0.007 min  
 Response: 100457851  
 Conc: 600.27 ng/ml

Instrument :  
 ECD\_Q  
 ClientSampled :



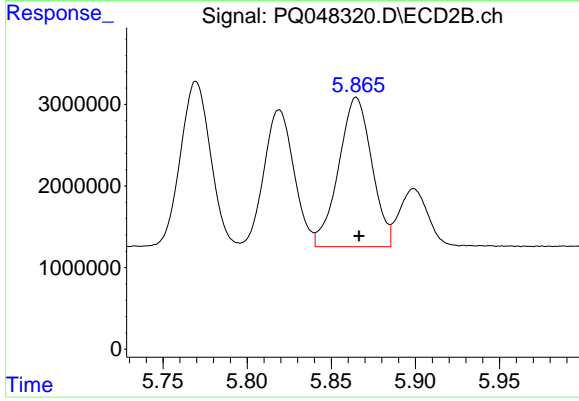
#13 AR-1232-3

R.T.: 5.770 min  
 Delta R.T.: -0.001 min  
 Response: 25370800  
 Conc: 588.29 ng/ml



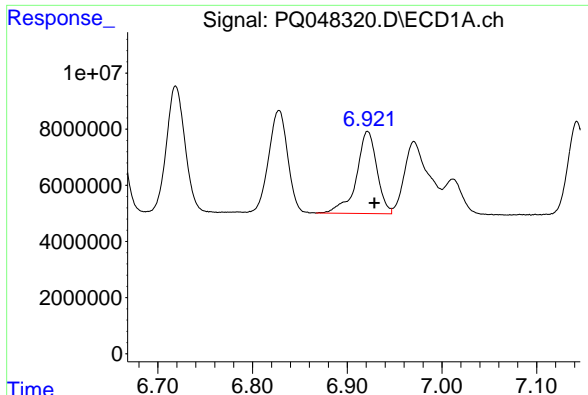
#14 AR-1232-4

R.T.: 6.828 min  
 Delta R.T.: -0.007 min  
 Response: 50594193  
 Conc: 596.30 ng/ml



#14 AR-1232-4

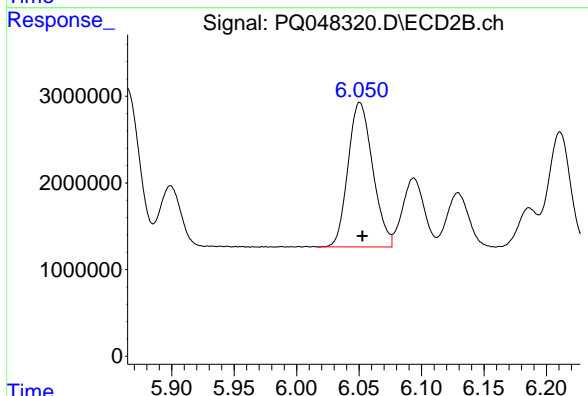
R.T.: 5.865 min  
 Delta R.T.: -0.002 min  
 Response: 25121148  
 Conc: 640.86 ng/ml



#15 AR-1232-5

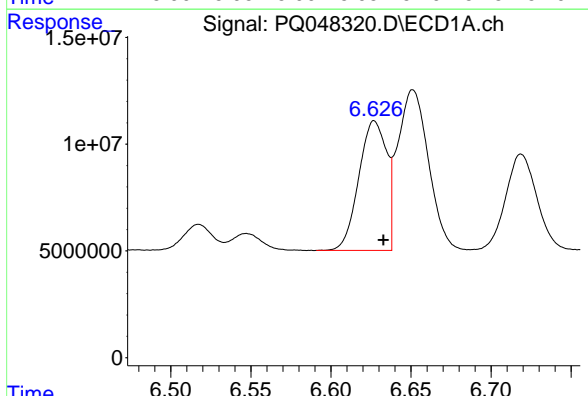
R.T.: 6.922 min  
 Delta R.T.: -0.007 min  
 Response: 44029708  
 Conc: 694.88 ng/ml

Instrument :  
 ECD\_Q  
 ClientSampleId :



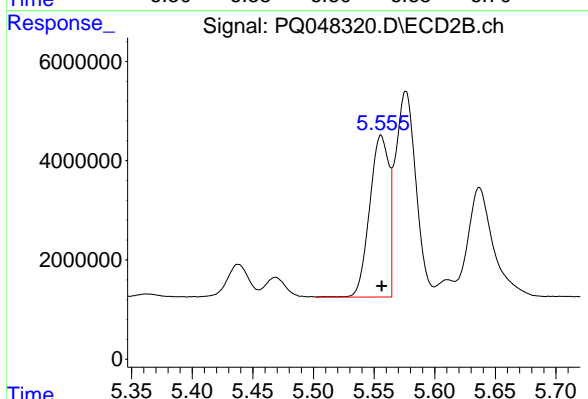
#15 AR-1232-5

R.T.: 6.051 min  
 Delta R.T.: -0.002 min  
 Response: 22910630  
 Conc: 587.37 ng/ml



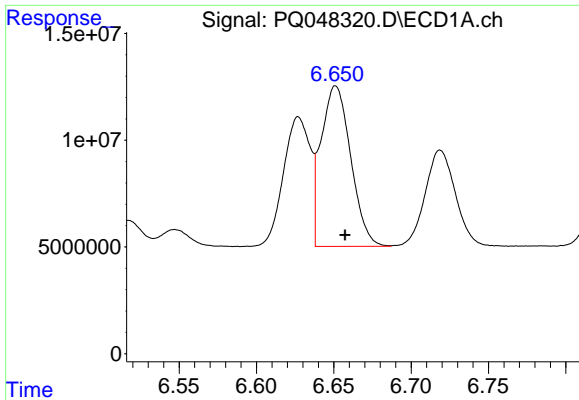
#16 AR-1242-1

R.T.: 6.627 min  
 Delta R.T.: -0.006 min  
 Response: 73409764  
 Conc: 324.27 ng/ml



#16 AR-1242-1

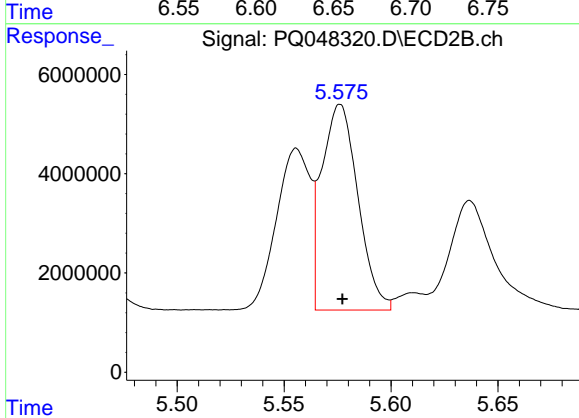
R.T.: 5.556 min  
 Delta R.T.: 0.000 min  
 Response: 35968345  
 Conc: 312.20 ng/ml



#17 AR-1242-2

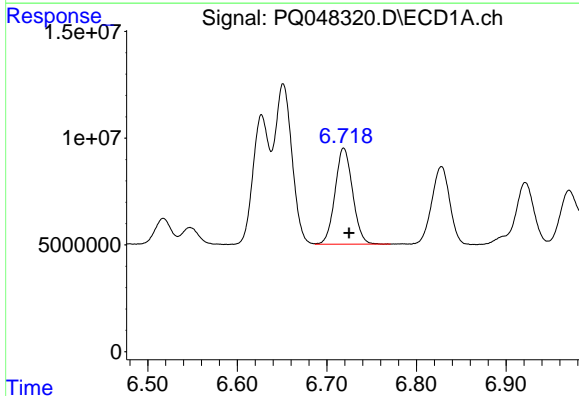
R.T.: 6.651 min  
 Delta R.T.: -0.006 min  
 Response: 100457851  
 Conc: 325.41 ng/ml

Instrument :  
 ECD\_Q  
 ClientSampled :



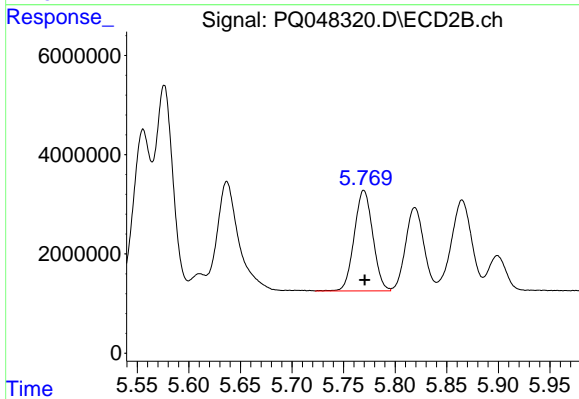
#17 AR-1242-2

R.T.: 5.576 min  
 Delta R.T.: -0.001 min  
 Response: 48931702  
 Conc: 310.50 ng/ml



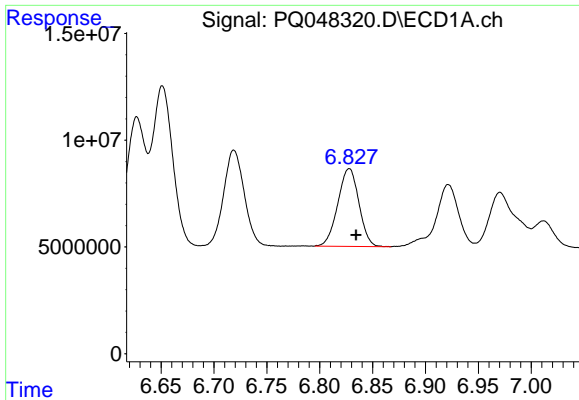
#18 AR-1242-3

R.T.: 6.719 min  
 Delta R.T.: -0.006 min  
 Response: 61200793  
 Conc: 319.53 ng/ml



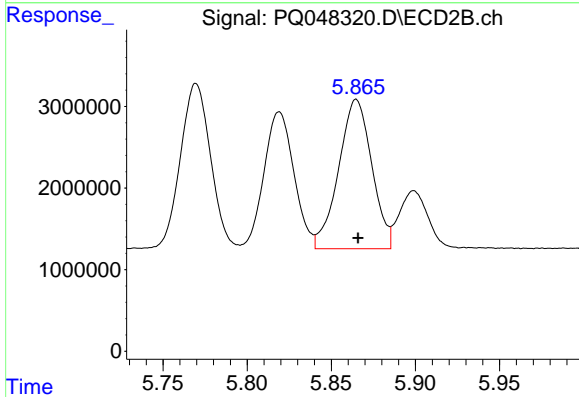
#18 AR-1242-3

R.T.: 5.770 min  
 Delta R.T.: -0.001 min  
 Response: 25370800  
 Conc: 309.20 ng/ml

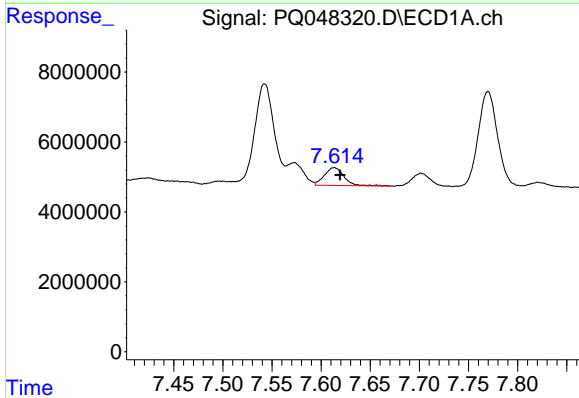


#19 AR-1242-4  
 R.T.: 6.828 min  
 Delta R.T.: -0.006 min  
 Response: 50594193  
 Conc: 319.09 ng/ml

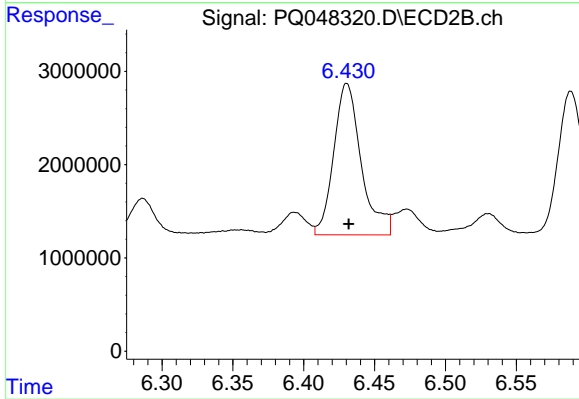
Instrument :  
 ECD\_Q  
 ClientSampleId :



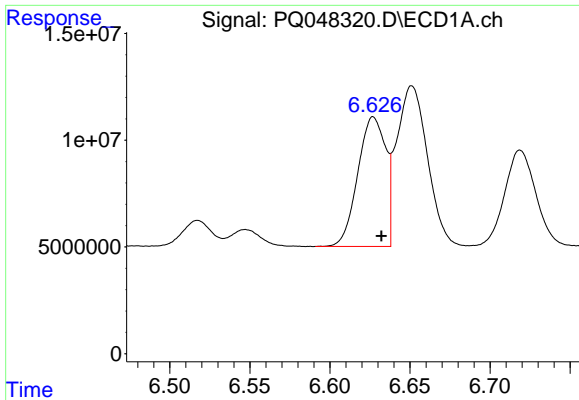
#19 AR-1242-4  
 R.T.: 5.865 min  
 Delta R.T.: -0.001 min  
 Response: 25121148  
 Conc: 310.77 ng/ml



#20 AR-1242-5  
 R.T.: 7.613 min  
 Delta R.T.: -0.006 min  
 Response: 7184086  
 Conc: 42.28 ng/ml

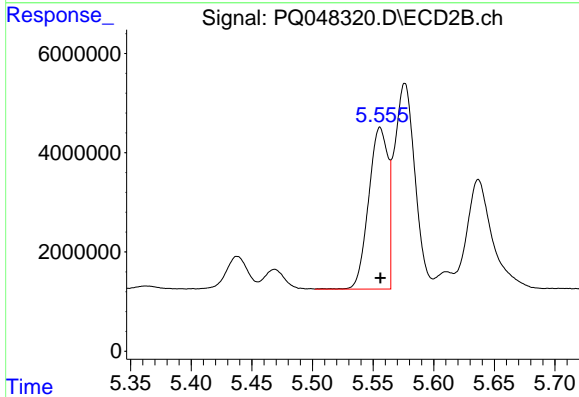


#20 AR-1242-5  
 R.T.: 6.430 min  
 Delta R.T.: -0.001 min  
 Response: 21949120  
 Conc: 205.11 ng/ml

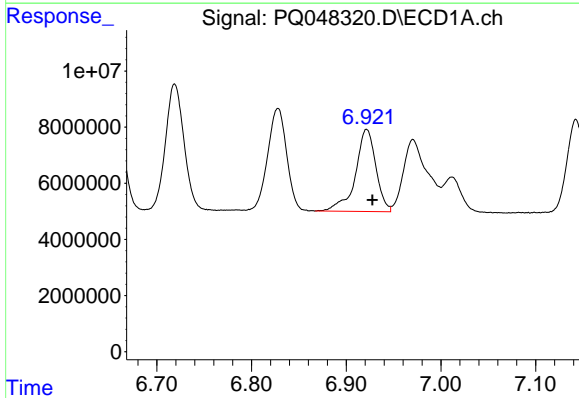


#21 AR-1248-1  
 R.T.: 6.627 min  
 Delta R.T.: -0.005 min  
 Response: 73409764  
 Conc: 422.98 ng/ml

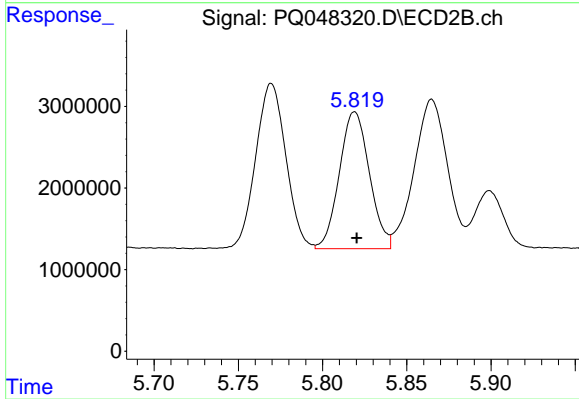
Instrument :  
 ECD\_Q  
 ClientSampled :



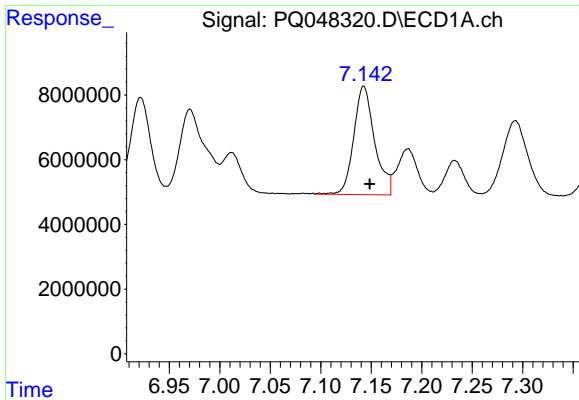
#21 AR-1248-1  
 R.T.: 5.556 min  
 Delta R.T.: 0.000 min  
 Response: 35968345  
 Conc: 407.18 ng/ml



#22 AR-1248-2  
 R.T.: 6.922 min  
 Delta R.T.: -0.006 min  
 Response: 44029708  
 Conc: 197.95 ng/ml



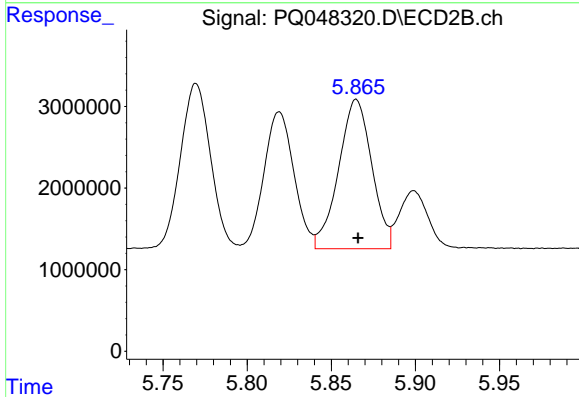
#22 AR-1248-2  
 R.T.: 5.819 min  
 Delta R.T.: -0.001 min  
 Response: 20854953  
 Conc: 185.89 ng/ml



#23 AR-1248-3

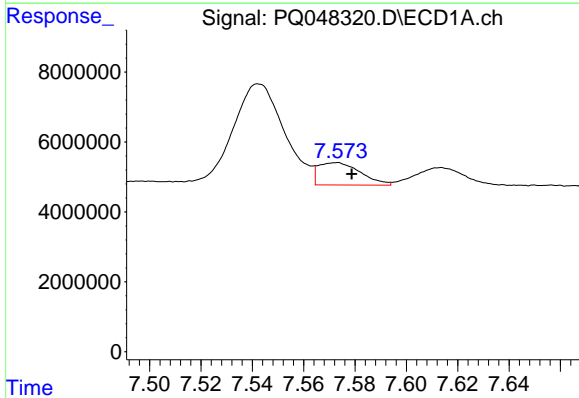
R.T.: 7.143 min  
 Delta R.T.: -0.006 min  
 Response: 48456314  
 Conc: 198.57 ng/ml

Instrument :  
 ECD\_Q  
 ClientSampled :



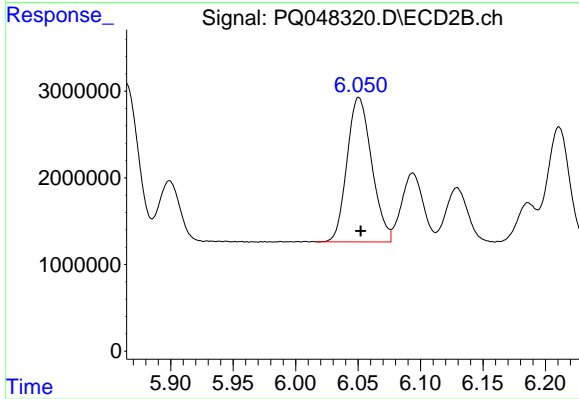
#23 AR-1248-3

R.T.: 5.865 min  
 Delta R.T.: -0.001 min  
 Response: 25121148  
 Conc: 220.78 ng/ml



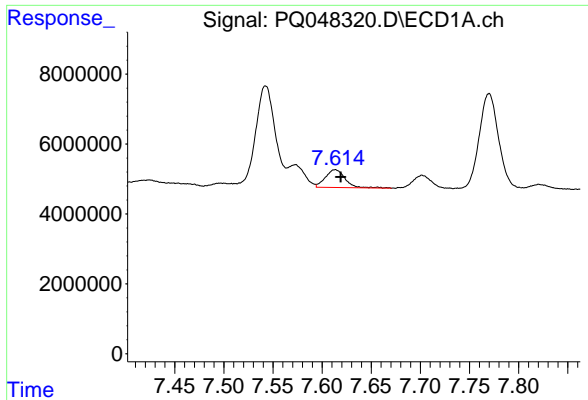
#24 AR-1248-4

R.T.: 7.573 min  
 Delta R.T.: -0.006 min  
 Response: 7334655  
 Conc: 26.52 ng/ml



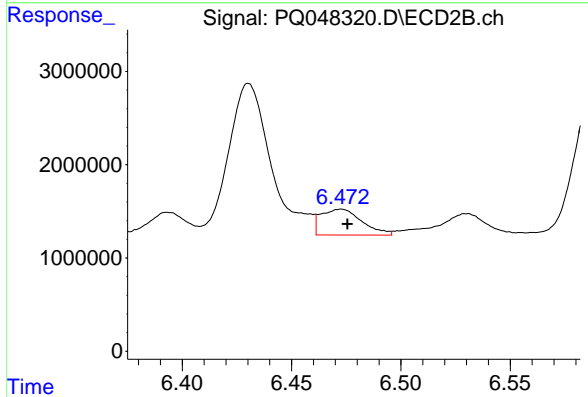
#24 AR-1248-4

R.T.: 6.051 min  
 Delta R.T.: -0.002 min  
 Response: 22910630  
 Conc: 168.89 ng/ml

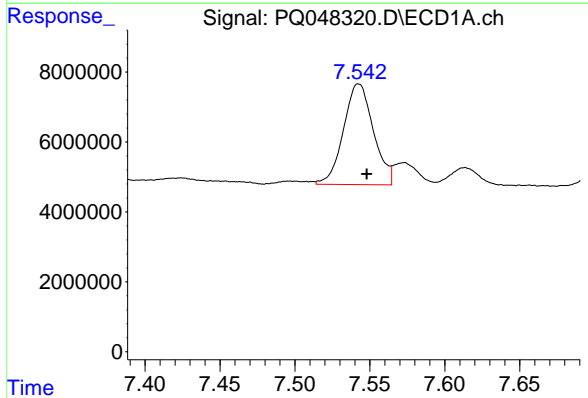


#25 AR-1248-5  
 R.T.: 7.613 min  
 Delta R.T.: -0.006 min  
 Response: 7184086  
 Conc: 27.33 ng/ml

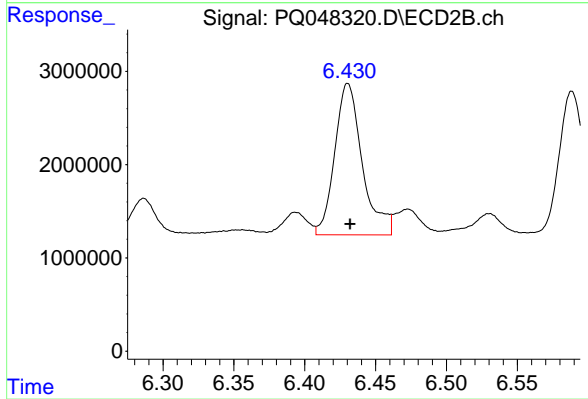
Instrument :  
 ECD\_Q  
 ClientSampleId :



#25 AR-1248-5  
 R.T.: 6.473 min  
 Delta R.T.: -0.003 min  
 Response: 3619971  
 Conc: 26.31 ng/ml

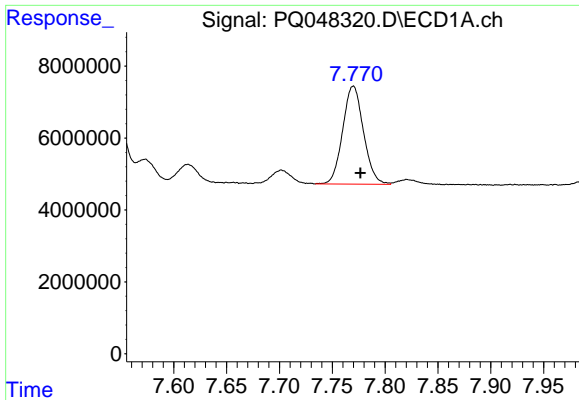


#26 AR-1254-1  
 R.T.: 7.543 min  
 Delta R.T.: -0.005 min  
 Response: 40083891  
 Conc: 133.81 ng/ml



#26 AR-1254-1  
 R.T.: 6.430 min  
 Delta R.T.: -0.002 min  
 Response: 21949120  
 Conc: 92.90 ng/ml

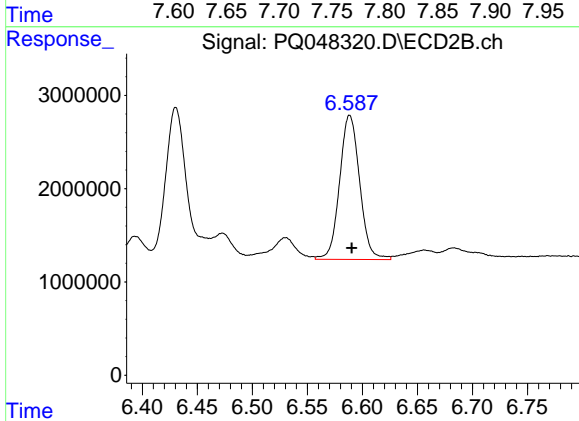




#27 AR-1254-2

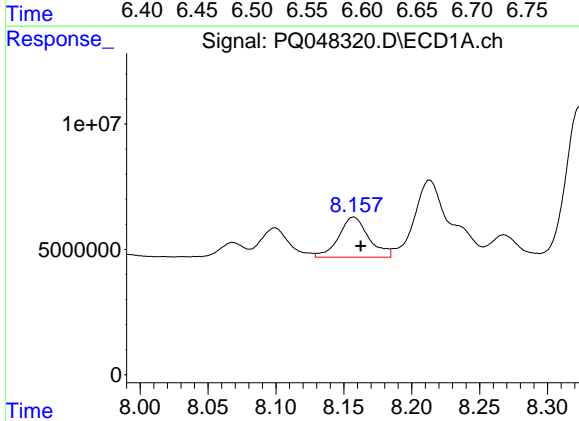
R.T.: 7.770 min  
 Delta R.T.: -0.007 min  
 Response: 37356407  
 Conc: 80.72 ng/ml

Instrument :  
 ECD\_Q  
 ClientSampleId :



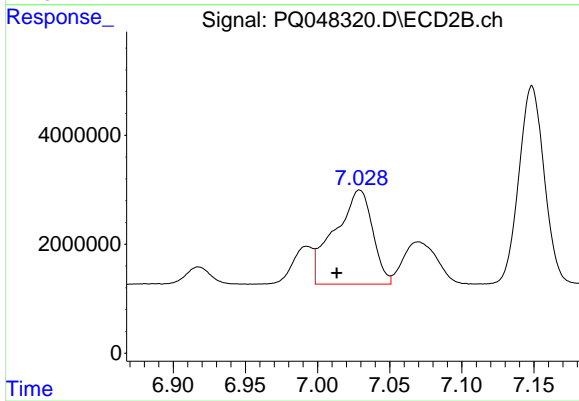
#27 AR-1254-2

R.T.: 6.588 min  
 Delta R.T.: -0.002 min  
 Response: 19620736  
 Conc: 95.67 ng/ml



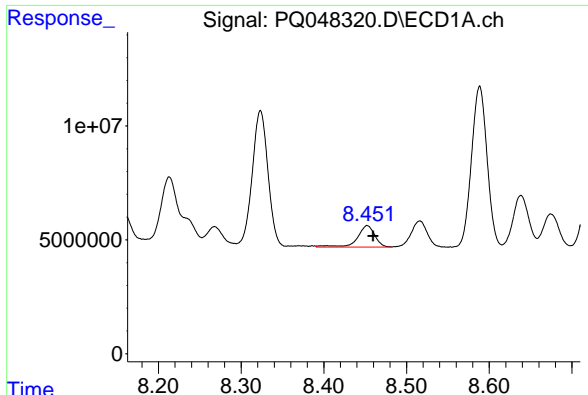
#28 AR-1254-3

R.T.: 8.157 min  
 Delta R.T.: -0.005 min  
 Response: 24672965  
 Conc: 50.62 ng/ml



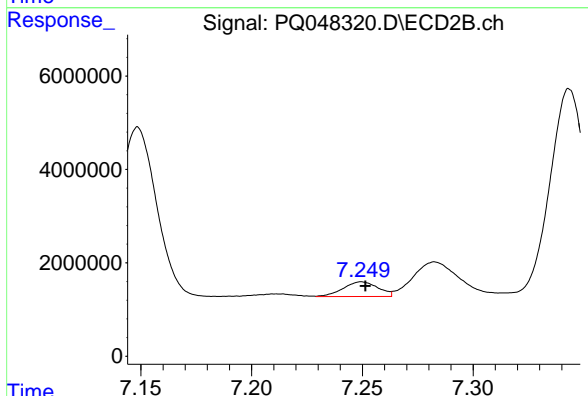
#28 AR-1254-3

R.T.: 7.029 min  
 Delta R.T.: 0.016 min  
 Response: 31531367  
 Conc: 93.95 ng/ml

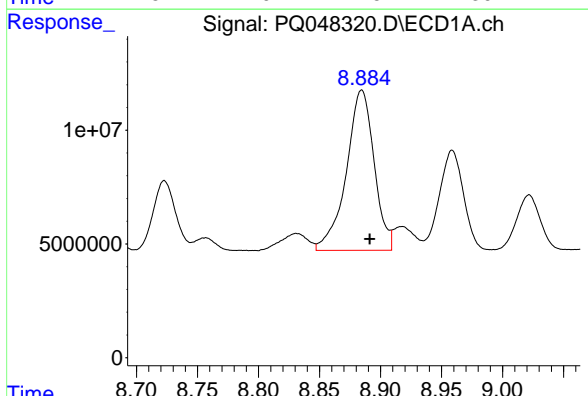


#29 AR-1254-4  
 R.T.: 8.453 min  
 Delta R.T.: -0.007 min  
 Response: 13838458  
 Conc: 36.55 ng/ml

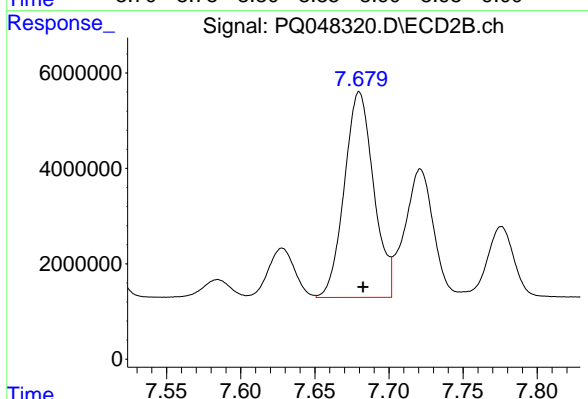
Instrument :  
 ECD\_Q  
 ClientSampled :



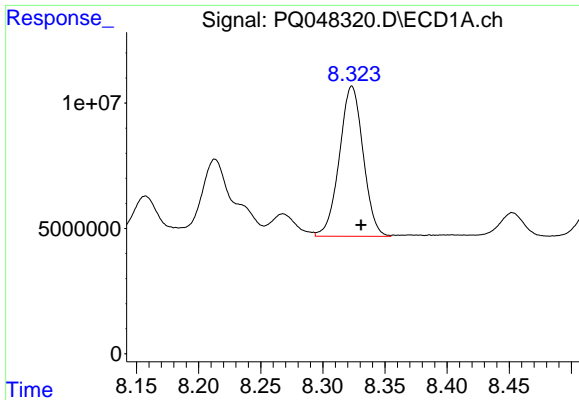
#29 AR-1254-4  
 R.T.: 7.250 min  
 Delta R.T.: -0.002 min  
 Response: 3448509  
 Conc: 15.70 ng/ml



#30 AR-1254-5  
 R.T.: 8.885 min  
 Delta R.T.: -0.007 min  
 Response: 111759384  
 Conc: 279.62 ng/ml



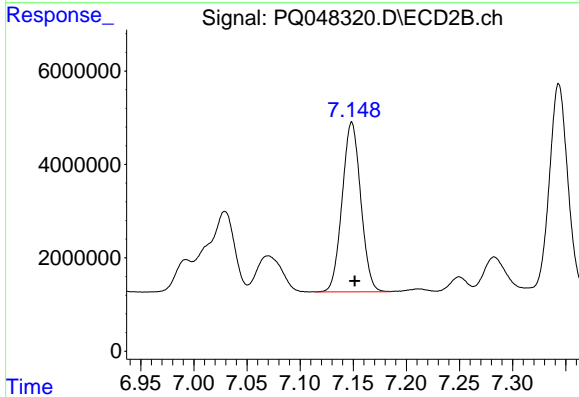
#30 AR-1254-5  
 R.T.: 7.680 min  
 Delta R.T.: -0.003 min  
 Response: 59363441  
 Conc: 203.21 ng/ml



#31 AR-1260-1

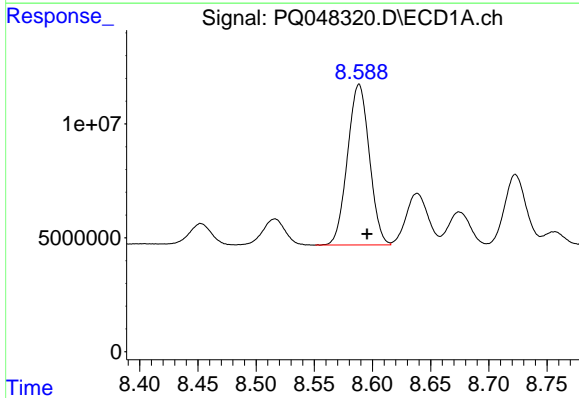
R.T.: 8.323 min  
Delta R.T.: -0.007 min  
Response: 79761805  
Conc: 237.87 ng/ml

Instrument :  
ECD\_Q  
ClientSampleId :



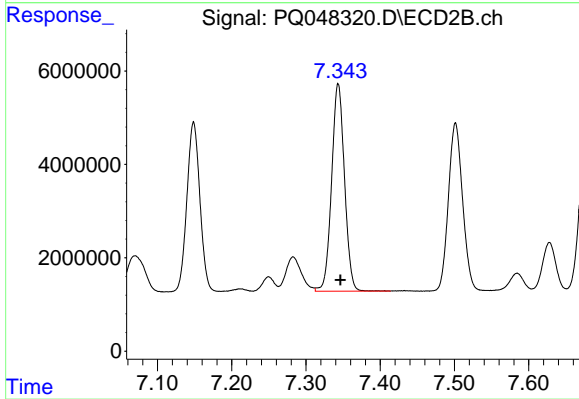
#31 AR-1260-1

R.T.: 7.149 min  
Delta R.T.: -0.003 min  
Response: 44227925  
Conc: 220.22 ng/ml



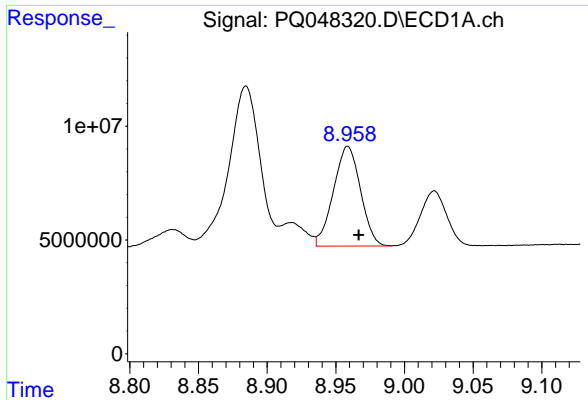
#32 AR-1260-2

R.T.: 8.588 min  
Delta R.T.: -0.007 min  
Response: 92287093  
Conc: 230.05 ng/ml



#32 AR-1260-2

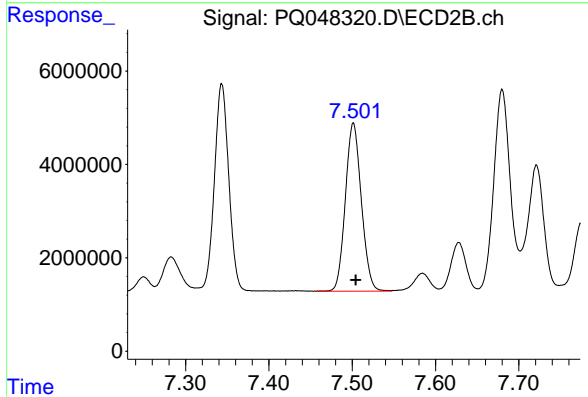
R.T.: 7.343 min  
Delta R.T.: -0.003 min  
Response: 53611248  
Conc: 216.46 ng/ml



#33 AR-1260-3

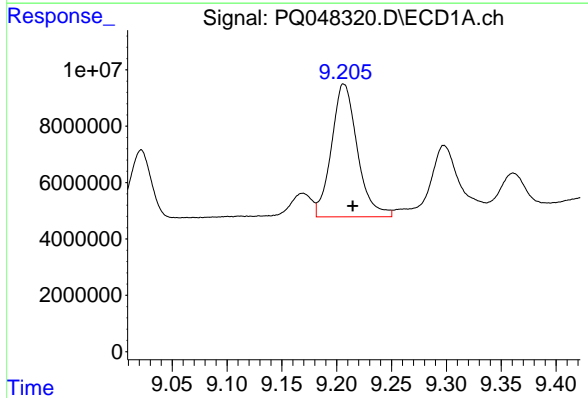
R.T.: 8.959 min  
 Delta R.T.: -0.008 min  
 Response: 60148077  
 Conc: 190.36 ng/ml

Instrument :  
 ECD\_Q  
 ClientSampleId :



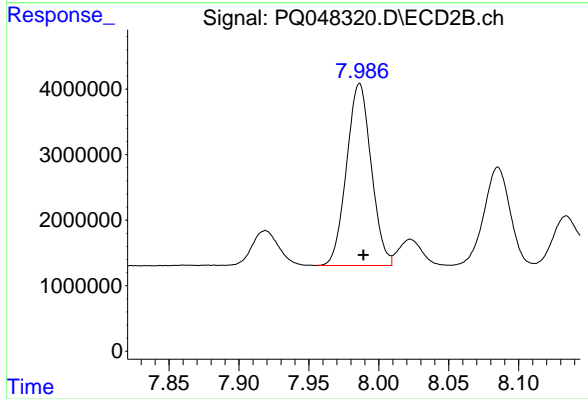
#33 AR-1260-3

R.T.: 7.501 min  
 Delta R.T.: -0.003 min  
 Response: 47942463  
 Conc: 212.63 ng/ml



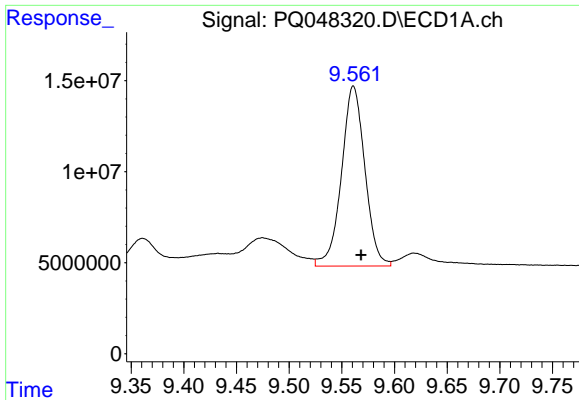
#34 AR-1260-4

R.T.: 9.206 min  
 Delta R.T.: -0.008 min  
 Response: 77406532  
 Conc: 209.75 ng/ml



#34 AR-1260-4

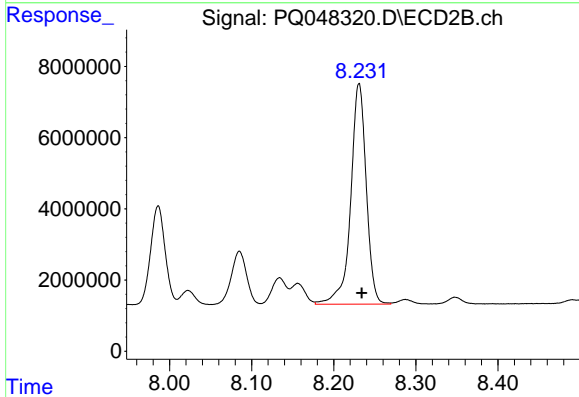
R.T.: 7.986 min  
 Delta R.T.: -0.003 min  
 Response: 34073139  
 Conc: 177.49 ng/ml



#35 AR-1260-5

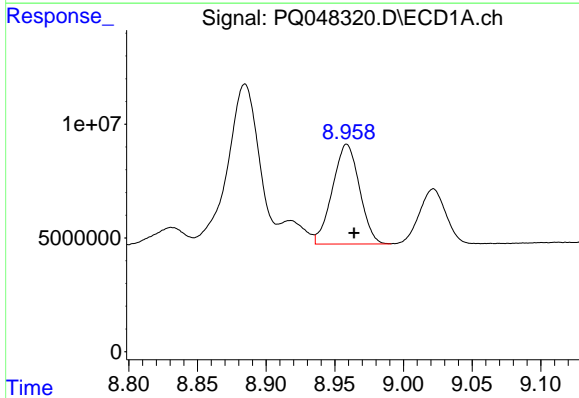
R.T.: 9.561 min  
 Delta R.T.: -0.007 min  
 Response: 152890355  
 Conc: 180.03 ng/ml

Instrument :  
 ECD\_Q  
 ClientSampled :



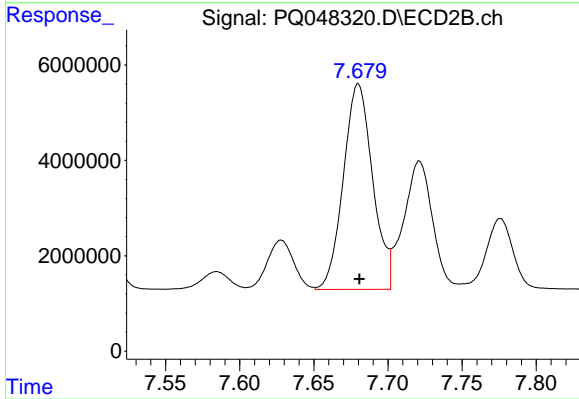
#35 AR-1260-5

R.T.: 8.231 min  
 Delta R.T.: -0.003 min  
 Response: 81663614  
 Conc: 170.85 ng/ml



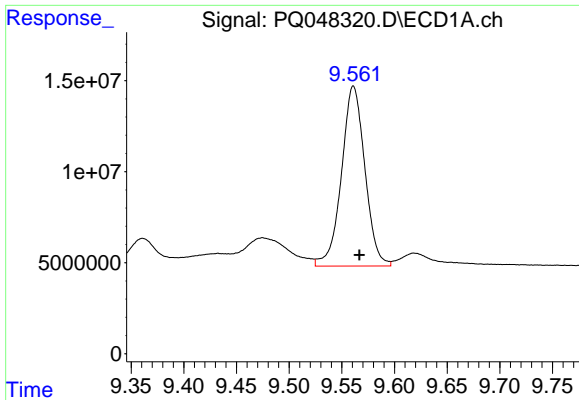
#36 AR-1262-1

R.T.: 8.959 min  
 Delta R.T.: -0.005 min  
 Response: 60148077  
 Conc: 138.64 ng/ml



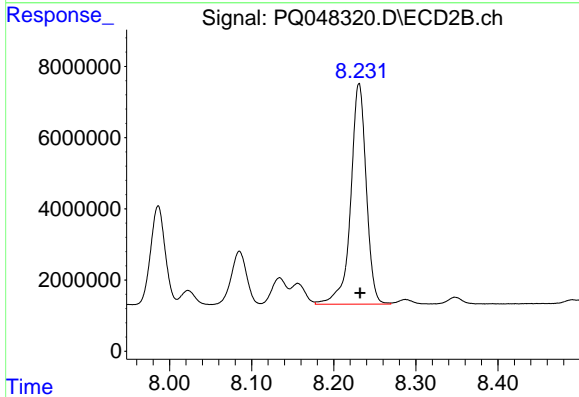
#36 AR-1262-1

R.T.: 7.680 min  
 Delta R.T.: 0.000 min  
 Response: 59363441  
 Conc: 419.48 ng/ml

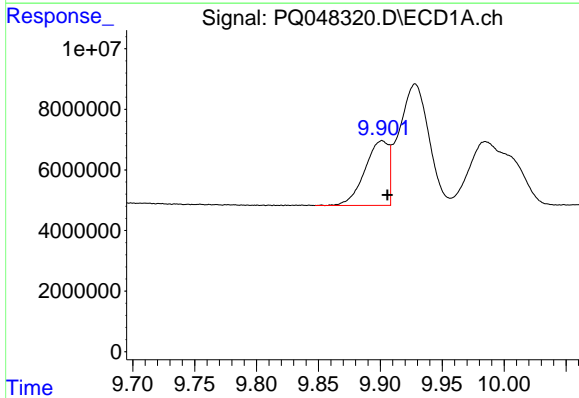


#37 AR-1262-2  
 R.T.: 9.561 min  
 Delta R.T.: -0.006 min  
 Response: 152890355  
 Conc: 184.30 ng/ml

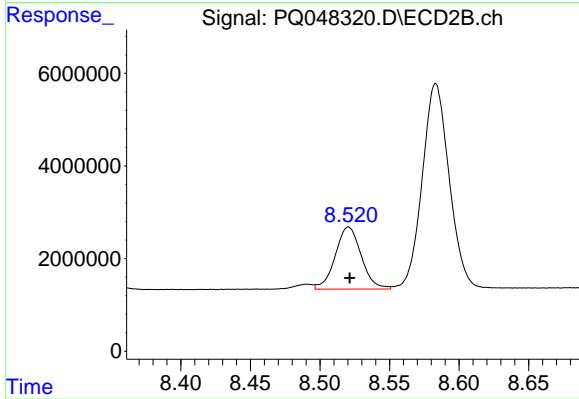
Instrument :  
 ECD\_Q  
 ClientSampled :



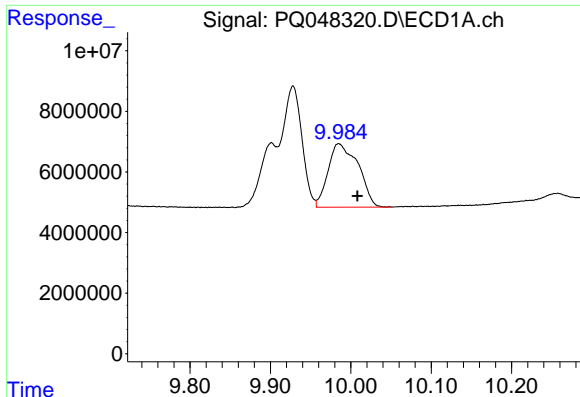
#37 AR-1262-2  
 R.T.: 8.231 min  
 Delta R.T.: -0.001 min  
 Response: 81663614  
 Conc: 154.91 ng/ml



#38 AR-1262-3  
 R.T.: 9.901 min  
 Delta R.T.: -0.004 min  
 Response: 28450096  
 Conc: 73.44 ng/ml



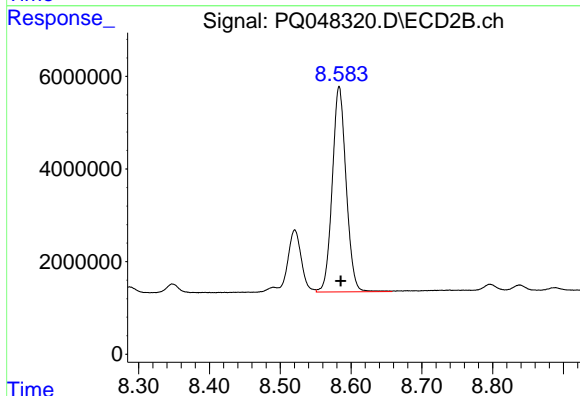
#38 AR-1262-3  
 R.T.: 8.521 min  
 Delta R.T.: 0.000 min  
 Response: 17471967  
 Conc: 81.24 ng/ml



#39 AR-1262-4

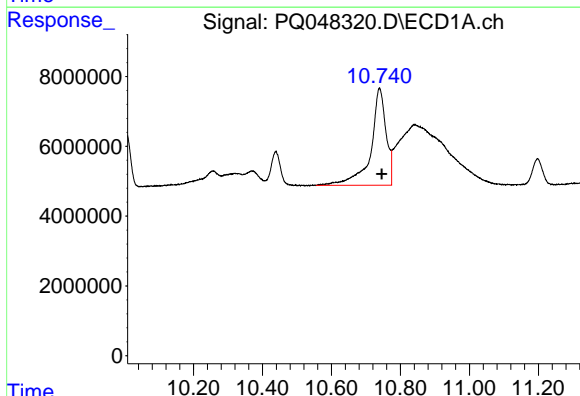
R.T.: 9.985 min  
 Delta R.T.: -0.024 min  
 Response: 54514231  
 Conc: 120.26 ng/ml

Instrument :  
 ECD\_Q  
 ClientSampled :



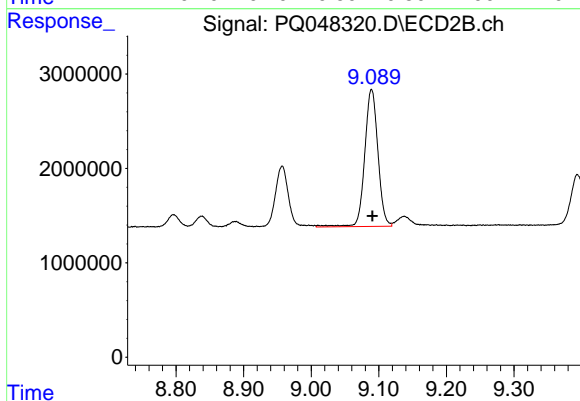
#39 AR-1262-4

R.T.: 8.583 min  
 Delta R.T.: -0.002 min  
 Response: 60303185  
 Conc: 156.67 ng/ml



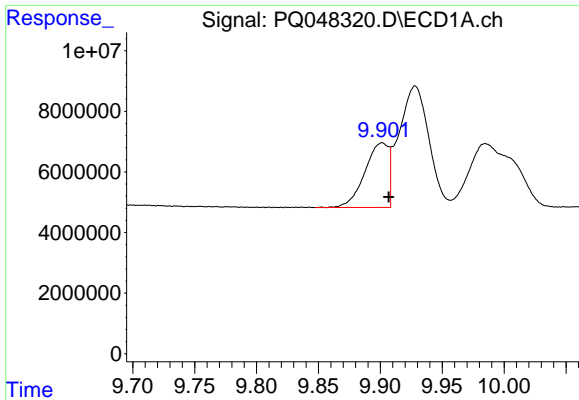
#40 AR-1262-5

R.T.: 10.739 min  
 Delta R.T.: -0.007 min  
 Response: 85811169  
 Conc: 254.26 ng/ml



#40 AR-1262-5

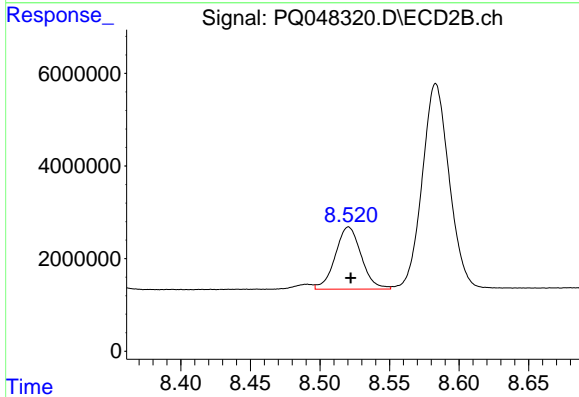
R.T.: 9.089 min  
 Delta R.T.: -0.001 min  
 Response: 19707721  
 Conc: 107.30 ng/ml



#41 AR-1268-1

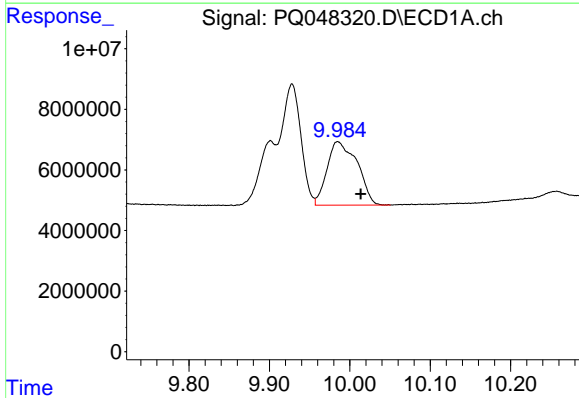
R.T.: 9.901 min  
 Delta R.T.: -0.005 min  
 Response: 28450096  
 Conc: 25.08 ng/ml

Instrument :  
 ECD\_Q  
 ClientSampled :



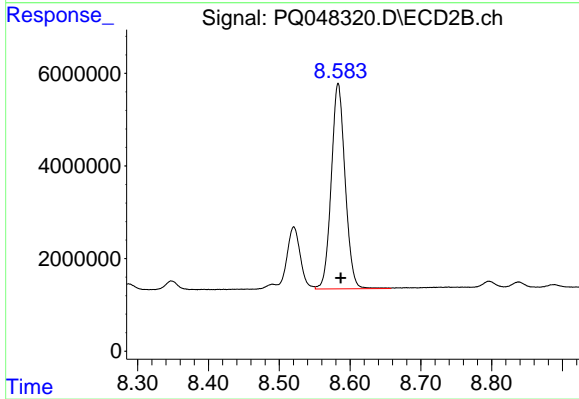
#41 AR-1268-1

R.T.: 8.521 min  
 Delta R.T.: -0.002 min  
 Response: 17471967  
 Conc: 25.46 ng/ml



#42 AR-1268-2

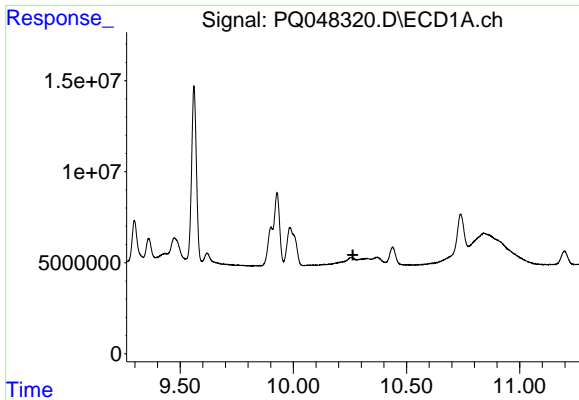
R.T.: 9.985 min  
 Delta R.T.: -0.029 min  
 Response: 54514231  
 Conc: 49.92 ng/ml



#42 AR-1268-2

R.T.: 8.583 min  
 Delta R.T.: -0.004 min  
 Response: 60303185  
 Conc: 94.91 ng/ml

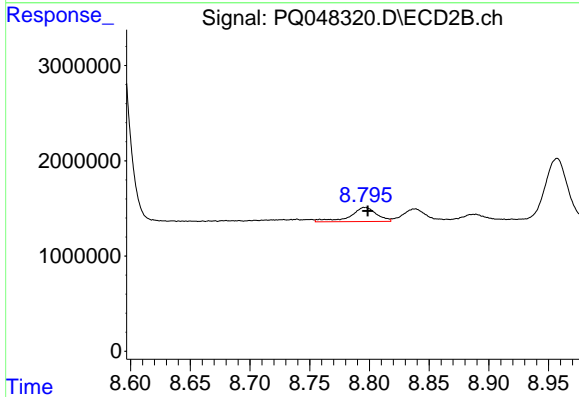




#43 AR-1268-3

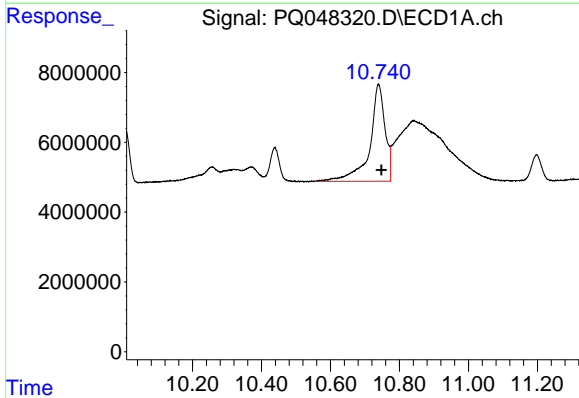
R.T.: 0.000 min  
 Exp R.T.: 10.263 min  
 Response: 0  
 Conc: N.D.

Instrument :  
 ECD\_Q  
 ClientSampleId :



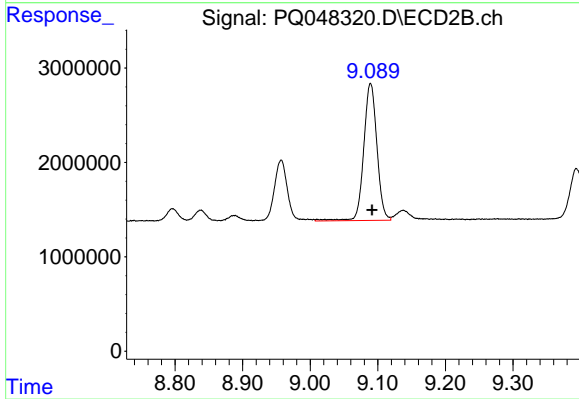
#43 AR-1268-3

R.T.: 8.796 min  
 Delta R.T.: -0.002 min  
 Response: 2259737  
 Conc: 4.27 ng/ml



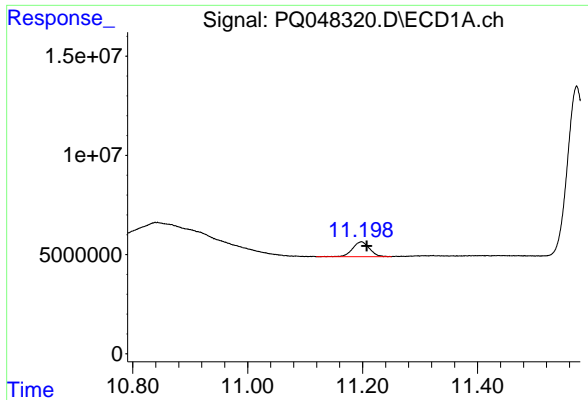
#44 AR-1268-4

R.T.: 10.739 min  
 Delta R.T.: -0.009 min  
 Response: 85811169  
 Conc: 203.29 ng/ml



#44 AR-1268-4

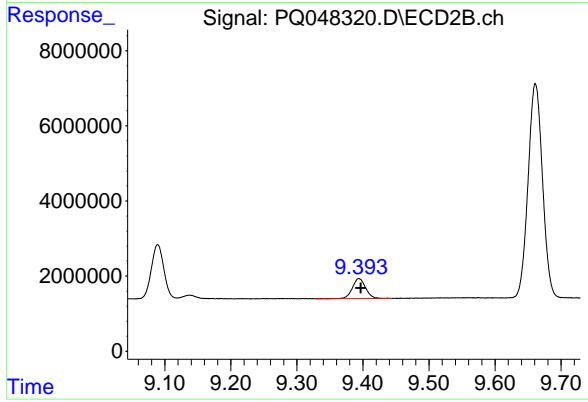
R.T.: 9.089 min  
 Delta R.T.: -0.002 min  
 Response: 19707721  
 Conc: 84.59 ng/ml



#45 AR-1268-5

R.T.: 11.198 min  
Delta R.T.: -0.009 min  
Response: 15361099  
Conc: 4.83 ng/ml

Instrument :  
ECD\_Q  
ClientSampleId :



#45 AR-1268-5

R.T.: 9.394 min  
Delta R.T.: -0.003 min  
Response: 7485814  
Conc: 4.28 ng/ml