

Data Path : Z:\pestpcbsrv\HPCHEM1\ECD_Q\Data\PQ061020\
 Data File : PQ048251.D
 Signal(s) : Signal #1: ECD1A.ch Signal #2: ECD2B.ch
 Acq On : 10 Jun 2020 09:30
 Operator : AJ\MA
 Sample : L2961-03
 Misc :
 ALS Vial : 10 Sample Multiplier: 1

Instrument :
 ECD_Q
 ClientSampleId :
 FM-CON-3

Integration File signal 1: autoint1.e
 Integration File signal 2: autoint2.e
 Quant Time: Jun 10 12:19:45 2020
 Quant Method : Z:\pestpcbsrv\HPCHEM1\ECD_Q\Method\PQ060920.M
 Quant Title : GC EXTRACTABLES
 QLast Update : Wed Jun 10 03:52:33 2020
 Response via : Initial Calibration
 Integrator: ChemStation

Volume Inj. : 2 µl
 Signal #1 Phase : ZB-MR1 Signal #2 Phase: ZB-MR2
 Signal #1 Info : 30Mx0.32mmx 0.50µ Signal #2 Info : 30M x 0.32mm x 0.25µm

Compound	RT#1	RT#2	Resp#1	Resp#2	ng/ml	ng/ml

System Monitoring Compounds						
1) SA Tetrachlo...	5.300	4.291	168.4E6	77734833	19.708	18.820
2) SA Decachlor...	11.580	9.664	179.0E6	83012088	19.300	18.547

Target Compounds

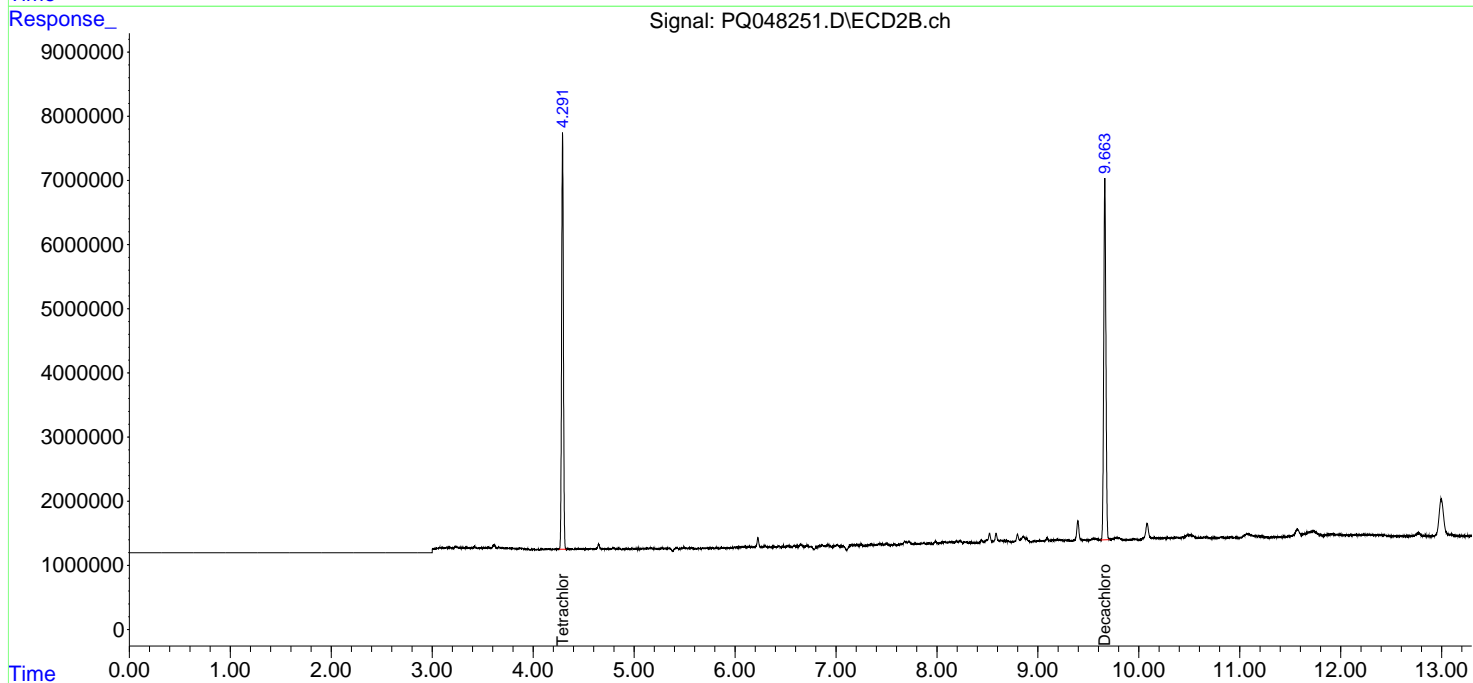
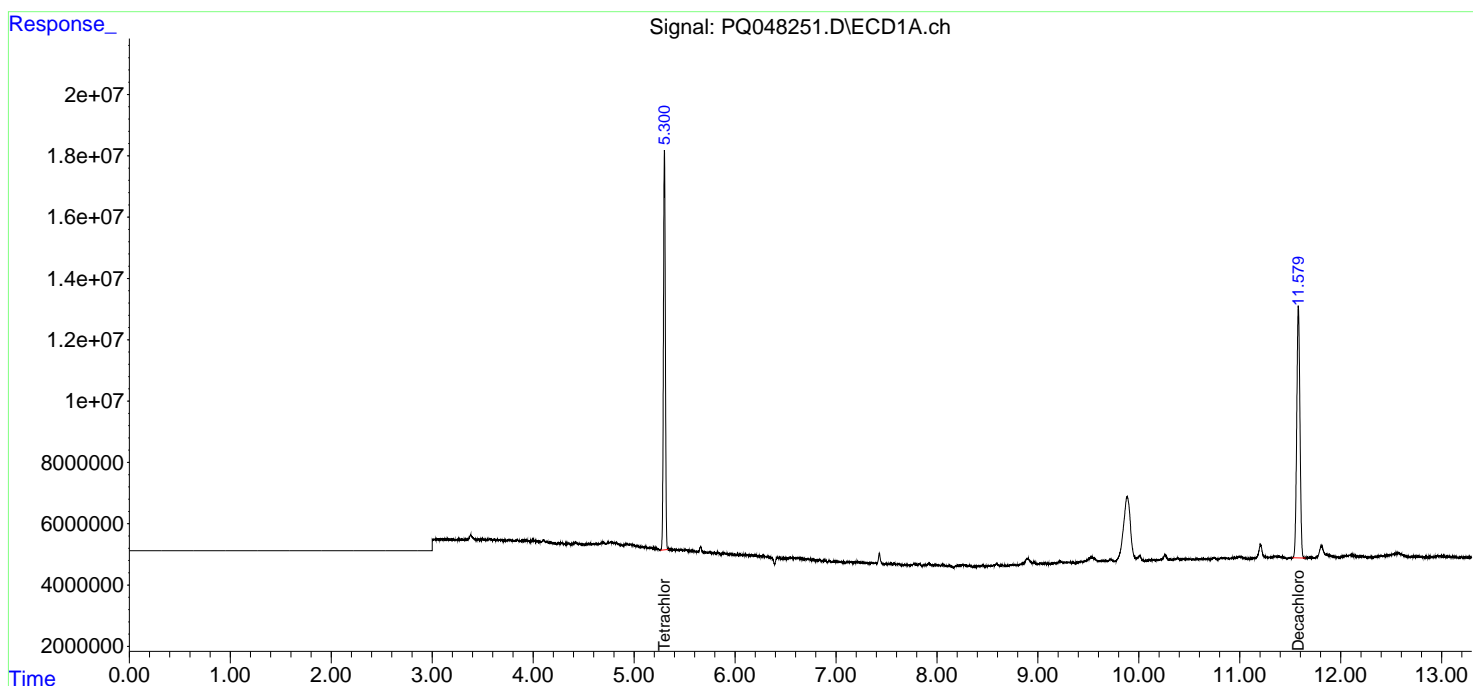
(f)=RT Delta > 1/2 Window (#)=Amounts differ by > 25% (m)=manual int.

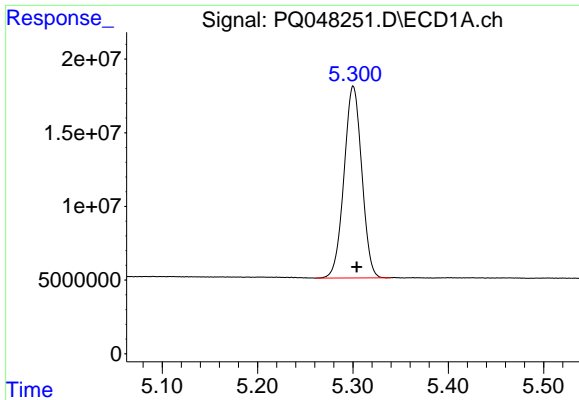
Data Path : Z:\pestpcbsrv\HPCHEM1\ECD_Q\Data\PQ061020\
 Data File : PQ048251.D
 Signal(s) : Signal #1: ECD1A.ch Signal #2: ECD2B.ch
 Acq On : 10 Jun 2020 09:30
 Operator : AJ\MA
 Sample : L2961-03
 Misc :
 ALS Vial : 10 Sample Multiplier: 1

Instrument :
 ECD_Q
 ClientSampleId :
 FM-CON-3

Integration File signal 1: autoint1.e
 Integration File signal 2: autoint2.e
 Quant Time: Jun 10 12:19:45 2020
 Quant Method : Z:\pestpcbsrv\HPCHEM1\ECD_Q\Method\PQ060920.M
 Quant Title : GC EXTRACTABLES
 QLast Update : Wed Jun 10 03:52:33 2020
 Response via : Initial Calibration
 Integrator: ChemStation

Volume Inj. : 2 µl
 Signal #1 Phase : ZB-MR1 Signal #2 Phase: ZB-MR2
 Signal #1 Info : 30Mx0.32mmx 0.50µ Signal #2 Info : 30M x 0.32mm x 0.25µm

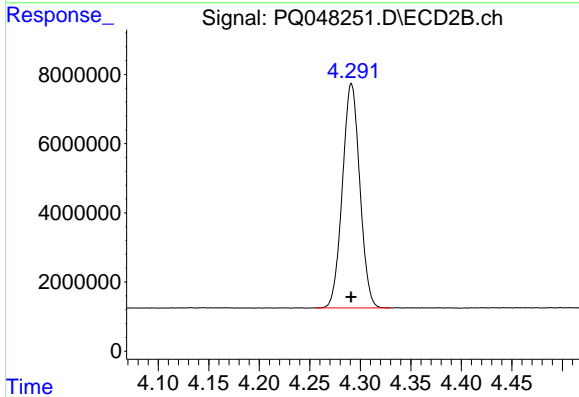




#1 Tetrachloro-m-xylene

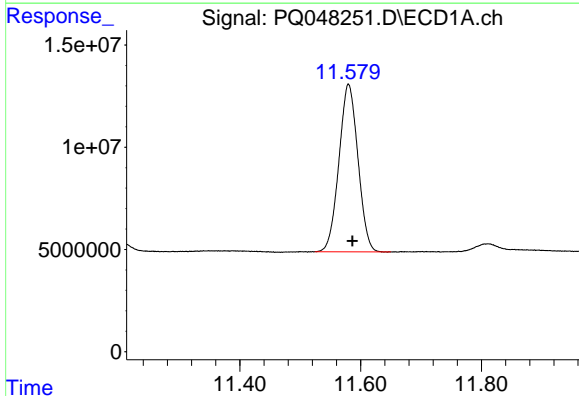
R.T.: 5.300 min
 Delta R.T.: -0.004 min
 Response: 168409528
 Conc: 19.71 ng/ml

Instrument :
 ECD_Q
 ClientSampleId :
 FM-CON-3



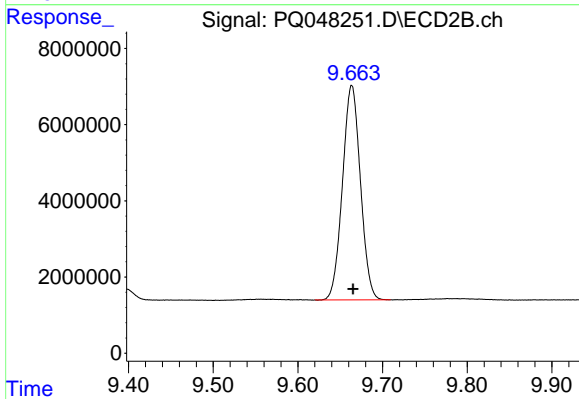
#1 Tetrachloro-m-xylene

R.T.: 4.291 min
 Delta R.T.: 0.000 min
 Response: 77734833
 Conc: 18.82 ng/ml



#2 Decachlorobiphenyl

R.T.: 11.580 min
 Delta R.T.: -0.006 min
 Response: 178964648
 Conc: 19.30 ng/ml



#2 Decachlorobiphenyl

R.T.: 9.664 min
 Delta R.T.: -0.002 min
 Response: 83012088
 Conc: 18.55 ng/ml