

Data Path : Z:\pestpcbsrv\HPCHEM1\ECD\_Q\Data\PQ061320\  
 Data File : PQ048423.D  
 Signal(s) : Signal #1: ECD1A.ch Signal #2: ECD2B.ch  
 Acq On : 12 Jun 2020 22:56  
 Operator : AJ\MA  
 Sample : L2976-04  
 Misc :  
 ALS Vial : 33 Sample Multiplier: 1

Instrument :  
 ECD\_Q  
 ClientSampleId :  
 04-A-04-B-04-C

Integration File signal 1: autoint1.e  
 Integration File signal 2: autoint2.e  
 Quant Time: Jun 13 01:51:50 2020  
 Quant Method : Z:\pestpcbsrv\HPCHEM1\ECD\_Q\Method\PQ061320.M  
 Quant Title : GC EXTRACTABLES  
 QLast Update : Fri Jun 12 16:33:31 2020  
 Response via : Initial Calibration  
 Integrator: ChemStation

Volume Inj. : 2 µl  
 Signal #1 Phase : ZB-MR1 Signal #2 Phase: ZB-MR2  
 Signal #1 Info : 30Mx0.32mmx 0.50µ Signal #2 Info : 30M x 0.32mm x 0.25µm

Compound	RT#1	RT#2	Resp#1	Resp#2	ng/ml	ng/ml
-----						
System Monitoring Compounds						
1) SA Tetrachlo...	5.295	4.292	243.5E6	77324201	37.231	25.509 #

Target Compounds

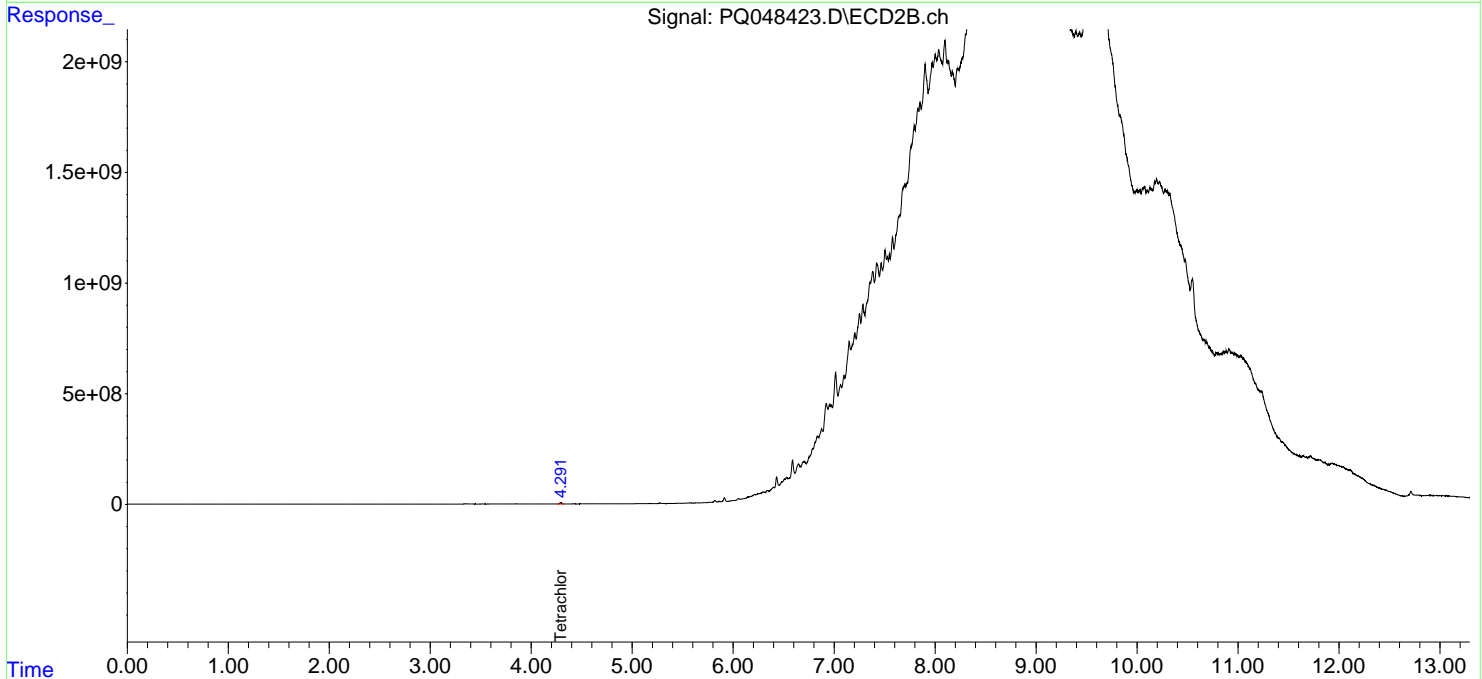
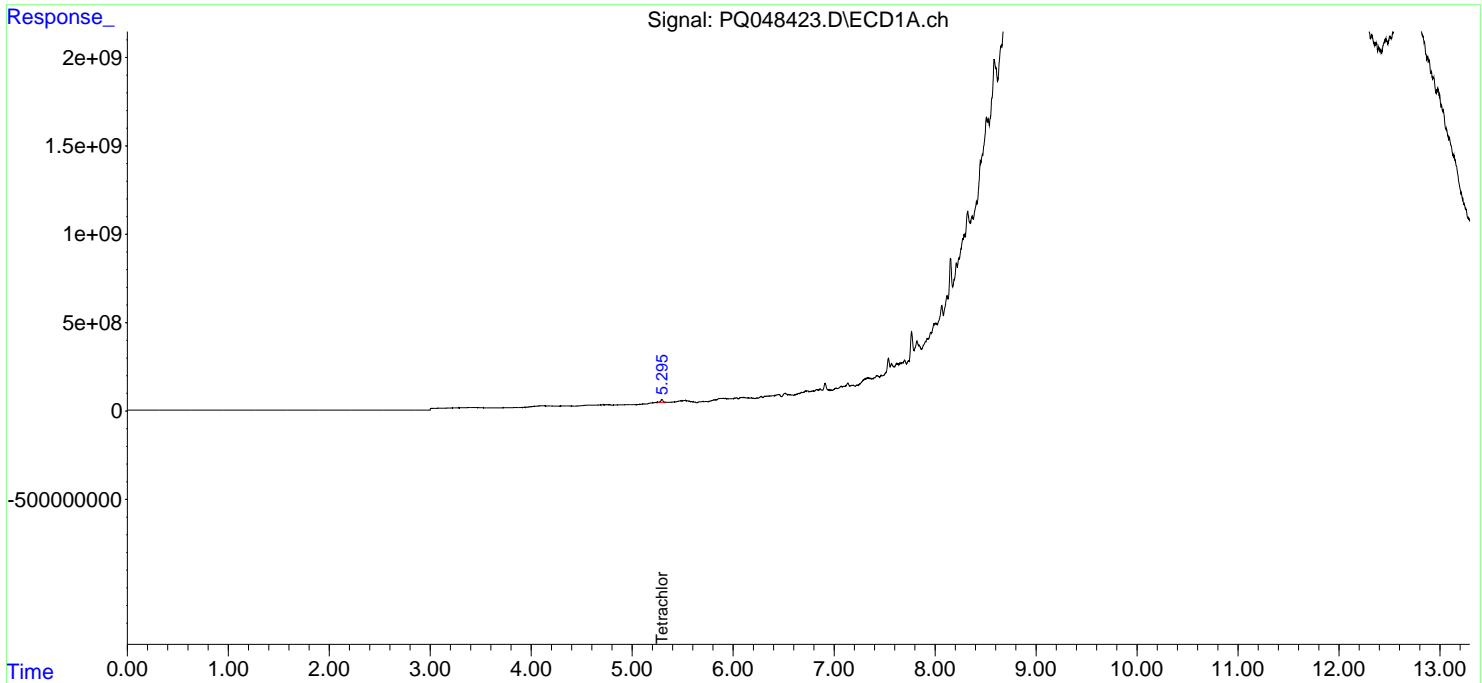
(f)=RT Delta > 1/2 Window (#)=Amounts differ by > 25% (m)=manual int.

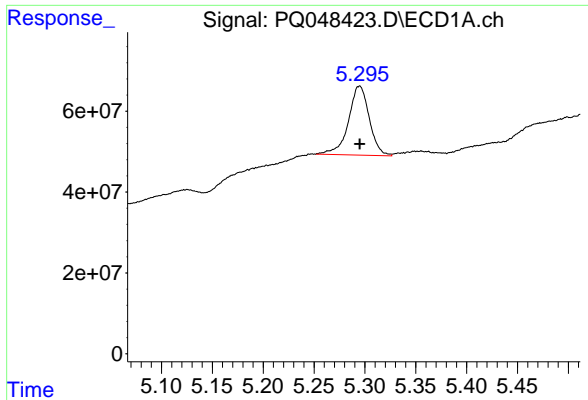
Data Path : Z:\pestpcbsrv\HPCHEM1\ECD\_Q\Data\PQ061320\  
 Data File : PQ048423.D  
 Signal(s) : Signal #1: ECD1A.ch Signal #2: ECD2B.ch  
 Acq On : 12 Jun 2020 22:56  
 Operator : AJ\MA  
 Sample : L2976-04  
 Misc :  
 ALS Vial : 33 Sample Multiplier: 1

Instrument :  
 ECD\_Q  
 ClientSampleId :  
 04-A-04-B-04-C

Integration File signal 1: autoint1.e  
 Integration File signal 2: autoint2.e  
 Quant Time: Jun 13 01:51:50 2020  
 Quant Method : Z:\pestpcbsrv\HPCHEM1\ECD\_Q\Method\PQ061320.M  
 Quant Title : GC EXTRACTABLES  
 QLast Update : Fri Jun 12 16:33:31 2020  
 Response via : Initial Calibration  
 Integrator: ChemStation

Volume Inj. : 2 µl  
 Signal #1 Phase : ZB-MR1 Signal #2 Phase: ZB-MR2  
 Signal #1 Info : 30Mx0.32mmx 0.50µ Signal #2 Info : 30M x 0.32mm x 0.25µm

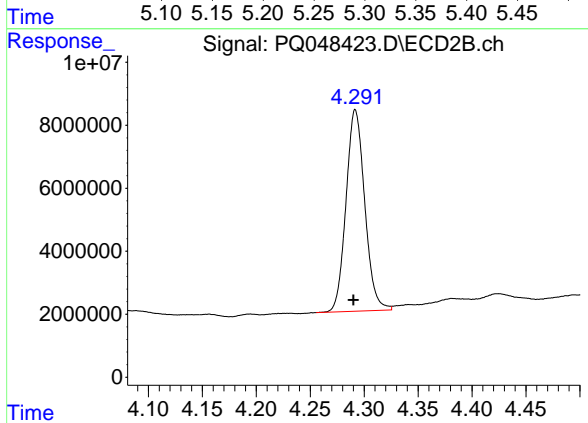




#1 Tetrachloro-m-xylene

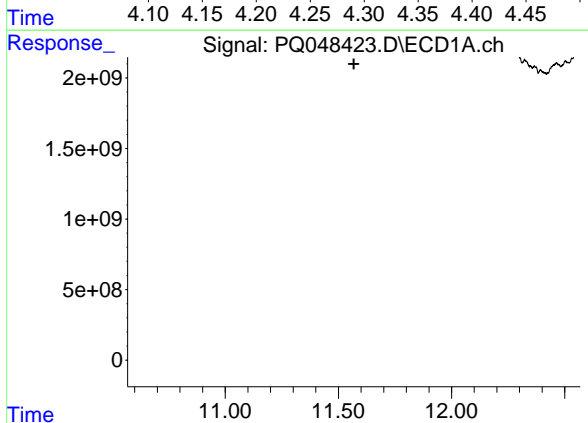
R.T.: 5.295 min  
 Delta R.T.: 0.000 min  
 Response: 243546789  
 Conc: 37.23 ng/ml

Instrument :  
 ECD\_Q  
 ClientSampleId :  
 04-A-04-B-04-C



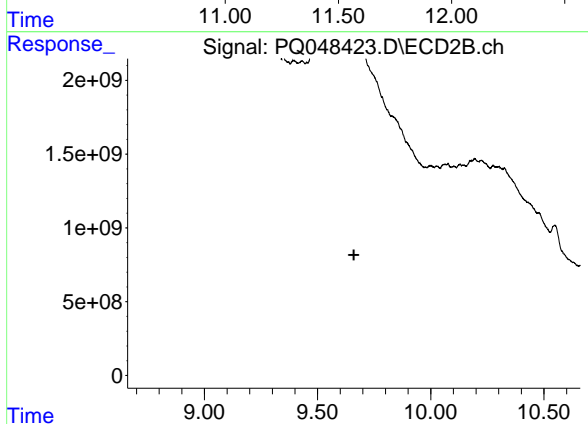
#1 Tetrachloro-m-xylene

R.T.: 4.292 min  
 Delta R.T.: 0.002 min  
 Response: 77324201  
 Conc: 25.51 ng/ml



#2 Decachlorobiphenyl

R.T.: 0.000 min  
 Exp R.T. : 11.569 min  
 Response: 0  
 Conc: N.D.



#2 Decachlorobiphenyl

R.T.: 0.000 min  
 Exp R.T. : 9.660 min  
 Response: 0  
 Conc: N.D.