

Data Path : Z:\pestpcbsrv\HPCHEM1\ECD\_Q\Data\PQ071619\  
 Data File : PQ041223.D  
 Signal(s) : Signal #1: ECD1A.ch Signal #2: ECD2B.ch  
 Acq On : 16 Jul 2019 11:32  
 Operator : SM\AJ  
 Sample : K3832-07  
 Misc :  
 ALS Vial : 10 Sample Multiplier: 1

Instrument :  
 ECD\_Q  
 ClientSampleId :  
 S12-07-B

Integration File signal 1: autoint1.e  
 Integration File signal 2: autoint2.e  
 Quant Time: Jul 16 14:23:06 2019  
 Quant Method : Z:\pestpcbsrv\HPCHEM1\ECD\_Q\Method\PQ071219.M  
 Quant Title : GC EXTRACTABLES  
 QLast Update : Sat Jul 13 02:14:45 2019  
 Response via : Initial Calibration  
 Integrator: ChemStation

Volume Inj. : 2 µl  
 Signal #1 Phase : ZB-MR1 Signal #2 Phase: ZB-MR2  
 Signal #1 Info : 30Mx0.32mmx 0.50µ Signal #2 Info : 30M x 0.32mm x 0.25µm

Compound	RT#1	RT#2	Resp#1	Resp#2	ng/ml	ng/ml
System Monitoring Compounds						
1) SA Tetrachlo...	5.715	4.770	173.7E6	116.4E6	17.102	17.855
2) SA Decachlor...	12.135	10.546	208.6E6	73263095	16.243	15.671
Target Compounds						
3) L1 AR-1016-1	0.000	6.226	0	3977126	N.D.	15.849 #
4) L1 AR-1016-2	0.000	6.250	0	5238389	N.D.	14.695 #
5) L1 AR-1016-3	0.000	6.464	0	5512056	N.D.	29.661 #
6) L1 AR-1016-4	7.339	6.517	8908921	36722358	30.782	240.930 #
7) L1 AR-1016-5	7.705	6.770	51115258	30417082	187.691	159.742
10) L2 AR-1221-3	0.000	5.367	0	13313252	N.D.	76.514 #
11) L3 AR-1232-1	0.000	5.367	0	13313252	N.D.	97.083 #
12) L3 AR-1232-2	0.000	6.250	0	5238389	N.D.	35.983 #
13) L3 AR-1232-3	0.000	6.464	0	5512056	N.D.	74.034 #
14) L3 AR-1232-4	7.339	6.567	8908921	19634387	79.409	309.218 #
15) L3 AR-1232-5	7.476	6.770	49756736	30417082	687.750	443.548 #
16) L4 AR-1242-1	0.000	6.226	0	3977126	N.D.	13.829 #
17) L4 AR-1242-2	0.000	6.250	0	5238389	N.D.	12.631 #
18) L4 AR-1242-3	0.000	6.464	0	5512056	N.D.	25.828 #
19) L4 AR-1242-4	7.339	6.567	8908921	19634387	26.723	99.346 #
20) L4 AR-1242-5	8.194	7.180	136.1E6	240.3E6	283.793	809.309 #
21) L5 AR-1248-1	0.000	6.226	0	3977126	N.D.	20.357 #
22) L5 AR-1248-2	7.476	6.517	49756736	36722358	129.059	143.771
23) L5 AR-1248-3	7.705	6.567	51115258	19634387	104.159	75.334 #
24) L5 AR-1248-4	8.152	6.770	178.7E6	30417082	300.145	95.855 #
25) L5 AR-1248-5	8.194	7.226	136.1E6	63164136	232.758	189.213
26) L6 AR-1254-1	8.122	7.180	247.9E6	240.3E6	480.616	664.831 #
27) L6 AR-1254-2	8.360	7.348	599.0E6	288.7E6	928.816	944.799
28) L6 AR-1254-3	8.754	7.796	860.0E6	658.6E6	1175.545	1328.272
29) L6 AR-1254-4	9.058	8.044	1070.0E6	543.2E6	1691.594	1593.839
30) L6 AR-1254-5	9.497	8.491	2134.6E6	992.0E6	3696.151	2365.121 #
31) L7 AR-1260-1	8.927	7.938	586.2E6	420.2E6	1108.307	1236.816
32) L7 AR-1260-2	9.198	8.141	1144.7E6	566.5E6	1527.175	1273.831
33) L7 AR-1260-3	9.574	8.306	472.3E6	415.9E6	736.319	1115.144 #
34) L7 AR-1260-4	9.811	8.806	965.9E6	184.4E6	1591.945	613.287 #
35) L7 AR-1260-5	10.167	9.056	1027.3E6	602.2E6	719.888	813.208
36) L8 AR-1262-1	9.574	8.529	472.3E6	266.6E6	470.011	490.559
37) L8 AR-1262-2	10.167	9.056	1027.3E6	602.2E6	576.193	682.050
38) L8 AR-1262-3	10.524	9.351	703.1E6	104.6E6	604.263	299.971 #
39) L8 AR-1262-4	10.603	9.418	137.5E6	301.1E6	151.277	491.094 #
40) L8 AR-1262-5	11.319	9.944	221.9E6	85871332	349.424	327.831
41) L9 AR-1268-1	10.524	9.351	703.1E6	104.6E6	344.039	114.940 #
42) L9 AR-1268-2	10.603	9.418	137.5E6	301.1E6	74.852	372.655 #
43) L9 AR-1268-3	10.854	9.634	29251881	13549790	18.241	20.761

Data Path : Z:\pestpcbsrv\HPCHEM1\ECD\_Q\Data\PQ071619\  
 Data File : PQ041223.D  
 Signal(s) : Signal #1: ECD1A.ch Signal #2: ECD2B.ch  
 Acq On : 16 Jul 2019 11:32  
 Operator : SM\AJ  
 Sample : K3832-07  
 Misc :  
 ALS Vial : 10 Sample Multiplier: 1

Instrument :  
 ECD\_Q  
 ClientSampleId :  
 S12-07-B

Integration File signal 1: autoint1.e  
 Integration File signal 2: autoint2.e  
 Quant Time: Jul 16 14:23:06 2019  
 Quant Method : Z:\pestpcbsrv\HPCHEM1\ECD\_Q\Method\PQ071219.M  
 Quant Title : GC EXTRACTABLES  
 QLast Update : Sat Jul 13 02:14:45 2019  
 Response via : Initial Calibration  
 Integrator: ChemStation

Volume Inj. : 2 µl  
 Signal #1 Phase : ZB-MR1 Signal #2 Phase: ZB-MR2  
 Signal #1 Info : 30Mx0.32mmx 0.50µ Signal #2 Info : 30M x 0.32mm x 0.25µm

	Compound	RT#1	RT#2	Resp#1	Resp#2	ng/ml	ng/ml
44)	L9 AR-1268-4	11.319	9.944	221.9E6	85871332	337.173	311.751
45)	L9 AR-1268-5	11.767	10.263	90915517	33901675	18.445	19.149

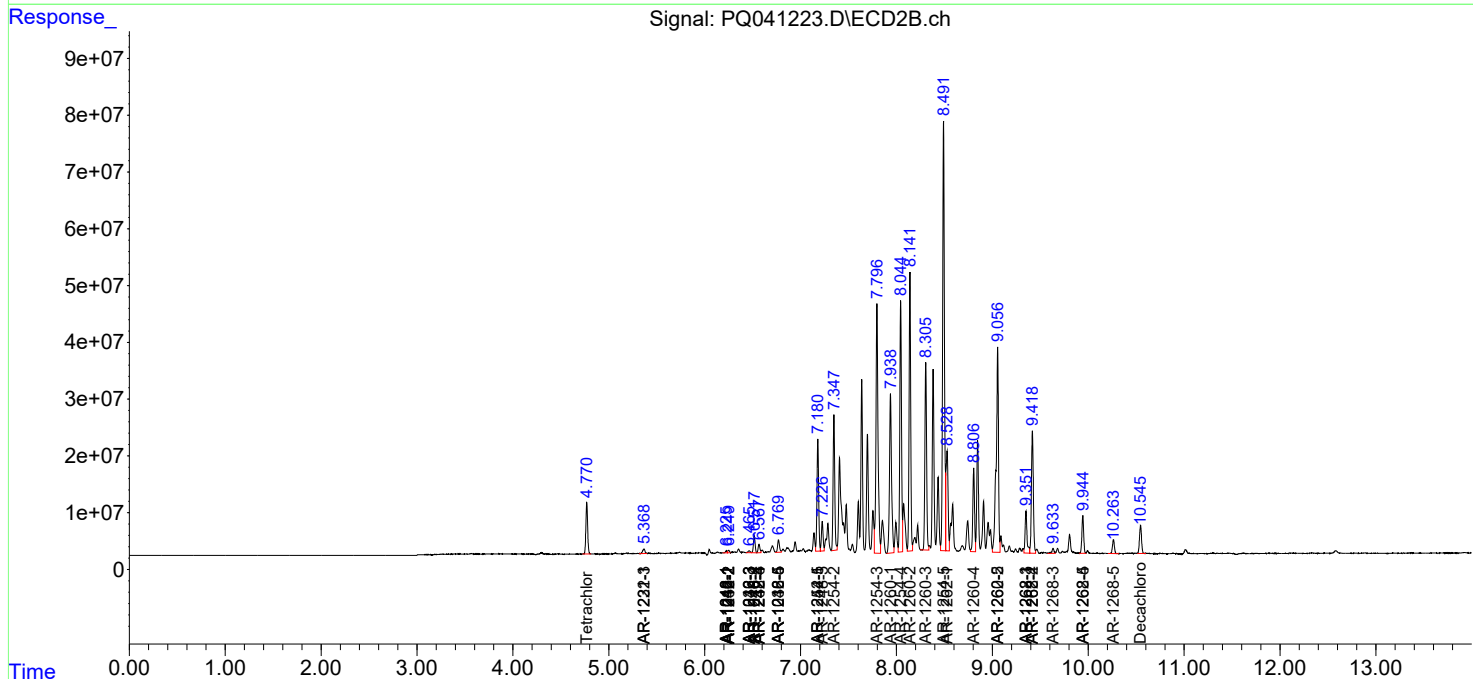
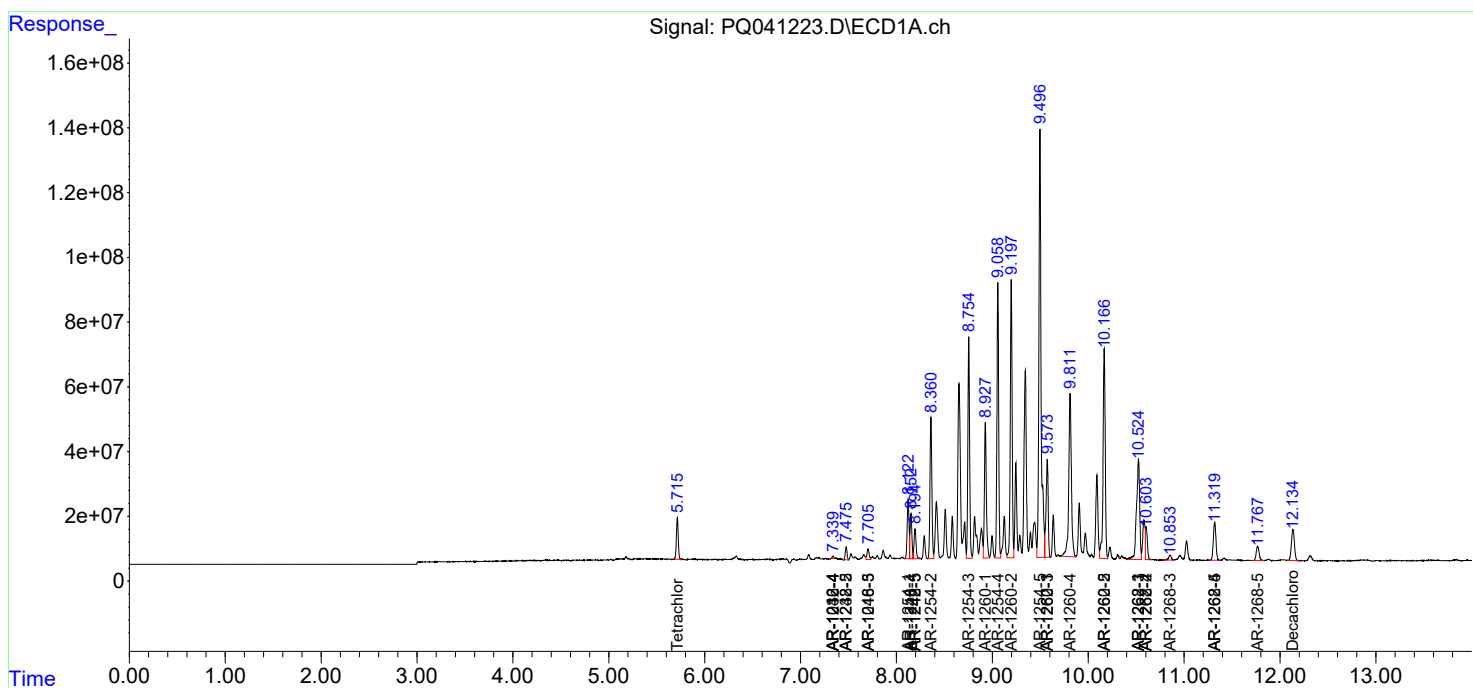
(f)=RT Delta > 1/2 Window (#)=Amounts differ by > 25% (m)=manual int.

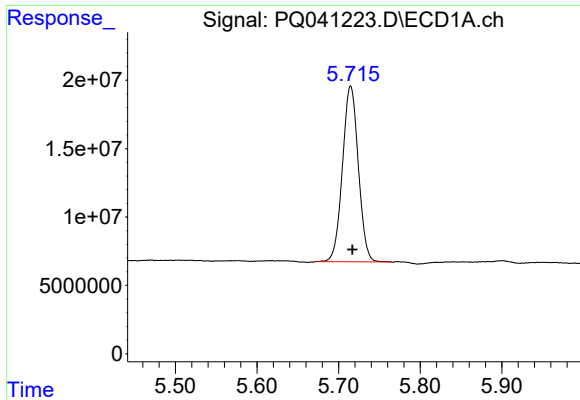
Data Path : Z:\pestpcbsrv\HPCHEM1\ECD\_Q\Data\PQ071619\  
 Data File : PQ041223.D  
 Signal(s) : Signal #1: ECD1A.ch Signal #2: ECD2B.ch  
 Acq On : 16 Jul 2019 11:32  
 Operator : SM\AJ  
 Sample : K3832-07  
 Misc :  
 ALS Vial : 10 Sample Multiplier: 1

Instrument :  
 ECD\_Q  
 ClientSampled :  
 S12-07-B

Integration File signal 1: autoint1.e  
 Integration File signal 2: autoint2.e  
 Quant Time: Jul 16 14:23:06 2019  
 Quant Method : Z:\pestpcbsrv\HPCHEM1\ECD\_Q\Method\PQ071219.M  
 Quant Title : GC EXTRACTABLES  
 QLast Update : Sat Jul 13 02:14:45 2019  
 Response via : Initial Calibration  
 Integrator: ChemStation

Volume Inj. : 2 µl  
 Signal #1 Phase : ZB-MR1 Signal #2 Phase: ZB-MR2  
 Signal #1 Info : 30Mx0.32mmx 0.50µ Signal #2 Info : 30M x 0.32mm x 0.25µm

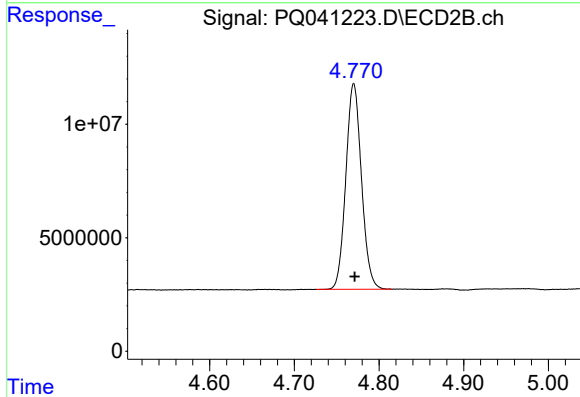




#1 Tetrachloro-m-xylene

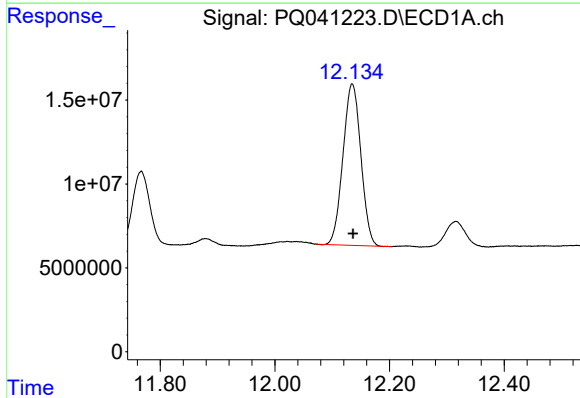
R.T.: 5.715 min  
 Delta R.T.: -0.002 min  
 Response: 173723373  
 Conc: 17.10 ng/ml

Instrument :  
 ECD\_Q  
 ClientSampled :  
 S12-07-B



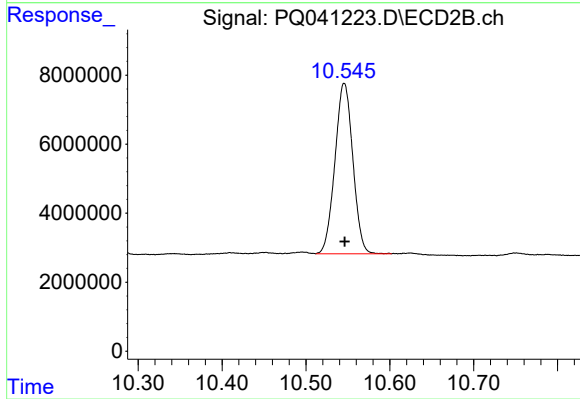
#1 Tetrachloro-m-xylene

R.T.: 4.770 min  
 Delta R.T.: -0.001 min  
 Response: 116428254  
 Conc: 17.85 ng/ml



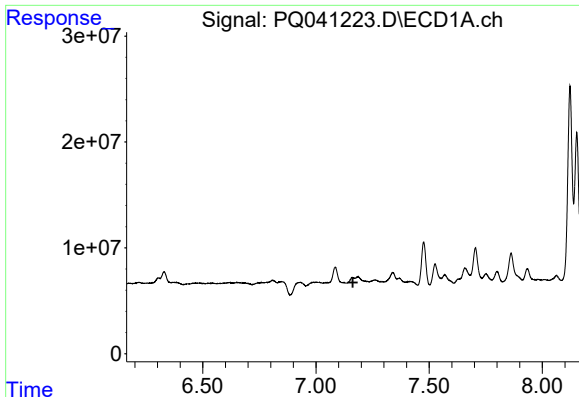
#2 Decachlorobiphenyl

R.T.: 12.135 min  
 Delta R.T.: -0.002 min  
 Response: 208601246  
 Conc: 16.24 ng/ml



#2 Decachlorobiphenyl

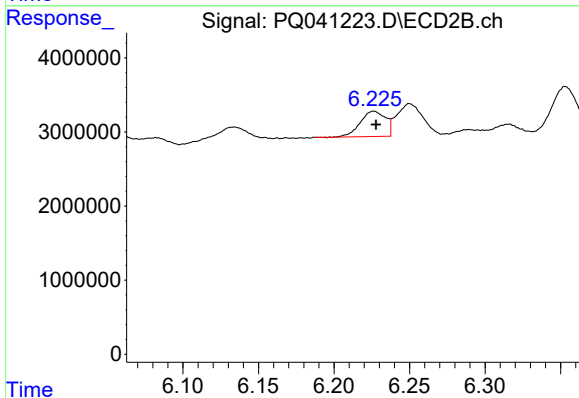
R.T.: 10.546 min  
 Delta R.T.: 0.000 min  
 Response: 73263095  
 Conc: 15.67 ng/ml



#3 AR-1016-1

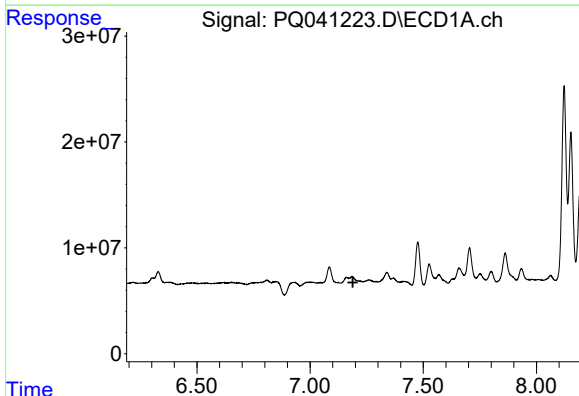
R.T.: 0.000 min  
 Exp R.T.: 7.163 min  
 Response: 0  
 Conc: N.D.

Instrument :  
 ECD\_Q  
 ClientSampled :  
 S12-07-B



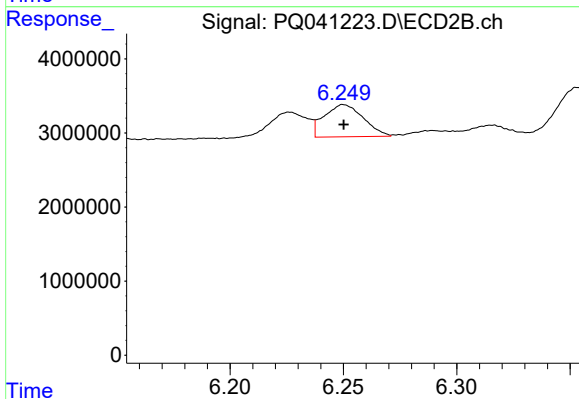
#3 AR-1016-1

R.T.: 6.226 min  
 Delta R.T.: -0.002 min  
 Response: 3977126  
 Conc: 15.85 ng/ml



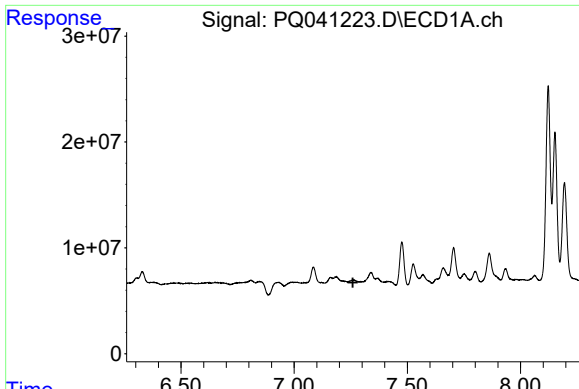
#4 AR-1016-2

R.T.: 0.000 min  
 Exp R.T.: 7.189 min  
 Response: 0  
 Conc: N.D.



#4 AR-1016-2

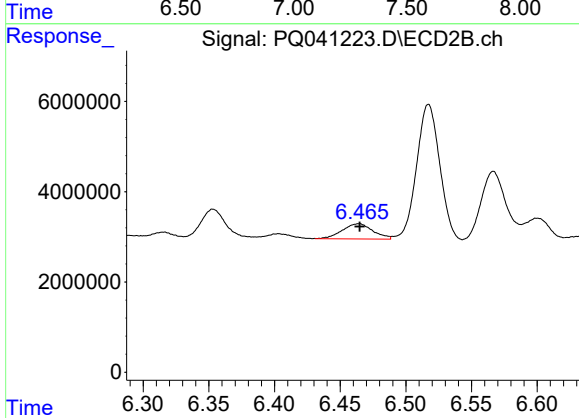
R.T.: 6.250 min  
 Delta R.T.: 0.000 min  
 Response: 5238389  
 Conc: 14.70 ng/ml



#5 AR-1016-3

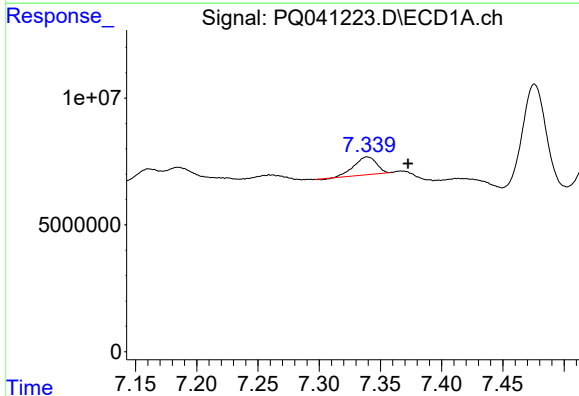
R.T.: 0.000 min  
 Exp R.T.: 7.259 min  
 Response: 0  
 Conc: N.D.

Instrument :  
 ECD\_Q  
 ClientSampleId :  
 S12-07-B



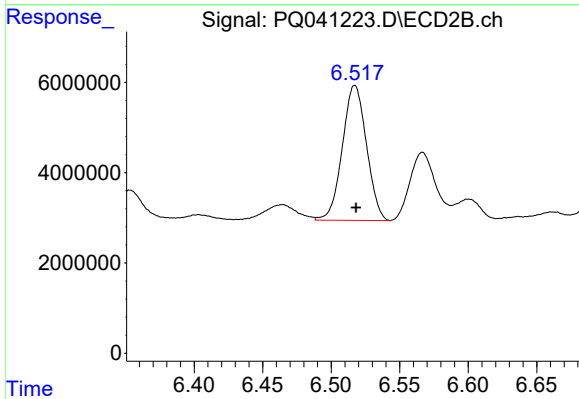
#5 AR-1016-3

R.T.: 6.464 min  
 Delta R.T.: 0.000 min  
 Response: 5512056  
 Conc: 29.66 ng/ml



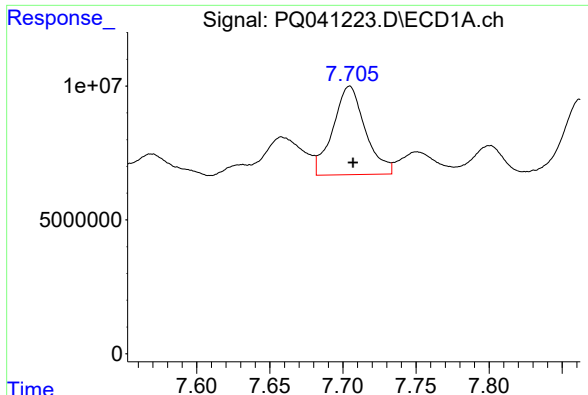
#6 AR-1016-4

R.T.: 7.339 min  
 Delta R.T.: -0.033 min  
 Response: 8908921  
 Conc: 30.78 ng/ml



#6 AR-1016-4

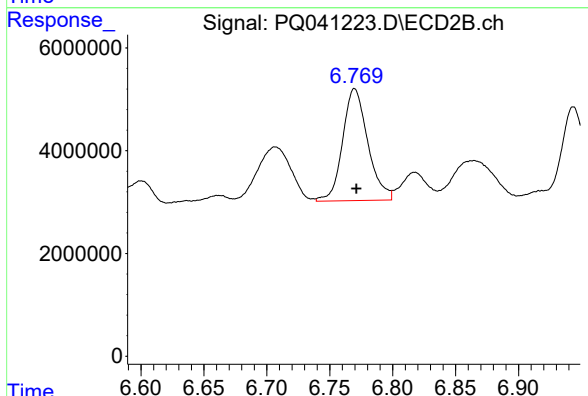
R.T.: 6.517 min  
 Delta R.T.: 0.000 min  
 Response: 36722358  
 Conc: 240.93 ng/ml



#7 AR-1016-5

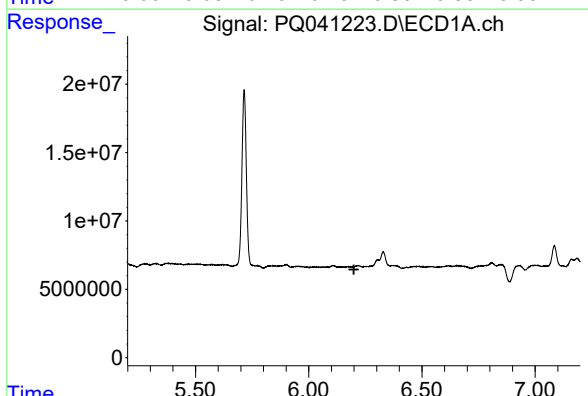
R.T.: 7.705 min  
 Delta R.T.: -0.002 min  
 Response: 51115258  
 Conc: 187.69 ng/ml

Instrument :  
 ECD\_Q  
 ClientSampleId :  
 S12-07-B



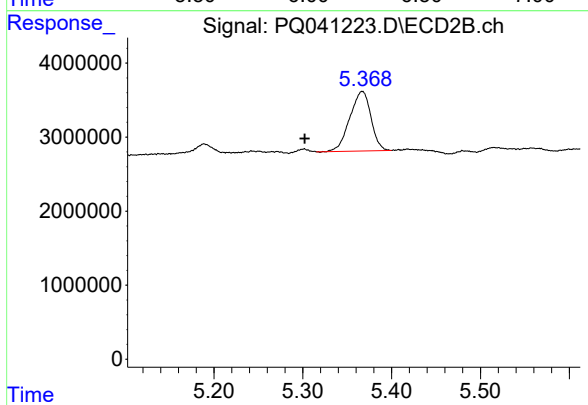
#7 AR-1016-5

R.T.: 6.770 min  
 Delta R.T.: -0.001 min  
 Response: 30417082  
 Conc: 159.74 ng/ml



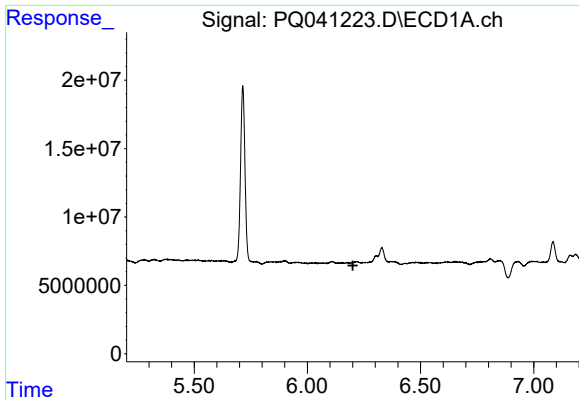
#10 AR-1221-3

R.T.: 0.000 min  
 Exp R.T. : 6.200 min  
 Response: 0  
 Conc: N.D.



#10 AR-1221-3

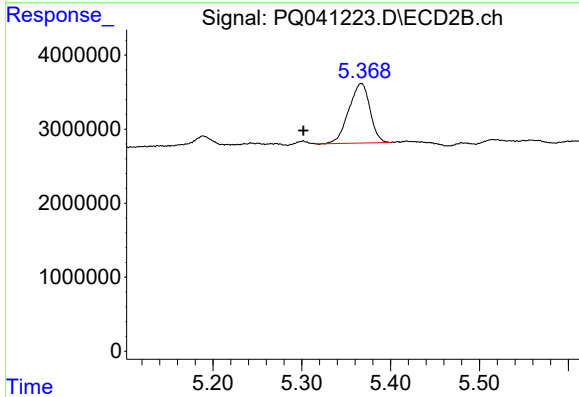
R.T.: 5.367 min  
 Delta R.T.: 0.065 min  
 Response: 13313252  
 Conc: 76.51 ng/ml



#11 AR-1232-1

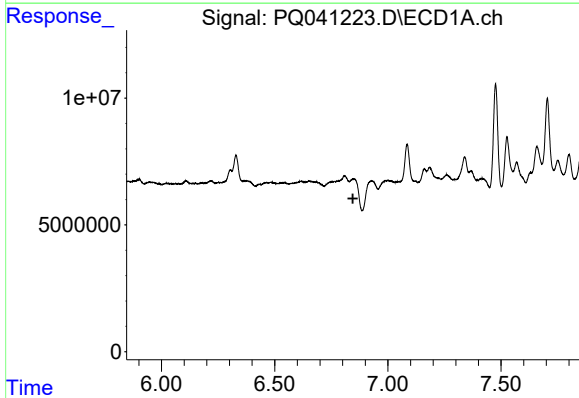
R.T.: 0.000 min  
 Exp R.T. : 6.201 min  
 Response: 0  
 Conc: N.D.

**Instrument :**  
 ECD\_Q  
**ClientSampled :**  
 S12-07-B



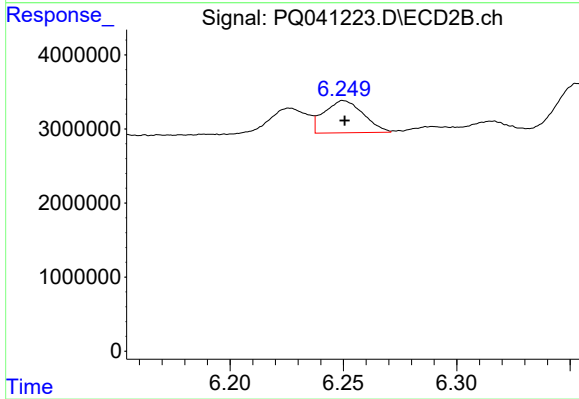
#11 AR-1232-1

R.T.: 5.367 min  
 Delta R.T.: 0.065 min  
 Response: 13313252  
 Conc: 97.08 ng/ml



#12 AR-1232-2

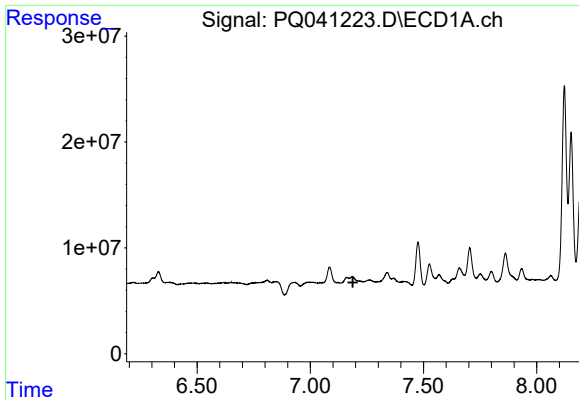
R.T.: 0.000 min  
 Exp R.T. : 6.846 min  
 Response: 0  
 Conc: N.D.



#12 AR-1232-2

R.T.: 6.250 min  
 Delta R.T.: 0.000 min  
 Response: 5238389  
 Conc: 35.98 ng/ml

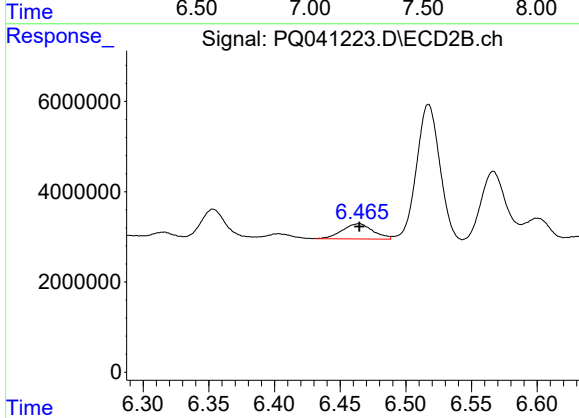




#13 AR-1232-3

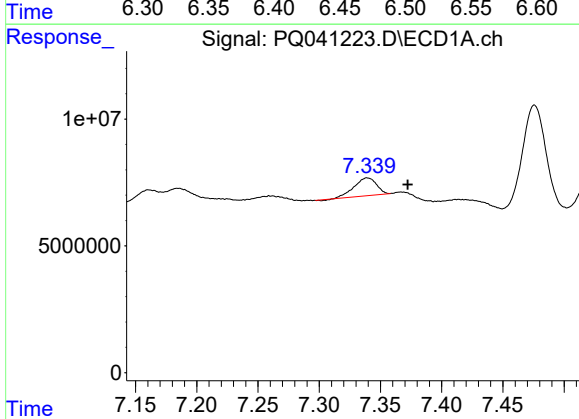
R.T.: 0.000 min  
 Exp R.T.: 7.188 min  
 Response: 0  
 Conc: N.D.

**Instrument :**  
 ECD\_Q  
**ClientSampleId :**  
 S12-07-B



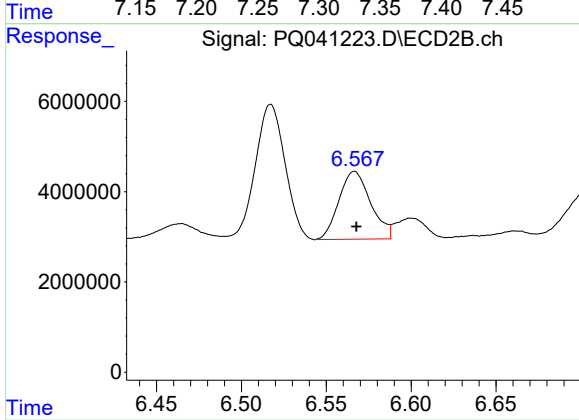
#13 AR-1232-3

R.T.: 6.464 min  
 Delta R.T.: 0.000 min  
 Response: 5512056  
 Conc: 74.03 ng/ml



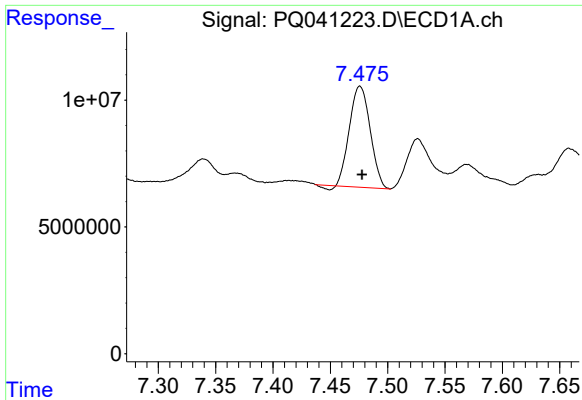
#14 AR-1232-4

R.T.: 7.339 min  
 Delta R.T.: -0.033 min  
 Response: 8908921  
 Conc: 79.41 ng/ml



#14 AR-1232-4

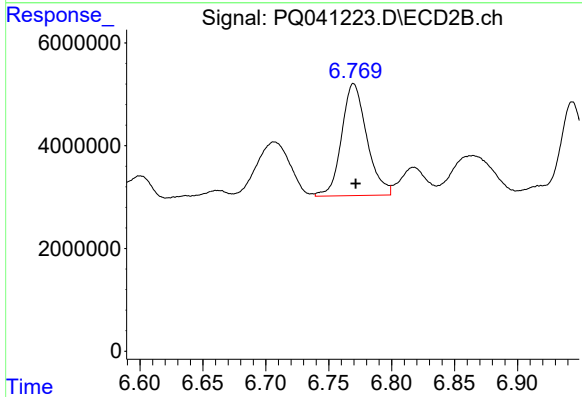
R.T.: 6.567 min  
 Delta R.T.: -0.001 min  
 Response: 19634387  
 Conc: 309.22 ng/ml



#15 AR-1232-5

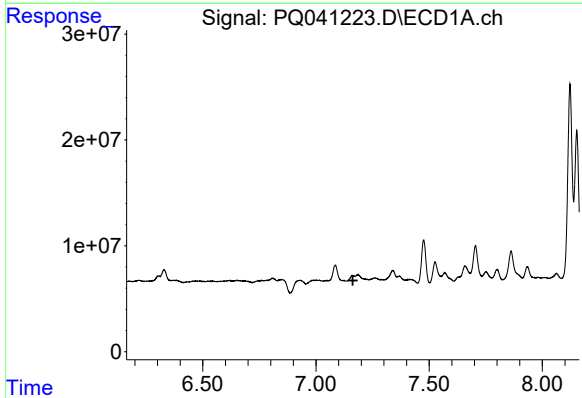
R.T.: 7.476 min  
 Delta R.T.: -0.002 min  
 Response: 49756736  
 Conc: 687.75 ng/ml

Instrument :  
 ECD\_Q  
 ClientSampleId :  
 S12-07-B



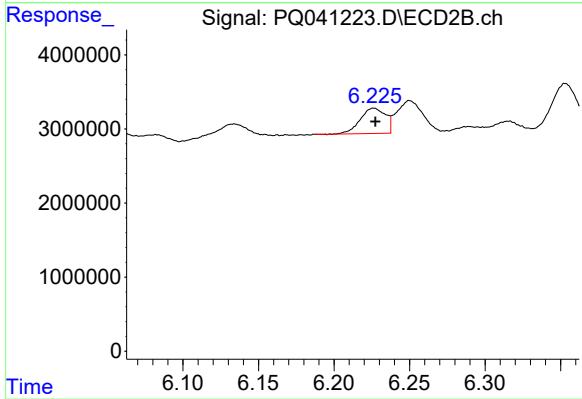
#15 AR-1232-5

R.T.: 6.770 min  
 Delta R.T.: -0.002 min  
 Response: 30417082  
 Conc: 443.55 ng/ml



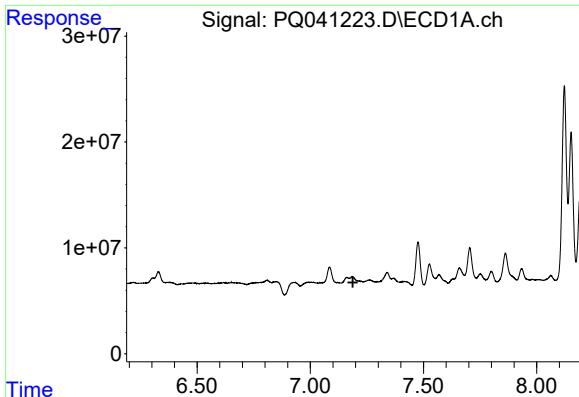
#16 AR-1242-1

R.T.: 0.000 min  
 Exp R.T. : 7.163 min  
 Response: 0  
 Conc: N.D.



#16 AR-1242-1

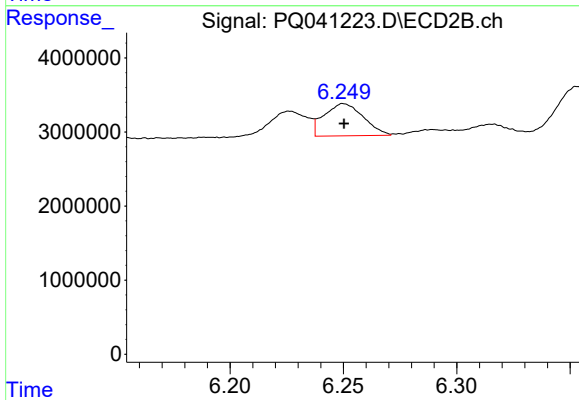
R.T.: 6.226 min  
 Delta R.T.: -0.001 min  
 Response: 3977126  
 Conc: 13.83 ng/ml



#17 AR-1242-2

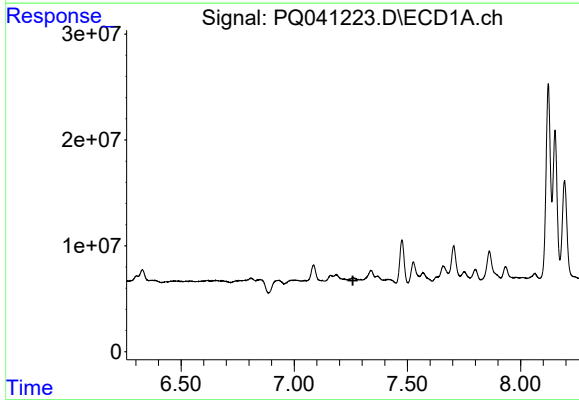
R.T.: 0.000 min  
 Exp R.T. : 7.188 min  
 Response: 0  
 Conc: N.D.

Instrument :  
 ECD\_Q  
 ClientSampleId :  
 S12-07-B



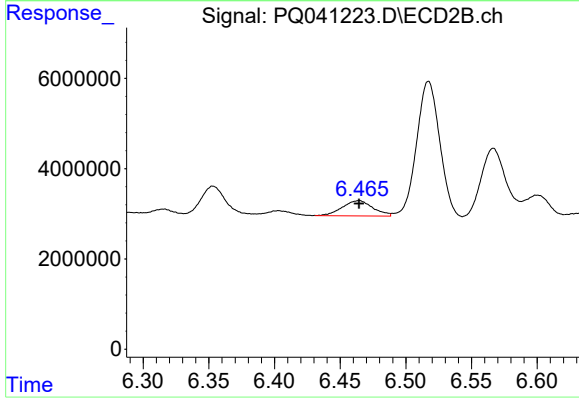
#17 AR-1242-2

R.T.: 6.250 min  
 Delta R.T.: 0.000 min  
 Response: 5238389  
 Conc: 12.63 ng/ml



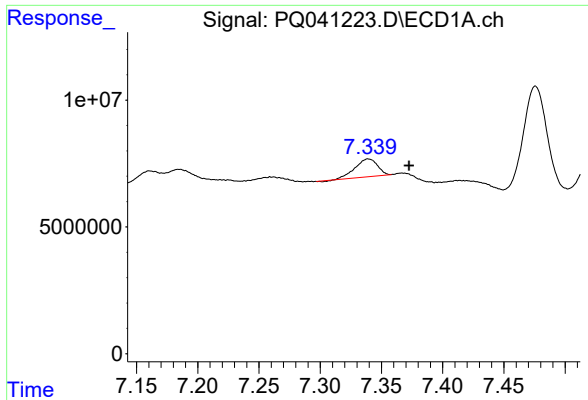
#18 AR-1242-3

R.T.: 0.000 min  
 Exp R.T. : 7.259 min  
 Response: 0  
 Conc: N.D.



#18 AR-1242-3

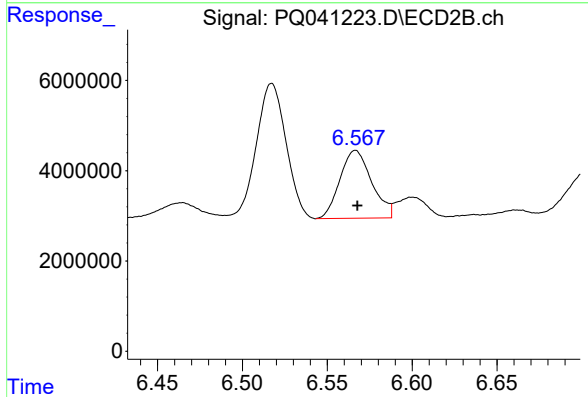
R.T.: 6.464 min  
 Delta R.T.: 0.000 min  
 Response: 5512056  
 Conc: 25.83 ng/ml



#19 AR-1242-4

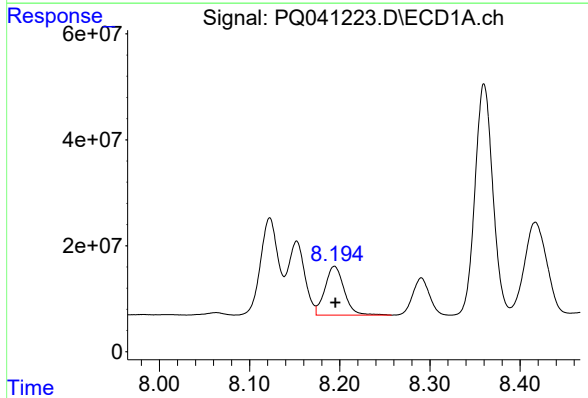
R.T.: 7.339 min  
 Delta R.T.: -0.033 min  
 Response: 8908921  
 Conc: 26.72 ng/ml

**Instrument :**  
 ECD\_Q  
**ClientSampled :**  
 S12-07-B



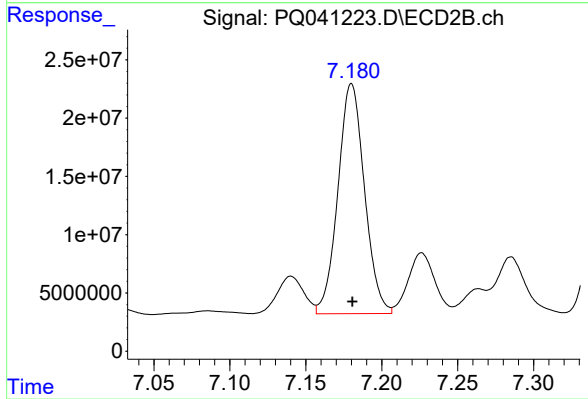
#19 AR-1242-4

R.T.: 6.567 min  
 Delta R.T.: -0.001 min  
 Response: 19634387  
 Conc: 99.35 ng/ml



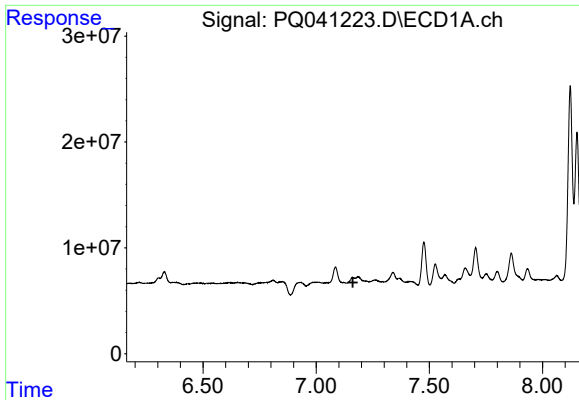
#20 AR-1242-5

R.T.: 8.194 min  
 Delta R.T.: -0.001 min  
 Response: 136121478  
 Conc: 283.79 ng/ml



#20 AR-1242-5

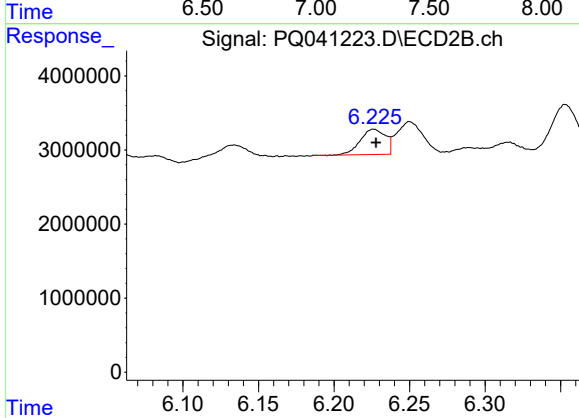
R.T.: 7.180 min  
 Delta R.T.: 0.000 min  
 Response: 240343442  
 Conc: 809.31 ng/ml



#21 AR-1248-1

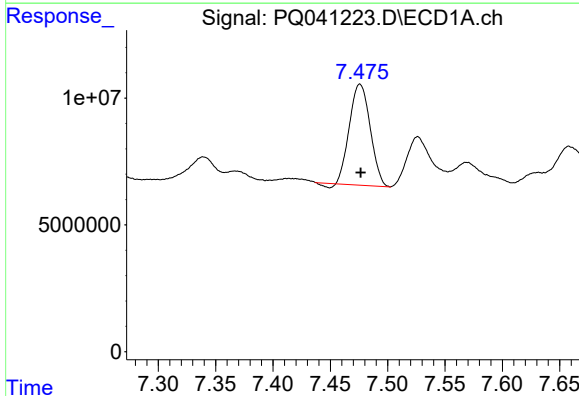
R.T.: 0.000 min  
 Exp R.T.: 7.162 min  
 Response: 0  
 Conc: N.D.

**Instrument :**  
 ECD\_Q  
**ClientSampled :**  
 S12-07-B



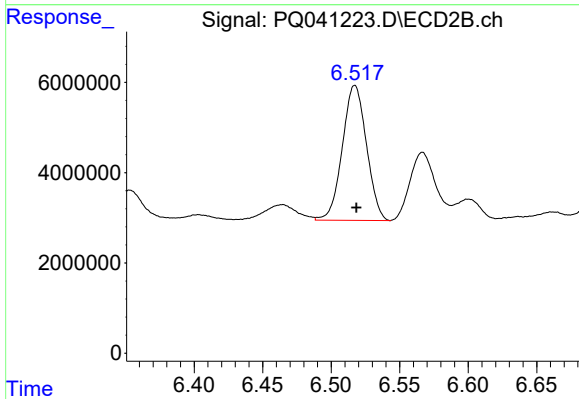
#21 AR-1248-1

R.T.: 6.226 min  
 Delta R.T.: -0.002 min  
 Response: 3977126  
 Conc: 20.36 ng/ml



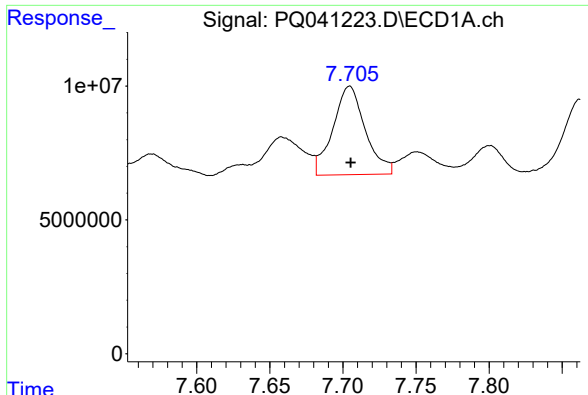
#22 AR-1248-2

R.T.: 7.476 min  
 Delta R.T.: 0.000 min  
 Response: 49756736  
 Conc: 129.06 ng/ml



#22 AR-1248-2

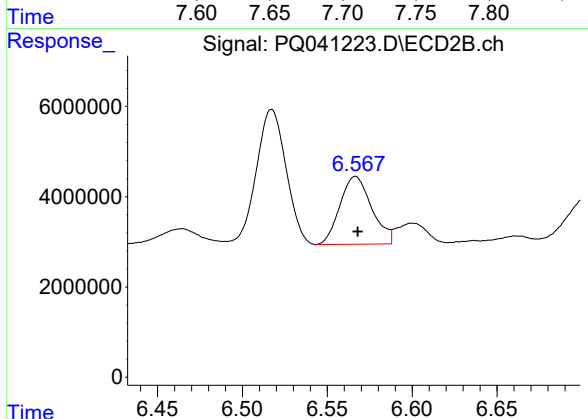
R.T.: 6.517 min  
 Delta R.T.: -0.001 min  
 Response: 36722358  
 Conc: 143.77 ng/ml



#23 AR-1248-3

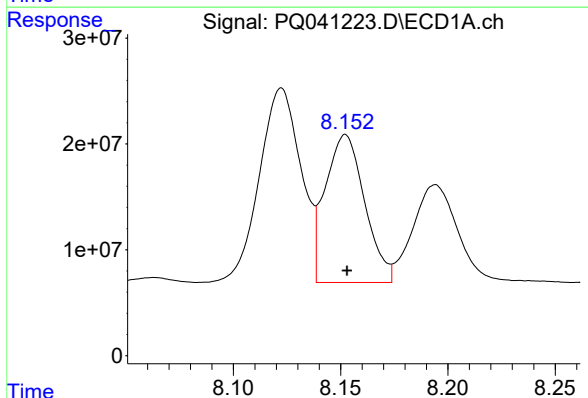
R.T.: 7.705 min  
 Delta R.T.: 0.000 min  
 Response: 51115258  
 Conc: 104.16 ng/ml

Instrument :  
 ECD\_Q  
 ClientSampleId :  
 S12-07-B



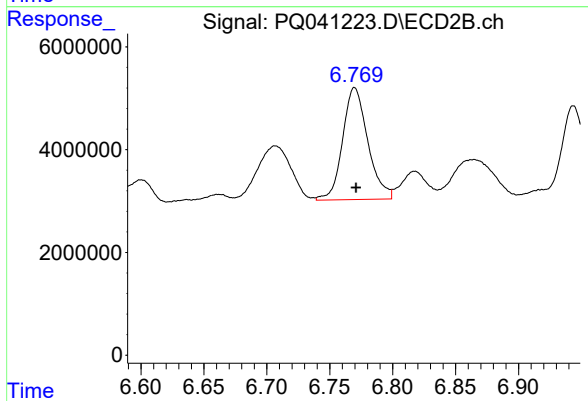
#23 AR-1248-3

R.T.: 6.567 min  
 Delta R.T.: -0.001 min  
 Response: 19634387  
 Conc: 75.33 ng/ml



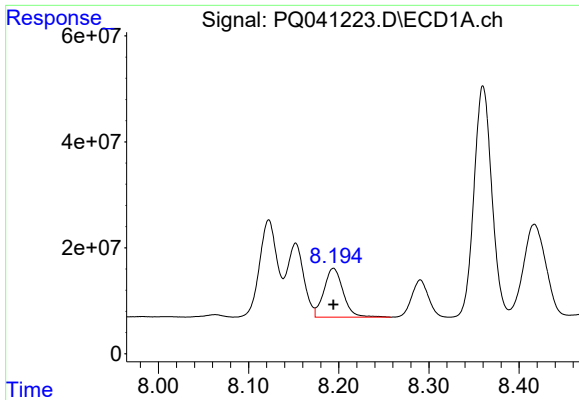
#24 AR-1248-4

R.T.: 8.152 min  
 Delta R.T.: 0.000 min  
 Response: 178651640  
 Conc: 300.15 ng/ml



#24 AR-1248-4

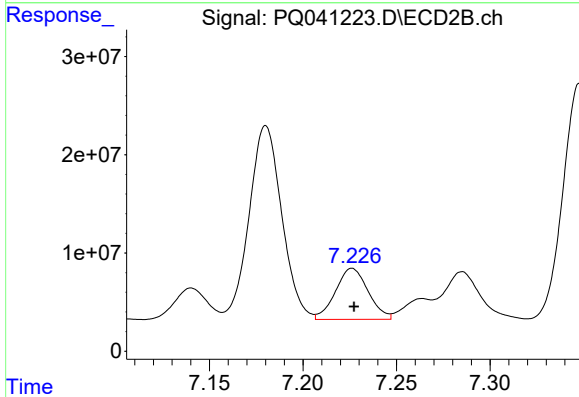
R.T.: 6.770 min  
 Delta R.T.: -0.001 min  
 Response: 30417082  
 Conc: 95.86 ng/ml



#25 AR-1248-5

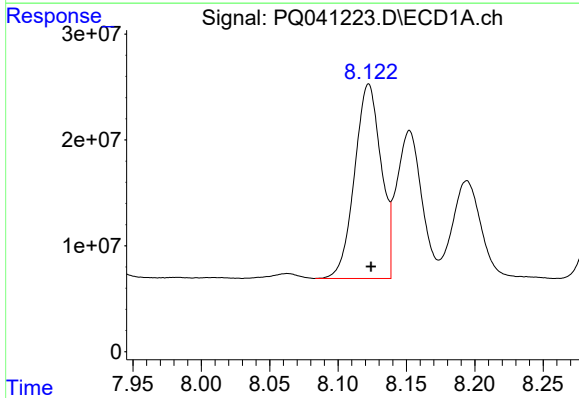
R.T.: 8.194 min  
 Delta R.T.: 0.000 min  
 Response: 136121478  
 Conc: 232.76 ng/ml

Instrument :  
 ECD\_Q  
 ClientSampleId :  
 S12-07-B



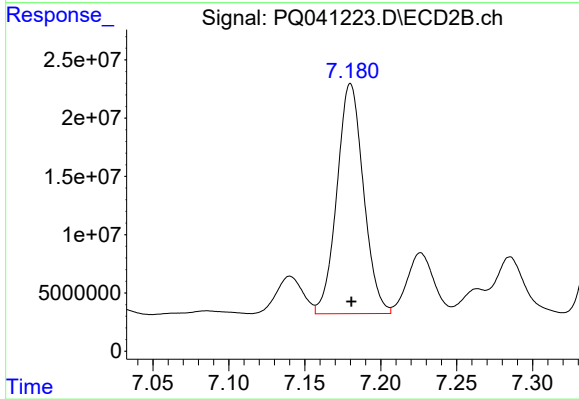
#25 AR-1248-5

R.T.: 7.226 min  
 Delta R.T.: -0.001 min  
 Response: 63164136  
 Conc: 189.21 ng/ml



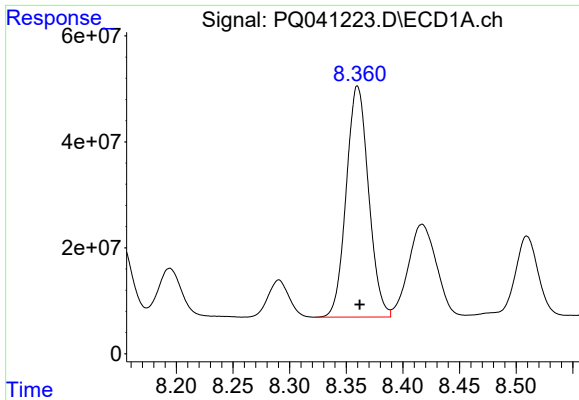
#26 AR-1254-1

R.T.: 8.122 min  
 Delta R.T.: -0.002 min  
 Response: 247867679  
 Conc: 480.62 ng/ml



#26 AR-1254-1

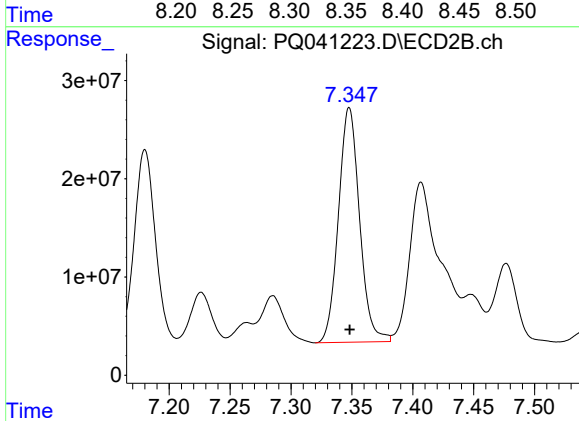
R.T.: 7.180 min  
 Delta R.T.: 0.000 min  
 Response: 240343442  
 Conc: 664.83 ng/ml



#27 AR-1254-2

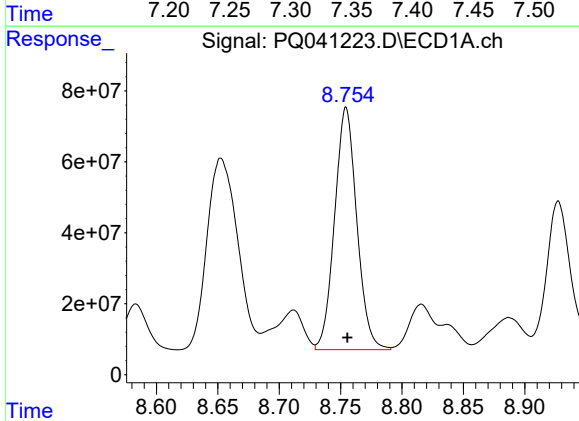
R.T.: 8.360 min  
 Delta R.T.: -0.002 min  
 Response: 598973466  
 Conc: 928.82 ng/ml

Instrument :  
 ECD\_Q  
 ClientSampleId :  
 S12-07-B



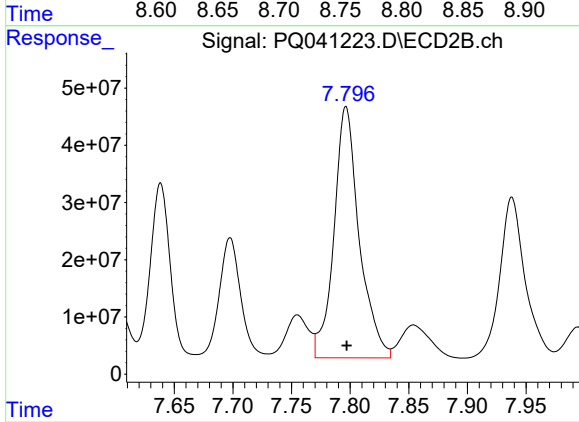
#27 AR-1254-2

R.T.: 7.348 min  
 Delta R.T.: 0.000 min  
 Response: 288714568  
 Conc: 944.80 ng/ml



#28 AR-1254-3

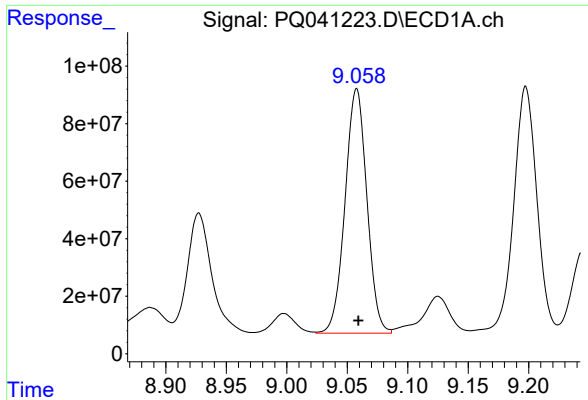
R.T.: 8.754 min  
 Delta R.T.: 0.000 min  
 Response: 859955931  
 Conc: 1175.54 ng/ml



#28 AR-1254-3

R.T.: 7.796 min  
 Delta R.T.: 0.000 min  
 Response: 658558682  
 Conc: 1328.27 ng/ml

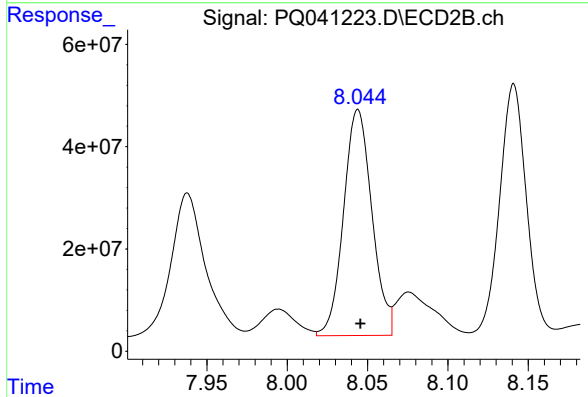




#29 AR-1254-4

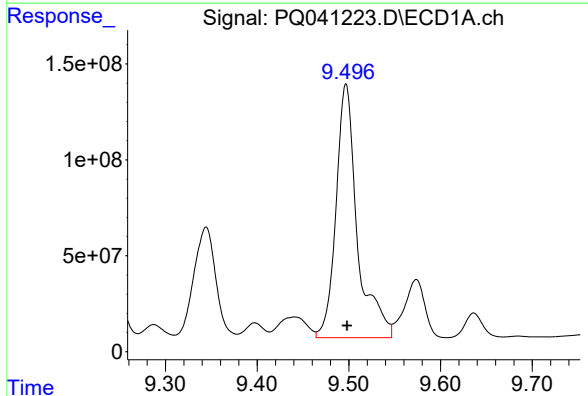
R.T.: 9.058 min  
 Delta R.T.: -0.001 min  
 Response: 1070024265  
 Conc: 1691.59 ng/ml

Instrument :  
 ECD\_Q  
 ClientSampled :  
 S12-07-B



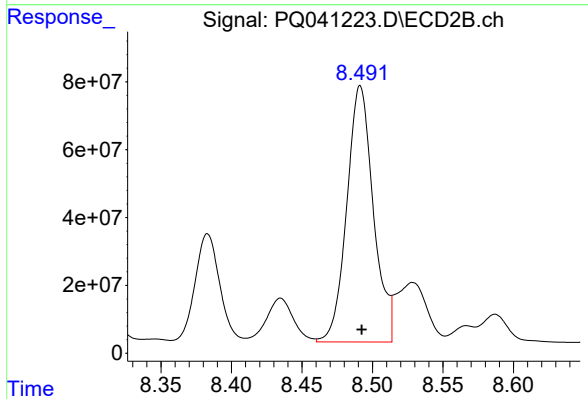
#29 AR-1254-4

R.T.: 8.044 min  
 Delta R.T.: -0.001 min  
 Response: 543180159  
 Conc: 1593.84 ng/ml



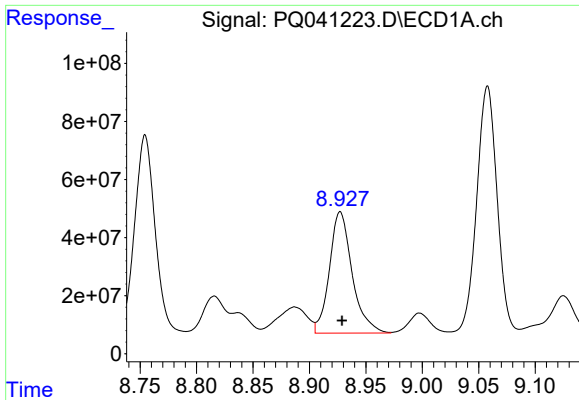
#30 AR-1254-5

R.T.: 9.497 min  
 Delta R.T.: -0.001 min  
 Response: 2134578998  
 Conc: 3696.15 ng/ml



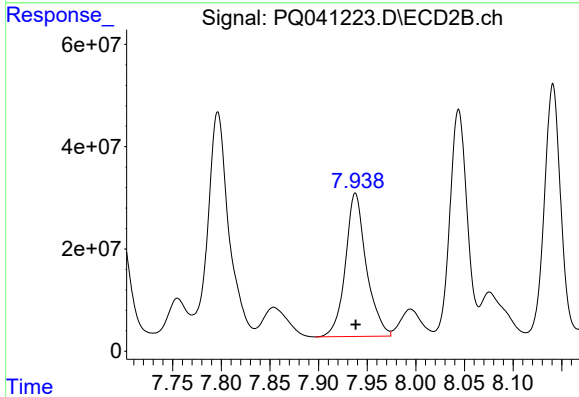
#30 AR-1254-5

R.T.: 8.491 min  
 Delta R.T.: -0.001 min  
 Response: 991994952  
 Conc: 2365.12 ng/ml

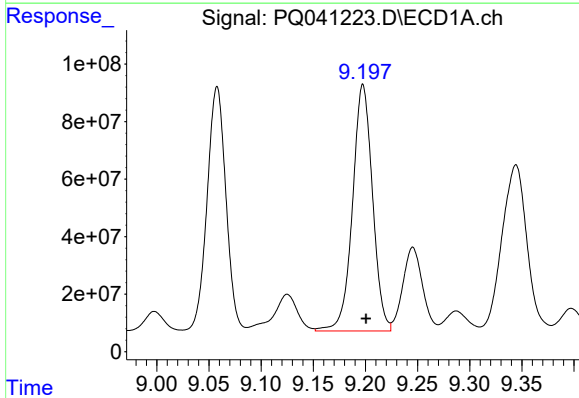


#31 AR-1260-1  
 R.T.: 8.927 min  
 Delta R.T.: -0.002 min  
 Response: 586157704  
 Conc: 1108.31 ng/ml

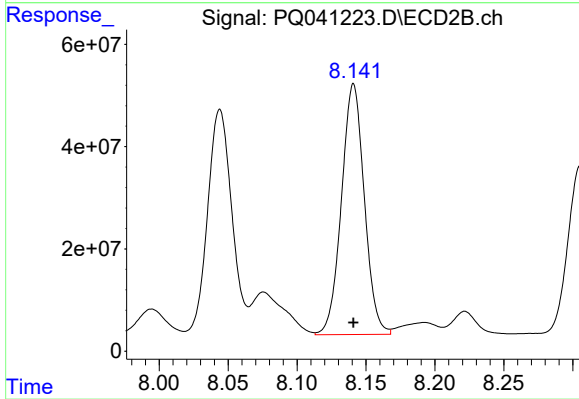
**Instrument :**  
 ECD\_Q  
**ClientSampled :**  
 S12-07-B



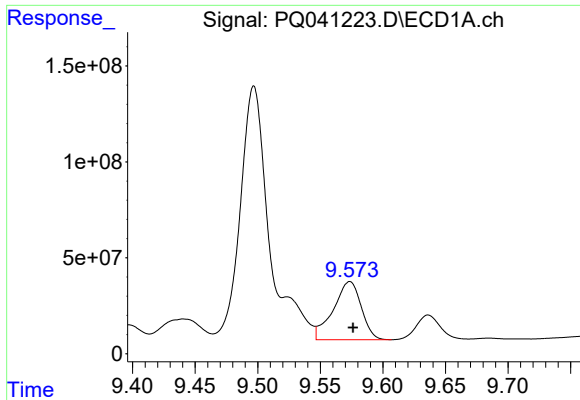
#31 AR-1260-1  
 R.T.: 7.938 min  
 Delta R.T.: 0.000 min  
 Response: 420244552  
 Conc: 1236.82 ng/ml



#32 AR-1260-2  
 R.T.: 9.198 min  
 Delta R.T.: -0.003 min  
 Response: 1144668072  
 Conc: 1527.18 ng/ml

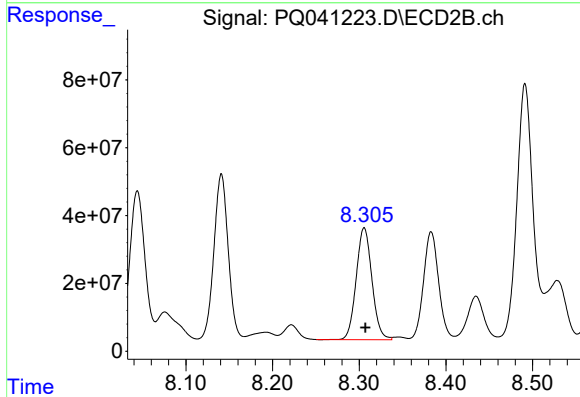


#32 AR-1260-2  
 R.T.: 8.141 min  
 Delta R.T.: 0.000 min  
 Response: 566473056  
 Conc: 1273.83 ng/ml

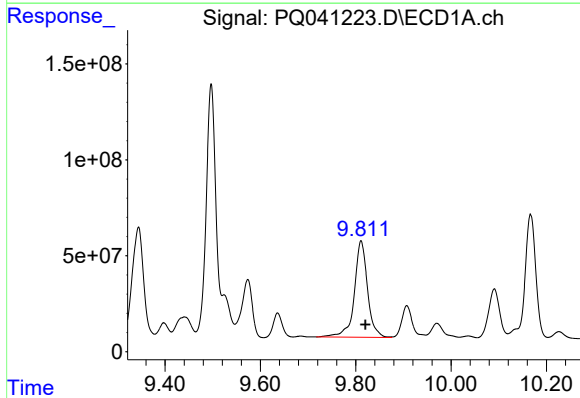


#33 AR-1260-3  
 R.T.: 9.574 min  
 Delta R.T.: -0.003 min  
 Response: 472332537  
 Conc: 736.32 ng/ml

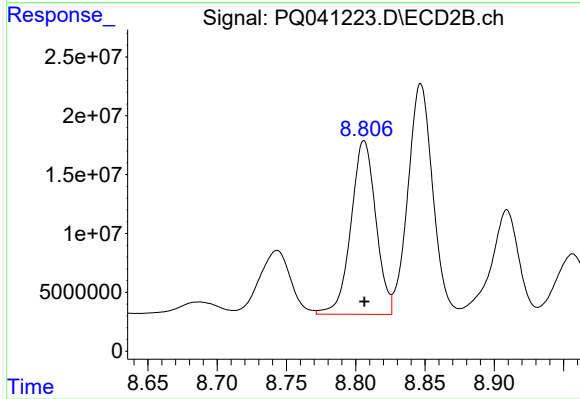
Instrument :  
 ECD\_Q  
 ClientSampled :  
 S12-07-B



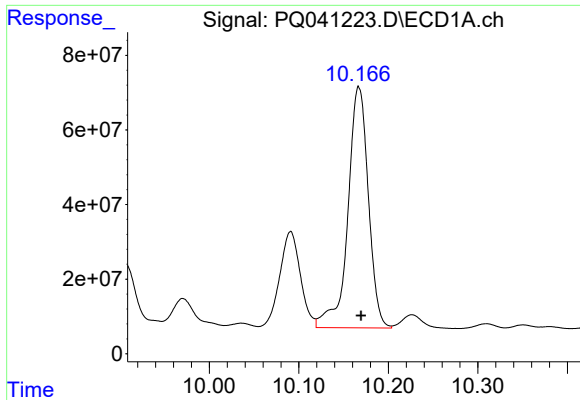
#33 AR-1260-3  
 R.T.: 8.306 min  
 Delta R.T.: -0.001 min  
 Response: 415862950  
 Conc: 1115.14 ng/ml



#34 AR-1260-4  
 R.T.: 9.811 min  
 Delta R.T.: -0.009 min  
 Response: 965880964  
 Conc: 1591.95 ng/ml

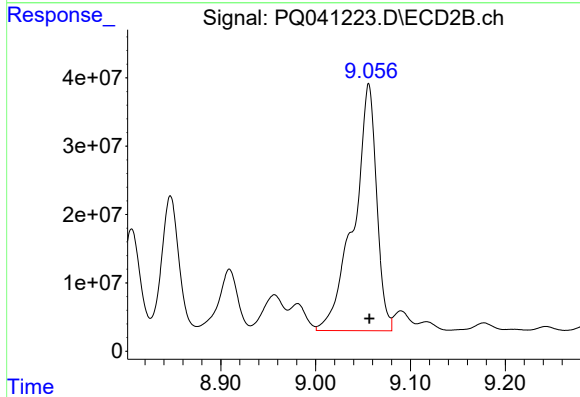


#34 AR-1260-4  
 R.T.: 8.806 min  
 Delta R.T.: 0.000 min  
 Response: 184433553  
 Conc: 613.29 ng/ml

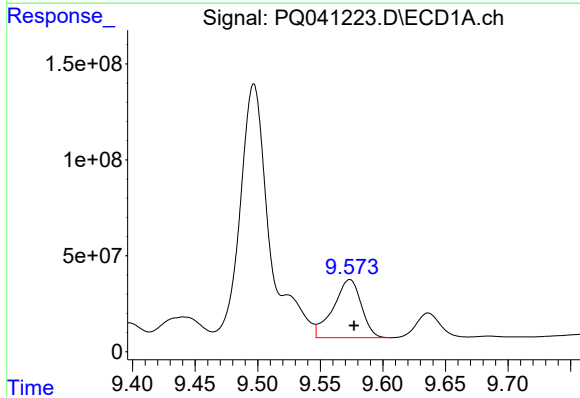


#35 AR-1260-5  
 R.T.: 10.167 min  
 Delta R.T.: -0.003 min  
 Response: 1027343281  
 Conc: 719.89 ng/ml

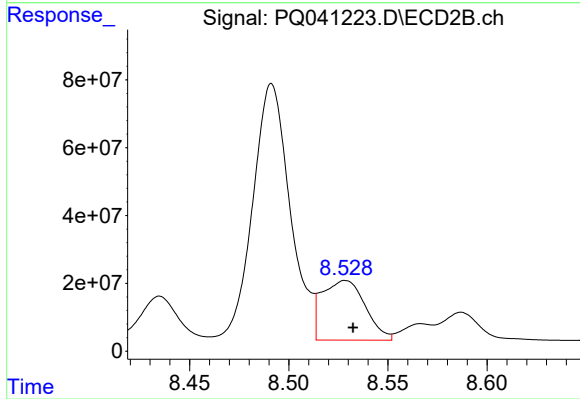
Instrument :  
 ECD\_Q  
 ClientSampleId :  
 S12-07-B



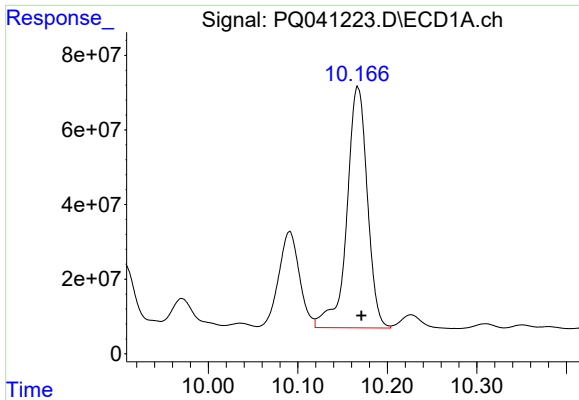
#35 AR-1260-5  
 R.T.: 9.056 min  
 Delta R.T.: 0.000 min  
 Response: 602190172  
 Conc: 813.21 ng/ml



#36 AR-1262-1  
 R.T.: 9.574 min  
 Delta R.T.: -0.003 min  
 Response: 472332537  
 Conc: 470.01 ng/ml



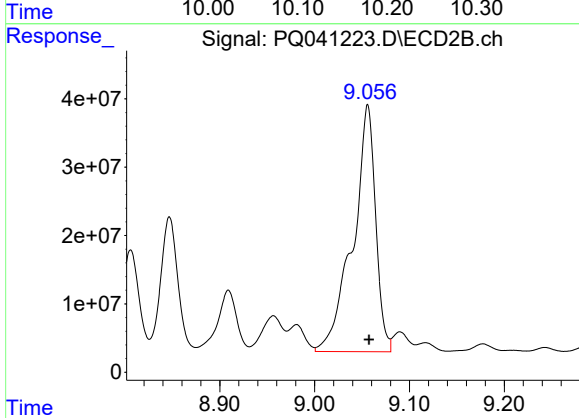
#36 AR-1262-1  
 R.T.: 8.529 min  
 Delta R.T.: -0.004 min  
 Response: 266586846  
 Conc: 490.56 ng/ml



#37 AR-1262-2

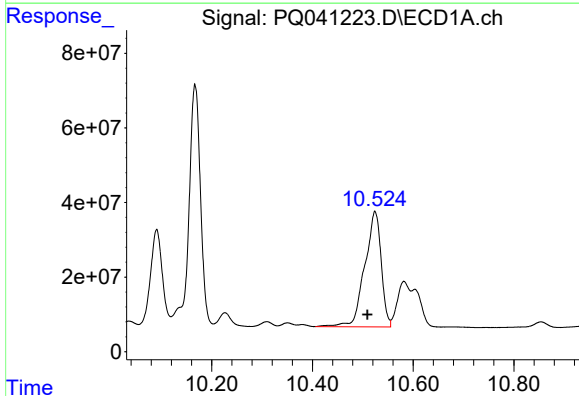
R.T.: 10.167 min  
 Delta R.T.: -0.004 min  
 Response: 1027343281  
 Conc: 576.19 ng/ml

Instrument :  
 ECD\_Q  
 ClientSampled :  
 S12-07-B



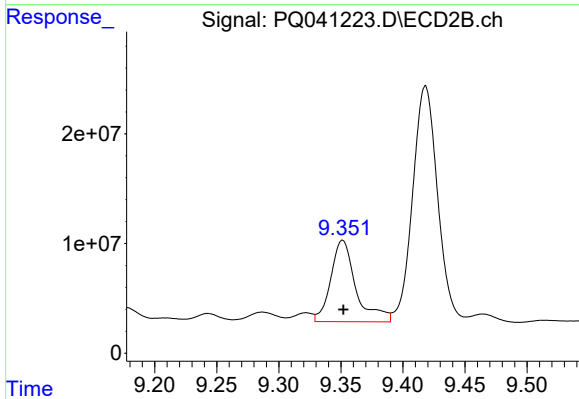
#37 AR-1262-2

R.T.: 9.056 min  
 Delta R.T.: -0.001 min  
 Response: 602190172  
 Conc: 682.05 ng/ml



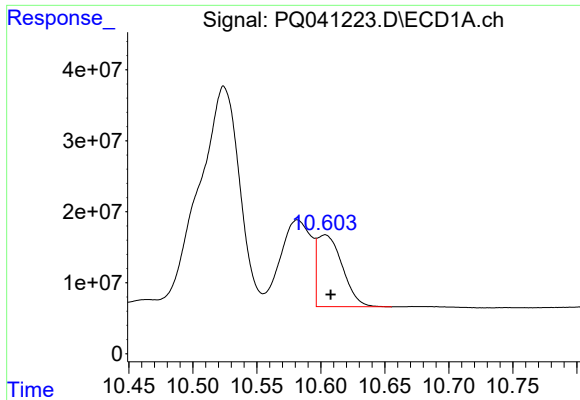
#38 AR-1262-3

R.T.: 10.524 min  
 Delta R.T.: 0.015 min  
 Response: 703079907  
 Conc: 604.26 ng/ml



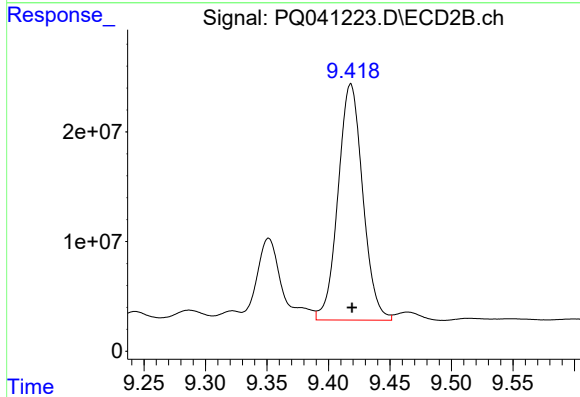
#38 AR-1262-3

R.T.: 9.351 min  
 Delta R.T.: 0.000 min  
 Response: 104581452  
 Conc: 299.97 ng/ml

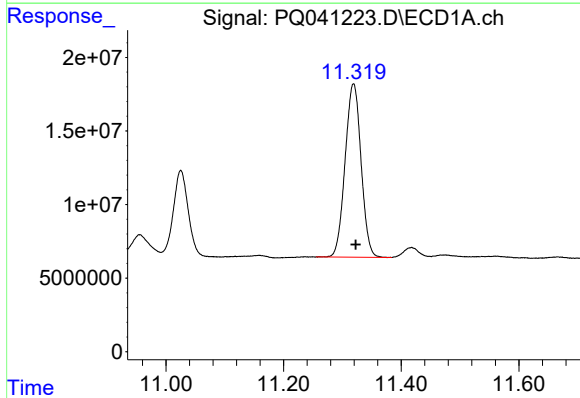


#39 AR-1262-4  
 R.T.: 10.603 min  
 Delta R.T.: -0.004 min  
 Response: 137480885  
 Conc: 151.28 ng/ml

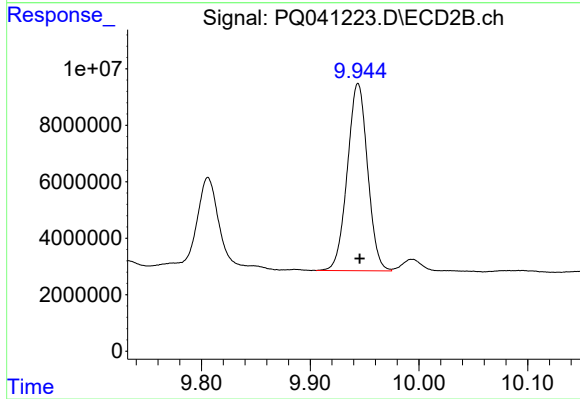
Instrument :  
 ECD\_Q  
 ClientSampled :  
 S12-07-B



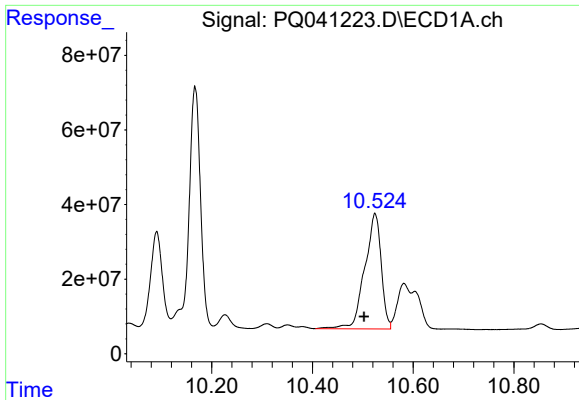
#39 AR-1262-4  
 R.T.: 9.418 min  
 Delta R.T.: 0.000 min  
 Response: 301129766  
 Conc: 491.09 ng/ml



#40 AR-1262-5  
 R.T.: 11.319 min  
 Delta R.T.: -0.004 min  
 Response: 221904221  
 Conc: 349.42 ng/ml



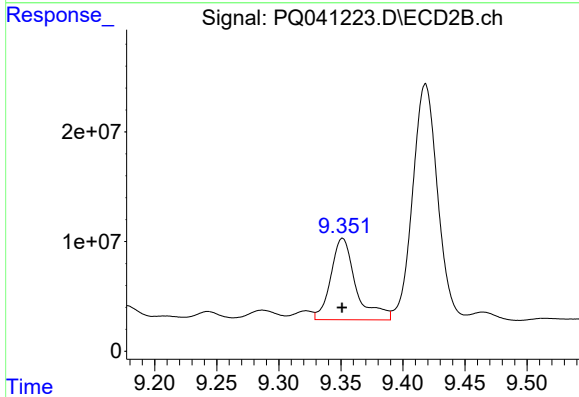
#40 AR-1262-5  
 R.T.: 9.944 min  
 Delta R.T.: -0.001 min  
 Response: 85871332  
 Conc: 327.83 ng/ml



#41 AR-1268-1

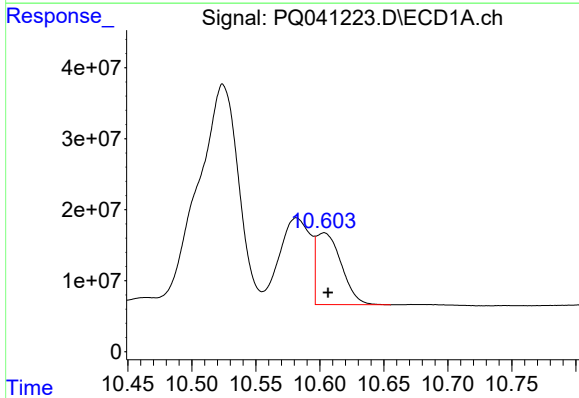
R.T.: 10.524 min  
 Delta R.T.: 0.022 min  
 Response: 703079907  
 Conc: 344.04 ng/ml

Instrument :  
 ECD\_Q  
 ClientSampleId :  
 S12-07-B



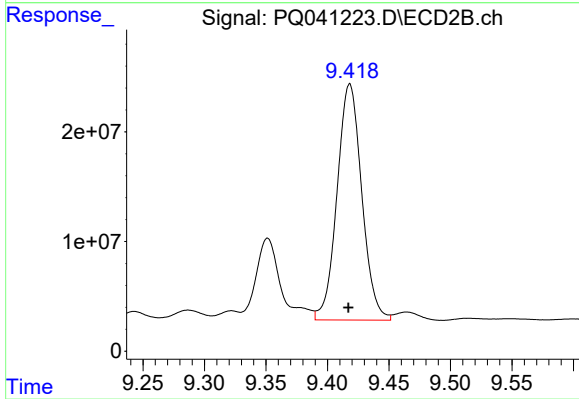
#41 AR-1268-1

R.T.: 9.351 min  
 Delta R.T.: 0.000 min  
 Response: 104581452  
 Conc: 114.94 ng/ml



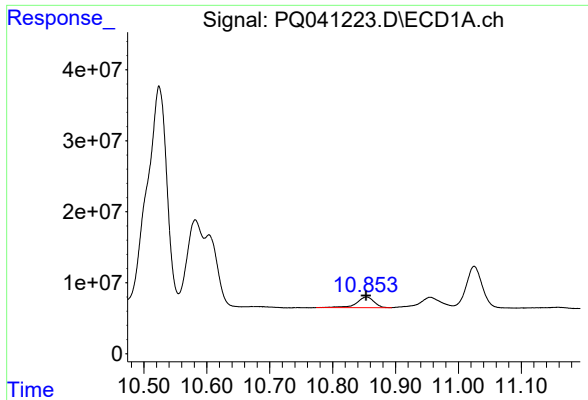
#42 AR-1268-2

R.T.: 10.603 min  
 Delta R.T.: -0.003 min  
 Response: 137480885  
 Conc: 74.85 ng/ml



#42 AR-1268-2

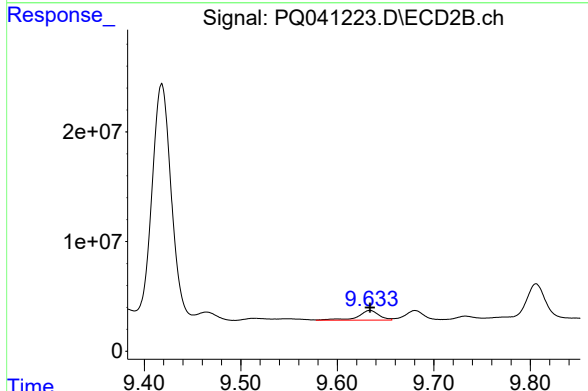
R.T.: 9.418 min  
 Delta R.T.: 0.000 min  
 Response: 301129766  
 Conc: 372.65 ng/ml



#43 AR-1268-3

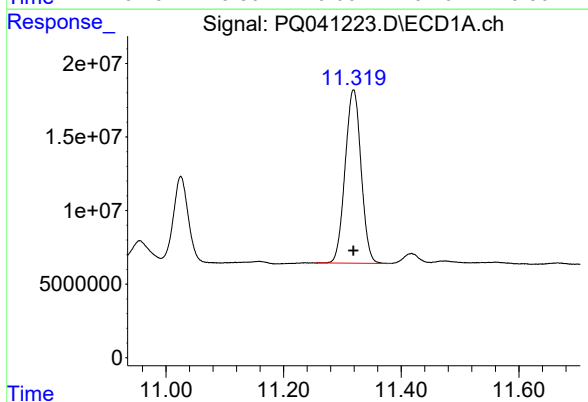
R.T.: 10.854 min  
 Delta R.T.: 0.000 min  
 Response: 29251881  
 Conc: 18.24 ng/ml

Instrument :  
 ECD\_Q  
 ClientSampled :  
 S12-07-B



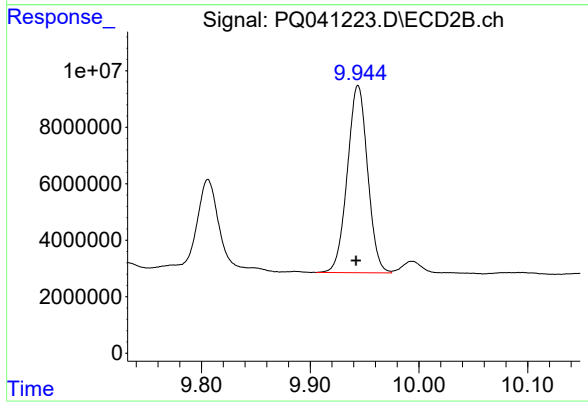
#43 AR-1268-3

R.T.: 9.634 min  
 Delta R.T.: 0.000 min  
 Response: 13549790  
 Conc: 20.76 ng/ml



#44 AR-1268-4

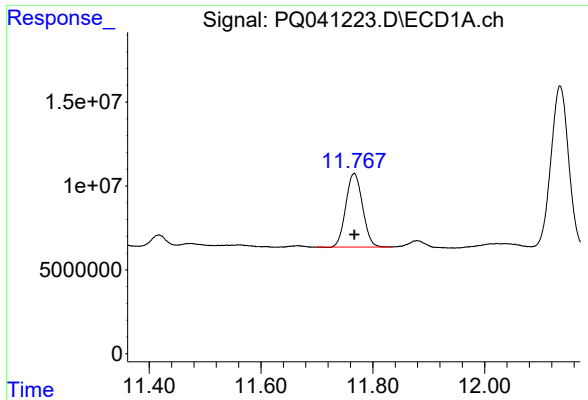
R.T.: 11.319 min  
 Delta R.T.: 0.000 min  
 Response: 221904221  
 Conc: 337.17 ng/ml



#44 AR-1268-4

R.T.: 9.944 min  
 Delta R.T.: 0.002 min  
 Response: 85871332  
 Conc: 311.75 ng/ml

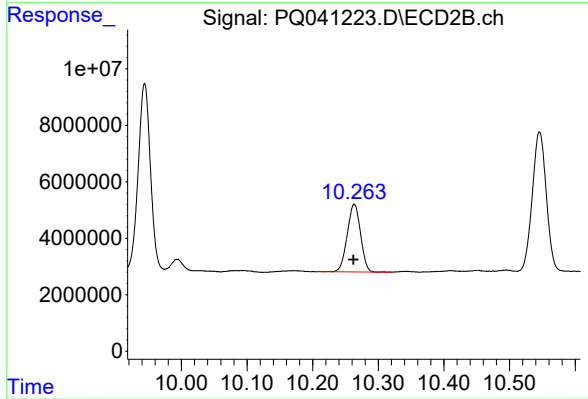




#45 AR-1268-5

R.T.: 11.767 min  
Delta R.T.: 0.000 min  
Response: 90915517  
Conc: 18.44 ng/ml

Instrument :  
ECD\_Q  
ClientSampled :  
S12-07-B



#45 AR-1268-5

R.T.: 10.263 min  
Delta R.T.: 0.001 min  
Response: 33901675  
Conc: 19.15 ng/ml