

Data Path : Z:\pestpcbsrv\HPCHEM1\ECD_Q\Data\PQ082218\
 Data File : PQ031313.D
 Signal(s) : Signal #1: ECD1A.ch Signal #2: ECD2B.ch
 Acq On : 22 Aug 2018 11:08
 Operator : SM\SJ
 Sample : J4555-03RE
 Misc :
 ALS Vial : 9 Sample Multiplier: 1

Instrument :
 ECD_Q
 ClientSampleId :

Integration File signal 1: autoint1.e
 Integration File signal 2: autoint2.e
 Quant Time: Aug 23 04:09:58 2018
 Quant Method : Z:\pestpcbsrv\HPCHEM1\ECD_Q\Method\PQ082018.M
 Quant Title : GC EXTRACTABLES
 QLast Update : Wed Aug 22 08:49:07 2018
 Response via : Initial Calibration
 Integrator: ChemStation

Volume Inj. : 2 µl
 Signal #1 Phase : ZB-MR1 Signal #2 Phase: ZB-MR2
 Signal #1 Info : 30Mx0.32mmx 0.50µ Signal #2 Info : 30M x 0.32mm x 0.25µm

| Compound | RT#1 | RT#2 | Resp#1 | Resp#2 | ng/ml | ng/ml |
|-----------------------------|--------|-------|----------|----------|---------|-----------|
| System Monitoring Compounds | | | | | | |
| 1) SA Tetrachlo... | 4.611 | 3.881 | 31906012 | 27429133 | 15.334 | 15.325 |
| 2) SA Decachlor... | 10.475 | 8.971 | 16097970 | 16167936 | 8.525 | 8.505 |
| Target Compounds | | | | | | |
| 4) L1 AR-1016-2 | 5.813 | 5.001 | 4491924 | 3380674 | 70.919 | 54.272 |
| 5) L1 AR-1016-3 | 5.951 | 5.001 | 2628093 | 3380674 | 51.360 | 37.849 # |
| 6) L1 AR-1016-4 | 6.063 | 5.091 | 5223570 | 2042151 | 120.292 | 34.078 # |
| 7) L1 AR-1016-5 | 6.412 | 5.436 | 5210695 | 3725264 | 94.256 | 73.217 |
| 12) L3 AR-1232-2 | 0.000 | 5.001 | 0 | 3380674 | N.D. | 101.545 # |
| 13) L3 AR-1232-3 | 5.813 | 5.091 | 4491924 | 2042151 | 171.616 | 88.258 # |
| 14) L3 AR-1232-4 | 5.813 | 5.261 | 4491924 | 3170323 | 175.239 | 196.860 |
| 15) L3 AR-1232-5 | 6.268 | 5.586 | 4840899 | 2018141 | 266.173 | 107.075 # |
| 17) L4 AR-1242-2 | 5.813 | 5.001 | 4491924 | 3380674 | 96.555 | 56.715 # |
| 18) L4 AR-1242-3 | 5.813 | 5.179 | 4491924 | 1524815 | 65.375 | 48.058 # |
| 19) L4 AR-1242-4 | 6.268 | 5.219 | 4840899 | 3316612 | 135.347 | 133.803 |
| 20) L4 AR-1242-5 | 6.412 | 5.436 | 5210695 | 3725264 | 133.777 | 107.414 |
| 21) L5 AR-1248-1 | 6.268 | 5.219 | 4840899 | 3316612 | 77.480 | 69.352 |
| 22) L5 AR-1248-2 | 6.412 | 5.261 | 5210695 | 3170323 | 99.595 | 64.952 # |
| 23) L5 AR-1248-3 | 6.642 | 5.436 | 4962353 | 3725264 | 91.318 | 62.948 # |
| 24) L5 AR-1248-4 | 6.642 | 5.790 | 4962353 | 4266466 | 68.870 | 48.027 # |
| 25) L5 AR-1248-5 | 6.867 | 5.832 | 5382032 | 1747362 | 74.831 | 28.870 # |
| 26) L6 AR-1254-1 | 6.642 | 5.790 | 4962353 | 4266466 | 59.002 | 39.755 # |
| 27) L6 AR-1254-2 | 6.867 | 5.938 | 5382032 | 1252044 | 40.596 | 13.324 # |
| 28) L6 AR-1254-3 | 7.131 | 6.347 | 18873102 | 4205229 | 233.979 | 26.268 # |
| 29) L6 AR-1254-4 | 7.520 | 6.571 | 606141 | 1809739 | 5.675 | 18.222 # |
| 30) L6 AR-1254-5 | 7.943 | 6.991 | 3957612 | 3305612 | 34.723 | 23.760 # |
| 31) L7 AR-1260-1 | 0.000 | 6.478 | 0 | 2125884 | N.D. | 19.612 # |
| 32) L7 AR-1260-2 | 7.648 | 6.660 | 6133394 | 3316401 | 47.965 | 25.410 # |
| 33) L7 AR-1260-3 | 7.943 | 7.015 | 3957612 | 2005436 | 26.470 | 18.864 # |
| 36) L8 AR-1262-1 | 0.000 | 6.478 | 0 | 2125884 | N.D. | 24.475 # |
| 37) L8 AR-1262-2 | 7.648 | 6.660 | 6133394 | 3316401 | 59.526 | 31.665 # |
| 38) L8 AR-1262-3 | 7.943 | 7.015 | 3957612 | 2005436 | 39.854 | 13.643 # |

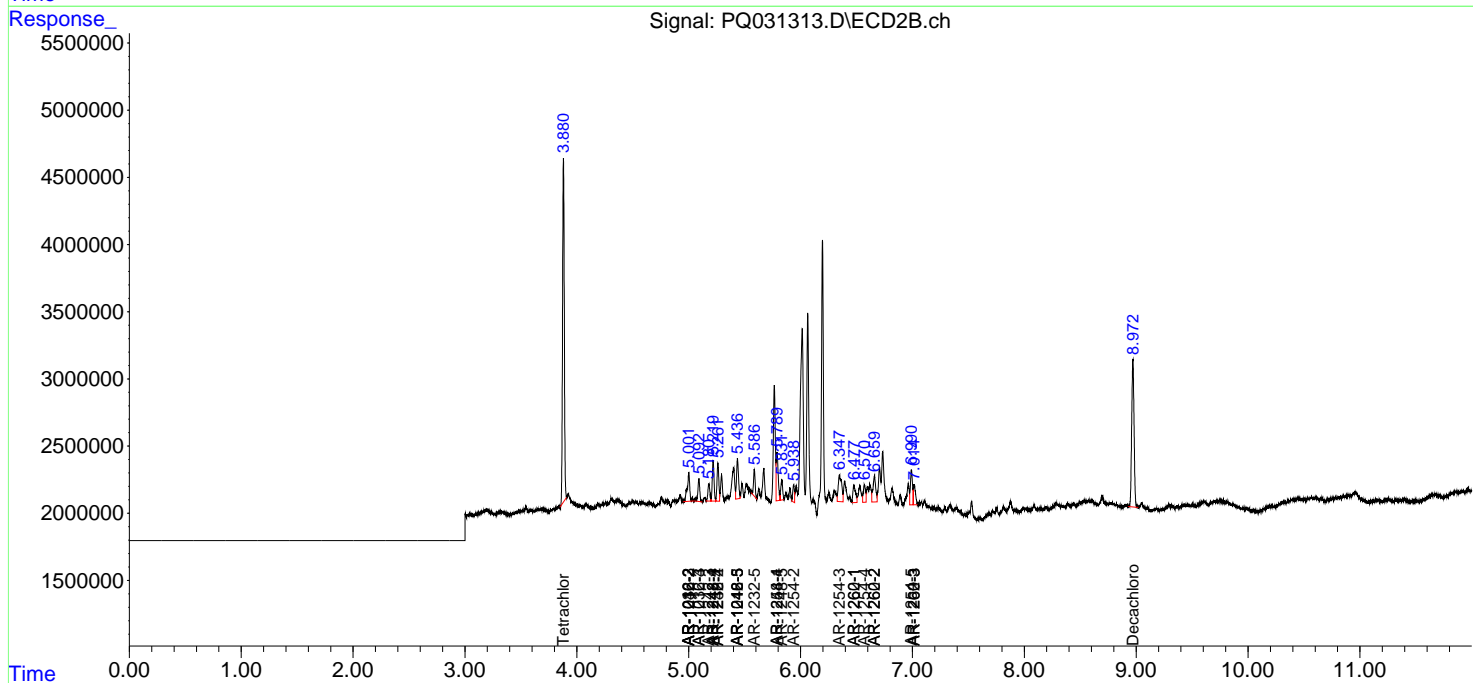
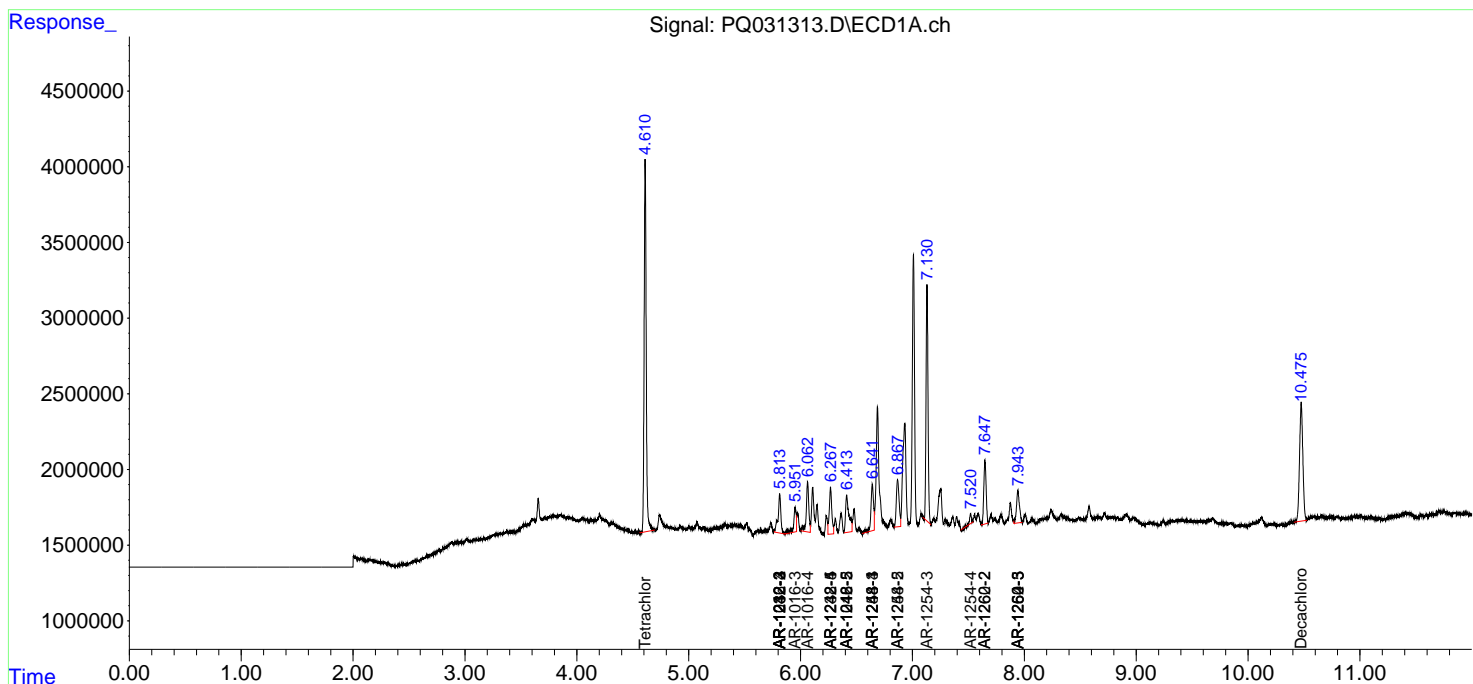
(f)=RT Delta > 1/2 Window (#)=Amounts differ by > 25% (m)=manual int.

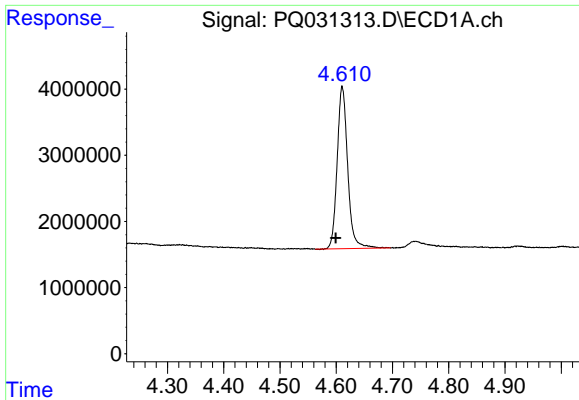
Data Path : Z:\pestpcbsrv\HPCHEM1\ECD_Q\Data\PQ082218\
 Data File : PQ031313.D
 Signal(s) : Signal #1: ECD1A.ch Signal #2: ECD2B.ch
 Acq On : 22 Aug 2018 11:08
 Operator : SM\SJ
 Sample : J4555-03RE
 Misc :
 ALS Vial : 9 Sample Multiplier: 1

Instrument :
 ECD_Q
 ClientSampled :

Integration File signal 1: autoint1.e
 Integration File signal 2: autoint2.e
 Quant Time: Aug 23 04:09:58 2018
 Quant Method : Z:\pestpcbsrv\HPCHEM1\ECD_Q\Method\PQ082018.M
 Quant Title : GC EXTRACTABLES
 QLast Update : Wed Aug 22 08:49:07 2018
 Response via : Initial Calibration
 Integrator: ChemStation

Volume Inj. : 2 µl
 Signal #1 Phase : ZB-MR1 Signal #2 Phase: ZB-MR2
 Signal #1 Info : 30Mx0.32mmx 0.50µ Signal #2 Info : 30M x 0.32mm x 0.25µm

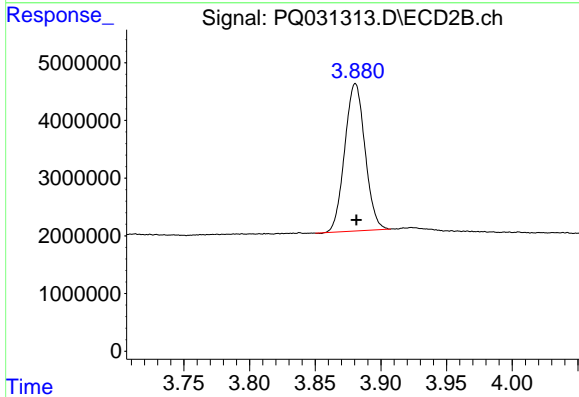




#1 Tetrachloro-m-xylene

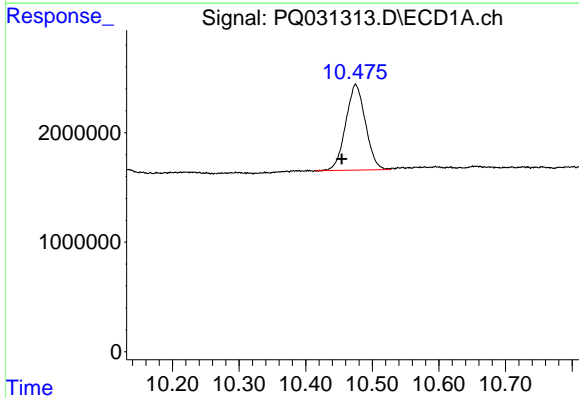
R.T.: 4.611 min
Delta R.T.: 0.012 min
Response: 31906012
Conc: 15.33 ng/ml

Instrument :
ECD_Q
ClientSampleId :



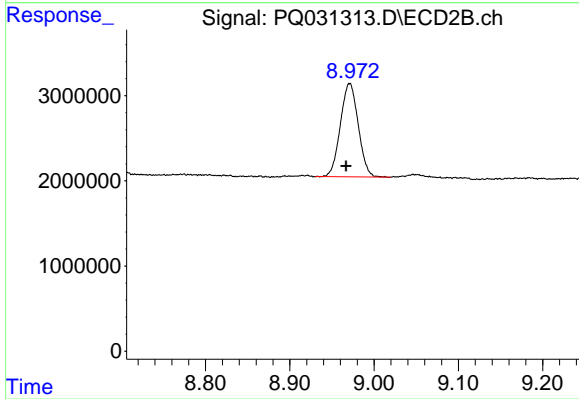
#1 Tetrachloro-m-xylene

R.T.: 3.881 min
Delta R.T.: 0.000 min
Response: 27429133
Conc: 15.32 ng/ml



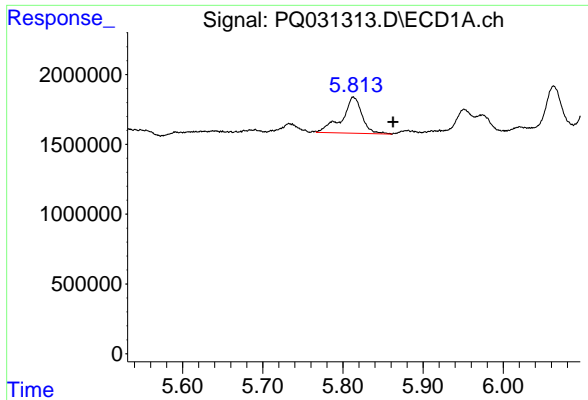
#2 Decachlorobiphenyl

R.T.: 10.475 min
Delta R.T.: 0.021 min
Response: 16097970
Conc: 8.53 ng/ml



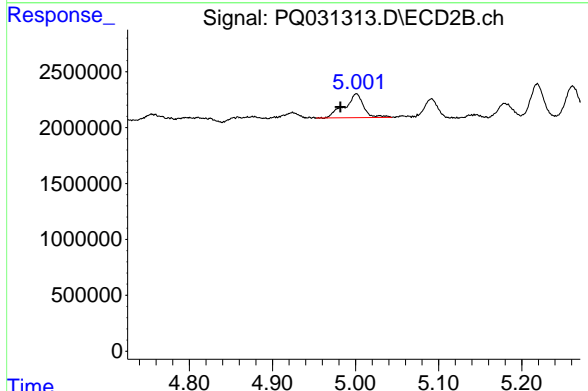
#2 Decachlorobiphenyl

R.T.: 8.971 min
Delta R.T.: 0.004 min
Response: 16167936
Conc: 8.50 ng/ml

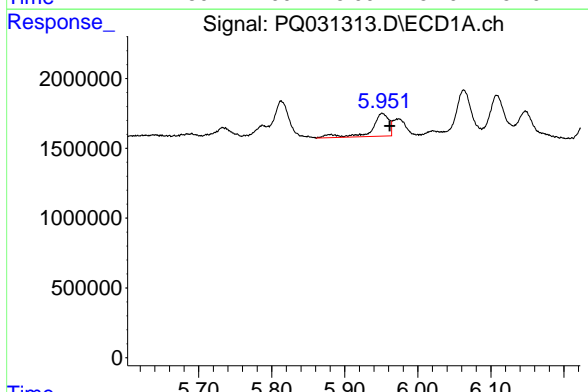


#4 AR-1016-2
 R.T.: 5.813 min
 Delta R.T.: -0.049 min
 Response: 4491924
 Conc: 70.92 ng/ml

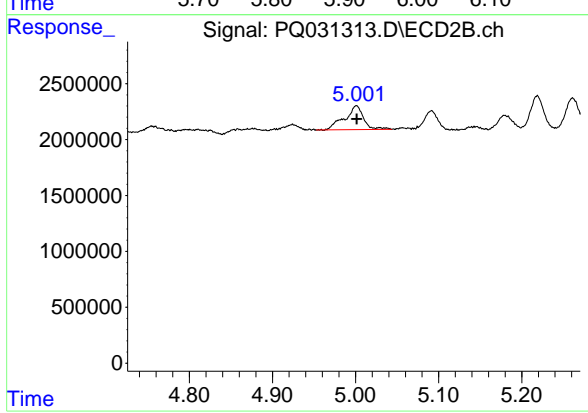
Instrument :
 ECD_Q
 ClientSampleId :



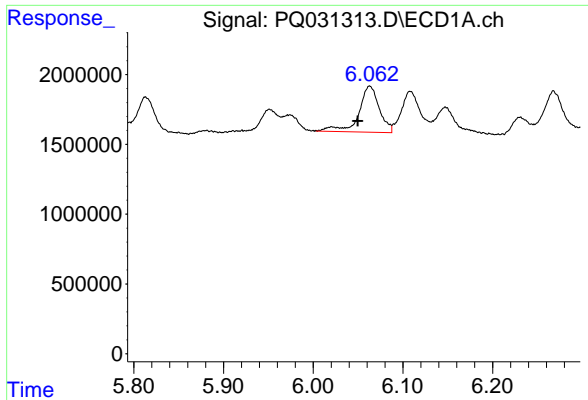
#4 AR-1016-2
 R.T.: 5.001 min
 Delta R.T.: 0.019 min
 Response: 3380674
 Conc: 54.27 ng/ml



#5 AR-1016-3
 R.T.: 5.951 min
 Delta R.T.: -0.010 min
 Response: 2628093
 Conc: 51.36 ng/ml

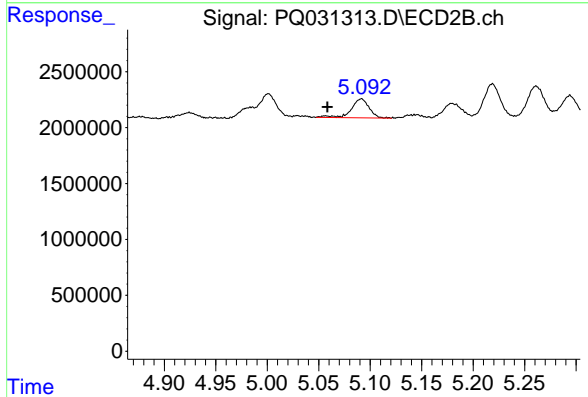


#5 AR-1016-3
 R.T.: 5.001 min
 Delta R.T.: 0.000 min
 Response: 3380674
 Conc: 37.85 ng/ml

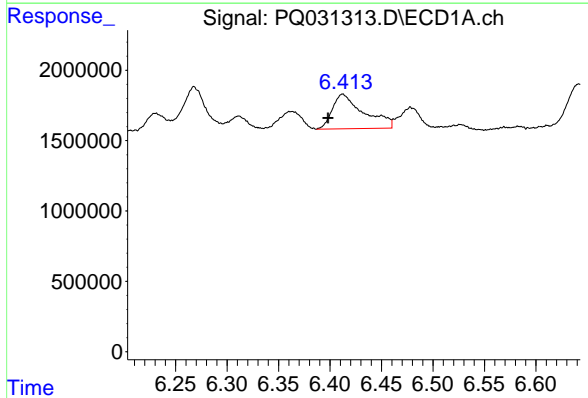


#6 AR-1016-4
 R.T.: 6.063 min
 Delta R.T.: 0.013 min
 Response: 5223570
 Conc: 120.29 ng/ml

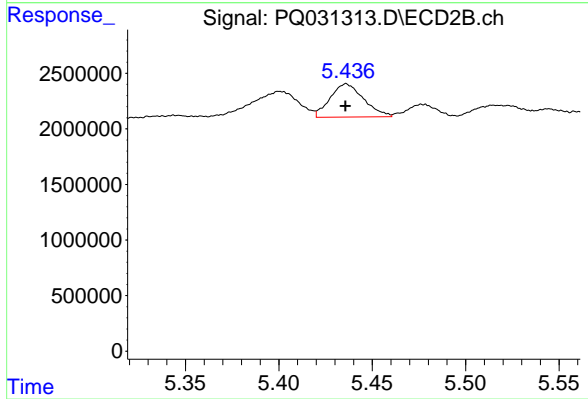
Instrument :
 ECD_Q
 ClientSampled :



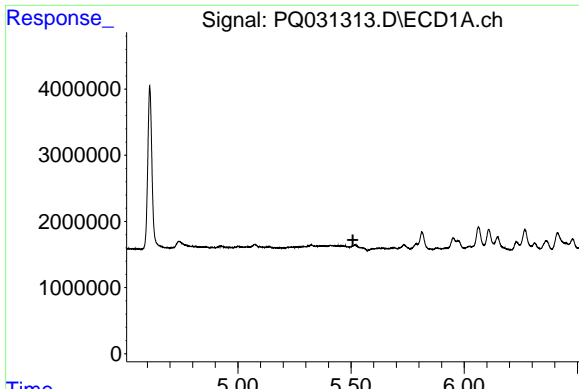
#6 AR-1016-4
 R.T.: 5.091 min
 Delta R.T.: 0.033 min
 Response: 2042151
 Conc: 34.08 ng/ml



#7 AR-1016-5
 R.T.: 6.412 min
 Delta R.T.: 0.014 min
 Response: 5210695
 Conc: 94.26 ng/ml



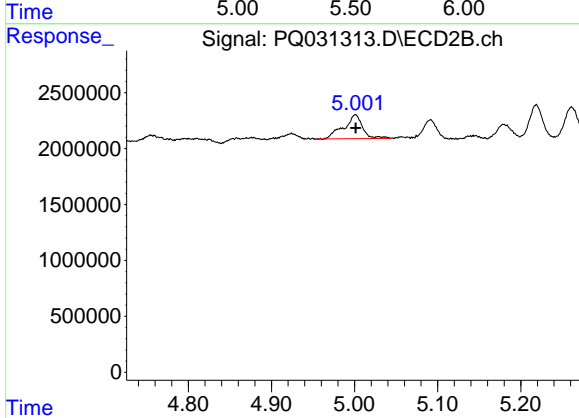
#7 AR-1016-5
 R.T.: 5.436 min
 Delta R.T.: 0.000 min
 Response: 3725264
 Conc: 73.22 ng/ml



#12 AR-1232-2

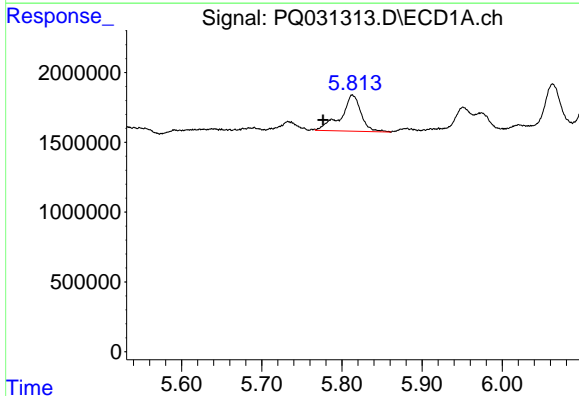
R.T.: 0.000 min
 Exp R.T.: 5.508 min
 Response: 0
 Conc: N.D.

Instrument :
 ECD_Q
 ClientSampled :



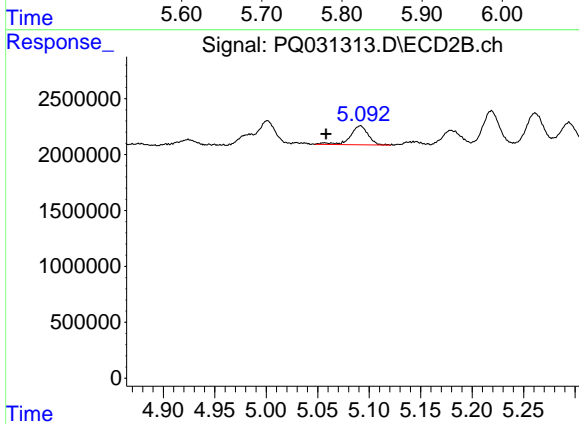
#12 AR-1232-2

R.T.: 5.001 min
 Delta R.T.: 0.000 min
 Response: 3380674
 Conc: 101.55 ng/ml



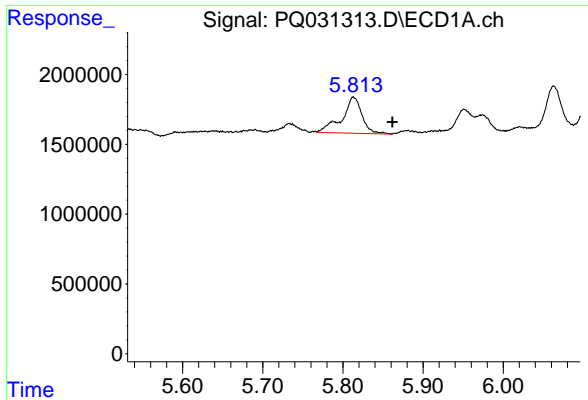
#13 AR-1232-3

R.T.: 5.813 min
 Delta R.T.: 0.036 min
 Response: 4491924
 Conc: 171.62 ng/ml



#13 AR-1232-3

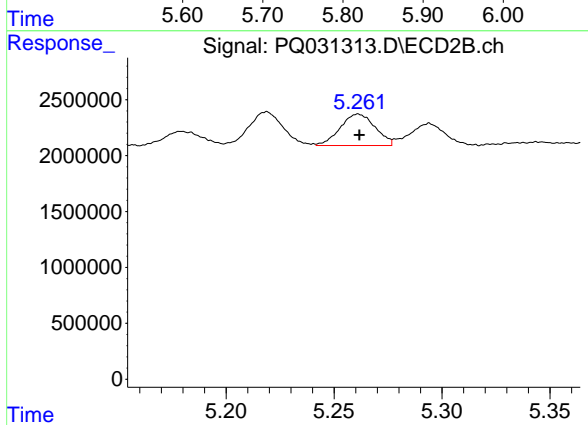
R.T.: 5.091 min
 Delta R.T.: 0.033 min
 Response: 2042151
 Conc: 88.26 ng/ml



#14 AR-1232-4

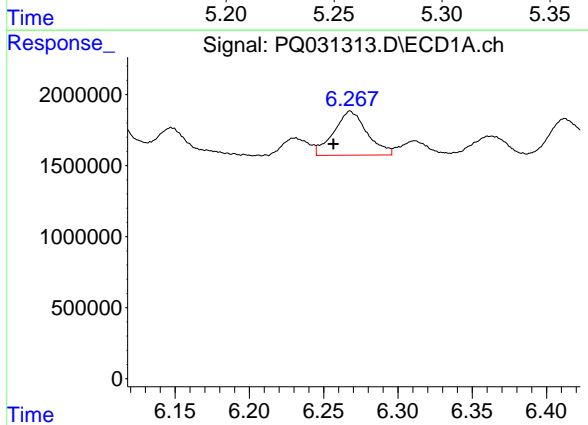
R.T.: 5.813 min
 Delta R.T.: -0.049 min
 Response: 4491924
 Conc: 175.24 ng/ml

Instrument :
 ECD_Q
 ClientSampleId :



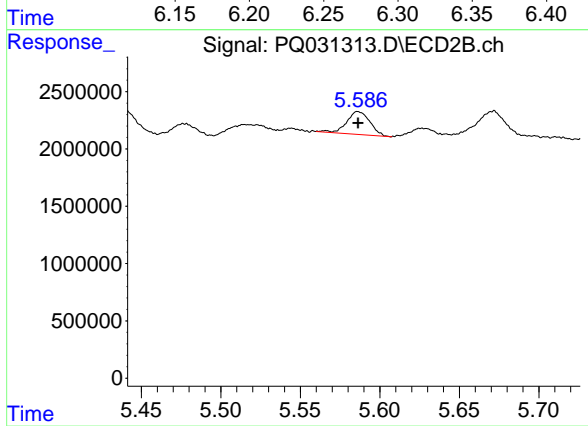
#14 AR-1232-4

R.T.: 5.261 min
 Delta R.T.: 0.000 min
 Response: 3170323
 Conc: 196.86 ng/ml



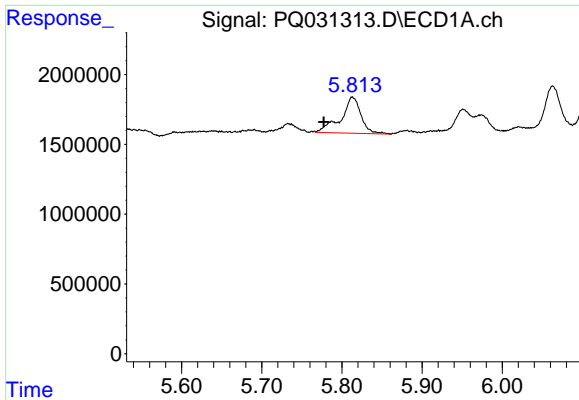
#15 AR-1232-5

R.T.: 6.268 min
 Delta R.T.: 0.011 min
 Response: 4840899
 Conc: 266.17 ng/ml



#15 AR-1232-5

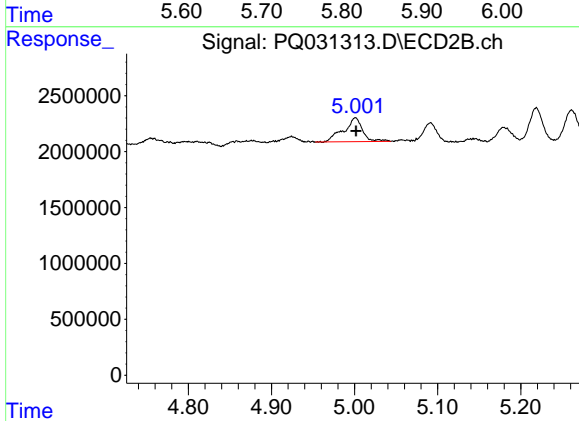
R.T.: 5.586 min
 Delta R.T.: 0.000 min
 Response: 2018141
 Conc: 107.07 ng/ml



#17 AR-1242-2

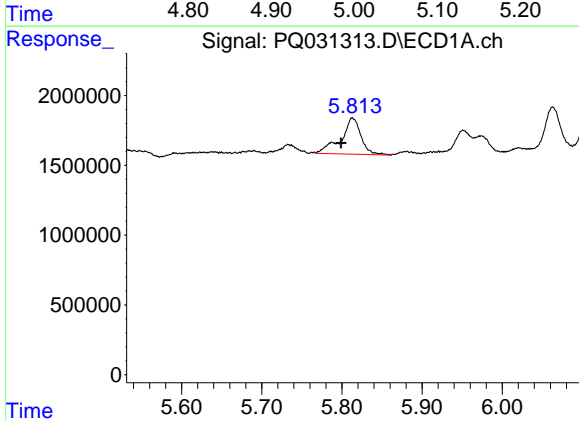
R.T.: 5.813 min
 Delta R.T.: 0.036 min
 Response: 4491924
 Conc: 96.56 ng/ml

Instrument :
 ECD_Q
 ClientSampled :



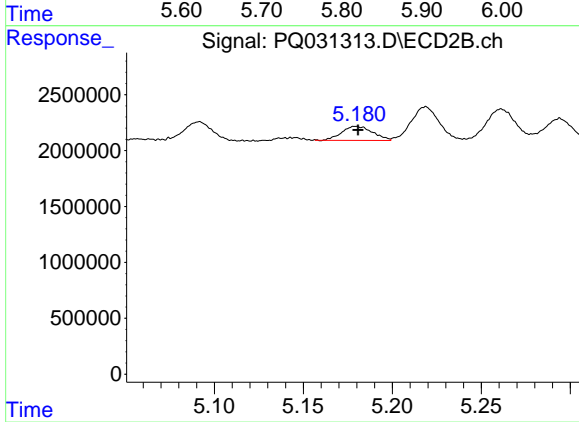
#17 AR-1242-2

R.T.: 5.001 min
 Delta R.T.: -0.001 min
 Response: 3380674
 Conc: 56.72 ng/ml



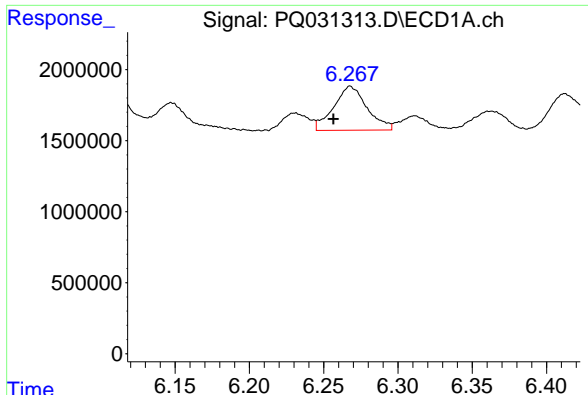
#18 AR-1242-3

R.T.: 5.813 min
 Delta R.T.: 0.014 min
 Response: 4491924
 Conc: 65.37 ng/ml



#18 AR-1242-3

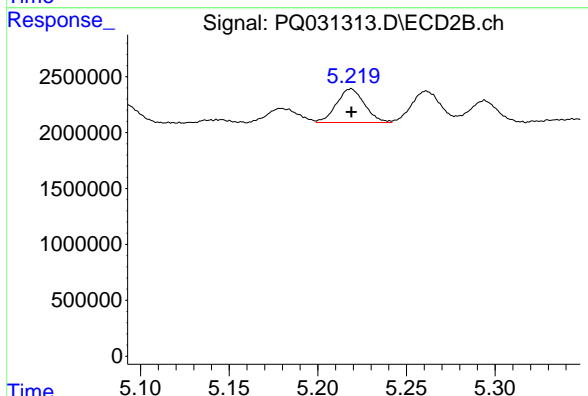
R.T.: 5.179 min
 Delta R.T.: -0.001 min
 Response: 1524815
 Conc: 48.06 ng/ml



#19 AR-1242-4

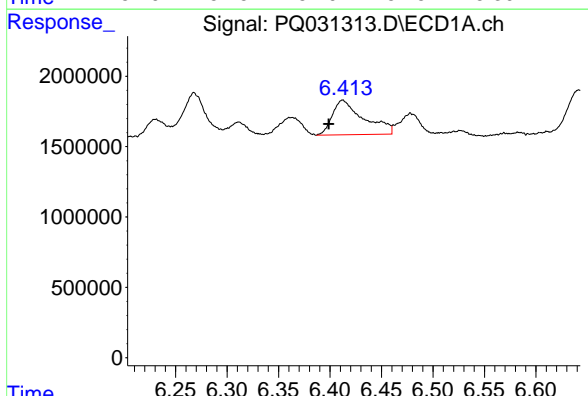
R.T.: 6.268 min
 Delta R.T.: 0.011 min
 Response: 4840899
 Conc: 135.35 ng/ml

Instrument :
 ECD_Q
 ClientSampleId :



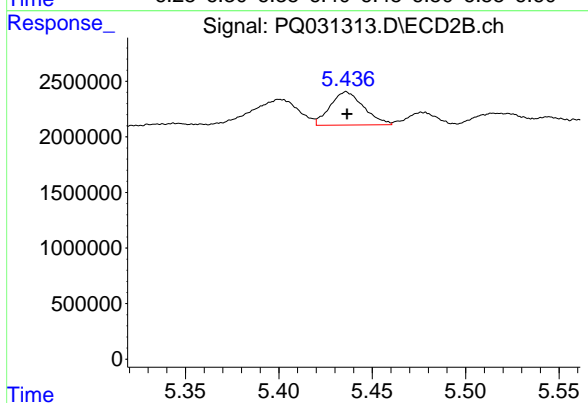
#19 AR-1242-4

R.T.: 5.219 min
 Delta R.T.: 0.000 min
 Response: 3316612
 Conc: 133.80 ng/ml



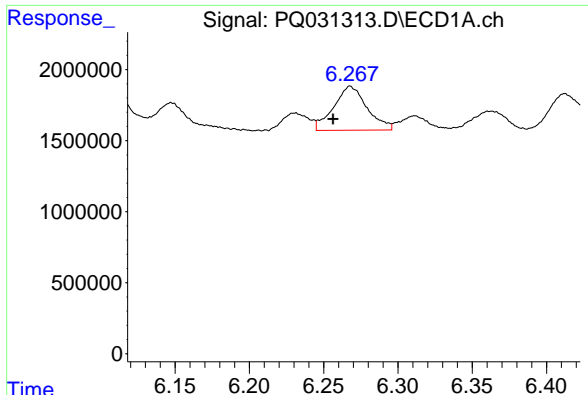
#20 AR-1242-5

R.T.: 6.412 min
 Delta R.T.: 0.014 min
 Response: 5210695
 Conc: 133.78 ng/ml



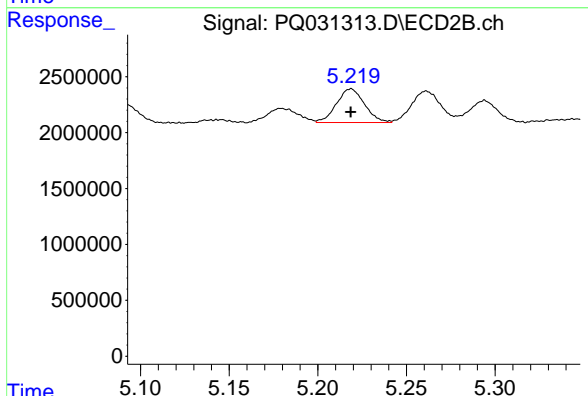
#20 AR-1242-5

R.T.: 5.436 min
 Delta R.T.: 0.000 min
 Response: 3725264
 Conc: 107.41 ng/ml

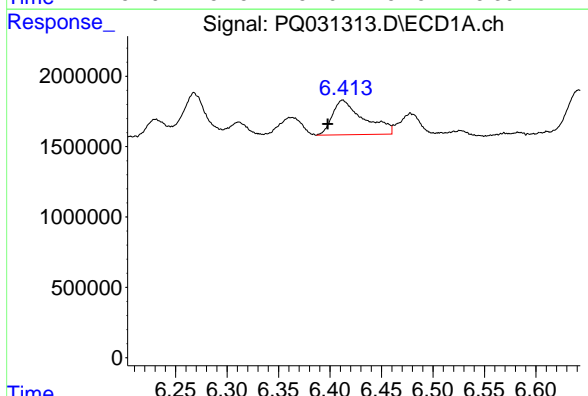


#21 AR-1248-1
 R.T.: 6.268 min
 Delta R.T.: 0.012 min
 Response: 4840899
 Conc: 77.48 ng/ml

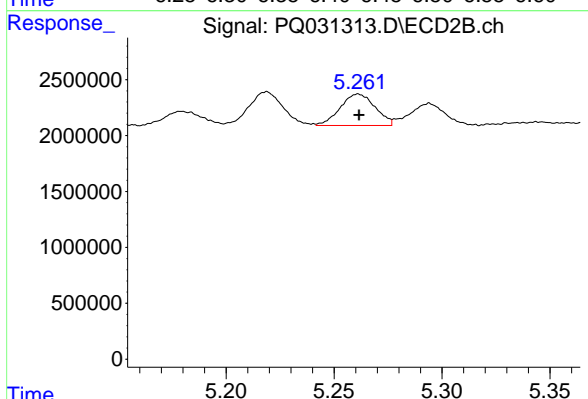
Instrument :
 ECD_Q
 ClientSampleId :



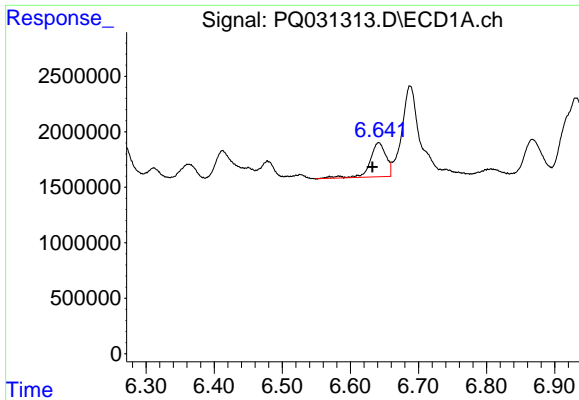
#21 AR-1248-1
 R.T.: 5.219 min
 Delta R.T.: 0.000 min
 Response: 3316612
 Conc: 69.35 ng/ml



#22 AR-1248-2
 R.T.: 6.412 min
 Delta R.T.: 0.015 min
 Response: 5210695
 Conc: 99.60 ng/ml



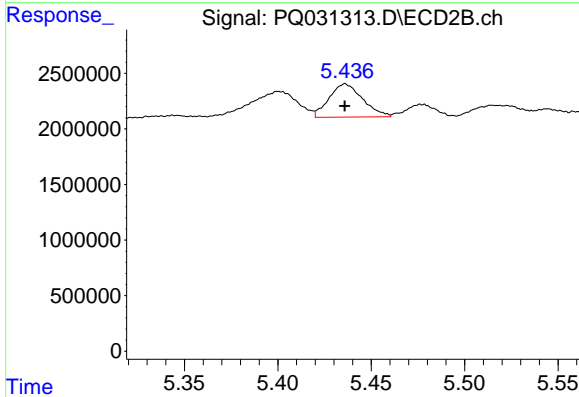
#22 AR-1248-2
 R.T.: 5.261 min
 Delta R.T.: 0.000 min
 Response: 3170323
 Conc: 64.95 ng/ml



#23 AR-1248-3

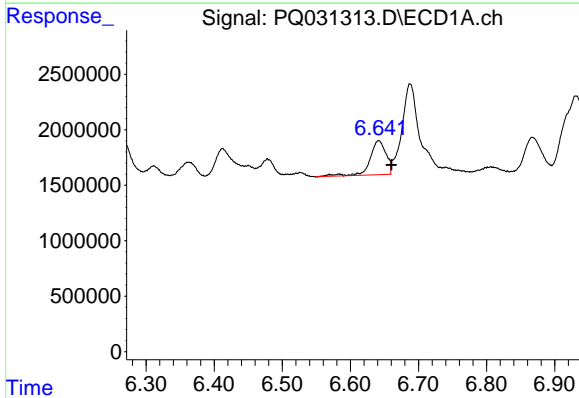
R.T.: 6.642 min
 Delta R.T.: 0.009 min
 Response: 4962353
 Conc: 91.32 ng/ml

Instrument :
 ECD_Q
 ClientSampleId :



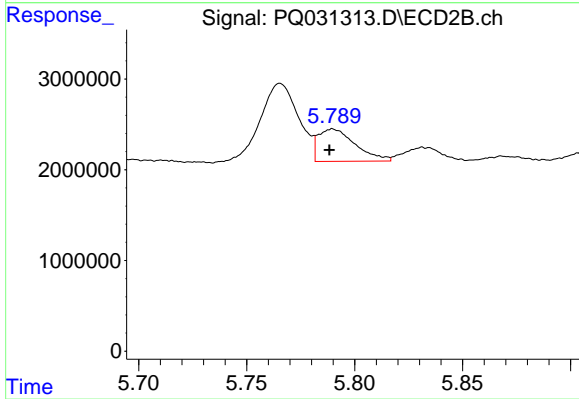
#23 AR-1248-3

R.T.: 5.436 min
 Delta R.T.: 0.000 min
 Response: 3725264
 Conc: 62.95 ng/ml



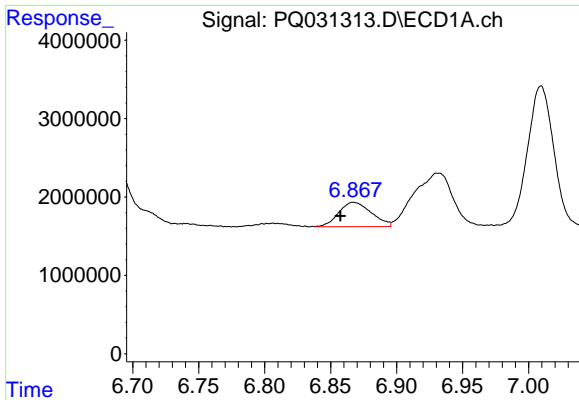
#24 AR-1248-4

R.T.: 6.642 min
 Delta R.T.: -0.019 min
 Response: 4962353
 Conc: 68.87 ng/ml



#24 AR-1248-4

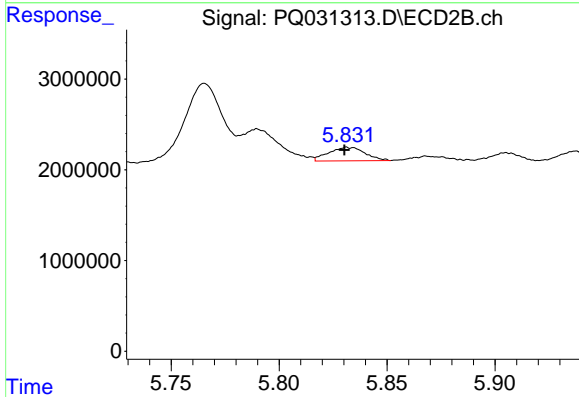
R.T.: 5.790 min
 Delta R.T.: 0.002 min
 Response: 4266466
 Conc: 48.03 ng/ml



#25 AR-1248-5

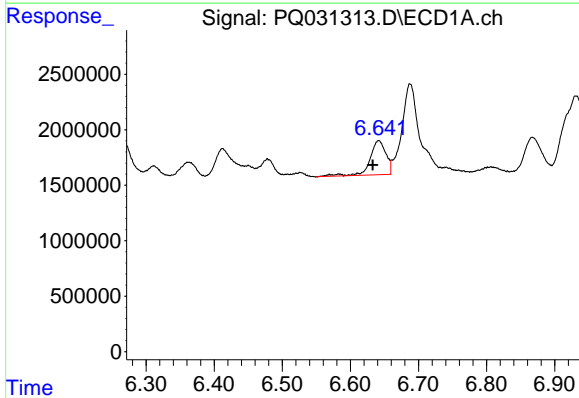
R.T.: 6.867 min
 Delta R.T.: 0.010 min
 Response: 5382032
 Conc: 74.83 ng/ml

Instrument :
 ECD_Q
 ClientSampleId :



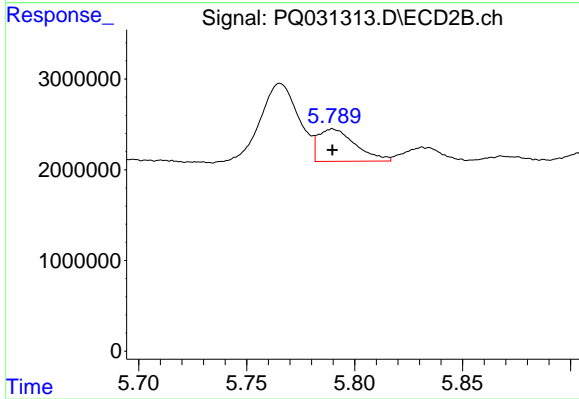
#25 AR-1248-5

R.T.: 5.832 min
 Delta R.T.: 0.002 min
 Response: 1747362
 Conc: 28.87 ng/ml



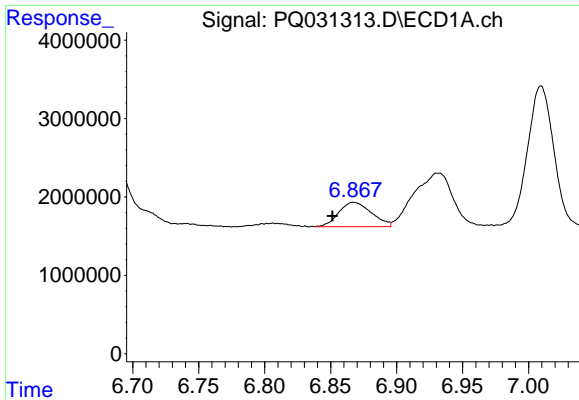
#26 AR-1254-1

R.T.: 6.642 min
 Delta R.T.: 0.009 min
 Response: 4962353
 Conc: 59.00 ng/ml



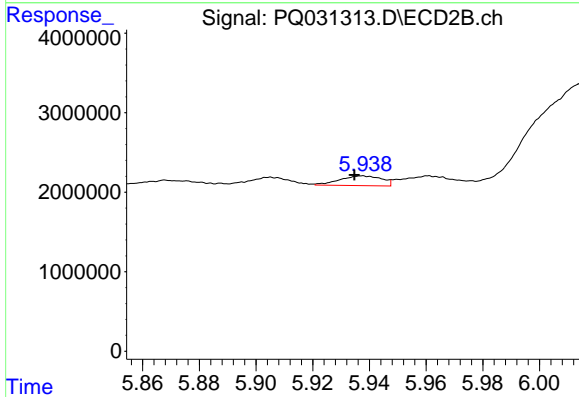
#26 AR-1254-1

R.T.: 5.790 min
 Delta R.T.: 0.000 min
 Response: 4266466
 Conc: 39.75 ng/ml

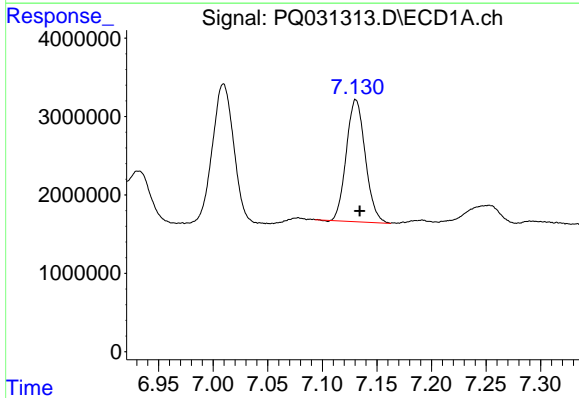


#27 AR-1254-2
 R.T.: 6.867 min
 Delta R.T.: 0.016 min
 Response: 5382032
 Conc: 40.60 ng/ml

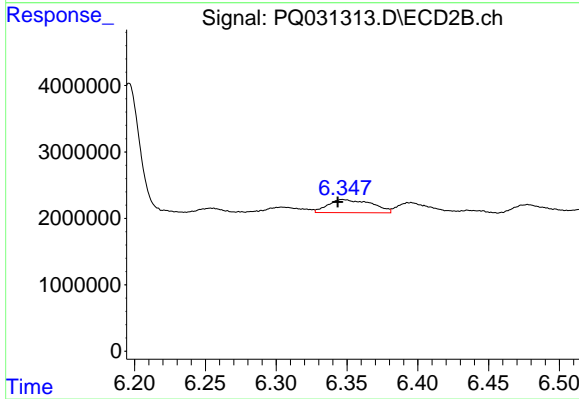
Instrument :
 ECD_Q
 ClientSampled :



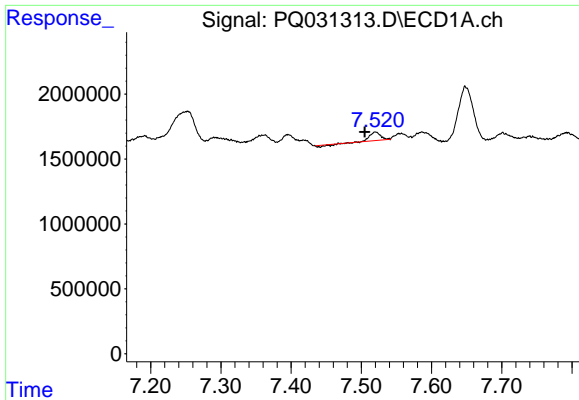
#27 AR-1254-2
 R.T.: 5.938 min
 Delta R.T.: 0.003 min
 Response: 1252044
 Conc: 13.32 ng/ml



#28 AR-1254-3
 R.T.: 7.131 min
 Delta R.T.: -0.003 min
 Response: 18873102
 Conc: 233.98 ng/ml



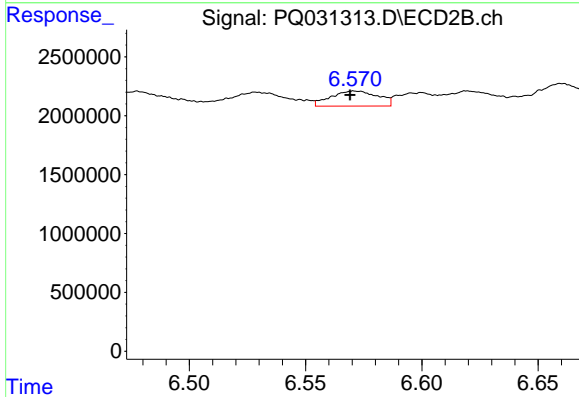
#28 AR-1254-3
 R.T.: 6.347 min
 Delta R.T.: 0.004 min
 Response: 4205229
 Conc: 26.27 ng/ml



#29 AR-1254-4

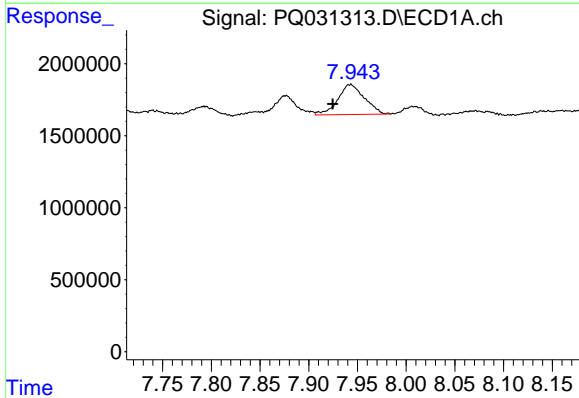
R.T.: 7.520 min
 Delta R.T.: 0.015 min
 Response: 606141
 Conc: 5.68 ng/ml

Instrument :
 ECD_Q
 ClientSampled :



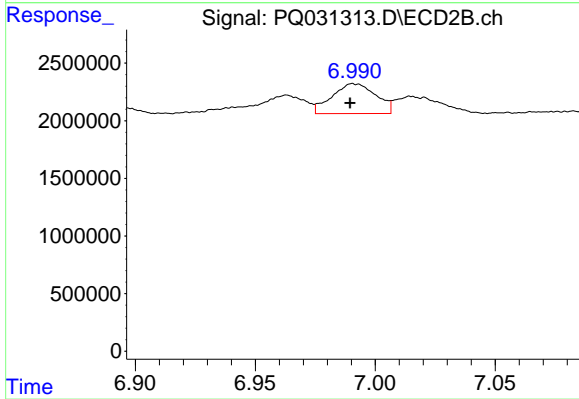
#29 AR-1254-4

R.T.: 6.571 min
 Delta R.T.: 0.002 min
 Response: 1809739
 Conc: 18.22 ng/ml



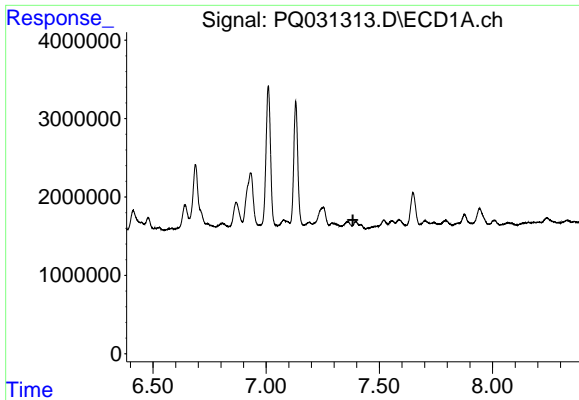
#30 AR-1254-5

R.T.: 7.943 min
 Delta R.T.: 0.018 min
 Response: 3957612
 Conc: 34.72 ng/ml



#30 AR-1254-5

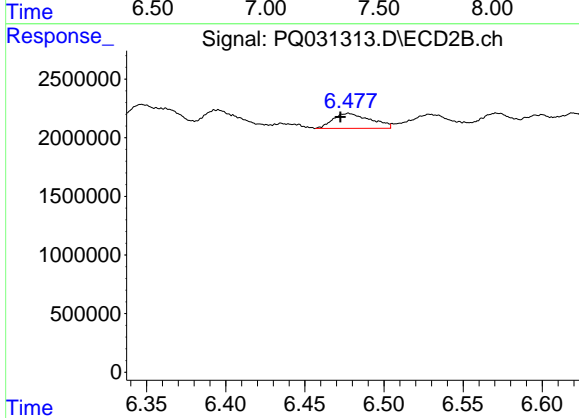
R.T.: 6.991 min
 Delta R.T.: 0.002 min
 Response: 3305612
 Conc: 23.76 ng/ml



#31 AR-1260-1

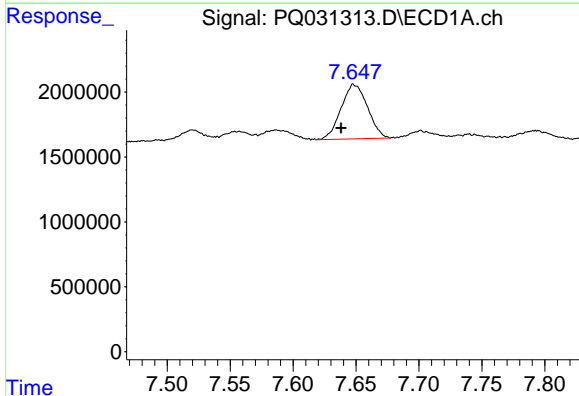
R.T.: 0.000 min
 Exp R.T.: 7.383 min
 Response: 0
 Conc: N.D.

Instrument :
 ECD_Q
 ClientSampled :



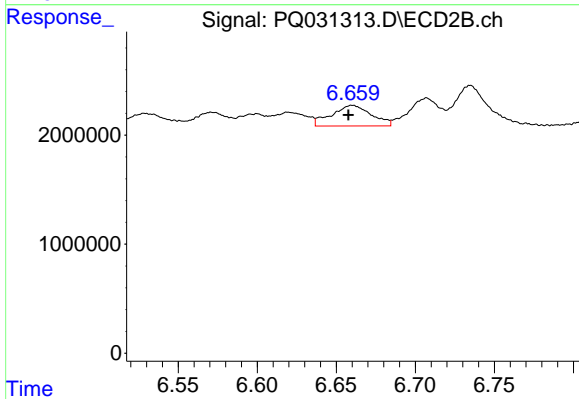
#31 AR-1260-1

R.T.: 6.478 min
 Delta R.T.: 0.005 min
 Response: 2125884
 Conc: 19.61 ng/ml



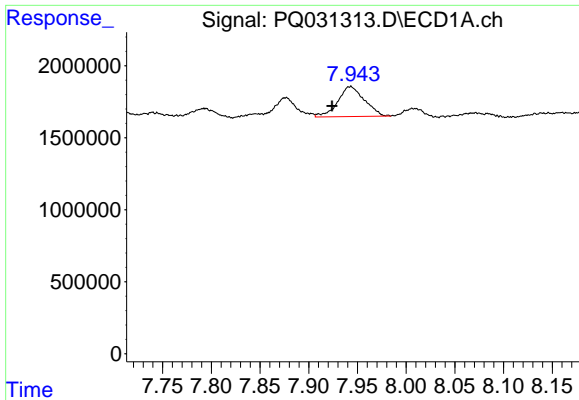
#32 AR-1260-2

R.T.: 7.648 min
 Delta R.T.: 0.010 min
 Response: 6133394
 Conc: 47.96 ng/ml



#32 AR-1260-2

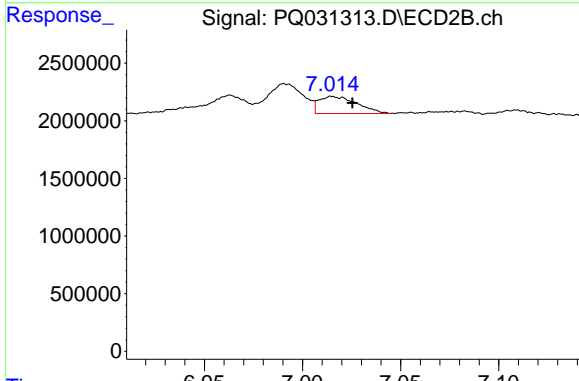
R.T.: 6.660 min
 Delta R.T.: 0.002 min
 Response: 3316401
 Conc: 25.41 ng/ml



#33 AR-1260-3

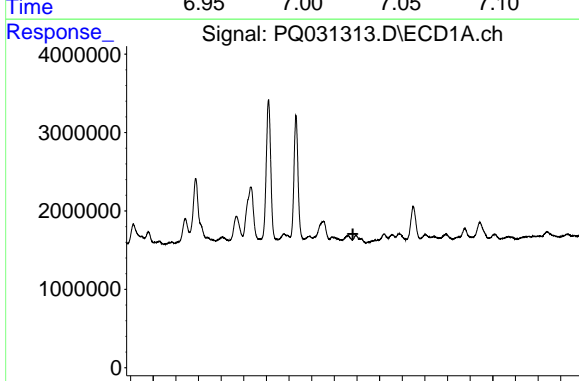
R.T.: 7.943 min
 Delta R.T.: 0.019 min
 Response: 3957612
 Conc: 26.47 ng/ml

Instrument :
 ECD_Q
 ClientSampleId :



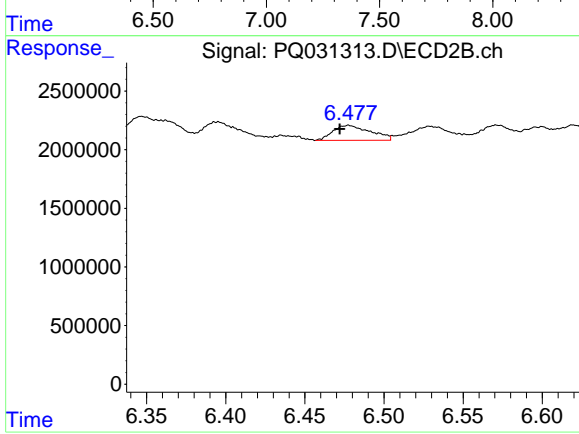
#33 AR-1260-3

R.T.: 7.015 min
 Delta R.T.: -0.010 min
 Response: 2005436
 Conc: 18.86 ng/ml



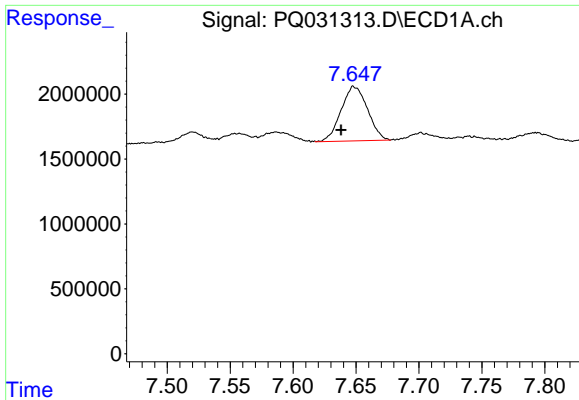
#36 AR-1262-1

R.T.: 0.000 min
 Exp R.T. : 7.382 min
 Response: 0
 Conc: N.D.



#36 AR-1262-1

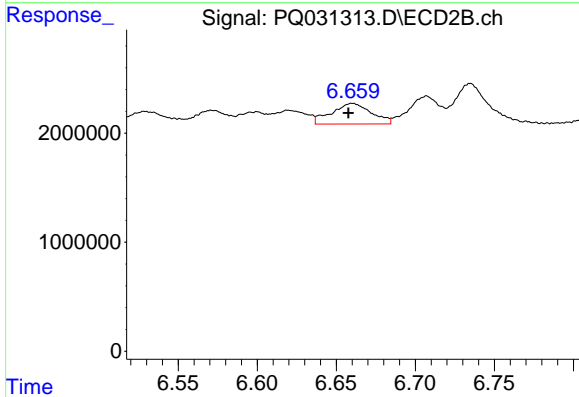
R.T.: 6.478 min
 Delta R.T.: 0.006 min
 Response: 2125884
 Conc: 24.48 ng/ml



#37 AR-1262-2

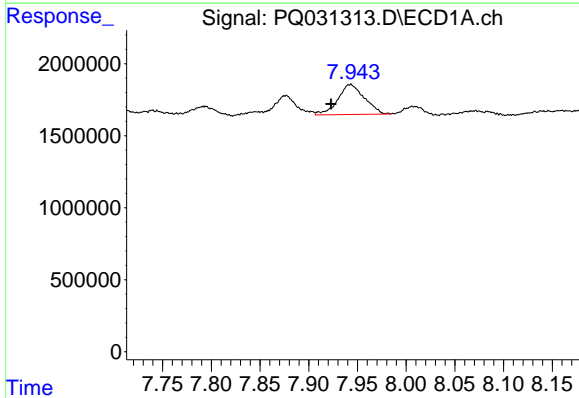
R.T.: 7.648 min
 Delta R.T.: 0.010 min
 Response: 6133394
 Conc: 59.53 ng/ml

Instrument :
 ECD_Q
 ClientSampleId :



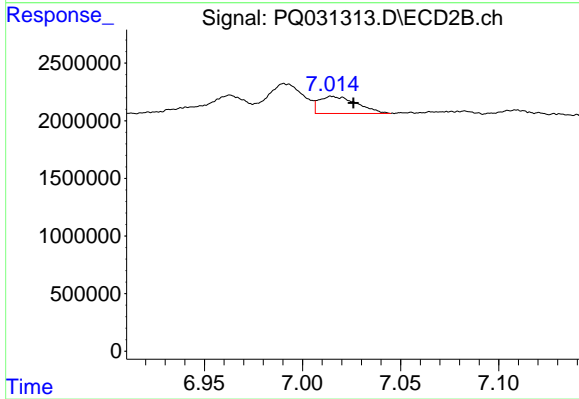
#37 AR-1262-2

R.T.: 6.660 min
 Delta R.T.: 0.003 min
 Response: 3316401
 Conc: 31.66 ng/ml



#38 AR-1262-3

R.T.: 7.943 min
 Delta R.T.: 0.020 min
 Response: 3957612
 Conc: 39.85 ng/ml



#38 AR-1262-3

R.T.: 7.015 min
 Delta R.T.: -0.011 min
 Response: 2005436
 Conc: 13.64 ng/ml