

Data Path : Z:\pestpcbsrv\HPCHEM1\ECD_Q\Data\PQ101518\
 Data File : PQ033140.D
 Signal(s) : Signal #1: ECD1A.ch Signal #2: ECD2B.ch
 Acq On : 15 Oct 2018 13:53
 Operator : SM\SJ
 Sample : AR1248CCC400
 Misc :
 ALS Vial : 5 Sample Multiplier: 1

Instrument :
 ECD_Q
 ClientSampleId :

Integration File signal 1: autoint1.e
 Integration File signal 2: autoint2.e
 Quant Time: Oct 16 01:54:02 2018
 Quant Method : Z:\pestpcbsrv\HPCHEM1\ECD_Q\Method\PQ100918CLP.M
 Quant Title : GC EXTRACTABLES
 QLast Update : Wed Oct 10 08:14:42 2018
 Response via : Initial Calibration
 Integrator: ChemStation

Volume Inj. : 1 µl
 Signal #1 Phase : ZB MR1 Signal #2 Phase: ZB MR2
 Signal #1 Info : 30Mx0.32mmx 0.5µm Signal #2 Info : 30M x 0.32mm x 0.25µm

Compound	RT#1	RT#2	Resp#1	Resp#2	ng/ml	ng/ml

System Monitoring Compounds						
1) SA Tetrachlo...	4.574	3.853	43600017	32745802	21.253	21.054
2) SA Decachlor...	10.408	8.906	72681480	61673450	38.450	38.365
Target Compounds						
3) L1 AR-1016-1	5.750	4.964	17602373	15234951	252.800	266.123
4) L1 AR-1016-2	5.773	4.964	21394476	15234951	207.697	191.193
5) L1 AR-1016-3	5.836	5.144	10796424	9781903	172.419	235.821 #
6) L1 AR-1016-4	5.935	5.182	11571378	19258002	228.948	562.050 #
7) L1 AR-1016-5	6.229	5.397	27270150	24204997	529.200	529.755
8) L2 AR-1221-1	0.000	4.063	0	115024	N.D.	6.224 #
9) L2 AR-1221-2	4.948	4.158	2405126	724990	146.092	54.811 #
10) L2 AR-1221-3	4.948	4.230	2405126	1993168	41.921	43.584
11) L3 AR-1232-1	4.948	4.230	2405126	1993168	54.177	57.598
12) L3 AR-1232-2	5.482	4.964	8133405	15234951	344.361	405.160
13) L3 AR-1232-3	5.773	5.144	21394476	9781903	447.493	499.439
14) L3 AR-1232-4	5.935	5.224	11571378	19633712	485.804	1143.941 #
15) L3 AR-1232-5	6.023	5.397	25693196	24204997	1440.672	1241.275
16) L4 AR-1242-1	5.750	4.964	17602373	15234951	294.962	313.101
17) L4 AR-1242-2	5.773	4.964	21394476	15234951	246.344	225.704
18) L4 AR-1242-3	5.836	5.144	10796424	9781903	206.477	267.042 #
19) L4 AR-1242-4	5.935	5.224	11571378	19633712	268.328	533.046 #
20) L4 AR-1242-5	6.674	5.749	29319714	34399921	594.752	716.075
21) L5 AR-1248-1	5.750	4.964	17602373	15234951	354.867	371.767
22) L5 AR-1248-2	6.023	5.182	25693196	19258002	349.319	350.532
23) L5 AR-1248-3	6.229	5.224	27270150	19633712	333.684	350.586
24) L5 AR-1248-4	6.634	5.397	30977938	24204997	330.709	350.955
25) L5 AR-1248-5	6.674	5.791	29319714	23394352	330.145	338.422
26) L6 AR-1254-1	6.606	5.749	24316733	34399921	245.371	305.340
27) L6 AR-1254-2	6.831	5.895	30487454	9600505	195.084	97.225 #
28) L6 AR-1254-3	7.194	6.301	17455510	18608724	102.870	111.972
29) L6 AR-1254-4	7.480	6.529	12144309	12368727	98.355	116.251
30) L6 AR-1254-5	7.899	6.946	2957489	3347961	22.341	22.793
31) L7 AR-1260-1	7.356	6.449	3866837	6235504	36.153	66.389 #
32) L7 AR-1260-2	7.609	6.616	2501456	2139886	19.810	18.366
33) L7 AR-1260-3	0.000	6.772	0	1867374	N.D.	17.316 #
34) L7 AR-1260-4	8.196	7.241	1572999	481818	15.539	6.268 #
35) L7 AR-1260-5	0.000	7.483	0	1407787	N.D.	7.328 #
36) L8 AR-1262-1	0.000	6.976	0	823693	N.D.	6.409 #
37) L8 AR-1262-2	0.000	7.483	0	1407787	N.D.	5.877 #
38) L8 AR-1262-3	0.000	7.767	0	904130	N.D.	9.706 #
39) L8 AR-1262-4	0.000	7.832	0	1375681	N.D.	7.902 #
40) L8 AR-1262-5	0.000	8.338	0	418064	N.D.	5.181 #
41) L9 AR-1268-1	0.000	7.767	0	904130	N.D.	2.644 #

Data Path : Z:\pestpcbsrv\HPCHEM1\ECD_Q\Data\PQ101518\
 Data File : PQ033140.D
 Signal(s) : Signal #1: ECD1A.ch Signal #2: ECD2B.ch
 Acq On : 15 Oct 2018 13:53
 Operator : SM\SJ
 Sample : AR1248CCC400
 Misc :
 ALS Vial : 5 Sample Multiplier: 1

Instrument :
 ECD_Q
 ClientSampleId :

Integration File signal 1: autoint1.e
 Integration File signal 2: autoint2.e
 Quant Time: Oct 16 01:54:02 2018
 Quant Method : Z:\pestpcbsrv\HPCHEM1\ECD_Q\Method\PQ100918CLP.M
 Quant Title : GC EXTRACTABLES
 QLast Update : Wed Oct 10 08:14:42 2018
 Response via : Initial Calibration
 Integrator: ChemStation

Volume Inj. : 1 µl
 Signal #1 Phase : ZB MR1 Signal #2 Phase: ZB MR2
 Signal #1 Info : 30Mx0.32mmx 0.5µm Signal #2 Info : 30M x 0.32mm x 0.25µm

	Compound	RT#1	RT#2	Resp#1	Resp#2	ng/ml	ng/ml
42)	L9 AR-1268-2	0.000	7.832	0	1375681	N.D.	4.452 #
43)	L9 AR-1268-3	0.000	8.032	0	1145459	N.D.	4.477 #
44)	L9 AR-1268-4	0.000	8.338	0	418064	N.D.	3.790 #
45)	L9 AR-1268-5	0.000	8.639	0	886134	N.D.	1.059 #

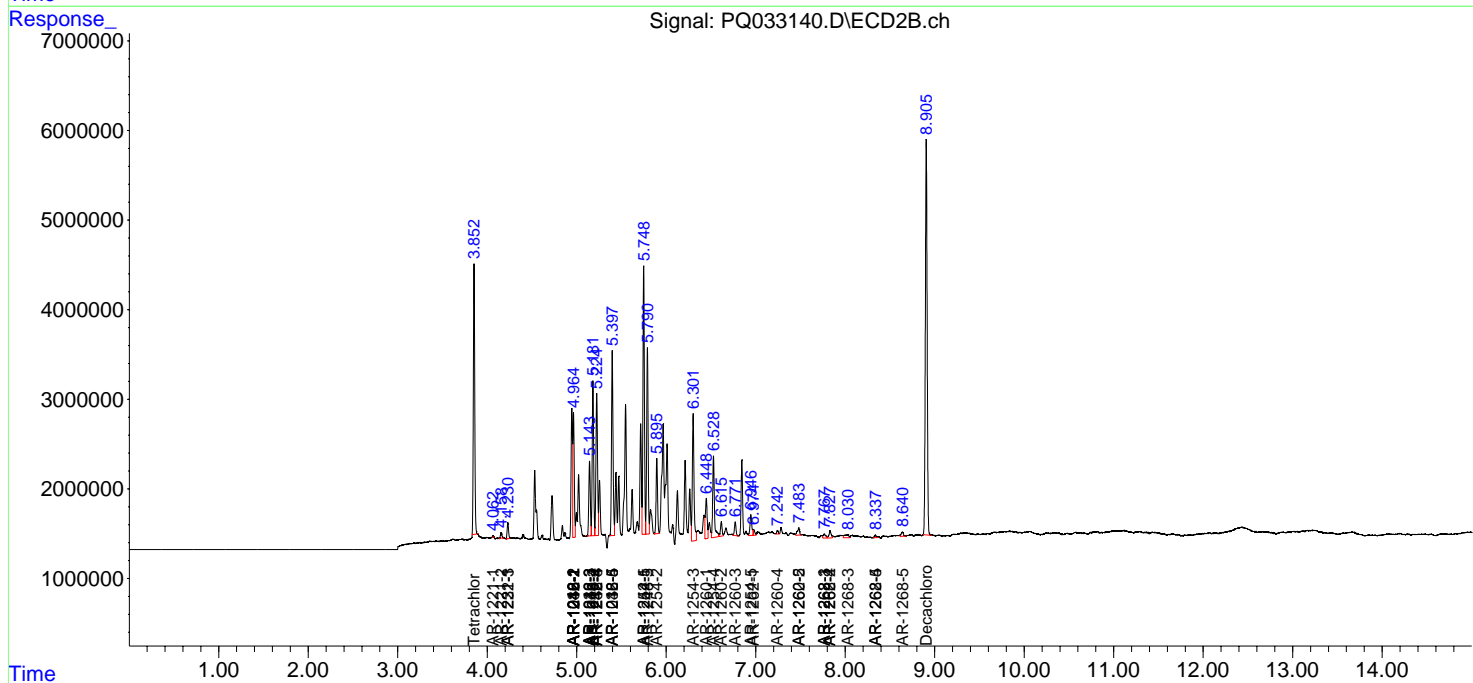
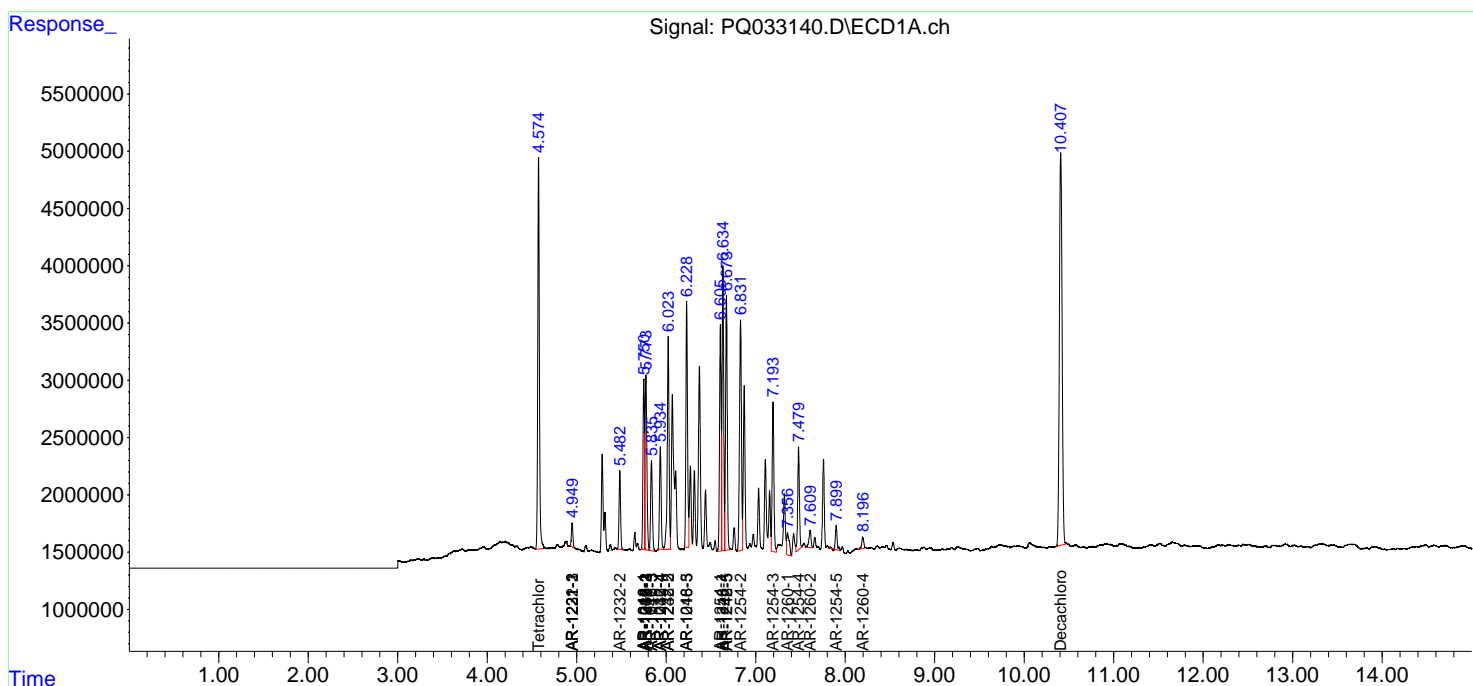
(f)=RT Delta > 1/2 Window (#)=Amounts differ by > 25% (m)=manual int.

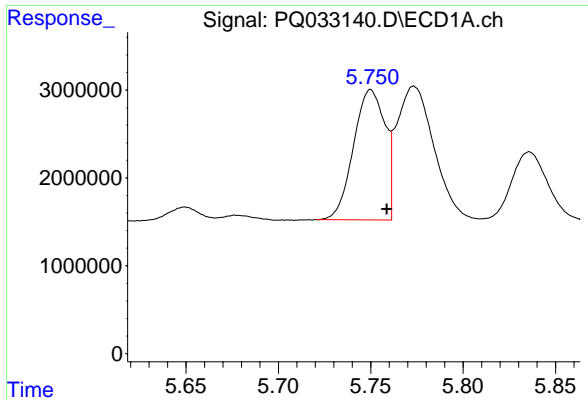
Data Path : Z:\pestpcbsrv\HPCHEM1\ECD_Q\Data\PQ101518\
 Data File : PQ033140.D
 Signal(s) : Signal #1: ECD1A.ch Signal #2: ECD2B.ch
 Acq On : 15 Oct 2018 13:53
 Operator : SM\SJ
 Sample : AR1248CCC400
 Misc :
 ALS Vial : 5 Sample Multiplier: 1

Instrument :
 ECD_Q
 ClientSampled :

Integration File signal 1: autoint1.e
 Integration File signal 2: autoint2.e
 Quant Time: Oct 16 01:54:02 2018
 Quant Method : Z:\pestpcbsrv\HPCHEM1\ECD_Q\Method\PQ100918CLP.M
 Quant Title : GC EXTRACTABLES
 QLast Update : Wed Oct 10 08:14:42 2018
 Response via : Initial Calibration
 Integrator: ChemStation

Volume Inj. : 1 µl
 Signal #1 Phase : ZB MR1 Signal #2 Phase: ZB MR2
 Signal #1 Info : 30Mx0.32mmx 0.5µm Signal #2 Info : 30M x 0.32mm x 0.25µm

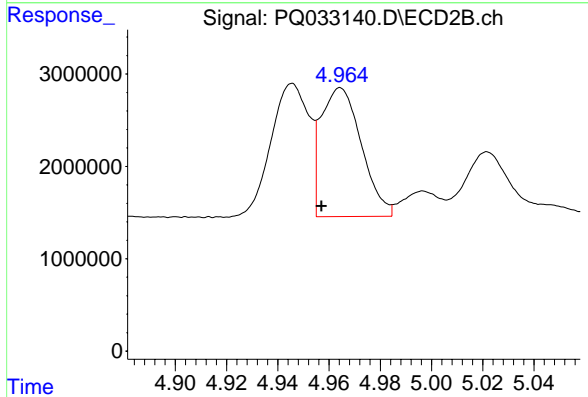




#3 AR-1016-1

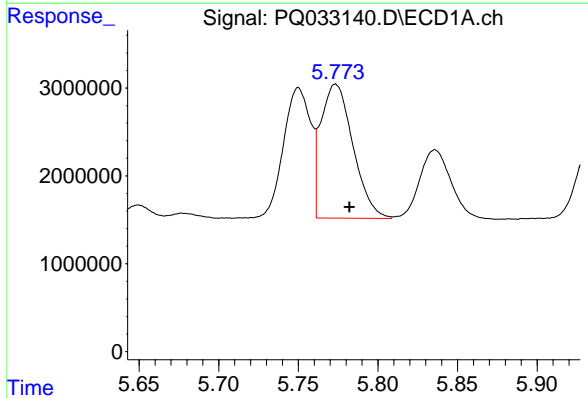
R.T.: 5.750 min
 Delta R.T.: -0.009 min
 Response: 17602373
 Conc: 252.80 ng/ml

Instrument :
 ECD_Q
 ClientSampleId :



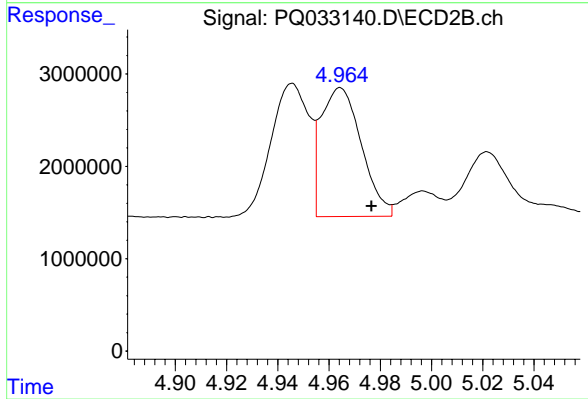
#3 AR-1016-1

R.T.: 4.964 min
 Delta R.T.: 0.008 min
 Response: 15234951
 Conc: 266.12 ng/ml



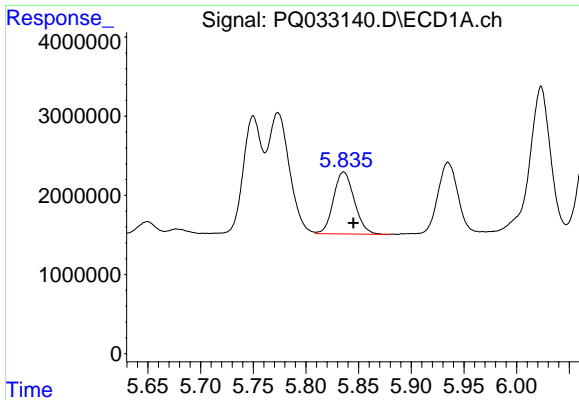
#4 AR-1016-2

R.T.: 5.773 min
 Delta R.T.: -0.009 min
 Response: 21394476
 Conc: 207.70 ng/ml



#4 AR-1016-2

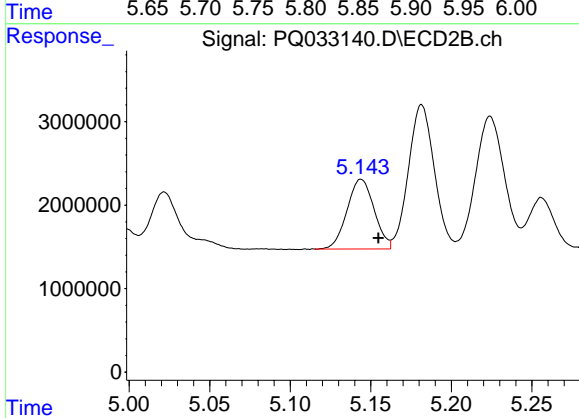
R.T.: 4.964 min
 Delta R.T.: -0.012 min
 Response: 15234951
 Conc: 191.19 ng/ml



#5 AR-1016-3

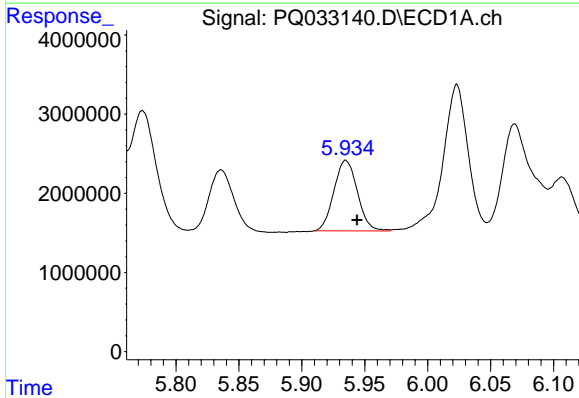
R.T.: 5.836 min
 Delta R.T.: -0.009 min
 Response: 10796424
 Conc: 172.42 ng/ml

Instrument :
 ECD_Q
 ClientSampled :



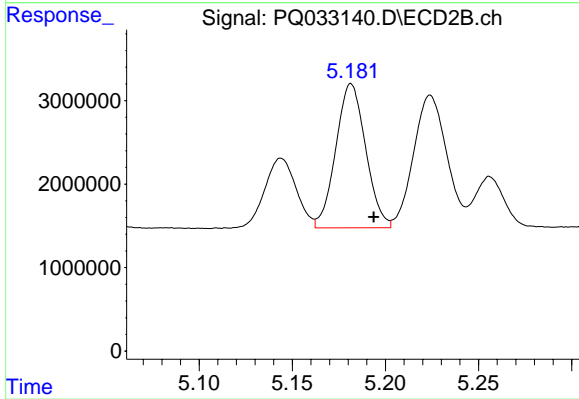
#5 AR-1016-3

R.T.: 5.144 min
 Delta R.T.: -0.011 min
 Response: 9781903
 Conc: 235.82 ng/ml



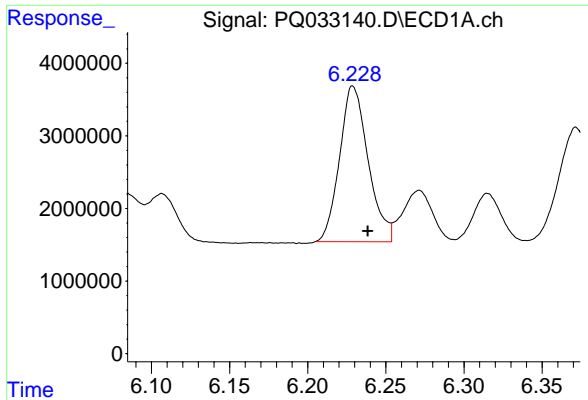
#6 AR-1016-4

R.T.: 5.935 min
 Delta R.T.: -0.009 min
 Response: 11571378
 Conc: 228.95 ng/ml



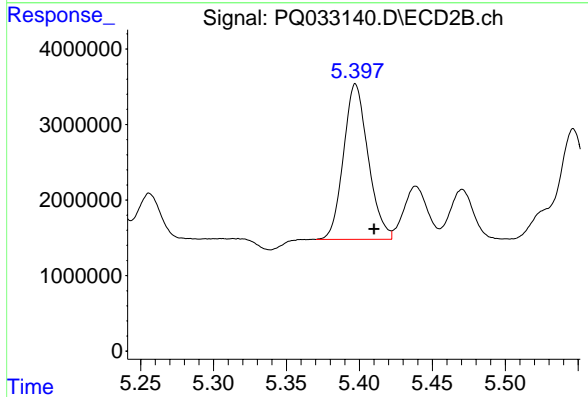
#6 AR-1016-4

R.T.: 5.182 min
 Delta R.T.: -0.012 min
 Response: 19258002
 Conc: 562.05 ng/ml

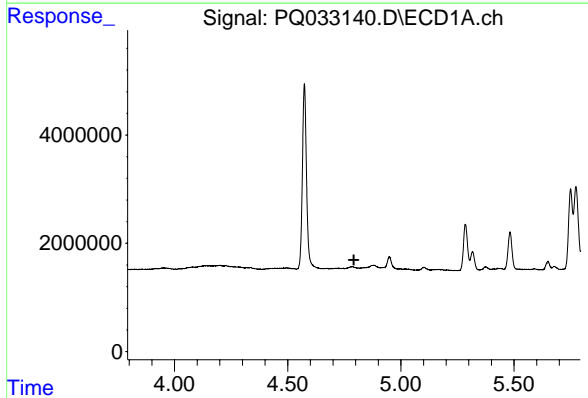


#7 AR-1016-5
 R.T.: 6.229 min
 Delta R.T.: -0.010 min
 Response: 27270150
 Conc: 529.20 ng/ml

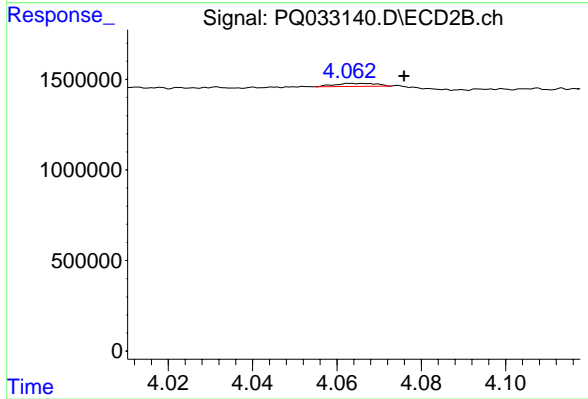
Instrument :
 ECD_Q
 ClientSampled :



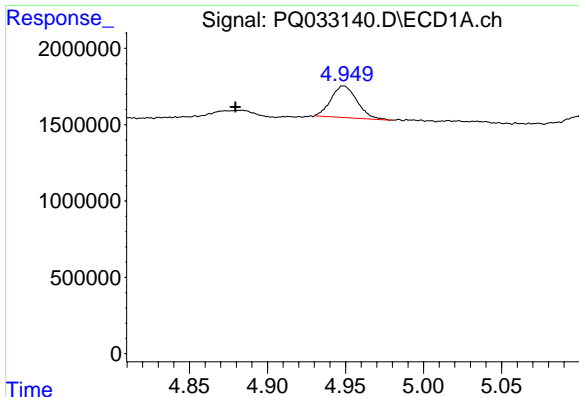
#7 AR-1016-5
 R.T.: 5.397 min
 Delta R.T.: -0.013 min
 Response: 24204997
 Conc: 529.75 ng/ml



#8 AR-1221-1
 R.T.: 0.000 min
 Exp R.T. : 4.792 min
 Response: 0
 Conc: N.D.



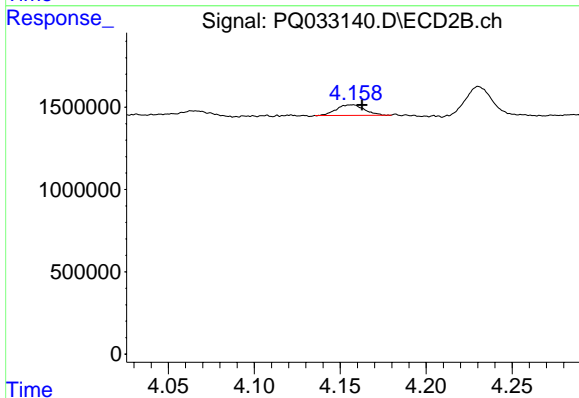
#8 AR-1221-1
 R.T.: 4.063 min
 Delta R.T.: -0.013 min
 Response: 115024
 Conc: 6.22 ng/ml



#9 AR-1221-2

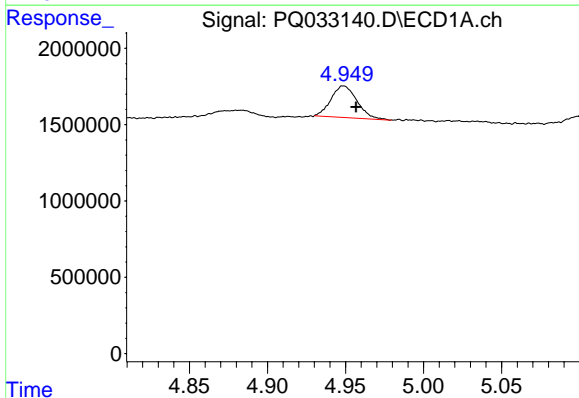
R.T.: 4.948 min
 Delta R.T.: 0.069 min
 Response: 2405126
 Conc: 146.09 ng/ml

Instrument :
 ECD_Q
 ClientSampleId :



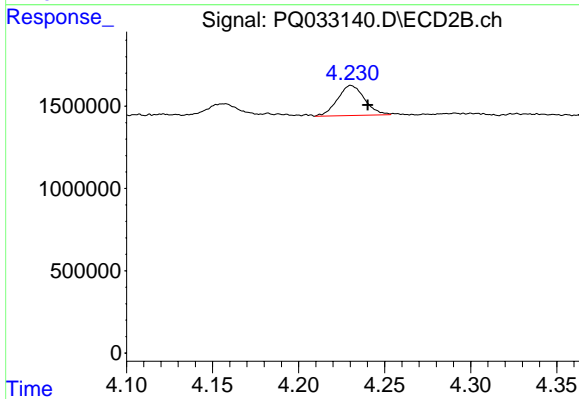
#9 AR-1221-2

R.T.: 4.158 min
 Delta R.T.: -0.005 min
 Response: 724990
 Conc: 54.81 ng/ml



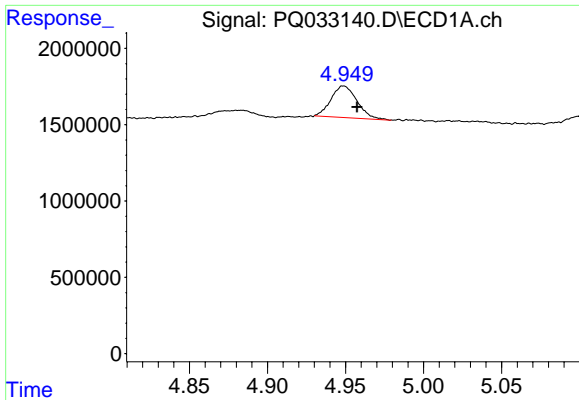
#10 AR-1221-3

R.T.: 4.948 min
 Delta R.T.: -0.009 min
 Response: 2405126
 Conc: 41.92 ng/ml



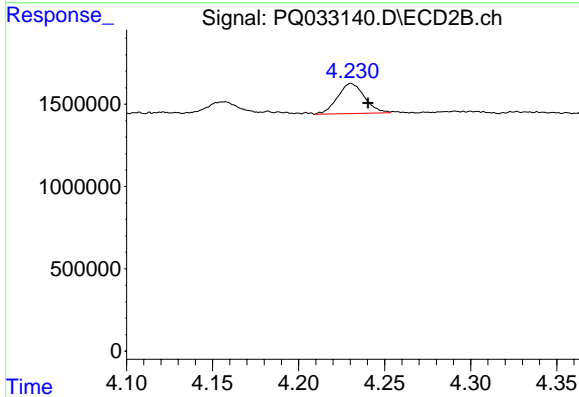
#10 AR-1221-3

R.T.: 4.230 min
 Delta R.T.: -0.010 min
 Response: 1993168
 Conc: 43.58 ng/ml

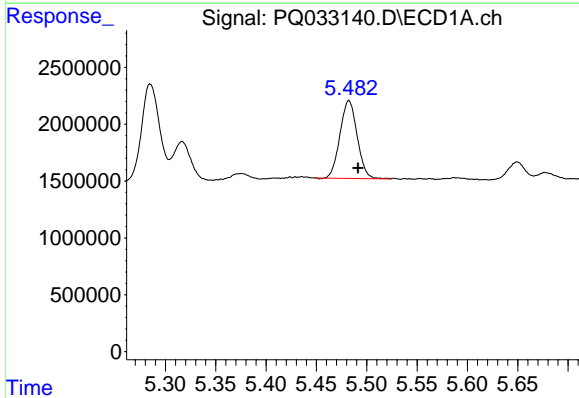


#11 AR-1232-1
 R.T.: 4.948 min
 Delta R.T.: -0.009 min
 Response: 2405126
 Conc: 54.18 ng/ml

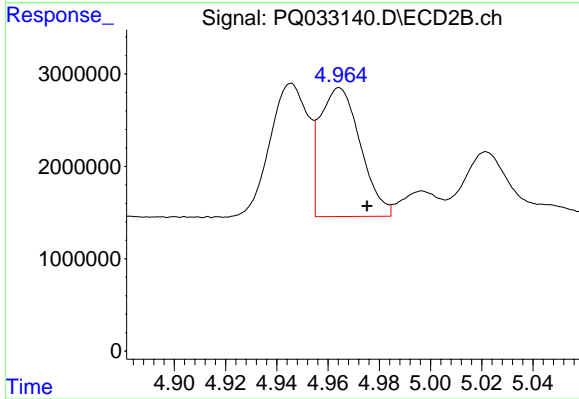
Instrument :
 ECD_Q
 ClientSampleId :



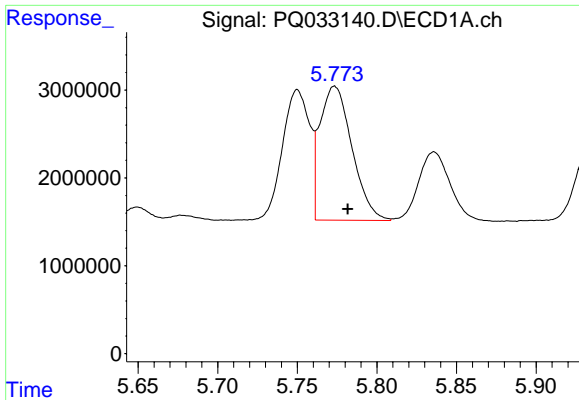
#11 AR-1232-1
 R.T.: 4.230 min
 Delta R.T.: -0.010 min
 Response: 1993168
 Conc: 57.60 ng/ml



#12 AR-1232-2
 R.T.: 5.482 min
 Delta R.T.: -0.009 min
 Response: 8133405
 Conc: 344.36 ng/ml



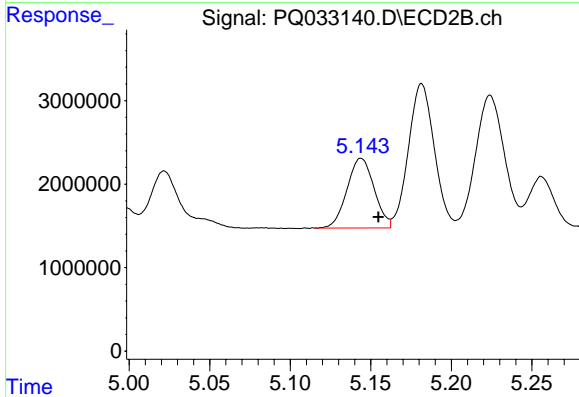
#12 AR-1232-2
 R.T.: 4.964 min
 Delta R.T.: -0.011 min
 Response: 15234951
 Conc: 405.16 ng/ml



#13 AR-1232-3

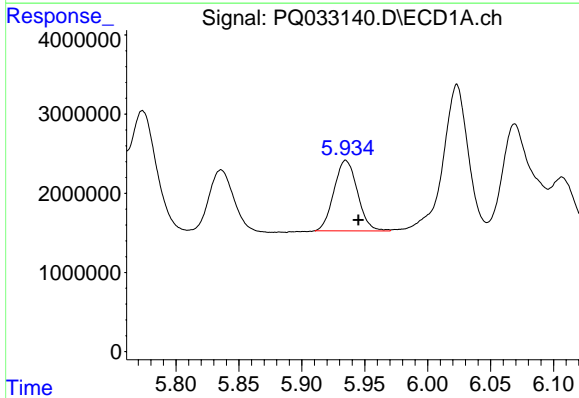
R.T.: 5.773 min
 Delta R.T.: -0.008 min
 Response: 21394476
 Conc: 447.49 ng/ml

Instrument :
 ECD_Q
 ClientSampleId :



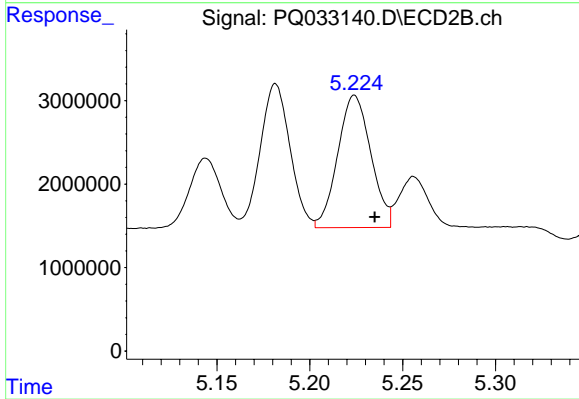
#13 AR-1232-3

R.T.: 5.144 min
 Delta R.T.: -0.011 min
 Response: 9781903
 Conc: 499.44 ng/ml



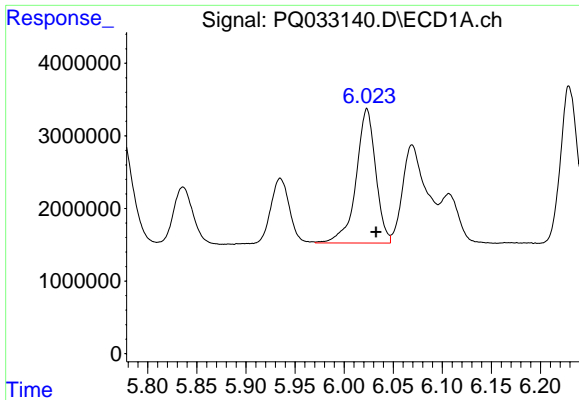
#14 AR-1232-4

R.T.: 5.935 min
 Delta R.T.: -0.010 min
 Response: 11571378
 Conc: 485.80 ng/ml



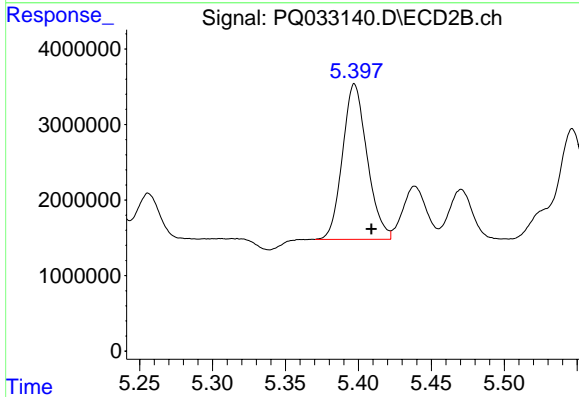
#14 AR-1232-4

R.T.: 5.224 min
 Delta R.T.: -0.011 min
 Response: 19633712
 Conc: 1143.94 ng/ml

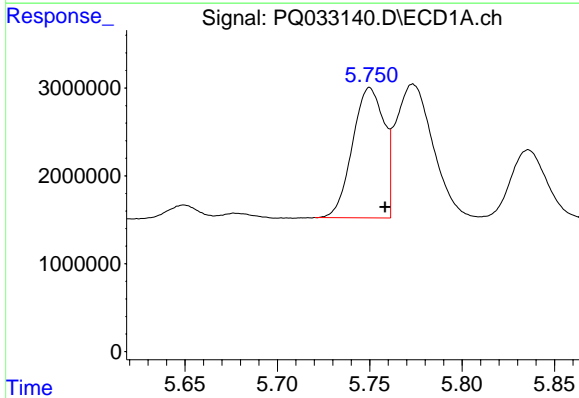


#15 AR-1232-5
 R.T.: 6.023 min
 Delta R.T.: -0.009 min
 Response: 25693196
 Conc: 1440.67 ng/ml

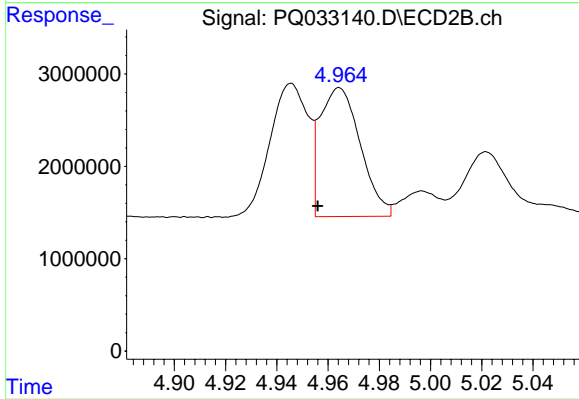
Instrument :
 ECD_Q
 ClientSampleId :



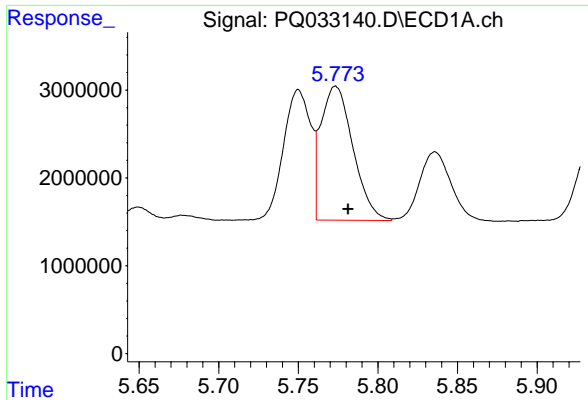
#15 AR-1232-5
 R.T.: 5.397 min
 Delta R.T.: -0.011 min
 Response: 24204997
 Conc: 1241.27 ng/ml



#16 AR-1242-1
 R.T.: 5.750 min
 Delta R.T.: -0.008 min
 Response: 17602373
 Conc: 294.96 ng/ml



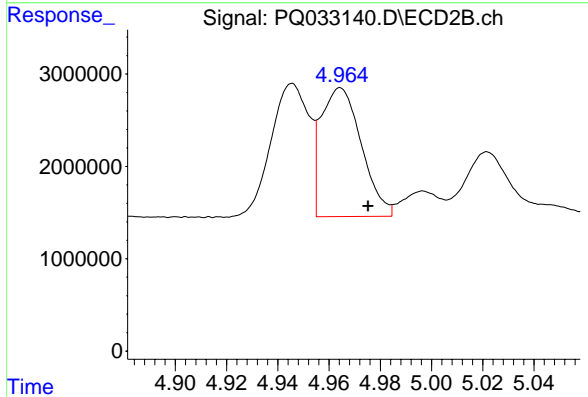
#16 AR-1242-1
 R.T.: 4.964 min
 Delta R.T.: 0.009 min
 Response: 15234951
 Conc: 313.10 ng/ml



#17 AR-1242-2

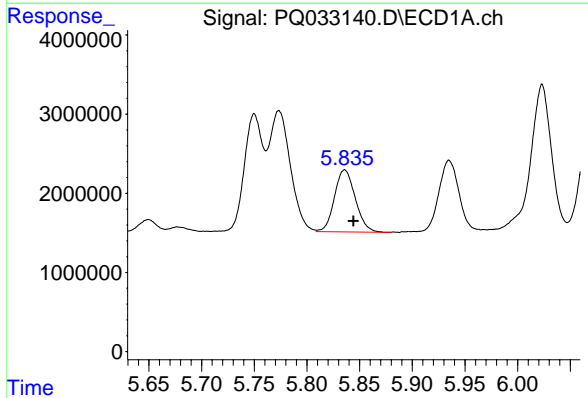
R.T.: 5.773 min
 Delta R.T.: -0.008 min
 Response: 21394476
 Conc: 246.34 ng/ml

Instrument :
 ECD_Q
 ClientSampleId :



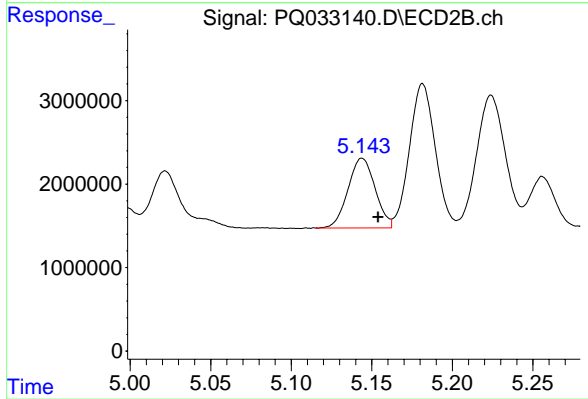
#17 AR-1242-2

R.T.: 4.964 min
 Delta R.T.: -0.011 min
 Response: 15234951
 Conc: 225.70 ng/ml



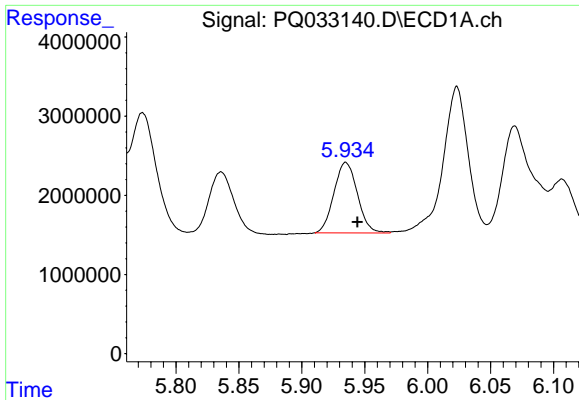
#18 AR-1242-3

R.T.: 5.836 min
 Delta R.T.: -0.008 min
 Response: 10796424
 Conc: 206.48 ng/ml



#18 AR-1242-3

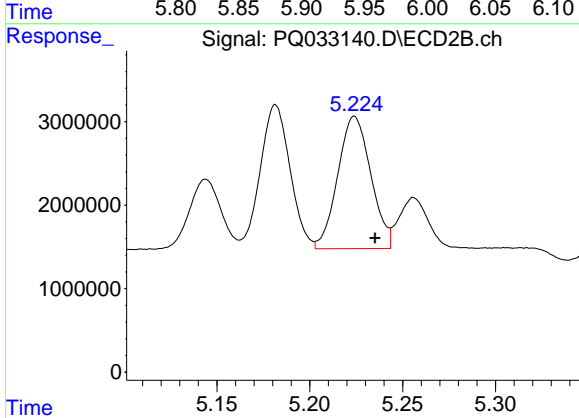
R.T.: 5.144 min
 Delta R.T.: -0.010 min
 Response: 9781903
 Conc: 267.04 ng/ml



#19 AR-1242-4

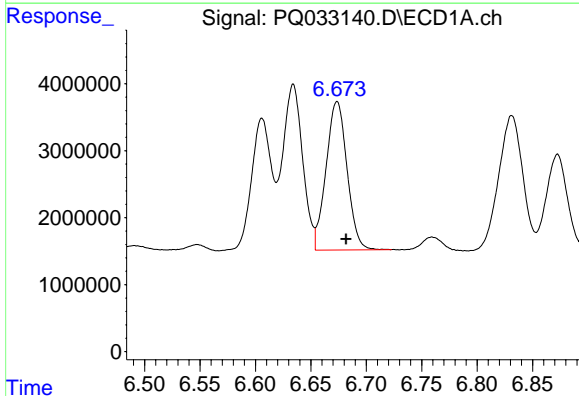
R.T.: 5.935 min
 Delta R.T.: -0.009 min
 Response: 11571378
 Conc: 268.33 ng/ml

Instrument :
 ECD_Q
 ClientSampleId :



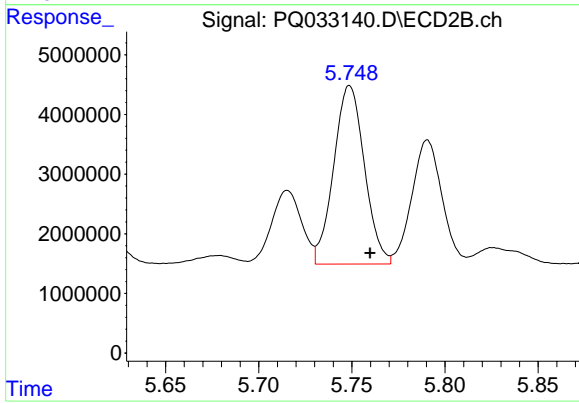
#19 AR-1242-4

R.T.: 5.224 min
 Delta R.T.: -0.011 min
 Response: 19633712
 Conc: 533.05 ng/ml



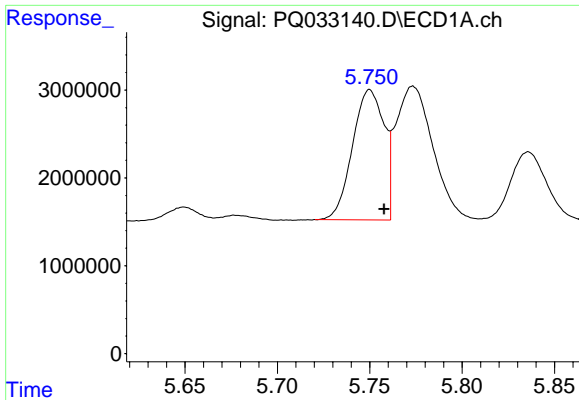
#20 AR-1242-5

R.T.: 6.674 min
 Delta R.T.: -0.008 min
 Response: 29319714
 Conc: 594.75 ng/ml



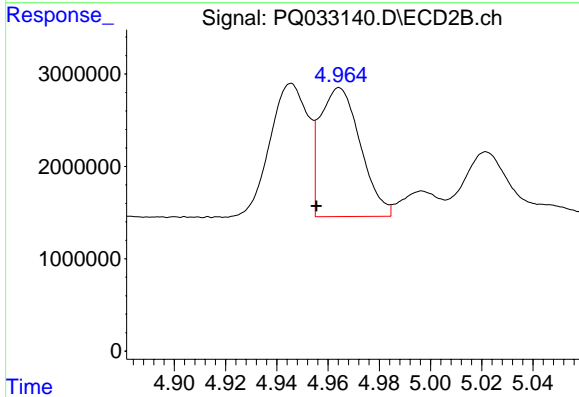
#20 AR-1242-5

R.T.: 5.749 min
 Delta R.T.: -0.011 min
 Response: 34399921
 Conc: 716.08 ng/ml

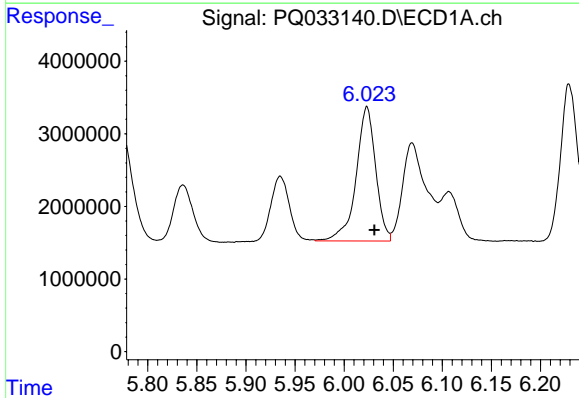


#21 AR-1248-1
 R.T.: 5.750 min
 Delta R.T.: -0.008 min
 Response: 17602373
 Conc: 354.87 ng/ml

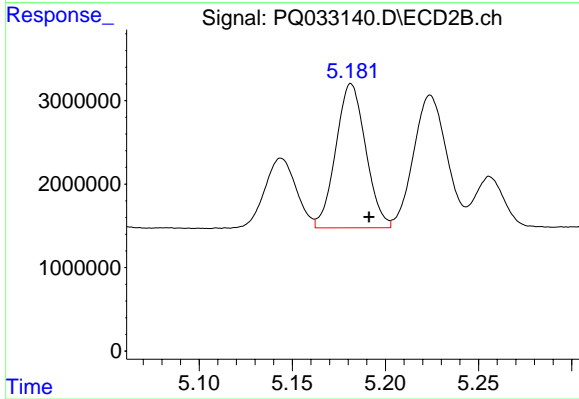
Instrument :
 ECD_Q
 ClientSampleId :



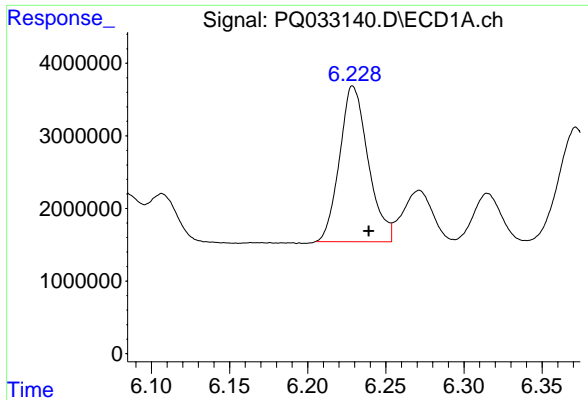
#21 AR-1248-1
 R.T.: 4.964 min
 Delta R.T.: 0.009 min
 Response: 15234951
 Conc: 371.77 ng/ml



#22 AR-1248-2
 R.T.: 6.023 min
 Delta R.T.: -0.008 min
 Response: 25693196
 Conc: 349.32 ng/ml



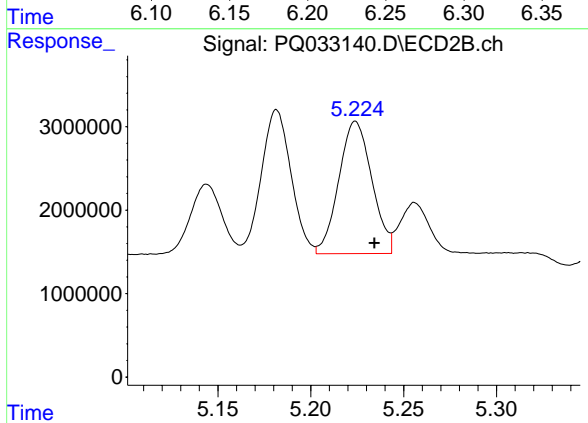
#22 AR-1248-2
 R.T.: 5.182 min
 Delta R.T.: -0.010 min
 Response: 19258002
 Conc: 350.53 ng/ml



#23 AR-1248-3

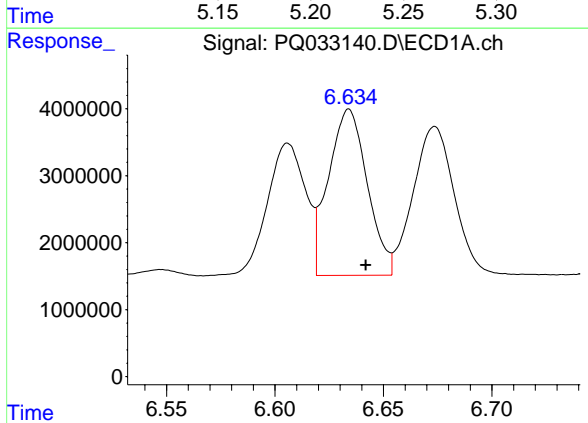
R.T.: 6.229 min
 Delta R.T.: -0.010 min
 Response: 27270150
 Conc: 333.68 ng/ml

Instrument :
 ECD_Q
 ClientSampleId :



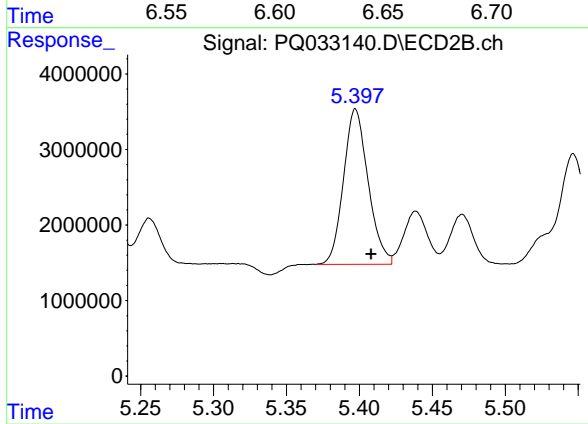
#23 AR-1248-3

R.T.: 5.224 min
 Delta R.T.: -0.010 min
 Response: 19633712
 Conc: 350.59 ng/ml



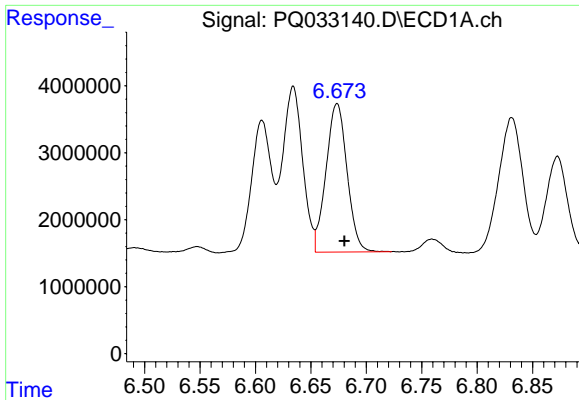
#24 AR-1248-4

R.T.: 6.634 min
 Delta R.T.: -0.008 min
 Response: 30977938
 Conc: 330.71 ng/ml



#24 AR-1248-4

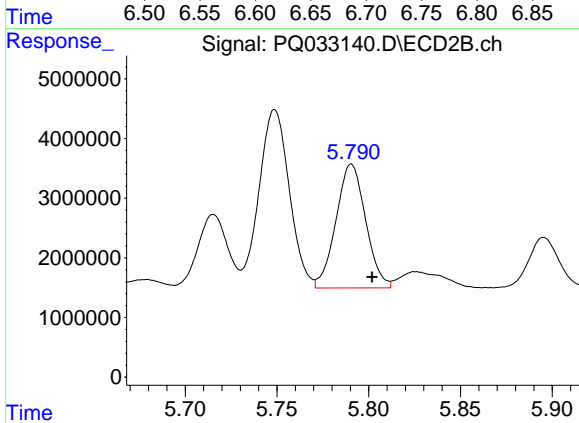
R.T.: 5.397 min
 Delta R.T.: -0.011 min
 Response: 24204997
 Conc: 350.96 ng/ml



#25 AR-1248-5

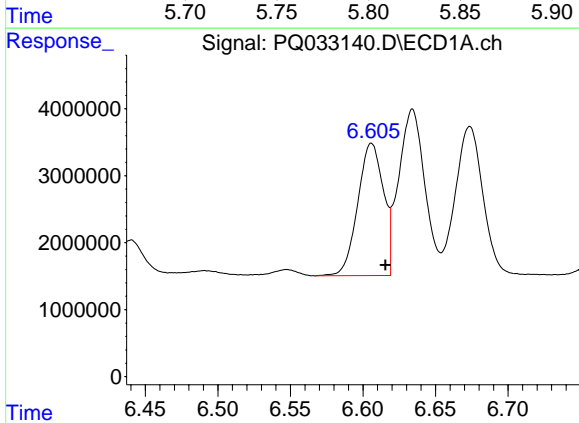
R.T.: 6.674 min
 Delta R.T.: -0.007 min
 Response: 29319714
 Conc: 330.15 ng/ml

Instrument :
 ECD_Q
 ClientSampled :



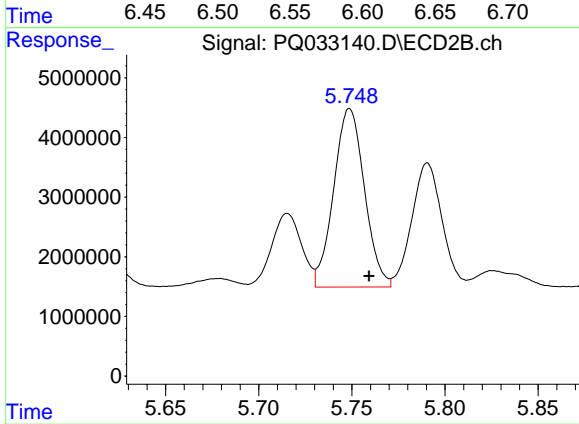
#25 AR-1248-5

R.T.: 5.791 min
 Delta R.T.: -0.011 min
 Response: 23394352
 Conc: 338.42 ng/ml



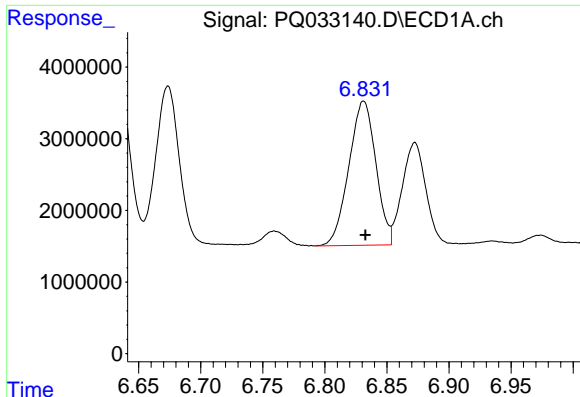
#26 AR-1254-1

R.T.: 6.606 min
 Delta R.T.: -0.009 min
 Response: 24316733
 Conc: 245.37 ng/ml



#26 AR-1254-1

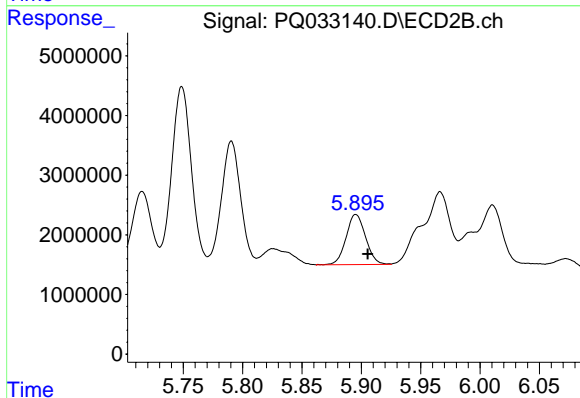
R.T.: 5.749 min
 Delta R.T.: -0.010 min
 Response: 34399921
 Conc: 305.34 ng/ml



#27 AR-1254-2

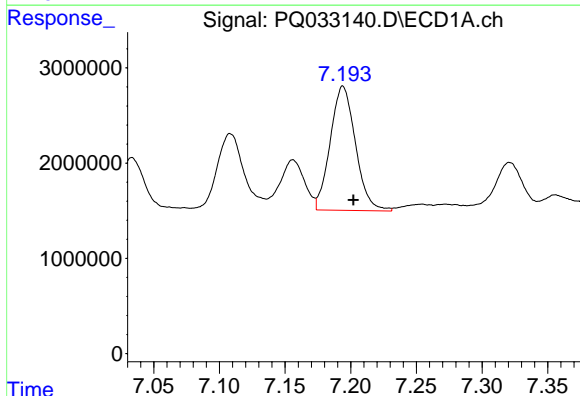
R.T.: 6.831 min
 Delta R.T.: -0.001 min
 Response: 30487454
 Conc: 195.08 ng/ml

Instrument :
 ECD_Q
 ClientSampled :



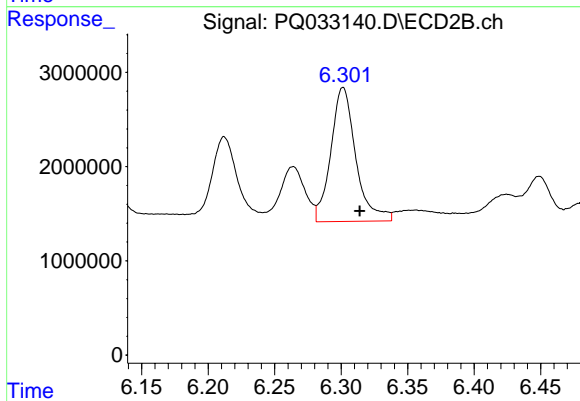
#27 AR-1254-2

R.T.: 5.895 min
 Delta R.T.: -0.010 min
 Response: 9600505
 Conc: 97.23 ng/ml



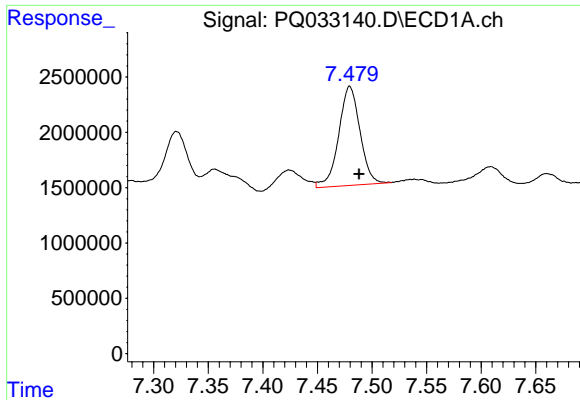
#28 AR-1254-3

R.T.: 7.194 min
 Delta R.T.: -0.008 min
 Response: 17455510
 Conc: 102.87 ng/ml



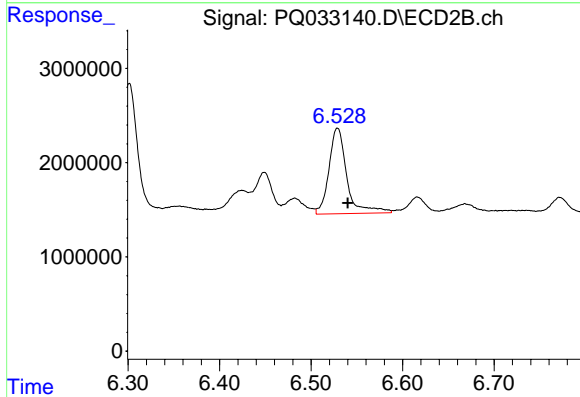
#28 AR-1254-3

R.T.: 6.301 min
 Delta R.T.: -0.012 min
 Response: 18608724
 Conc: 111.97 ng/ml

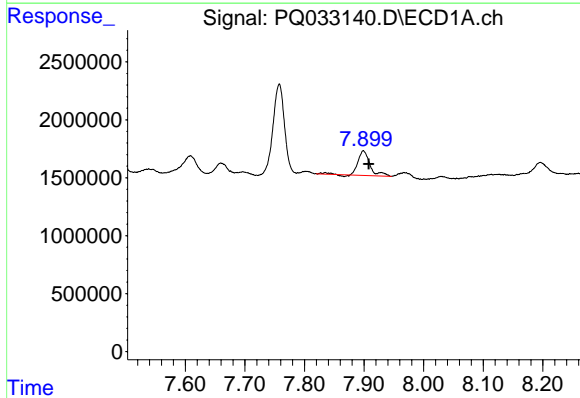


#29 AR-1254-4
 R.T.: 7.480 min
 Delta R.T.: -0.008 min
 Response: 12144309
 Conc: 98.35 ng/ml

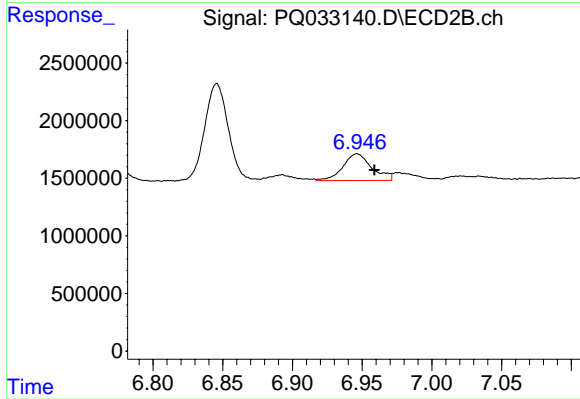
Instrument :
 ECD_Q
 ClientSampleId :



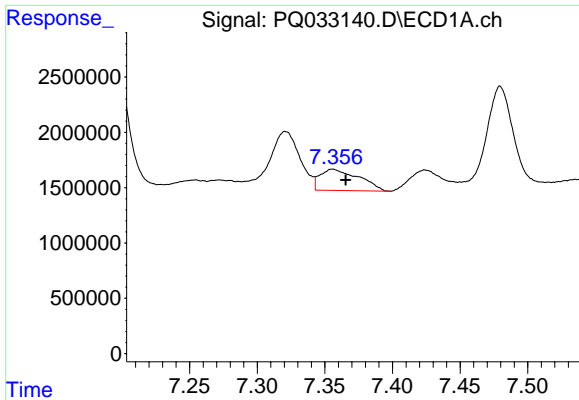
#29 AR-1254-4
 R.T.: 6.529 min
 Delta R.T.: -0.011 min
 Response: 12368727
 Conc: 116.25 ng/ml



#30 AR-1254-5
 R.T.: 7.899 min
 Delta R.T.: -0.009 min
 Response: 2957489
 Conc: 22.34 ng/ml

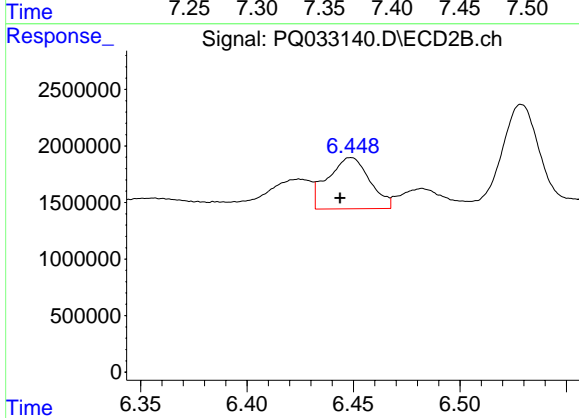


#30 AR-1254-5
 R.T.: 6.946 min
 Delta R.T.: -0.013 min
 Response: 3347961
 Conc: 22.79 ng/ml

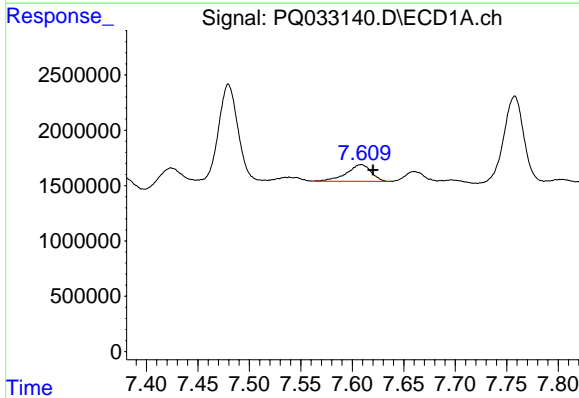


#31 AR-1260-1
 R.T.: 7.356 min
 Delta R.T.: -0.010 min
 Response: 3866837
 Conc: 36.15 ng/ml

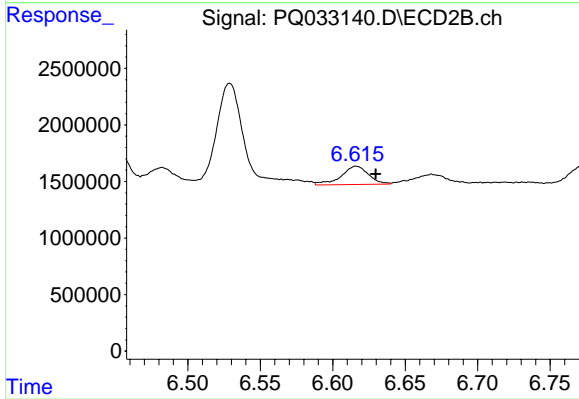
Instrument :
 ECD_Q
 ClientSampleId :



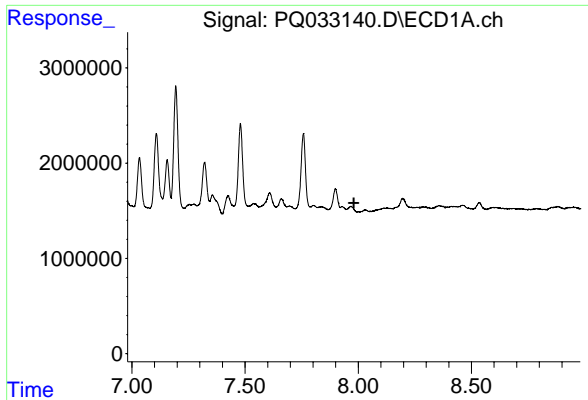
#31 AR-1260-1
 R.T.: 6.449 min
 Delta R.T.: 0.005 min
 Response: 6235504
 Conc: 66.39 ng/ml



#32 AR-1260-2
 R.T.: 7.609 min
 Delta R.T.: -0.012 min
 Response: 2501456
 Conc: 19.81 ng/ml



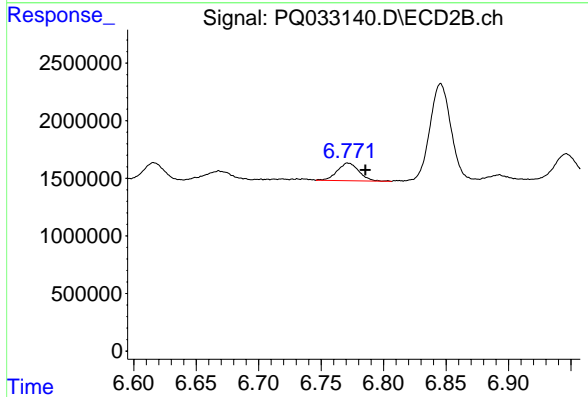
#32 AR-1260-2
 R.T.: 6.616 min
 Delta R.T.: -0.013 min
 Response: 2139886
 Conc: 18.37 ng/ml



#33 AR-1260-3

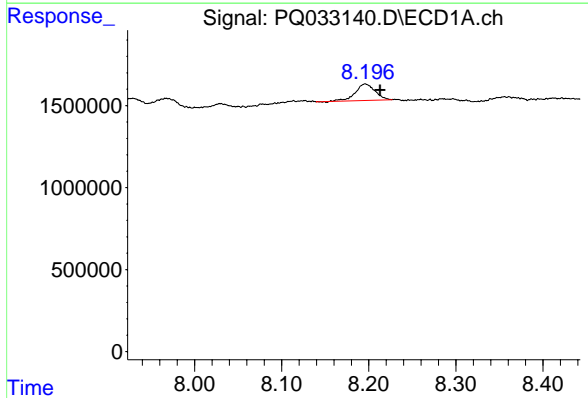
R.T.: 0.000 min
 Exp R.T.: 7.981 min
 Response: 0
 Conc: N.D.

Instrument :
 ECD_Q
 ClientSampleId :



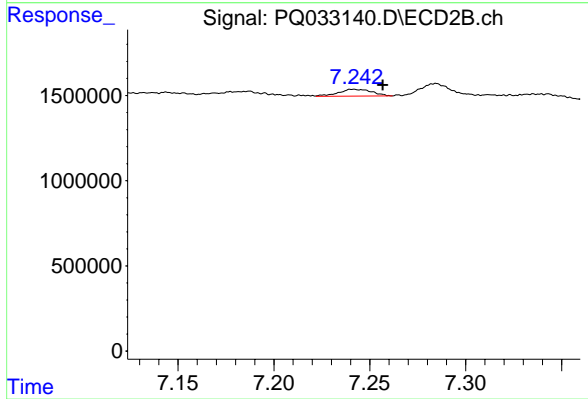
#33 AR-1260-3

R.T.: 6.772 min
 Delta R.T.: -0.014 min
 Response: 1867374
 Conc: 17.32 ng/ml



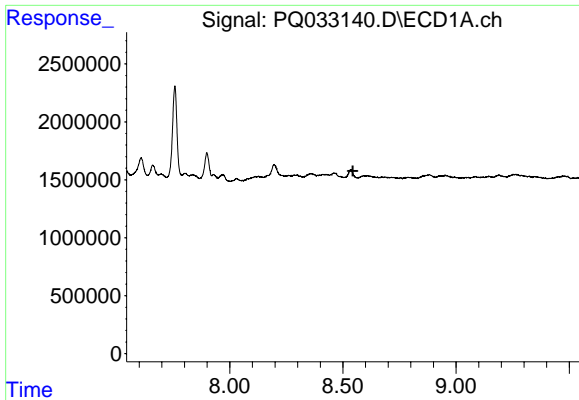
#34 AR-1260-4

R.T.: 8.196 min
 Delta R.T.: -0.017 min
 Response: 1572999
 Conc: 15.54 ng/ml



#34 AR-1260-4

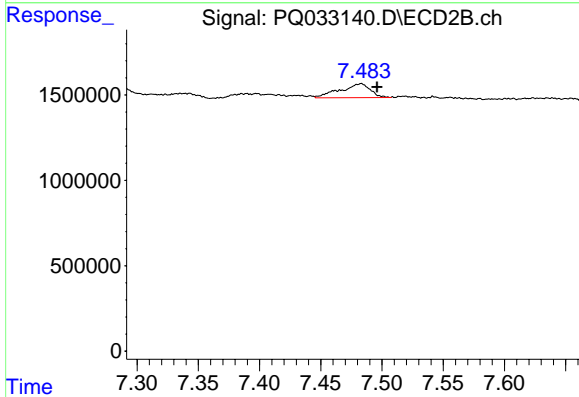
R.T.: 7.241 min
 Delta R.T.: -0.015 min
 Response: 481818
 Conc: 6.27 ng/ml



#35 AR-1260-5

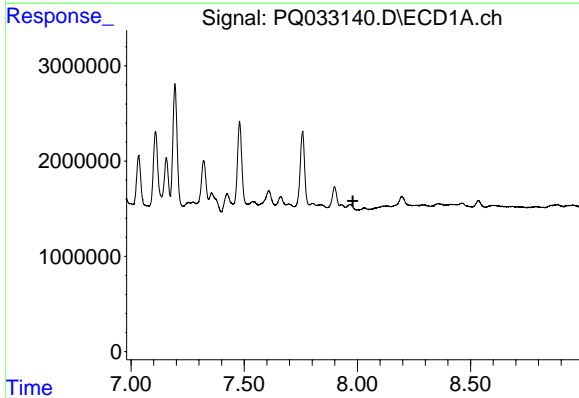
R.T.: 0.000 min
 Exp R.T. : 8.544 min
 Response: 0
 Conc: N.D.

Instrument :
 ECD_Q
 ClientSampled :



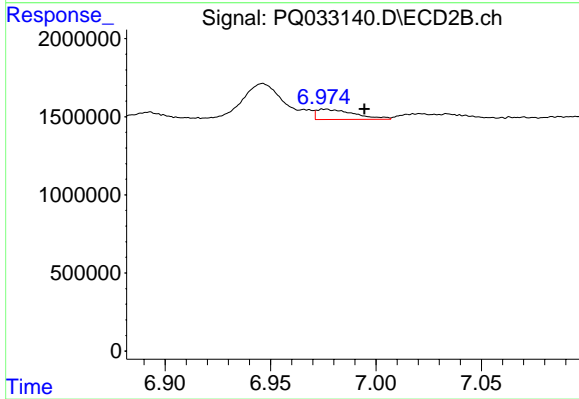
#35 AR-1260-5

R.T.: 7.483 min
 Delta R.T.: -0.013 min
 Response: 1407787
 Conc: 7.33 ng/ml



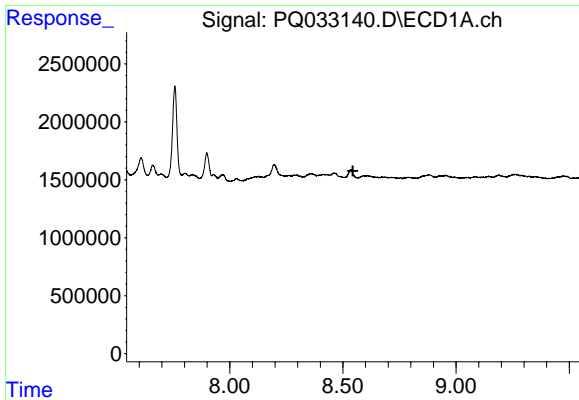
#36 AR-1262-1

R.T.: 0.000 min
 Exp R.T. : 7.980 min
 Response: 0
 Conc: N.D.



#36 AR-1262-1

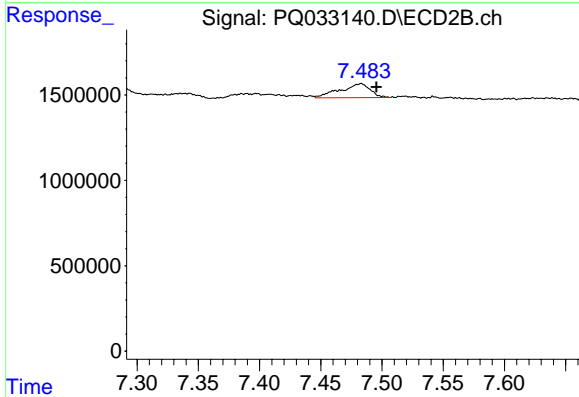
R.T.: 6.976 min
 Delta R.T.: -0.019 min
 Response: 823693
 Conc: 6.41 ng/ml



#37 AR-1262-2

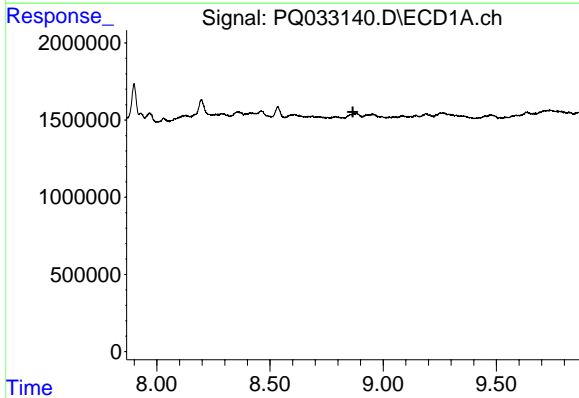
R.T.: 0.000 min
 Exp R.T. : 8.544 min
 Response: 0
 Conc: N.D.

Instrument :
 ECD_Q
 ClientSampleId :



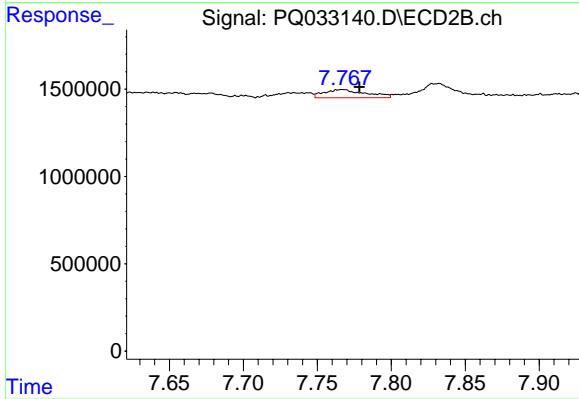
#37 AR-1262-2

R.T.: 7.483 min
 Delta R.T.: -0.013 min
 Response: 1407787
 Conc: 5.88 ng/ml



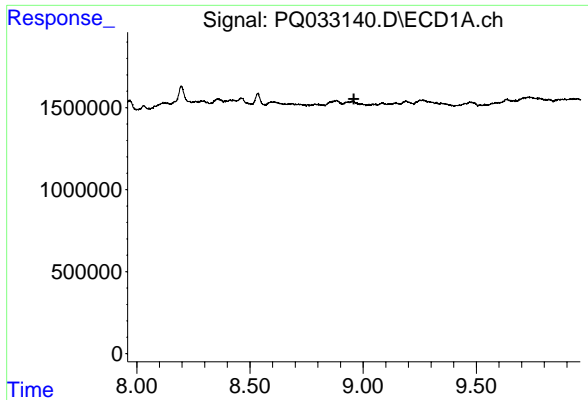
#38 AR-1262-3

R.T.: 0.000 min
 Exp R.T. : 8.866 min
 Response: 0
 Conc: N.D.



#38 AR-1262-3

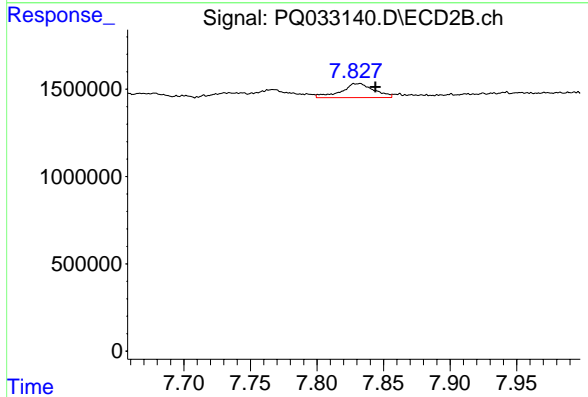
R.T.: 7.767 min
 Delta R.T.: -0.011 min
 Response: 904130
 Conc: 9.71 ng/ml



#39 AR-1262-4

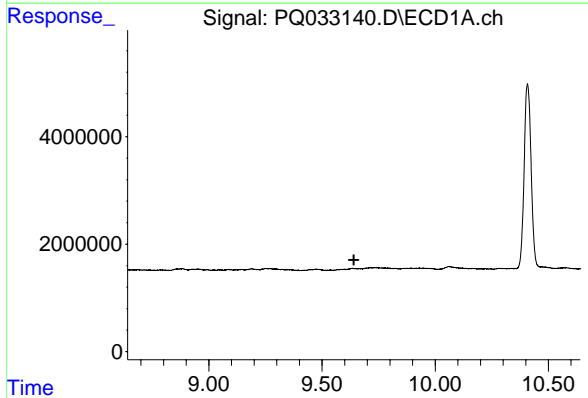
R.T.: 0.000 min
 Exp R.T. : 8.959 min
 Response: 0
 Conc: N.D.

Instrument :
 ECD_Q
 ClientSampled :



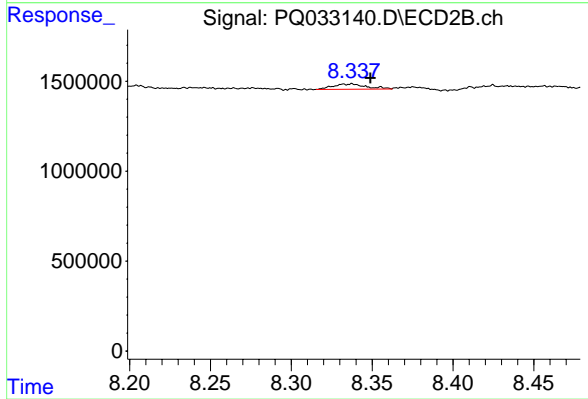
#39 AR-1262-4

R.T.: 7.832 min
 Delta R.T.: -0.012 min
 Response: 1375681
 Conc: 7.90 ng/ml



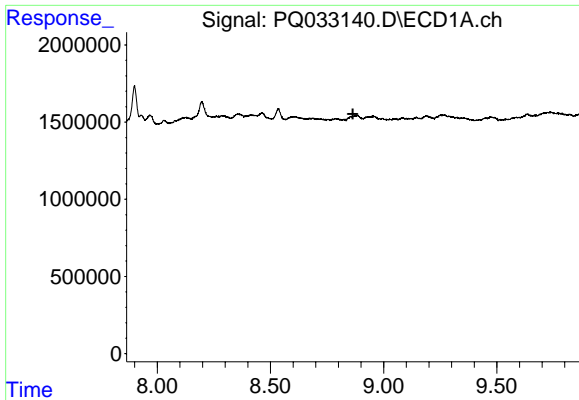
#40 AR-1262-5

R.T.: 0.000 min
 Exp R.T. : 9.640 min
 Response: 0
 Conc: N.D.



#40 AR-1262-5

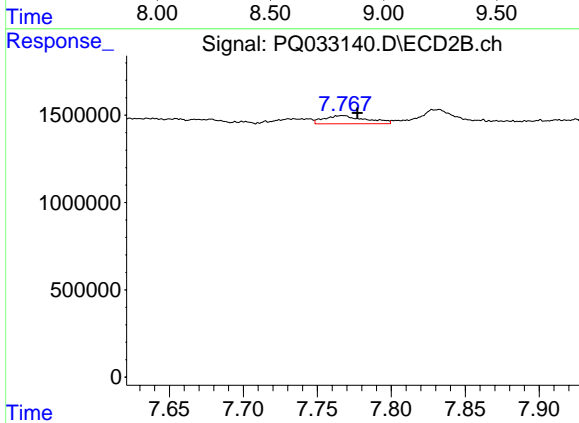
R.T.: 8.338 min
 Delta R.T.: -0.011 min
 Response: 418064
 Conc: 5.18 ng/ml



#41 AR-1268-1

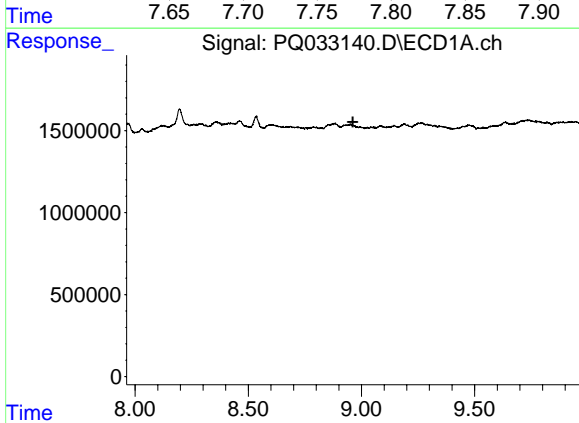
R.T.: 0.000 min
 Exp R.T.: 8.864 min
 Response: 0
 Conc: N.D.

Instrument :
 ECD_Q
 ClientSampled :



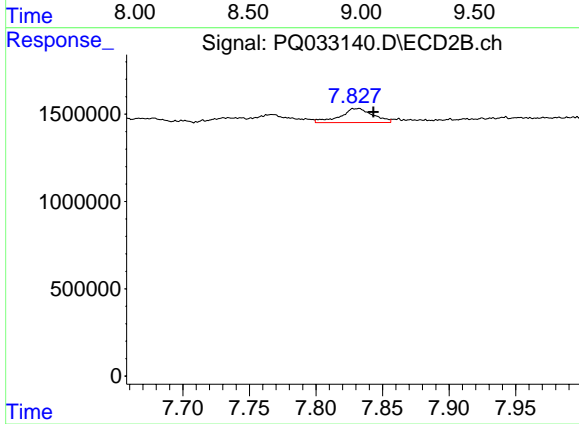
#41 AR-1268-1

R.T.: 7.767 min
 Delta R.T.: -0.010 min
 Response: 904130
 Conc: 2.64 ng/ml



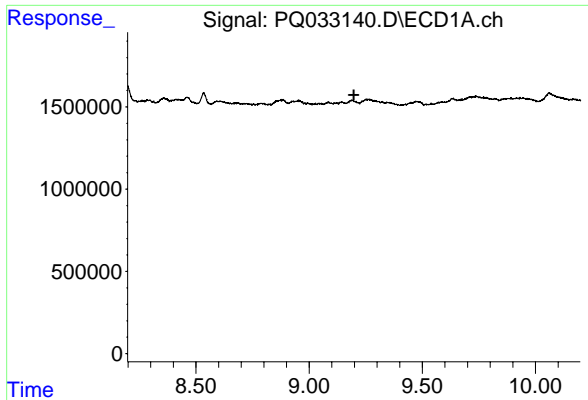
#42 AR-1268-2

R.T.: 0.000 min
 Exp R.T.: 8.962 min
 Response: 0
 Conc: N.D.



#42 AR-1268-2

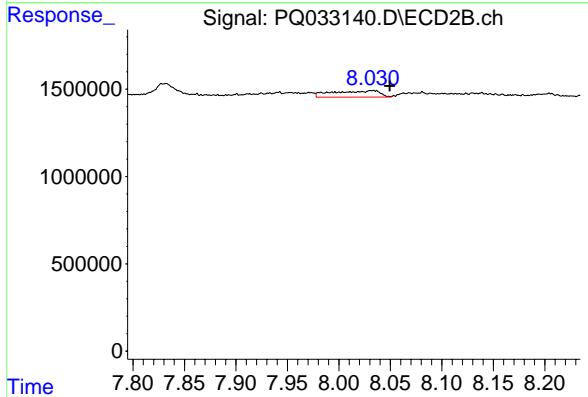
R.T.: 7.832 min
 Delta R.T.: -0.011 min
 Response: 1375681
 Conc: 4.45 ng/ml



#43 AR-1268-3

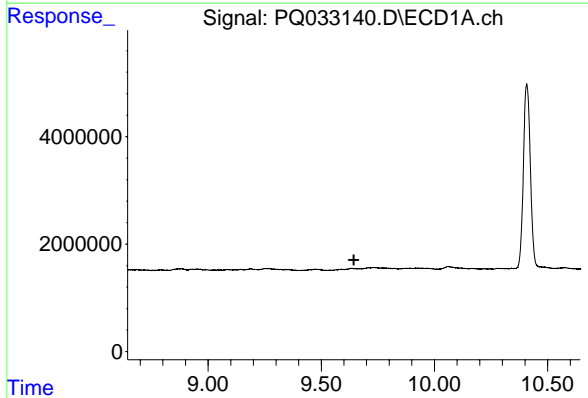
R.T.: 0.000 min
 Exp R.T.: 9.197 min
 Response: 0
 Conc: N.D.

Instrument :
 ECD_Q
 ClientSampled :



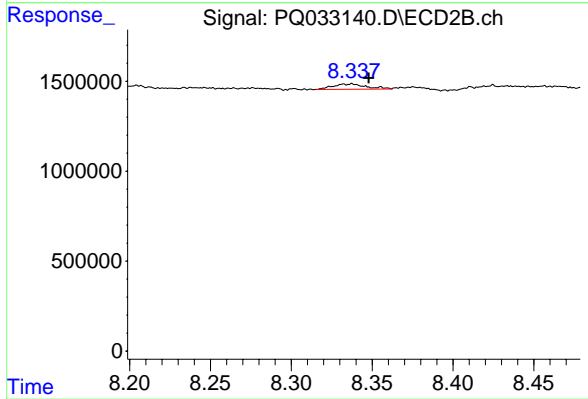
#43 AR-1268-3

R.T.: 8.032 min
 Delta R.T.: -0.017 min
 Response: 1145459
 Conc: 4.48 ng/ml



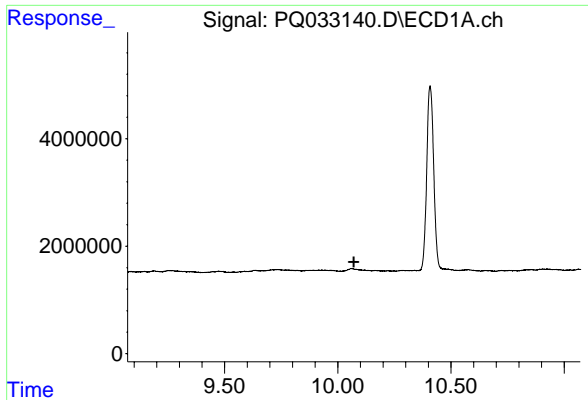
#44 AR-1268-4

R.T.: 0.000 min
 Exp R.T.: 9.644 min
 Response: 0
 Conc: N.D.



#44 AR-1268-4

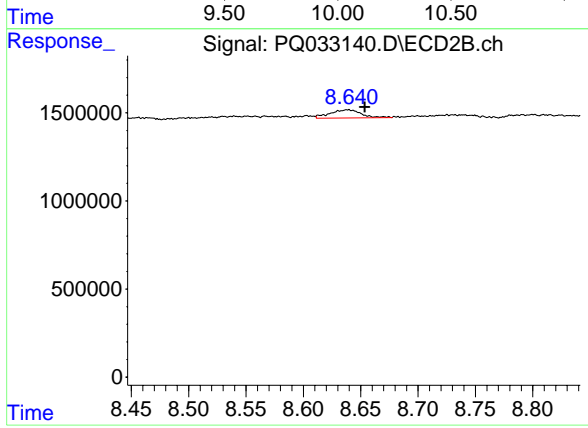
R.T.: 8.338 min
 Delta R.T.: -0.010 min
 Response: 418064
 Conc: 3.79 ng/ml



#45 AR-1268-5

R.T.: 0.000 min
 Exp R.T.: 10.071 min
 Response: 0
 Conc: N.D.

Instrument :
 ECD_Q
 ClientSampleId :



#45 AR-1268-5

R.T.: 8.639 min
 Delta R.T.: -0.015 min
 Response: 886134
 Conc: 1.06 ng/ml