

Data Path : Z:\pestpcbsrv\HPCHEM1\ECD\_Q\Data\PQ101518\  
 Data File : PQ033150.D  
 Signal(s) : Signal #1: ECD1A.ch Signal #2: ECD2B.ch  
 Acq On : 15 Oct 2018 16:48  
 Operator : SM\SJ  
 Sample : AR1248CCC400  
 Misc :  
 ALS Vial : 5 Sample Multiplier: 1

Instrument :  
 ECD\_Q  
 ClientSampleId :

Integration File signal 1: autoint1.e  
 Integration File signal 2: autoint2.e  
 Quant Time: Oct 16 02:04:33 2018  
 Quant Method : Z:\pestpcbsrv\HPCHEM1\ECD\_Q\Method\PQ100918CLP.M  
 Quant Title : GC EXTRACTABLES  
 QLast Update : Wed Oct 10 08:14:42 2018  
 Response via : Initial Calibration  
 Integrator: ChemStation

Volume Inj. : 1 µl  
 Signal #1 Phase : ZB MR1 Signal #2 Phase: ZB MR2  
 Signal #1 Info : 30Mx0.32mmx 0.5µm Signal #2 Info : 30M x 0.32mm x 0.25µm

Compound	RT#1	RT#2	Resp#1	Resp#2	ng/ml	ng/ml
-----						
System Monitoring Compounds						
1) SA Tetrachlo...	4.575	3.854	43623727	33259693	21.265	21.384
2) SA Decachlor...	10.410	8.906	73697534	63034732	38.987	39.211
Target Compounds						
3) L1 AR-1016-1	5.751	4.965	18351401	15931064	263.557	278.282
4) L1 AR-1016-2	5.773	4.965	21480903	15931064	208.536	199.929
5) L1 AR-1016-3	5.835	5.145	11138706	10381816	177.886	250.283 #
6) L1 AR-1016-4	5.935	5.182	11728047	20058186	232.047	585.404 #
7) L1 AR-1016-5	6.230	5.398	27771349	25082716	538.926	548.964
8) L2 AR-1221-1	0.000	4.065	0	197782	N.D.	10.702 #
9) L2 AR-1221-2	0.000	4.156	0	767948	N.D.	58.059 #
10) L2 AR-1221-3	4.950	4.232	2310324	2061548	40.269	45.080
11) L3 AR-1232-1	4.950	4.232	2310324	2061548	52.041	59.574
12) L3 AR-1232-2	5.483	4.965	8302040	15931064	351.501	423.673
13) L3 AR-1232-3	5.773	5.145	21480903	10381816	449.301	530.069
14) L3 AR-1232-4	5.935	5.224	11728047	20374696	492.382	1187.114 #
15) L3 AR-1232-5	6.023	5.398	25584925	25082716	1434.601	1286.286
16) L4 AR-1242-1	5.751	4.965	18351401	15931064	307.514	327.407
17) L4 AR-1242-2	5.773	4.965	21480903	15931064	247.339	236.017
18) L4 AR-1242-3	5.835	5.145	11138706	10381816	213.023	283.419 #
19) L4 AR-1242-4	5.935	5.224	11728047	20374696	271.961	553.164 #
20) L4 AR-1242-5	6.674	5.749	29720847	36393933	602.889	757.583 #
21) L5 AR-1248-1	5.751	4.947	18351401	15467214	369.968	377.435
22) L5 AR-1248-2	6.023	5.182	25584925	20058186	347.847	365.096
23) L5 AR-1248-3	6.230	5.224	27771349	20374696	339.817	363.817
24) L5 AR-1248-4	6.634	5.398	31065541	25082716	331.644	363.681
25) L5 AR-1248-5	6.674	5.791	29720847	25247907	334.662	365.235
26) L6 AR-1254-1	6.607	5.749	24544713	36393933	247.671	323.039 #
27) L6 AR-1254-2	6.831	5.896	31336445	10216485	200.516	103.463 #
28) L6 AR-1254-3	7.195	6.302	17190961	17892160	101.311	107.660
29) L6 AR-1254-4	7.479	6.529	11908855	12105146	96.448	113.774
30) L6 AR-1254-5	7.899	6.947	2688342	3592068	20.308	24.455
31) L7 AR-1260-1	7.358	6.449	3384850	5856002	31.647	62.348 #
32) L7 AR-1260-2	7.612	6.617	2473696	2508033	19.590	21.526
33) L7 AR-1260-3	0.000	6.772	0	2302890	N.D.	21.354 #
34) L7 AR-1260-4	8.197	7.243	1692031	796316	16.715	10.359 #
35) L7 AR-1260-5	0.000	7.484	0	1975656	N.D.	10.284 #
36) L8 AR-1262-1	0.000	6.978	0	970620	N.D.	7.553 #
37) L8 AR-1262-2	0.000	7.484	0	1975656	N.D.	8.248 #
38) L8 AR-1262-3	0.000	7.767	0	1379801	N.D.	14.813 #
39) L8 AR-1262-4	0.000	7.830	0	1767114	N.D.	10.150 #
40) L8 AR-1262-5	0.000	8.340	0	346601	N.D.	4.295 #
41) L9 AR-1268-1	0.000	7.767	0	1379801	N.D.	4.036 #

Data Path : Z:\pestpcbsrv\HPCHEM1\ECD\_Q\Data\PQ101518\  
 Data File : PQ033150.D  
 Signal(s) : Signal #1: ECD1A.ch Signal #2: ECD2B.ch  
 Acq On : 15 Oct 2018 16:48  
 Operator : SM\SJ  
 Sample : AR1248CCC400  
 Misc :  
 ALS Vial : 5 Sample Multiplier: 1

Instrument :  
 ECD\_Q  
 ClientSampleId :

Integration File signal 1: autoint1.e  
 Integration File signal 2: autoint2.e  
 Quant Time: Oct 16 02:04:33 2018  
 Quant Method : Z:\pestpcbsrv\HPCHEM1\ECD\_Q\Method\PQ100918CLP.M  
 Quant Title : GC EXTRACTABLES  
 QLast Update : Wed Oct 10 08:14:42 2018  
 Response via : Initial Calibration  
 Integrator: ChemStation

Volume Inj. : 1 µl  
 Signal #1 Phase : ZB MR1 Signal #2 Phase: ZB MR2  
 Signal #1 Info : 30Mx0.32mmx 0.5µm Signal #2 Info : 30M x 0.32mm x 0.25µm

	Compound	RT#1	RT#2	Resp#1	Resp#2	ng/ml	ng/ml
42)	L9 AR-1268-2	0.000	7.830	0	1767114	N.D.	5.718 #
43)	L9 AR-1268-3	0.000	8.032	0	535447	N.D.	2.093 #
44)	L9 AR-1268-4	0.000	8.340	0	346601	N.D.	3.142 #
45)	L9 AR-1268-5	0.000	8.637	0	744149	N.D.	0.890 #

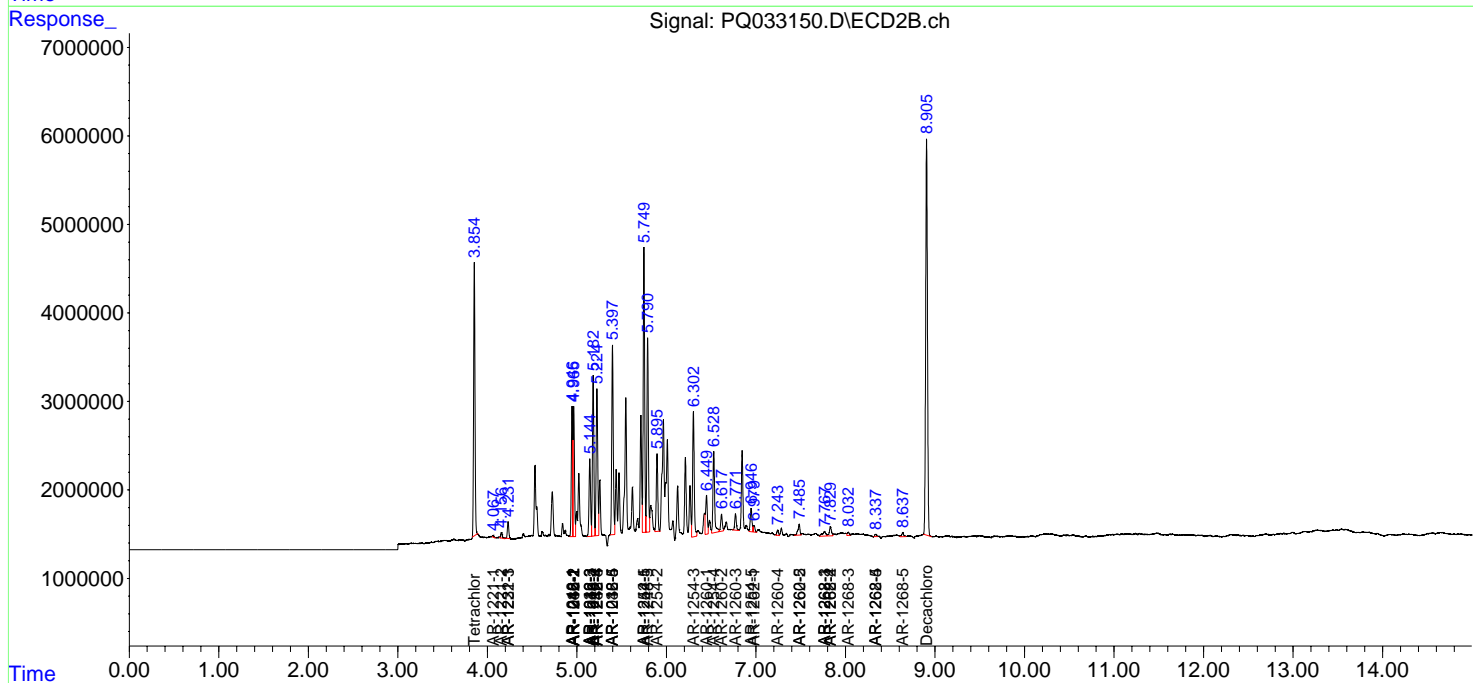
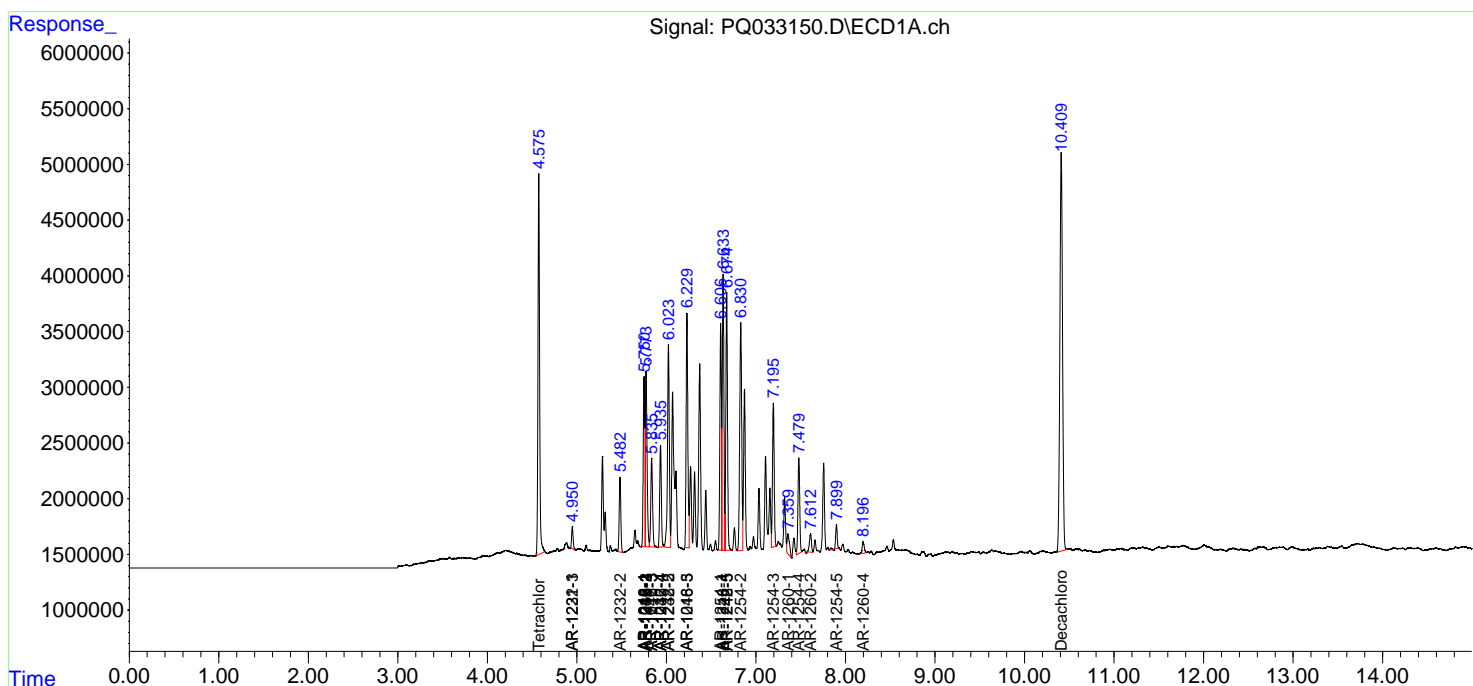
(f)=RT Delta > 1/2 Window (#)=Amounts differ by > 25% (m)=manual int.

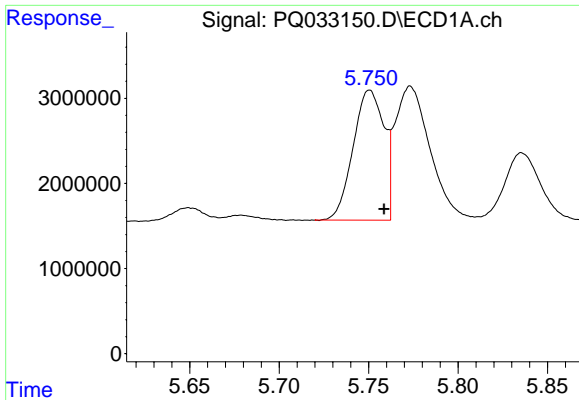
Data Path : Z:\pestpcbsrv\HPCHEM1\ECD\_Q\Data\PQ101518\  
 Data File : PQ033150.D  
 Signal(s) : Signal #1: ECD1A.ch Signal #2: ECD2B.ch  
 Acq On : 15 Oct 2018 16:48  
 Operator : SM\SJ  
 Sample : AR1248CCC400  
 Misc :  
 ALS Vial : 5 Sample Multiplier: 1

Instrument :  
 ECD\_Q  
 ClientSampled :

Integration File signal 1: autoint1.e  
 Integration File signal 2: autoint2.e  
 Quant Time: Oct 16 02:04:33 2018  
 Quant Method : Z:\pestpcbsrv\HPCHEM1\ECD\_Q\Method\PQ100918CLP.M  
 Quant Title : GC EXTRACTABLES  
 QLast Update : Wed Oct 10 08:14:42 2018  
 Response via : Initial Calibration  
 Integrator: ChemStation

Volume Inj. : 1 µl  
 Signal #1 Phase : ZB MR1 Signal #2 Phase: ZB MR2  
 Signal #1 Info : 30Mx0.32mmx 0.5µm Signal #2 Info : 30M x 0.32mm x 0.25µm

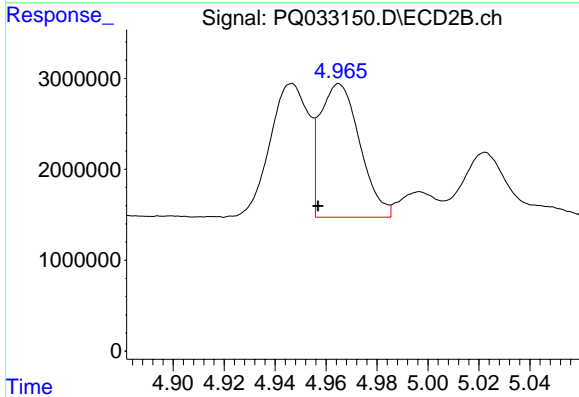




#3 AR-1016-1

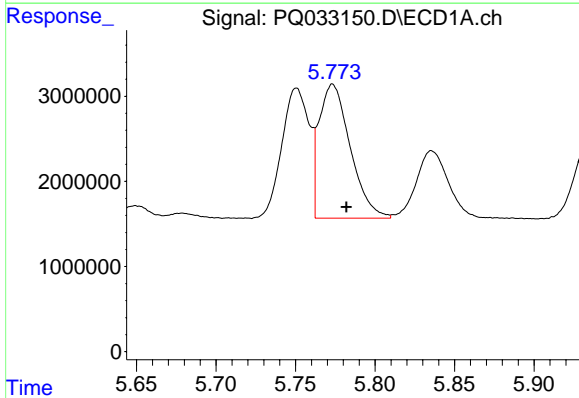
R.T.: 5.751 min  
 Delta R.T.: -0.008 min  
 Response: 18351401  
 Conc: 263.56 ng/ml

Instrument :  
 ECD\_Q  
 ClientSampleId :



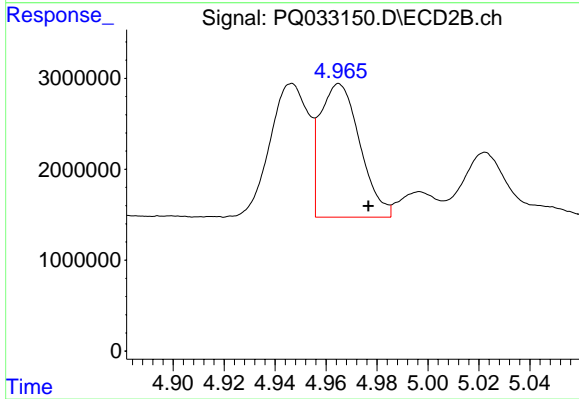
#3 AR-1016-1

R.T.: 4.965 min  
 Delta R.T.: 0.008 min  
 Response: 15931064  
 Conc: 278.28 ng/ml



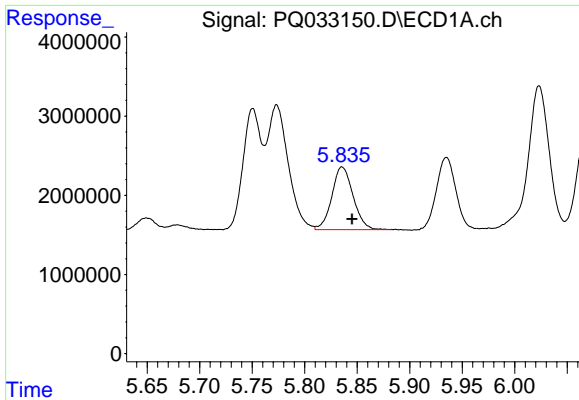
#4 AR-1016-2

R.T.: 5.773 min  
 Delta R.T.: -0.009 min  
 Response: 21480903  
 Conc: 208.54 ng/ml



#4 AR-1016-2

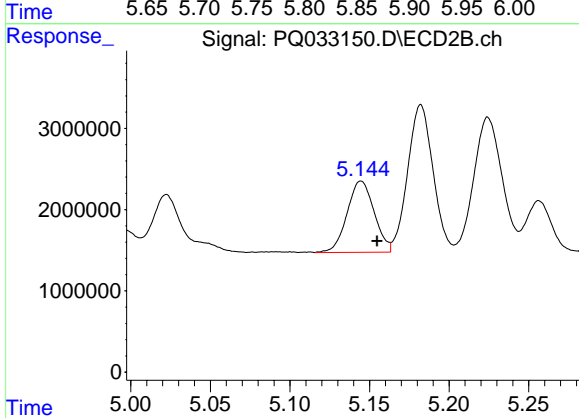
R.T.: 4.965 min  
 Delta R.T.: -0.011 min  
 Response: 15931064  
 Conc: 199.93 ng/ml



#5 AR-1016-3

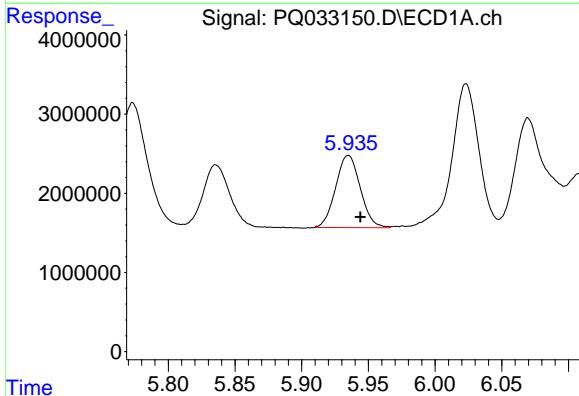
R.T.: 5.835 min  
 Delta R.T.: -0.010 min  
 Response: 11138706  
 Conc: 177.89 ng/ml

Instrument :  
 ECD\_Q  
 ClientSampled :



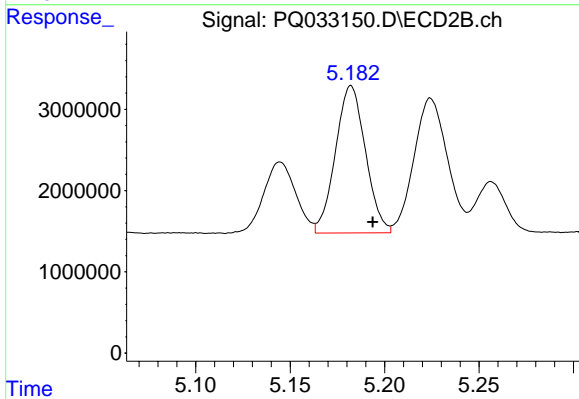
#5 AR-1016-3

R.T.: 5.145 min  
 Delta R.T.: -0.010 min  
 Response: 10381816  
 Conc: 250.28 ng/ml



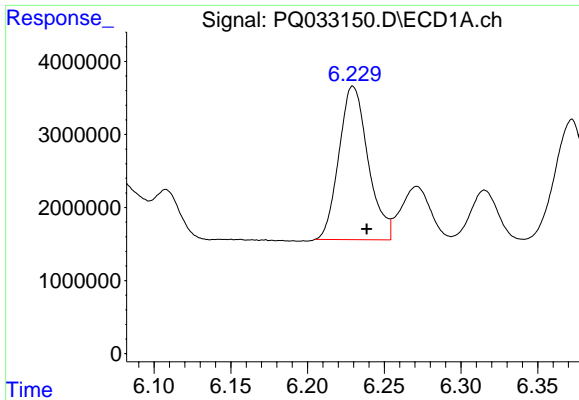
#6 AR-1016-4

R.T.: 5.935 min  
 Delta R.T.: -0.009 min  
 Response: 11728047  
 Conc: 232.05 ng/ml



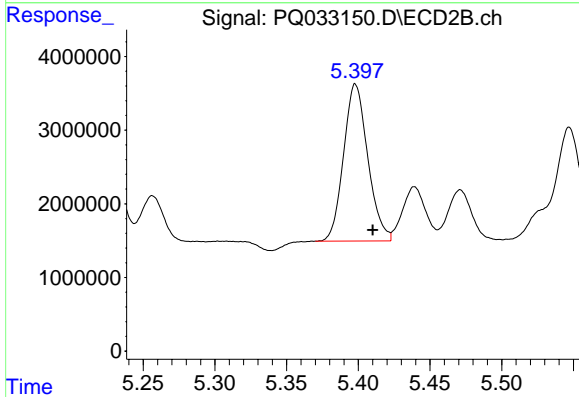
#6 AR-1016-4

R.T.: 5.182 min  
 Delta R.T.: -0.011 min  
 Response: 20058186  
 Conc: 585.40 ng/ml

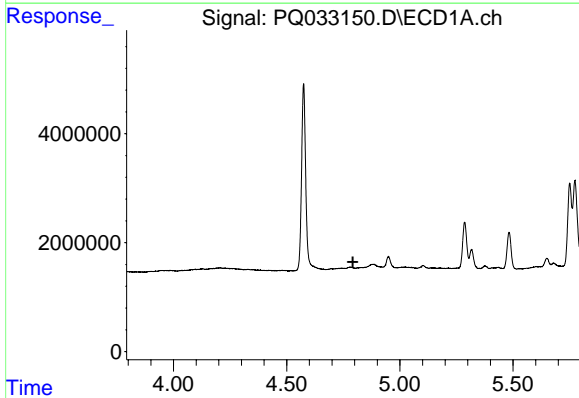


#7 AR-1016-5  
 R.T.: 6.230 min  
 Delta R.T.: -0.009 min  
 Response: 27771349  
 Conc: 538.93 ng/ml

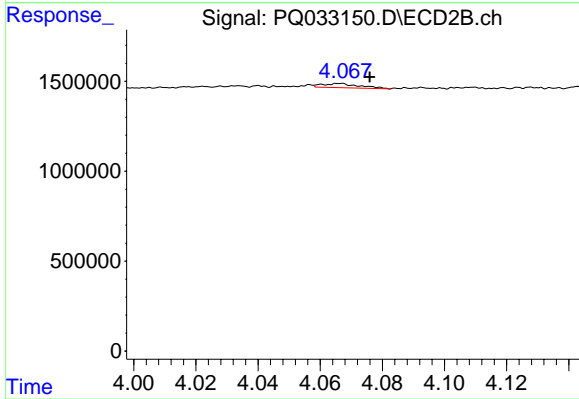
Instrument :  
 ECD\_Q  
 ClientSampled :



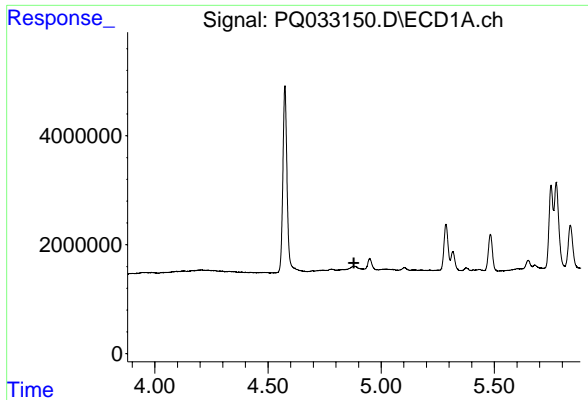
#7 AR-1016-5  
 R.T.: 5.398 min  
 Delta R.T.: -0.012 min  
 Response: 25082716  
 Conc: 548.96 ng/ml



#8 AR-1221-1  
 R.T.: 0.000 min  
 Exp R.T. : 4.792 min  
 Response: 0  
 Conc: N.D.



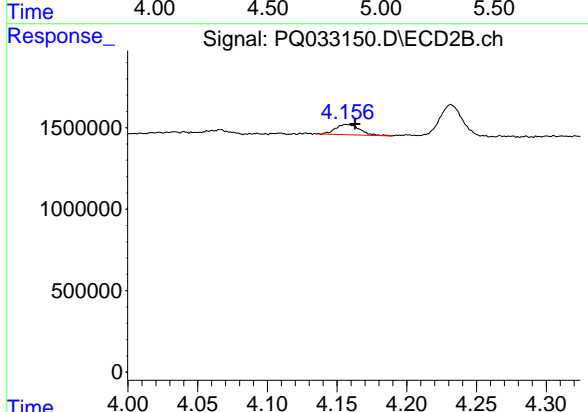
#8 AR-1221-1  
 R.T.: 4.065 min  
 Delta R.T.: -0.011 min  
 Response: 197782  
 Conc: 10.70 ng/ml



#9 AR-1221-2

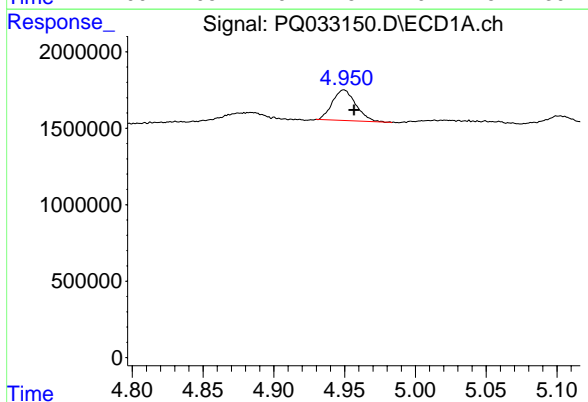
R.T.: 0.000 min  
 Exp R.T.: 4.879 min  
 Response: 0  
 Conc: N.D.

Instrument :  
 ECD\_Q  
 ClientSampled :



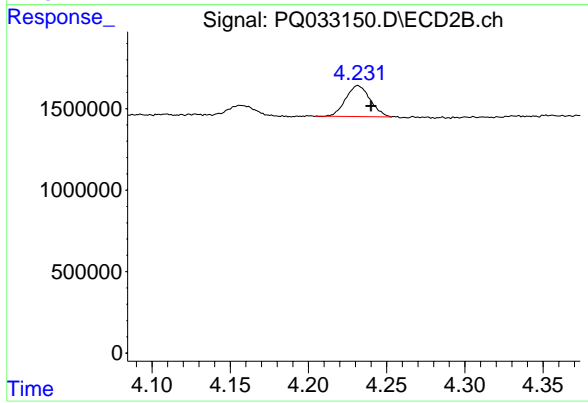
#9 AR-1221-2

R.T.: 4.156 min  
 Delta R.T.: -0.007 min  
 Response: 767948  
 Conc: 58.06 ng/ml



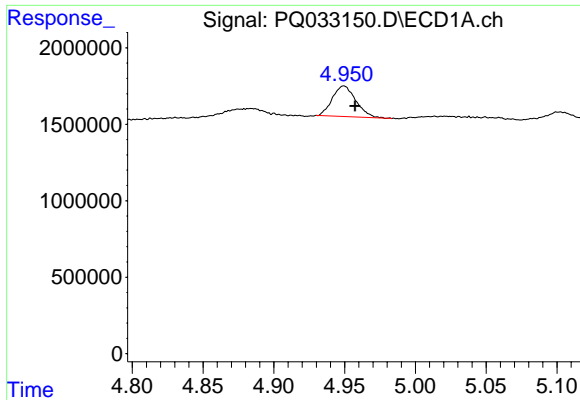
#10 AR-1221-3

R.T.: 4.950 min  
 Delta R.T.: -0.007 min  
 Response: 2310324  
 Conc: 40.27 ng/ml



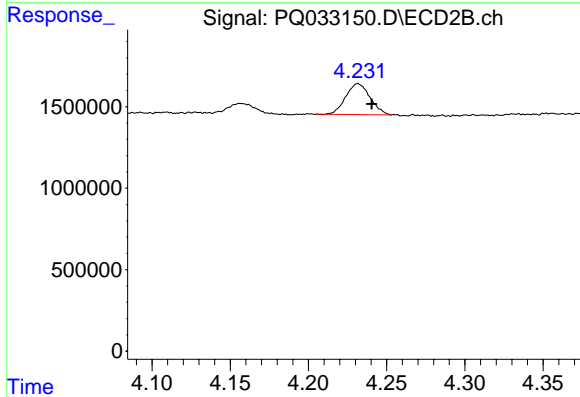
#10 AR-1221-3

R.T.: 4.232 min  
 Delta R.T.: -0.008 min  
 Response: 2061548  
 Conc: 45.08 ng/ml

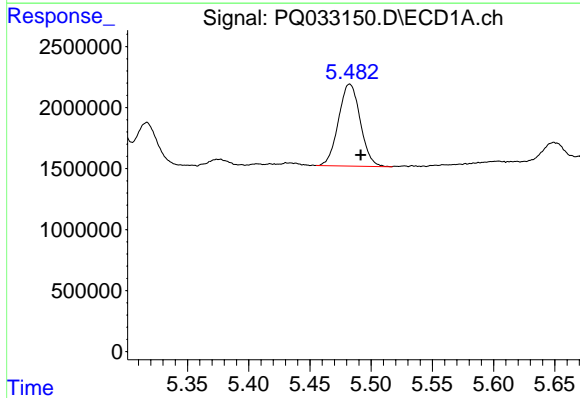


#11 AR-1232-1  
 R.T.: 4.950 min  
 Delta R.T.: -0.008 min  
 Response: 2310324  
 Conc: 52.04 ng/ml

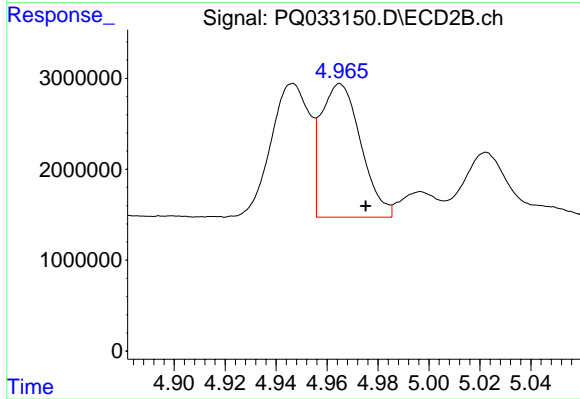
Instrument :  
 ECD\_Q  
 ClientSampleId :



#11 AR-1232-1  
 R.T.: 4.232 min  
 Delta R.T.: -0.009 min  
 Response: 2061548  
 Conc: 59.57 ng/ml

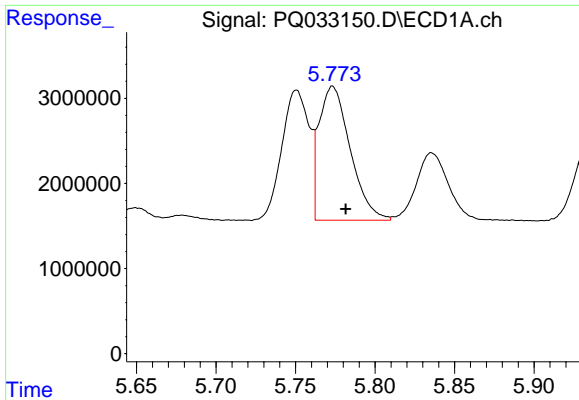


#12 AR-1232-2  
 R.T.: 5.483 min  
 Delta R.T.: -0.009 min  
 Response: 8302040  
 Conc: 351.50 ng/ml



#12 AR-1232-2  
 R.T.: 4.965 min  
 Delta R.T.: -0.010 min  
 Response: 15931064  
 Conc: 423.67 ng/ml

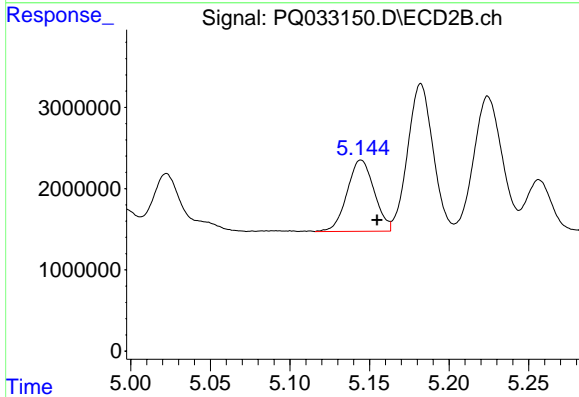




#13 AR-1232-3

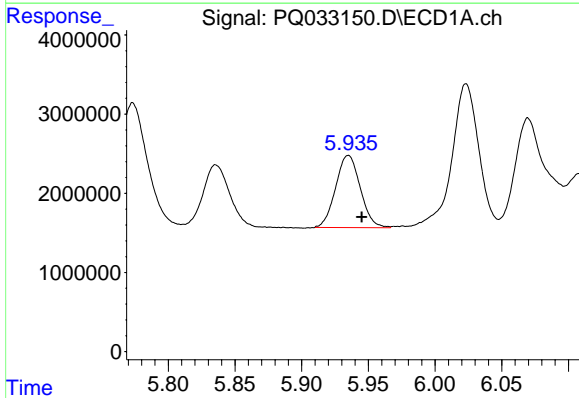
R.T.: 5.773 min  
 Delta R.T.: -0.008 min  
 Response: 21480903  
 Conc: 449.30 ng/ml

Instrument :  
 ECD\_Q  
 ClientSampleId :



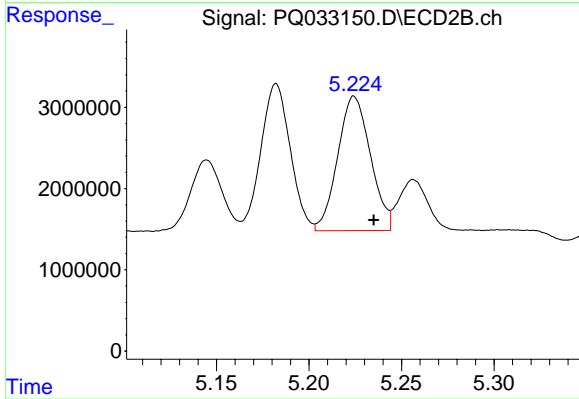
#13 AR-1232-3

R.T.: 5.145 min  
 Delta R.T.: -0.010 min  
 Response: 10381816  
 Conc: 530.07 ng/ml



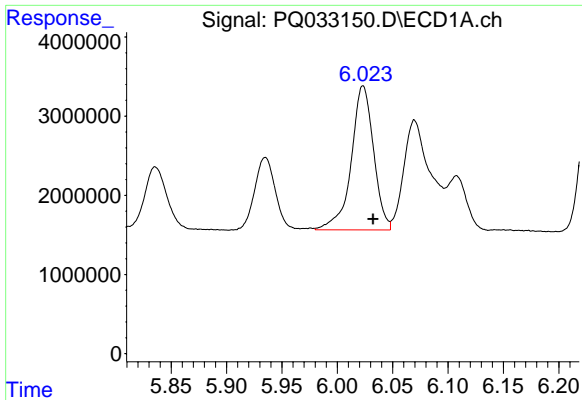
#14 AR-1232-4

R.T.: 5.935 min  
 Delta R.T.: -0.010 min  
 Response: 11728047  
 Conc: 492.38 ng/ml



#14 AR-1232-4

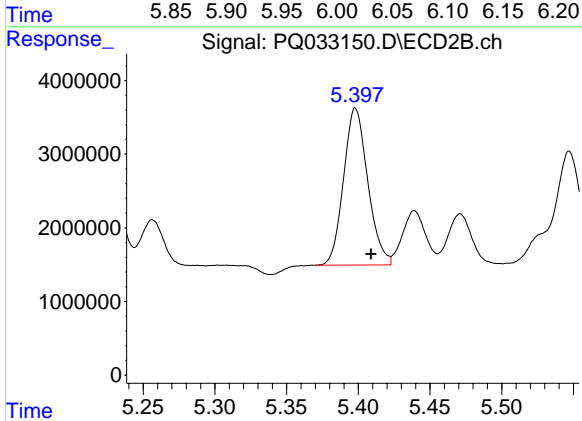
R.T.: 5.224 min  
 Delta R.T.: -0.011 min  
 Response: 20374696  
 Conc: 1187.11 ng/ml



#15 AR-1232-5

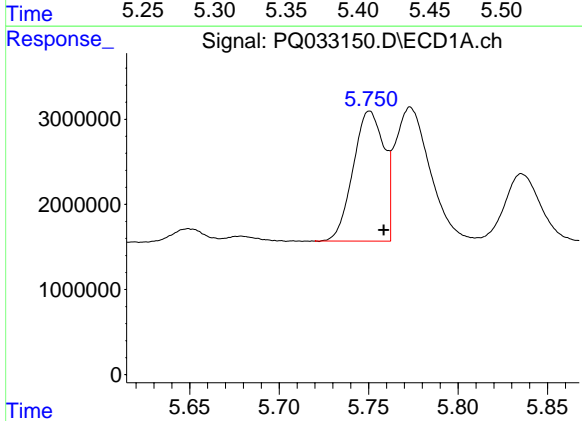
R.T.: 6.023 min  
 Delta R.T.: -0.009 min  
 Response: 25584925  
 Conc: 1434.60 ng/ml

Instrument :  
 ECD\_Q  
 ClientSampled :



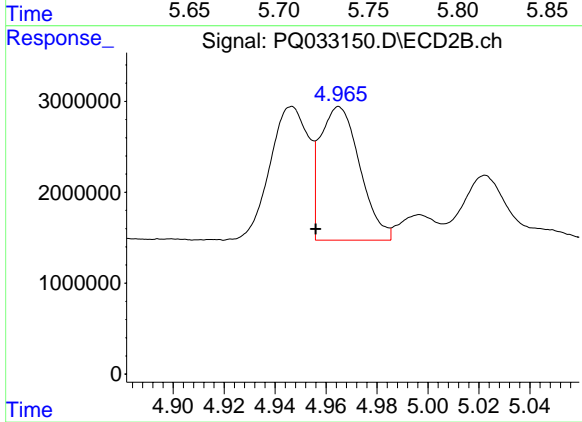
#15 AR-1232-5

R.T.: 5.398 min  
 Delta R.T.: -0.011 min  
 Response: 25082716  
 Conc: 1286.29 ng/ml



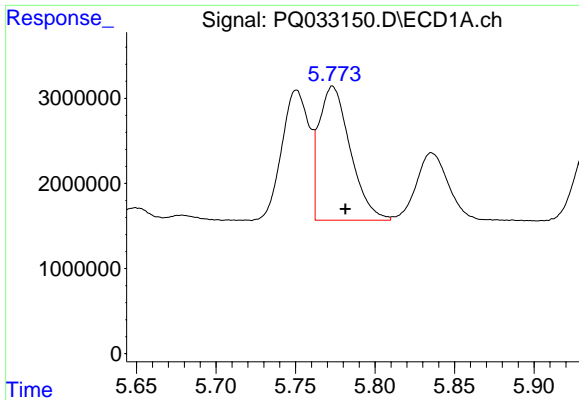
#16 AR-1242-1

R.T.: 5.751 min  
 Delta R.T.: -0.008 min  
 Response: 18351401  
 Conc: 307.51 ng/ml



#16 AR-1242-1

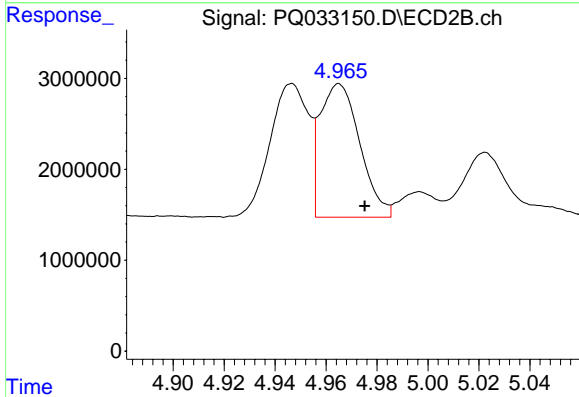
R.T.: 4.965 min  
 Delta R.T.: 0.009 min  
 Response: 15931064  
 Conc: 327.41 ng/ml



#17 AR-1242-2

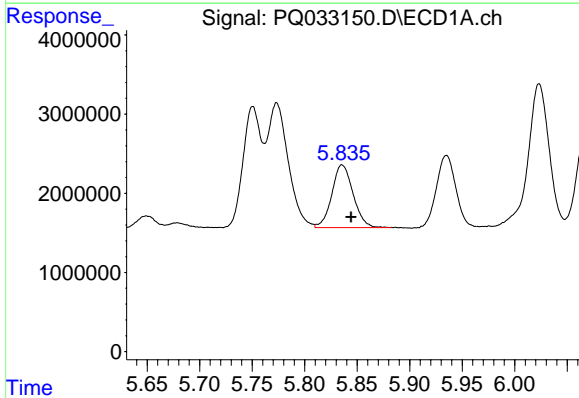
R.T.: 5.773 min  
 Delta R.T.: -0.008 min  
 Response: 21480903  
 Conc: 247.34 ng/ml

Instrument :  
 ECD\_Q  
 ClientSampleId :



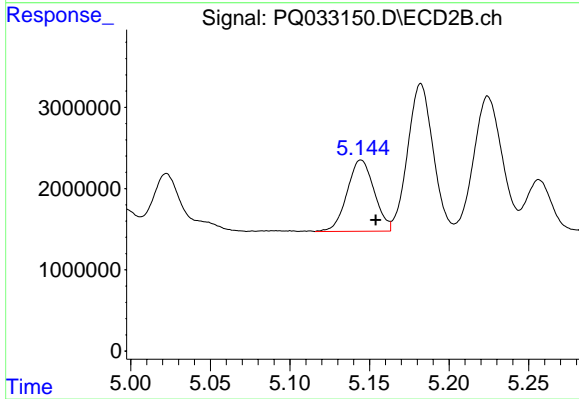
#17 AR-1242-2

R.T.: 4.965 min  
 Delta R.T.: -0.010 min  
 Response: 15931064  
 Conc: 236.02 ng/ml



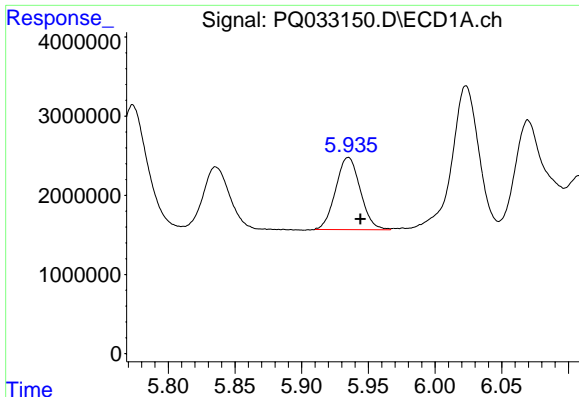
#18 AR-1242-3

R.T.: 5.835 min  
 Delta R.T.: -0.009 min  
 Response: 11138706  
 Conc: 213.02 ng/ml



#18 AR-1242-3

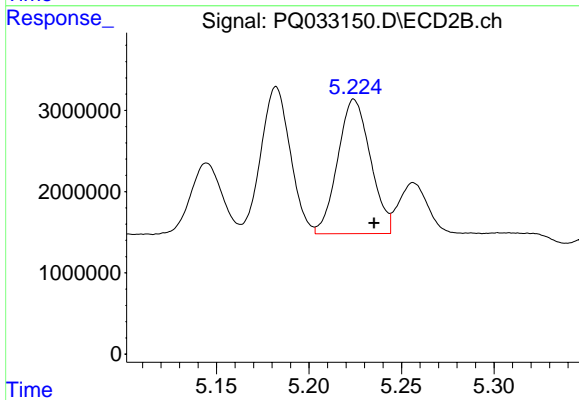
R.T.: 5.145 min  
 Delta R.T.: -0.009 min  
 Response: 10381816  
 Conc: 283.42 ng/ml



#19 AR-1242-4

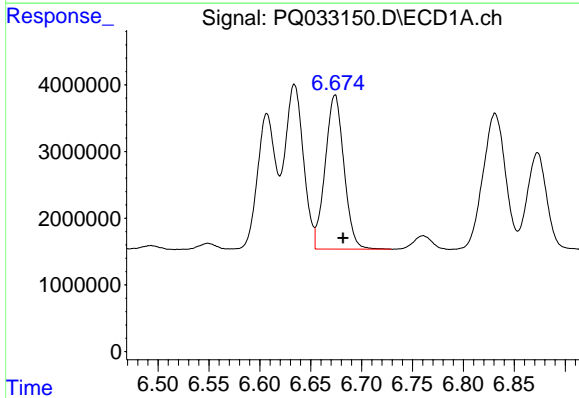
R.T.: 5.935 min  
 Delta R.T.: -0.009 min  
 Response: 11728047  
 Conc: 271.96 ng/ml

Instrument :  
 ECD\_Q  
 ClientSampled :



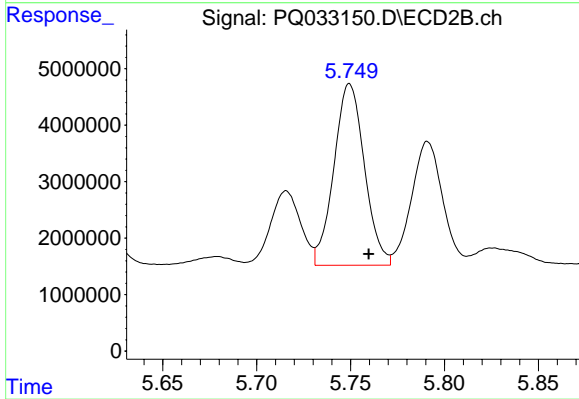
#19 AR-1242-4

R.T.: 5.224 min  
 Delta R.T.: -0.011 min  
 Response: 20374696  
 Conc: 553.16 ng/ml



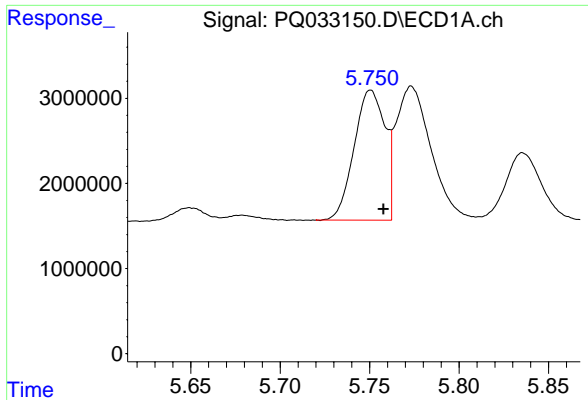
#20 AR-1242-5

R.T.: 6.674 min  
 Delta R.T.: -0.008 min  
 Response: 29720847  
 Conc: 602.89 ng/ml



#20 AR-1242-5

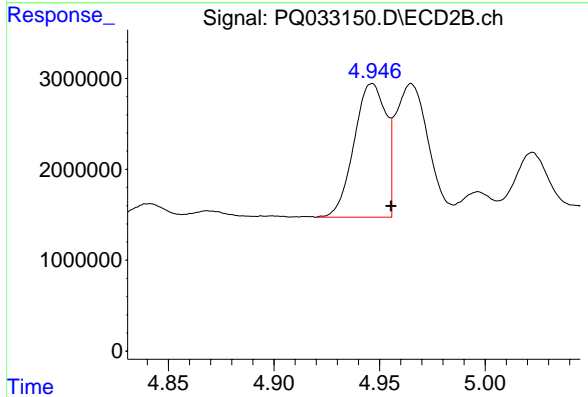
R.T.: 5.749 min  
 Delta R.T.: -0.010 min  
 Response: 36393933  
 Conc: 757.58 ng/ml



#21 AR-1248-1

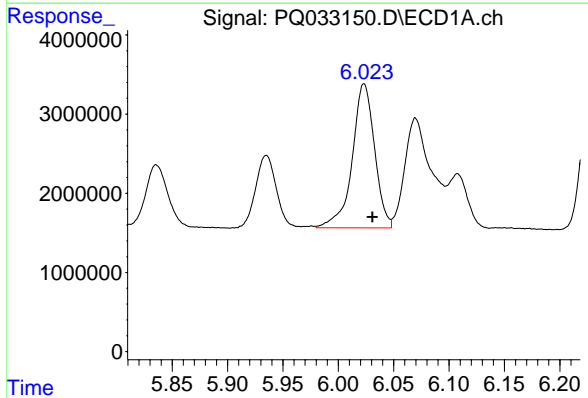
R.T.: 5.751 min  
 Delta R.T.: -0.007 min  
 Response: 18351401  
 Conc: 369.97 ng/ml

Instrument :  
 ECD\_Q  
 ClientSampleId :



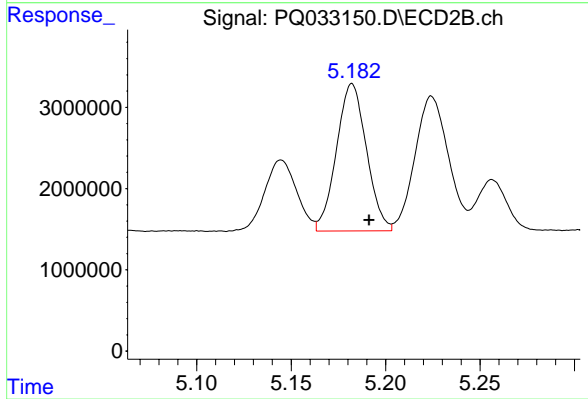
#21 AR-1248-1

R.T.: 4.947 min  
 Delta R.T.: -0.009 min  
 Response: 15467214  
 Conc: 377.43 ng/ml



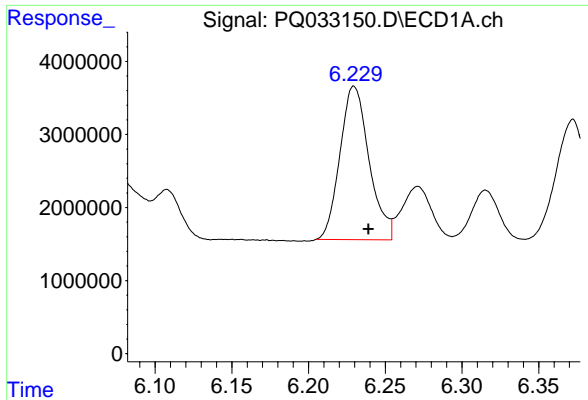
#22 AR-1248-2

R.T.: 6.023 min  
 Delta R.T.: -0.008 min  
 Response: 25584925  
 Conc: 347.85 ng/ml



#22 AR-1248-2

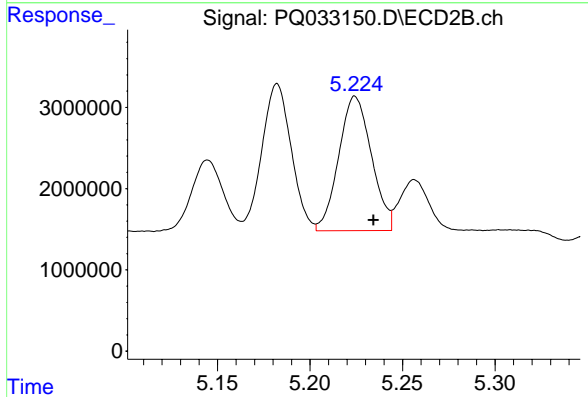
R.T.: 5.182 min  
 Delta R.T.: -0.009 min  
 Response: 20058186  
 Conc: 365.10 ng/ml



#23 AR-1248-3

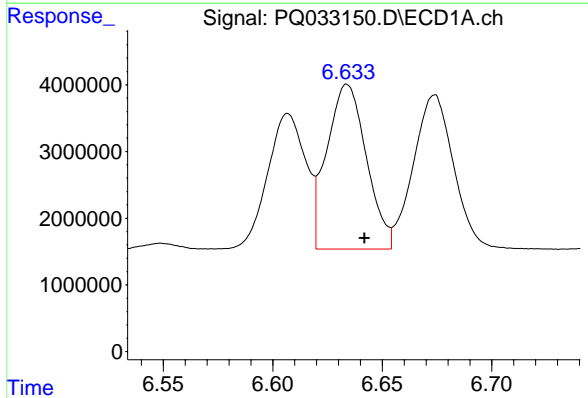
R.T.: 6.230 min  
 Delta R.T.: -0.009 min  
 Response: 27771349  
 Conc: 339.82 ng/ml

Instrument :  
 ECD\_Q  
 ClientSampled :



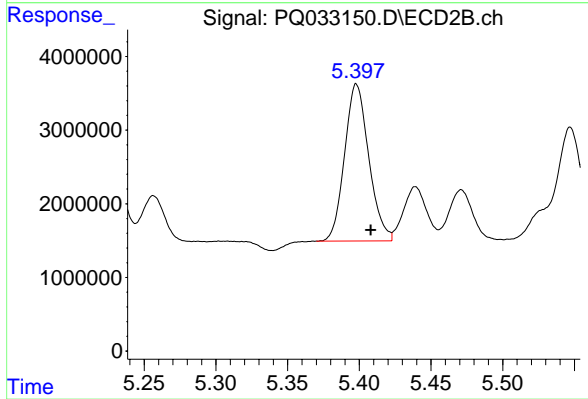
#23 AR-1248-3

R.T.: 5.224 min  
 Delta R.T.: -0.010 min  
 Response: 20374696  
 Conc: 363.82 ng/ml



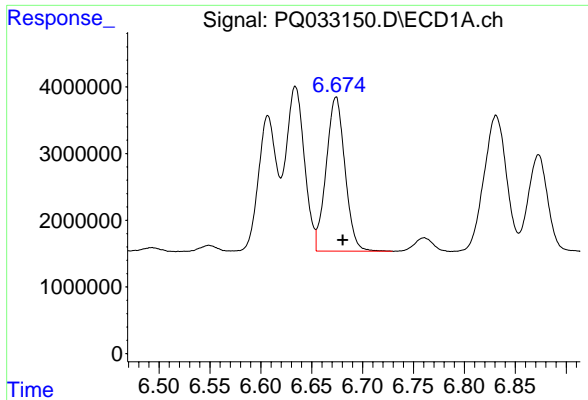
#24 AR-1248-4

R.T.: 6.634 min  
 Delta R.T.: -0.008 min  
 Response: 31065541  
 Conc: 331.64 ng/ml



#24 AR-1248-4

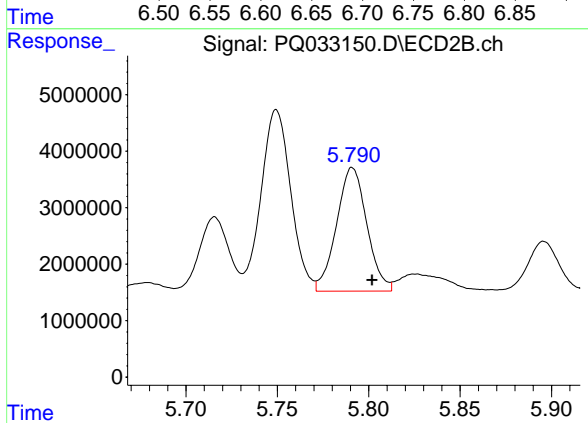
R.T.: 5.398 min  
 Delta R.T.: -0.010 min  
 Response: 25082716  
 Conc: 363.68 ng/ml



#25 AR-1248-5

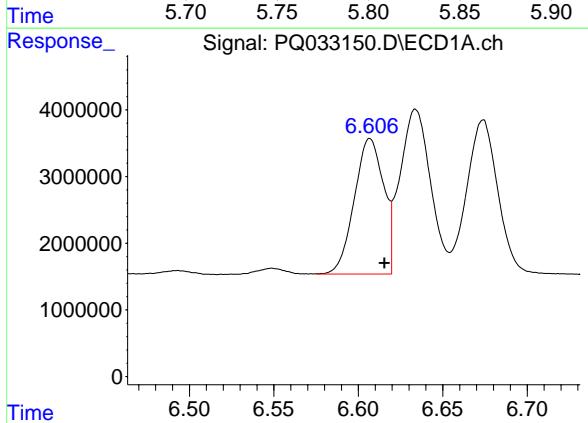
R.T.: 6.674 min  
 Delta R.T.: -0.006 min  
 Response: 29720847  
 Conc: 334.66 ng/ml

Instrument :  
 ECD\_Q  
 ClientSampled :



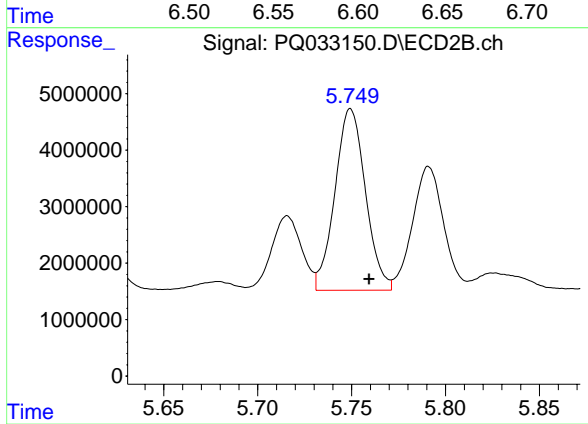
#25 AR-1248-5

R.T.: 5.791 min  
 Delta R.T.: -0.011 min  
 Response: 25247907  
 Conc: 365.24 ng/ml



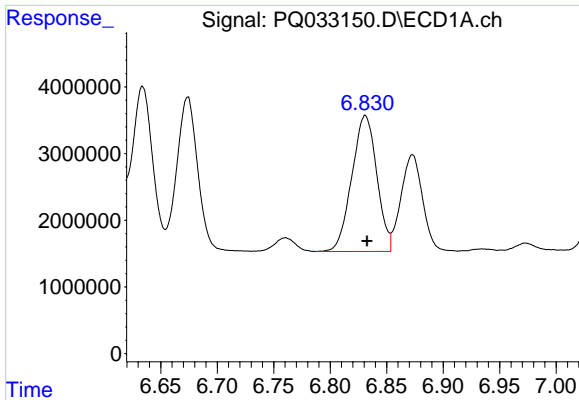
#26 AR-1254-1

R.T.: 6.607 min  
 Delta R.T.: -0.008 min  
 Response: 24544713  
 Conc: 247.67 ng/ml



#26 AR-1254-1

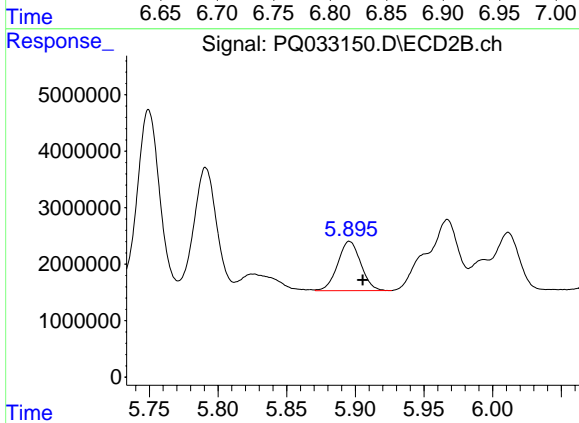
R.T.: 5.749 min  
 Delta R.T.: -0.010 min  
 Response: 36393933  
 Conc: 323.04 ng/ml



#27 AR-1254-2

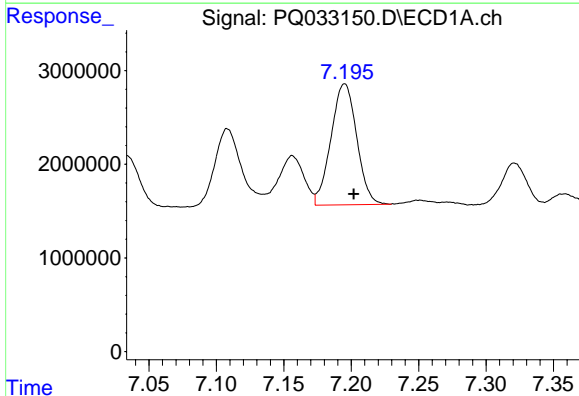
R.T.: 6.831 min  
 Delta R.T.: -0.002 min  
 Response: 31336445  
 Conc: 200.52 ng/ml

Instrument :  
 ECD\_Q  
 ClientSampled :



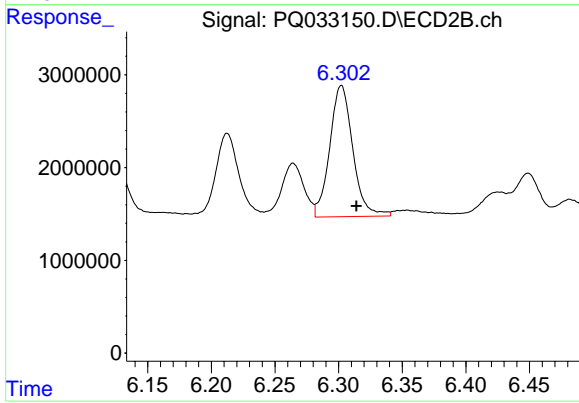
#27 AR-1254-2

R.T.: 5.896 min  
 Delta R.T.: -0.009 min  
 Response: 10216485  
 Conc: 103.46 ng/ml



#28 AR-1254-3

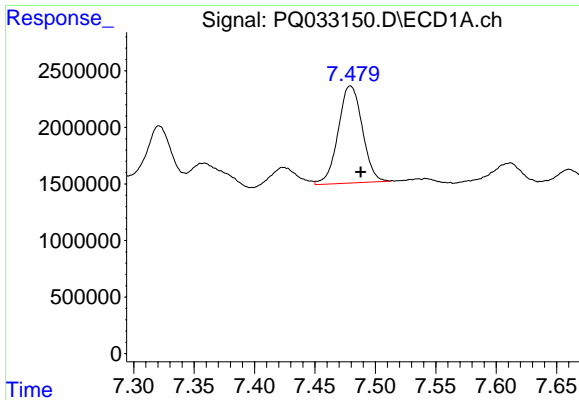
R.T.: 7.195 min  
 Delta R.T.: -0.007 min  
 Response: 17190961  
 Conc: 101.31 ng/ml



#28 AR-1254-3

R.T.: 6.302 min  
 Delta R.T.: -0.012 min  
 Response: 17892160  
 Conc: 107.66 ng/ml

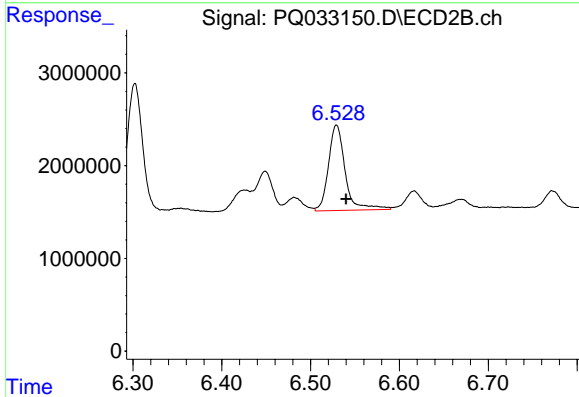




#29 AR-1254-4

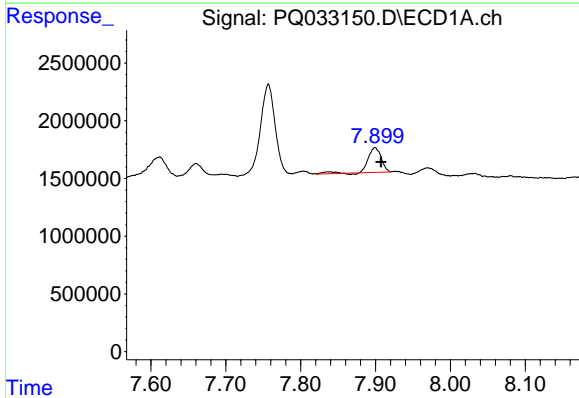
R.T.: 7.479 min  
 Delta R.T.: -0.009 min  
 Response: 11908855  
 Conc: 96.45 ng/ml

Instrument :  
 ECD\_Q  
 ClientSampleId :



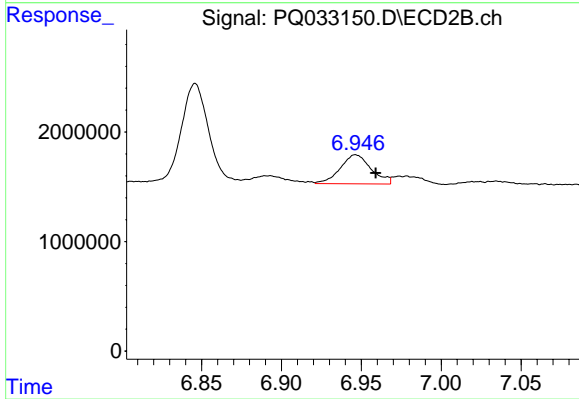
#29 AR-1254-4

R.T.: 6.529 min  
 Delta R.T.: -0.011 min  
 Response: 12105146  
 Conc: 113.77 ng/ml



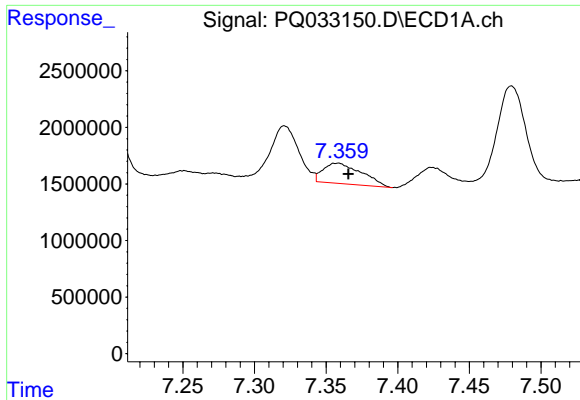
#30 AR-1254-5

R.T.: 7.899 min  
 Delta R.T.: -0.008 min  
 Response: 2688342  
 Conc: 20.31 ng/ml



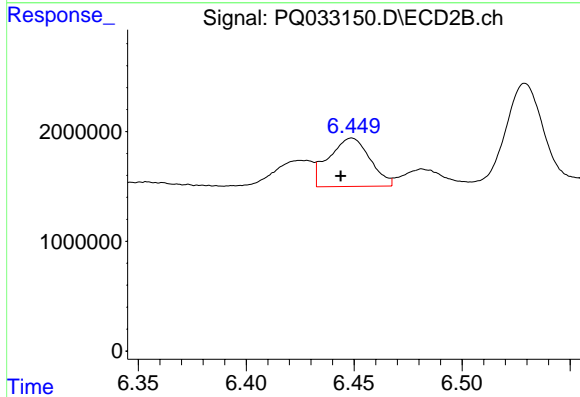
#30 AR-1254-5

R.T.: 6.947 min  
 Delta R.T.: -0.012 min  
 Response: 3592068  
 Conc: 24.45 ng/ml

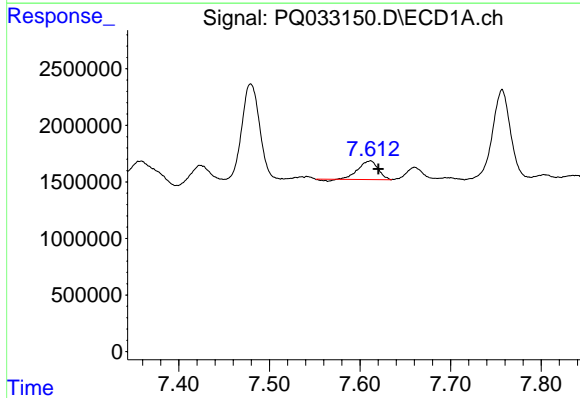


#31 AR-1260-1  
 R.T.: 7.358 min  
 Delta R.T.: -0.007 min  
 Response: 3384850  
 Conc: 31.65 ng/ml

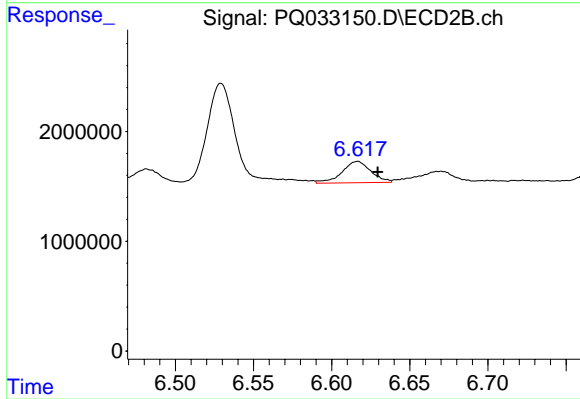
Instrument :  
 ECD\_Q  
 ClientSampleId :



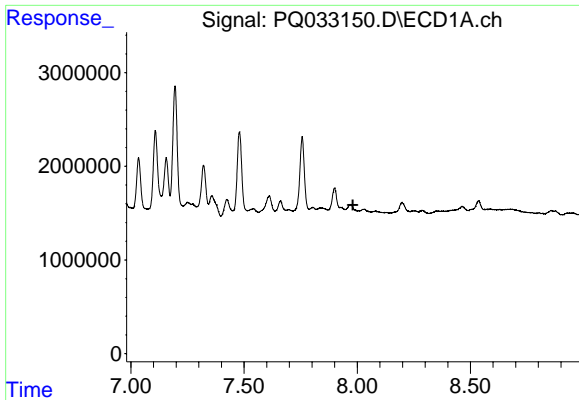
#31 AR-1260-1  
 R.T.: 6.449 min  
 Delta R.T.: 0.005 min  
 Response: 5856002  
 Conc: 62.35 ng/ml



#32 AR-1260-2  
 R.T.: 7.612 min  
 Delta R.T.: -0.009 min  
 Response: 2473696  
 Conc: 19.59 ng/ml



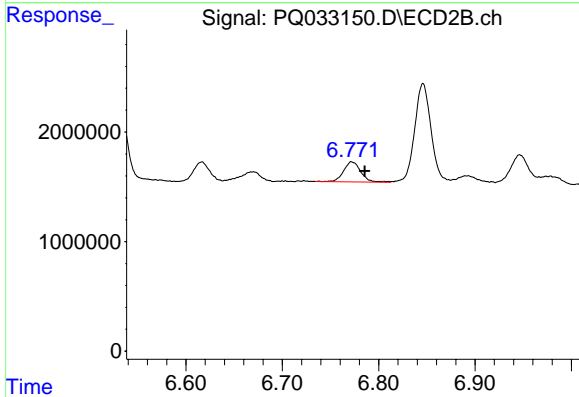
#32 AR-1260-2  
 R.T.: 6.617 min  
 Delta R.T.: -0.013 min  
 Response: 2508033  
 Conc: 21.53 ng/ml



#33 AR-1260-3

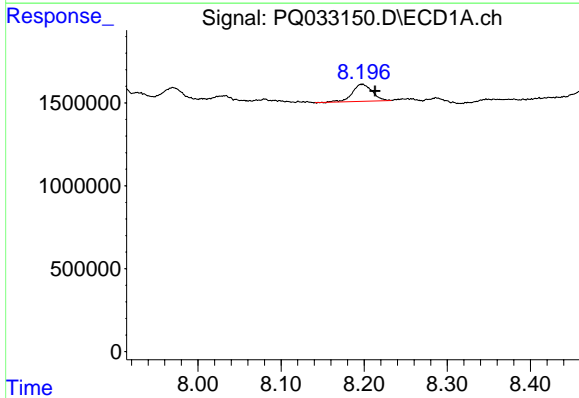
R.T.: 0.000 min  
 Exp R.T.: 7.981 min  
 Response: 0  
 Conc: N.D.

Instrument :  
 ECD\_Q  
 ClientSampled :



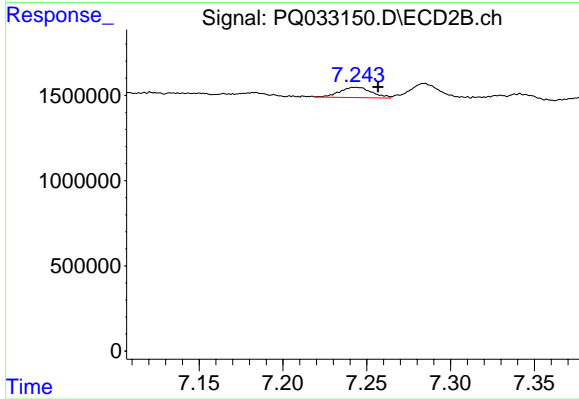
#33 AR-1260-3

R.T.: 6.772 min  
 Delta R.T.: -0.013 min  
 Response: 2302890  
 Conc: 21.35 ng/ml



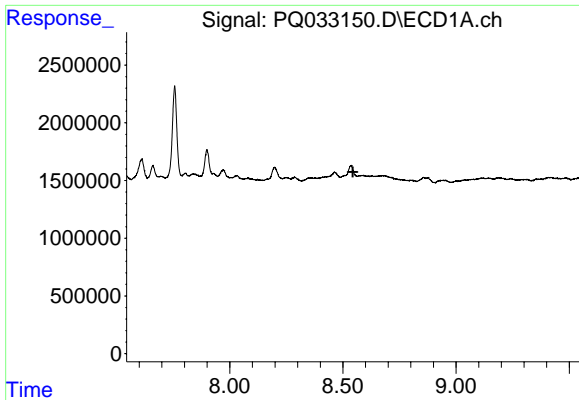
#34 AR-1260-4

R.T.: 8.197 min  
 Delta R.T.: -0.016 min  
 Response: 1692031  
 Conc: 16.72 ng/ml



#34 AR-1260-4

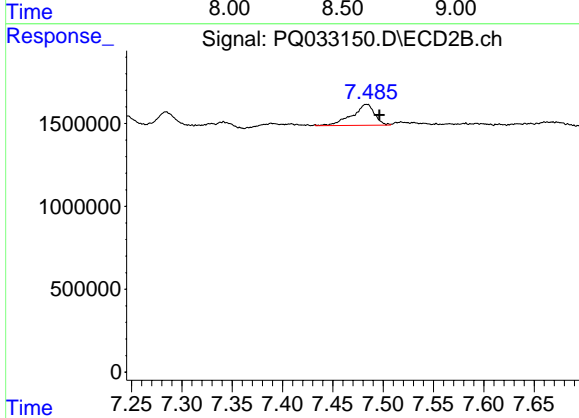
R.T.: 7.243 min  
 Delta R.T.: -0.013 min  
 Response: 796316  
 Conc: 10.36 ng/ml



#35 AR-1260-5

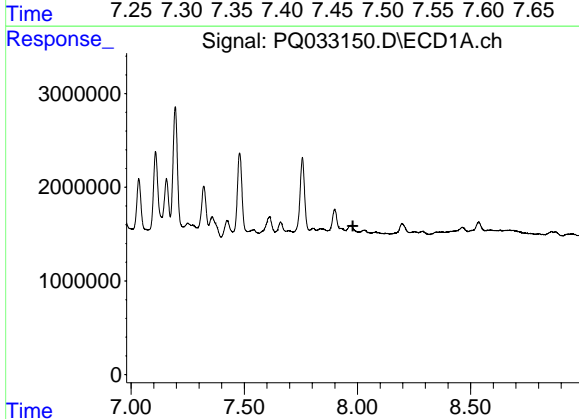
R.T.: 0.000 min  
 Exp R.T. : 8.544 min  
 Response: 0  
 Conc: N.D.

Instrument :  
 ECD\_Q  
 ClientSampleId :



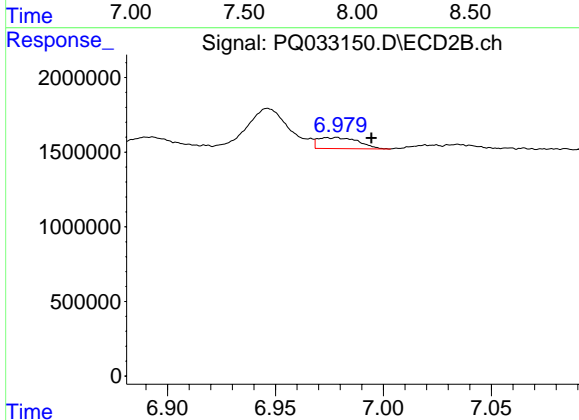
#35 AR-1260-5

R.T.: 7.484 min  
 Delta R.T.: -0.012 min  
 Response: 1975656  
 Conc: 10.28 ng/ml



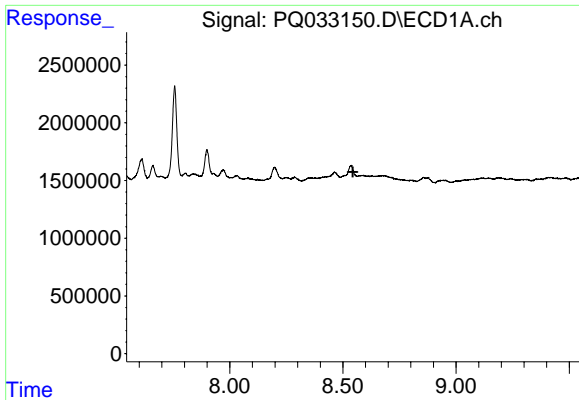
#36 AR-1262-1

R.T.: 0.000 min  
 Exp R.T. : 7.980 min  
 Response: 0  
 Conc: N.D.



#36 AR-1262-1

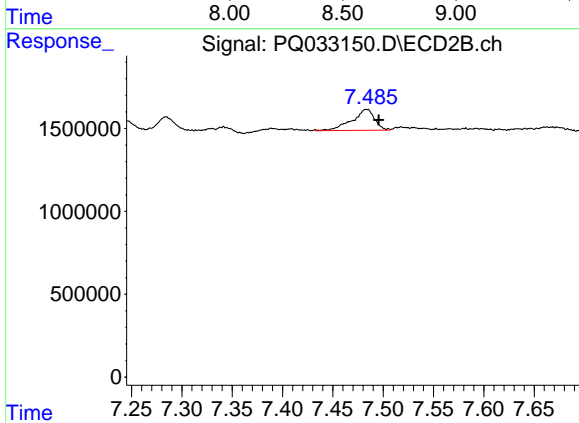
R.T.: 6.978 min  
 Delta R.T.: -0.016 min  
 Response: 970620  
 Conc: 7.55 ng/ml



#37 AR-1262-2

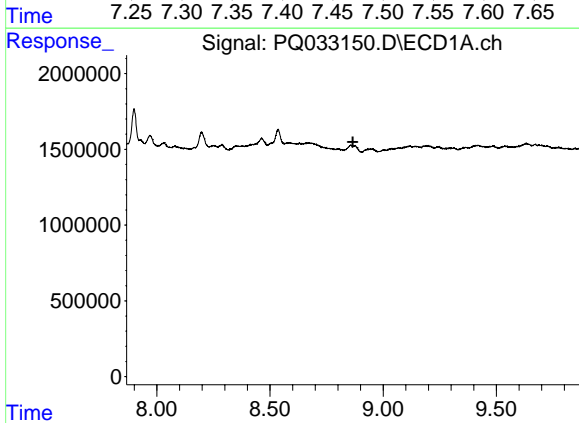
R.T.: 0.000 min  
 Exp R.T. : 8.544 min  
 Response: 0  
 Conc: N.D.

Instrument :  
 ECD\_Q  
 ClientSampled :



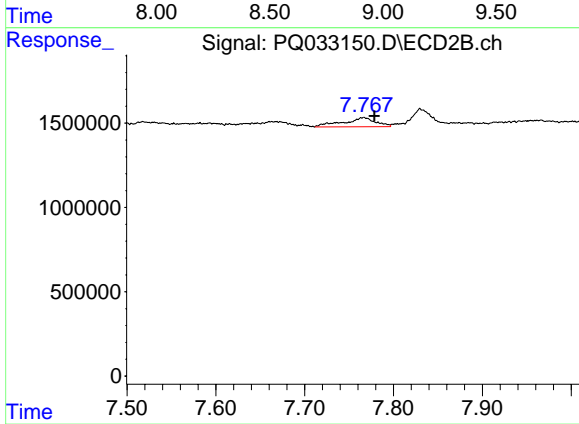
#37 AR-1262-2

R.T.: 7.484 min  
 Delta R.T.: -0.012 min  
 Response: 1975656  
 Conc: 8.25 ng/ml



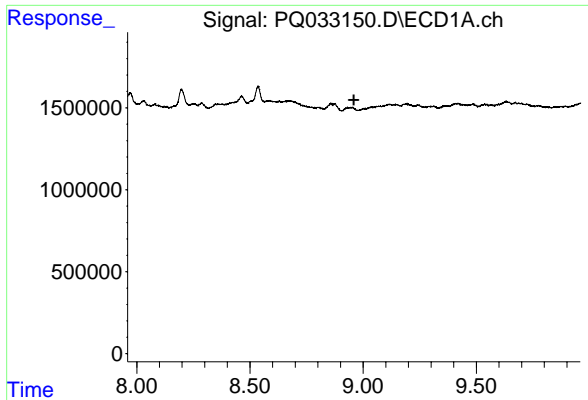
#38 AR-1262-3

R.T.: 0.000 min  
 Exp R.T. : 8.866 min  
 Response: 0  
 Conc: N.D.



#38 AR-1262-3

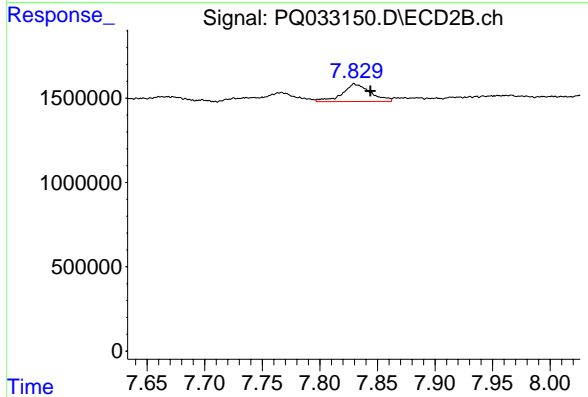
R.T.: 7.767 min  
 Delta R.T.: -0.012 min  
 Response: 1379801  
 Conc: 14.81 ng/ml



#39 AR-1262-4

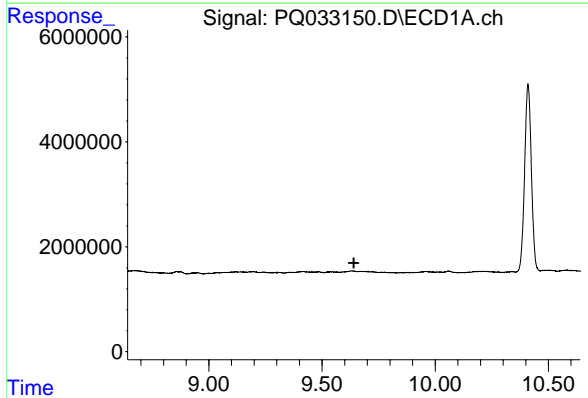
R.T.: 0.000 min  
 Exp R.T.: 8.959 min  
 Response: 0  
 Conc: N.D.

Instrument :  
 ECD\_Q  
 ClientSampled :



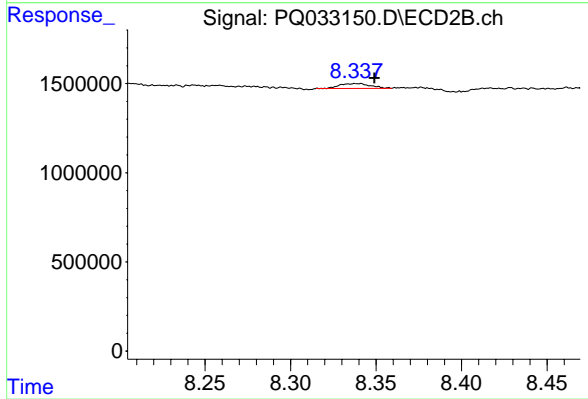
#39 AR-1262-4

R.T.: 7.830 min  
 Delta R.T.: -0.014 min  
 Response: 1767114  
 Conc: 10.15 ng/ml



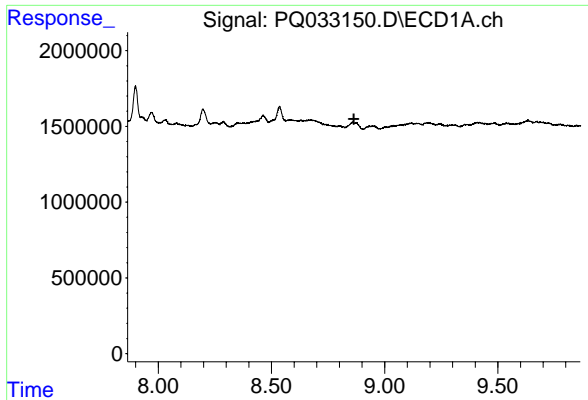
#40 AR-1262-5

R.T.: 0.000 min  
 Exp R.T.: 9.640 min  
 Response: 0  
 Conc: N.D.



#40 AR-1262-5

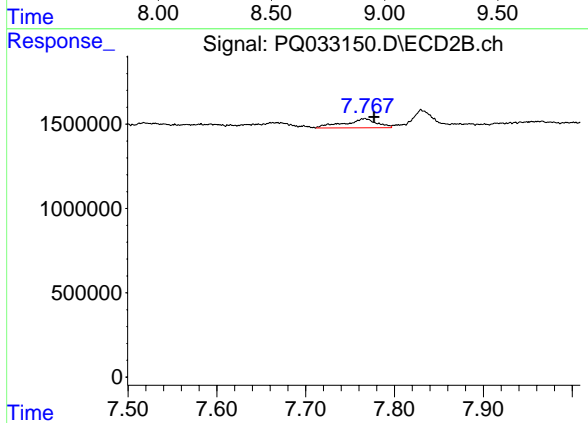
R.T.: 8.340 min  
 Delta R.T.: -0.009 min  
 Response: 346601  
 Conc: 4.30 ng/ml



#41 AR-1268-1

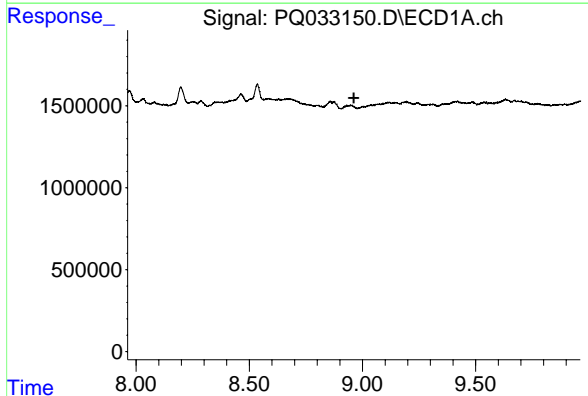
R.T.: 0.000 min  
 Exp R.T.: 8.864 min  
 Response: 0  
 Conc: N.D.

Instrument :  
 ECD\_Q  
 ClientSampled :



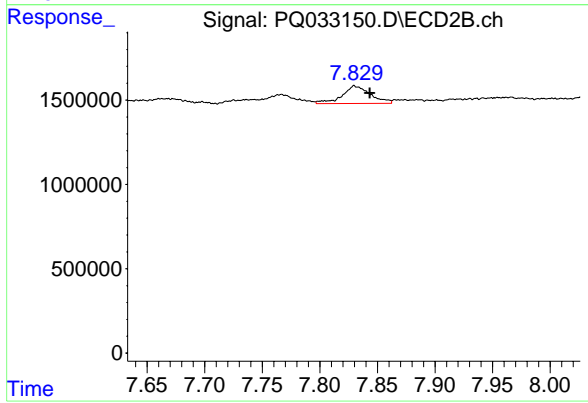
#41 AR-1268-1

R.T.: 7.767 min  
 Delta R.T.: -0.010 min  
 Response: 1379801  
 Conc: 4.04 ng/ml



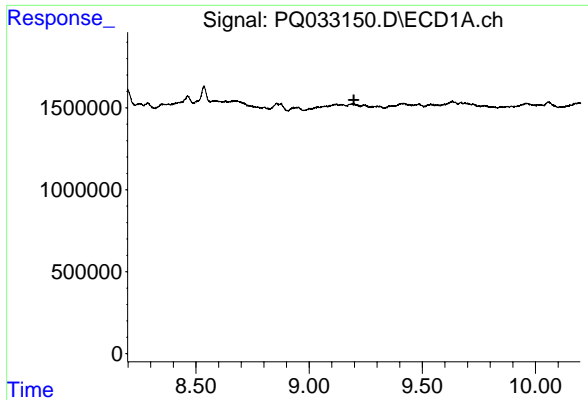
#42 AR-1268-2

R.T.: 0.000 min  
 Exp R.T.: 8.962 min  
 Response: 0  
 Conc: N.D.



#42 AR-1268-2

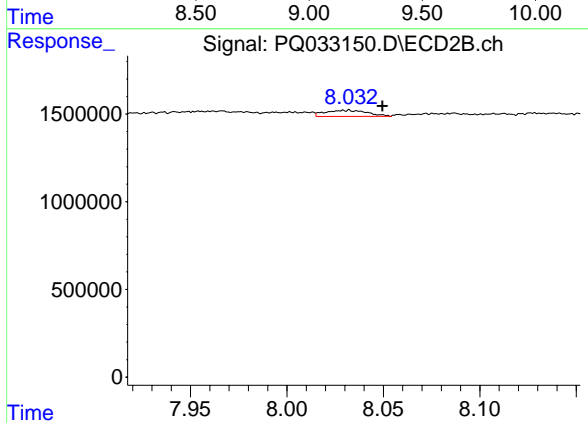
R.T.: 7.830 min  
 Delta R.T.: -0.013 min  
 Response: 1767114  
 Conc: 5.72 ng/ml



#43 AR-1268-3

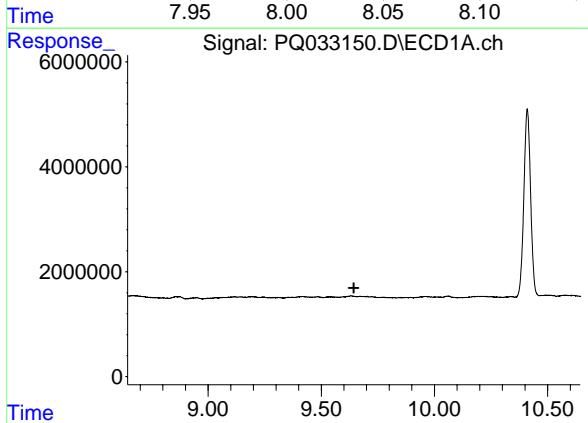
R.T.: 0.000 min  
 Exp R.T.: 9.197 min  
 Response: 0  
 Conc: N.D.

Instrument :  
 ECD\_Q  
 ClientSampleId :



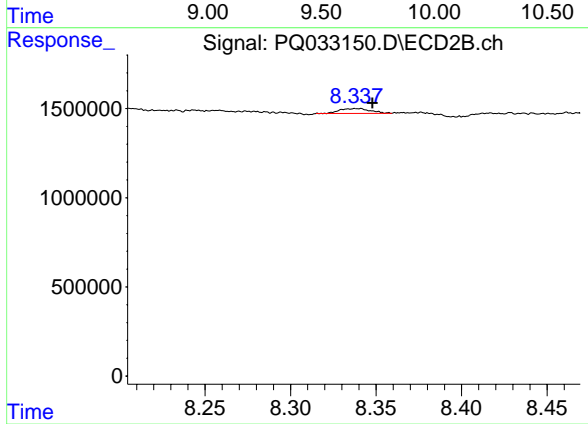
#43 AR-1268-3

R.T.: 8.032 min  
 Delta R.T.: -0.018 min  
 Response: 535447  
 Conc: 2.09 ng/ml



#44 AR-1268-4

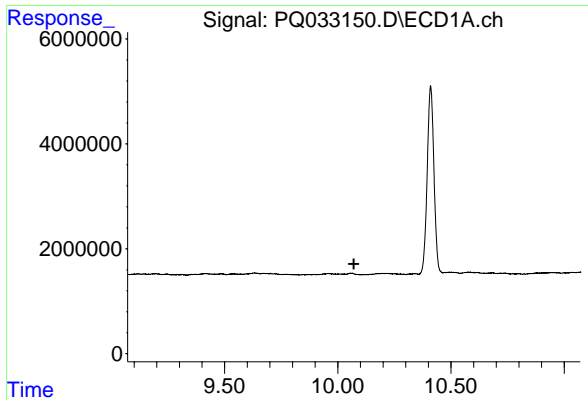
R.T.: 0.000 min  
 Exp R.T.: 9.644 min  
 Response: 0  
 Conc: N.D.



#44 AR-1268-4

R.T.: 8.340 min  
 Delta R.T.: -0.008 min  
 Response: 346601  
 Conc: 3.14 ng/ml

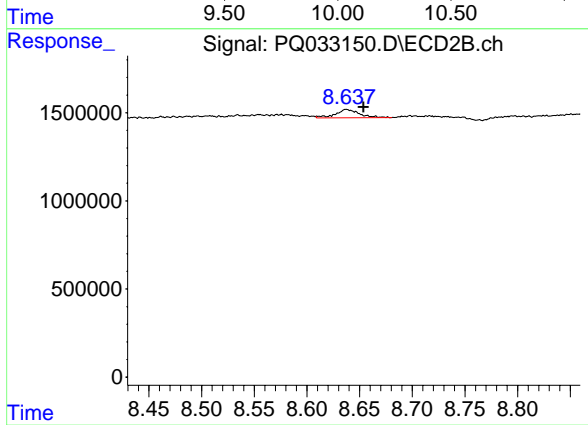




#45 AR-1268-5

R.T.: 0.000 min  
Exp R.T.: 10.071 min  
Response: 0  
Conc: N.D.

Instrument :  
ECD\_Q  
ClientSampleId :



#45 AR-1268-5

R.T.: 8.637 min  
Delta R.T.: -0.016 min  
Response: 744149  
Conc: 0.89 ng/ml