

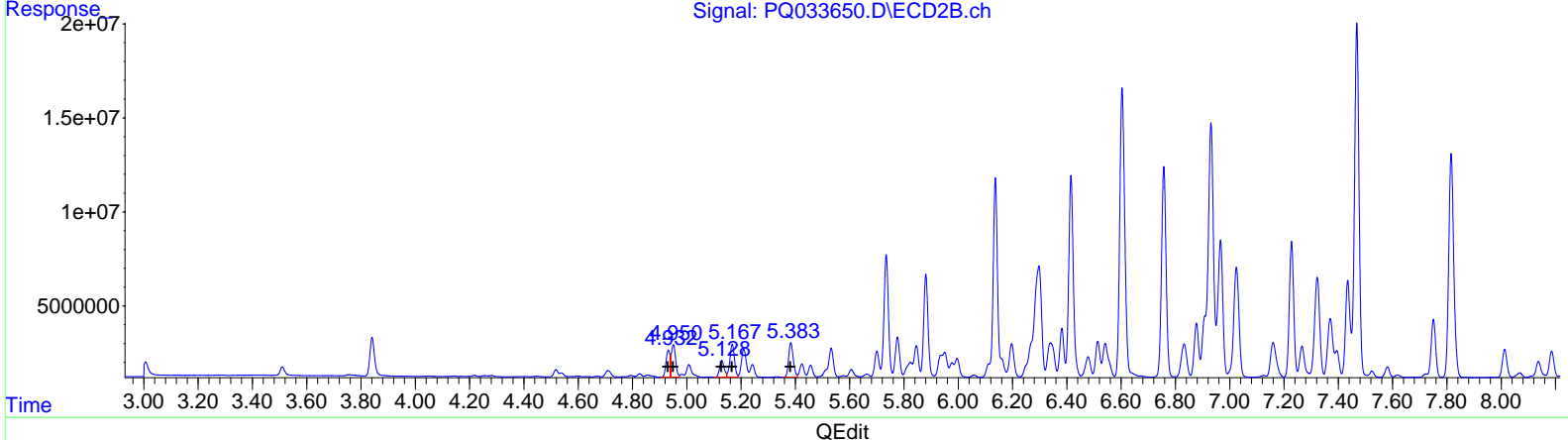
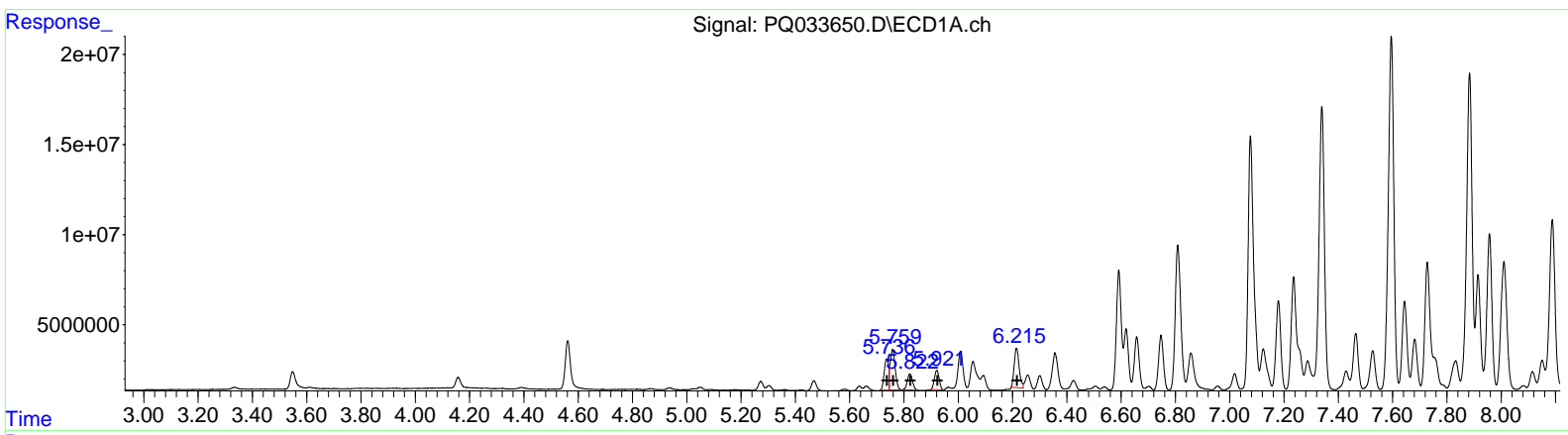
Data Path : Z:\pestpcbsrv\HPCHEM1\ECD_Q\Data\PQ102618\
 Data File : PQ033650.D
 Signal(s) : Signal #1: ECD1A.ch Signal #2: ECD2B.ch
 Acq On : 26 Oct 2018 04:39
 Operator : SM\SJ
 Sample : J5674-06
 Misc :
 ALS Vial : 39 Sample Multiplier: 1

Instrument :
 ECD_Q
ClientSampled :
 COBM9

Manual Integrations
APPROVED
 sohil
 10/30/2018 1:53:24 AM

Integration File signal 1: autoint1.e
 Integration File signal 2: autoint2.e
 Quant Time: Oct 31 05:28:58 2018
 Quant Method : Z:\pestpcbsrv\HPCHEM1\ECD_Q\Method\PQ100918CLP.M
 Quant Title : GC EXTRACTABLES
 QLast Update : Tue Oct 30 17:29:03 2018
 Response via : Initial Calibration
 Integrator: ChemStation

Volume Inj. : 1 µl
 Signal #1 Phase : ZB MR1 Signal #2 Phase: ZB MR2
 Signal #1 Info : 30Mx0.32mmx 0.5µm Signal #2 Info : 30M x 0.32mm x 0.25µm



(3) AR-1016-1 (L1)

R.T.	Response	Conc
5.74	19218046	276.00
5.76	28546956	277.13
5.82	11838516	189.06
5.92	13097556	259.14
6.22	27585592	535.32

(3) AR-1016-1 #2 (L1)

R.T.	Response	Conc
4.93	14605930	255.14
4.95	19474302	244.39
5.13	10682463	257.53
5.17	20786526	606.66
5.38	21682961	474.56

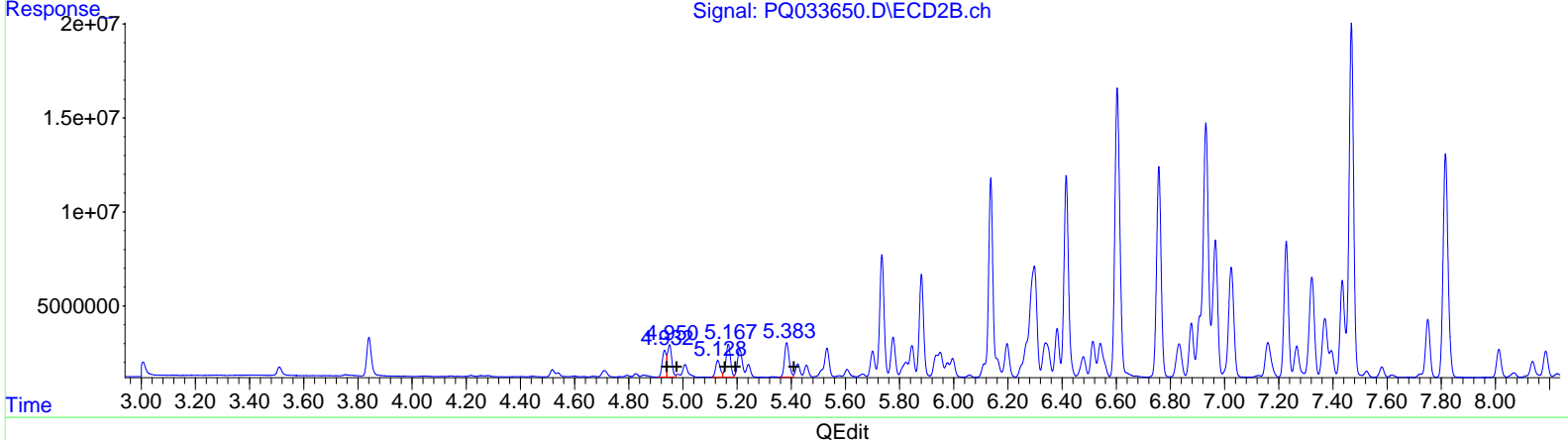
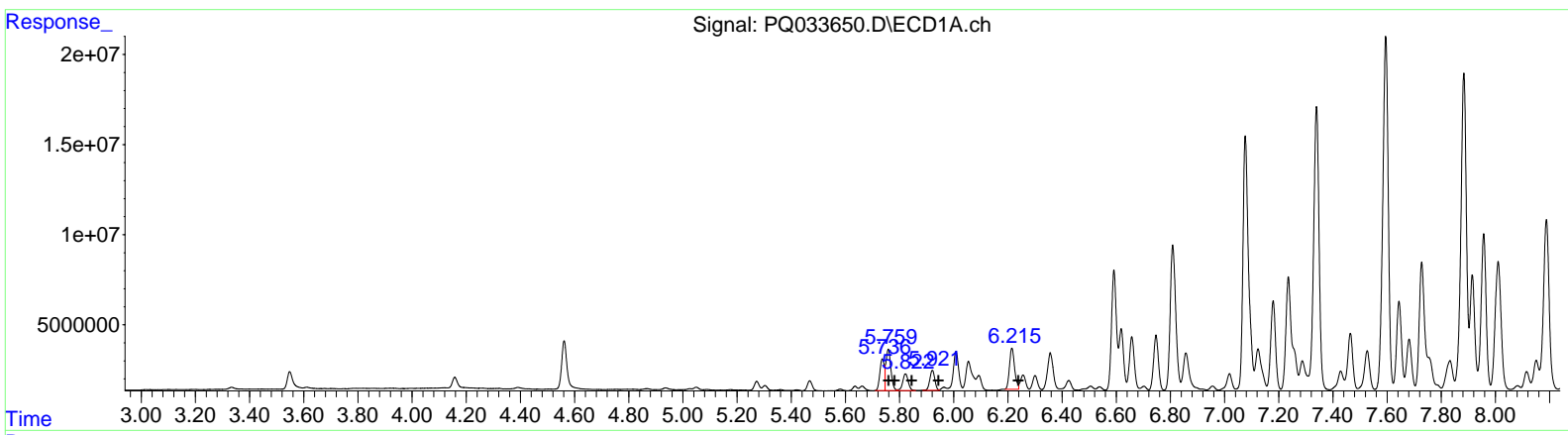
Data Path : Z:\pestpcbsrv\HPCHEM1\ECD_Q\Data\PQ102618\
 Data File : PQ033650.D
 Signal(s) : Signal #1: ECD1A.ch Signal #2: ECD2B.ch
 Acq On : 26 Oct 2018 04:39
 Operator : SM\SJ
 Sample : J5674-06
 Misc :
 ALS Vial : 39 Sample Multiplier: 1

Instrument :
 ECD_Q
Client Sampled :
 COBM9

Manual Integrations
APPROVED
 sohil
 10/30/2018 1:53:24 AM

Integration File signal 1: autoint1.e
 Integration File signal 2: autoint2.e
 Quant Time: Oct 26 13:13:03 2018
 Quant Method : Z:\pestpcbsrv\HPCHEM1\ECD_Q\Method\PQ100918CLP.M
 Quant Title : GC EXTRACTABLES
 QLast Update : Wed Oct 10 08:14:42 2018
 Response via : Initial Calibration
 Integrator: ChemStation

Volume Inj. : 1 µl
 Signal #1 Phase : ZB MR1 Signal #2 Phase: ZB MR2
 Signal #1 Info : 30Mx0.32mmx 0.5µm Signal #2 Info : 30M x 0.32mm x 0.25µm



(3) AR-1016-1 (L1)

R.T.	Response	Conc
5.74	20071849	288.27
5.76	28628666	277.93
5.82	13073116	208.78
5.92	14221862	281.39
6.22	30199766	586.05

(3) AR-1016-1 #2 (L1)

R.T.	Response	Conc
4.93	14454258	252.49
4.95	18103068	227.19
5.13	10498458	253.10
5.17	20729967	605.01
5.38	21923734	479.83

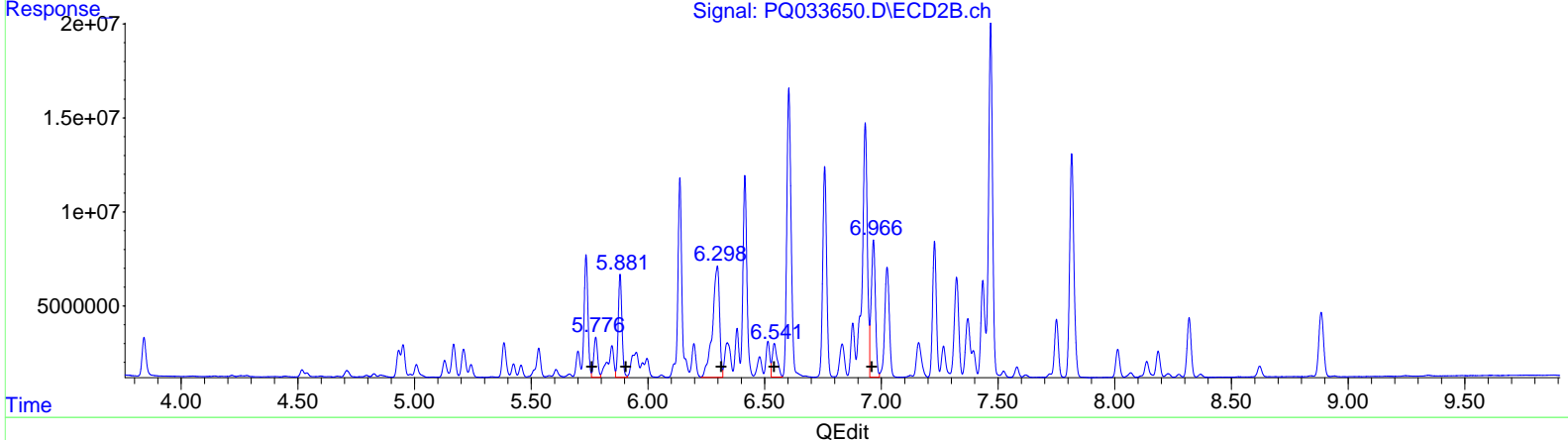
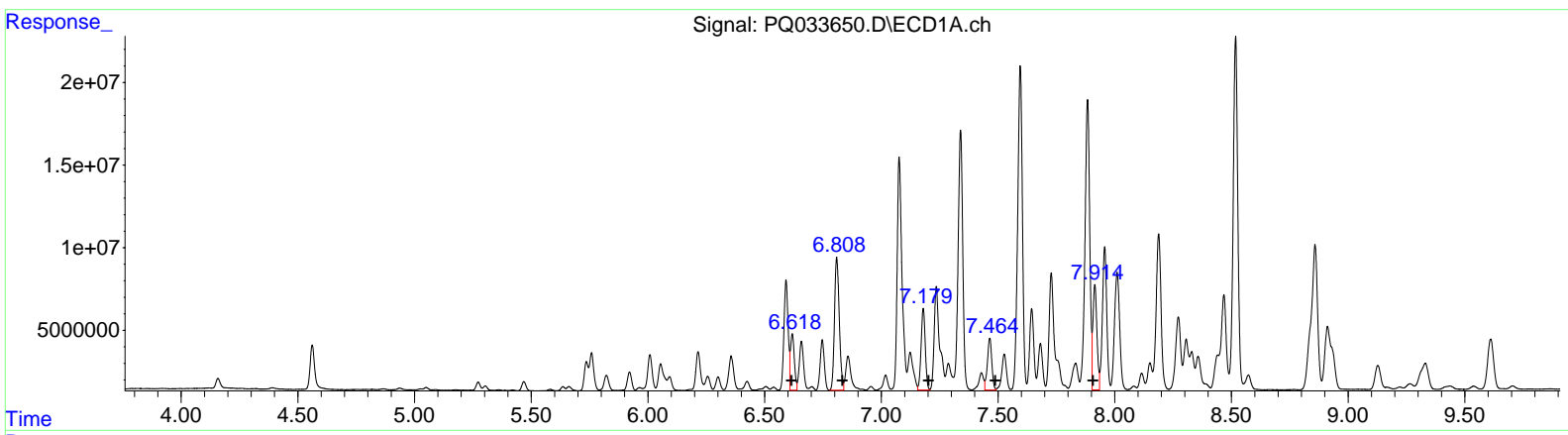
Data Path : Z:\pestpcbsrv\HPCHEM1\ECD_Q\Data\PQ102618\
 Data File : PQ033650.D
 Signal(s) : Signal #1: ECD1A.ch Signal #2: ECD2B.ch
 Acq On : 26 Oct 2018 04:39
 Operator : SM\SJ
 Sample : J5674-06
 Misc :
 ALS Vial : 39 Sample Multiplier: 1

Instrument :
 ECD_Q
Client Sampled :
 COBM9

Manual Integrations
APPROVED
 sohil
 10/30/2018 1:53:24 AM

Integration File signal 1: autoint1.e
 Integration File signal 2: autoint2.e
 Quant Time: Oct 26 06:57:26 2018
 Quant Method : Z:\pestpcbsrv\HPCHEM1\ECD_Q\Method\PQ100918CLP.M
 Quant Title : GC EXTRACTABLES
 QLast Update : Wed Oct 10 08:14:42 2018
 Response via : Initial Calibration
 Integrator: ChemStation

Volume Inj. : 1 µl
 Signal #1 Phase : ZB MR1 Signal #2 Phase: ZB MR2
 Signal #1 Info : 30Mx0.32mmx 0.5µm Signal #2 Info : 30M x 0.32mm x 0.25µm



QEdit

(26) AR-1254-1 (L6)		
R.T.	Response	Conc
6.62	39041338	393.95
6.81	114653555	733.65
7.18	61791443	364.16
7.46	41400168	335.29
7.91	76735452	579.67
(26) AR-1254-1 #2 (L6)		
R.T.	Response	Conc
5.78	24186719	214.69
5.88	61033294	618.09
6.30	124211486	747.40
6.54	26435369	248.46
6.97	92276181	628.22

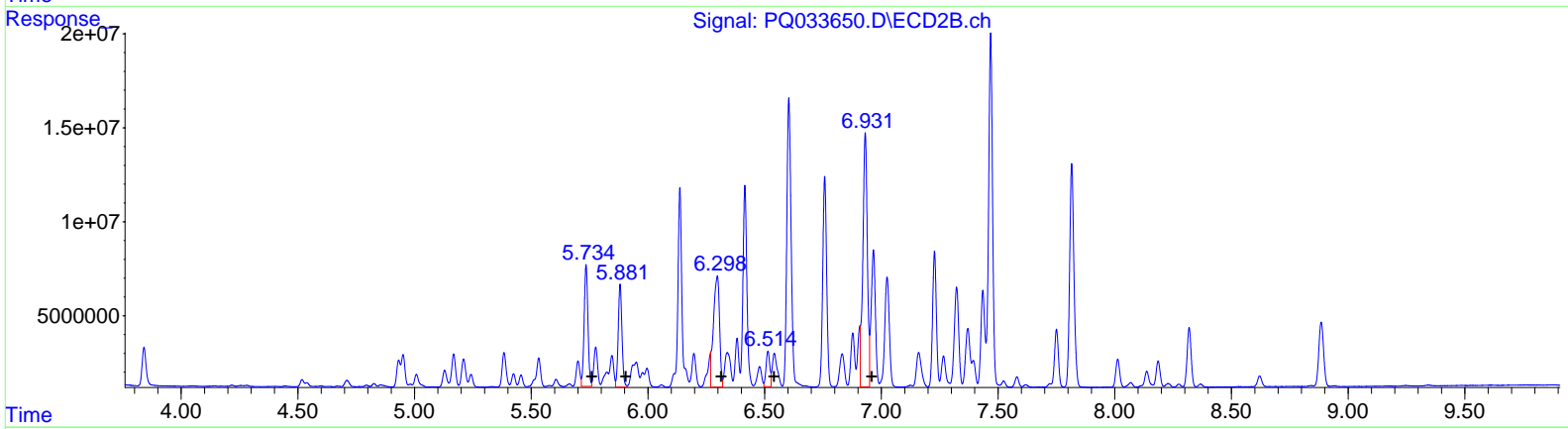
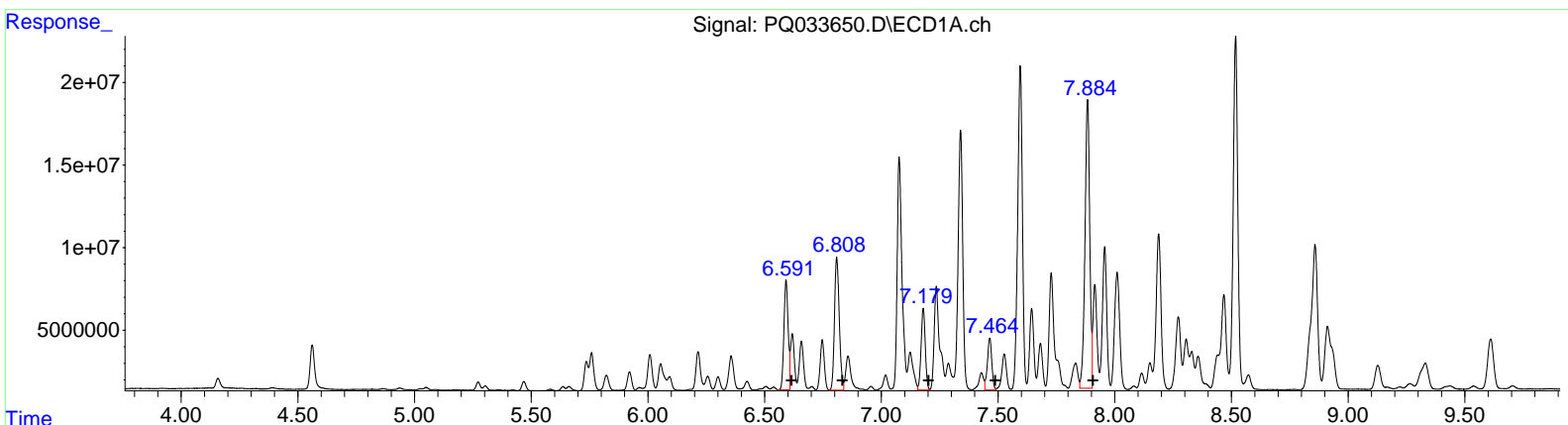
Data Path : Z:\pestpcbsrv\HPCHEM1\ECD_Q\Data\PQ102618\
 Data File : PQ033650.D
 Signal(s) : Signal #1: ECD1A.ch Signal #2: ECD2B.ch
 Acq On : 26 Oct 2018 04:39
 Operator : SM\SJ
 Sample : J5674-06
 Misc :
 ALS Vial : 39 Sample Multiplier: 1

Instrument :
 ECD_Q
Client Sampled :
 COBM9

Manual Integrations
APPROVED
 sohil
 10/30/2018 1:53:24 AM

Integration File signal 1: autoint1.e
 Integration File signal 2: autoint2.e
 Quant Time: Oct 26 13:13:03 2018
 Quant Method : Z:\pestpcbsrv\HPCHEM1\ECD_Q\Method\PQ100918CLP.M
 Quant Title : GC EXTRACTABLES
 QLast Update : Wed Oct 10 08:14:42 2018
 Response via : Initial Calibration
 Integrator: ChemStation

Volume Inj. : 1 µl
 Signal #1 Phase : ZB MR1 Signal #2 Phase: ZB MR2
 Signal #1 Info : 30Mx0.32mmx 0.5µm Signal #2 Info : 30M x 0.32mm x 0.25µm



QEdit

(26) AR-1254-1 (L6)			
R.T.	Response	Conc	
6.59	83349970	841.05	
6.81	114653538	733.65	
7.18	61779036	364.08	
7.46	41388527	335.20	
7.88	249525849	1884.94	
(26) AR-1254-1 #2 (L6)			
R.T.	Response	Conc	
5.73	72871327	646.82	
5.88	61033294	618.09	
6.30	107029913	644.02	
6.51	21224249	199.48	
6.93	181977722	1238.91	

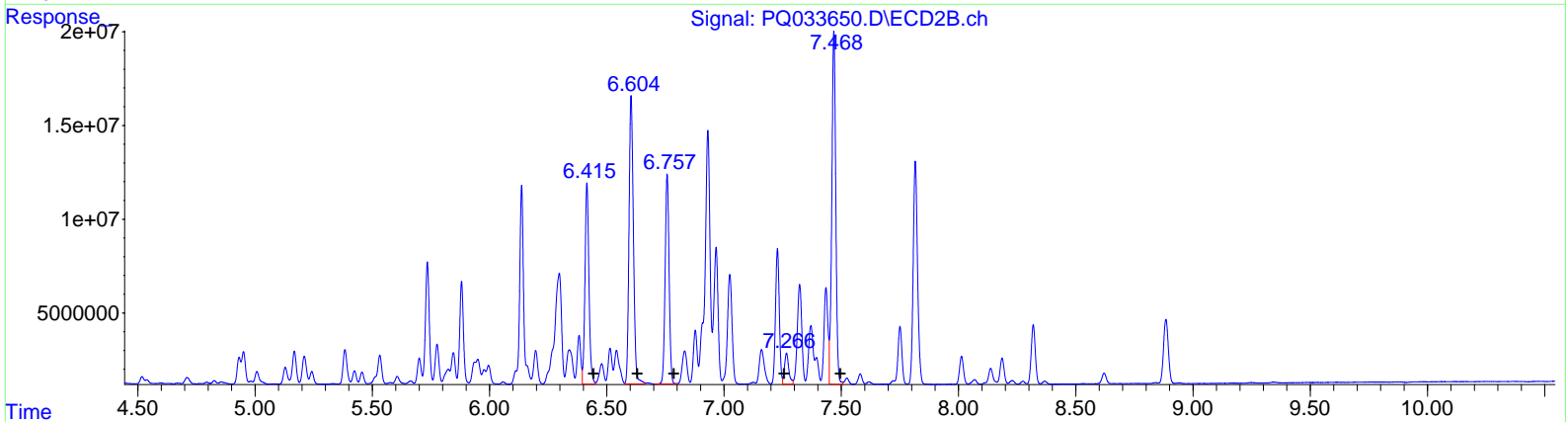
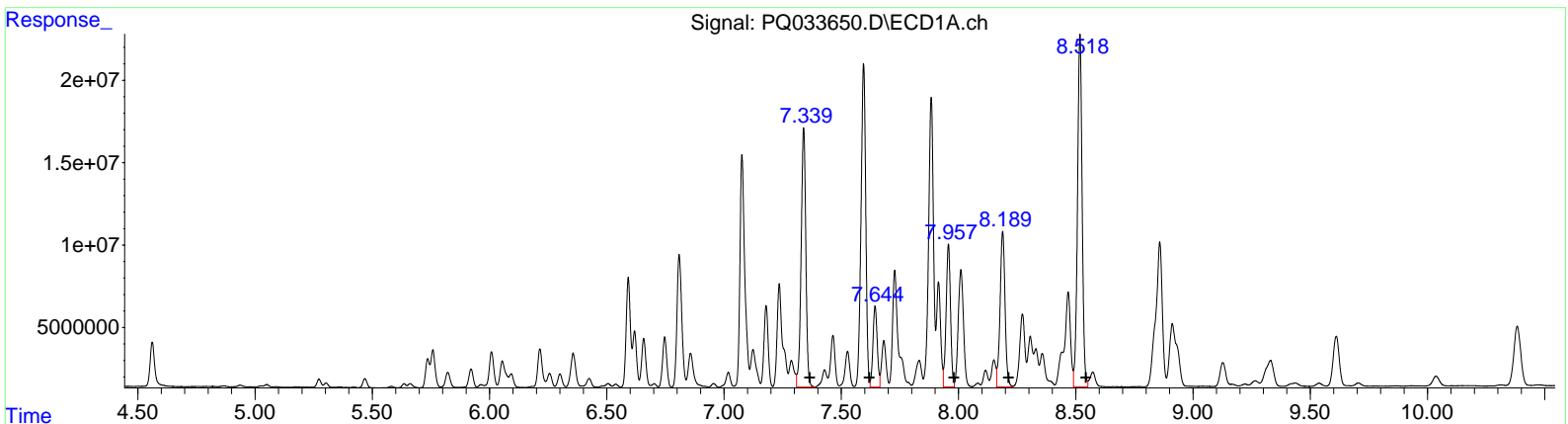
Data Path : Z:\pestpcbsrv\HPCHEM1\ECD_Q\Data\PQ102618\
 Data File : PQ033650.D
 Signal(s) : Signal #1: ECD1A.ch Signal #2: ECD2B.ch
 Acq On : 26 Oct 2018 04:39
 Operator : SM\SJ
 Sample : J5674-06
 Misc :
 ALS Vial : 39 Sample Multiplier: 1

Instrument :
 ECD_Q
Client Sampled :
 COBM9

Manual Integrations
APPROVED
 sohil
 10/30/2018 1:53:24 AM

Integration File signal 1: autoint1.e
 Integration File signal 2: autoint2.e
 Quant Time: Oct 26 06:57:26 2018
 Quant Method : Z:\pestpcbsrv\HPCHEM1\ECD_Q\Method\PQ100918CLP.M
 Quant Title : GC EXTRACTABLES
 QLast Update : Wed Oct 10 08:14:42 2018
 Response via : Initial Calibration
 Integrator: ChemStation

Volume Inj. : 1 µl
 Signal #1 Phase : ZB MR1 Signal #2 Phase: ZB MR2
 Signal #1 Info : 30Mx0.32mmx 0.5µm Signal #2 Info : 30M x 0.32mm x 0.25µm



QEdit

(31) AR-1260-1 (L7)

R.T.	Response	Conc
7.34	219550067	2052.70
7.64	62498061	494.93
7.96	112523739	1444.62
8.19	139402418	1377.12
8.52	293474732	1554.19

(31) AR-1260-1 #2 (L7)

R.T.	Response	Conc
6.42	125588486	1337.13
6.60	198095324	1700.24
6.76	131242523	1216.98
7.27	21498095	279.67
7.47	221624580	1153.59

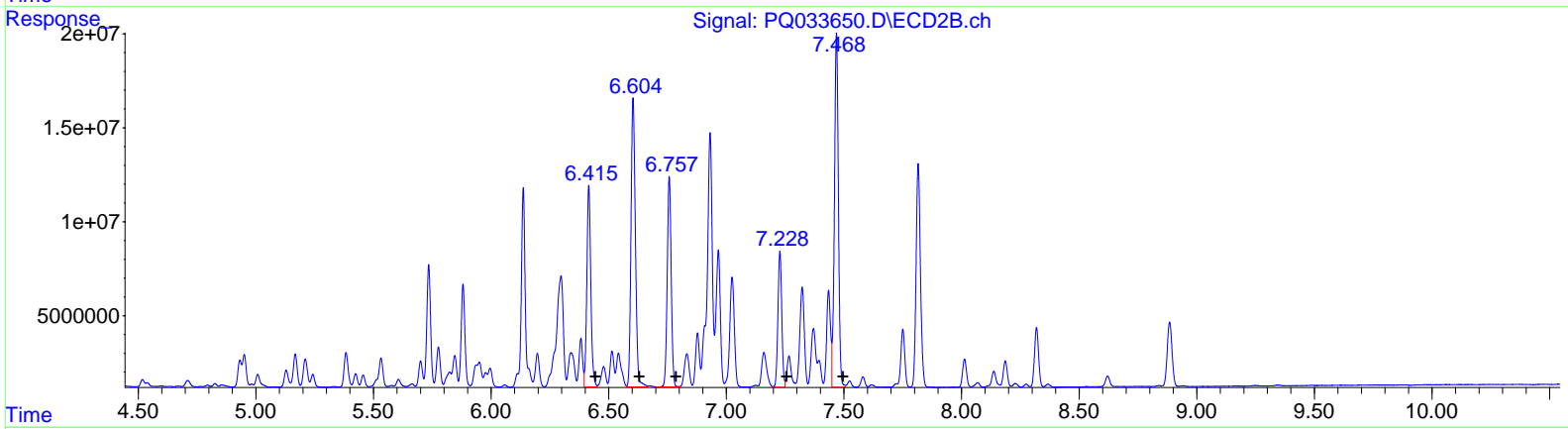
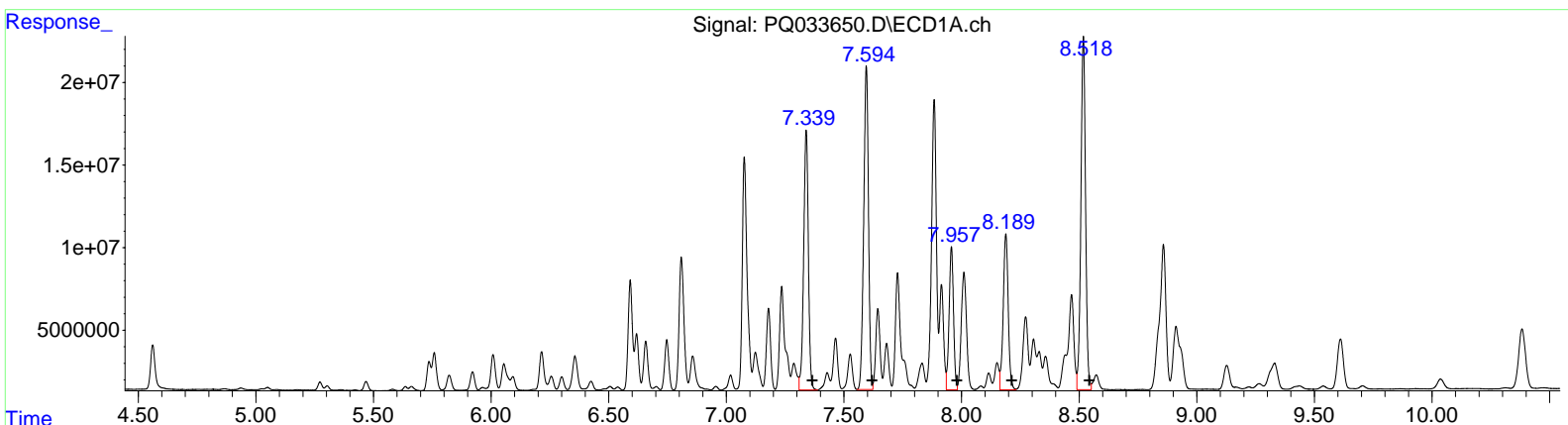
Data Path : Z:\pestpcbsrv\HPCHEM1\ECD_Q\Data\PQ102618\
 Data File : PQ033650.D
 Signal(s) : Signal #1: ECD1A.ch Signal #2: ECD2B.ch
 Acq On : 26 Oct 2018 04:39
 Operator : SM\SJ
 Sample : J5674-06
 Misc :
 ALS Vial : 39 Sample Multiplier: 1

Instrument :
 ECD_Q
Client Sampled :
 COBM9

Manual Integrations
APPROVED
 sohil
 10/30/2018 1:53:24 AM

Integration File signal 1: autoint1.e
 Integration File signal 2: autoint2.e
 Quant Time: Oct 26 13:13:03 2018
 Quant Method : Z:\pestpcbsrv\HPCHEM1\ECD_Q\Method\PQ100918CLP.M
 Quant Title : GC EXTRACTABLES
 QLast Update : Wed Oct 10 08:14:42 2018
 Response via : Initial Calibration
 Integrator: ChemStation

Volume Inj. : 1 µl
 Signal #1 Phase : ZB MR1 Signal #2 Phase: ZB MR2
 Signal #1 Info : 30Mx0.32mmx 0.5µm Signal #2 Info : 30M x 0.32mm x 0.25µm



QEdit

(31) AR-1260-1 (L7)		
R.T.	Response	Conc
7.34	219535276	2052.56
7.59	275970810	2185.47
7.96	112482675	1444.09
8.19	139350533	1376.61
8.52	293446141	1554.04

(31) AR-1260-1 #2 (L7)		
R.T.	Response	Conc
6.42	125588486	1337.13
6.60	198095324	1700.24
6.76	131242523	1216.98
7.23	82085863	1067.86
7.47	221624580	1153.59

Quantitation Report (QT Reviewed)

Data Path : Z:\pestpcbsrv\HPCHEM1\ECD_Q\Data\PQ102618\
 Data File : PQ033650.D
 Signal(s) : Signal #1: ECD1A.ch Signal #2: ECD2B.ch
 Acq On : 26 Oct 2018 04:39
 Operator : SM\SJ
 Sample : J5674-06
 Misc :
 ALS Vial : 39 Sample Multiplier: 1

Instrument :
 ECD_Q
 Client Sampled :
 COBM9

Manual Integrations
 APPROVED

sohil
 10/30/2018 1:53:24 AM

Integration File signal 1: autoint1.e
 Integration File signal 2: autoint2.e
 Quant Time: Oct 26 13:13:03 2018
 Quant Method : Z:\pestpcbsrv\HPCHEM1\ECD_Q\Method\PQ100918CLP.M
 Quant Title : GC EXTRACTABLES
 QLast Update : Wed Oct 10 08:14:42 2018
 Response via : Initial Calibration
 Integrator: ChemStation

Volume Inj. : 1 µl
 Signal #1 Phase : ZB MR1 Signal #2 Phase: ZB MR2
 Signal #1 Info : 30Mx0.32mmx 0.5µm Signal #2 Info : 30M x 0.32mm x 0.25µm

Compound	RT#1	RT#2	Resp#1	Resp#2	ng/ml	ng/ml

System Monitoring Compounds						
1) SA Tetrachlo...	4.561	3.841	36854605	23743234	17.965m	15.266
2) SA Decachlor...	10.382	8.885	73581737	48177273	38.926m	29.969
Target Compounds						
3) L1 AR-1016-1	5.736	4.932	20071849	14454258	288.265m	252.486m
4) L1 AR-1016-2	5.759	4.950	28628666	18103068	277.926m	227.186m
5) L1 AR-1016-3	5.822	5.128	13073116	10498458	208.778m	253.095m
6) L1 AR-1016-4	5.921	5.167	14221862	20729967	281.389m	605.010m#
7) L1 AR-1016-5	6.215	5.383	30199766	21923734	586.051m	479.826m
26) L6 AR-1254-1	6.591	5.734	83349970	72871327	841.053m	646.819m
27) L6 AR-1254-2	6.809	5.881	114.7E6	61033294	733.648	618.089
28) L6 AR-1254-3	7.180	6.298	61779036	107.0E6	364.082	644.019m#
29) L6 AR-1254-4	7.465	6.514	41388527	21224249	335.199	199.483m#
30) L6 AR-1254-5	7.884	6.931	249.5E6	182.0E6	1884.939m	1238.910m#
31) L7 AR-1260-1	7.340	6.415	219.5E6	125.6E6	2052.559	1337.126 #
32) L7 AR-1260-2	7.594	6.604	276.0E6	198.1E6	2185.468m	1700.236
33) L7 AR-1260-3	7.957	6.758	112.5E6	131.2E6	1444.092	1216.981
34) L7 AR-1260-4	8.188	7.228	139.4E6	82085863	1376.611	1067.862m
35) L7 AR-1260-5	8.518	7.468	293.4E6	221.6E6	1554.043	1153.587 #

}
 9510/30/19

(f)=RT Delta > 1/2 Window (#)=Amounts differ by > 25% (m)=manual int.