

Data Path : Z:\pestpcbsrv\HPCHEM1\ECD\_Q\Data\PQ102918\  
 Data File : PQ033812.D  
 Signal(s) : Signal #1: ECD1A.ch Signal #2: ECD2B.ch  
 Acq On : 29 Oct 2018 07:37  
 Operator : SM\SJ  
 Sample : HEXANE  
 Misc :  
 ALS Vial : 1 Sample Multiplier: 1

Instrument :  
 ECD\_Q  
 ClientSampled :

Integration File signal 1: autoint1.e  
 Integration File signal 2: autoint2.e  
 Quant Time: Oct 30 01:48:47 2018  
 Quant Method : Z:\pestpcbsrv\HPCHEM1\ECD\_Q\Method\PQ100918CLP.M  
 Quant Title : GC EXTRACTABLES  
 QLast Update : Wed Oct 10 08:14:42 2018  
 Response via : Initial Calibration  
 Integrator: ChemStation

Volume Inj. : 1 µl  
 Signal #1 Phase : ZB MR1 Signal #2 Phase: ZB MR2  
 Signal #1 Info : 30Mx0.32mmx 0.5µm Signal #2 Info : 30M x 0.32mm x 0.25µm

Compound	RT#1	RT#2	Resp#1	Resp#2	ng/ml	ng/ml
System Monitoring Compounds						
1) SA Tetrachlo...	4.603	3.865	73582	90389	0.036	0.058 #
2) SA Decachlor...	10.409	8.918	122835	132547	0.065	0.082 #
Target Compounds						
3) L1 AR-1016-1	5.801	4.945	152568	380601	2.191	6.648 #
4) L1 AR-1016-2	5.801	4.981	152568	609951	1.481	7.655 #
5) L1 AR-1016-3	5.847	5.160	239130	210099	3.819	5.065 #
6) L1 AR-1016-4	5.941	5.201	152588	70043	3.019	2.044 #
7) L1 AR-1016-5	6.234	5.425	1471471	256399	28.555	5.612 #
8) L2 AR-1221-1	0.000	4.068	0	42862	N.D.	2.319 #
9) L2 AR-1221-2	0.000	4.167	0	32165	N.D.	2.432 #
10) L2 AR-1221-3	4.963	4.240	322086	30202	5.614	0.660 #
11) L3 AR-1232-1	4.963	4.240	322086	30202	7.255	0.873 #
12) L3 AR-1232-2	5.550	4.981	126078	609951	5.338	16.221 #
13) L3 AR-1232-3	5.801	5.160	152568	210099	3.191	10.727 #
14) L3 AR-1232-4	5.941	5.236	152588	91040	6.406	5.304
15) L3 AR-1232-5	6.026	5.393	146937	317265	8.239	16.270 #
16) L4 AR-1242-1	5.801	4.953	152568	224143	2.557	4.606 #
17) L4 AR-1242-2	5.801	4.981	152568	609951	1.757	9.036 #
18) L4 AR-1242-3	5.847	5.149	239130	43410	4.573	1.185 #
19) L4 AR-1242-4	5.941	5.236	152588	91040	3.538	2.472 #
20) L4 AR-1242-5	6.688	5.765	2070239	4987968	41.995	103.830 #
21) L5 AR-1248-1	5.801	4.953	152568	224143	3.076	5.470 #
22) L5 AR-1248-2	6.026	5.201	146937	70043	1.998	1.275 #
23) L5 AR-1248-3	6.234	5.236	1471471	91040	18.005	1.626 #
24) L5 AR-1248-4	6.642	5.393	931795	317265	9.947	4.600 #
25) L5 AR-1248-5	6.688	5.802	2070239	1171278	23.311	16.944 #
26) L6 AR-1254-1	6.619	5.765	4690892	4987968	47.334	44.274
27) L6 AR-1254-2	6.834	5.908	2272414	4283576	14.541	43.380 #
28) L6 AR-1254-3	7.223	6.309	7474044	815491	44.047	4.907 #
29) L6 AR-1254-4	7.481	6.536	1614315	646173	13.074	6.073 #
30) L6 AR-1254-5	7.904	6.951	1276608	870012	9.644	5.923 #
31) L7 AR-1260-1	7.344	6.440	1279129	1039820	11.959	11.071
32) L7 AR-1260-2	7.612	6.642	1228494	270412	9.729	2.321 #
33) L7 AR-1260-3	7.929	6.777	922769	352755	11.847	3.271 #
34) L7 AR-1260-4	8.208	7.287	671598	1441029	6.635	18.746 #
35) L7 AR-1260-5	8.496	7.508	140325	357848	0.743	1.863 #
36) L8 AR-1262-1	7.929	6.997	922769	827676	6.846	6.440
37) L8 AR-1262-2	8.496	7.508	140325	357848	0.567	1.494 #
38) L8 AR-1262-3	0.000	7.778	0	705293	N.D.	7.572 #
39) L8 AR-1262-4	8.963	7.842	125936	1004900	1.848	5.772 #
40) L8 AR-1262-5	9.633	8.351	3083296	262013	35.242	3.247 #
41) L9 AR-1268-1	0.000	7.778	0	705293	N.D.	2.063 #

Data Path : Z:\pestpcbsrv\HPCHEM1\ECD\_Q\Data\PQ102918\  
 Data File : PQ033812.D  
 Signal(s) : Signal #1: ECD1A.ch Signal #2: ECD2B.ch  
 Acq On : 29 Oct 2018 07:37  
 Operator : SM\SJ  
 Sample : HEXANE  
 Misc :  
 ALS Vial : 1 Sample Multiplier: 1

Instrument :  
 ECD\_Q  
 ClientSampleId :

Integration File signal 1: autoint1.e  
 Integration File signal 2: autoint2.e  
 Quant Time: Oct 30 01:48:47 2018  
 Quant Method : Z:\pestpcbsrv\HPCHEM1\ECD\_Q\Method\PQ100918CLP.M  
 Quant Title : GC EXTRACTABLES  
 QLast Update : Wed Oct 10 08:14:42 2018  
 Response via : Initial Calibration  
 Integrator: ChemStation

Volume Inj. : 1 µl  
 Signal #1 Phase : ZB MR1 Signal #2 Phase: ZB MR2  
 Signal #1 Info : 30Mx0.32mmx 0.5µm Signal #2 Info : 30M x 0.32mm x 0.25µm

	Compound	RT#1	RT#2	Resp#1	Resp#2	ng/ml	ng/ml
42)	L9 AR-1268-2	8.963	7.842	125936	1004900	0.378	3.252 #
43)	L9 AR-1268-3	9.189	8.050	952990	220489	3.382	0.862 #
44)	L9 AR-1268-4	9.633	8.351	3083296	262013	25.520	2.375 #
45)	L9 AR-1268-5	10.130	8.650	80286	184938	0.087	0.221 #

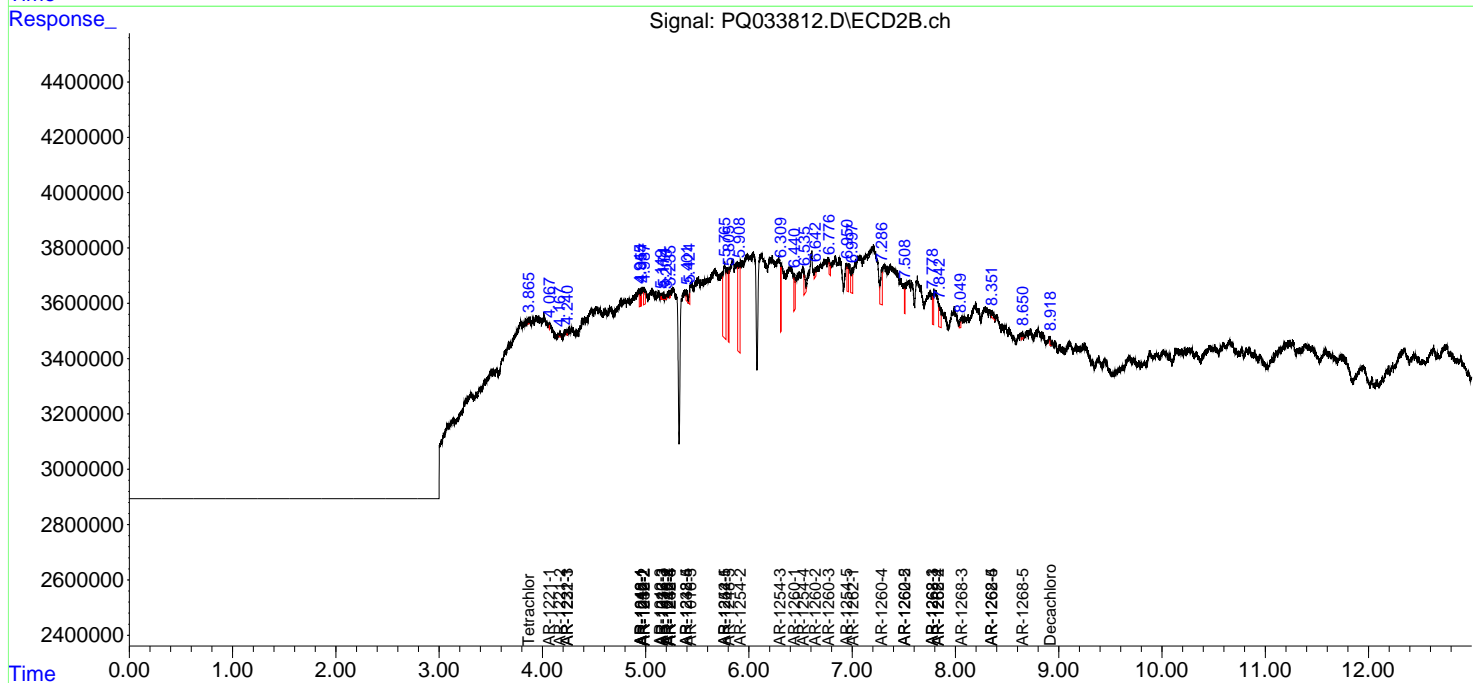
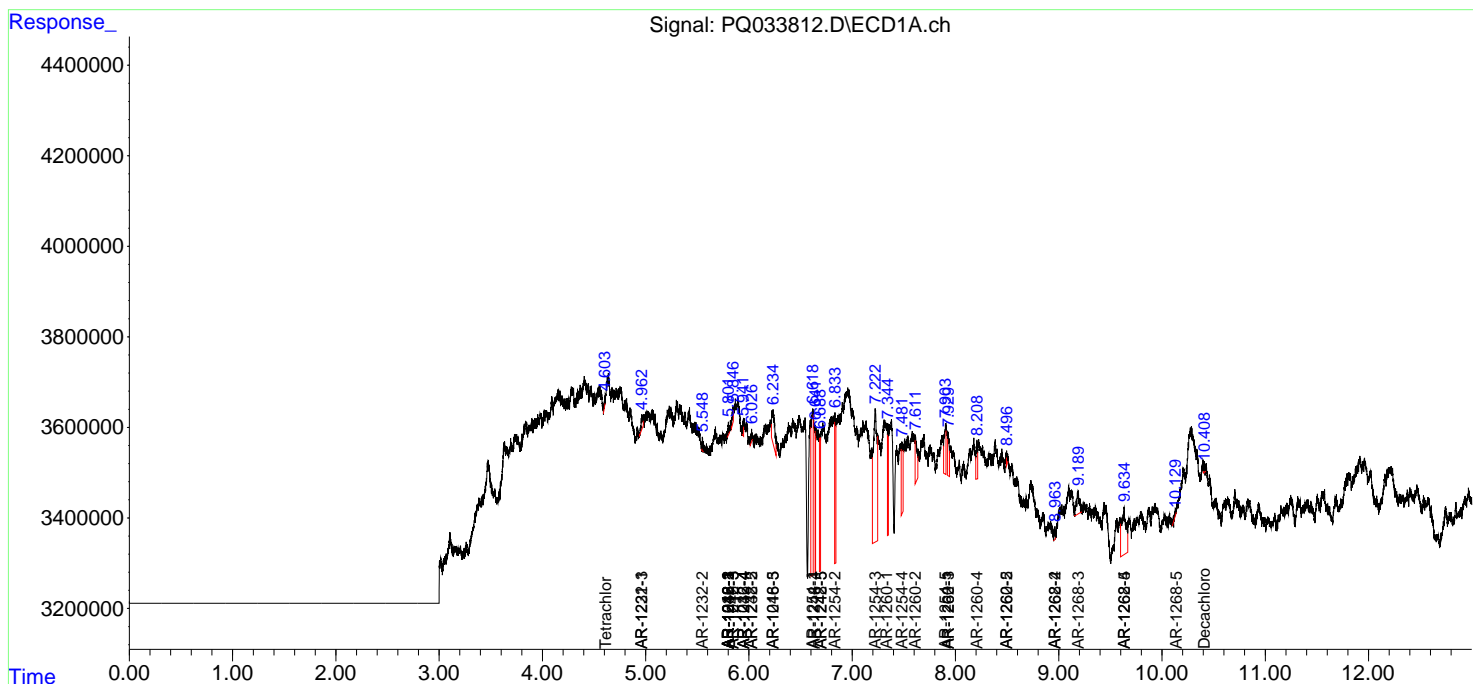
(f)=RT Delta > 1/2 Window (#)=Amounts differ by > 25% (m)=manual int.

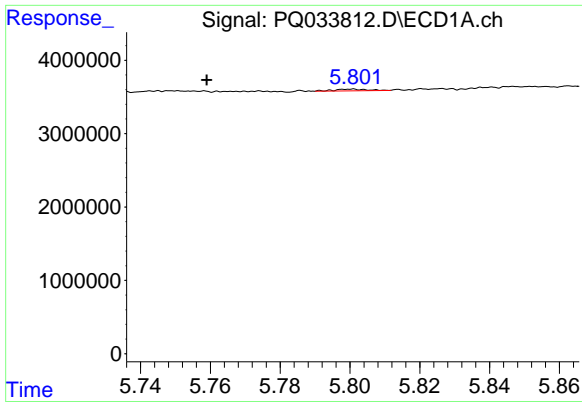
Data Path : Z:\pestpcbsrv\HPCHEM1\ECD\_Q\Data\PQ102918\  
 Data File : PQ033812.D  
 Signal(s) : Signal #1: ECD1A.ch Signal #2: ECD2B.ch  
 Acq On : 29 Oct 2018 07:37  
 Operator : SM\SJ  
 Sample : HEXANE  
 Misc :  
 ALS Vial : 1 Sample Multiplier: 1

Instrument :  
 ECD\_Q  
 ClientSampled :

Integration File signal 1: autoint1.e  
 Integration File signal 2: autoint2.e  
 Quant Time: Oct 30 01:48:47 2018  
 Quant Method : Z:\pestpcbsrv\HPCHEM1\ECD\_Q\Method\PQ100918CLP.M  
 Quant Title : GC EXTRACTABLES  
 QLast Update : Wed Oct 10 08:14:42 2018  
 Response via : Initial Calibration  
 Integrator: ChemStation

Volume Inj. : 1 µl  
 Signal #1 Phase : ZB MR1 Signal #2 Phase: ZB MR2  
 Signal #1 Info : 30Mx0.32mmx 0.5µm Signal #2 Info : 30M x 0.32mm x 0.25µm

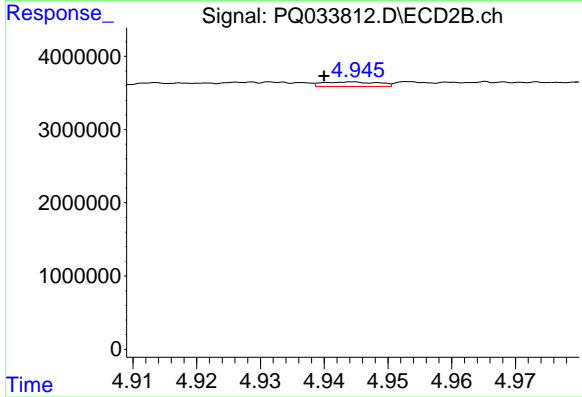




#3 AR-1016-1

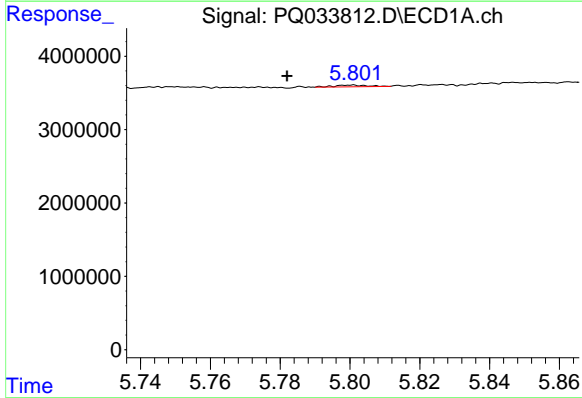
R.T.: 5.801 min  
 Delta R.T.: 0.042 min  
 Response: 152568  
 Conc: 2.19 ng/ml

Instrument :  
 ECD\_Q  
 ClientSampled :



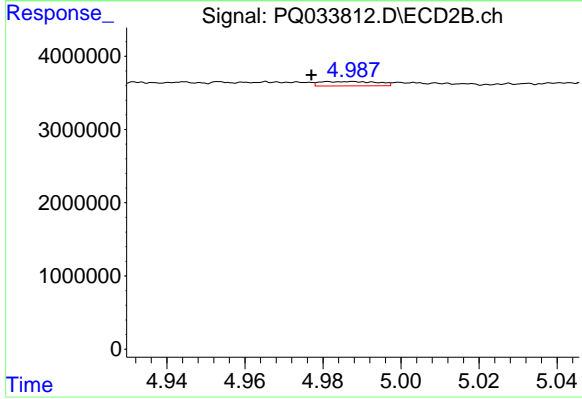
#3 AR-1016-1

R.T.: 4.945 min  
 Delta R.T.: 0.005 min  
 Response: 380601  
 Conc: 6.65 ng/ml



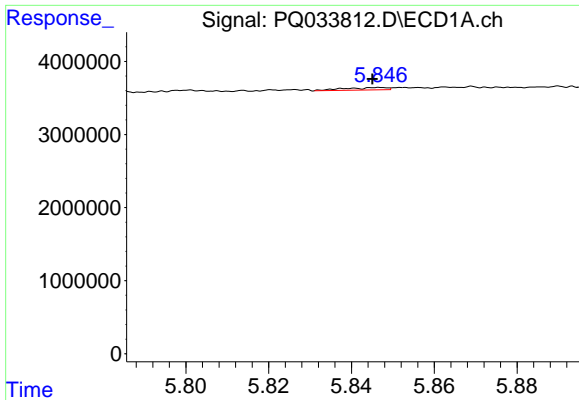
#4 AR-1016-2

R.T.: 5.801 min  
 Delta R.T.: 0.019 min  
 Response: 152568  
 Conc: 1.48 ng/ml



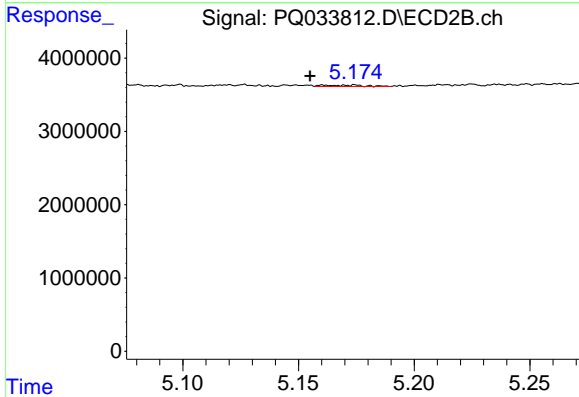
#4 AR-1016-2

R.T.: 4.981 min  
 Delta R.T.: 0.004 min  
 Response: 609951  
 Conc: 7.65 ng/ml

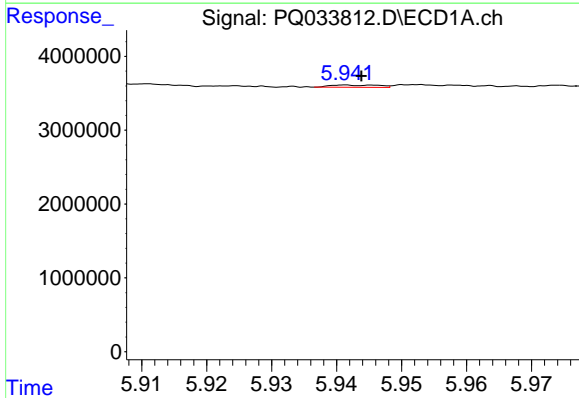


#5 AR-1016-3  
 R.T.: 5.847 min  
 Delta R.T.: 0.002 min  
 Response: 239130  
 Conc: 3.82 ng/ml

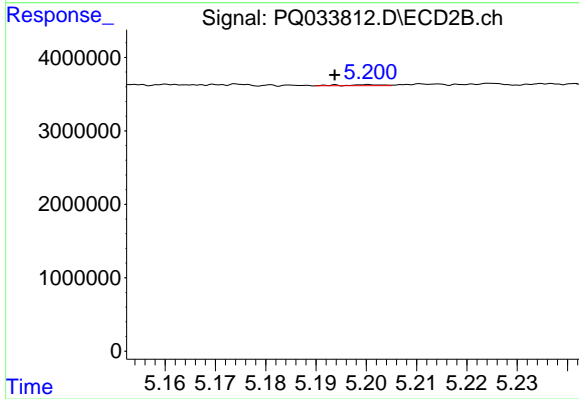
Instrument :  
 ECD\_Q  
 ClientSampleId :



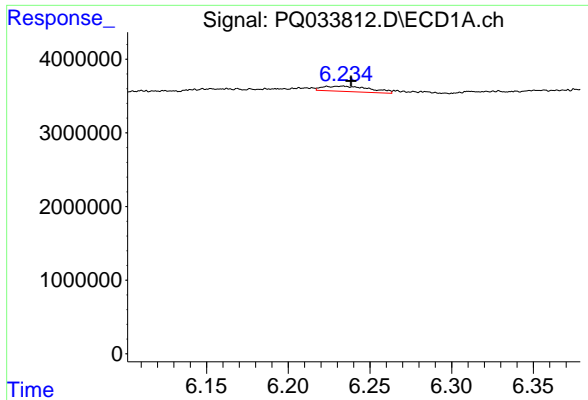
#5 AR-1016-3  
 R.T.: 5.160 min  
 Delta R.T.: 0.005 min  
 Response: 210099  
 Conc: 5.07 ng/ml



#6 AR-1016-4  
 R.T.: 5.941 min  
 Delta R.T.: -0.002 min  
 Response: 152588  
 Conc: 3.02 ng/ml

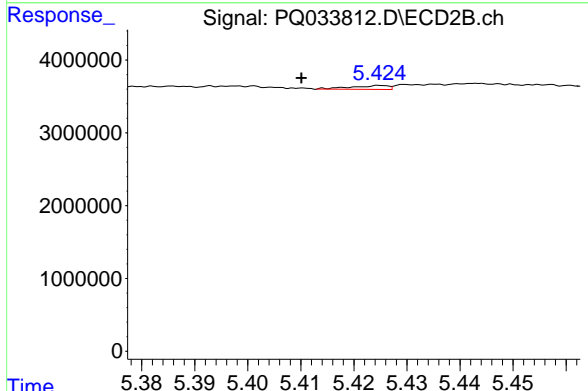


#6 AR-1016-4  
 R.T.: 5.201 min  
 Delta R.T.: 0.007 min  
 Response: 70043  
 Conc: 2.04 ng/ml

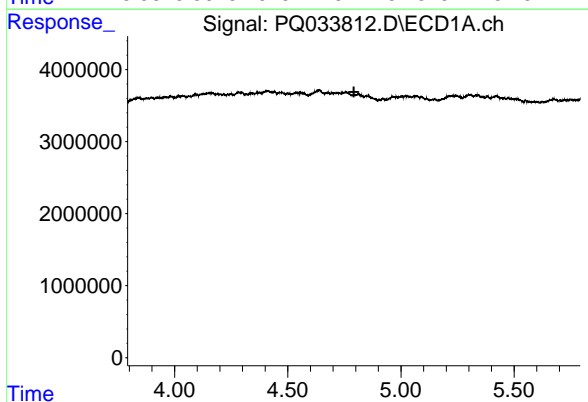


#7 AR-1016-5  
 R.T.: 6.234 min  
 Delta R.T.: -0.005 min  
 Response: 1471471  
 Conc: 28.56 ng/ml

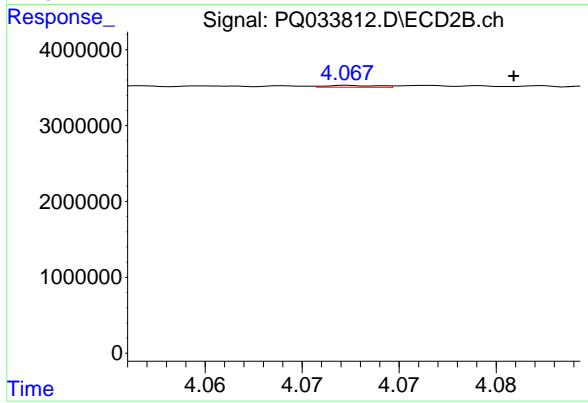
Instrument :  
 ECD\_Q  
 ClientSampleId :



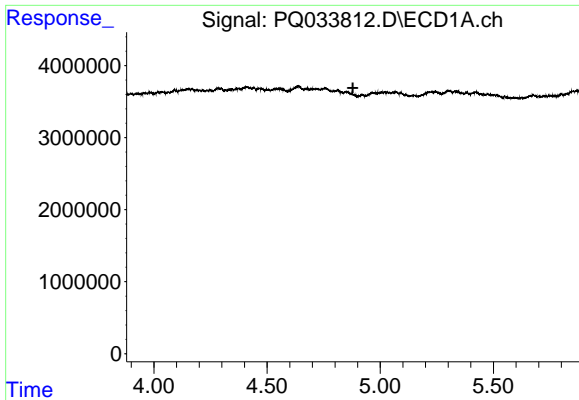
#7 AR-1016-5  
 R.T.: 5.425 min  
 Delta R.T.: 0.015 min  
 Response: 256399  
 Conc: 5.61 ng/ml



#8 AR-1221-1  
 R.T.: 0.000 min  
 Exp R.T. : 4.792 min  
 Response: 0  
 Conc: N.D.



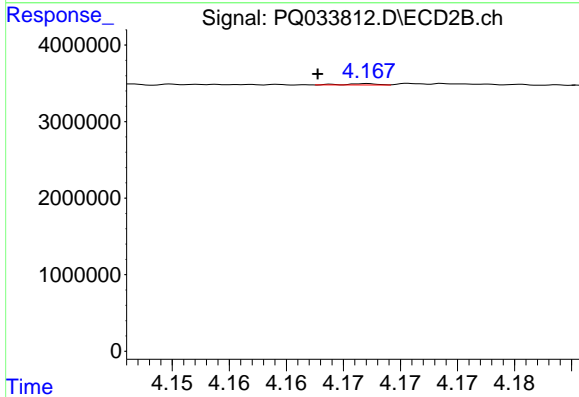
#8 AR-1221-1  
 R.T.: 4.068 min  
 Delta R.T.: -0.008 min  
 Response: 42862  
 Conc: 2.32 ng/ml



#9 AR-1221-2

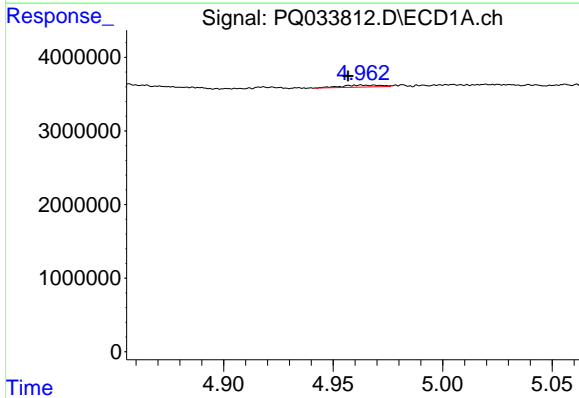
R.T.: 0.000 min  
 Exp R.T.: 4.879 min  
 Response: 0  
 Conc: N.D.

Instrument :  
 ECD\_Q  
 ClientSampled :



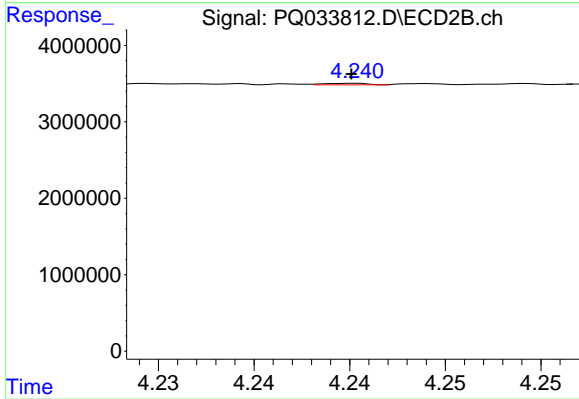
#9 AR-1221-2

R.T.: 4.167 min  
 Delta R.T.: 0.005 min  
 Response: 32165  
 Conc: 2.43 ng/ml



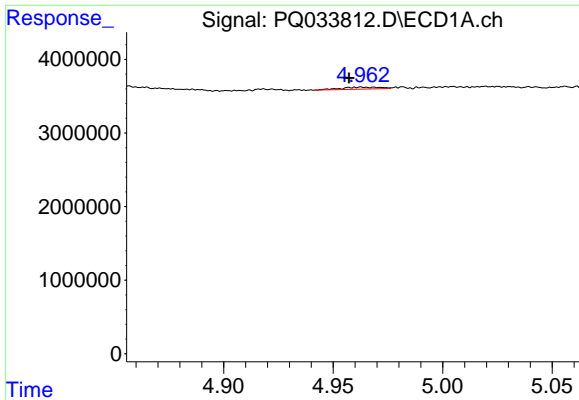
#10 AR-1221-3

R.T.: 4.963 min  
 Delta R.T.: 0.006 min  
 Response: 322086  
 Conc: 5.61 ng/ml



#10 AR-1221-3

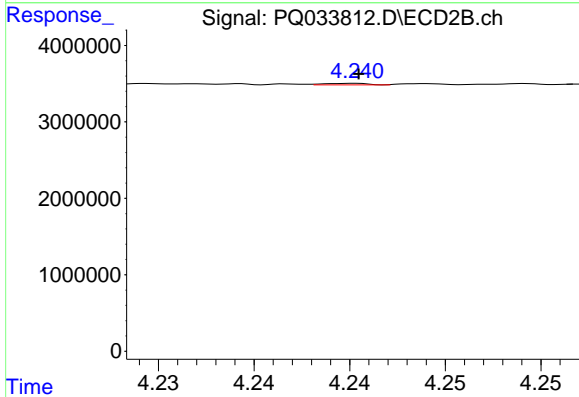
R.T.: 4.240 min  
 Delta R.T.: 0.000 min  
 Response: 30202  
 Conc: 0.66 ng/ml



#11 AR-1232-1

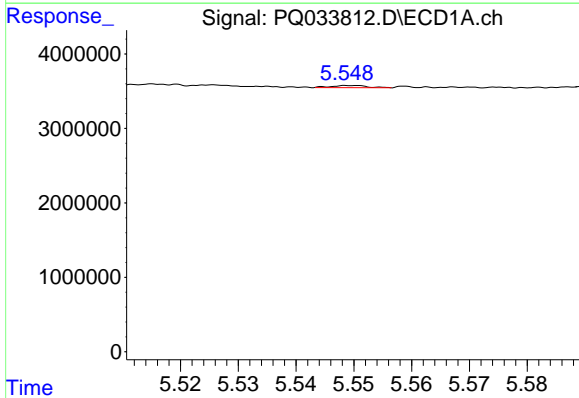
R.T.: 4.963 min  
 Delta R.T.: 0.005 min  
 Response: 322086  
 Conc: 7.26 ng/ml

Instrument :  
 ECD\_Q  
 ClientSampleId :



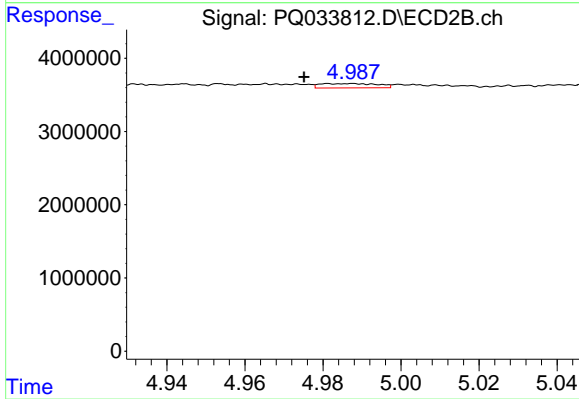
#11 AR-1232-1

R.T.: 4.240 min  
 Delta R.T.: 0.000 min  
 Response: 30202  
 Conc: 0.87 ng/ml



#12 AR-1232-2

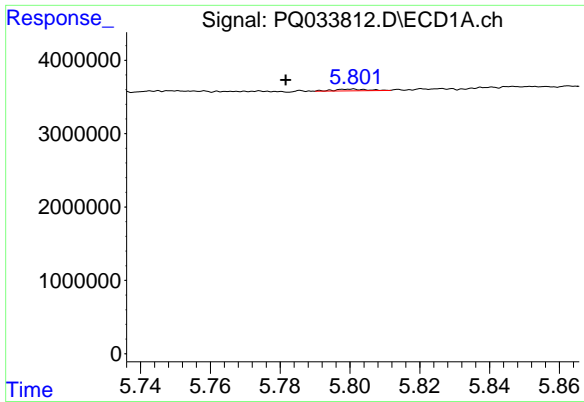
R.T.: 5.550 min  
 Delta R.T.: 0.058 min  
 Response: 126078  
 Conc: 5.34 ng/ml



#12 AR-1232-2

R.T.: 4.981 min  
 Delta R.T.: 0.006 min  
 Response: 609951  
 Conc: 16.22 ng/ml

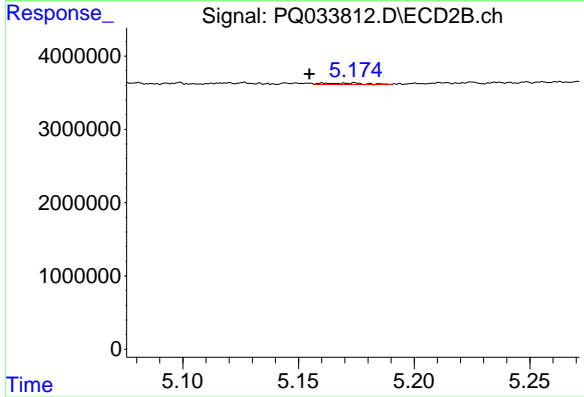




#13 AR-1232-3

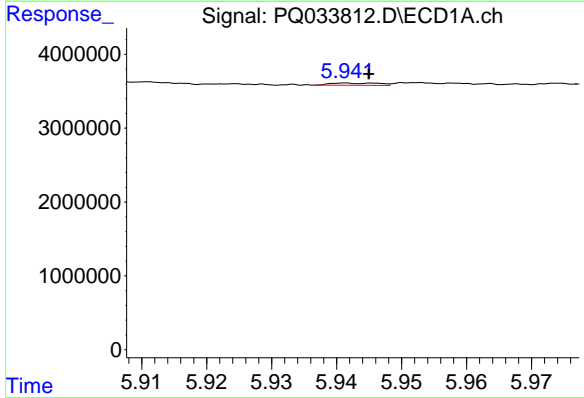
R.T.: 5.801 min  
 Delta R.T.: 0.019 min  
 Response: 152568  
 Conc: 3.19 ng/ml

Instrument :  
 ECD\_Q  
 ClientSampleId :



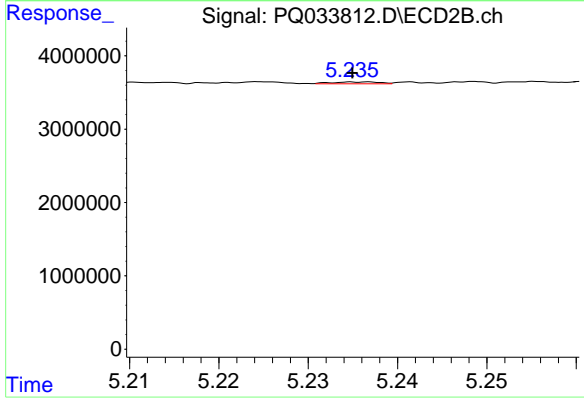
#13 AR-1232-3

R.T.: 5.160 min  
 Delta R.T.: 0.006 min  
 Response: 210099  
 Conc: 10.73 ng/ml



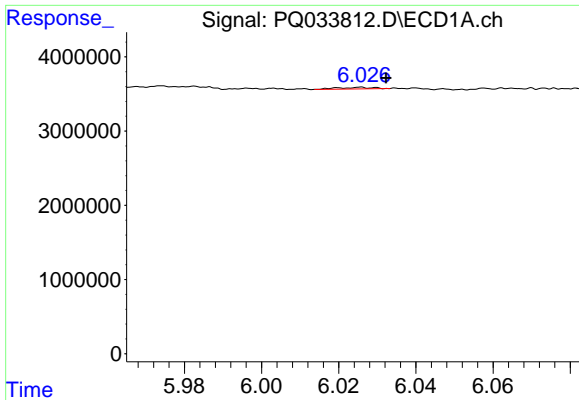
#14 AR-1232-4

R.T.: 5.941 min  
 Delta R.T.: -0.004 min  
 Response: 152588  
 Conc: 6.41 ng/ml



#14 AR-1232-4

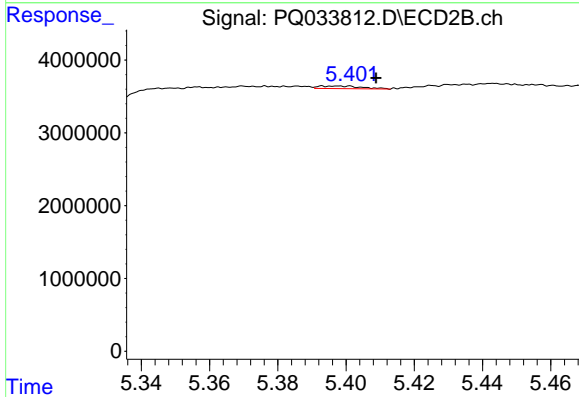
R.T.: 5.236 min  
 Delta R.T.: 0.001 min  
 Response: 91040  
 Conc: 5.30 ng/ml



#15 AR-1232-5

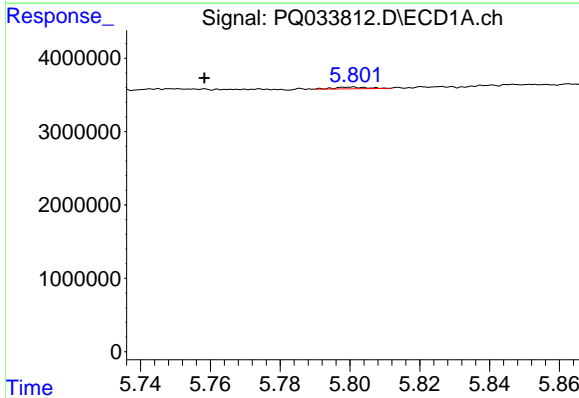
R.T.: 6.026 min  
 Delta R.T.: -0.006 min  
 Response: 146937  
 Conc: 8.24 ng/ml

Instrument :  
 ECD\_Q  
 ClientSampleId :



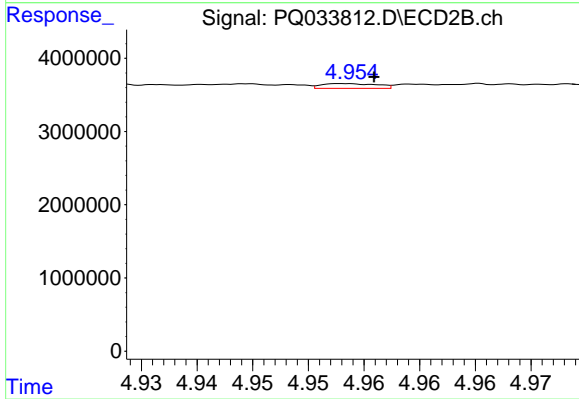
#15 AR-1232-5

R.T.: 5.393 min  
 Delta R.T.: -0.016 min  
 Response: 317265  
 Conc: 16.27 ng/ml



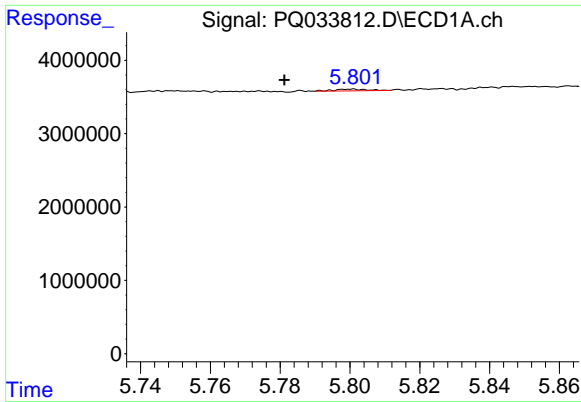
#16 AR-1242-1

R.T.: 5.801 min  
 Delta R.T.: 0.043 min  
 Response: 152568  
 Conc: 2.56 ng/ml



#16 AR-1242-1

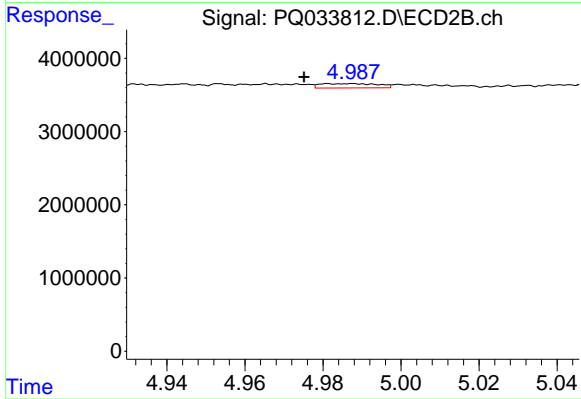
R.T.: 4.953 min  
 Delta R.T.: -0.002 min  
 Response: 224143  
 Conc: 4.61 ng/ml



#17 AR-1242-2

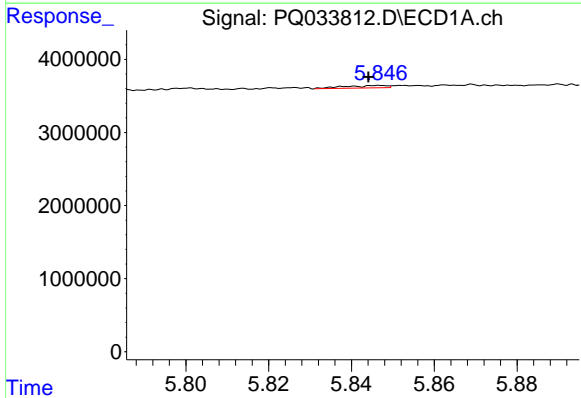
R.T.: 5.801 min  
 Delta R.T.: 0.020 min  
 Response: 152568  
 Conc: 1.76 ng/ml

Instrument :  
 ECD\_Q  
 ClientSampled :



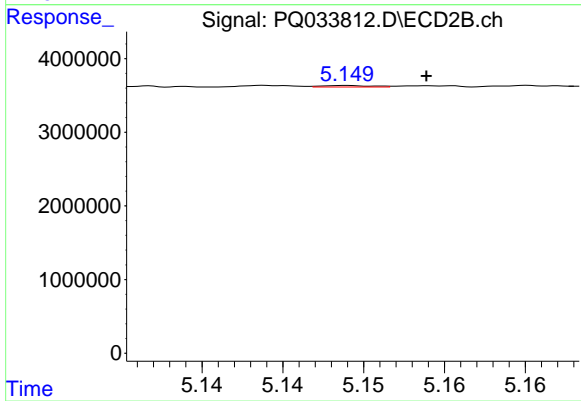
#17 AR-1242-2

R.T.: 4.981 min  
 Delta R.T.: 0.006 min  
 Response: 609951  
 Conc: 9.04 ng/ml



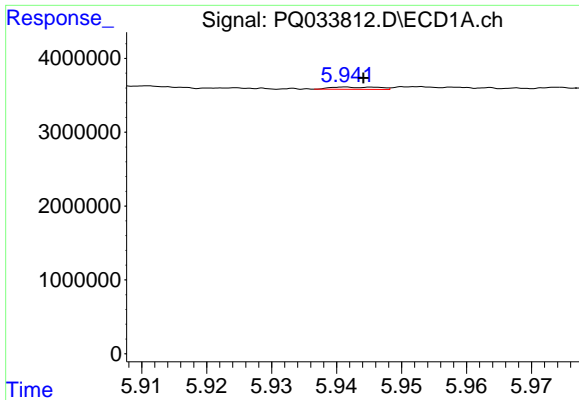
#18 AR-1242-3

R.T.: 5.847 min  
 Delta R.T.: 0.003 min  
 Response: 239130  
 Conc: 4.57 ng/ml



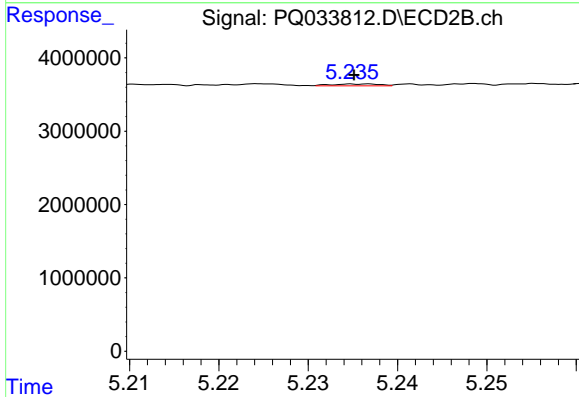
#18 AR-1242-3

R.T.: 5.149 min  
 Delta R.T.: -0.005 min  
 Response: 43410  
 Conc: 1.19 ng/ml

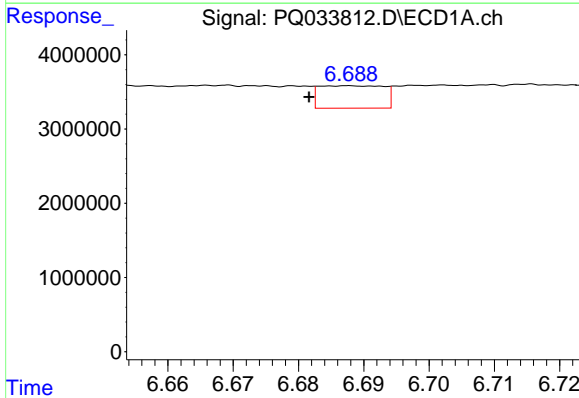


#19 AR-1242-4  
 R.T.: 5.941 min  
 Delta R.T.: -0.003 min  
 Response: 152588  
 Conc: 3.54 ng/ml

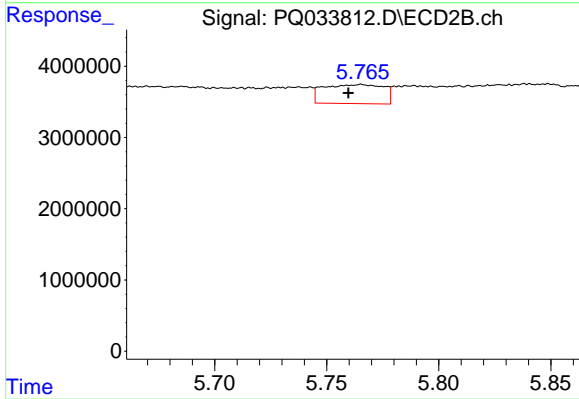
Instrument :  
 ECD\_Q  
 ClientSampleId :



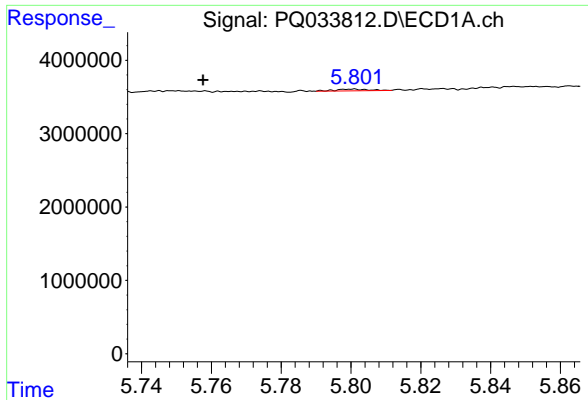
#19 AR-1242-4  
 R.T.: 5.236 min  
 Delta R.T.: 0.001 min  
 Response: 91040  
 Conc: 2.47 ng/ml



#20 AR-1242-5  
 R.T.: 6.688 min  
 Delta R.T.: 0.006 min  
 Response: 2070239  
 Conc: 41.99 ng/ml

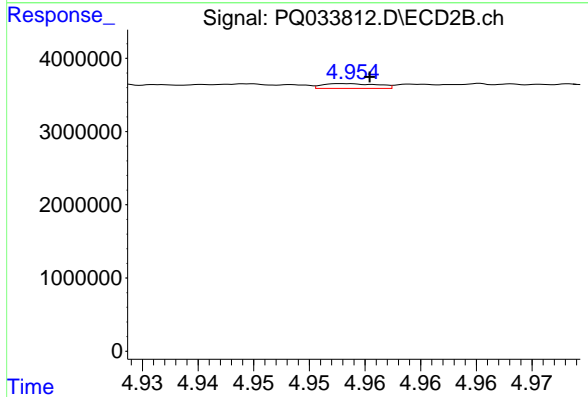


#20 AR-1242-5  
 R.T.: 5.765 min  
 Delta R.T.: 0.006 min  
 Response: 4987968  
 Conc: 103.83 ng/ml

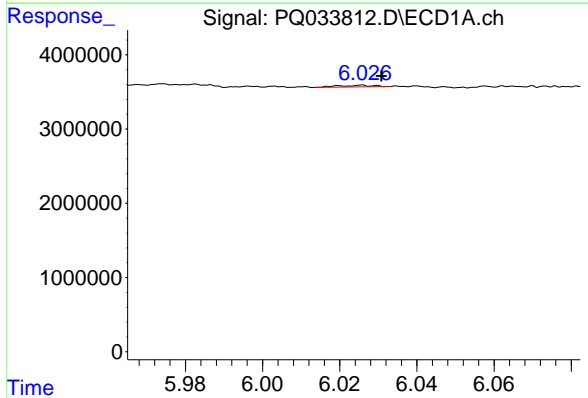


#21 AR-1248-1  
 R.T.: 5.801 min  
 Delta R.T.: 0.043 min  
 Response: 152568  
 Conc: 3.08 ng/ml

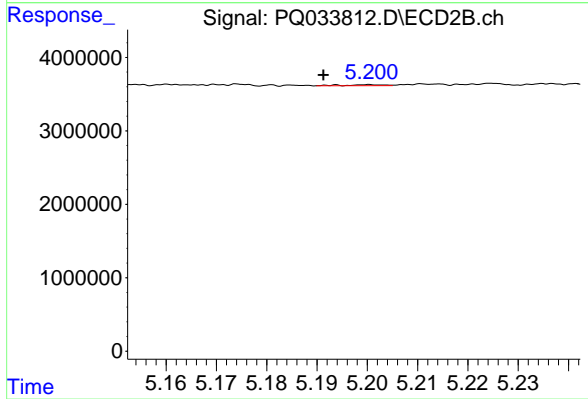
Instrument :  
 ECD\_Q  
 ClientSampleId :



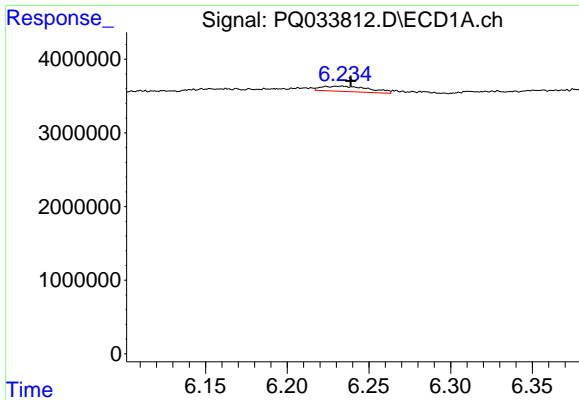
#21 AR-1248-1  
 R.T.: 4.953 min  
 Delta R.T.: -0.002 min  
 Response: 224143  
 Conc: 5.47 ng/ml



#22 AR-1248-2  
 R.T.: 6.026 min  
 Delta R.T.: -0.005 min  
 Response: 146937  
 Conc: 2.00 ng/ml

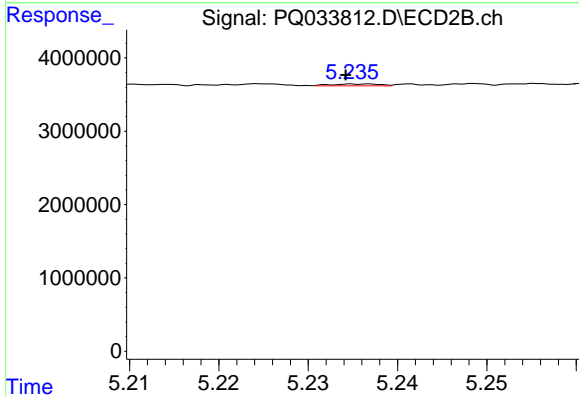


#22 AR-1248-2  
 R.T.: 5.201 min  
 Delta R.T.: 0.009 min  
 Response: 70043  
 Conc: 1.27 ng/ml

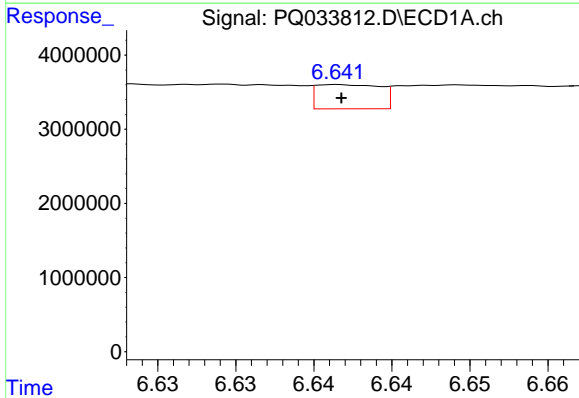


#23 AR-1248-3  
 R.T.: 6.234 min  
 Delta R.T.: -0.005 min  
 Response: 1471471  
 Conc: 18.01 ng/ml

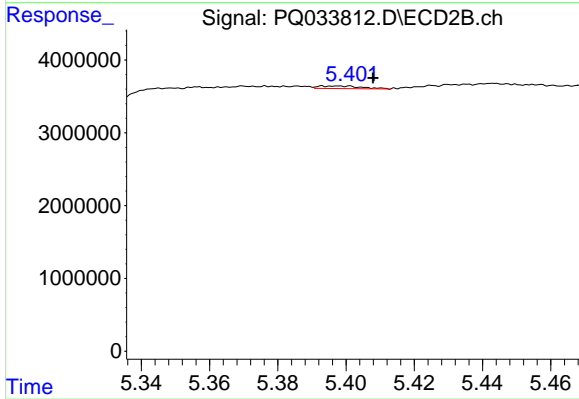
Instrument :  
 ECD\_Q  
 ClientSampleId :



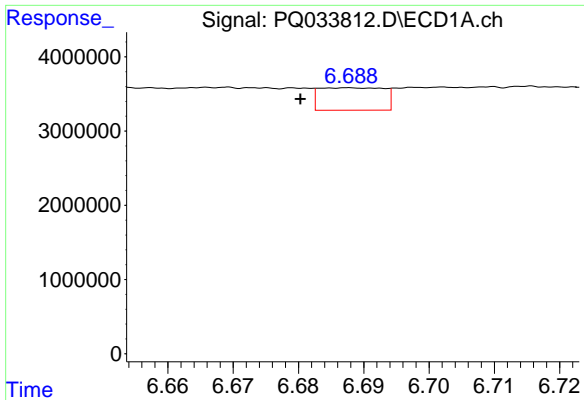
#23 AR-1248-3  
 R.T.: 5.236 min  
 Delta R.T.: 0.002 min  
 Response: 91040  
 Conc: 1.63 ng/ml



#24 AR-1248-4  
 R.T.: 6.642 min  
 Delta R.T.: 0.000 min  
 Response: 931795  
 Conc: 9.95 ng/ml



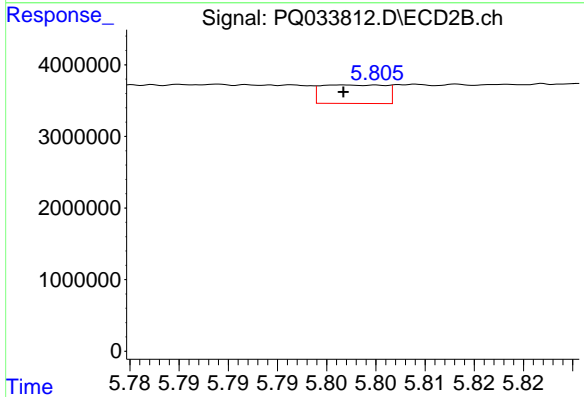
#24 AR-1248-4  
 R.T.: 5.393 min  
 Delta R.T.: -0.015 min  
 Response: 317265  
 Conc: 4.60 ng/ml



#25 AR-1248-5

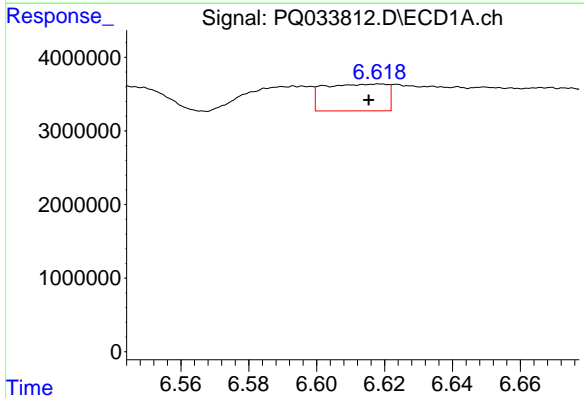
R.T.: 6.688 min  
 Delta R.T.: 0.008 min  
 Response: 2070239  
 Conc: 23.31 ng/ml

Instrument :  
 ECD\_Q  
 ClientSampled :



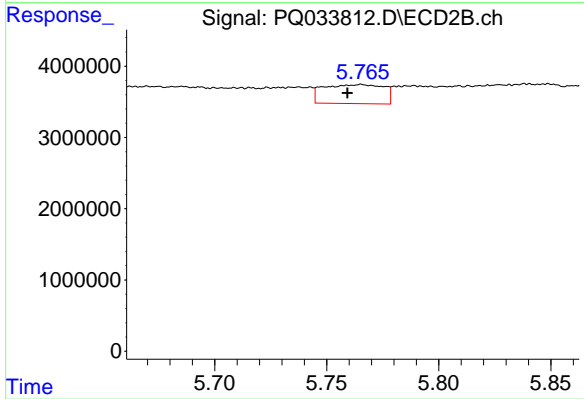
#25 AR-1248-5

R.T.: 5.802 min  
 Delta R.T.: 0.000 min  
 Response: 1171278  
 Conc: 16.94 ng/ml



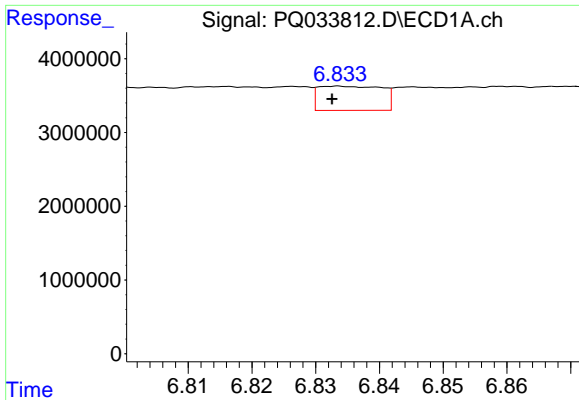
#26 AR-1254-1

R.T.: 6.619 min  
 Delta R.T.: 0.003 min  
 Response: 4690892  
 Conc: 47.33 ng/ml



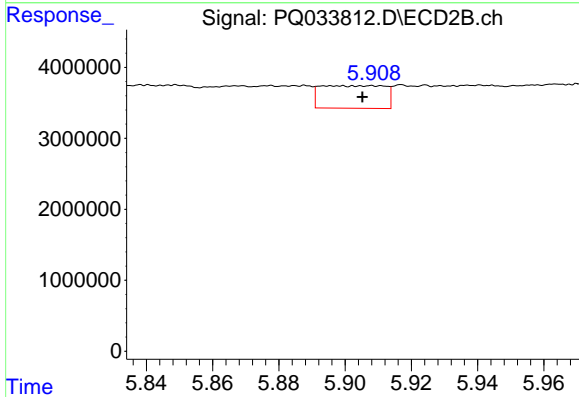
#26 AR-1254-1

R.T.: 5.765 min  
 Delta R.T.: 0.006 min  
 Response: 4987968  
 Conc: 44.27 ng/ml

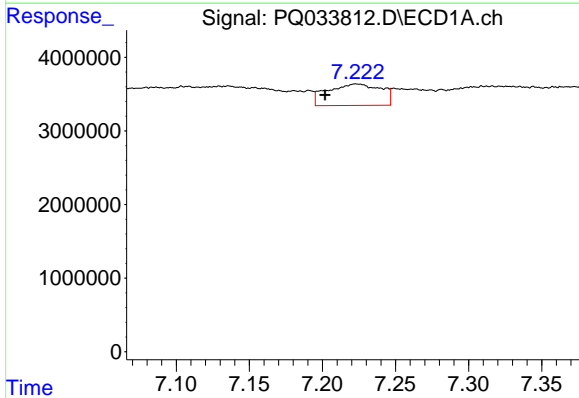


#27 AR-1254-2  
 R.T.: 6.834 min  
 Delta R.T.: 0.001 min  
 Response: 2272414  
 Conc: 14.54 ng/ml

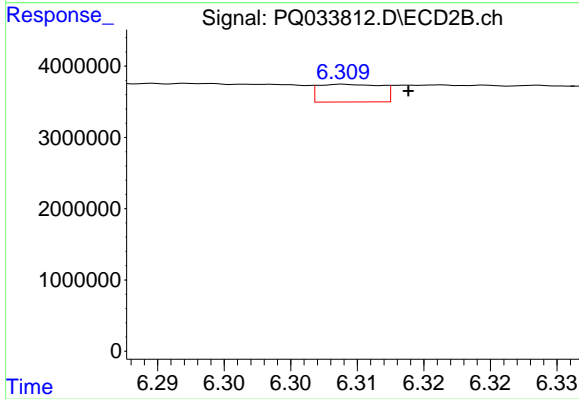
Instrument :  
 ECD\_Q  
 ClientSampled :



#27 AR-1254-2  
 R.T.: 5.908 min  
 Delta R.T.: 0.003 min  
 Response: 4283576  
 Conc: 43.38 ng/ml

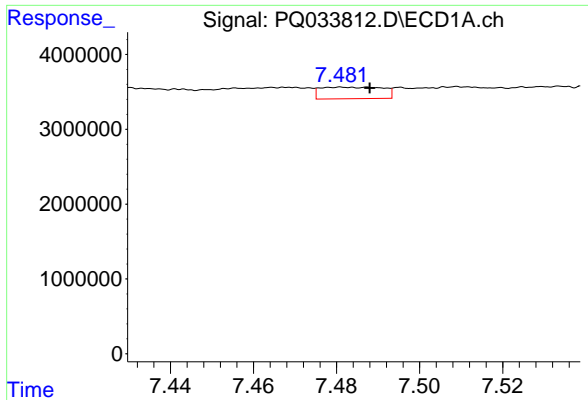


#28 AR-1254-3  
 R.T.: 7.223 min  
 Delta R.T.: 0.021 min  
 Response: 7474044  
 Conc: 44.05 ng/ml



#28 AR-1254-3  
 R.T.: 6.309 min  
 Delta R.T.: -0.005 min  
 Response: 815491  
 Conc: 4.91 ng/ml

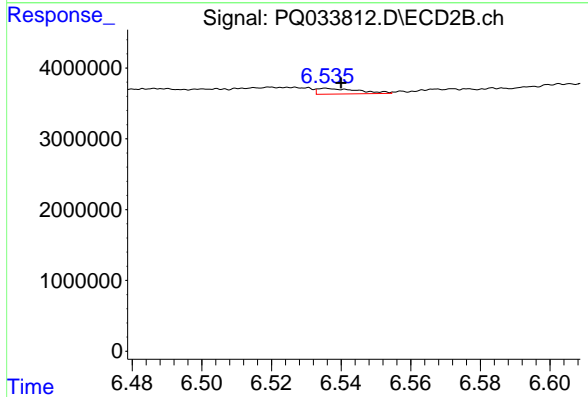




#29 AR-1254-4

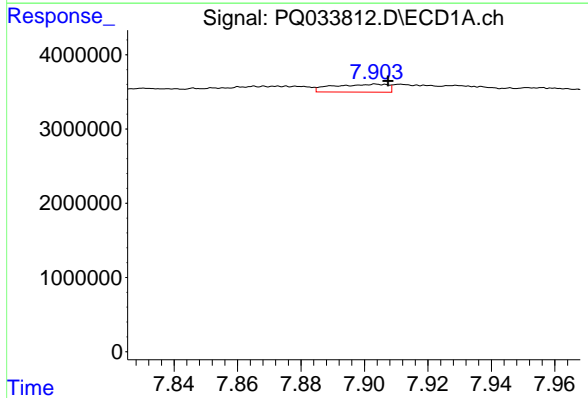
R.T.: 7.481 min  
 Delta R.T.: -0.007 min  
 Response: 1614315  
 Conc: 13.07 ng/ml

Instrument :  
 ECD\_Q  
 ClientSampleId :



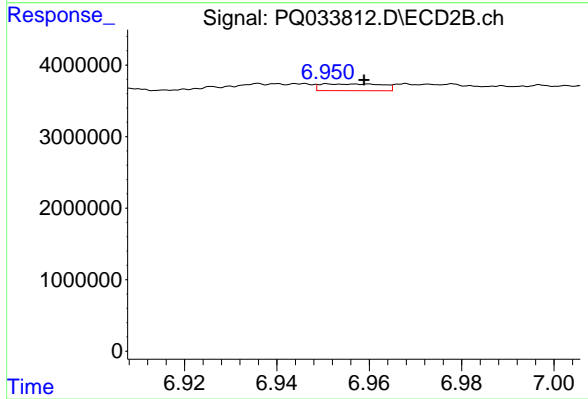
#29 AR-1254-4

R.T.: 6.536 min  
 Delta R.T.: -0.004 min  
 Response: 646173  
 Conc: 6.07 ng/ml



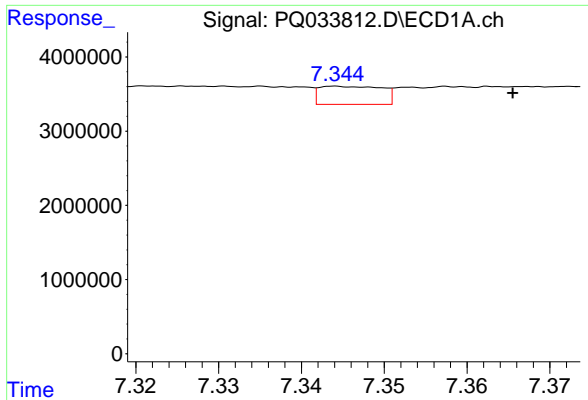
#30 AR-1254-5

R.T.: 7.904 min  
 Delta R.T.: -0.004 min  
 Response: 1276608  
 Conc: 9.64 ng/ml



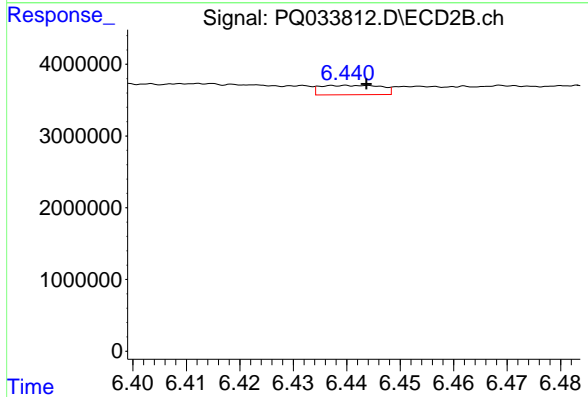
#30 AR-1254-5

R.T.: 6.951 min  
 Delta R.T.: -0.008 min  
 Response: 870012  
 Conc: 5.92 ng/ml

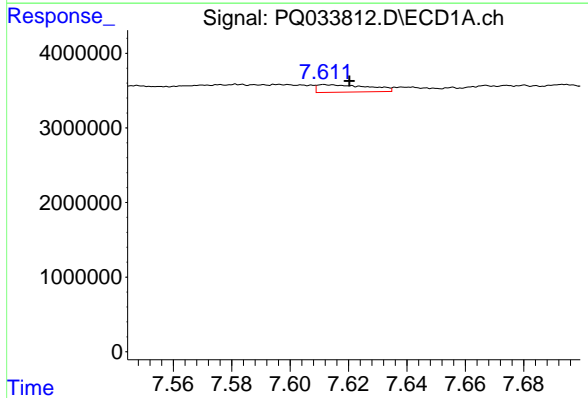


#31 AR-1260-1  
 R.T.: 7.344 min  
 Delta R.T.: -0.021 min  
 Response: 1279129  
 Conc: 11.96 ng/ml

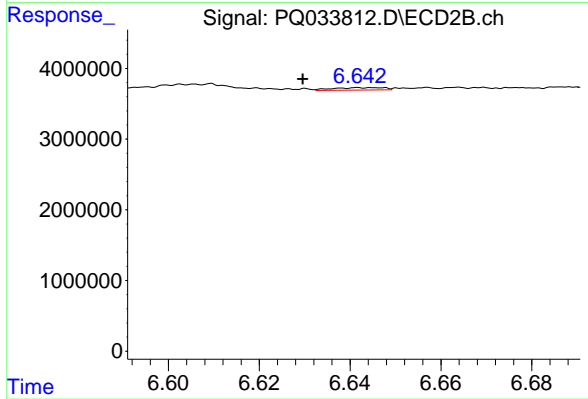
Instrument :  
 ECD\_Q  
 ClientSampleId :



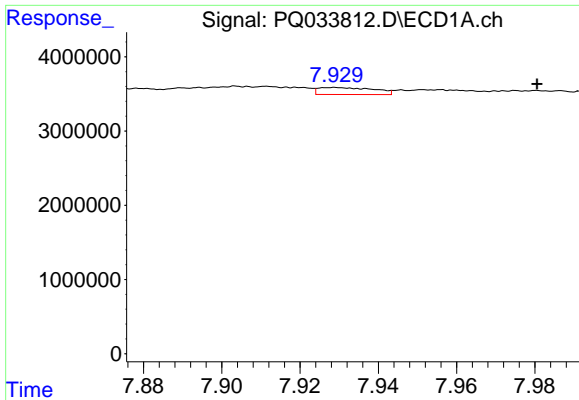
#31 AR-1260-1  
 R.T.: 6.440 min  
 Delta R.T.: -0.004 min  
 Response: 1039820  
 Conc: 11.07 ng/ml



#32 AR-1260-2  
 R.T.: 7.612 min  
 Delta R.T.: -0.009 min  
 Response: 1228494  
 Conc: 9.73 ng/ml



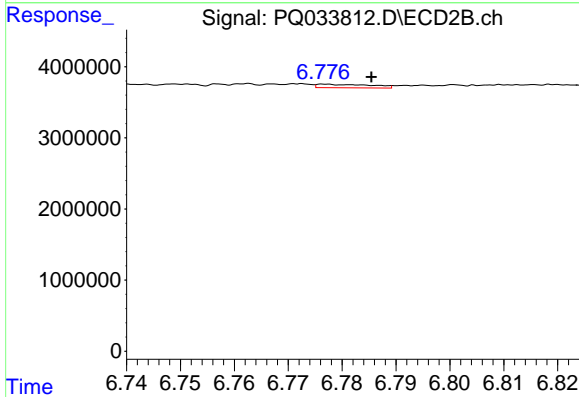
#32 AR-1260-2  
 R.T.: 6.642 min  
 Delta R.T.: 0.012 min  
 Response: 270412  
 Conc: 2.32 ng/ml



#33 AR-1260-3

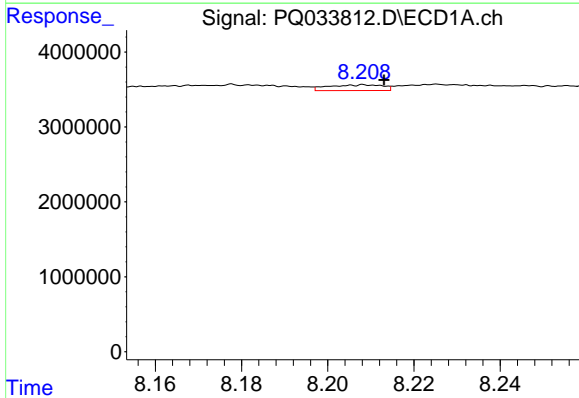
R.T.: 7.929 min  
 Delta R.T.: -0.051 min  
 Response: 922769  
 Conc: 11.85 ng/ml

Instrument :  
 ECD\_Q  
 ClientSampleId :



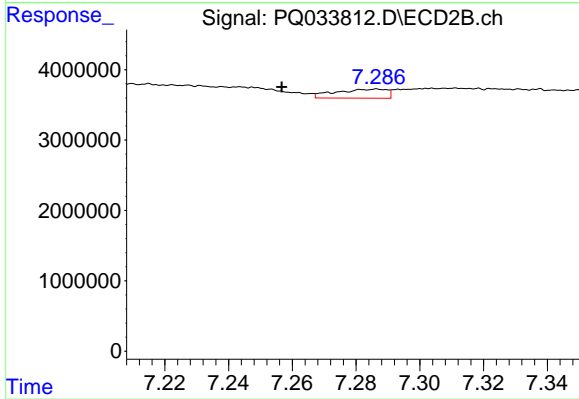
#33 AR-1260-3

R.T.: 6.777 min  
 Delta R.T.: -0.008 min  
 Response: 352755  
 Conc: 3.27 ng/ml



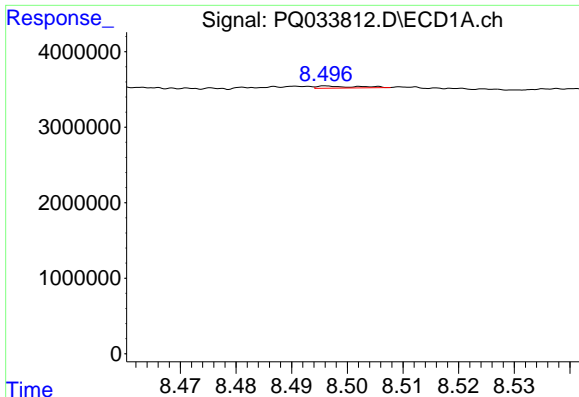
#34 AR-1260-4

R.T.: 8.208 min  
 Delta R.T.: -0.005 min  
 Response: 671598  
 Conc: 6.63 ng/ml



#34 AR-1260-4

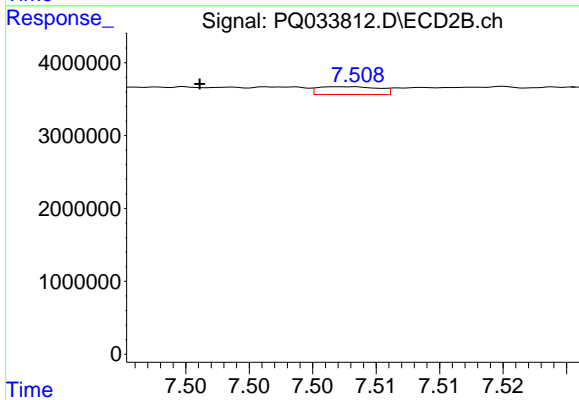
R.T.: 7.287 min  
 Delta R.T.: 0.030 min  
 Response: 1441029  
 Conc: 18.75 ng/ml



#35 AR-1260-5

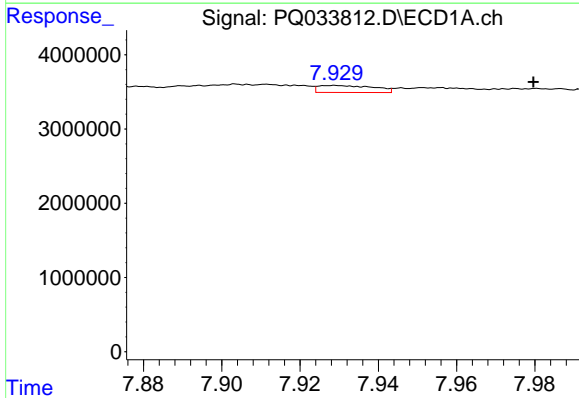
R.T.: 8.496 min  
 Delta R.T.: -0.047 min  
 Response: 140325  
 Conc: 0.74 ng/ml

Instrument :  
 ECD\_Q  
 ClientSampleId :



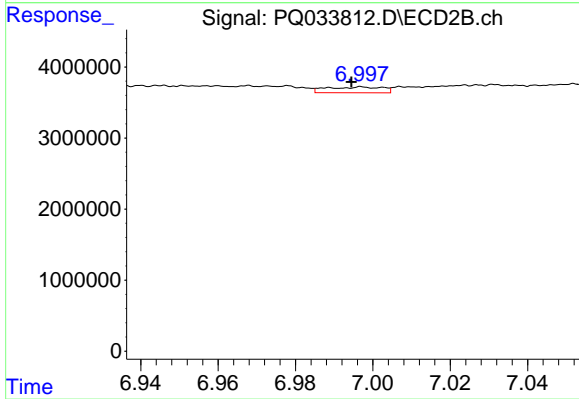
#35 AR-1260-5

R.T.: 7.508 min  
 Delta R.T.: 0.012 min  
 Response: 357848  
 Conc: 1.86 ng/ml



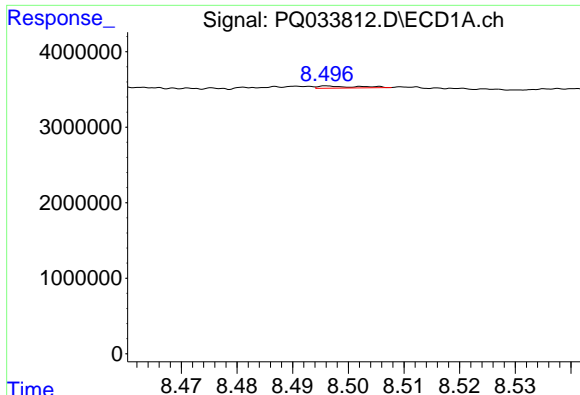
#36 AR-1262-1

R.T.: 7.929 min  
 Delta R.T.: -0.051 min  
 Response: 922769  
 Conc: 6.85 ng/ml



#36 AR-1262-1

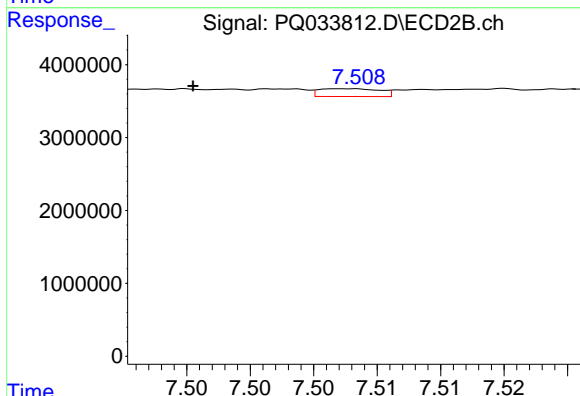
R.T.: 6.997 min  
 Delta R.T.: 0.003 min  
 Response: 827676  
 Conc: 6.44 ng/ml



#37 AR-1262-2

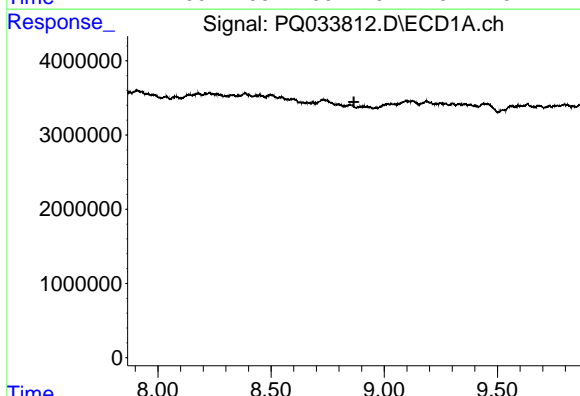
R.T.: 8.496 min  
 Delta R.T.: -0.048 min  
 Response: 140325  
 Conc: 0.57 ng/ml

Instrument :  
 ECD\_Q  
 ClientSampleId :



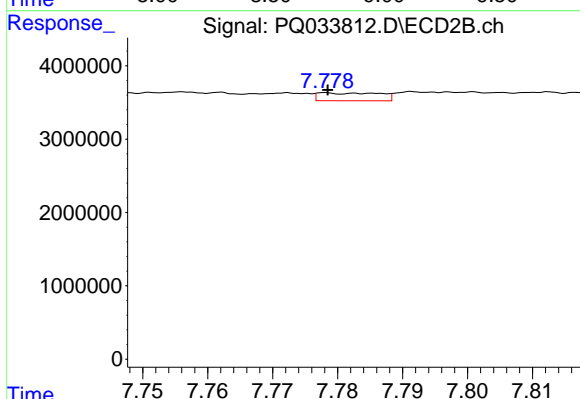
#37 AR-1262-2

R.T.: 7.508 min  
 Delta R.T.: 0.012 min  
 Response: 357848  
 Conc: 1.49 ng/ml



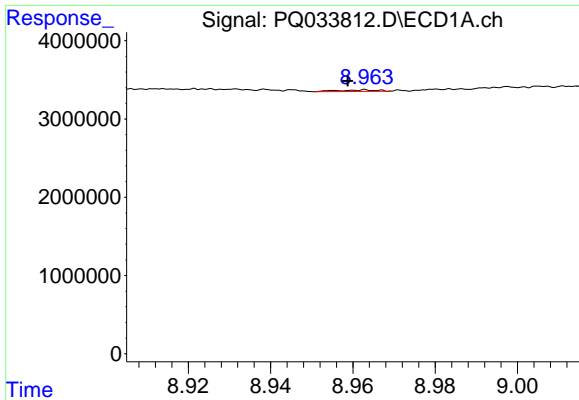
#38 AR-1262-3

R.T.: 0.000 min  
 Exp R.T. : 8.866 min  
 Response: 0  
 Conc: N.D.



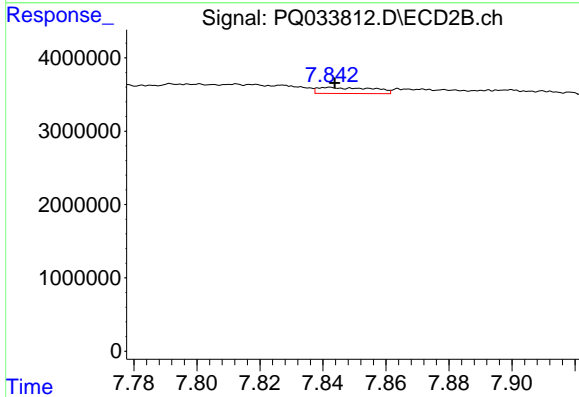
#38 AR-1262-3

R.T.: 7.778 min  
 Delta R.T.: 0.000 min  
 Response: 705293  
 Conc: 7.57 ng/ml

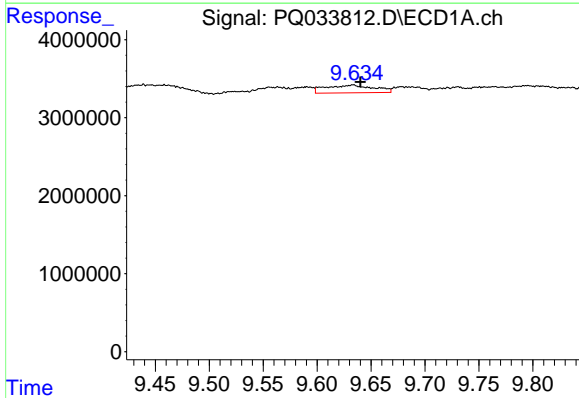


#39 AR-1262-4  
 R.T.: 8.963 min  
 Delta R.T.: 0.004 min  
 Response: 125936  
 Conc: 1.85 ng/ml

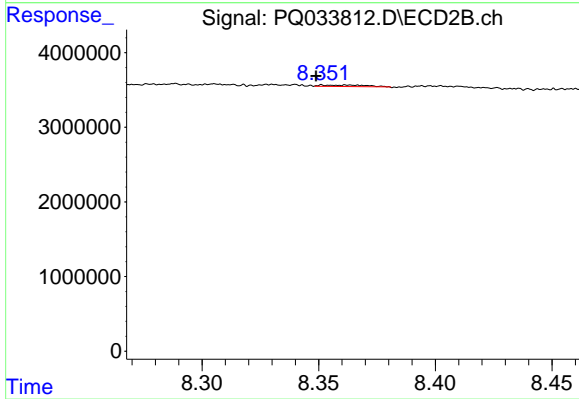
Instrument :  
 ECD\_Q  
 ClientSampled :



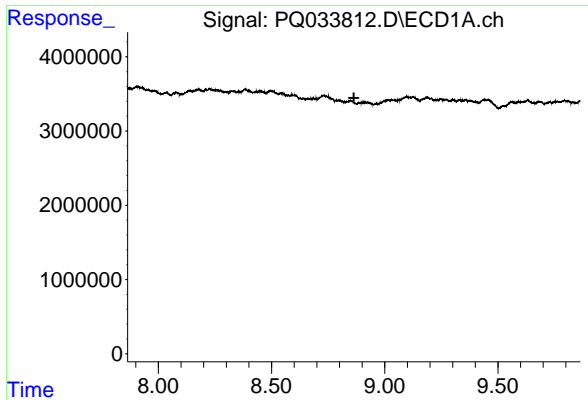
#39 AR-1262-4  
 R.T.: 7.842 min  
 Delta R.T.: -0.001 min  
 Response: 1004900  
 Conc: 5.77 ng/ml



#40 AR-1262-5  
 R.T.: 9.633 min  
 Delta R.T.: -0.007 min  
 Response: 3083296  
 Conc: 35.24 ng/ml



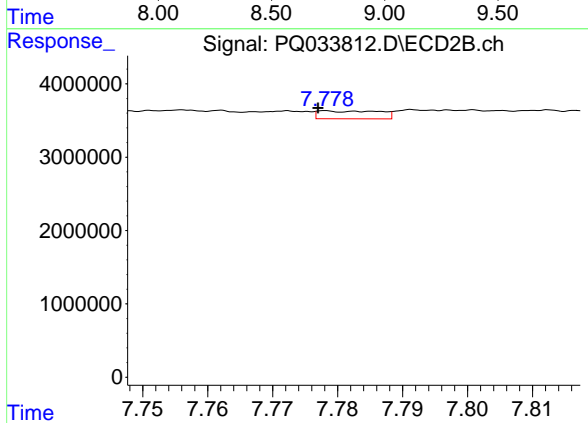
#40 AR-1262-5  
 R.T.: 8.351 min  
 Delta R.T.: 0.002 min  
 Response: 262013  
 Conc: 3.25 ng/ml



#41 AR-1268-1

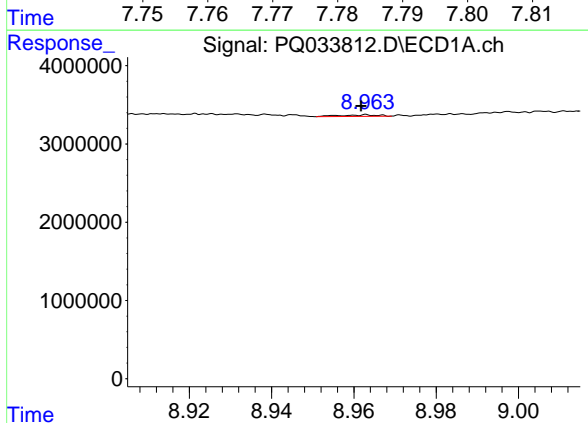
R.T.: 0.000 min  
 Exp R.T.: 8.864 min  
 Response: 0  
 Conc: N.D.

Instrument :  
 ECD\_Q  
 ClientSampled :



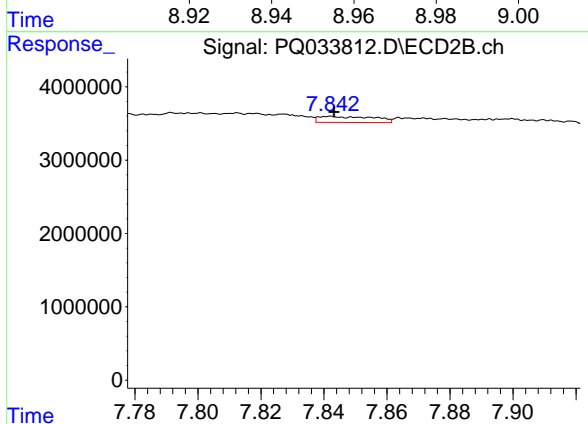
#41 AR-1268-1

R.T.: 7.778 min  
 Delta R.T.: 0.001 min  
 Response: 705293  
 Conc: 2.06 ng/ml



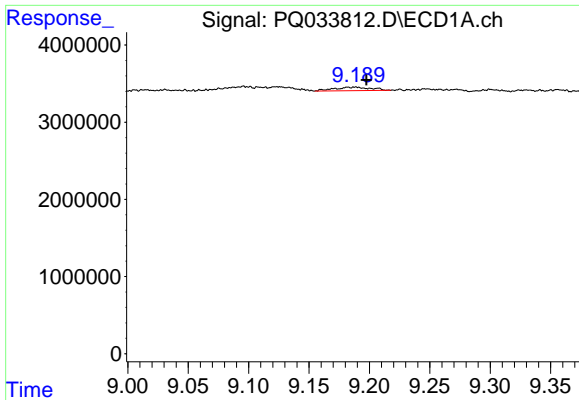
#42 AR-1268-2

R.T.: 8.963 min  
 Delta R.T.: 0.001 min  
 Response: 125936  
 Conc: 0.38 ng/ml



#42 AR-1268-2

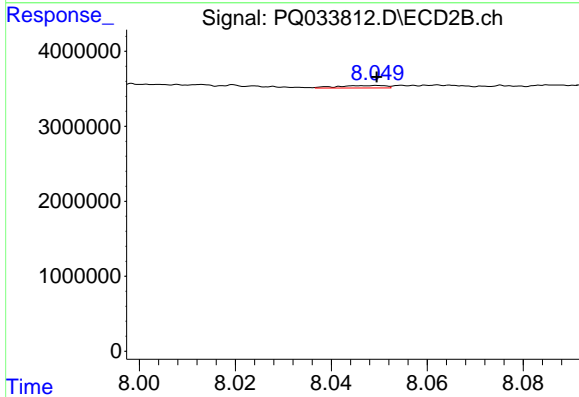
R.T.: 7.842 min  
 Delta R.T.: 0.000 min  
 Response: 1004900  
 Conc: 3.25 ng/ml



#43 AR-1268-3

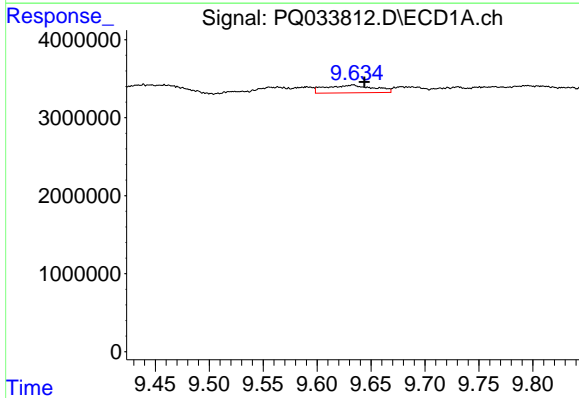
R.T.: 9.189 min  
 Delta R.T.: -0.009 min  
 Response: 952990  
 Conc: 3.38 ng/ml

Instrument :  
 ECD\_Q  
 ClientSampleId :



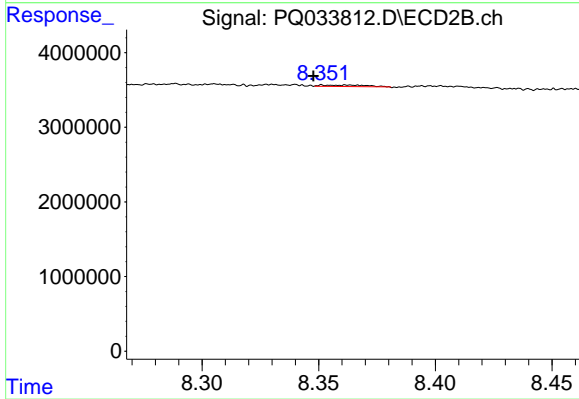
#43 AR-1268-3

R.T.: 8.050 min  
 Delta R.T.: 0.000 min  
 Response: 220489  
 Conc: 0.86 ng/ml



#44 AR-1268-4

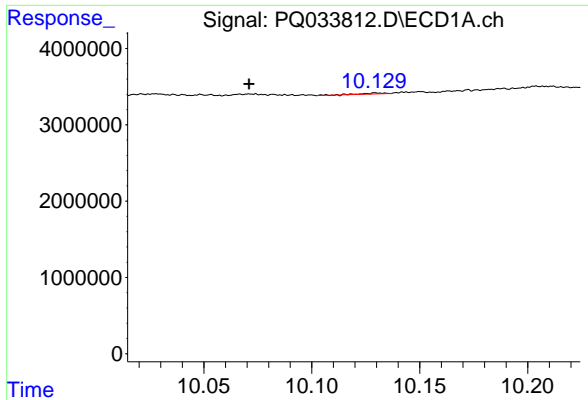
R.T.: 9.633 min  
 Delta R.T.: -0.010 min  
 Response: 3083296  
 Conc: 25.52 ng/ml



#44 AR-1268-4

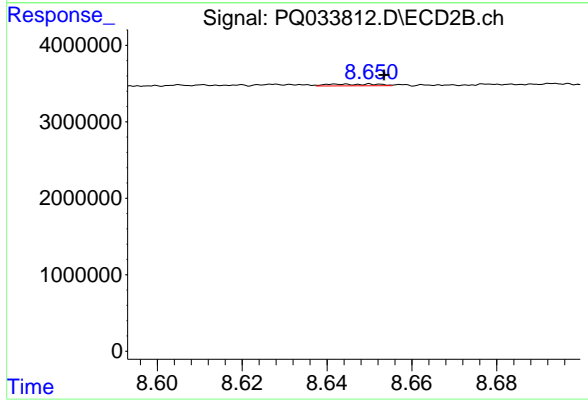
R.T.: 8.351 min  
 Delta R.T.: 0.004 min  
 Response: 262013  
 Conc: 2.38 ng/ml





#45 AR-1268-5  
 R.T.: 10.130 min  
 Delta R.T.: 0.059 min  
 Response: 80286  
 Conc: 0.09 ng/ml

Instrument :  
 ECD\_Q  
 ClientSampleId :



#45 AR-1268-5  
 R.T.: 8.650 min  
 Delta R.T.: -0.003 min  
 Response: 184938  
 Conc: 0.22 ng/ml