

Data Path : Z:\pestpcbsrv\HPCHEM1\ECD\_Q\Data\PQ120318\  
 Data File : PQ035191.D  
 Signal(s) : Signal #1: ECD1A.ch Signal #2: ECD2B.ch  
 Acq On : 03 Dec 2018 09:35  
 Operator : SM\SJ  
 Sample : J6074-01RE  
 Misc :  
 ALS Vial : 4 Sample Multiplier: 1

Instrument :  
 ECD\_Q  
 ClientSampled :

Integration File signal 1: autoint1.e  
 Integration File signal 2: autoint2.e  
 Quant Time: Dec 03 09:53:57 2018  
 Quant Method : Z:\pestpcbsrv\HPCHEM1\ECD\_Q\Method\PQ120218.M  
 Quant Title : GC EXTRACTABLES  
 QLast Update : Mon Dec 03 08:50:54 2018  
 Response via : Initial Calibration  
 Integrator: ChemStation

Volume Inj. : 2 µl  
 Signal #1 Phase : ZB-MR1 Signal #2 Phase: ZB-MR2  
 Signal #1 Info : 30Mx0.32mmx 0.50µ Signal #2 Info : 30M x 0.32mm x 0.25µm

Compound	RT#1	RT#2	Resp#1	Resp#2	ng/ml	ng/ml
System Monitoring Compounds						
1) SA Tetrachlo...	4.452	3.753	67888398	40131975	19.862	20.950
2) SA Decachlor...	10.183	8.749	37851332	20126638	10.681	9.544
Target Compounds						
3) L1 AR-1016-1	5.620	4.835	3769957	1545004	31.506	21.770 #
4) L1 AR-1016-2	5.643	4.854	4680104	2456337	25.562	23.773
5) L1 AR-1016-3	5.711	5.070	3543217	3738573	31.593	69.651 #
6) L1 AR-1016-4	5.811	5.070	7590563	3738573	83.973	86.703
7) L1 AR-1016-5	6.097	5.284	4513781	1819581	48.944	31.617 #
10) L2 AR-1221-3	0.000	4.174	0	1460598	N.D.	29.728 #
11) L3 AR-1232-1	0.000	4.174	0	1460598	N.D.	36.280 #
12) L3 AR-1232-2	0.000	4.854	0	2456337	N.D.	51.209 #
13) L3 AR-1232-3	5.643	5.070	4680104	3738573	58.621	155.968 #
14) L3 AR-1232-4	5.811	5.111	7590563	3088514	191.757	145.746
15) L3 AR-1232-5	5.892	5.284	4565590	1819581	155.542	77.355 #
16) L4 AR-1242-1	5.620	4.835	3769957	1545004	37.348	25.140 #
17) L4 AR-1242-2	5.643	4.854	4680104	2456337	30.788	26.950
18) L4 AR-1242-3	5.711	5.070	3543217	3738573	39.139	78.206 #
19) L4 AR-1242-4	5.811	5.111	7590563	3088514	101.958	67.058 #
20) L4 AR-1242-5	6.540	5.634	5929563	7202967	69.854	122.410 #
21) L5 AR-1248-1	5.620	4.835	3769957	1545004	50.390	33.478 #
22) L5 AR-1248-2	5.892	5.070	4565590	3738573	42.571	59.953 #
23) L5 AR-1248-3	6.097	5.111	4513781	3088514	35.884	48.339 #
24) L5 AR-1248-4	6.475	5.284	15485583	1819581	107.745	22.572 #
25) L5 AR-1248-5	6.540	5.676	5929563	1688612	43.325	20.475 #
26) L6 AR-1254-1	6.475	5.634	15485583	7202967	98.340	51.068 #
27) L6 AR-1254-2	6.691	5.780	14803851	5820429	58.687	49.159
28) L6 AR-1254-3	7.061	6.183	14860819	10453282	54.831	51.066
29) L6 AR-1254-4	7.345	6.410	6547927	2771653	34.494	21.660 #
30) L6 AR-1254-5	7.765	6.825	10037980	4597326	52.212	27.217 #
31) L7 AR-1260-1	7.221	6.311	5734519	3678805	28.700	28.396
32) L7 AR-1260-2	7.476	6.497	8614539	5415826	37.601	33.440
33) L7 AR-1260-3	7.836	6.651	2636237	3708026	18.761	24.573 #
34) L7 AR-1260-4	8.060	7.118	6653506	2357829	36.978	21.558 #
35) L7 AR-1260-5	8.387	7.361	9454845	3992044	26.605	14.706 #
36) L8 AR-1262-1	7.836	6.825	2636237	4597326	12.227	28.566 #
37) L8 AR-1262-2	8.387	7.361	9454845	3992044	25.792	14.278 #
38) L8 AR-1262-3	8.716	7.706	3789578	2574066	16.541	25.773 #
39) L8 AR-1262-4	8.771	7.706	237179	2574066	1.385	13.538 #
41) L9 AR-1268-1	8.716	7.706	3789578	2574066	6.835	6.419
42) L9 AR-1268-2	8.771	7.706	237179	2574066	0.469	7.173 #
43) L9 AR-1268-3	9.026	0.000	4059249	0	9.485	N.D. #

Data Path : Z:\pestpcbsrv\HPCHEM1\ECD\_Q\Data\PQ120318\  
Data File : PQ035191.D  
Signal(s) : Signal #1: ECD1A.ch Signal #2: ECD2B.ch  
Acq On : 03 Dec 2018 09:35  
Operator : SM\SJ  
Sample : J6074-01RE  
Misc :  
ALS Vial : 4 Sample Multiplier: 1

Instrument :  
ECD\_Q  
ClientSampleId :

Integration File signal 1: autoint1.e  
Integration File signal 2: autoint2.e  
Quant Time: Dec 03 09:53:57 2018  
Quant Method : Z:\pestpcbsrv\HPCHEM1\ECD\_Q\Method\PQ120218.M  
Quant Title : GC EXTRACTABLES  
QLast Update : Mon Dec 03 08:50:54 2018  
Response via : Initial Calibration  
Integrator: ChemStation

Volume Inj. : 2 µl  
Signal #1 Phase : ZB-MR1 Signal #2 Phase: ZB-MR2  
Signal #1 Info : 30Mx0.32mmx 0.50µ Signal #2 Info : 30M x 0.32mm x 0.25µm

Compound	RT#1	RT#2	Resp#1	Resp#2	ng/ml	ng/ml
----------	------	------	--------	--------	-------	-------

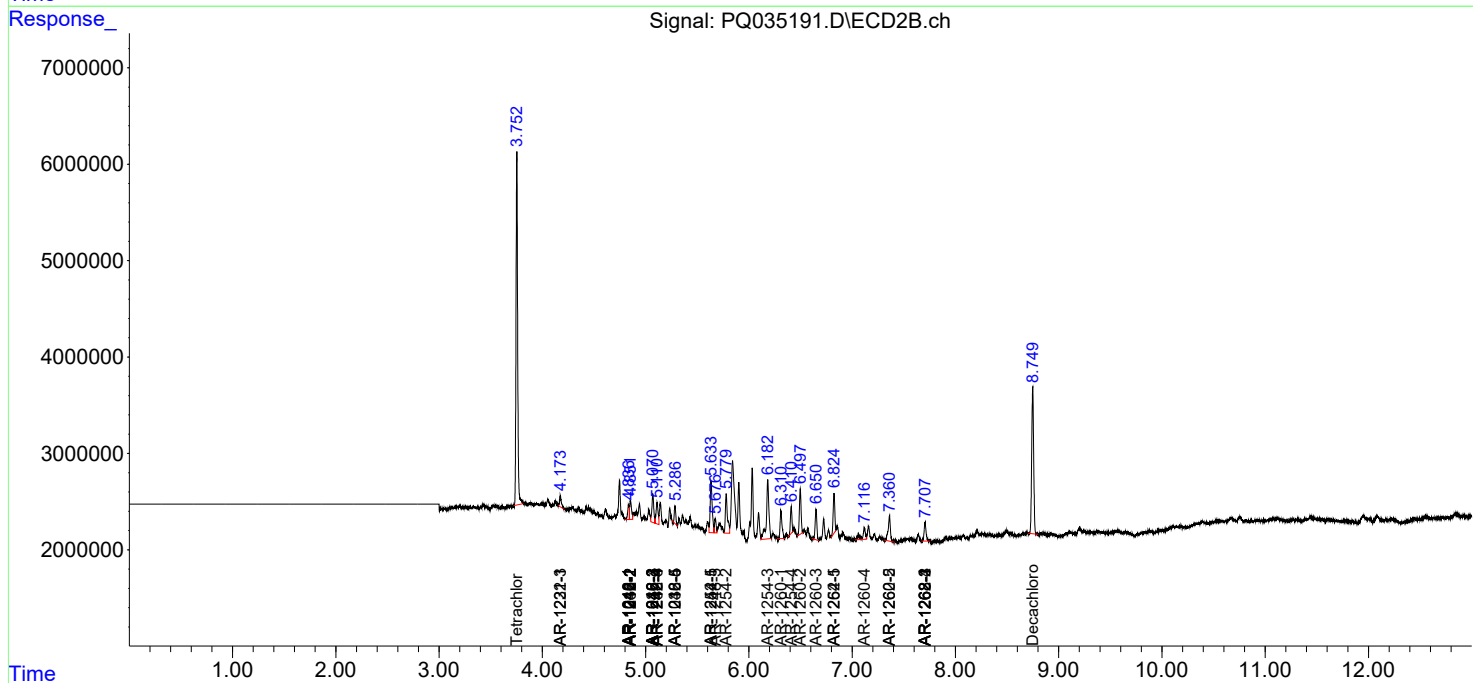
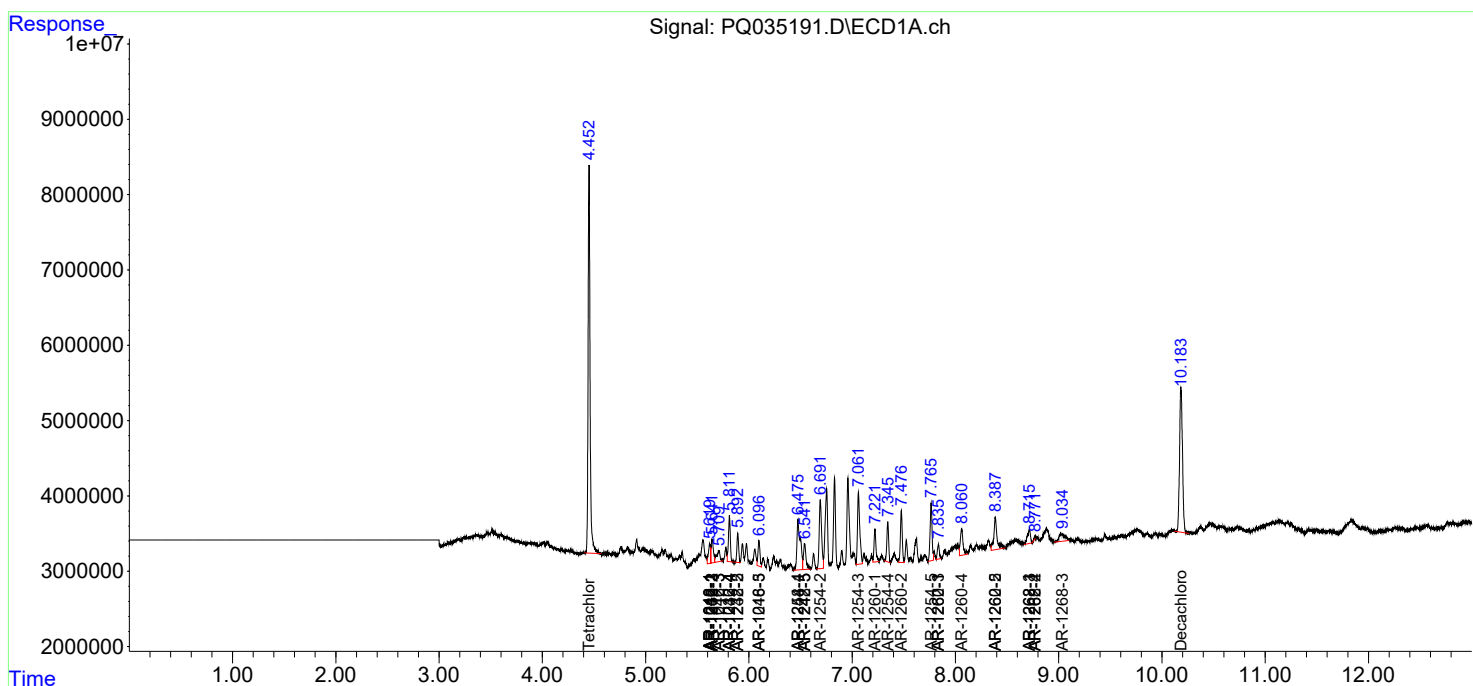
(f)=RT Delta > 1/2 Window (#)=Amounts differ by > 25% (m)=manual int.

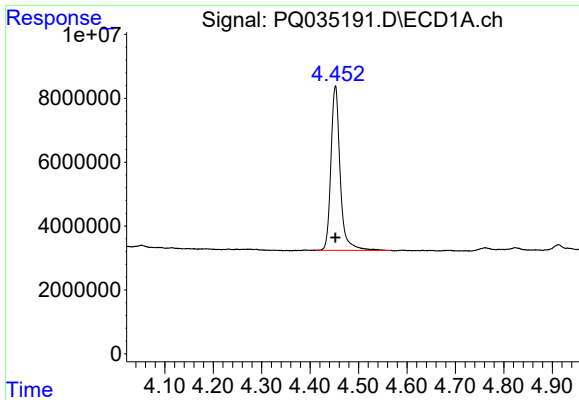
Data Path : Z:\pestpcbsrv\HPCHEM1\ECD\_Q\Data\PQ120318\  
 Data File : PQ035191.D  
 Signal(s) : Signal #1: ECD1A.ch Signal #2: ECD2B.ch  
 Acq On : 03 Dec 2018 09:35  
 Operator : SM\SJ  
 Sample : J6074-01RE  
 Misc :  
 ALS Vial : 4 Sample Multiplier: 1

Instrument :  
 ECD\_Q  
 ClientSampled :

Integration File signal 1: autoint1.e  
 Integration File signal 2: autoint2.e  
 Quant Time: Dec 03 09:53:57 2018  
 Quant Method : Z:\pestpcbsrv\HPCHEM1\ECD\_Q\Method\PQ120218.M  
 Quant Title : GC EXTRACTABLES  
 QLast Update : Mon Dec 03 08:50:54 2018  
 Response via : Initial Calibration  
 Integrator: ChemStation

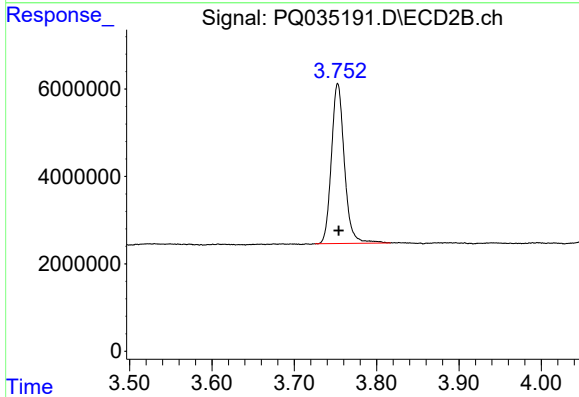
Volume Inj. : 2 µl  
 Signal #1 Phase : ZB-MR1 Signal #2 Phase: ZB-MR2  
 Signal #1 Info : 30Mx0.32mmx 0.50µ Signal #2 Info : 30M x 0.32mm x 0.25µm



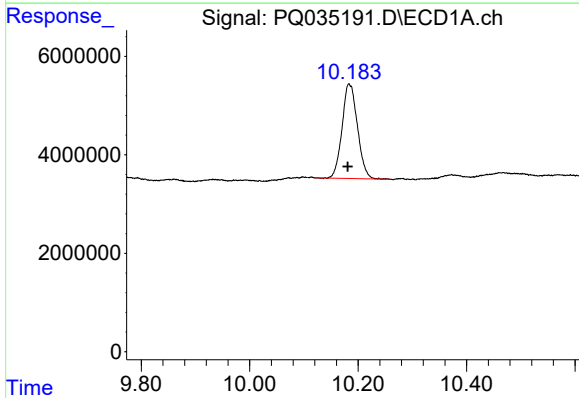


#1 Tetrachloro-m-xylene  
 R.T.: 4.452 min  
 Delta R.T.: 0.000 min  
 Response: 67888398  
 Conc: 19.86 ng/ml

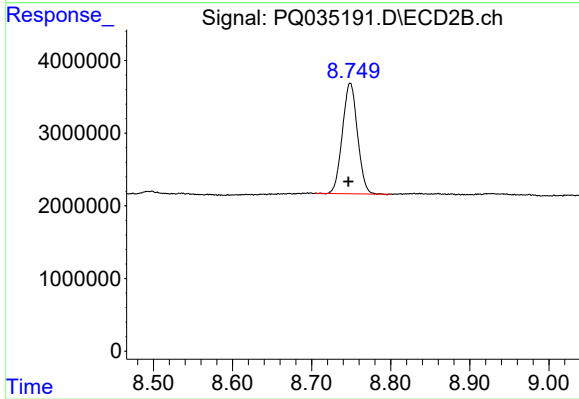
Instrument :  
 ECD\_Q  
 ClientSampleId :



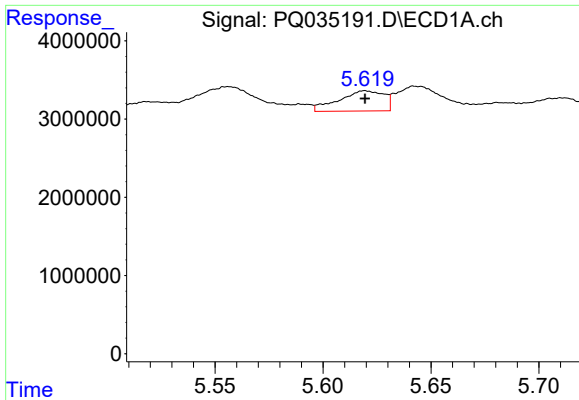
#1 Tetrachloro-m-xylene  
 R.T.: 3.753 min  
 Delta R.T.: -0.001 min  
 Response: 40131975  
 Conc: 20.95 ng/ml



#2 Decachlorobiphenyl  
 R.T.: 10.183 min  
 Delta R.T.: 0.002 min  
 Response: 37851332  
 Conc: 10.68 ng/ml



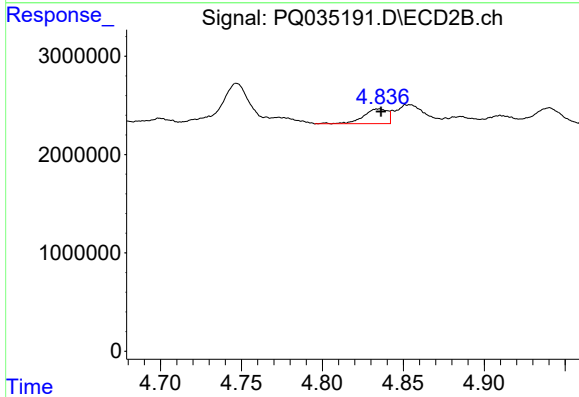
#2 Decachlorobiphenyl  
 R.T.: 8.749 min  
 Delta R.T.: 0.002 min  
 Response: 20126638  
 Conc: 9.54 ng/ml



#3 AR-1016-1

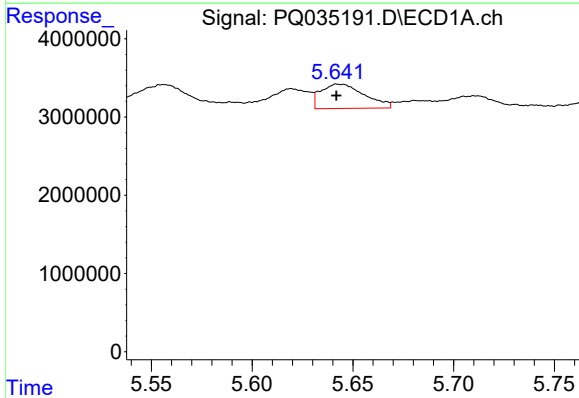
R.T.: 5.620 min  
 Delta R.T.: 0.000 min  
 Response: 3769957  
 Conc: 31.51 ng/ml

Instrument :  
 ECD\_Q  
 ClientSampleId :



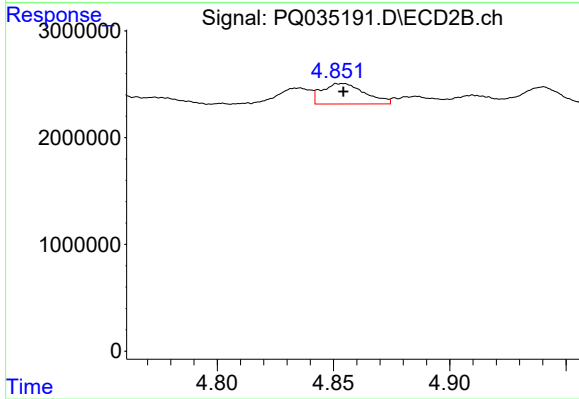
#3 AR-1016-1

R.T.: 4.835 min  
 Delta R.T.: -0.001 min  
 Response: 1545004  
 Conc: 21.77 ng/ml



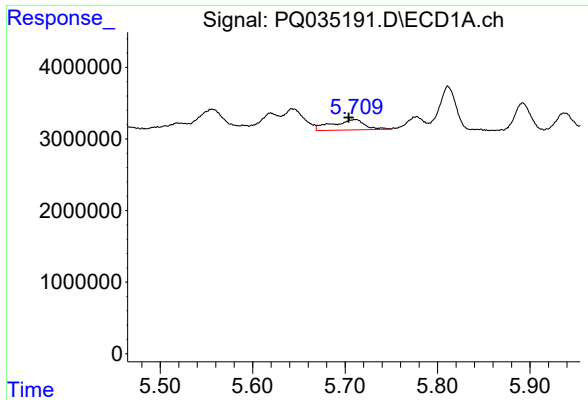
#4 AR-1016-2

R.T.: 5.643 min  
 Delta R.T.: 0.001 min  
 Response: 4680104  
 Conc: 25.56 ng/ml



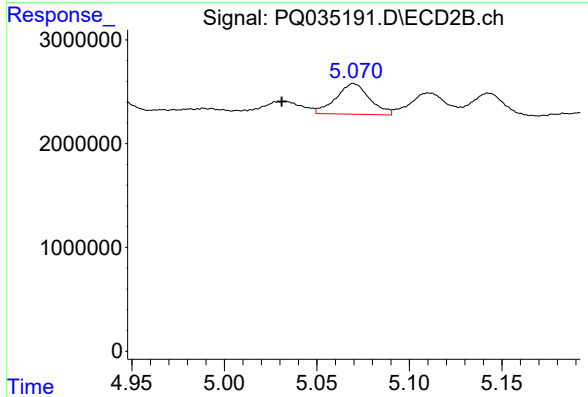
#4 AR-1016-2

R.T.: 4.854 min  
 Delta R.T.: 0.000 min  
 Response: 2456337  
 Conc: 23.77 ng/ml

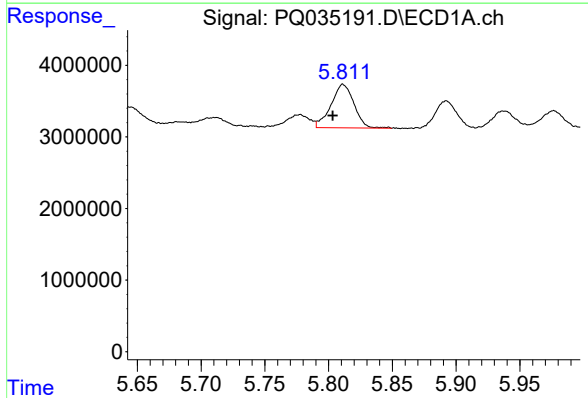


#5 AR-1016-3  
 R.T.: 5.711 min  
 Delta R.T.: 0.007 min  
 Response: 3543217  
 Conc: 31.59 ng/ml

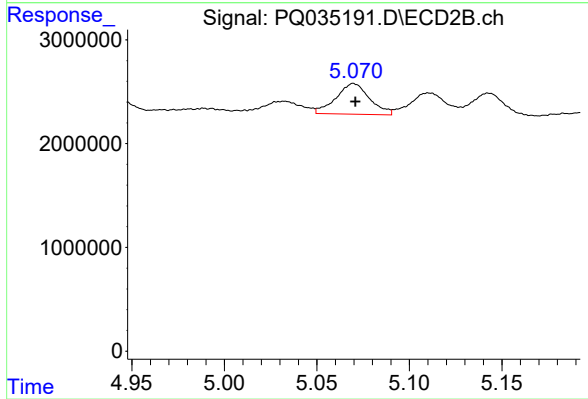
Instrument :  
 ECD\_Q  
 ClientSampleId :



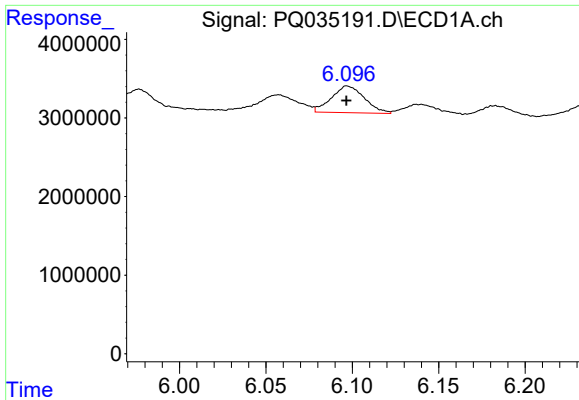
#5 AR-1016-3  
 R.T.: 5.070 min  
 Delta R.T.: 0.039 min  
 Response: 3738573  
 Conc: 69.65 ng/ml



#6 AR-1016-4  
 R.T.: 5.811 min  
 Delta R.T.: 0.008 min  
 Response: 7590563  
 Conc: 83.97 ng/ml



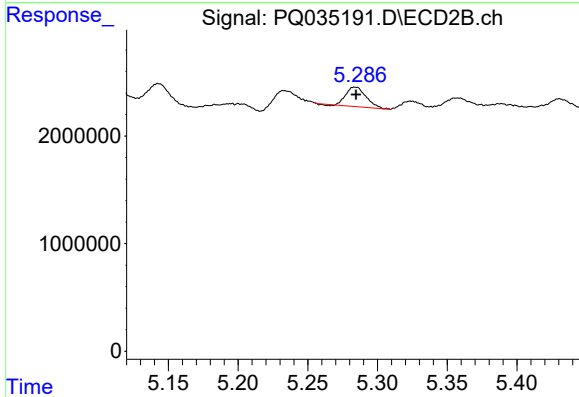
#6 AR-1016-4  
 R.T.: 5.070 min  
 Delta R.T.: 0.000 min  
 Response: 3738573  
 Conc: 86.70 ng/ml



#7 AR-1016-5

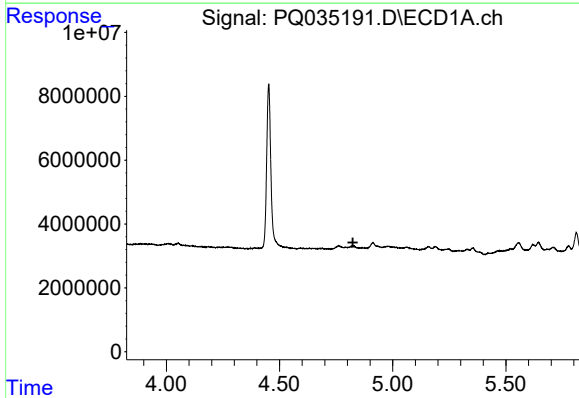
R.T.: 6.097 min  
 Delta R.T.: 0.000 min  
 Response: 4513781  
 Conc: 48.94 ng/ml

Instrument :  
 ECD\_Q  
 ClientSampled :



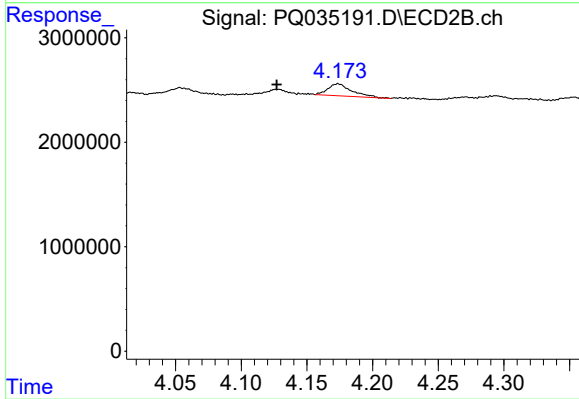
#7 AR-1016-5

R.T.: 5.284 min  
 Delta R.T.: 0.000 min  
 Response: 1819581  
 Conc: 31.62 ng/ml



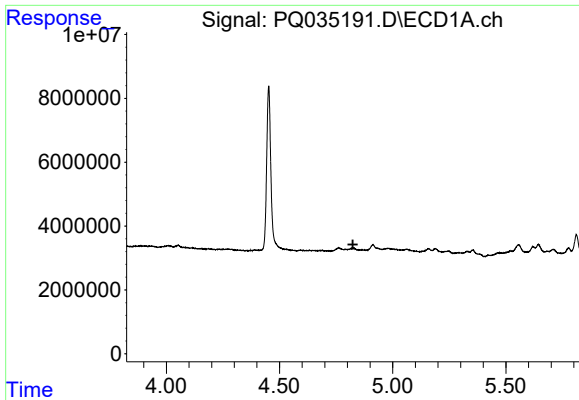
#10 AR-1221-3

R.T.: 0.000 min  
 Exp R.T. : 4.824 min  
 Response: 0  
 Conc: N.D.



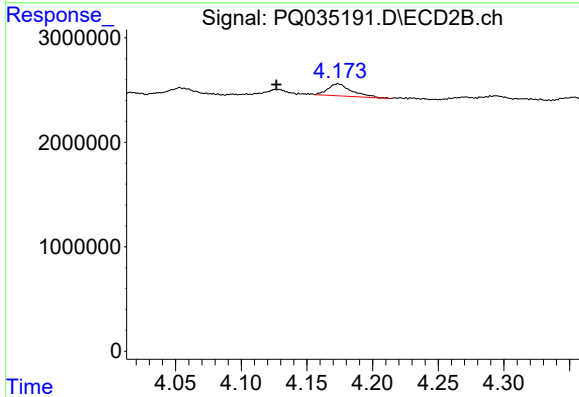
#10 AR-1221-3

R.T.: 4.174 min  
 Delta R.T.: 0.047 min  
 Response: 1460598  
 Conc: 29.73 ng/ml

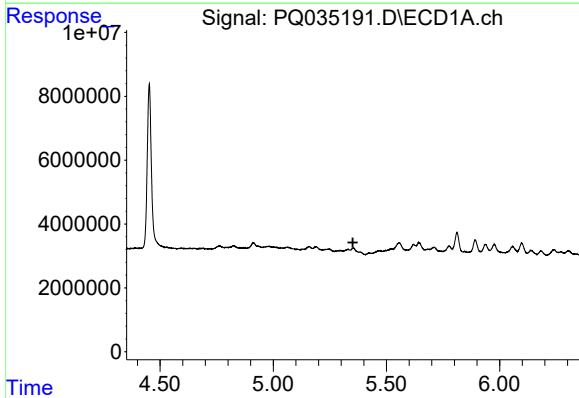


#11 AR-1232-1  
 R.T.: 0.000 min  
 Exp R.T. : 4.824 min  
 Response: 0  
 Conc: N.D.

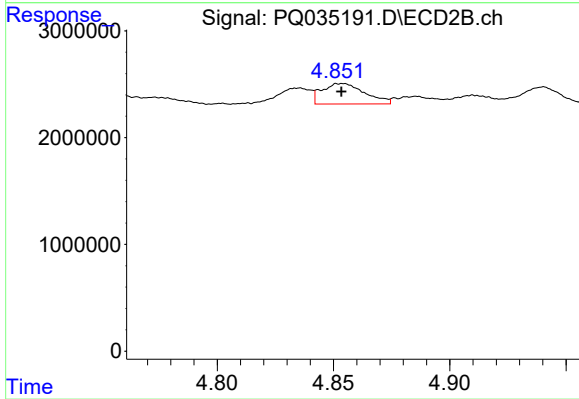
Instrument :  
 ECD\_Q  
 ClientSampleId :



#11 AR-1232-1  
 R.T.: 4.174 min  
 Delta R.T.: 0.047 min  
 Response: 1460598  
 Conc: 36.28 ng/ml

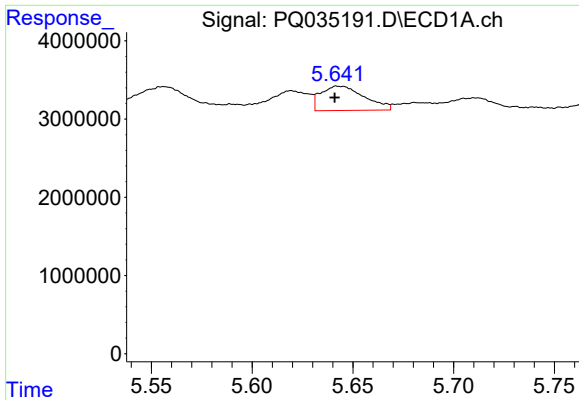


#12 AR-1232-2  
 R.T.: 0.000 min  
 Exp R.T. : 5.352 min  
 Response: 0  
 Conc: N.D.



#12 AR-1232-2  
 R.T.: 4.854 min  
 Delta R.T.: 0.000 min  
 Response: 2456337  
 Conc: 51.21 ng/ml

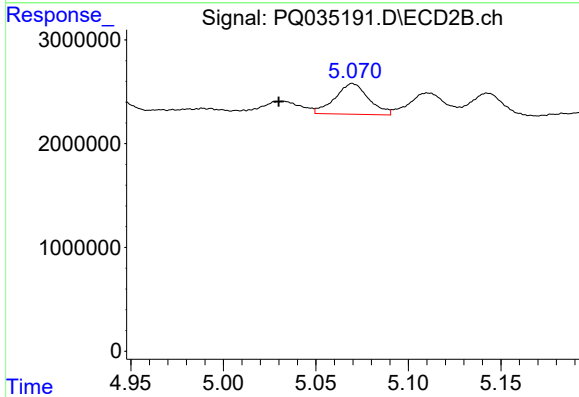




#13 AR-1232-3

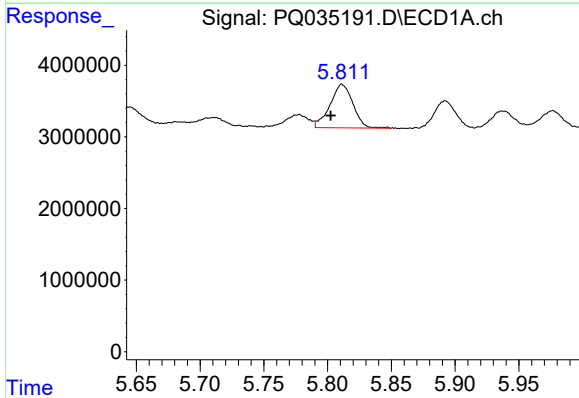
R.T.: 5.643 min  
 Delta R.T.: 0.002 min  
 Response: 4680104  
 Conc: 58.62 ng/ml

Instrument :  
 ECD\_Q  
 ClientSampleId :



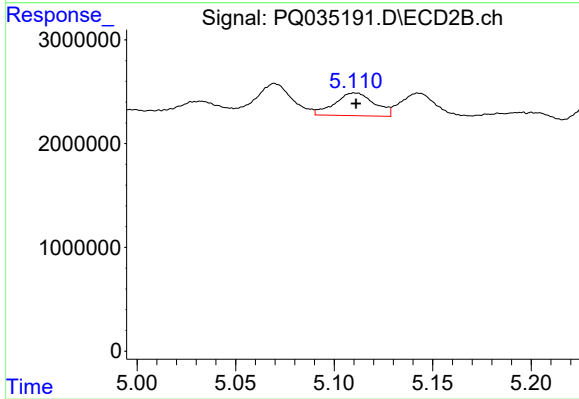
#13 AR-1232-3

R.T.: 5.070 min  
 Delta R.T.: 0.040 min  
 Response: 3738573  
 Conc: 155.97 ng/ml



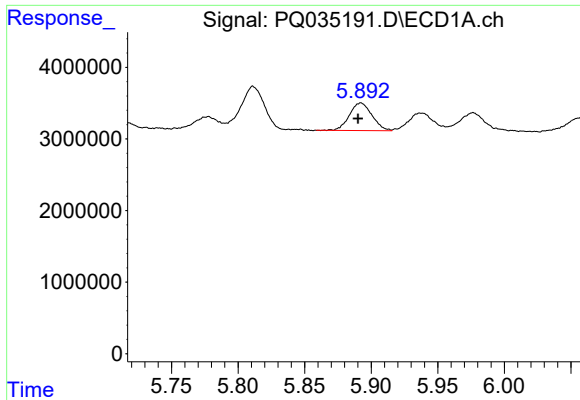
#14 AR-1232-4

R.T.: 5.811 min  
 Delta R.T.: 0.009 min  
 Response: 7590563  
 Conc: 191.76 ng/ml



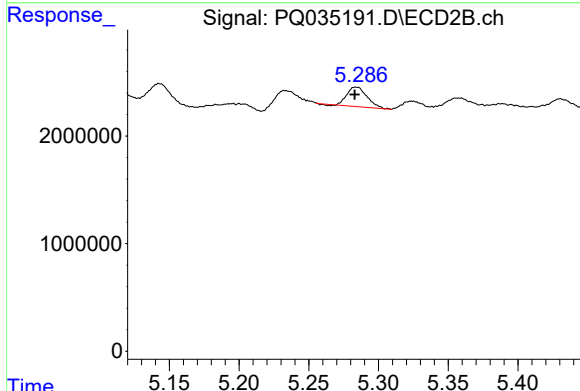
#14 AR-1232-4

R.T.: 5.111 min  
 Delta R.T.: 0.000 min  
 Response: 3088514  
 Conc: 145.75 ng/ml

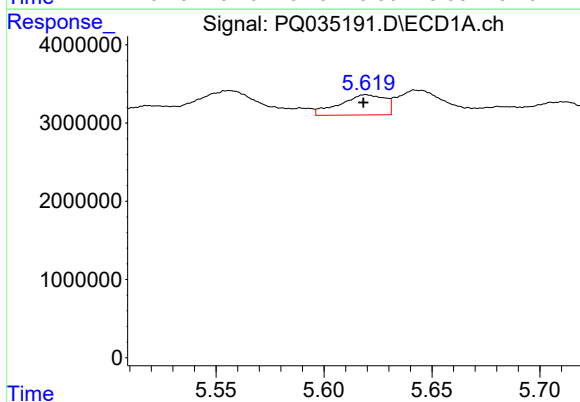


#15 AR-1232-5  
 R.T.: 5.892 min  
 Delta R.T.: 0.002 min  
 Response: 4565590  
 Conc: 155.54 ng/ml

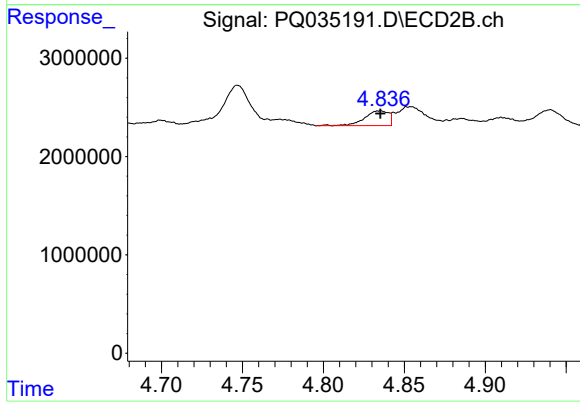
Instrument :  
 ECD\_Q  
 ClientSampleId :



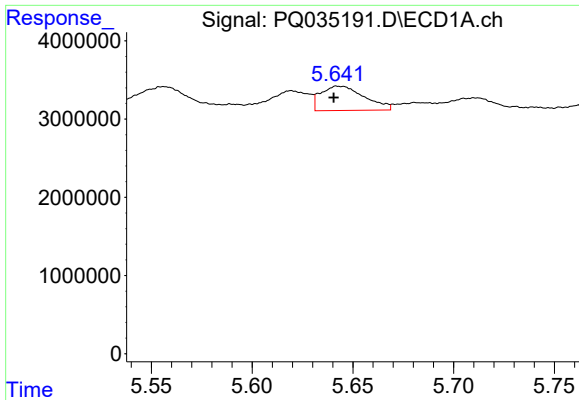
#15 AR-1232-5  
 R.T.: 5.284 min  
 Delta R.T.: 0.001 min  
 Response: 1819581  
 Conc: 77.36 ng/ml



#16 AR-1242-1  
 R.T.: 5.620 min  
 Delta R.T.: 0.001 min  
 Response: 3769957  
 Conc: 37.35 ng/ml



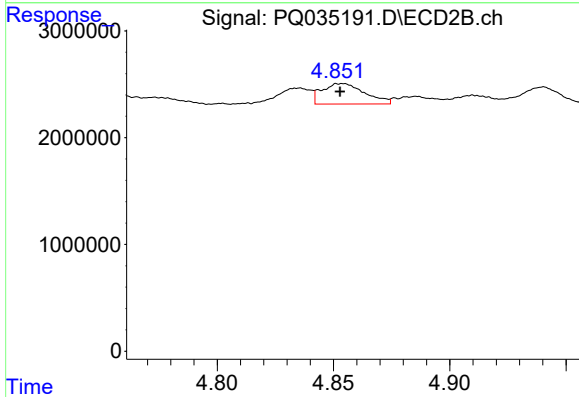
#16 AR-1242-1  
 R.T.: 4.835 min  
 Delta R.T.: 0.000 min  
 Response: 1545004  
 Conc: 25.14 ng/ml



#17 AR-1242-2

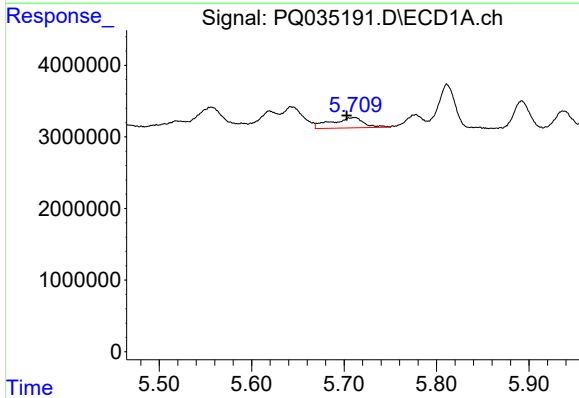
R.T.: 5.643 min  
 Delta R.T.: 0.003 min  
 Response: 4680104  
 Conc: 30.79 ng/ml

Instrument :  
 ECD\_Q  
 ClientSampleId :



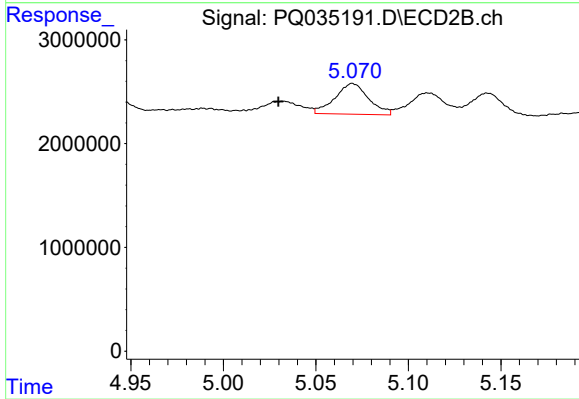
#17 AR-1242-2

R.T.: 4.854 min  
 Delta R.T.: 0.000 min  
 Response: 2456337  
 Conc: 26.95 ng/ml



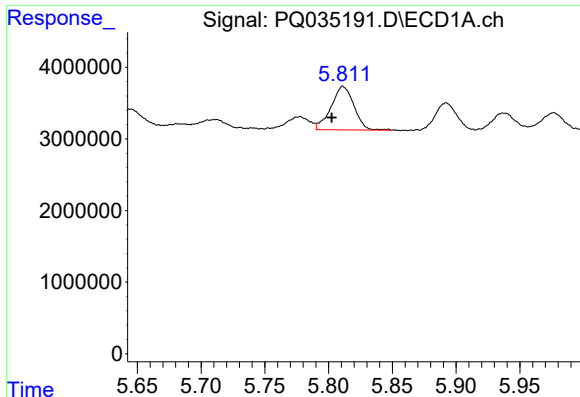
#18 AR-1242-3

R.T.: 5.711 min  
 Delta R.T.: 0.008 min  
 Response: 3543217  
 Conc: 39.14 ng/ml



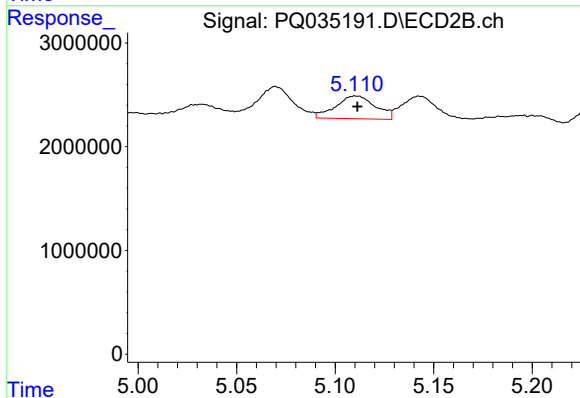
#18 AR-1242-3

R.T.: 5.070 min  
 Delta R.T.: 0.040 min  
 Response: 3738573  
 Conc: 78.21 ng/ml

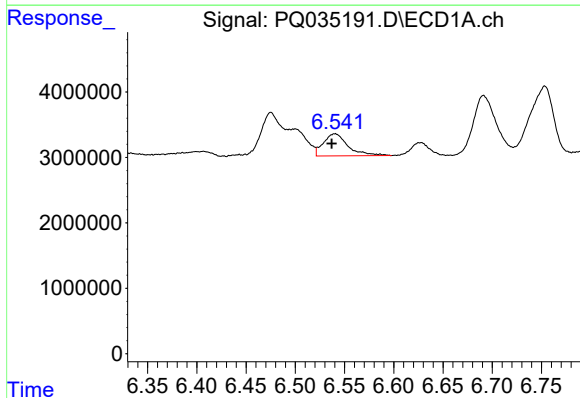


#19 AR-1242-4  
 R.T.: 5.811 min  
 Delta R.T.: 0.009 min  
 Response: 7590563  
 Conc: 101.96 ng/ml

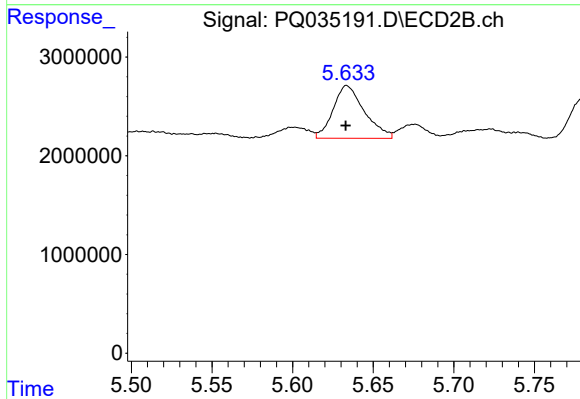
Instrument :  
 ECD\_Q  
 ClientSampleId :



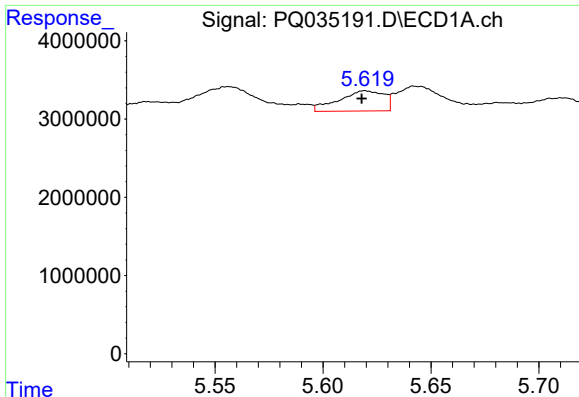
#19 AR-1242-4  
 R.T.: 5.111 min  
 Delta R.T.: 0.000 min  
 Response: 3088514  
 Conc: 67.06 ng/ml



#20 AR-1242-5  
 R.T.: 6.540 min  
 Delta R.T.: 0.003 min  
 Response: 5929563  
 Conc: 69.85 ng/ml



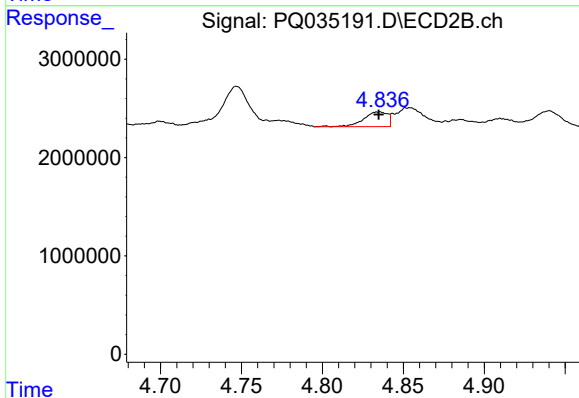
#20 AR-1242-5  
 R.T.: 5.634 min  
 Delta R.T.: 0.000 min  
 Response: 7202967  
 Conc: 122.41 ng/ml



#21 AR-1248-1

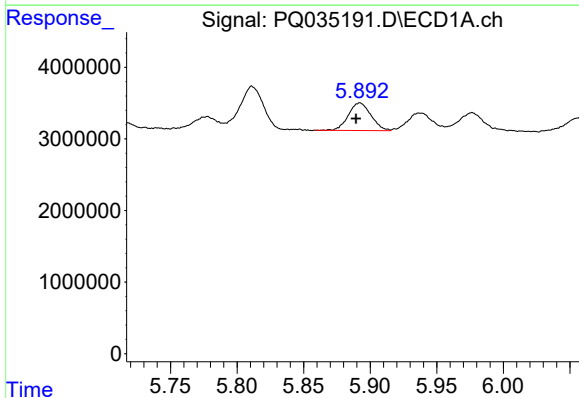
R.T.: 5.620 min  
 Delta R.T.: 0.001 min  
 Response: 3769957  
 Conc: 50.39 ng/ml

Instrument :  
 ECD\_Q  
 ClientSampleId :



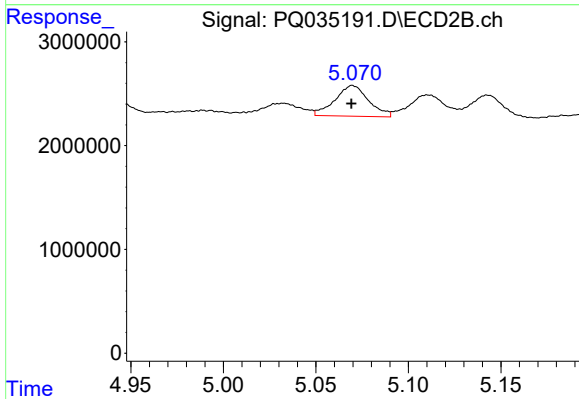
#21 AR-1248-1

R.T.: 4.835 min  
 Delta R.T.: 0.000 min  
 Response: 1545004  
 Conc: 33.48 ng/ml



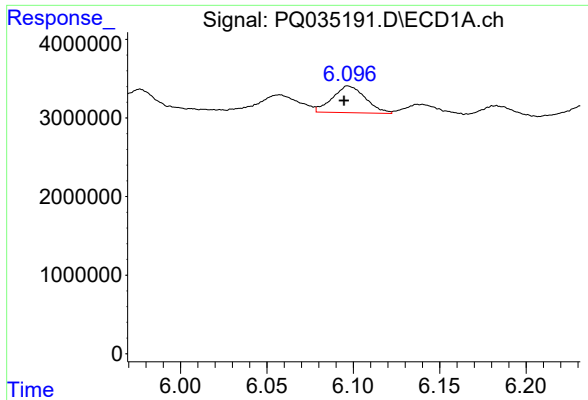
#22 AR-1248-2

R.T.: 5.892 min  
 Delta R.T.: 0.003 min  
 Response: 4565590  
 Conc: 42.57 ng/ml



#22 AR-1248-2

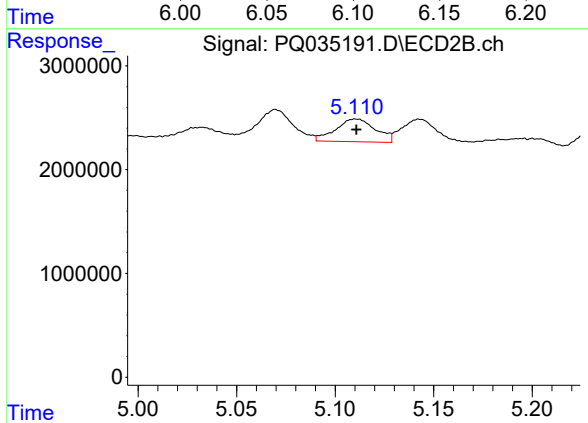
R.T.: 5.070 min  
 Delta R.T.: 0.000 min  
 Response: 3738573  
 Conc: 59.95 ng/ml



#23 AR-1248-3

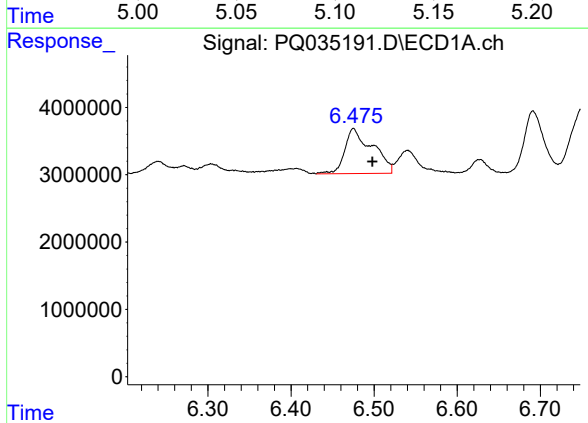
R.T.: 6.097 min  
 Delta R.T.: 0.003 min  
 Response: 4513781  
 Conc: 35.88 ng/ml

Instrument :  
 ECD\_Q  
 ClientSampleId :



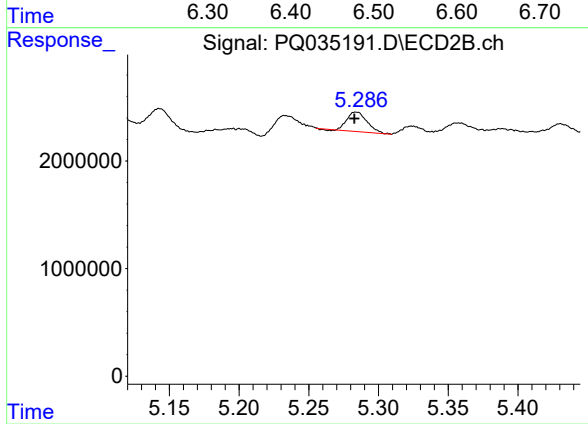
#23 AR-1248-3

R.T.: 5.111 min  
 Delta R.T.: 0.000 min  
 Response: 3088514  
 Conc: 48.34 ng/ml



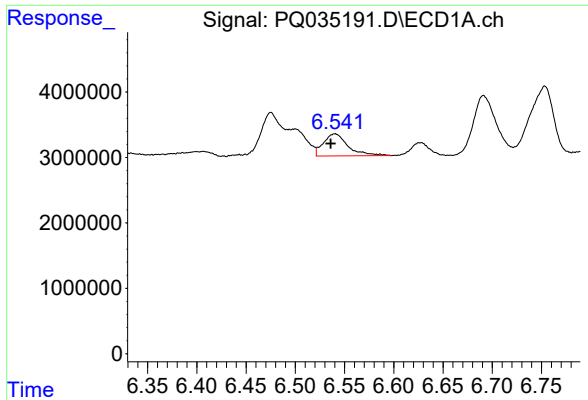
#24 AR-1248-4

R.T.: 6.475 min  
 Delta R.T.: -0.023 min  
 Response: 15485583  
 Conc: 107.75 ng/ml



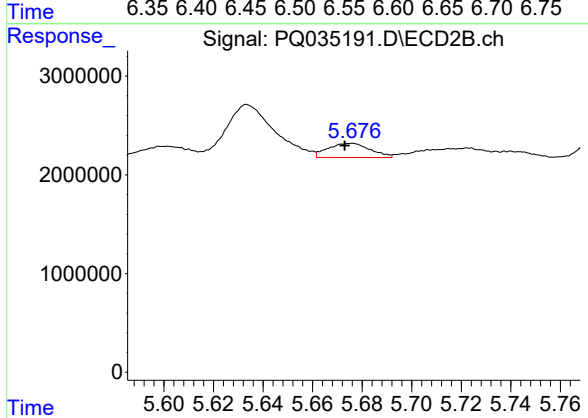
#24 AR-1248-4

R.T.: 5.284 min  
 Delta R.T.: 0.001 min  
 Response: 1819581  
 Conc: 22.57 ng/ml

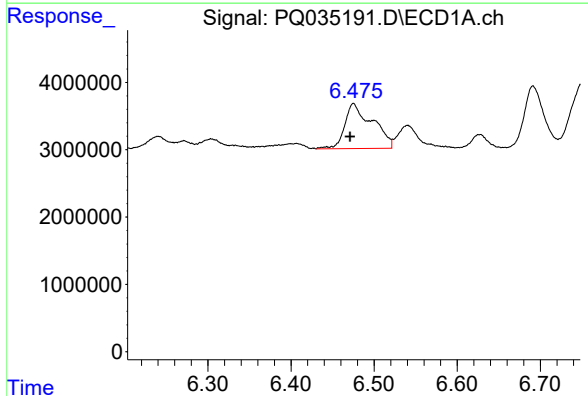


#25 AR-1248-5  
 R.T.: 6.540 min  
 Delta R.T.: 0.004 min  
 Response: 5929563  
 Conc: 43.32 ng/ml

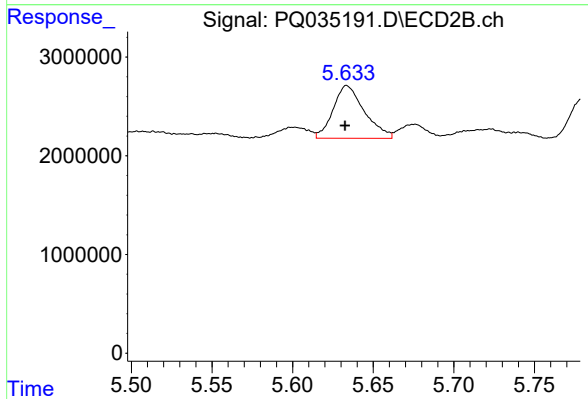
Instrument :  
 ECD\_Q  
 ClientSampled :



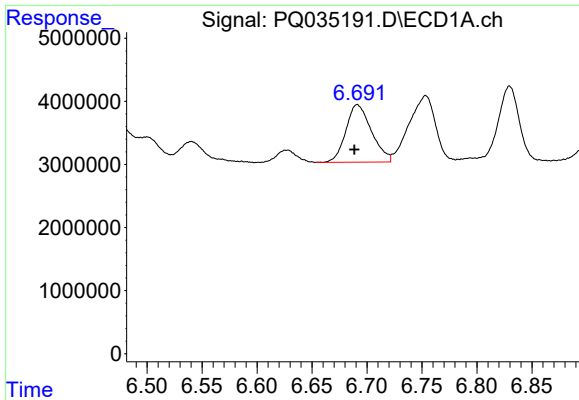
#25 AR-1248-5  
 R.T.: 5.676 min  
 Delta R.T.: 0.003 min  
 Response: 1688612  
 Conc: 20.47 ng/ml



#26 AR-1254-1  
 R.T.: 6.475 min  
 Delta R.T.: 0.004 min  
 Response: 15485583  
 Conc: 98.34 ng/ml



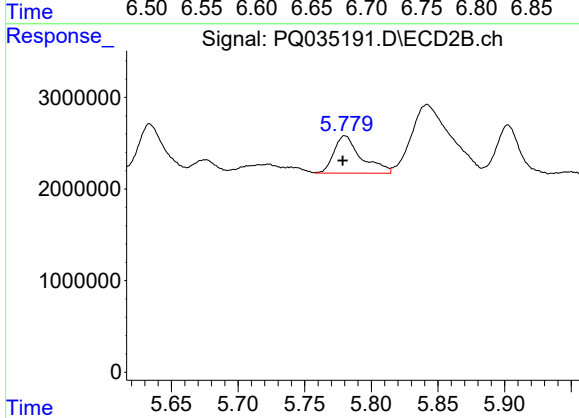
#26 AR-1254-1  
 R.T.: 5.634 min  
 Delta R.T.: 0.001 min  
 Response: 7202967  
 Conc: 51.07 ng/ml



#27 AR-1254-2

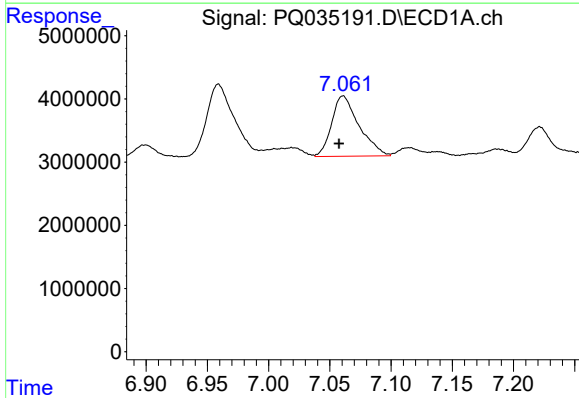
R.T.: 6.691 min  
 Delta R.T.: 0.003 min  
 Response: 14803851  
 Conc: 58.69 ng/ml

Instrument :  
 ECD\_Q  
 ClientSampled :



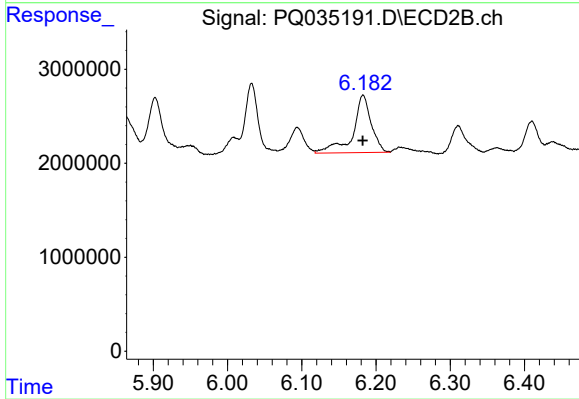
#27 AR-1254-2

R.T.: 5.780 min  
 Delta R.T.: 0.002 min  
 Response: 5820429  
 Conc: 49.16 ng/ml



#28 AR-1254-3

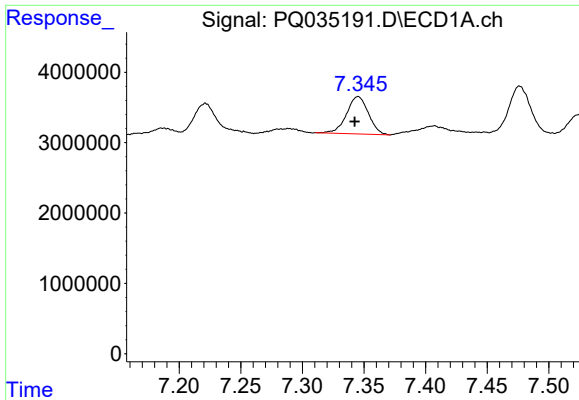
R.T.: 7.061 min  
 Delta R.T.: 0.003 min  
 Response: 14860819  
 Conc: 54.83 ng/ml



#28 AR-1254-3

R.T.: 6.183 min  
 Delta R.T.: 0.000 min  
 Response: 10453282  
 Conc: 51.07 ng/ml

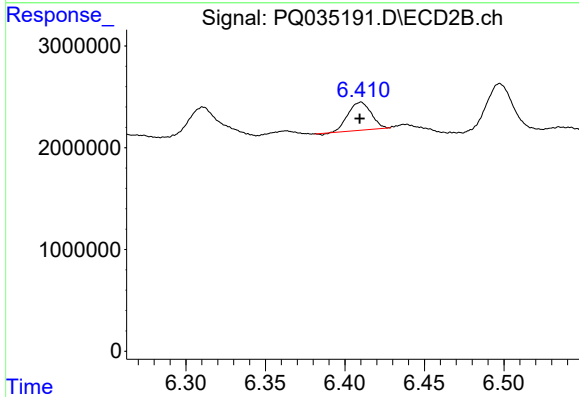




#29 AR-1254-4

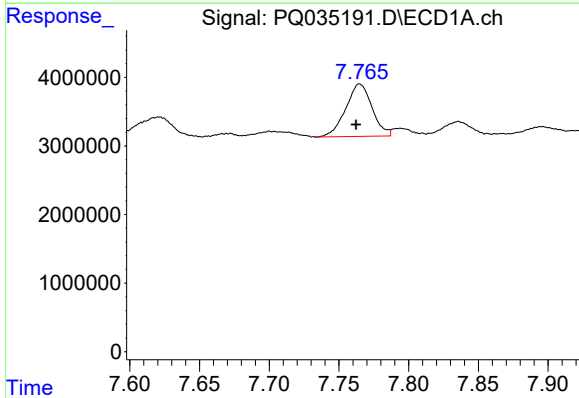
R.T.: 7.345 min  
 Delta R.T.: 0.003 min  
 Response: 6547927  
 Conc: 34.49 ng/ml

Instrument :  
 ECD\_Q  
 ClientSampleId :



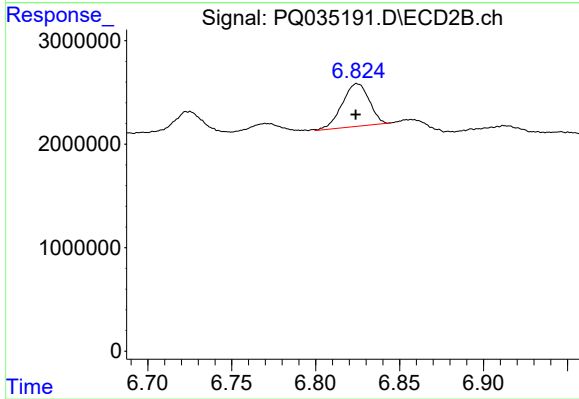
#29 AR-1254-4

R.T.: 6.410 min  
 Delta R.T.: 0.000 min  
 Response: 2771653  
 Conc: 21.66 ng/ml



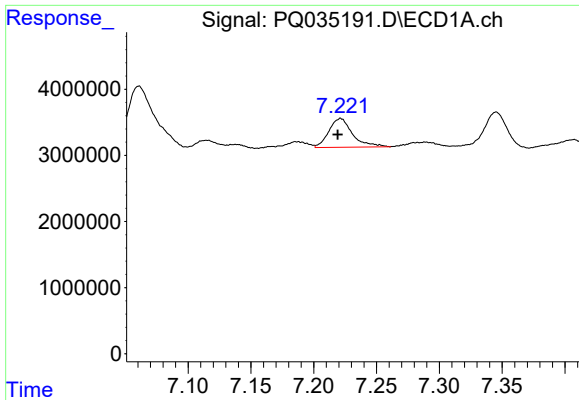
#30 AR-1254-5

R.T.: 7.765 min  
 Delta R.T.: 0.003 min  
 Response: 10037980  
 Conc: 52.21 ng/ml



#30 AR-1254-5

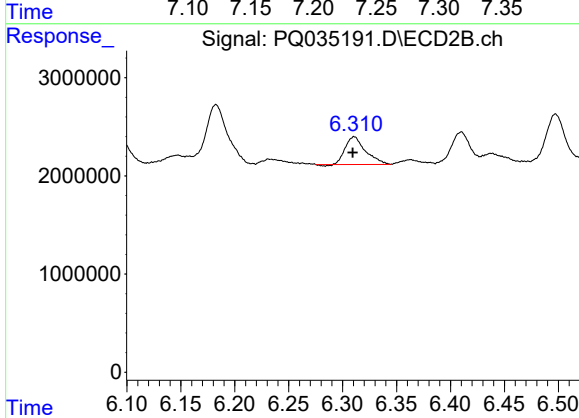
R.T.: 6.825 min  
 Delta R.T.: 0.000 min  
 Response: 4597326  
 Conc: 27.22 ng/ml



#31 AR-1260-1

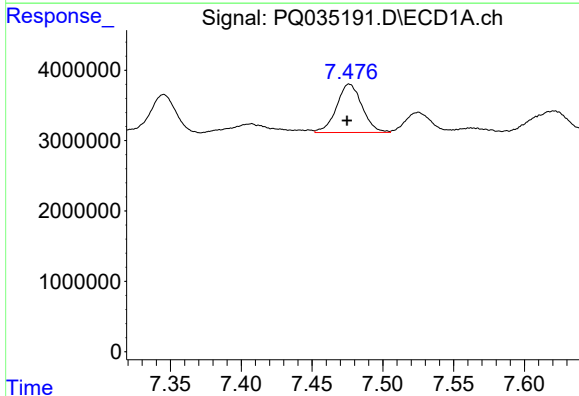
R.T.: 7.221 min  
 Delta R.T.: 0.002 min  
 Response: 5734519  
 Conc: 28.70 ng/ml

Instrument :  
 ECD\_Q  
 ClientSampleId :



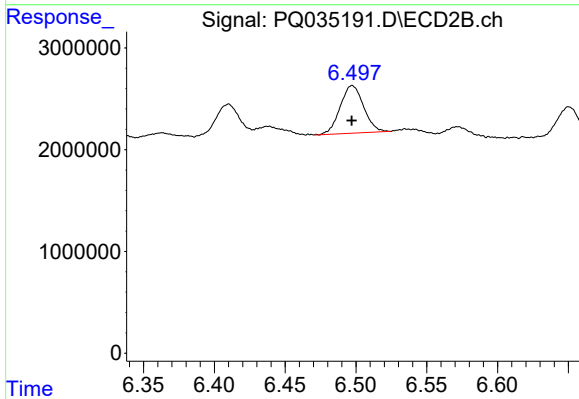
#31 AR-1260-1

R.T.: 6.311 min  
 Delta R.T.: 0.001 min  
 Response: 3678805  
 Conc: 28.40 ng/ml



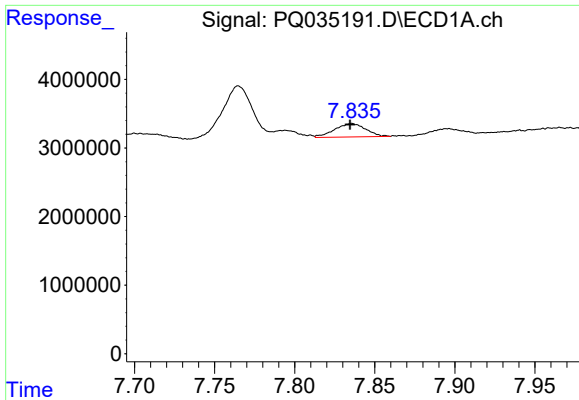
#32 AR-1260-2

R.T.: 7.476 min  
 Delta R.T.: 0.002 min  
 Response: 8614539  
 Conc: 37.60 ng/ml



#32 AR-1260-2

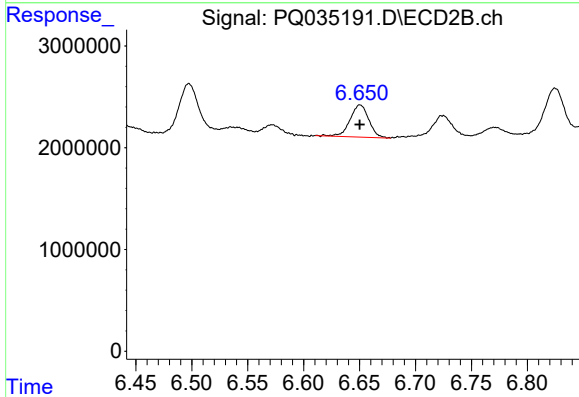
R.T.: 6.497 min  
 Delta R.T.: 0.000 min  
 Response: 5415826  
 Conc: 33.44 ng/ml



#33 AR-1260-3

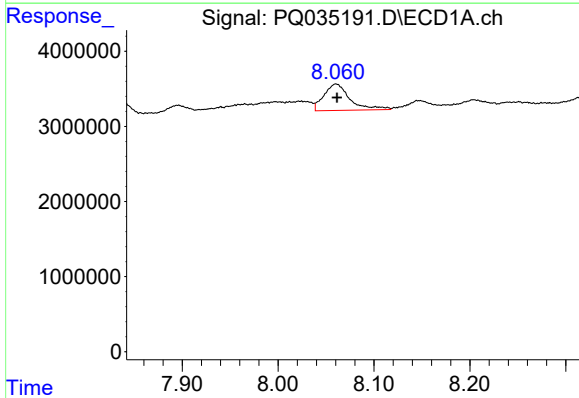
R.T.: 7.836 min  
 Delta R.T.: 0.001 min  
 Response: 2636237  
 Conc: 18.76 ng/ml

Instrument :  
 ECD\_Q  
 ClientSampleId :



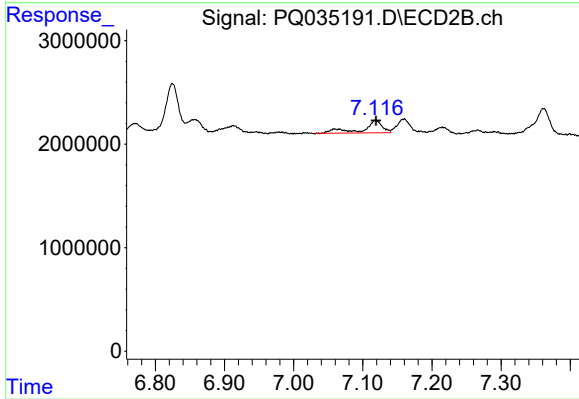
#33 AR-1260-3

R.T.: 6.651 min  
 Delta R.T.: 0.000 min  
 Response: 3708026  
 Conc: 24.57 ng/ml



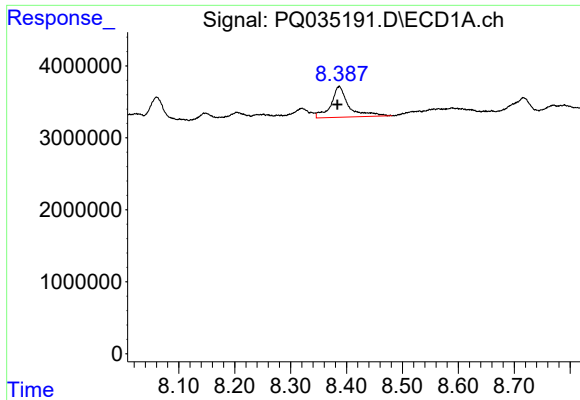
#34 AR-1260-4

R.T.: 8.060 min  
 Delta R.T.: -0.001 min  
 Response: 6653506  
 Conc: 36.98 ng/ml



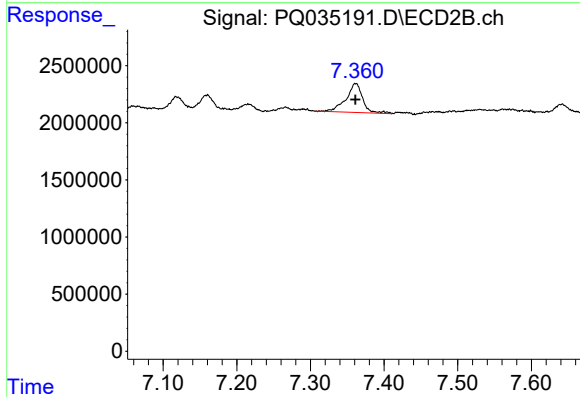
#34 AR-1260-4

R.T.: 7.118 min  
 Delta R.T.: -0.001 min  
 Response: 2357829  
 Conc: 21.56 ng/ml

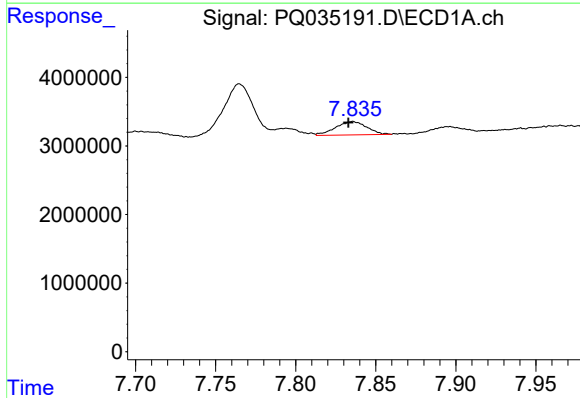


#35 AR-1260-5  
 R.T.: 8.387 min  
 Delta R.T.: 0.004 min  
 Response: 9454845  
 Conc: 26.60 ng/ml

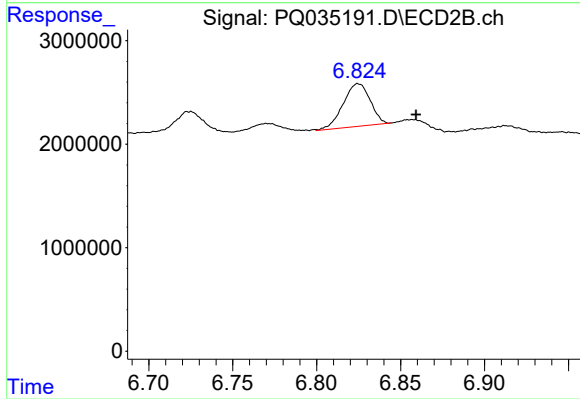
Instrument :  
 ECD\_Q  
 ClientSampleId :



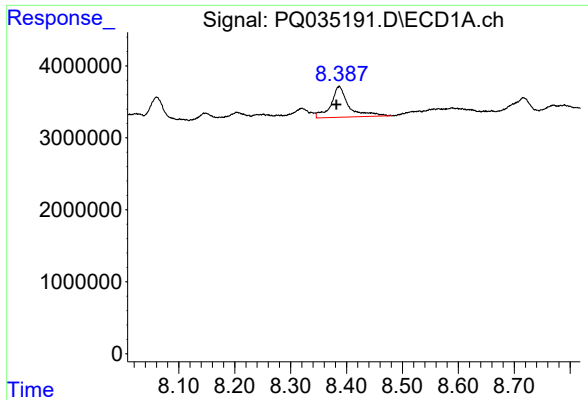
#35 AR-1260-5  
 R.T.: 7.361 min  
 Delta R.T.: 0.000 min  
 Response: 3992044  
 Conc: 14.71 ng/ml



#36 AR-1262-1  
 R.T.: 7.836 min  
 Delta R.T.: 0.003 min  
 Response: 2636237  
 Conc: 12.23 ng/ml



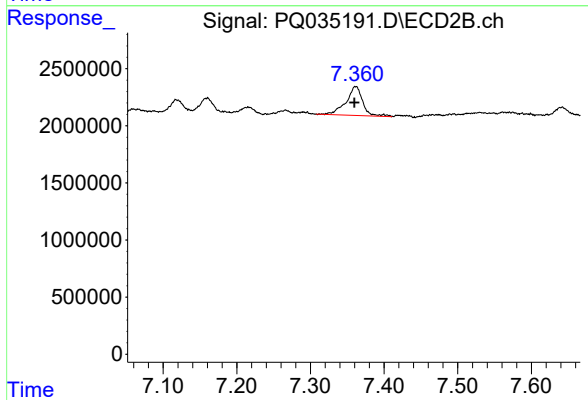
#36 AR-1262-1  
 R.T.: 6.825 min  
 Delta R.T.: -0.034 min  
 Response: 4597326  
 Conc: 28.57 ng/ml



#37 AR-1262-2

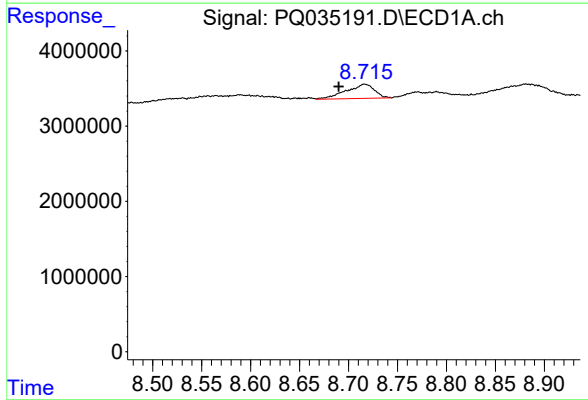
R.T.: 8.387 min  
 Delta R.T.: 0.005 min  
 Response: 9454845  
 Conc: 25.79 ng/ml

Instrument :  
 ECD\_Q  
 ClientSampleId :



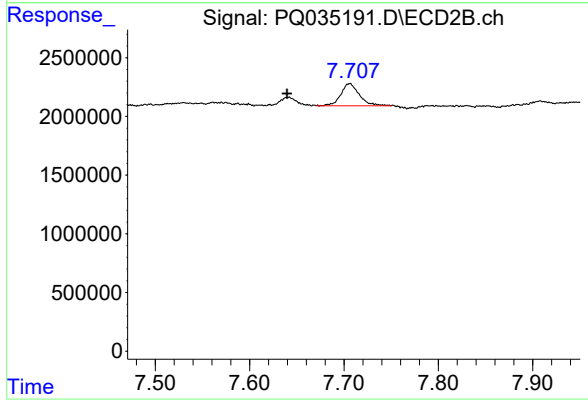
#37 AR-1262-2

R.T.: 7.361 min  
 Delta R.T.: 0.002 min  
 Response: 3992044  
 Conc: 14.28 ng/ml



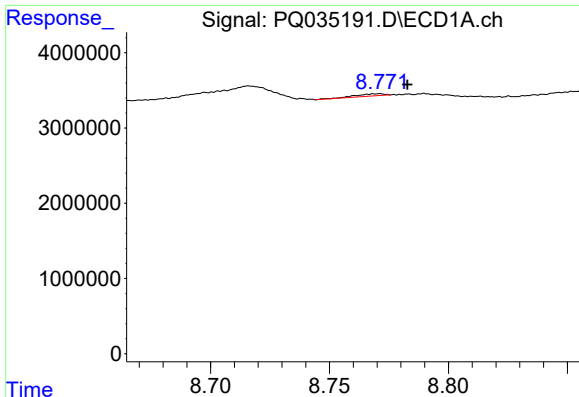
#38 AR-1262-3

R.T.: 8.716 min  
 Delta R.T.: 0.026 min  
 Response: 3789578  
 Conc: 16.54 ng/ml



#38 AR-1262-3

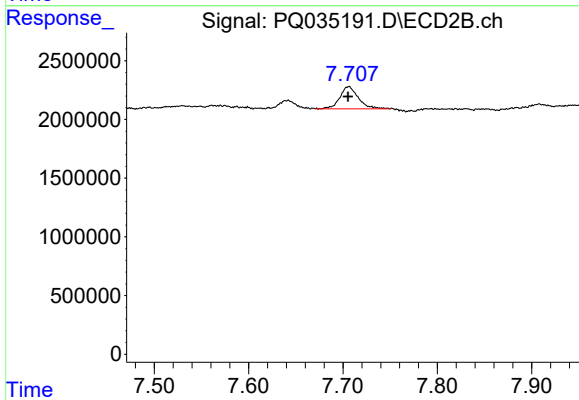
R.T.: 7.706 min  
 Delta R.T.: 0.066 min  
 Response: 2574066  
 Conc: 25.77 ng/ml



#39 AR-1262-4

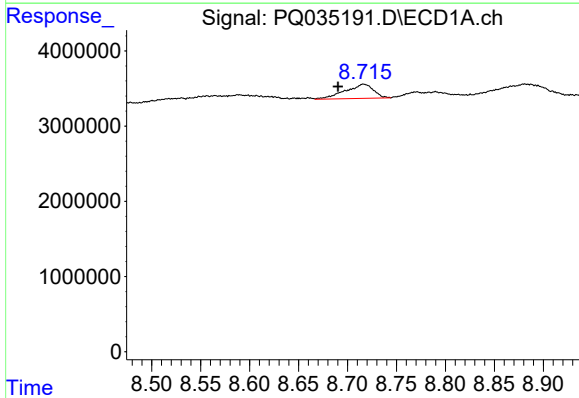
R.T.: 8.771 min  
 Delta R.T.: -0.012 min  
 Response: 237179  
 Conc: 1.39 ng/ml

Instrument :  
 ECD\_Q  
 ClientSampleId :



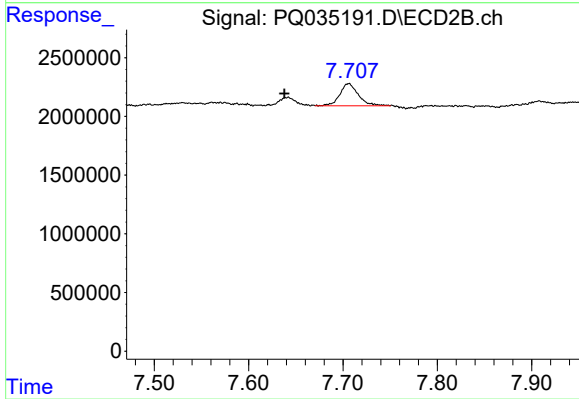
#39 AR-1262-4

R.T.: 7.706 min  
 Delta R.T.: 0.000 min  
 Response: 2574066  
 Conc: 13.54 ng/ml



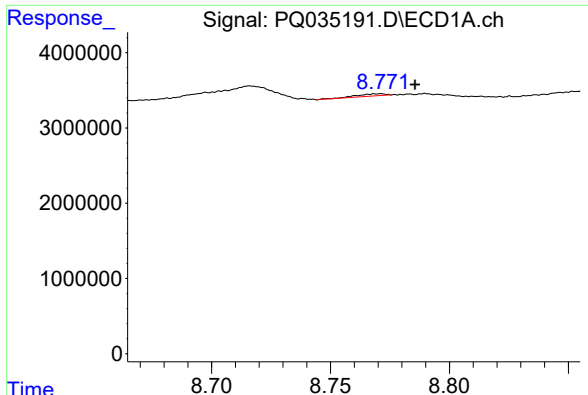
#41 AR-1268-1

R.T.: 8.716 min  
 Delta R.T.: 0.026 min  
 Response: 3789578  
 Conc: 6.83 ng/ml



#41 AR-1268-1

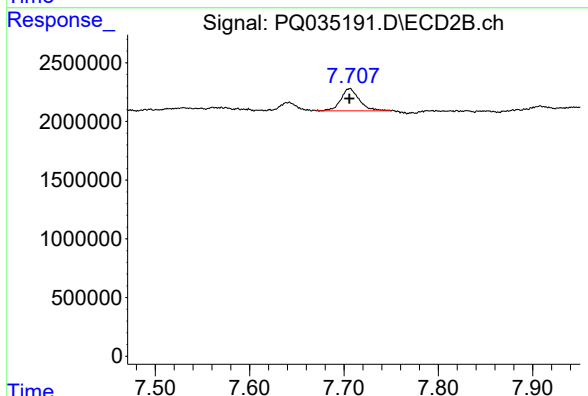
R.T.: 7.706 min  
 Delta R.T.: 0.068 min  
 Response: 2574066  
 Conc: 6.42 ng/ml



#42 AR-1268-2

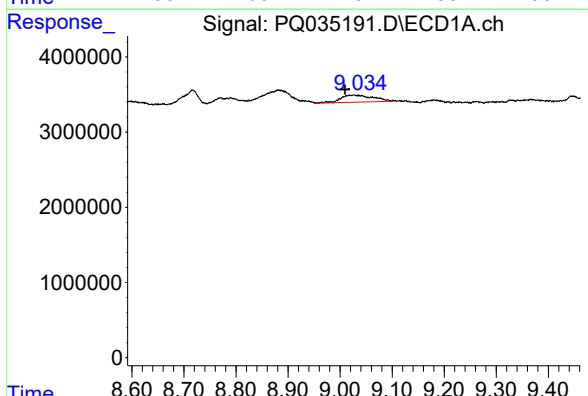
R.T.: 8.771 min  
 Delta R.T.: -0.015 min  
 Response: 237179  
 Conc: 0.47 ng/ml

Instrument :  
 ECD\_Q  
 ClientSampleId :



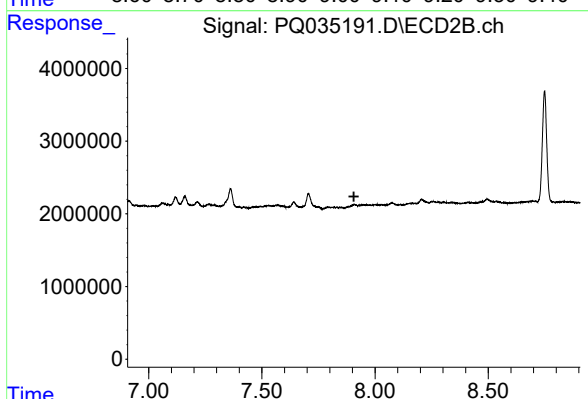
#42 AR-1268-2

R.T.: 7.706 min  
 Delta R.T.: 0.000 min  
 Response: 2574066  
 Conc: 7.17 ng/ml



#43 AR-1268-3

R.T.: 9.026 min  
 Delta R.T.: 0.017 min  
 Response: 4059249  
 Conc: 9.49 ng/ml



#43 AR-1268-3

R.T.: 0.000 min  
 Exp R.T. : 7.907 min  
 Response: 0  
 Conc: N.D.