

Data Path : Z:\pestpcbsrv\HPCHEM1\ECD_Q\Data\PQ120718\
 Data File : PQ035292.D
 Signal(s) : Signal #1: ECD1A.ch Signal #2: ECD2B.ch
 Acq On : 07 Dec 2018 10:15
 Operator : SM\SJ
 Sample : AR1660CCC500
 Misc :
 ALS Vial : 3 Sample Multiplier: 1

Instrument :
 ECD_Q
 ClientSampleId :
 AR1660CCC500

Integration File signal 1: autoint1.e
 Integration File signal 2: autoint2.e
 Quant Time: Dec 07 13:46:49 2018
 Quant Method : Z:\pestpcbsrv\HPCHEM1\ECD_Q\Method\PQ120518.M
 Quant Title : GC EXTRACTABLES
 QLast Update : Fri Dec 07 10:45:05 2018
 Response via : Initial Calibration
 Integrator: ChemStation

Volume Inj. : 2 µl
 Signal #1 Phase : ZB-MR2 Signal #2 Phase: ZB-MR2
 Signal #1 Info : 30Mx0.32mmx 0.50µ Signal #2 Info : 30M x 0.32mm x 0.25µm

| Compound | RT#1 | RT#2 | Resp#1 | Resp#2 | ng/ml | ng/ml |
|-----------------------------|--------|-------|----------|----------|---------|---------|
| ----- | | | | | | |
| System Monitoring Compounds | | | | | | |
| 1) SA Tetrachlo... | 4.450 | 3.752 | 200.5E6 | 117.6E6 | 50.152 | 53.513 |
| 2) SA Decachlor... | 10.180 | 8.745 | 166.1E6 | 105.3E6 | 43.793 | 45.436 |
| Target Compounds | | | | | | |
| 3) L1 AR-1016-1 | 5.619 | 4.835 | 63369054 | 39214839 | 450.108 | 469.474 |
| 4) L1 AR-1016-2 | 5.640 | 4.853 | 95612534 | 58368325 | 447.563 | 462.890 |
| 5) L1 AR-1016-3 | 5.702 | 5.030 | 56034921 | 29856129 | 434.466 | 454.808 |
| 6) L1 AR-1016-4 | 5.802 | 5.069 | 46169714 | 23771656 | 436.867 | 456.976 |
| 7) L1 AR-1016-5 | 6.095 | 5.283 | 46383945 | 32124881 | 441.359 | 466.147 |
| 31) L7 AR-1260-1 | 7.218 | 6.308 | 96400027 | 67956365 | 423.912 | 450.279 |
| 32) L7 AR-1260-2 | 7.475 | 6.496 | 117.6E6 | 84169468 | 428.998 | 443.600 |
| 33) L7 AR-1260-3 | 7.833 | 6.649 | 70579857 | 79452908 | 426.892 | 453.652 |
| 34) L7 AR-1260-4 | 8.062 | 7.118 | 89152562 | 54369885 | 423.023 | 455.511 |
| 35) L7 AR-1260-5 | 8.383 | 7.359 | 172.0E6 | 138.4E6 | 423.421 | 459.842 |

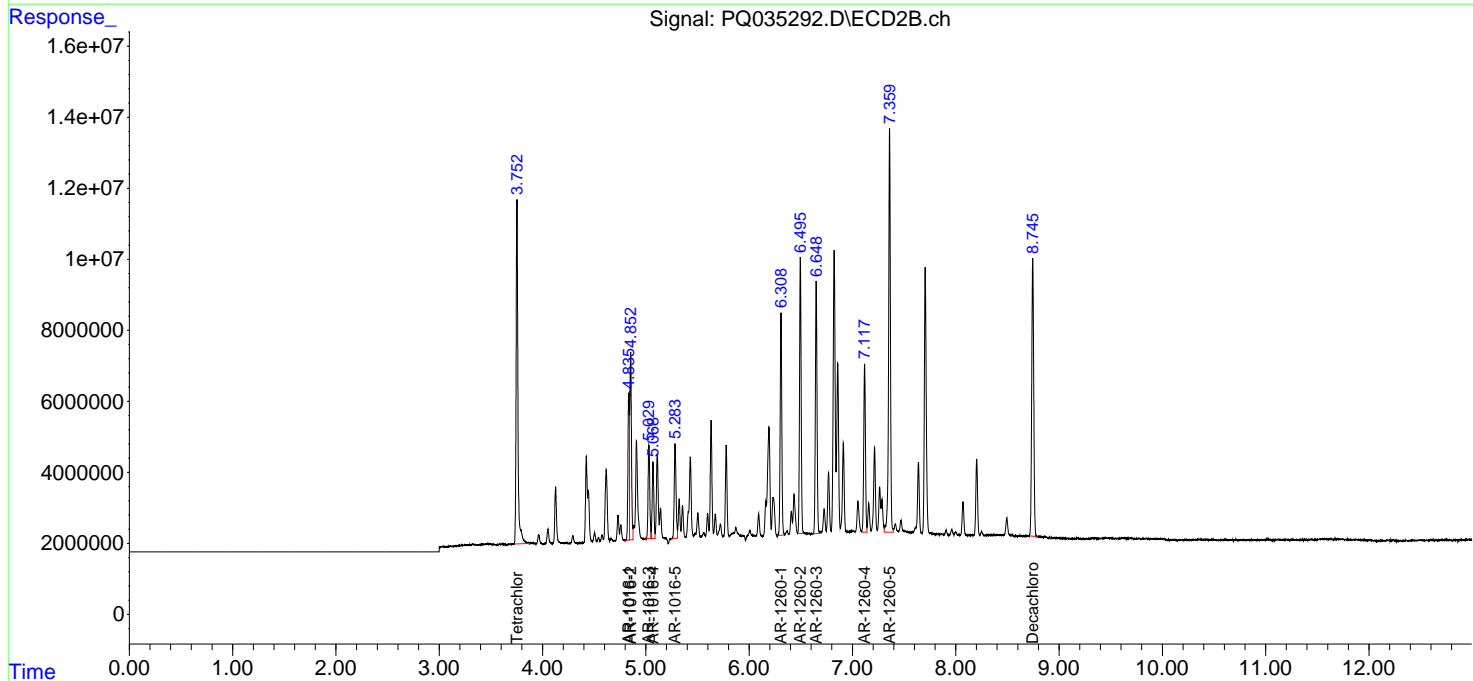
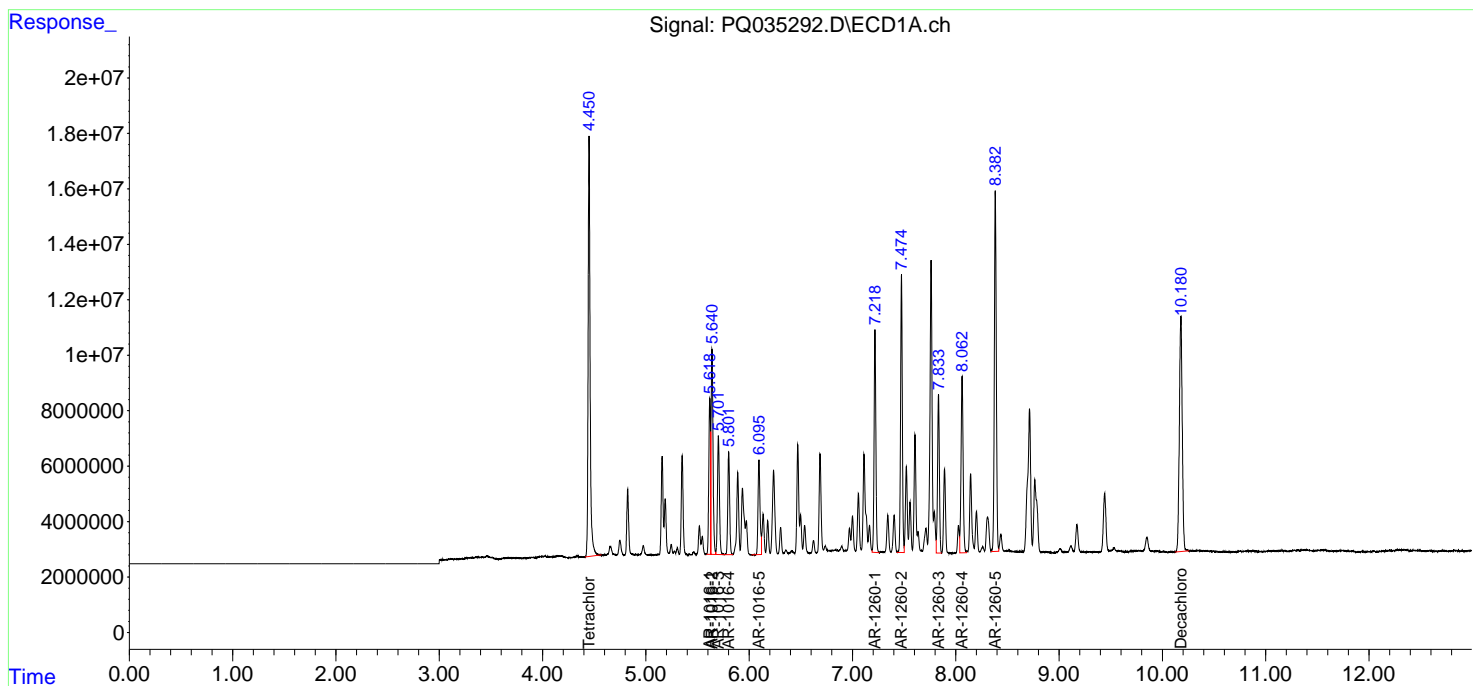
(f)=RT Delta > 1/2 Window (#)=Amounts differ by > 25% (m)=manual int.

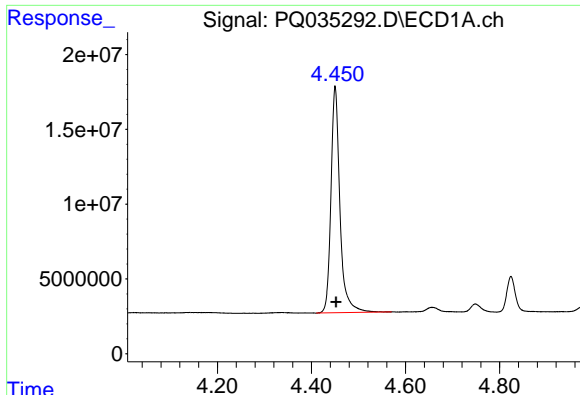
Data Path : Z:\pestpcbsrv\HPCHEM1\ECD_Q\Data\PQ120718\
 Data File : PQ035292.D
 Signal(s) : Signal #1: ECD1A.ch Signal #2: ECD2B.ch
 Acq On : 07 Dec 2018 10:15
 Operator : SM\SJ
 Sample : AR1660CCC500
 Misc :
 ALS Vial : 3 Sample Multiplier: 1

Instrument :
 ECD_Q
 ClientSampleID :
 AR1660CCC500

Integration File signal 1: autoint1.e
 Integration File signal 2: autoint2.e
 Quant Time: Dec 07 13:46:49 2018
 Quant Method : Z:\pestpcbsrv\HPCHEM1\ECD_Q\Method\PQ120518.M
 Quant Title : GC EXTRACTABLES
 QLast Update : Fri Dec 07 10:45:05 2018
 Response via : Initial Calibration
 Integrator: ChemStation

Volume Inj. : 2 µl
 Signal #1 Phase : ZB-MR1 Signal #2 Phase: ZB-MR2
 Signal #1 Info : 30Mx0.32mmx 0.50µm Signal #2 Info : 30M x 0.32mm x 0.25µm

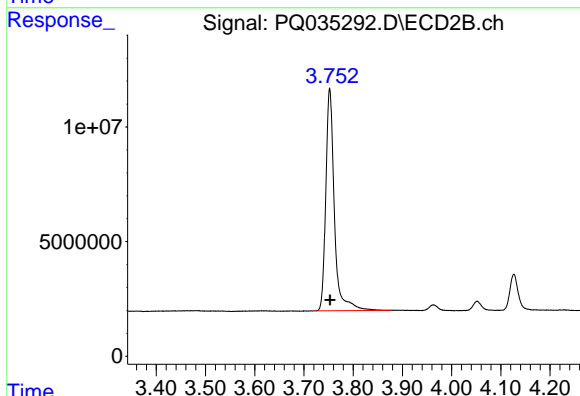




#1 Tetrachloro-m-xylene

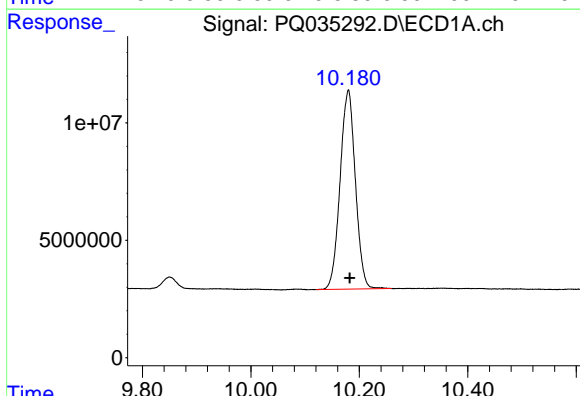
R.T.: 4.450 min
Delta R.T.: -0.002 min
Response: 200496598
Conc: 50.15 ng/ml

Instrument :
ECD_Q
ClientSampleId :
AR1660CCC500



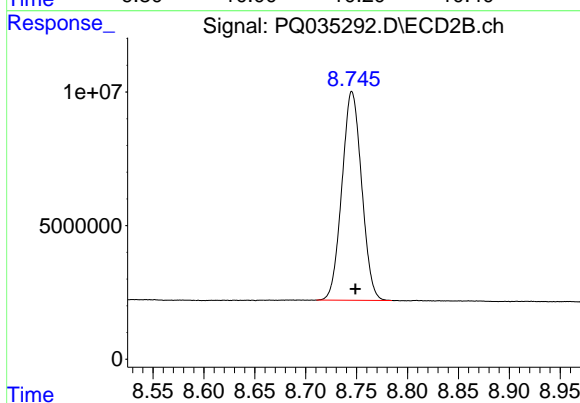
#1 Tetrachloro-m-xylene

R.T.: 3.752 min
Delta R.T.: 0.000 min
Response: 117644858
Conc: 53.51 ng/ml



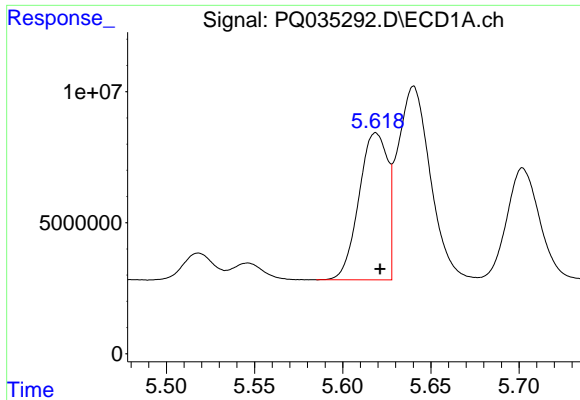
#2 Decachlorobiphenyl

R.T.: 10.180 min
Delta R.T.: -0.002 min
Response: 166107618
Conc: 43.79 ng/ml



#2 Decachlorobiphenyl

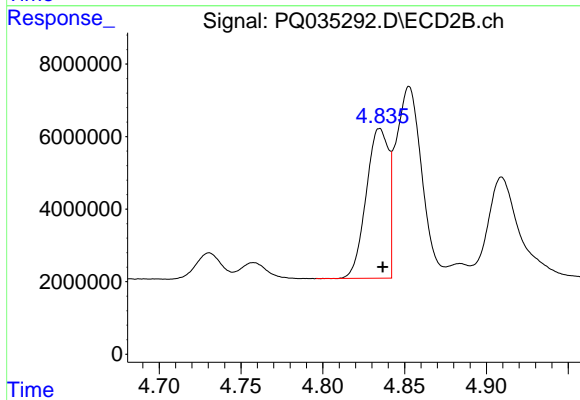
R.T.: 8.745 min
Delta R.T.: -0.003 min
Response: 105340129
Conc: 45.44 ng/ml



#3 AR-1016-1

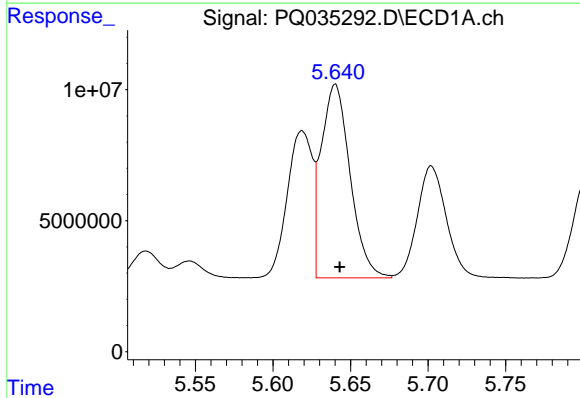
R.T.: 5.619 min
 Delta R.T.: -0.002 min
 Response: 63369054
 Conc: 450.11 ng/ml

Instrument :
 ECD_Q
 ClientSampleId :
 AR1660CCC500



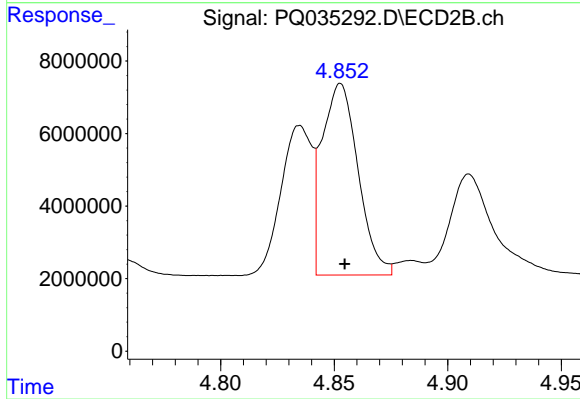
#3 AR-1016-1

R.T.: 4.835 min
 Delta R.T.: -0.002 min
 Response: 39214839
 Conc: 469.47 ng/ml



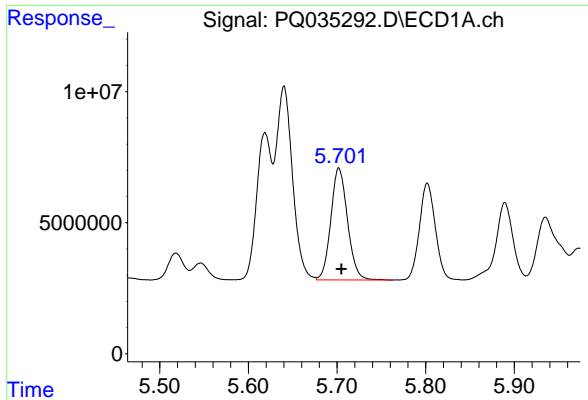
#4 AR-1016-2

R.T.: 5.640 min
 Delta R.T.: -0.003 min
 Response: 95612534
 Conc: 447.56 ng/ml



#4 AR-1016-2

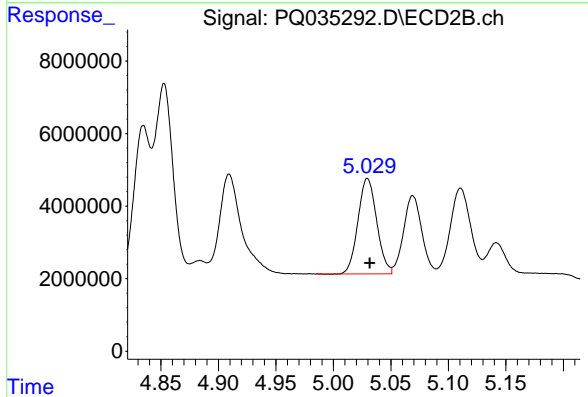
R.T.: 4.853 min
 Delta R.T.: -0.002 min
 Response: 58368325
 Conc: 462.89 ng/ml



#5 AR-1016-3

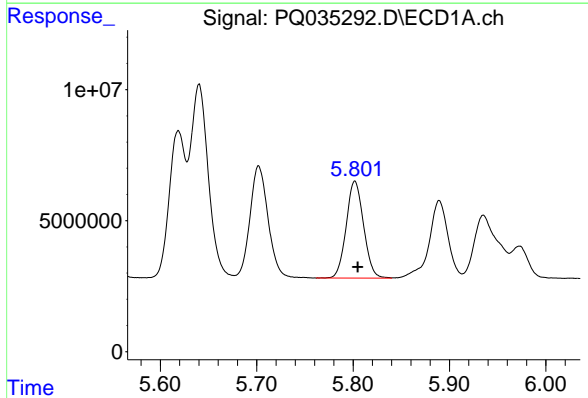
R.T.: 5.702 min
 Delta R.T.: -0.003 min
 Response: 56034921
 Conc: 434.47 ng/ml

Instrument :
 ECD_Q
 ClientSampleId :
 AR1660CCC500



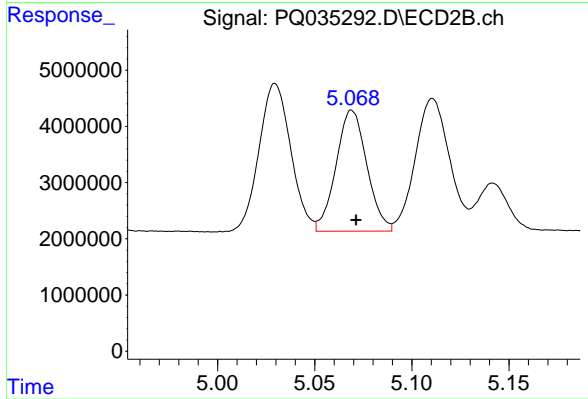
#5 AR-1016-3

R.T.: 5.030 min
 Delta R.T.: -0.002 min
 Response: 29856129
 Conc: 454.81 ng/ml



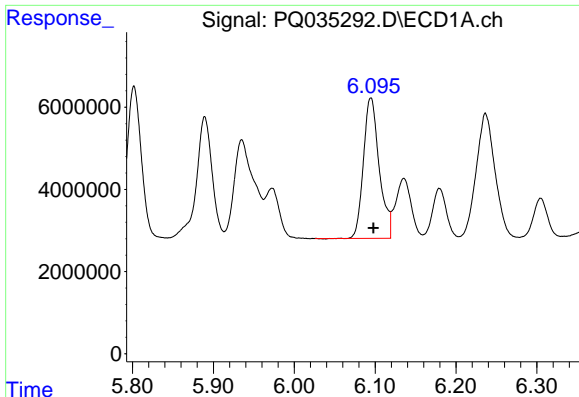
#6 AR-1016-4

R.T.: 5.802 min
 Delta R.T.: -0.003 min
 Response: 46169714
 Conc: 436.87 ng/ml



#6 AR-1016-4

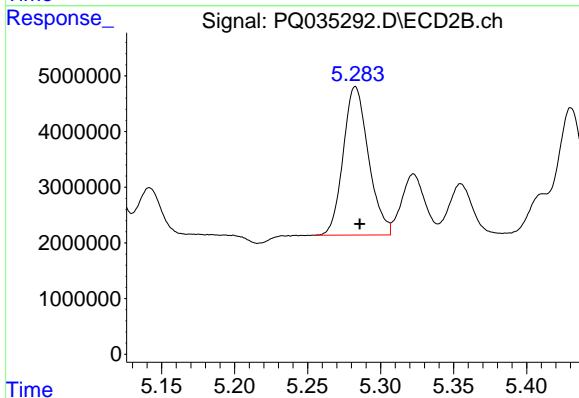
R.T.: 5.069 min
 Delta R.T.: -0.002 min
 Response: 23771656
 Conc: 456.98 ng/ml



#7 AR-1016-5

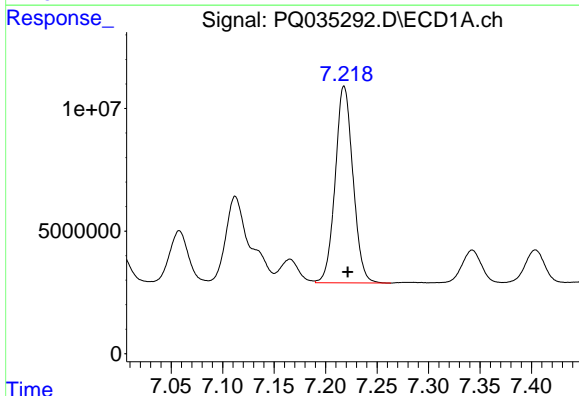
R.T.: 6.095 min
Delta R.T.: -0.003 min
Response: 46383945
Conc: 441.36 ng/ml

Instrument :
ECD_Q
ClientSampleId :
AR1660CCC500



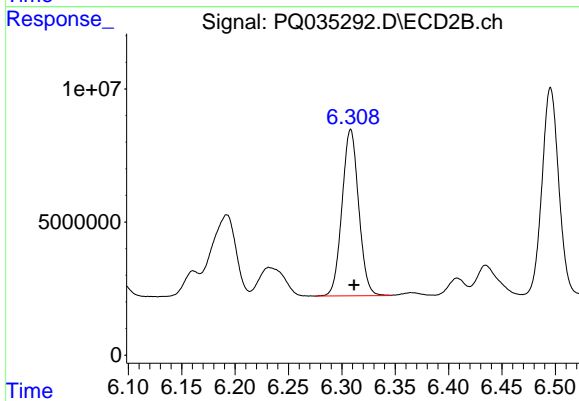
#7 AR-1016-5

R.T.: 5.283 min
Delta R.T.: -0.003 min
Response: 32124881
Conc: 466.15 ng/ml



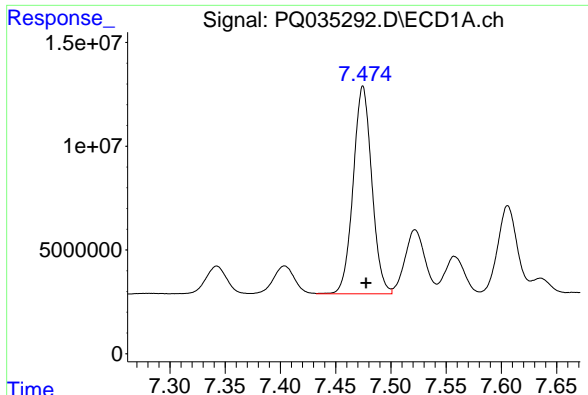
#31 AR-1260-1

R.T.: 7.218 min
Delta R.T.: -0.003 min
Response: 96400027
Conc: 423.91 ng/ml



#31 AR-1260-1

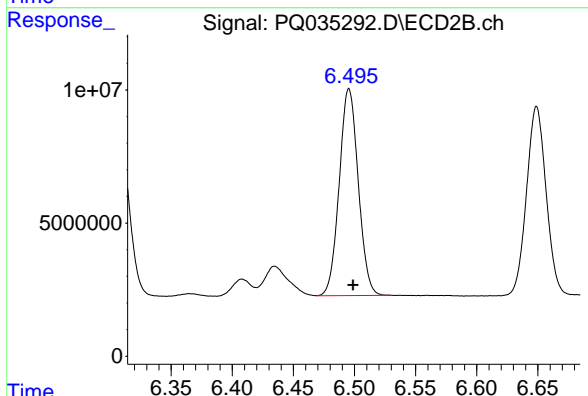
R.T.: 6.308 min
Delta R.T.: -0.003 min
Response: 67956365
Conc: 450.28 ng/ml



#32 AR-1260-2

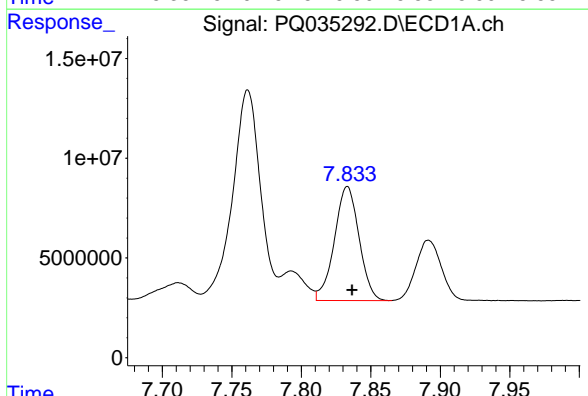
R.T.: 7.475 min
 Delta R.T.: -0.003 min
 Response: 117594431
 Conc: 429.00 ng/ml

Instrument :
 ECD_Q
 ClientSampleId :
 AR1660CCC500



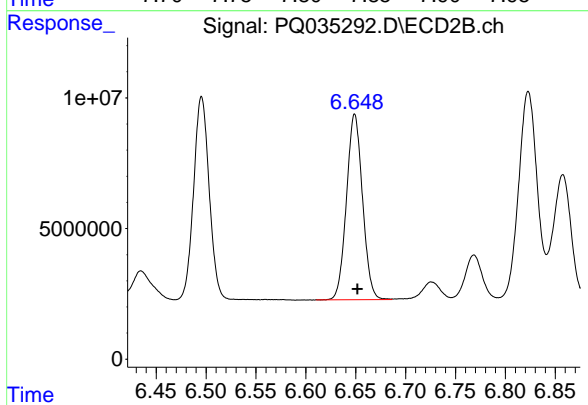
#32 AR-1260-2

R.T.: 6.496 min
 Delta R.T.: -0.003 min
 Response: 84169468
 Conc: 443.60 ng/ml



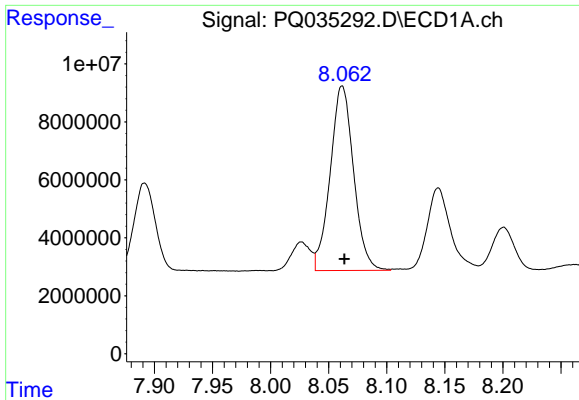
#33 AR-1260-3

R.T.: 7.833 min
 Delta R.T.: -0.003 min
 Response: 70579857
 Conc: 426.89 ng/ml



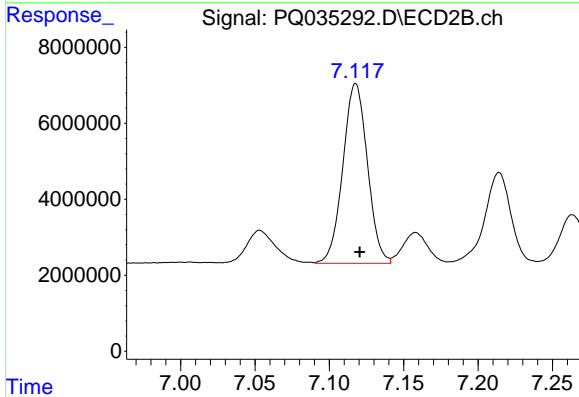
#33 AR-1260-3

R.T.: 6.649 min
 Delta R.T.: -0.003 min
 Response: 79452908
 Conc: 453.65 ng/ml

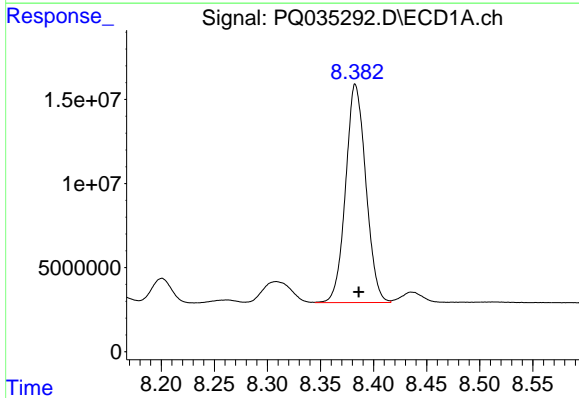


#34 AR-1260-4
 R.T.: 8.062 min
 Delta R.T.: -0.002 min
 Response: 89152562
 Conc: 423.02 ng/ml

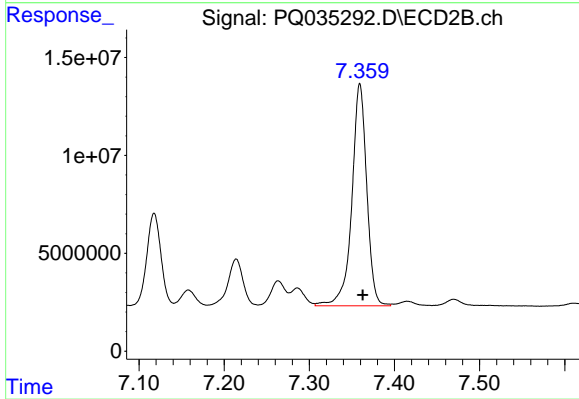
Instrument :
 ECD_Q
ClientSampleId :
 AR1660CCC500



#34 AR-1260-4
 R.T.: 7.118 min
 Delta R.T.: -0.003 min
 Response: 54369885
 Conc: 455.51 ng/ml



#35 AR-1260-5
 R.T.: 8.383 min
 Delta R.T.: -0.003 min
 Response: 172045026
 Conc: 423.42 ng/ml



#35 AR-1260-5
 R.T.: 7.359 min
 Delta R.T.: -0.003 min
 Response: 138371838
 Conc: 459.84 ng/ml