

Data Path : Z:\pestpcbsrv\HPCHEM1\ECD\_Q\Data\PQ121119\  
 Data File : PQ045724.D  
 Signal(s) : Signal #1: ECD1A.ch Signal #2: ECD2B.ch  
 Acq On : 11 Dec 2019 07:59  
 Operator : SM\AJ  
 Sample : AR1660ICC500  
 Misc :  
 ALS Vial : 5 Sample Multiplier: 1

Instrument :  
 ECD\_Q  
 ClientSampleId :  
 AR1660ICC500

Integration File signal 1: autoint1.e  
 Integration File signal 2: autoint2.e  
 Quant Time: Dec 11 08:26:16 2019  
 Quant Method : Z:\pestpcbsrv\HPCHEM1\ECD\_Q\Method\PQ121119.M  
 Quant Title : GC EXTRACTABLES  
 QLast Update : Wed Dec 11 08:25:55 2019  
 Response via : Initial Calibration  
 Integrator: ChemStation

Volume Inj. : 2 µl  
 Signal #1 Phase : ZB-MR1 Signal #2 Phase: ZB-MR2  
 Signal #1 Info : 30Mx0.32mmx 0.50µ Signal #2 Info : 30M x 0.32mm x 0.25µm

Compound	RT#1	RT#2	Resp#1	Resp#2	ng/ml	ng/ml
-----						
System Monitoring Compounds						
1) SA Tetrachlo...	5.243	4.370	83805798	93419588	50.000	50.000
2) SA Decachlor...	11.408	9.814	391.3E6	298.3E6	50.000	50.000
Target Compounds						
3) L1 AR-1016-1	6.556	5.651	39936782	38795071	500.000	500.000
4) L1 AR-1016-2	6.580	5.672	62557581	61125628	500.000	500.000
5) L1 AR-1016-3	6.648	5.869	38019427	30704233	500.000	500.000
6) L1 AR-1016-4	6.754	5.916	30894837	28504517	500.000	500.000
7) L1 AR-1016-5	7.069	6.151	35392400	36593036	500.000	500.000
31) L7 AR-1260-1	8.247	7.257	90094223	84808206	500.000	500.000
32) L7 AR-1260-2	8.511	7.451	117.3E6	108.4E6	500.000	500.000
33) L7 AR-1260-3	8.879	7.613	102.3E6	102.3E6	500.000	500.000
34) L7 AR-1260-4	9.119	8.101	113.2E6	98801889	500.000	500.000
35) L7 AR-1260-5	9.461	8.345	268.5E6	260.0E6	500.000	500.000
-----						

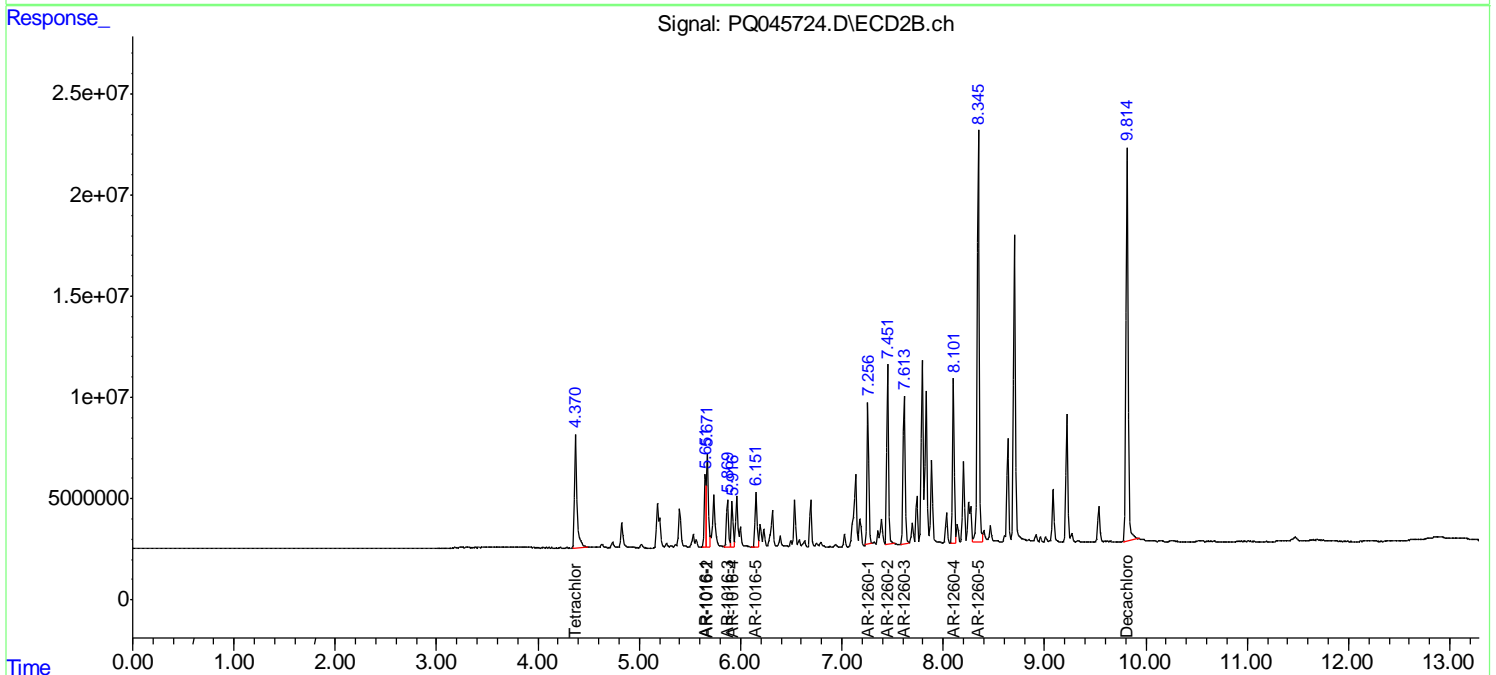
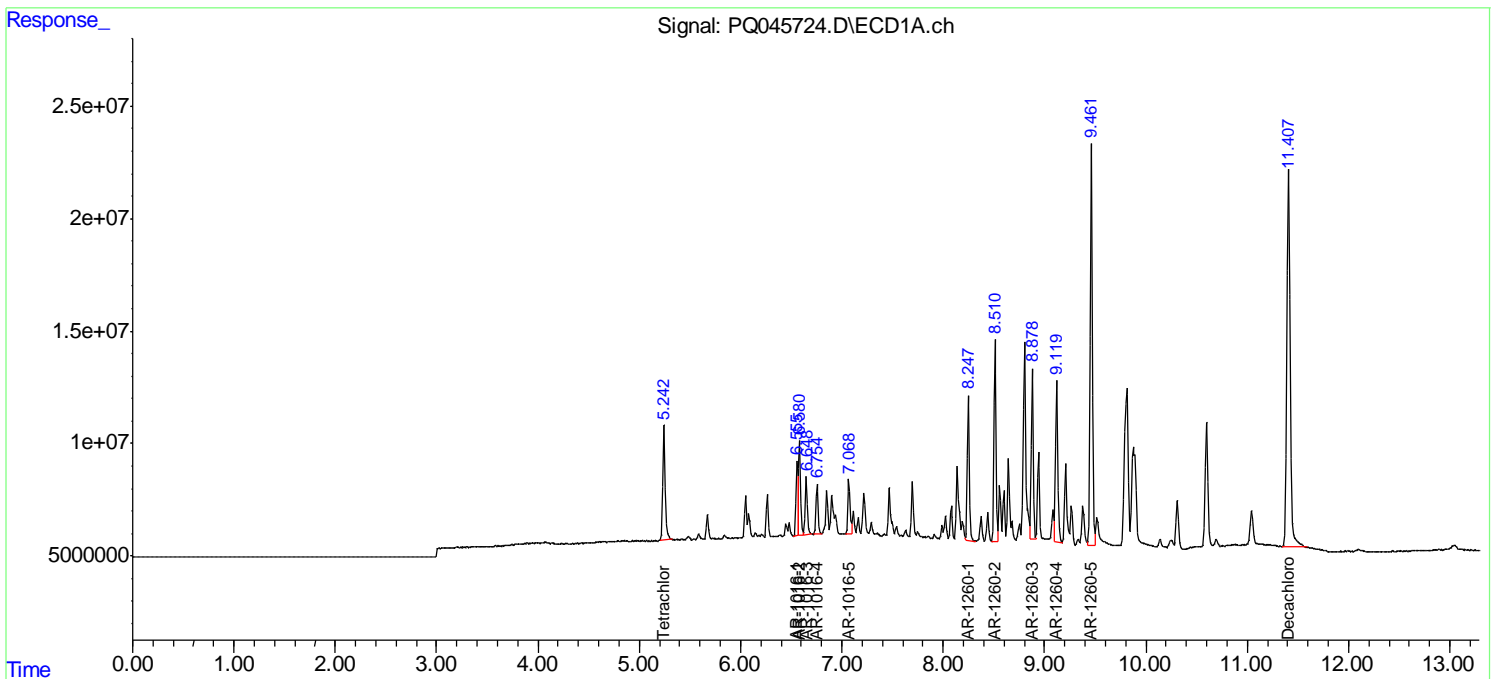
(f)=RT Delta > 1/2 Window (#)=Amounts differ by > 25% (m)=manual int.

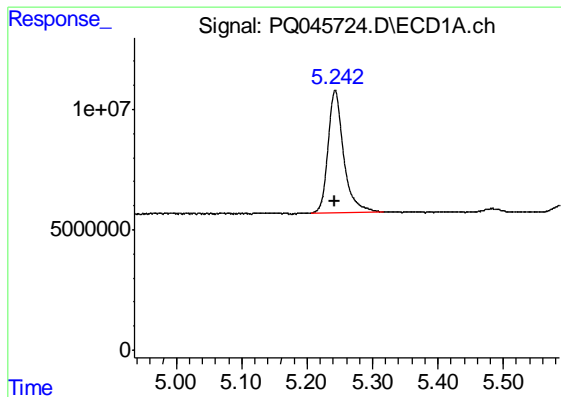
Data Path : Z:\pestpcbsrv\HPCHEM1\ECD\_Q\Data\PQ121119\  
 Data File : PQ045724.D  
 Signal(s) : Signal #1: ECD1A.ch Signal #2: ECD2B.ch  
 Acq On : 11 Dec 2019 07:59  
 Operator : SM\AJ  
 Sample : AR1660ICC500  
 Misc :  
 ALS Vial : 5 Sample Multiplier: 1

Instrument :  
 ECD\_Q  
 ClientSampled :  
 AR1660ICC500

Integration File signal 1: autoint1.e  
 Integration File signal 2: autoint2.e  
 Quant Time: Dec 11 08:26:16 2019  
 Quant Method : Z:\pestpcbsrv\HPCHEM1\ECD\_Q\Method\PQ121119.M  
 Quant Title : GC EXTRACTABLES  
 QLast Update : Wed Dec 11 08:25:55 2019  
 Response via : Initial Calibration  
 Integrator: ChemStation

Volume Inj. : 2 µl  
 Signal #1 Phase : ZB-MR1 Signal #2 Phase: ZB-MR2  
 Signal #1 Info : 30Mx0.32mmx 0.50µ Signal #2 Info : 30M x 0.32mm x 0.25µm

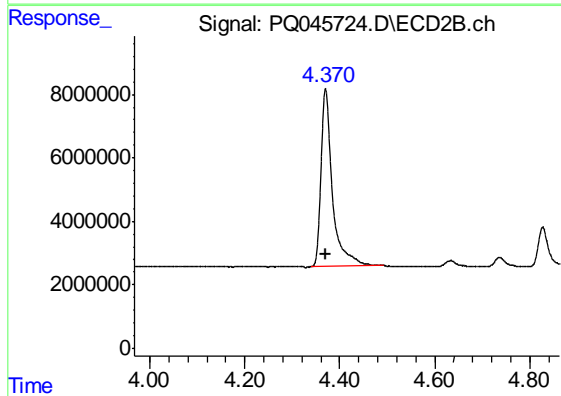




#1 Tetrachloro-m-xylene

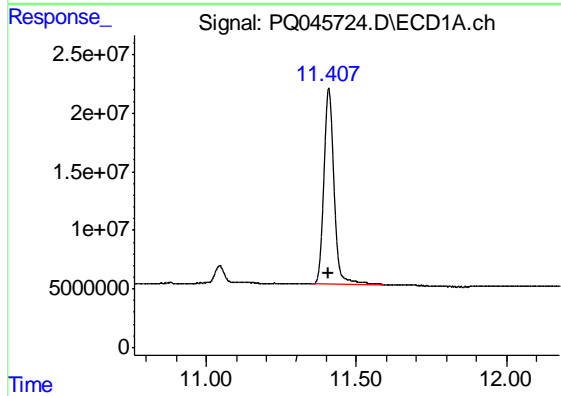
R.T.: 5.243 min  
 Delta R.T.: 0.000 min  
 Response: 83805798  
 Conc: 50.00 ng/ml

Instrument :  
 ECD\_Q  
 ClientSampleId :  
 AR1660ICC500



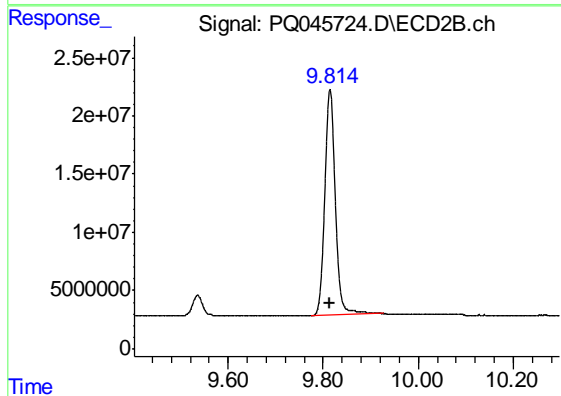
#1 Tetrachloro-m-xylene

R.T.: 4.370 min  
 Delta R.T.: 0.000 min  
 Response: 93419588  
 Conc: 50.00 ng/ml



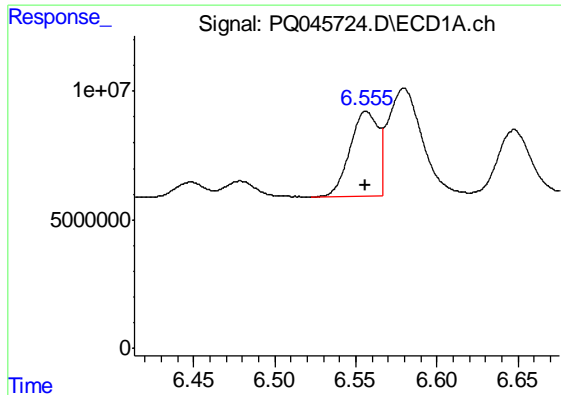
#2 Decachlorobiphenyl

R.T.: 11.408 min  
 Delta R.T.: 0.000 min  
 Response: 391332851  
 Conc: 50.00 ng/ml



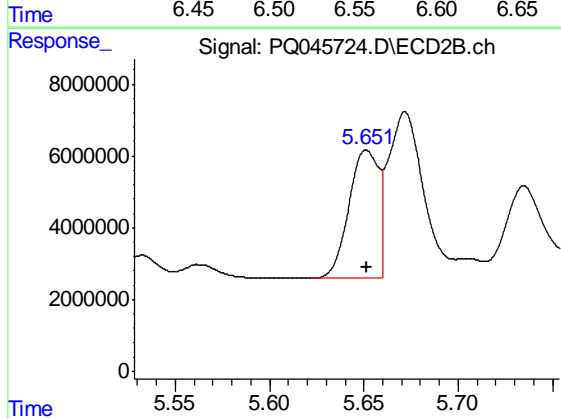
#2 Decachlorobiphenyl

R.T.: 9.814 min  
 Delta R.T.: 0.000 min  
 Response: 298334923  
 Conc: 50.00 ng/ml

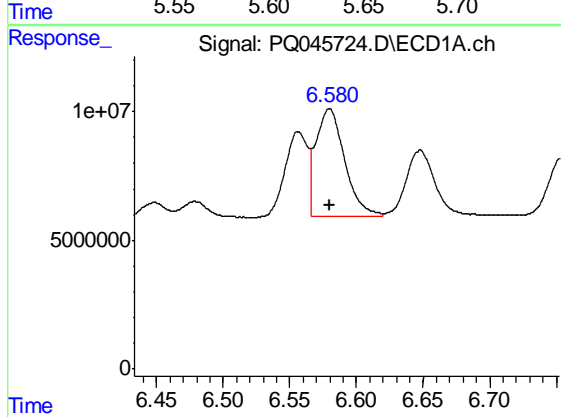


#3 AR-1016-1  
 R.T.: 6.556 min  
 Delta R.T.: 0.000 min  
 Response: 39936782  
 Conc: 500.00 ng/ml

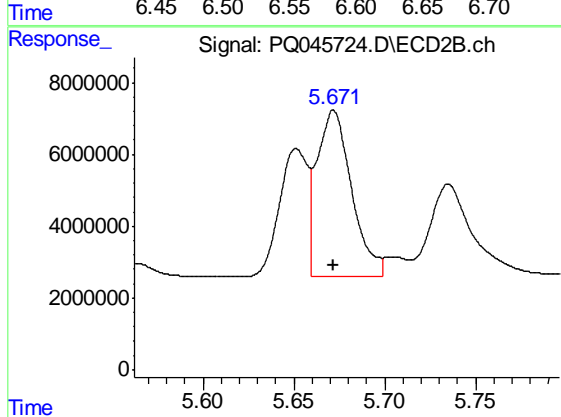
Instrument :  
 ECD\_Q  
 ClientSampleId :  
 AR1660ICC500



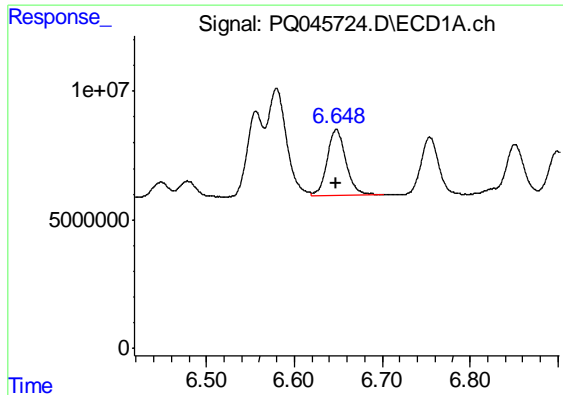
#3 AR-1016-1  
 R.T.: 5.651 min  
 Delta R.T.: 0.000 min  
 Response: 38795071  
 Conc: 500.00 ng/ml



#4 AR-1016-2  
 R.T.: 6.580 min  
 Delta R.T.: 0.000 min  
 Response: 62557581  
 Conc: 500.00 ng/ml



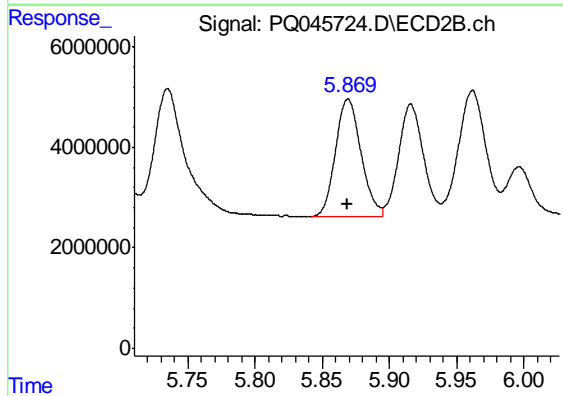
#4 AR-1016-2  
 R.T.: 5.672 min  
 Delta R.T.: 0.000 min  
 Response: 61125628  
 Conc: 500.00 ng/ml



#5 AR-1016-3

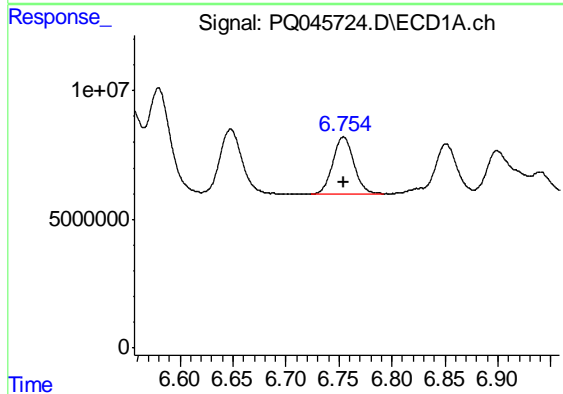
R.T.: 6.648 min  
 Delta R.T.: 0.000 min  
 Response: 38019427  
 Conc: 500.00 ng/ml

Instrument :  
 ECD\_Q  
 ClientSampleId :  
 AR1660ICC500



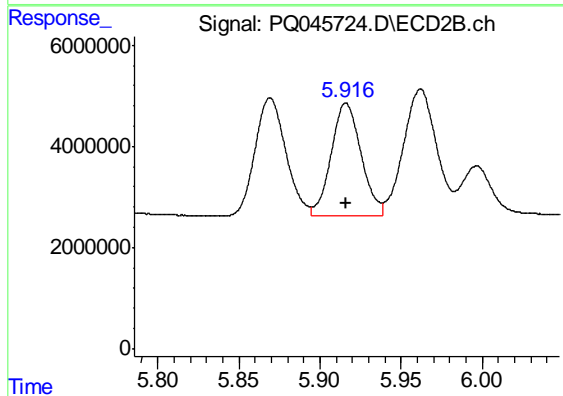
#5 AR-1016-3

R.T.: 5.869 min  
 Delta R.T.: 0.000 min  
 Response: 30704233  
 Conc: 500.00 ng/ml



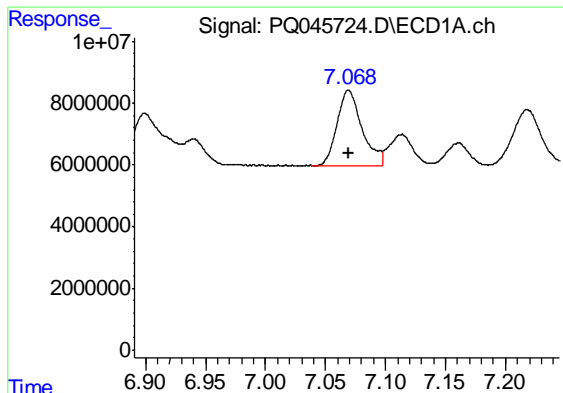
#6 AR-1016-4

R.T.: 6.754 min  
 Delta R.T.: 0.000 min  
 Response: 30894837  
 Conc: 500.00 ng/ml



#6 AR-1016-4

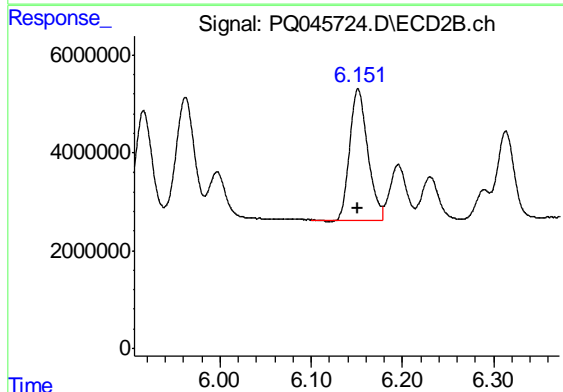
R.T.: 5.916 min  
 Delta R.T.: 0.000 min  
 Response: 28504517  
 Conc: 500.00 ng/ml



#7 AR-1016-5

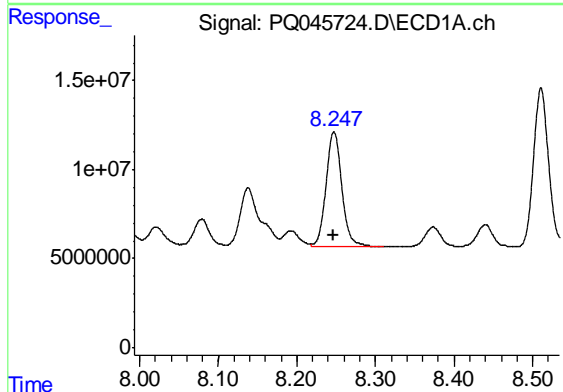
R.T.: 7.069 min  
 Delta R.T.: 0.000 min  
 Response: 35392400  
 Conc: 500.00 ng/ml

Instrument :  
 ECD\_Q  
 ClientSampleId :  
 AR1660ICC500



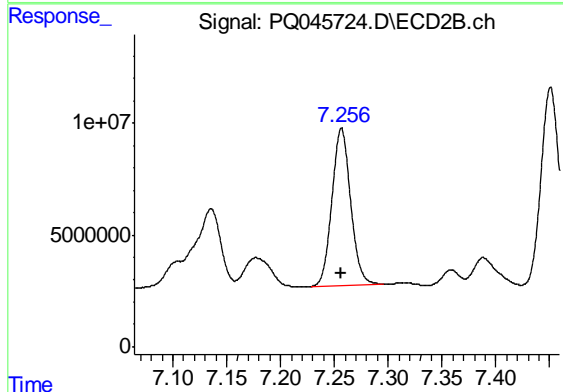
#7 AR-1016-5

R.T.: 6.151 min  
 Delta R.T.: 0.000 min  
 Response: 36593036  
 Conc: 500.00 ng/ml



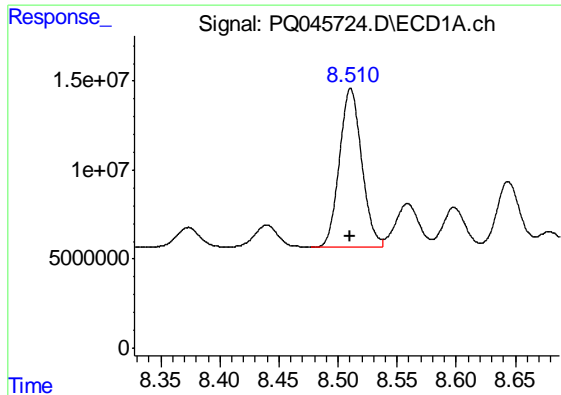
#31 AR-1260-1

R.T.: 8.247 min  
 Delta R.T.: 0.000 min  
 Response: 90094223  
 Conc: 500.00 ng/ml



#31 AR-1260-1

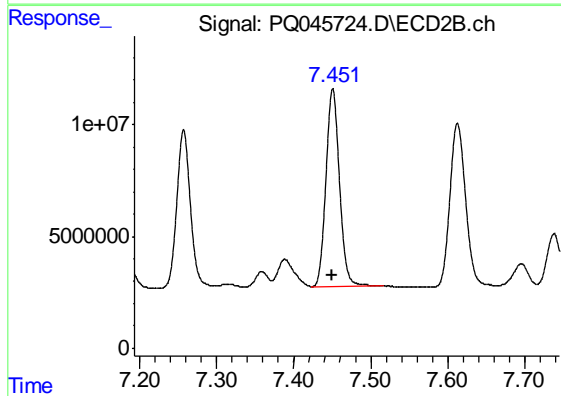
R.T.: 7.257 min  
 Delta R.T.: 0.000 min  
 Response: 84808206  
 Conc: 500.00 ng/ml



#32 AR-1260-2

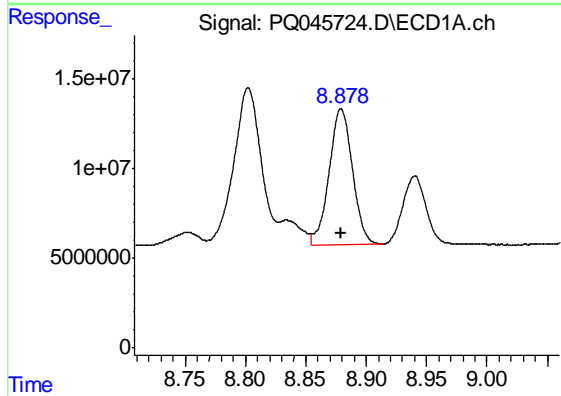
R.T.: 8.511 min  
 Delta R.T.: 0.000 min  
 Response: 117332027  
 Conc: 500.00 ng/ml

Instrument :  
 ECD\_Q  
 ClientSampleId :  
 AR1660ICC500



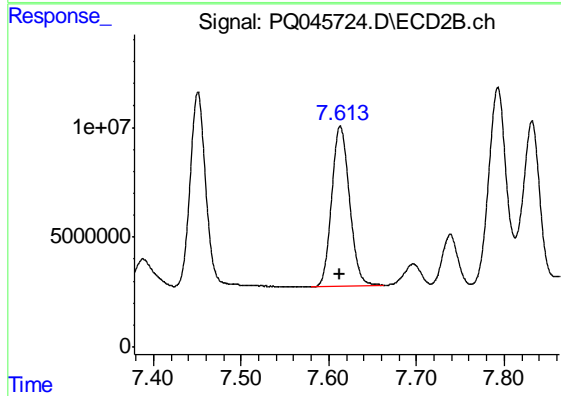
#32 AR-1260-2

R.T.: 7.451 min  
 Delta R.T.: 0.000 min  
 Response: 108368552  
 Conc: 500.00 ng/ml



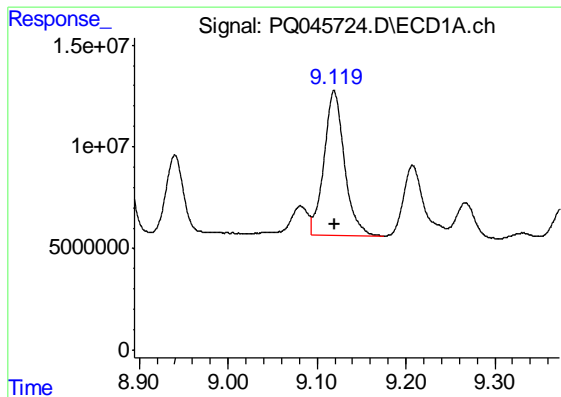
#33 AR-1260-3

R.T.: 8.879 min  
 Delta R.T.: 0.000 min  
 Response: 102282644  
 Conc: 500.00 ng/ml



#33 AR-1260-3

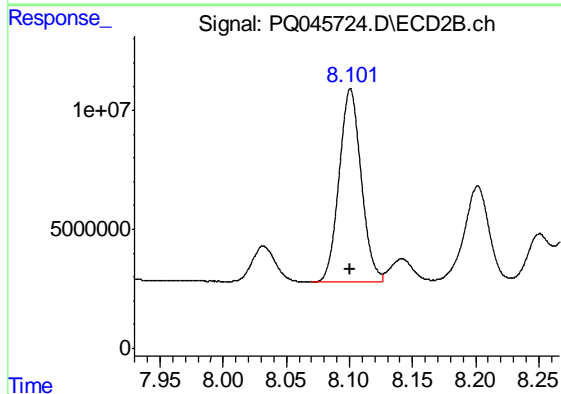
R.T.: 7.613 min  
 Delta R.T.: 0.000 min  
 Response: 102308035  
 Conc: 500.00 ng/ml



#34 AR-1260-4

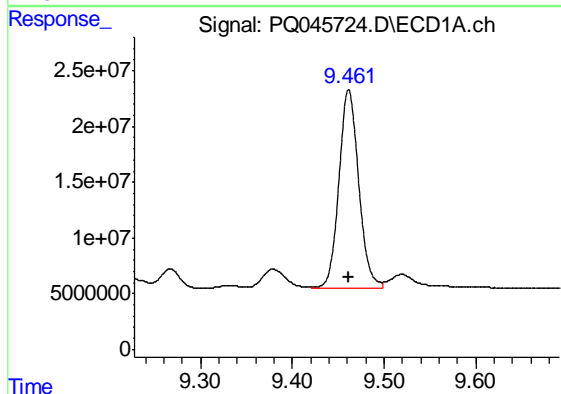
R.T.: 9.119 min  
 Delta R.T.: 0.000 min  
 Response: 113157128  
 Conc: 500.00 ng/ml

Instrument :  
 ECD\_Q  
 ClientSampleId :  
 AR1660ICC500



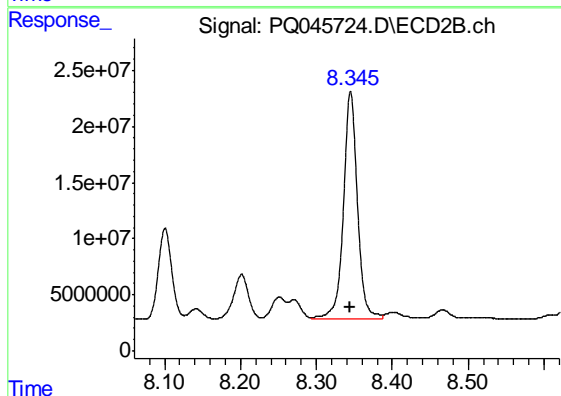
#34 AR-1260-4

R.T.: 8.101 min  
 Delta R.T.: 0.000 min  
 Response: 98801889  
 Conc: 500.00 ng/ml



#35 AR-1260-5

R.T.: 9.461 min  
 Delta R.T.: 0.000 min  
 Response: 268465440  
 Conc: 500.00 ng/ml



#35 AR-1260-5

R.T.: 8.345 min  
 Delta R.T.: 0.000 min  
 Response: 259986016  
 Conc: 500.00 ng/ml