

Data Path : Z:\pestpcbsrv\HPCHEM1\ECD\_Q\Data\PQ122618\  
 Data File : PQ035989.D  
 Signal(s) : Signal #1: ECD1A.ch Signal #2: ECD2B.ch  
 Acq On : 26 Dec 2018 17:45  
 Operator : SM\SJ  
 Sample : J6548-09  
 Misc :  
 ALS Vial : 14 Sample Multiplier: 1

Instrument :  
 ECD\_Q  
 ClientSampleId :  
 D-9

Integration File signal 1: autoint1.e  
 Integration File signal 2: autoint2.e  
 Quant Time: Dec 27 03:19:54 2018  
 Quant Method : Z:\pestpcbsrv\HPCHEM1\ECD\_Q\Method\PQ121318.M  
 Quant Title : GC EXTRACTABLES  
 QLast Update : Mon Dec 24 12:28:48 2018  
 Response via : Initial Calibration  
 Integrator: ChemStation

Volume Inj. : 2 µl  
 Signal #1 Phase : ZB-MR1 Signal #2 Phase: ZB-MR2  
 Signal #1 Info : 30Mx0.32mmx 0.50µ Signal #2 Info : 30M x 0.32mm x 0.25µm

Compound	RT#1	RT#2	Resp#1	Resp#2	ng/ml	ng/ml
-----						
System Monitoring Compounds						
1) SA Tetrachlo...	4.417	3.738	41336535	27300776	10.565	12.218
2) SA Decachlor...	10.097	8.706	14723239	21527468	4.995	12.180 #
Target Compounds						
9) L2 AR-1221-2	4.802	4.106	4007570	5043955	157.302	341.252 #
10) L2 AR-1221-3	4.802	4.106	4007570	5043955	48.156	103.826 #
11) L3 AR-1232-1	4.802	4.106	4007570	5043955	55.111	114.554 #
27) L6 AR-1254-2	0.000	5.821	0	2616454	N.D.	22.644 #
33) L7 AR-1260-3	7.865	0.000	892219	0	6.660	N.D. #
36) L8 AR-1262-1	7.865	0.000	892219	0	4.073	N.D. #
-----						

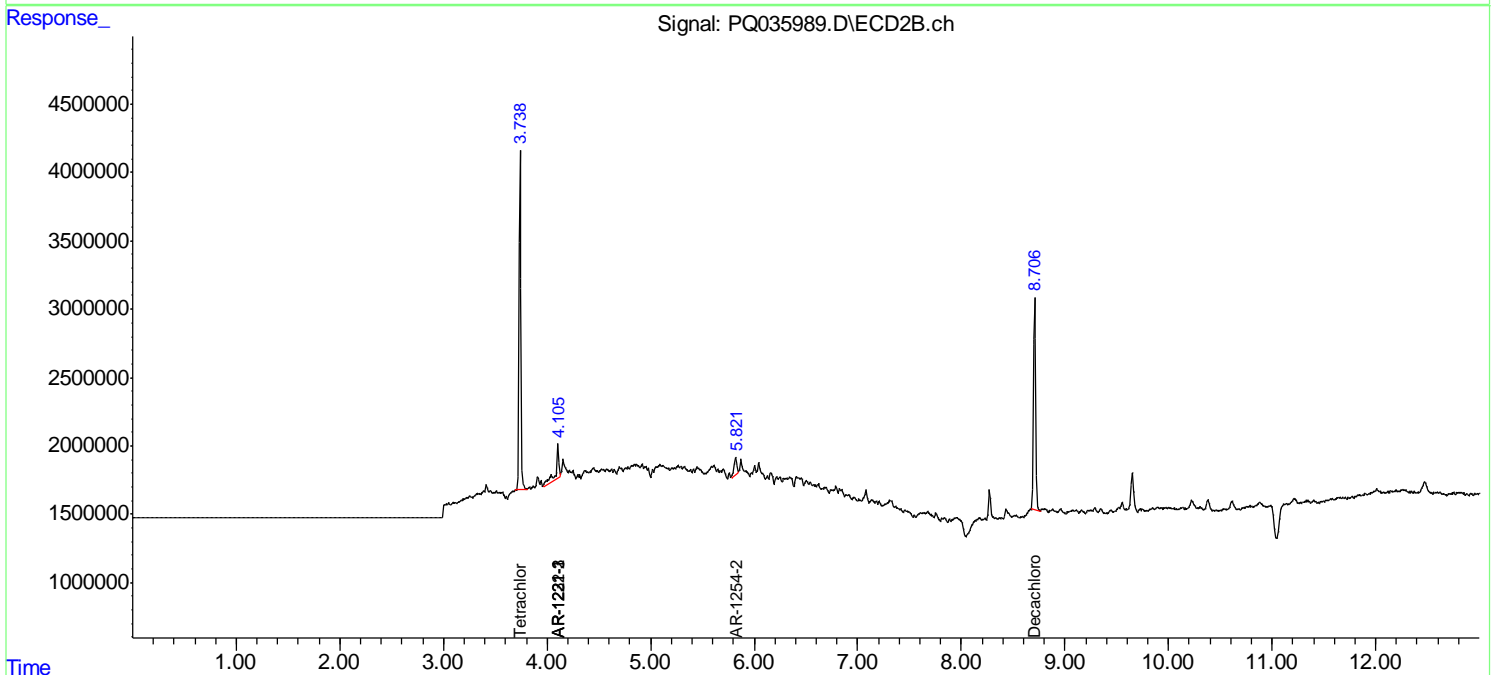
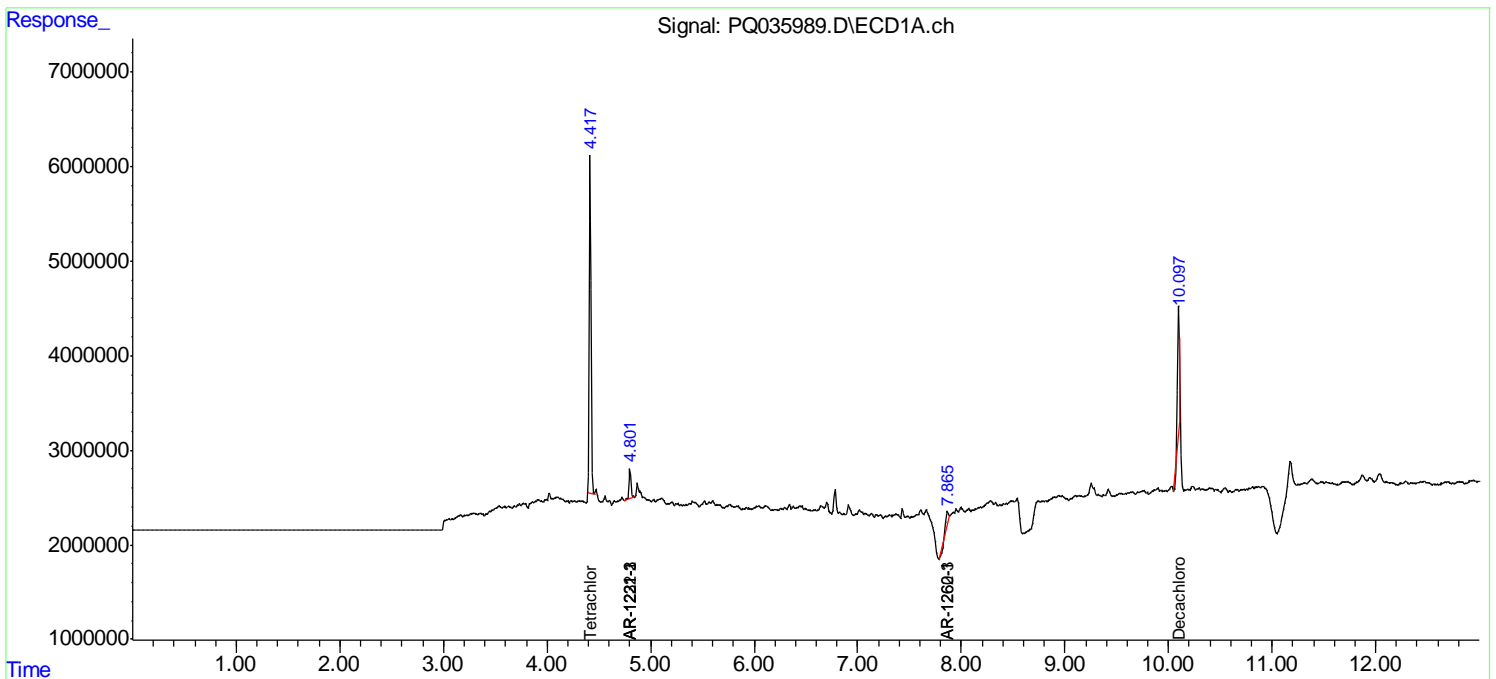
(f)=RT Delta > 1/2 Window (#)=Amounts differ by > 25% (m)=manual int.

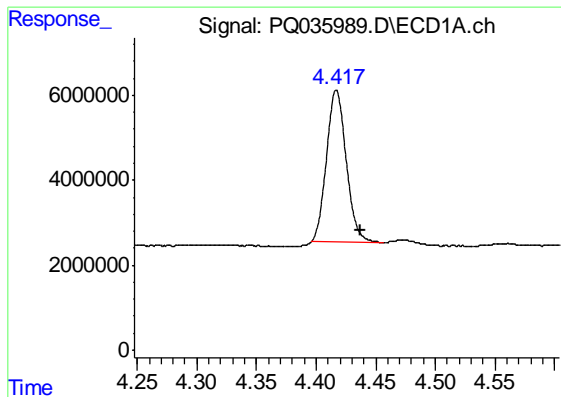
Data Path : Z:\pestpcbsrv\HPCHEM1\ECD\_Q\Data\PQ122618\  
Data File : PQ035989.D  
Signal(s) : Signal #1: ECD1A.ch Signal #2: ECD2B.ch  
Acq On : 26 Dec 2018 17:45  
Operator : SM\SJ  
Sample : J6548-09  
Misc :  
ALS Vial : 14 Sample Multiplier: 1

Instrument :  
ECD\_Q  
ClientSampled :  
D-9

Integration File signal 1: autoint1.e  
Integration File signal 2: autoint2.e  
Quant Time: Dec 27 03:19:54 2018  
Quant Method : Z:\pestpcbsrv\HPCHEM1\ECD\_Q\Method\PQ121318.M  
Quant Title : GC EXTRACTABLES  
QLast Update : Mon Dec 24 12:28:48 2018  
Response via : Initial Calibration  
Integrator: ChemStation

Volume Inj. : 2 µl  
Signal #1 Phase : ZB-MR1 Signal #2 Phase: ZB-MR2  
Signal #1 Info : 30Mx0.32mmx 0.50µ Signal #2 Info : 30M x 0.32mm x 0.25µm

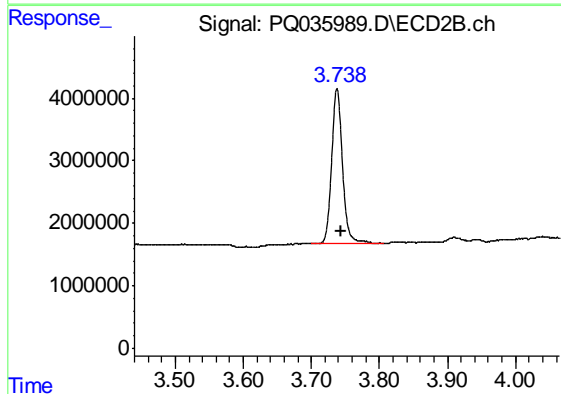




#1 Tetrachloro-m-xylene

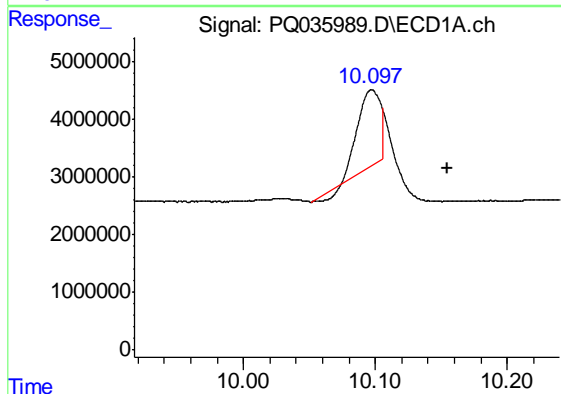
R.T.: 4.417 min  
 Delta R.T.: -0.020 min  
 Response: 41336535  
 Conc: 10.56 ng/ml

Instrument :  
 ECD\_Q  
 ClientSampled :  
 D-9



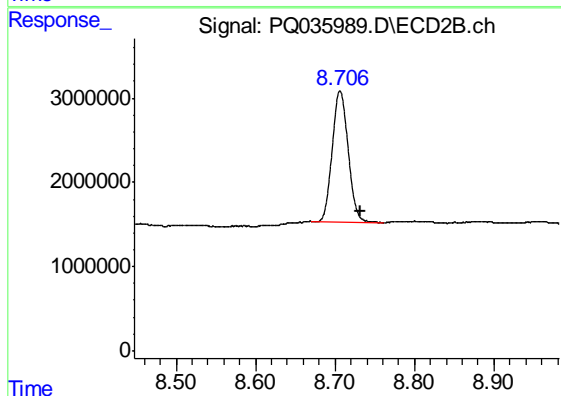
#1 Tetrachloro-m-xylene

R.T.: 3.738 min  
 Delta R.T.: -0.006 min  
 Response: 27300776  
 Conc: 12.22 ng/ml



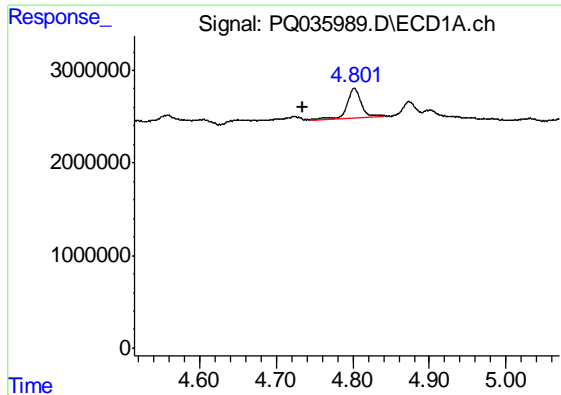
#2 Decachlorobiphenyl

R.T.: 10.097 min  
 Delta R.T.: -0.058 min  
 Response: 14723239  
 Conc: 5.00 ng/ml



#2 Decachlorobiphenyl

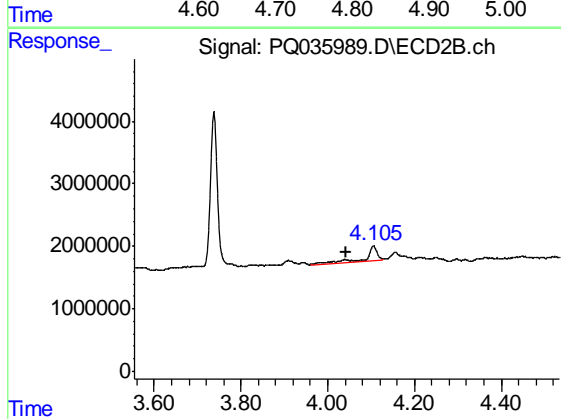
R.T.: 8.706 min  
 Delta R.T.: -0.026 min  
 Response: 21527468  
 Conc: 12.18 ng/ml



#9 AR-1221-2

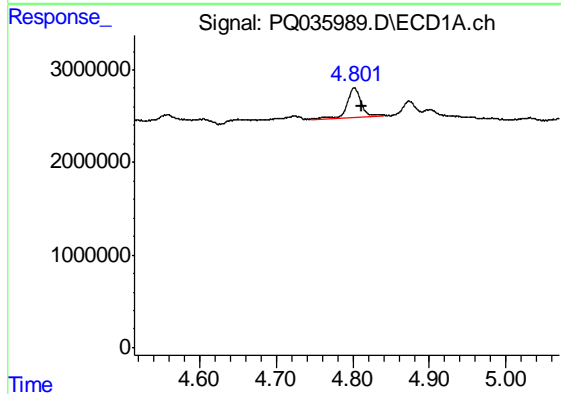
R.T.: 4.802 min  
 Delta R.T.: 0.067 min  
 Response: 4007570  
 Conc: 157.30 ng/ml

Instrument :  
 ECD\_Q  
 ClientSampled :  
 D-9



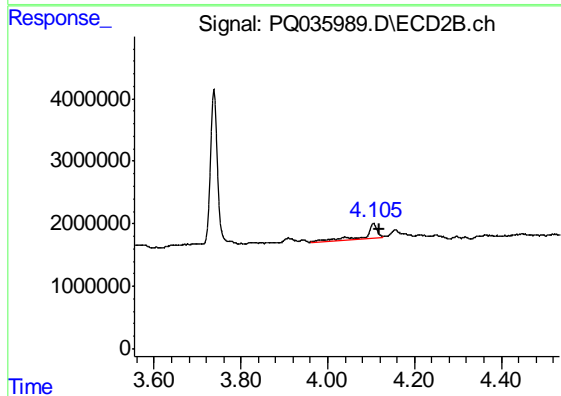
#9 AR-1221-2

R.T.: 4.106 min  
 Delta R.T.: 0.062 min  
 Response: 5043955  
 Conc: 341.25 ng/ml



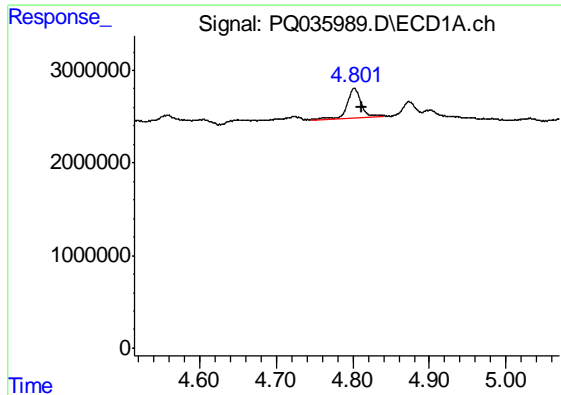
#10 AR-1221-3

R.T.: 4.802 min  
 Delta R.T.: -0.010 min  
 Response: 4007570  
 Conc: 48.16 ng/ml



#10 AR-1221-3

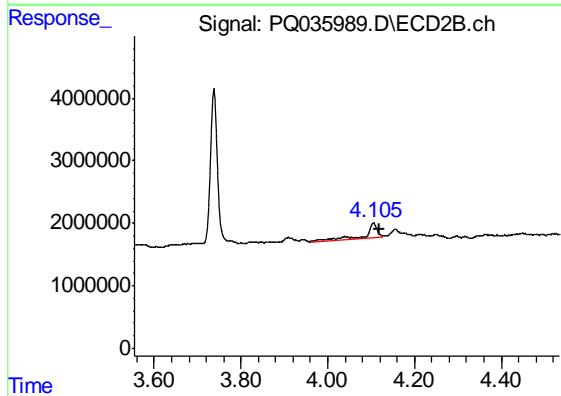
R.T.: 4.106 min  
 Delta R.T.: -0.013 min  
 Response: 5043955  
 Conc: 103.83 ng/ml



#11 AR-1232-1

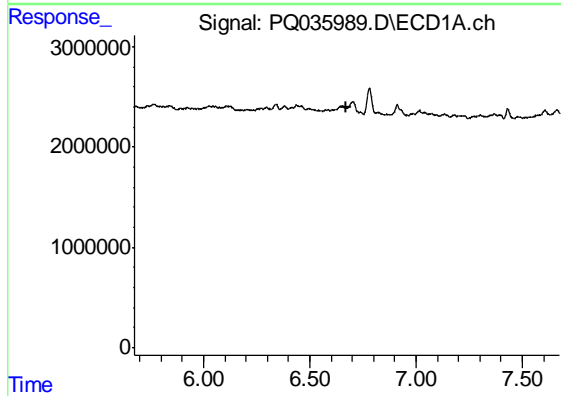
R.T.: 4.802 min  
 Delta R.T.: -0.010 min  
 Response: 4007570  
 Conc: 55.11 ng/ml

Instrument :  
 ECD\_Q  
 ClientSampled :  
 D-9



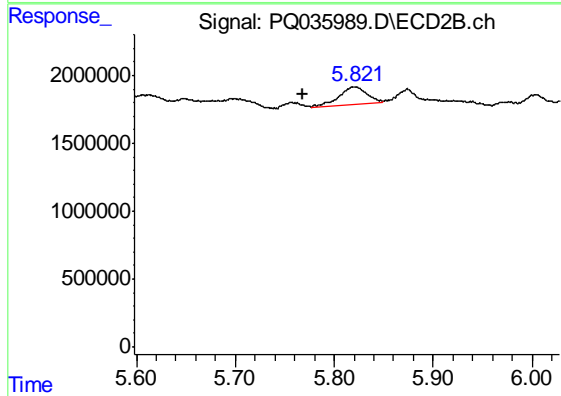
#11 AR-1232-1

R.T.: 4.106 min  
 Delta R.T.: -0.013 min  
 Response: 5043955  
 Conc: 114.55 ng/ml



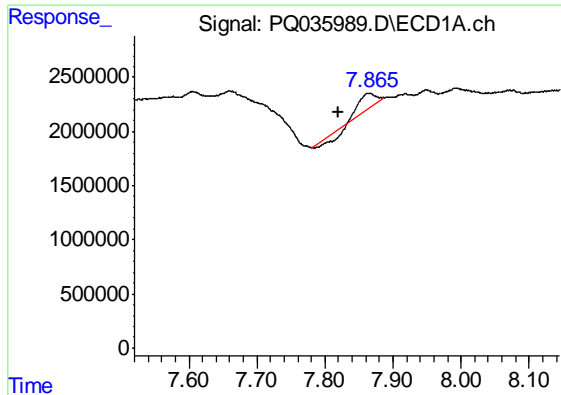
#27 AR-1254-2

R.T.: 0.000 min  
 Exp R.T. : 6.674 min  
 Response: 0  
 Conc: N.D.



#27 AR-1254-2

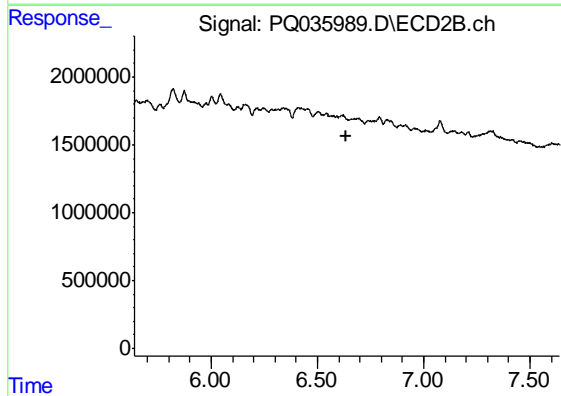
R.T.: 5.821 min  
 Delta R.T.: 0.053 min  
 Response: 2616454  
 Conc: 22.64 ng/ml



#33 AR-1260-3

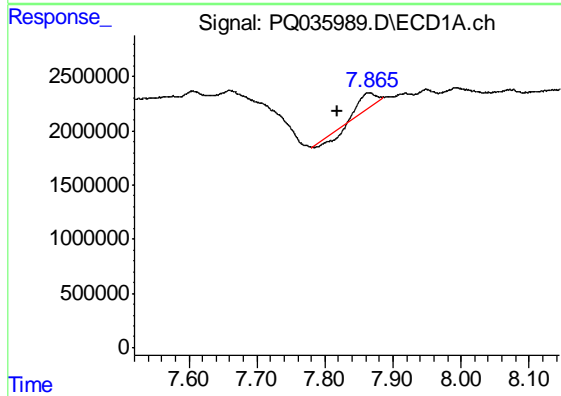
R.T.: 7.865 min  
 Delta R.T.: 0.046 min  
 Response: 892219  
 Conc: 6.66 ng/ml

Instrument :  
 ECD\_Q  
 ClientSampled :  
 D-9



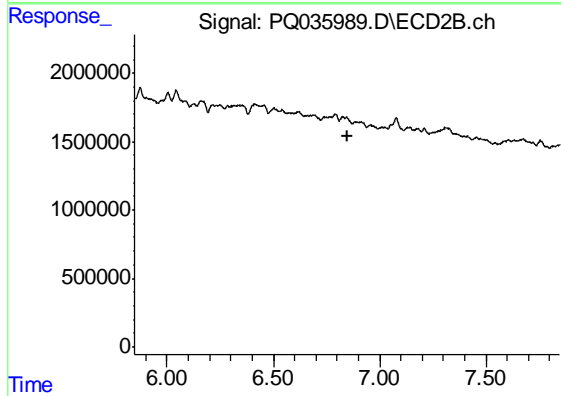
#33 AR-1260-3

R.T.: 0.000 min  
 Exp R.T. : 6.639 min  
 Response: 0  
 Conc: N.D.



#36 AR-1262-1

R.T.: 7.865 min  
 Delta R.T.: 0.047 min  
 Response: 892219  
 Conc: 4.07 ng/ml



#36 AR-1262-1

R.T.: 0.000 min  
 Exp R.T. : 6.847 min  
 Response: 0  
 Conc: N.D.