

Data Path : Z:\pestpcbsrv\HPCHEM1\ECD_Q\Data\PQ122618\
 Data File : PQ036017.D
 Signal(s) : Signal #1: ECD1A.ch Signal #2: ECD2B.ch
 Acq On : 27 Dec 2018 00:59
 Operator : SM\SJ
 Sample : J6531-08
 Misc :
 ALS Vial : 38 Sample Multiplier: 1

Instrument :
 ECD_Q
 ClientSampled :

Integration File signal 1: autoint1.e
 Integration File signal 2: autoint2.e
 Quant Time: Dec 27 06:16:19 2018
 Quant Method : Z:\pestpcbsrv\HPCHEM1\ECD_Q\Method\PQ121318.M
 Quant Title : GC EXTRACTABLES
 QLast Update : Mon Dec 24 12:28:48 2018
 Response via : Initial Calibration
 Integrator: ChemStation

Volume Inj. : 2 µl
 Signal #1 Phase : ZB-MR1 Signal #2 Phase: ZB-MR2
 Signal #1 Info : 30Mx0.32mmx 0.50µ Signal #2 Info : 30M x 0.32mm x 0.25µm

Compound	RT#1	RT#2	Resp#1	Resp#2	ng/ml	ng/ml
System Monitoring Compounds						
1) SA Tetrachlo...	4.415	3.736	51610383	30906434	13.191	13.832
2) SA Decachlor...	10.090	8.705	30294858	23119780	10.278	13.081 #
Target Compounds						
3) L1 AR-1016-1	5.596	0.000	1867862	0	14.599	N.D. #
4) L1 AR-1016-2	5.596	0.000	1867862	0	9.739	N.D. #
5) L1 AR-1016-3	5.734	4.951	6779780	1959088	59.238	33.546 #
6) L1 AR-1016-4	5.734	0.000	6779780	0	71.195	N.D. #
7) L1 AR-1016-5	6.136	5.219	3502805	4094357	38.477	66.696 #
13) L3 AR-1232-3	5.596	4.951	1867862	1959088	22.843	76.672 #
14) L3 AR-1232-4	5.734	0.000	6779780	0	169.315	N.D. #
15) L3 AR-1232-5	0.000	5.219	0	4094357	N.D.	163.923 #
16) L4 AR-1242-1	5.596	0.000	1867862	0	19.360	N.D. #
17) L4 AR-1242-2	5.596	0.000	1867862	0	12.874	N.D. #
18) L4 AR-1242-3	5.734	4.951	6779780	1959088	78.364	43.501 #
19) L4 AR-1242-4	5.734	0.000	6779780	0	98.002	N.D. #
20) L4 AR-1242-5	6.578	5.605	1724506	7819006	21.981	141.676 #
21) L5 AR-1248-1	5.596	0.000	1867862	0	28.298	N.D. #
23) L5 AR-1248-3	6.136	0.000	3502805	0	33.523	N.D. #
24) L5 AR-1248-4	6.458	5.219	9564831	4094357	77.669	59.146
25) L5 AR-1248-5	6.578	5.712	1724506	7907942	14.740	112.198 #
26) L6 AR-1254-1	6.458	5.605	9564831	7819006	62.830	58.618
27) L6 AR-1254-2	6.701	5.775	53197205	3463962	224.831	29.978 #
28) L6 AR-1254-3	7.064	6.152	4210962	18450943	16.401	95.572 #
29) L6 AR-1254-4	7.333	6.408	-3331658	5954556	N.D.	49.479 #
30) L6 AR-1254-5	7.781	6.820	6489941	4823500	33.086	29.617
31) L7 AR-1260-1	7.169	6.280	9463136	6035267	51.318	47.980
32) L7 AR-1260-2	7.425	6.466	33857292	7067316	155.820	46.799 #
33) L7 AR-1260-3	7.781	6.618	6489941	5395236	48.446	38.611
34) L7 AR-1260-4	8.009	7.084	12022039	3290180	72.945	35.433 #
35) L7 AR-1260-5	8.328	7.328	7590259	8393674	25.456	37.405 #
36) L8 AR-1262-1	7.841	6.820	2220753	4823500	10.137	31.430 #
37) L8 AR-1262-2	8.328	7.328	7590259	8393674	20.148	31.453 #
38) L8 AR-1262-3	8.655	7.606	3367954	3368870	14.010	32.461 #
39) L8 AR-1262-4	8.725	7.669	5781982	4897870	32.003	26.440
40) L8 AR-1262-5	9.371	0.000	2914488	0	25.592	N.D. #
41) L9 AR-1268-1	8.655	7.606	3367954	3368870	6.980	10.103 #
42) L9 AR-1268-2	8.725	7.669	5781982	4897870	13.401	16.527
43) L9 AR-1268-3	8.944	7.871	3270712	2854115	8.655	11.677 #
44) L9 AR-1268-4	9.371	0.000	2914488	0	21.259	N.D. #
45) L9 AR-1268-5	9.770	0.000	10078062	0	8.706	N.D. #

Data Path : Z:\pestpcbsrv\HPCHEM1\ECD_Q\Data\PQ122618\
Data File : PQ036017.D
Signal(s) : Signal #1: ECD1A.ch Signal #2: ECD2B.ch
Acq On : 27 Dec 2018 00:59
Operator : SM\SJ
Sample : J6531-08
Misc :
ALS Vial : 38 Sample Multiplier: 1

Instrument :
ECD_Q
ClientSampleId :

Integration File signal 1: autoint1.e
Integration File signal 2: autoint2.e
Quant Time: Dec 27 06:16:19 2018
Quant Method : Z:\pestpcbsrv\HPCHEM1\ECD_Q\Method\PQ121318.M
Quant Title : GC EXTRACTABLES
QLast Update : Mon Dec 24 12:28:48 2018
Response via : Initial Calibration
Integrator: ChemStation

Volume Inj. : 2 µl
Signal #1 Phase : ZB-MR1 Signal #2 Phase: ZB-MR2
Signal #1 Info : 30Mx0.32mmx 0.50µ Signal #2 Info : 30M x 0.32mm x 0.25µm

Compound	RT#1	RT#2	Resp#1	Resp#2	ng/ml	ng/ml
----------	------	------	--------	--------	-------	-------

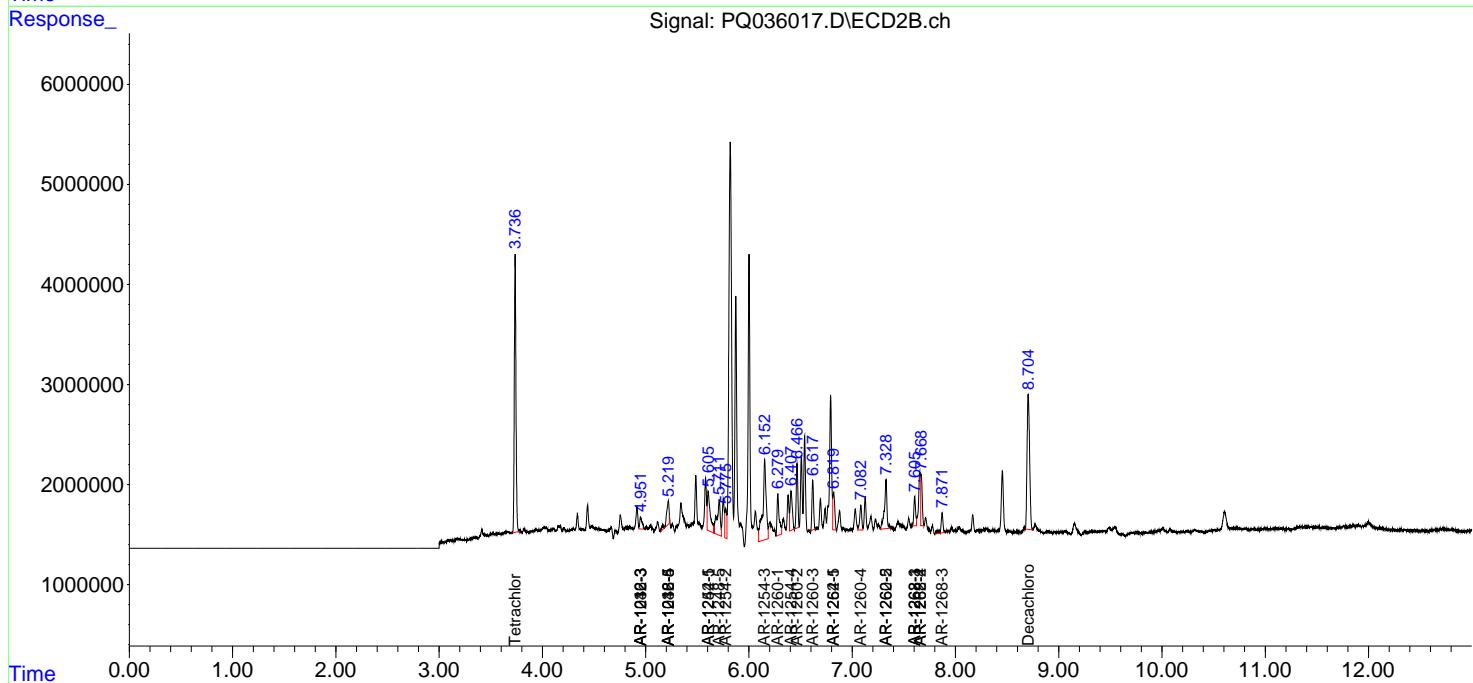
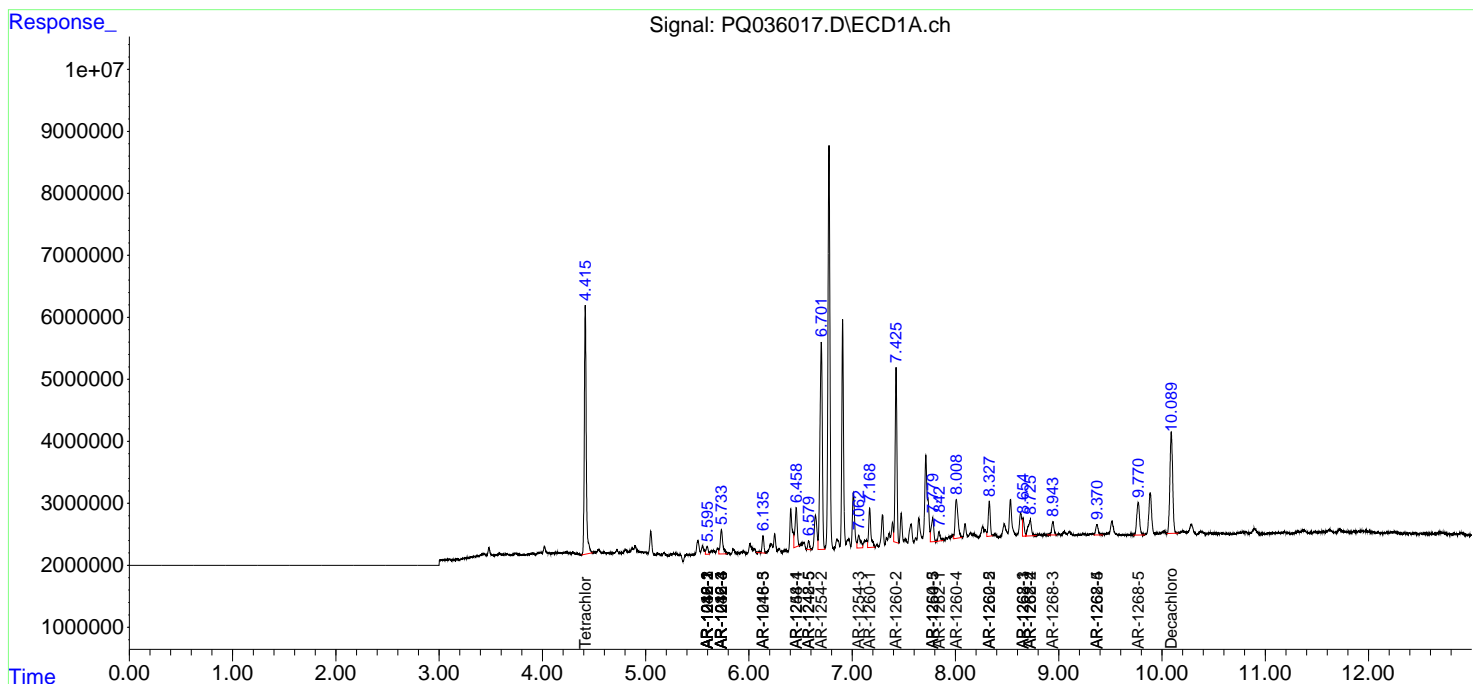
(f)=RT Delta > 1/2 Window (#)=Amounts differ by > 25% (m)=manual int.

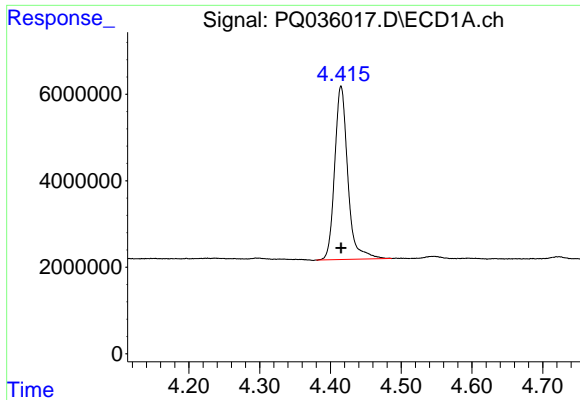
Data Path : Z:\pestpcbsrv\HPCHEM1\ECD_Q\Data\PQ122618\
 Data File : PQ036017.D
 Signal(s) : Signal #1: ECD1A.ch Signal #2: ECD2B.ch
 Acq On : 27 Dec 2018 00:59
 Operator : SM\SJ
 Sample : J6531-08
 Misc :
 ALS Vial : 38 Sample Multiplier: 1

Instrument :
 ECD_Q
 ClientSampled :

Integration File signal 1: autoint1.e
 Integration File signal 2: autoint2.e
 Quant Time: Dec 27 06:16:19 2018
 Quant Method : Z:\pestpcbsrv\HPCHEM1\ECD_Q\Method\PQ121318.M
 Quant Title : GC EXTRACTABLES
 QLast Update : Mon Dec 24 12:28:48 2018
 Response via : Initial Calibration
 Integrator: ChemStation

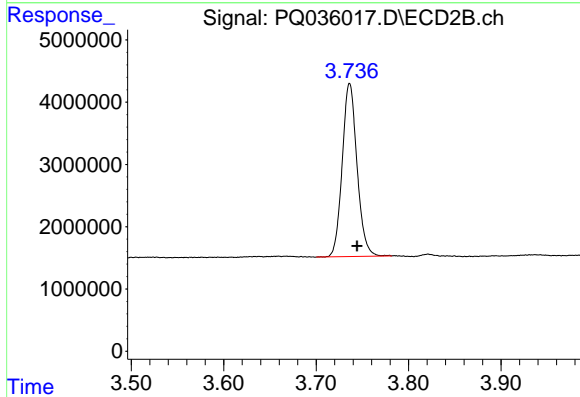
Volume Inj. : 2 µl
 Signal #1 Phase : ZB-MR1 Signal #2 Phase: ZB-MR2
 Signal #1 Info : 30Mx0.32mmx 0.50µ Signal #2 Info : 30M x 0.32mm x 0.25µm



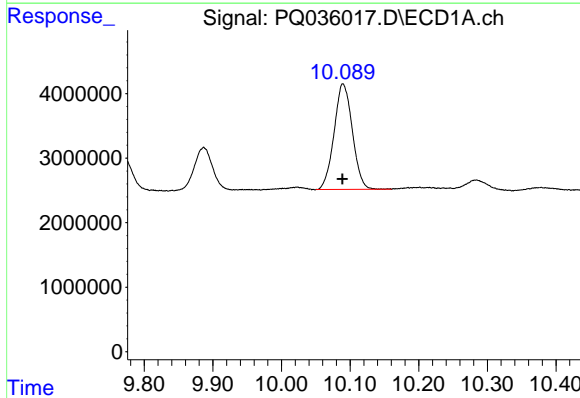


#1 Tetrachloro-m-xylene
 R.T.: 4.415 min
 Delta R.T.: 0.000 min
 Response: 51610383
 Conc: 13.19 ng/ml

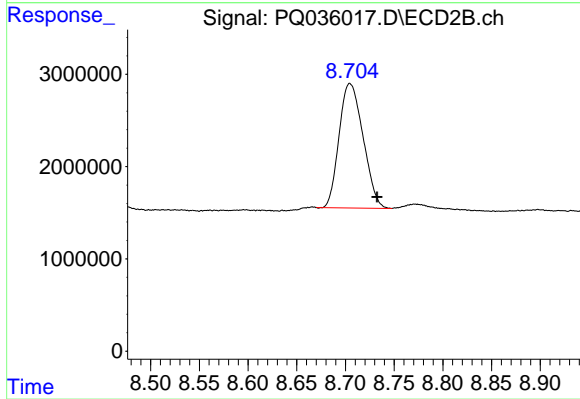
Instrument :
 ECD_Q
 ClientSampleId :



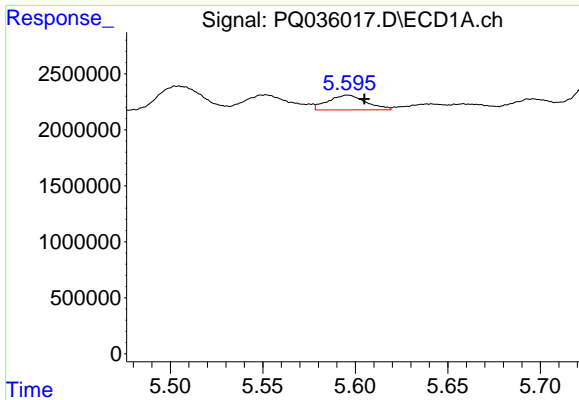
#1 Tetrachloro-m-xylene
 R.T.: 3.736 min
 Delta R.T.: -0.008 min
 Response: 30906434
 Conc: 13.83 ng/ml



#2 Decachlorobiphenyl
 R.T.: 10.090 min
 Delta R.T.: 0.000 min
 Response: 30294858
 Conc: 10.28 ng/ml



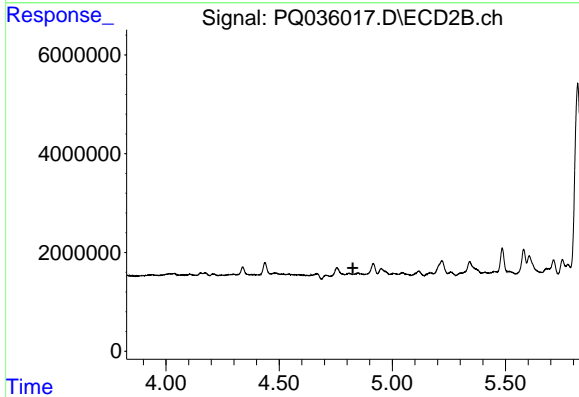
#2 Decachlorobiphenyl
 R.T.: 8.705 min
 Delta R.T.: -0.028 min
 Response: 23119780
 Conc: 13.08 ng/ml



#3 AR-1016-1

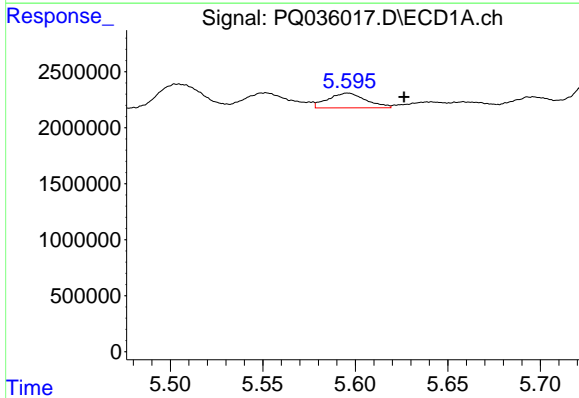
R.T.: 5.596 min
 Delta R.T.: -0.009 min
 Response: 1867862
 Conc: 14.60 ng/ml

Instrument :
 ECD_Q
 ClientSampled :



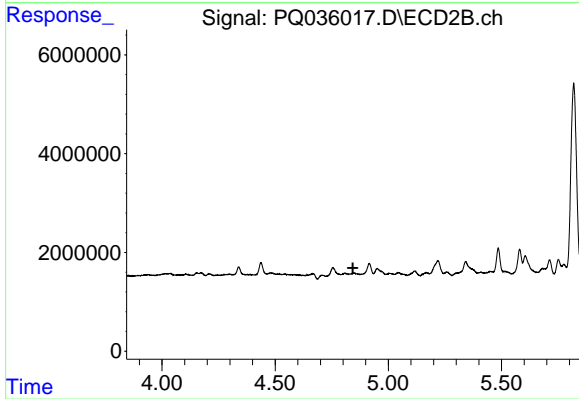
#3 AR-1016-1

R.T.: 0.000 min
 Exp R.T. : 4.826 min
 Response: 0
 Conc: N.D.



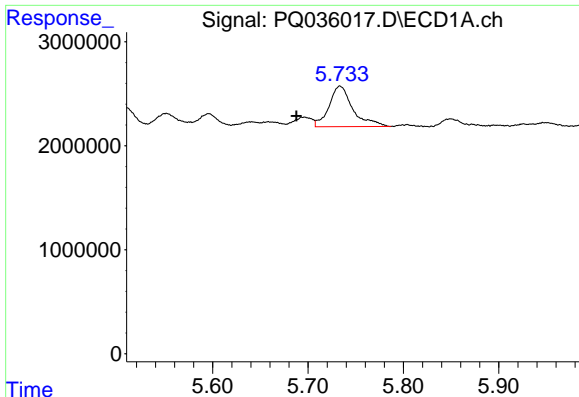
#4 AR-1016-2

R.T.: 5.596 min
 Delta R.T.: -0.030 min
 Response: 1867862
 Conc: 9.74 ng/ml



#4 AR-1016-2

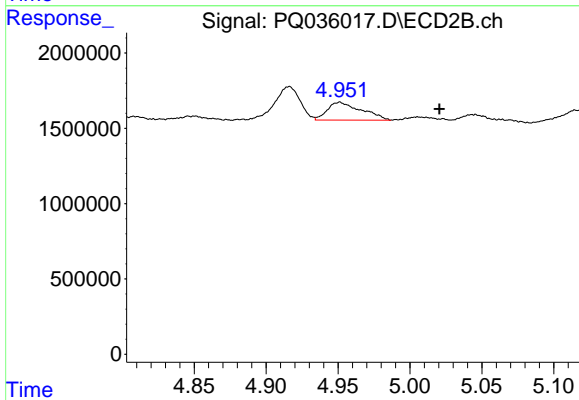
R.T.: 0.000 min
 Exp R.T. : 4.844 min
 Response: 0
 Conc: N.D.



#5 AR-1016-3

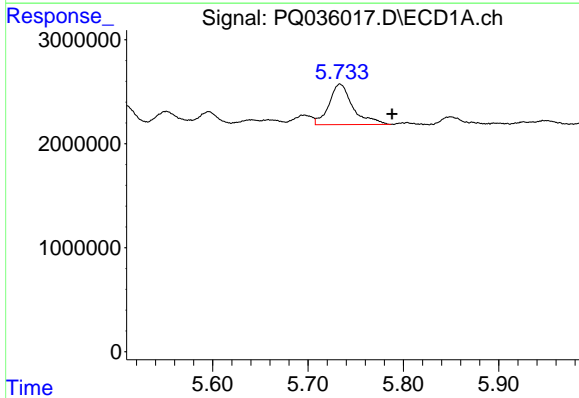
R.T.: 5.734 min
 Delta R.T.: 0.046 min
 Response: 6779780
 Conc: 59.24 ng/ml

Instrument :
 ECD_Q
 ClientSampleId :



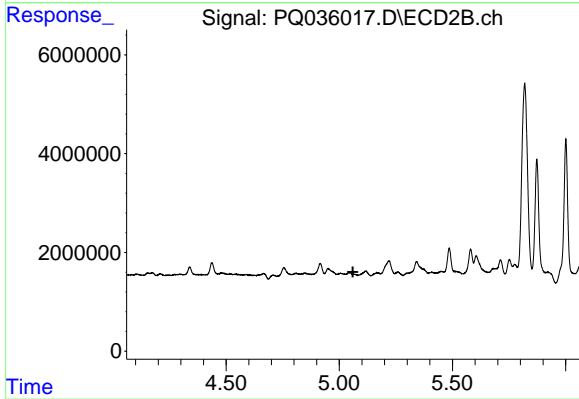
#5 AR-1016-3

R.T.: 4.951 min
 Delta R.T.: -0.069 min
 Response: 1959088
 Conc: 33.55 ng/ml



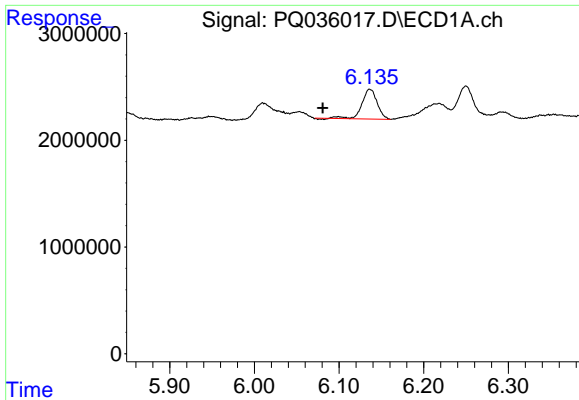
#6 AR-1016-4

R.T.: 5.734 min
 Delta R.T.: -0.055 min
 Response: 6779780
 Conc: 71.20 ng/ml



#6 AR-1016-4

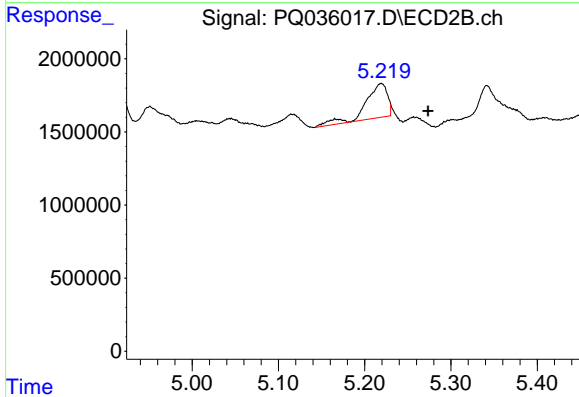
R.T.: 0.000 min
 Exp R.T. : 5.060 min
 Response: 0
 Conc: N.D.



#7 AR-1016-5

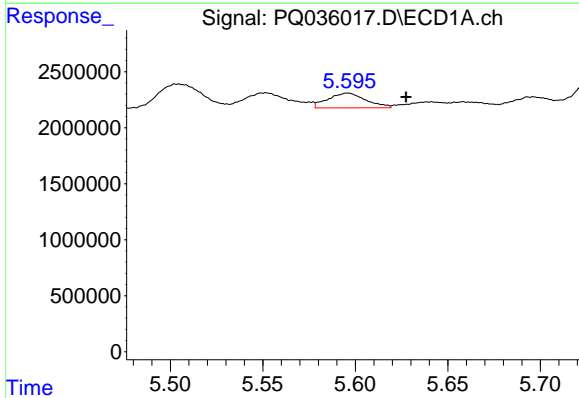
R.T.: 6.136 min
 Delta R.T.: 0.056 min
 Response: 3502805
 Conc: 38.48 ng/ml

Instrument :
 ECD_Q
 ClientSampleId :



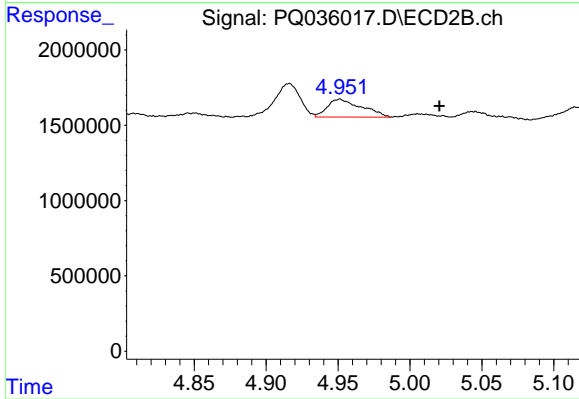
#7 AR-1016-5

R.T.: 5.219 min
 Delta R.T.: -0.054 min
 Response: 4094357
 Conc: 66.70 ng/ml



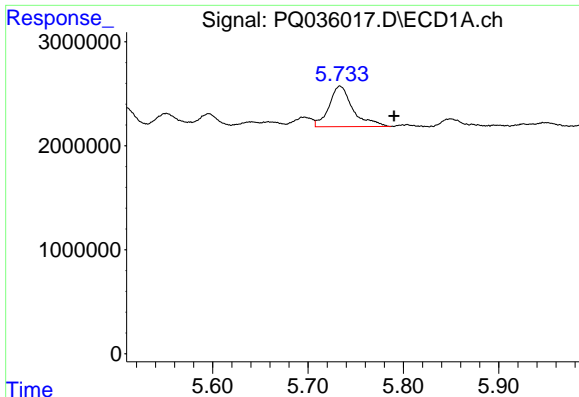
#13 AR-1232-3

R.T.: 5.596 min
 Delta R.T.: -0.031 min
 Response: 1867862
 Conc: 22.84 ng/ml



#13 AR-1232-3

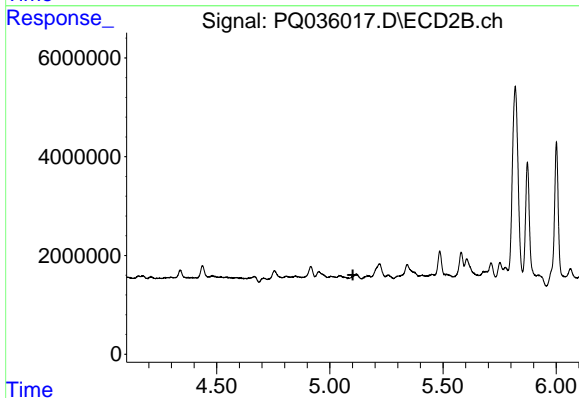
R.T.: 4.951 min
 Delta R.T.: -0.069 min
 Response: 1959088
 Conc: 76.67 ng/ml



#14 AR-1232-4

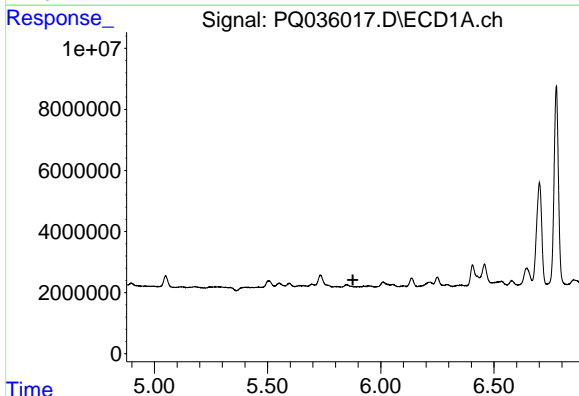
R.T.: 5.734 min
 Delta R.T.: -0.057 min
 Response: 6779780
 Conc: 169.31 ng/ml

Instrument :
 ECD_Q
 ClientSampled :



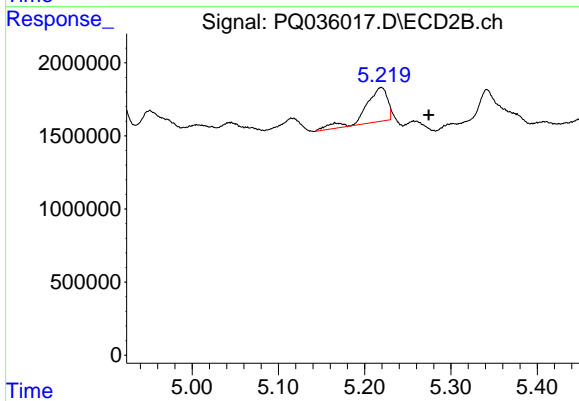
#14 AR-1232-4

R.T.: 0.000 min
 Exp R.T. : 5.102 min
 Response: 0
 Conc: N.D.



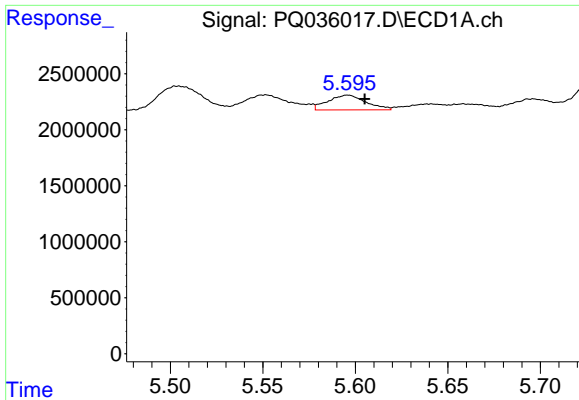
#15 AR-1232-5

R.T.: 0.000 min
 Exp R.T. : 5.877 min
 Response: 0
 Conc: N.D.



#15 AR-1232-5

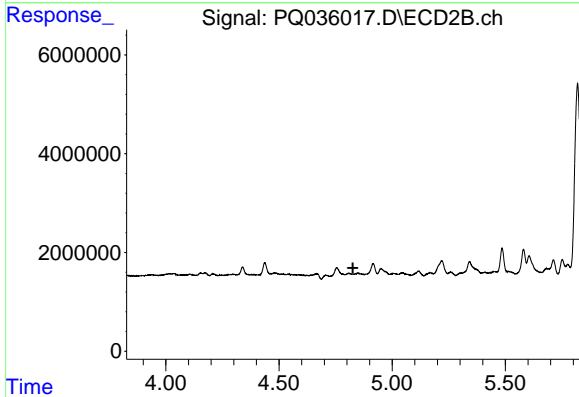
R.T.: 5.219 min
 Delta R.T.: -0.055 min
 Response: 4094357
 Conc: 163.92 ng/ml



#16 AR-1242-1

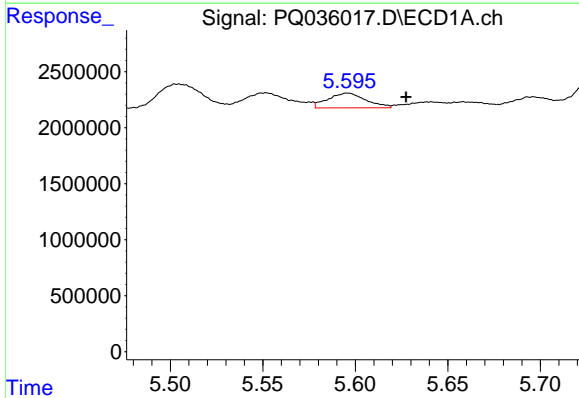
R.T.: 5.596 min
 Delta R.T.: -0.009 min
 Response: 1867862
 Conc: 19.36 ng/ml

Instrument :
 ECD_Q
 ClientSampled :



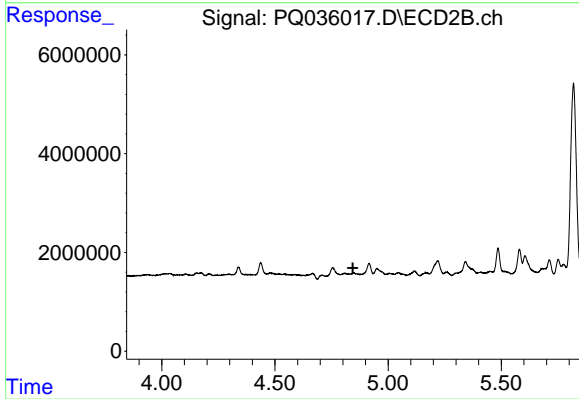
#16 AR-1242-1

R.T.: 0.000 min
 Exp R.T. : 4.827 min
 Response: 0
 Conc: N.D.



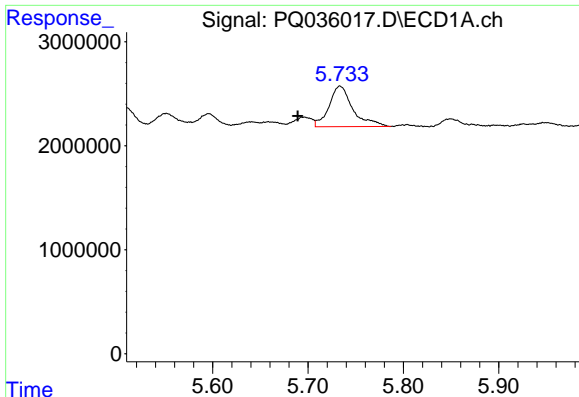
#17 AR-1242-2

R.T.: 5.596 min
 Delta R.T.: -0.031 min
 Response: 1867862
 Conc: 12.87 ng/ml



#17 AR-1242-2

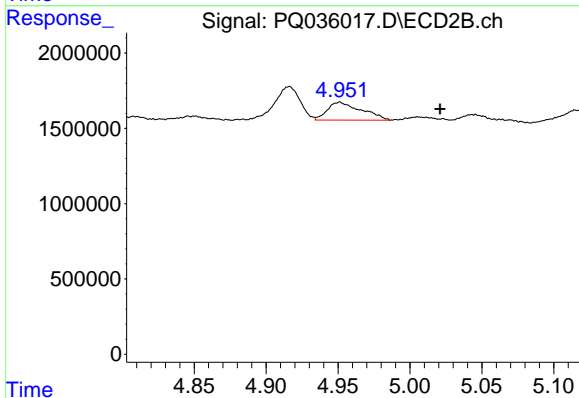
R.T.: 0.000 min
 Exp R.T. : 4.844 min
 Response: 0
 Conc: N.D.



#18 AR-1242-3

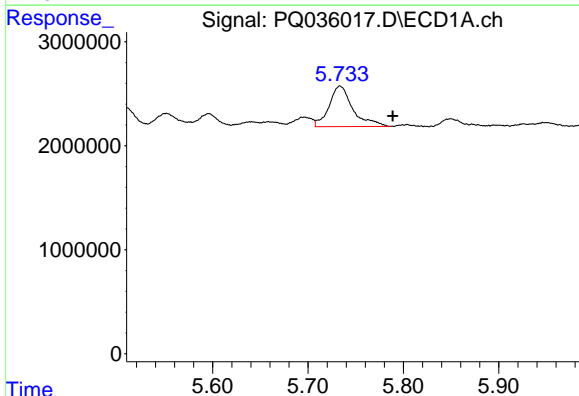
R.T.: 5.734 min
 Delta R.T.: 0.045 min
 Response: 6779780
 Conc: 78.36 ng/ml

Instrument :
 ECD_Q
 ClientSampleId :



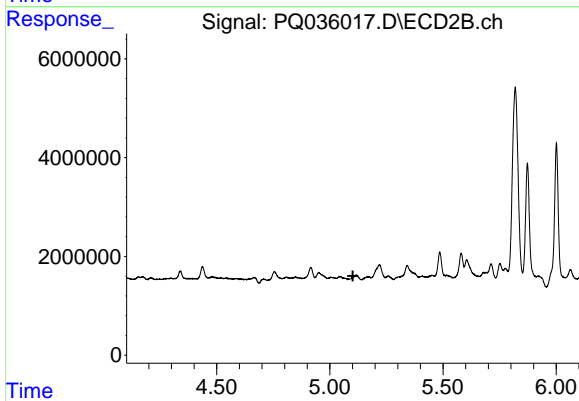
#18 AR-1242-3

R.T.: 4.951 min
 Delta R.T.: -0.070 min
 Response: 1959088
 Conc: 43.50 ng/ml



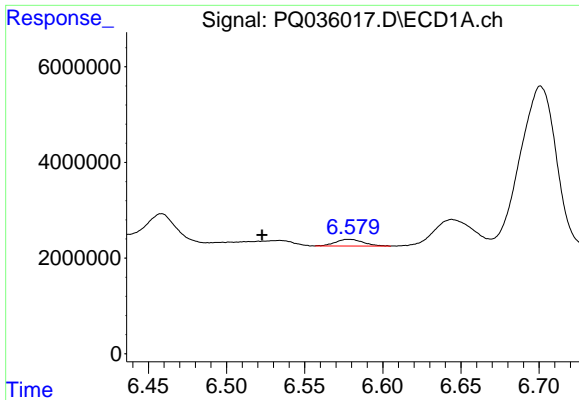
#19 AR-1242-4

R.T.: 5.734 min
 Delta R.T.: -0.055 min
 Response: 6779780
 Conc: 98.00 ng/ml



#19 AR-1242-4

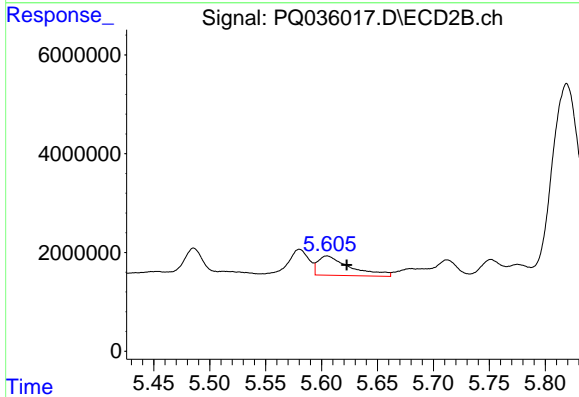
R.T.: 0.000 min
 Exp R.T. : 5.102 min
 Response: 0
 Conc: N.D.



#20 AR-1242-5

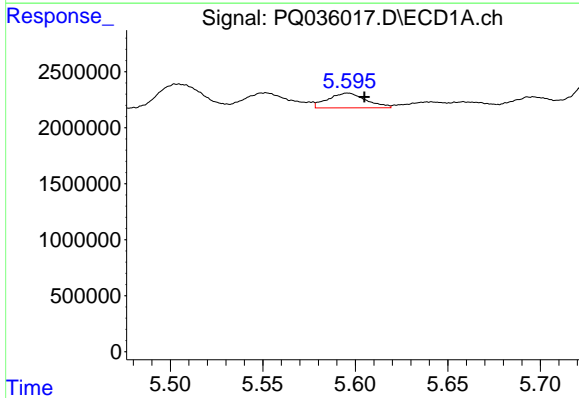
R.T.: 6.578 min
 Delta R.T.: 0.056 min
 Response: 1724506
 Conc: 21.98 ng/ml

Instrument :
 ECD_Q
 ClientSampleId :



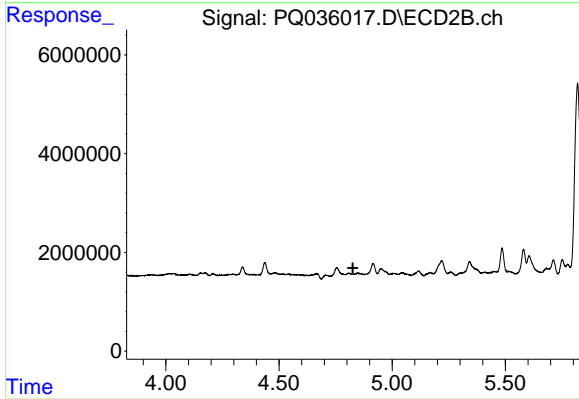
#20 AR-1242-5

R.T.: 5.605 min
 Delta R.T.: -0.017 min
 Response: 7819006
 Conc: 141.68 ng/ml



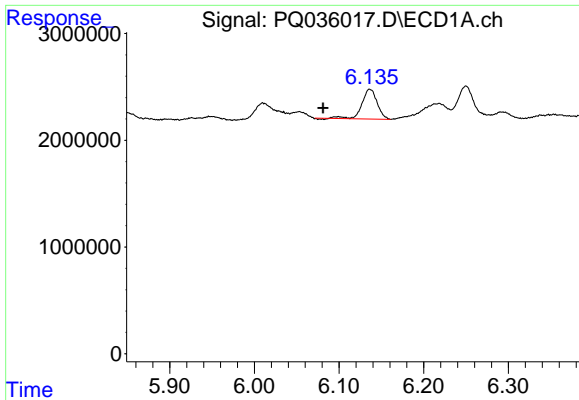
#21 AR-1248-1

R.T.: 5.596 min
 Delta R.T.: -0.009 min
 Response: 1867862
 Conc: 28.30 ng/ml



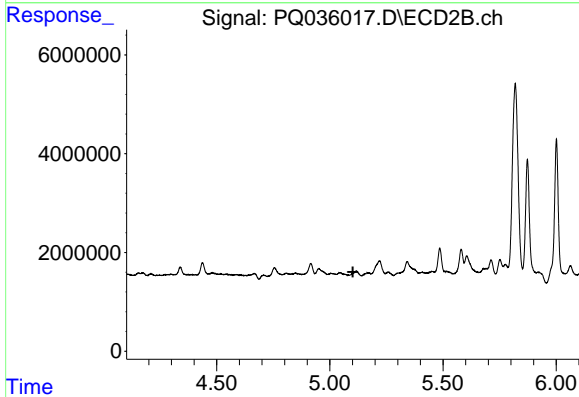
#21 AR-1248-1

R.T.: 0.000 min
 Exp R.T. : 4.827 min
 Response: 0
 Conc: N.D.

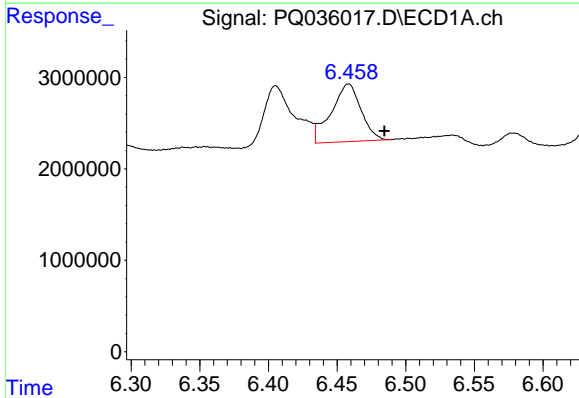


#23 AR-1248-3
 R.T.: 6.136 min
 Delta R.T.: 0.055 min
 Response: 3502805
 Conc: 33.52 ng/ml

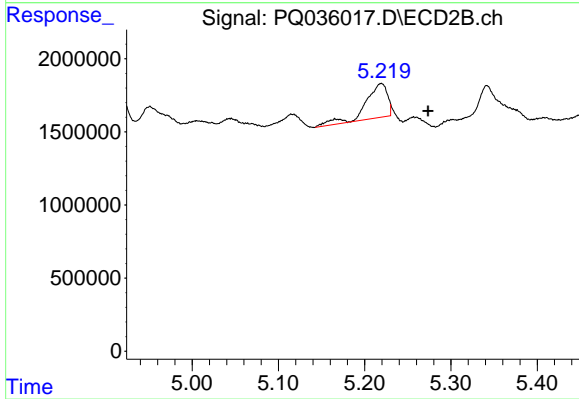
Instrument :
 ECD_Q
 ClientSampleId :



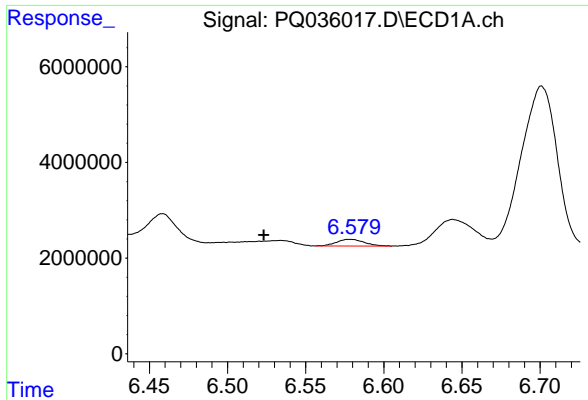
#23 AR-1248-3
 R.T.: 0.000 min
 Exp R.T. : 5.102 min
 Response: 0
 Conc: N.D.



#24 AR-1248-4
 R.T.: 6.458 min
 Delta R.T.: -0.026 min
 Response: 9564831
 Conc: 77.67 ng/ml



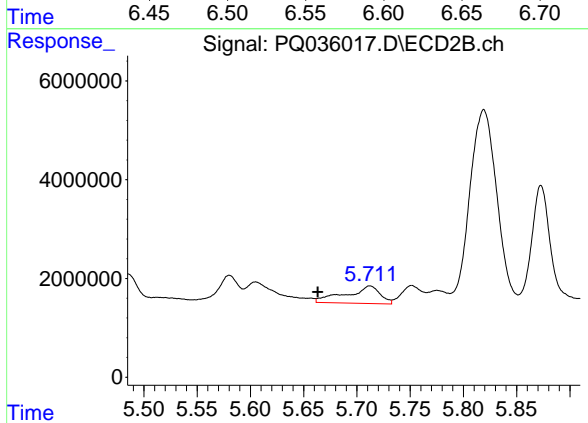
#24 AR-1248-4
 R.T.: 5.219 min
 Delta R.T.: -0.054 min
 Response: 4094357
 Conc: 59.15 ng/ml



#25 AR-1248-5

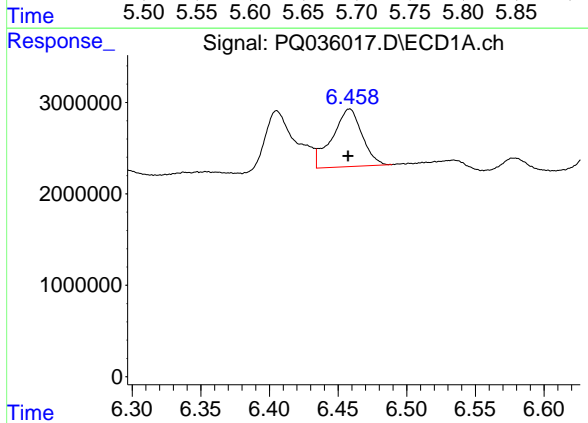
R.T.: 6.578 min
 Delta R.T.: 0.055 min
 Response: 1724506
 Conc: 14.74 ng/ml

Instrument :
 ECD_Q
 ClientSampled :



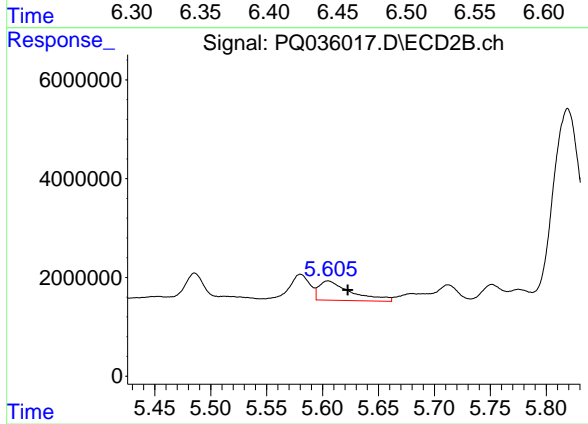
#25 AR-1248-5

R.T.: 5.712 min
 Delta R.T.: 0.049 min
 Response: 7907942
 Conc: 112.20 ng/ml



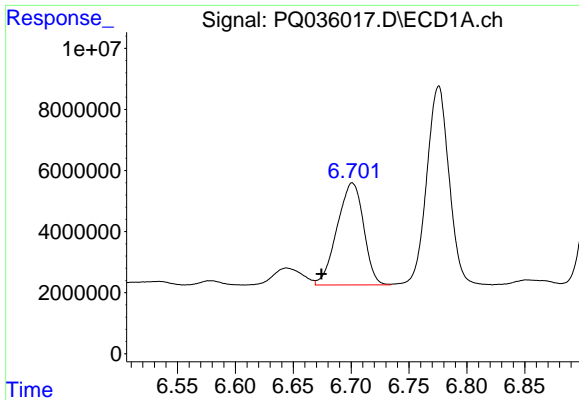
#26 AR-1254-1

R.T.: 6.458 min
 Delta R.T.: 0.001 min
 Response: 9564831
 Conc: 62.83 ng/ml



#26 AR-1254-1

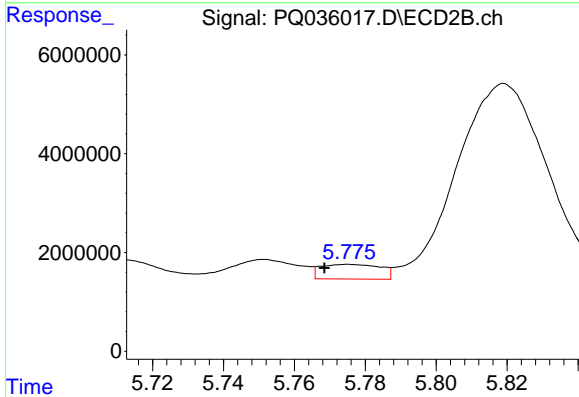
R.T.: 5.605 min
 Delta R.T.: -0.018 min
 Response: 7819006
 Conc: 58.62 ng/ml



#27 AR-1254-2

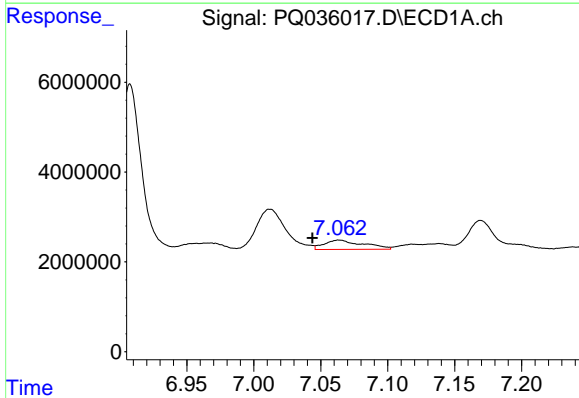
R.T.: 6.701 min
 Delta R.T.: 0.027 min
 Response: 53197205
 Conc: 224.83 ng/ml

Instrument :
 ECD_Q
 ClientSampleId :



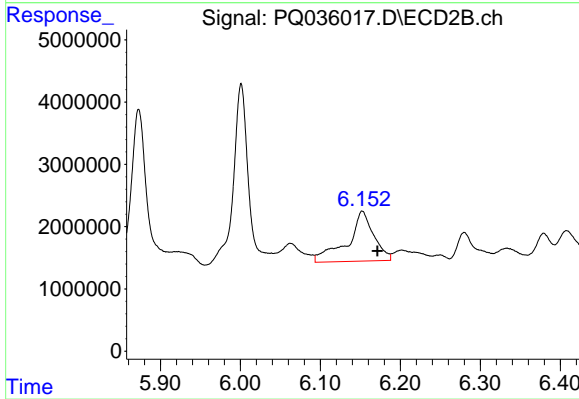
#27 AR-1254-2

R.T.: 5.775 min
 Delta R.T.: 0.007 min
 Response: 3463962
 Conc: 29.98 ng/ml



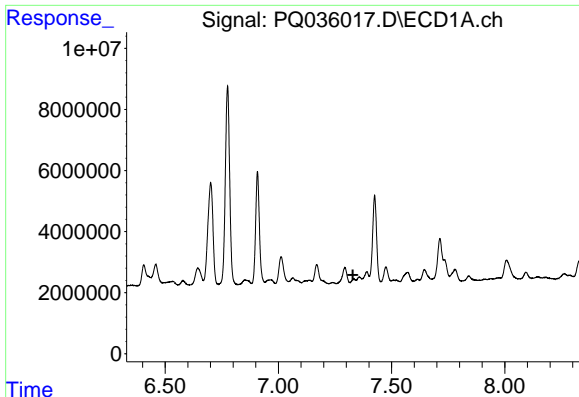
#28 AR-1254-3

R.T.: 7.064 min
 Delta R.T.: 0.020 min
 Response: 4210962
 Conc: 16.40 ng/ml



#28 AR-1254-3

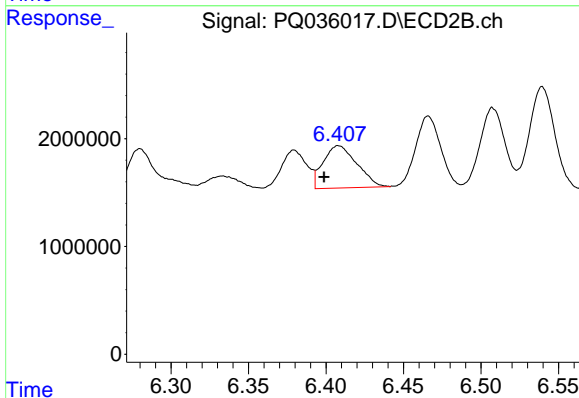
R.T.: 6.152 min
 Delta R.T.: -0.019 min
 Response: 18450943
 Conc: 95.57 ng/ml



#29 AR-1254-4

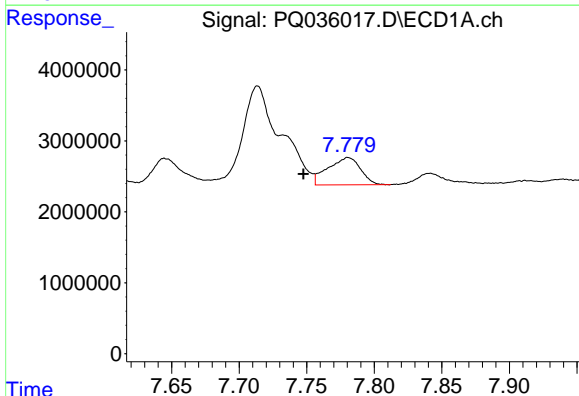
R.T.: 7.333 min
 Delta R.T.: 0.003 min
 Response: -3331658
 Conc: N.D.

Instrument :
 ECD_Q
 ClientSampleId :



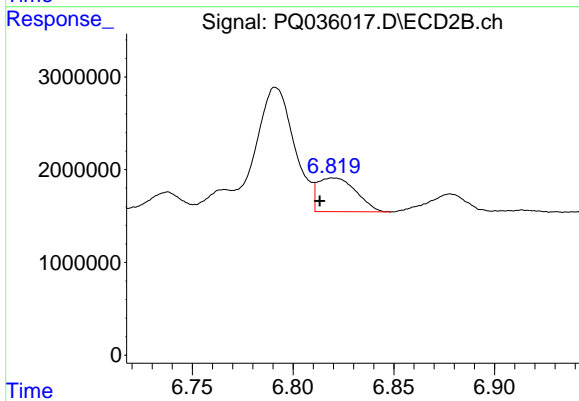
#29 AR-1254-4

R.T.: 6.408 min
 Delta R.T.: 0.009 min
 Response: 5954556
 Conc: 49.48 ng/ml



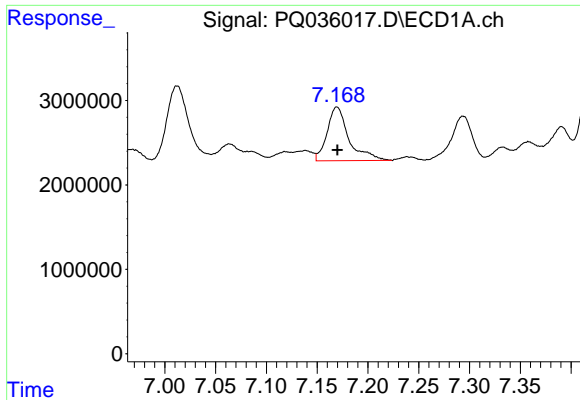
#30 AR-1254-5

R.T.: 7.781 min
 Delta R.T.: 0.033 min
 Response: 6489941
 Conc: 33.09 ng/ml



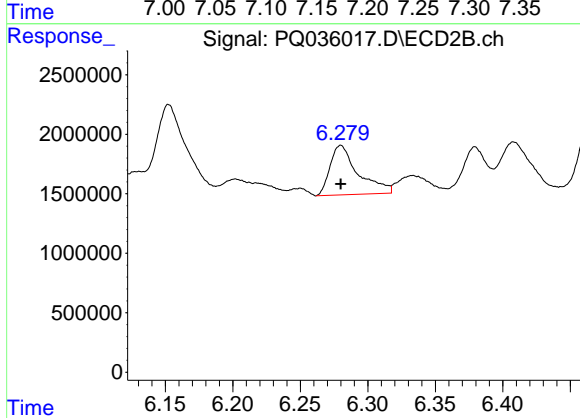
#30 AR-1254-5

R.T.: 6.820 min
 Delta R.T.: 0.007 min
 Response: 4823500
 Conc: 29.62 ng/ml

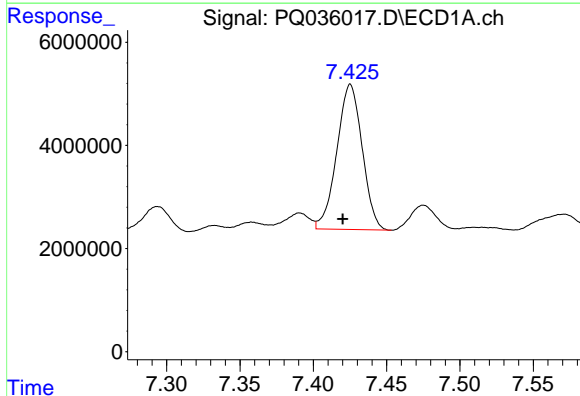


#31 AR-1260-1
 R.T.: 7.169 min
 Delta R.T.: 0.000 min
 Response: 9463136
 Conc: 51.32 ng/ml

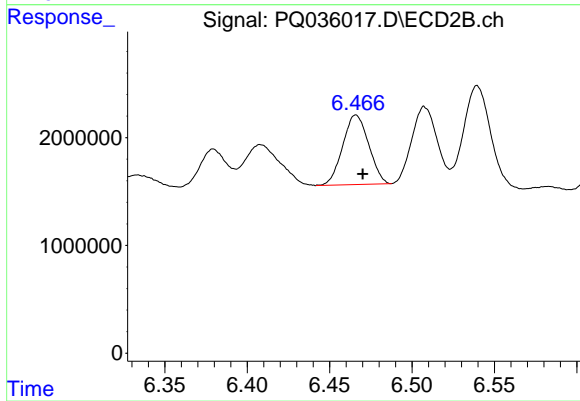
Instrument :
 ECD_Q
 ClientSampled :



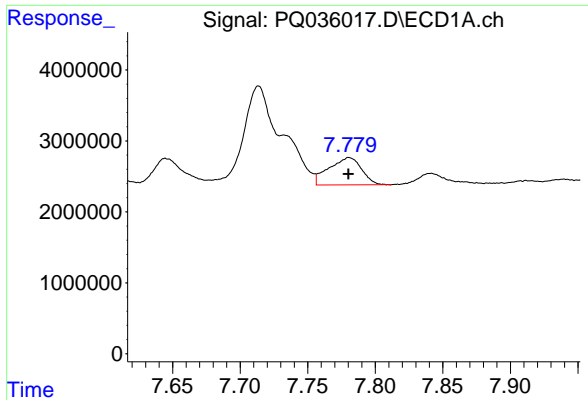
#31 AR-1260-1
 R.T.: 6.280 min
 Delta R.T.: 0.000 min
 Response: 6035267
 Conc: 47.98 ng/ml



#32 AR-1260-2
 R.T.: 7.425 min
 Delta R.T.: 0.005 min
 Response: 33857292
 Conc: 155.82 ng/ml



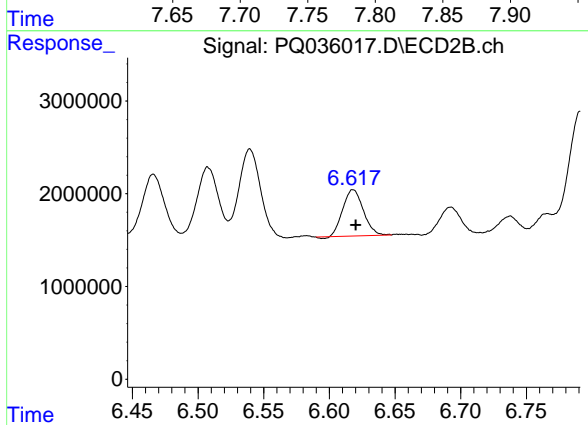
#32 AR-1260-2
 R.T.: 6.466 min
 Delta R.T.: -0.004 min
 Response: 7067316
 Conc: 46.80 ng/ml



#33 AR-1260-3

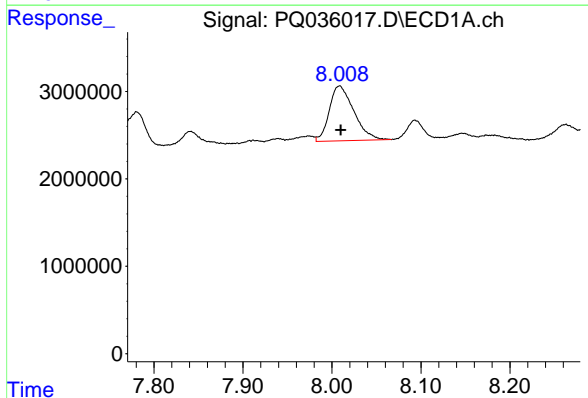
R.T.: 7.781 min
Delta R.T.: 0.000 min
Response: 6489941
Conc: 48.45 ng/ml

Instrument :
ECD_Q
ClientSampleId :



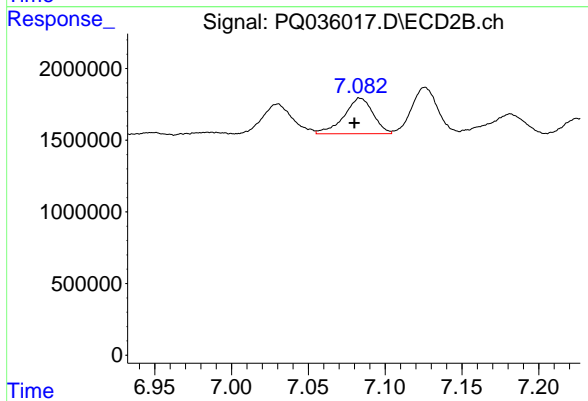
#33 AR-1260-3

R.T.: 6.618 min
Delta R.T.: -0.002 min
Response: 5395236
Conc: 38.61 ng/ml



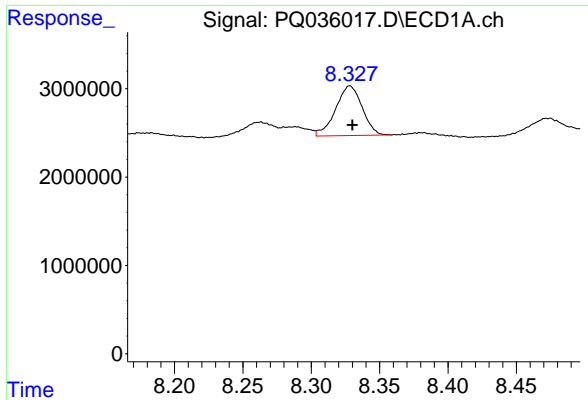
#34 AR-1260-4

R.T.: 8.009 min
Delta R.T.: -0.001 min
Response: 12022039
Conc: 72.94 ng/ml



#34 AR-1260-4

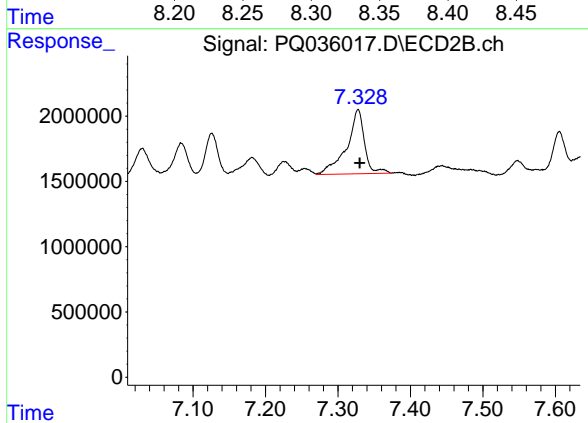
R.T.: 7.084 min
Delta R.T.: 0.004 min
Response: 3290180
Conc: 35.43 ng/ml



#35 AR-1260-5

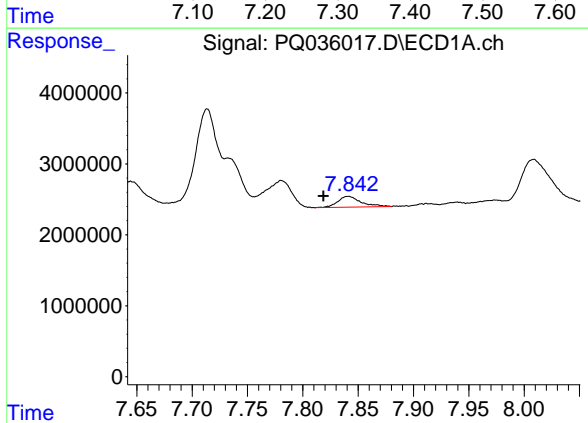
R.T.: 8.328 min
 Delta R.T.: -0.002 min
 Response: 7590259
 Conc: 25.46 ng/ml

Instrument :
 ECD_Q
 ClientSampleId :



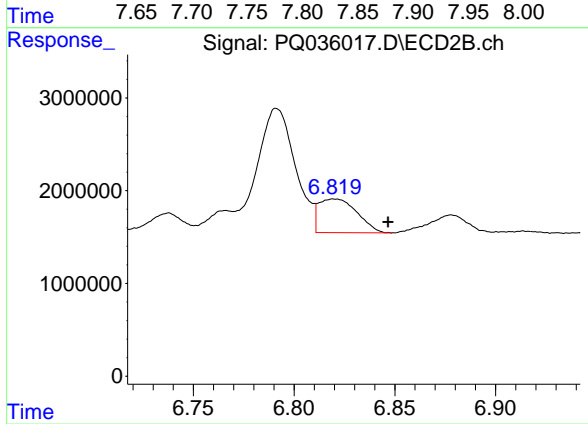
#35 AR-1260-5

R.T.: 7.328 min
 Delta R.T.: -0.002 min
 Response: 8393674
 Conc: 37.41 ng/ml



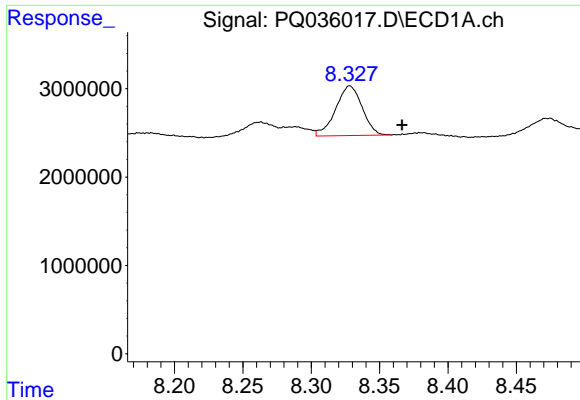
#36 AR-1262-1

R.T.: 7.841 min
 Delta R.T.: 0.022 min
 Response: 2220753
 Conc: 10.14 ng/ml



#36 AR-1262-1

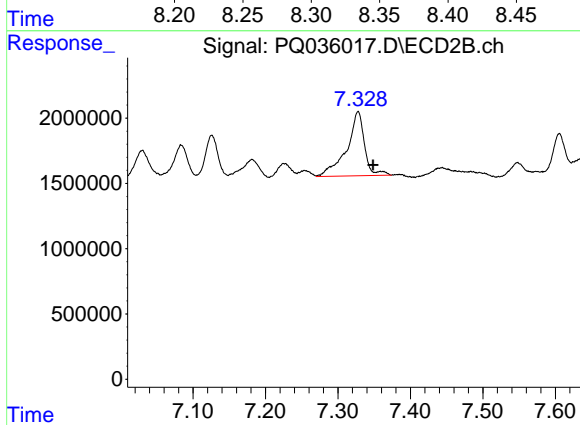
R.T.: 6.820 min
 Delta R.T.: -0.027 min
 Response: 4823500
 Conc: 31.43 ng/ml



#37 AR-1262-2

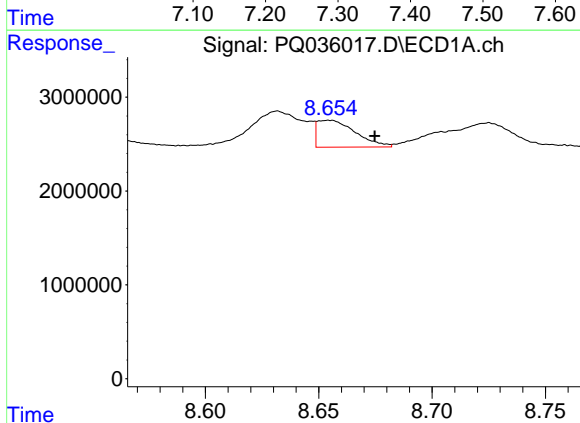
R.T.: 8.328 min
 Delta R.T.: -0.038 min
 Response: 7590259
 Conc: 20.15 ng/ml

Instrument :
 ECD_Q
 ClientSampleId :



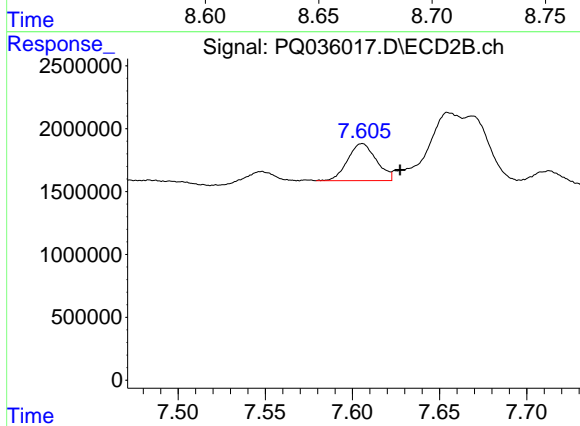
#37 AR-1262-2

R.T.: 7.328 min
 Delta R.T.: -0.021 min
 Response: 8393674
 Conc: 31.45 ng/ml



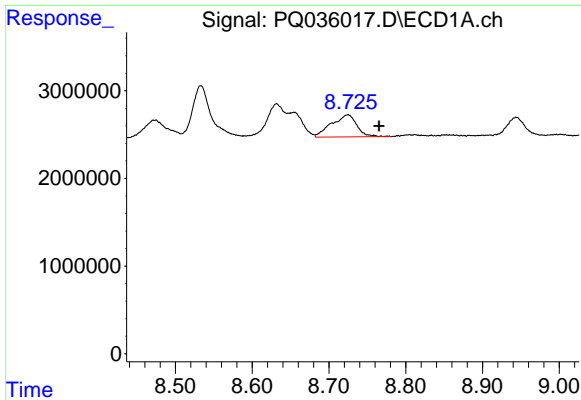
#38 AR-1262-3

R.T.: 8.655 min
 Delta R.T.: -0.020 min
 Response: 3367954
 Conc: 14.01 ng/ml



#38 AR-1262-3

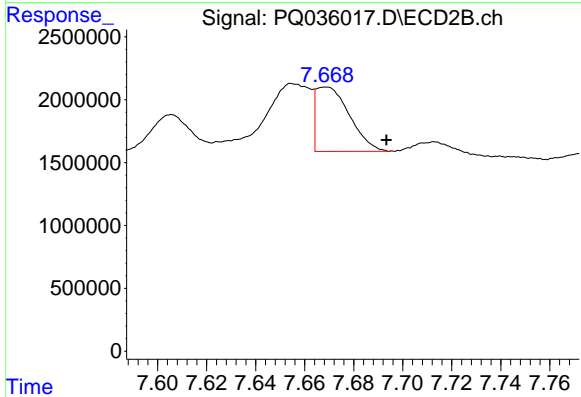
R.T.: 7.606 min
 Delta R.T.: -0.022 min
 Response: 3368870
 Conc: 32.46 ng/ml



#39 AR-1262-4

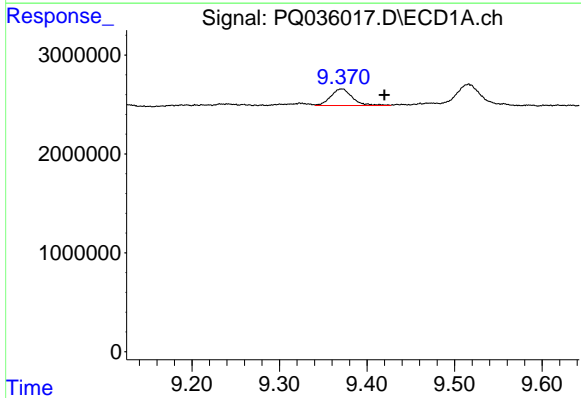
R.T.: 8.725 min
 Delta R.T.: -0.040 min
 Response: 5781982
 Conc: 32.00 ng/ml

Instrument :
 ECD_Q
 ClientSampleId :



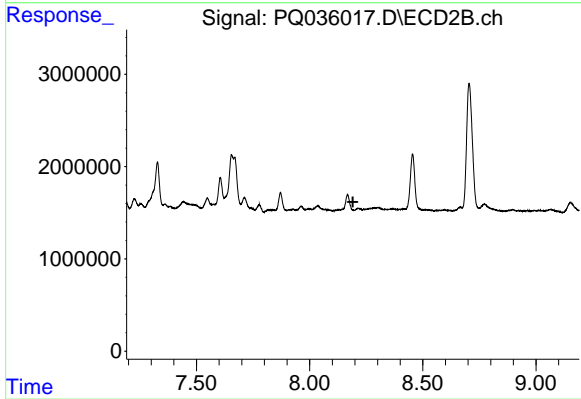
#39 AR-1262-4

R.T.: 7.669 min
 Delta R.T.: -0.025 min
 Response: 4897870
 Conc: 26.44 ng/ml



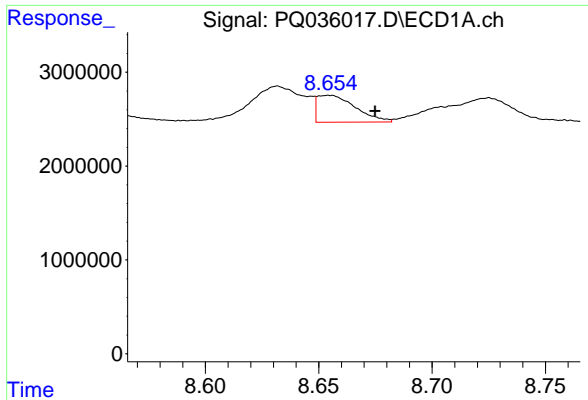
#40 AR-1262-5

R.T.: 9.371 min
 Delta R.T.: -0.049 min
 Response: 2914488
 Conc: 25.59 ng/ml



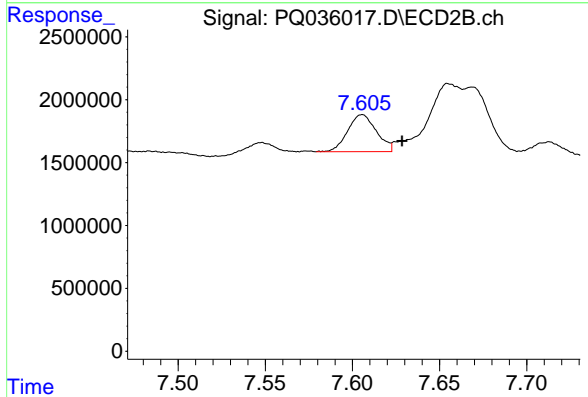
#40 AR-1262-5

R.T.: 0.000 min
 Exp R.T. : 8.191 min
 Response: 0
 Conc: N.D.

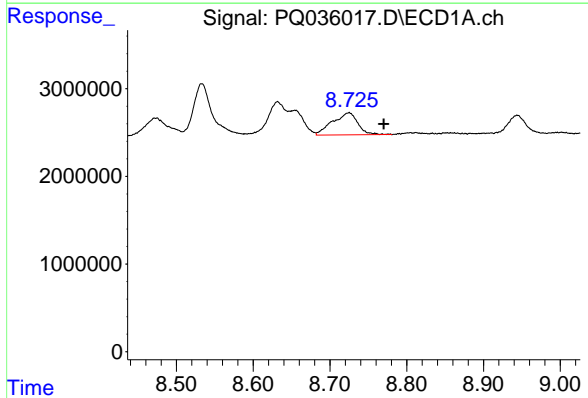


#41 AR-1268-1
 R.T.: 8.655 min
 Delta R.T.: -0.020 min
 Response: 3367954
 Conc: 6.98 ng/ml

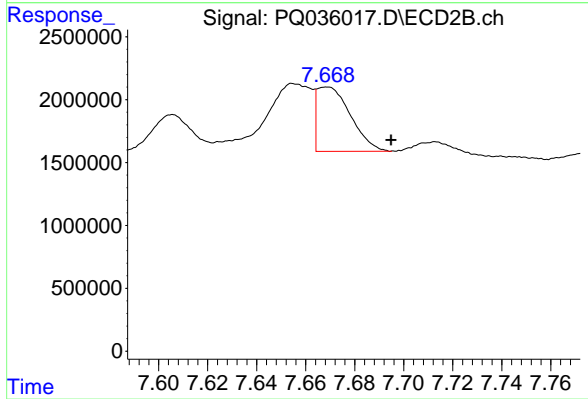
Instrument :
 ECD_Q
 ClientSampleId :



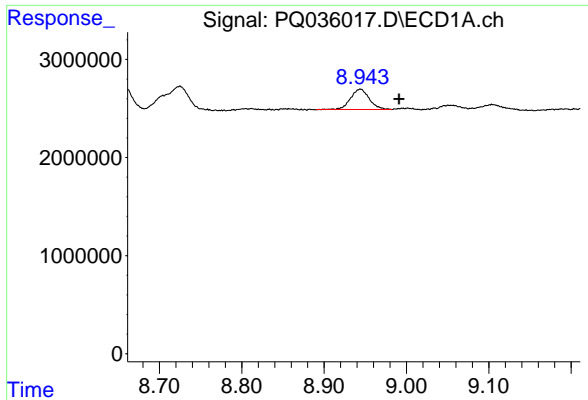
#41 AR-1268-1
 R.T.: 7.606 min
 Delta R.T.: -0.023 min
 Response: 3368870
 Conc: 10.10 ng/ml



#42 AR-1268-2
 R.T.: 8.725 min
 Delta R.T.: -0.045 min
 Response: 5781982
 Conc: 13.40 ng/ml



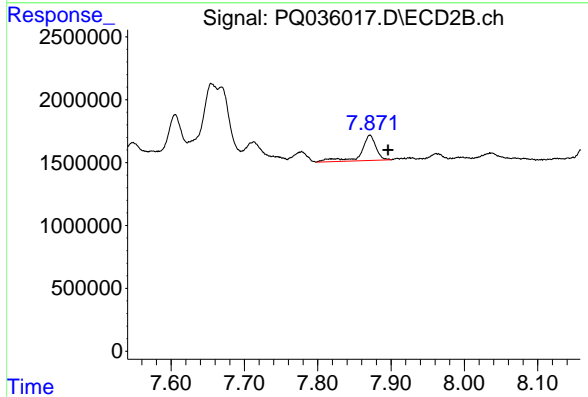
#42 AR-1268-2
 R.T.: 7.669 min
 Delta R.T.: -0.026 min
 Response: 4897870
 Conc: 16.53 ng/ml



#43 AR-1268-3

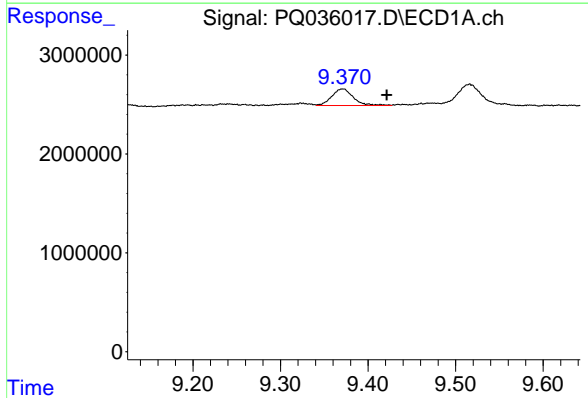
R.T.: 8.944 min
 Delta R.T.: -0.047 min
 Response: 3270712
 Conc: 8.65 ng/ml

Instrument :
 ECD_Q
 ClientSampleId :



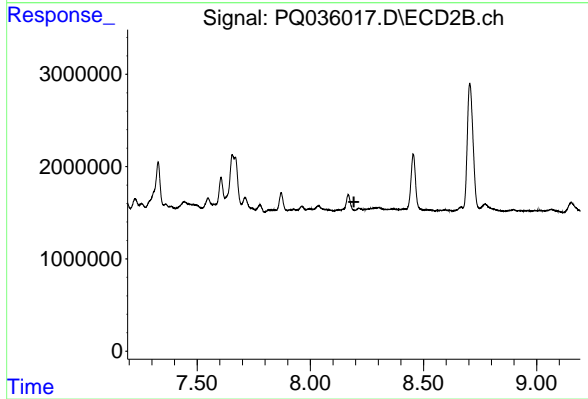
#43 AR-1268-3

R.T.: 7.871 min
 Delta R.T.: -0.025 min
 Response: 2854115
 Conc: 11.68 ng/ml



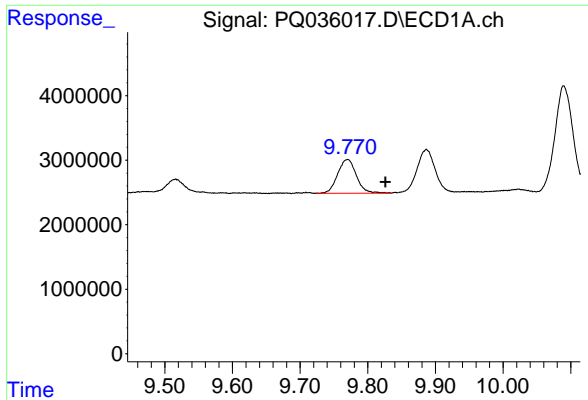
#44 AR-1268-4

R.T.: 9.371 min
 Delta R.T.: -0.050 min
 Response: 2914488
 Conc: 21.26 ng/ml



#44 AR-1268-4

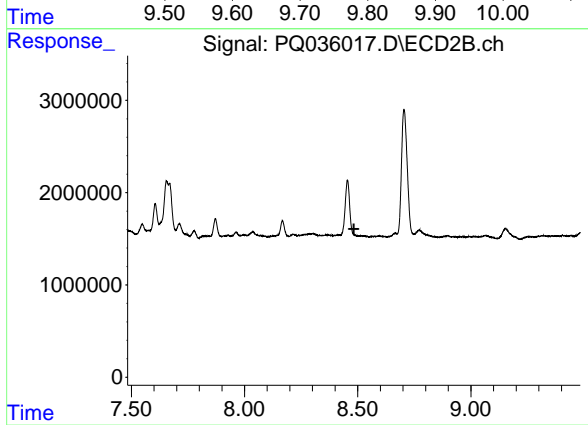
R.T.: 0.000 min
 Exp R.T. : 8.193 min
 Response: 0
 Conc: N.D.



#45 AR-1268-5

R.T.: 9.770 min
Delta R.T.: -0.056 min
Response: 10078062
Conc: 8.71 ng/ml

Instrument :
ECD_Q
ClientSampleId :



#45 AR-1268-5

R.T.: 0.000 min
Exp R.T. : 8.483 min
Response: 0
Conc: N.D.