

Data Path : Z:\pestpcbsrv\HPCHEM1\ECD_Q\Data\PQ122618\
 Data File : PQ035989.D
 Signal(s) : Signal #1: ECD1A.ch Signal #2: ECD2B.ch
 Acq On : 26 Dec 2018 17:45
 Operator : SM\SJ
 Sample : J6548-09
 Misc :
 ALS Vial : 14 Sample Multiplier: 1

Instrument :
 ECD_Q
 ClientSampleId :
 D-9

Manual Integrations
 APPROVED

Sohil
 12/27/2018 9:45:40 AM

Integration File signal 1: autoint1.e
 Integration File signal 2: autoint2.e
 Quant Time: Dec 27 03:19:54 2018
 Quant Method : Z:\pestpcbsrv\HPCHEM1\ECD_Q\Method\PQ121318.M
 Quant Title : GC EXTRACTABLES
 QLast Update : Mon Dec 24 12:28:48 2018
 Response via : Initial Calibration
 Integrator: ChemStation

Volume Inj. : 2 µl
 Signal #1 Phase : ZB-MR1 Signal #2 Phase: ZB-MR2
 Signal #1 Info : 30Mx0.32mmx 0.50µ Signal #2 Info : 30M x 0.32mm x 0.25µm

Compound	RT#1	RT#2	Resp#1	Resp#2	ng/ml	ng/ml
----------	------	------	--------	--------	-------	-------

 System Monitoring Compounds

1) SA Tetrachlo...	4.417	3.738	44617317	27300776	11.403m	12.218
2) SA Decachlor...	10.097	8.706	36290867	21527468	12.312m	12.180

Target Compounds

(f)=RT Delta > 1/2 Window (#)=Amounts differ by > 25% (m)=manual int.

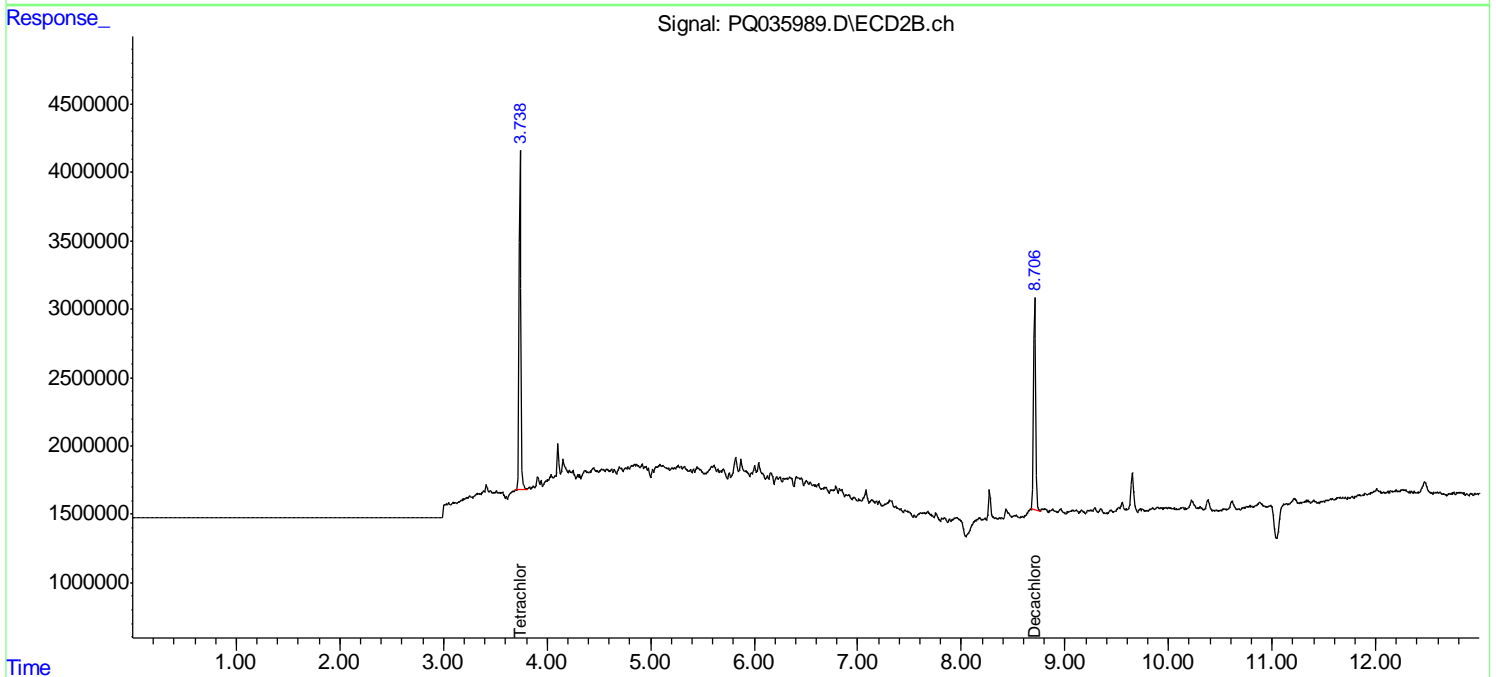
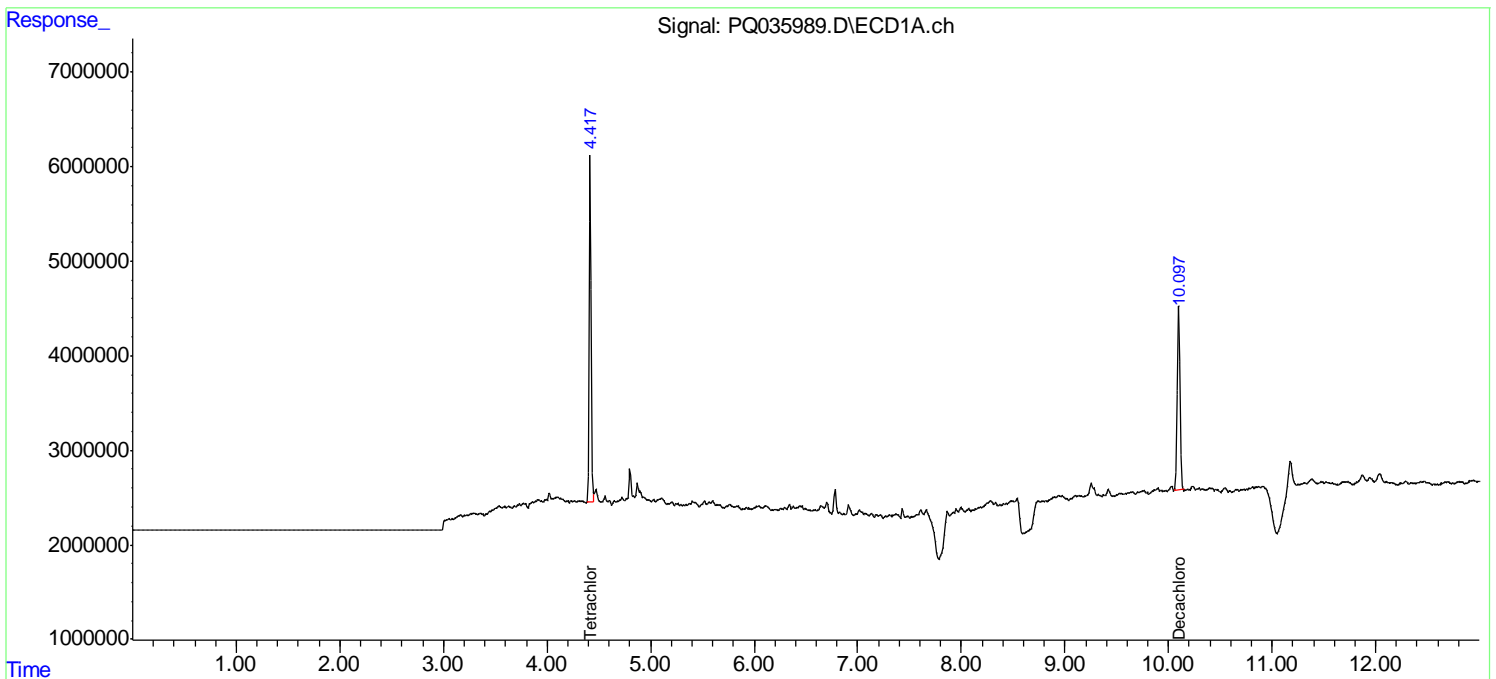
Data Path : Z:\pestpcbsrv\HPCHEM1\ECD_Q\Data\PQ122618\
 Data File : PQ035989.D
 Signal(s) : Signal #1: ECD1A.ch Signal #2: ECD2B.ch
 Acq On : 26 Dec 2018 17:45
 Operator : SM\SJ
 Sample : J6548-09
 Misc :
 ALS Vial : 14 Sample Multiplier: 1

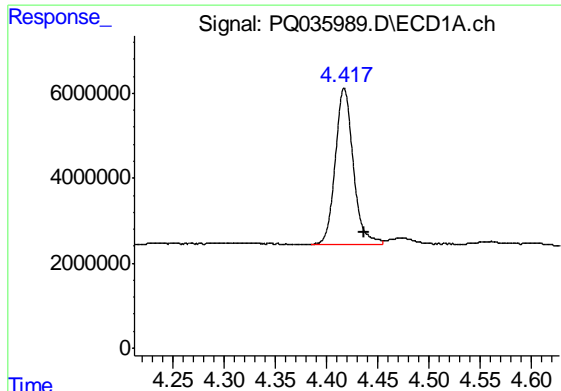
Instrument :
 ECD_Q
Client Sampled :
 D-9

Manual Integrations
APPROVED
 Sohil
 12/27/2018 9:45:40 AM

Integration File signal 1: autoint1.e
 Integration File signal 2: autoint2.e
 Quant Time: Dec 27 03:19:54 2018
 Quant Method : Z:\pestpcbsrv\HPCHEM1\ECD_Q\Method\PQ121318.M
 Quant Title : GC EXTRACTABLES
 QLast Update : Mon Dec 24 12:28:48 2018
 Response via : Initial Calibration
 Integrator: ChemStation

Volume Inj. : 2 µl
 Signal #1 Phase : ZB-MR1 Signal #2 Phase: ZB-MR2
 Signal #1 Info : 30Mx0.32mmx 0.50µ Signal #2 Info : 30M x 0.32mm x 0.25µm





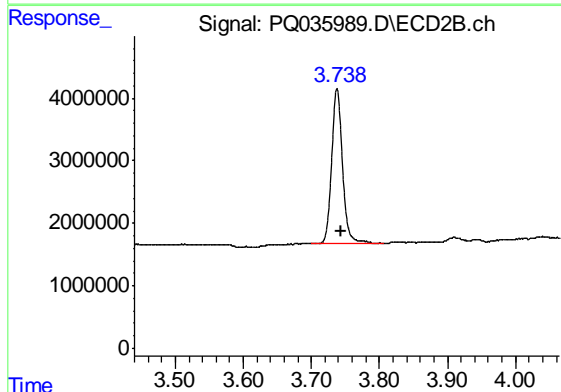
#1 Tetrachloro-m-xylene

R.T.: 4.417 min
 Delta R.T.: -0.020 min
 Response: 44617317
 Conc: 11.40 ng/ml m

Instrument :
 ECD_Q
 ClientSampled :
 D-9

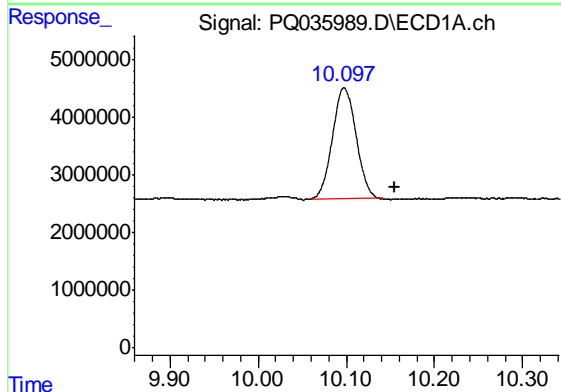
Manual Integrations
 APPROVED

Sohil
 12/27/2018 9:45:40 AM



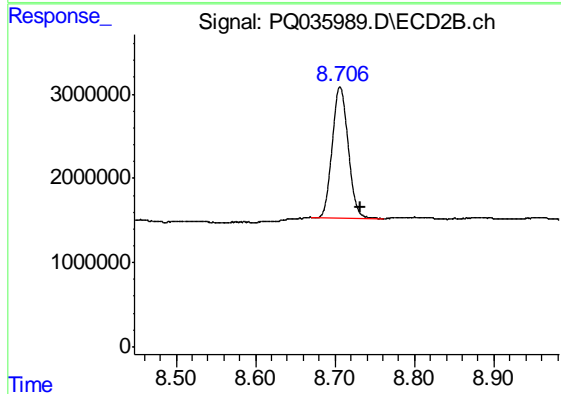
#1 Tetrachloro-m-xylene

R.T.: 3.738 min
 Delta R.T.: -0.006 min
 Response: 27300776
 Conc: 12.22 ng/ml



#2 Decachlorobiphenyl

R.T.: 10.097 min
 Delta R.T.: -0.058 min
 Response: 36290867
 Conc: 12.31 ng/ml m



#2 Decachlorobiphenyl

R.T.: 8.706 min
 Delta R.T.: -0.026 min
 Response: 21527468
 Conc: 12.18 ng/ml