

Data Path : Z:\pestpcbsrv\HPCHEM1\ECD_Q\Data\PQ122618\
 Data File : PQ035993.D
 Signal(s) : Signal #1: ECD1A.ch Signal #2: ECD2B.ch
 Acq On : 26 Dec 2018 18:47
 Operator : SM\SJ
 Sample : J6548-13
 Misc :
 ALS Vial : 18 Sample Multiplier: 1

Instrument :
 ECD_Q
 ClientSampleId :
 D-13

Manual Integrations
 APPROVED

Sohil
 12/27/2018 9:45:48 AM

Integration File signal 1: autoint1.e
 Integration File signal 2: autoint2.e
 Quant Time: Dec 27 03:21:36 2018
 Quant Method : Z:\pestpcbsrv\HPCHEM1\ECD_Q\Method\PQ121318.M
 Quant Title : GC EXTRACTABLES
 QLast Update : Mon Dec 24 12:28:48 2018
 Response via : Initial Calibration
 Integrator: ChemStation

Volume Inj. : 2 µl
 Signal #1 Phase : ZB-MR1 Signal #2 Phase: ZB-MR2
 Signal #1 Info : 30Mx0.32mmx 0.50µ Signal #2 Info : 30M x 0.32mm x 0.25µm

Compound	RT#1	RT#2	Resp#1	Resp#2	ng/ml	ng/ml
----------	------	------	--------	--------	-------	-------

 System Monitoring Compounds

1) SA Tetrachlo...	4.415	3.736	55234541	33579116	14.117m	15.028
2) SA Decachlor...	10.095	8.706	47473253	27045569	16.106m	15.302

Target Compounds

(f)=RT Delta > 1/2 Window (#)=Amounts differ by > 25% (m)=manual int.

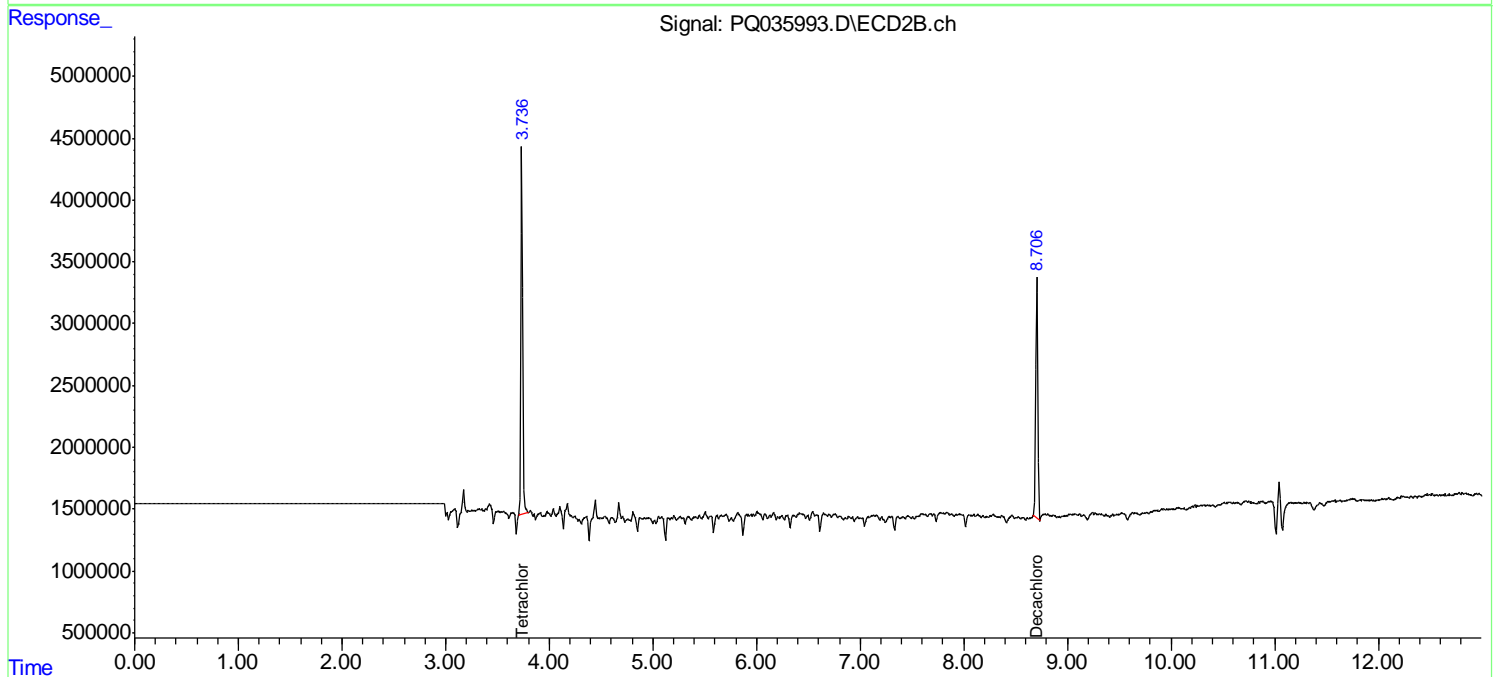
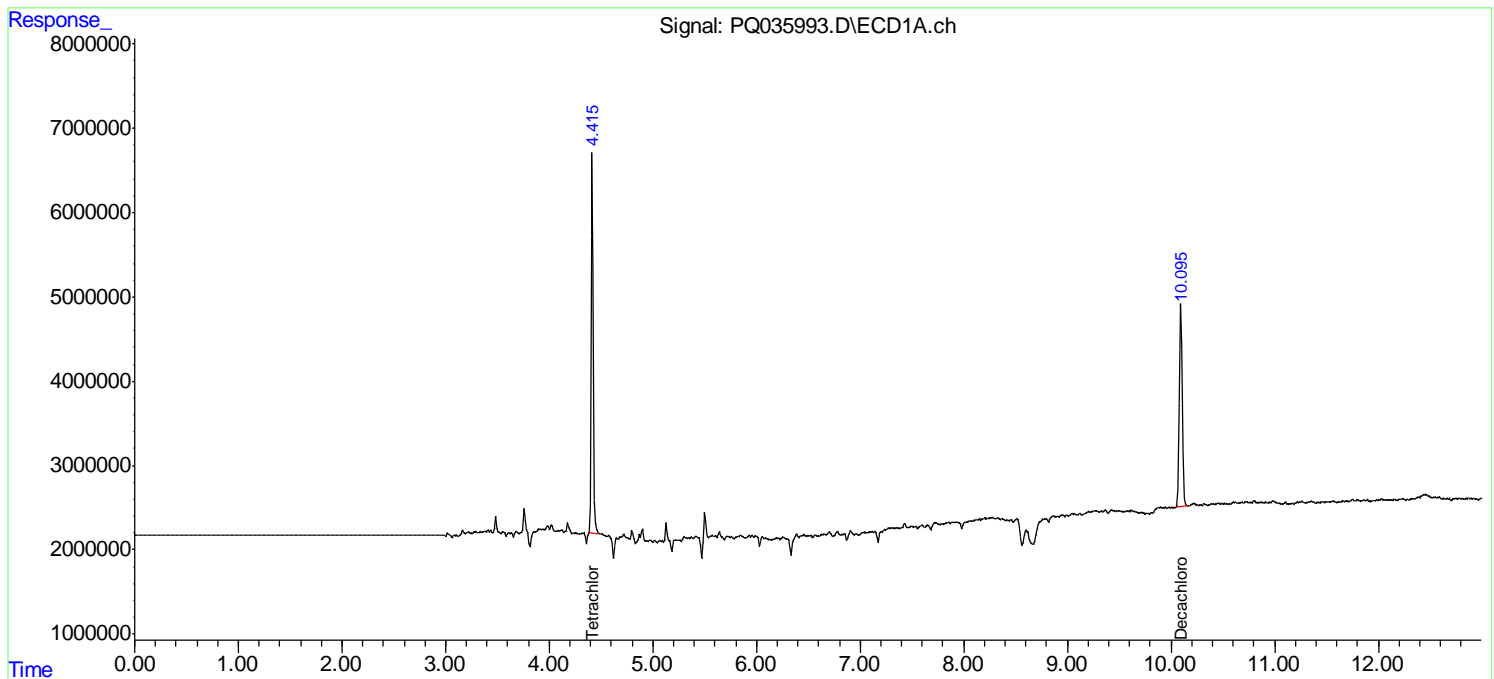
Data Path : Z:\pestpcbsrv\HPCHEM1\ECD_Q\Data\PQ122618\
Data File : PQ035993.D
Signal(s) : Signal #1: ECD1A.ch Signal #2: ECD2B.ch
Acq On : 26 Dec 2018 18:47
Operator : SM\SJ
Sample : J6548-13
Misc :
ALS Vial : 18 Sample Multiplier: 1

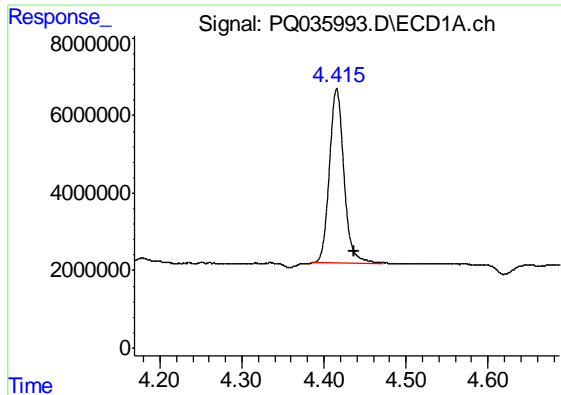
Instrument :
ECD_Q
ClientSampled :
D-13

Manual Integrations
APPROVED
Sohil
12/27/2018 9:45:48 AM

Integration File signal 1: autoint1.e
Integration File signal 2: autoint2.e
Quant Time: Dec 27 03:21:36 2018
Quant Method : Z:\pestpcbsrv\HPCHEM1\ECD_Q\Method\PQ121318.M
Quant Title : GC EXTRACTABLES
QLast Update : Mon Dec 24 12:28:48 2018
Response via : Initial Calibration
Integrator: ChemStation

Volume Inj. : 2 µl
Signal #1 Phase : ZB-MR1 Signal #2 Phase: ZB-MR2
Signal #1 Info : 30Mx0.32mmx 0.50µ Signal #2 Info : 30M x 0.32mm x 0.25µm

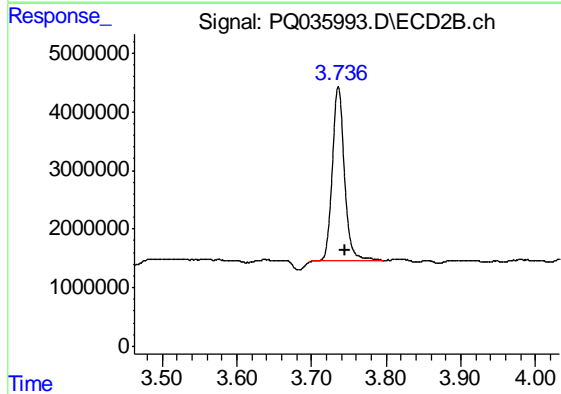




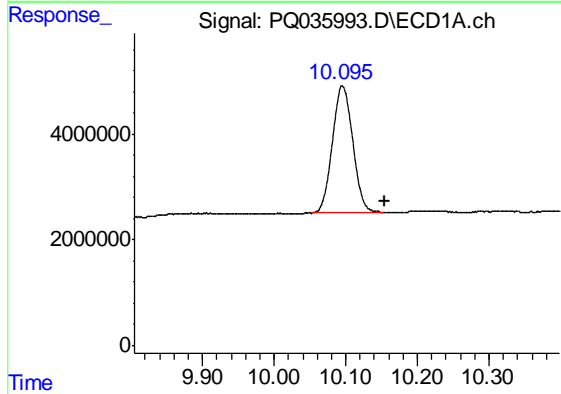
#1 Tetrachloro-m-xylene
 R.T.: 4.415 min
 Delta R.T.: -0.022 min
 Response: 55234541
 Conc: 14.12 ng/ml m

Instrument :
 ECD_Q
 ClientSampled :
 D-13

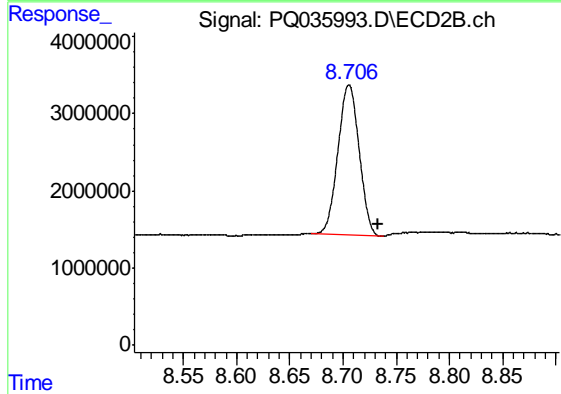
Manual Integrations
 APPROVED
 Sohil
 12/27/2018 9:45:48 AM



#1 Tetrachloro-m-xylene
 R.T.: 3.736 min
 Delta R.T.: -0.008 min
 Response: 33579116
 Conc: 15.03 ng/ml



#2 Decachlorobiphenyl
 R.T.: 10.095 min
 Delta R.T.: -0.060 min
 Response: 47473253
 Conc: 16.11 ng/ml m



#2 Decachlorobiphenyl
 R.T.: 8.706 min
 Delta R.T.: -0.027 min
 Response: 27045569
 Conc: 15.30 ng/ml