

Data Path : Z:\pestpcbsrv\HPCHEM1\ECD_Q\Data\PQ122818\
 Data File : PQ036092.D
 Signal(s) : Signal #1: ECD1A.ch Signal #2: ECD2B.ch
 Acq On : 28 Dec 2018 12:38
 Operator : SM\SJ
 Sample : J6564-07 10X
 Misc :
 ALS Vial : 9 Sample Multiplier: 1

Instrument :
 ECD_Q
 ClientSampled :

Integration File signal 1: autoint1.e
 Integration File signal 2: autoint2.e
 Quant Time: Dec 29 02:31:47 2018
 Quant Method : Z:\pestpcbsrv\HPCHEM1\ECD_Q\Method\PQ121318.M
 Quant Title : GC EXTRACTABLES
 QLast Update : Mon Dec 24 12:28:48 2018
 Response via : Initial Calibration
 Integrator: ChemStation

Volume Inj. : 2 µl
 Signal #1 Phase : ZB-MR1 Signal #2 Phase: ZB-MR2
 Signal #1 Info : 30Mx0.32mmx 0.50µ Signal #2 Info : 30M x 0.32mm x 0.25µm

Compound	RT#1	RT#2	Resp#1	Resp#2	ng/ml	ng/ml
System Monitoring Compounds						
1) SA Tetrachlo...	4.404	3.728	6732883	3890553	1.721	1.741
2) SA Decachlor...	10.078	8.698	5582876	2957455	1.894	1.673
Target Compounds						
3) L1 AR-1016-1	5.567	0.000	1413355	0	11.046	N.D. #
4) L1 AR-1016-2	5.590	0.000	2236909	0	11.663	N.D. #
5) L1 AR-1016-3	5.590	5.038	2236909	7810706	19.545	133.746 #
6) L1 AR-1016-4	0.000	5.038	0	7810706	N.D.	166.112 #
7) L1 AR-1016-5	6.042	5.250	7870549	4273321	86.456	69.612
10) L2 AR-1221-3	4.862	4.147	1280223	1913214	15.384	39.382 #
11) L3 AR-1232-1	4.862	4.147	1280223	1913214	17.605	43.451 #
13) L3 AR-1232-3	5.590	5.038	2236909	7810706	27.356	305.685 #
14) L3 AR-1232-4	5.837	5.079	12660095	1919498	316.167	84.128 #
15) L3 AR-1232-5	5.882	5.250	2984946	4273321	94.256	171.088 #
16) L4 AR-1242-1	5.590	0.000	2236909	0	23.185	N.D. #
17) L4 AR-1242-2	5.590	0.000	2236909	0	15.418	N.D. #
18) L4 AR-1242-3	0.000	5.038	0	7810706	N.D.	173.435 #
19) L4 AR-1242-4	5.837	5.079	12660095	1919498	183.002	43.348 #
20) L4 AR-1242-5	6.485	5.639	12890666	4306456	164.311	78.030 #
21) L5 AR-1248-1	5.590	0.000	2236909	0	33.890	N.D. #
22) L5 AR-1248-2	5.882	5.079	2984946	1919498	31.492	35.367
23) L5 AR-1248-3	6.042	5.079	7870549	1919498	75.323	34.398 #
24) L5 AR-1248-4	6.485	5.250	12890666	4273321	104.676	61.731 #
25) L5 AR-1248-5	6.485	5.687	12890666	9521183	110.183	135.086
26) L6 AR-1254-1	6.444	5.639	15979538	4306456	104.968	32.285 #
27) L6 AR-1254-2	6.683	5.745	20798392	21969360	87.902	190.130 #
28) L6 AR-1254-3	7.055	6.195	8538155	5872522	33.254	30.418
29) L6 AR-1254-4	7.347	6.400	7898078	6514359	43.560	54.131
30) L6 AR-1254-5	7.735	6.788	10210869	52676601	52.056	323.442 #
31) L7 AR-1260-1	7.161	6.273	34015554	26922288	184.464	214.030
32) L7 AR-1260-2	7.417	6.460	35329944	21073609	162.598	139.548
33) L7 AR-1260-3	7.769	6.613	9872841	21409315	73.699	153.214 #
34) L7 AR-1260-4	7.998	7.080	30037856	3547131	182.257	38.200 #
35) L7 AR-1260-5	8.321	7.322	15091648	12960108	50.615	57.755
36) L8 AR-1262-1	7.834	6.858	3219820	6053403	14.697	39.444 #
37) L8 AR-1262-2	8.321	7.357	15091648	1991347	40.061	7.462 #
38) L8 AR-1262-3	8.699	7.667	3564474	8094892	14.828	77.998 #
39) L8 AR-1262-4	8.699	7.667	3564474	8094892	19.729	43.699 #
40) L8 AR-1262-5	9.360	8.164	578863	1179559	5.083	15.891 #
41) L9 AR-1268-1	8.699	7.667	3564474	8094892	7.388	24.275 #
42) L9 AR-1268-2	0.000	7.667	0	8094892	N.D.	27.315 #
43) L9 AR-1268-3	8.990	7.867	1959491	1338160	5.185	5.475
44) L9 AR-1268-4	9.360	8.164	578863	1179559	4.222	12.644 #

Data Path : Z:\pestpcbsrv\HPCHEM1\ECD_Q\Data\PQ122818\
 Data File : PQ036092.D
 Signal(s) : Signal #1: ECD1A.ch Signal #2: ECD2B.ch
 Acq On : 28 Dec 2018 12:38
 Operator : SM\SJ
 Sample : J6564-07 10X
 Misc :
 ALS Vial : 9 Sample Multiplier: 1

Instrument :
 ECD_Q
 ClientSampleId :

Integration File signal 1: autoint1.e
 Integration File signal 2: autoint2.e
 Quant Time: Dec 29 02:31:47 2018
 Quant Method : Z:\pestpcbsrv\HPCHEM1\ECD_Q\Method\PQ121318.M
 Quant Title : GC EXTRACTABLES
 QLast Update : Mon Dec 24 12:28:48 2018
 Response via : Initial Calibration
 Integrator: ChemStation

Volume Inj. : 2 µl
 Signal #1 Phase : ZB-MR1 Signal #2 Phase: ZB-MR2
 Signal #1 Info : 30Mx0.32mmx 0.50µ Signal #2 Info : 30M x 0.32mm x 0.25µm

Compound	RT#1	RT#2	Resp#1	Resp#2	ng/ml	ng/ml

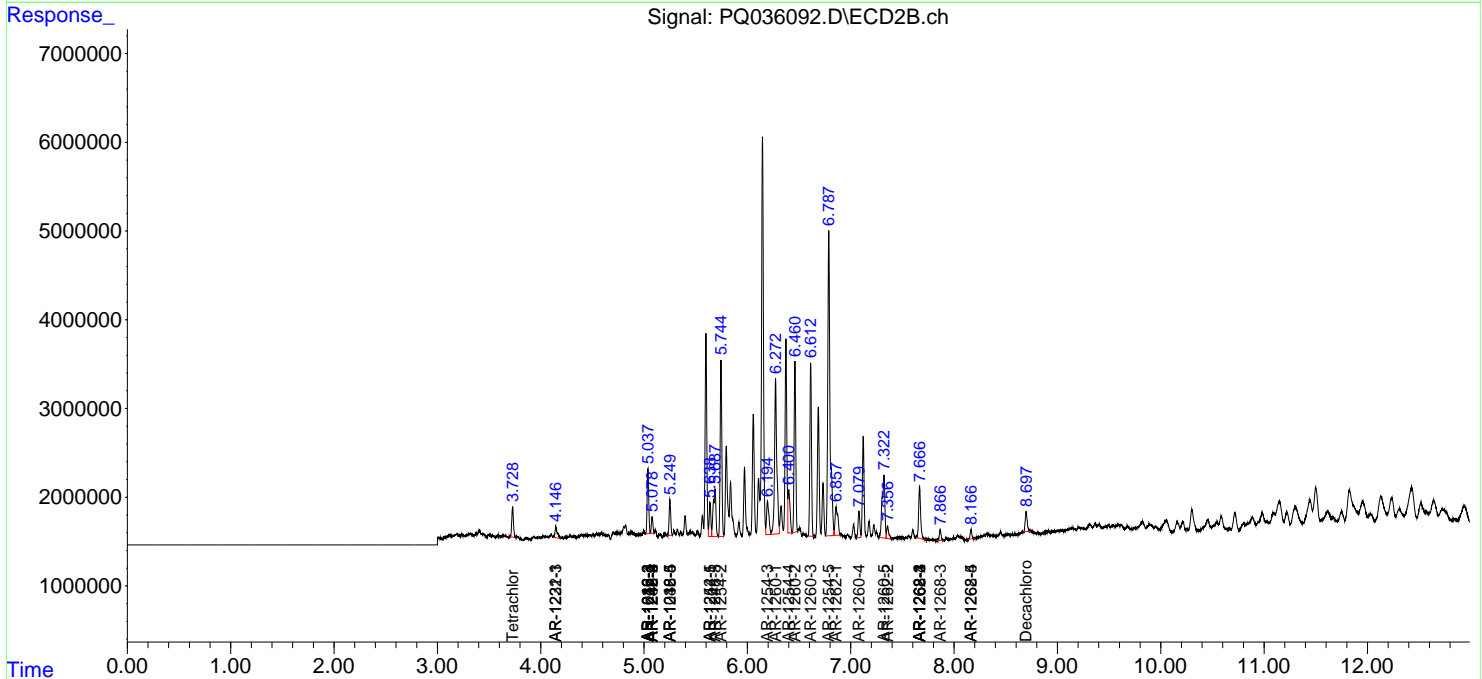
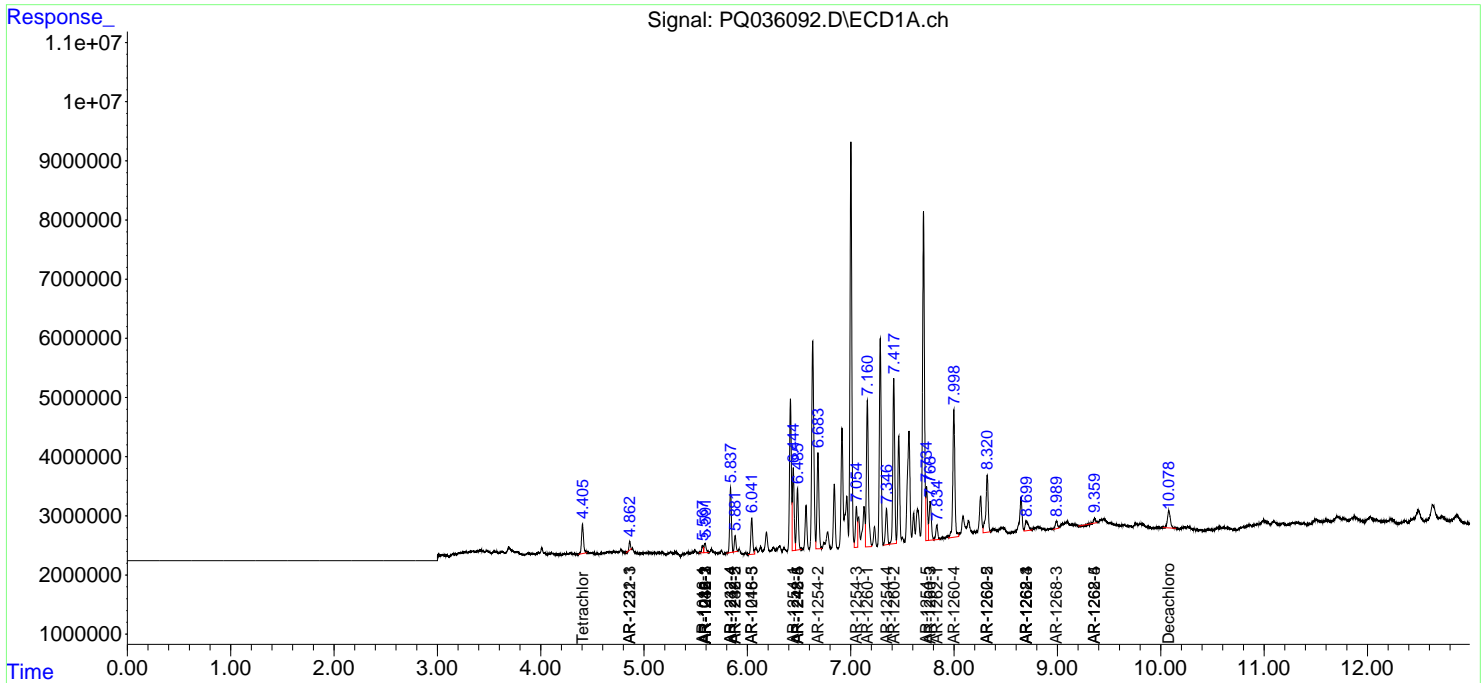
(f)=RT Delta > 1/2 Window (#)=Amounts differ by > 25% (m)=manual int.

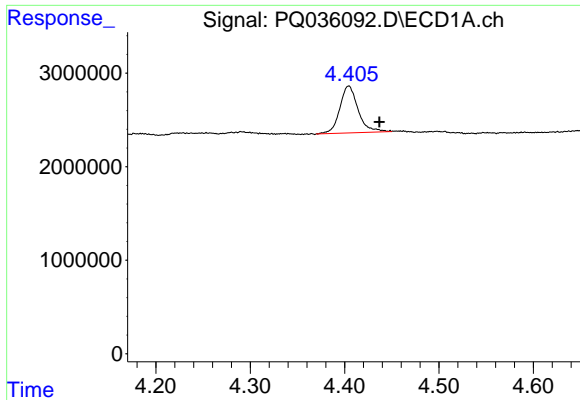
Data Path : Z:\pestpcbsrv\HPCHEM1\ECD_Q\Data\PQ122818\
 Data File : PQ036092.D
 Signal(s) : Signal #1: ECD1A.ch Signal #2: ECD2B.ch
 Acq On : 28 Dec 2018 12:38
 Operator : SM\SJ
 Sample : J6564-07 10X
 Misc :
 ALS Vial : 9 Sample Multiplier: 1

Instrument :
 ECD_Q
 ClientSampled :

Integration File signal 1: autoint1.e
 Integration File signal 2: autoint2.e
 Quant Time: Dec 29 02:31:47 2018
 Quant Method : Z:\pestpcbsrv\HPCHEM1\ECD_Q\Method\PQ121318.M
 Quant Title : GC EXTRACTABLES
 QLast Update : Mon Dec 24 12:28:48 2018
 Response via : Initial Calibration
 Integrator: ChemStation

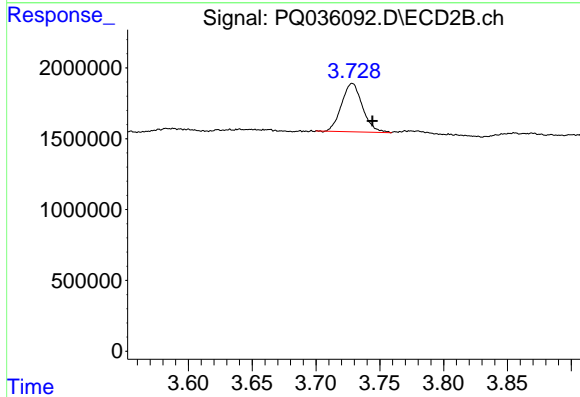
Volume Inj. : 2 µl
 Signal #1 Phase : ZB-MR1 Signal #2 Phase: ZB-MR2
 Signal #1 Info : 30Mx0.32mmx 0.50µ Signal #2 Info : 30M x 0.32mm x 0.25µm



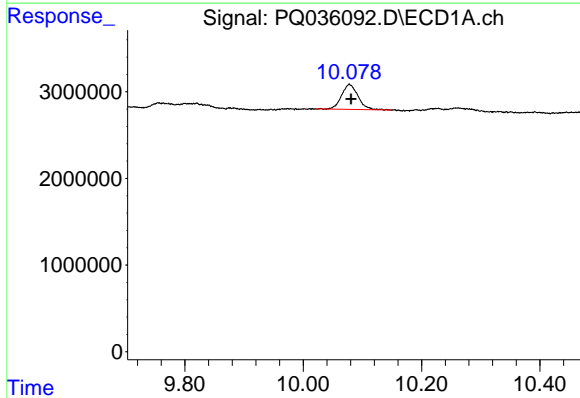


#1 Tetrachloro-m-xylene
 R.T.: 4.404 min
 Delta R.T.: -0.033 min
 Response: 6732883
 Conc: 1.72 ng/ml

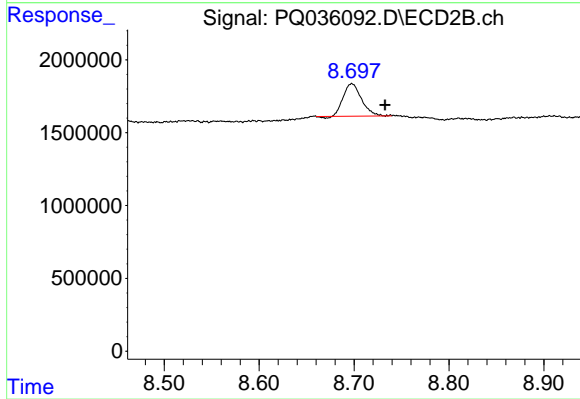
Instrument :
 ECD_Q
 ClientSampleId :



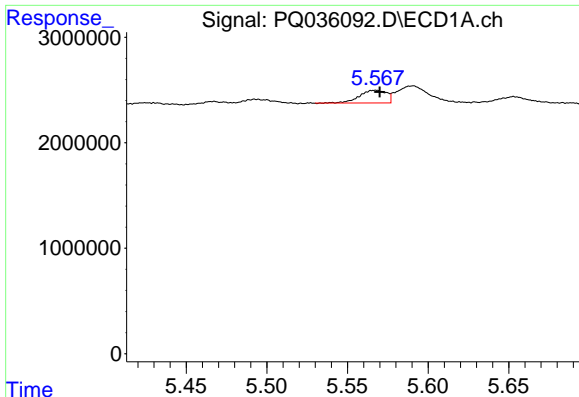
#1 Tetrachloro-m-xylene
 R.T.: 3.728 min
 Delta R.T.: -0.016 min
 Response: 3890553
 Conc: 1.74 ng/ml



#2 Decachlorobiphenyl
 R.T.: 10.078 min
 Delta R.T.: -0.003 min
 Response: 5582876
 Conc: 1.89 ng/ml



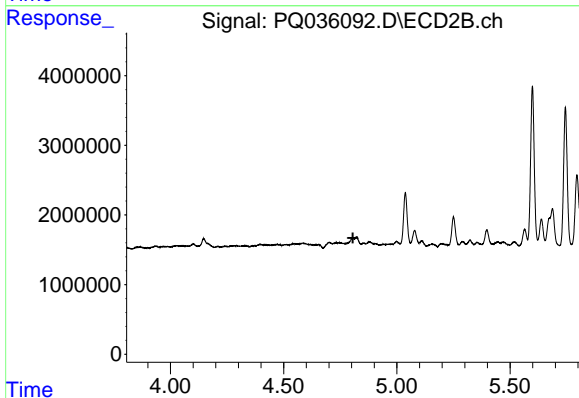
#2 Decachlorobiphenyl
 R.T.: 8.698 min
 Delta R.T.: -0.035 min
 Response: 2957455
 Conc: 1.67 ng/ml



#3 AR-1016-1

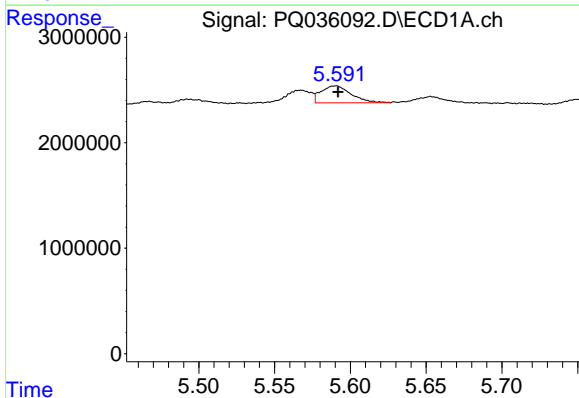
R.T.: 5.567 min
 Delta R.T.: -0.003 min
 Response: 1413355
 Conc: 11.05 ng/ml

Instrument :
 ECD_Q
 ClientSampled :



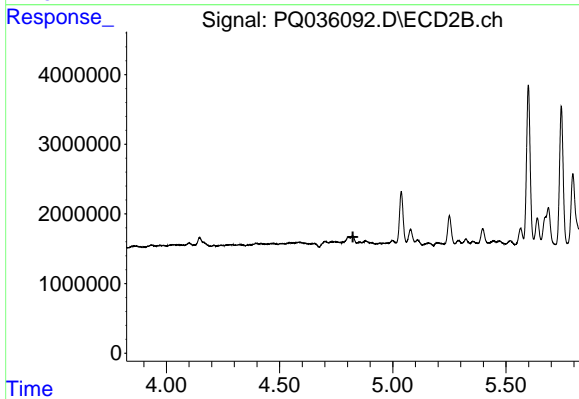
#3 AR-1016-1

R.T.: 0.000 min
 Exp R.T. : 4.806 min
 Response: 0
 Conc: N.D.



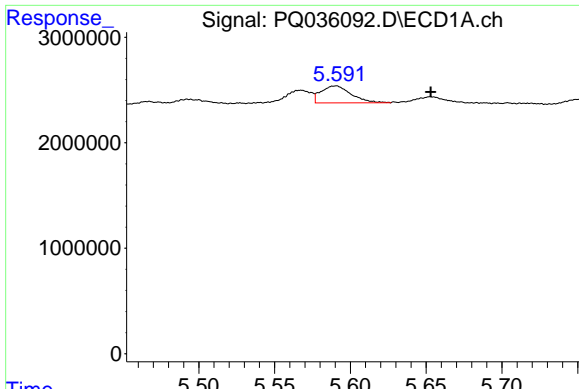
#4 AR-1016-2

R.T.: 5.590 min
 Delta R.T.: -0.002 min
 Response: 2236909
 Conc: 11.66 ng/ml



#4 AR-1016-2

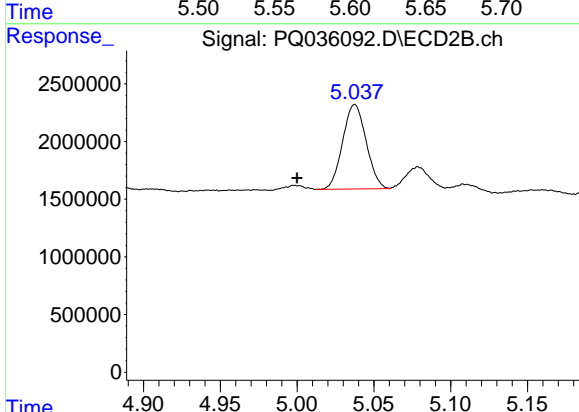
R.T.: 0.000 min
 Exp R.T. : 4.824 min
 Response: 0
 Conc: N.D.



#5 AR-1016-3

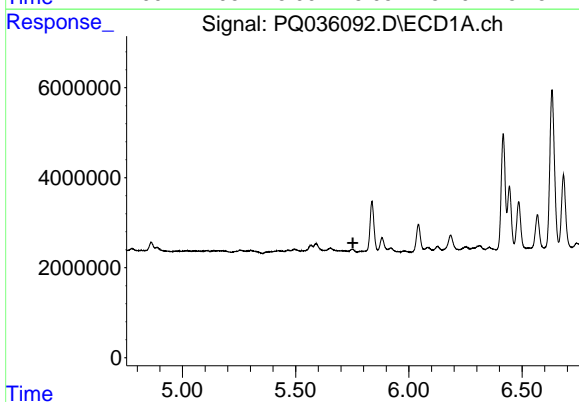
R.T.: 5.590 min
 Delta R.T.: -0.063 min
 Response: 2236909
 Conc: 19.54 ng/ml

Instrument :
 ECD_Q
 ClientSampled :



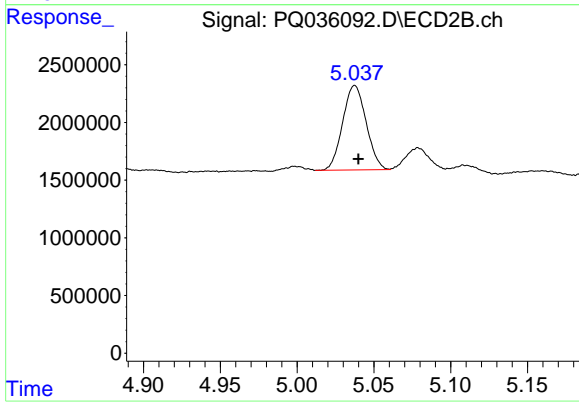
#5 AR-1016-3

R.T.: 5.038 min
 Delta R.T.: 0.038 min
 Response: 7810706
 Conc: 133.75 ng/ml



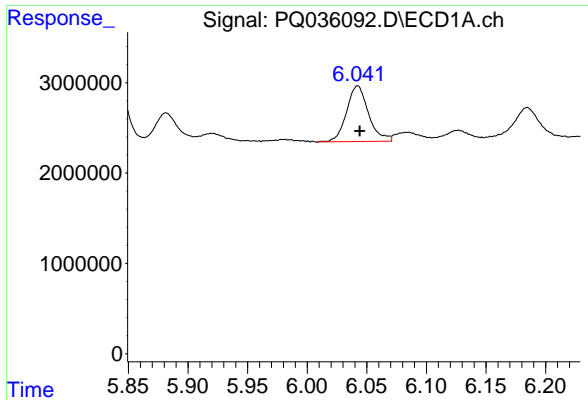
#6 AR-1016-4

R.T.: 0.000 min
 Exp R.T. : 5.753 min
 Response: 0
 Conc: N.D.



#6 AR-1016-4

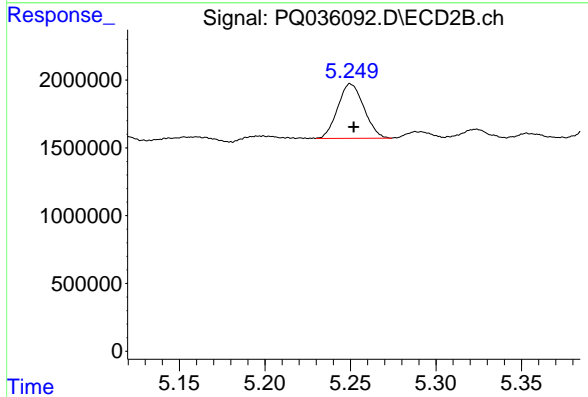
R.T.: 5.038 min
 Delta R.T.: -0.002 min
 Response: 7810706
 Conc: 166.11 ng/ml



#7 AR-1016-5

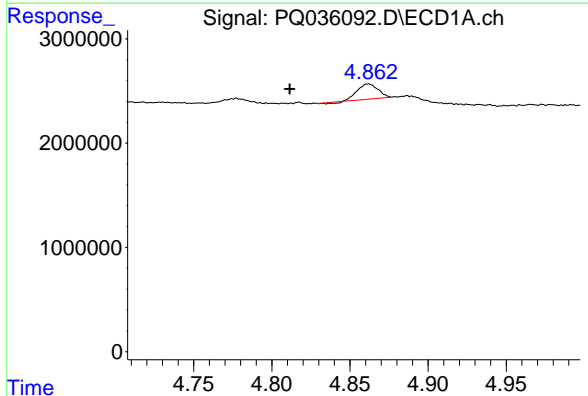
R.T.: 6.042 min
 Delta R.T.: -0.002 min
 Response: 7870549
 Conc: 86.46 ng/ml

Instrument :
 ECD_Q
 ClientSampleId :



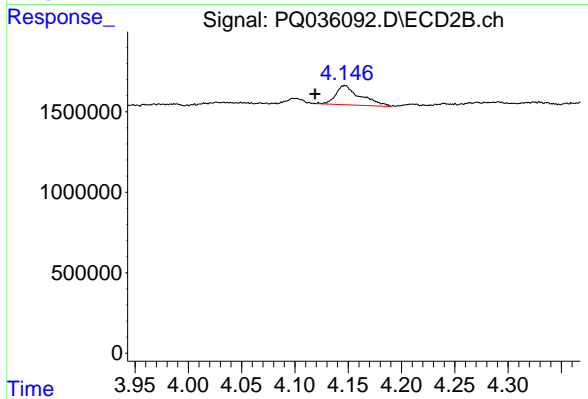
#7 AR-1016-5

R.T.: 5.250 min
 Delta R.T.: -0.002 min
 Response: 4273321
 Conc: 69.61 ng/ml



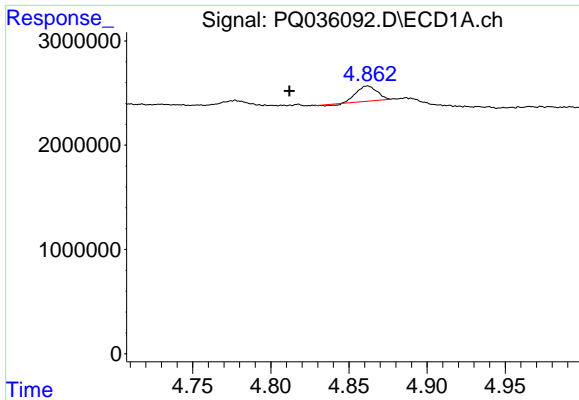
#10 AR-1221-3

R.T.: 4.862 min
 Delta R.T.: 0.050 min
 Response: 1280223
 Conc: 15.38 ng/ml



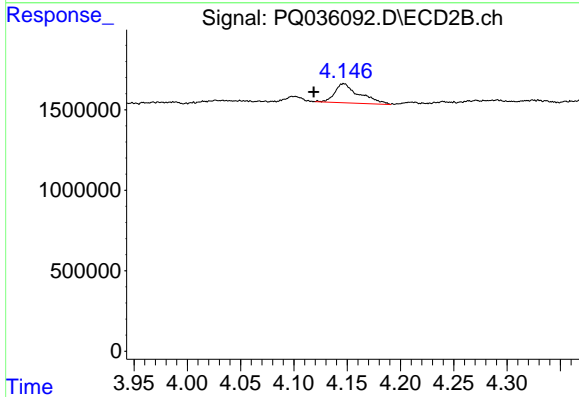
#10 AR-1221-3

R.T.: 4.147 min
 Delta R.T.: 0.028 min
 Response: 1913214
 Conc: 39.38 ng/ml

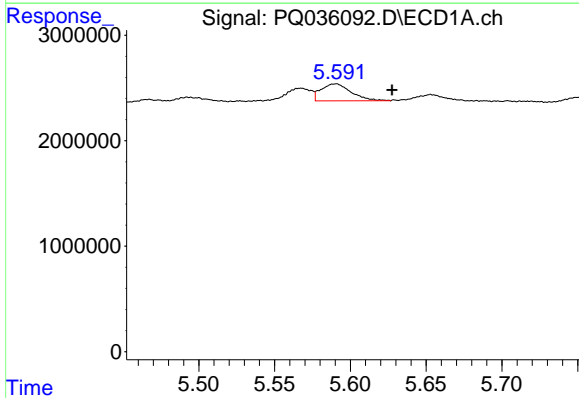


#11 AR-1232-1
 R.T.: 4.862 min
 Delta R.T.: 0.050 min
 Response: 1280223
 Conc: 17.61 ng/ml

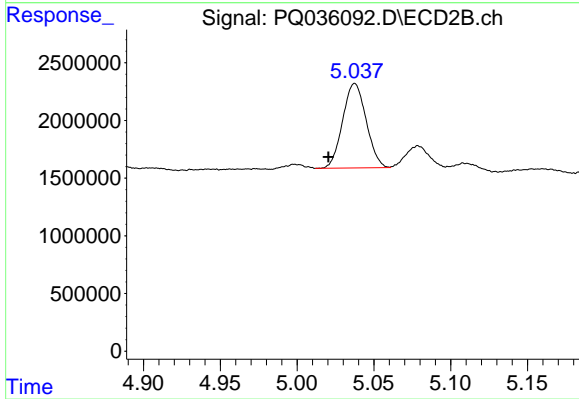
Instrument :
 ECD_Q
 ClientSampleId :



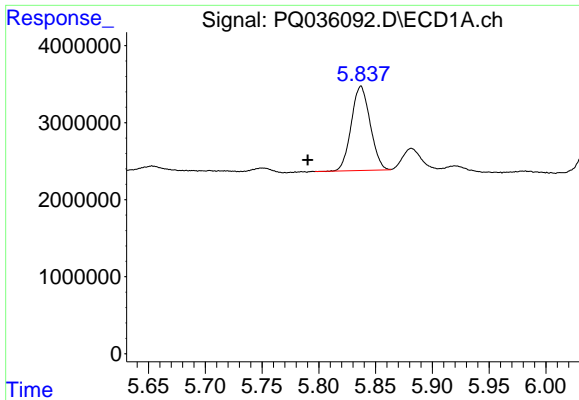
#11 AR-1232-1
 R.T.: 4.147 min
 Delta R.T.: 0.028 min
 Response: 1913214
 Conc: 43.45 ng/ml



#13 AR-1232-3
 R.T.: 5.590 min
 Delta R.T.: -0.037 min
 Response: 2236909
 Conc: 27.36 ng/ml

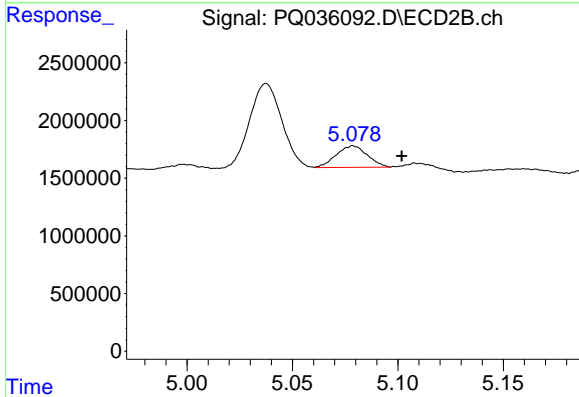


#13 AR-1232-3
 R.T.: 5.038 min
 Delta R.T.: 0.017 min
 Response: 7810706
 Conc: 305.68 ng/ml

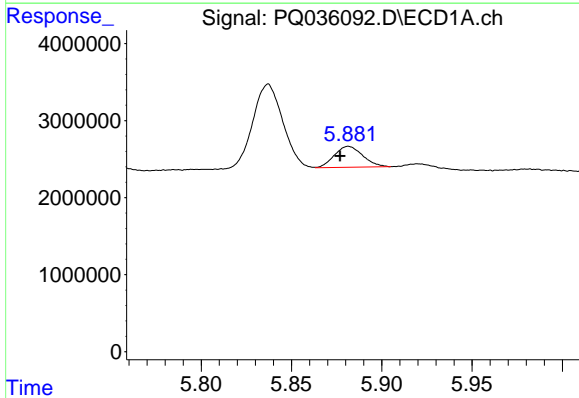


#14 AR-1232-4
 R.T.: 5.837 min
 Delta R.T.: 0.047 min
 Response: 12660095
 Conc: 316.17 ng/ml

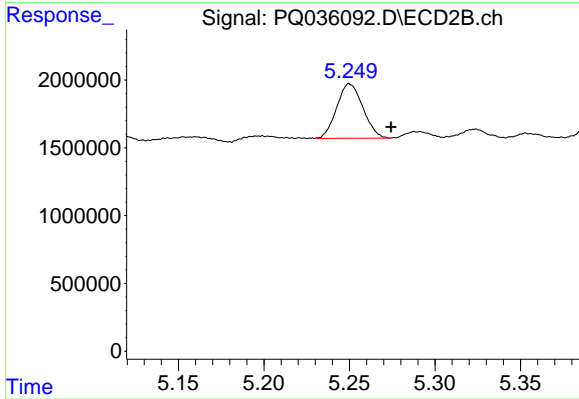
Instrument :
 ECD_Q
 ClientSampleId :



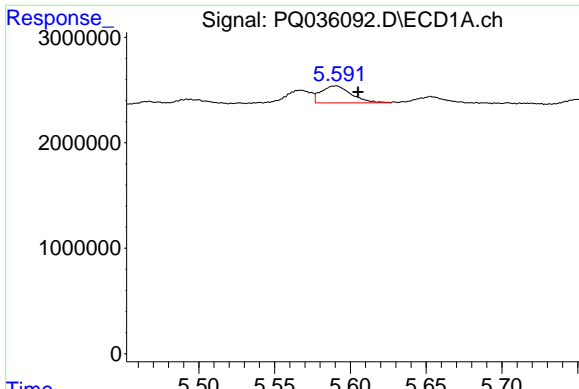
#14 AR-1232-4
 R.T.: 5.079 min
 Delta R.T.: -0.023 min
 Response: 1919498
 Conc: 84.13 ng/ml



#15 AR-1232-5
 R.T.: 5.882 min
 Delta R.T.: 0.005 min
 Response: 2984946
 Conc: 94.26 ng/ml



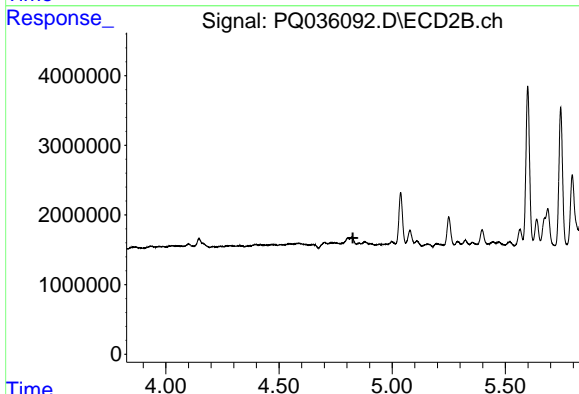
#15 AR-1232-5
 R.T.: 5.250 min
 Delta R.T.: -0.024 min
 Response: 4273321
 Conc: 171.09 ng/ml



#16 AR-1242-1

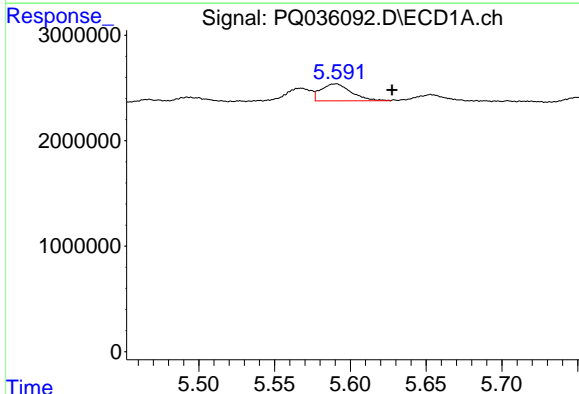
R.T.: 5.590 min
 Delta R.T.: -0.015 min
 Response: 2236909
 Conc: 23.19 ng/ml

Instrument :
 ECD_Q
 ClientSampled :



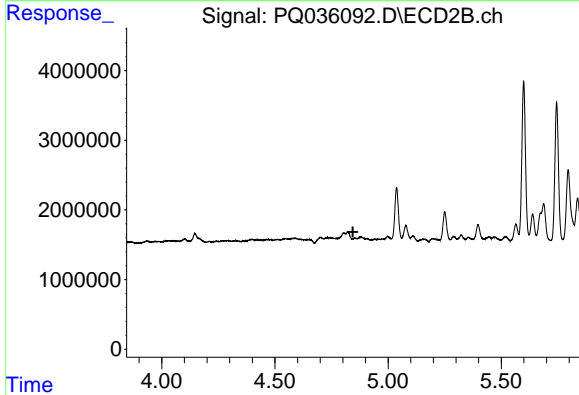
#16 AR-1242-1

R.T.: 0.000 min
 Exp R.T. : 4.827 min
 Response: 0
 Conc: N.D.



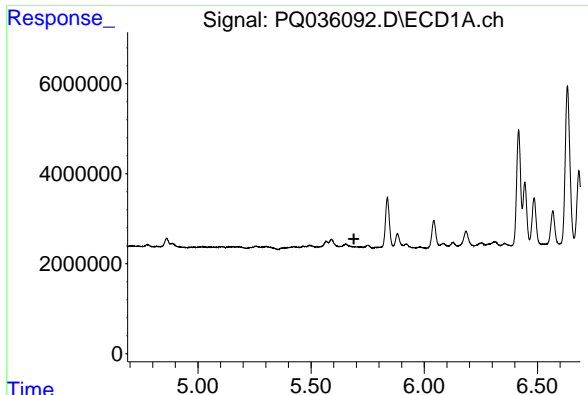
#17 AR-1242-2

R.T.: 5.590 min
 Delta R.T.: -0.037 min
 Response: 2236909
 Conc: 15.42 ng/ml



#17 AR-1242-2

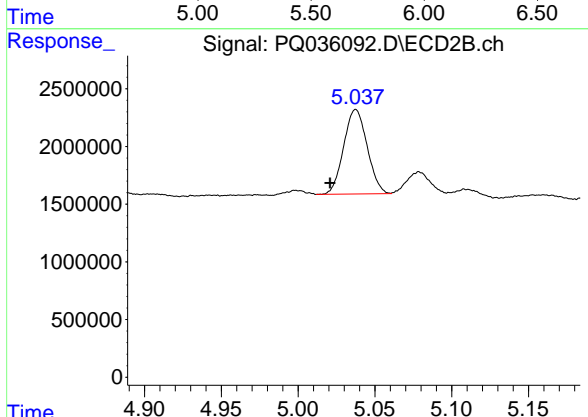
R.T.: 0.000 min
 Exp R.T. : 4.844 min
 Response: 0
 Conc: N.D.



#18 AR-1242-3

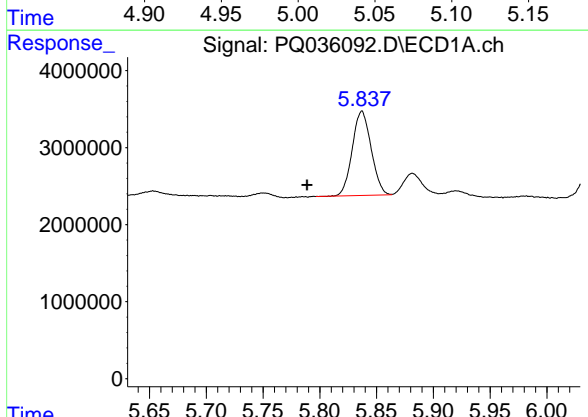
R.T.: 0.000 min
 Exp R.T.: 5.689 min
 Response: 0
 Conc: N.D.

Instrument :
 ECD_Q
 ClientSampleId :



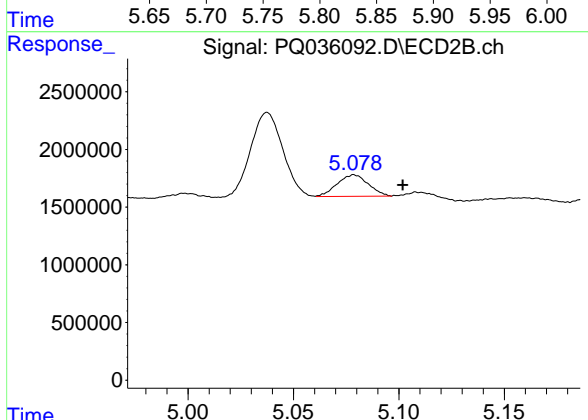
#18 AR-1242-3

R.T.: 5.038 min
 Delta R.T.: 0.017 min
 Response: 7810706
 Conc: 173.44 ng/ml



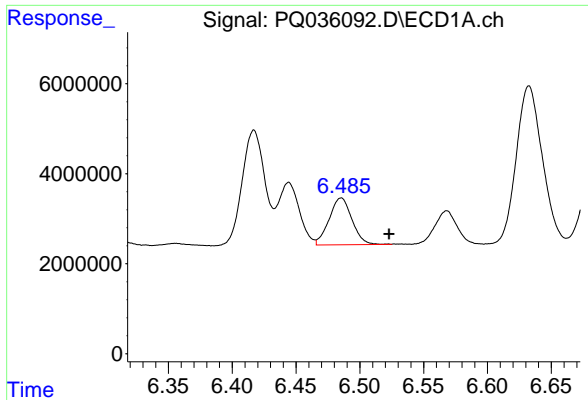
#19 AR-1242-4

R.T.: 5.837 min
 Delta R.T.: 0.048 min
 Response: 12660095
 Conc: 183.00 ng/ml



#19 AR-1242-4

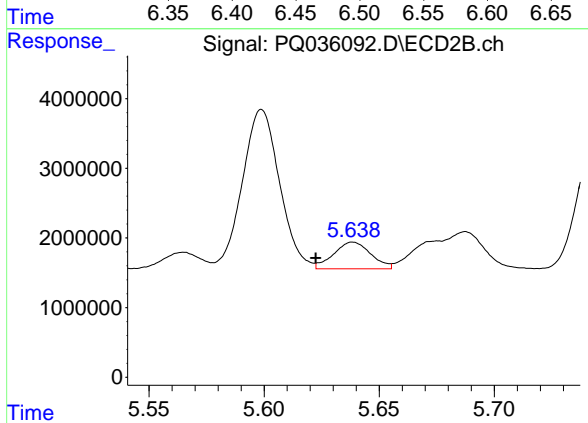
R.T.: 5.079 min
 Delta R.T.: -0.023 min
 Response: 1919498
 Conc: 43.35 ng/ml



#20 AR-1242-5

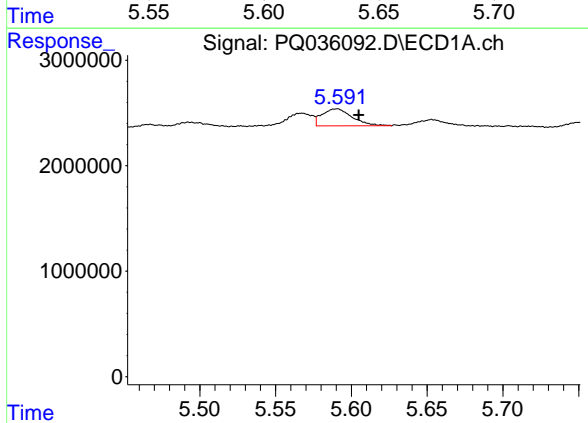
R.T.: 6.485 min
 Delta R.T.: -0.037 min
 Response: 12890666
 Conc: 164.31 ng/ml

Instrument :
 ECD_Q
 ClientSampled :



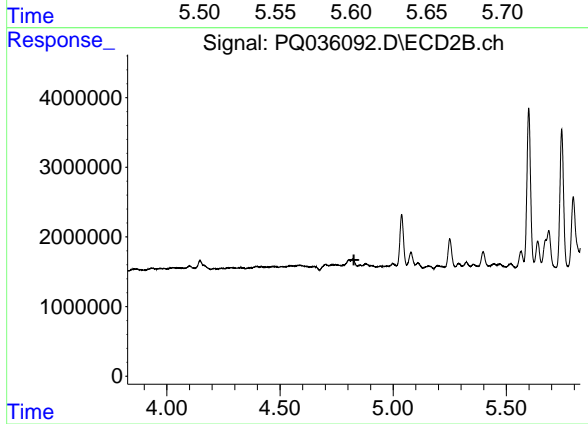
#20 AR-1242-5

R.T.: 5.639 min
 Delta R.T.: 0.016 min
 Response: 4306456
 Conc: 78.03 ng/ml



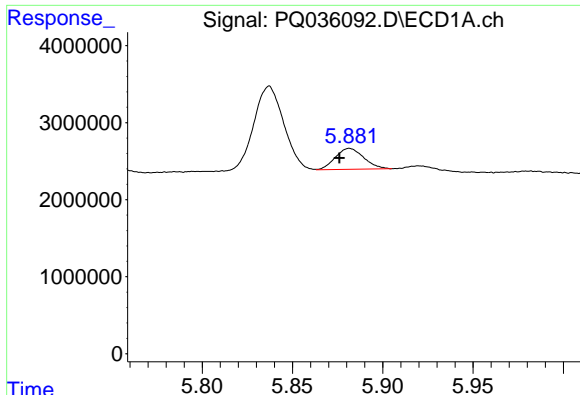
#21 AR-1248-1

R.T.: 5.590 min
 Delta R.T.: -0.015 min
 Response: 2236909
 Conc: 33.89 ng/ml



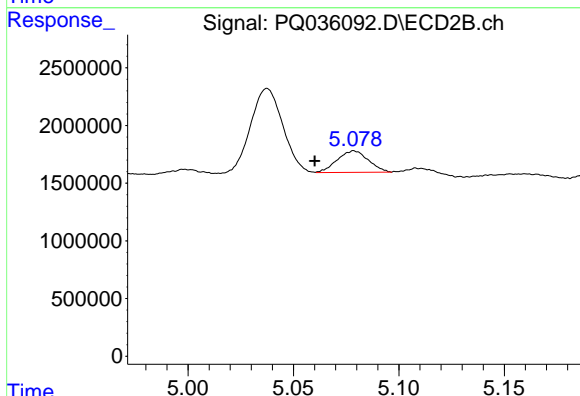
#21 AR-1248-1

R.T.: 0.000 min
 Exp R.T. : 4.827 min
 Response: 0
 Conc: N.D.

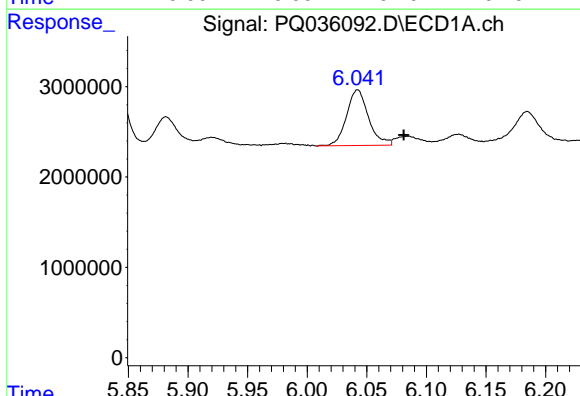


#22 AR-1248-2
 R.T.: 5.882 min
 Delta R.T.: 0.006 min
 Response: 2984946
 Conc: 31.49 ng/ml

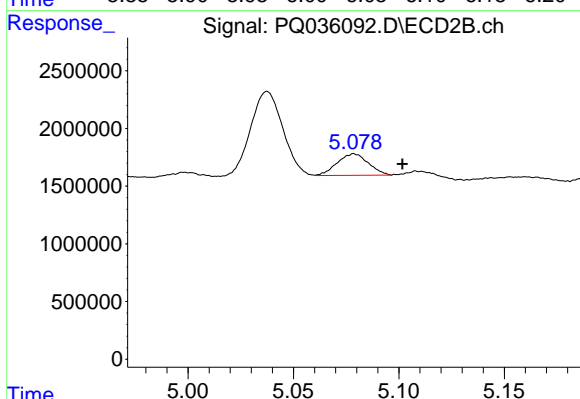
Instrument :
 ECD_Q
 ClientSampled :



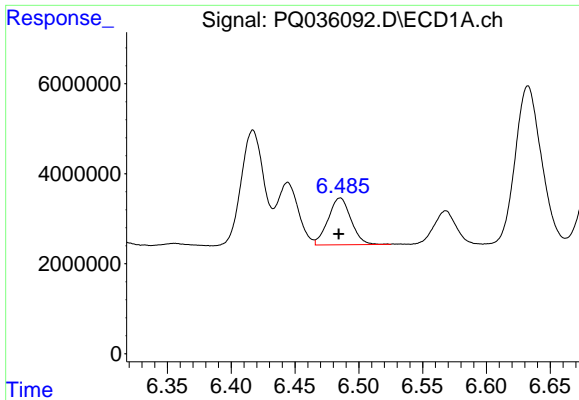
#22 AR-1248-2
 R.T.: 5.079 min
 Delta R.T.: 0.019 min
 Response: 1919498
 Conc: 35.37 ng/ml



#23 AR-1248-3
 R.T.: 6.042 min
 Delta R.T.: -0.039 min
 Response: 7870549
 Conc: 75.32 ng/ml



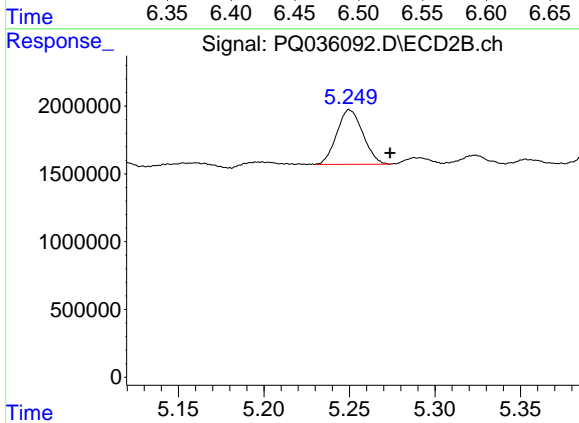
#23 AR-1248-3
 R.T.: 5.079 min
 Delta R.T.: -0.023 min
 Response: 1919498
 Conc: 34.40 ng/ml



#24 AR-1248-4

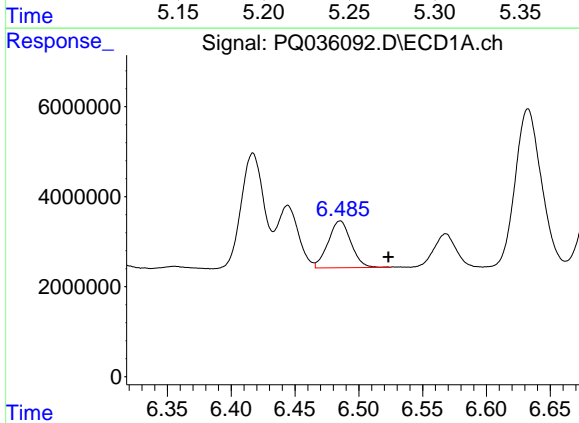
R.T.: 6.485 min
 Delta R.T.: 0.001 min
 Response: 12890666
 Conc: 104.68 ng/ml

Instrument :
 ECD_Q
 ClientSampleId :



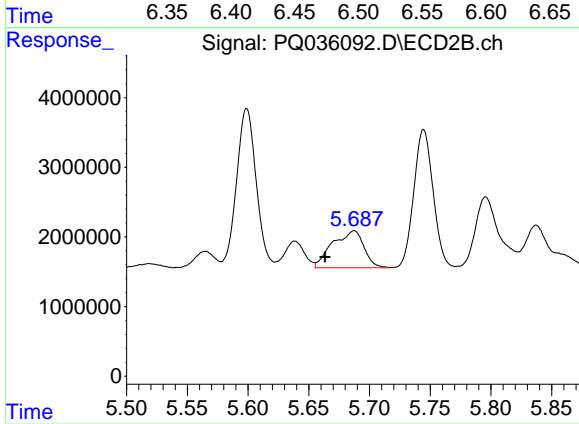
#24 AR-1248-4

R.T.: 5.250 min
 Delta R.T.: -0.024 min
 Response: 4273321
 Conc: 61.73 ng/ml



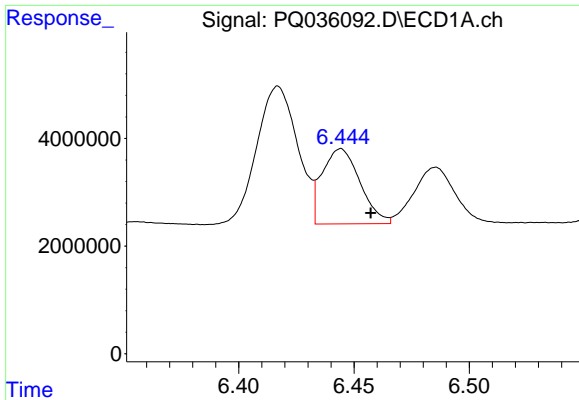
#25 AR-1248-5

R.T.: 6.485 min
 Delta R.T.: -0.038 min
 Response: 12890666
 Conc: 110.18 ng/ml



#25 AR-1248-5

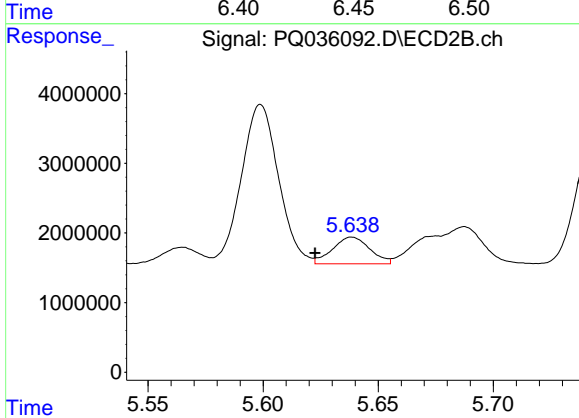
R.T.: 5.687 min
 Delta R.T.: 0.024 min
 Response: 9521183
 Conc: 135.09 ng/ml



#26 AR-1254-1

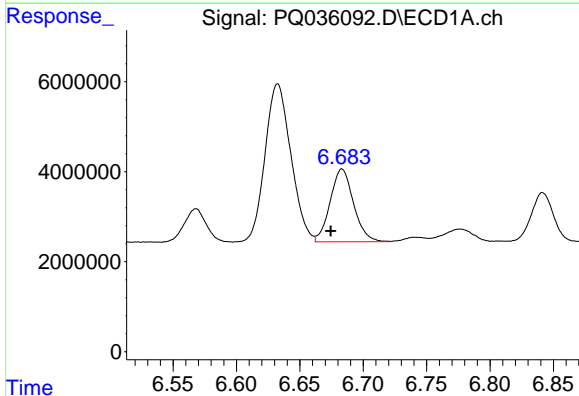
R.T.: 6.444 min
 Delta R.T.: -0.013 min
 Response: 15979538
 Conc: 104.97 ng/ml

Instrument :
 ECD_Q
 ClientSampled :



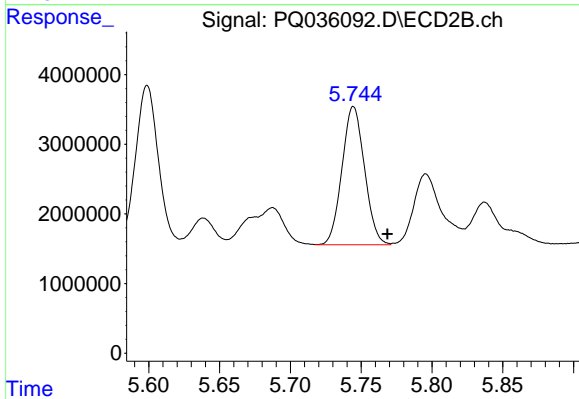
#26 AR-1254-1

R.T.: 5.639 min
 Delta R.T.: 0.016 min
 Response: 4306456
 Conc: 32.29 ng/ml



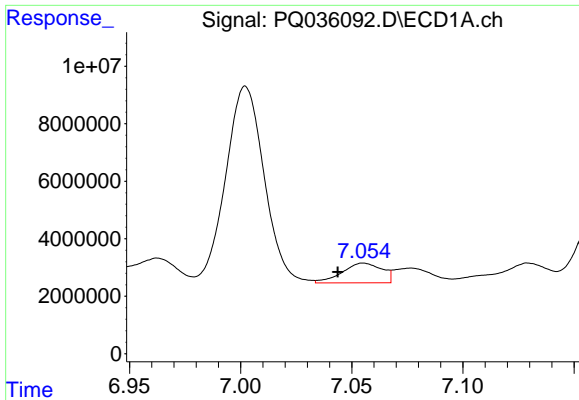
#27 AR-1254-2

R.T.: 6.683 min
 Delta R.T.: 0.009 min
 Response: 20798392
 Conc: 87.90 ng/ml



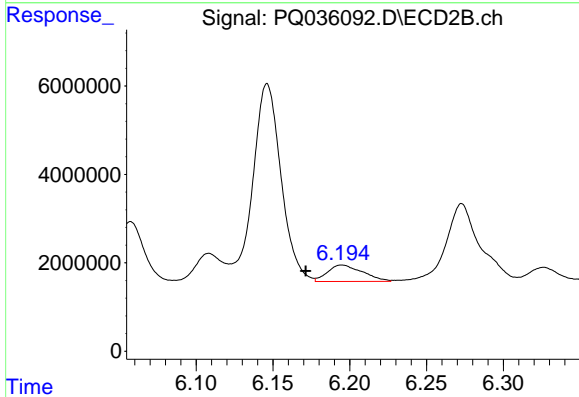
#27 AR-1254-2

R.T.: 5.745 min
 Delta R.T.: -0.024 min
 Response: 21969360
 Conc: 190.13 ng/ml

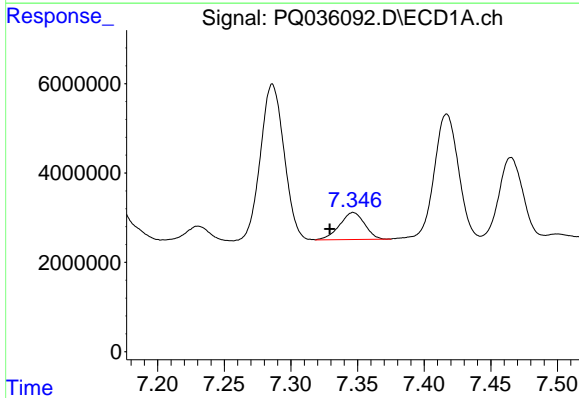


#28 AR-1254-3
 R.T.: 7.055 min
 Delta R.T.: 0.012 min
 Response: 8538155
 Conc: 33.25 ng/ml

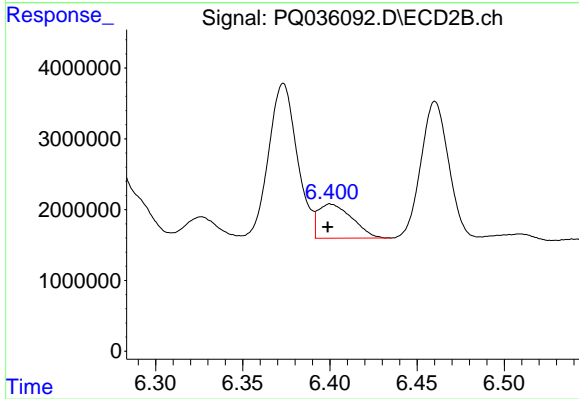
Instrument :
 ECD_Q
 ClientSampled :



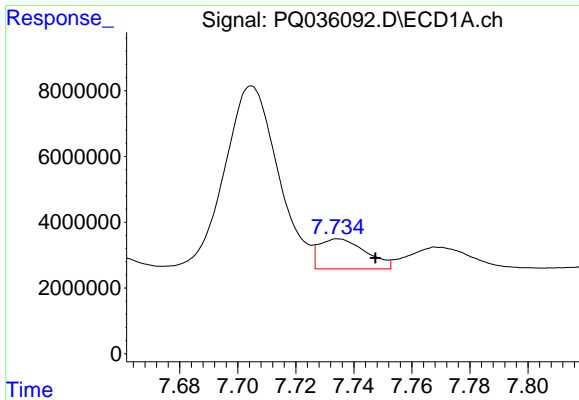
#28 AR-1254-3
 R.T.: 6.195 min
 Delta R.T.: 0.024 min
 Response: 5872522
 Conc: 30.42 ng/ml



#29 AR-1254-4
 R.T.: 7.347 min
 Delta R.T.: 0.018 min
 Response: 7898078
 Conc: 43.56 ng/ml



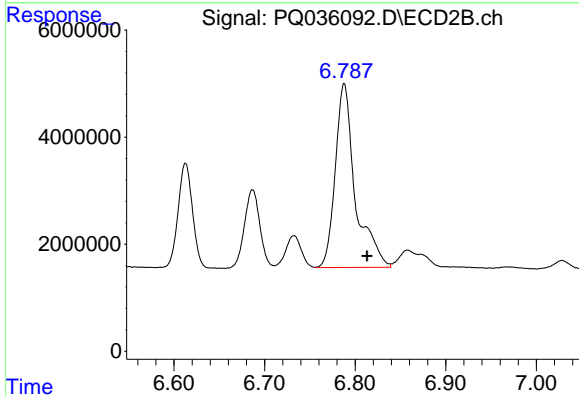
#29 AR-1254-4
 R.T.: 6.400 min
 Delta R.T.: 0.002 min
 Response: 6514359
 Conc: 54.13 ng/ml



#30 AR-1254-5

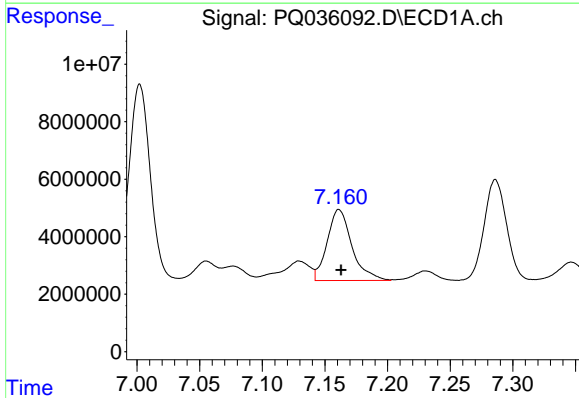
R.T.: 7.735 min
 Delta R.T.: -0.013 min
 Response: 10210869
 Conc: 52.06 ng/ml

Instrument :
 ECD_Q
 ClientSampled :



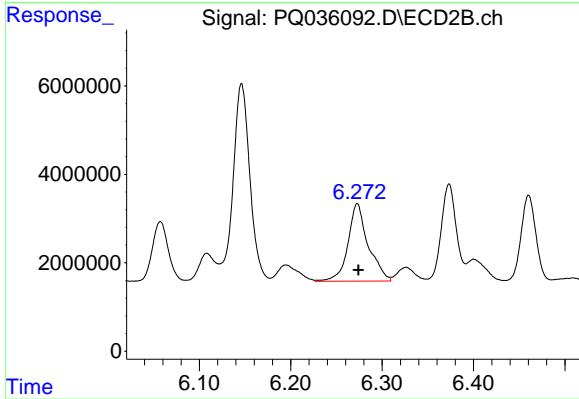
#30 AR-1254-5

R.T.: 6.788 min
 Delta R.T.: -0.025 min
 Response: 52676601
 Conc: 323.44 ng/ml



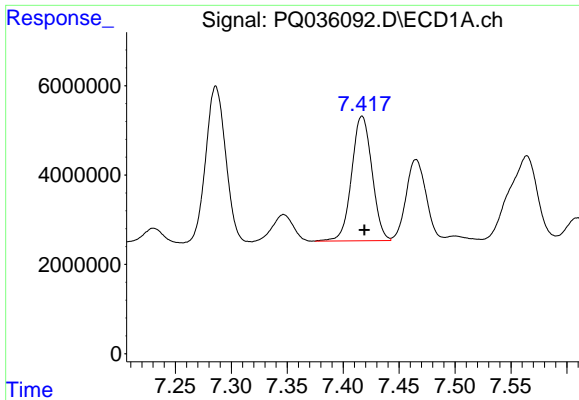
#31 AR-1260-1

R.T.: 7.161 min
 Delta R.T.: -0.002 min
 Response: 34015554
 Conc: 184.46 ng/ml



#31 AR-1260-1

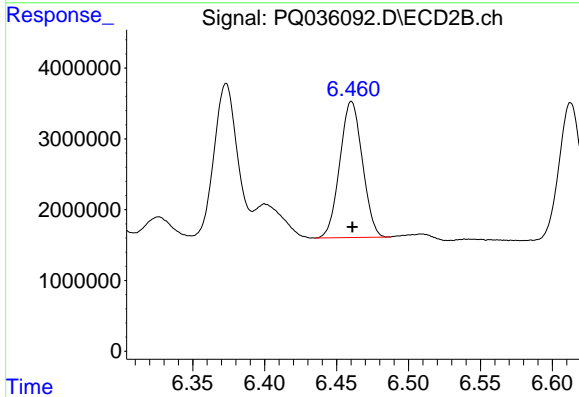
R.T.: 6.273 min
 Delta R.T.: -0.001 min
 Response: 26922288
 Conc: 214.03 ng/ml



#32 AR-1260-2

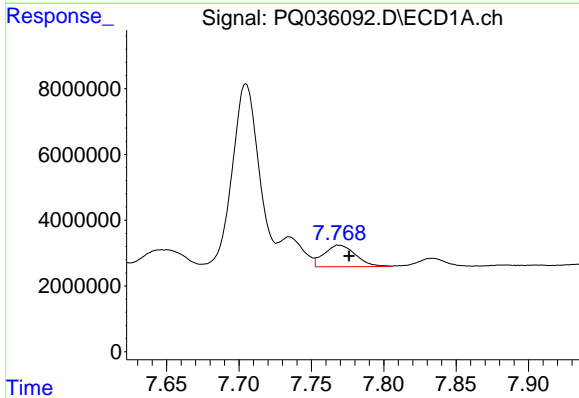
R.T.: 7.417 min
 Delta R.T.: -0.002 min
 Response: 35329944
 Conc: 162.60 ng/ml

Instrument :
 ECD_Q
 ClientSampled :



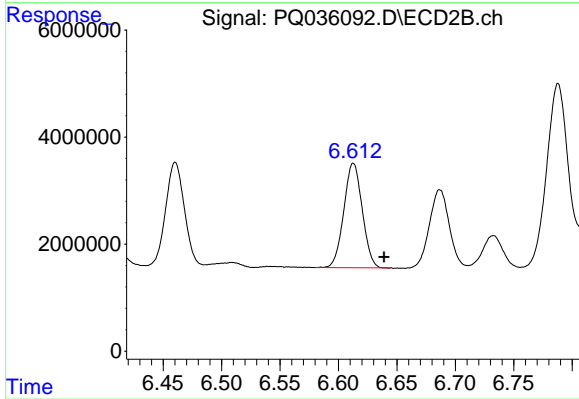
#32 AR-1260-2

R.T.: 6.460 min
 Delta R.T.: 0.000 min
 Response: 21073609
 Conc: 139.55 ng/ml



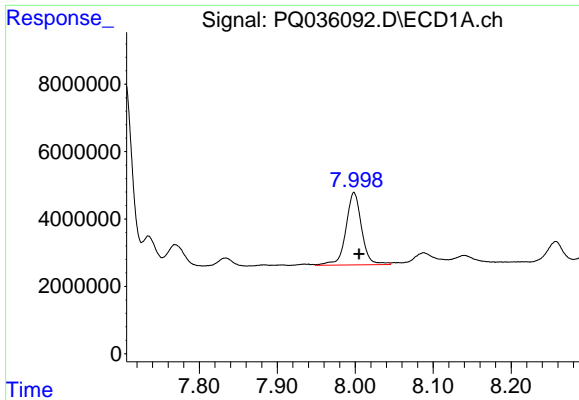
#33 AR-1260-3

R.T.: 7.769 min
 Delta R.T.: -0.007 min
 Response: 9872841
 Conc: 73.70 ng/ml



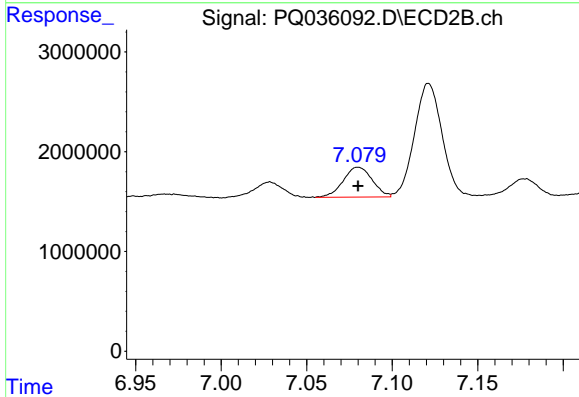
#33 AR-1260-3

R.T.: 6.613 min
 Delta R.T.: -0.026 min
 Response: 21409315
 Conc: 153.21 ng/ml

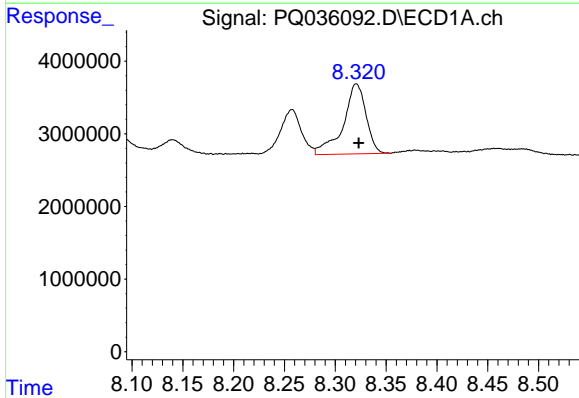


#34 AR-1260-4
 R.T.: 7.998 min
 Delta R.T.: -0.007 min
 Response: 30037856
 Conc: 182.26 ng/ml

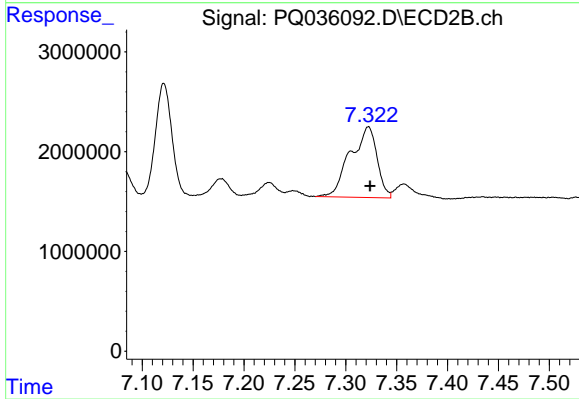
Instrument :
 ECD_Q
 ClientSampleId :



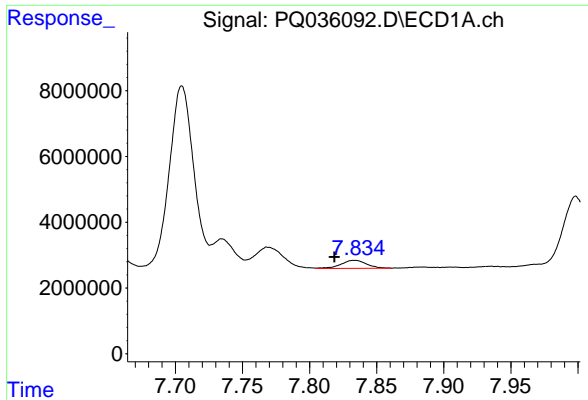
#34 AR-1260-4
 R.T.: 7.080 min
 Delta R.T.: 0.000 min
 Response: 3547131
 Conc: 38.20 ng/ml



#35 AR-1260-5
 R.T.: 8.321 min
 Delta R.T.: -0.002 min
 Response: 15091648
 Conc: 50.61 ng/ml

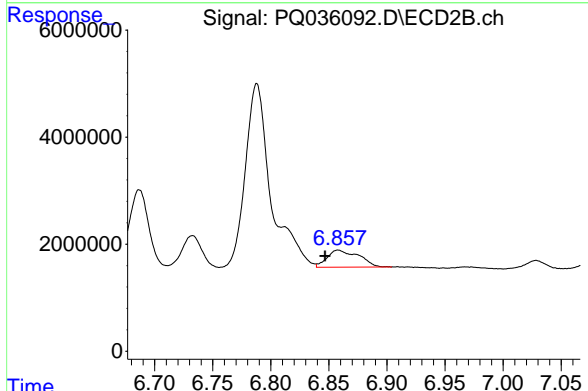


#35 AR-1260-5
 R.T.: 7.322 min
 Delta R.T.: -0.002 min
 Response: 12960108
 Conc: 57.76 ng/ml

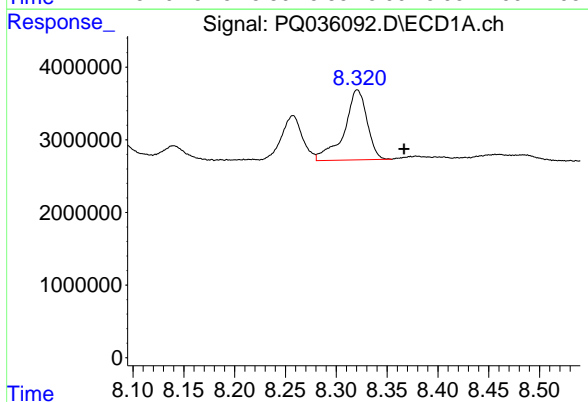


#36 AR-1262-1
 R.T.: 7.834 min
 Delta R.T.: 0.015 min
 Response: 3219820
 Conc: 14.70 ng/ml

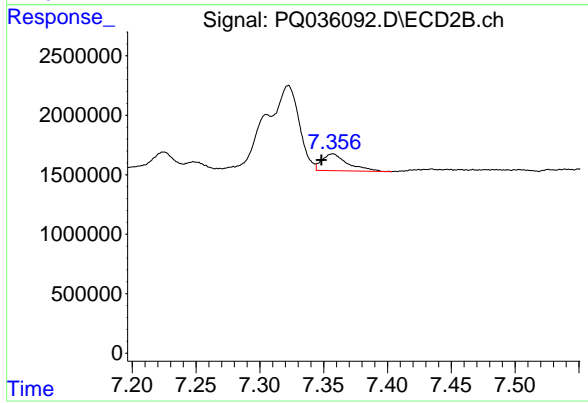
Instrument :
 ECD_Q
 ClientSampled :



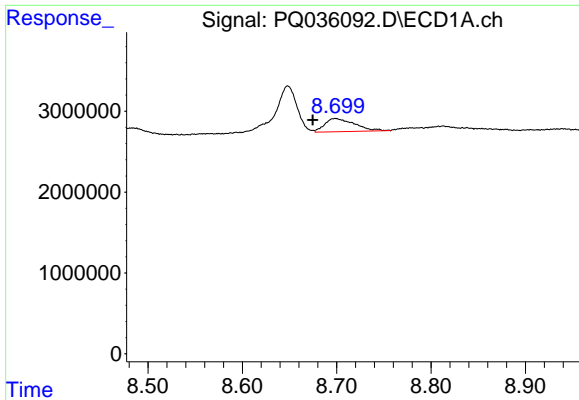
#36 AR-1262-1
 R.T.: 6.858 min
 Delta R.T.: 0.011 min
 Response: 6053403
 Conc: 39.44 ng/ml



#37 AR-1262-2
 R.T.: 8.321 min
 Delta R.T.: -0.046 min
 Response: 15091648
 Conc: 40.06 ng/ml



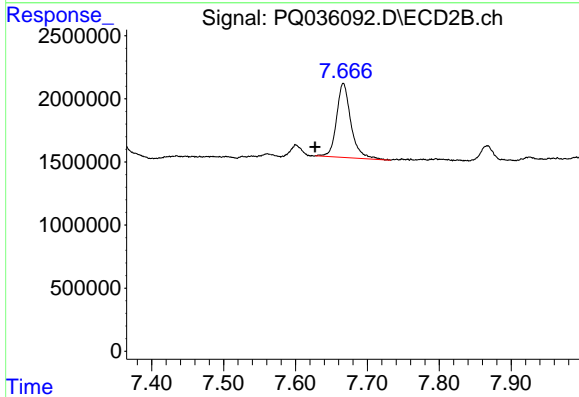
#37 AR-1262-2
 R.T.: 7.357 min
 Delta R.T.: 0.009 min
 Response: 1991347
 Conc: 7.46 ng/ml



#38 AR-1262-3

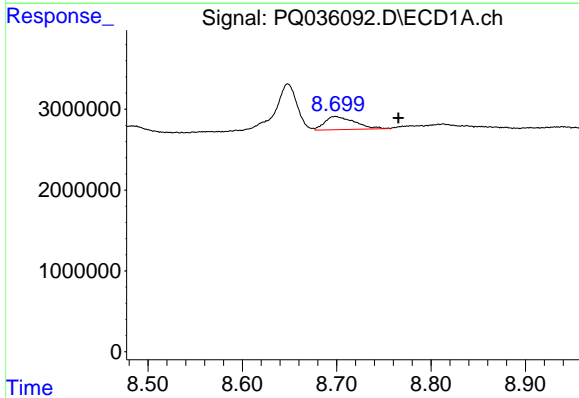
R.T.: 8.699 min
 Delta R.T.: 0.024 min
 Response: 3564474
 Conc: 14.83 ng/ml

Instrument :
 ECD_Q
 ClientSampleId :



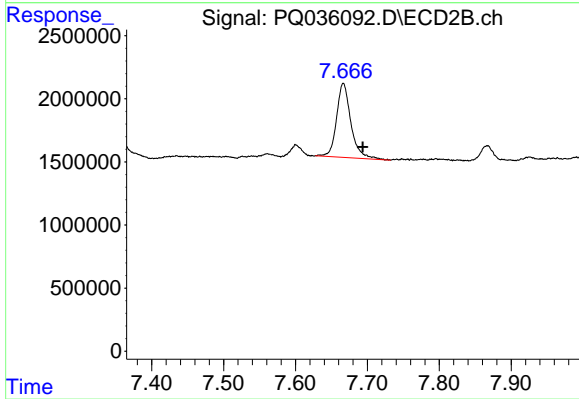
#38 AR-1262-3

R.T.: 7.667 min
 Delta R.T.: 0.039 min
 Response: 8094892
 Conc: 78.00 ng/ml



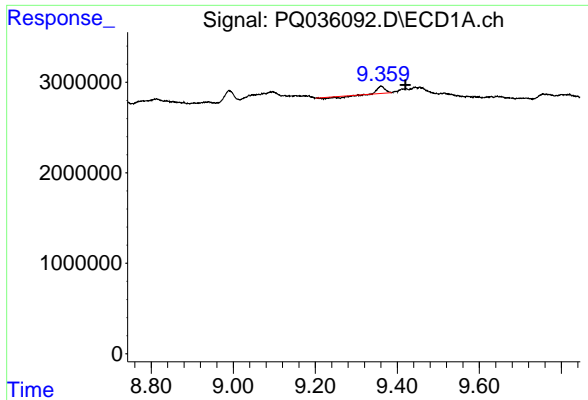
#39 AR-1262-4

R.T.: 8.699 min
 Delta R.T.: -0.067 min
 Response: 3564474
 Conc: 19.73 ng/ml



#39 AR-1262-4

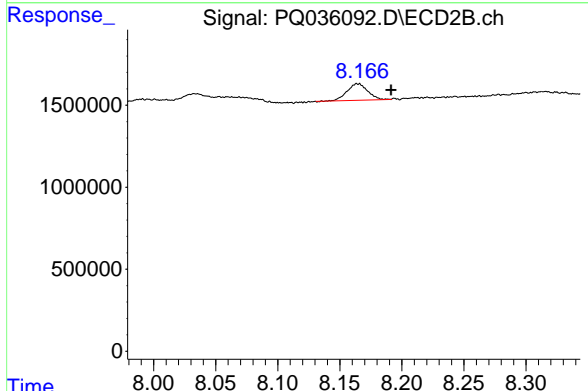
R.T.: 7.667 min
 Delta R.T.: -0.027 min
 Response: 8094892
 Conc: 43.70 ng/ml



#40 AR-1262-5

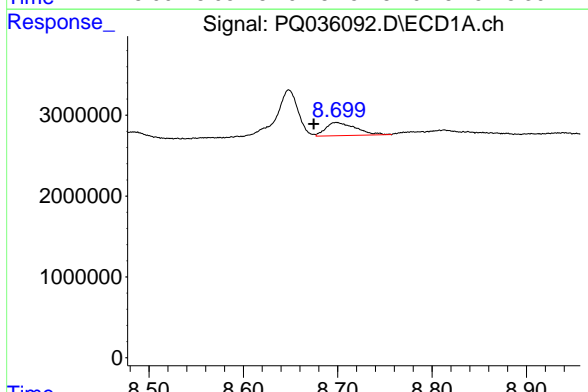
R.T.: 9.360 min
 Delta R.T.: -0.060 min
 Response: 578863
 Conc: 5.08 ng/ml

Instrument :
 ECD_Q
 ClientSampled :



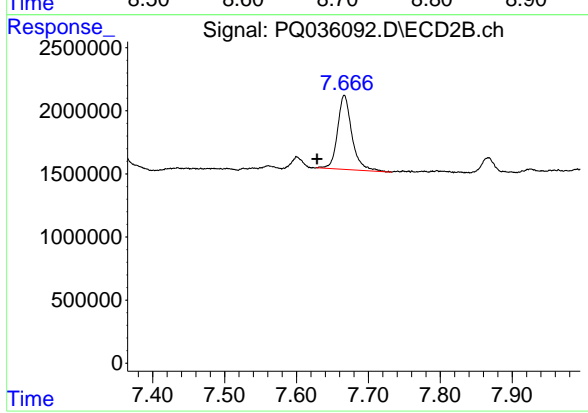
#40 AR-1262-5

R.T.: 8.164 min
 Delta R.T.: -0.027 min
 Response: 1179559
 Conc: 15.89 ng/ml



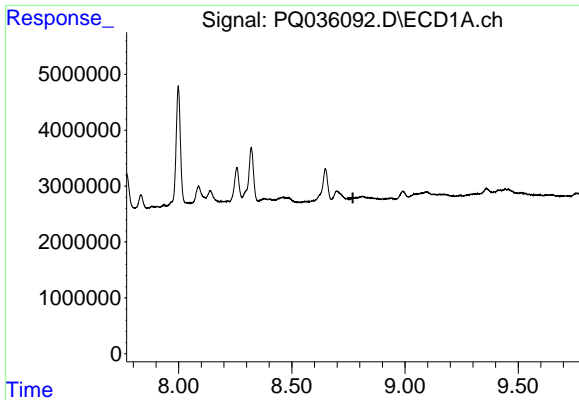
#41 AR-1268-1

R.T.: 8.699 min
 Delta R.T.: 0.024 min
 Response: 3564474
 Conc: 7.39 ng/ml



#41 AR-1268-1

R.T.: 7.667 min
 Delta R.T.: 0.038 min
 Response: 8094892
 Conc: 24.28 ng/ml

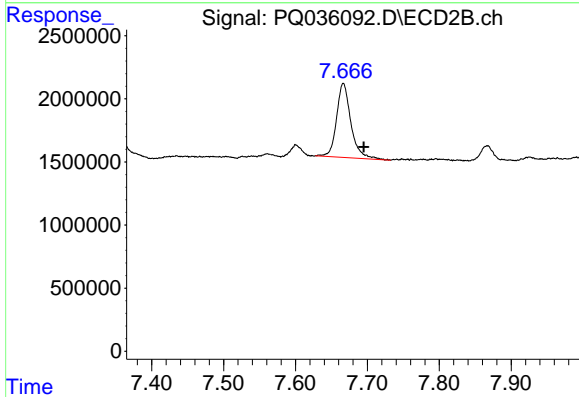


#42 AR-1268-2

R.T.: 0.000 min
 Exp R.T.: 8.770 min
 Response: 0
 Conc: N.D.

Instrument :
 ECD_Q
 ClientSampleId :

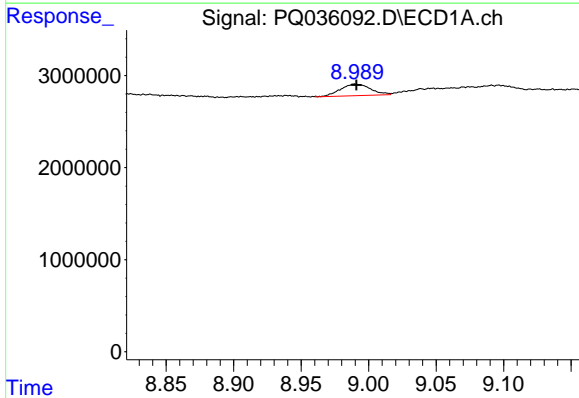
Time



#42 AR-1268-2

R.T.: 7.667 min
 Delta R.T.: -0.028 min
 Response: 8094892
 Conc: 27.31 ng/ml

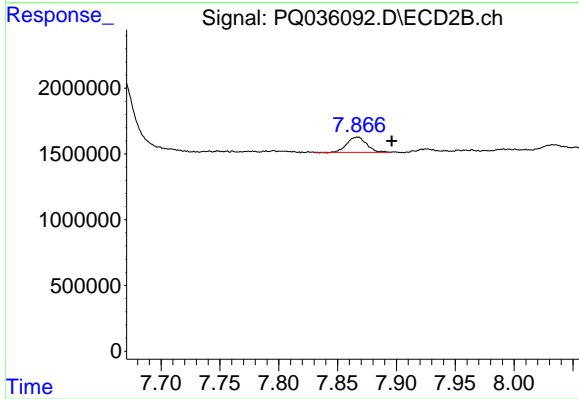
Time



#43 AR-1268-3

R.T.: 8.990 min
 Delta R.T.: 0.000 min
 Response: 1959491
 Conc: 5.19 ng/ml

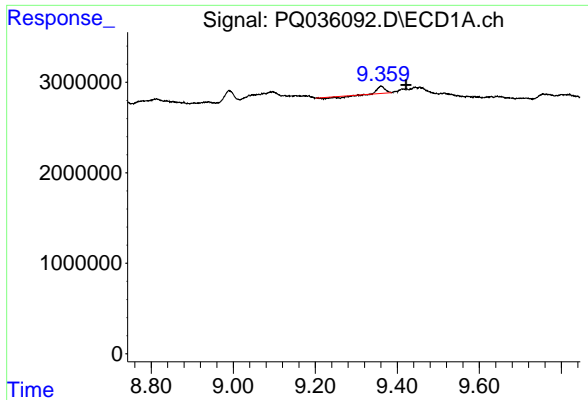
Time



#43 AR-1268-3

R.T.: 7.867 min
 Delta R.T.: -0.029 min
 Response: 1338160
 Conc: 5.47 ng/ml

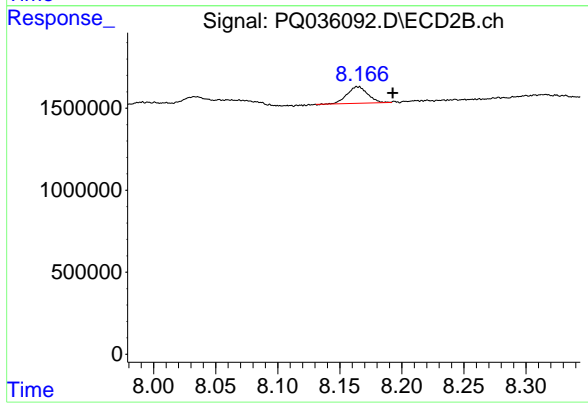
Time



#44 AR-1268-4

R.T.: 9.360 min
Delta R.T.: -0.061 min
Response: 578863
Conc: 4.22 ng/ml

Instrument :
ECD_Q
ClientSampleId :



#44 AR-1268-4

R.T.: 8.164 min
Delta R.T.: -0.028 min
Response: 1179559
Conc: 12.64 ng/ml