

Data Path : Z:\pestpcbsrv\HPCHEM1\ECD_R\Data\PR010219\
 Data File : PR035174.D
 Signal(s) : Signal #1: ECD1A.ch Signal #2: ECD2B.ch
 Acq On : 02 Jan 2019 13:18
 Operator : SM\SJ
 Sample : AR1660CCC400
 Misc :
 ALS Vial : 3 Sample Multiplier: 1

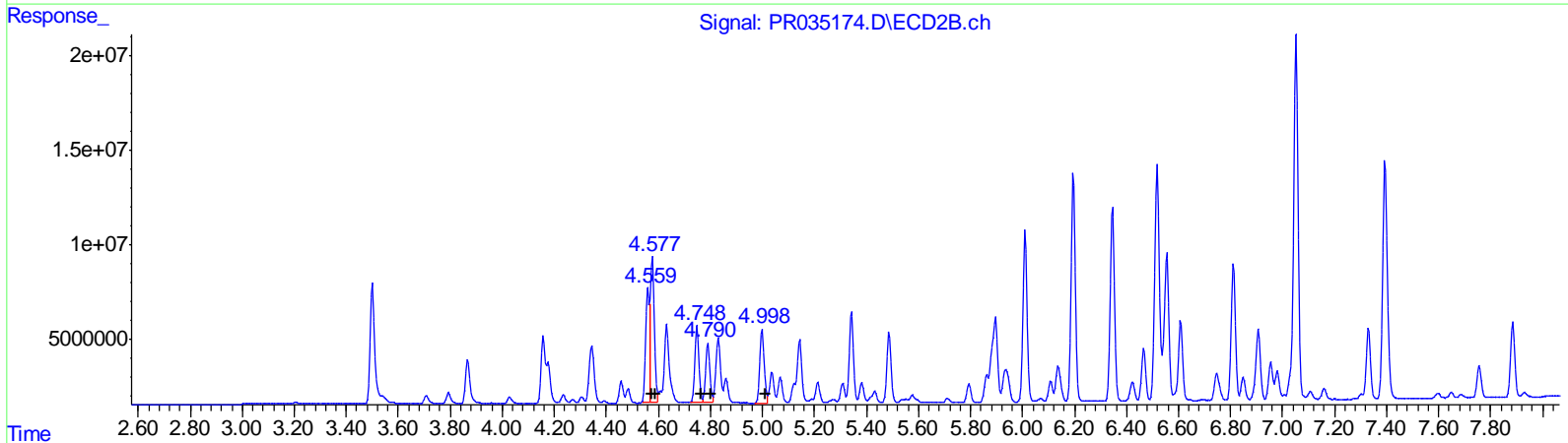
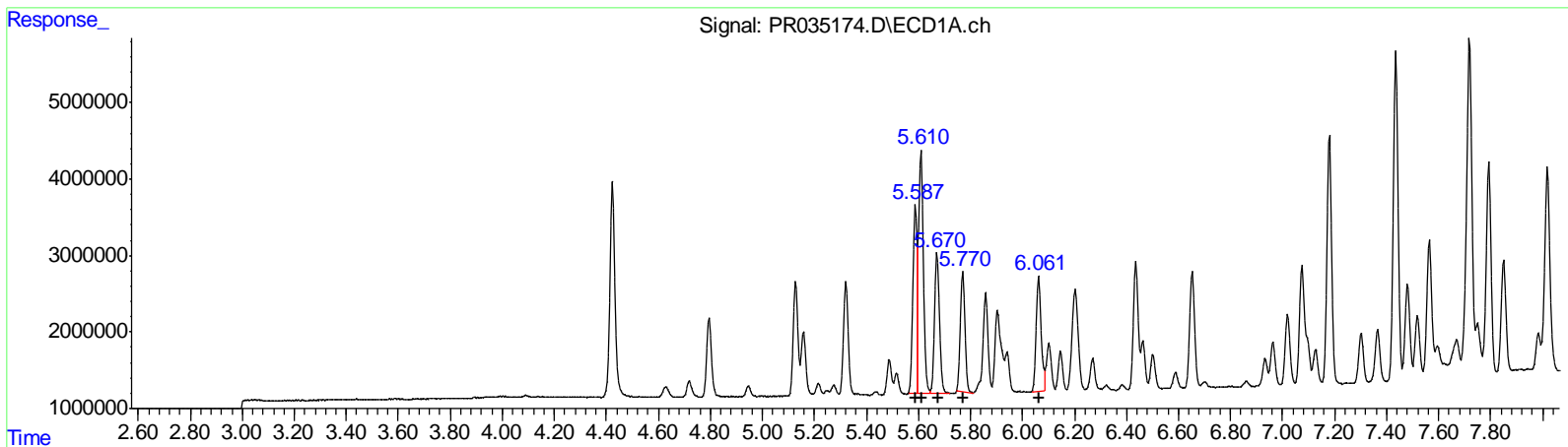
Instrument :
 ECD_R
 LabSampleId :
 AR1660341

Manual Integrations
 APPROVED

Sohil
 1/3/2019 11:07:20 AM

Integration File signal 1: autoint1.e
 Integration File signal 2: autoint2.e
 Quant Time: Jan 03 03:33:17 2019
 Quant Method : Z:\pestpcbsrv\HPCHEM1\ECD_R\Method\PR121818CLP.M
 Quant Title : GC EXTRACTABLES
 QLast Update : Tue Dec 18 01:56:32 2018
 Response via : Initial Calibration
 Integrator: ChemStation

Volume Inj. : 1 µl
 Signal #1 Phase : ZB MR1 Signal #2 Phase: ZB MR2
 Signal #1 Info : 30Mx0.32mmx 0.5µm Signal #2 Info : 30M x 0.32mm x 0.25µm



QEdit

(3) AR-1016-1 (L1)		
R.T.	Response	Conc
5.59	27201085	402.96
5.61	40715942	411.16
5.67	24304396	412.95
5.77	19559733	412.33
6.06	20167831	423.45
(3) AR-1016-1 #2 (L1)		
R.T.	Response	Conc
4.56	58892299	452.58
4.58	81034862	409.99
4.75	43802877	455.73
4.79	34730494	459.71
5.00	46592263	453.12

(+) = Expected Retention Time

Data Path : Z:\pestpcbsrv\HPCHEM1\ECD_R\Data\PR010219\
 Data File : PR035174.D
 Signal(s) : Signal #1: ECD1A.ch Signal #2: ECD2B.ch
 Acq On : 02 Jan 2019 13:18
 Operator : SM\SJ
 Sample : AR1660CCC400
 Misc :
 ALS Vial : 3 Sample Multiplier: 1

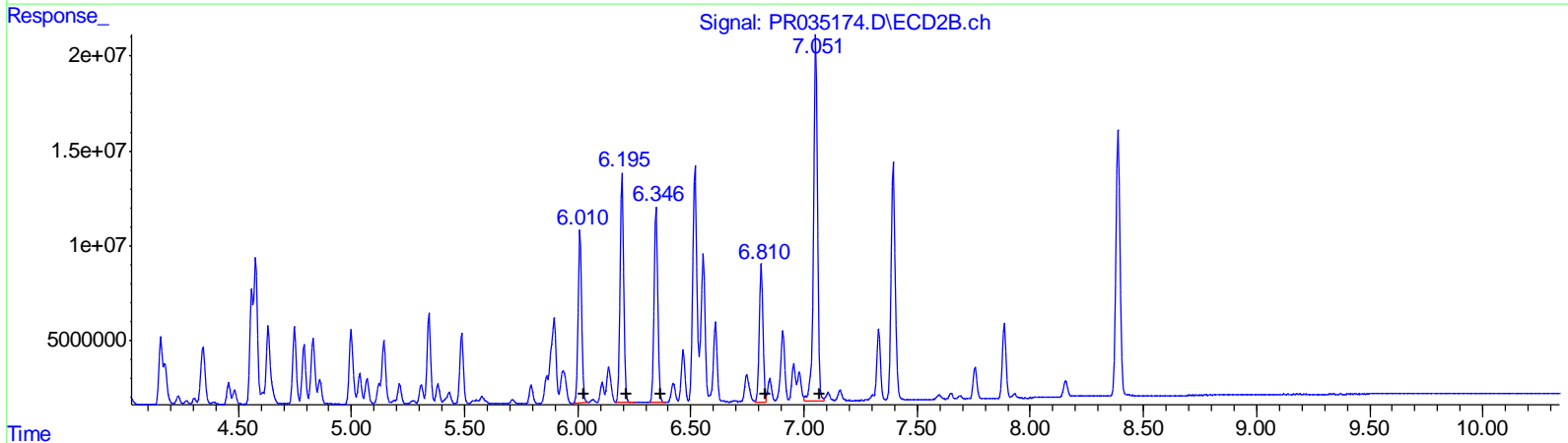
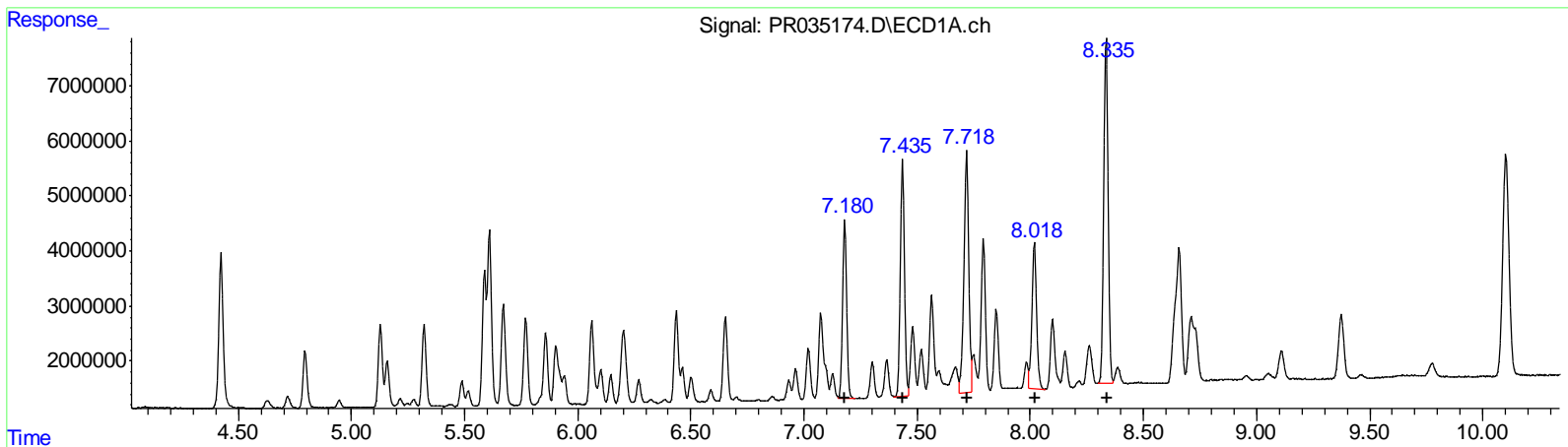
Instrument :
 ECD_R
 LabSampleId :
 AR1660341

Manual Integrations
 APPROVED

Sohil
 1/3/2019 11:07:20 AM

Integration File signal 1: autoint1.e
 Integration File signal 2: autoint2.e
 Quant Time: Jan 03 03:33:17 2019
 Quant Method : Z:\pestpcbsrv\HPCHEM1\ECD_R\Method\PR121818CLP.M
 Quant Title : GC EXTRACTABLES
 QLast Update : Tue Dec 18 01:56:32 2018
 Response via : Initial Calibration
 Integrator: ChemStation

Volume Inj. : 1 µl
 Signal #1 Phase : ZB MR1 Signal #2 Phase: ZB MR2
 Signal #1 Info : 30Mx0.32mmx 0.5µm Signal #2 Info : 30M x 0.32mm x 0.25µm



QEdit

(31) AR-1260-1 (L7)		
R.T.	Response	Conc
7.18	40478644	430.59
7.44	54523232	469.62
7.72	64703894	463.64
8.02	37717618	436.73
8.33	83758387	463.90
(31) AR-1260-1 #2 (L7)		
R.T.	Response	Conc
6.01	97840022	455.13
6.20	134015224	492.48
6.35	115938414	467.05
6.81	82051085	479.86
7.05	234569136	485.00

(+) = Expected Retention Time

Data Path : Z:\pestpcbsrv\HPCHEM1\ECD_R\Data\PR010219\
 Data File : PR035174.D
 Signal(s) : Signal #1: ECD1A.ch Signal #2: ECD2B.ch
 Acq On : 02 Jan 2019 13:18
 Operator : SM\SJ
 Sample : AR1660CCC400
 Misc :
 ALS Vial : 3 Sample Multiplier: 1

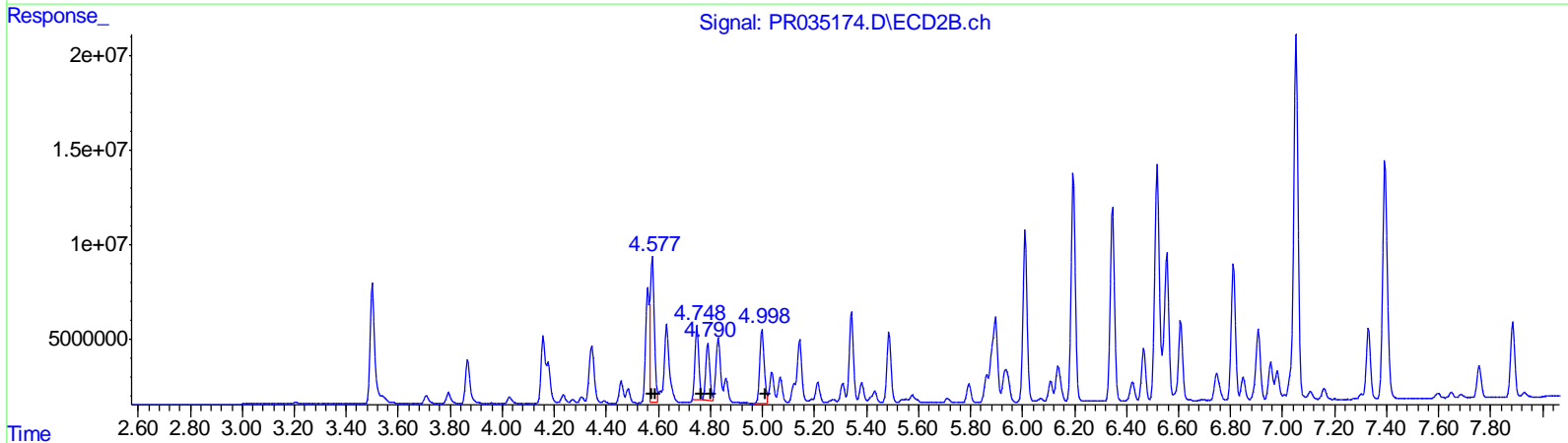
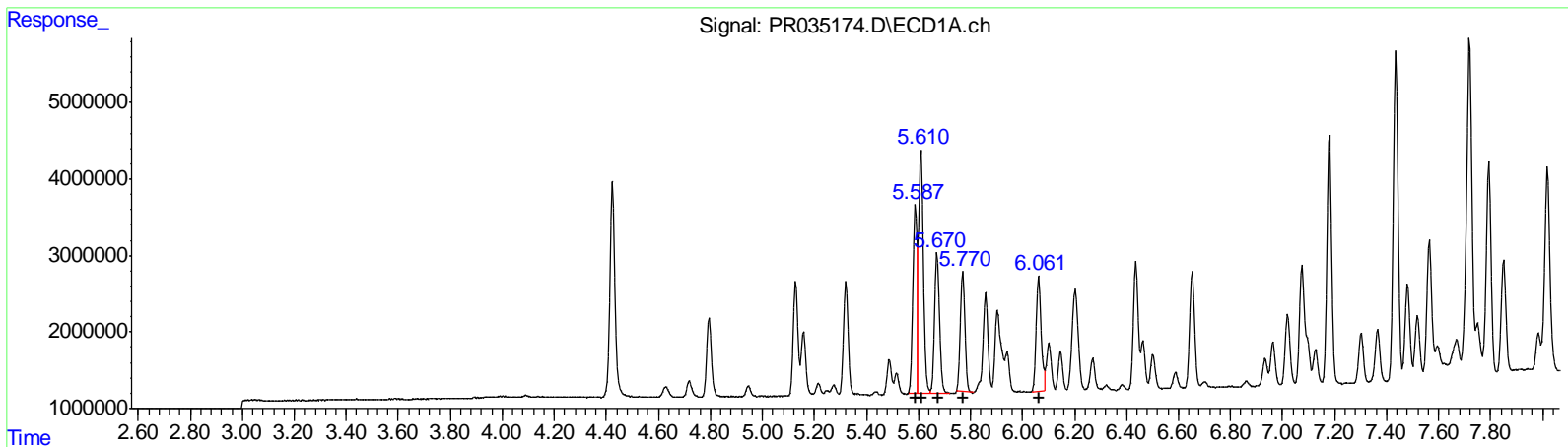
Instrument :
 ECD_R
 LabSampleID :
 AR1660341

Manual Integrations
 APPROVED

Sohil
 1/3/2019 11:07:20 AM

Integration File signal 1: autoint1.e
 Integration File signal 2: autoint2.e
 Quant Time: Jan 04 01:26:10 2019
 Quant Method : Z:\pestpcbsrv\HPCHEM1\ECD_R\Method\PR121818CLP.M
 Quant Title : GC EXTRACTABLES
 QLast Update : Tue Dec 18 01:56:32 2018
 Response via : Initial Calibration
 Integrator: ChemStation

Volume Inj. : 1 µl
 Signal #1 Phase : ZB MR1 Signal #2 Phase: ZB MR2
 Signal #1 Info : 30Mx0.32mmx 0.5µm Signal #2 Info : 30M x 0.32mm x 0.25µm



QEdit

(3) AR-1016-1 (L1)		
R.T.	Response	Conc
5.59	27495305	407.32
5.61	40424182	408.21
5.67	24301935	412.91
5.77	19571166	412.57
6.06	20147624	423.02
(3) AR-1016-1 #2 (L1)		
R.T.	Response	Conc
4.58	85114431	654.10
4.58	85114431	430.63
4.75	40293366	419.22
4.79	32322928	427.84
5.00	46592263	453.12

(+) = Expected Retention Time

Data Path : Z:\pestpcbsrv\HPCHEM1\ECD_R\Data\PR010219\
 Data File : PR035174.D
 Signal(s) : Signal #1: ECD1A.ch Signal #2: ECD2B.ch
 Acq On : 02 Jan 2019 13:18
 Operator : SM\SJ
 Sample : AR1660CCC400
 Misc :
 ALS Vial : 3 Sample Multiplier: 1

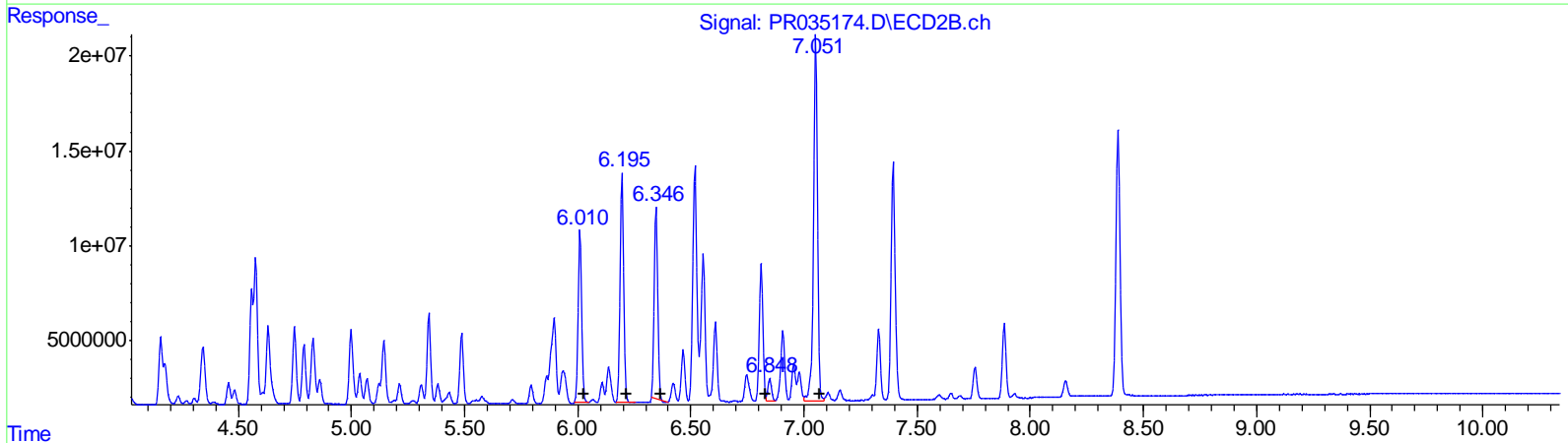
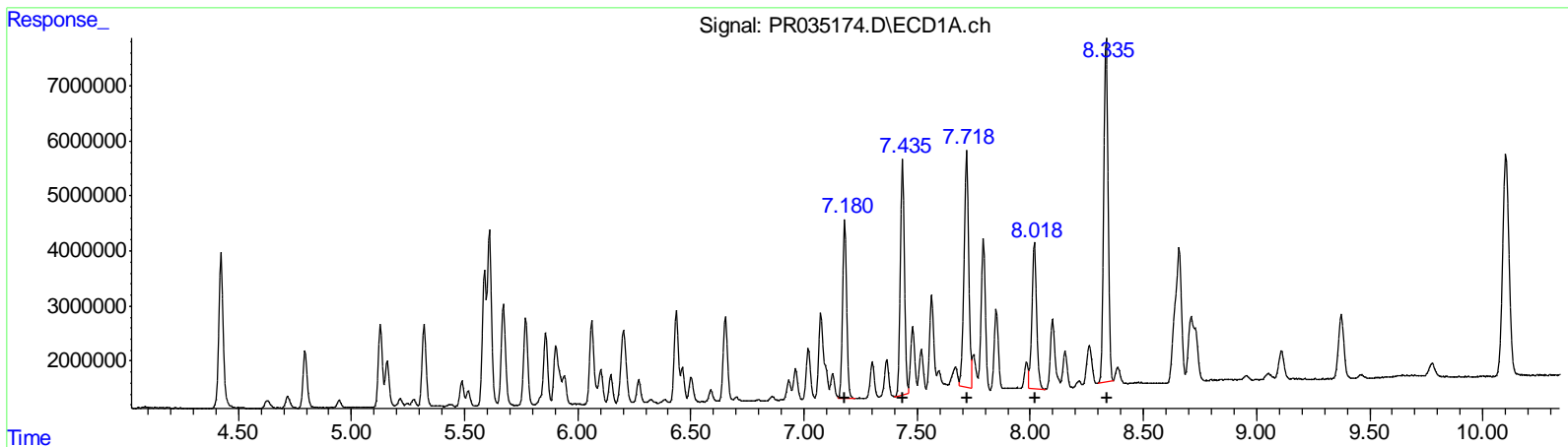
Instrument :
 ECD_R
 LabSampleId :
 AR1660341

Manual Integrations
 APPROVED

Sohil
 1/3/2019 11:07:20 AM

Integration File signal 1: autoint1.e
 Integration File signal 2: autoint2.e
 Quant Time: Jan 04 01:26:10 2019
 Quant Method : Z:\pestpcbsrv\HPCHEM1\ECD_R\Method\PR121818CLP.M
 Quant Title : GC EXTRACTABLES
 QLast Update : Tue Dec 18 01:56:32 2018
 Response via : Initial Calibration
 Integrator: ChemStation

Volume Inj. : 1 µl
 Signal #1 Phase : ZB MR1 Signal #2 Phase: ZB MR2
 Signal #1 Info : 30Mx0.32mmx 0.5µm Signal #2 Info : 30M x 0.32mm x 0.25µm



QEedit

(31) AR-1260-1 (L7)		
R.T.	Response	Conc
7.18	40379062	429.53
7.44	53828885	463.64
7.72	61470357	440.47
8.02	37632484	435.74
8.33	82901657	459.15
(31) AR-1260-1 #2 (L7)		
R.T.	Response	Conc
6.01	96839295	450.47
6.20	134015224	492.48
6.35	110159536	443.77
6.85	13596729	79.52
7.05	234569136	485.00

(+) = Expected Retention Time

Data Path : Z:\pestpcbsrv\HPCHEM1\ECD_R\Data\PR010219\
 Data File : PR035174.D
 Signal(s) : Signal #1: ECD1A.ch Signal #2: ECD2B.ch
 Acq On : 02 Jan 2019 13:18
 Operator : SM\SJ
 Sample : AR1660CCC400
 Misc :
 ALS Vial : 3 Sample Multiplier: 1

Instrument :
 ECD_R
 LabSampleId :
 AR1660341

Integration File signal 1: autoint1.e
 Integration File signal 2: autoint2.e
 Quant Time: Jan 03 03:33:17 2019
 Quant Method : Z:\pestpcbsrv\HPCHEM1\ECD_R\Method\PR121818CLP.M
 Quant Title : GC EXTRACTABLES
 QLast Update : Tue Dec 18 01:56:32 2018
 Response via : Initial Calibration
 Integrator: ChemStation

Manual Integrations
 APPROVED

Sohil
 1/3/2019 11:07:20 AM

Volume Inj. : 1 µl
 Signal #1 Phase : ZB MR1 Signal #2 Phase: ZB MR2
 Signal #1 Info : 30Mx0.32mmx 0.5µm Signal #2 Info : 30M x 0.32mm x 0.25µm

Compound	RT#1	RT#2	Resp#1	Resp#2	ng/ml	ng/ml

System Monitoring Compounds						
1) SA Tetrachlo...	4.423	3.500	37491281	77024366	19.275	22.095
2) SA Decachlor...	10.102	8.388	79085900	176.6E6	40.228	40.168
Target Compounds						
3) L1 AR-1016-1	5.588	4.559	27201085	58892299	402.960	452.584m
4) L1 AR-1016-2	5.610	4.577	40715942	81034862	411.160	409.991m
5) L1 AR-1016-3	5.671	4.748	24304396	43802877	412.949	455.729m
6) L1 AR-1016-4	5.770	4.790	19559733	34730494	412.332	459.708m
7) L1 AR-1016-5	6.062	4.998	20167831	46592263	423.449	453.118
31) L7 AR-1260-1	7.180	6.010	40478644	97840022	430.587	455.129m
32) L7 AR-1260-2	7.435	6.195	54523232	134.0E6	469.618	492.483
33) L7 AR-1260-3	7.718	6.346	64703894	115.9E6	463.640m	467.049m
34) L7 AR-1260-4	8.018	6.810	37717618	82051085	436.731	479.858m
35) L7 AR-1260-5	8.335	7.052	83758387	234.6E6	463.897	485.002

SJ
 01/03/19

(f)=RT Delta > 1/2 Window (#)=Amounts differ by > 25% (m)=manual int.