

Data Path : Z:\pestpcbsrv\HPCHEM1\ECD_R\Data\PR010521\
 Data File : PR049224.D
 Signal(s) : Signal #1: ECD1A.ch Signal #2: ECD2B.ch
 Acq On : 05 Jan 2021 22:40
 Operator : DD\AJ
 Sample : AR1268ICC400
 Misc :
 ALS Vial : 40 Sample Multiplier: 1

Instrument :
 ECD_R
 ClientSampleId :

Integration File signal 1: autoint1.e
 Integration File signal 2: autoint2.e
 Quant Time: Jan 06 05:49:11 2021
 Quant Method : Z:\pestpcbsrv\HPCHEM1\ECD_R\Method\PR010521CLP.M
 Quant Title : GC EXTRACTABLES
 QLast Update : Wed Jan 06 05:47:55 2021
 Response via : Initial Calibration
 Integrator: ChemStation

Volume Inj. : 1 µl
 Signal #1 Phase : ZB MR1 Signal #2 Phase: ZB MR2
 Signal #1 Info : 30Mx0.32mmx 0.5µm Signal #2 Info : 30M x 0.32mm x 0.25µm

Compound	RT#1	RT#2	Resp#1	Resp#2	ng/ml	ng/ml

System Monitoring Compounds						
1) SA Tetrachlo...	4.667	3.853	56227989	83372884	20.000	20.000
2) SA Decachlor...	10.554	8.897	187.9E6	683.5E6	40.000	40.000
Target Compounds						
41) L9 AR-1268-1	8.964	7.759	155.0E6	792.4E6	400.000	400.000
42) L9 AR-1268-2	9.063	7.825	146.4E6	672.0E6	400.000	400.000
43) L9 AR-1268-3	9.304	8.031	126.6E6	593.9E6	400.000	400.000
44) L9 AR-1268-4	9.757	8.329	55686239	229.0E6	400.000	400.000
45) L9 AR-1268-5	10.195	8.633	416.9E6	1749.8E6	400.000	400.000

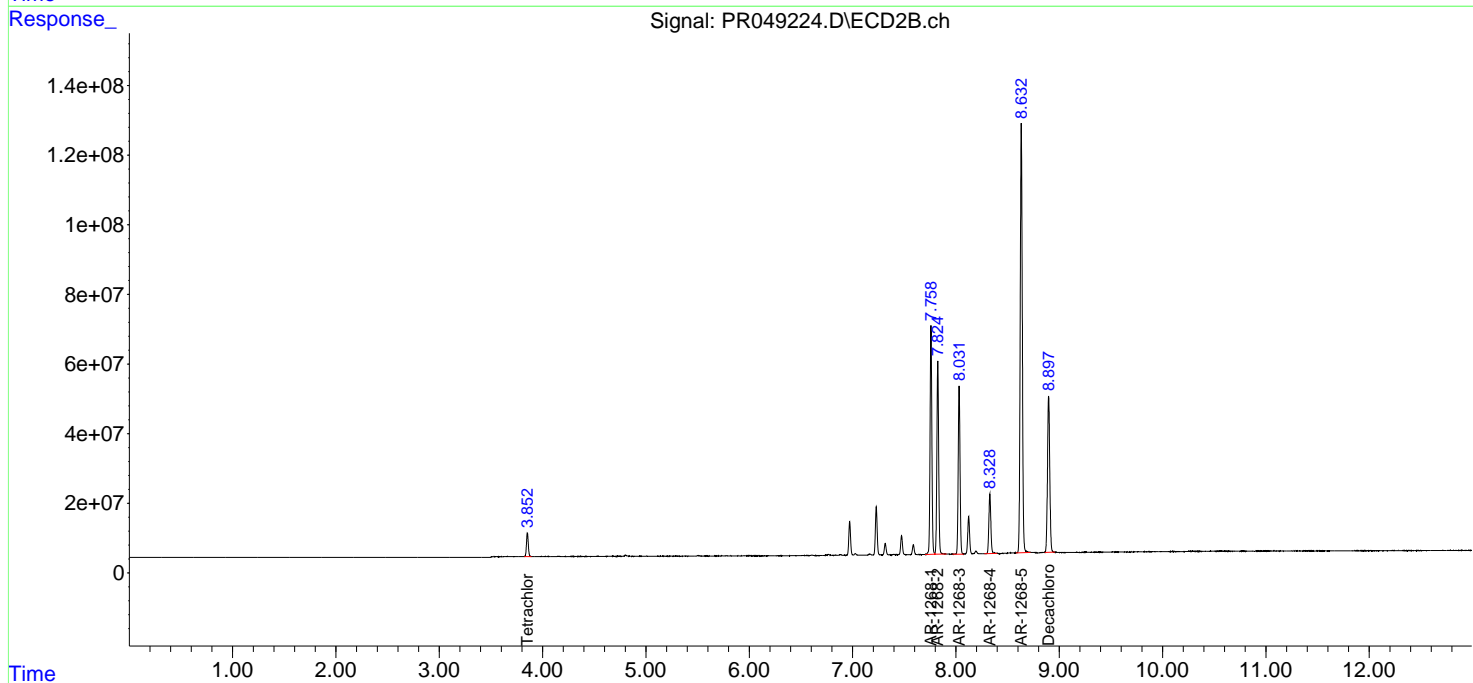
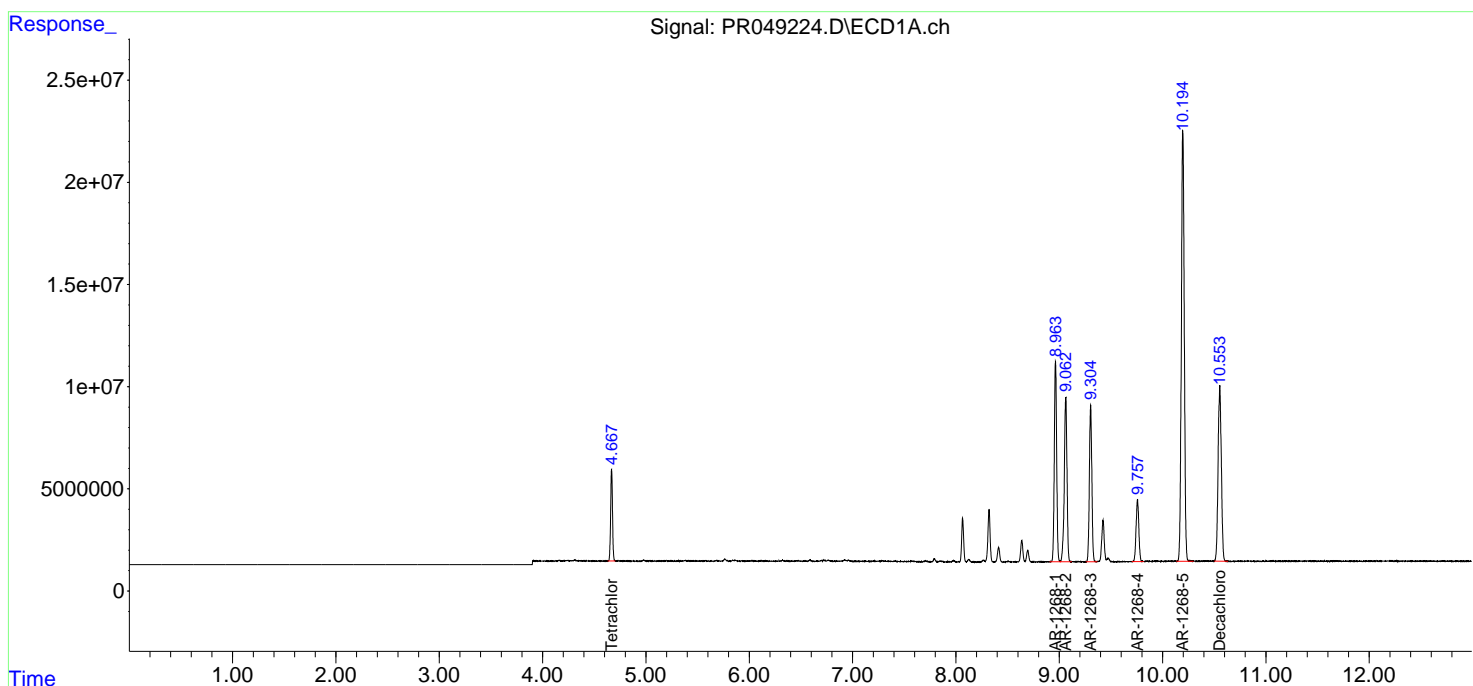
(f)=RT Delta > 1/2 Window (#)=Amounts differ by > 25% (m)=manual int.

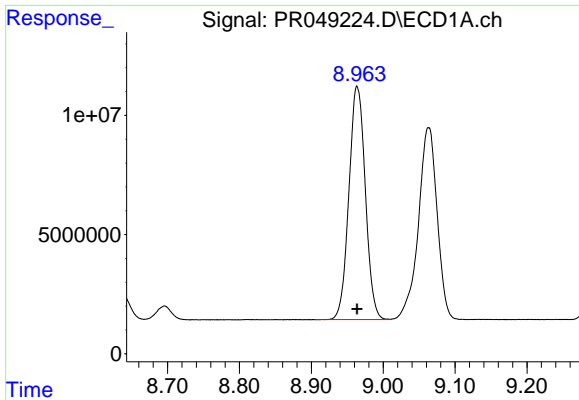
Data Path : Z:\pestpcbsrv\HPCHEM1\ECD_R\Data\PR010521\
 Data File : PR049224.D
 Signal(s) : Signal #1: ECD1A.ch Signal #2: ECD2B.ch
 Acq On : 05 Jan 2021 22:40
 Operator : DD\AJ
 Sample : AR1268ICC400
 Misc :
 ALS Vial : 40 Sample Multiplier: 1

Instrument :
 ECD_R
 ClientSampled :

Integration File signal 1: autoint1.e
 Integration File signal 2: autoint2.e
 Quant Time: Jan 06 05:49:11 2021
 Quant Method : Z:\pestpcbsrv\HPCHEM1\ECD_R\Method\PR010521CLP.M
 Quant Title : GC EXTRACTABLES
 QLast Update : Wed Jan 06 05:47:55 2021
 Response via : Initial Calibration
 Integrator: ChemStation

Volume Inj. : 1 µl
 Signal #1 Phase : ZB MR1 Signal #2 Phase: ZB MR2
 Signal #1 Info : 30Mx0.32mmx 0.5µm Signal #2 Info : 30M x 0.32mm x 0.25µm

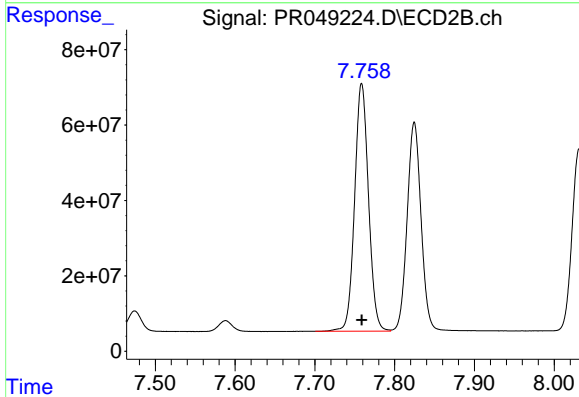




#41 AR-1268-1

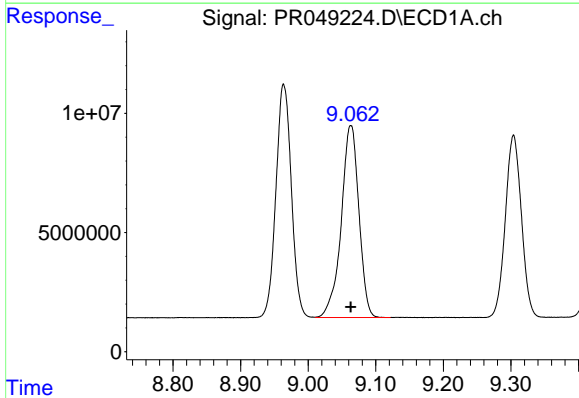
R.T.: 8.964 min
 Delta R.T.: 0.000 min
 Response: 154965171
 Conc: 400.00 ng/ml

Instrument :
 ECD_R
 ClientSampleId :



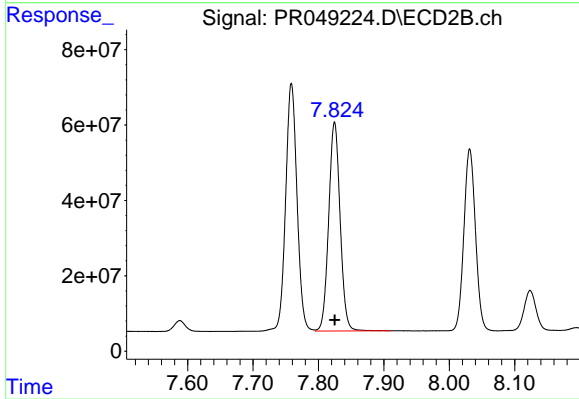
#41 AR-1268-1

R.T.: 7.759 min
 Delta R.T.: 0.000 min
 Response: 792449361
 Conc: 400.00 ng/ml



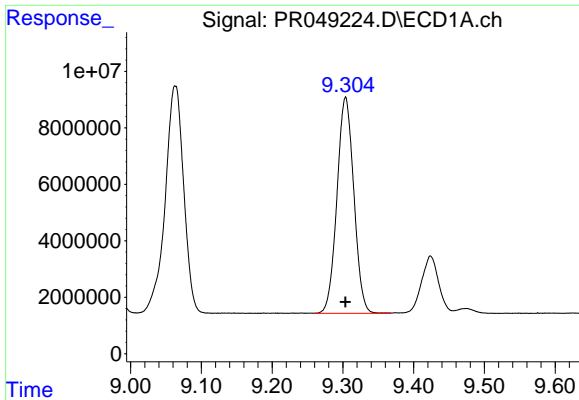
#42 AR-1268-2

R.T.: 9.063 min
 Delta R.T.: 0.000 min
 Response: 146366232
 Conc: 400.00 ng/ml



#42 AR-1268-2

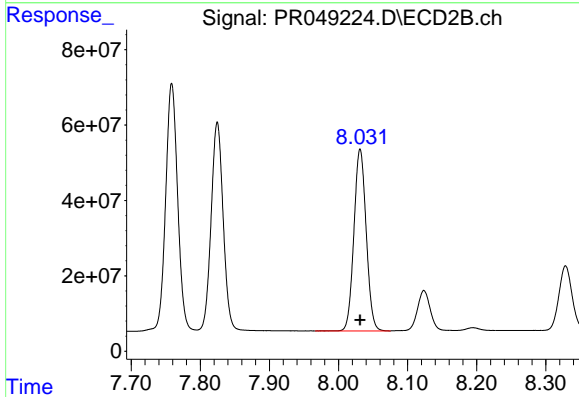
R.T.: 7.825 min
 Delta R.T.: 0.000 min
 Response: 671967330
 Conc: 400.00 ng/ml



#43 AR-1268-3

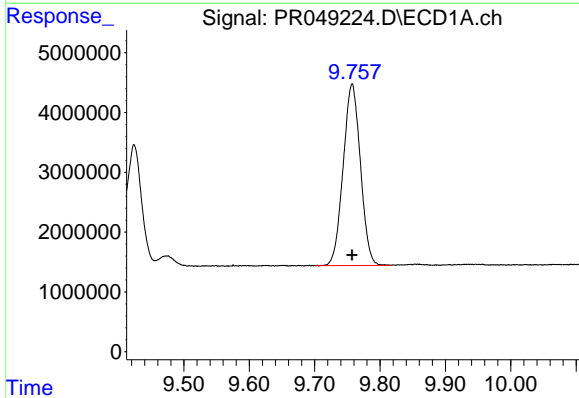
R.T.: 9.304 min
 Delta R.T.: 0.000 min
 Response: 126627240
 Conc: 400.00 ng/ml

Instrument :
 ECD_R
 ClientSampled :



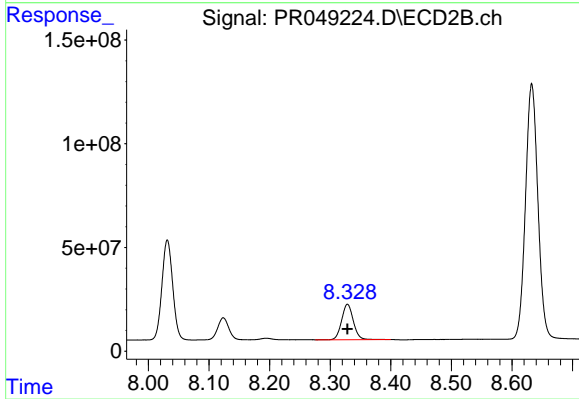
#43 AR-1268-3

R.T.: 8.031 min
 Delta R.T.: 0.000 min
 Response: 593887412
 Conc: 400.00 ng/ml



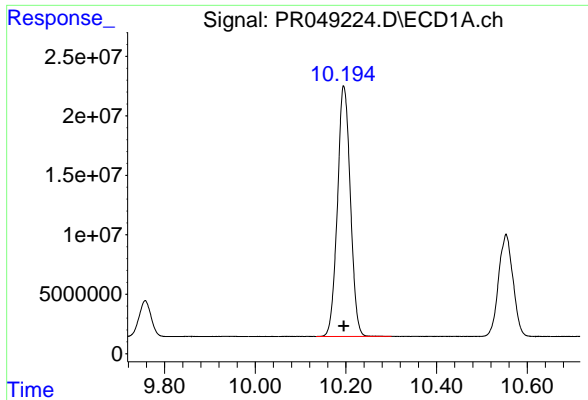
#44 AR-1268-4

R.T.: 9.757 min
 Delta R.T.: 0.000 min
 Response: 55686239
 Conc: 400.00 ng/ml



#44 AR-1268-4

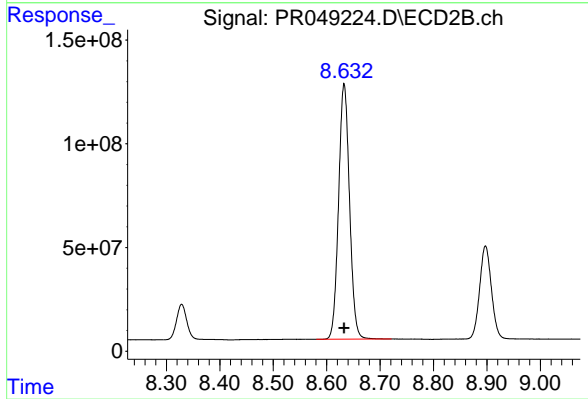
R.T.: 8.329 min
 Delta R.T.: 0.000 min
 Response: 228996122
 Conc: 400.00 ng/ml



#45 AR-1268-5

R.T.: 10.195 min
Delta R.T.: 0.000 min
Response: 416925114
Conc: 400.00 ng/ml

Instrument :
ECD_R
ClientSampleId :



#45 AR-1268-5

R.T.: 8.633 min
Delta R.T.: 0.000 min
Response: 1749769204
Conc: 400.00 ng/ml