

Data Path : Z:\pestpcbsrv\HPCHEM1\ECD_R\Data\PR010523\
 Data File : PR058788.D
 Signal(s) : Signal #1: ECD1A.ch Signal #2: ECD2B.ch
 Acq On : 05 Jan 2023 21:53
 Operator : YP\AJ
 Sample : AIBLK63
 Misc :
 ALS Vial : 2 Sample Multiplier: 1

Instrument :
 ECD_R
 ClientSampleId :

Integration File signal 1: autoint1.e
 Integration File signal 2: autoint2.e
 Quant Time: Jan 06 03:58:55 2023
 Quant Method : Z:\pestpcbsrv\HPCHEM1\ECD_R\Method\PR121422CLP.M
 Quant Title : GC EXTRACTABLES
 QLast Update : Thu Dec 15 03:47:13 2022
 Response via : Initial Calibration
 Integrator: ChemStation

Volume Inj. : 1 µl
 Signal #1 Phase : ZB MR1 Signal #2 Phase: ZB MR2
 Signal #1 Info : 30Mx0.32mmx 0.5µm Signal #2 Info : 30M x 0.32mm x 0.25µm

Compound	RT#1	RT#2	Resp#1	Resp#2	ng/ml	ng/ml
System Monitoring Compounds						
1) SA Tetrachlo...	3.690	2.912	65229776	74912288	21.626	22.540
2) SA Decachlor...	9.653	8.150	80948788	117.1E6	44.191	42.919
Target Compounds						
3) L1 AR-1016-1	4.912	4.020	69543	54568	0.827	0.496 #
4) L1 AR-1016-2	4.912	4.048	69543	231590	0.608	1.529 #
5) L1 AR-1016-3	5.028	4.230	160111	186988	2.152	2.304
6) L1 AR-1016-4	5.145	4.298	106478	539031	1.763	8.625 #
7) L1 AR-1016-5	5.368f	4.484	115719	1411192	1.982	16.710 #
8) L2 AR-1221-1	0.000	3.186f	0	29385	N.D.	0.773 #
9) L2 AR-1221-2	4.005	3.214	1033078	1024916	38.167	37.590
10) L2 AR-1221-3	0.000	3.308	0	50506	N.D.	0.562 #
11) L3 AR-1232-1	0.000	3.308	0	50506	N.D.	0.674 #
12) L3 AR-1232-2	0.000	4.048	0	231590	N.D.	3.251 #
13) L3 AR-1232-3	4.912	4.230	69543	186988	1.225	4.970 #
14) L3 AR-1232-4	5.145	4.298	106478	539031	3.590	16.358 #
15) L3 AR-1232-5	5.235	4.484	71875	1411192	3.292	36.983 #
16) L4 AR-1242-1	4.912	4.020	69543	54568	0.924	0.560 #
17) L4 AR-1242-2	4.912	4.048	69543	231590	0.680	1.732 #
18) L4 AR-1242-3	5.028	4.230	160111	186988	2.397	2.603
19) L4 AR-1242-4	5.145	4.298	106478	539031	1.975	7.916 #
20) L4 AR-1242-5	5.905	4.881	176358	2485192	3.348	27.828 #
21) L5 AR-1248-1	4.912	4.020	69543	54568	1.194	0.735 #
22) L5 AR-1248-2	5.235	4.298	71875	539031	0.987	5.400 #
23) L5 AR-1248-3	5.368f	4.298	115719	539031	1.374	5.296 #
24) L5 AR-1248-4	5.898	4.484	557432	1411192	6.134	11.261 #
25) L5 AR-1248-5	5.905	4.881	176358	2485192	1.999	19.737 #
26) L6 AR-1254-1	5.839	4.881	2161591	2485192	25.065	13.822 #
27) L6 AR-1254-2	6.074	4.983f	411571	7167	3.170	0.047 #
28) L6 AR-1254-3	6.468	5.451	654369	706154	4.801	2.775 #
29) L6 AR-1254-4	6.817	5.675	1384721	243307	13.507	1.526 #
30) L6 AR-1254-5	0.000	6.125	0	430052	N.D.	1.890 #
31) L7 AR-1260-1	6.633	5.556	1483649	763250	14.250	4.433 #
32) L7 AR-1260-2	6.925	5.815	311604	286146	2.516	1.361 #
33) L7 AR-1260-3	0.000	5.947	0	738235	N.D.	3.712 #
34) L7 AR-1260-4	0.000	6.447	0	231956	N.D.	1.397 #
35) L7 AR-1260-5	7.885	6.727	424568	1341022	2.043	3.401 #
36) L8 AR-1262-1	0.000	6.160	0	198317	N.D.	0.822 #
37) L8 AR-1262-2	7.885	6.447	424568	231956	1.760	1.059 #
38) L8 AR-1262-3	0.000	7.027	0	567479	N.D.	3.333 #
39) L8 AR-1262-4	8.298	7.089	300178	495288	3.722	1.521 #
40) L8 AR-1262-5	8.940	7.620	343505	170947	3.651	1.155 #
41) L9 AR-1268-1	0.000	7.027	0	567479	N.D.	1.132 #

Data Path : Z:\pestpcbsrv\HPCHEM1\ECD_R\Data\PR010523\
 Data File : PR058788.D
 Signal(s) : Signal #1: ECD1A.ch Signal #2: ECD2B.ch
 Acq On : 05 Jan 2023 21:53
 Operator : YP\AJ
 Sample : AIBLK63
 Misc :
 ALS Vial : 2 Sample Multiplier: 1

Instrument :
 ECD_R
 ClientSampleId :

Integration File signal 1: autoint1.e
 Integration File signal 2: autoint2.e
 Quant Time: Jan 06 03:58:55 2023
 Quant Method : Z:\pestpcbsrv\HPCHEM1\ECD_R\Method\PR121422CLP.M
 Quant Title : GC EXTRACTABLES
 QLast Update : Thu Dec 15 03:47:13 2022
 Response via : Initial Calibration
 Integrator: ChemStation

Volume Inj. : 1 µl
 Signal #1 Phase : ZB MR1 Signal #2 Phase: ZB MR2
 Signal #1 Info : 30Mx0.32mmx 0.5µm Signal #2 Info : 30M x 0.32mm x 0.25µm

	Compound	RT#1	RT#2	Resp#1	Resp#2	ng/ml	ng/ml
42)	L9 AR-1268-2	8.298	7.089	300178	495288	1.181	1.094
43)	L9 AR-1268-3	8.538	7.299	357690	579210	1.633	1.514
44)	L9 AR-1268-4	8.940	7.620	343505	170947	3.409	1.066 #
45)	L9 AR-1268-5	9.338	7.910	584789	833869	0.825	0.689

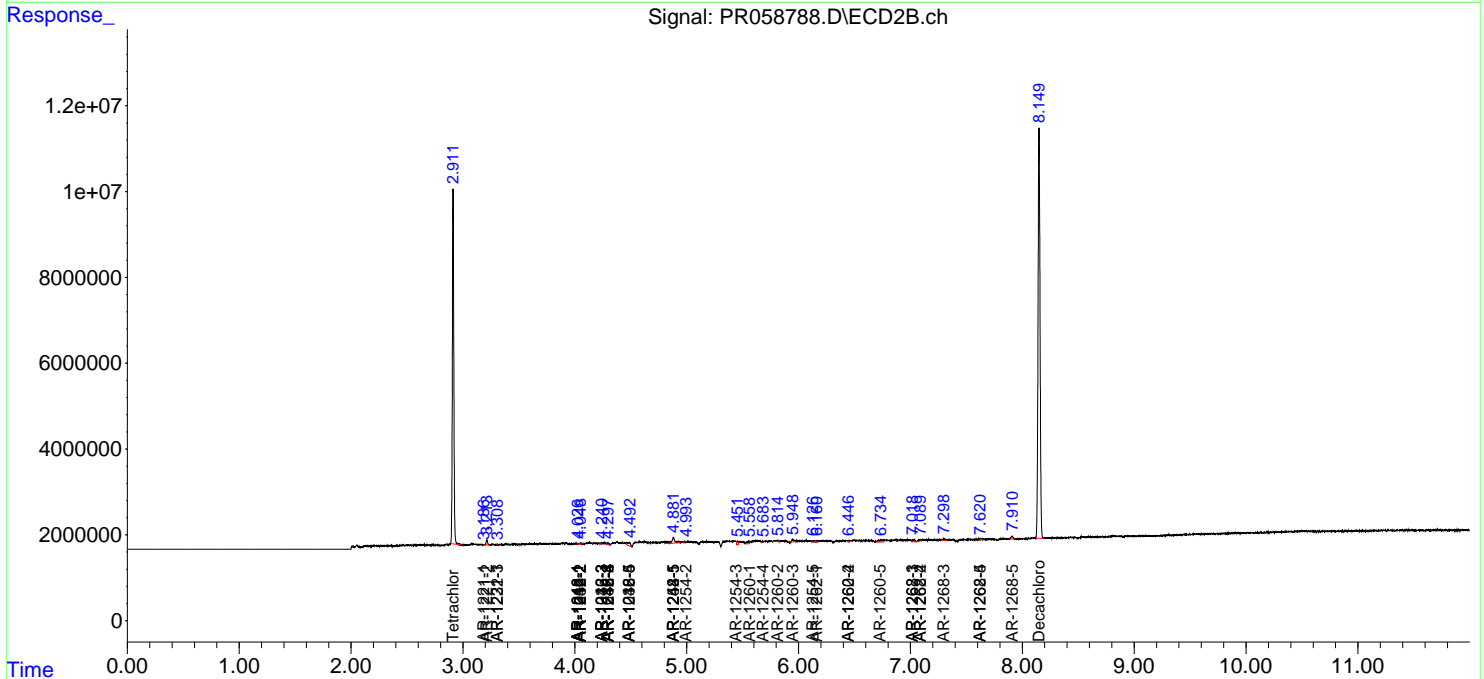
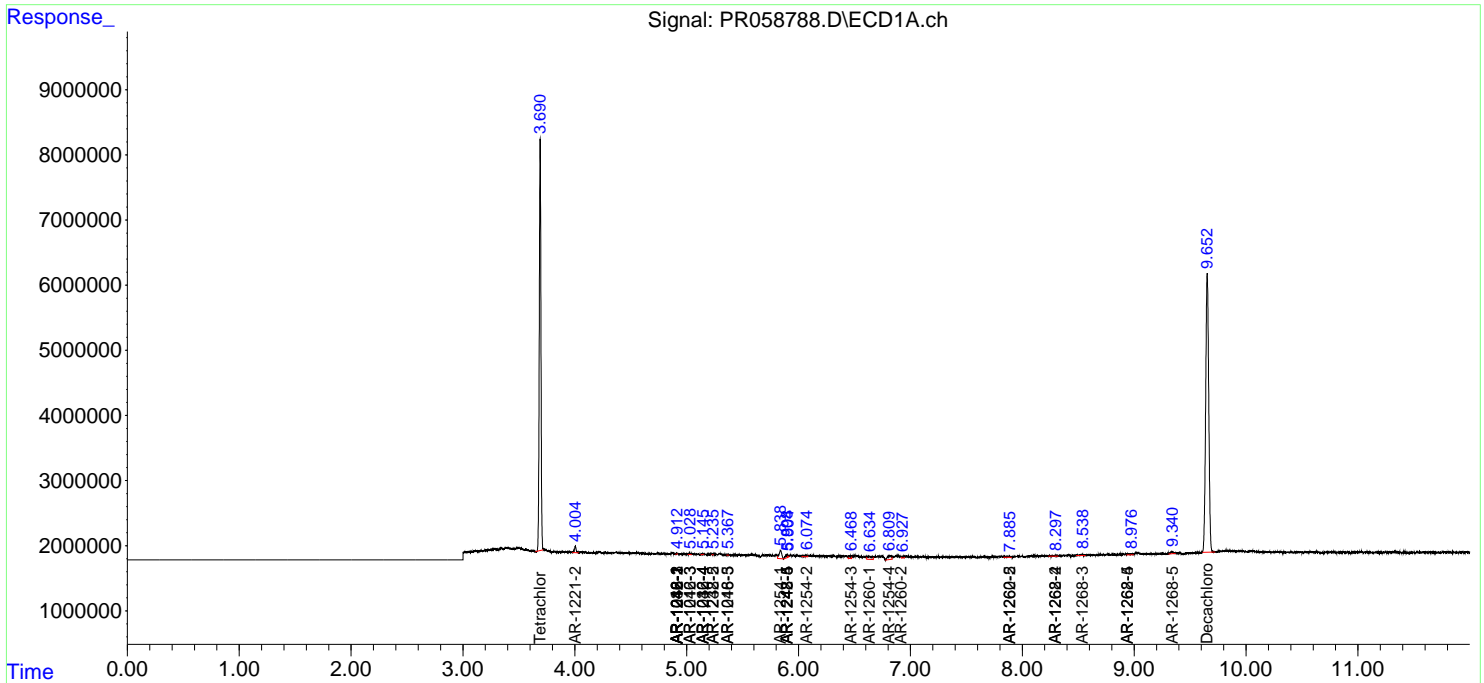
(f)=RT Delta > 1/2 Window (#)=Amounts differ by > 25% (m)=manual int.

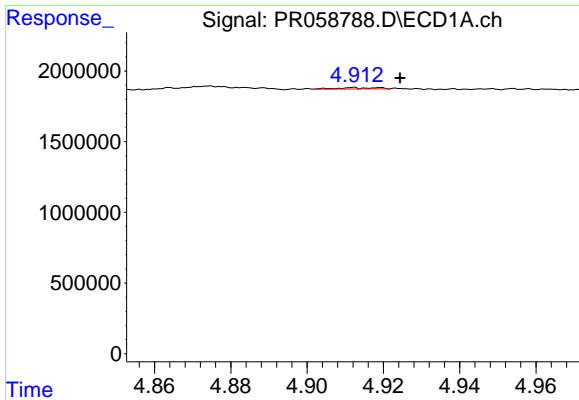
Data Path : Z:\pestpcbsrv\HPCHEM1\ECD_R\Data\PR010523\
 Data File : PR058788.D
 Signal(s) : Signal #1: ECD1A.ch Signal #2: ECD2B.ch
 Acq On : 05 Jan 2023 21:53
 Operator : YP\AJ
 Sample : AIBLK63
 Misc :
 ALS Vial : 2 Sample Multiplier: 1

Instrument :
 ECD_R
 ClientSampleId :

Integration File signal 1: autoint1.e
 Integration File signal 2: autoint2.e
 Quant Time: Jan 06 03:58:55 2023
 Quant Method : Z:\pestpcbsrv\HPCHEM1\ECD_R\Method\PR121422CLP.M
 Quant Title : GC EXTRACTABLES
 QLast Update : Thu Dec 15 03:47:13 2022
 Response via : Initial Calibration
 Integrator: ChemStation

Volume Inj. : 1 µl
 Signal #1 Phase : ZB MR1 Signal #2 Phase: ZB MR2
 Signal #1 Info : 30Mx0.32mmx 0.5µm Signal #2 Info : 30M x 0.32mm x 0.25µm

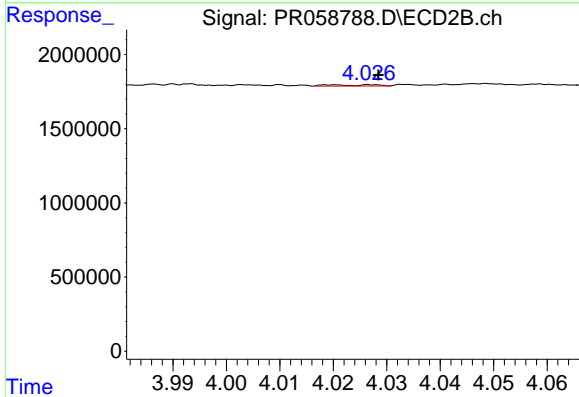




#3 AR-1016-1

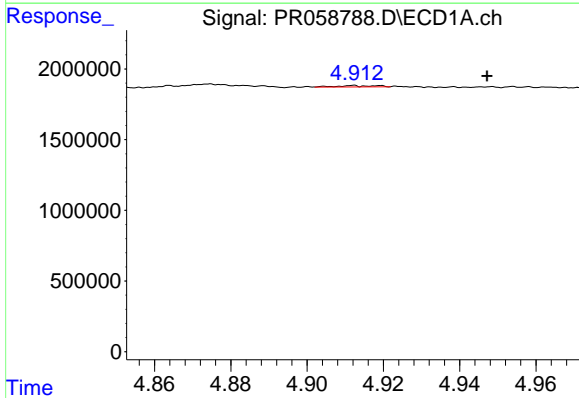
R.T.: 4.912 min
 Delta R.T.: -0.012 min
 Response: 69543
 Conc: 0.83 ng/ml

Instrument :
 ECD_R
 ClientSampleId :



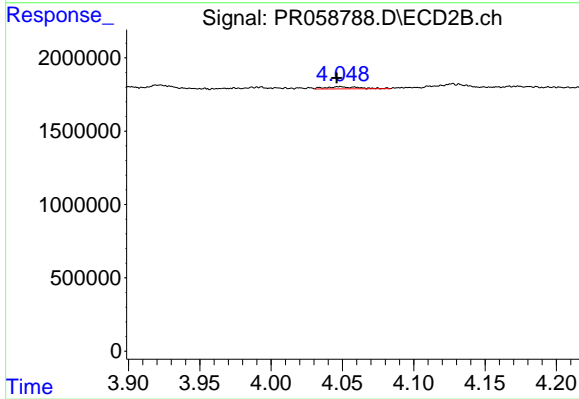
#3 AR-1016-1

R.T.: 4.020 min
 Delta R.T.: -0.008 min
 Response: 54568
 Conc: 0.50 ng/ml



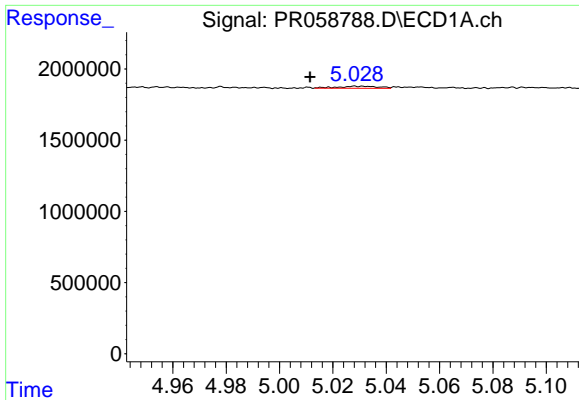
#4 AR-1016-2

R.T.: 4.912 min
 Delta R.T.: -0.035 min
 Response: 69543
 Conc: 0.61 ng/ml



#4 AR-1016-2

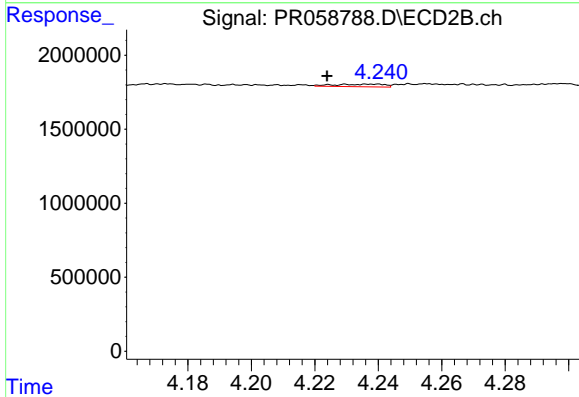
R.T.: 4.048 min
 Delta R.T.: 0.002 min
 Response: 231590
 Conc: 1.53 ng/ml



#5 AR-1016-3

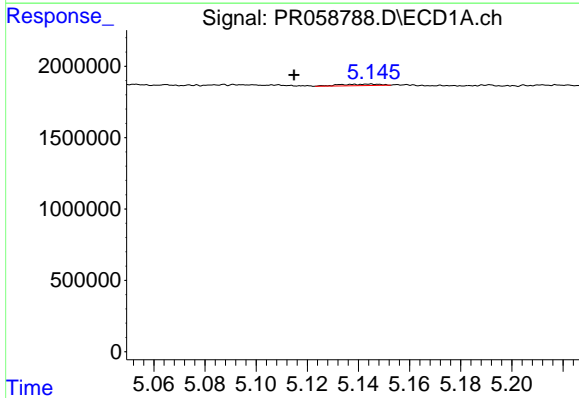
R.T.: 5.028 min
 Delta R.T.: 0.017 min
 Response: 160111
 Conc: 2.15 ng/ml

Instrument :
 ECD_R
 ClientSampleId :



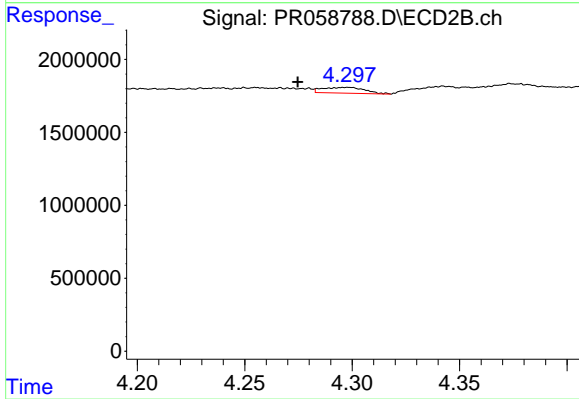
#5 AR-1016-3

R.T.: 4.230 min
 Delta R.T.: 0.006 min
 Response: 186988
 Conc: 2.30 ng/ml



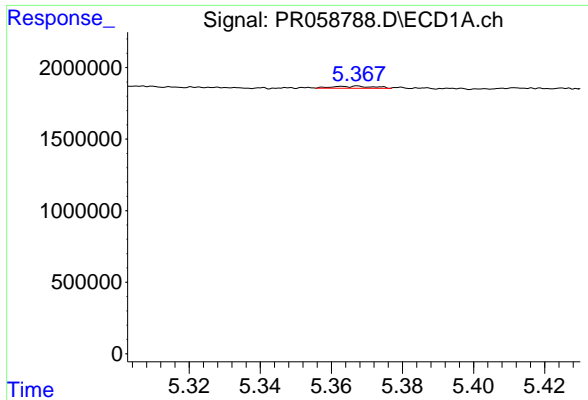
#6 AR-1016-4

R.T.: 5.145 min
 Delta R.T.: 0.030 min
 Response: 106478
 Conc: 1.76 ng/ml



#6 AR-1016-4

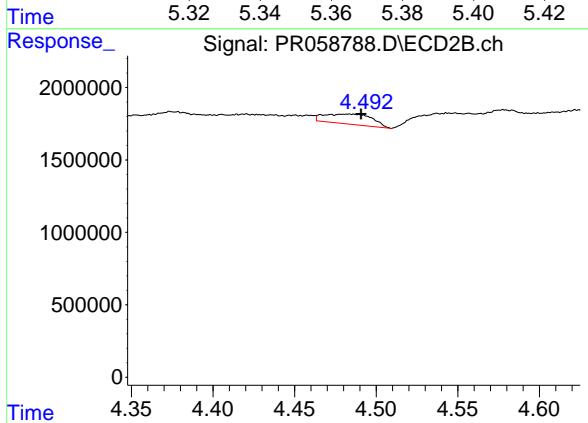
R.T.: 4.298 min
 Delta R.T.: 0.023 min
 Response: 539031
 Conc: 8.62 ng/ml



#7 AR-1016-5

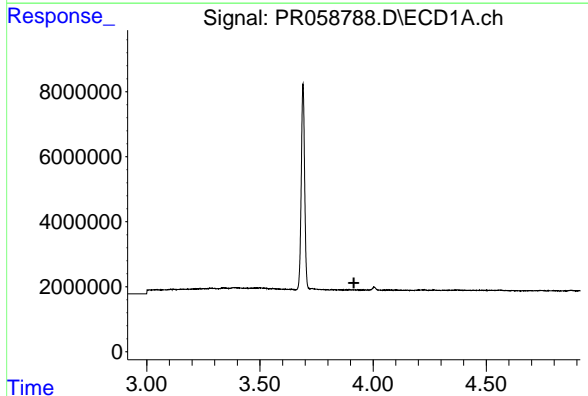
R.T.: 5.368 min
 Delta R.T.: -0.066 min
 Response: 115719
 Conc: 1.98 ng/ml

Instrument :
 ECD_R
 ClientSampleId :



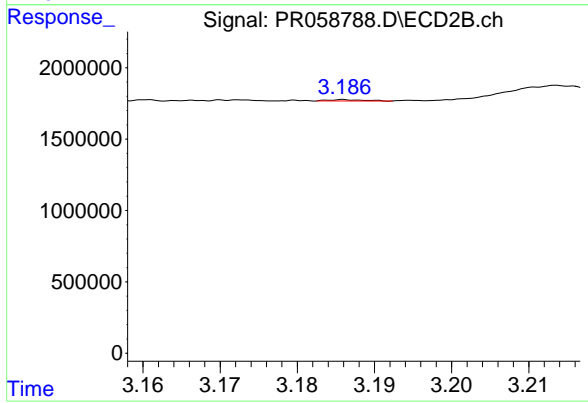
#7 AR-1016-5

R.T.: 4.484 min
 Delta R.T.: -0.007 min
 Response: 1411192
 Conc: 16.71 ng/ml



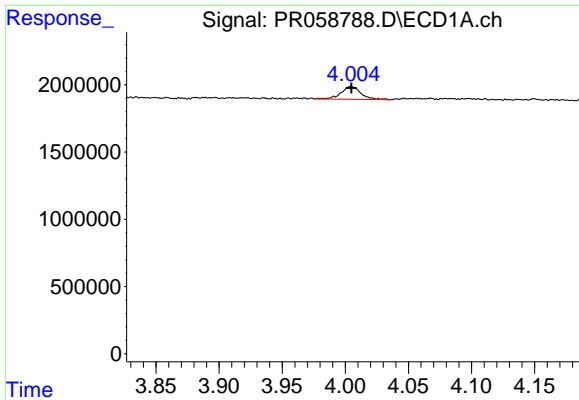
#8 AR-1221-1

R.T.: 0.000 min
 Exp R.T. : 3.915 min
 Response: 0
 Conc: N.D.



#8 AR-1221-1

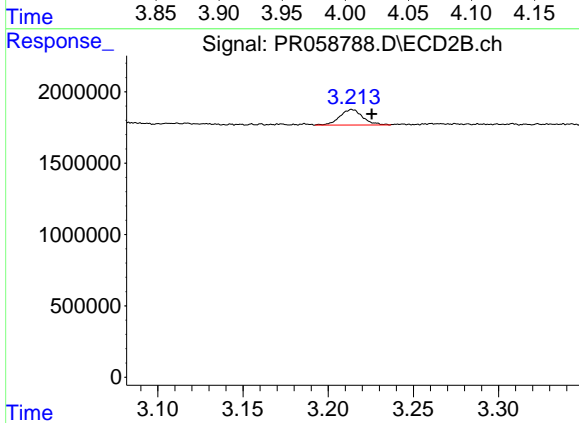
R.T.: 3.186 min
 Delta R.T.: 0.046 min
 Response: 29385
 Conc: 0.77 ng/ml



#9 AR-1221-2

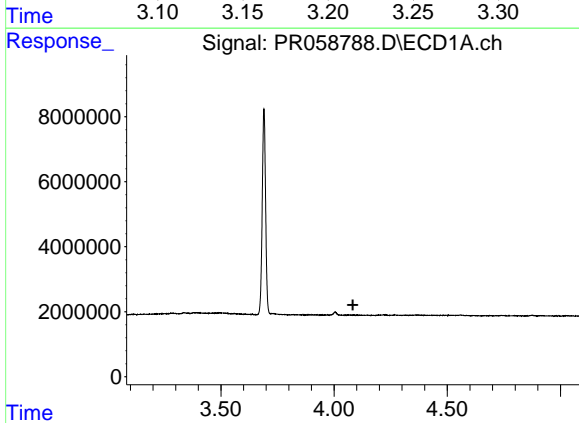
R.T.: 4.005 min
 Delta R.T.: 0.000 min
 Response: 1033078
 Conc: 38.17 ng/ml

Instrument :
 ECD_R
 ClientSampleId :



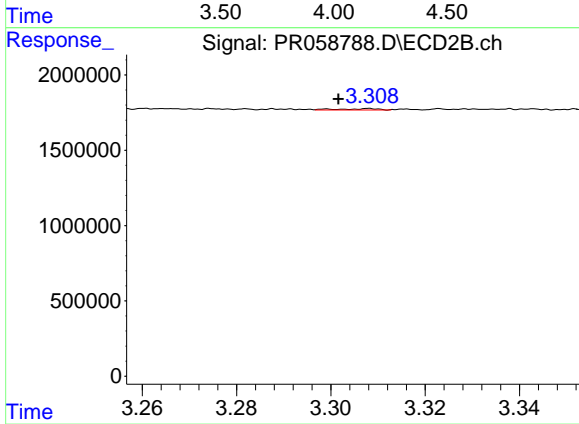
#9 AR-1221-2

R.T.: 3.214 min
 Delta R.T.: -0.011 min
 Response: 1024916
 Conc: 37.59 ng/ml



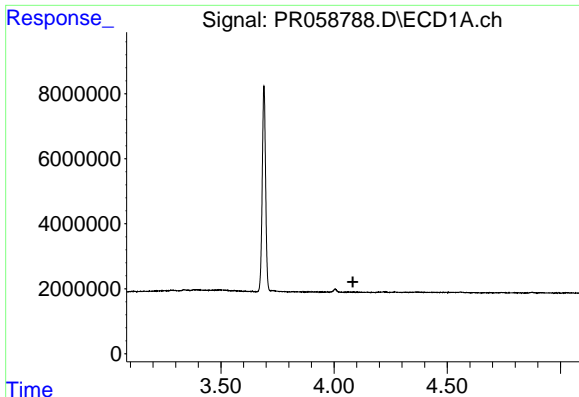
#10 AR-1221-3

R.T.: 0.000 min
 Exp R.T. : 4.083 min
 Response: 0
 Conc: N.D.



#10 AR-1221-3

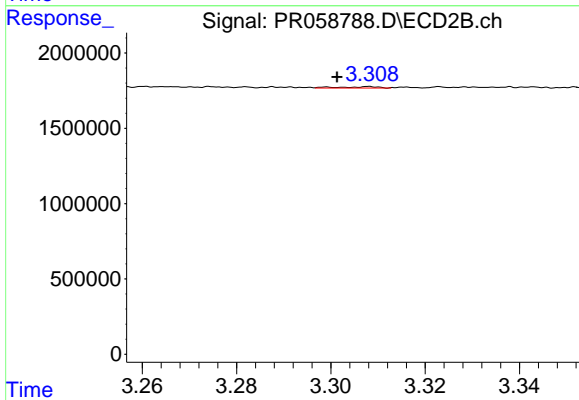
R.T.: 3.308 min
 Delta R.T.: 0.007 min
 Response: 50506
 Conc: 0.56 ng/ml



#11 AR-1232-1

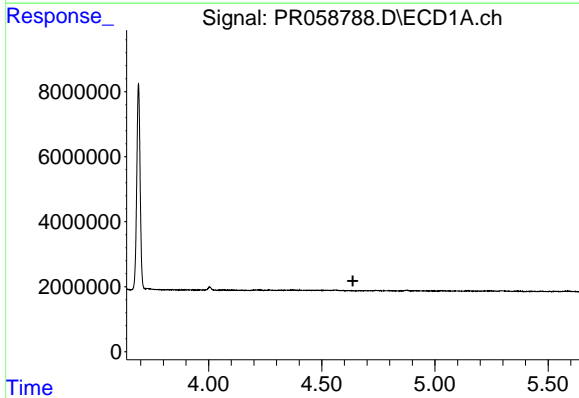
R.T.: 0.000 min
 Exp R.T. : 4.083 min
 Response: 0
 Conc: N.D.

Instrument :
 ECD_R
 ClientSampleId :



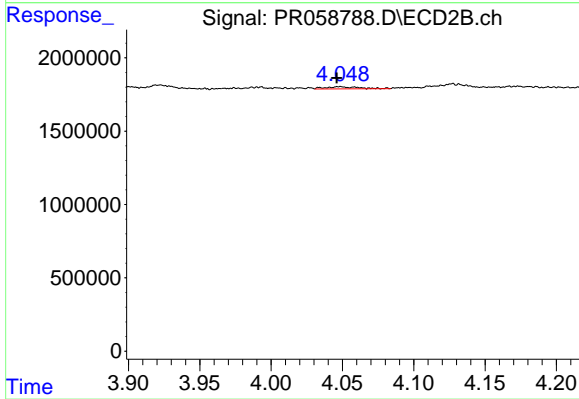
#11 AR-1232-1

R.T.: 3.308 min
 Delta R.T.: 0.007 min
 Response: 50506
 Conc: 0.67 ng/ml



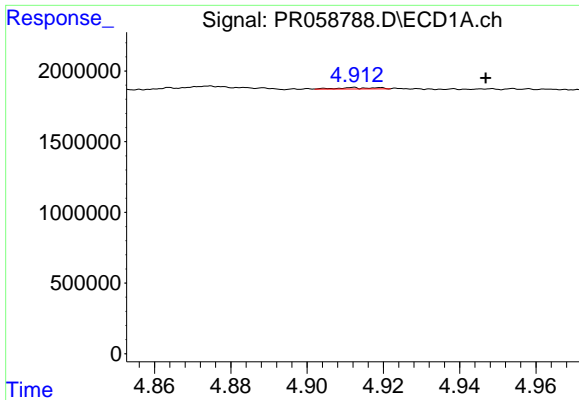
#12 AR-1232-2

R.T.: 0.000 min
 Exp R.T. : 4.637 min
 Response: 0
 Conc: N.D.



#12 AR-1232-2

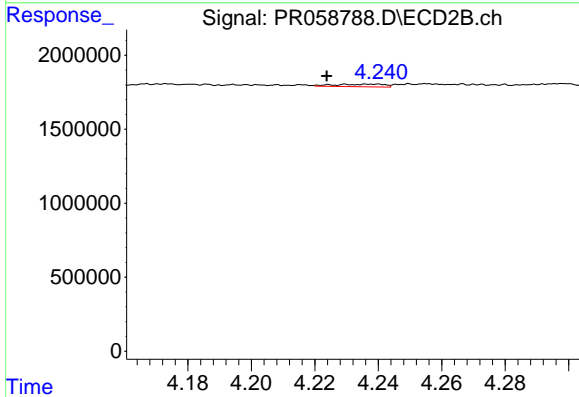
R.T.: 4.048 min
 Delta R.T.: 0.002 min
 Response: 231590
 Conc: 3.25 ng/ml



#13 AR-1232-3

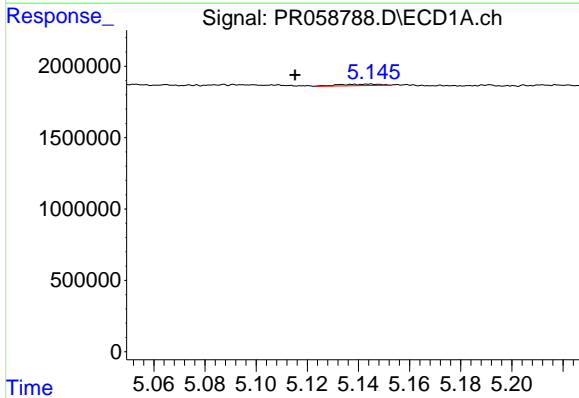
R.T.: 4.912 min
 Delta R.T.: -0.035 min
 Response: 69543
 Conc: 1.22 ng/ml

Instrument :
 ECD_R
 ClientSampleId :



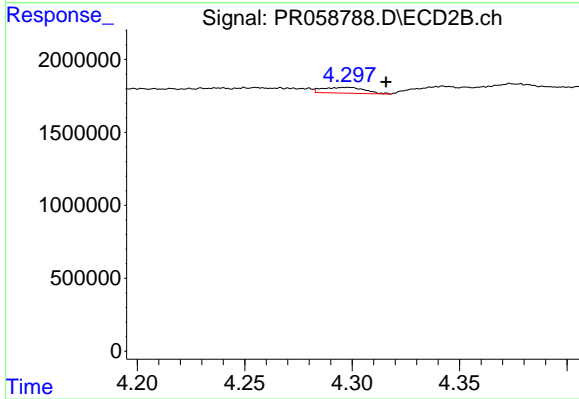
#13 AR-1232-3

R.T.: 4.230 min
 Delta R.T.: 0.006 min
 Response: 186988
 Conc: 4.97 ng/ml



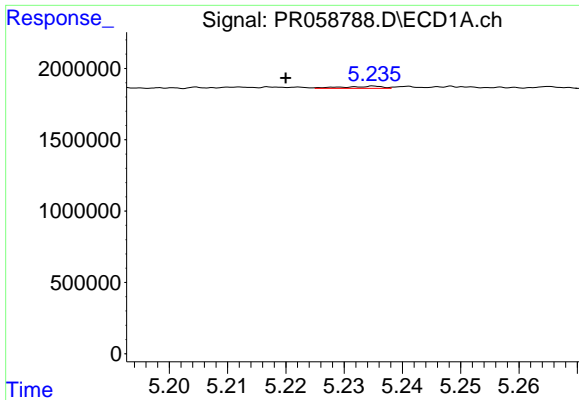
#14 AR-1232-4

R.T.: 5.145 min
 Delta R.T.: 0.030 min
 Response: 106478
 Conc: 3.59 ng/ml



#14 AR-1232-4

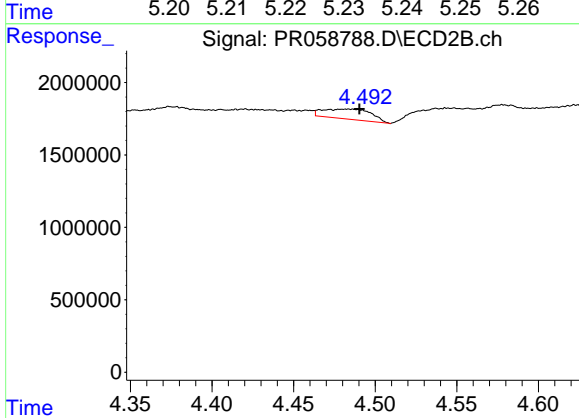
R.T.: 4.298 min
 Delta R.T.: -0.018 min
 Response: 539031
 Conc: 16.36 ng/ml



#15 AR-1232-5

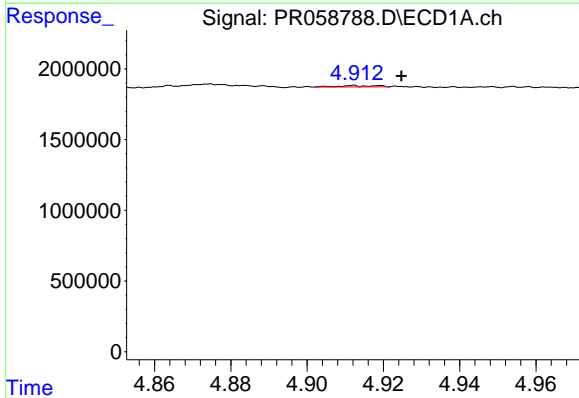
R.T.: 5.235 min
 Delta R.T.: 0.015 min
 Response: 71875
 Conc: 3.29 ng/ml

Instrument :
 ECD_R
 ClientSampleId :



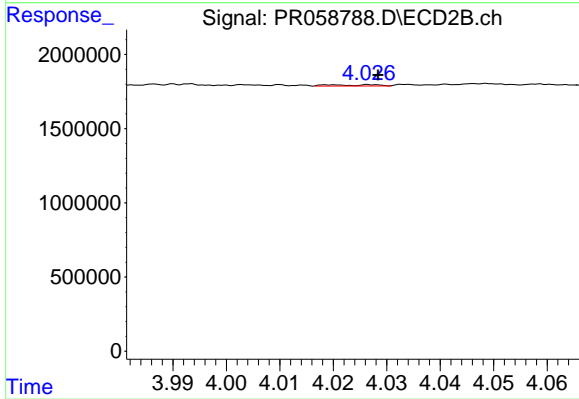
#15 AR-1232-5

R.T.: 4.484 min
 Delta R.T.: -0.007 min
 Response: 1411192
 Conc: 36.98 ng/ml



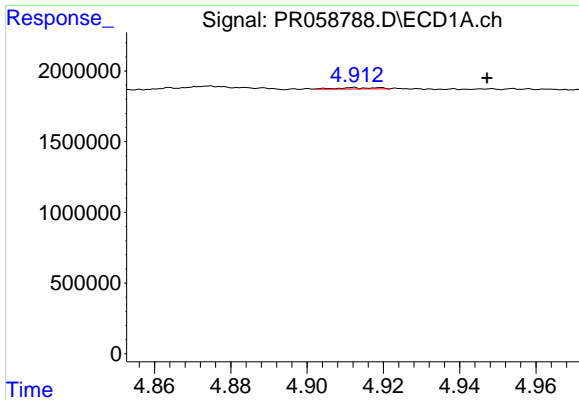
#16 AR-1242-1

R.T.: 4.912 min
 Delta R.T.: -0.013 min
 Response: 69543
 Conc: 0.92 ng/ml



#16 AR-1242-1

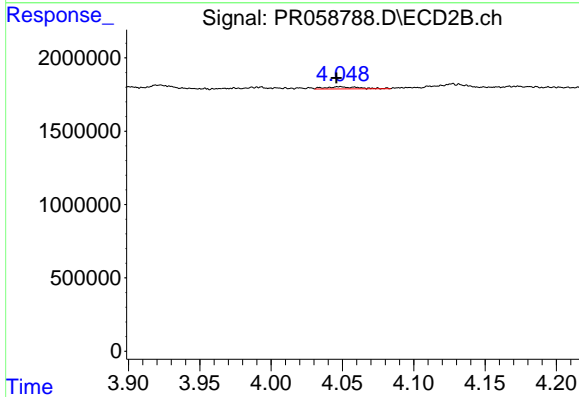
R.T.: 4.020 min
 Delta R.T.: -0.008 min
 Response: 54568
 Conc: 0.56 ng/ml



#17 AR-1242-2

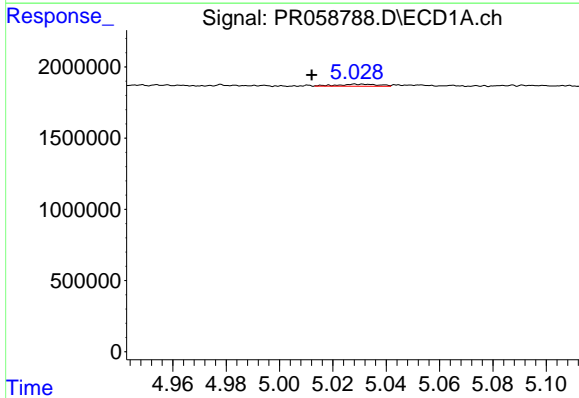
R.T.: 4.912 min
 Delta R.T.: -0.035 min
 Response: 69543
 Conc: 0.68 ng/ml

Instrument :
 ECD_R
 ClientSampleId :



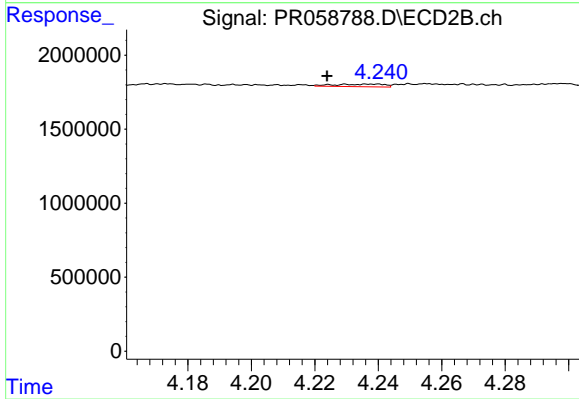
#17 AR-1242-2

R.T.: 4.048 min
 Delta R.T.: 0.002 min
 Response: 231590
 Conc: 1.73 ng/ml



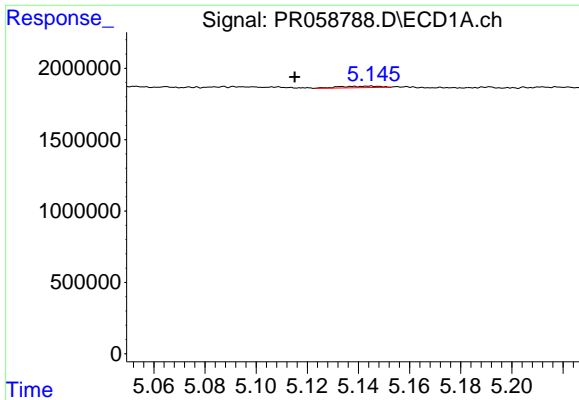
#18 AR-1242-3

R.T.: 5.028 min
 Delta R.T.: 0.016 min
 Response: 160111
 Conc: 2.40 ng/ml



#18 AR-1242-3

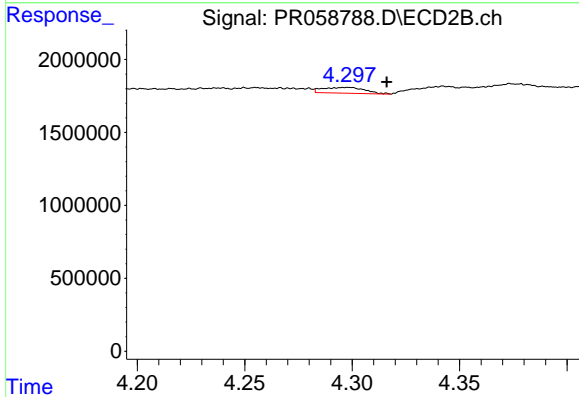
R.T.: 4.230 min
 Delta R.T.: 0.006 min
 Response: 186988
 Conc: 2.60 ng/ml



#19 AR-1242-4

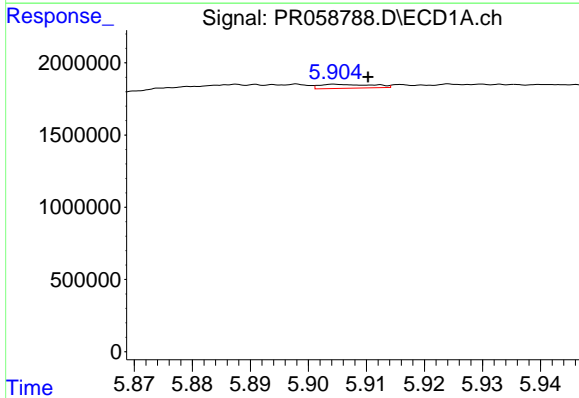
R.T.: 5.145 min
 Delta R.T.: 0.030 min
 Response: 106478
 Conc: 1.98 ng/ml

Instrument :
 ECD_R
 ClientSampleId :



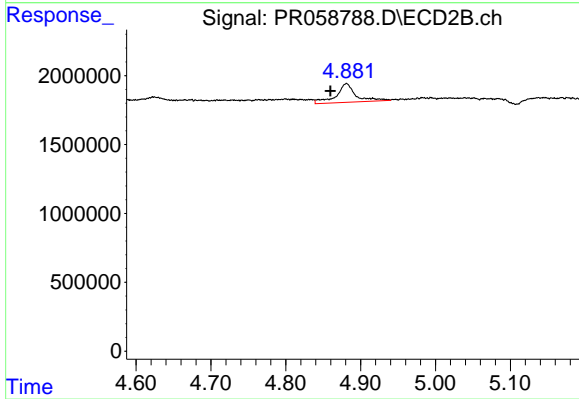
#19 AR-1242-4

R.T.: 4.298 min
 Delta R.T.: -0.018 min
 Response: 539031
 Conc: 7.92 ng/ml



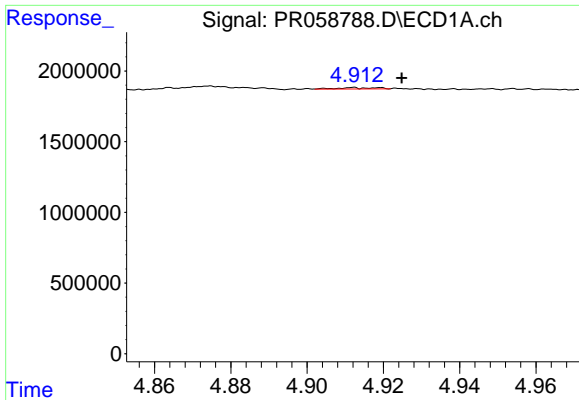
#20 AR-1242-5

R.T.: 5.905 min
 Delta R.T.: -0.005 min
 Response: 176358
 Conc: 3.35 ng/ml



#20 AR-1242-5

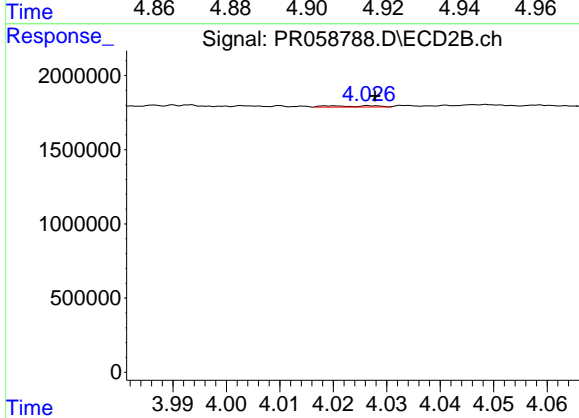
R.T.: 4.881 min
 Delta R.T.: 0.021 min
 Response: 2485192
 Conc: 27.83 ng/ml



#21 AR-1248-1

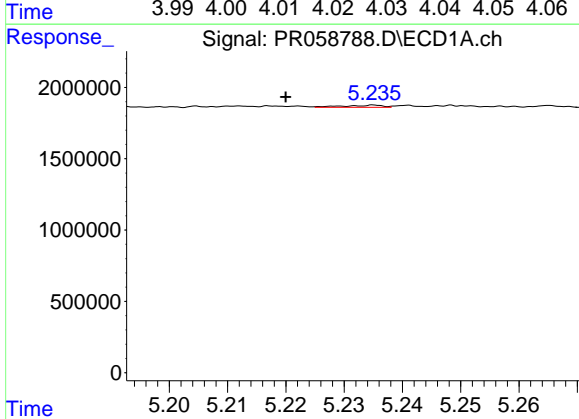
R.T.: 4.912 min
 Delta R.T.: -0.013 min
 Response: 69543
 Conc: 1.19 ng/ml

Instrument :
 ECD_R
 ClientSampleId :



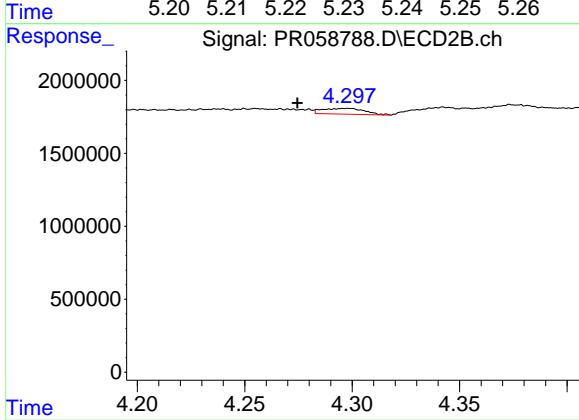
#21 AR-1248-1

R.T.: 4.020 min
 Delta R.T.: -0.008 min
 Response: 54568
 Conc: 0.73 ng/ml



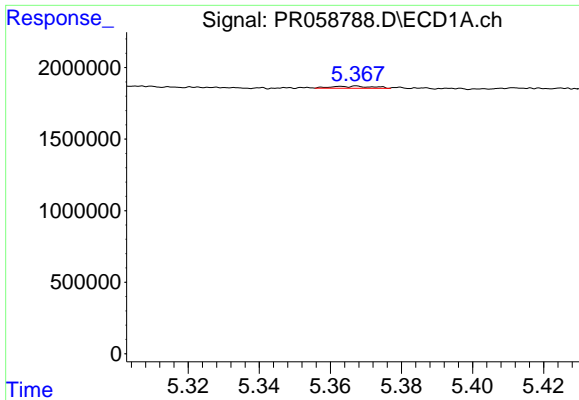
#22 AR-1248-2

R.T.: 5.235 min
 Delta R.T.: 0.015 min
 Response: 71875
 Conc: 0.99 ng/ml



#22 AR-1248-2

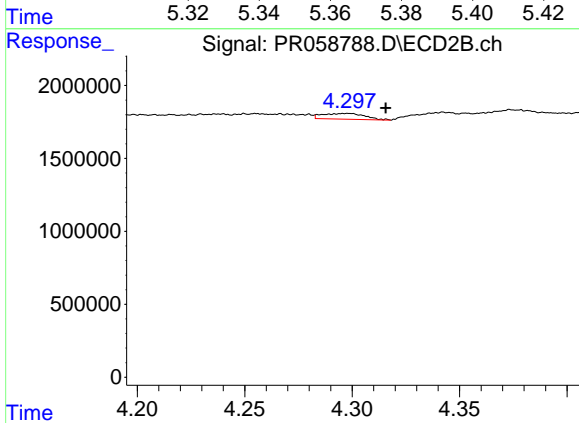
R.T.: 4.298 min
 Delta R.T.: 0.023 min
 Response: 539031
 Conc: 5.40 ng/ml



#23 AR-1248-3

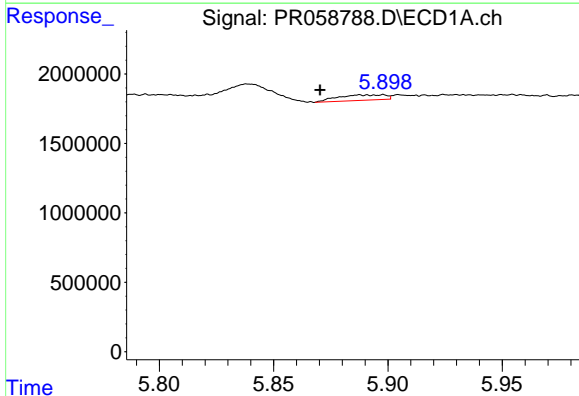
R.T.: 5.368 min
 Delta R.T.: -0.067 min
 Response: 115719
 Conc: 1.37 ng/ml

Instrument :
 ECD_R
 ClientSampleId :



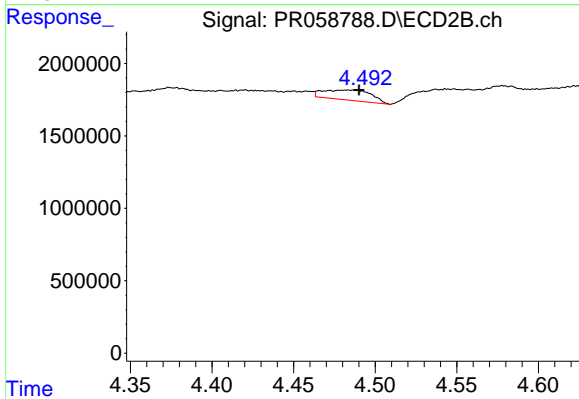
#23 AR-1248-3

R.T.: 4.298 min
 Delta R.T.: -0.018 min
 Response: 539031
 Conc: 5.30 ng/ml



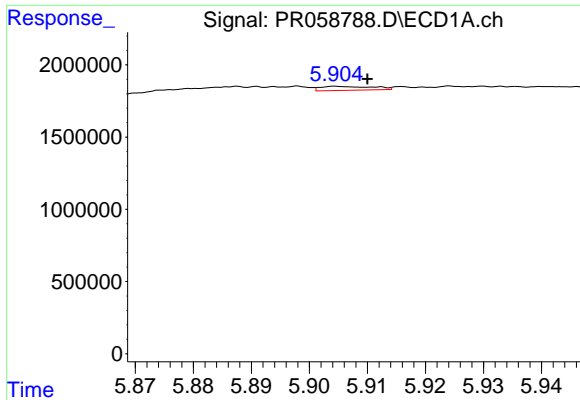
#24 AR-1248-4

R.T.: 5.898 min
 Delta R.T.: 0.028 min
 Response: 557432
 Conc: 6.13 ng/ml



#24 AR-1248-4

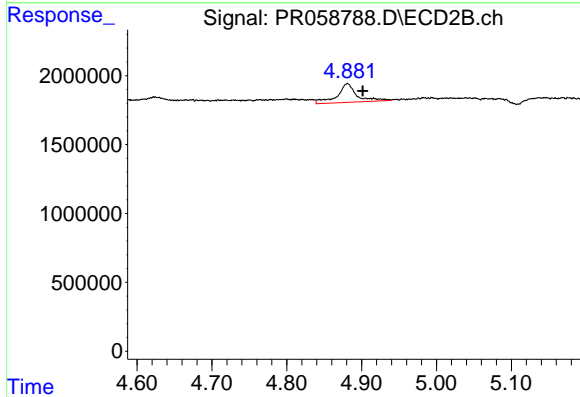
R.T.: 4.484 min
 Delta R.T.: -0.007 min
 Response: 1411192
 Conc: 11.26 ng/ml



#25 AR-1248-5

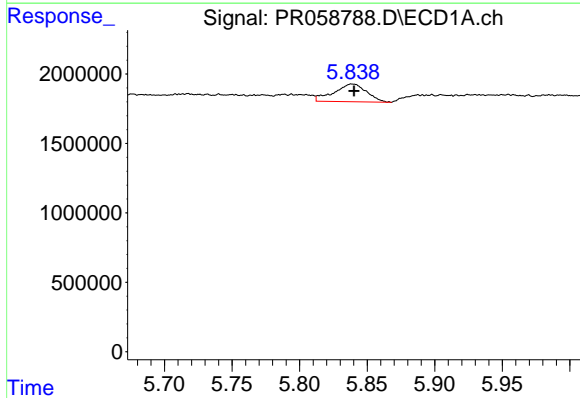
R.T.: 5.905 min
 Delta R.T.: -0.005 min
 Response: 176358
 Conc: 2.00 ng/ml

Instrument :
 ECD_R
 ClientSampleId :



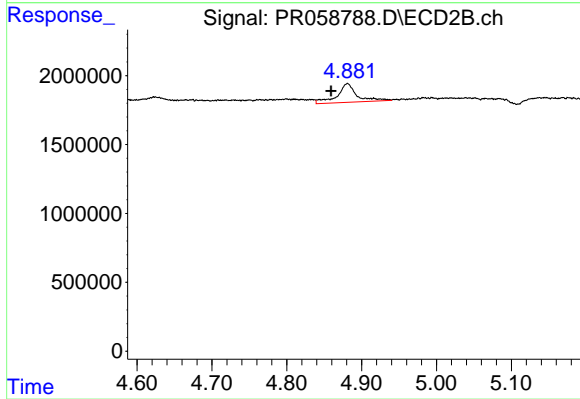
#25 AR-1248-5

R.T.: 4.881 min
 Delta R.T.: -0.020 min
 Response: 2485192
 Conc: 19.74 ng/ml



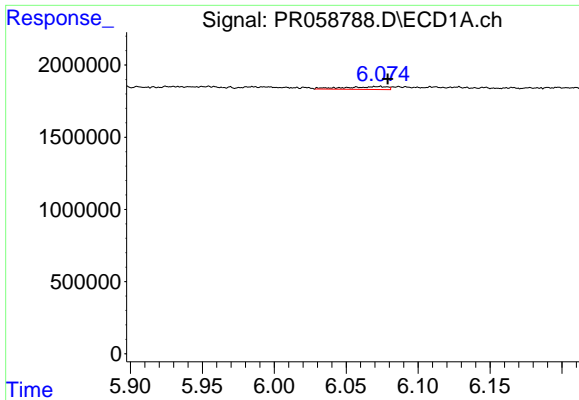
#26 AR-1254-1

R.T.: 5.839 min
 Delta R.T.: -0.002 min
 Response: 2161591
 Conc: 25.07 ng/ml



#26 AR-1254-1

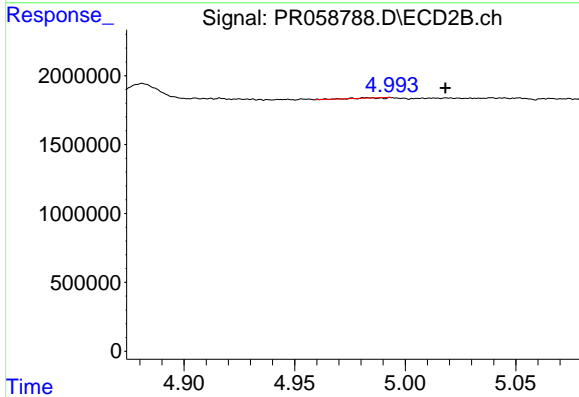
R.T.: 4.881 min
 Delta R.T.: 0.022 min
 Response: 2485192
 Conc: 13.82 ng/ml



#27 AR-1254-2

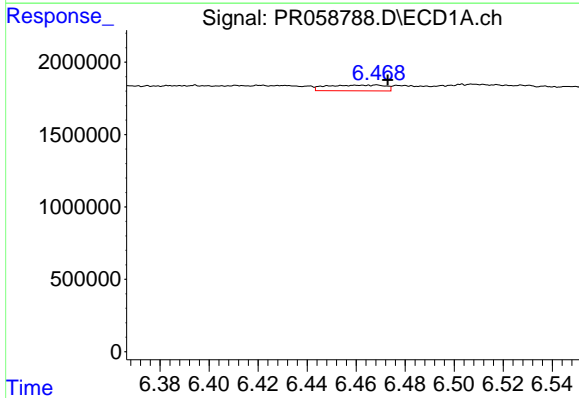
R.T.: 6.074 min
 Delta R.T.: -0.005 min
 Response: 411571
 Conc: 3.17 ng/ml

Instrument :
 ECD_R
 ClientSampleId :



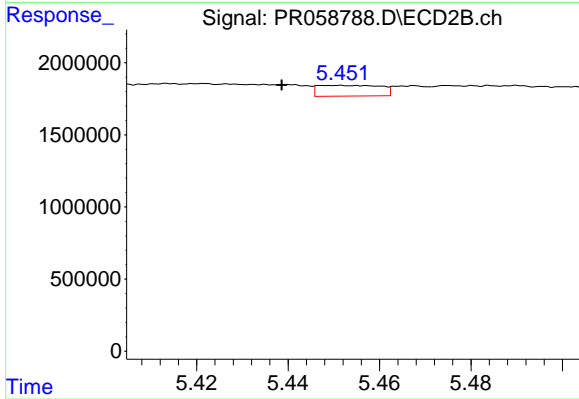
#27 AR-1254-2

R.T.: 4.983 min
 Delta R.T.: -0.035 min
 Response: 7167
 Conc: 0.05 ng/ml



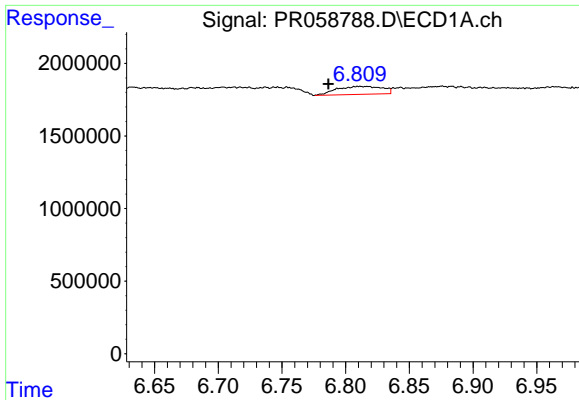
#28 AR-1254-3

R.T.: 6.468 min
 Delta R.T.: -0.005 min
 Response: 654369
 Conc: 4.80 ng/ml



#28 AR-1254-3

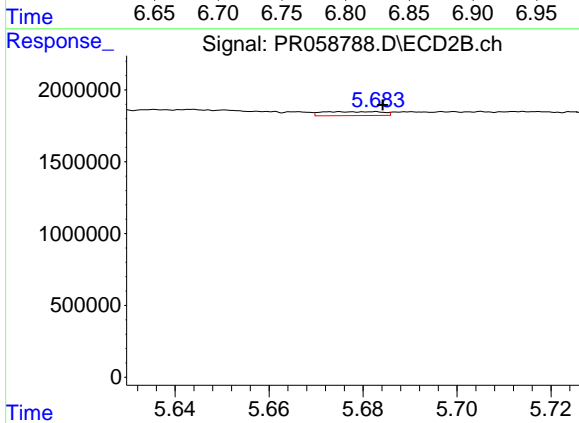
R.T.: 5.451 min
 Delta R.T.: 0.012 min
 Response: 706154
 Conc: 2.78 ng/ml



#29 AR-1254-4

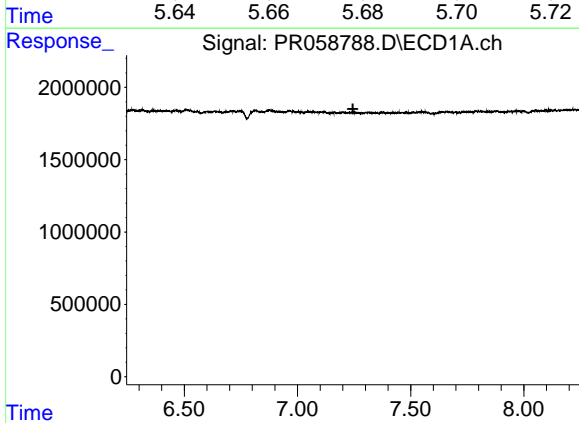
R.T.: 6.817 min
 Delta R.T.: 0.030 min
 Response: 1384721
 Conc: 13.51 ng/ml

Instrument :
 ECD_R
 ClientSampleId :



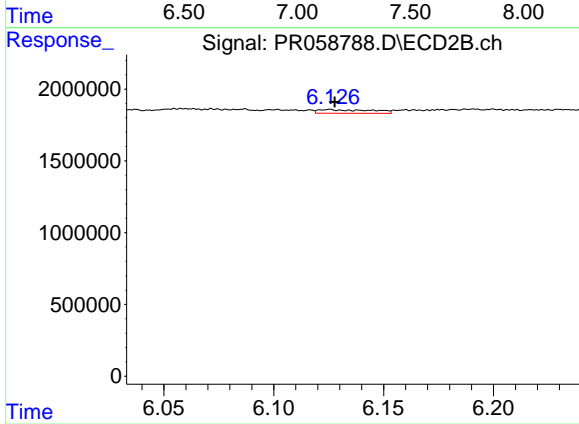
#29 AR-1254-4

R.T.: 5.675 min
 Delta R.T.: -0.010 min
 Response: 243307
 Conc: 1.53 ng/ml



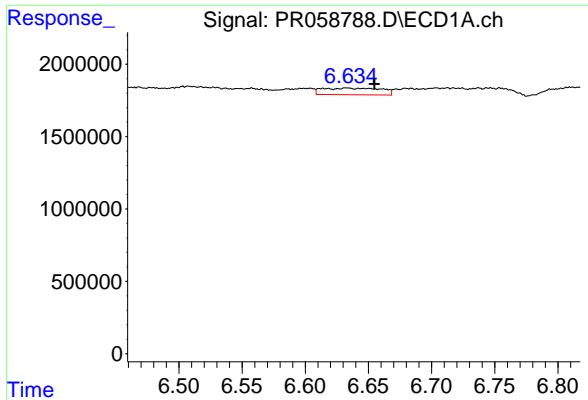
#30 AR-1254-5

R.T.: 0.000 min
 Exp R.T. : 7.245 min
 Response: 0
 Conc: N.D.



#30 AR-1254-5

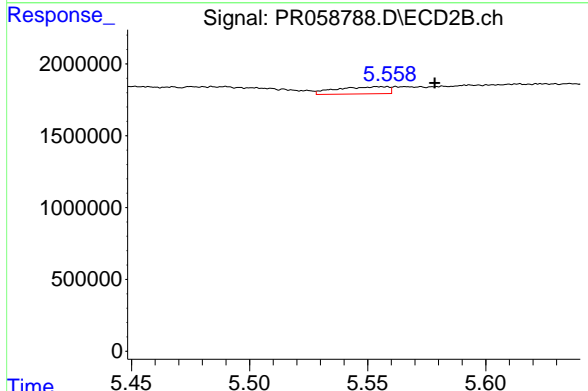
R.T.: 6.125 min
 Delta R.T.: -0.002 min
 Response: 430052
 Conc: 1.89 ng/ml



#31 AR-1260-1

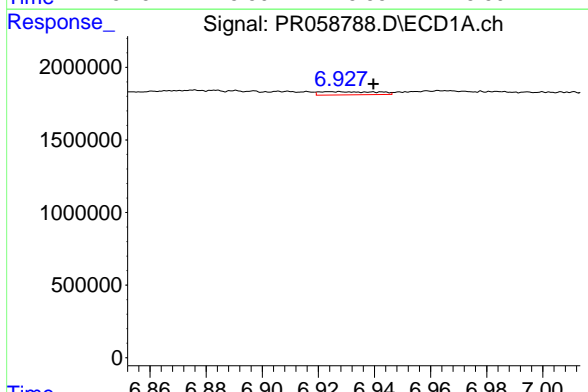
R.T.: 6.633 min
 Delta R.T.: -0.022 min
 Response: 1483649
 Conc: 14.25 ng/ml

Instrument :
 ECD_R
 ClientSampleId :



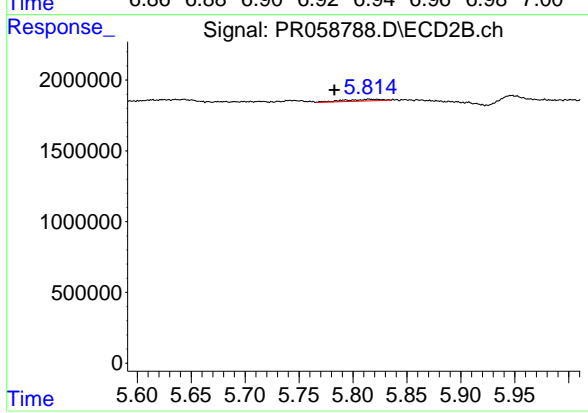
#31 AR-1260-1

R.T.: 5.556 min
 Delta R.T.: -0.023 min
 Response: 763250
 Conc: 4.43 ng/ml



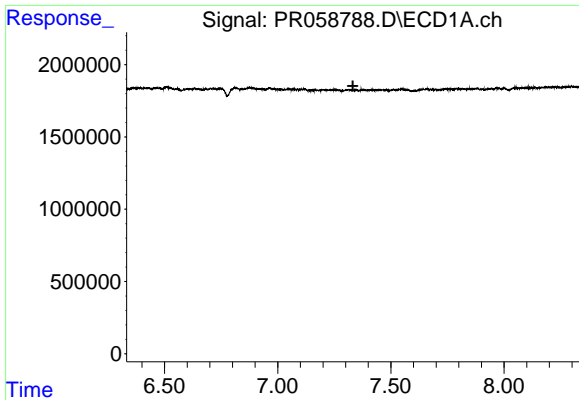
#32 AR-1260-2

R.T.: 6.925 min
 Delta R.T.: -0.015 min
 Response: 311604
 Conc: 2.52 ng/ml



#32 AR-1260-2

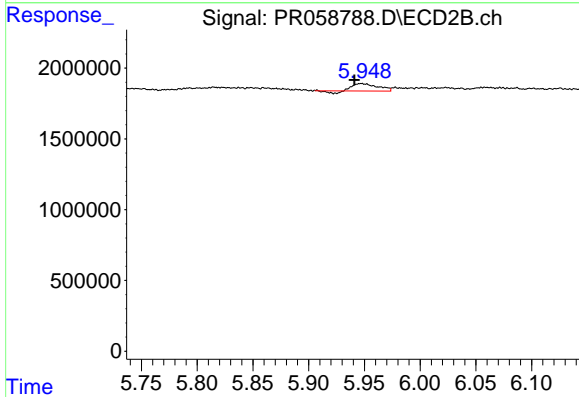
R.T.: 5.815 min
 Delta R.T.: 0.032 min
 Response: 286146
 Conc: 1.36 ng/ml



#33 AR-1260-3

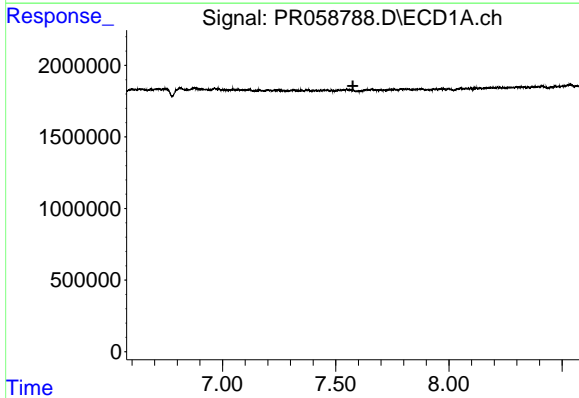
R.T.: 0.000 min
 Exp R.T.: 7.332 min
 Response: 0
 Conc: N.D.

Instrument :
 ECD_R
 ClientSampleId :



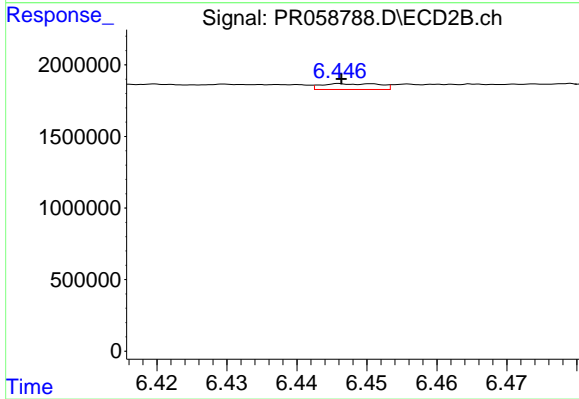
#33 AR-1260-3

R.T.: 5.947 min
 Delta R.T.: 0.006 min
 Response: 738235
 Conc: 3.71 ng/ml



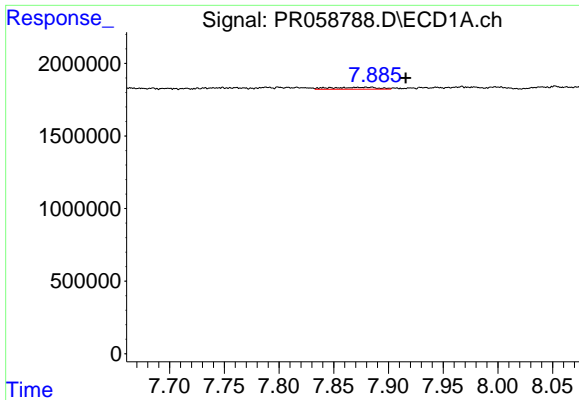
#34 AR-1260-4

R.T.: 0.000 min
 Exp R.T.: 7.576 min
 Response: 0
 Conc: N.D.



#34 AR-1260-4

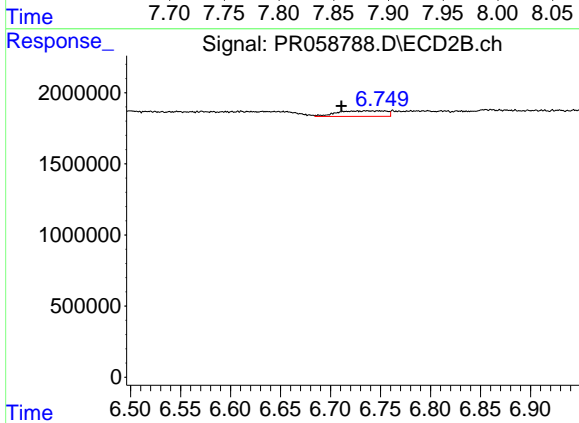
R.T.: 6.447 min
 Delta R.T.: 0.000 min
 Response: 231956
 Conc: 1.40 ng/ml



#35 AR-1260-5

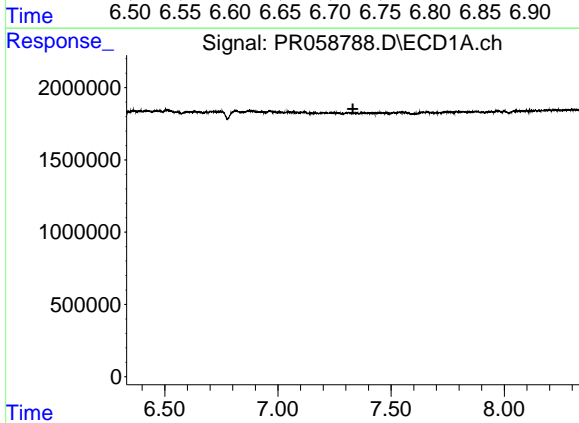
R.T.: 7.885 min
 Delta R.T.: -0.031 min
 Response: 424568
 Conc: 2.04 ng/ml

Instrument :
 ECD_R
 ClientSampleId :



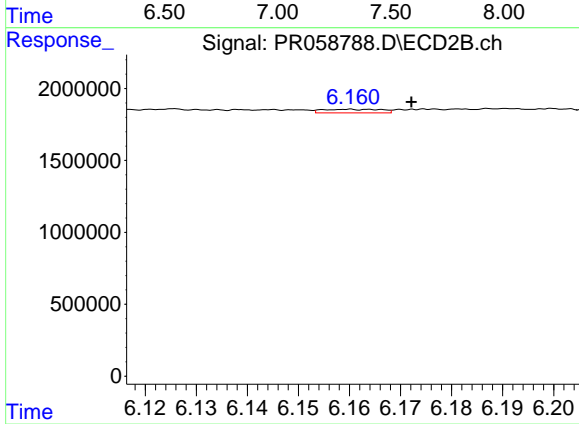
#35 AR-1260-5

R.T.: 6.727 min
 Delta R.T.: 0.016 min
 Response: 1341022
 Conc: 3.40 ng/ml



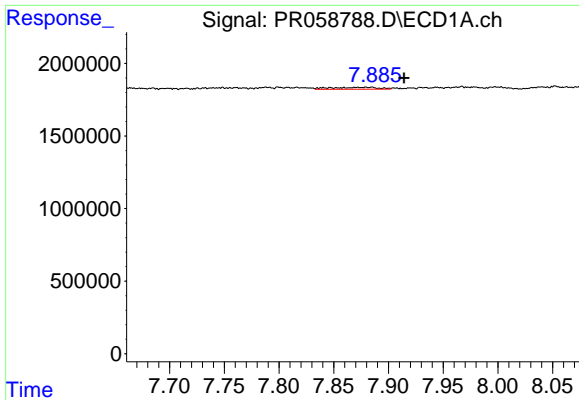
#36 AR-1262-1

R.T.: 0.000 min
 Exp R.T. : 7.331 min
 Response: 0
 Conc: N.D.



#36 AR-1262-1

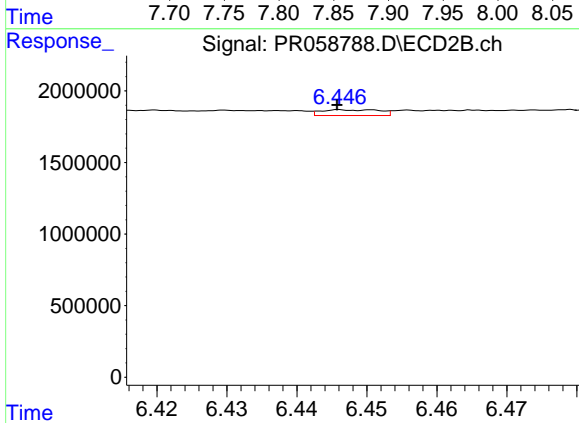
R.T.: 6.160 min
 Delta R.T.: -0.012 min
 Response: 198317
 Conc: 0.82 ng/ml



#37 AR-1262-2

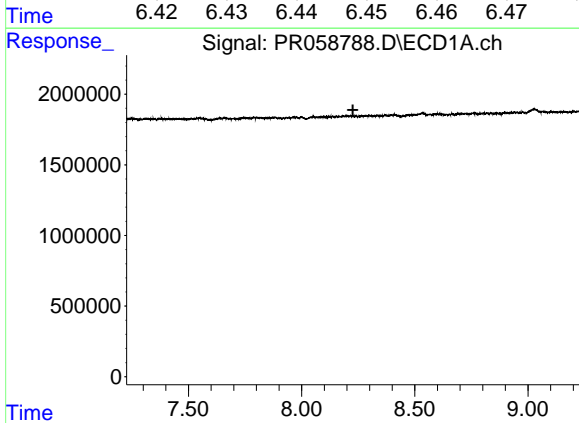
R.T.: 7.885 min
 Delta R.T.: -0.029 min
 Response: 424568
 Conc: 1.76 ng/ml

Instrument :
 ECD_R
 ClientSampleId :



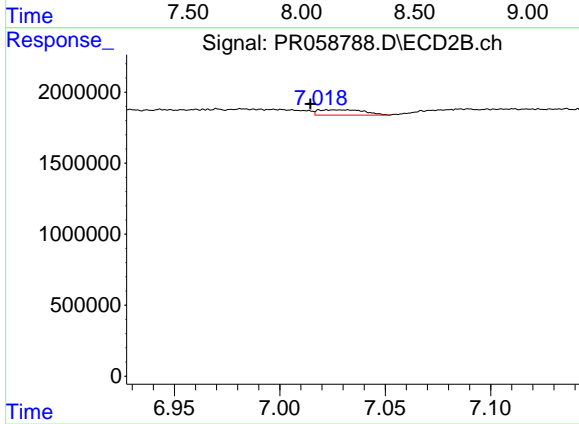
#37 AR-1262-2

R.T.: 6.447 min
 Delta R.T.: 0.001 min
 Response: 231956
 Conc: 1.06 ng/ml



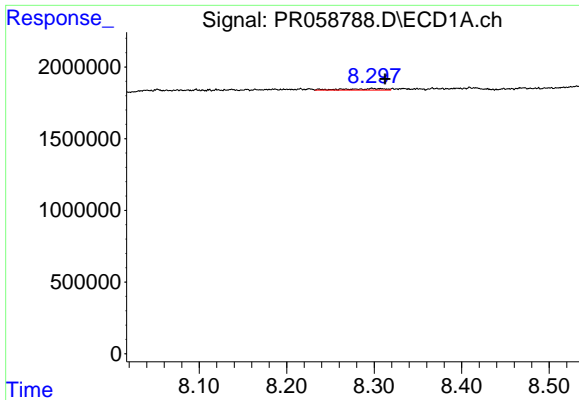
#38 AR-1262-3

R.T.: 0.000 min
 Exp R.T. : 8.226 min
 Response: 0
 Conc: N.D.



#38 AR-1262-3

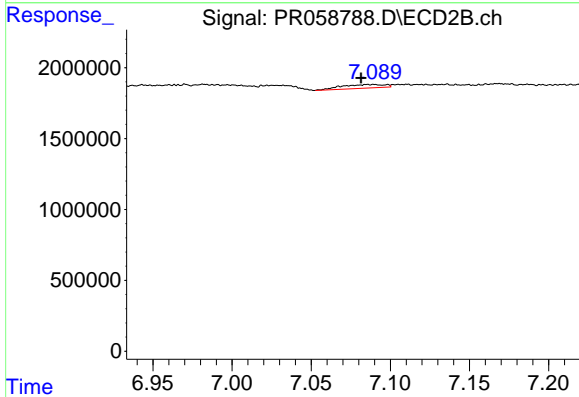
R.T.: 7.027 min
 Delta R.T.: 0.012 min
 Response: 567479
 Conc: 3.33 ng/ml



#39 AR-1262-4

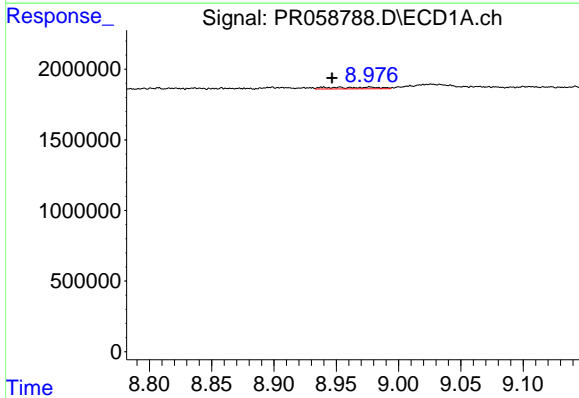
R.T.: 8.298 min
 Delta R.T.: -0.015 min
 Response: 300178
 Conc: 3.72 ng/ml

Instrument :
 ECD_R
 ClientSampleId :



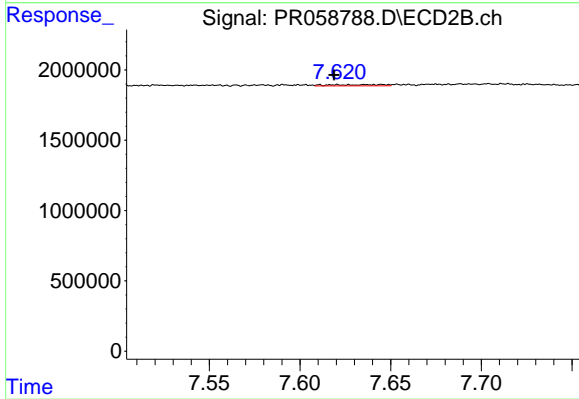
#39 AR-1262-4

R.T.: 7.089 min
 Delta R.T.: 0.008 min
 Response: 495288
 Conc: 1.52 ng/ml



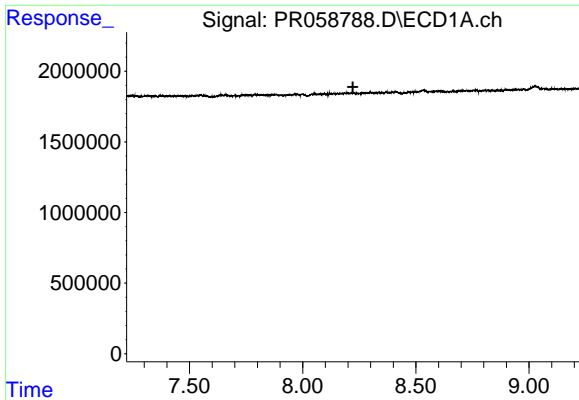
#40 AR-1262-5

R.T.: 8.940 min
 Delta R.T.: -0.007 min
 Response: 343505
 Conc: 3.65 ng/ml



#40 AR-1262-5

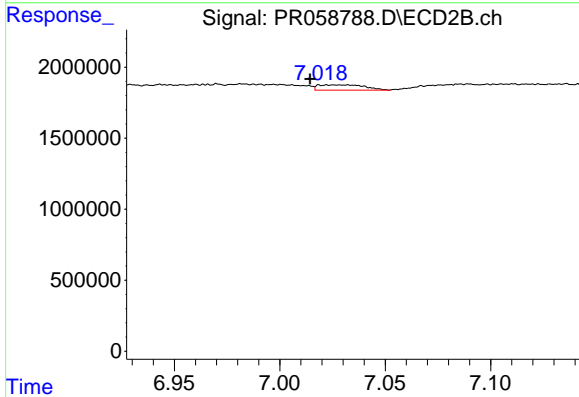
R.T.: 7.620 min
 Delta R.T.: 0.002 min
 Response: 170947
 Conc: 1.15 ng/ml



#41 AR-1268-1

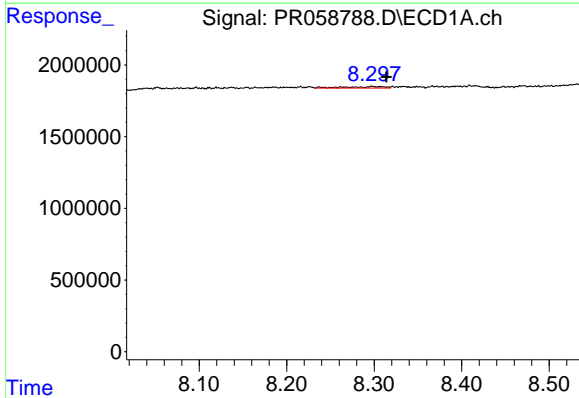
R.T.: 0.000 min
 Exp R.T.: 8.222 min
 Response: 0
 Conc: N.D.

Instrument :
 ECD_R
 ClientSampleId :



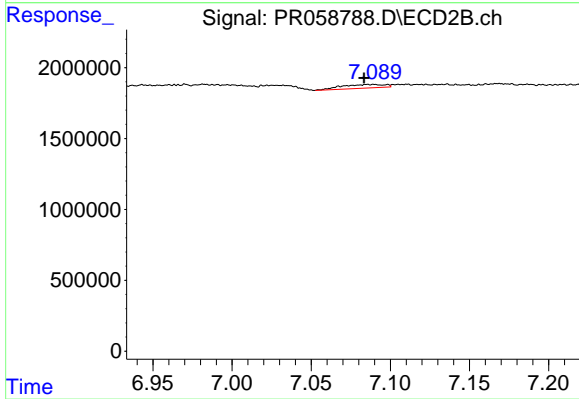
#41 AR-1268-1

R.T.: 7.027 min
 Delta R.T.: 0.013 min
 Response: 567479
 Conc: 1.13 ng/ml



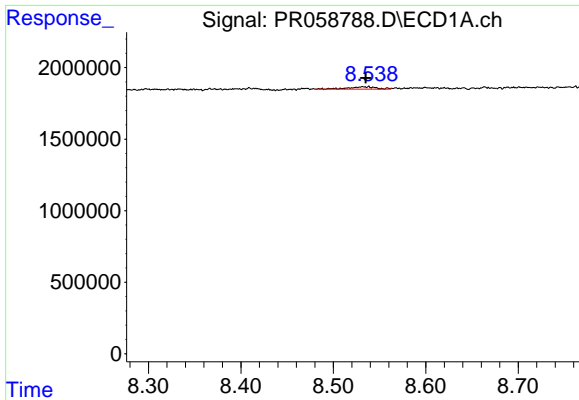
#42 AR-1268-2

R.T.: 8.298 min
 Delta R.T.: -0.016 min
 Response: 300178
 Conc: 1.18 ng/ml



#42 AR-1268-2

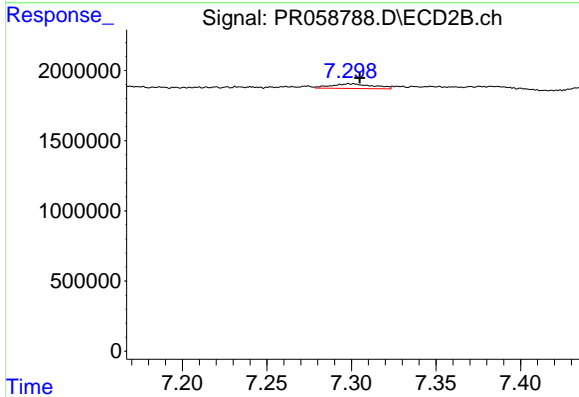
R.T.: 7.089 min
 Delta R.T.: 0.006 min
 Response: 495288
 Conc: 1.09 ng/ml



#43 AR-1268-3

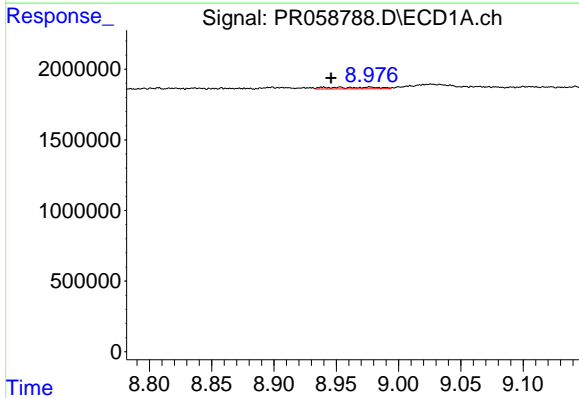
R.T.: 8.538 min
 Delta R.T.: 0.003 min
 Response: 357690
 Conc: 1.63 ng/ml

Instrument :
 ECD_R
 ClientSampleId :



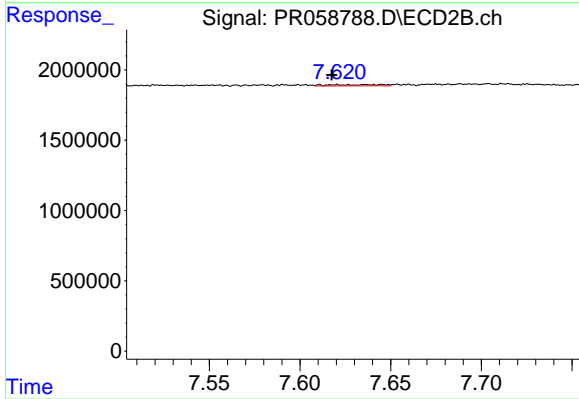
#43 AR-1268-3

R.T.: 7.299 min
 Delta R.T.: -0.006 min
 Response: 579210
 Conc: 1.51 ng/ml



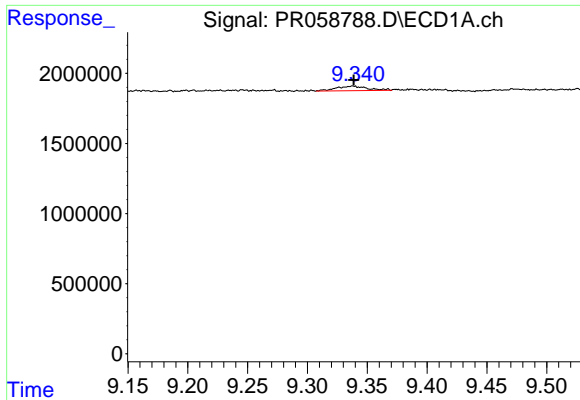
#44 AR-1268-4

R.T.: 8.940 min
 Delta R.T.: -0.006 min
 Response: 343505
 Conc: 3.41 ng/ml



#44 AR-1268-4

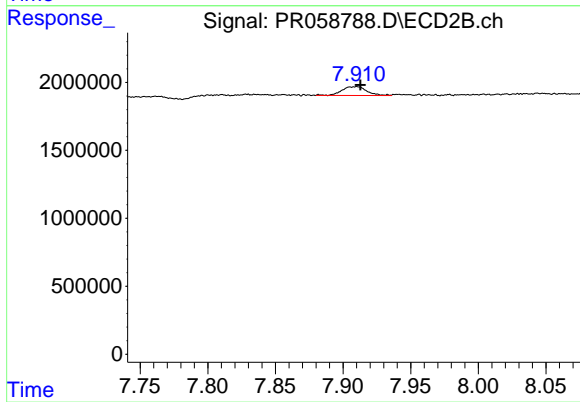
R.T.: 7.620 min
 Delta R.T.: 0.003 min
 Response: 170947
 Conc: 1.07 ng/ml



#45 AR-1268-5

R.T.: 9.338 min
Delta R.T.: 0.000 min
Response: 584789
Conc: 0.83 ng/ml

Instrument :
ECD_R
ClientSampleId :



#45 AR-1268-5

R.T.: 7.910 min
Delta R.T.: -0.003 min
Response: 833869
Conc: 0.69 ng/ml