

Data Path : Z:\pestpcbsrv\HPCHEM1\ECD_R\Data\PR011824\
 Data File : PR064963.D
 Signal(s) : Signal #1: ECD1A.ch Signal #2: ECD2B.ch
 Acq On : 18 Jan 2024 10:07
 Operator : AJ\MA
 Sample : P1129-09
 Misc :
 ALS Vial : 5 Sample Multiplier: 1

Integration File signal 1: autoint1.e
 Integration File signal 2: autoint2.e
 Quant Time: Jan 18 11:52:51 2024
 Quant Method : Z:\pestpcbsrv\HPCHEM1\ECD_R\Method\PR011224CLP.M
 Quant Title : GC EXTRACTABLES
 QLast Update : Sat Jan 13 05:16:14 2024
 Response via : Initial Calibration
 Integrator: ChemStation

Volume Inj. : 1 µl
 Signal #1 Phase : ZB MR1 Signal #2 Phase: ZB MR2
 Signal #1 Info : 30Mx0.32mmx 0.5µm Signal #2 Info : 30M x 0.32mm x 0.25µm

Compound	RT#1	RT#2	Resp#1	Resp#2	ng/ml	ng/ml
System Monitoring Compounds						
1) SA Tetrachlo...	3.690	3.018	3752197	169635	0.577	0.029 #
2) SA Decachlor...	9.741	8.380	1675882	2467462	0.690	0.879 #
Target Compounds						
3) L1 AR-1016-1	4.945	4.154	70947102	73713555	370.901	379.232
4) L1 AR-1016-2	4.968	4.172	106.2E6	103.4E6	376.896	385.377
5) L1 AR-1016-3	5.033	4.355	72420805	53851198	401.945	369.608
6) L1 AR-1016-4	5.136	4.407	54548171	40462801	375.856	356.751
7) L1 AR-1016-5	5.457	4.630	47814704	52472865	324.361	350.623
8) L2 AR-1221-1	3.926	3.237	7012369	5953577	94.656	92.194
9) L2 AR-1221-2	4.020	3.328	6655386	6258351	131.937	138.516
10) L2 AR-1221-3	4.100	3.406	34538925	31128649	212.071	206.187
11) L3 AR-1232-1	4.100	3.406	34538925	31128649	264.691	260.154
12) L3 AR-1232-2	4.656	4.172	59256374	103.4E6	823.063	878.695
13) L3 AR-1232-3	4.968	4.355	106.2E6	53851198	841.143	863.226
14) L3 AR-1232-4	5.136	4.450	54548171	50060239	839.912	914.175
15) L3 AR-1232-5	5.242	4.630	40858883	52472865	858.794	880.531
16) L4 AR-1242-1	4.945	4.154	70947102	73713555	464.863	473.393
17) L4 AR-1242-2	4.968	4.172	106.2E6	103.4E6	474.086	487.569
18) L4 AR-1242-3	5.033	4.355	72420805	53851198	507.754	465.327
19) L4 AR-1242-4	5.136	4.450	54548171	50060239	479.328	446.942
20) L4 AR-1242-5	5.938	5.008	6106184	44545365	50.136	311.915 #
21) L5 AR-1248-1	4.945	4.154	70947102	73713555	605.761	625.294
22) L5 AR-1248-2	5.242	4.407	40858883	40462801	242.491	246.732
23) L5 AR-1248-3	5.457	4.450	47814704	50060239	241.717	296.302
24) L5 AR-1248-4	5.895	4.630	5282234	52472865	25.219	257.368 #
25) L5 AR-1248-5	5.938	5.052	6106184	7327906	29.100	36.482 #
26) L6 AR-1254-1	5.866	5.008	32955714	44545365	150.649	144.015
27) L6 AR-1254-2	6.108	5.171	42510846	44324516	129.226	165.692 #
28) L6 AR-1254-3	6.503	5.621	20940788	79360347	62.621	184.122 #
29) L6 AR-1254-4	6.818	5.852	11592322	9070769	50.658	33.746 #
30) L6 AR-1254-5	7.280	6.304	129.8E6	165.3E6	498.532	429.984
31) L7 AR-1260-1	6.687	5.744	91090828	116.1E6	336.428	378.881
32) L7 AR-1260-2	6.974	5.952	106.5E6	139.4E6	345.807	379.737
33) L7 AR-1260-3	7.369	6.114	67979805	131.1E6	296.001	379.188 #
34) L7 AR-1260-4	7.614	6.628	82495221	94545664	325.106	330.749
35) L7 AR-1260-5	7.958	6.897	153.2E6	234.0E6	324.836	350.179
36) L8 AR-1262-1	7.369	6.349	67979805	99336666	216.876	251.594
37) L8 AR-1262-2	7.958	6.897	153.2E6	234.0E6	297.890	327.519
38) L8 AR-1262-3	8.280	7.206	97784552	40218318	282.173	147.573 #
39) L8 AR-1262-4	8.361	7.274	22299866	167.1E6	84.629	320.187 #
40) L8 AR-1262-5	9.013	7.820	37006381	48462313	203.119	204.807
41) L9 AR-1268-1	8.280	7.206	97784552	40218318	155.395	48.394 #

Data Path : Z:\pestpcbsrv\HPCHEM1\ECD_R\Data\PR011824\
 Data File : PR064963.D
 Signal(s) : Signal #1: ECD1A.ch Signal #2: ECD2B.ch
 Acq On : 18 Jan 2024 10:07
 Operator : AJ\MA
 Sample : P1129-09
 Misc :
 ALS Vial : 5 Sample Multiplier: 1

Integration File signal 1: autoint1.e
 Integration File signal 2: autoint2.e
 Quant Time: Jan 18 11:52:51 2024
 Quant Method : Z:\pestpcbsrv\HPCHEM1\ECD_R\Method\PR011224CLP.M
 Quant Title : GC EXTRACTABLES
 QLast Update : Sat Jan 13 05:16:14 2024
 Response via : Initial Calibration
 Integrator: ChemStation

Volume Inj. : 1 µl
 Signal #1 Phase : ZB MR1 Signal #2 Phase: ZB MR2
 Signal #1 Info : 30Mx0.32mmx 0.5µm Signal #2 Info : 30M x 0.32mm x 0.25µm

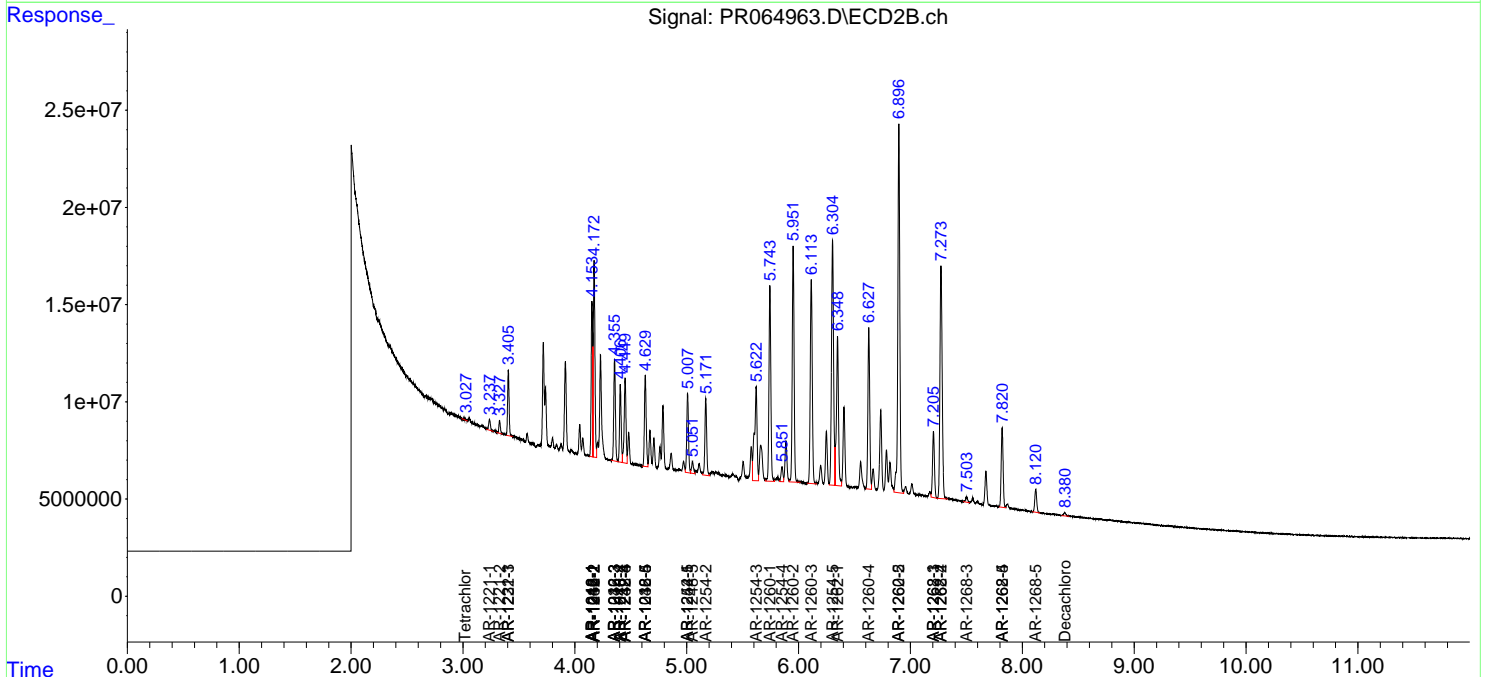
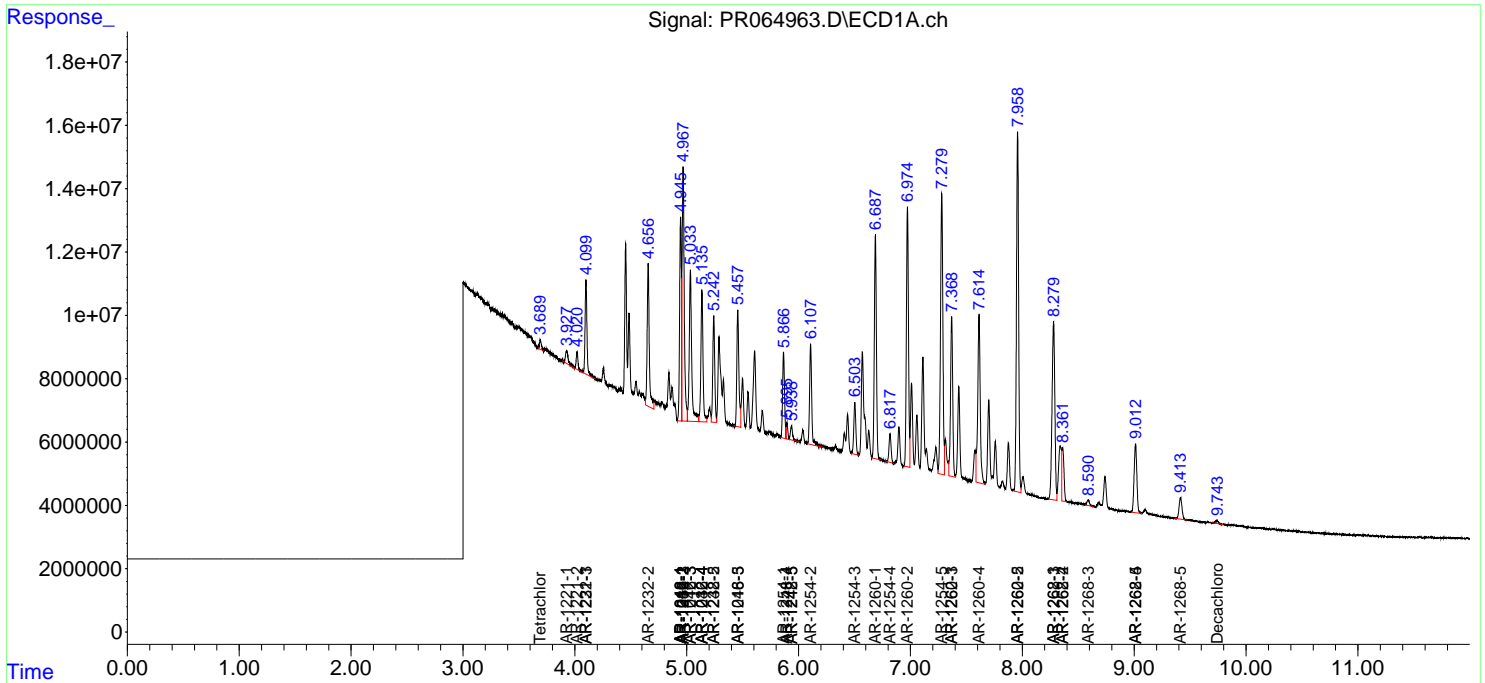
	Compound	RT#1	RT#2	Resp#1	Resp#2	ng/ml	ng/ml
42)	L9 AR-1268-2	8.361	7.274	22299866	167.1E6	39.487	214.728 #
43)	L9 AR-1268-3	8.590	7.502	2887034	3647316	5.822	5.512
44)	L9 AR-1268-4	9.013	7.820	37006381	48462313	174.460	175.090
45)	L9 AR-1268-5	9.415	8.121	12420114	14401391	8.195	7.209

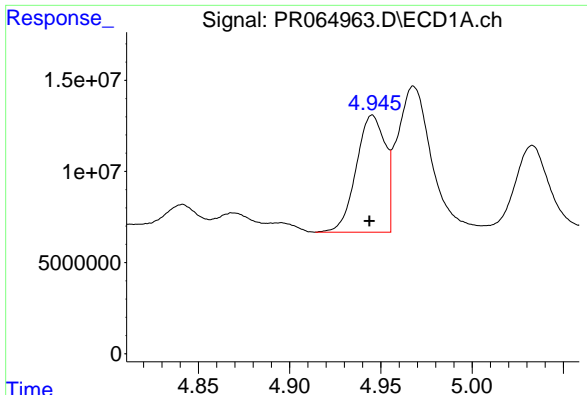
(f)=RT Delta > 1/2 Window (#)=Amounts differ by > 25% (m)=manual int.

Data Path : Z:\pestpcbsrv\HPCHEM1\ECD_R\Data\PR011824\
 Data File : PR064963.D
 Signal(s) : Signal #1: ECD1A.ch Signal #2: ECD2B.ch
 Acq On : 18 Jan 2024 10:07
 Operator : AJ\MA
 Sample : P1129-09
 Misc :
 ALS Vial : 5 Sample Multiplier: 1

Integration File signal 1: autoint1.e
 Integration File signal 2: autoint2.e
 Quant Time: Jan 18 11:52:51 2024
 Quant Method : Z:\pestpcbsrv\HPCHEM1\ECD_R\Method\PR011224CLP.M
 Quant Title : GC EXTRACTABLES
 QLast Update : Sat Jan 13 05:16:14 2024
 Response via : Initial Calibration
 Integrator: ChemStation

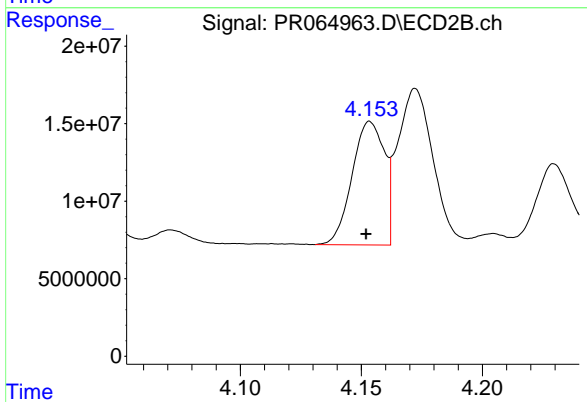
Volume Inj. : 1 µl
 Signal #1 Phase : ZB MR1 Signal #2 Phase: ZB MR2
 Signal #1 Info : 30Mx0.32mmx 0.5µm Signal #2 Info : 30M x 0.32mm x 0.25µm





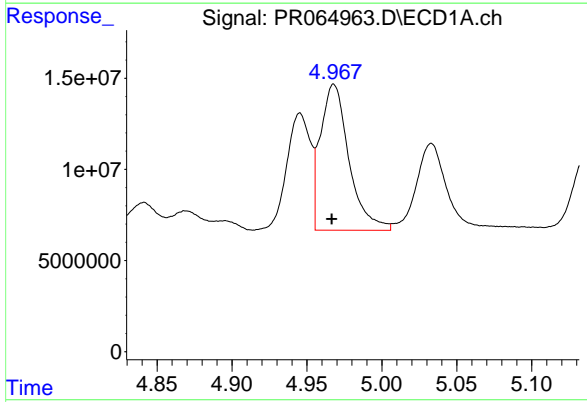
#3 AR-1016-1

R.T.: 4.945 min
Delta R.T.: 0.002 min
Response: 70947102
Conc: 370.90 ng/ml



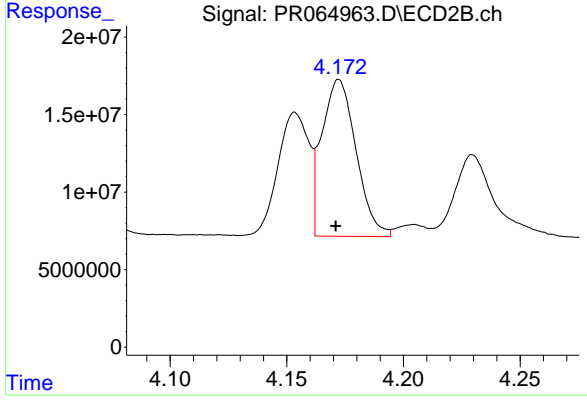
#3 AR-1016-1

R.T.: 4.154 min
Delta R.T.: 0.002 min
Response: 73713555
Conc: 379.23 ng/ml



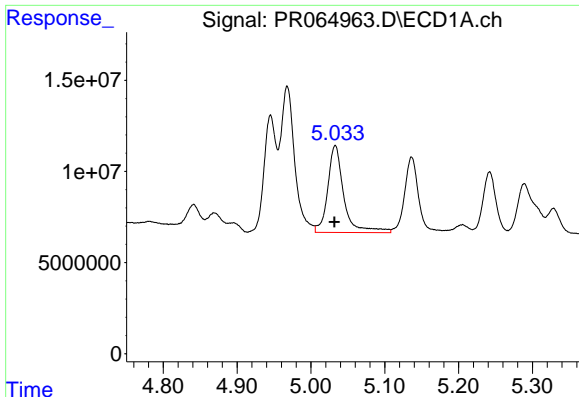
#4 AR-1016-2

R.T.: 4.968 min
Delta R.T.: 0.002 min
Response: 106232818
Conc: 376.90 ng/ml



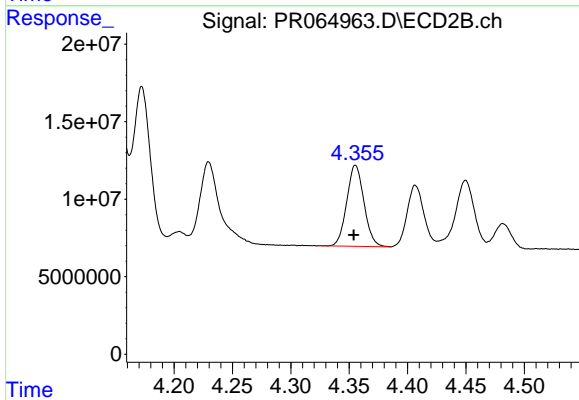
#4 AR-1016-2

R.T.: 4.172 min
Delta R.T.: 0.001 min
Response: 103419266
Conc: 385.38 ng/ml



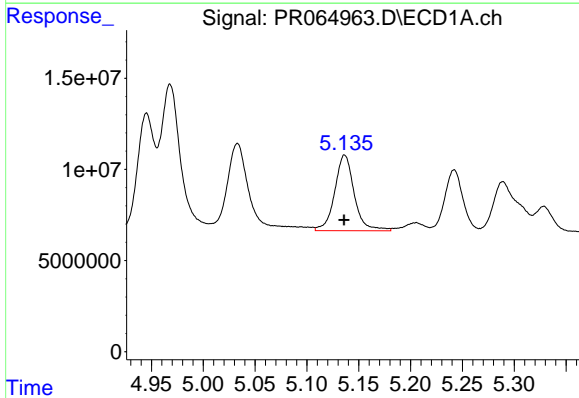
#5 AR-1016-3

R.T.: 5.033 min
Delta R.T.: 0.001 min
Response: 72420805
Conc: 401.94 ng/ml



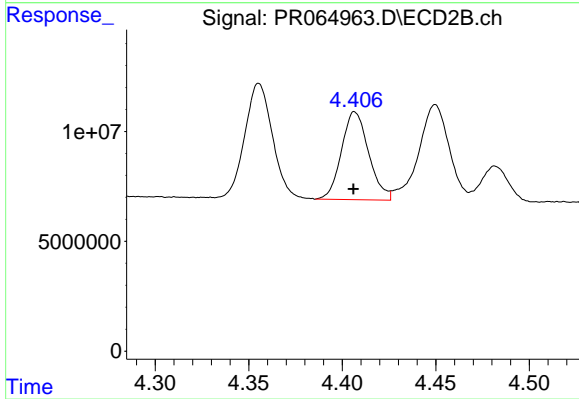
#5 AR-1016-3

R.T.: 4.355 min
Delta R.T.: 0.001 min
Response: 53851198
Conc: 369.61 ng/ml



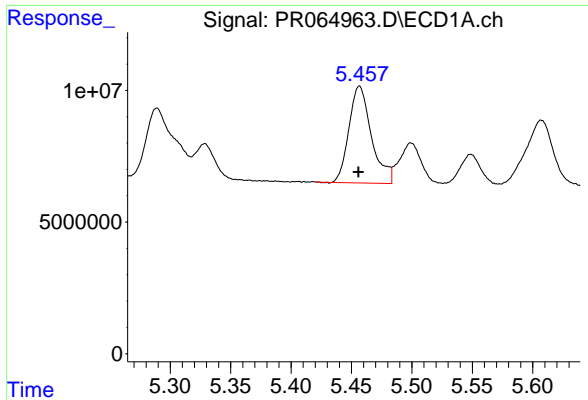
#6 AR-1016-4

R.T.: 5.136 min
Delta R.T.: 0.000 min
Response: 54548171
Conc: 375.86 ng/ml



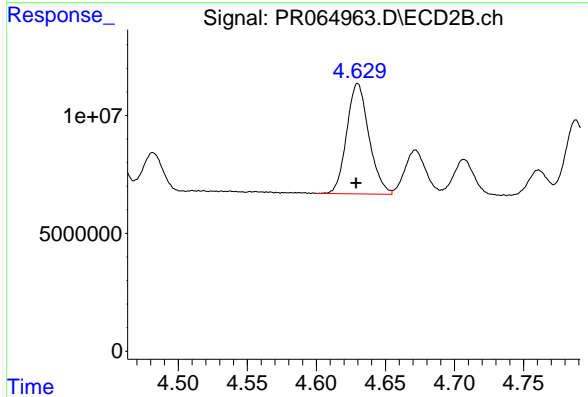
#6 AR-1016-4

R.T.: 4.407 min
Delta R.T.: 0.000 min
Response: 40462801
Conc: 356.75 ng/ml



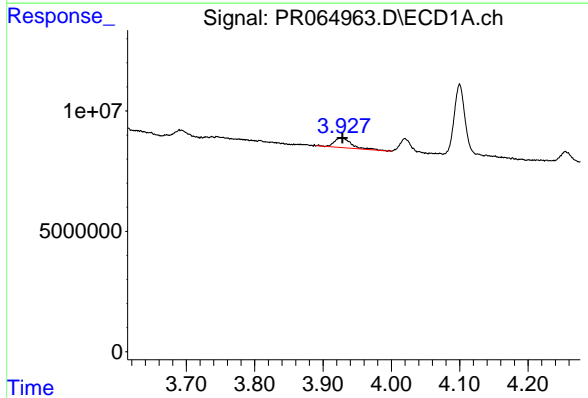
#7 AR-1016-5

R.T.: 5.457 min
Delta R.T.: 0.000 min
Response: 47814704
Conc: 324.36 ng/ml



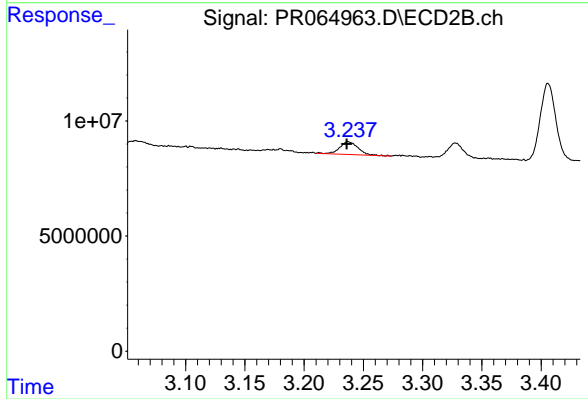
#7 AR-1016-5

R.T.: 4.630 min
Delta R.T.: 0.001 min
Response: 52472865
Conc: 350.62 ng/ml



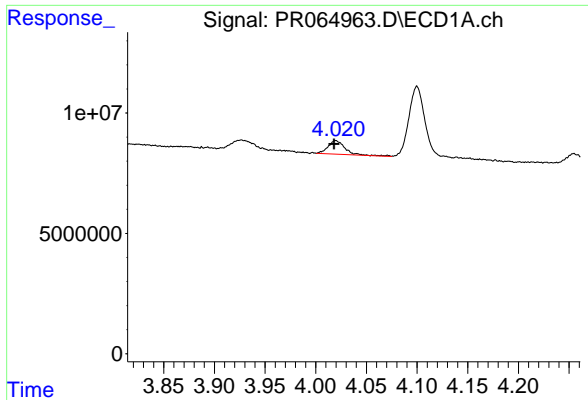
#8 AR-1221-1

R.T.: 3.926 min
Delta R.T.: -0.002 min
Response: 7012369
Conc: 94.66 ng/ml



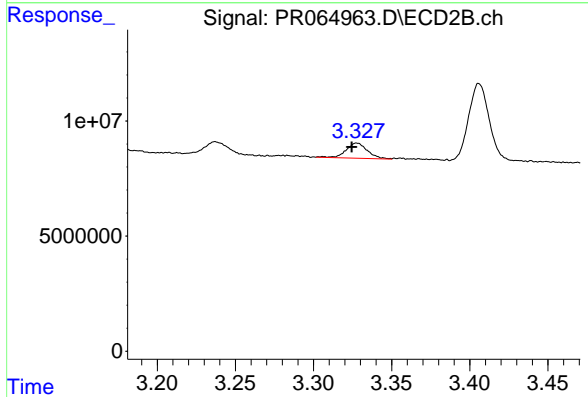
#8 AR-1221-1

R.T.: 3.237 min
Delta R.T.: 0.001 min
Response: 5953577
Conc: 92.19 ng/ml



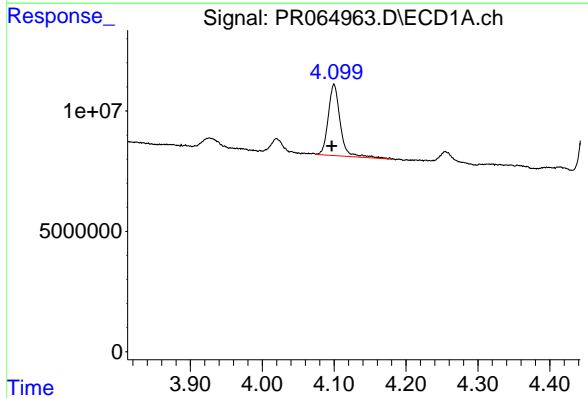
#9 AR-1221-2

R.T.: 4.020 min
Delta R.T.: 0.001 min
Response: 6655386
Conc: 131.94 ng/ml



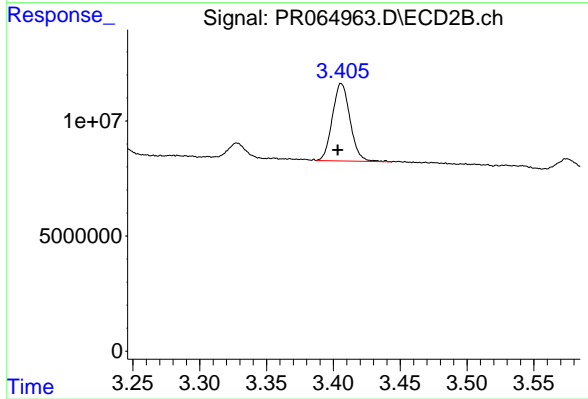
#9 AR-1221-2

R.T.: 3.328 min
Delta R.T.: 0.003 min
Response: 6258351
Conc: 138.52 ng/ml



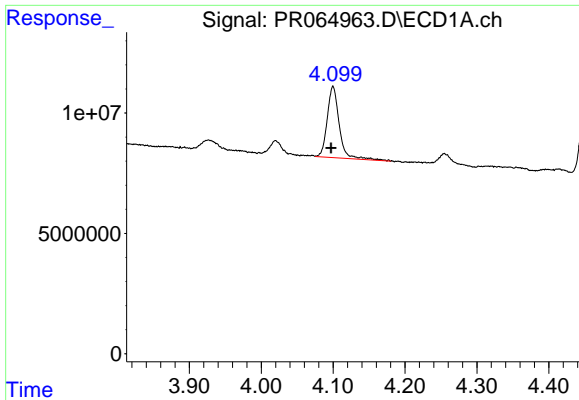
#10 AR-1221-3

R.T.: 4.100 min
Delta R.T.: 0.003 min
Response: 34538925
Conc: 212.07 ng/ml



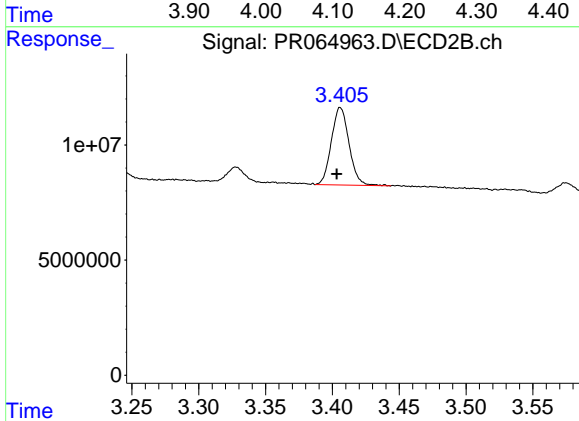
#10 AR-1221-3

R.T.: 3.406 min
Delta R.T.: 0.003 min
Response: 31128649
Conc: 206.19 ng/ml



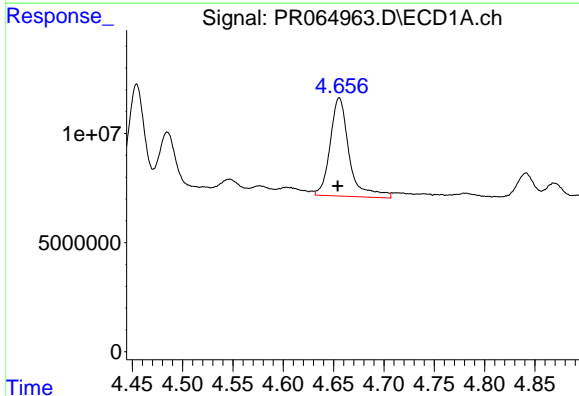
#11 AR-1232-1

R.T.: 4.100 min
Delta R.T.: 0.003 min
Response: 34538925
Conc: 264.69 ng/ml



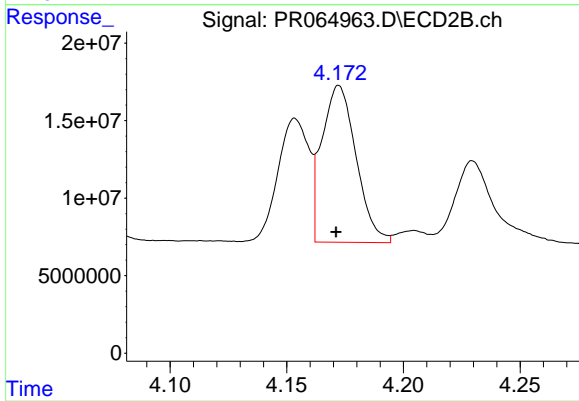
#11 AR-1232-1

R.T.: 3.406 min
Delta R.T.: 0.003 min
Response: 31128649
Conc: 260.15 ng/ml



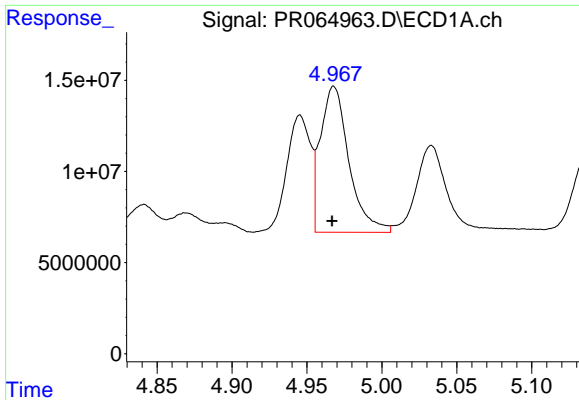
#12 AR-1232-2

R.T.: 4.656 min
Delta R.T.: 0.001 min
Response: 59256374
Conc: 823.06 ng/ml



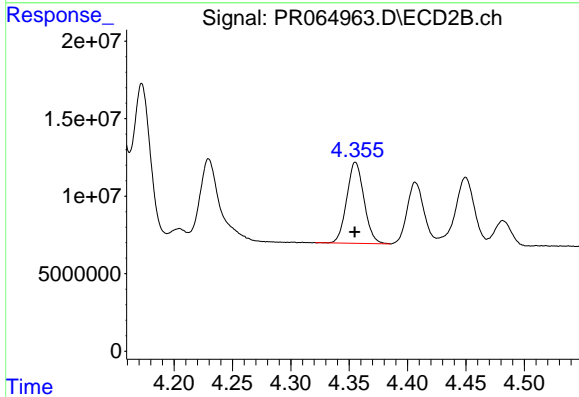
#12 AR-1232-2

R.T.: 4.172 min
Delta R.T.: 0.001 min
Response: 103419266
Conc: 878.69 ng/ml



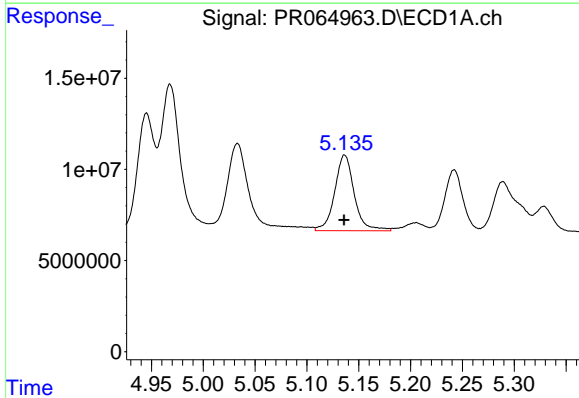
#13 AR-1232-3

R.T.: 4.968 min
Delta R.T.: 0.001 min
Response: 106232818
Conc: 841.14 ng/ml



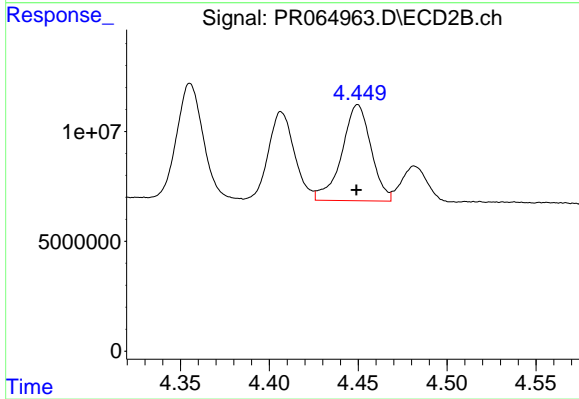
#13 AR-1232-3

R.T.: 4.355 min
Delta R.T.: 0.000 min
Response: 53851198
Conc: 863.23 ng/ml



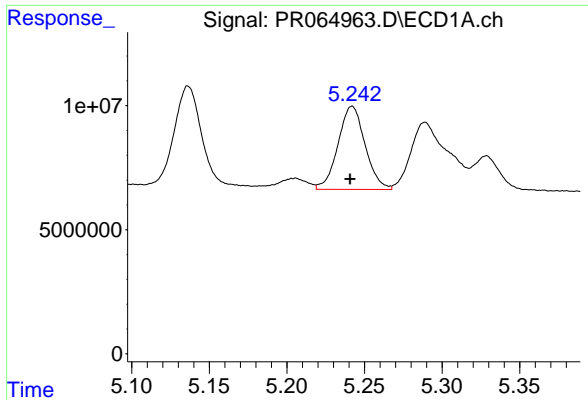
#14 AR-1232-4

R.T.: 5.136 min
Delta R.T.: 0.000 min
Response: 54548171
Conc: 839.91 ng/ml



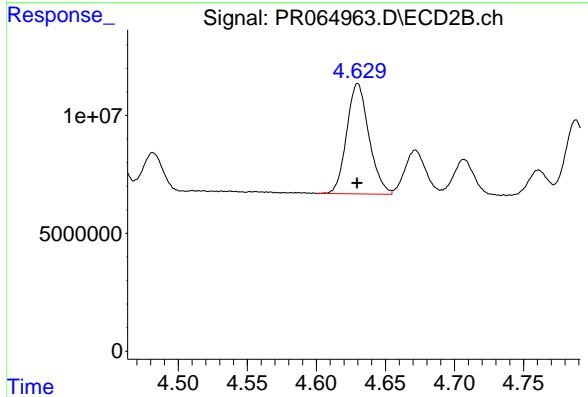
#14 AR-1232-4

R.T.: 4.450 min
Delta R.T.: 0.000 min
Response: 50060239
Conc: 914.18 ng/ml



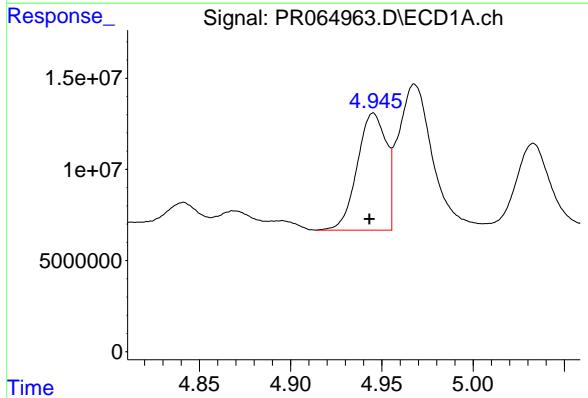
#15 AR-1232-5

R.T.: 5.242 min
Delta R.T.: 0.001 min
Response: 40858883
Conc: 858.79 ng/ml



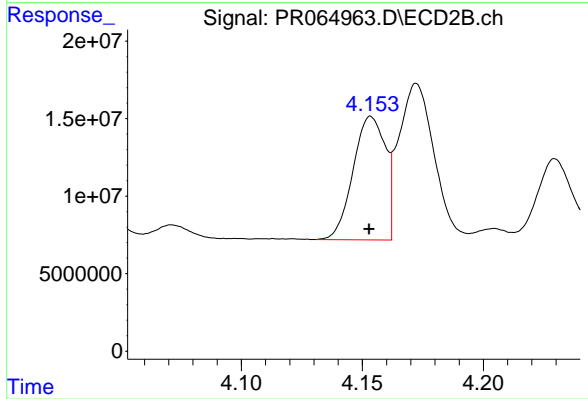
#15 AR-1232-5

R.T.: 4.630 min
Delta R.T.: 0.000 min
Response: 52472865
Conc: 880.53 ng/ml



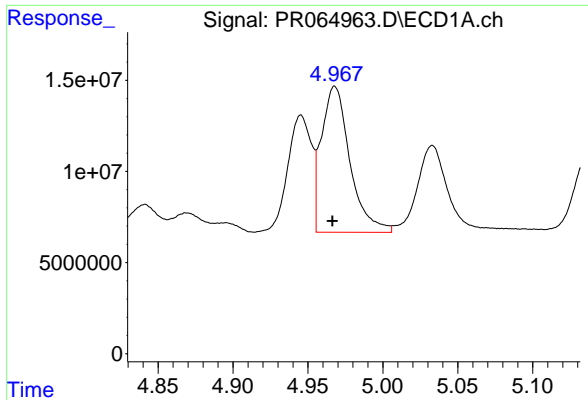
#16 AR-1242-1

R.T.: 4.945 min
Delta R.T.: 0.002 min
Response: 70947102
Conc: 464.86 ng/ml



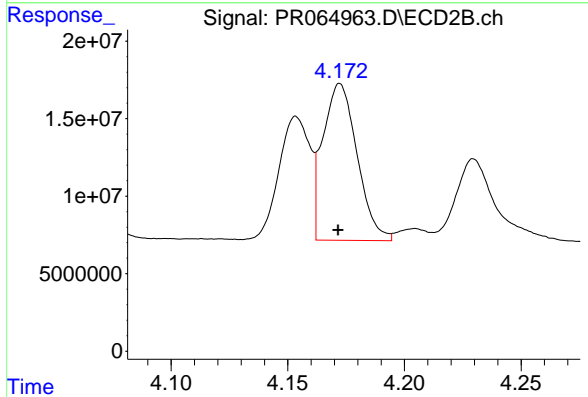
#16 AR-1242-1

R.T.: 4.154 min
Delta R.T.: 0.000 min
Response: 73713555
Conc: 473.39 ng/ml



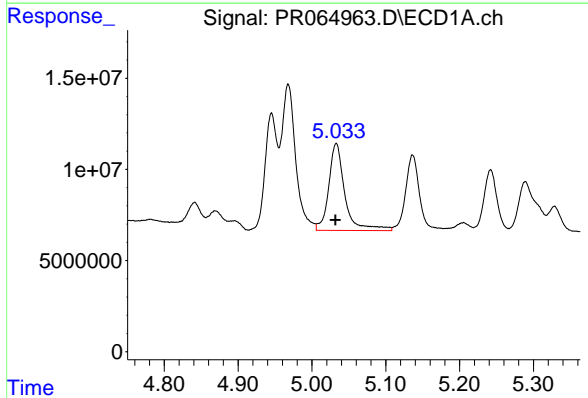
#17 AR-1242-2

R.T.: 4.968 min
Delta R.T.: 0.002 min
Response: 106232818
Conc: 474.09 ng/ml



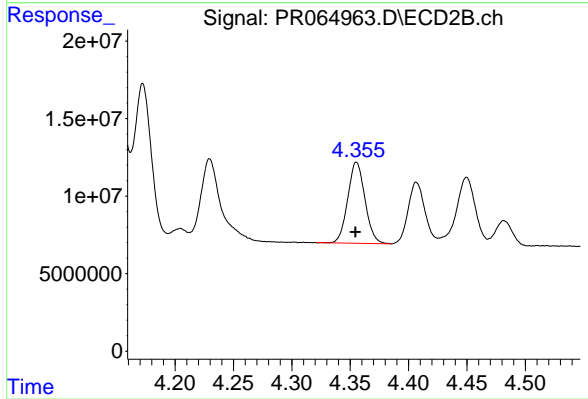
#17 AR-1242-2

R.T.: 4.172 min
Delta R.T.: 0.000 min
Response: 103419266
Conc: 487.57 ng/ml



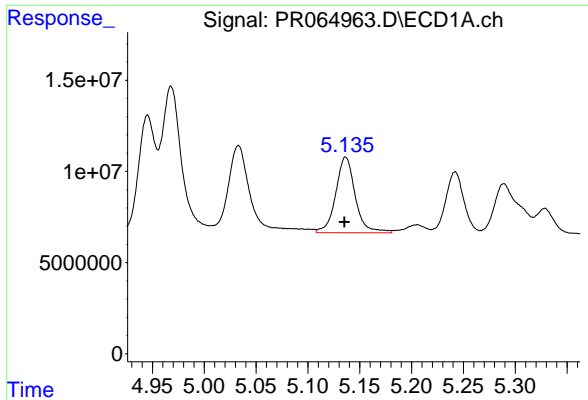
#18 AR-1242-3

R.T.: 5.033 min
Delta R.T.: 0.001 min
Response: 72420805
Conc: 507.75 ng/ml

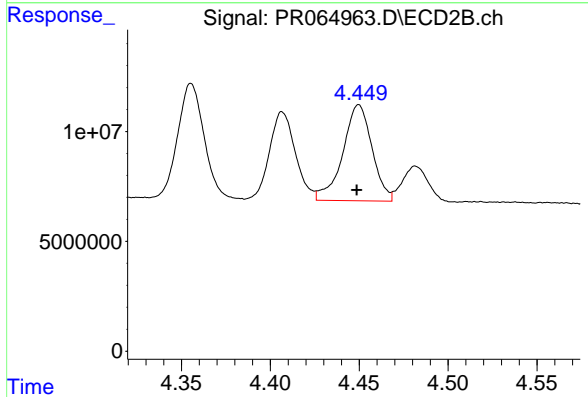


#18 AR-1242-3

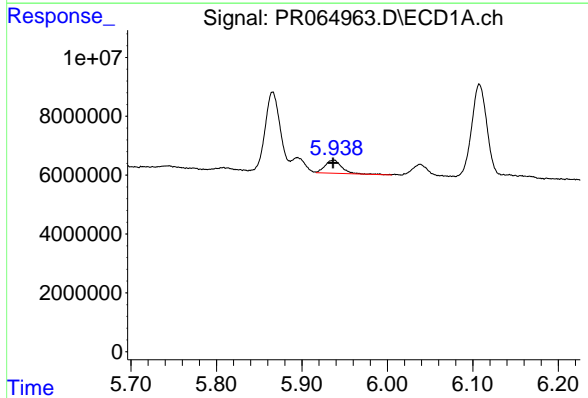
R.T.: 4.355 min
Delta R.T.: 0.000 min
Response: 53851198
Conc: 465.33 ng/ml



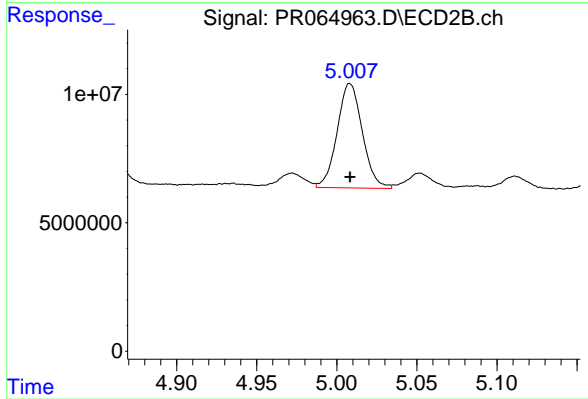
#19 AR-1242-4
R.T.: 5.136 min
Delta R.T.: 0.001 min
Response: 54548171
Conc: 479.33 ng/ml



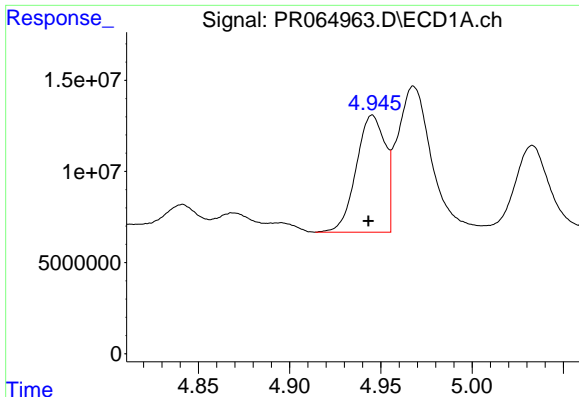
#19 AR-1242-4
R.T.: 4.450 min
Delta R.T.: 0.001 min
Response: 50060239
Conc: 446.94 ng/ml



#20 AR-1242-5
R.T.: 5.938 min
Delta R.T.: 0.001 min
Response: 6106184
Conc: 50.14 ng/ml

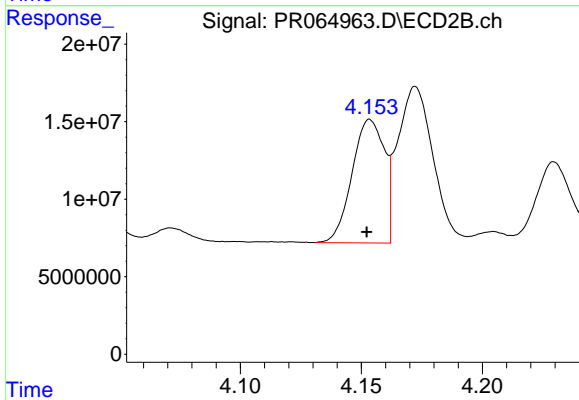


#20 AR-1242-5
R.T.: 5.008 min
Delta R.T.: 0.000 min
Response: 44545365
Conc: 311.91 ng/ml



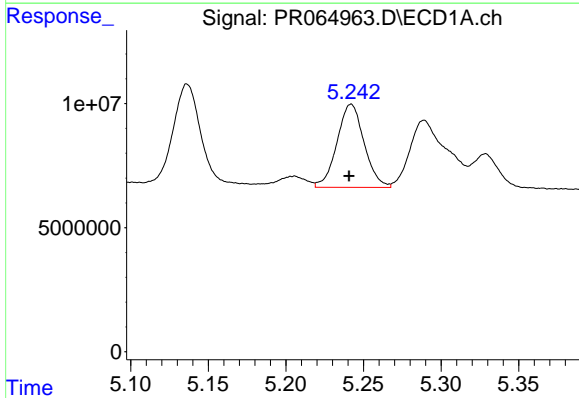
#21 AR-1248-1

R.T.: 4.945 min
Delta R.T.: 0.002 min
Response: 70947102
Conc: 605.76 ng/ml



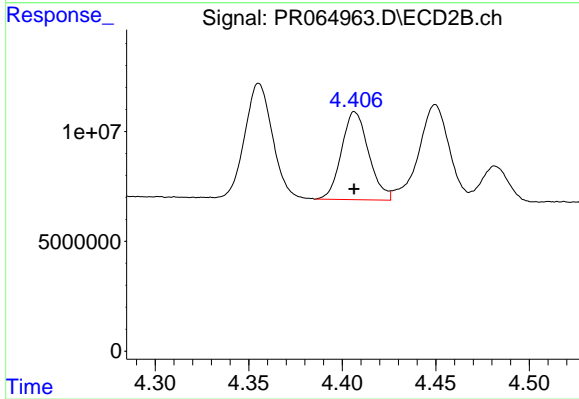
#21 AR-1248-1

R.T.: 4.154 min
Delta R.T.: 0.001 min
Response: 73713555
Conc: 625.29 ng/ml



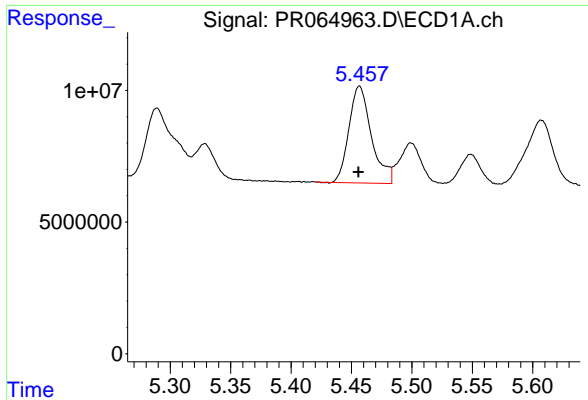
#22 AR-1248-2

R.T.: 5.242 min
Delta R.T.: 0.001 min
Response: 40858883
Conc: 242.49 ng/ml



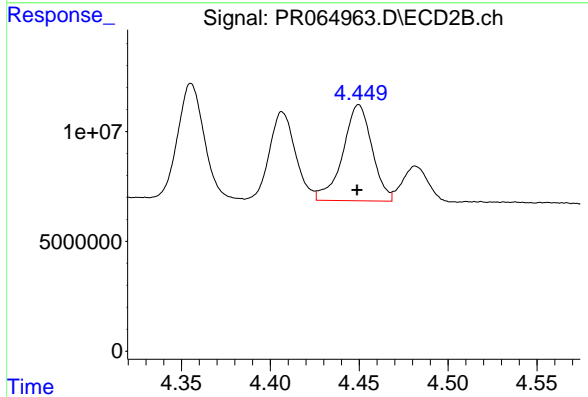
#22 AR-1248-2

R.T.: 4.407 min
Delta R.T.: 0.000 min
Response: 40462801
Conc: 246.73 ng/ml



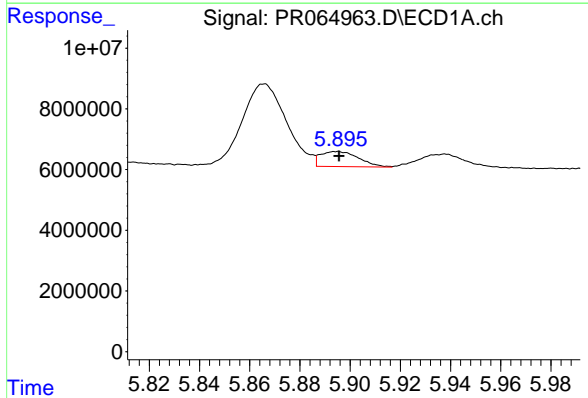
#23 AR-1248-3

R.T.: 5.457 min
 Delta R.T.: 0.000 min
 Response: 47814704
 Conc: 241.72 ng/ml



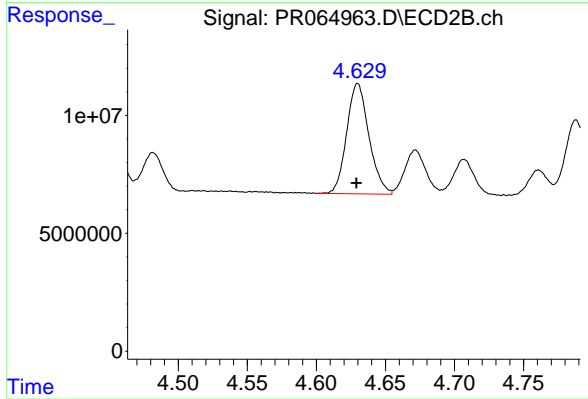
#23 AR-1248-3

R.T.: 4.450 min
 Delta R.T.: 0.001 min
 Response: 50060239
 Conc: 296.30 ng/ml



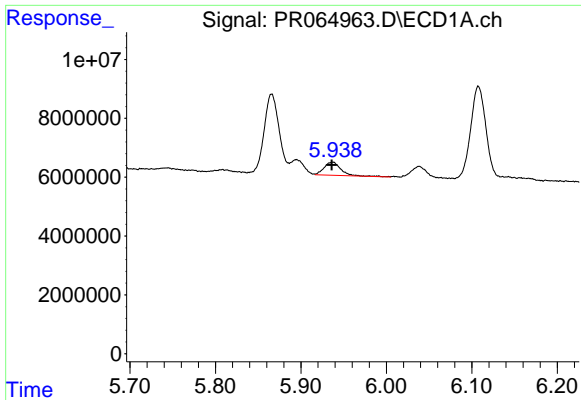
#24 AR-1248-4

R.T.: 5.895 min
 Delta R.T.: 0.000 min
 Response: 5282234
 Conc: 25.22 ng/ml



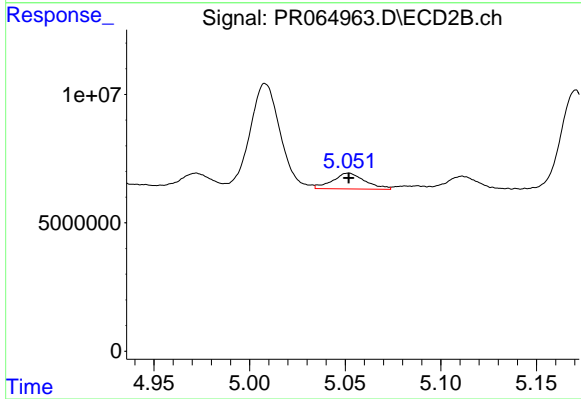
#24 AR-1248-4

R.T.: 4.630 min
 Delta R.T.: 0.001 min
 Response: 52472865
 Conc: 257.37 ng/ml



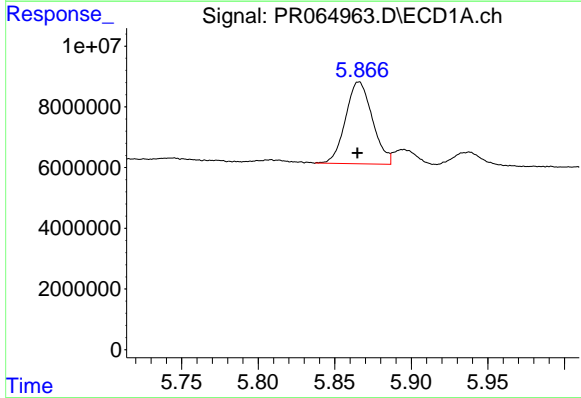
#25 AR-1248-5

R.T.: 5.938 min
Delta R.T.: 0.002 min
Response: 6106184
Conc: 29.10 ng/ml



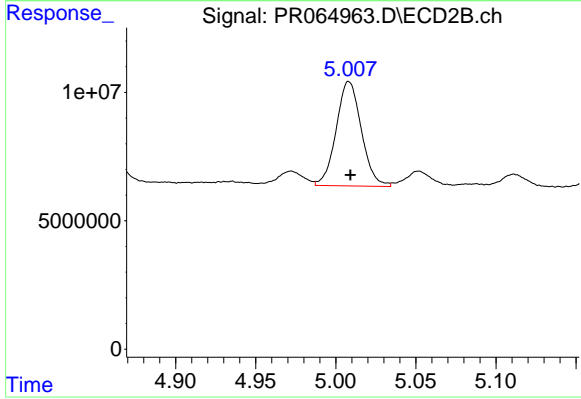
#25 AR-1248-5

R.T.: 5.052 min
Delta R.T.: 0.000 min
Response: 7327906
Conc: 36.48 ng/ml



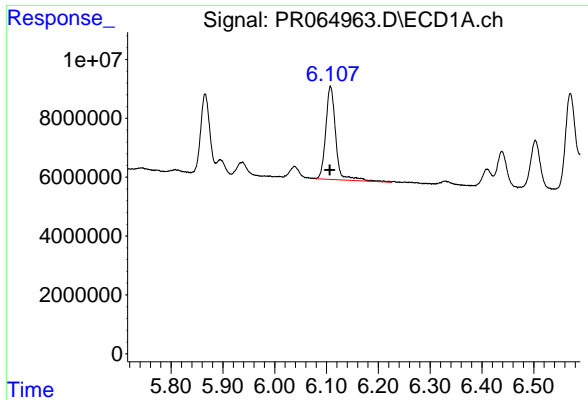
#26 AR-1254-1

R.T.: 5.866 min
Delta R.T.: 0.000 min
Response: 32955714
Conc: 150.65 ng/ml



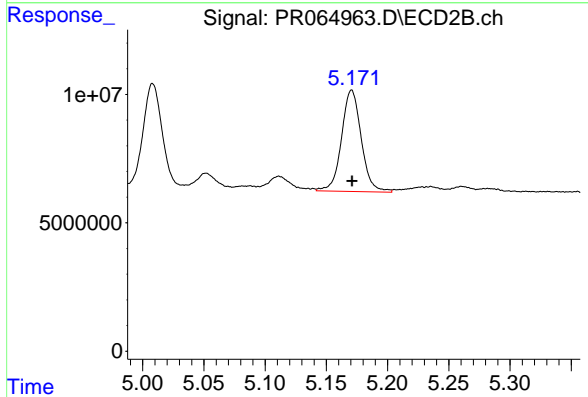
#26 AR-1254-1

R.T.: 5.008 min
Delta R.T.: 0.000 min
Response: 44545365
Conc: 144.02 ng/ml



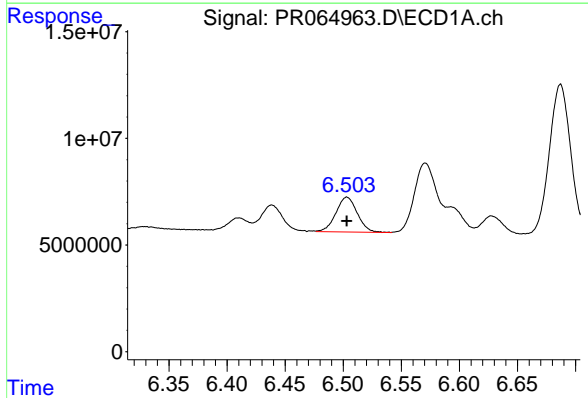
#27 AR-1254-2

R.T.: 6.108 min
 Delta R.T.: 0.001 min
 Response: 42510846
 Conc: 129.23 ng/ml



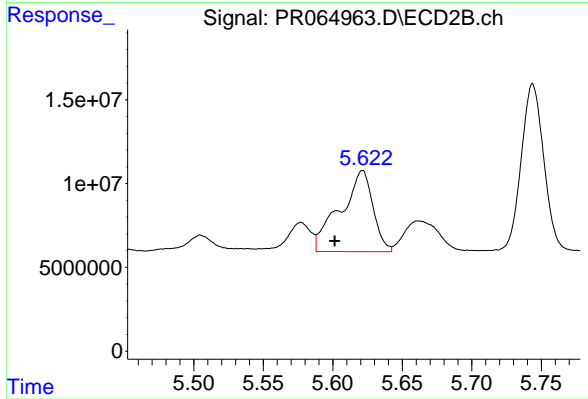
#27 AR-1254-2

R.T.: 5.171 min
 Delta R.T.: 0.000 min
 Response: 44324516
 Conc: 165.69 ng/ml



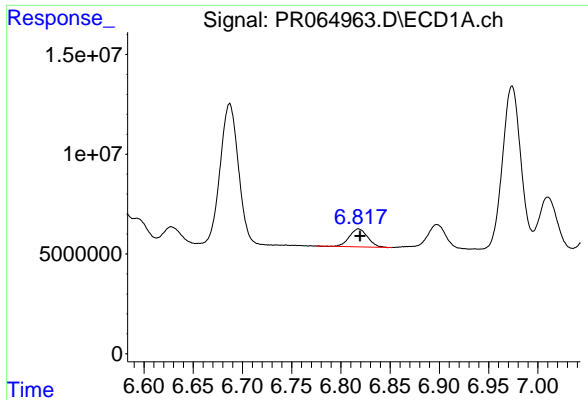
#28 AR-1254-3

R.T.: 6.503 min
 Delta R.T.: 0.000 min
 Response: 20940788
 Conc: 62.62 ng/ml



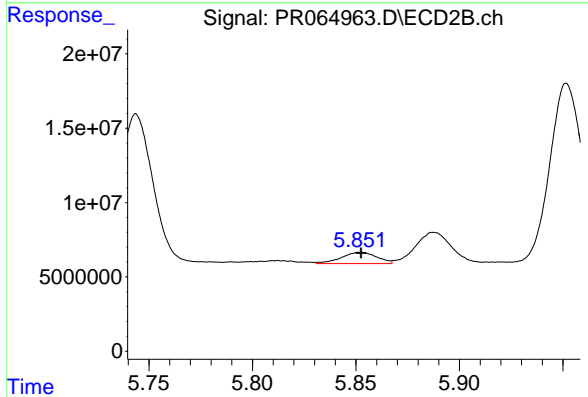
#28 AR-1254-3

R.T.: 5.621 min
 Delta R.T.: 0.020 min
 Response: 79360347
 Conc: 184.12 ng/ml



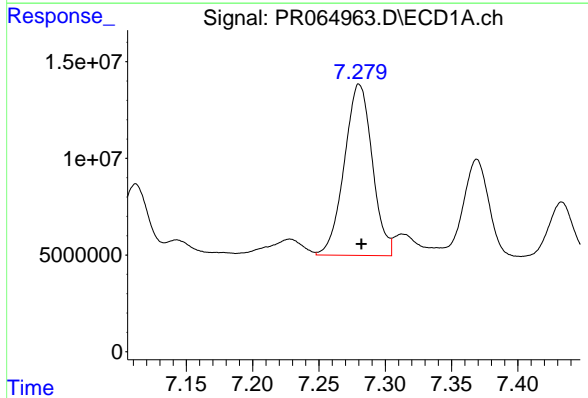
#29 AR-1254-4

R.T.: 6.818 min
Delta R.T.: -0.001 min
Response: 11592322
Conc: 50.66 ng/ml



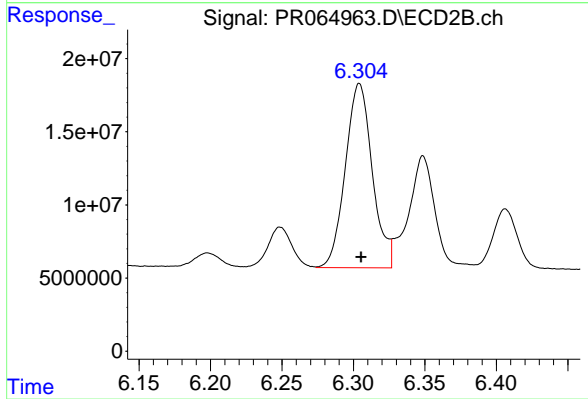
#29 AR-1254-4

R.T.: 5.852 min
Delta R.T.: 0.000 min
Response: 9070769
Conc: 33.75 ng/ml



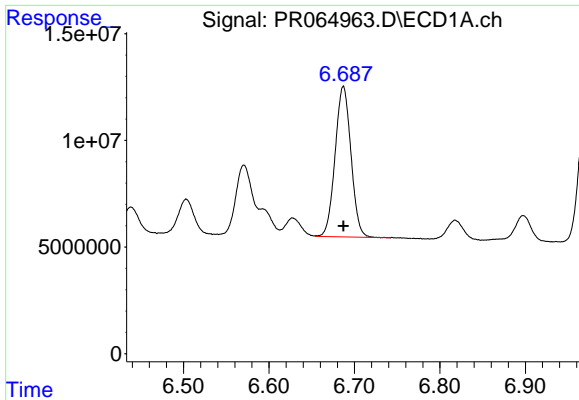
#30 AR-1254-5

R.T.: 7.280 min
Delta R.T.: -0.002 min
Response: 129845784
Conc: 498.53 ng/ml



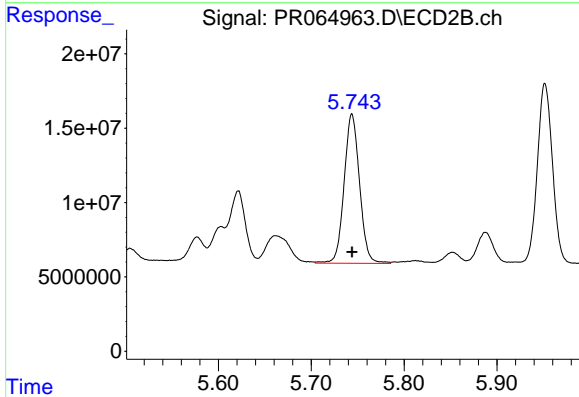
#30 AR-1254-5

R.T.: 6.304 min
Delta R.T.: -0.001 min
Response: 165261683
Conc: 429.98 ng/ml



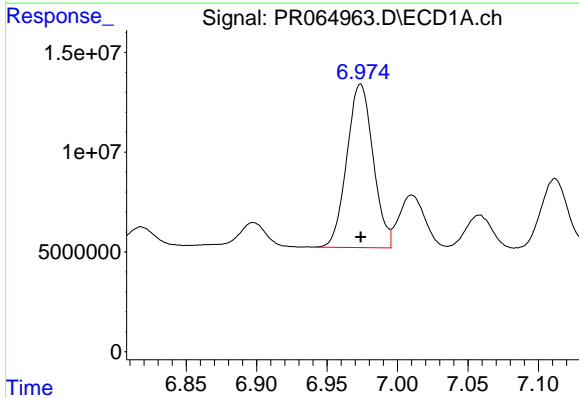
#31 AR-1260-1

R.T.: 6.687 min
 Delta R.T.: 0.000 min
 Response: 91090828
 Conc: 336.43 ng/ml



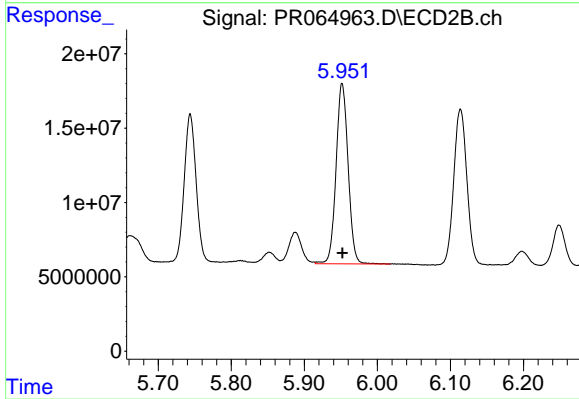
#31 AR-1260-1

R.T.: 5.744 min
 Delta R.T.: 0.000 min
 Response: 116076393
 Conc: 378.88 ng/ml



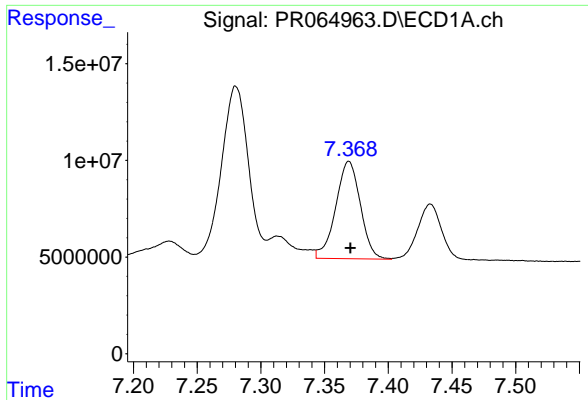
#32 AR-1260-2

R.T.: 6.974 min
 Delta R.T.: 0.000 min
 Response: 106493614
 Conc: 345.81 ng/ml



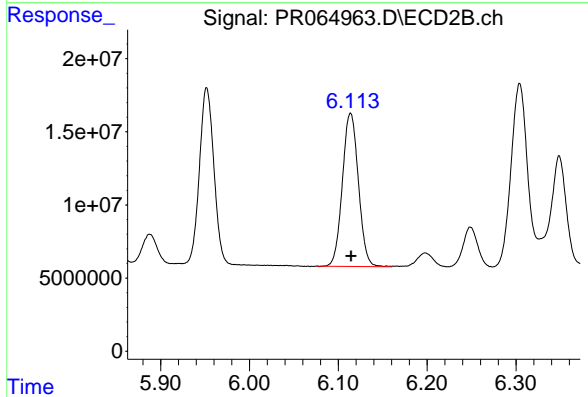
#32 AR-1260-2

R.T.: 5.952 min
 Delta R.T.: 0.000 min
 Response: 139391270
 Conc: 379.74 ng/ml



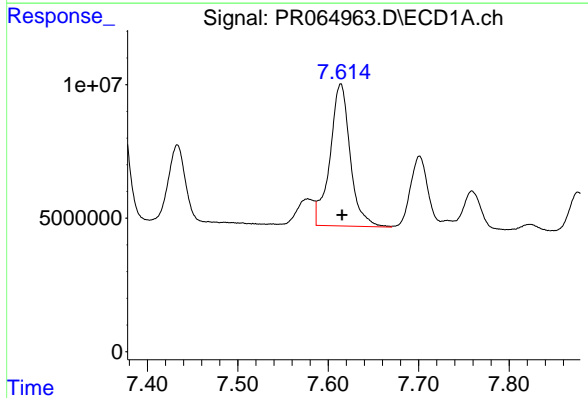
#33 AR-1260-3

R.T.: 7.369 min
Delta R.T.: -0.001 min
Response: 67979805
Conc: 296.00 ng/ml



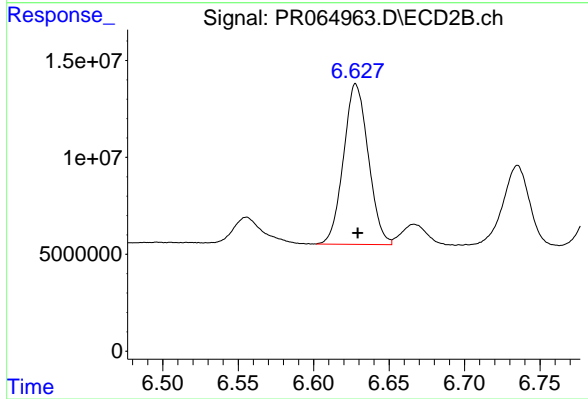
#33 AR-1260-3

R.T.: 6.114 min
Delta R.T.: 0.000 min
Response: 131098611
Conc: 379.19 ng/ml



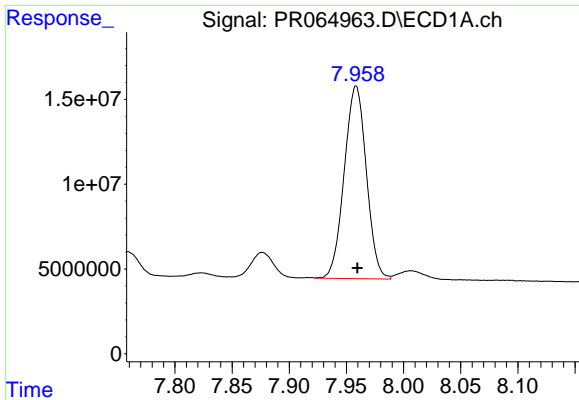
#34 AR-1260-4

R.T.: 7.614 min
Delta R.T.: -0.001 min
Response: 82495221
Conc: 325.11 ng/ml



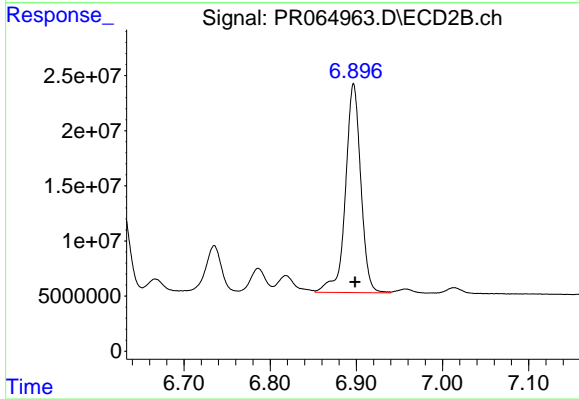
#34 AR-1260-4

R.T.: 6.628 min
Delta R.T.: -0.001 min
Response: 94545664
Conc: 330.75 ng/ml



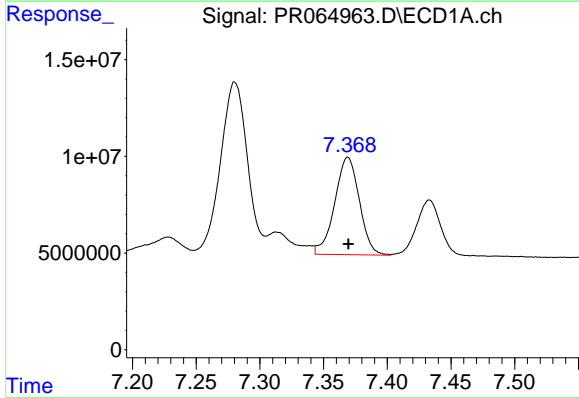
#35 AR-1260-5

R.T.: 7.958 min
Delta R.T.: -0.001 min
Response: 153198171
Conc: 324.84 ng/ml



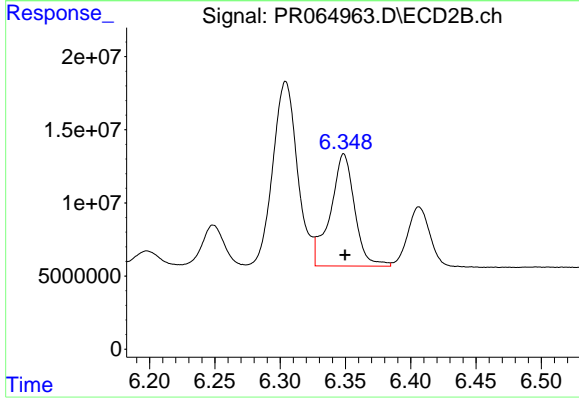
#35 AR-1260-5

R.T.: 6.897 min
Delta R.T.: -0.001 min
Response: 234010600
Conc: 350.18 ng/ml



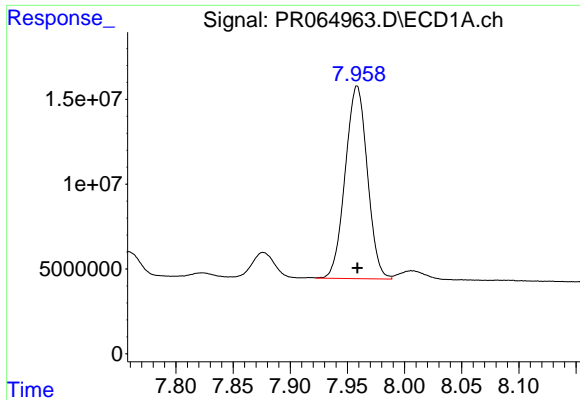
#36 AR-1262-1

R.T.: 7.369 min
Delta R.T.: 0.000 min
Response: 67979805
Conc: 216.88 ng/ml



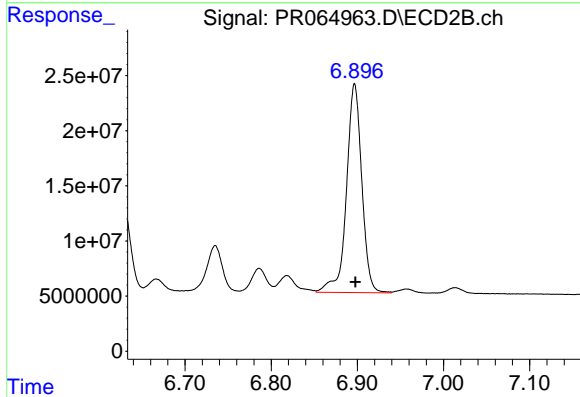
#36 AR-1262-1

R.T.: 6.349 min
Delta R.T.: 0.000 min
Response: 99336666
Conc: 251.59 ng/ml



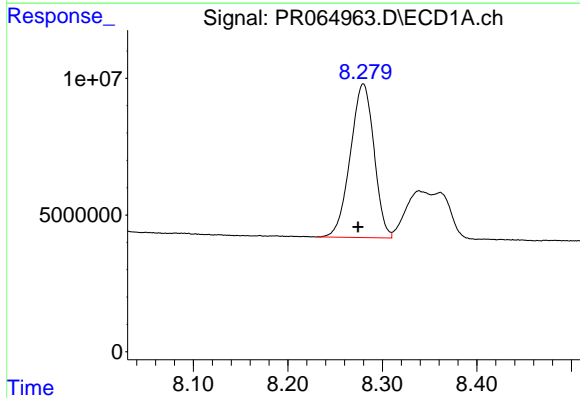
#37 AR-1262-2

R.T.: 7.958 min
 Delta R.T.: 0.000 min
 Response: 153198171
 Conc: 297.89 ng/ml



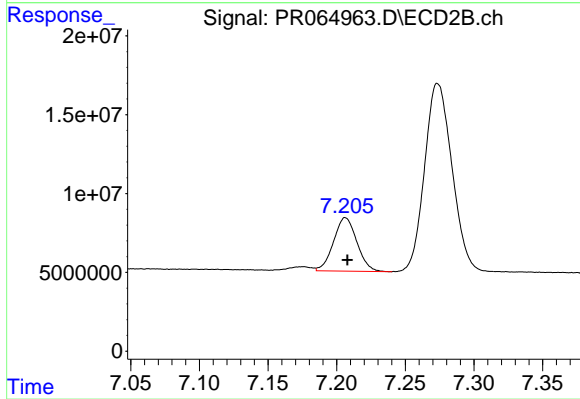
#37 AR-1262-2

R.T.: 6.897 min
 Delta R.T.: 0.000 min
 Response: 234010600
 Conc: 327.52 ng/ml



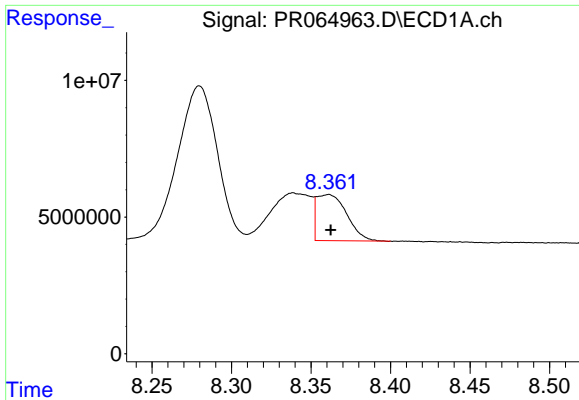
#38 AR-1262-3

R.T.: 8.280 min
 Delta R.T.: 0.005 min
 Response: 97784552
 Conc: 282.17 ng/ml



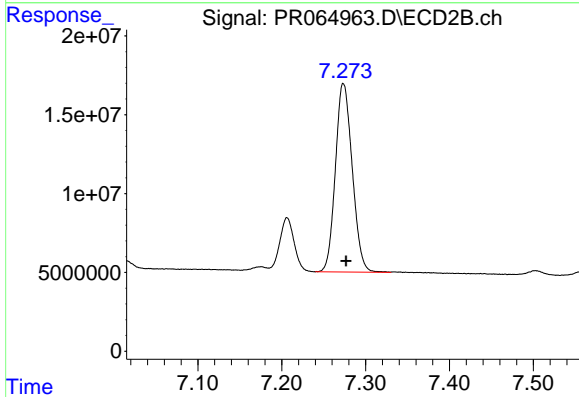
#38 AR-1262-3

R.T.: 7.206 min
 Delta R.T.: -0.001 min
 Response: 40218318
 Conc: 147.57 ng/ml



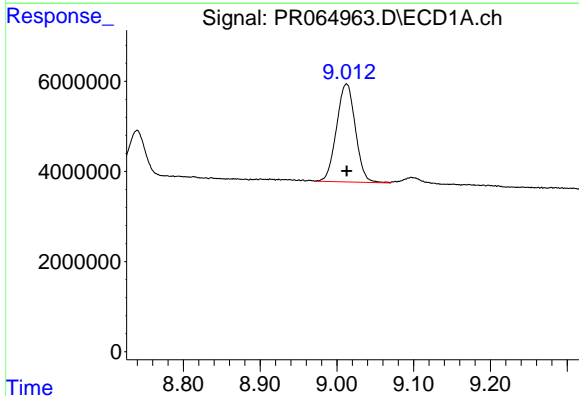
#39 AR-1262-4

R.T.: 8.361 min
Delta R.T.: -0.001 min
Response: 22299866
Conc: 84.63 ng/ml



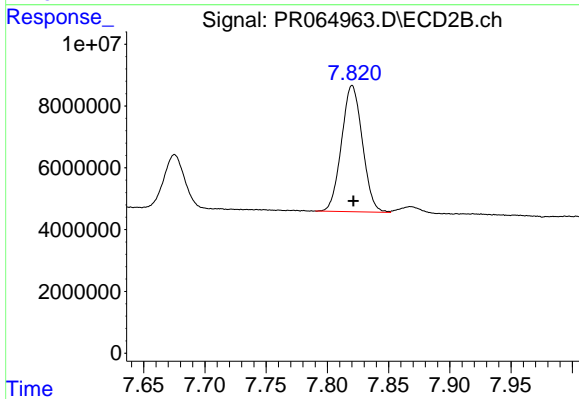
#39 AR-1262-4

R.T.: 7.274 min
Delta R.T.: -0.003 min
Response: 167123456
Conc: 320.19 ng/ml



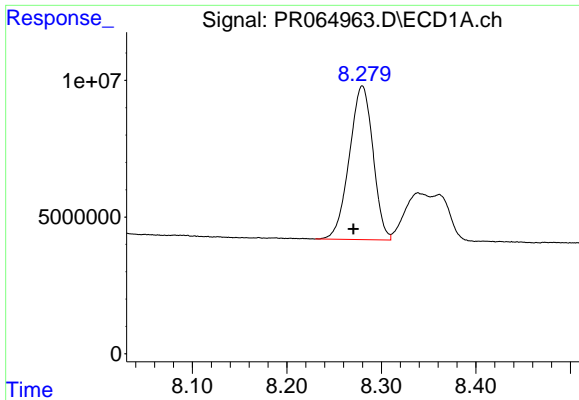
#40 AR-1262-5

R.T.: 9.013 min
Delta R.T.: 0.000 min
Response: 37006381
Conc: 203.12 ng/ml



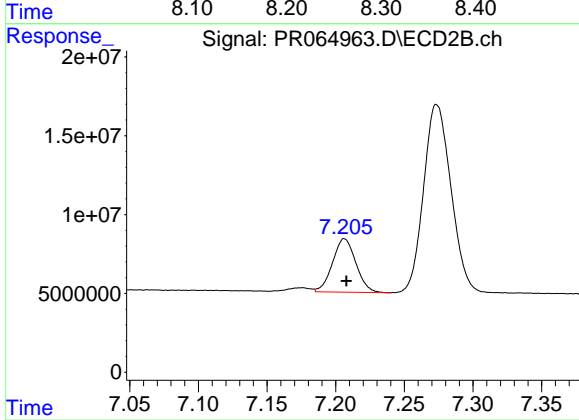
#40 AR-1262-5

R.T.: 7.820 min
Delta R.T.: -0.001 min
Response: 48462313
Conc: 204.81 ng/ml



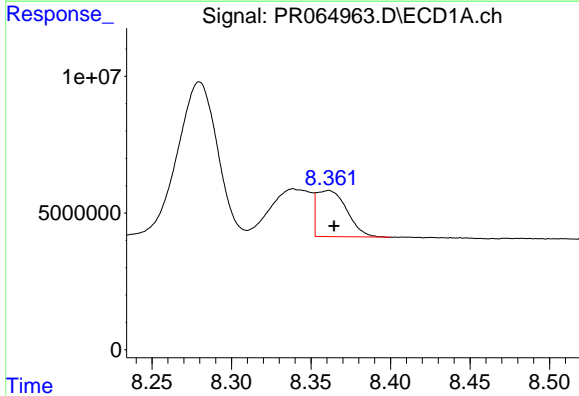
#41 AR-1268-1

R.T.: 8.280 min
Delta R.T.: 0.009 min
Response: 97784552
Conc: 155.40 ng/ml



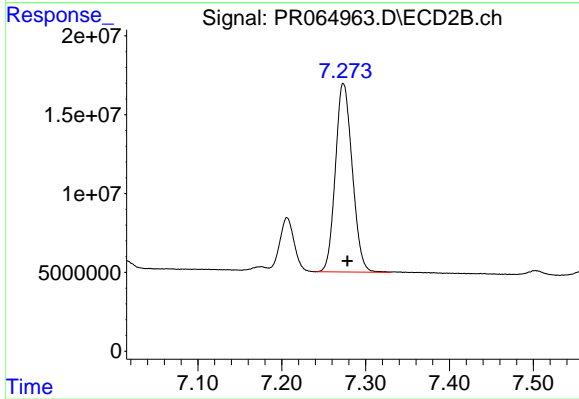
#41 AR-1268-1

R.T.: 7.206 min
Delta R.T.: -0.001 min
Response: 40218318
Conc: 48.39 ng/ml



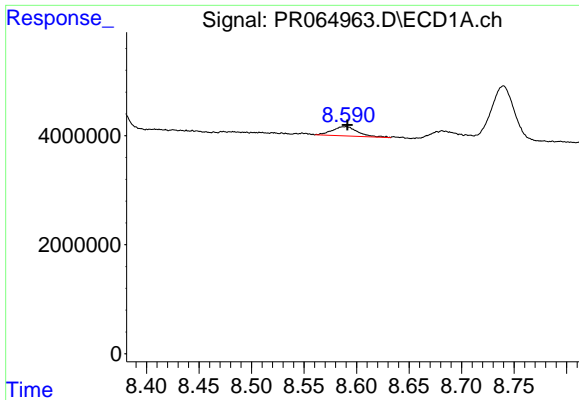
#42 AR-1268-2

R.T.: 8.361 min
Delta R.T.: -0.004 min
Response: 22299866
Conc: 39.49 ng/ml



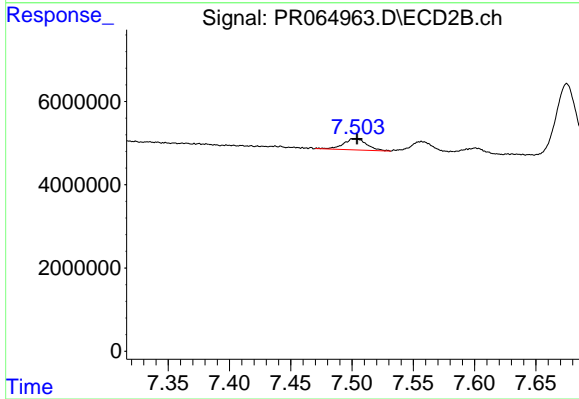
#42 AR-1268-2

R.T.: 7.274 min
Delta R.T.: -0.005 min
Response: 167123456
Conc: 214.73 ng/ml



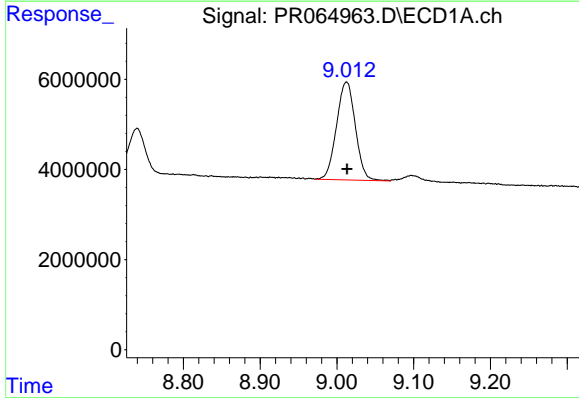
#43 AR-1268-3

R.T.: 8.590 min
Delta R.T.: -0.002 min
Response: 2887034
Conc: 5.82 ng/ml



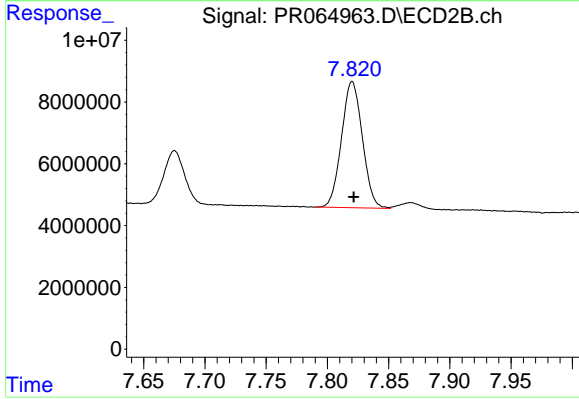
#43 AR-1268-3

R.T.: 7.502 min
Delta R.T.: -0.002 min
Response: 3647316
Conc: 5.51 ng/ml



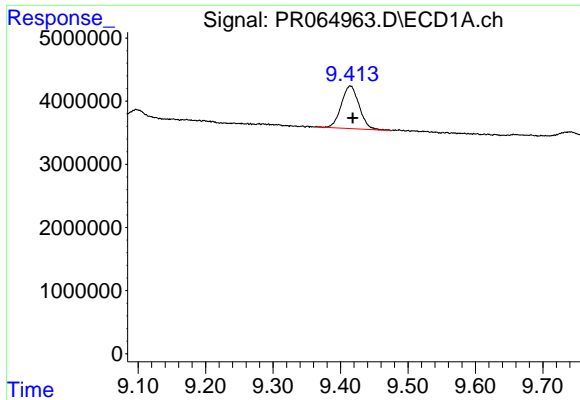
#44 AR-1268-4

R.T.: 9.013 min
Delta R.T.: 0.000 min
Response: 37006381
Conc: 174.46 ng/ml



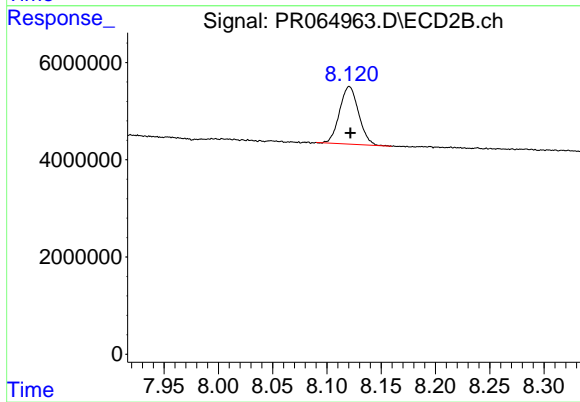
#44 AR-1268-4

R.T.: 7.820 min
Delta R.T.: -0.001 min
Response: 48462313
Conc: 175.09 ng/ml



#45 AR-1268-5

R.T.: 9.415 min
Delta R.T.: -0.003 min
Response: 12420114
Conc: 8.20 ng/ml



#45 AR-1268-5

R.T.: 8.121 min
Delta R.T.: -0.001 min
Response: 14401391
Conc: 7.21 ng/ml