

Data Path : Z:\pestpcbsrv\HPCHEM1\ECD\_R\Data\PR012324\  
 Data File : PR065158.D  
 Signal(s) : Signal #1: ECD1A.ch Signal #2: ECD2B.ch  
 Acq On : 23 Jan 2024 13:54  
 Operator : AJ\MA  
 Sample : P157-06DL2 200X  
 Misc :  
 ALS Vial : 16 Sample Multiplier: 1

Instrument :  
 ECD\_R  
 ClientSampleId :

Integration File signal 1: autoint1.e  
 Integration File signal 2: autoint2.e  
 Quant Time: Jan 23 21:51:12 2024  
 Quant Method : Z:\pestpcbsrv\HPCHEM1\ECD\_R\Method\PR011224CLP.M  
 Quant Title : GC EXTRACTABLES  
 QLast Update : Fri Jan 19 21:16:50 2024  
 Response via : Initial Calibration  
 Integrator: ChemStation

Volume Inj. : 1 µl  
 Signal #1 Phase : ZB MR1 Signal #2 Phase: ZB MR2  
 Signal #1 Info : 30Mx0.32mmx 0.5µm Signal #2 Info : 30M x 0.32mm x 0.25µm

Compound	RT#1	RT#2	Resp#1	Resp#2	ng/ml	ng/ml
System Monitoring Compounds						
1) SA Tetrachlo...	3.689	3.004	2256018	1362030	0.345	0.234 #
2) SA Decachlor...	9.741	8.371	805968	1372363	0.331	0.486 #
Target Compounds						
3) L1 AR-1016-1	4.944	4.151	57485792	57114244	300.527	293.834
4) L1 AR-1016-2	4.966	4.169	227.4E6	231.0E6	806.824	860.641
5) L1 AR-1016-3	5.034	4.352	37243360	101.6E6	206.705	697.672 #
6) L1 AR-1016-4	5.135	4.404	100.2E6	77477887	690.542	683.105
7) L1 AR-1016-5	5.456	4.627	100.2E6	100.9E6	679.472	674.263
8) L2 AR-1221-1	3.922	3.232	2643844	928082	35.688	14.372 #
9) L2 AR-1221-2	4.017	3.323	5768947	3685809	114.364	81.578 #
10) L2 AR-1221-3	4.096	3.401	7651417	6641913	46.980	43.994
11) L3 AR-1232-1	4.096	3.401	7651417	6641913	58.637	55.509
12) L3 AR-1232-2	4.655	4.169	69627683	231.0E6	967.119	1962.341 #
13) L3 AR-1232-3	4.966	4.352	227.4E6	101.6E6	1800.642	1629.426
14) L3 AR-1232-4	5.135	4.446	100.2E6	82964038	1543.130	1515.049
15) L3 AR-1232-5	5.240	4.627	79834153	100.9E6	1677.998	1693.300
16) L4 AR-1242-1	4.944	4.151	57485792	57114244	376.661	366.791
17) L4 AR-1242-2	4.966	4.169	227.4E6	231.0E6	1014.879	1088.861
18) L4 AR-1242-3	5.034	4.352	37243360	101.6E6	261.119	878.351 #
19) L4 AR-1242-4	5.135	4.446	100.2E6	82964038	880.647	740.709
20) L4 AR-1242-5	5.935	5.006	103.8E6	149.3E6	852.434	1045.638
21) L5 AR-1248-1	4.944	4.151	57485792	57114244	490.826	484.486
22) L5 AR-1248-2	5.240	4.404	79834153	77477887	473.803	472.441
23) L5 AR-1248-3	5.456	4.446	100.2E6	82964038	506.349	491.057
24) L5 AR-1248-4	5.895	4.627	78656887	100.9E6	375.527	494.931 #
25) L5 AR-1248-5	5.935	5.049	103.8E6	99859938	494.763	497.156
26) L6 AR-1254-1	5.864	5.006	106.9E6	149.3E6	488.750	482.785
27) L6 AR-1254-2	6.106	5.168	154.4E6	92703318	469.205	346.539 #
28) L6 AR-1254-3	6.502	5.598	119.0E6	149.3E6	355.798	346.319
29) L6 AR-1254-4	6.819	5.849	77491595	86279191	338.637	320.986
30) L6 AR-1254-5	7.280	6.301	82363844	119.5E6	316.229	311.039
31) L7 AR-1260-1	6.686	5.742	45511317	77052192	168.088	251.503 #
32) L7 AR-1260-2	6.973	5.949	51488772	57994955	167.195	157.993
33) L7 AR-1260-3	7.367	6.109	6686175	55389731	29.113	160.208 #
34) L7 AR-1260-4	7.592	6.624	33382793	8855691	131.558	30.980 #
35) L7 AR-1260-5	7.956	6.893	16453910	20776369	34.888	31.090
36) L8 AR-1262-1	7.367	6.374	6686175	7554633	21.331	19.134
37) L8 AR-1262-2	7.956	6.893	16453910	20776369	31.994	29.078
38) L8 AR-1262-3	8.279	7.203	12527153	3400019	36.149	12.476 #
39) L8 AR-1262-4	8.360	7.269	1888031	20271348	7.165	38.837 #
40) L8 AR-1262-5	9.009	7.814	2587044	5093016	14.200	21.524 #
41) L9 AR-1268-1	8.279	7.203	12527153	3400019	19.908	4.091 #

Data Path : Z:\pestpcbsrv\HPCHEM1\ECD\_R\Data\PR012324\  
 Data File : PR065158.D  
 Signal(s) : Signal #1: ECD1A.ch Signal #2: ECD2B.ch  
 Acq On : 23 Jan 2024 13:54  
 Operator : AJ\MA  
 Sample : P157-06DL2 200X  
 Misc :  
 ALS Vial : 16 Sample Multiplier: 1

Instrument :  
 ECD\_R  
 ClientSampleId :

Integration File signal 1: autoint1.e  
 Integration File signal 2: autoint2.e  
 Quant Time: Jan 23 21:51:12 2024  
 Quant Method : Z:\pestpcbsrv\HPCHEM1\ECD\_R\Method\PR011224CLP.M  
 Quant Title : GC EXTRACTABLES  
 QLast Update : Fri Jan 19 21:16:50 2024  
 Response via : Initial Calibration  
 Integrator: ChemStation

Volume Inj. : 1 µl  
 Signal #1 Phase : ZB MR1 Signal #2 Phase: ZB MR2  
 Signal #1 Info : 30Mx0.32mmx 0.5µm Signal #2 Info : 30M x 0.32mm x 0.25µm

	Compound	RT#1	RT#2	Resp#1	Resp#2	ng/ml	ng/ml
42)	L9 AR-1268-2	8.360	7.269	1888031	20271348	3.343	26.046 #
43)	L9 AR-1268-3	8.586	7.498	457299	678645	0.922	1.026
44)	L9 AR-1268-4	9.009	7.814	2587044	5093016	12.196	18.401 #
45)	L9 AR-1268-5	9.413	8.114	2161000	1037568	1.426	0.519 #

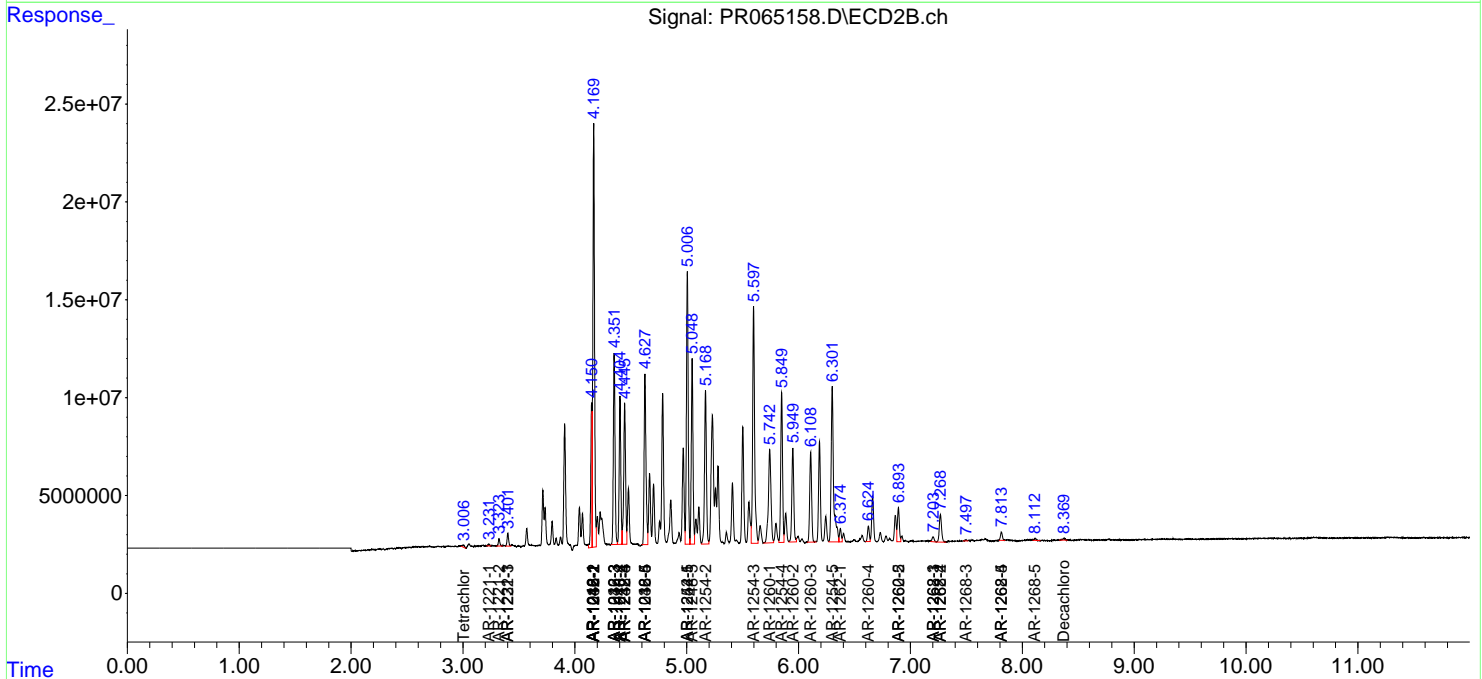
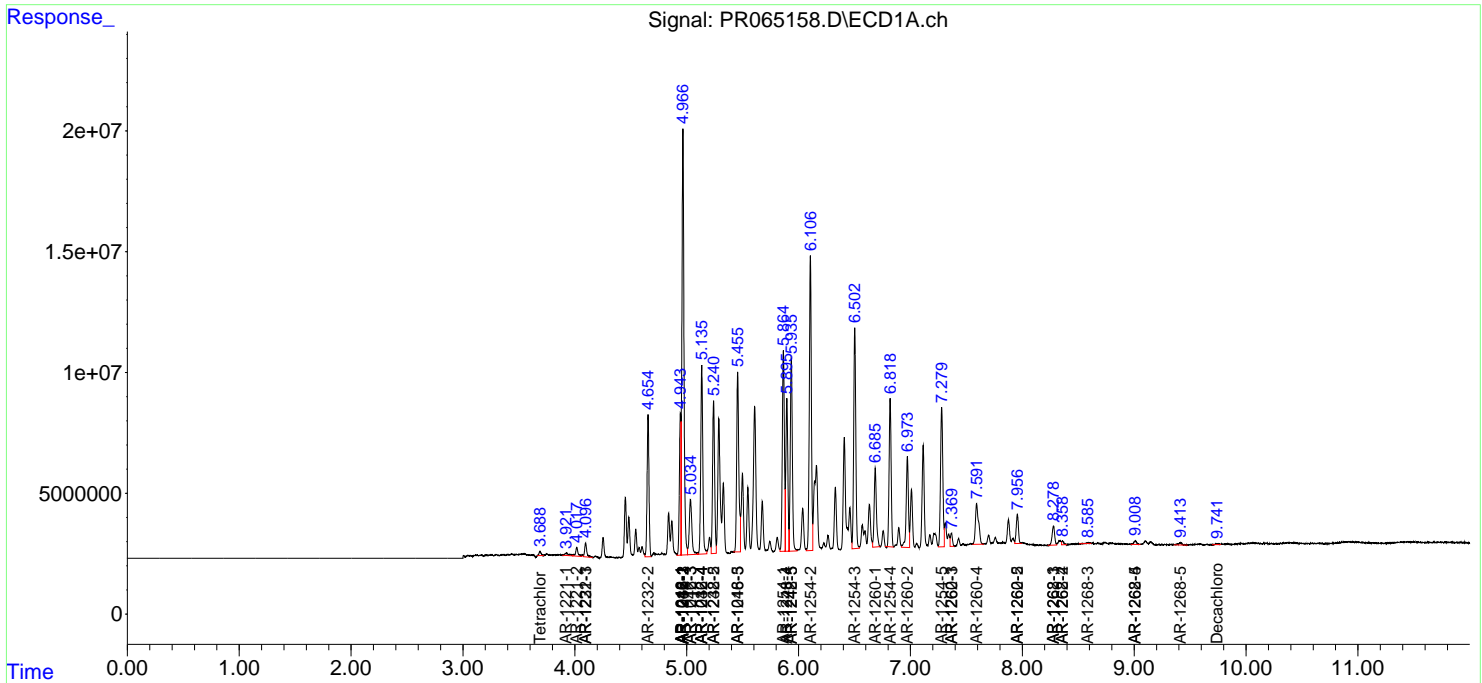
(f)=RT Delta > 1/2 Window (#)=Amounts differ by > 25% (m)=manual int.

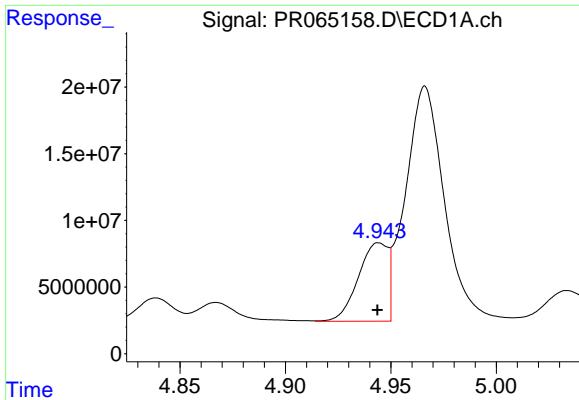
Data Path : Z:\pestpcbsrv\HPCHEM1\ECD\_R\Data\PR012324\  
 Data File : PR065158.D  
 Signal(s) : Signal #1: ECD1A.ch Signal #2: ECD2B.ch  
 Acq On : 23 Jan 2024 13:54  
 Operator : AJ\MA  
 Sample : P157-06DL2 200X  
 Misc :  
 ALS Vial : 16 Sample Multiplier: 1

Instrument :  
 ECD\_R  
 ClientSampleId :

Integration File signal 1: autoint1.e  
 Integration File signal 2: autoint2.e  
 Quant Time: Jan 23 21:51:12 2024  
 Quant Method : Z:\pestpcbsrv\HPCHEM1\ECD\_R\Method\PR011224CLP.M  
 Quant Title : GC EXTRACTABLES  
 QLast Update : Fri Jan 19 21:16:50 2024  
 Response via : Initial Calibration  
 Integrator: ChemStation

Volume Inj. : 1 µl  
 Signal #1 Phase : ZB MR1 Signal #2 Phase: ZB MR2  
 Signal #1 Info : 30Mx0.32mmx 0.5µm Signal #2 Info : 30M x 0.32mm x 0.25µm

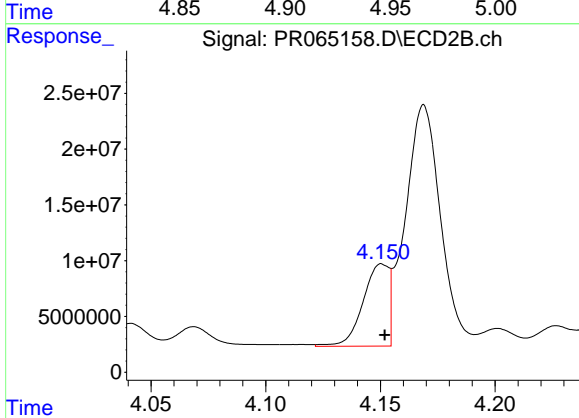




#3 AR-1016-1

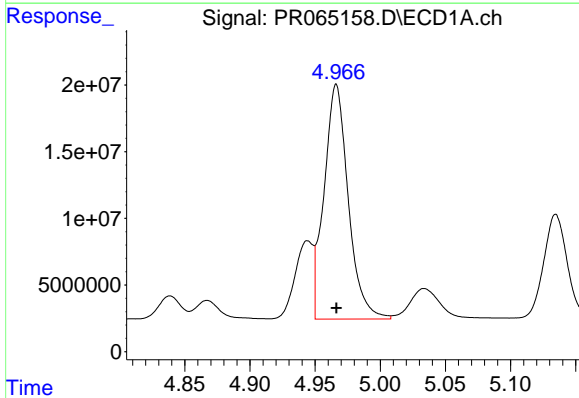
R.T.: 4.944 min  
 Delta R.T.: 0.000 min  
 Response: 57485792  
 Conc: 300.53 ng/ml

Instrument :  
 ECD\_R  
 ClientSampleId :



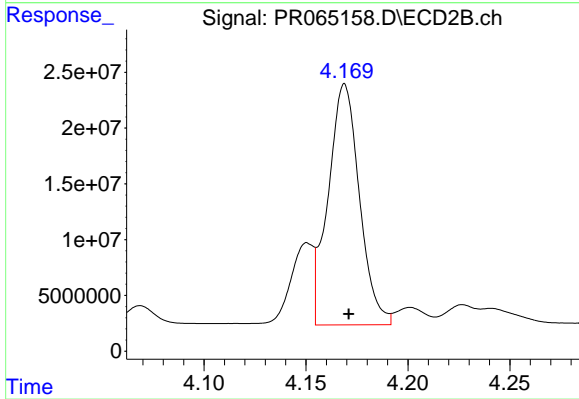
#3 AR-1016-1

R.T.: 4.151 min  
 Delta R.T.: -0.001 min  
 Response: 57114244  
 Conc: 293.83 ng/ml



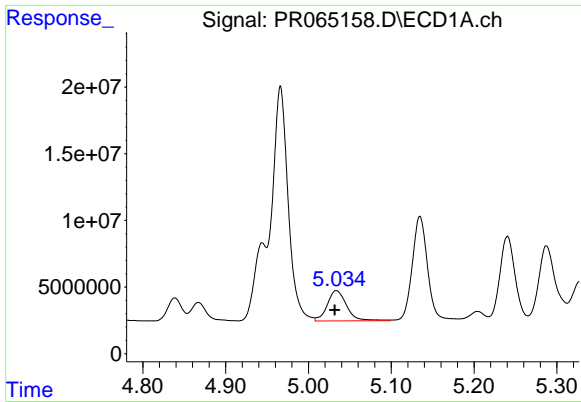
#4 AR-1016-2

R.T.: 4.966 min  
 Delta R.T.: 0.000 min  
 Response: 227413421  
 Conc: 806.82 ng/ml



#4 AR-1016-2

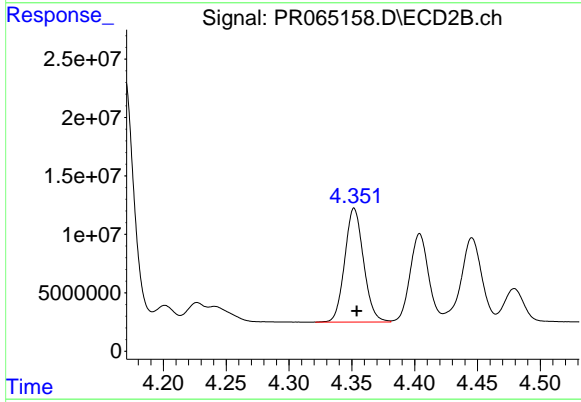
R.T.: 4.169 min  
 Delta R.T.: -0.002 min  
 Response: 230960583  
 Conc: 860.64 ng/ml



#5 AR-1016-3

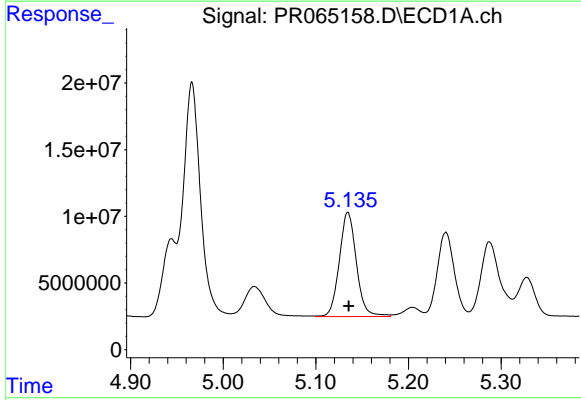
R.T.: 5.034 min  
 Delta R.T.: 0.002 min  
 Response: 37243360  
 Conc: 206.71 ng/ml

Instrument :  
 ECD\_R  
 ClientSampleId :



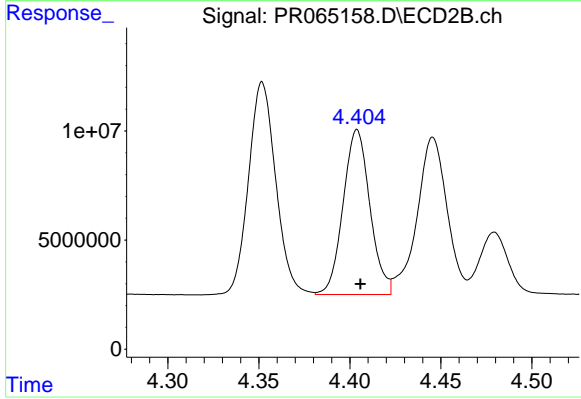
#5 AR-1016-3

R.T.: 4.352 min  
 Delta R.T.: -0.002 min  
 Response: 101649576  
 Conc: 697.67 ng/ml



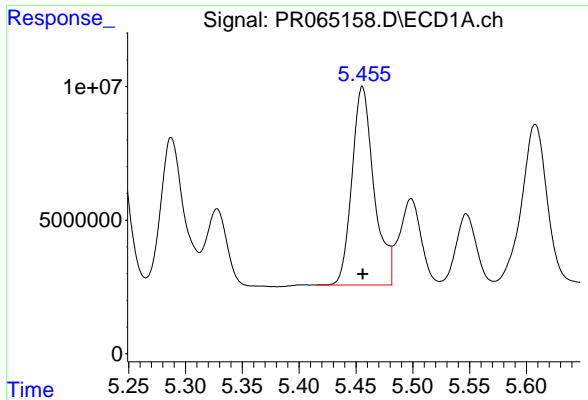
#6 AR-1016-4

R.T.: 5.135 min  
 Delta R.T.: -0.001 min  
 Response: 100218738  
 Conc: 690.54 ng/ml



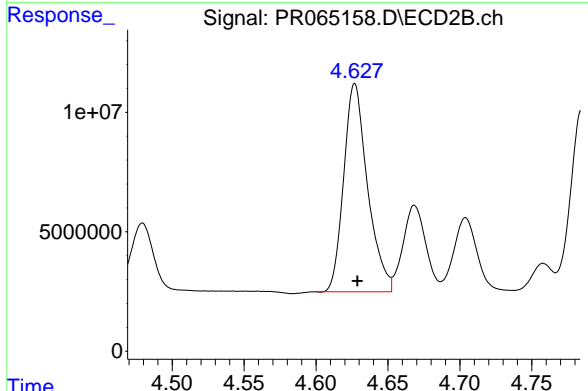
#6 AR-1016-4

R.T.: 4.404 min  
 Delta R.T.: -0.002 min  
 Response: 77477887  
 Conc: 683.11 ng/ml

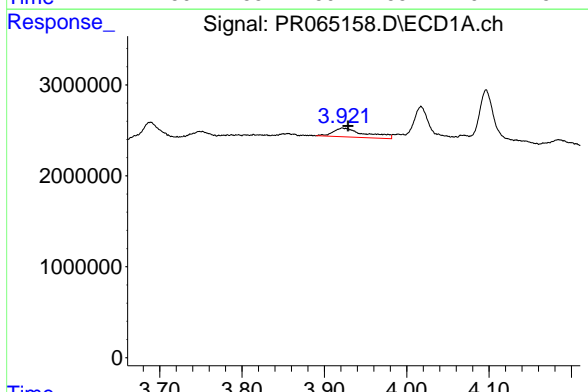


#7 AR-1016-5  
 R.T.: 5.456 min  
 Delta R.T.: 0.000 min  
 Response: 100162137  
 Conc: 679.47 ng/ml

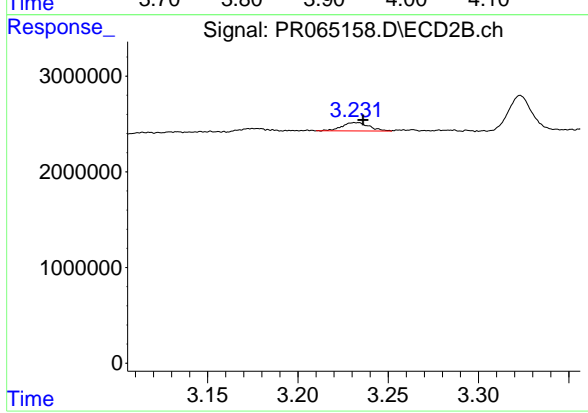
Instrument :  
 ECD\_R  
 ClientSampleId :



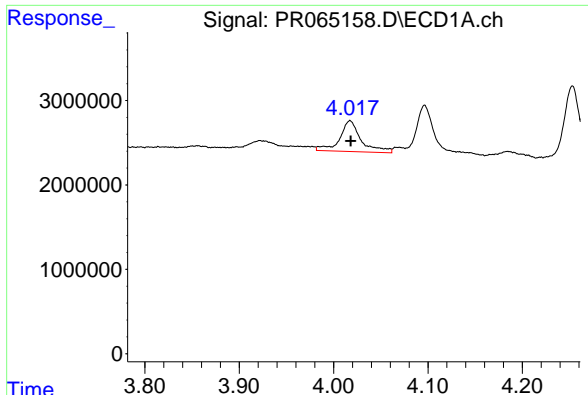
#7 AR-1016-5  
 R.T.: 4.627 min  
 Delta R.T.: -0.002 min  
 Response: 100907686  
 Conc: 674.26 ng/ml



#8 AR-1221-1  
 R.T.: 3.922 min  
 Delta R.T.: -0.007 min  
 Response: 2643844  
 Conc: 35.69 ng/ml



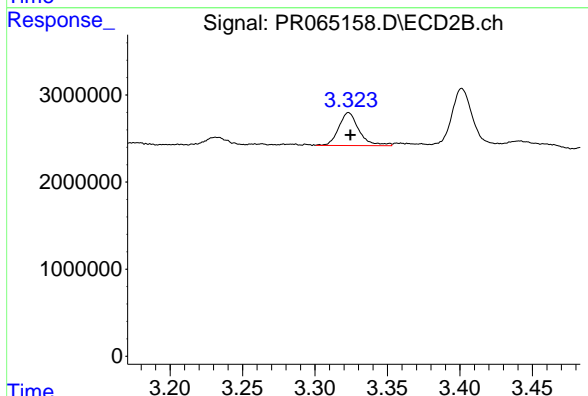
#8 AR-1221-1  
 R.T.: 3.232 min  
 Delta R.T.: -0.004 min  
 Response: 928082  
 Conc: 14.37 ng/ml



#9 AR-1221-2

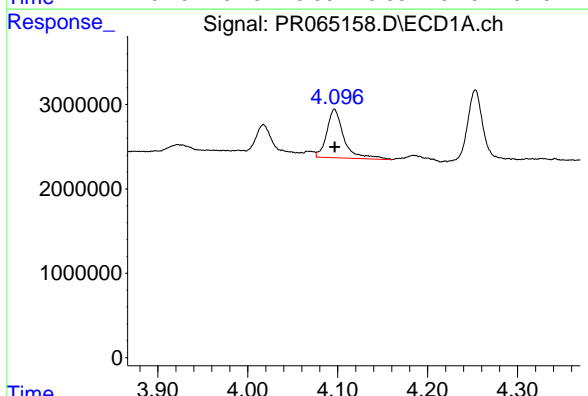
R.T.: 4.017 min  
 Delta R.T.: 0.000 min  
 Response: 5768947  
 Conc: 114.36 ng/ml

Instrument :  
 ECD\_R  
 ClientSampleId :



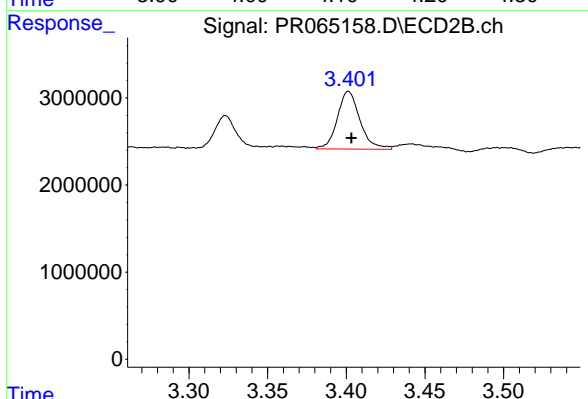
#9 AR-1221-2

R.T.: 3.323 min  
 Delta R.T.: -0.001 min  
 Response: 3685809  
 Conc: 81.58 ng/ml



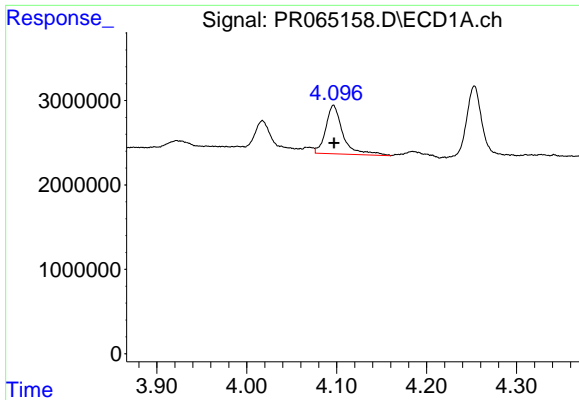
#10 AR-1221-3

R.T.: 4.096 min  
 Delta R.T.: 0.000 min  
 Response: 7651417  
 Conc: 46.98 ng/ml



#10 AR-1221-3

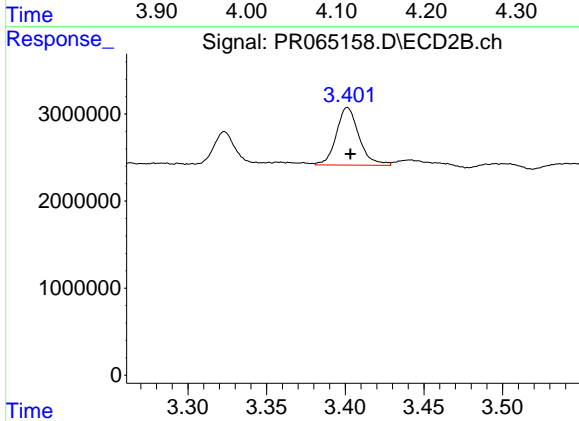
R.T.: 3.401 min  
 Delta R.T.: -0.002 min  
 Response: 6641913  
 Conc: 43.99 ng/ml



#11 AR-1232-1

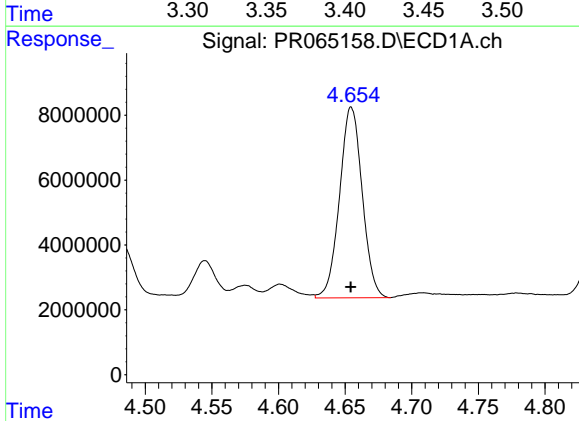
R.T.: 4.096 min  
 Delta R.T.: 0.000 min  
 Response: 7651417  
 Conc: 58.64 ng/ml

Instrument :  
 ECD\_R  
 ClientSampleId :



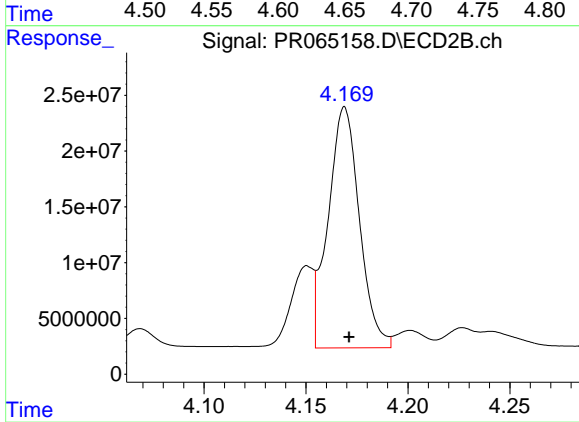
#11 AR-1232-1

R.T.: 3.401 min  
 Delta R.T.: -0.002 min  
 Response: 6641913  
 Conc: 55.51 ng/ml



#12 AR-1232-2

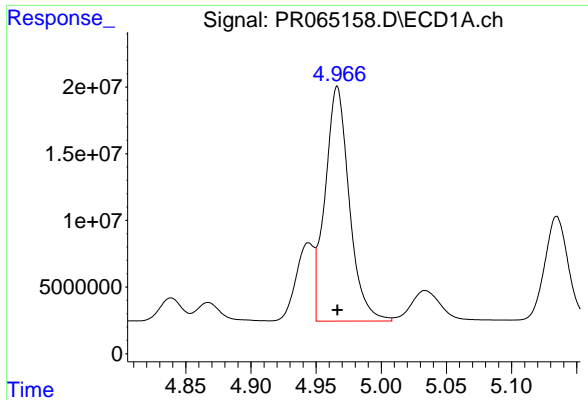
R.T.: 4.655 min  
 Delta R.T.: 0.000 min  
 Response: 69627683  
 Conc: 967.12 ng/ml



#12 AR-1232-2

R.T.: 4.169 min  
 Delta R.T.: -0.002 min  
 Response: 230960583  
 Conc: 1962.34 ng/ml

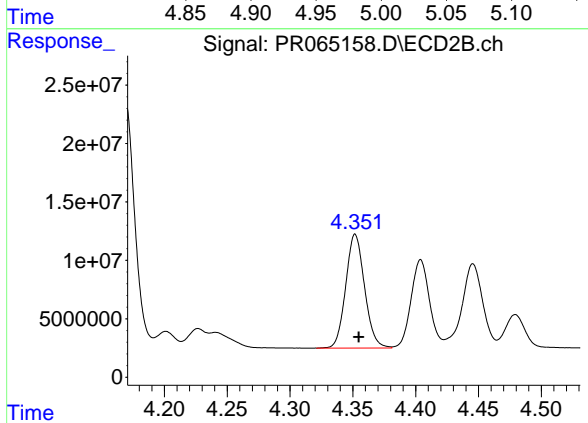




#13 AR-1232-3

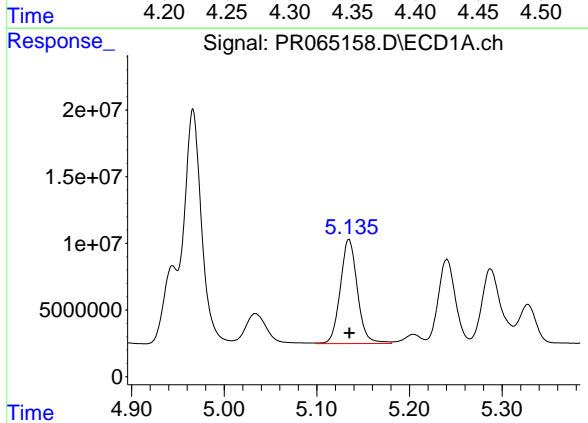
R.T.: 4.966 min  
 Delta R.T.: 0.000 min  
 Response: 227413421  
 Conc: 1800.64 ng/ml

Instrument :  
 ECD\_R  
 ClientSampleId :



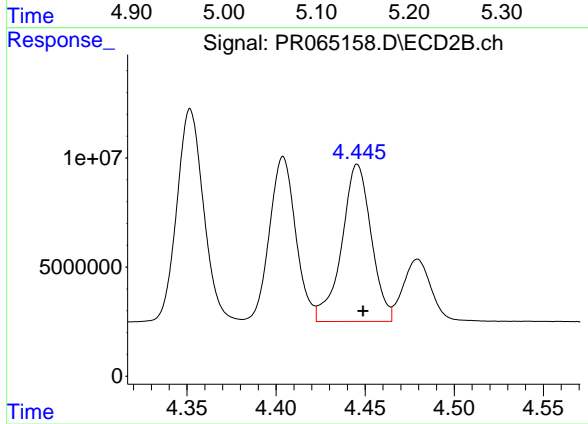
#13 AR-1232-3

R.T.: 4.352 min  
 Delta R.T.: -0.003 min  
 Response: 101649576  
 Conc: 1629.43 ng/ml



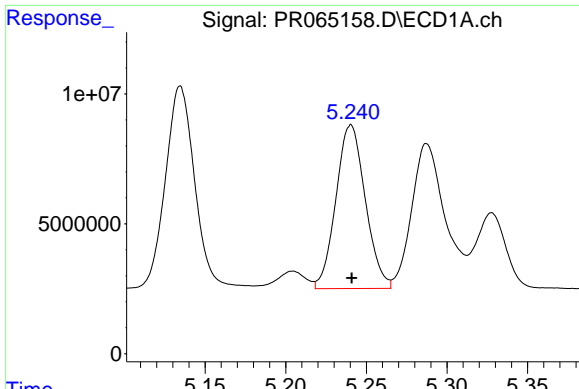
#14 AR-1232-4

R.T.: 5.135 min  
 Delta R.T.: 0.000 min  
 Response: 100218738  
 Conc: 1543.13 ng/ml



#14 AR-1232-4

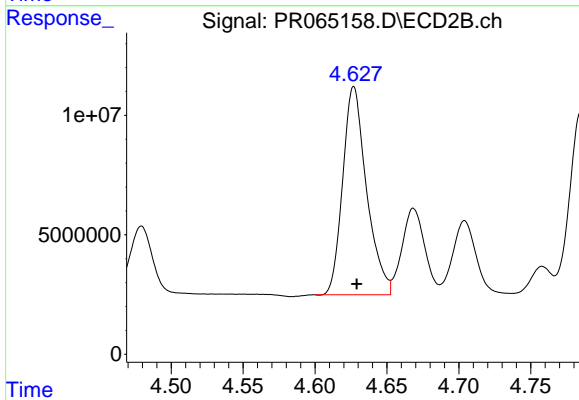
R.T.: 4.446 min  
 Delta R.T.: -0.003 min  
 Response: 82964038  
 Conc: 1515.05 ng/ml



#15 AR-1232-5

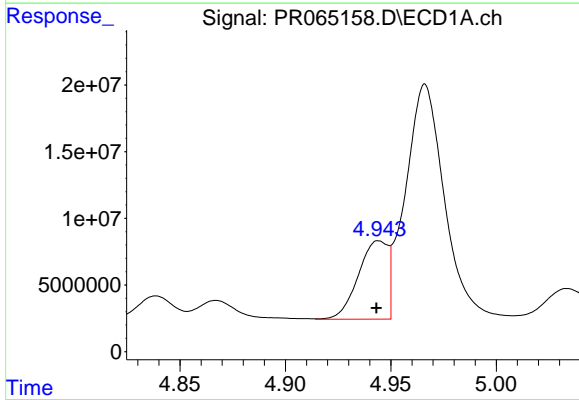
R.T.: 5.240 min  
 Delta R.T.: 0.000 min  
 Response: 79834153  
 Conc: 1678.00 ng/ml

Instrument :  
 ECD\_R  
 ClientSampleId :



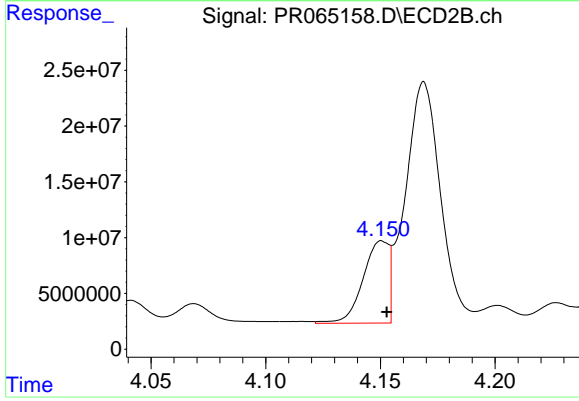
#15 AR-1232-5

R.T.: 4.627 min  
 Delta R.T.: -0.002 min  
 Response: 100907686  
 Conc: 1693.30 ng/ml



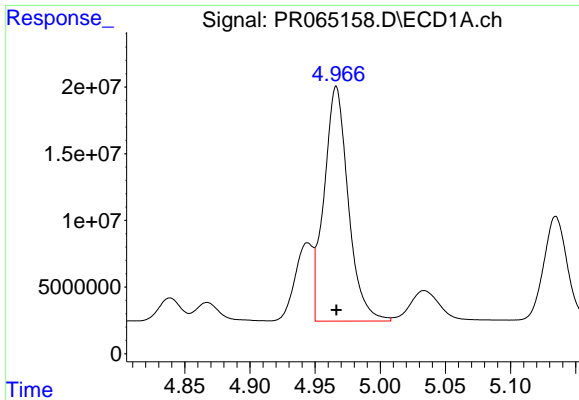
#16 AR-1242-1

R.T.: 4.944 min  
 Delta R.T.: 0.001 min  
 Response: 57485792  
 Conc: 376.66 ng/ml



#16 AR-1242-1

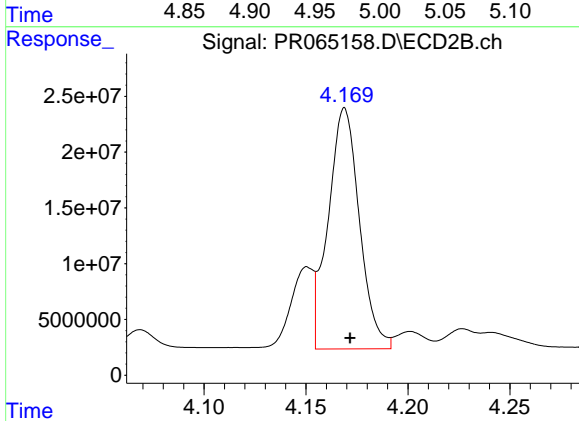
R.T.: 4.151 min  
 Delta R.T.: -0.002 min  
 Response: 57114244  
 Conc: 366.79 ng/ml



#17 AR-1242-2

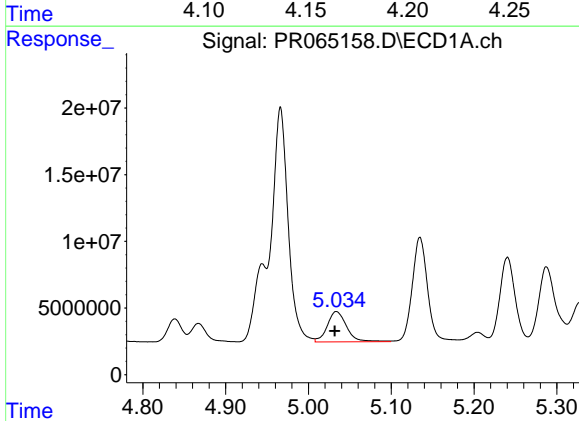
R.T.: 4.966 min  
 Delta R.T.: 0.000 min  
 Response: 227413421  
 Conc: 1014.88 ng/m

Instrument :  
 ECD\_R  
 ClientSampleId :



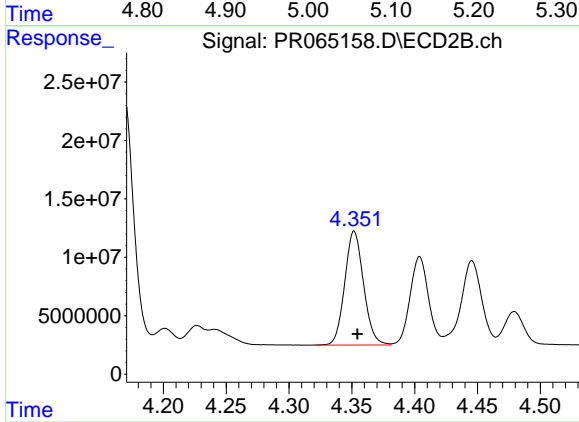
#17 AR-1242-2

R.T.: 4.169 min  
 Delta R.T.: -0.003 min  
 Response: 230960583  
 Conc: 1088.86 ng/ml



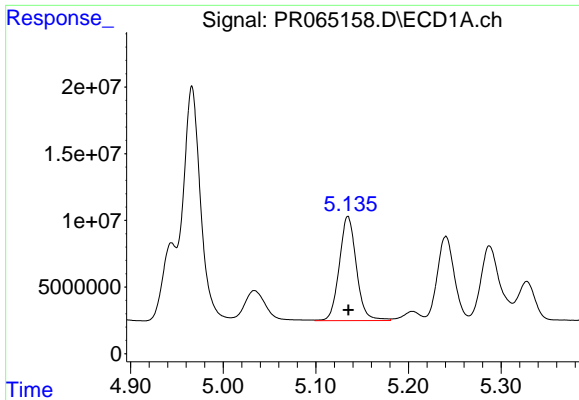
#18 AR-1242-3

R.T.: 5.034 min  
 Delta R.T.: 0.002 min  
 Response: 37243360  
 Conc: 261.12 ng/ml



#18 AR-1242-3

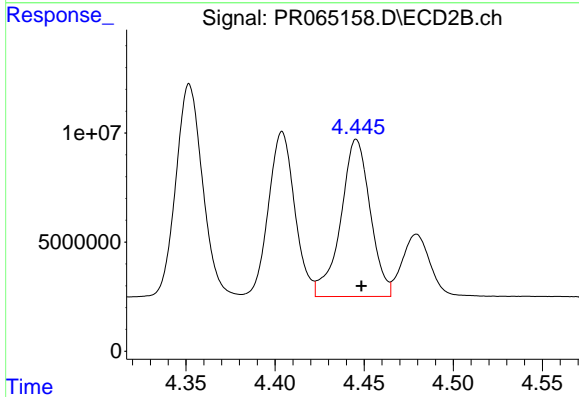
R.T.: 4.352 min  
 Delta R.T.: -0.003 min  
 Response: 101649576  
 Conc: 878.35 ng/ml



#19 AR-1242-4

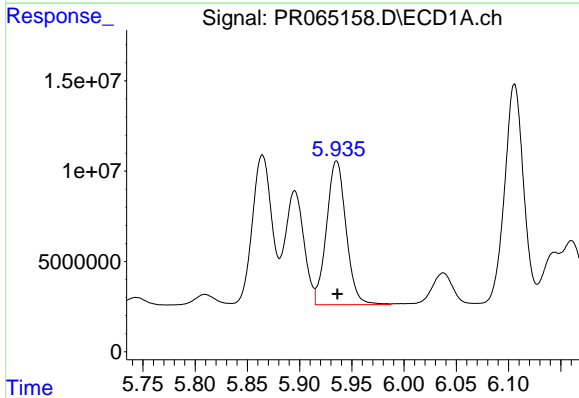
R.T.: 5.135 min  
 Delta R.T.: 0.000 min  
 Response: 100218738  
 Conc: 880.65 ng/ml

Instrument :  
 ECD\_R  
 ClientSampleId :



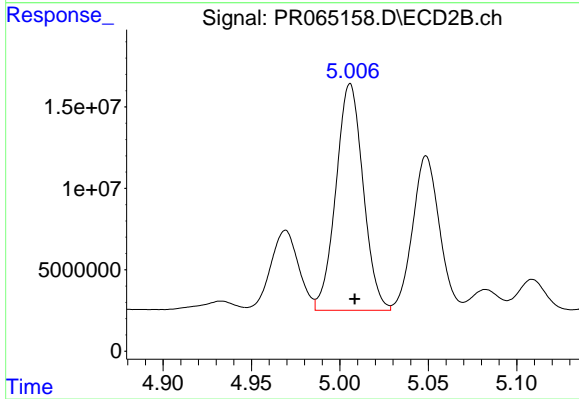
#19 AR-1242-4

R.T.: 4.446 min  
 Delta R.T.: -0.003 min  
 Response: 82964038  
 Conc: 740.71 ng/ml



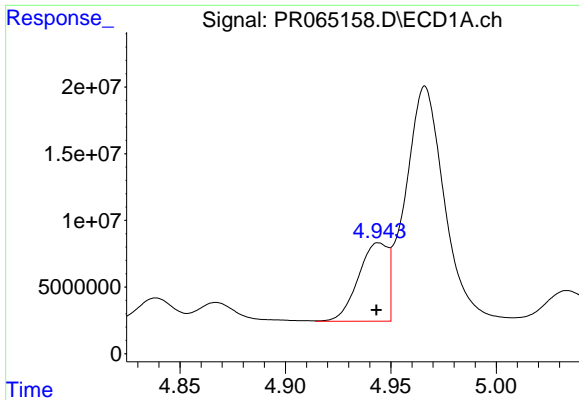
#20 AR-1242-5

R.T.: 5.935 min  
 Delta R.T.: 0.000 min  
 Response: 103819522  
 Conc: 852.43 ng/ml



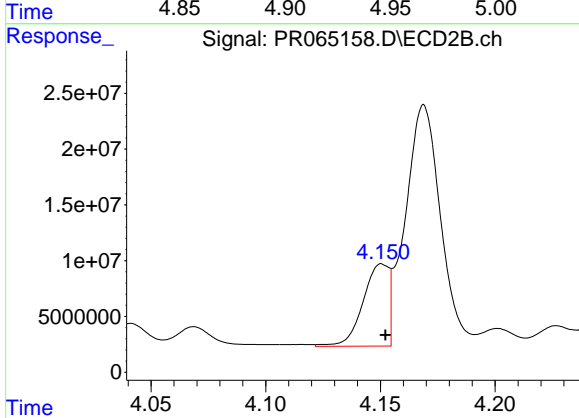
#20 AR-1242-5

R.T.: 5.006 min  
 Delta R.T.: -0.003 min  
 Response: 149330264  
 Conc: 1045.64 ng/ml

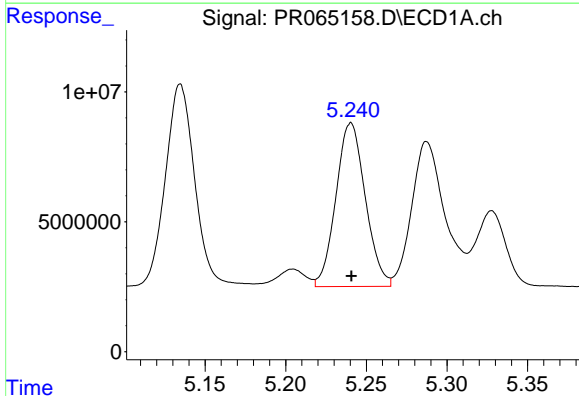


#21 AR-1248-1  
 R.T.: 4.944 min  
 Delta R.T.: 0.001 min  
 Response: 57485792  
 Conc: 490.83 ng/ml

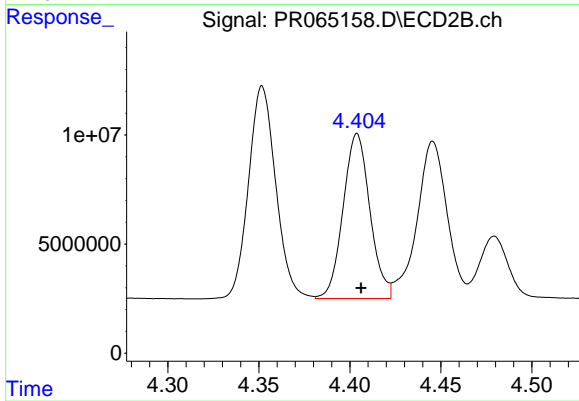
Instrument :  
 ECD\_R  
 ClientSampleId :



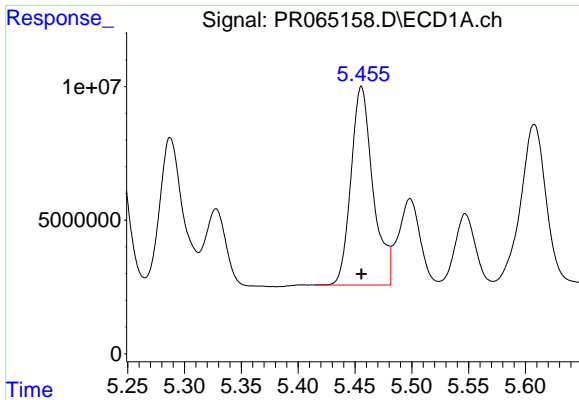
#21 AR-1248-1  
 R.T.: 4.151 min  
 Delta R.T.: -0.001 min  
 Response: 57114244  
 Conc: 484.49 ng/ml



#22 AR-1248-2  
 R.T.: 5.240 min  
 Delta R.T.: 0.000 min  
 Response: 79834153  
 Conc: 473.80 ng/ml



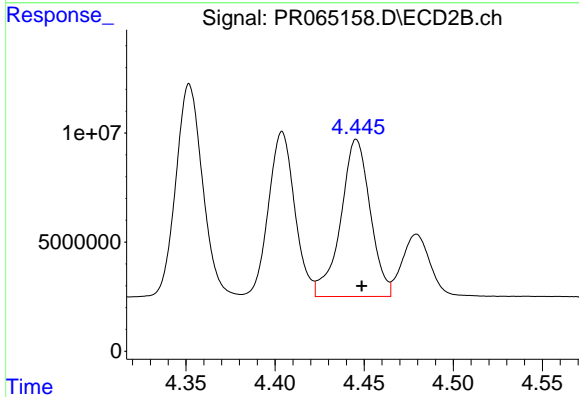
#22 AR-1248-2  
 R.T.: 4.404 min  
 Delta R.T.: -0.002 min  
 Response: 77477887  
 Conc: 472.44 ng/ml



#23 AR-1248-3

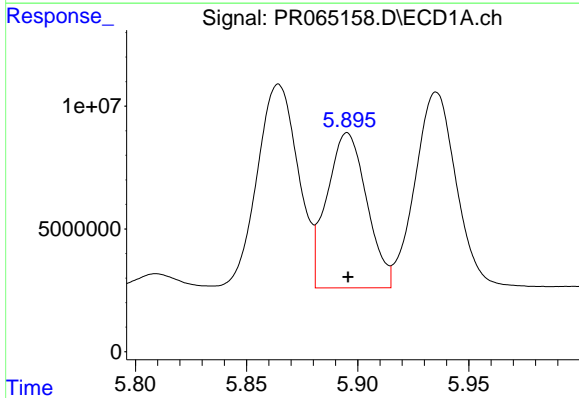
R.T.: 5.456 min  
 Delta R.T.: 0.000 min  
 Response: 100162137  
 Conc: 506.35 ng/ml

Instrument :  
 ECD\_R  
 ClientSampleId :



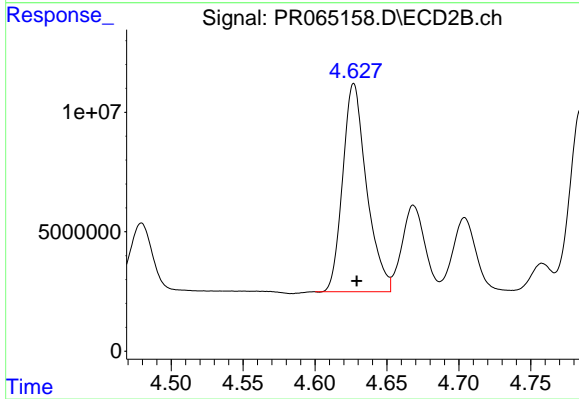
#23 AR-1248-3

R.T.: 4.446 min  
 Delta R.T.: -0.003 min  
 Response: 82964038  
 Conc: 491.06 ng/ml



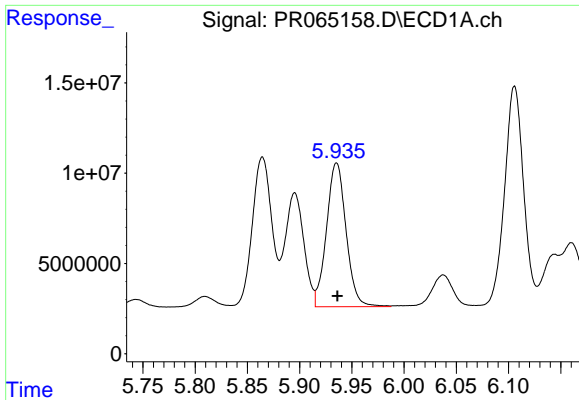
#24 AR-1248-4

R.T.: 5.895 min  
 Delta R.T.: 0.000 min  
 Response: 78656887  
 Conc: 375.53 ng/ml



#24 AR-1248-4

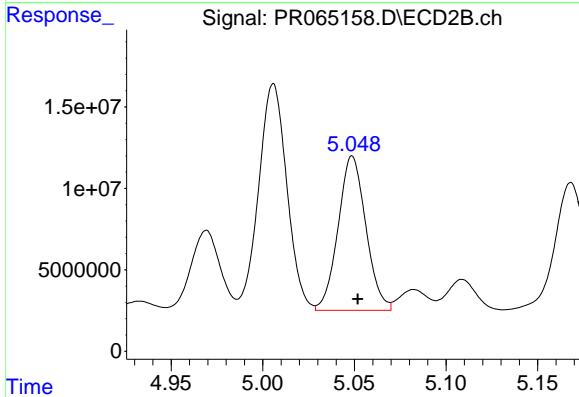
R.T.: 4.627 min  
 Delta R.T.: -0.002 min  
 Response: 100907686  
 Conc: 494.93 ng/ml



#25 AR-1248-5

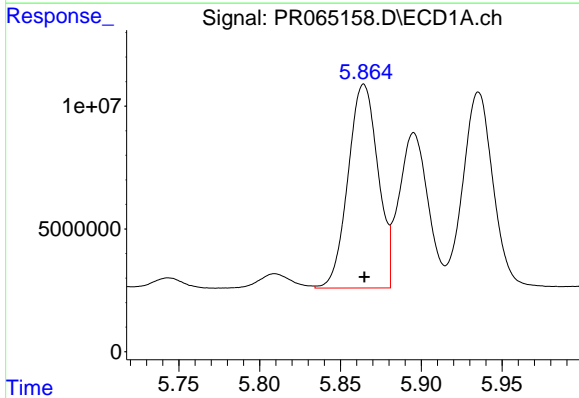
R.T.: 5.935 min  
 Delta R.T.: 0.000 min  
 Response: 103819522  
 Conc: 494.76 ng/ml

Instrument :  
 ECD\_R  
 ClientSampleId :



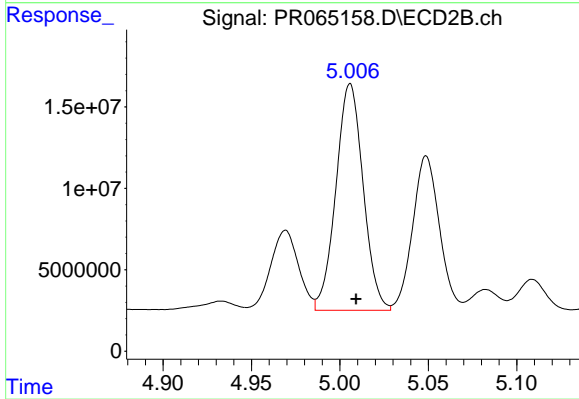
#25 AR-1248-5

R.T.: 5.049 min  
 Delta R.T.: -0.003 min  
 Response: 99859938  
 Conc: 497.16 ng/ml



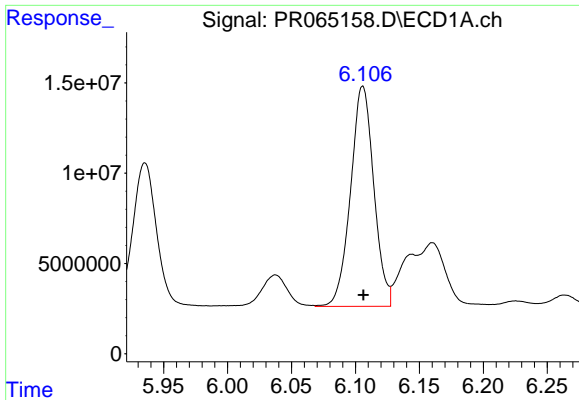
#26 AR-1254-1

R.T.: 5.864 min  
 Delta R.T.: 0.000 min  
 Response: 106918317  
 Conc: 488.75 ng/ml



#26 AR-1254-1

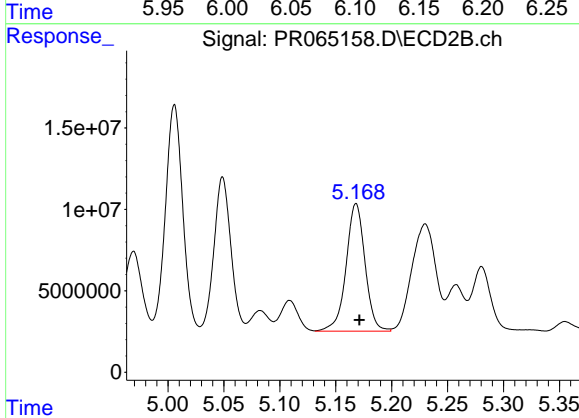
R.T.: 5.006 min  
 Delta R.T.: -0.003 min  
 Response: 149330264  
 Conc: 482.78 ng/ml



#27 AR-1254-2

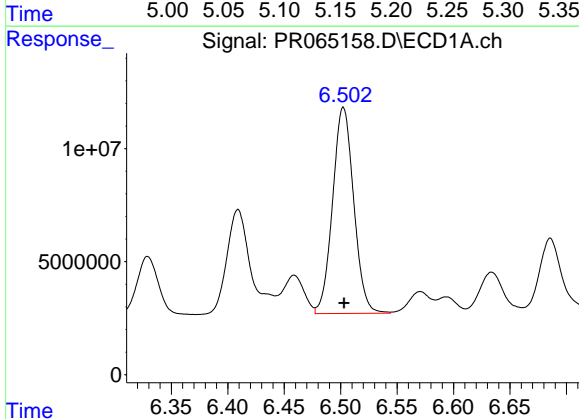
R.T.: 6.106 min  
 Delta R.T.: 0.000 min  
 Response: 154352184  
 Conc: 469.21 ng/ml

Instrument :  
 ECD\_R  
 ClientSampleId :



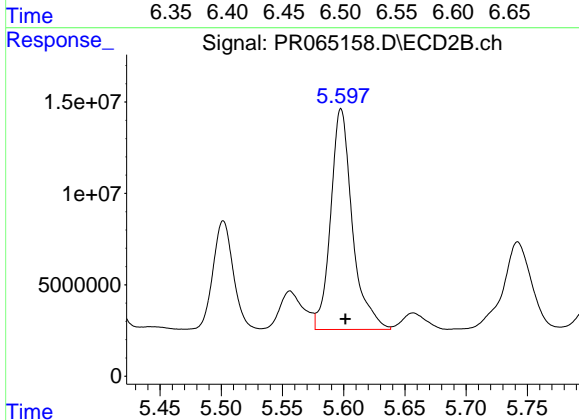
#27 AR-1254-2

R.T.: 5.168 min  
 Delta R.T.: -0.003 min  
 Response: 92703318  
 Conc: 346.54 ng/ml



#28 AR-1254-3

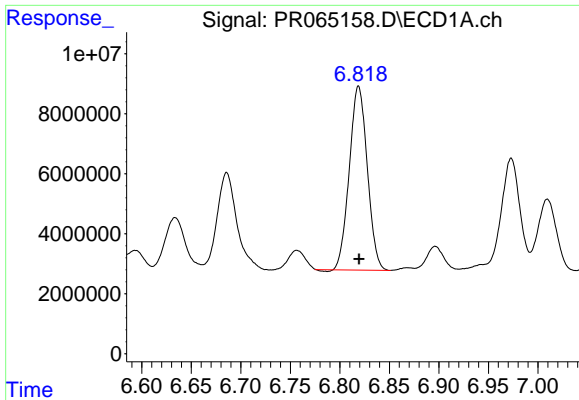
R.T.: 6.502 min  
 Delta R.T.: 0.000 min  
 Response: 118979937  
 Conc: 355.80 ng/ml



#28 AR-1254-3

R.T.: 5.598 min  
 Delta R.T.: -0.004 min  
 Response: 149270277  
 Conc: 346.32 ng/ml

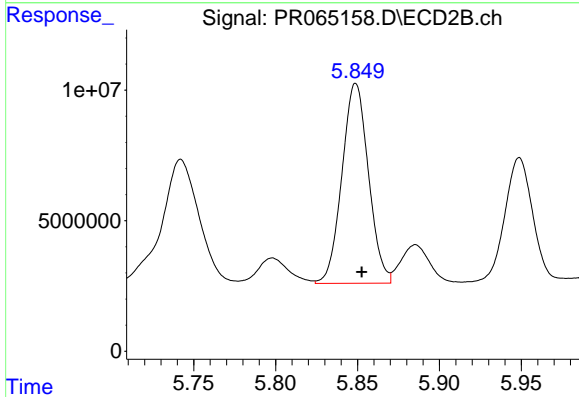




#29 AR-1254-4

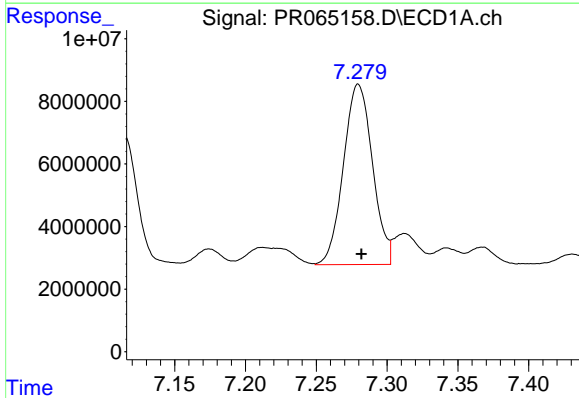
R.T.: 6.819 min  
 Delta R.T.: 0.000 min  
 Response: 77491595  
 Conc: 338.64 ng/ml

Instrument :  
 ECD\_R  
 ClientSampleId :



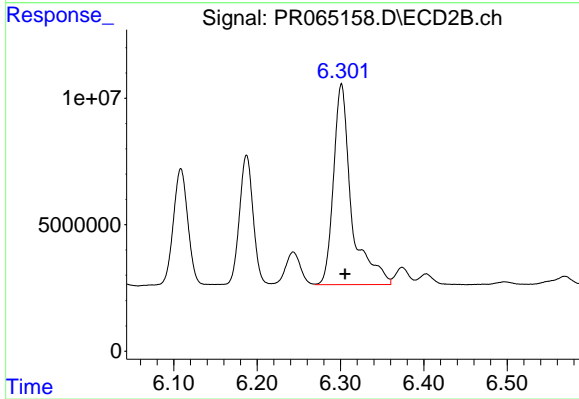
#29 AR-1254-4

R.T.: 5.849 min  
 Delta R.T.: -0.004 min  
 Response: 86279191  
 Conc: 320.99 ng/ml



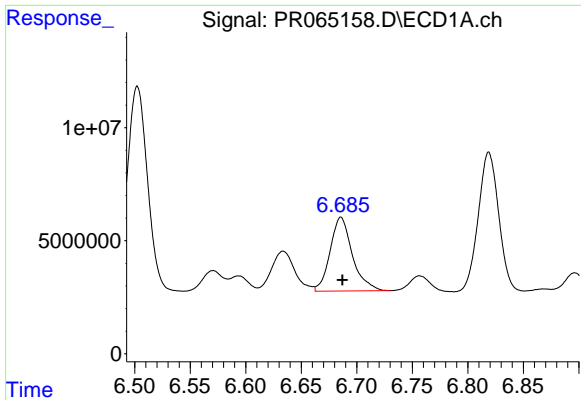
#30 AR-1254-5

R.T.: 7.280 min  
 Delta R.T.: -0.002 min  
 Response: 82363844  
 Conc: 316.23 ng/ml



#30 AR-1254-5

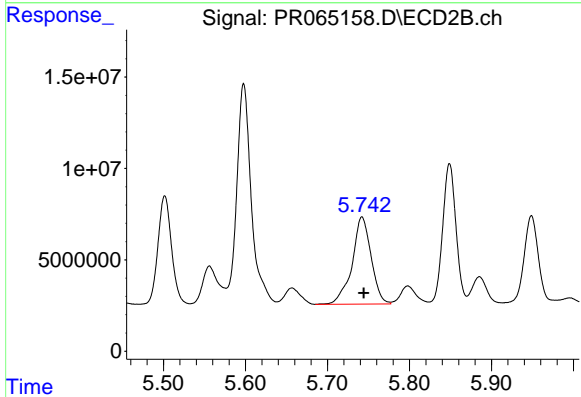
R.T.: 6.301 min  
 Delta R.T.: -0.004 min  
 Response: 119545906  
 Conc: 311.04 ng/ml



#31 AR-1260-1

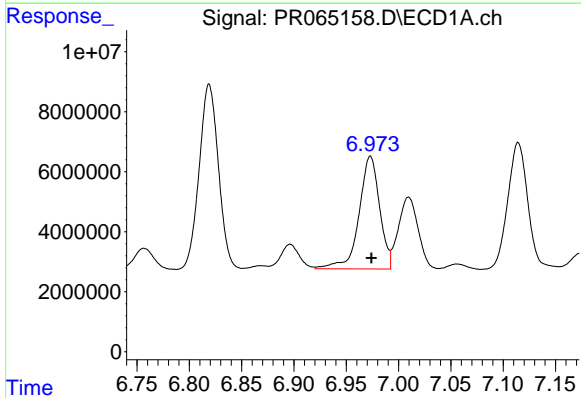
R.T.: 6.686 min  
 Delta R.T.: -0.001 min  
 Response: 45511317  
 Conc: 168.09 ng/ml

Instrument :  
 ECD\_R  
 ClientSampleId :



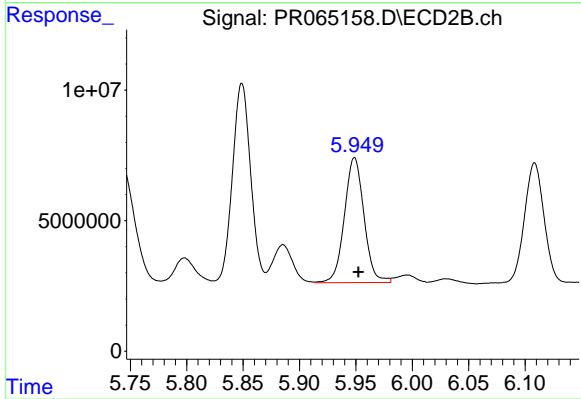
#31 AR-1260-1

R.T.: 5.742 min  
 Delta R.T.: -0.002 min  
 Response: 77052192  
 Conc: 251.50 ng/ml



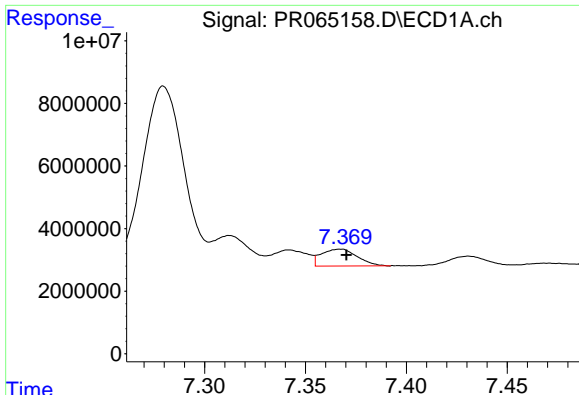
#32 AR-1260-2

R.T.: 6.973 min  
 Delta R.T.: 0.000 min  
 Response: 51488772  
 Conc: 167.19 ng/ml



#32 AR-1260-2

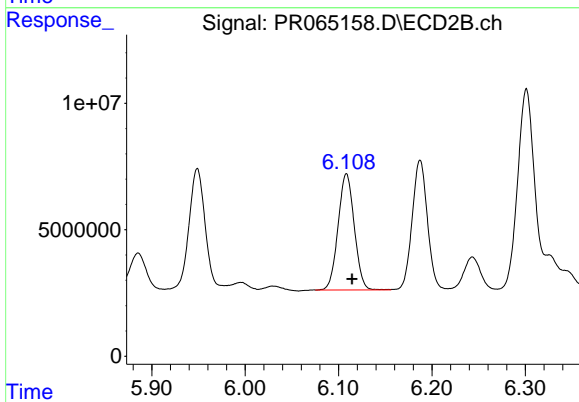
R.T.: 5.949 min  
 Delta R.T.: -0.004 min  
 Response: 57994955  
 Conc: 157.99 ng/ml



#33 AR-1260-3

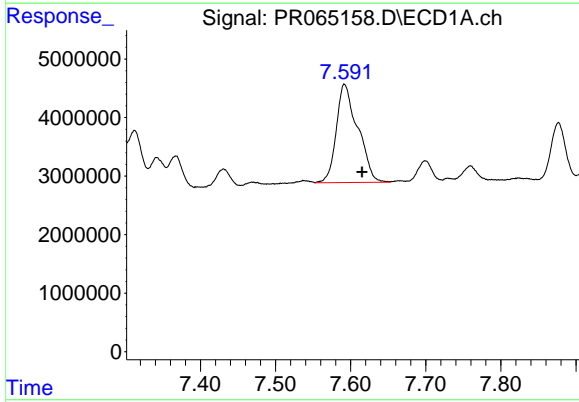
R.T.: 7.367 min  
 Delta R.T.: -0.003 min  
 Response: 6686175  
 Conc: 29.11 ng/ml

Instrument :  
 ECD\_R  
 ClientSampleId :



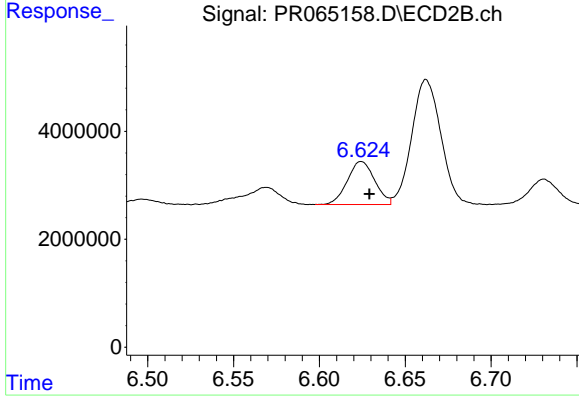
#33 AR-1260-3

R.T.: 6.109 min  
 Delta R.T.: -0.006 min  
 Response: 55389731  
 Conc: 160.21 ng/ml



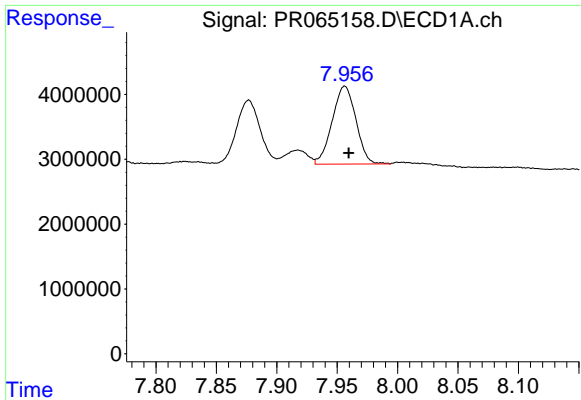
#34 AR-1260-4

R.T.: 7.592 min  
 Delta R.T.: -0.024 min  
 Response: 33382793  
 Conc: 131.56 ng/ml



#34 AR-1260-4

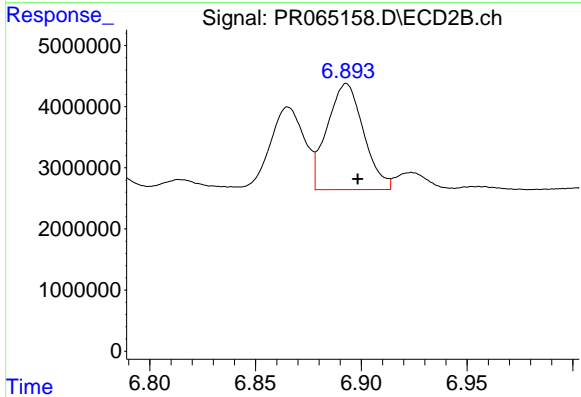
R.T.: 6.624 min  
 Delta R.T.: -0.005 min  
 Response: 8855691  
 Conc: 30.98 ng/ml



#35 AR-1260-5

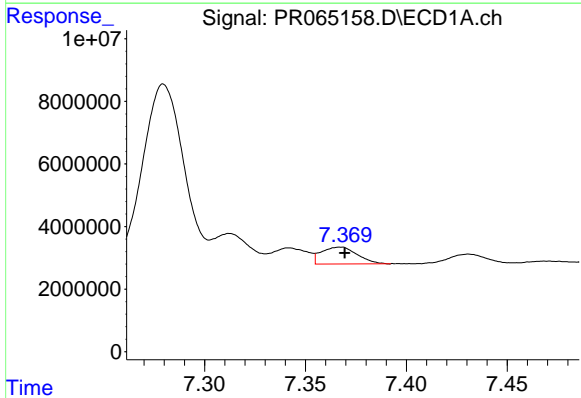
R.T.: 7.956 min  
 Delta R.T.: -0.003 min  
 Response: 16453910  
 Conc: 34.89 ng/ml

Instrument :  
 ECD\_R  
 ClientSampleId :



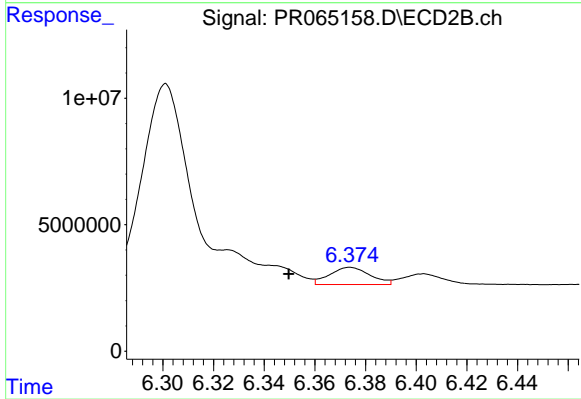
#35 AR-1260-5

R.T.: 6.893 min  
 Delta R.T.: -0.005 min  
 Response: 20776369  
 Conc: 31.09 ng/ml



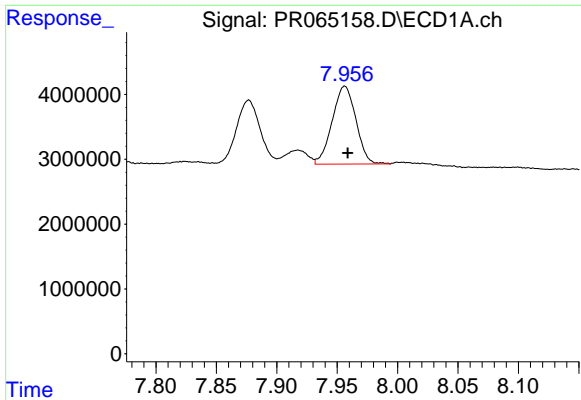
#36 AR-1262-1

R.T.: 7.367 min  
 Delta R.T.: -0.002 min  
 Response: 6686175  
 Conc: 21.33 ng/ml



#36 AR-1262-1

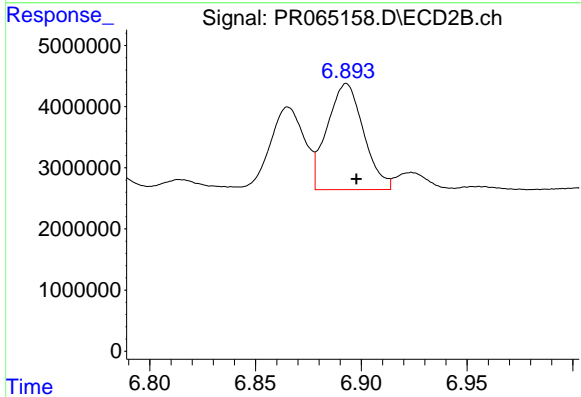
R.T.: 6.374 min  
 Delta R.T.: 0.024 min  
 Response: 7554633  
 Conc: 19.13 ng/ml



#37 AR-1262-2

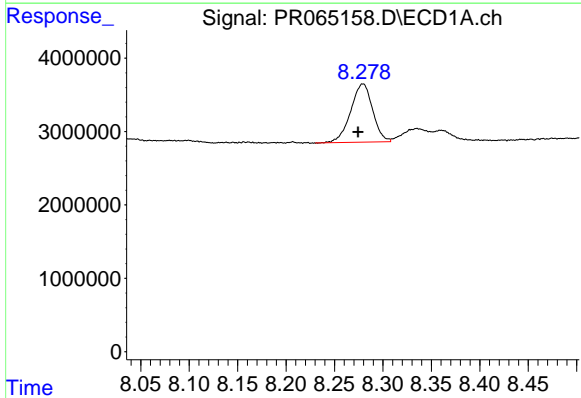
R.T.: 7.956 min  
 Delta R.T.: -0.002 min  
 Response: 16453910  
 Conc: 31.99 ng/ml

Instrument :  
 ECD\_R  
 ClientSampleId :



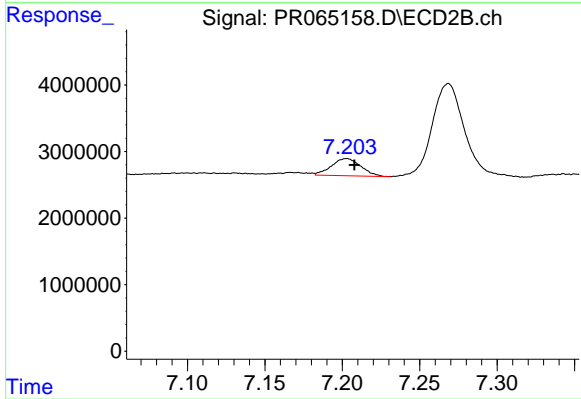
#37 AR-1262-2

R.T.: 6.893 min  
 Delta R.T.: -0.005 min  
 Response: 20776369  
 Conc: 29.08 ng/ml



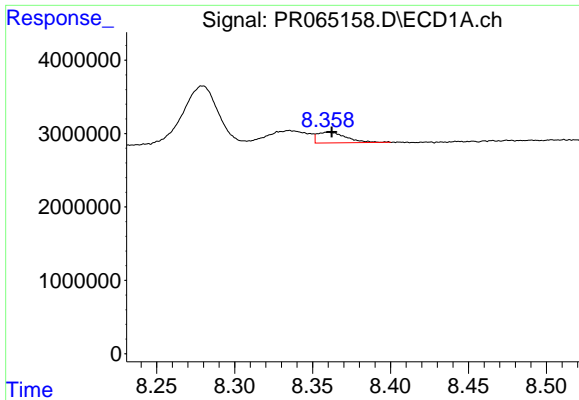
#38 AR-1262-3

R.T.: 8.279 min  
 Delta R.T.: 0.005 min  
 Response: 12527153  
 Conc: 36.15 ng/ml



#38 AR-1262-3

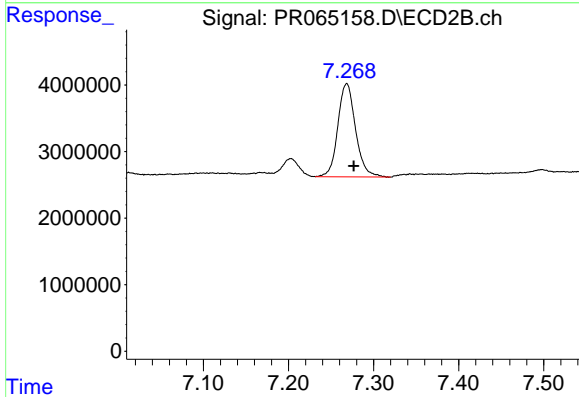
R.T.: 7.203 min  
 Delta R.T.: -0.005 min  
 Response: 3400019  
 Conc: 12.48 ng/ml



#39 AR-1262-4

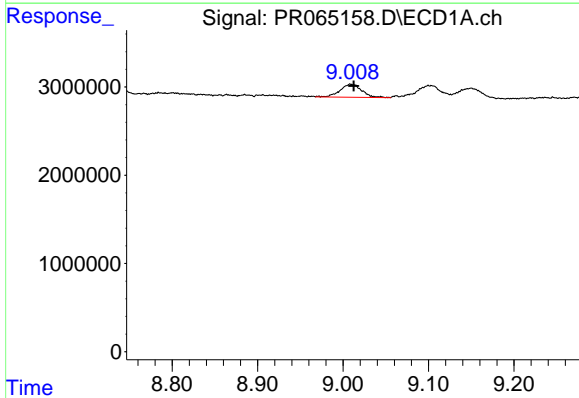
R.T.: 8.360 min  
 Delta R.T.: -0.002 min  
 Response: 1888031  
 Conc: 7.17 ng/ml

Instrument :  
 ECD\_R  
 ClientSampleId :



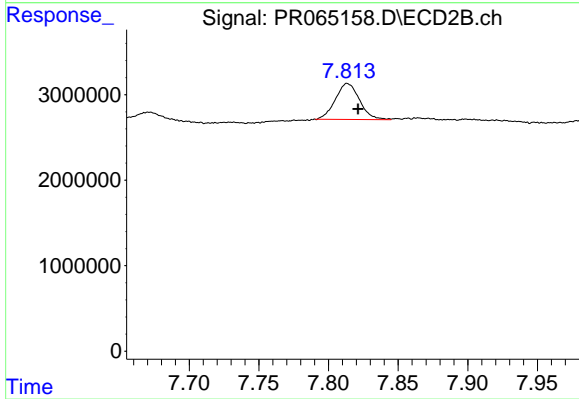
#39 AR-1262-4

R.T.: 7.269 min  
 Delta R.T.: -0.008 min  
 Response: 20271348  
 Conc: 38.84 ng/ml



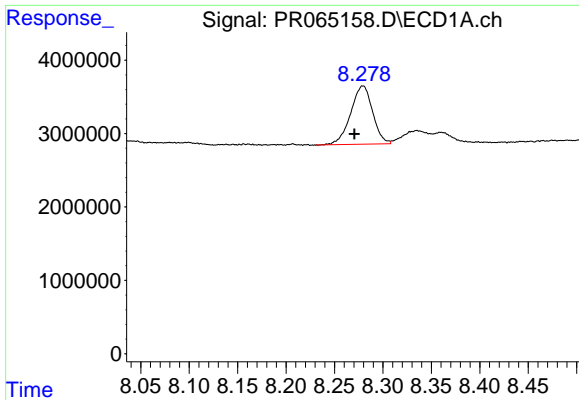
#40 AR-1262-5

R.T.: 9.009 min  
 Delta R.T.: -0.004 min  
 Response: 2587044  
 Conc: 14.20 ng/ml



#40 AR-1262-5

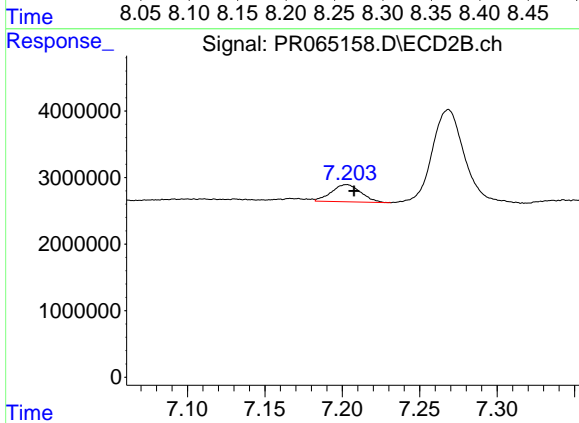
R.T.: 7.814 min  
 Delta R.T.: -0.008 min  
 Response: 5093016  
 Conc: 21.52 ng/ml



#41 AR-1268-1

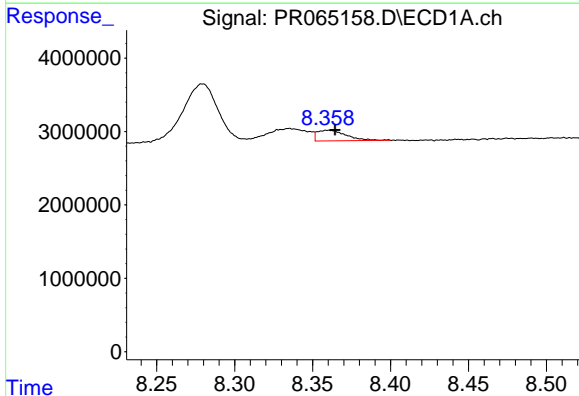
R.T.: 8.279 min  
 Delta R.T.: 0.009 min  
 Response: 12527153  
 Conc: 19.91 ng/ml

Instrument :  
 ECD\_R  
 ClientSampleId :



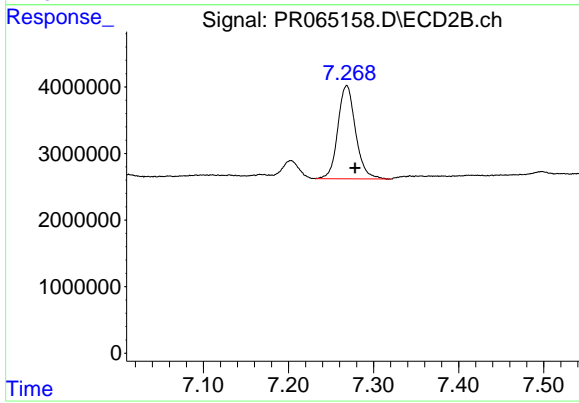
#41 AR-1268-1

R.T.: 7.203 min  
 Delta R.T.: -0.005 min  
 Response: 3400019  
 Conc: 4.09 ng/ml



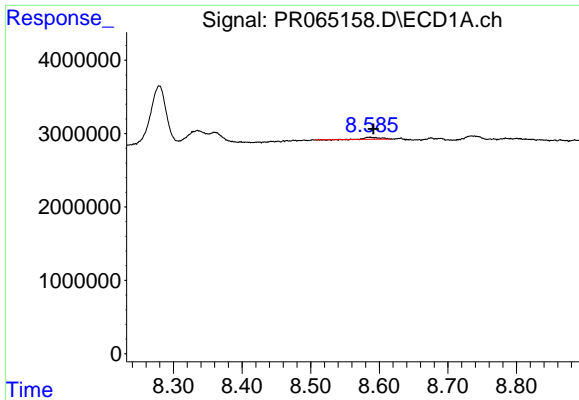
#42 AR-1268-2

R.T.: 8.360 min  
 Delta R.T.: -0.004 min  
 Response: 1888031  
 Conc: 3.34 ng/ml



#42 AR-1268-2

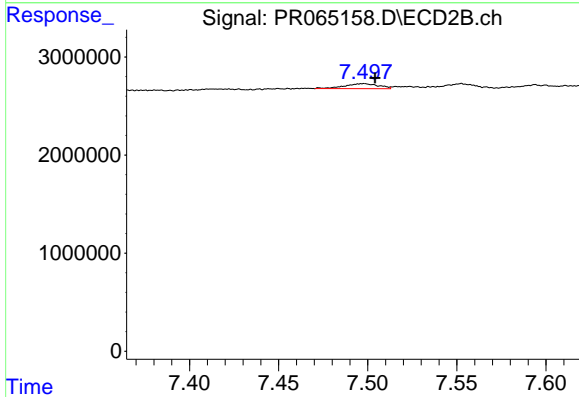
R.T.: 7.269 min  
 Delta R.T.: -0.010 min  
 Response: 20271348  
 Conc: 26.05 ng/ml



#43 AR-1268-3

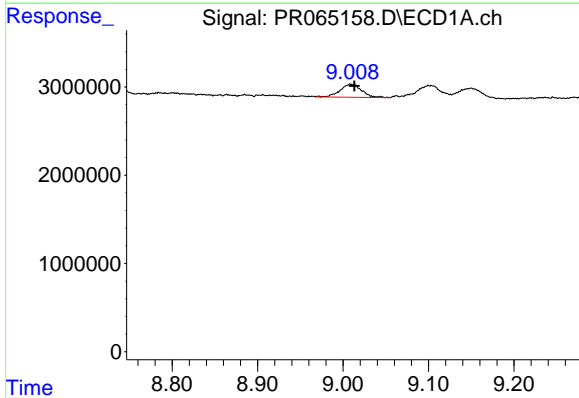
R.T.: 8.586 min  
 Delta R.T.: -0.005 min  
 Response: 457299  
 Conc: 0.92 ng/ml

Instrument :  
 ECD\_R  
 ClientSampleId :



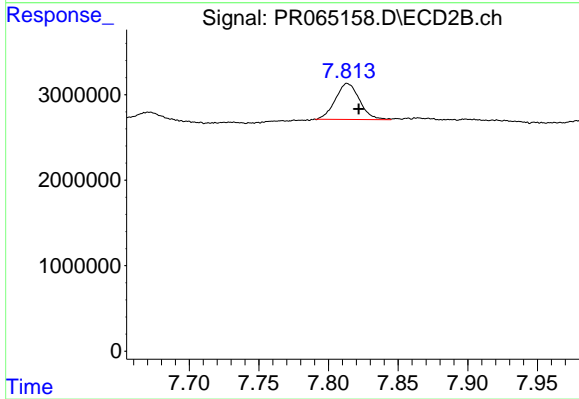
#43 AR-1268-3

R.T.: 7.498 min  
 Delta R.T.: -0.006 min  
 Response: 678645  
 Conc: 1.03 ng/ml



#44 AR-1268-4

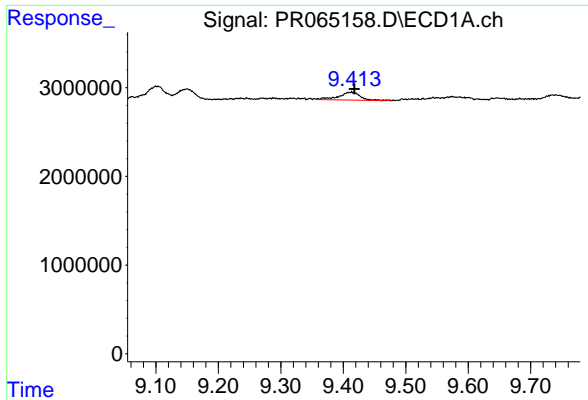
R.T.: 9.009 min  
 Delta R.T.: -0.005 min  
 Response: 2587044  
 Conc: 12.20 ng/ml



#44 AR-1268-4

R.T.: 7.814 min  
 Delta R.T.: -0.008 min  
 Response: 5093016  
 Conc: 18.40 ng/ml

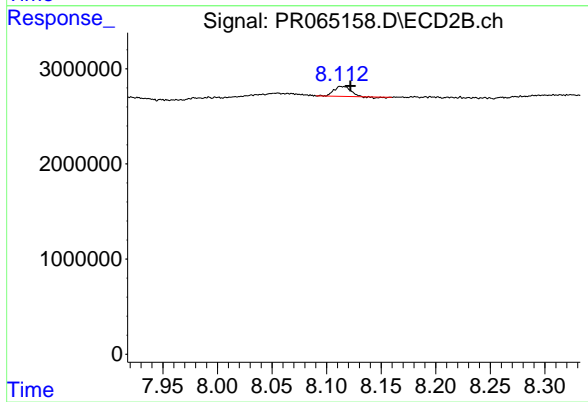




#45 AR-1268-5

R.T.: 9.413 min  
Delta R.T.: -0.005 min  
Response: 2161000  
Conc: 1.43 ng/ml

Instrument :  
ECD\_R  
ClientSampleId :



#45 AR-1268-5

R.T.: 8.114 min  
Delta R.T.: -0.008 min  
Response: 1037568  
Conc: 0.52 ng/ml