

Data Path : Z:\pestpcbsrv\HPCHEM1\ECD\_R\Data\PR012722\  
 Data File : PR053226.D  
 Signal(s) : Signal #1: ECD1A.ch Signal #2: ECD2B.ch  
 Acq On : 27 Jan 2022 23:08  
 Operator : AJ\MA  
 Sample : AR1660CCC400  
 Misc :  
 ALS Vial : 3 Sample Multiplier: 1

Instrument :  
 ECD\_R  
 ClientSampleId :

Integration File signal 1: autoint1.e  
 Integration File signal 2: autoint2.e  
 Quant Time: Jan 28 05:58:34 2022  
 Quant Method : Z:\pestpcbsrv\HPCHEM1\ECD\_R\Method\PR011022CLP.M  
 Quant Title : GC EXTRACTABLES  
 QLast Update : Tue Jan 11 05:43:53 2022  
 Response via : Initial Calibration  
 Integrator: ChemStation

Volume Inj. : 1 µl  
 Signal #1 Phase : ZB MR1 Signal #2 Phase: ZB MR2  
 Signal #1 Info : 30Mx0.32mmx 0.5µm Signal #2 Info : 30M x 0.32mm x 0.25µm

Compound	RT#1	RT#2	Resp#1	Resp#2	ng/ml	ng/ml
System Monitoring Compounds						
1) SA Tetrachlo...	4.672	3.842	71795194	64627578	21.955	20.448
2) SA Decachlor...	10.583	8.837	128.3E6	113.2E6	42.183	39.124
Target Compounds						
3) L1 AR-1016-1	5.856	4.919	46004364	44986258	424.415	442.646
4) L1 AR-1016-2	5.880	4.937	65661666	64315401	427.075	418.225
5) L1 AR-1016-3	5.944	5.113	40696153	34427036	422.261	425.232
6) L1 AR-1016-4	6.046	5.153	33895341	28441122	431.138	406.506
7) L1 AR-1016-5	6.338	5.365	34405355	35865895	426.084	405.723
8) L2 AR-1221-1	4.882	4.050	4725168	4142630	113.015	105.243
9) L2 AR-1221-2	4.975	4.137	6569924	5830438	221.920	203.471
10) L2 AR-1221-3	5.054	4.212	25813100	24476901	268.306	259.818
11) L3 AR-1232-1	5.054	4.212	25813100	24476901	334.086	326.668
12) L3 AR-1232-2	5.590	4.937	33759779	64315401	836.505	886.789
13) L3 AR-1232-3	5.880	5.113	65661666	34427036	898.299	910.292
14) L3 AR-1232-4	6.046	5.195	33895341	34488722	917.877	968.027
15) L3 AR-1232-5	6.128	5.365	30986469	35865895	1027.290	939.463
16) L4 AR-1242-1	5.856	4.919	46004364	44986258	465.883	494.731
17) L4 AR-1242-2	5.880	4.937	65661666	64315401	482.611	477.022
18) L4 AR-1242-3	5.944	5.113	40696153	34427036	467.998	477.276
19) L4 AR-1242-4	6.046	5.195	33895341	34488722	478.473	467.325
20) L4 AR-1242-5	6.782	5.714	5533701	25807732	73.300	299.225 #
21) L5 AR-1248-1	5.856	4.919	46004364	44986258	620.928	646.650
22) L5 AR-1248-2	6.128	5.153	30986469	28441122	287.471	282.625
23) L5 AR-1248-3	6.338	5.195	34405355	34488722	291.994	326.791
24) L5 AR-1248-4	6.742	5.365	6247257	35865895	48.029	290.472 #
25) L5 AR-1248-5	6.782	5.754	5533701	4391154	44.034	37.944
26) L6 AR-1254-1	6.715	5.714	23459094	25807732	180.464	148.934
27) L6 AR-1254-2	6.929	5.859	25209960	23247843	125.874	153.656
28) L6 AR-1254-3	7.305	6.275	14114467	54279244	68.565	221.216 #
29) L6 AR-1254-4	7.589	6.485	10448450	6768178	68.215	45.927 #
30) L6 AR-1254-5	8.008	6.899	79032986	76979837	465.635	359.457
31) L7 AR-1260-1	7.463	6.389	55584429	58966605	401.793	359.622
32) L7 AR-1260-2	7.717	6.575	66531411	70869081	400.347	358.448
33) L7 AR-1260-3	8.077	6.727	51610238	65842155	402.014	341.309
34) L7 AR-1260-4	8.319	7.196	59937645	54987906	405.839	339.523
35) L7 AR-1260-5	8.654	7.434	121.8E6	131.4E6	420.803	355.089
36) L8 AR-1262-1	8.077	6.899	51610238	76979837	244.082	647.447 #
37) L8 AR-1262-2	8.654	7.434	121.8E6	131.4E6	319.559	325.684
38) L8 AR-1262-3	8.981	7.717	29045357	30009652	168.967	183.781
39) L8 AR-1262-4	9.065	7.780	50623257	94935193	452.084	315.546 #
40) L8 AR-1262-5	9.785	8.277	38236358	35704377	258.690	249.264
41) L9 AR-1268-1	8.981	7.717	29045357	30009652	66.420	67.509

Data Path : Z:\pestpcbsrv\HPCHEM1\ECD\_R\Data\PR012722\  
 Data File : PR053226.D  
 Signal(s) : Signal #1: ECD1A.ch Signal #2: ECD2B.ch  
 Acq On : 27 Jan 2022 23:08  
 Operator : AJ\MA  
 Sample : AR1660CCC400  
 Misc :  
 ALS Vial : 3 Sample Multiplier: 1

Instrument :  
 ECD\_R  
 ClientSampleId :

Integration File signal 1: autoint1.e  
 Integration File signal 2: autoint2.e  
 Quant Time: Jan 28 05:58:34 2022  
 Quant Method : Z:\pestpcbsrv\HPCHEM1\ECD\_R\Method\PR011022CLP.M  
 Quant Title : GC EXTRACTABLES  
 QLast Update : Tue Jan 11 05:43:53 2022  
 Response via : Initial Calibration  
 Integrator: ChemStation

Volume Inj. : 1 µl  
 Signal #1 Phase : ZB MR1 Signal #2 Phase: ZB MR2  
 Signal #1 Info : 30Mx0.32mmx 0.5µm Signal #2 Info : 30M x 0.32mm x 0.25µm

	Compound	RT#1	RT#2	Resp#1	Resp#2	ng/ml	ng/ml
42)	L9 AR-1268-2	9.065	7.780	50623257	94935193	126.327	233.968 #
43)	L9 AR-1268-3	9.323	7.987	2601923	1926472	7.534	5.511 #
44)	L9 AR-1268-4	9.785	8.277	38236358	35704377	245.111	236.792
45)	L9 AR-1268-5	10.227	8.576	11937087	10241419	10.612	9.447

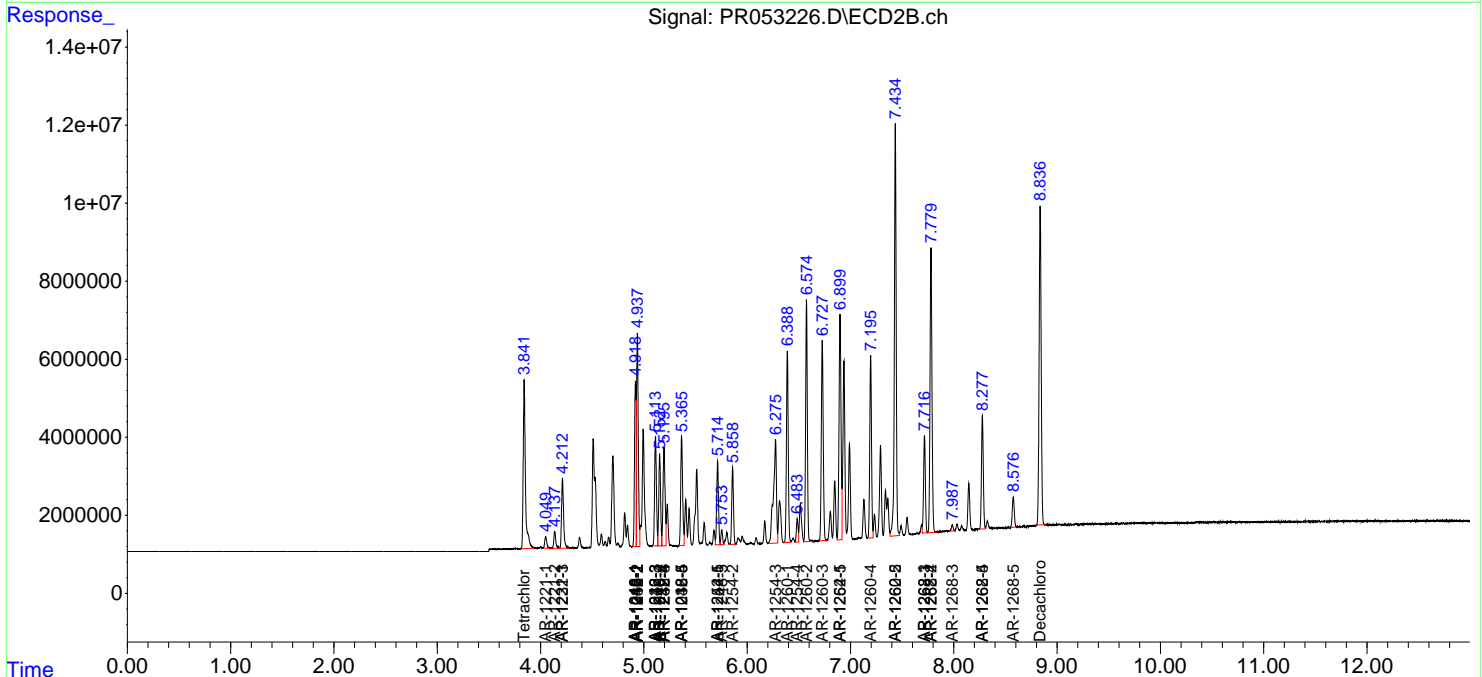
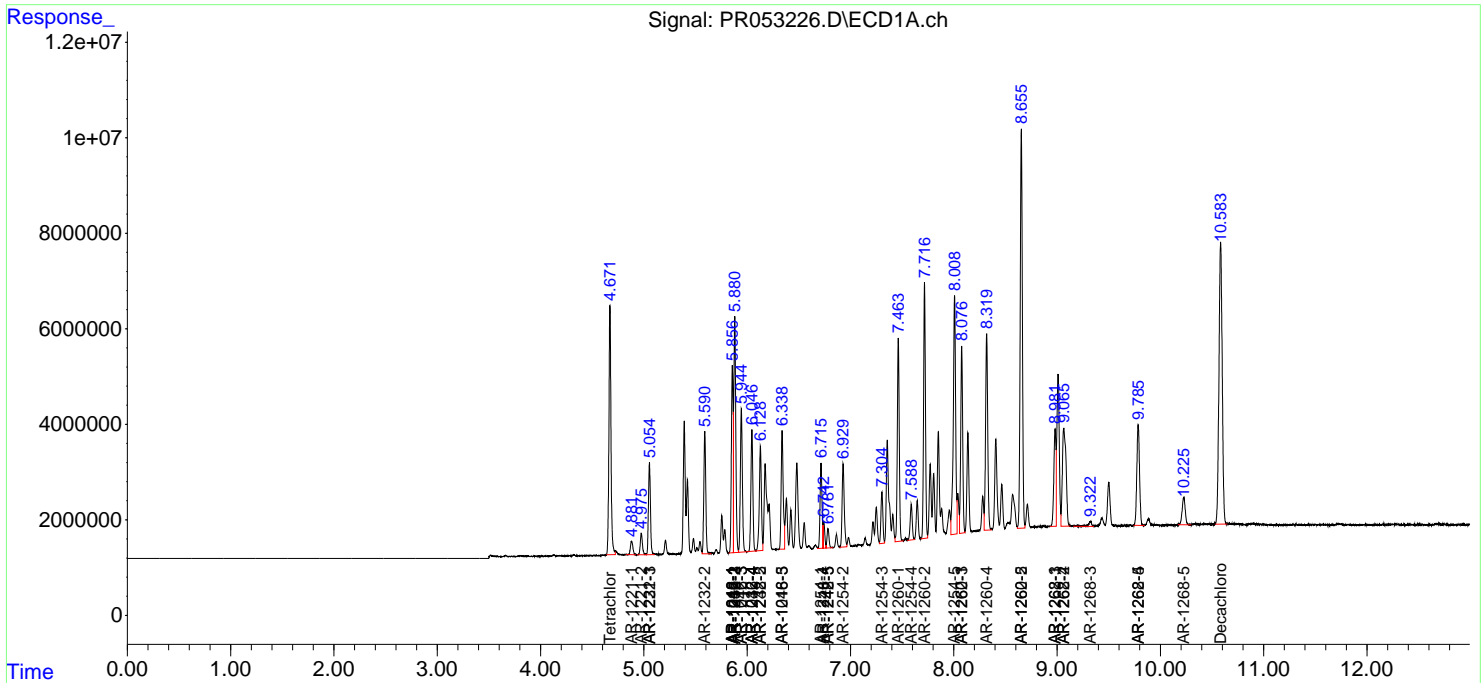
(f)=RT Delta > 1/2 Window (#)=Amounts differ by > 25% (m)=manual int.

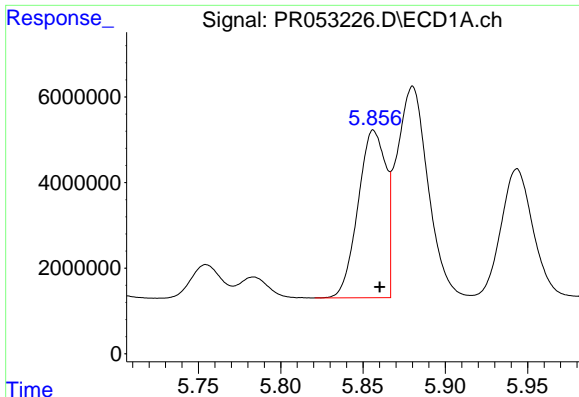
Data Path : Z:\pestpcbsrv\HPCHEM1\ECD\_R\Data\PR012722\  
 Data File : PR053226.D  
 Signal(s) : Signal #1: ECD1A.ch Signal #2: ECD2B.ch  
 Acq On : 27 Jan 2022 23:08  
 Operator : AJ\MA  
 Sample : AR1660CCC400  
 Misc :  
 ALS Vial : 3 Sample Multiplier: 1

Instrument :  
 ECD\_R  
 ClientSampleId :

Integration File signal 1: autoint1.e  
 Integration File signal 2: autoint2.e  
 Quant Time: Jan 28 05:58:34 2022  
 Quant Method : Z:\pestpcbsrv\HPCHEM1\ECD\_R\Method\PR011022CLP.M  
 Quant Title : GC EXTRACTABLES  
 QLast Update : Tue Jan 11 05:43:53 2022  
 Response via : Initial Calibration  
 Integrator: ChemStation

Volume Inj. : 1 µl  
 Signal #1 Phase : ZB MR1 Signal #2 Phase: ZB MR2  
 Signal #1 Info : 30Mx0.32mmx 0.5µm Signal #2 Info : 30M x 0.32mm x 0.25µm

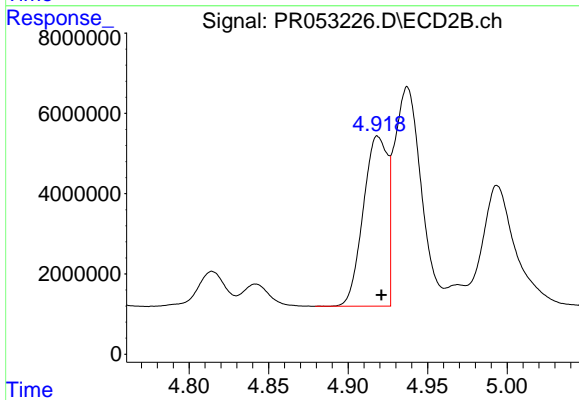




#3 AR-1016-1

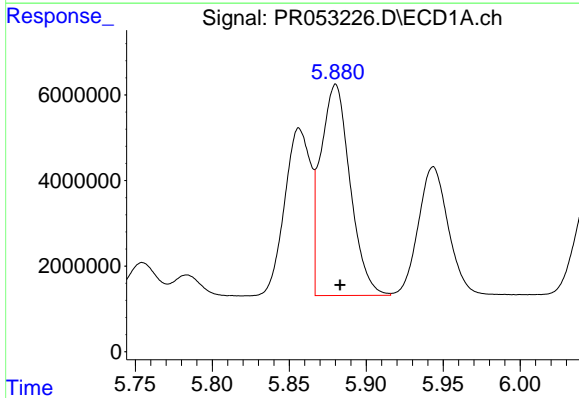
R.T.: 5.856 min  
 Delta R.T.: -0.004 min  
 Response: 46004364  
 Conc: 424.42 ng/ml

Instrument :  
 ECD\_R  
 ClientSampleId :



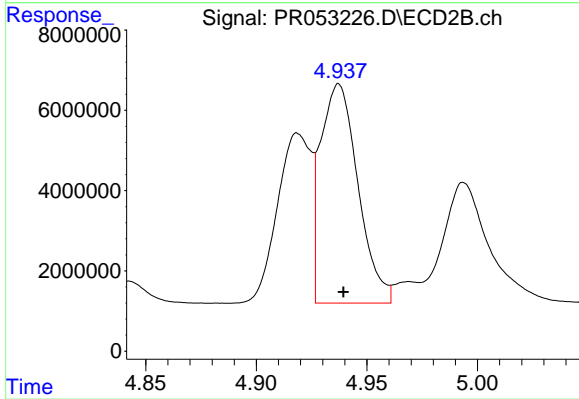
#3 AR-1016-1

R.T.: 4.919 min  
 Delta R.T.: -0.002 min  
 Response: 44986258  
 Conc: 442.65 ng/ml



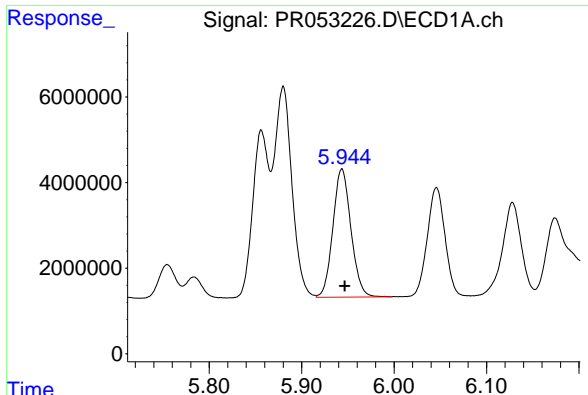
#4 AR-1016-2

R.T.: 5.880 min  
 Delta R.T.: -0.003 min  
 Response: 65661666  
 Conc: 427.07 ng/ml



#4 AR-1016-2

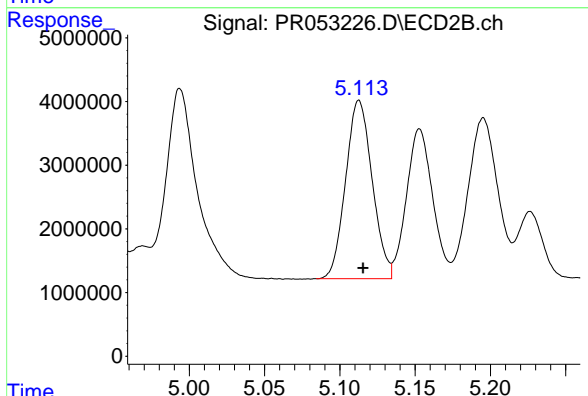
R.T.: 4.937 min  
 Delta R.T.: -0.002 min  
 Response: 64315401  
 Conc: 418.22 ng/ml



#5 AR-1016-3

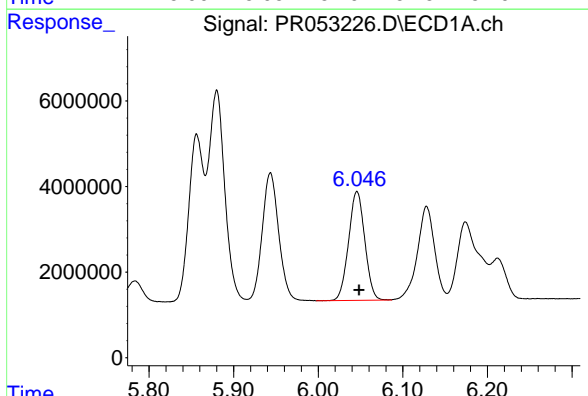
R.T.: 5.944 min  
 Delta R.T.: -0.003 min  
 Response: 40696153  
 Conc: 422.26 ng/ml

Instrument :  
 ECD\_R  
 ClientSampleId :



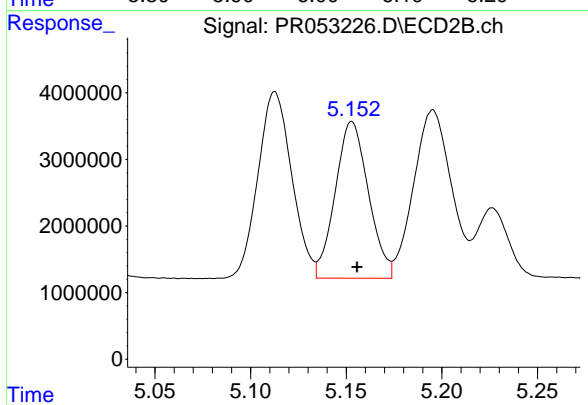
#5 AR-1016-3

R.T.: 5.113 min  
 Delta R.T.: -0.003 min  
 Response: 34427036  
 Conc: 425.23 ng/ml



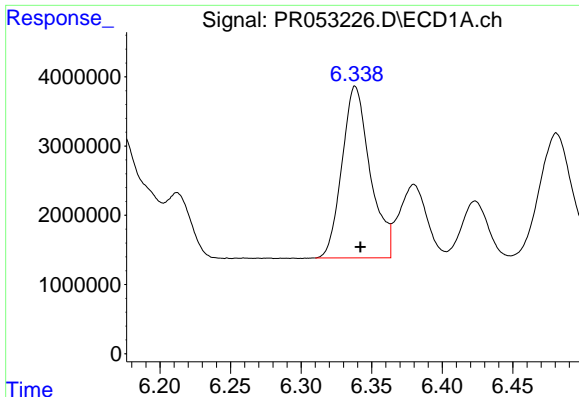
#6 AR-1016-4

R.T.: 6.046 min  
 Delta R.T.: -0.002 min  
 Response: 33895341  
 Conc: 431.14 ng/ml



#6 AR-1016-4

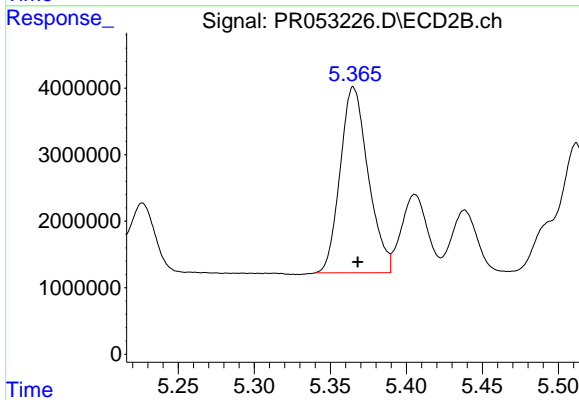
R.T.: 5.153 min  
 Delta R.T.: -0.003 min  
 Response: 28441122  
 Conc: 406.51 ng/ml



#7 AR-1016-5

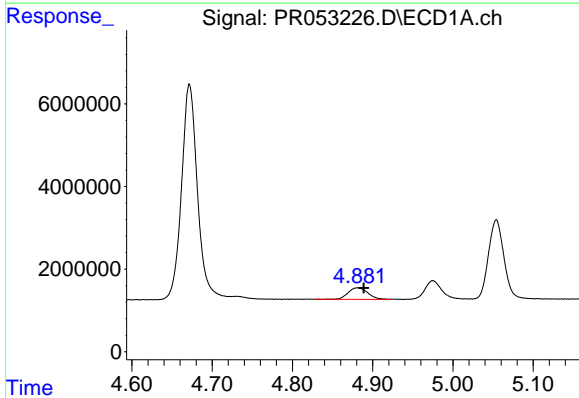
R.T.: 6.338 min  
 Delta R.T.: -0.004 min  
 Response: 34405355  
 Conc: 426.08 ng/ml

Instrument :  
 ECD\_R  
 ClientSampleId :



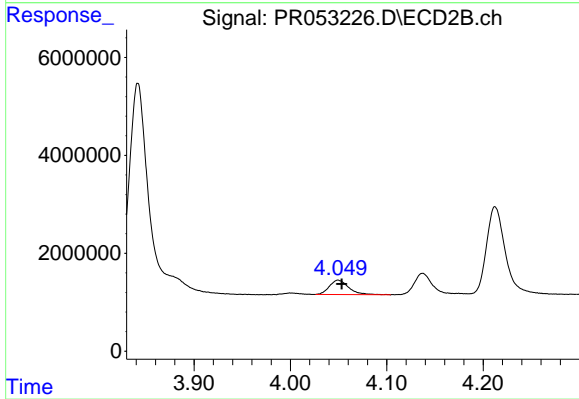
#7 AR-1016-5

R.T.: 5.365 min  
 Delta R.T.: -0.003 min  
 Response: 35865895  
 Conc: 405.72 ng/ml



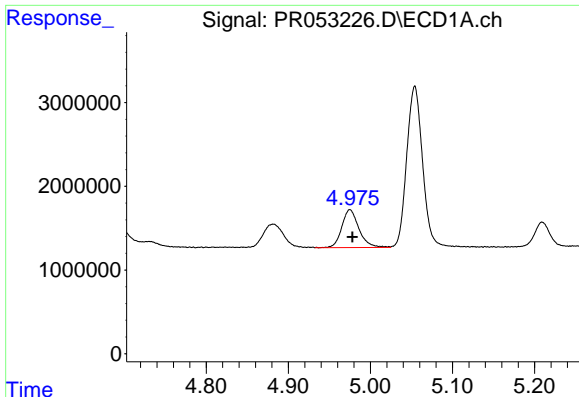
#8 AR-1221-1

R.T.: 4.882 min  
 Delta R.T.: -0.007 min  
 Response: 4725168  
 Conc: 113.01 ng/ml



#8 AR-1221-1

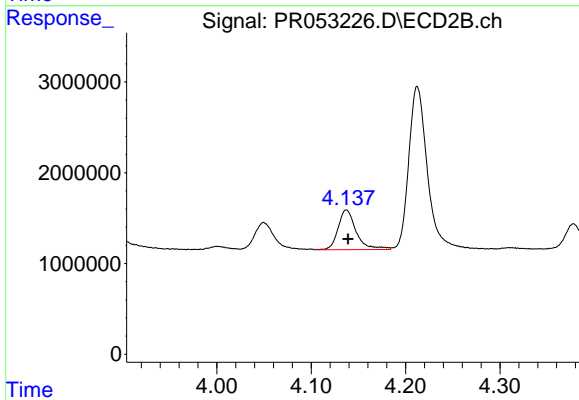
R.T.: 4.050 min  
 Delta R.T.: -0.004 min  
 Response: 4142630  
 Conc: 105.24 ng/ml



#9 AR-1221-2

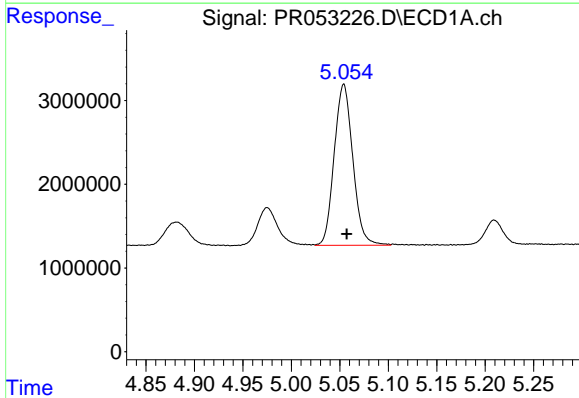
R.T.: 4.975 min  
 Delta R.T.: -0.003 min  
 Response: 6569924  
 Conc: 221.92 ng/ml

Instrument :  
 ECD\_R  
 ClientSampleId :



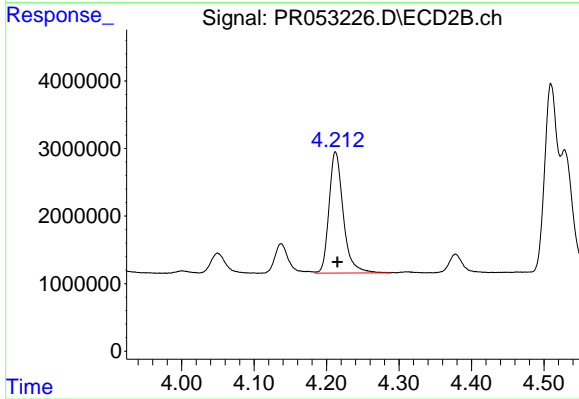
#9 AR-1221-2

R.T.: 4.137 min  
 Delta R.T.: -0.002 min  
 Response: 5830438  
 Conc: 203.47 ng/ml



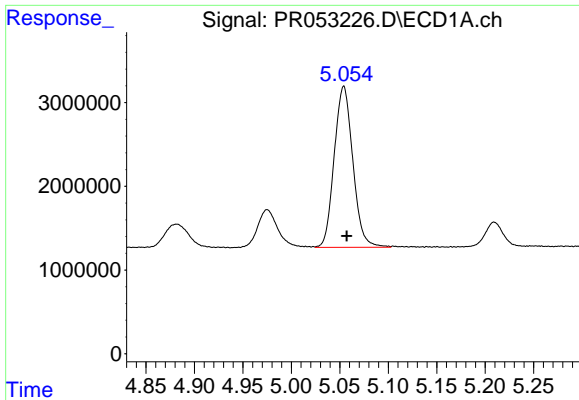
#10 AR-1221-3

R.T.: 5.054 min  
 Delta R.T.: -0.003 min  
 Response: 25813100  
 Conc: 268.31 ng/ml



#10 AR-1221-3

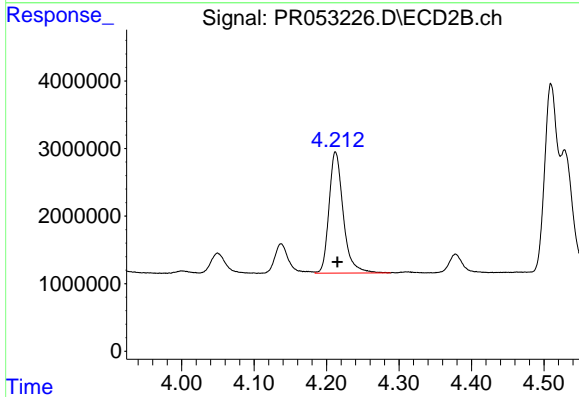
R.T.: 4.212 min  
 Delta R.T.: -0.003 min  
 Response: 24476901  
 Conc: 259.82 ng/ml



#11 AR-1232-1

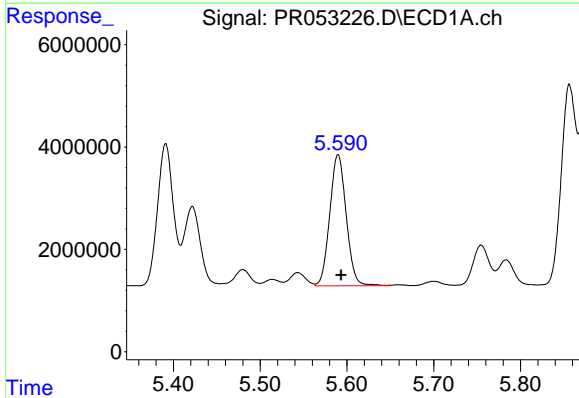
R.T.: 5.054 min  
Delta R.T.: -0.003 min  
Response: 25813100  
Conc: 334.09 ng/ml

Instrument :  
ECD\_R  
ClientSampleId :



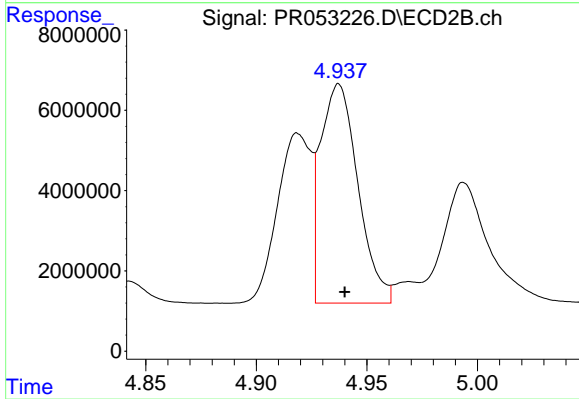
#11 AR-1232-1

R.T.: 4.212 min  
Delta R.T.: -0.003 min  
Response: 24476901  
Conc: 326.67 ng/ml



#12 AR-1232-2

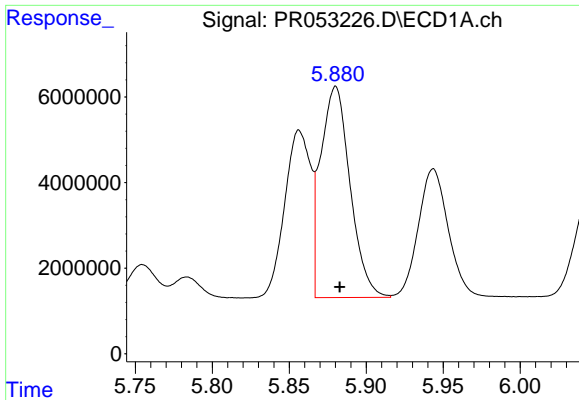
R.T.: 5.590 min  
Delta R.T.: -0.003 min  
Response: 33759779  
Conc: 836.51 ng/ml



#12 AR-1232-2

R.T.: 4.937 min  
Delta R.T.: -0.003 min  
Response: 64315401  
Conc: 886.79 ng/ml

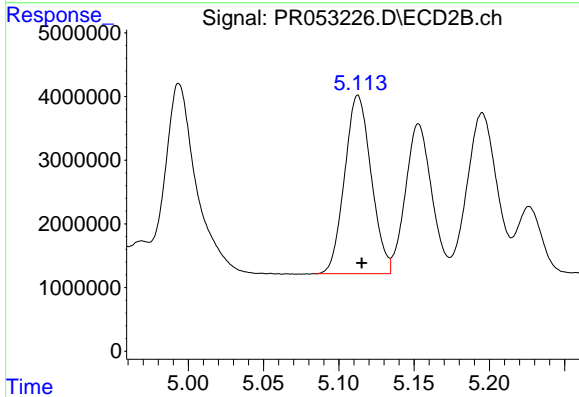




#13 AR-1232-3

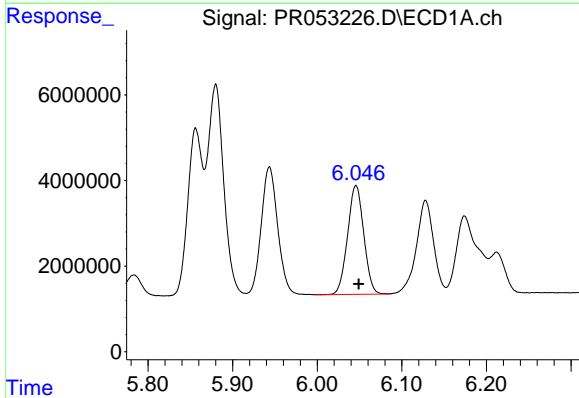
R.T.: 5.880 min  
 Delta R.T.: -0.003 min  
 Response: 65661666  
 Conc: 898.30 ng/ml

Instrument :  
 ECD\_R  
 ClientSampleId :



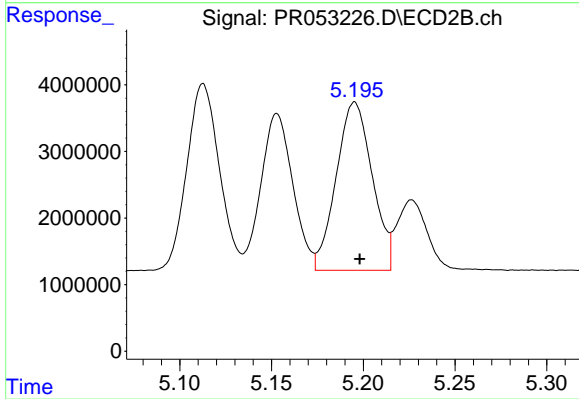
#13 AR-1232-3

R.T.: 5.113 min  
 Delta R.T.: -0.003 min  
 Response: 34427036  
 Conc: 910.29 ng/ml



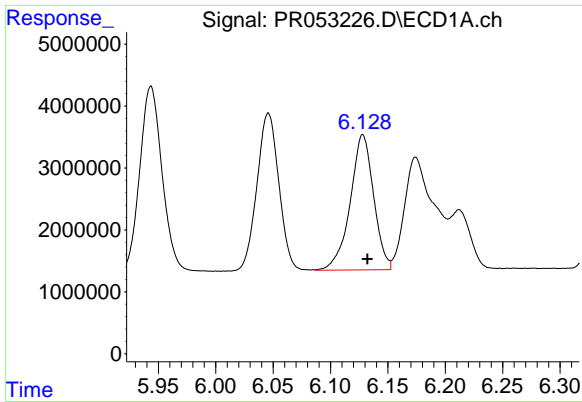
#14 AR-1232-4

R.T.: 6.046 min  
 Delta R.T.: -0.003 min  
 Response: 33895341  
 Conc: 917.88 ng/ml



#14 AR-1232-4

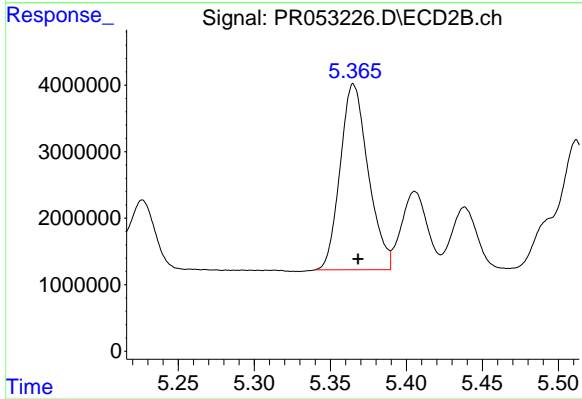
R.T.: 5.195 min  
 Delta R.T.: -0.003 min  
 Response: 34488722  
 Conc: 968.03 ng/ml



#15 AR-1232-5

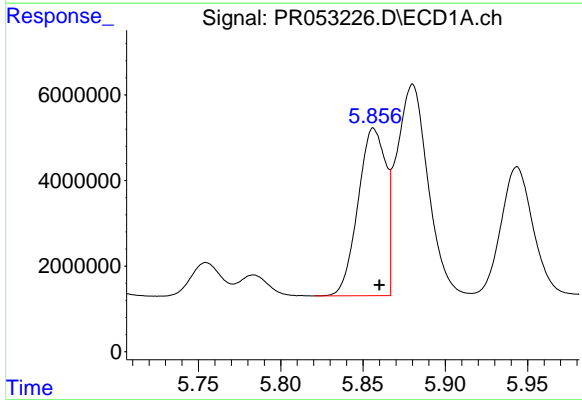
R.T.: 6.128 min  
 Delta R.T.: -0.004 min  
 Response: 30986469  
 Conc: 1027.29 ng/ml

Instrument :  
 ECD\_R  
 ClientSampleId :



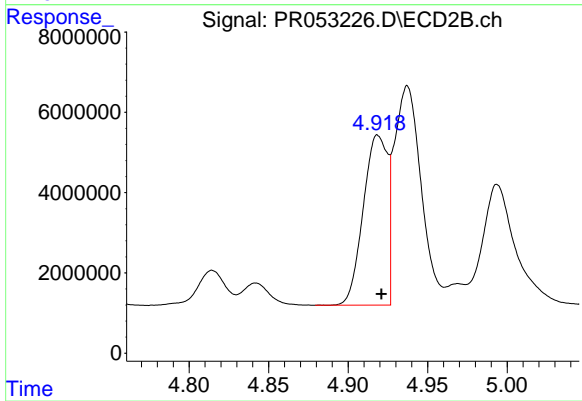
#15 AR-1232-5

R.T.: 5.365 min  
 Delta R.T.: -0.003 min  
 Response: 35865895  
 Conc: 939.46 ng/ml



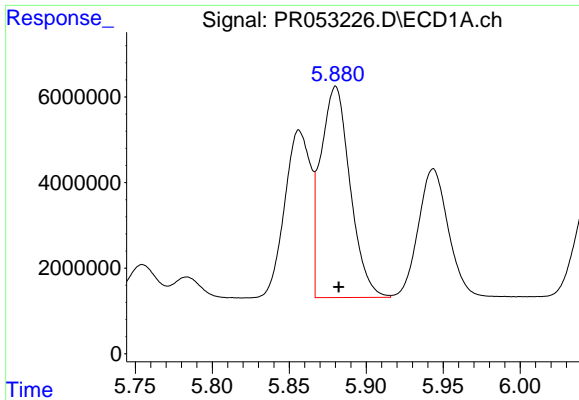
#16 AR-1242-1

R.T.: 5.856 min  
 Delta R.T.: -0.004 min  
 Response: 46004364  
 Conc: 465.88 ng/ml



#16 AR-1242-1

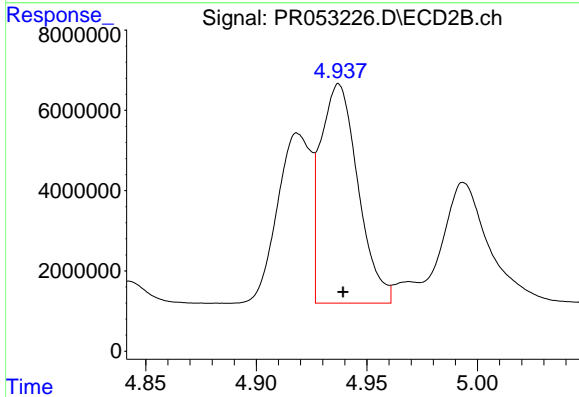
R.T.: 4.919 min  
 Delta R.T.: -0.002 min  
 Response: 44986258  
 Conc: 494.73 ng/ml



#17 AR-1242-2

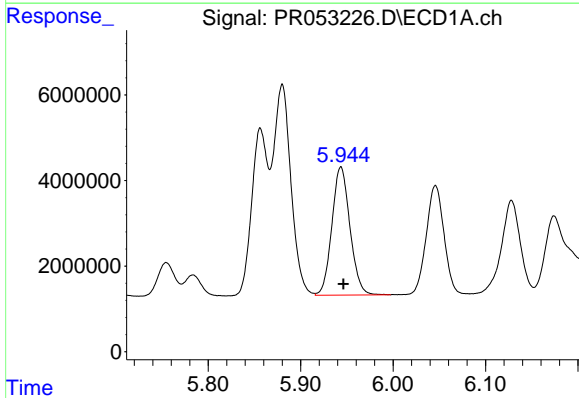
R.T.: 5.880 min  
 Delta R.T.: -0.002 min  
 Response: 65661666  
 Conc: 482.61 ng/ml

Instrument :  
 ECD\_R  
 ClientSampleId :



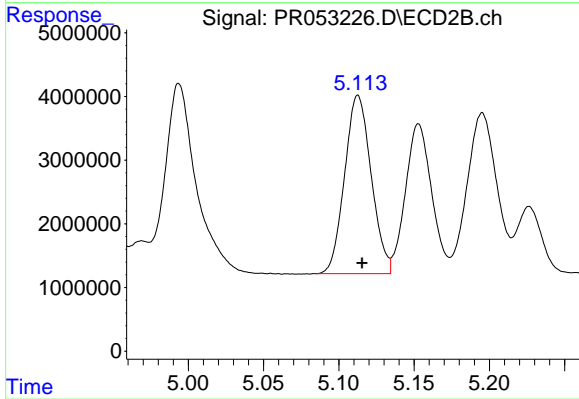
#17 AR-1242-2

R.T.: 4.937 min  
 Delta R.T.: -0.002 min  
 Response: 64315401  
 Conc: 477.02 ng/ml



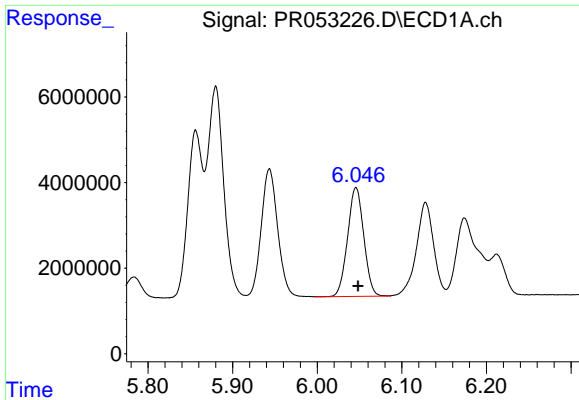
#18 AR-1242-3

R.T.: 5.944 min  
 Delta R.T.: -0.002 min  
 Response: 40696153  
 Conc: 468.00 ng/ml



#18 AR-1242-3

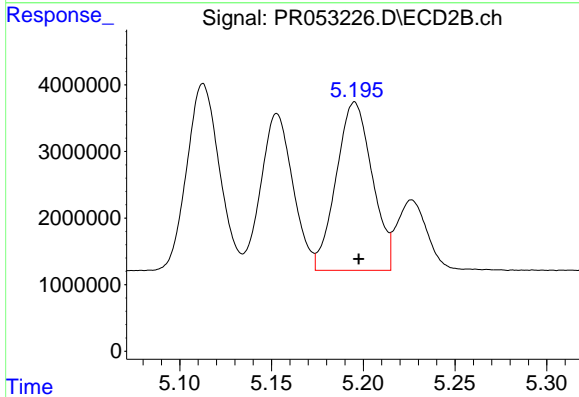
R.T.: 5.113 min  
 Delta R.T.: -0.003 min  
 Response: 34427036  
 Conc: 477.28 ng/ml



#19 AR-1242-4

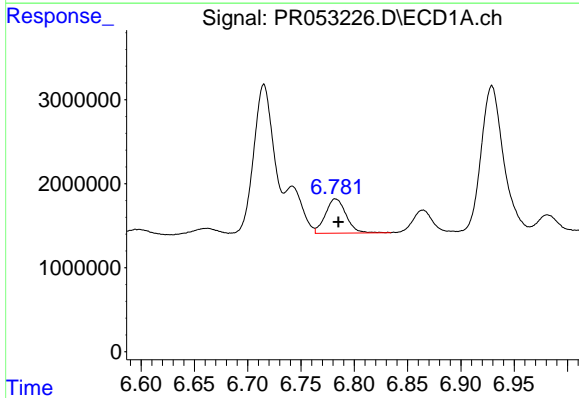
R.T.: 6.046 min  
 Delta R.T.: -0.003 min  
 Response: 33895341  
 Conc: 478.47 ng/ml

Instrument :  
 ECD\_R  
 ClientSampleId :



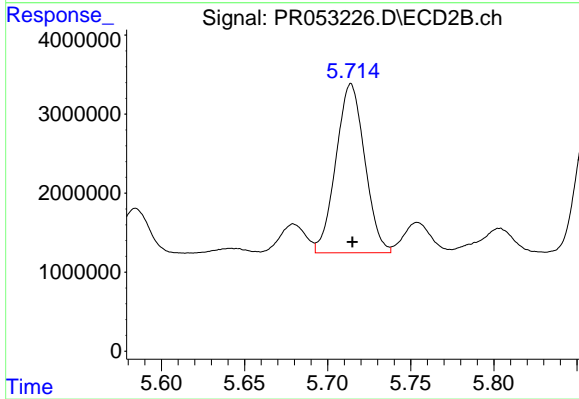
#19 AR-1242-4

R.T.: 5.195 min  
 Delta R.T.: -0.002 min  
 Response: 34488722  
 Conc: 467.33 ng/ml



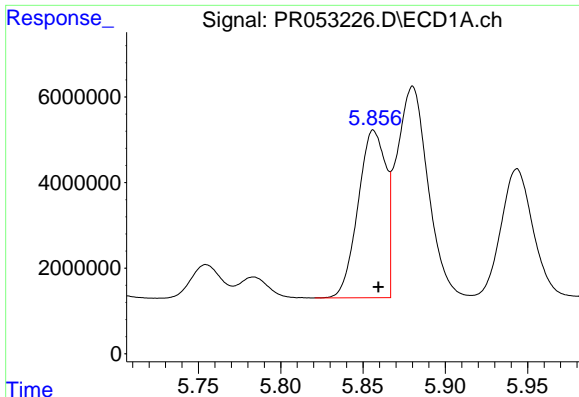
#20 AR-1242-5

R.T.: 6.782 min  
 Delta R.T.: -0.003 min  
 Response: 5533701  
 Conc: 73.30 ng/ml



#20 AR-1242-5

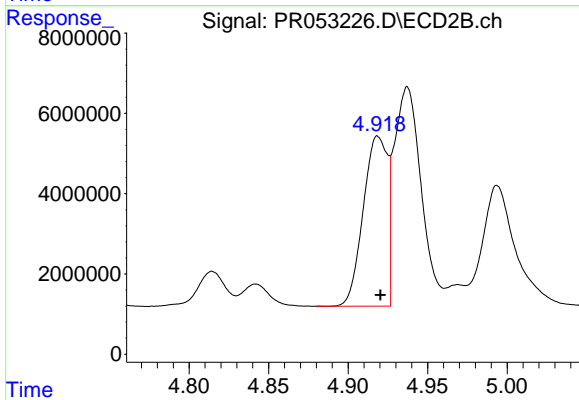
R.T.: 5.714 min  
 Delta R.T.: 0.000 min  
 Response: 25807732  
 Conc: 299.22 ng/ml



#21 AR-1248-1

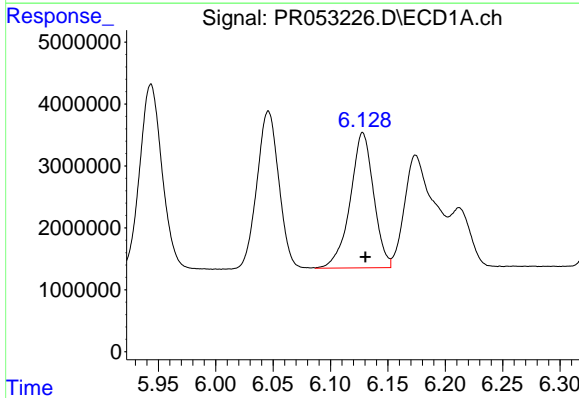
R.T.: 5.856 min  
 Delta R.T.: -0.003 min  
 Response: 46004364  
 Conc: 620.93 ng/ml

Instrument :  
 ECD\_R  
 ClientSampleId :



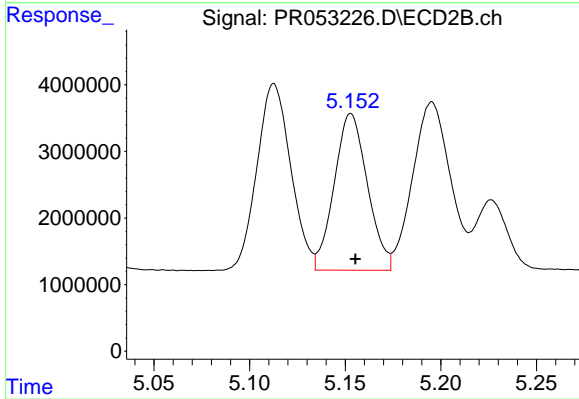
#21 AR-1248-1

R.T.: 4.919 min  
 Delta R.T.: -0.002 min  
 Response: 44986258  
 Conc: 646.65 ng/ml



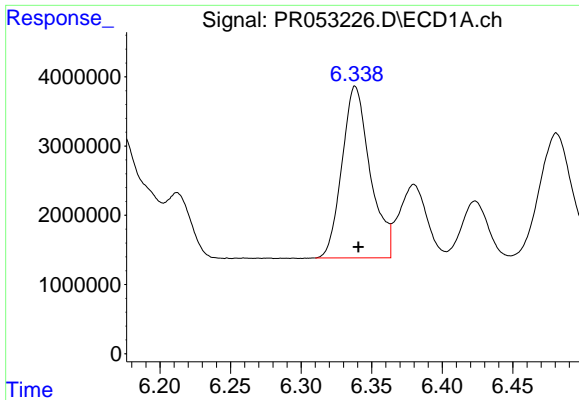
#22 AR-1248-2

R.T.: 6.128 min  
 Delta R.T.: -0.002 min  
 Response: 30986469  
 Conc: 287.47 ng/ml



#22 AR-1248-2

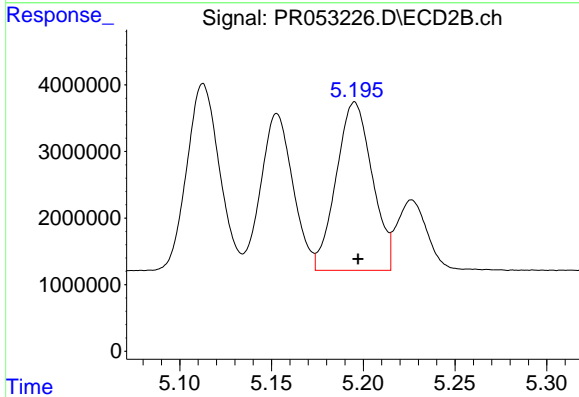
R.T.: 5.153 min  
 Delta R.T.: -0.002 min  
 Response: 28441122  
 Conc: 282.63 ng/ml



#23 AR-1248-3

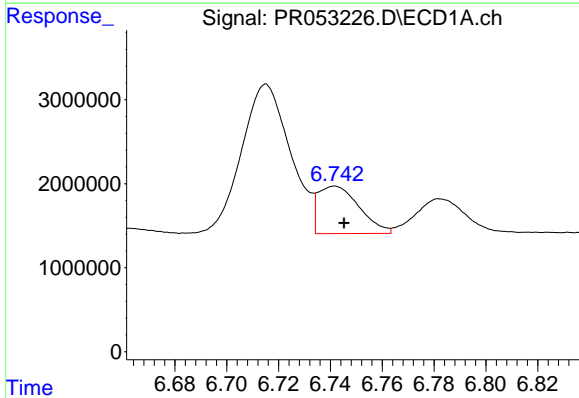
R.T.: 6.338 min  
 Delta R.T.: -0.002 min  
 Response: 34405355  
 Conc: 291.99 ng/ml

Instrument :  
 ECD\_R  
 ClientSampleId :



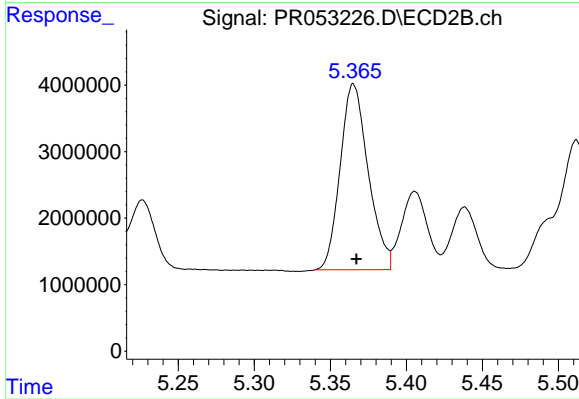
#23 AR-1248-3

R.T.: 5.195 min  
 Delta R.T.: -0.002 min  
 Response: 34488722  
 Conc: 326.79 ng/ml



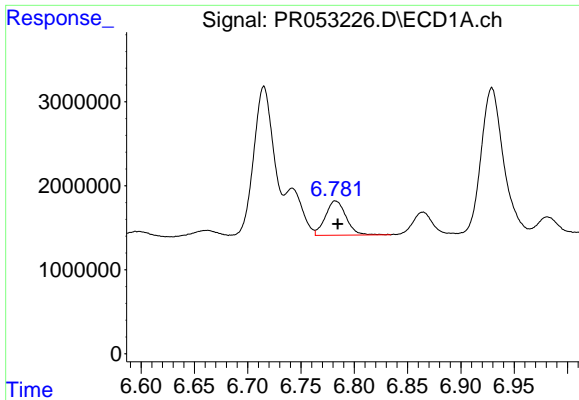
#24 AR-1248-4

R.T.: 6.742 min  
 Delta R.T.: -0.004 min  
 Response: 6247257  
 Conc: 48.03 ng/ml



#24 AR-1248-4

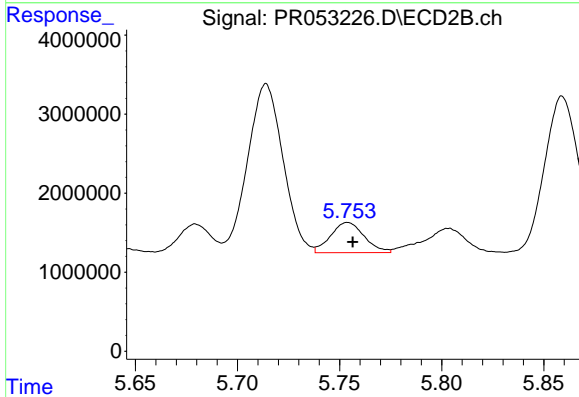
R.T.: 5.365 min  
 Delta R.T.: -0.002 min  
 Response: 35865895  
 Conc: 290.47 ng/ml



#25 AR-1248-5

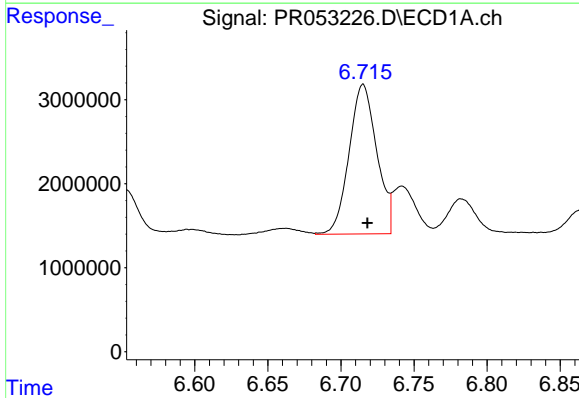
R.T.: 6.782 min  
 Delta R.T.: -0.002 min  
 Response: 5533701  
 Conc: 44.03 ng/ml

Instrument :  
 ECD\_R  
 ClientSampleId :



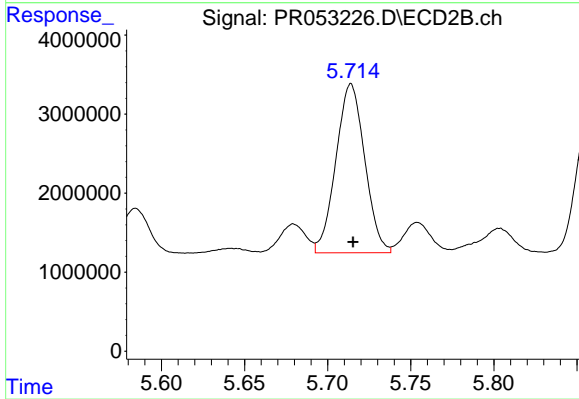
#25 AR-1248-5

R.T.: 5.754 min  
 Delta R.T.: -0.002 min  
 Response: 4391154  
 Conc: 37.94 ng/ml



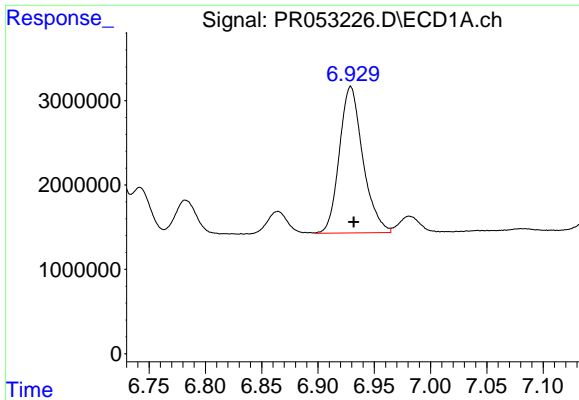
#26 AR-1254-1

R.T.: 6.715 min  
 Delta R.T.: -0.003 min  
 Response: 23459094  
 Conc: 180.46 ng/ml



#26 AR-1254-1

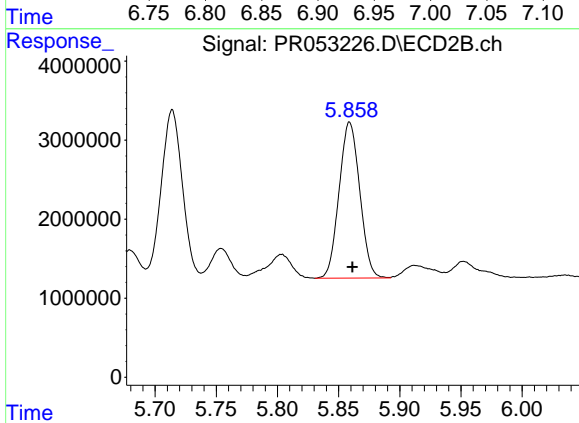
R.T.: 5.714 min  
 Delta R.T.: -0.001 min  
 Response: 25807732  
 Conc: 148.93 ng/ml



#27 AR-1254-2

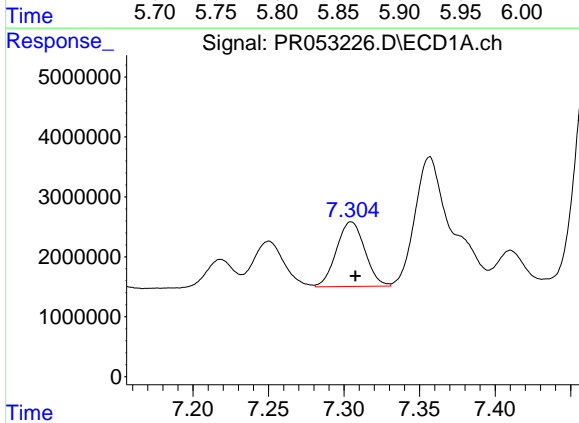
R.T.: 6.929 min  
 Delta R.T.: -0.003 min  
 Response: 25209960  
 Conc: 125.87 ng/ml

Instrument :  
 ECD\_R  
 ClientSampleId :



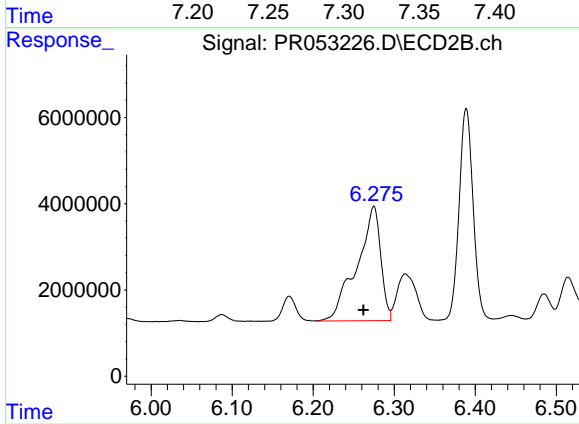
#27 AR-1254-2

R.T.: 5.859 min  
 Delta R.T.: -0.002 min  
 Response: 23247843  
 Conc: 153.66 ng/ml



#28 AR-1254-3

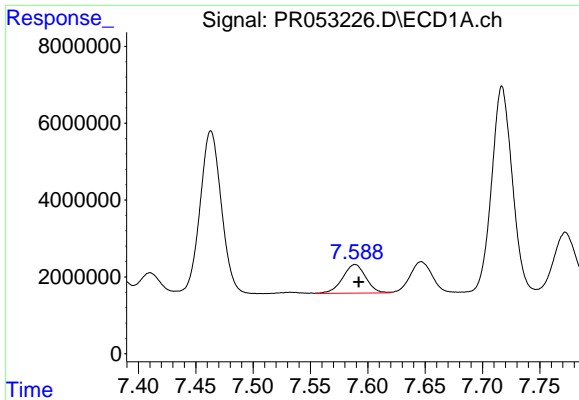
R.T.: 7.305 min  
 Delta R.T.: -0.003 min  
 Response: 14114467  
 Conc: 68.57 ng/ml



#28 AR-1254-3

R.T.: 6.275 min  
 Delta R.T.: 0.013 min  
 Response: 54279244  
 Conc: 221.22 ng/ml

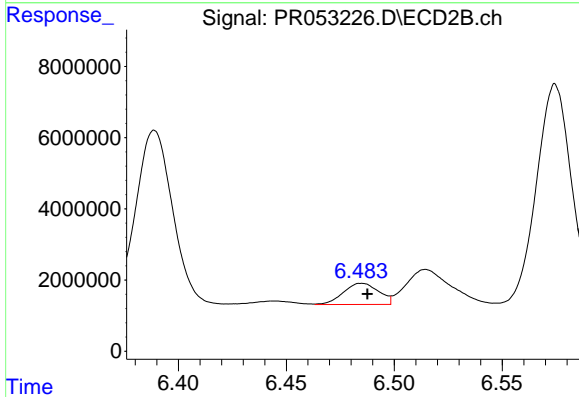




#29 AR-1254-4

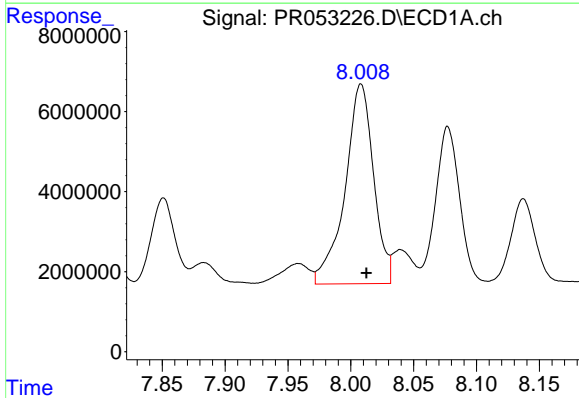
R.T.: 7.589 min  
 Delta R.T.: -0.003 min  
 Response: 10448450  
 Conc: 68.22 ng/ml

Instrument :  
 ECD\_R  
 ClientSampleId :



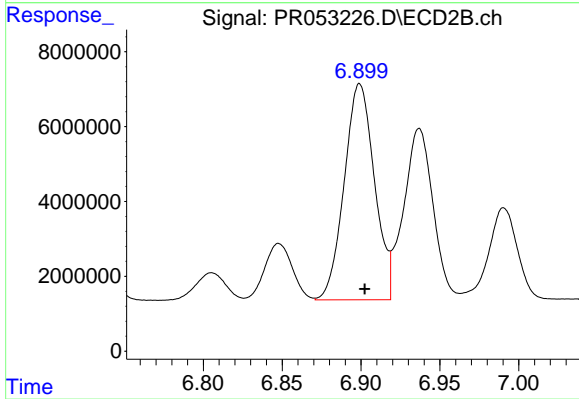
#29 AR-1254-4

R.T.: 6.485 min  
 Delta R.T.: -0.003 min  
 Response: 6768178  
 Conc: 45.93 ng/ml



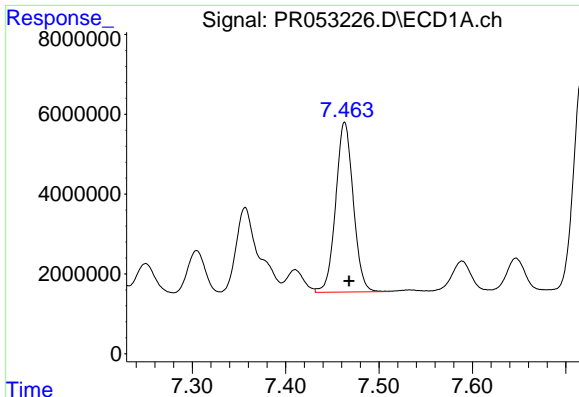
#30 AR-1254-5

R.T.: 8.008 min  
 Delta R.T.: -0.004 min  
 Response: 79032986  
 Conc: 465.63 ng/ml



#30 AR-1254-5

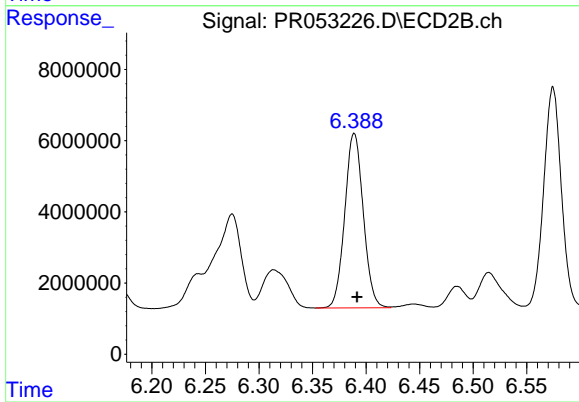
R.T.: 6.899 min  
 Delta R.T.: -0.003 min  
 Response: 76979837  
 Conc: 359.46 ng/ml



#31 AR-1260-1

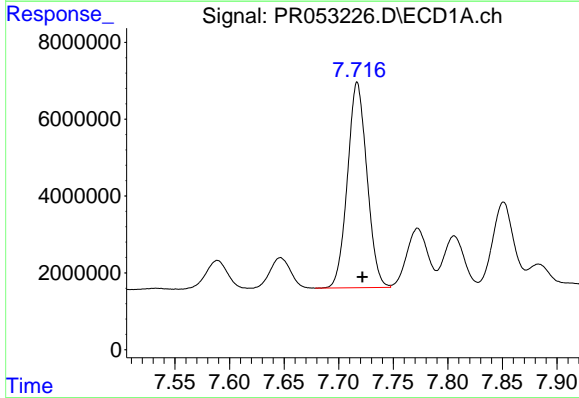
R.T.: 7.463 min  
 Delta R.T.: -0.005 min  
 Response: 55584429  
 Conc: 401.79 ng/ml

Instrument :  
 ECD\_R  
 ClientSampleId :



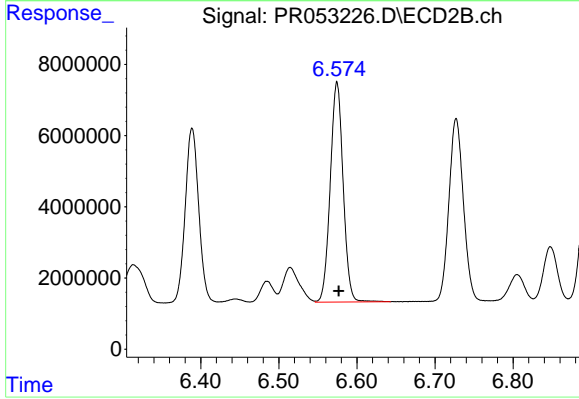
#31 AR-1260-1

R.T.: 6.389 min  
 Delta R.T.: -0.003 min  
 Response: 58966605  
 Conc: 359.62 ng/ml



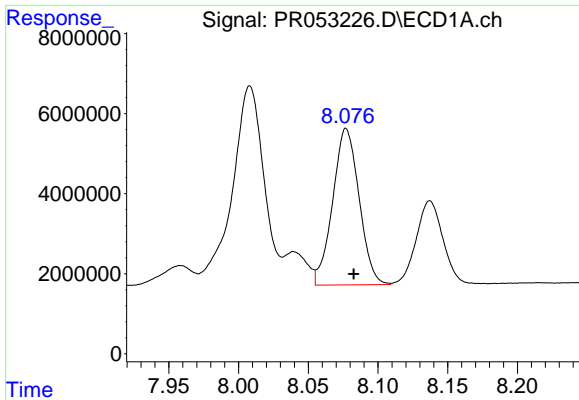
#32 AR-1260-2

R.T.: 7.717 min  
 Delta R.T.: -0.005 min  
 Response: 66531411  
 Conc: 400.35 ng/ml



#32 AR-1260-2

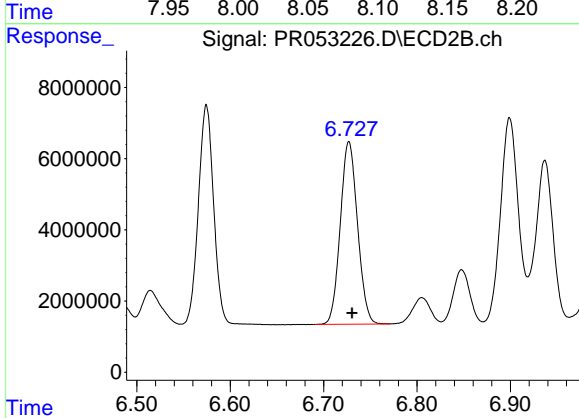
R.T.: 6.575 min  
 Delta R.T.: -0.002 min  
 Response: 70869081  
 Conc: 358.45 ng/ml



#33 AR-1260-3

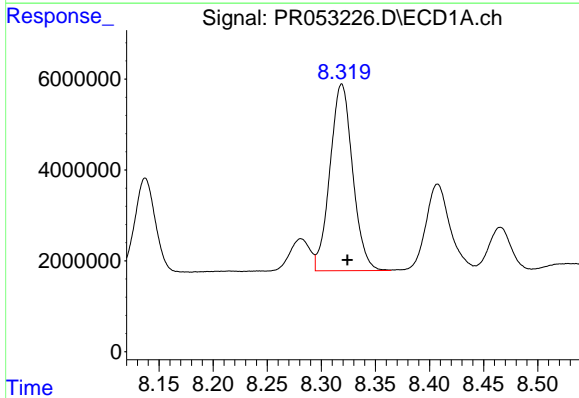
R.T.: 8.077 min  
 Delta R.T.: -0.006 min  
 Response: 51610238  
 Conc: 402.01 ng/ml

Instrument :  
 ECD\_R  
 ClientSampleId :



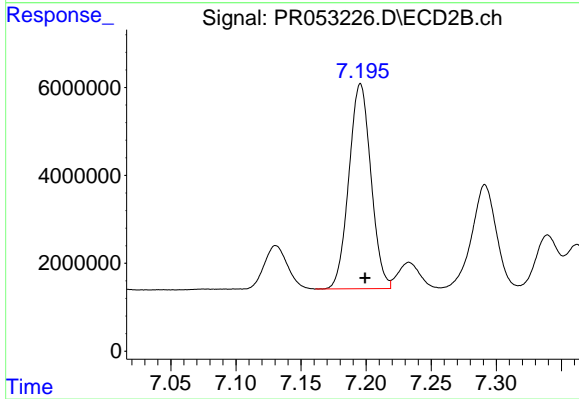
#33 AR-1260-3

R.T.: 6.727 min  
 Delta R.T.: -0.003 min  
 Response: 65842155  
 Conc: 341.31 ng/ml



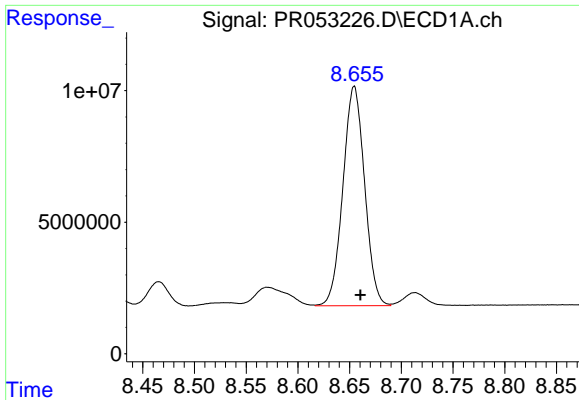
#34 AR-1260-4

R.T.: 8.319 min  
 Delta R.T.: -0.005 min  
 Response: 59937645  
 Conc: 405.84 ng/ml



#34 AR-1260-4

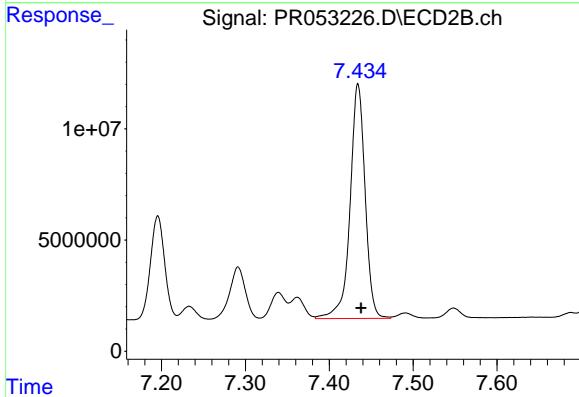
R.T.: 7.196 min  
 Delta R.T.: -0.004 min  
 Response: 54987906  
 Conc: 339.52 ng/ml



#35 AR-1260-5

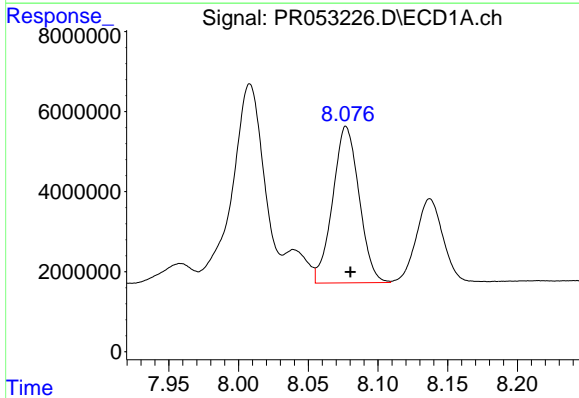
R.T.: 8.654 min  
 Delta R.T.: -0.006 min  
 Response: 121792646  
 Conc: 420.80 ng/ml

Instrument :  
 ECD\_R  
 ClientSampleId :



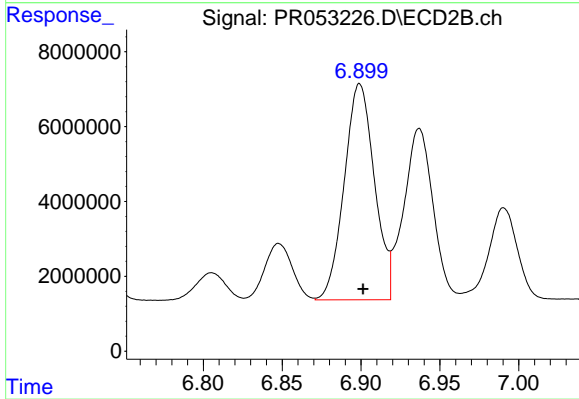
#35 AR-1260-5

R.T.: 7.434 min  
 Delta R.T.: -0.004 min  
 Response: 131386859  
 Conc: 355.09 ng/ml



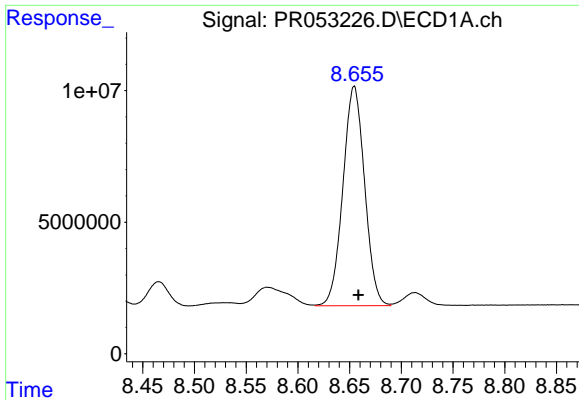
#36 AR-1262-1

R.T.: 8.077 min  
 Delta R.T.: -0.003 min  
 Response: 51610238  
 Conc: 244.08 ng/ml



#36 AR-1262-1

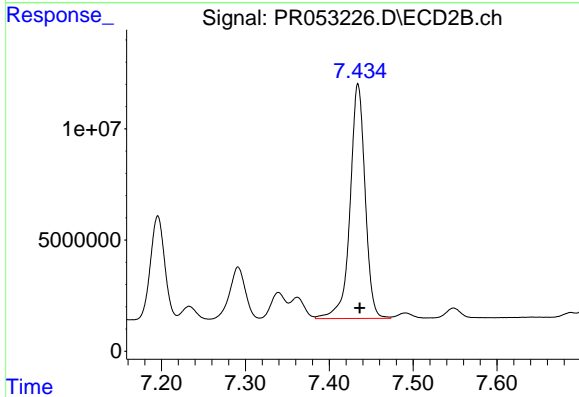
R.T.: 6.899 min  
 Delta R.T.: -0.002 min  
 Response: 76979837  
 Conc: 647.45 ng/ml



#37 AR-1262-2

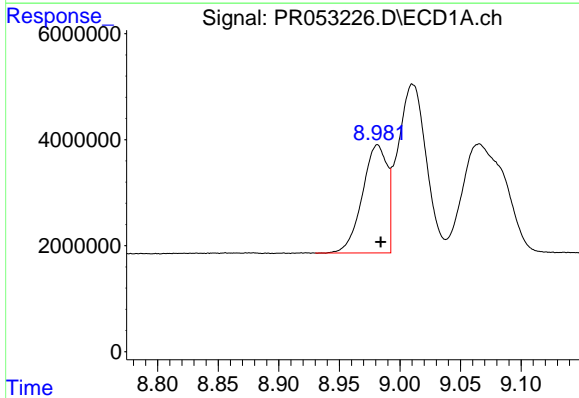
R.T.: 8.654 min  
 Delta R.T.: -0.004 min  
 Response: 121792646  
 Conc: 319.56 ng/ml

Instrument :  
 ECD\_R  
 ClientSampleId :



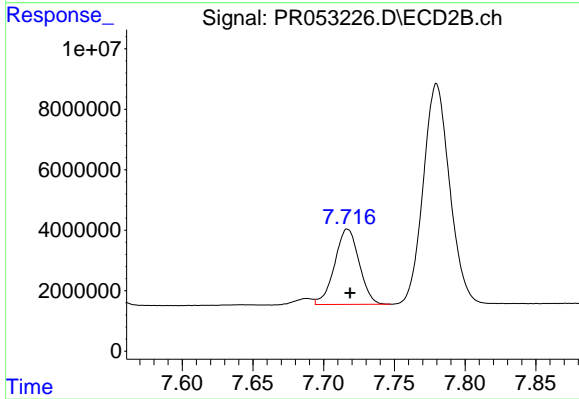
#37 AR-1262-2

R.T.: 7.434 min  
 Delta R.T.: -0.002 min  
 Response: 131386859  
 Conc: 325.68 ng/ml



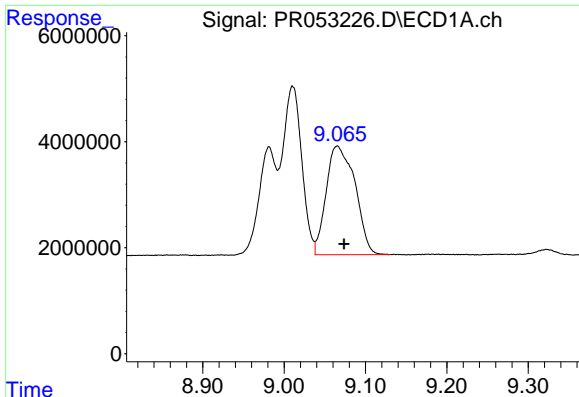
#38 AR-1262-3

R.T.: 8.981 min  
 Delta R.T.: -0.003 min  
 Response: 29045357  
 Conc: 168.97 ng/ml



#38 AR-1262-3

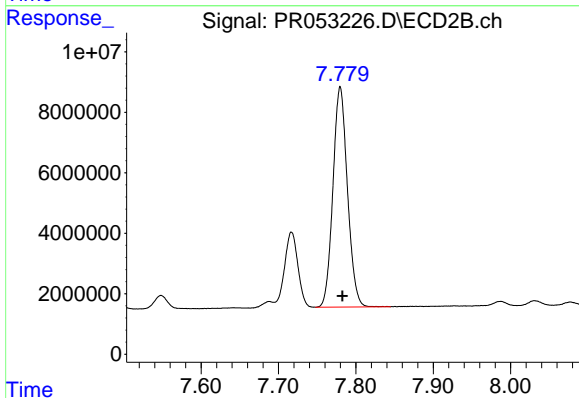
R.T.: 7.717 min  
 Delta R.T.: -0.002 min  
 Response: 30009652  
 Conc: 183.78 ng/ml



#39 AR-1262-4

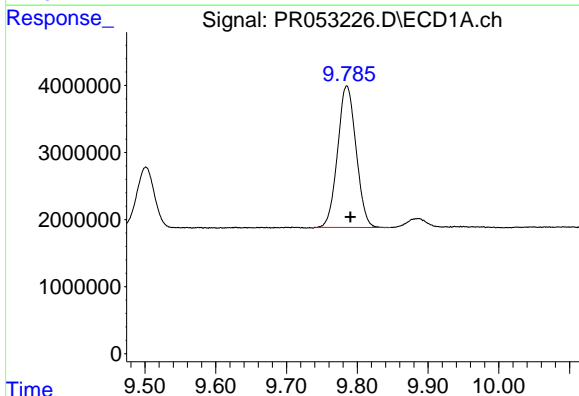
R.T.: 9.065 min  
 Delta R.T.: -0.008 min  
 Response: 50623257  
 Conc: 452.08 ng/ml

Instrument :  
 ECD\_R  
 ClientSampleId :



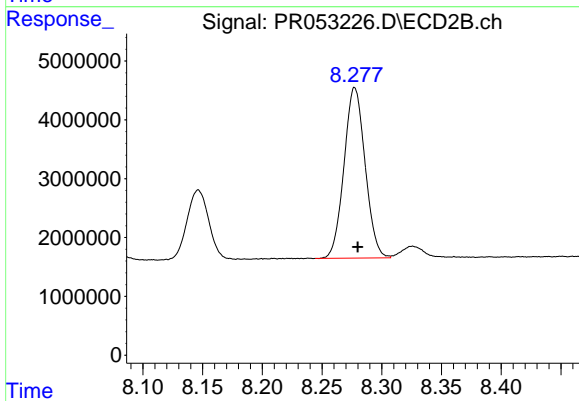
#39 AR-1262-4

R.T.: 7.780 min  
 Delta R.T.: -0.003 min  
 Response: 94935193  
 Conc: 315.55 ng/ml



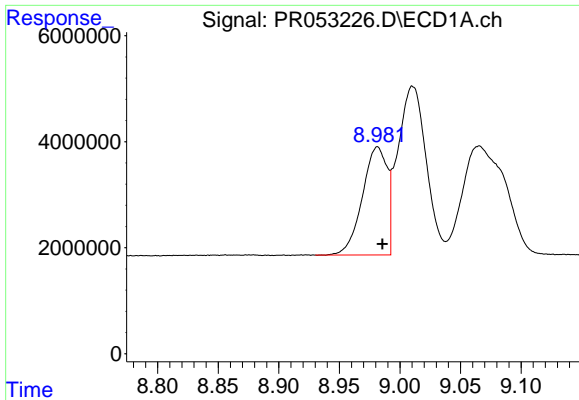
#40 AR-1262-5

R.T.: 9.785 min  
 Delta R.T.: -0.005 min  
 Response: 38236358  
 Conc: 258.69 ng/ml



#40 AR-1262-5

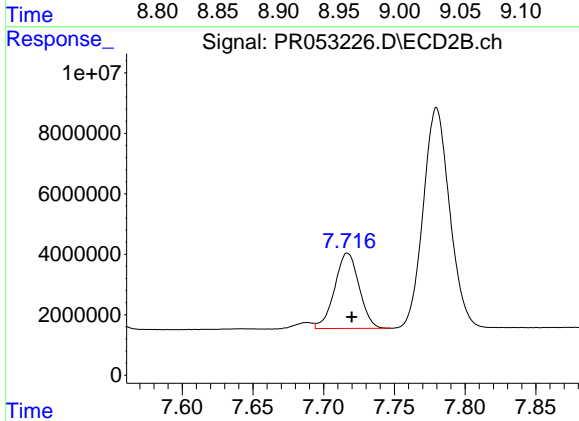
R.T.: 8.277 min  
 Delta R.T.: -0.003 min  
 Response: 35704377  
 Conc: 249.26 ng/ml



#41 AR-1268-1

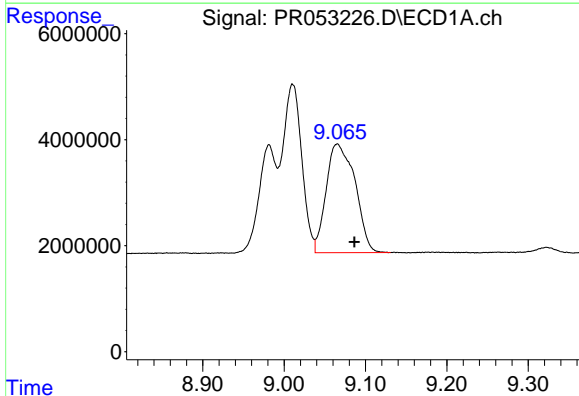
R.T.: 8.981 min  
 Delta R.T.: -0.004 min  
 Response: 29045357  
 Conc: 66.42 ng/ml

Instrument :  
 ECD\_R  
 ClientSampleId :



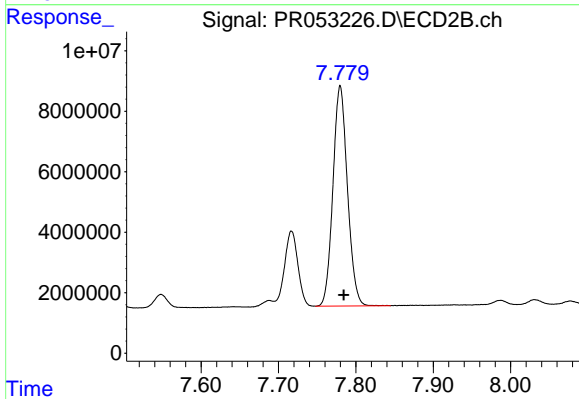
#41 AR-1268-1

R.T.: 7.717 min  
 Delta R.T.: -0.003 min  
 Response: 30009652  
 Conc: 67.51 ng/ml



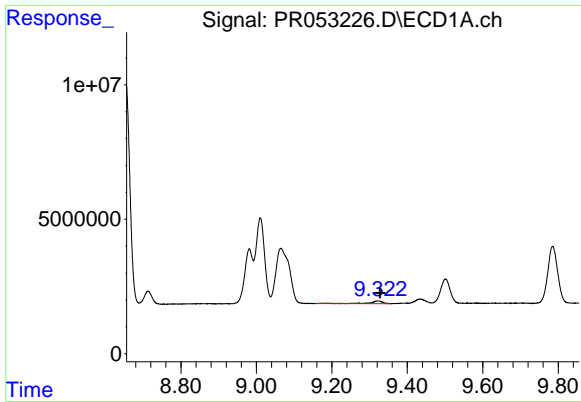
#42 AR-1268-2

R.T.: 9.065 min  
 Delta R.T.: -0.021 min  
 Response: 50623257  
 Conc: 126.33 ng/ml



#42 AR-1268-2

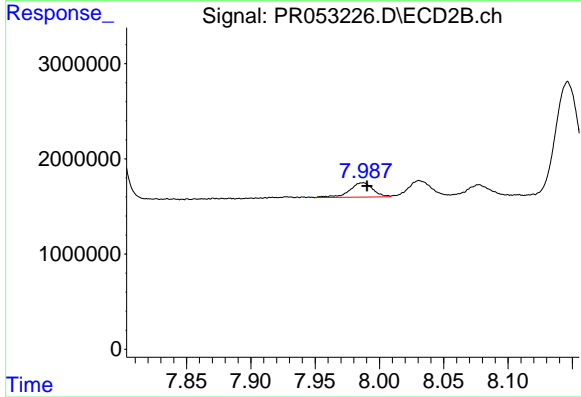
R.T.: 7.780 min  
 Delta R.T.: -0.004 min  
 Response: 94935193  
 Conc: 233.97 ng/ml



#43 AR-1268-3

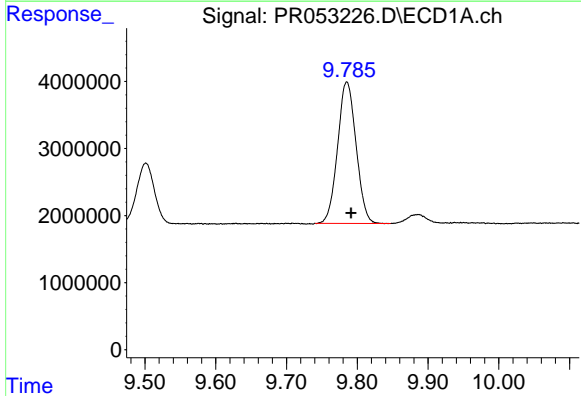
R.T.: 9.323 min  
 Delta R.T.: -0.005 min  
 Response: 2601923  
 Conc: 7.53 ng/ml

Instrument :  
 ECD\_R  
 ClientSampleId :



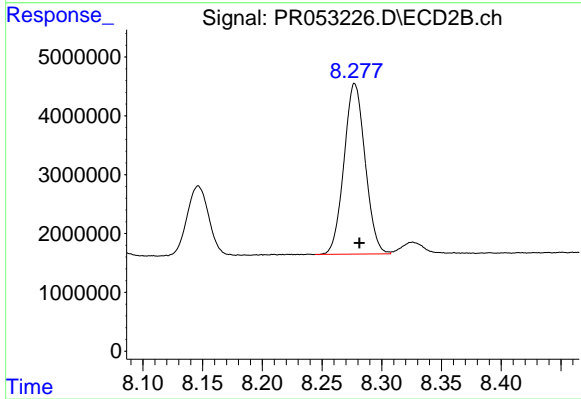
#43 AR-1268-3

R.T.: 7.987 min  
 Delta R.T.: -0.003 min  
 Response: 1926472  
 Conc: 5.51 ng/ml



#44 AR-1268-4

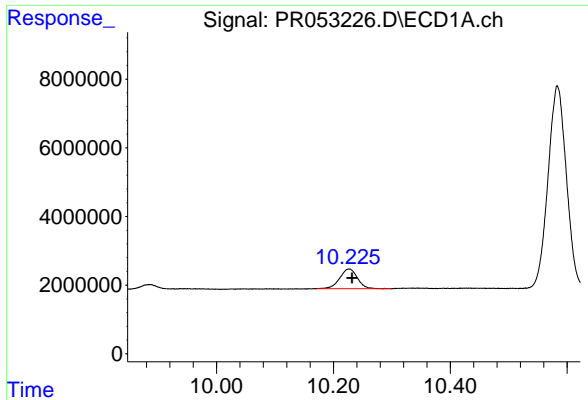
R.T.: 9.785 min  
 Delta R.T.: -0.006 min  
 Response: 38236358  
 Conc: 245.11 ng/ml



#44 AR-1268-4

R.T.: 8.277 min  
 Delta R.T.: -0.004 min  
 Response: 35704377  
 Conc: 236.79 ng/ml

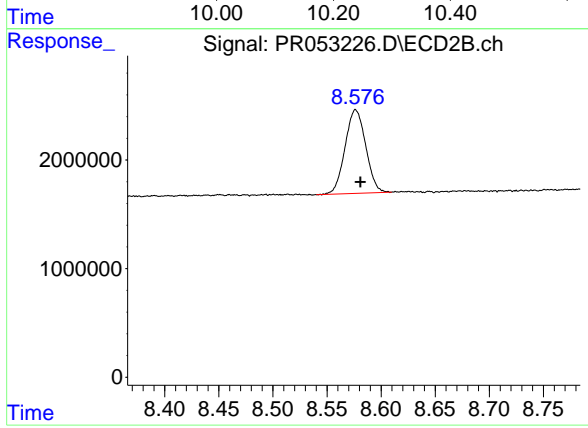




#45 AR-1268-5

R.T.: 10.227 min  
Delta R.T.: -0.005 min  
Response: 11937087  
Conc: 10.61 ng/ml

Instrument :  
ECD\_R  
ClientSampleId :



#45 AR-1268-5

R.T.: 8.576 min  
Delta R.T.: -0.004 min  
Response: 10241419  
Conc: 9.45 ng/ml