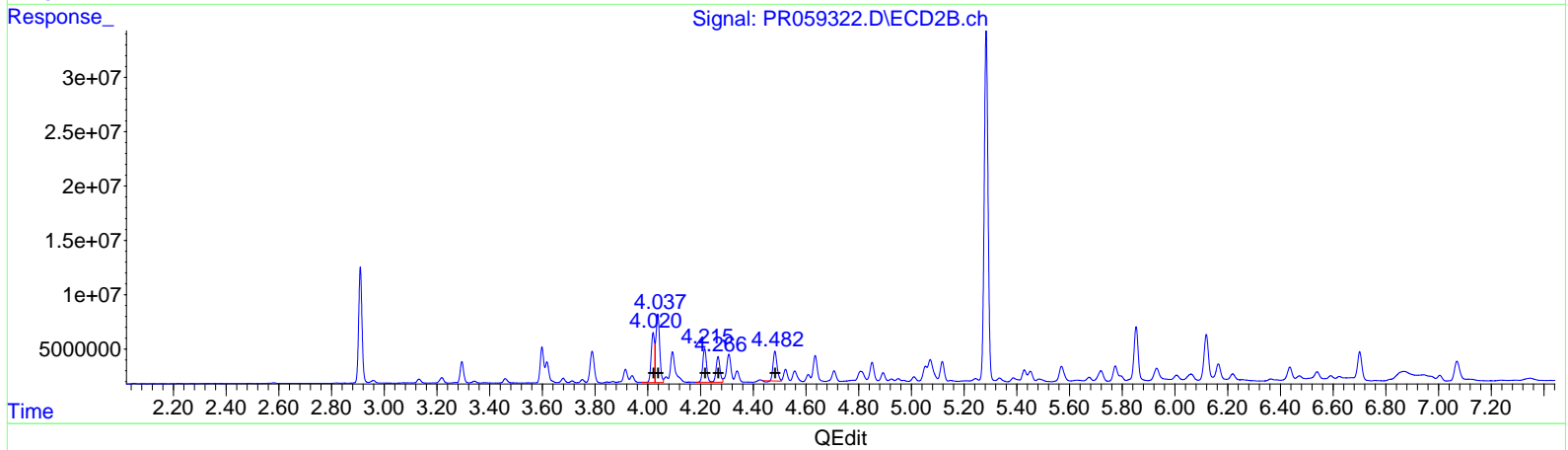
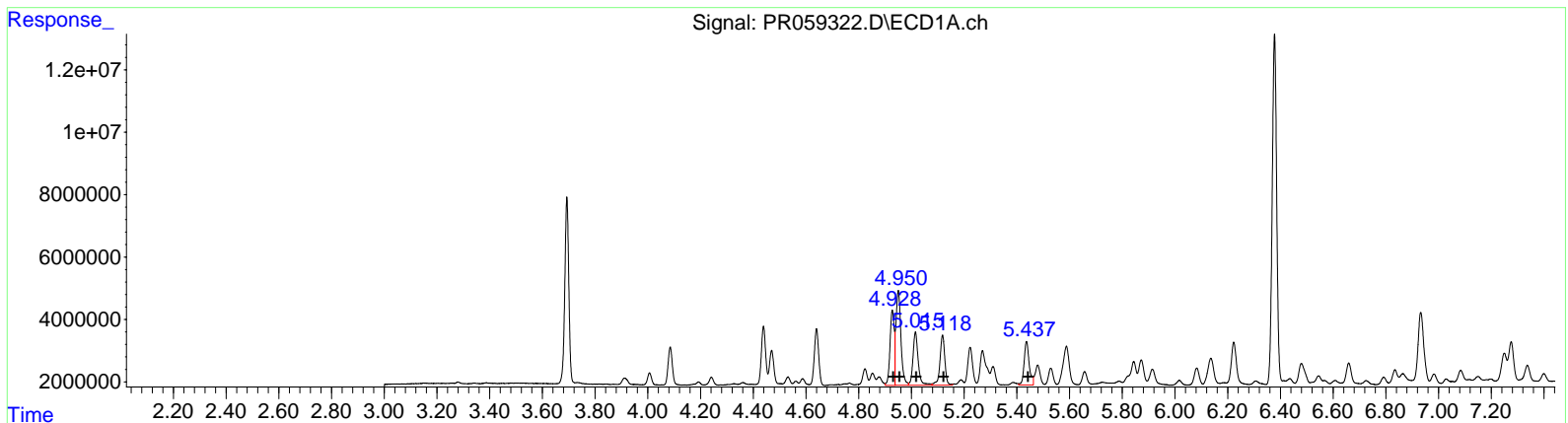


Data Path : Z:\pestpcbsrv\HPCHEM1\ECD\_R\Data\PR013123\  
 Data File : PR059322.D  
 Signal(s) : Signal #1: ECD1A.ch Signal #2: ECD2B.ch  
 Acq On : 31 Jan 2023 18:39  
 Operator : YP\AJ  
 Sample : 01338-10  
 Misc :  
 ALS Vial : 36 Sample Multiplier: 1

Integration File signal 1: autoint1.e  
 Integration File signal 2: autoint2.e  
 Quant Time: Jan 31 21:17:22 2023  
 Quant Method : Z:\pestpcbsrv\HPCHEM1\ECD\_R\Method\PR012723CLP.M  
 Quant Title : GC EXTRACTABLES  
 QLast Update : Fri Jan 27 08:44:40 2023  
 Response via : Initial Calibration  
 Integrator: ChemStation

Volume Inj. : 1 µl  
 Signal #1 Phase : ZB MR1 Signal #2 Phase: ZB MR2  
 Signal #1 Info : 30Mx0.32mmx 0.5µm Signal #2 Info : 30M x 0.32mm x 0.25µm



(3) AR-1016-1 (L1)

R.T.	Response	Conc
4.93	26641169	307.57
4.95	39883967	335.55
5.02	23472029	306.89
5.12	20662088	332.09
5.44	18612571	302.80

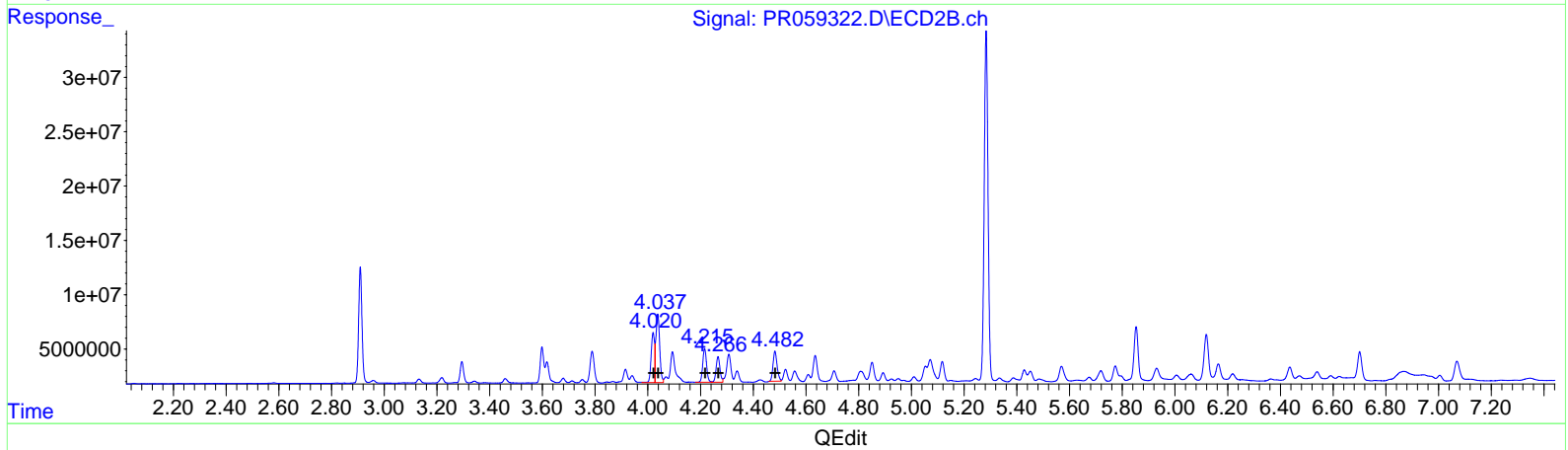
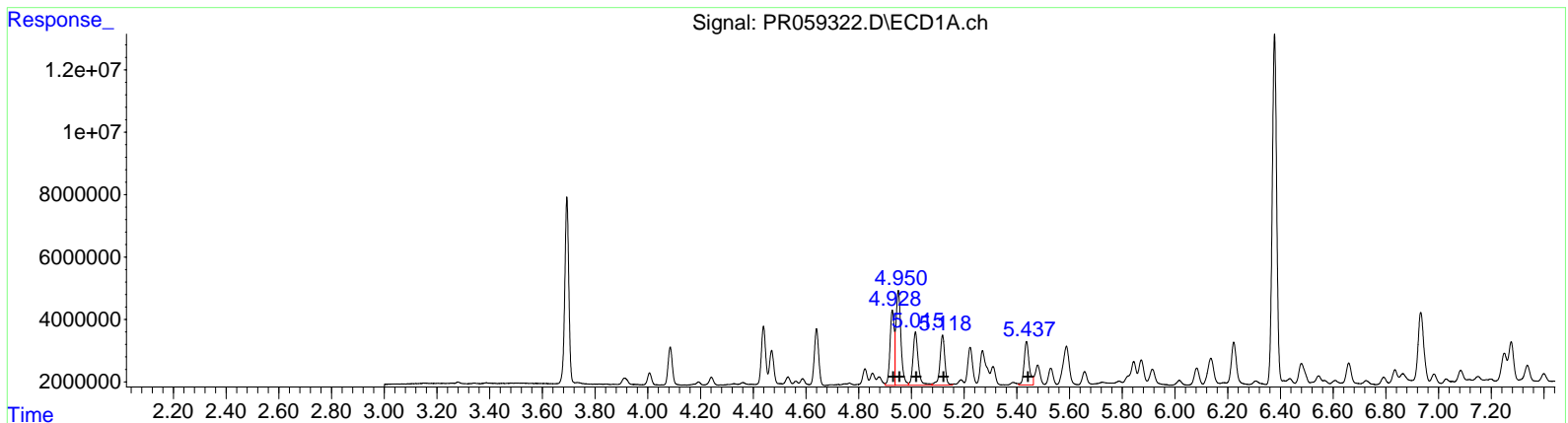
(3) AR-1016-1 #2 (L1)

R.T.	Response	Conc
4.02	41207240	296.79
4.04	63173084	327.89
4.22	31043415	305.78
4.27	24099000	313.78
4.48	28083723	273.29

Data Path : Z:\pestpcbsrv\HPCHEM1\ECD\_R\Data\PR013123\  
 Data File : PR059322.D  
 Signal(s) : Signal #1: ECD1A.ch Signal #2: ECD2B.ch  
 Acq On : 31 Jan 2023 18:39  
 Operator : YP\AJ  
 Sample : 01338-10  
 Misc :  
 ALS Vial : 36 Sample Multiplier: 1

Integration File signal 1: autoint1.e  
 Integration File signal 2: autoint2.e  
 Quant Time: Jan 31 21:17:22 2023  
 Quant Method : Z:\pestpcbsrv\HPCHEM1\ECD\_R\Method\PR012723CLP.M  
 Quant Title : GC EXTRACTABLES  
 QLast Update : Fri Jan 27 08:44:40 2023  
 Response via : Initial Calibration  
 Integrator: ChemStation

Volume Inj. : 1 µl  
 Signal #1 Phase : ZB MR1 Signal #2 Phase: ZB MR2  
 Signal #1 Info : 30Mx0.32mmx 0.5µm Signal #2 Info : 30M x 0.32mm x 0.25µm



(3) AR-1016-1 #2 (L1)

R.T.	Response	Conc
4.93	26641169	307.57
4.95	39883967	335.55
5.02	23472029	306.89
5.12	20662088	332.09
5.44	18612571	302.80

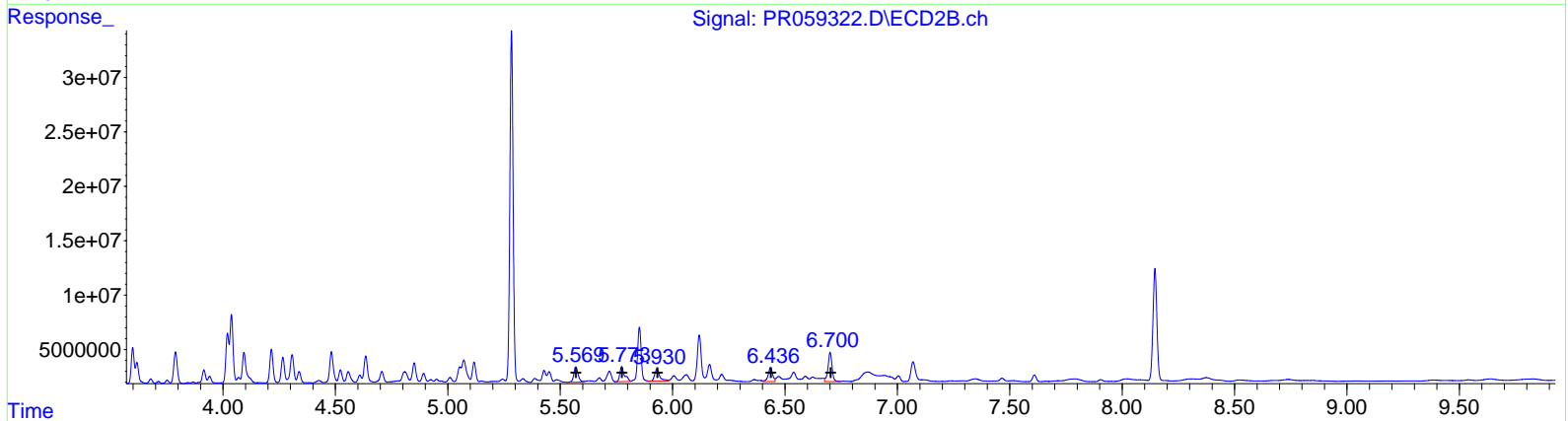
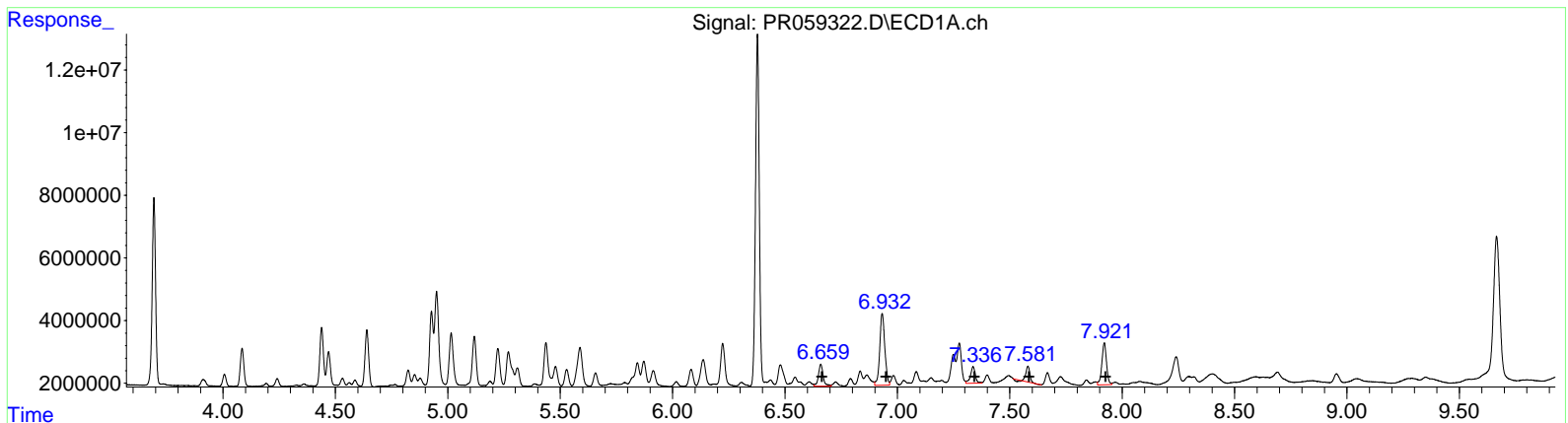
(3) AR-1016-1 #2 (L1)

R.T.	Response	Conc
4.02	41207240	296.79
4.04	63173084	327.89
4.22	31043415	305.78
4.27	24099000	313.78
4.48	29648416	288.51

Data Path : Z:\pestpcbsrv\HPCHEM1\ECD\_R\Data\PR013123\  
 Data File : PR059322.D  
 Signal(s) : Signal #1: ECD1A.ch Signal #2: ECD2B.ch  
 Acq On : 31 Jan 2023 18:39  
 Operator : YP\AJ  
 Sample : 01338-10  
 Misc :  
 ALS Vial : 36 Sample Multiplier: 1

Integration File signal 1: autoint1.e  
 Integration File signal 2: autoint2.e  
 Quant Time: Jan 31 21:17:22 2023  
 Quant Method : Z:\pestpcbsrv\HPCHEM1\ECD\_R\Method\PR012723CLP.M  
 Quant Title : GC EXTRACTABLES  
 QLast Update : Fri Jan 27 08:44:40 2023  
 Response via : Initial Calibration  
 Integrator: ChemStation

Volume Inj. : 1 µl  
 Signal #1 Phase : ZB MR1 Signal #2 Phase: ZB MR2  
 Signal #1 Info : 30Mx0.32mmx 0.5µm Signal #2 Info : 30M x 0.32mm x 0.25µm



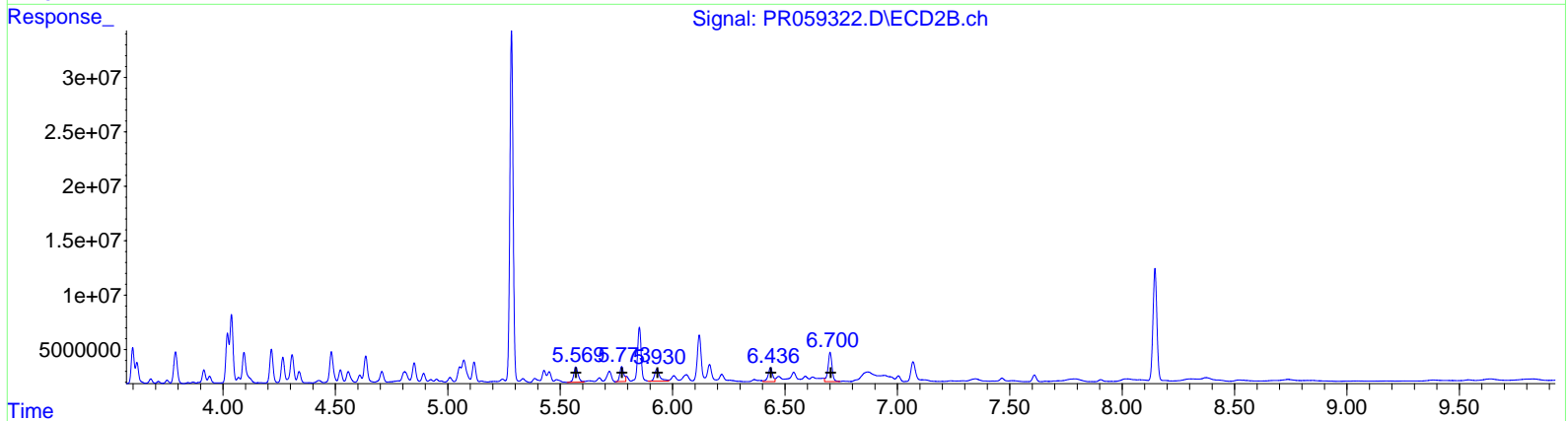
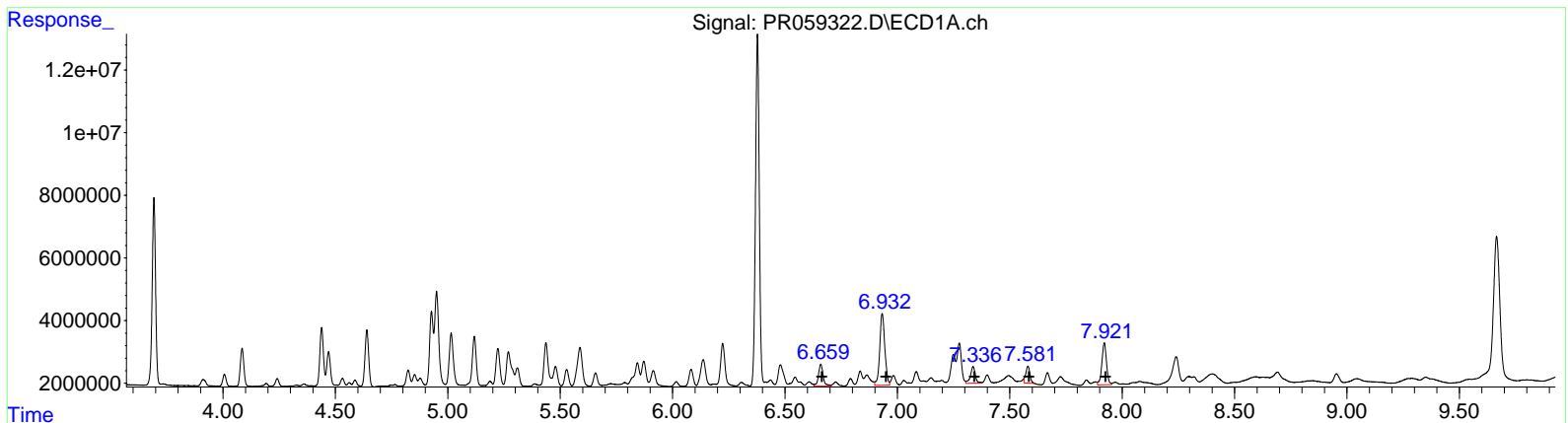
QEdit

(31) AR-1260-1 (L7)		
R.T.	Response	Conc
6.66	10408129	88.89
6.93	36090019	260.08
7.34	7984947	77.32
7.58	5486373	46.84
7.92	19352923	85.16
(31) AR-1260-1 #2 (L7)		
R.T.	Response	Conc
5.57	19143731	89.59
5.77	20194560	78.53
5.93	17906517	75.99
6.44	17816714	92.21
6.70	33591062	74.92

Data Path : Z:\pestpcbsrv\HPCHEM1\ECD\_R\Data\PR013123\  
 Data File : PR059322.D  
 Signal(s) : Signal #1: ECD1A.ch Signal #2: ECD2B.ch  
 Acq On : 31 Jan 2023 18:39  
 Operator : YP\AJ  
 Sample : 01338-10  
 Misc :  
 ALS Vial : 36 Sample Multiplier: 1

Integration File signal 1: autoint1.e  
 Integration File signal 2: autoint2.e  
 Quant Time: Jan 31 21:17:22 2023  
 Quant Method : Z:\pestpcbsrv\HPCHEM1\ECD\_R\Method\PR012723CLP.M  
 Quant Title : GC EXTRACTABLES  
 QLast Update : Fri Jan 27 08:44:40 2023  
 Response via : Initial Calibration  
 Integrator: ChemStation

Volume Inj. : 1 µl  
 Signal #1 Phase : ZB MR1 Signal #2 Phase: ZB MR2  
 Signal #1 Info : 30Mx0.32mmx 0.5µm Signal #2 Info : 30M x 0.32mm x 0.25µm



QEdit

(31) AR-1260-1 #2 (L7)		
R.T.	Response	Conc
6.66	10408129	88.89
6.93	36090019	260.08
7.34	7984947	77.32
7.58	7003564	59.79
7.92	19352923	85.16
(31) AR-1260-1 #2 (L7)		
R.T.	Response	Conc
5.57	19143731	89.59
5.77	16712924	64.99
5.93	17906517	75.99
6.44	17816714	92.21
6.70	33591062	74.92