

Data Path : Z:\pestpcbsrv\HPCHEM1\ECD\_R\Data\PR013124\  
 Data File : PR065340.D  
 Signal(s) : Signal #1: ECD1A.ch Signal #2: ECD2B.ch  
 Acq On : 31 Jan 2024 10:57  
 Operator : AJ\MA  
 Sample : AR1660CCC500  
 Misc :  
 ALS Vial : 3 Sample Multiplier: 1

Instrument :  
 ECD\_R  
 ClientSampleId :  
 AR1660CCC500

Integration File signal 1: autoint1.e  
 Integration File signal 2: autoint2.e  
 Quant Time: Jan 31 19:12:52 2024  
 Quant Method : Z:\pestpcbsrv\HPCHEM1\ECD\_R\Method\PR011924.M  
 Quant Title : GC EXTRACTABLES  
 QLast Update : Fri Jan 19 20:49:45 2024  
 Response via : Initial Calibration  
 Integrator: ChemStation

Volume Inj. : 2 µl  
 Signal #1 Phase : ZB-MR1 Signal #2 Phase: ZB-MR2  
 Signal #1 Info : 30Mx0.32mmx 0.50µ Signal #2 Info : 30M x 0.32mm x 0.25µm

Compound	RT#1	RT#2	Resp#1	Resp#2	ng/ml	ng/ml
System Monitoring Compounds						
1) SA Tetrachlo...	3.700	3.002	316.6E6	291.3E6	53.030	53.254
2) SA Decachlor...	9.740	8.373	226.9E6	262.1E6	56.738	55.386
Target Compounds						
3) L1 AR-1016-1	4.941	4.147	92418785	95098019	521.404	523.653
4) L1 AR-1016-2	4.964	4.165	140.0E6	131.7E6	537.024	532.552
5) L1 AR-1016-3	5.029	4.349	89109468	72916638	533.159	537.773
6) L1 AR-1016-4	5.133	4.401	71771382	55561187	535.250	530.536
7) L1 AR-1016-5	5.453	4.623	71007221	73203433	525.884	524.727
8) L2 AR-1221-1	3.922	3.231	11288638	9109735	157.282	147.107
9) L2 AR-1221-2	4.015	3.319	15361151	14572069	293.018	305.525
10) L2 AR-1221-3	4.094	3.399	55709846	48661205	362.602	352.284
11) L3 AR-1232-1	4.094	3.399	55709846	48661205	412.160	406.315
12) L3 AR-1232-2	4.651	4.165	76588737	131.7E6	994.145	1077.723
13) L3 AR-1232-3	4.964	4.349	140.0E6	72916638	1097.916	1096.181
14) L3 AR-1232-4	5.133	4.443	71771382	67217802	1094.967	1173.903
15) L3 AR-1232-5	5.239	4.623	58336291	73203433	1206.127	1148.434
16) L4 AR-1242-1	4.941	4.147	92418785	95098019	646.496	650.735
17) L4 AR-1242-2	4.964	4.165	140.0E6	131.7E6	664.814	660.064
18) L4 AR-1242-3	5.029	4.349	89109468	72916638	657.975	665.919
19) L4 AR-1242-4	5.133	4.443	71771382	67217802	660.502	640.263
20) L4 AR-1242-5	5.934	5.002	20628459	73994839	182.362	548.020 #
21) L5 AR-1248-1	4.941	4.147	92418785	95098019	868.630	880.366
22) L5 AR-1248-2	5.239	4.401	58336291	55561187	375.439	383.645
23) L5 AR-1248-3	5.453	4.443	71007221	67217802	397.668	434.382
24) L5 AR-1248-4	5.893	4.623	22863651	73203433	120.597	390.901 #
25) L5 AR-1248-5	5.934	5.045	20628459	19846578	108.258	106.629
26) L6 AR-1254-1	5.864	5.002	62839079	73994839	306.810	253.940
27) L6 AR-1254-2	6.105	5.164	54395501	53819727	174.524	212.451
28) L6 AR-1254-3	6.501	5.614	25974682	99964019	81.194	244.320 #
29) L6 AR-1254-4	6.816	5.846	16447525	9173501	71.776	35.733 #
30) L6 AR-1254-5	7.278	6.298	168.0E6	195.0E6	675.837	532.012
31) L7 AR-1260-1	6.685	5.737	132.7E6	149.6E6	527.720	524.039
32) L7 AR-1260-2	6.973	5.945	150.1E6	180.6E6	522.115	520.865
33) L7 AR-1260-3	7.368	6.107	113.0E6	169.3E6	534.622	521.231
34) L7 AR-1260-4	7.613	6.622	126.4E6	138.6E6	535.825	524.678
35) L7 AR-1260-5	7.958	6.890	236.8E6	328.5E6	538.630	532.666
36) L8 AR-1262-1	7.368	6.400	113.0E6	71684771	333.916	399.644
37) L8 AR-1262-2	7.958	6.622	236.8E6	138.6E6	418.688	356.251
38) L8 AR-1262-3	8.278	7.200	148.9E6	70389149	391.177	248.339 #
39) L8 AR-1262-4	8.361	7.268	46434714	237.5E6	158.518	412.456 #
40) L8 AR-1262-5	9.011	7.815	66189269	81900662	330.295	314.673
41) L9 AR-1268-1	8.278	7.200	148.9E6	70389149	245.525	88.727 #

Data Path : Z:\pestpcbsrv\HPCHEM1\ECD\_R\Data\PR013124\  
 Data File : PR065340.D  
 Signal(s) : Signal #1: ECD1A.ch Signal #2: ECD2B.ch  
 Acq On : 31 Jan 2024 10:57  
 Operator : AJ\MA  
 Sample : AR1660CCC500  
 Misc :  
 ALS Vial : 3 Sample Multiplier: 1

Instrument :  
 ECD\_R  
 ClientSampleId :  
 AR1660CCC500

Integration File signal 1: autoint1.e  
 Integration File signal 2: autoint2.e  
 Quant Time: Jan 31 19:12:52 2024  
 Quant Method : Z:\pestpcbsrv\HPCHEM1\ECD\_R\Method\PR011924.M  
 Quant Title : GC EXTRACTABLES  
 QLast Update : Fri Jan 19 20:49:45 2024  
 Response via : Initial Calibration  
 Integrator: ChemStation

Volume Inj. : 2 µl  
 Signal #1 Phase : ZB-MR1 Signal #2 Phase: ZB-MR2  
 Signal #1 Info : 30Mx0.32mmx 0.50µ Signal #2 Info : 30M x 0.32mm x 0.25µm

	Compound	RT#1	RT#2	Resp#1	Resp#2	ng/ml	ng/ml
42)	L9 AR-1268-2	8.361	7.268	46434714	237.5E6	84.863	319.056 #
43)	L9 AR-1268-3	8.588	7.496	3190277	4775518	6.724	7.538
44)	L9 AR-1268-4	9.011	7.815	66189269	81900662	325.283	312.230
45)	L9 AR-1268-5	9.415	8.115	19081164	22434588	13.090	11.718

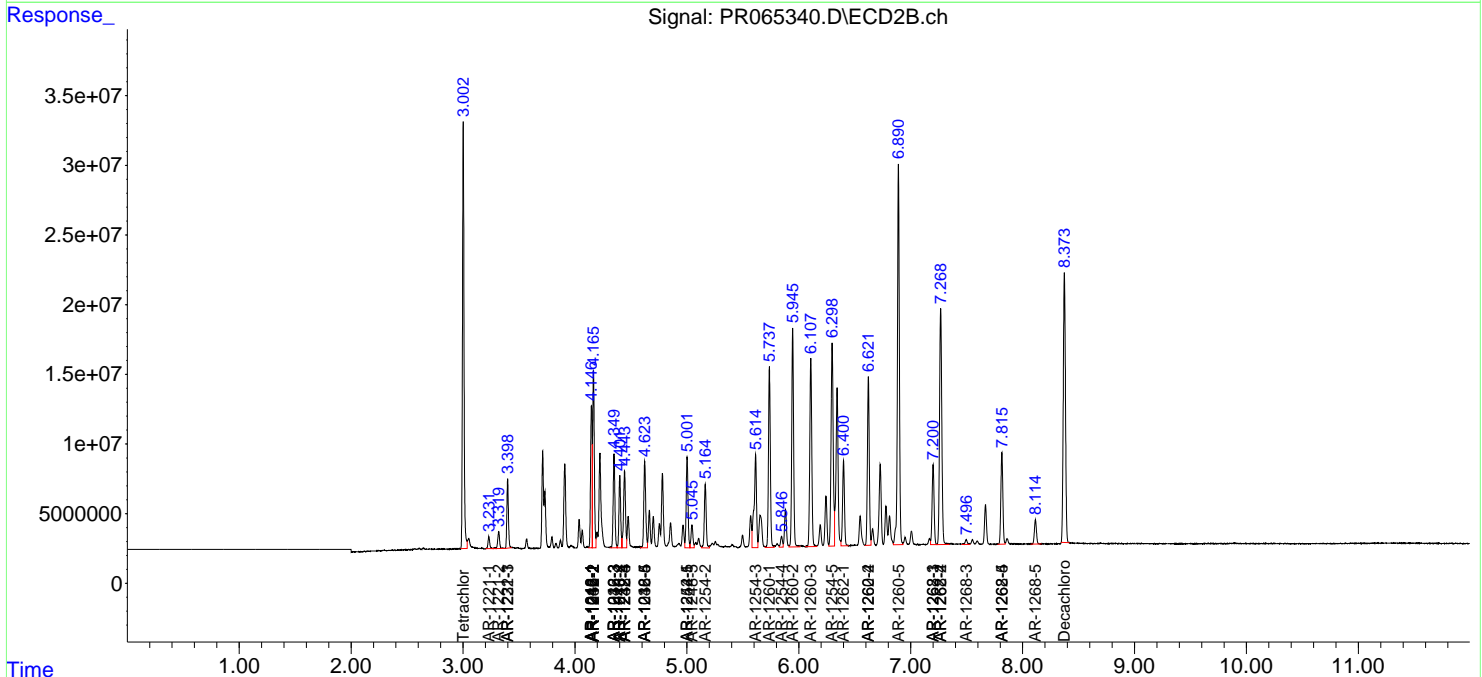
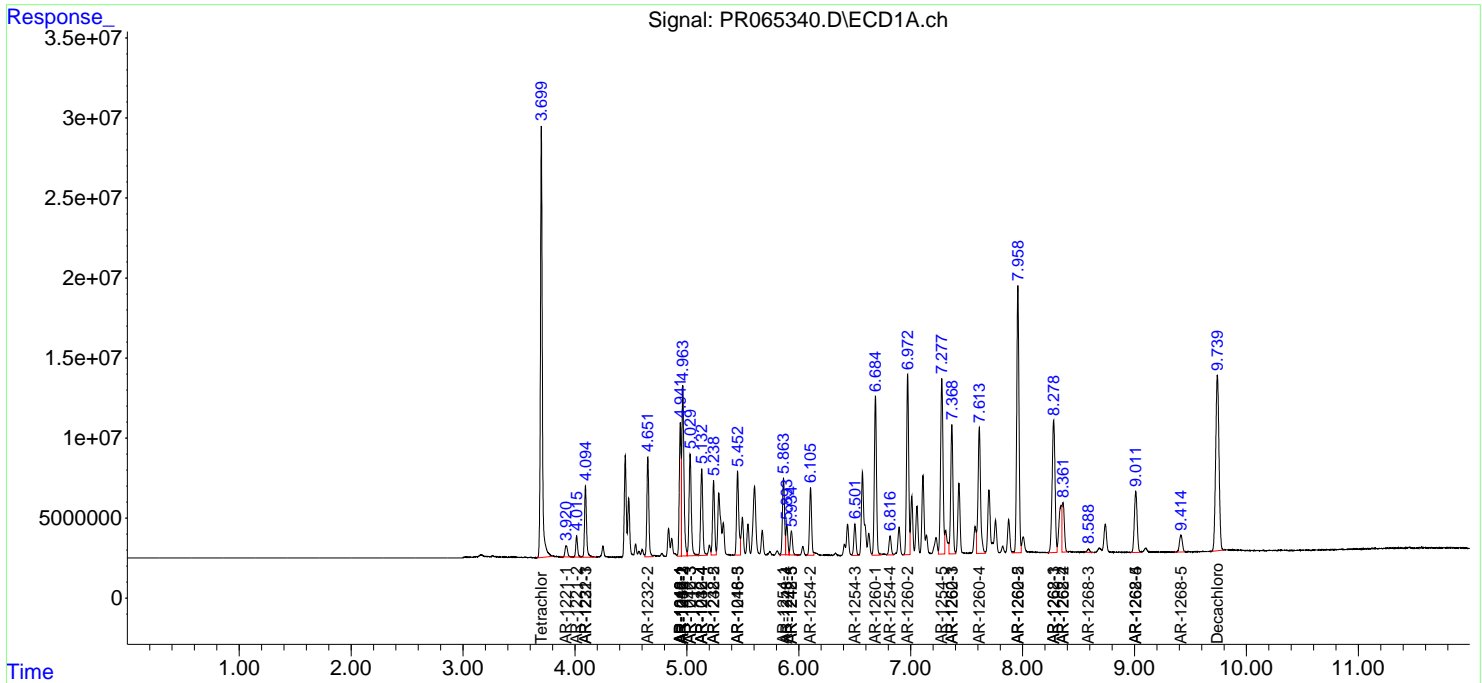
(f)=RT Delta > 1/2 Window (#)=Amounts differ by > 25% (m)=manual int.

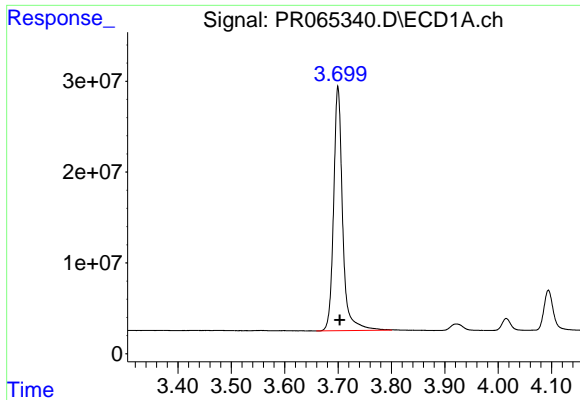
Data Path : Z:\pestpcbsrv\HPCHEM1\ECD\_R\Data\PR013124\  
 Data File : PR065340.D  
 Signal(s) : Signal #1: ECD1A.ch Signal #2: ECD2B.ch  
 Acq On : 31 Jan 2024 10:57  
 Operator : AJ\MA  
 Sample : AR1660CCC500  
 Misc :  
 ALS Vial : 3 Sample Multiplier: 1

**Instrument :**  
 ECD\_R  
**ClientSampleId :**  
 AR1660CCC500

Integration File signal 1: autoint1.e  
 Integration File signal 2: autoint2.e  
 Quant Time: Jan 31 19:12:52 2024  
 Quant Method : Z:\pestpcbsrv\HPCHEM1\ECD\_R\Method\PR011924.M  
 Quant Title : GC EXTRACTABLES  
 QLast Update : Fri Jan 19 20:49:45 2024  
 Response via : Initial Calibration  
 Integrator: ChemStation

Volume Inj. : 2 µl  
 Signal #1 Phase : ZB-MR1 Signal #2 Phase: ZB-MR2  
 Signal #1 Info : 30Mx0.32mmx 0.50µ Signal #2 Info : 30M x 0.32mm x 0.25µm

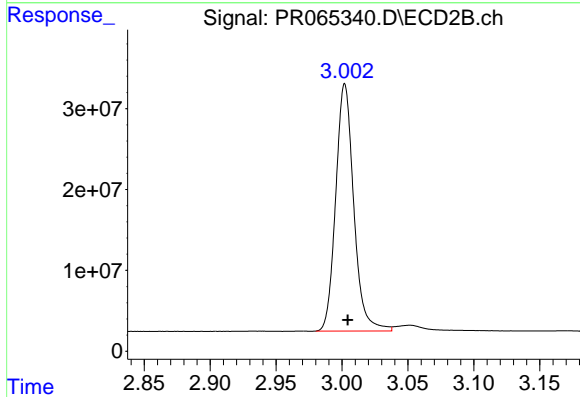




#1 Tetrachloro-m-xylene

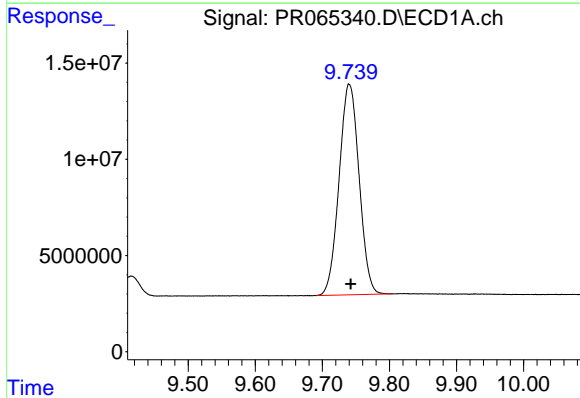
R.T.: 3.700 min  
 Delta R.T.: -0.003 min  
 Response: 316550074  
 Conc: 53.03 ng/ml

Instrument :  
 ECD\_R  
 ClientSampleId :  
 AR1660CCC500



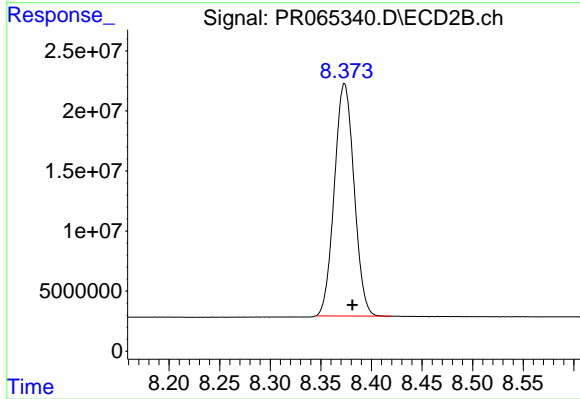
#1 Tetrachloro-m-xylene

R.T.: 3.002 min  
 Delta R.T.: -0.002 min  
 Response: 291287318  
 Conc: 53.25 ng/ml



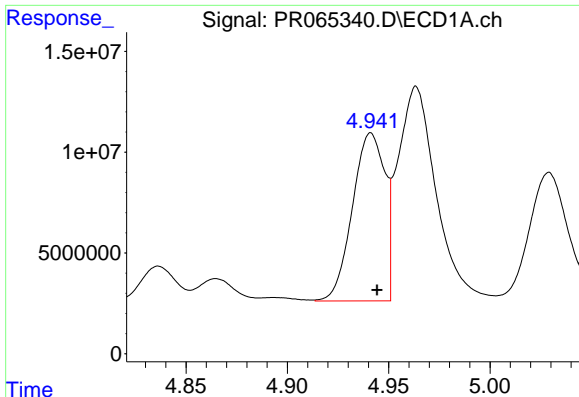
#2 Decachlorobiphenyl

R.T.: 9.740 min  
 Delta R.T.: -0.002 min  
 Response: 226921931  
 Conc: 56.74 ng/ml



#2 Decachlorobiphenyl

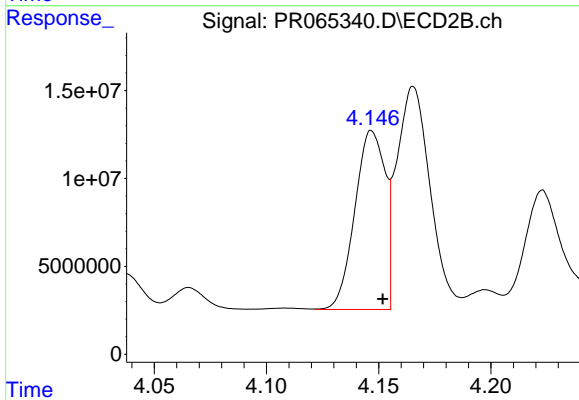
R.T.: 8.373 min  
 Delta R.T.: -0.008 min  
 Response: 262125500  
 Conc: 55.39 ng/ml



#3 AR-1016-1

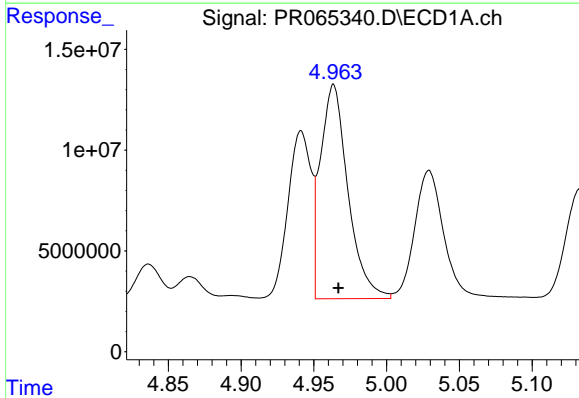
R.T.: 4.941 min  
 Delta R.T.: -0.003 min  
 Response: 92418785  
 Conc: 521.40 ng/ml

Instrument :  
 ECD\_R  
 ClientSampleId :  
 AR1660CCC500



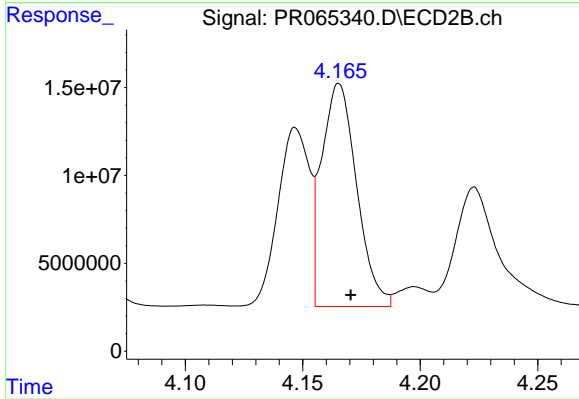
#3 AR-1016-1

R.T.: 4.147 min  
 Delta R.T.: -0.005 min  
 Response: 95098019  
 Conc: 523.65 ng/ml



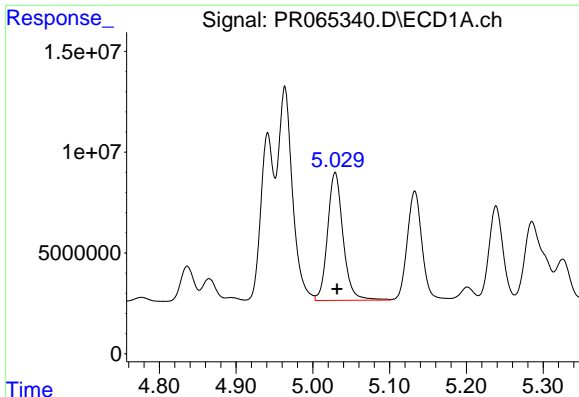
#4 AR-1016-2

R.T.: 4.964 min  
 Delta R.T.: -0.003 min  
 Response: 140003276  
 Conc: 537.02 ng/ml



#4 AR-1016-2

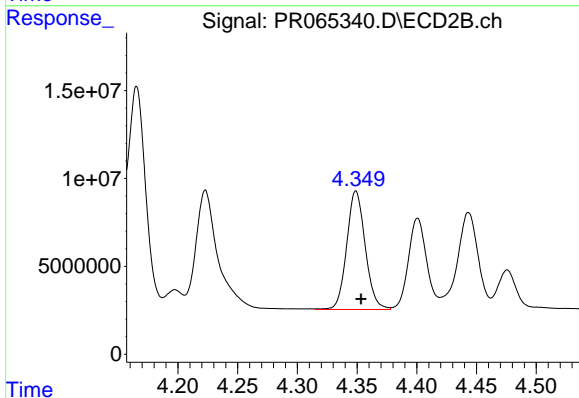
R.T.: 4.165 min  
 Delta R.T.: -0.005 min  
 Response: 131669299  
 Conc: 532.55 ng/ml



#5 AR-1016-3

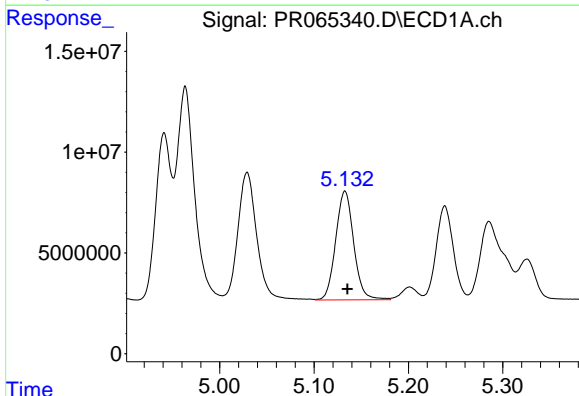
R.T.: 5.029 min  
 Delta R.T.: -0.003 min  
 Response: 89109468  
 Conc: 533.16 ng/ml

Instrument :  
 ECD\_R  
 ClientSampleId :  
 AR1660CCC500



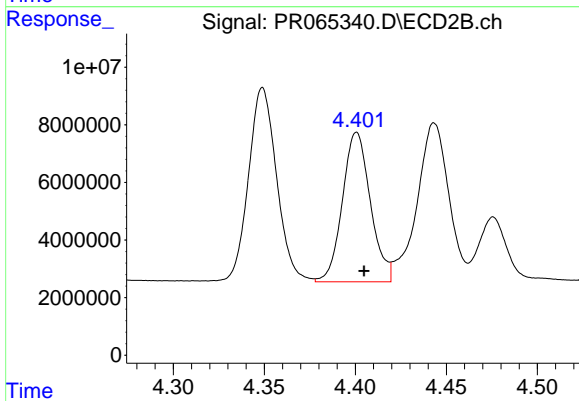
#5 AR-1016-3

R.T.: 4.349 min  
 Delta R.T.: -0.004 min  
 Response: 72916638  
 Conc: 537.77 ng/ml



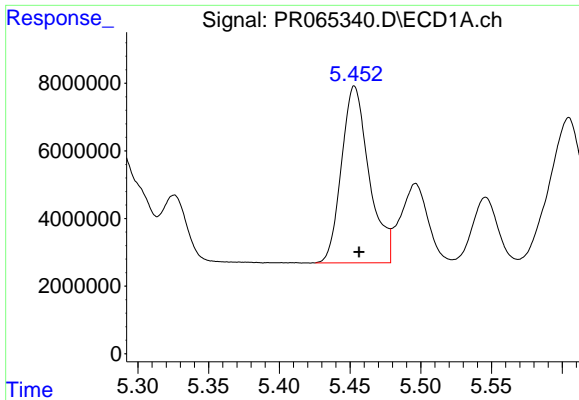
#6 AR-1016-4

R.T.: 5.133 min  
 Delta R.T.: -0.003 min  
 Response: 71771382  
 Conc: 535.25 ng/ml



#6 AR-1016-4

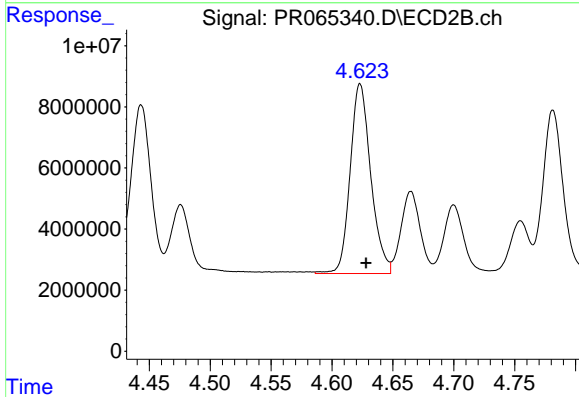
R.T.: 4.401 min  
 Delta R.T.: -0.004 min  
 Response: 55561187  
 Conc: 530.54 ng/ml



#7 AR-1016-5

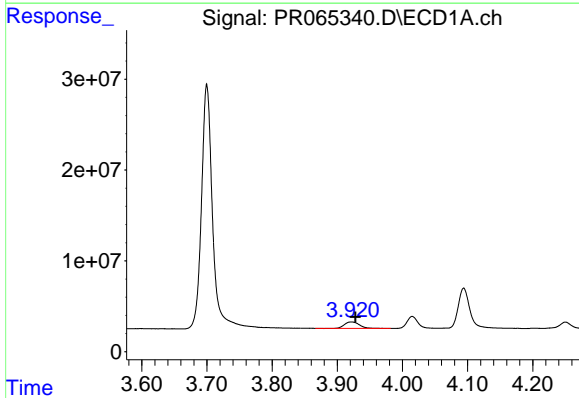
R.T.: 5.453 min  
 Delta R.T.: -0.003 min  
 Response: 71007221  
 Conc: 525.88 ng/ml

Instrument :  
 ECD\_R  
 ClientSampleId :  
 AR1660CCC500



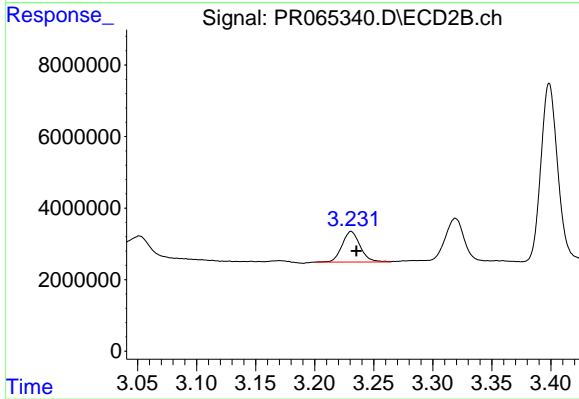
#7 AR-1016-5

R.T.: 4.623 min  
 Delta R.T.: -0.005 min  
 Response: 73203433  
 Conc: 524.73 ng/ml



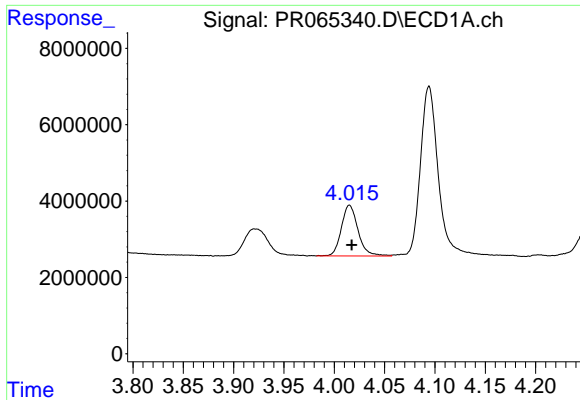
#8 AR-1221-1

R.T.: 3.922 min  
 Delta R.T.: -0.006 min  
 Response: 11288638  
 Conc: 157.28 ng/ml



#8 AR-1221-1

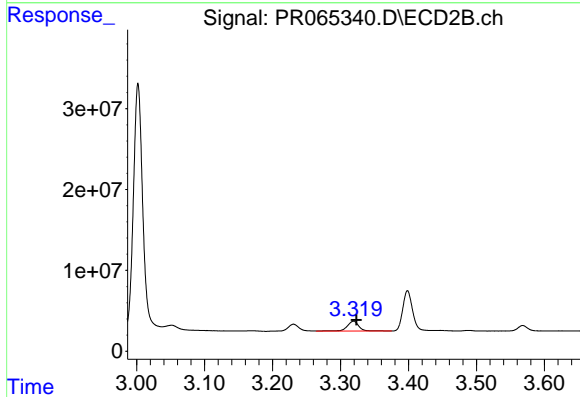
R.T.: 3.231 min  
 Delta R.T.: -0.004 min  
 Response: 9109735  
 Conc: 147.11 ng/ml



#9 AR-1221-2

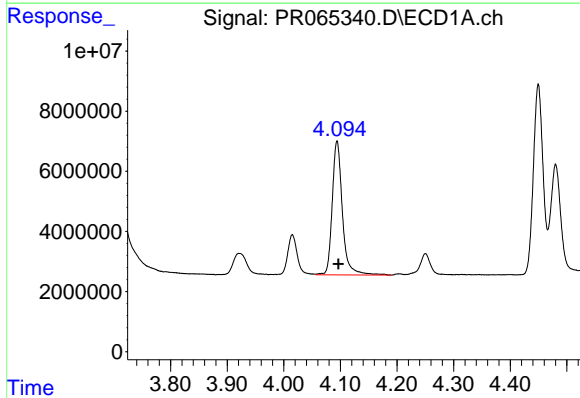
R.T.: 4.015 min  
 Delta R.T.: -0.002 min  
 Response: 15361151  
 Conc: 293.02 ng/ml

Instrument :  
 ECD\_R  
 ClientSampleId :  
 AR1660CCC500



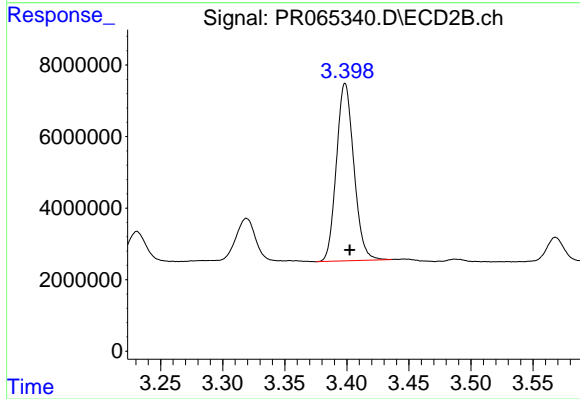
#9 AR-1221-2

R.T.: 3.319 min  
 Delta R.T.: -0.004 min  
 Response: 14572069  
 Conc: 305.53 ng/ml



#10 AR-1221-3

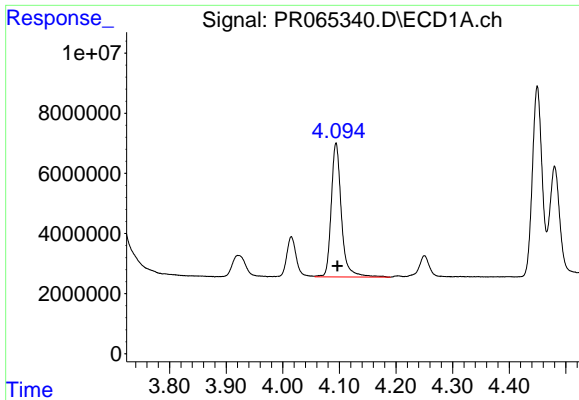
R.T.: 4.094 min  
 Delta R.T.: -0.003 min  
 Response: 55709846  
 Conc: 362.60 ng/ml



#10 AR-1221-3

R.T.: 3.399 min  
 Delta R.T.: -0.004 min  
 Response: 48661205  
 Conc: 352.28 ng/ml

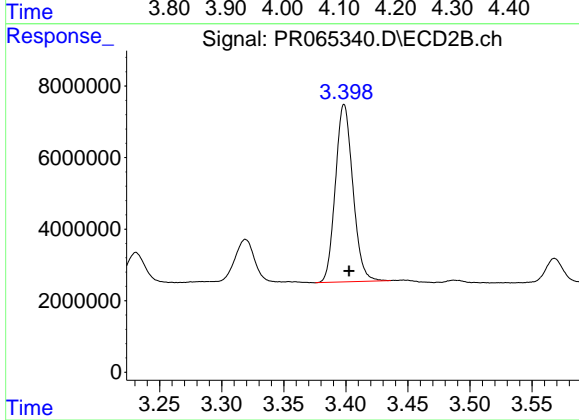




#11 AR-1232-1

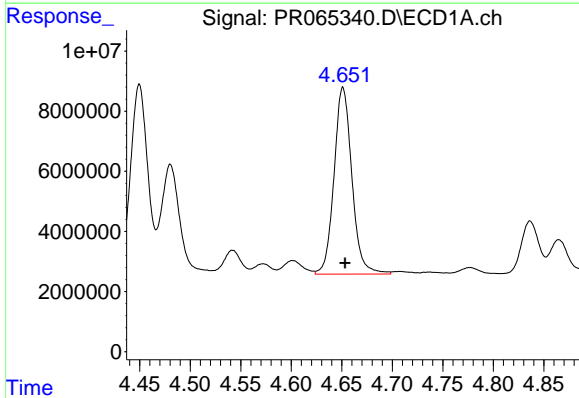
R.T.: 4.094 min  
Delta R.T.: -0.002 min  
Response: 55709846  
Conc: 412.16 ng/ml

Instrument :  
ECD\_R  
ClientSampleId :  
AR1660CCC500



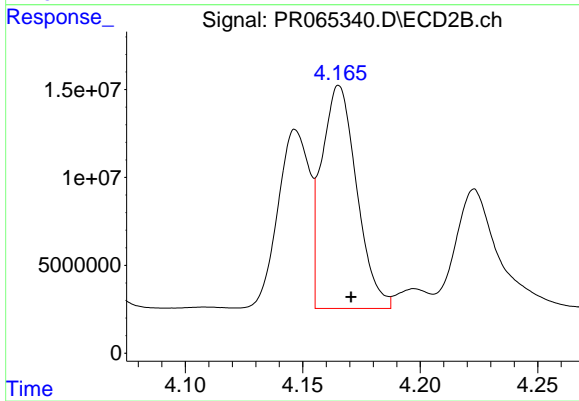
#11 AR-1232-1

R.T.: 3.399 min  
Delta R.T.: -0.004 min  
Response: 48661205  
Conc: 406.31 ng/ml



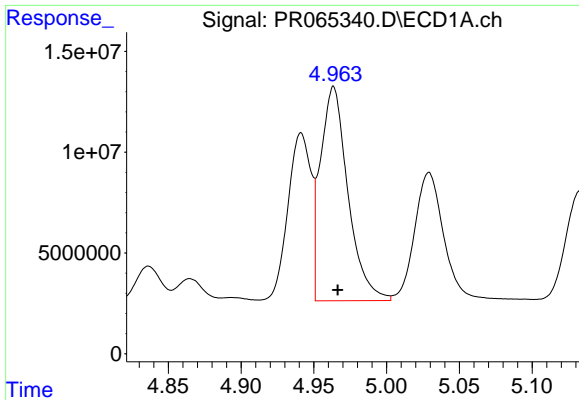
#12 AR-1232-2

R.T.: 4.651 min  
Delta R.T.: -0.002 min  
Response: 76588737  
Conc: 994.14 ng/ml



#12 AR-1232-2

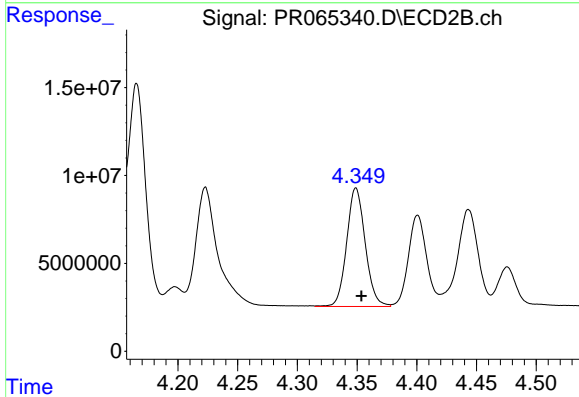
R.T.: 4.165 min  
Delta R.T.: -0.005 min  
Response: 131669299  
Conc: 1077.72 ng/ml



#13 AR-1232-3

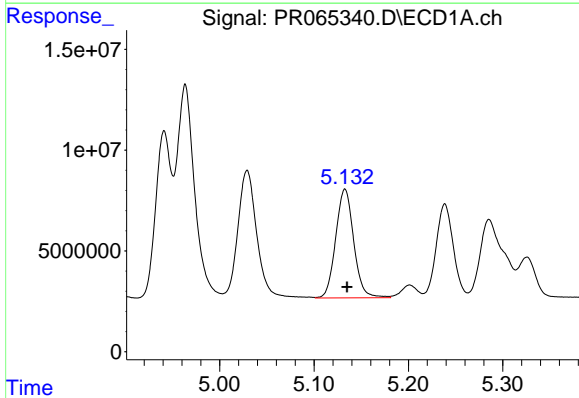
R.T.: 4.964 min  
Delta R.T.: -0.003 min  
Response: 140003276  
Conc: 1097.92 ng/ml

Instrument :  
ECD\_R  
ClientSampleId :  
AR1660CCC500



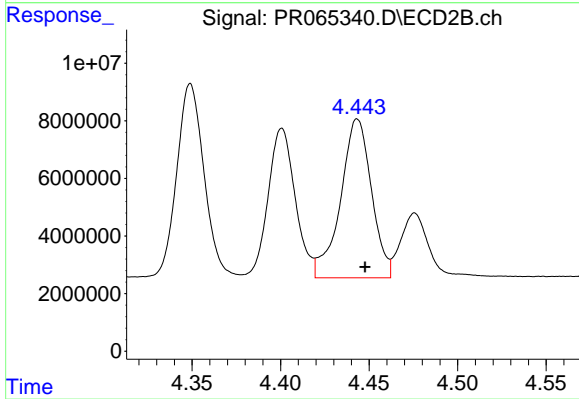
#13 AR-1232-3

R.T.: 4.349 min  
Delta R.T.: -0.005 min  
Response: 72916638  
Conc: 1096.18 ng/ml



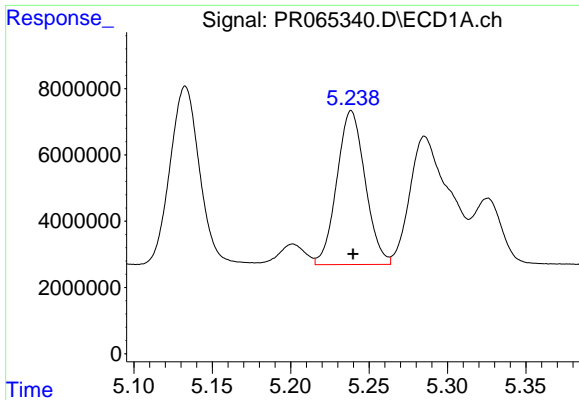
#14 AR-1232-4

R.T.: 5.133 min  
Delta R.T.: -0.002 min  
Response: 71771382  
Conc: 1094.97 ng/ml



#14 AR-1232-4

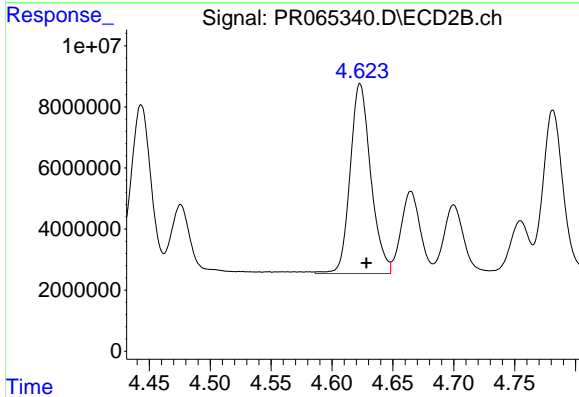
R.T.: 4.443 min  
Delta R.T.: -0.004 min  
Response: 67217802  
Conc: 1173.90 ng/ml



#15 AR-1232-5

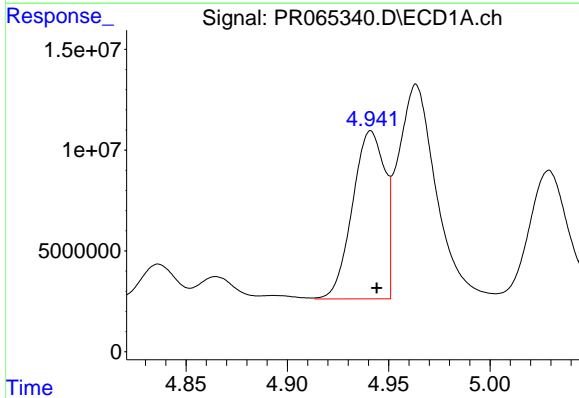
R.T.: 5.239 min  
 Delta R.T.: -0.001 min  
 Response: 58336291  
 Conc: 1206.13 ng/ml

Instrument :  
 ECD\_R  
 ClientSampleId :  
 AR1660CCC500



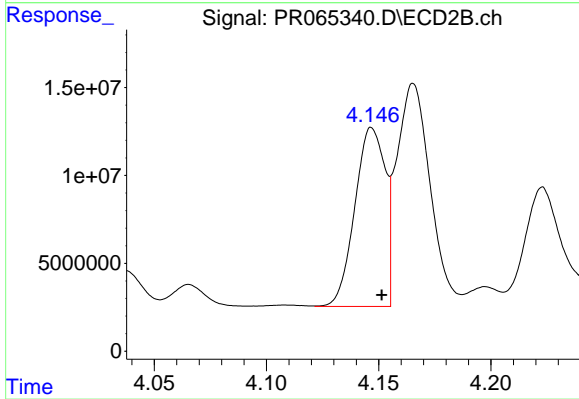
#15 AR-1232-5

R.T.: 4.623 min  
 Delta R.T.: -0.005 min  
 Response: 73203433  
 Conc: 1148.43 ng/ml



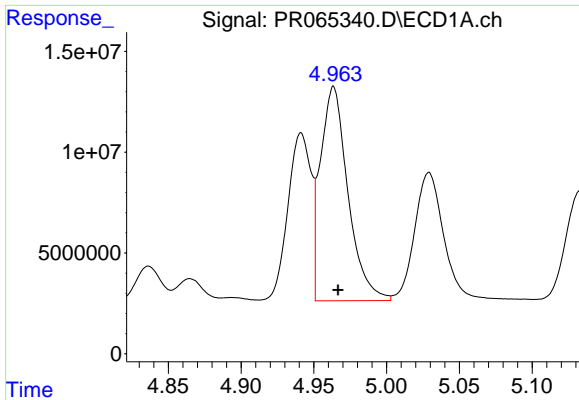
#16 AR-1242-1

R.T.: 4.941 min  
 Delta R.T.: -0.003 min  
 Response: 92418785  
 Conc: 646.50 ng/ml



#16 AR-1242-1

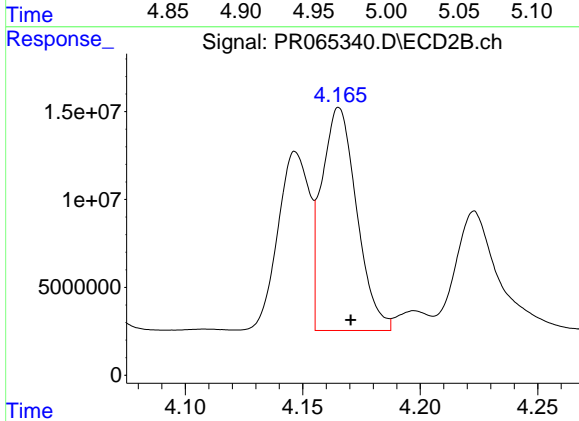
R.T.: 4.147 min  
 Delta R.T.: -0.004 min  
 Response: 95098019  
 Conc: 650.73 ng/ml



#17 AR-1242-2

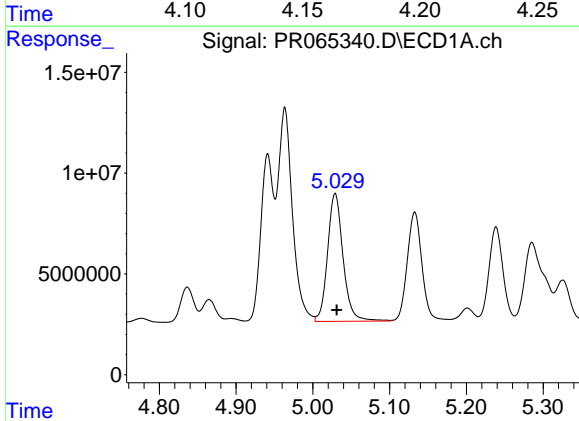
R.T.: 4.964 min  
 Delta R.T.: -0.003 min  
 Response: 140003276  
 Conc: 664.81 ng/ml

Instrument :  
 ECD\_R  
 ClientSampleId :  
 AR1660CCC500



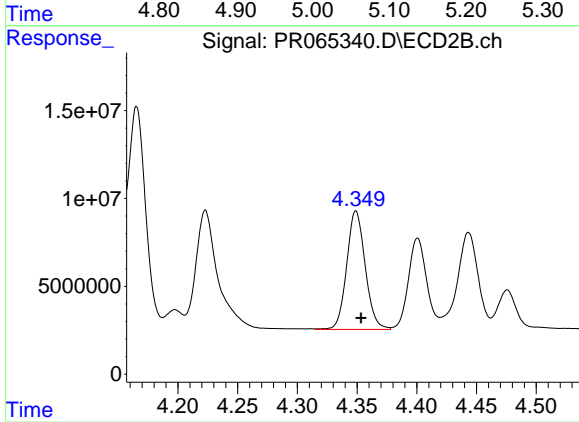
#17 AR-1242-2

R.T.: 4.165 min  
 Delta R.T.: -0.005 min  
 Response: 131669299  
 Conc: 660.06 ng/ml



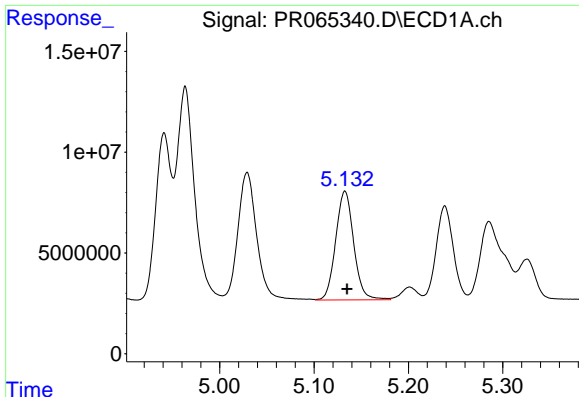
#18 AR-1242-3

R.T.: 5.029 min  
 Delta R.T.: -0.002 min  
 Response: 89109468  
 Conc: 657.97 ng/ml



#18 AR-1242-3

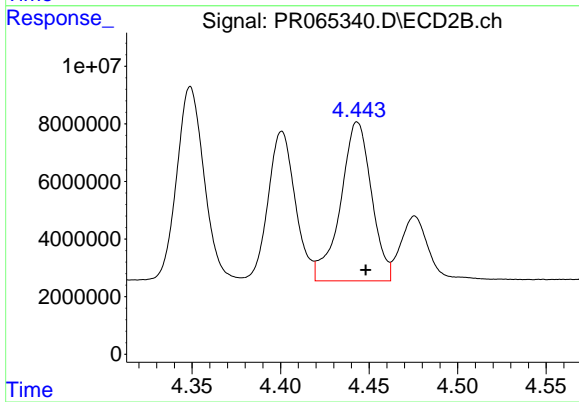
R.T.: 4.349 min  
 Delta R.T.: -0.004 min  
 Response: 72916638  
 Conc: 665.92 ng/ml



#19 AR-1242-4

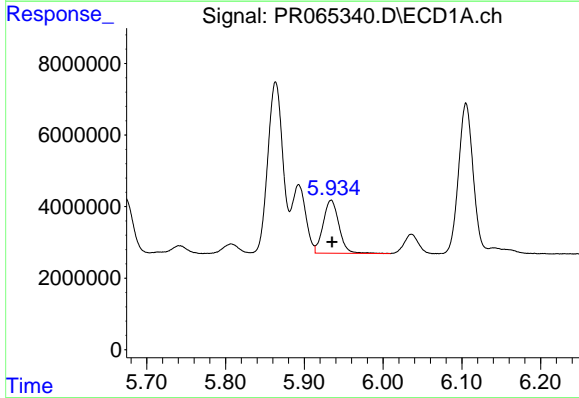
R.T.: 5.133 min  
 Delta R.T.: -0.002 min  
 Response: 71771382  
 Conc: 660.50 ng/ml

Instrument :  
 ECD\_R  
 ClientSampleId :  
 AR1660CCC500



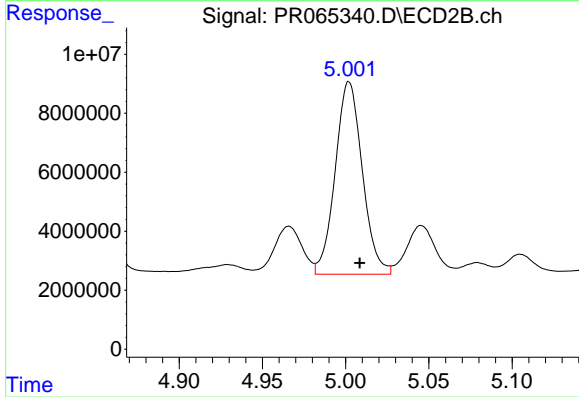
#19 AR-1242-4

R.T.: 4.443 min  
 Delta R.T.: -0.005 min  
 Response: 67217802  
 Conc: 640.26 ng/ml



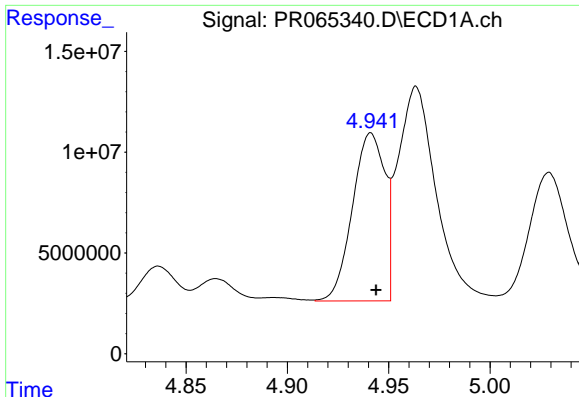
#20 AR-1242-5

R.T.: 5.934 min  
 Delta R.T.: -0.001 min  
 Response: 20628459  
 Conc: 182.36 ng/ml



#20 AR-1242-5

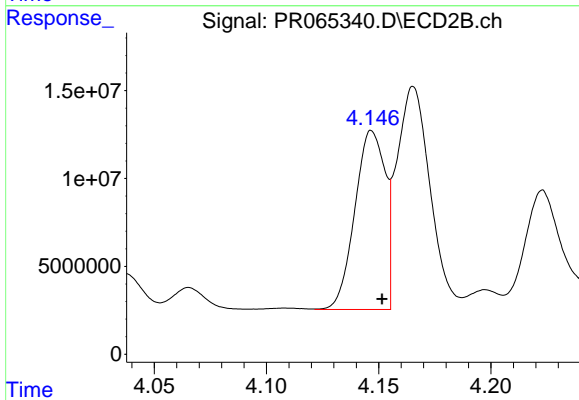
R.T.: 5.002 min  
 Delta R.T.: -0.006 min  
 Response: 73994839  
 Conc: 548.02 ng/ml



#21 AR-1248-1

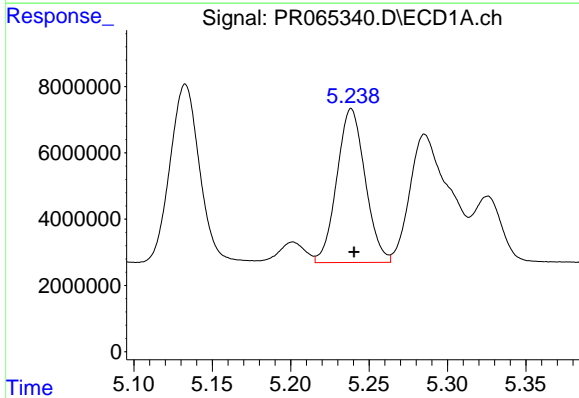
R.T.: 4.941 min  
 Delta R.T.: -0.003 min  
 Response: 92418785  
 Conc: 868.63 ng/ml

Instrument :  
 ECD\_R  
 ClientSampleId :  
 AR1660CCC500



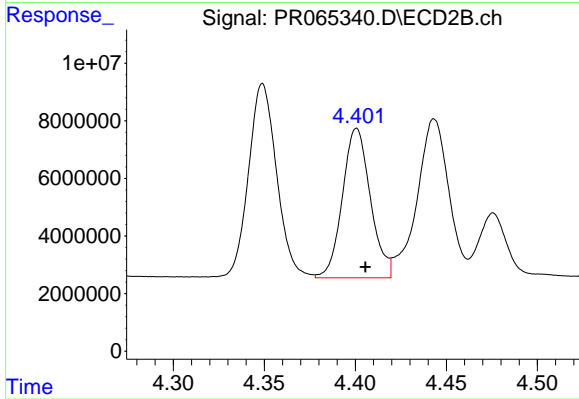
#21 AR-1248-1

R.T.: 4.147 min  
 Delta R.T.: -0.005 min  
 Response: 95098019  
 Conc: 880.37 ng/ml



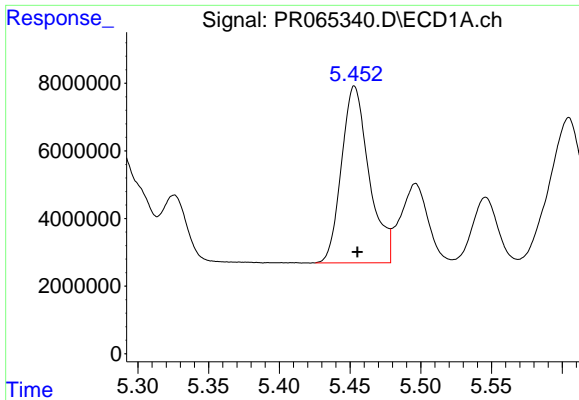
#22 AR-1248-2

R.T.: 5.239 min  
 Delta R.T.: -0.002 min  
 Response: 58336291  
 Conc: 375.44 ng/ml



#22 AR-1248-2

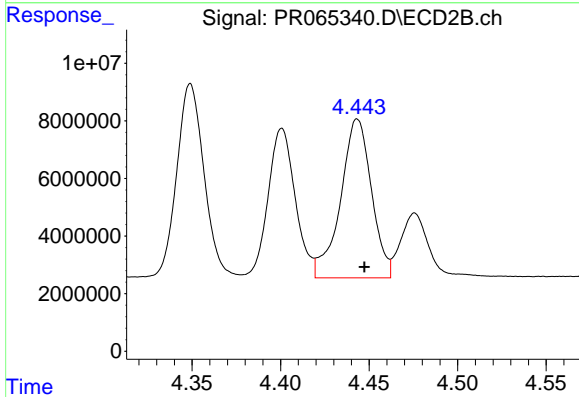
R.T.: 4.401 min  
 Delta R.T.: -0.005 min  
 Response: 55561187  
 Conc: 383.64 ng/ml



#23 AR-1248-3

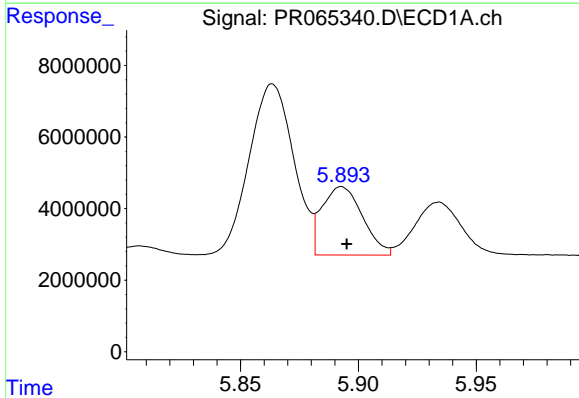
R.T.: 5.453 min  
 Delta R.T.: -0.002 min  
 Response: 71007221  
 Conc: 397.67 ng/ml

Instrument :  
 ECD\_R  
 ClientSampleId :  
 AR1660CCC500



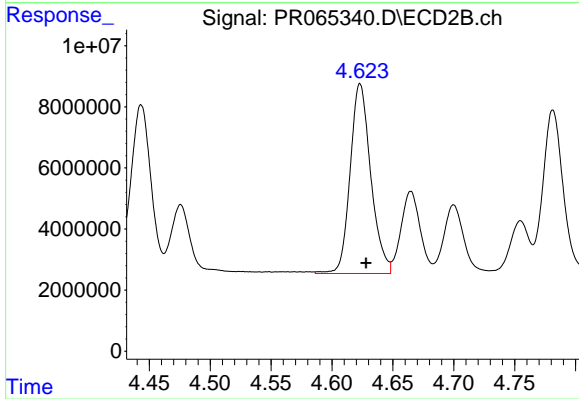
#23 AR-1248-3

R.T.: 4.443 min  
 Delta R.T.: -0.004 min  
 Response: 67217802  
 Conc: 434.38 ng/ml



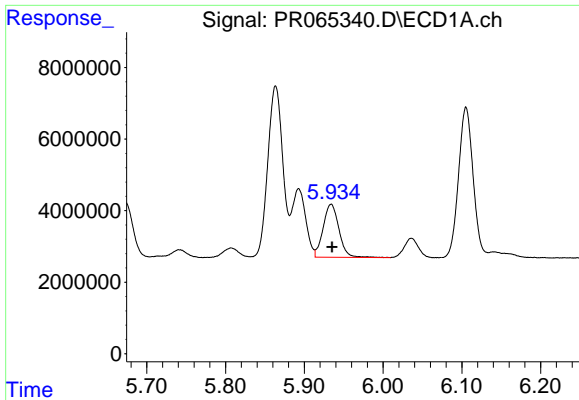
#24 AR-1248-4

R.T.: 5.893 min  
 Delta R.T.: -0.002 min  
 Response: 22863651  
 Conc: 120.60 ng/ml



#24 AR-1248-4

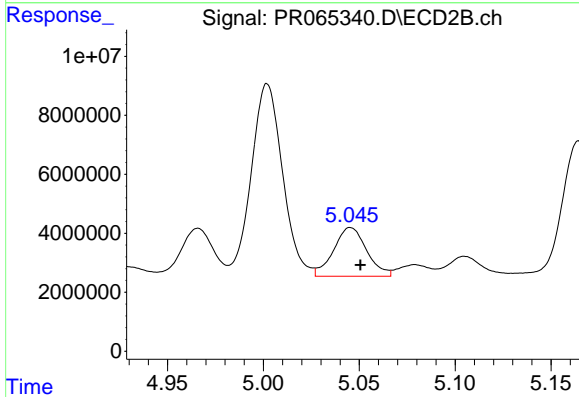
R.T.: 4.623 min  
 Delta R.T.: -0.005 min  
 Response: 73203433  
 Conc: 390.90 ng/ml



#25 AR-1248-5

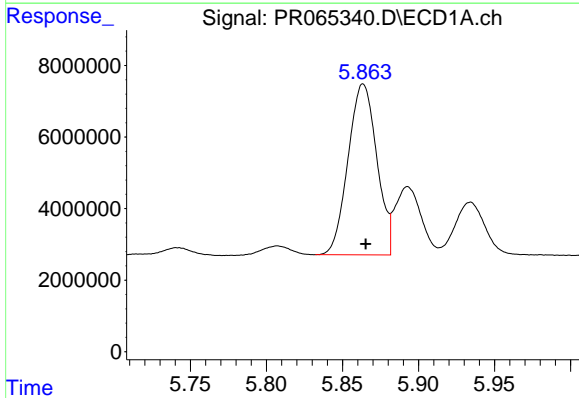
R.T.: 5.934 min  
 Delta R.T.: -0.001 min  
 Response: 20628459  
 Conc: 108.26 ng/ml

Instrument :  
 ECD\_R  
 ClientSampleId :  
 AR1660CCC500



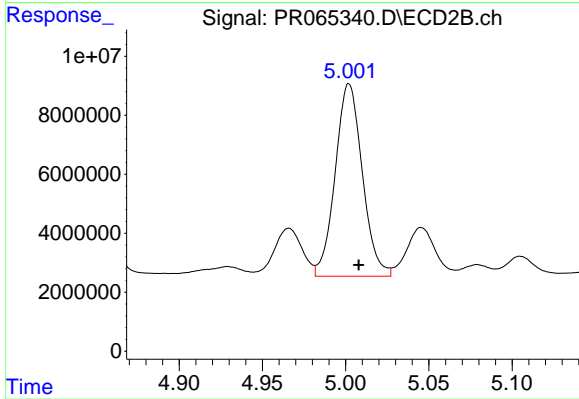
#25 AR-1248-5

R.T.: 5.045 min  
 Delta R.T.: -0.005 min  
 Response: 19846578  
 Conc: 106.63 ng/ml



#26 AR-1254-1

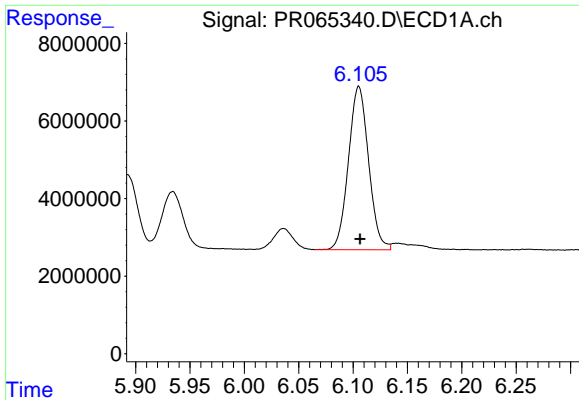
R.T.: 5.864 min  
 Delta R.T.: -0.002 min  
 Response: 62839079  
 Conc: 306.81 ng/ml



#26 AR-1254-1

R.T.: 5.002 min  
 Delta R.T.: -0.006 min  
 Response: 73994839  
 Conc: 253.94 ng/ml

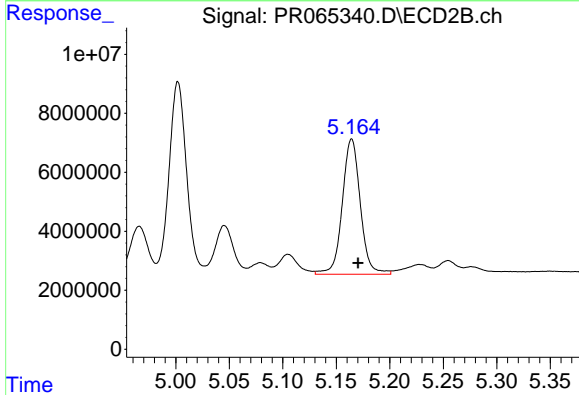




#27 AR-1254-2

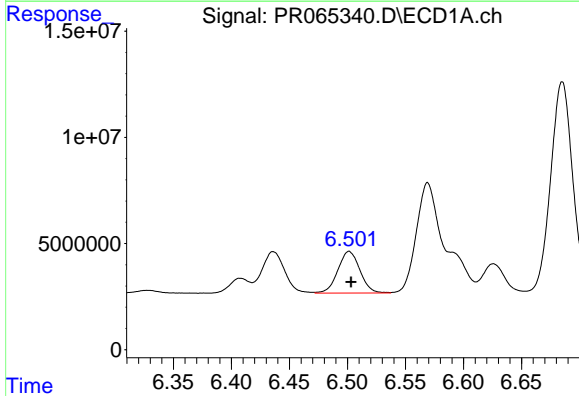
R.T.: 6.105 min  
 Delta R.T.: -0.001 min  
 Response: 54395501  
 Conc: 174.52 ng/ml

Instrument :  
 ECD\_R  
 ClientSampleId :  
 AR1660CCC500



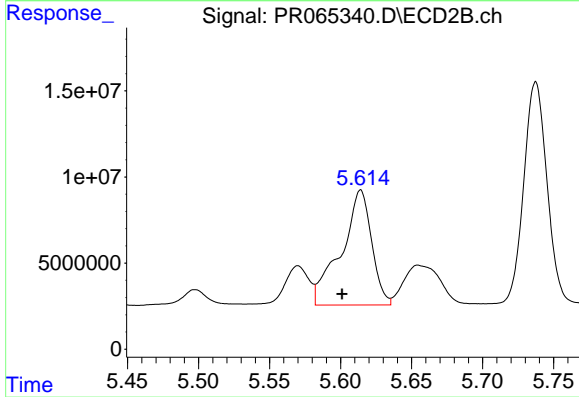
#27 AR-1254-2

R.T.: 5.164 min  
 Delta R.T.: -0.006 min  
 Response: 53819727  
 Conc: 212.45 ng/ml



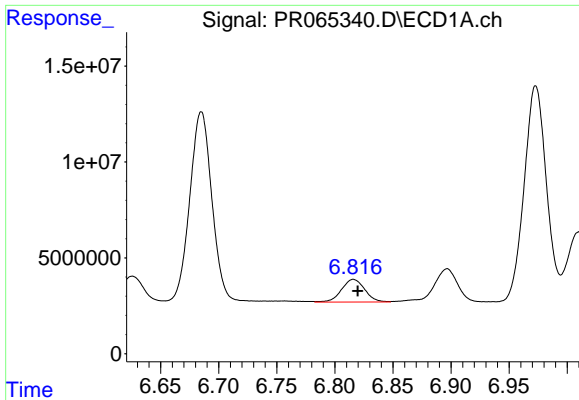
#28 AR-1254-3

R.T.: 6.501 min  
 Delta R.T.: -0.002 min  
 Response: 25974682  
 Conc: 81.19 ng/ml



#28 AR-1254-3

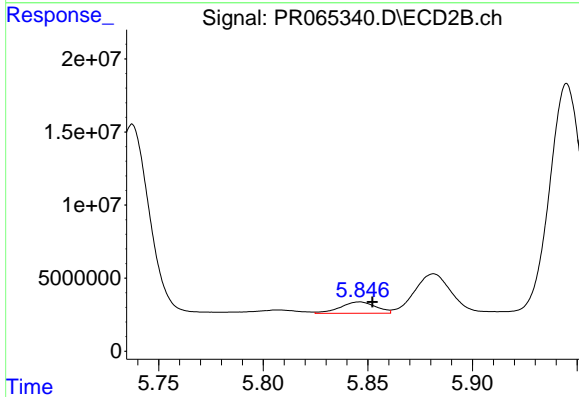
R.T.: 5.614 min  
 Delta R.T.: 0.013 min  
 Response: 99964019  
 Conc: 244.32 ng/ml



#29 AR-1254-4

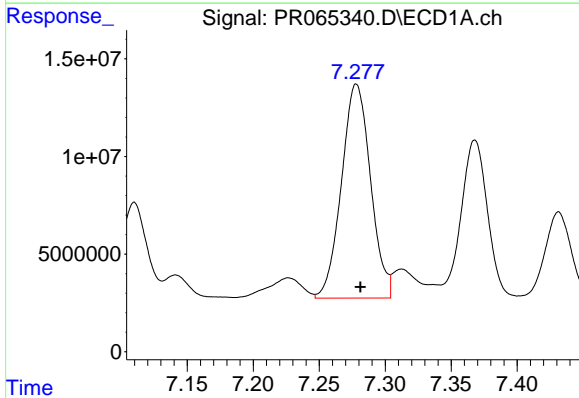
R.T.: 6.816 min  
 Delta R.T.: -0.004 min  
 Response: 16447525  
 Conc: 71.78 ng/ml

Instrument :  
 ECD\_R  
 ClientSampleId :  
 AR1660CCC500



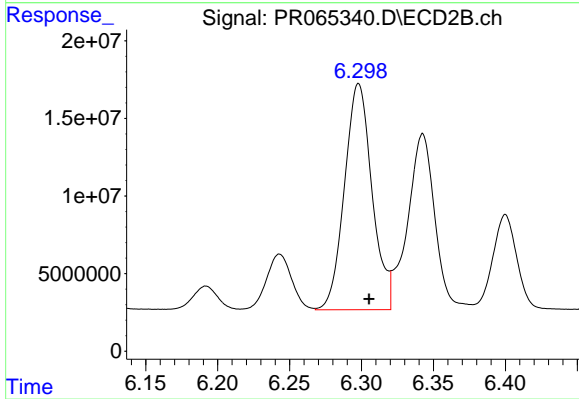
#29 AR-1254-4

R.T.: 5.846 min  
 Delta R.T.: -0.006 min  
 Response: 9173501  
 Conc: 35.73 ng/ml



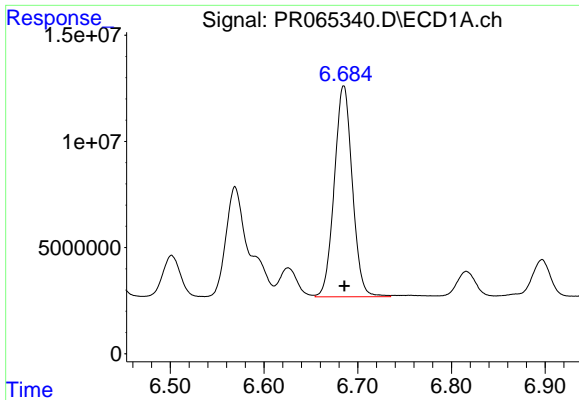
#30 AR-1254-5

R.T.: 7.278 min  
 Delta R.T.: -0.003 min  
 Response: 167968371  
 Conc: 675.84 ng/ml



#30 AR-1254-5

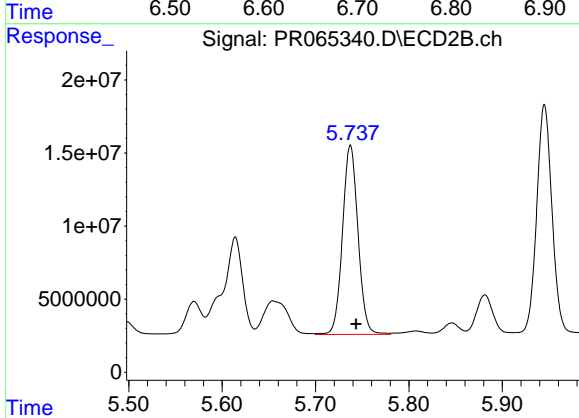
R.T.: 6.298 min  
 Delta R.T.: -0.007 min  
 Response: 195017218  
 Conc: 532.01 ng/ml



#31 AR-1260-1

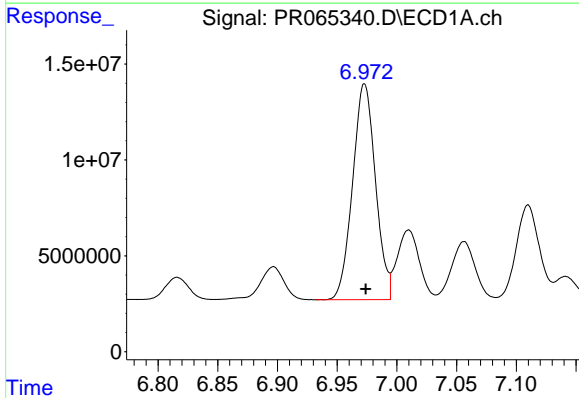
R.T.: 6.685 min  
 Delta R.T.: 0.000 min  
 Response: 132657594  
 Conc: 527.72 ng/ml

Instrument :  
 ECD\_R  
 ClientSampleId :  
 AR1660CCC500



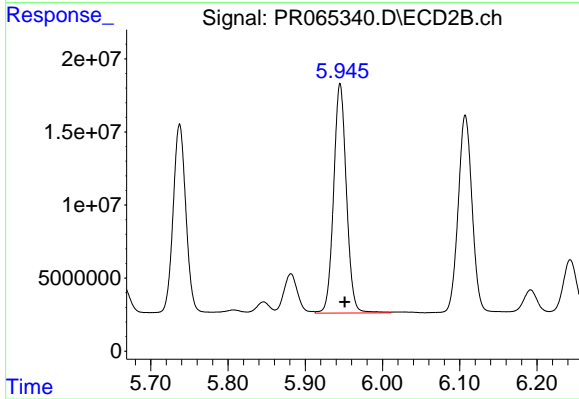
#31 AR-1260-1

R.T.: 5.737 min  
 Delta R.T.: -0.006 min  
 Response: 149584061  
 Conc: 524.04 ng/ml



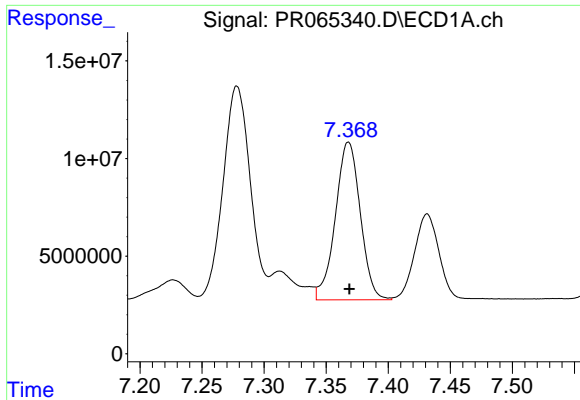
#32 AR-1260-2

R.T.: 6.973 min  
 Delta R.T.: -0.001 min  
 Response: 150050623  
 Conc: 522.11 ng/ml



#32 AR-1260-2

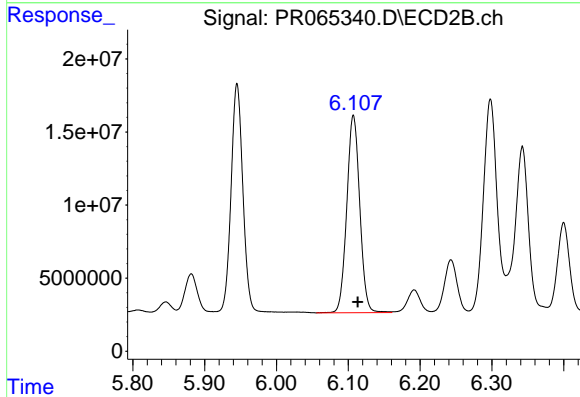
R.T.: 5.945 min  
 Delta R.T.: -0.006 min  
 Response: 180623504  
 Conc: 520.87 ng/ml



#33 AR-1260-3

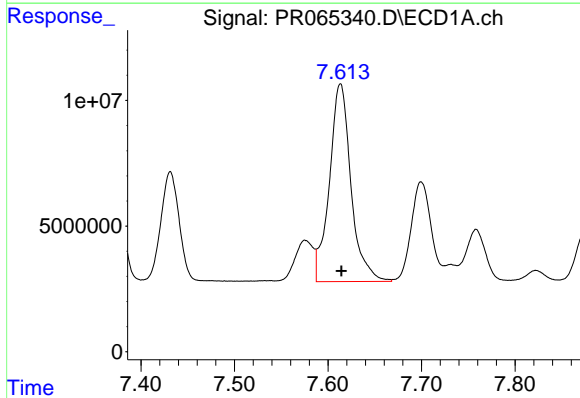
R.T.: 7.368 min  
 Delta R.T.: 0.000 min  
 Response: 113029569  
 Conc: 534.62 ng/ml

Instrument :  
 ECD\_R  
 ClientSampleId :  
 AR1660CCC500



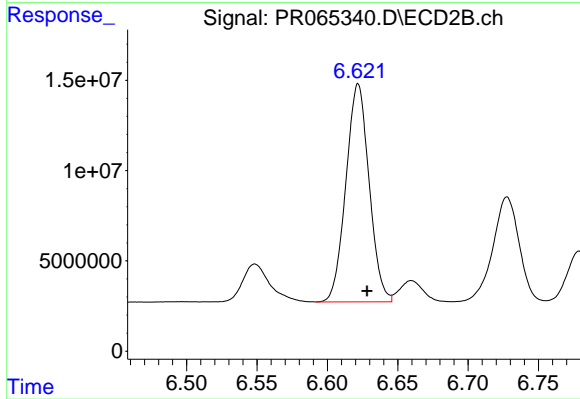
#33 AR-1260-3

R.T.: 6.107 min  
 Delta R.T.: -0.006 min  
 Response: 169341471  
 Conc: 521.23 ng/ml



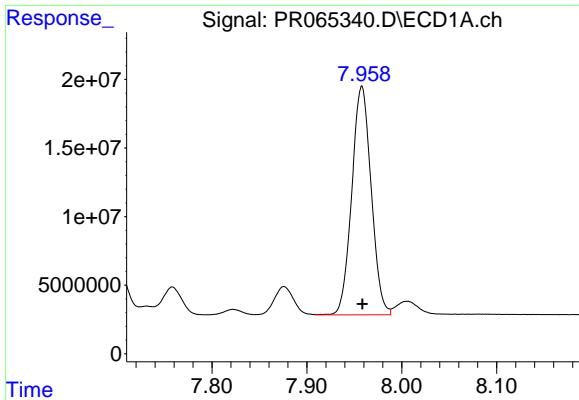
#34 AR-1260-4

R.T.: 7.613 min  
 Delta R.T.: -0.001 min  
 Response: 126439848  
 Conc: 535.82 ng/ml



#34 AR-1260-4

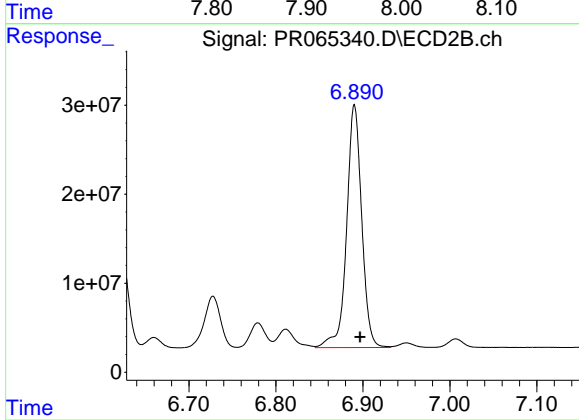
R.T.: 6.622 min  
 Delta R.T.: -0.006 min  
 Response: 138615620  
 Conc: 524.68 ng/ml



#35 AR-1260-5

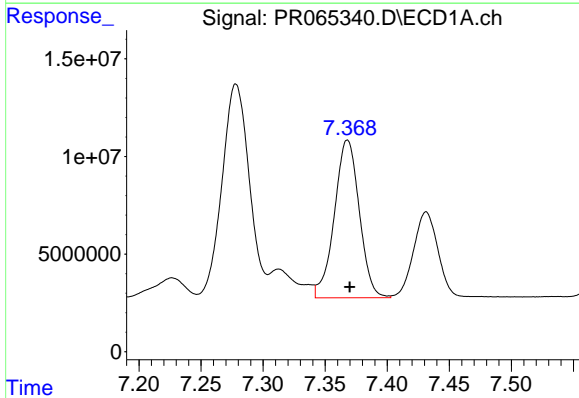
R.T.: 7.958 min  
 Delta R.T.: 0.000 min  
 Response: 236824366  
 Conc: 538.63 ng/ml

Instrument :  
 ECD\_R  
 ClientSampleId :  
 AR1660CCC500



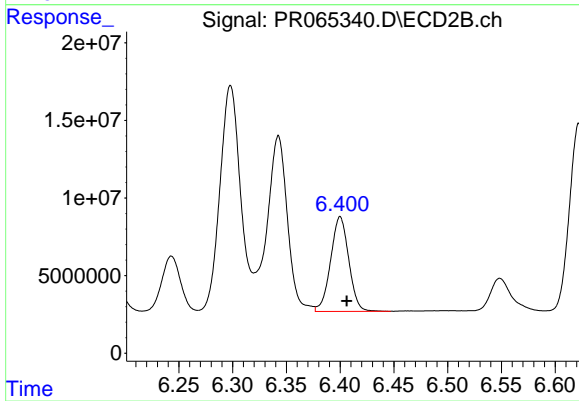
#35 AR-1260-5

R.T.: 6.890 min  
 Delta R.T.: -0.006 min  
 Response: 328509237  
 Conc: 532.67 ng/ml



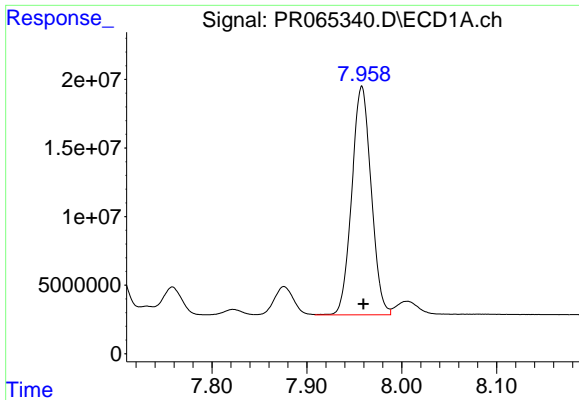
#36 AR-1262-1

R.T.: 7.368 min  
 Delta R.T.: -0.002 min  
 Response: 113029569  
 Conc: 333.92 ng/ml



#36 AR-1262-1

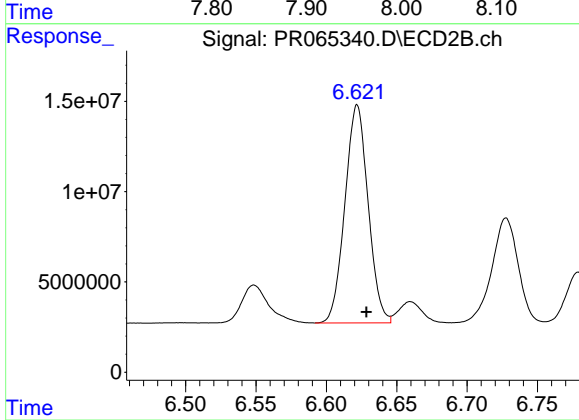
R.T.: 6.400 min  
 Delta R.T.: -0.006 min  
 Response: 71684771  
 Conc: 399.64 ng/ml



#37 AR-1262-2

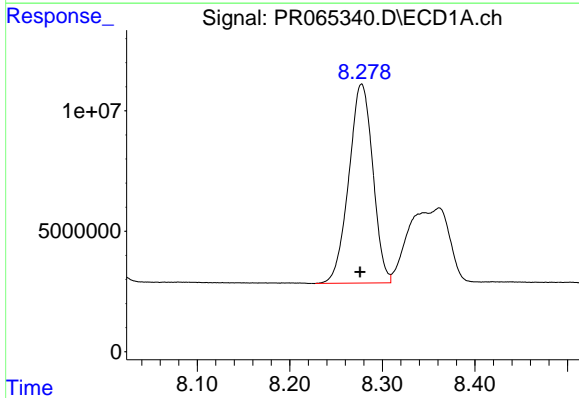
R.T.: 7.958 min  
Delta R.T.: -0.002 min  
Response: 236824366  
Conc: 418.69 ng/ml

Instrument :  
ECD\_R  
ClientSampleId :  
AR1660CCC500



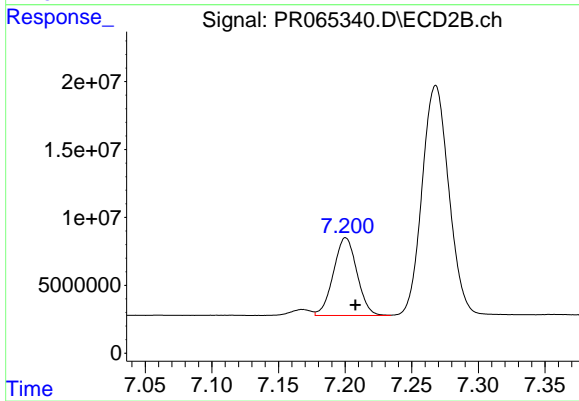
#37 AR-1262-2

R.T.: 6.622 min  
Delta R.T.: -0.006 min  
Response: 138615620  
Conc: 356.25 ng/ml



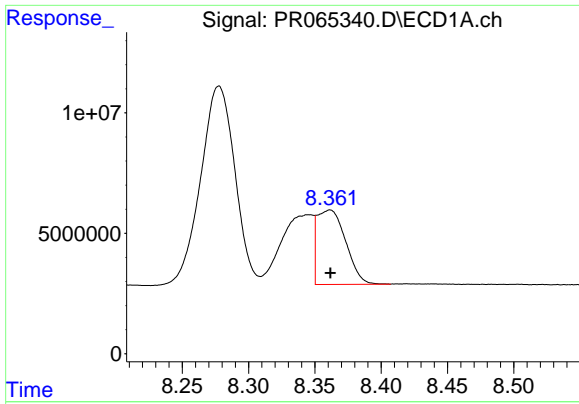
#38 AR-1262-3

R.T.: 8.278 min  
Delta R.T.: 0.002 min  
Response: 148853385  
Conc: 391.18 ng/ml



#38 AR-1262-3

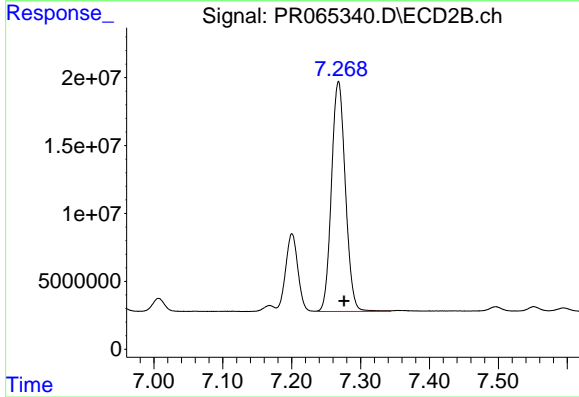
R.T.: 7.200 min  
Delta R.T.: -0.007 min  
Response: 70389149  
Conc: 248.34 ng/ml



#39 AR-1262-4

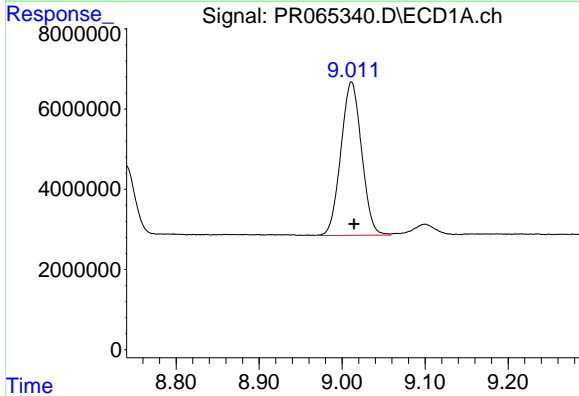
R.T.: 8.361 min  
 Delta R.T.: 0.000 min  
 Response: 46434714  
 Conc: 158.52 ng/ml

Instrument :  
 ECD\_R  
 ClientSampleId :  
 AR1660CCC500



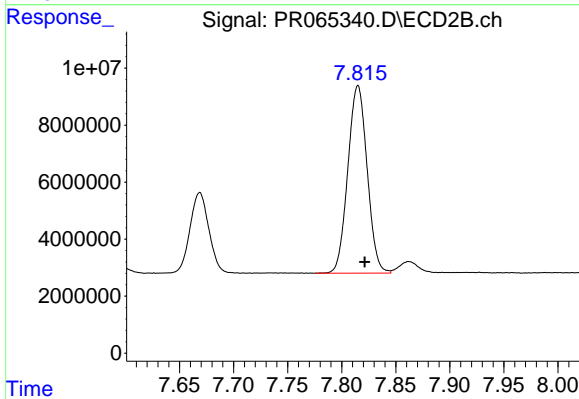
#39 AR-1262-4

R.T.: 7.268 min  
 Delta R.T.: -0.008 min  
 Response: 237530682  
 Conc: 412.46 ng/ml



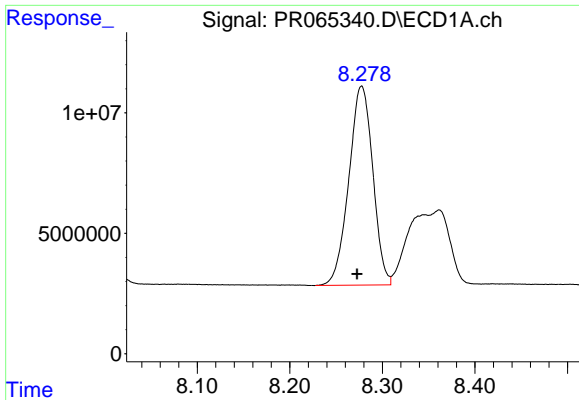
#40 AR-1262-5

R.T.: 9.011 min  
 Delta R.T.: -0.003 min  
 Response: 66189269  
 Conc: 330.30 ng/ml



#40 AR-1262-5

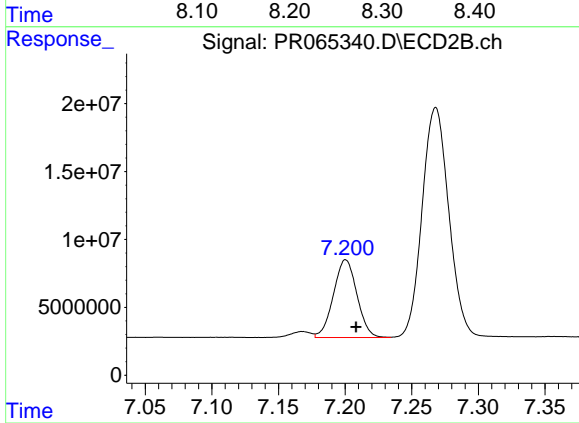
R.T.: 7.815 min  
 Delta R.T.: -0.006 min  
 Response: 81900662  
 Conc: 314.67 ng/ml



#41 AR-1268-1

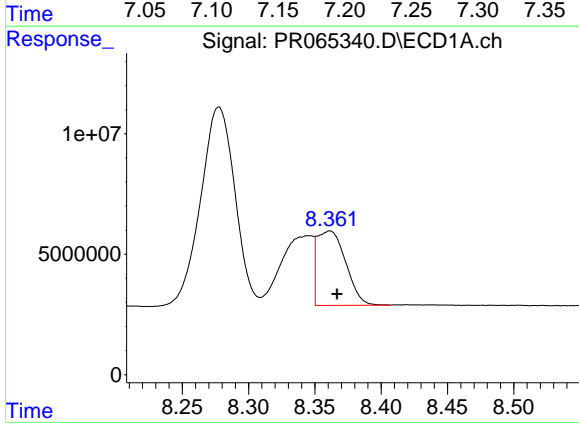
R.T.: 8.278 min  
 Delta R.T.: 0.005 min  
 Response: 148853385  
 Conc: 245.53 ng/ml

Instrument :  
 ECD\_R  
 ClientSampleId :  
 AR1660CCC500



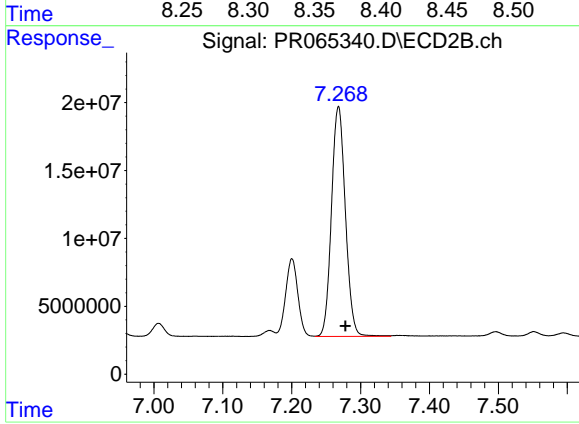
#41 AR-1268-1

R.T.: 7.200 min  
 Delta R.T.: -0.008 min  
 Response: 70389149  
 Conc: 88.73 ng/ml



#42 AR-1268-2

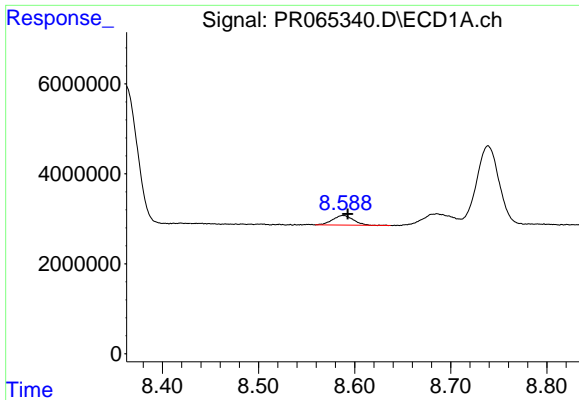
R.T.: 8.361 min  
 Delta R.T.: -0.005 min  
 Response: 46434714  
 Conc: 84.86 ng/ml



#42 AR-1268-2

R.T.: 7.268 min  
 Delta R.T.: -0.010 min  
 Response: 237530682  
 Conc: 319.06 ng/ml

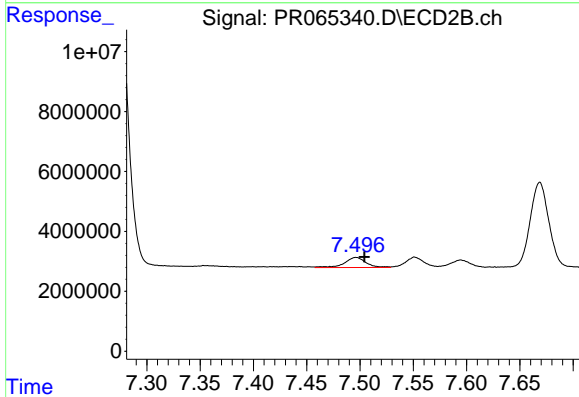




#43 AR-1268-3

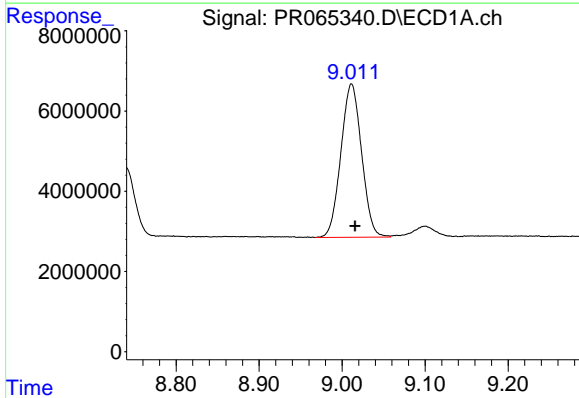
R.T.: 8.588 min  
 Delta R.T.: -0.004 min  
 Response: 3190277  
 Conc: 6.72 ng/ml

Instrument :  
 ECD\_R  
 ClientSampleId :  
 AR1660CCC500



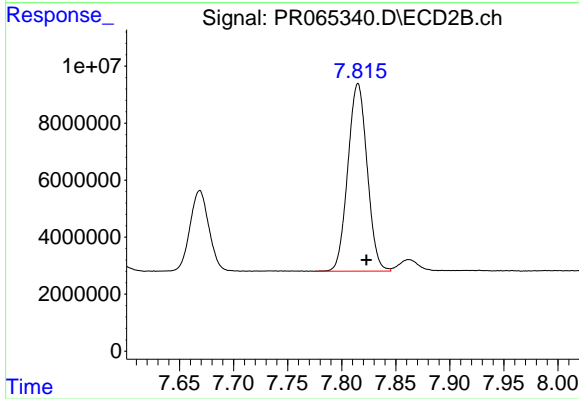
#43 AR-1268-3

R.T.: 7.496 min  
 Delta R.T.: -0.008 min  
 Response: 4775518  
 Conc: 7.54 ng/ml



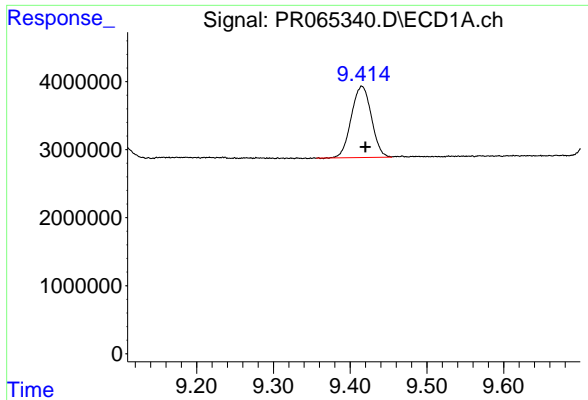
#44 AR-1268-4

R.T.: 9.011 min  
 Delta R.T.: -0.004 min  
 Response: 66189269  
 Conc: 325.28 ng/ml



#44 AR-1268-4

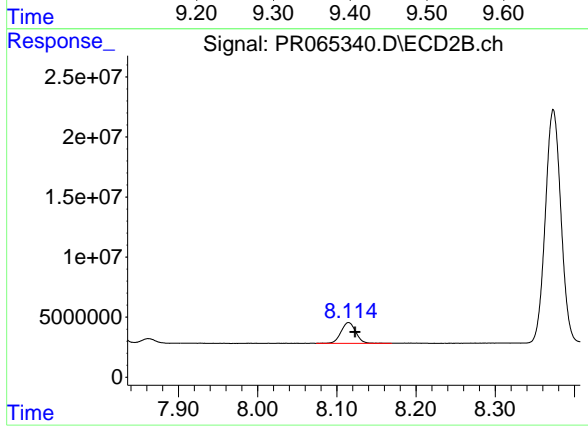
R.T.: 7.815 min  
 Delta R.T.: -0.008 min  
 Response: 81900662  
 Conc: 312.23 ng/ml



#45 AR-1268-5

R.T.: 9.415 min  
Delta R.T.: -0.005 min  
Response: 19081164  
Conc: 13.09 ng/ml

Instrument :  
ECD\_R  
ClientSampleId :  
AR1660CCC500



#45 AR-1268-5

R.T.: 8.115 min  
Delta R.T.: -0.008 min  
Response: 22434588  
Conc: 11.72 ng/ml