

Data Path : Z:\pestpcbsrv\HPCHEM1\ECD_R\Data\PR020823\
 Data File : PR059468.D
 Signal(s) : Signal #1: ECD1A.ch Signal #2: ECD2B.ch
 Acq On : 08 Feb 2023 11:35
 Operator : YP\AJ
 Sample : 01422-03MSD
 Misc :
 ALS Vial : 16 Sample Multiplier: 1

Instrument :
 ECD_R
 ClientSampleId :

Integration File signal 1: autoint1.e
 Integration File signal 2: autoint2.e
 Quant Time: Feb 08 21:45:43 2023
 Quant Method : Z:\pestpcbsrv\HPCHEM1\ECD_R\Method\PR012723CLP.M
 Quant Title : GC EXTRACTABLES
 QLast Update : Fri Jan 27 08:44:40 2023
 Response via : Initial Calibration
 Integrator: ChemStation

Volume Inj. : 1 µl
 Signal #1 Phase : ZB MR1 Signal #2 Phase: ZB MR2
 Signal #1 Info : 30Mx0.32mmx 0.5µm Signal #2 Info : 30M x 0.32mm x 0.25µm

Compound	RT#1	RT#2	Resp#1	Resp#2	ng/ml	ng/ml

System Monitoring Compounds						
1) SA Tetrachlo...	3.692	2.909	66588078	99114302	24.546	24.927
2) SA Decachlor...	9.665	8.143	73860593	115.3E6	35.315	36.126
Target Compounds						
3) L1 AR-1016-1	4.928	4.019	39308137	63225772	453.807	455.375
4) L1 AR-1016-2	4.950	4.037	53048590	89931864	446.306	466.772
5) L1 AR-1016-3	5.014	4.215	36278432	46555921	474.323	458.585
6) L1 AR-1016-4	5.117	4.265	28243620	36762056	453.949	478.656
7) L1 AR-1016-5	5.436	4.481	26921837	46460125	437.978	452.112
8) L2 AR-1221-1	3.913	3.132	5799920	5516304	171.229	124.398 #
9) L2 AR-1221-2	4.006	3.218	6108954	7292561	254.564	230.898
10) L2 AR-1221-3	4.085	3.294	23634384	31934451	316.318	294.882
11) L3 AR-1232-1	4.085	3.294	23634384	31934451	366.756	353.259
12) L3 AR-1232-2	4.640	4.037	29720119	89931864	996.915	1043.191
13) L3 AR-1232-3	4.950	4.215	53048590	46555921	942.998	1055.169
14) L3 AR-1232-4	5.117	4.307	28243620	43821314	976.725	1146.364
15) L3 AR-1232-5	5.222	4.481	22505855	46460125	1063.111	1043.949
16) L4 AR-1242-1	4.928	4.019	39308137	63225772	533.068	550.308
17) L4 AR-1242-2	4.950	4.037	53048590	89931864	524.743	563.257
18) L4 AR-1242-3	5.014	4.215	36278432	46555921	555.891	552.822
19) L4 AR-1242-4	5.117	4.307	28243620	43821314	529.394	549.993
20) L4 AR-1242-5	5.913	4.849	3517954	36507929	65.441	353.180 #
21) L5 AR-1248-1	4.928	4.019	39308137	63225772	698.678	728.143
22) L5 AR-1248-2	5.222	4.265	22505855	36762056	308.713	313.545
23) L5 AR-1248-3	5.436	4.307	26921837	43821314	313.502	364.912
24) L5 AR-1248-4	5.872	4.481	3912080	46460125	41.109	315.477 #
25) L5 AR-1248-5	5.913	4.892	3517954	5284330	38.150	35.781
26) L6 AR-1254-1	5.843	4.849	20117368	36507929	212.973	162.060
27) L6 AR-1254-2	6.082	5.008	21635056	34189555	148.192	177.759
28) L6 AR-1254-3	6.477	5.429	11333652	15497674	73.445	49.333 #
29) L6 AR-1254-4	6.790	5.674	7235070	6257747	62.555	32.304 #
30) L6 AR-1254-5	7.248	6.116	64121274	121.4E6	517.717	450.443
31) L7 AR-1260-1	6.659	5.567	46885634	88397229	400.409	413.700
32) L7 AR-1260-2	6.942	5.772	53668772	103.8E6	386.758	403.696
33) L7 AR-1260-3	7.335	5.929	34511791	99556791	334.202	422.503 #
34) L7 AR-1260-4	7.579	6.434	42370099	69351738	361.710	358.922
35) L7 AR-1260-5	7.920	6.699	76089654	162.0E6	334.831	361.313
36) L8 AR-1262-1	7.335	6.160	34511791	74416728	228.785	257.577
37) L8 AR-1262-2	7.920	6.434	76089654	69351738	291.012	271.818
38) L8 AR-1262-3	8.238	7.003	51238357	25281090	280.134	131.895 #
39) L8 AR-1262-4	8.317	7.068	10846808	112.9E6	123.562	310.157 #
40) L8 AR-1262-5	8.952	7.608	19601953	32025189	196.358	198.640
41) L9 AR-1268-1	8.238	7.003	51238357	25281090	120.057	31.307 #

Data Path : Z:\pestpcbsrv\HPCHEM1\ECD_R\Data\PR020823\
 Data File : PR059468.D
 Signal(s) : Signal #1: ECD1A.ch Signal #2: ECD2B.ch
 Acq On : 08 Feb 2023 11:35
 Operator : YP\AJ
 Sample : 01422-03MSD
 Misc :
 ALS Vial : 16 Sample Multiplier: 1

Instrument :
 ECD_R
 ClientSampleId :

Integration File signal 1: autoint1.e
 Integration File signal 2: autoint2.e
 Quant Time: Feb 08 21:45:43 2023
 Quant Method : Z:\pestpcbsrv\HPCHEM1\ECD_R\Method\PR012723CLP.M
 Quant Title : GC EXTRACTABLES
 QLast Update : Fri Jan 27 08:44:40 2023
 Response via : Initial Calibration
 Integrator: ChemStation

Volume Inj. : 1 µl
 Signal #1 Phase : ZB MR1 Signal #2 Phase: ZB MR2
 Signal #1 Info : 30Mx0.32mmx 0.5µm Signal #2 Info : 30M x 0.32mm x 0.25µm

	Compound	RT#1	RT#2	Resp#1	Resp#2	ng/ml	ng/ml
42)	L9 AR-1268-2	8.317	7.068	10846808	112.9E6	28.079	154.378 #
43)	L9 AR-1268-3	8.542	7.293	1469140	2570758	4.362	4.101
44)	L9 AR-1268-4	8.952	7.608	19601953	32025189	132.176	128.733
45)	L9 AR-1268-5	9.347	7.901	7192902	10126669	6.643	5.201

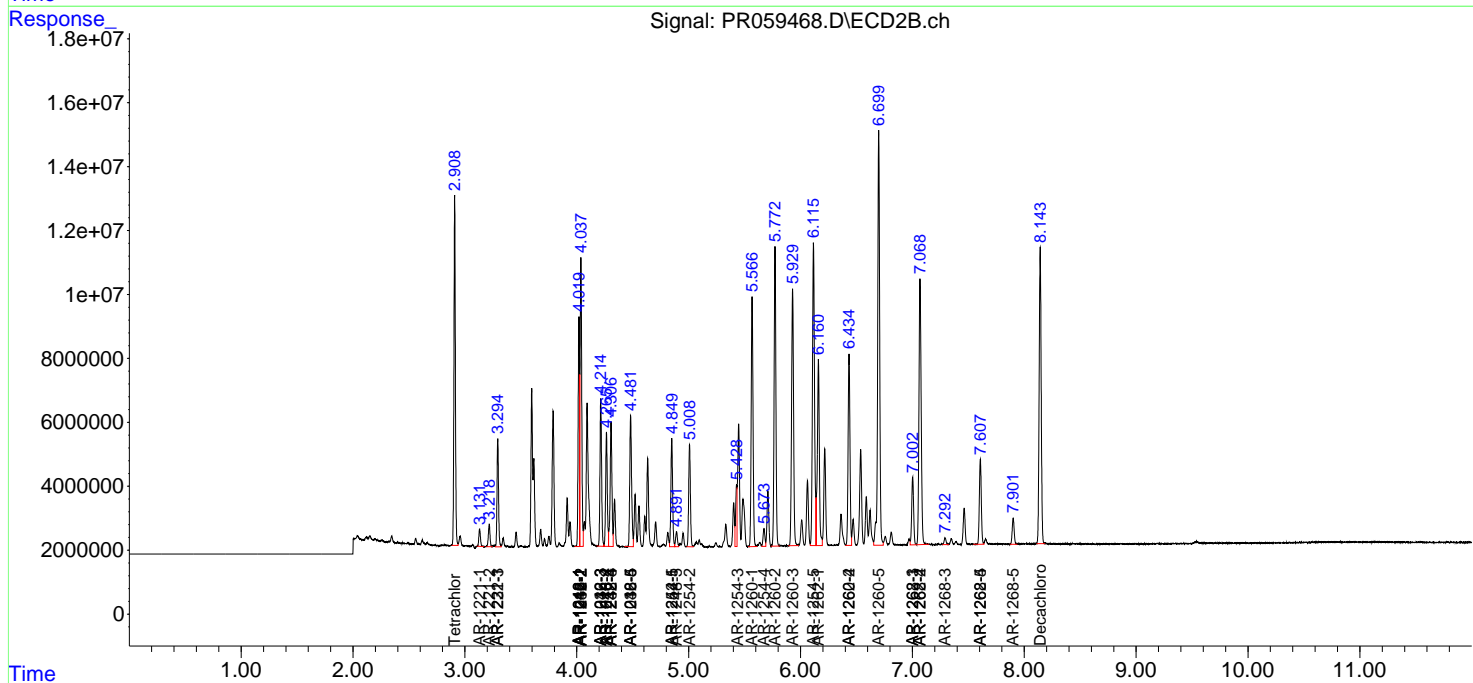
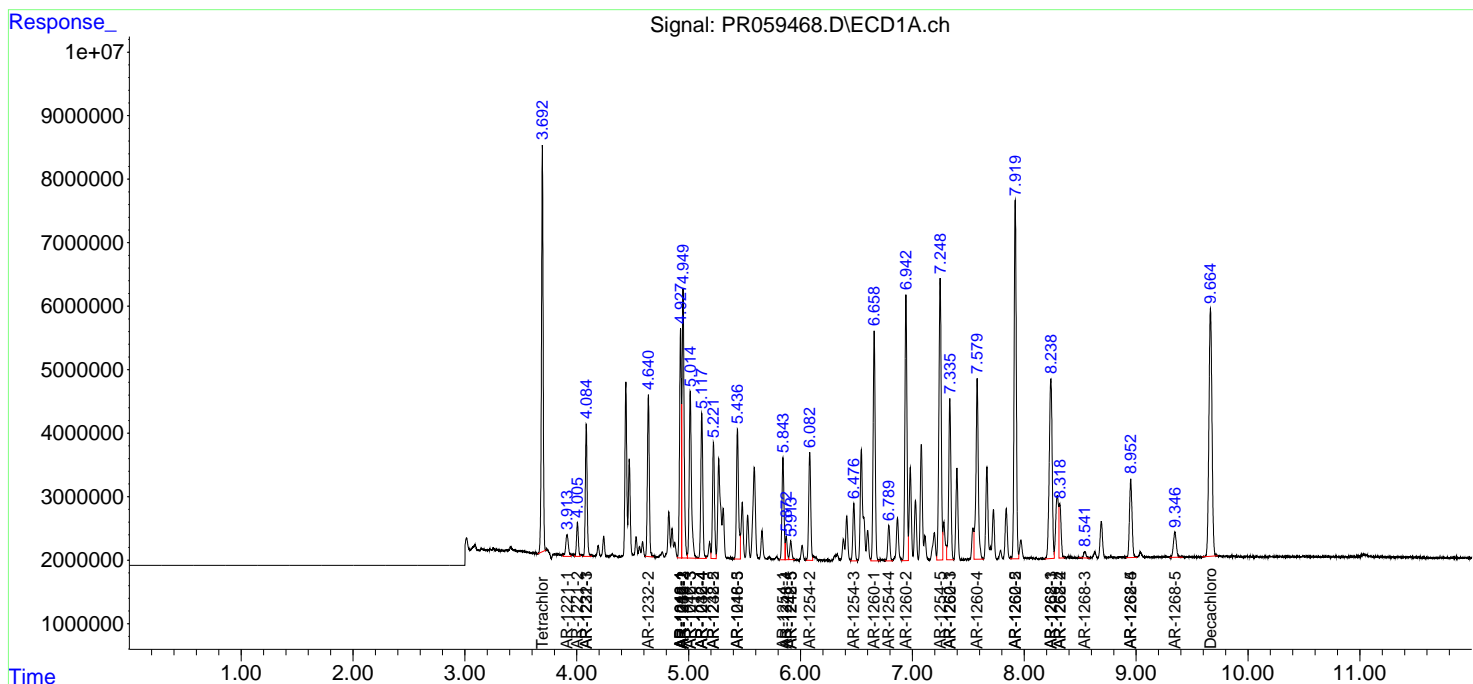
(f)=RT Delta > 1/2 Window (#)=Amounts differ by > 25% (m)=manual int.

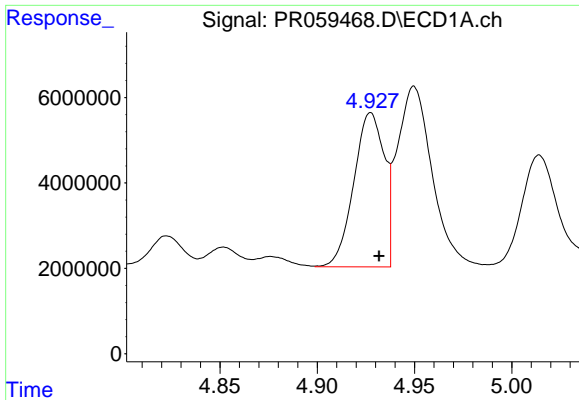
Data Path : Z:\pestpcbsrv\HPCHEM1\ECD_R\Data\PR020823\
 Data File : PR059468.D
 Signal(s) : Signal #1: ECD1A.ch Signal #2: ECD2B.ch
 Acq On : 08 Feb 2023 11:35
 Operator : YP\AJ
 Sample : 01422-03MSD
 Misc :
 ALS Vial : 16 Sample Multiplier: 1

Instrument :
 ECD_R
 ClientSampleId :

Integration File signal 1: autoint1.e
 Integration File signal 2: autoint2.e
 Quant Time: Feb 08 21:45:43 2023
 Quant Method : Z:\pestpcbsrv\HPCHEM1\ECD_R\Method\PR012723CLP.M
 Quant Title : GC EXTRACTABLES
 QLast Update : Fri Jan 27 08:44:40 2023
 Response via : Initial Calibration
 Integrator: ChemStation

Volume Inj. : 1 µl
 Signal #1 Phase : ZB MR1 Signal #2 Phase: ZB MR2
 Signal #1 Info : 30Mx0.32mmx 0.5µm Signal #2 Info : 30M x 0.32mm x 0.25µm

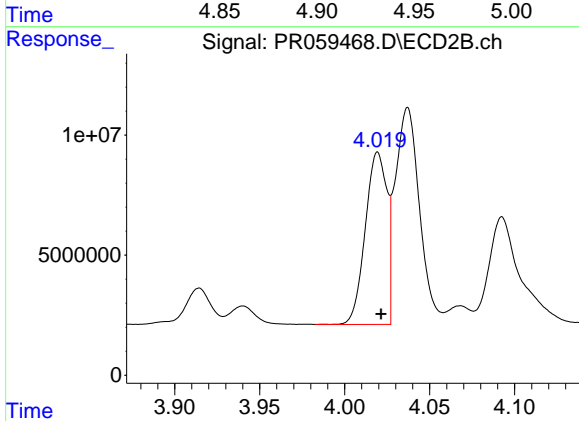




#3 AR-1016-1

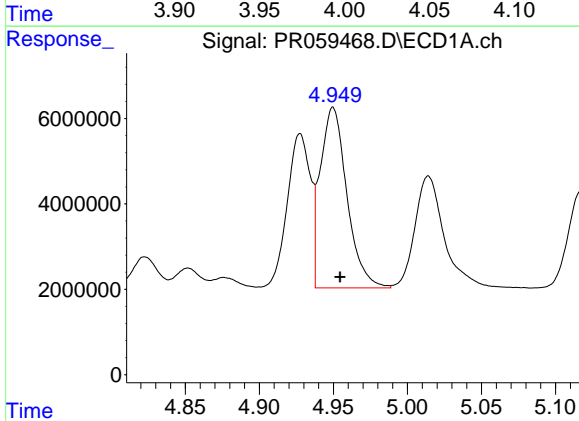
R.T.: 4.928 min
 Delta R.T.: -0.004 min
 Response: 39308137
 Conc: 453.81 ng/ml

Instrument :
 ECD_R
 ClientSampleId :



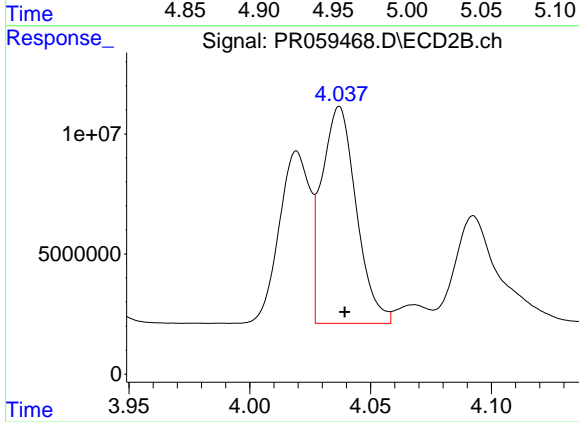
#3 AR-1016-1

R.T.: 4.019 min
 Delta R.T.: -0.002 min
 Response: 63225772
 Conc: 455.37 ng/ml



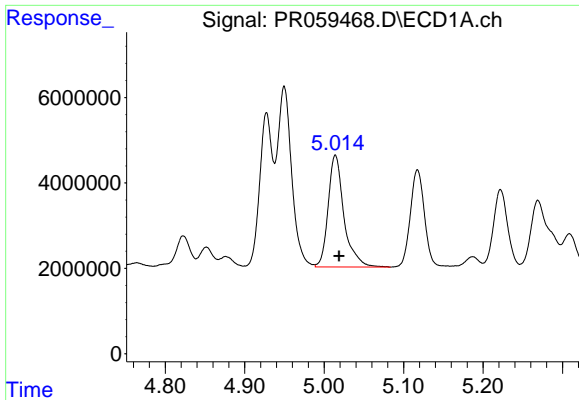
#4 AR-1016-2

R.T.: 4.950 min
 Delta R.T.: -0.005 min
 Response: 53048590
 Conc: 446.31 ng/ml



#4 AR-1016-2

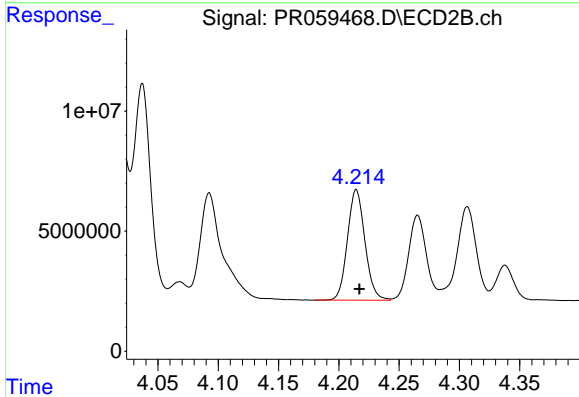
R.T.: 4.037 min
 Delta R.T.: -0.002 min
 Response: 89931864
 Conc: 466.77 ng/ml



#5 AR-1016-3

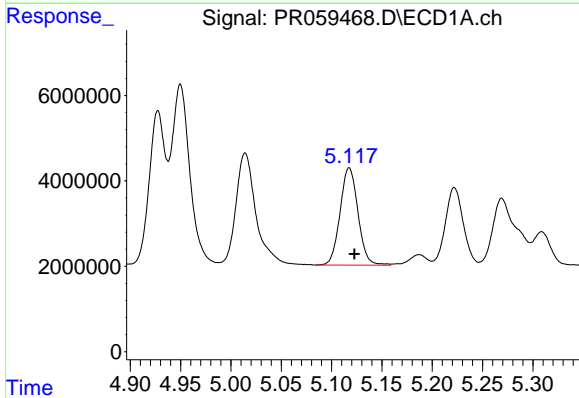
R.T.: 5.014 min
 Delta R.T.: -0.005 min
 Response: 36278432
 Conc: 474.32 ng/ml

Instrument :
 ECD_R
 ClientSampleId :



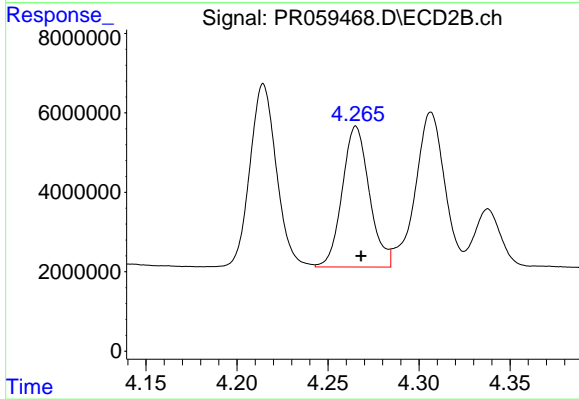
#5 AR-1016-3

R.T.: 4.215 min
 Delta R.T.: -0.002 min
 Response: 46555921
 Conc: 458.58 ng/ml



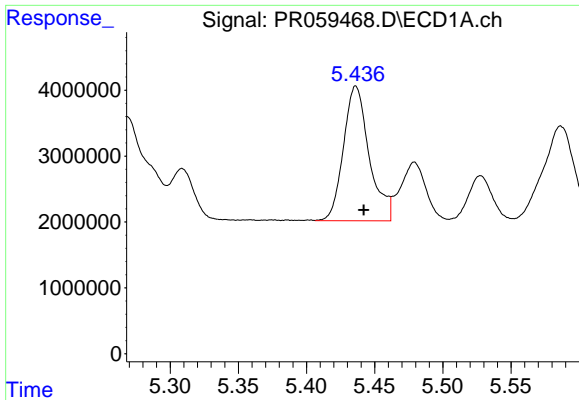
#6 AR-1016-4

R.T.: 5.117 min
 Delta R.T.: -0.005 min
 Response: 28243620
 Conc: 453.95 ng/ml



#6 AR-1016-4

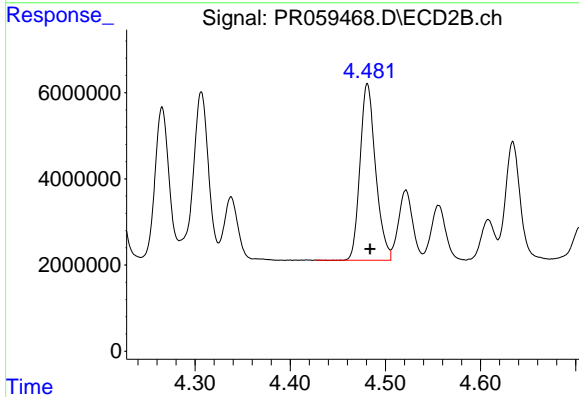
R.T.: 4.265 min
 Delta R.T.: -0.003 min
 Response: 36762056
 Conc: 478.66 ng/ml



#7 AR-1016-5

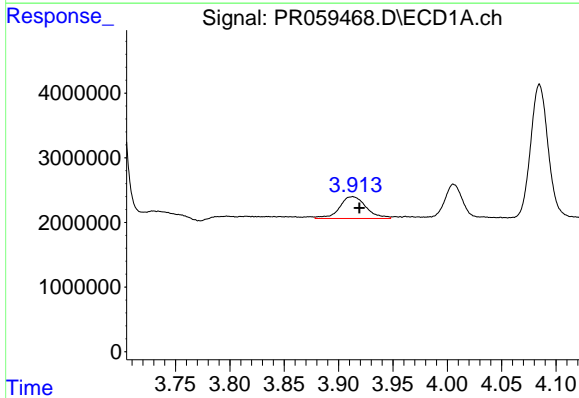
R.T.: 5.436 min
 Delta R.T.: -0.006 min
 Response: 26921837
 Conc: 437.98 ng/ml

Instrument :
 ECD_R
 ClientSampleId :



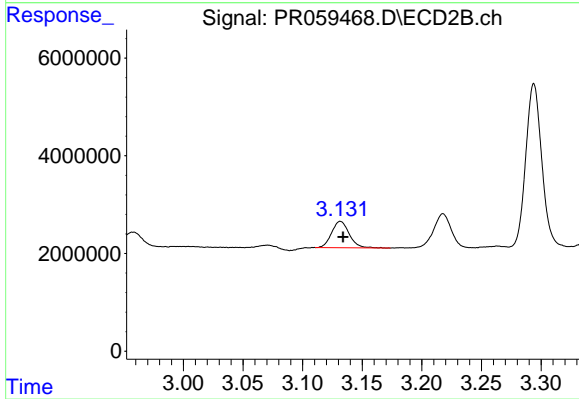
#7 AR-1016-5

R.T.: 4.481 min
 Delta R.T.: -0.003 min
 Response: 46460125
 Conc: 452.11 ng/ml



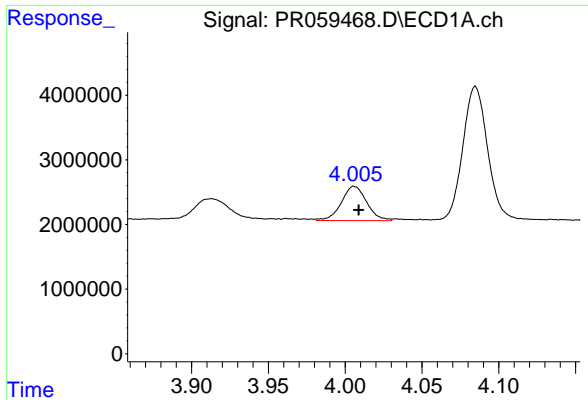
#8 AR-1221-1

R.T.: 3.913 min
 Delta R.T.: -0.006 min
 Response: 5799920
 Conc: 171.23 ng/ml



#8 AR-1221-1

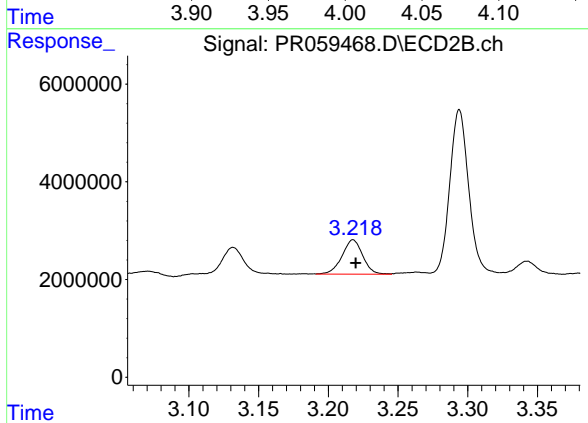
R.T.: 3.132 min
 Delta R.T.: -0.002 min
 Response: 5516304
 Conc: 124.40 ng/ml



#9 AR-1221-2

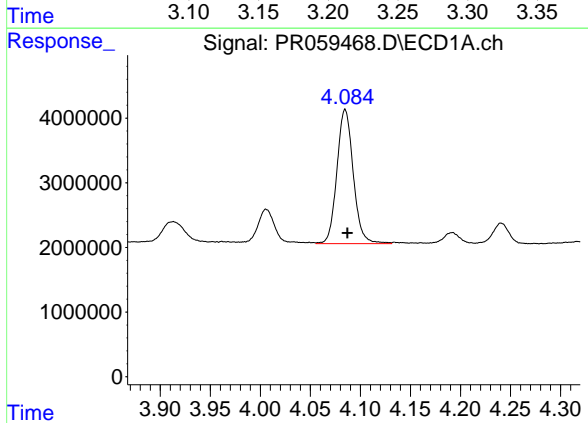
R.T.: 4.006 min
 Delta R.T.: -0.003 min
 Response: 6108954
 Conc: 254.56 ng/ml

Instrument :
 ECD_R
 ClientSampleId :



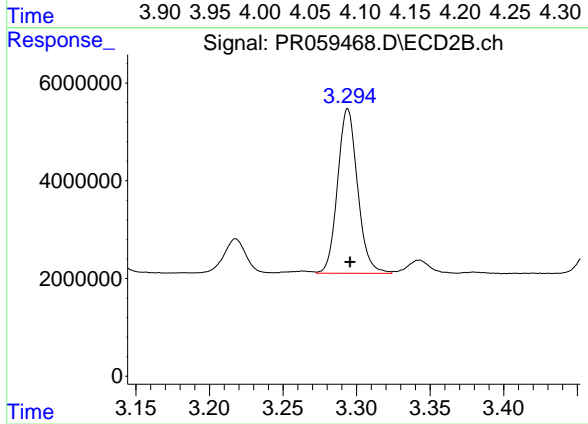
#9 AR-1221-2

R.T.: 3.218 min
 Delta R.T.: -0.002 min
 Response: 7292561
 Conc: 230.90 ng/ml



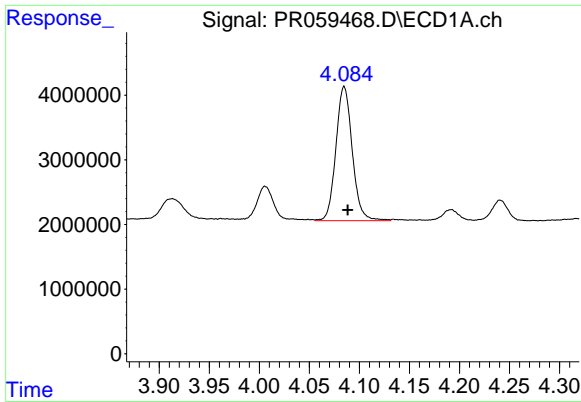
#10 AR-1221-3

R.T.: 4.085 min
 Delta R.T.: -0.002 min
 Response: 23634384
 Conc: 316.32 ng/ml



#10 AR-1221-3

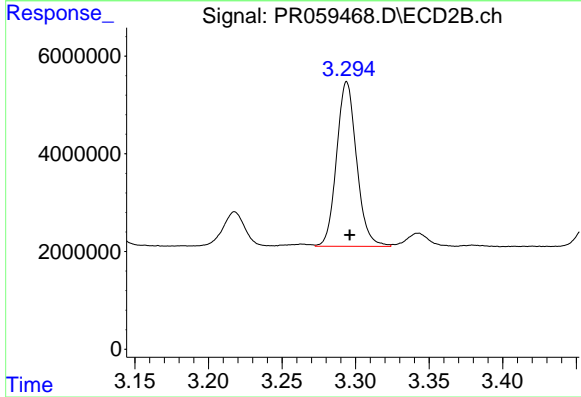
R.T.: 3.294 min
 Delta R.T.: -0.002 min
 Response: 31934451
 Conc: 294.88 ng/ml



#11 AR-1232-1

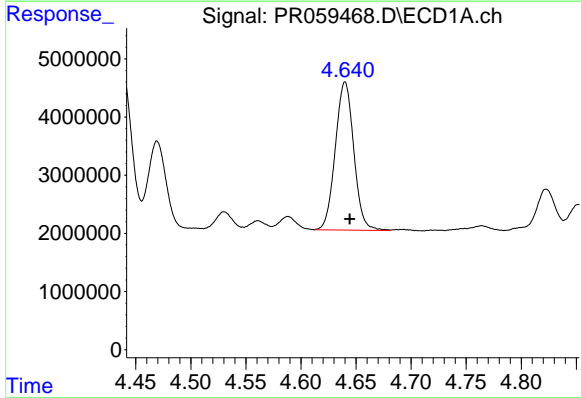
R.T.: 4.085 min
 Delta R.T.: -0.003 min
 Response: 23634384
 Conc: 366.76 ng/ml

Instrument :
 ECD_R
 ClientSampleId :



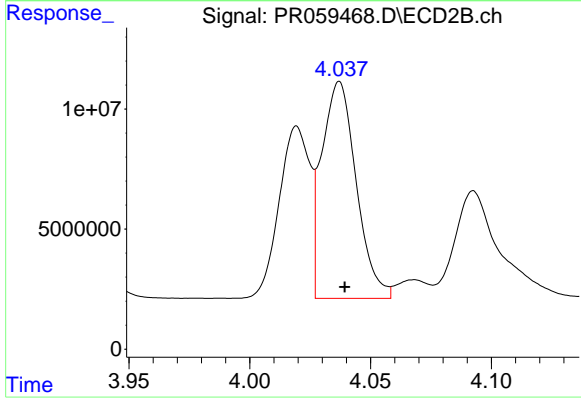
#11 AR-1232-1

R.T.: 3.294 min
 Delta R.T.: -0.002 min
 Response: 31934451
 Conc: 353.26 ng/ml



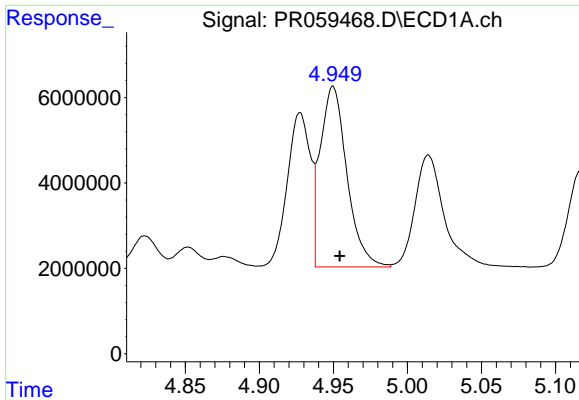
#12 AR-1232-2

R.T.: 4.640 min
 Delta R.T.: -0.004 min
 Response: 29720119
 Conc: 996.92 ng/ml



#12 AR-1232-2

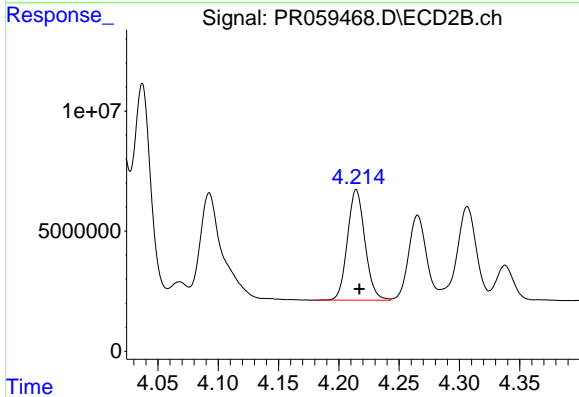
R.T.: 4.037 min
 Delta R.T.: -0.002 min
 Response: 89931864
 Conc: 1043.19 ng/ml



#13 AR-1232-3

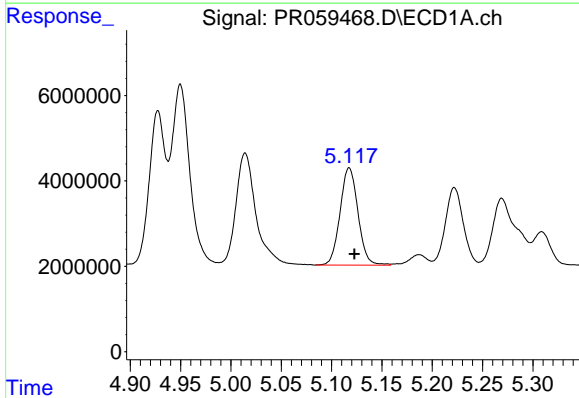
R.T.: 4.950 min
 Delta R.T.: -0.005 min
 Response: 53048590
 Conc: 943.00 ng/ml

Instrument :
 ECD_R
 ClientSampleId :



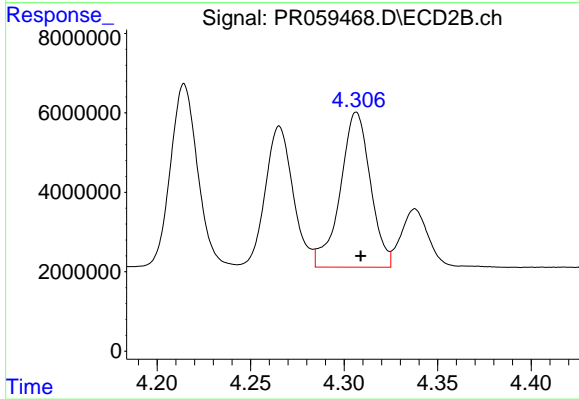
#13 AR-1232-3

R.T.: 4.215 min
 Delta R.T.: -0.003 min
 Response: 46555921
 Conc: 1055.17 ng/ml



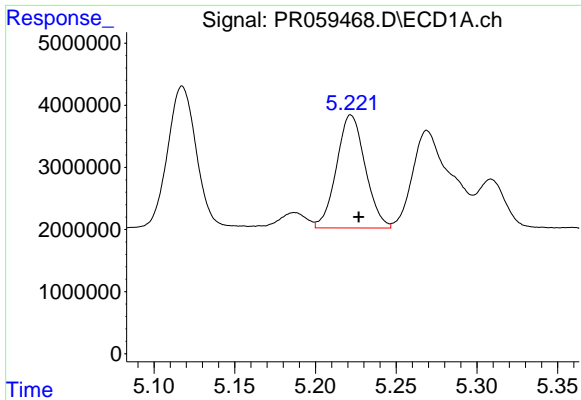
#14 AR-1232-4

R.T.: 5.117 min
 Delta R.T.: -0.005 min
 Response: 28243620
 Conc: 976.72 ng/ml



#14 AR-1232-4

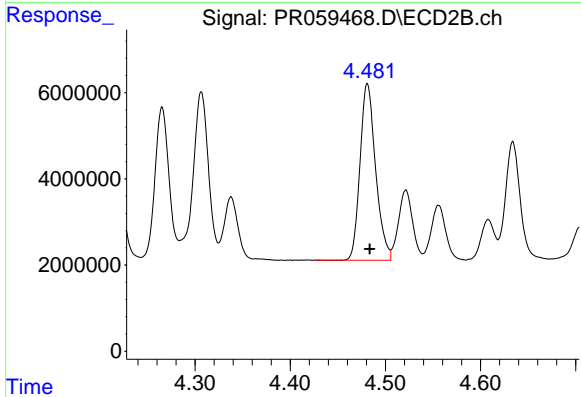
R.T.: 4.307 min
 Delta R.T.: -0.002 min
 Response: 43821314
 Conc: 1146.36 ng/ml



#15 AR-1232-5

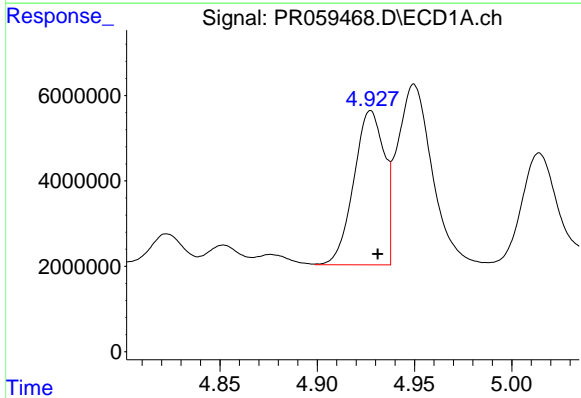
R.T.: 5.222 min
 Delta R.T.: -0.005 min
 Response: 22505855
 Conc: 1063.11 ng/ml

Instrument :
 ECD_R
 ClientSampleId :



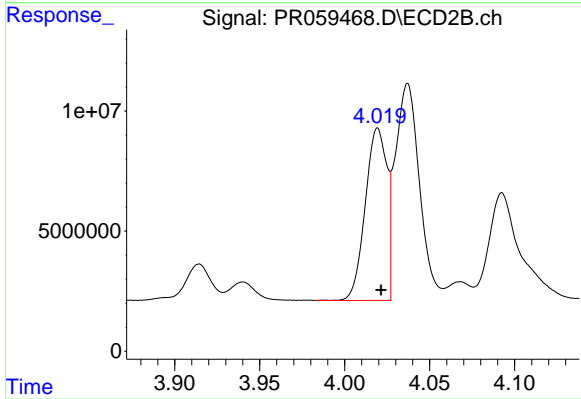
#15 AR-1232-5

R.T.: 4.481 min
 Delta R.T.: -0.002 min
 Response: 46460125
 Conc: 1043.95 ng/ml



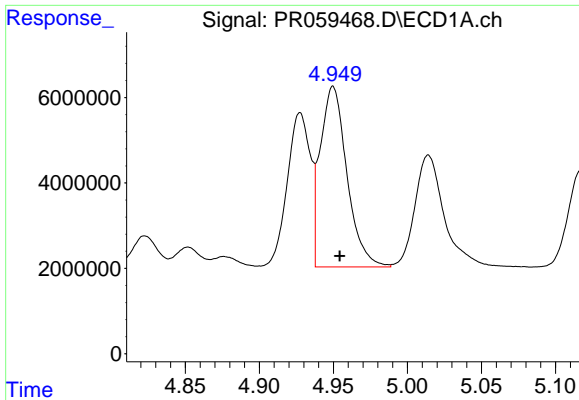
#16 AR-1242-1

R.T.: 4.928 min
 Delta R.T.: -0.004 min
 Response: 39308137
 Conc: 533.07 ng/ml



#16 AR-1242-1

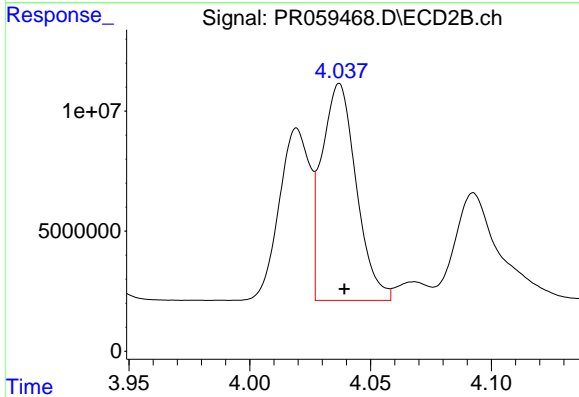
R.T.: 4.019 min
 Delta R.T.: -0.002 min
 Response: 63225772
 Conc: 550.31 ng/ml



#17 AR-1242-2

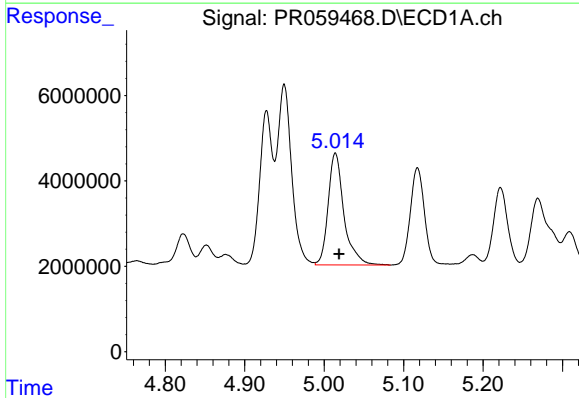
R.T.: 4.950 min
 Delta R.T.: -0.004 min
 Response: 53048590
 Conc: 524.74 ng/ml

Instrument :
 ECD_R
 ClientSampleId :



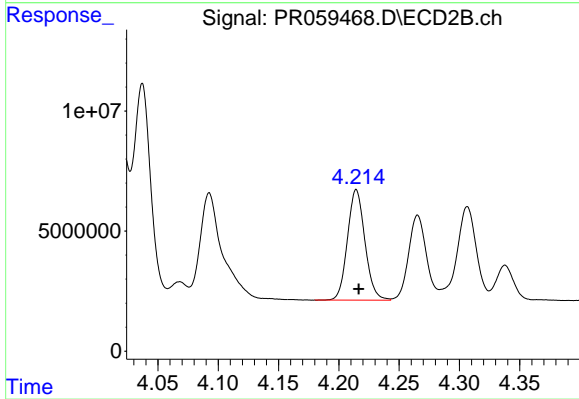
#17 AR-1242-2

R.T.: 4.037 min
 Delta R.T.: -0.002 min
 Response: 89931864
 Conc: 563.26 ng/ml



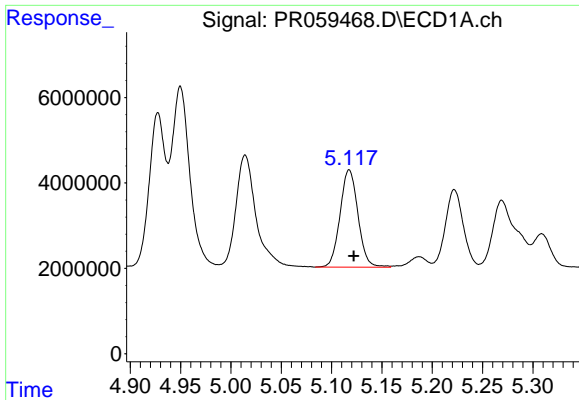
#18 AR-1242-3

R.T.: 5.014 min
 Delta R.T.: -0.004 min
 Response: 36278432
 Conc: 555.89 ng/ml



#18 AR-1242-3

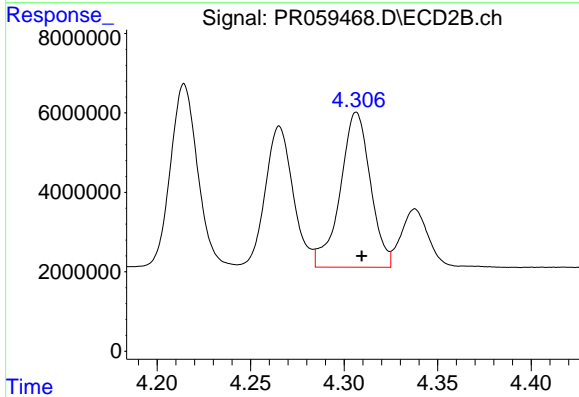
R.T.: 4.215 min
 Delta R.T.: -0.002 min
 Response: 46555921
 Conc: 552.82 ng/ml



#19 AR-1242-4

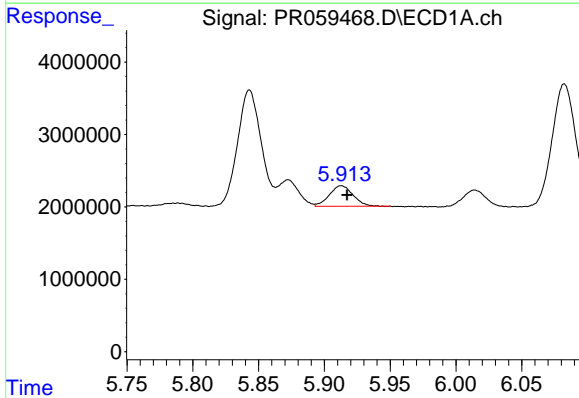
R.T.: 5.117 min
 Delta R.T.: -0.005 min
 Response: 28243620
 Conc: 529.39 ng/ml

Instrument :
 ECD_R
 ClientSampleId :



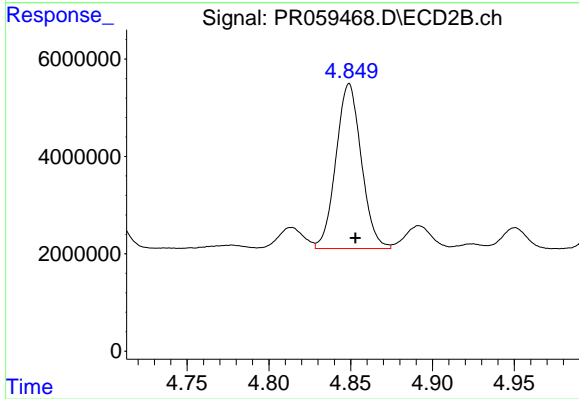
#19 AR-1242-4

R.T.: 4.307 min
 Delta R.T.: -0.003 min
 Response: 43821314
 Conc: 549.99 ng/ml



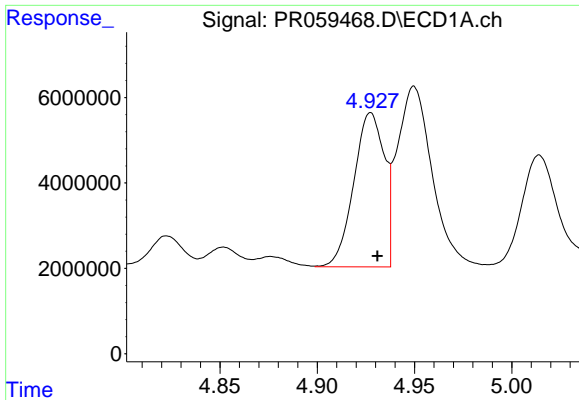
#20 AR-1242-5

R.T.: 5.913 min
 Delta R.T.: -0.004 min
 Response: 3517954
 Conc: 65.44 ng/ml



#20 AR-1242-5

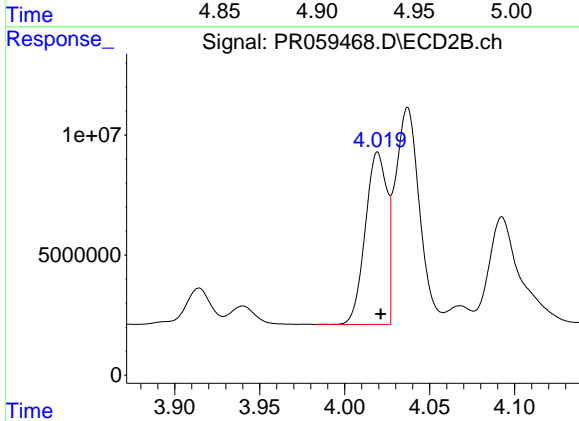
R.T.: 4.849 min
 Delta R.T.: -0.004 min
 Response: 36507929
 Conc: 353.18 ng/ml



#21 AR-1248-1

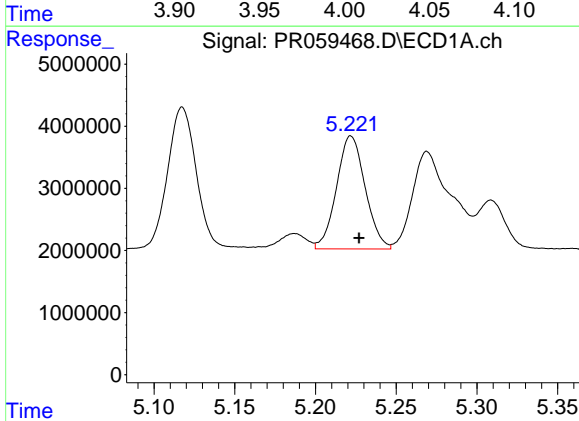
R.T.: 4.928 min
 Delta R.T.: -0.004 min
 Response: 39308137
 Conc: 698.68 ng/ml

Instrument :
 ECD_R
 ClientSampleId :



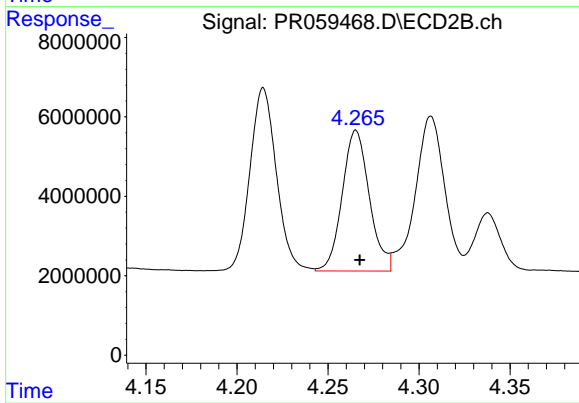
#21 AR-1248-1

R.T.: 4.019 min
 Delta R.T.: -0.002 min
 Response: 63225772
 Conc: 728.14 ng/ml



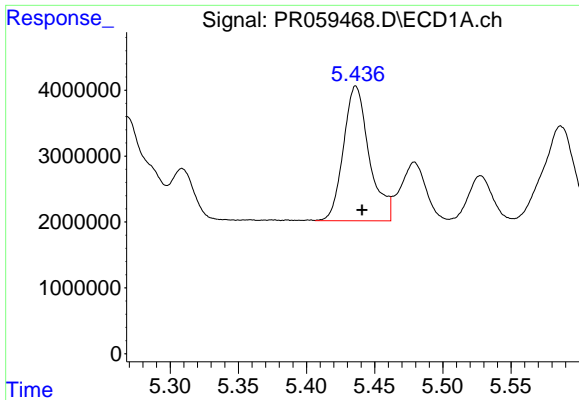
#22 AR-1248-2

R.T.: 5.222 min
 Delta R.T.: -0.005 min
 Response: 22505855
 Conc: 308.71 ng/ml



#22 AR-1248-2

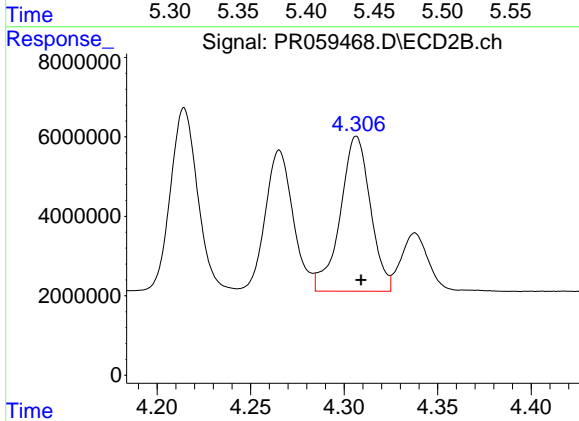
R.T.: 4.265 min
 Delta R.T.: -0.002 min
 Response: 36762056
 Conc: 313.54 ng/ml



#23 AR-1248-3

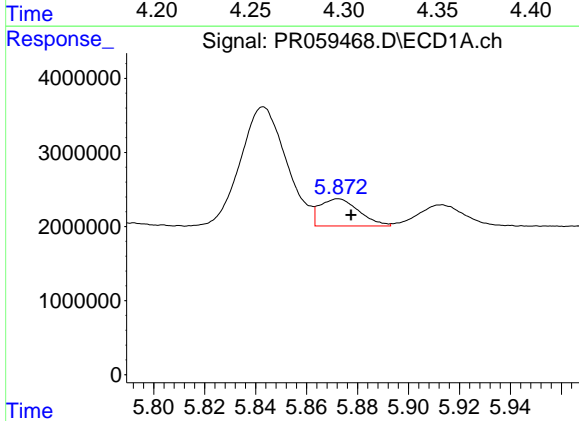
R.T.: 5.436 min
 Delta R.T.: -0.005 min
 Response: 26921837
 Conc: 313.50 ng/ml

Instrument :
 ECD_R
 ClientSampleId :



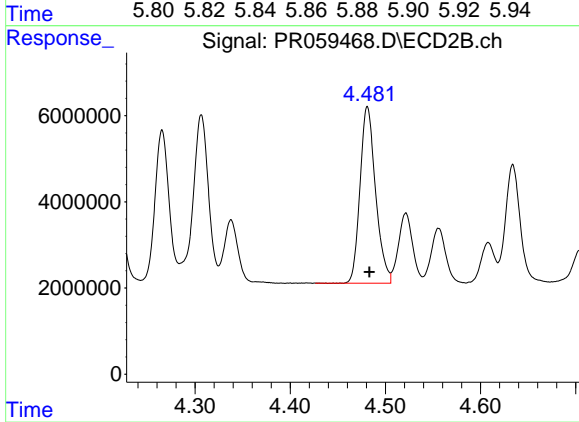
#23 AR-1248-3

R.T.: 4.307 min
 Delta R.T.: -0.002 min
 Response: 43821314
 Conc: 364.91 ng/ml



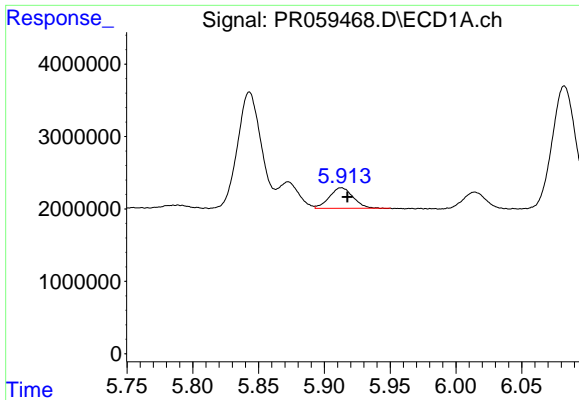
#24 AR-1248-4

R.T.: 5.872 min
 Delta R.T.: -0.005 min
 Response: 3912080
 Conc: 41.11 ng/ml



#24 AR-1248-4

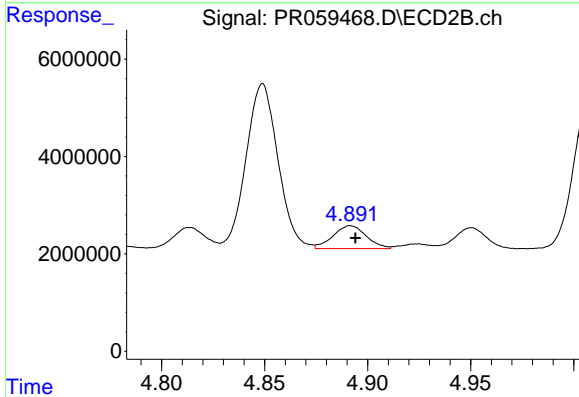
R.T.: 4.481 min
 Delta R.T.: -0.002 min
 Response: 46460125
 Conc: 315.48 ng/ml



#25 AR-1248-5

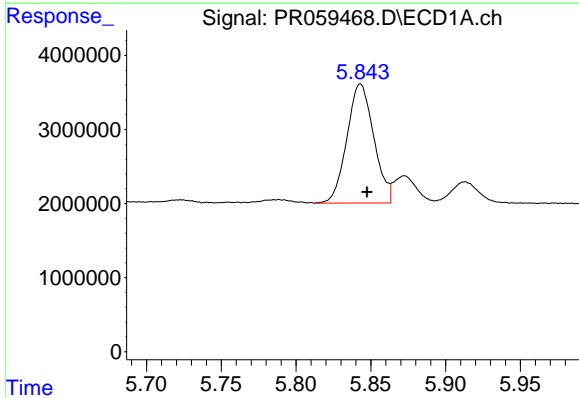
R.T.: 5.913 min
 Delta R.T.: -0.005 min
 Response: 3517954
 Conc: 38.15 ng/ml

Instrument :
 ECD_R
 ClientSampleId :



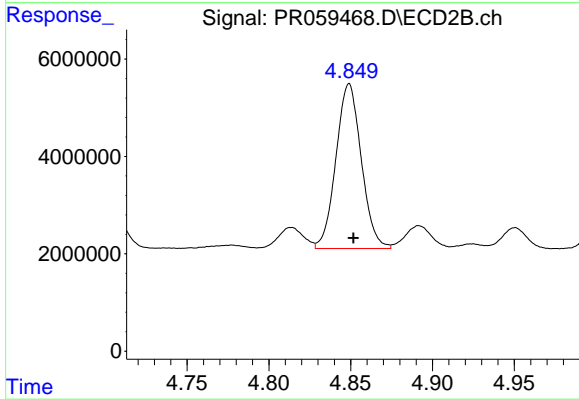
#25 AR-1248-5

R.T.: 4.892 min
 Delta R.T.: -0.002 min
 Response: 5284330
 Conc: 35.78 ng/ml



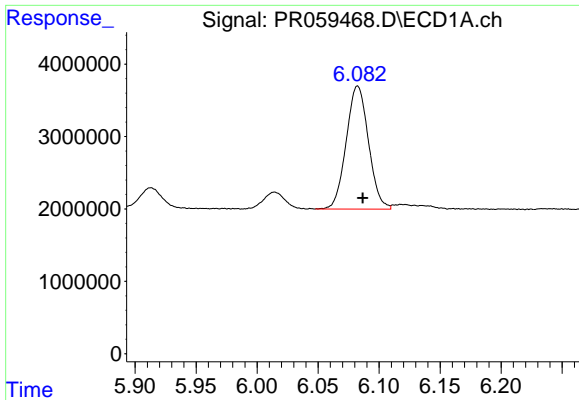
#26 AR-1254-1

R.T.: 5.843 min
 Delta R.T.: -0.004 min
 Response: 20117368
 Conc: 212.97 ng/ml



#26 AR-1254-1

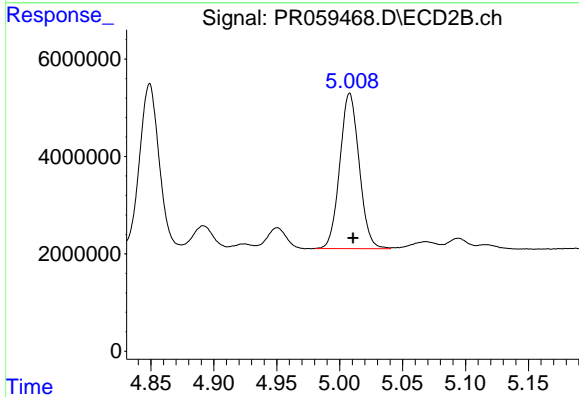
R.T.: 4.849 min
 Delta R.T.: -0.003 min
 Response: 36507929
 Conc: 162.06 ng/ml



#27 AR-1254-2

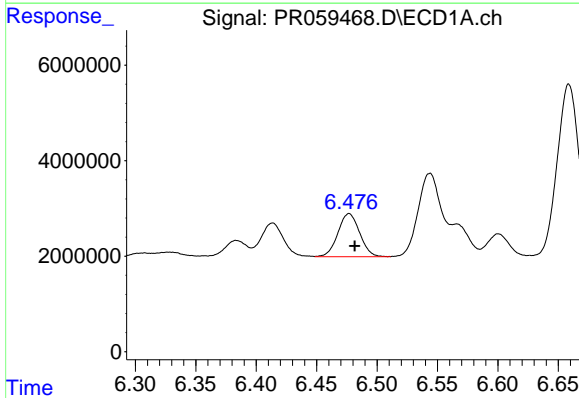
R.T.: 6.082 min
 Delta R.T.: -0.004 min
 Response: 21635056
 Conc: 148.19 ng/ml

Instrument :
 ECD_R
 ClientSampleId :



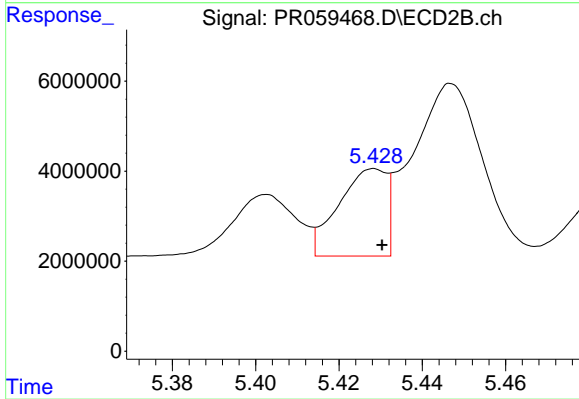
#27 AR-1254-2

R.T.: 5.008 min
 Delta R.T.: -0.003 min
 Response: 34189555
 Conc: 177.76 ng/ml



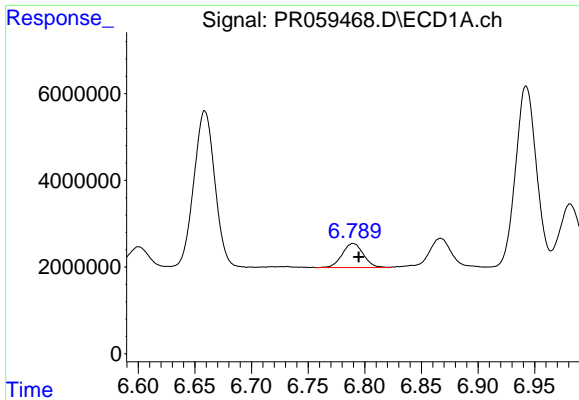
#28 AR-1254-3

R.T.: 6.477 min
 Delta R.T.: -0.005 min
 Response: 11333652
 Conc: 73.44 ng/ml



#28 AR-1254-3

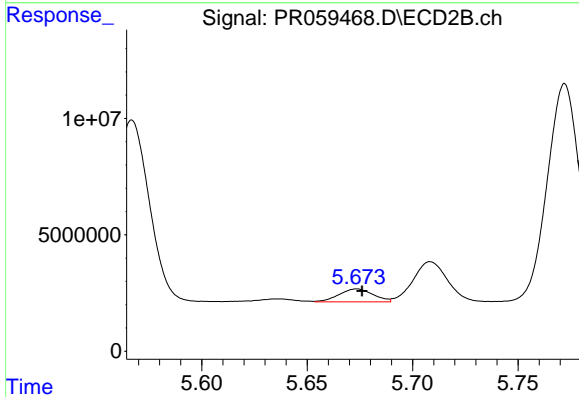
R.T.: 5.429 min
 Delta R.T.: -0.002 min
 Response: 15497674
 Conc: 49.33 ng/ml



#29 AR-1254-4

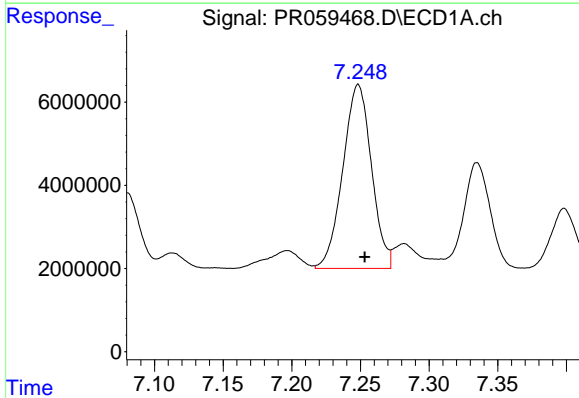
R.T.: 6.790 min
 Delta R.T.: -0.005 min
 Response: 7235070
 Conc: 62.56 ng/ml

Instrument :
 ECD_R
 ClientSampleId :



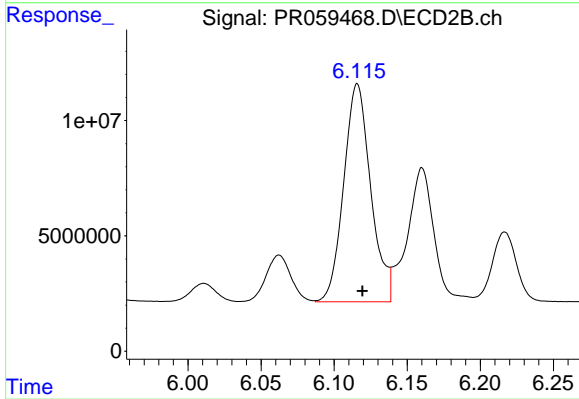
#29 AR-1254-4

R.T.: 5.674 min
 Delta R.T.: -0.002 min
 Response: 6257747
 Conc: 32.30 ng/ml



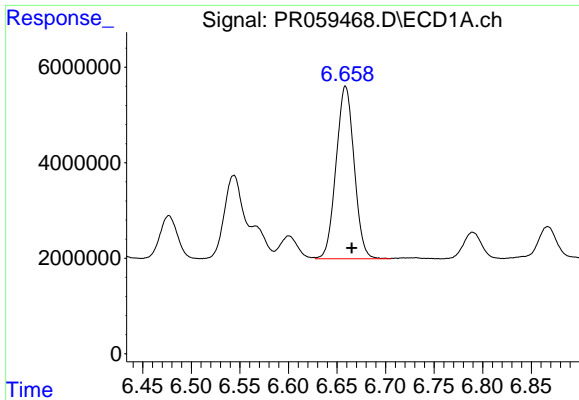
#30 AR-1254-5

R.T.: 7.248 min
 Delta R.T.: -0.005 min
 Response: 64121274
 Conc: 517.72 ng/ml



#30 AR-1254-5

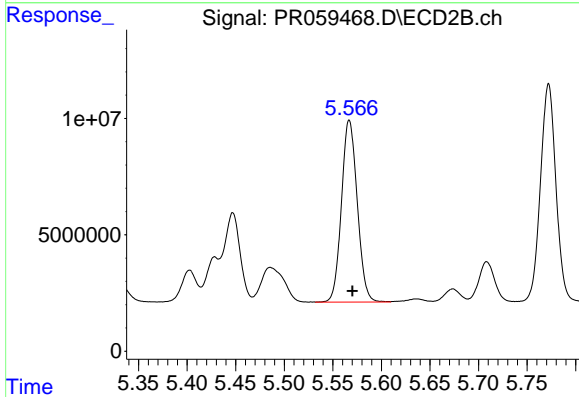
R.T.: 6.116 min
 Delta R.T.: -0.004 min
 Response: 121412157
 Conc: 450.44 ng/ml



#31 AR-1260-1

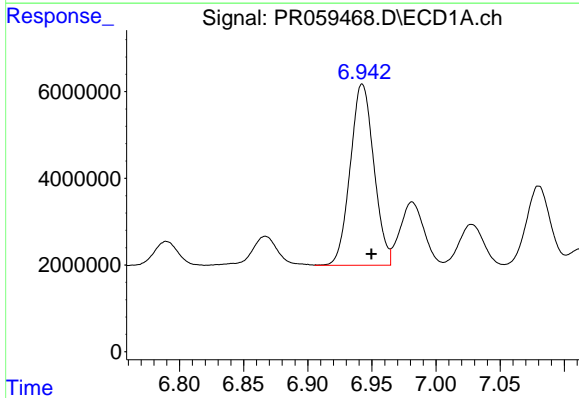
R.T.: 6.659 min
 Delta R.T.: -0.006 min
 Response: 46885634
 Conc: 400.41 ng/ml

Instrument :
 ECD_R
 ClientSampleId :



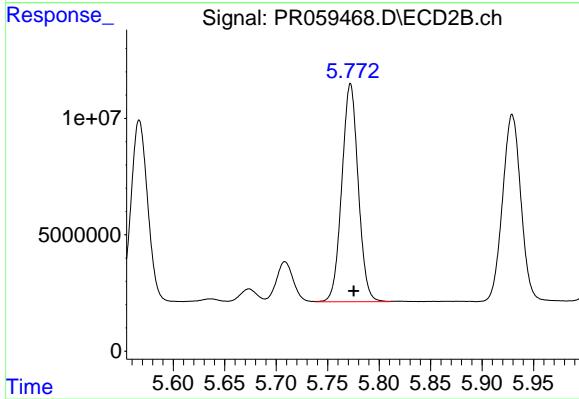
#31 AR-1260-1

R.T.: 5.567 min
 Delta R.T.: -0.003 min
 Response: 88397229
 Conc: 413.70 ng/ml



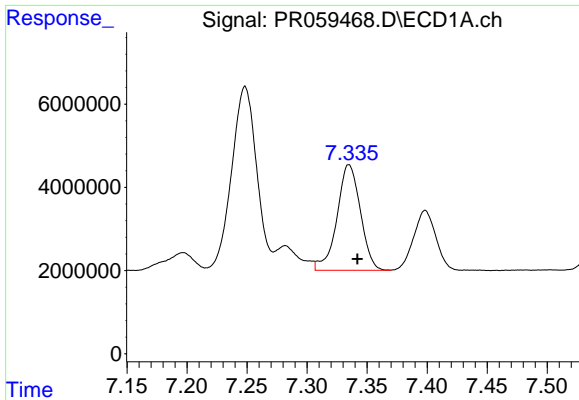
#32 AR-1260-2

R.T.: 6.942 min
 Delta R.T.: -0.007 min
 Response: 53668772
 Conc: 386.76 ng/ml



#32 AR-1260-2

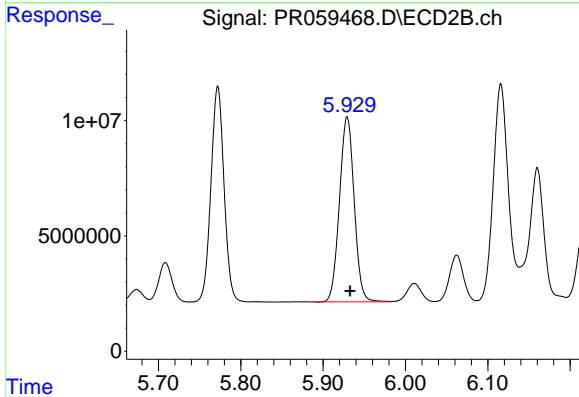
R.T.: 5.772 min
 Delta R.T.: -0.003 min
 Response: 103810830
 Conc: 403.70 ng/ml



#33 AR-1260-3

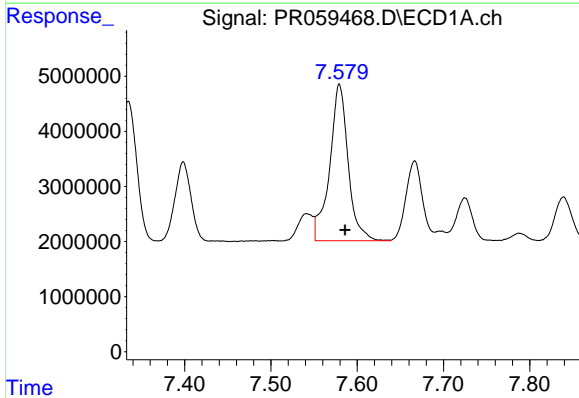
R.T.: 7.335 min
 Delta R.T.: -0.007 min
 Response: 34511791
 Conc: 334.20 ng/ml

Instrument :
 ECD_R
 ClientSampleId :



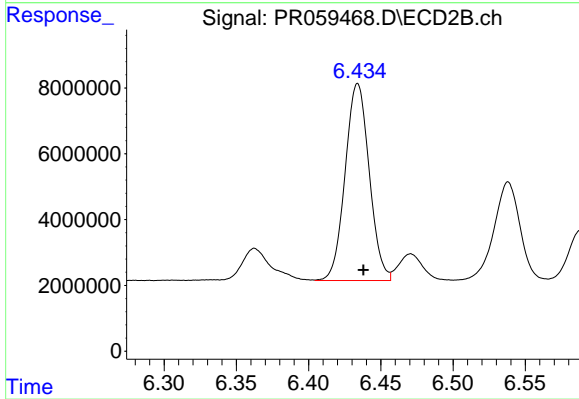
#33 AR-1260-3

R.T.: 5.929 min
 Delta R.T.: -0.004 min
 Response: 99556791
 Conc: 422.50 ng/ml



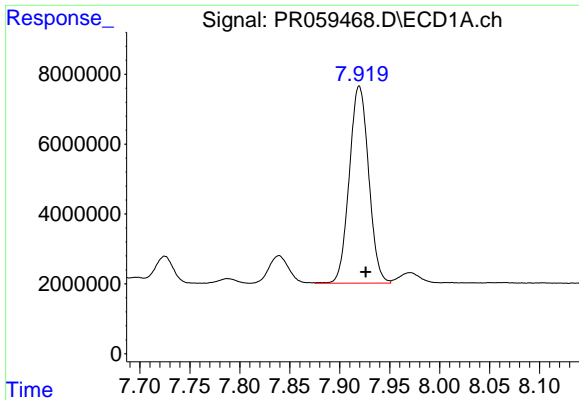
#34 AR-1260-4

R.T.: 7.579 min
 Delta R.T.: -0.007 min
 Response: 42370099
 Conc: 361.71 ng/ml



#34 AR-1260-4

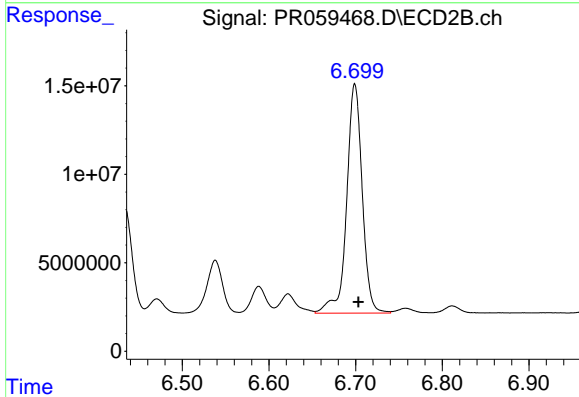
R.T.: 6.434 min
 Delta R.T.: -0.004 min
 Response: 69351738
 Conc: 358.92 ng/ml



#35 AR-1260-5

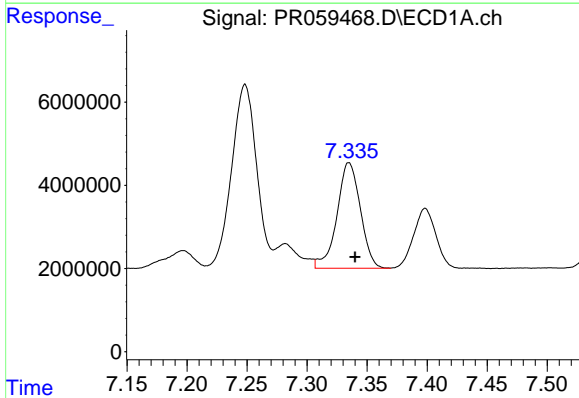
R.T.: 7.920 min
Delta R.T.: -0.006 min
Response: 76089654
Conc: 334.83 ng/ml

Instrument :
ECD_R
ClientSampleId :



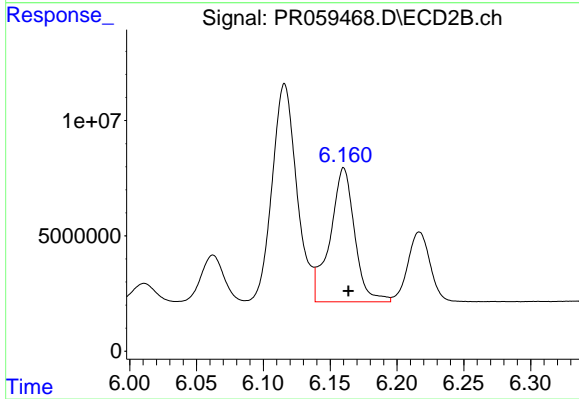
#35 AR-1260-5

R.T.: 6.699 min
Delta R.T.: -0.004 min
Response: 161988232
Conc: 361.31 ng/ml



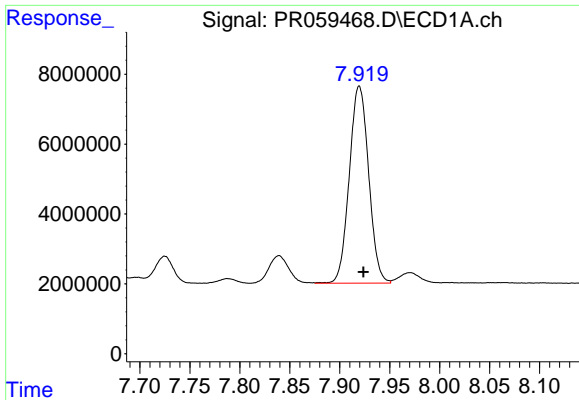
#36 AR-1262-1

R.T.: 7.335 min
Delta R.T.: -0.005 min
Response: 34511791
Conc: 228.78 ng/ml



#36 AR-1262-1

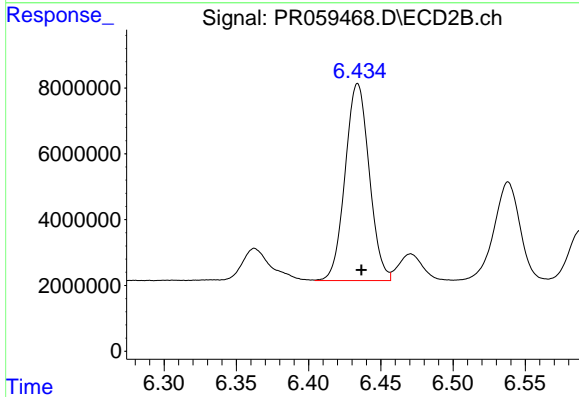
R.T.: 6.160 min
Delta R.T.: -0.004 min
Response: 74416728
Conc: 257.58 ng/ml



#37 AR-1262-2

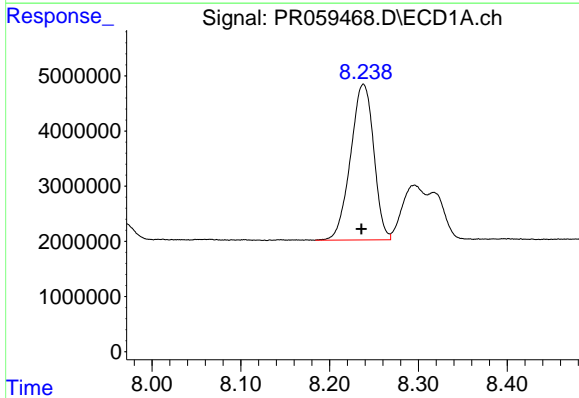
R.T.: 7.920 min
 Delta R.T.: -0.004 min
 Response: 76089654
 Conc: 291.01 ng/ml

Instrument :
 ECD_R
 ClientSampleId :



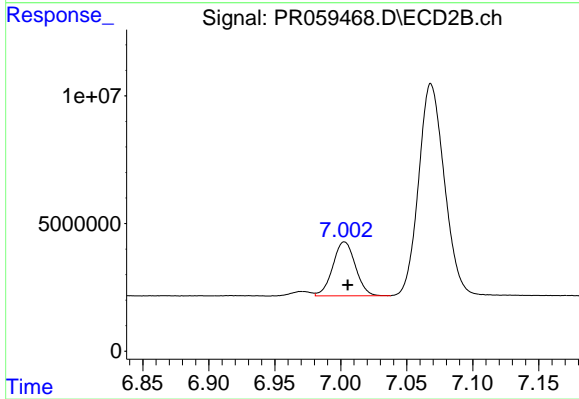
#37 AR-1262-2

R.T.: 6.434 min
 Delta R.T.: -0.003 min
 Response: 69351738
 Conc: 271.82 ng/ml



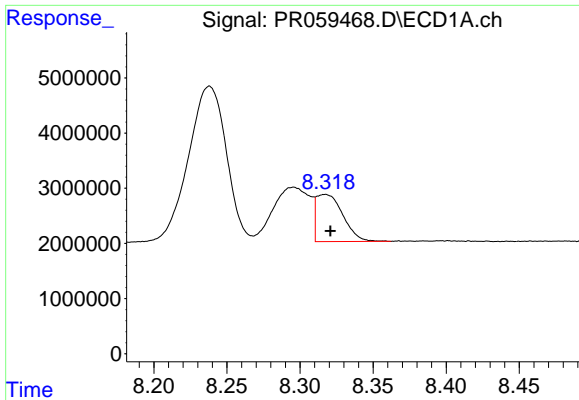
#38 AR-1262-3

R.T.: 8.238 min
 Delta R.T.: 0.002 min
 Response: 51238357
 Conc: 280.13 ng/ml



#38 AR-1262-3

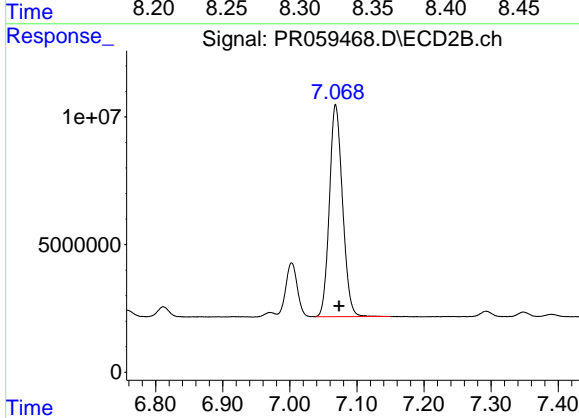
R.T.: 7.003 min
 Delta R.T.: -0.003 min
 Response: 25281090
 Conc: 131.89 ng/ml



#39 AR-1262-4

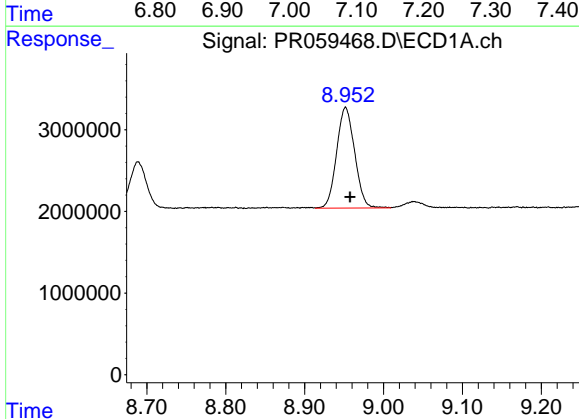
R.T.: 8.317 min
 Delta R.T.: -0.004 min
 Response: 10846808
 Conc: 123.56 ng/ml

Instrument :
 ECD_R
 ClientSampleId :



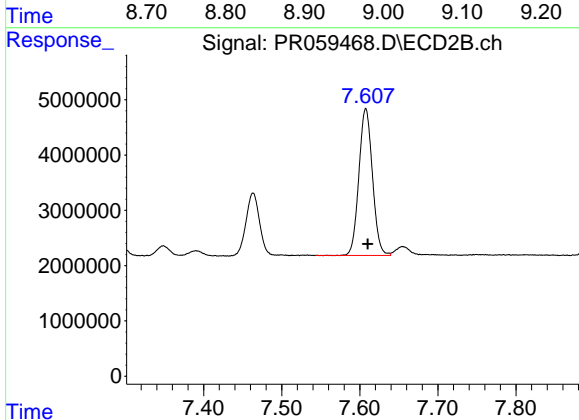
#39 AR-1262-4

R.T.: 7.068 min
 Delta R.T.: -0.005 min
 Response: 112930376
 Conc: 310.16 ng/ml



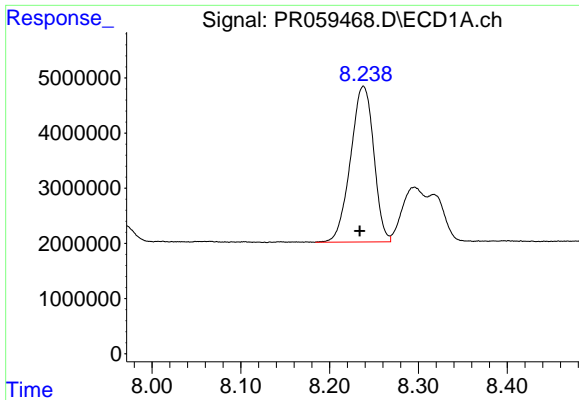
#40 AR-1262-5

R.T.: 8.952 min
 Delta R.T.: -0.006 min
 Response: 19601953
 Conc: 196.36 ng/ml



#40 AR-1262-5

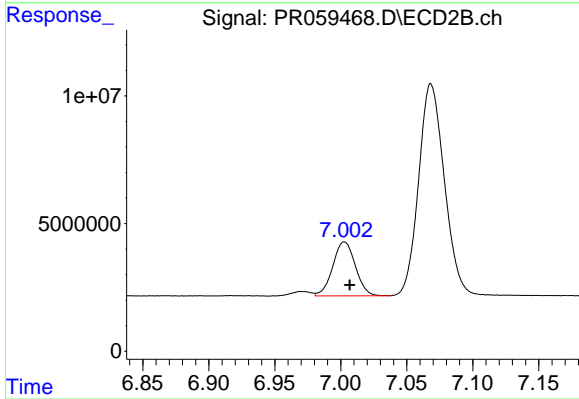
R.T.: 7.608 min
 Delta R.T.: -0.002 min
 Response: 32025189
 Conc: 198.64 ng/ml



#41 AR-1268-1

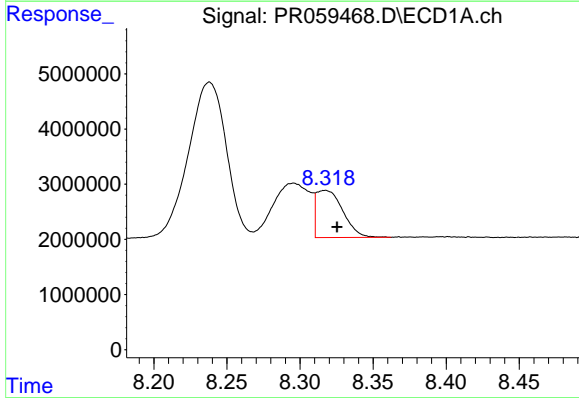
R.T.: 8.238 min
 Delta R.T.: 0.004 min
 Response: 51238357
 Conc: 120.06 ng/ml

Instrument :
 ECD_R
 ClientSampleId :



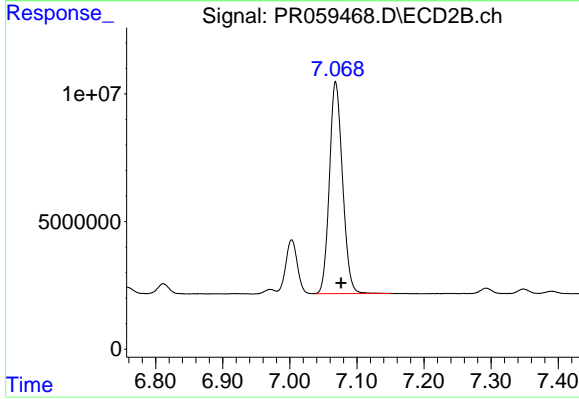
#41 AR-1268-1

R.T.: 7.003 min
 Delta R.T.: -0.004 min
 Response: 25281090
 Conc: 31.31 ng/ml



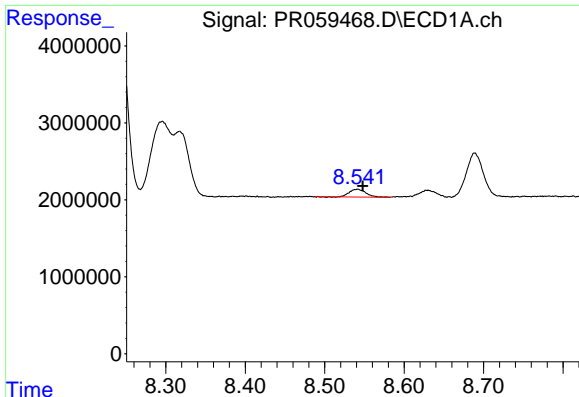
#42 AR-1268-2

R.T.: 8.317 min
 Delta R.T.: -0.008 min
 Response: 10846808
 Conc: 28.08 ng/ml



#42 AR-1268-2

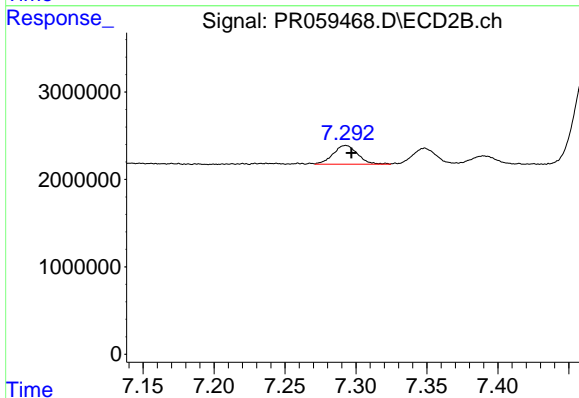
R.T.: 7.068 min
 Delta R.T.: -0.008 min
 Response: 112930376
 Conc: 154.38 ng/ml



#43 AR-1268-3

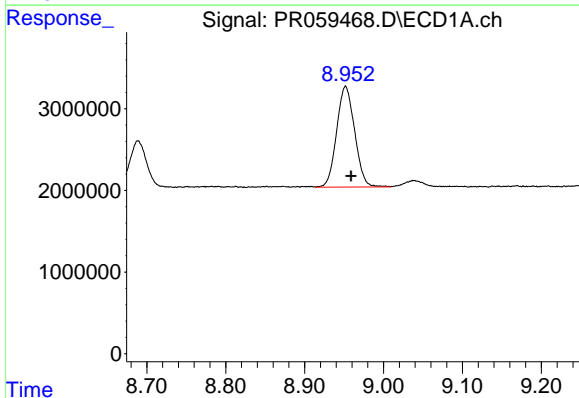
R.T.: 8.542 min
 Delta R.T.: -0.006 min
 Response: 1469140
 Conc: 4.36 ng/ml

Instrument :
 ECD_R
 ClientSampleId :



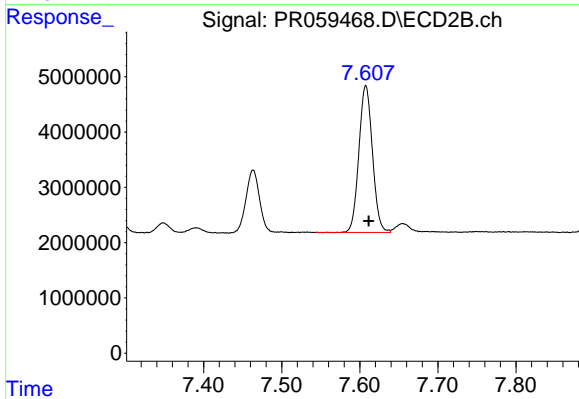
#43 AR-1268-3

R.T.: 7.293 min
 Delta R.T.: -0.004 min
 Response: 2570758
 Conc: 4.10 ng/ml



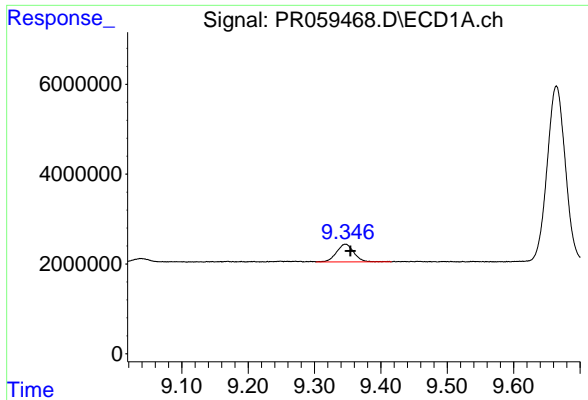
#44 AR-1268-4

R.T.: 8.952 min
 Delta R.T.: -0.007 min
 Response: 19601953
 Conc: 132.18 ng/ml



#44 AR-1268-4

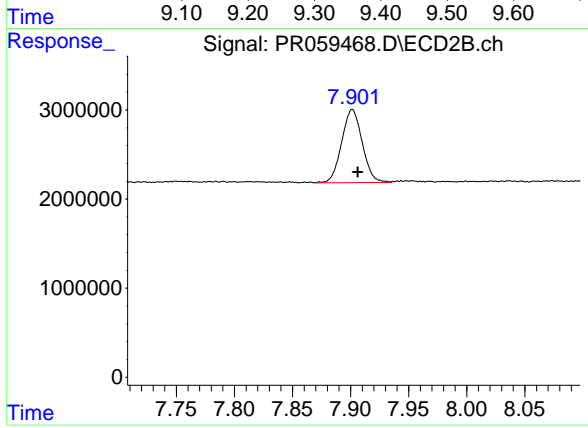
R.T.: 7.608 min
 Delta R.T.: -0.004 min
 Response: 32025189
 Conc: 128.73 ng/ml



#45 AR-1268-5

R.T.: 9.347 min
Delta R.T.: -0.008 min
Response: 7192902
Conc: 6.64 ng/ml

Instrument :
ECD_R
ClientSampleId :



#45 AR-1268-5

R.T.: 7.901 min
Delta R.T.: -0.005 min
Response: 10126669
Conc: 5.20 ng/ml