

Data Path : Z:\pestpcbsrv\HPCHEM1\ECD_R\Data\PR021120\
 Data File : PR044731.D
 Signal(s) : Signal #1: ECD1A.ch Signal #2: ECD2B.ch
 Acq On : 11 Feb 2020 19:59
 Operator : AJ\MA
 Sample : AR1248CCC400
 Misc :
 ALS Vial : 21 Sample Multiplier: 1

Instrument :
 ECD_R
 ClientSampleId :
 AR1248394

Integration File signal 1: autoint1.e
 Integration File signal 2: autoint2.e
 Quant Time: Feb 12 00:19:29 2020
 Quant Method : Z:\pestpcbsrv\HPCHEM1\ECD_R\Method\PR012620CLP.M
 Quant Title : GC EXTRACTABLES
 QLast Update : Fri Jan 24 22:56:32 2020
 Response via : Initial Calibration
 Integrator: ChemStation

Volume Inj. : 1 µl
 Signal #1 Phase : ZB MR1 Signal #2 Phase: ZB MR2
 Signal #1 Info : 30Mx0.32mmx 0.5µm Signal #2 Info : 30M x 0.32mm x 0.25µm

Compound	RT#1	RT#2	Resp#1	Resp#2	ng/ml	ng/ml

System Monitoring Compounds						
1) SA Tetrachlo...	4.690	3.954	157.0E6	289.9E6	21.785	19.475
2) SA Decachlor...	10.573	9.025	286.1E6	501.6E6	38.622	37.480
Target Compounds						
3) L1 AR-1016-1	5.865	5.042	68835653	89022119	247.024	219.806
4) L1 AR-1016-2	5.888	5.062	82129998	93902136	208.924	167.673
5) L1 AR-1016-3	5.950	5.240	39620806	60704214	169.375	204.804
6) L1 AR-1016-4	6.049	5.279	43022230	114.2E6	220.133	488.161 #
7) L1 AR-1016-5	6.343	5.495	103.3E6	157.3E6	534.422	472.288
8) L2 AR-1221-1	4.895	0.000	1017754	0	12.579	N.D. #
9) L2 AR-1221-2	4.997	4.255	3125323	7168127	55.432	59.513
10) L2 AR-1221-3	5.064	4.327	6758414	16125364	35.025	41.010
11) L3 AR-1232-1	5.064	4.327	6758414	16125364	46.794	54.372
12) L3 AR-1232-2	5.597	5.062	29660785	93902136	405.219	403.890
13) L3 AR-1232-3	5.888	5.240	82129998	60704214	519.824	510.127
14) L3 AR-1232-4	6.049	5.322	43022230	118.4E6	550.257	1138.221 #
15) L3 AR-1232-5	6.136	5.495	91665959	157.3E6	1563.014	1273.277
16) L4 AR-1242-1	5.865	5.042	68835653	89022119	323.858	289.085
17) L4 AR-1242-2	5.888	5.062	82129998	93902136	272.972	219.869
18) L4 AR-1242-3	5.950	5.240	39620806	60704214	220.130	272.685
19) L4 AR-1242-4	6.049	5.322	43022230	118.4E6	285.778	549.684 #
20) L4 AR-1242-5	6.785	5.846	116.8E6	267.1E6	667.006	729.796
21) L5 AR-1248-1	5.865	5.042	68835653	89022119	414.434	361.229
22) L5 AR-1248-2	6.136	5.279	91665959	114.2E6	409.890	381.409
23) L5 AR-1248-3	6.343	5.322	103.3E6	118.4E6	412.087	379.935
24) L5 AR-1248-4	6.746	5.495	124.0E6	157.3E6	406.199	381.088
25) L5 AR-1248-5	6.785	5.888	116.8E6	188.1E6	405.106	381.979
26) L6 AR-1254-1	6.719	5.846	92499781	267.1E6	304.460	361.782
27) L6 AR-1254-2	6.943	5.994	120.1E6	85685435	257.141	126.570 #
28) L6 AR-1254-3	7.305	6.398	64673684	120.3E6	127.875	107.093
29) L6 AR-1254-4	7.590	6.626	46206608	98717471	117.037	116.310
30) L6 AR-1254-5	8.009	7.043	11249610	21057081	26.094	19.693
31) L7 AR-1260-1	7.468	6.544	7687897	60935903	21.138	81.785 #
32) L7 AR-1260-2	7.718	6.714	10942196	15932186	24.125	14.088 #
33) L7 AR-1260-3	8.077	6.869	2916477	14217129	8.237	15.586 #
34) L7 AR-1260-4	8.311	7.379	5546074	5292142	13.664	6.437 #
35) L7 AR-1260-5	8.653	7.581	4080094	15748131	4.642	6.379 #
36) L8 AR-1262-1	0.000	7.043	0	21057081	N.D.	35.399 #
37) L8 AR-1262-2	8.653	7.581	4080094	15748131	4.040	5.793 #
38) L8 AR-1262-3	8.999	7.864	1373415	-1477357	2.042	N.D. #
39) L8 AR-1262-4	9.081	7.929	1096196	8231871	2.131	4.560 #
40) L8 AR-1262-5	9.775	0.000	1312462	0	3.507	N.D. #
41) L9 AR-1268-1	8.981	7.864	1147422	-1477357	1.010	N.D. #
42) L9 AR-1268-2	9.081	7.929	1096196	8231871	1.019	3.265 #

Data Path : Z:\pestpcbsrv\HPCHEM1\ECD_R\Data\PR021120\
 Data File : PR044731.D
 Signal(s) : Signal #1: ECD1A.ch Signal #2: ECD2B.ch
 Acq On : 11 Feb 2020 19:59
 Operator : AJ\MA
 Sample : AR1248CCC400
 Misc :
 ALS Vial : 21 Sample Multiplier: 1

Instrument :
 ECD_R
 ClientSampleId :
 AR1248394

Integration File signal 1: autoint1.e
 Integration File signal 2: autoint2.e
 Quant Time: Feb 12 00:19:29 2020
 Quant Method : Z:\pestpcbsrv\HPCHEM1\ECD_R\Method\PR012620CLP.M
 Quant Title : GC EXTRACTABLES
 QLast Update : Fri Jan 24 22:56:32 2020
 Response via : Initial Calibration
 Integrator: ChemStation

Volume Inj. : 1 µl
 Signal #1 Phase : ZB MR1 Signal #2 Phase: ZB MR2
 Signal #1 Info : 30Mx0.32mmx 0.5µm Signal #2 Info : 30M x 0.32mm x 0.25µm

	Compound	RT#1	RT#2	Resp#1	Resp#2	ng/ml	ng/ml	
44)	L9 AR-1268-4	9.775	0.000	1312462	0	3.275	N.D.	#
45)	L9 AR-1268-5	10.214	0.000	2389195	0	0.752	N.D.	#

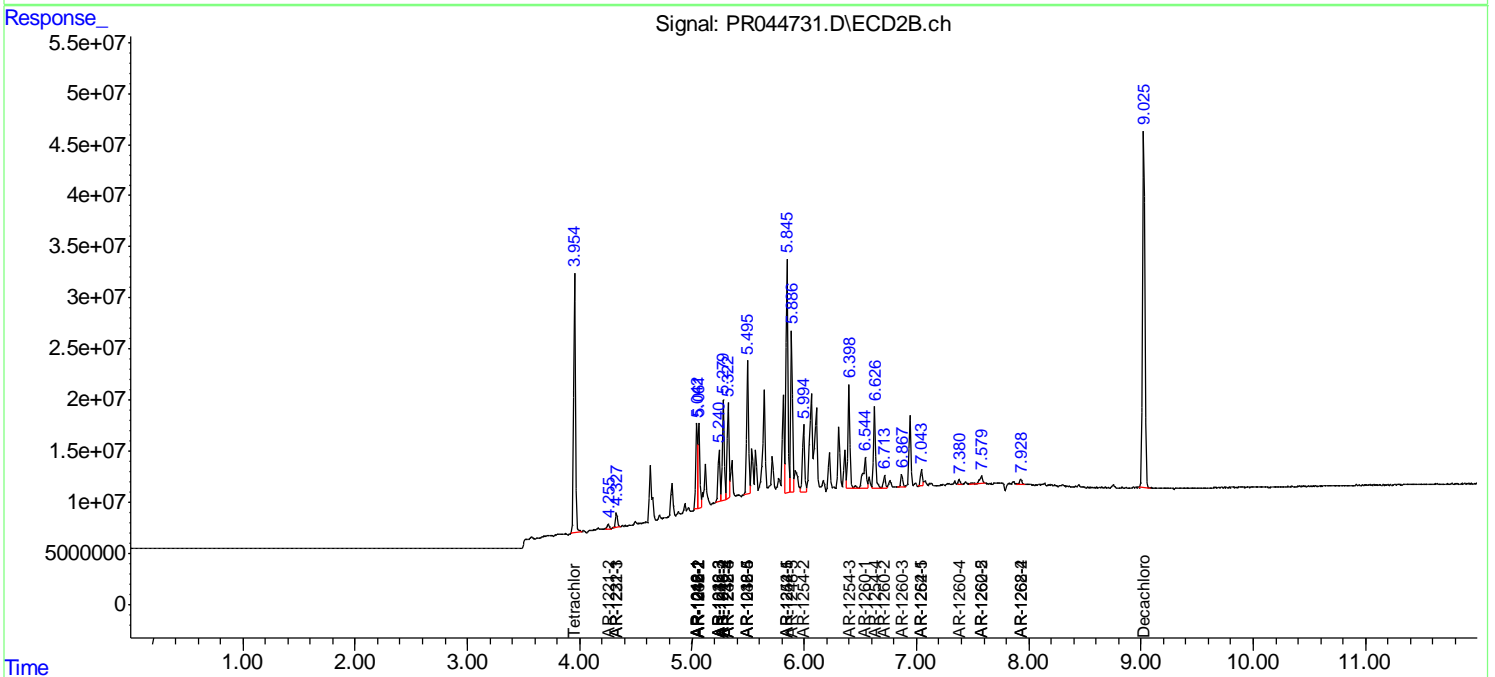
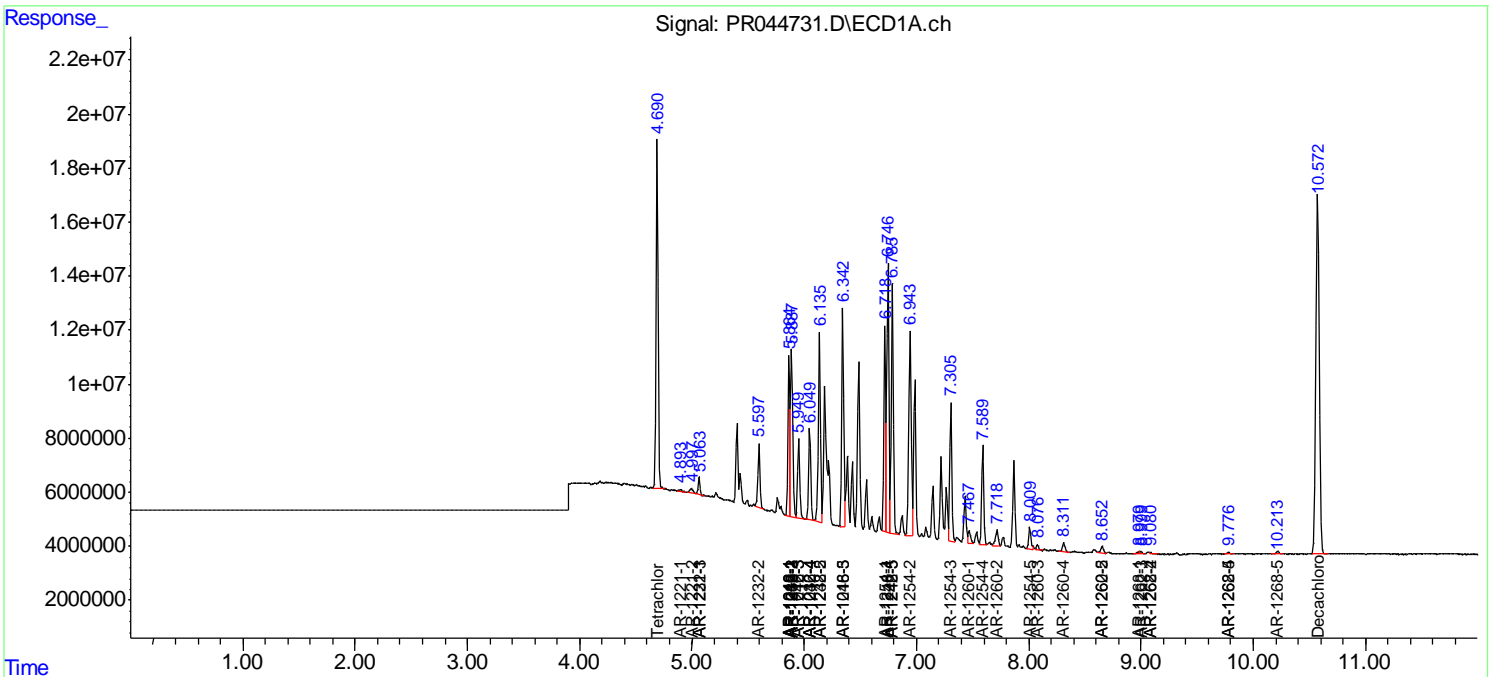
(f)=RT Delta > 1/2 Window (#)=Amounts differ by > 25% (m)=manual int.

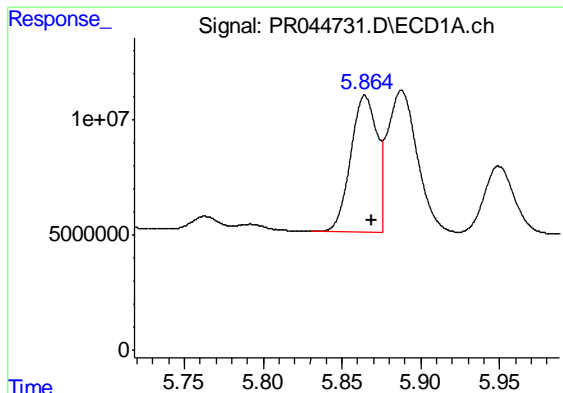
Data Path : Z:\pestpcbsrv\HPCHEM1\ECD_R\Data\PR021120\
 Data File : PR044731.D
 Signal(s) : Signal #1: ECD1A.ch Signal #2: ECD2B.ch
 Acq On : 11 Feb 2020 19:59
 Operator : AJ\MA
 Sample : AR1248CCC400
 Misc :
 ALS Vial : 21 Sample Multiplier: 1

Instrument :
 ECD_R
Client Sampled :
 AR1248394

Integration File signal 1: autoint1.e
 Integration File signal 2: autoint2.e
 Quant Time: Feb 12 00:19:29 2020
 Quant Method : Z:\pestpcbsrv\HPCHEM1\ECD_R\Method\PR012620CLP.M
 Quant Title : GC EXTRACTABLES
 QLast Update : Fri Jan 24 22:56:32 2020
 Response via : Initial Calibration
 Integrator: ChemStation

Volume Inj. : 1 µl
 Signal #1 Phase : ZB MR1 Signal #2 Phase: ZB MR2
 Signal #1 Info : 30Mx0.32mmx 0.5µm Signal #2 Info : 30M x 0.32mm x 0.25µm

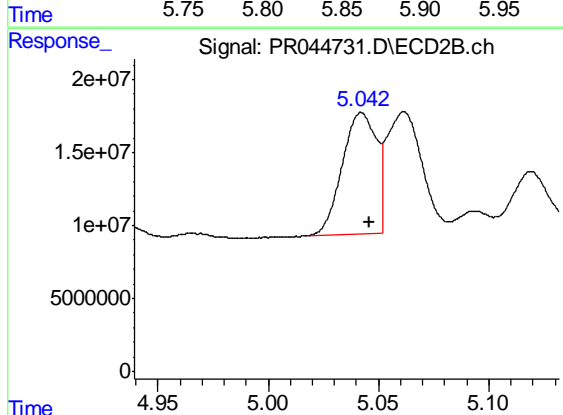




#3 AR-1016-1

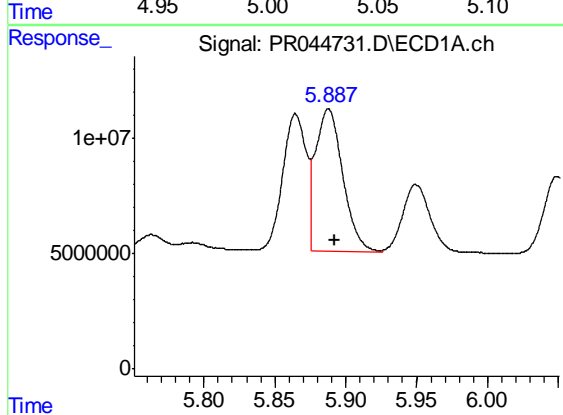
R.T.: 5.865 min
 Delta R.T.: -0.005 min
 Response: 68835653
 Conc: 247.02 ng/ml

Instrument :
 ECD_R
 ClientSampleId :
 AR1248394



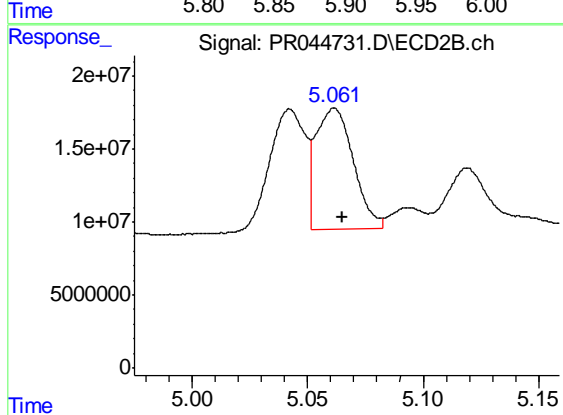
#3 AR-1016-1

R.T.: 5.042 min
 Delta R.T.: -0.003 min
 Response: 89022119
 Conc: 219.81 ng/ml



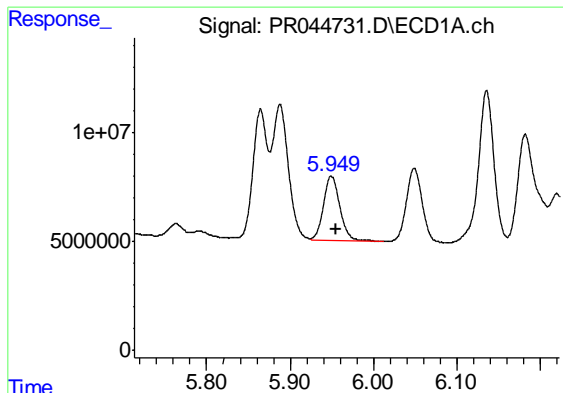
#4 AR-1016-2

R.T.: 5.888 min
 Delta R.T.: -0.004 min
 Response: 82129998
 Conc: 208.92 ng/ml



#4 AR-1016-2

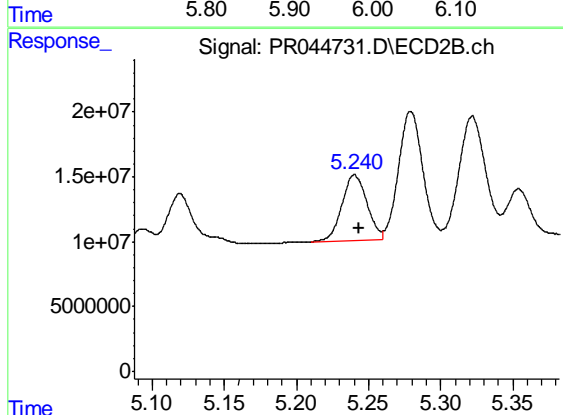
R.T.: 5.062 min
 Delta R.T.: -0.004 min
 Response: 93902136
 Conc: 167.67 ng/ml



#5 AR-1016-3

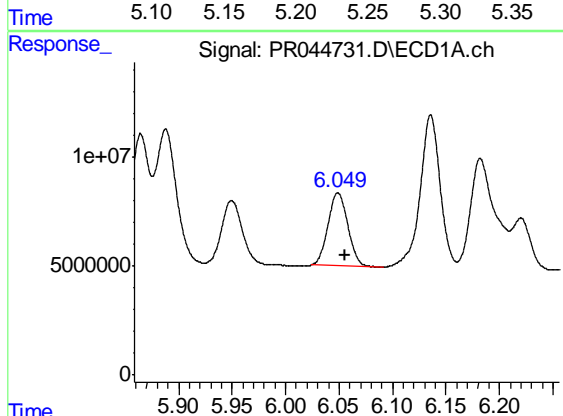
R.T.: 5.950 min
 Delta R.T.: -0.006 min
 Response: 39620806
 Conc: 169.37 ng/ml

Instrument :
 ECD_R
 ClientSampleId :
 AR1248394



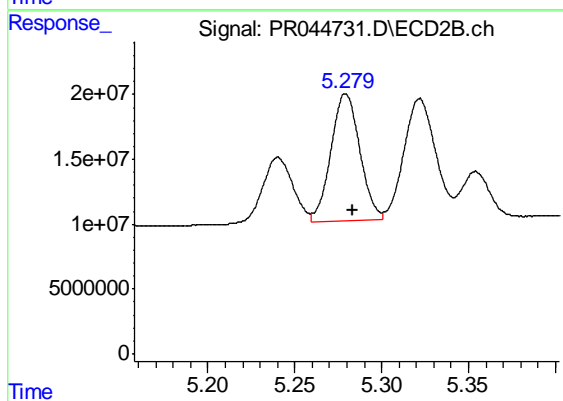
#5 AR-1016-3

R.T.: 5.240 min
 Delta R.T.: -0.003 min
 Response: 60704214
 Conc: 204.80 ng/ml



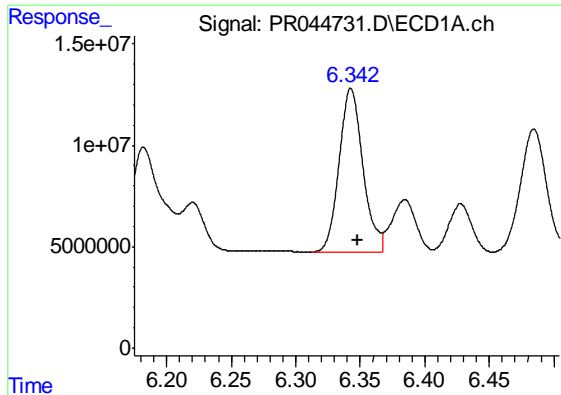
#6 AR-1016-4

R.T.: 6.049 min
 Delta R.T.: -0.006 min
 Response: 43022230
 Conc: 220.13 ng/ml



#6 AR-1016-4

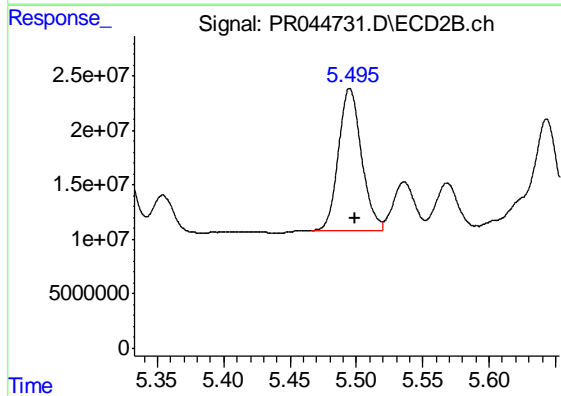
R.T.: 5.279 min
 Delta R.T.: -0.004 min
 Response: 114202875
 Conc: 488.16 ng/ml



#7 AR-1016-5

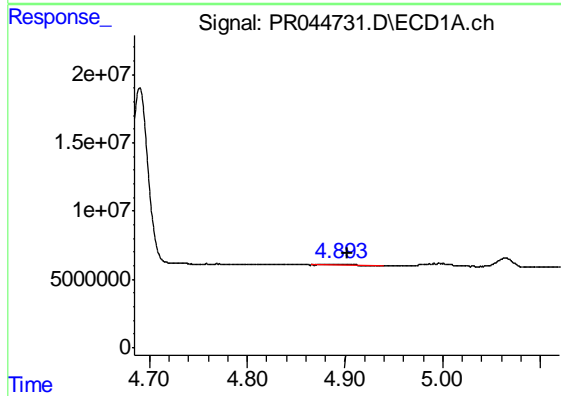
R.T.: 6.343 min
 Delta R.T.: -0.006 min
 Response: 103343311
 Conc: 534.42 ng/ml

Instrument :
 ECD_R
 ClientSampleId :
 AR1248394



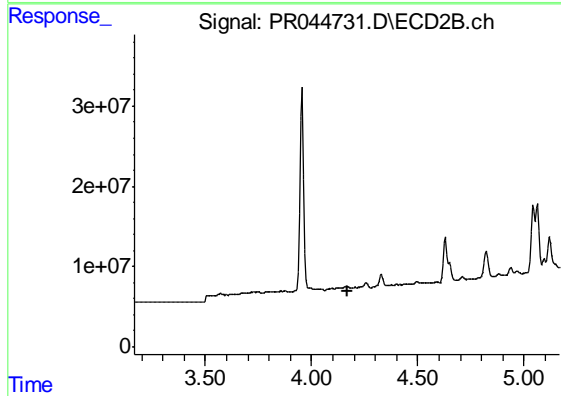
#7 AR-1016-5

R.T.: 5.495 min
 Delta R.T.: -0.004 min
 Response: 157339213
 Conc: 472.29 ng/ml



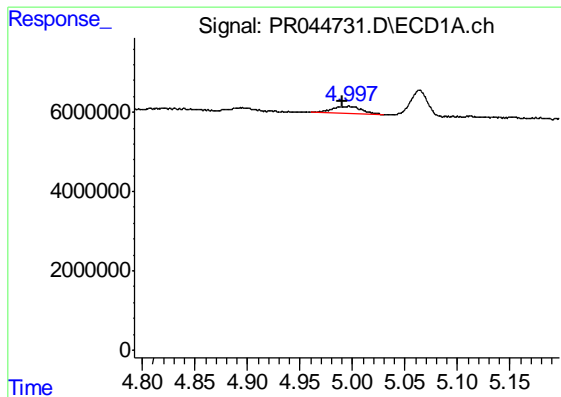
#8 AR-1221-1

R.T.: 4.895 min
 Delta R.T.: -0.007 min
 Response: 1017754
 Conc: 12.58 ng/ml



#8 AR-1221-1

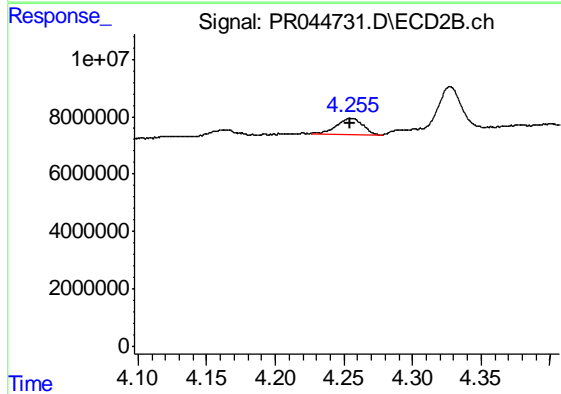
R.T.: 0.000 min
 Exp R.T. : 4.166 min
 Response: 0
 Conc: N.D.



#9 AR-1221-2

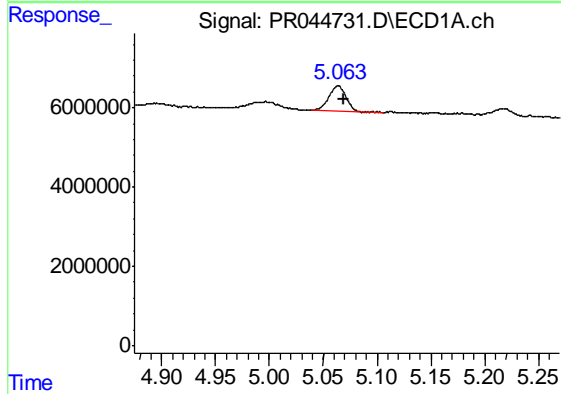
R.T.: 4.997 min
 Delta R.T.: 0.006 min
 Response: 3125323
 Conc: 55.43 ng/ml

Instrument :
 ECD_R
 ClientSampleId :
 AR1248394



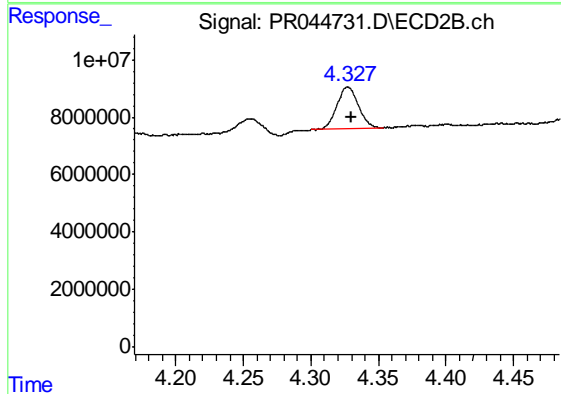
#9 AR-1221-2

R.T.: 4.255 min
 Delta R.T.: 0.001 min
 Response: 7168127
 Conc: 59.51 ng/ml



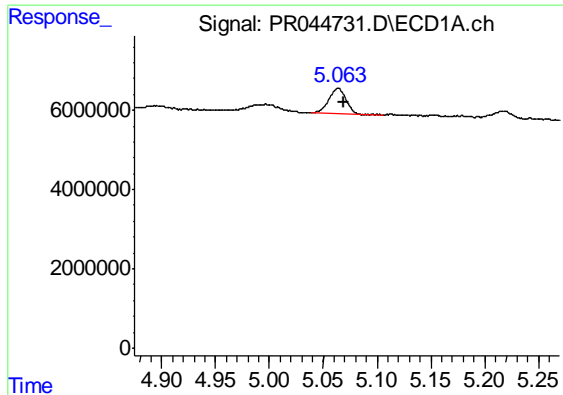
#10 AR-1221-3

R.T.: 5.064 min
 Delta R.T.: -0.005 min
 Response: 6758414
 Conc: 35.03 ng/ml



#10 AR-1221-3

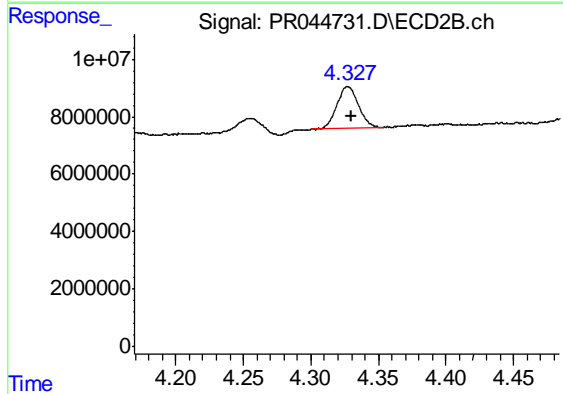
R.T.: 4.327 min
 Delta R.T.: -0.003 min
 Response: 16125364
 Conc: 41.01 ng/ml



#11 AR-1232-1

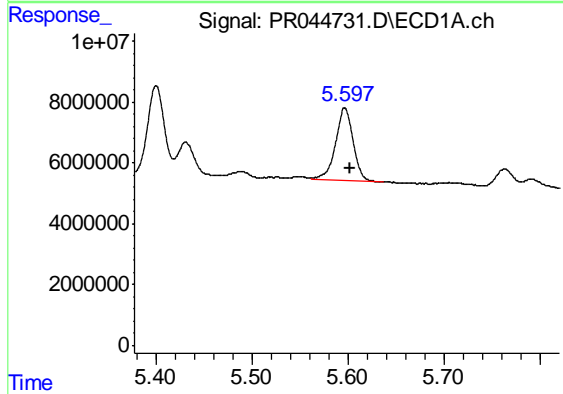
R.T.: 5.064 min
 Delta R.T.: -0.005 min
 Response: 6758414
 Conc: 46.79 ng/ml

Instrument :
 ECD_R
 ClientSampleId :
 AR1248394



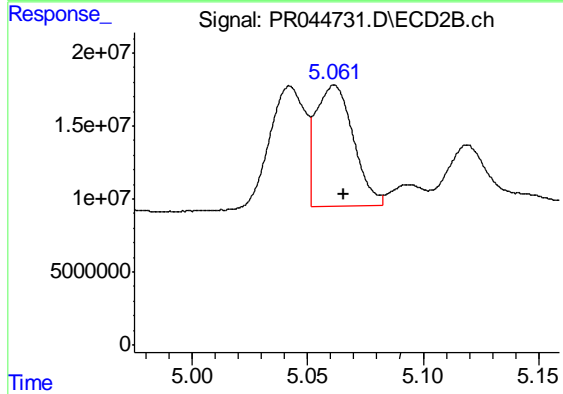
#11 AR-1232-1

R.T.: 4.327 min
 Delta R.T.: -0.003 min
 Response: 16125364
 Conc: 54.37 ng/ml



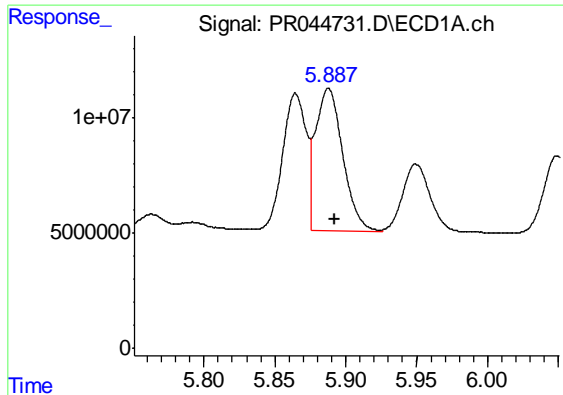
#12 AR-1232-2

R.T.: 5.597 min
 Delta R.T.: -0.005 min
 Response: 29660785
 Conc: 405.22 ng/ml



#12 AR-1232-2

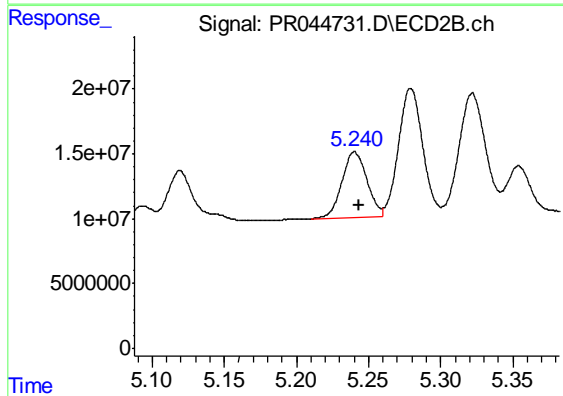
R.T.: 5.062 min
 Delta R.T.: -0.004 min
 Response: 93902136
 Conc: 403.89 ng/ml



#13 AR-1232-3

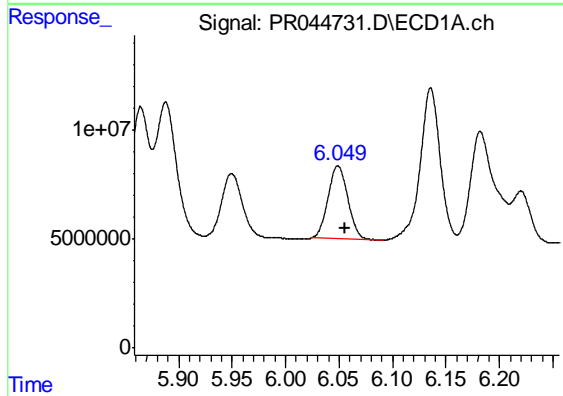
R.T.: 5.888 min
 Delta R.T.: -0.004 min
 Response: 82129998
 Conc: 519.82 ng/ml

Instrument :
 ECD_R
 ClientSampled :
 AR1248394



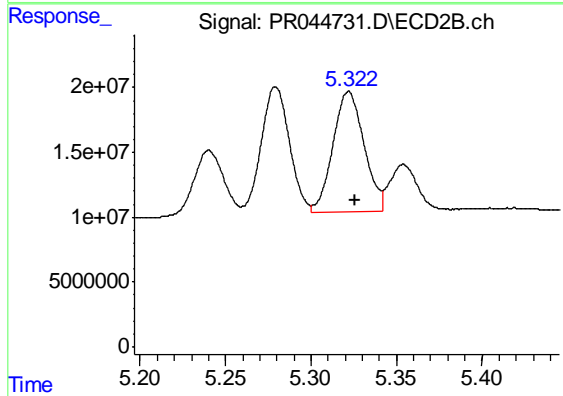
#13 AR-1232-3

R.T.: 5.240 min
 Delta R.T.: -0.003 min
 Response: 60704214
 Conc: 510.13 ng/ml



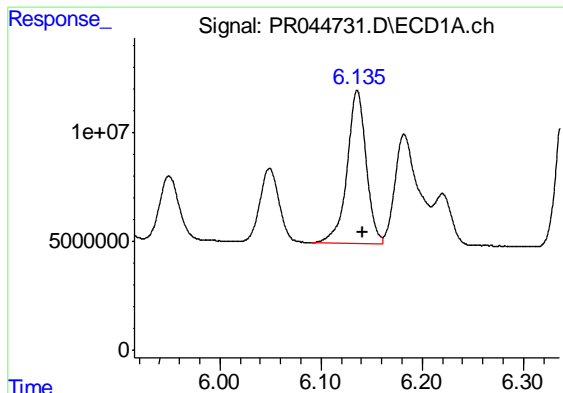
#14 AR-1232-4

R.T.: 6.049 min
 Delta R.T.: -0.006 min
 Response: 43022230
 Conc: 550.26 ng/ml



#14 AR-1232-4

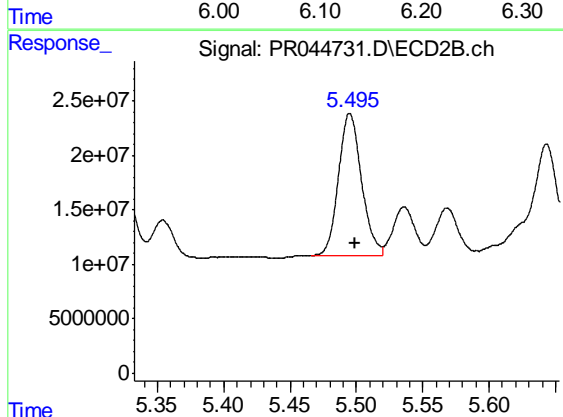
R.T.: 5.322 min
 Delta R.T.: -0.004 min
 Response: 118435708
 Conc: 1138.22 ng/ml



#15 AR-1232-5

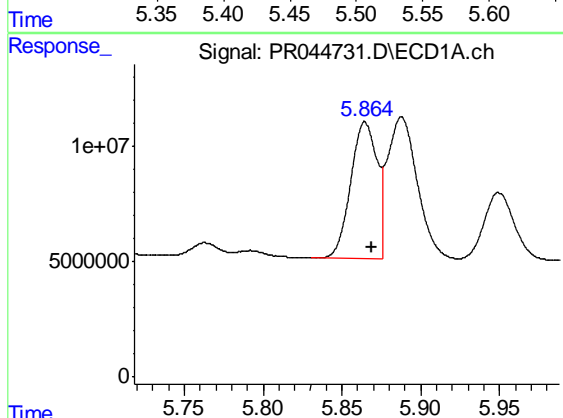
R.T.: 6.136 min
 Delta R.T.: -0.005 min
 Response: 91665959
 Conc: 1563.01 ng/ml

Instrument :
 ECD_R
 ClientSampleId :
 AR1248394



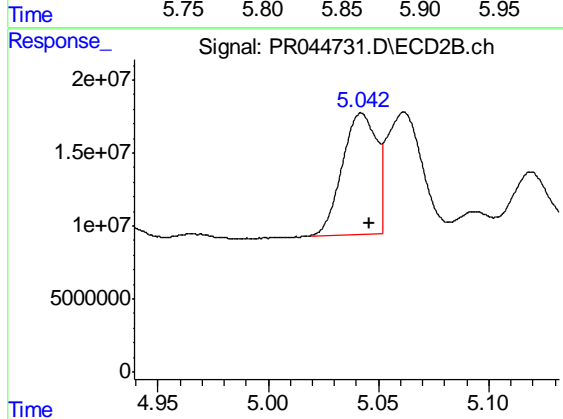
#15 AR-1232-5

R.T.: 5.495 min
 Delta R.T.: -0.004 min
 Response: 157339213
 Conc: 1273.28 ng/ml



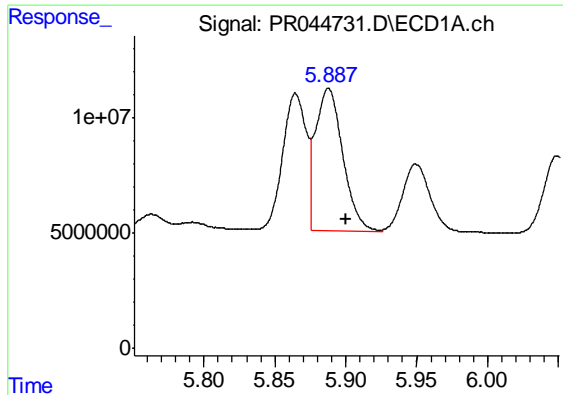
#16 AR-1242-1

R.T.: 5.865 min
 Delta R.T.: -0.004 min
 Response: 68835653
 Conc: 323.86 ng/ml



#16 AR-1242-1

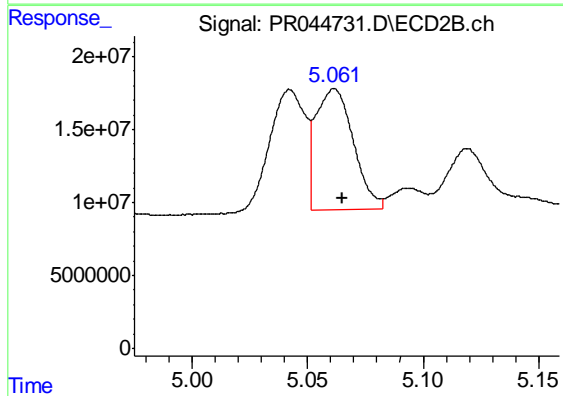
R.T.: 5.042 min
 Delta R.T.: -0.003 min
 Response: 89022119
 Conc: 289.09 ng/ml



#17 AR-1242-2

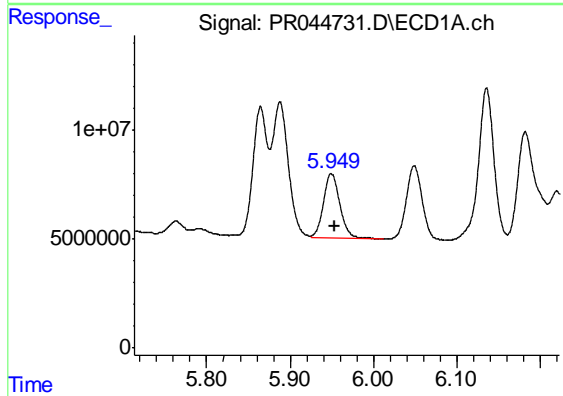
R.T.: 5.888 min
 Delta R.T.: -0.012 min
 Response: 82129998
 Conc: 272.97 ng/ml

Instrument :
 ECD_R
 ClientSampleId :
 AR1248394



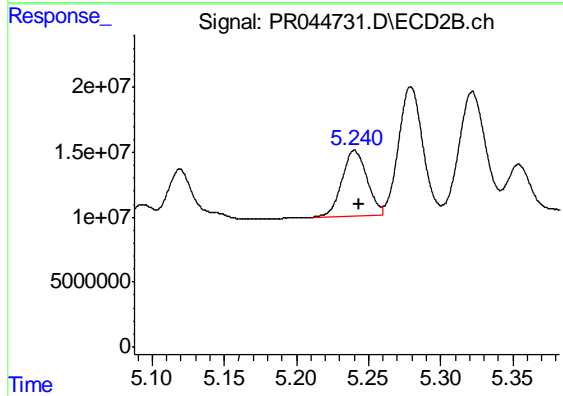
#17 AR-1242-2

R.T.: 5.062 min
 Delta R.T.: -0.003 min
 Response: 93902136
 Conc: 219.87 ng/ml



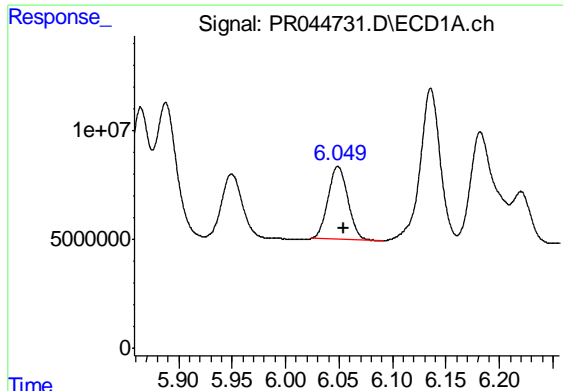
#18 AR-1242-3

R.T.: 5.950 min
 Delta R.T.: -0.005 min
 Response: 39620806
 Conc: 220.13 ng/ml



#18 AR-1242-3

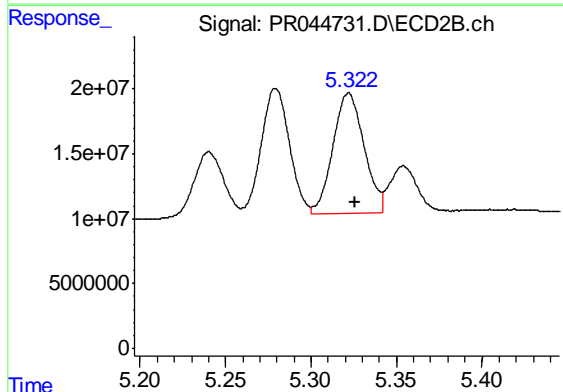
R.T.: 5.240 min
 Delta R.T.: -0.003 min
 Response: 60704214
 Conc: 272.69 ng/ml



#19 AR-1242-4

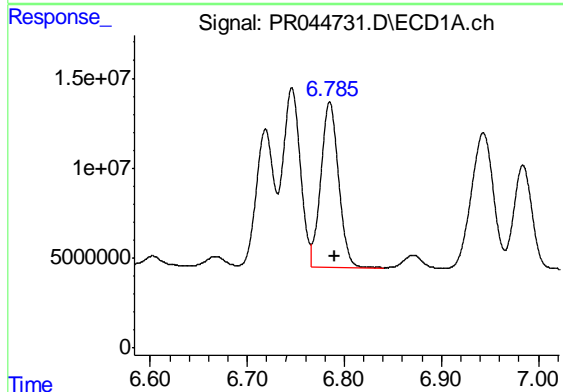
R.T.: 6.049 min
 Delta R.T.: -0.006 min
 Response: 43022230
 Conc: 285.78 ng/ml

Instrument :
 ECD_R
 ClientSampleId :
 AR1248394



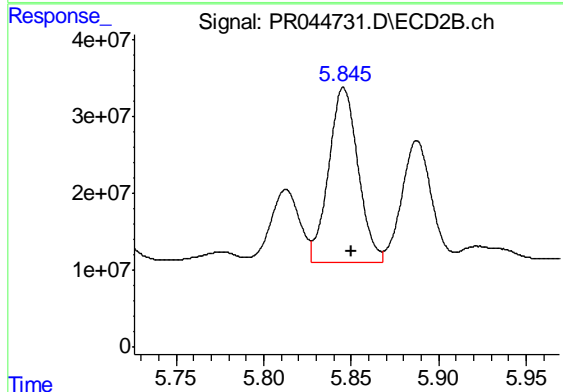
#19 AR-1242-4

R.T.: 5.322 min
 Delta R.T.: -0.004 min
 Response: 118435708
 Conc: 549.68 ng/ml



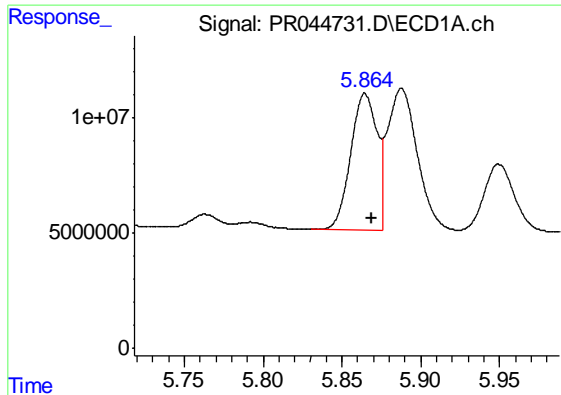
#20 AR-1242-5

R.T.: 6.785 min
 Delta R.T.: -0.005 min
 Response: 116836853
 Conc: 667.01 ng/ml



#20 AR-1242-5

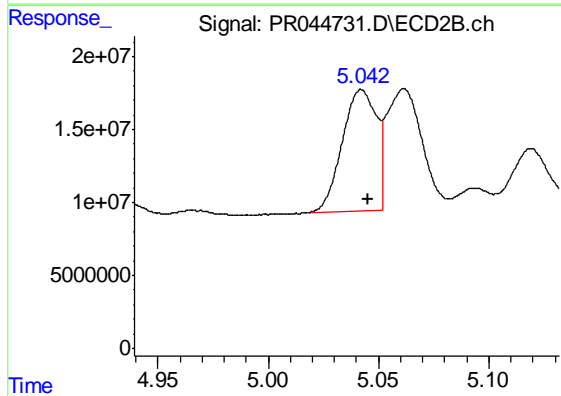
R.T.: 5.846 min
 Delta R.T.: -0.004 min
 Response: 267120478
 Conc: 729.80 ng/ml



#21 AR-1248-1

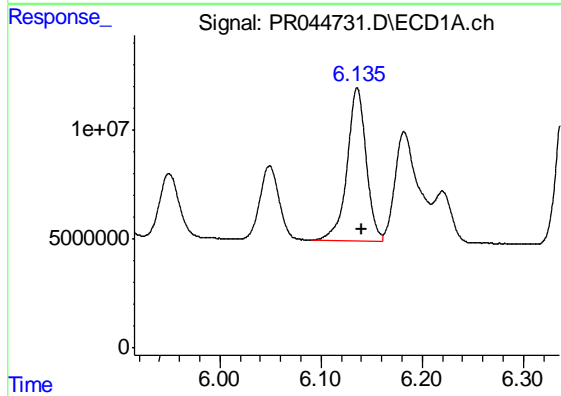
R.T.: 5.865 min
 Delta R.T.: -0.004 min
 Response: 68835653
 Conc: 414.43 ng/ml

Instrument :
 ECD_R
 ClientSampleId :
 AR1248394



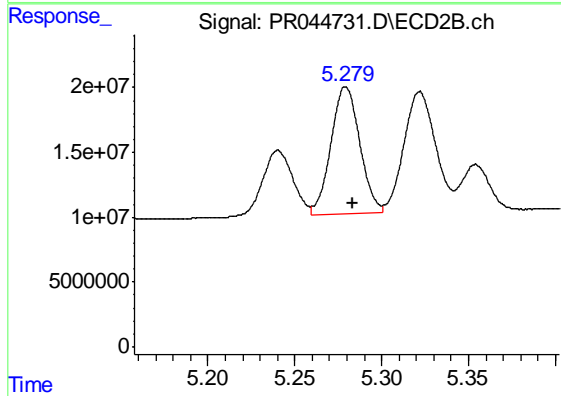
#21 AR-1248-1

R.T.: 5.042 min
 Delta R.T.: -0.003 min
 Response: 89022119
 Conc: 361.23 ng/ml



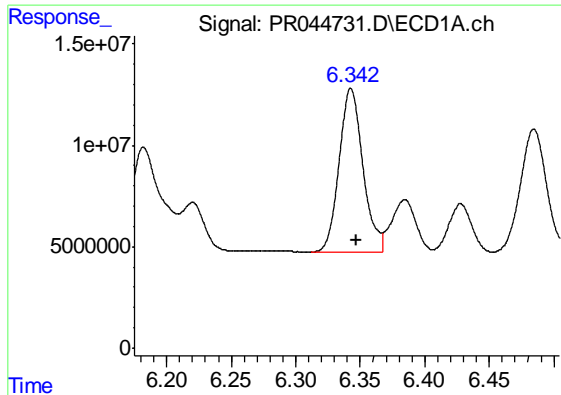
#22 AR-1248-2

R.T.: 6.136 min
 Delta R.T.: -0.005 min
 Response: 91665959
 Conc: 409.89 ng/ml



#22 AR-1248-2

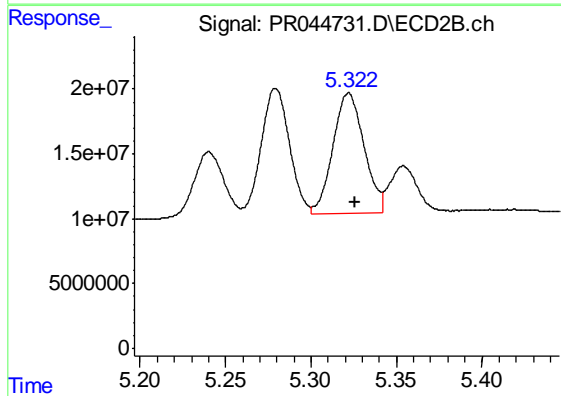
R.T.: 5.279 min
 Delta R.T.: -0.004 min
 Response: 114202875
 Conc: 381.41 ng/ml



#23 AR-1248-3

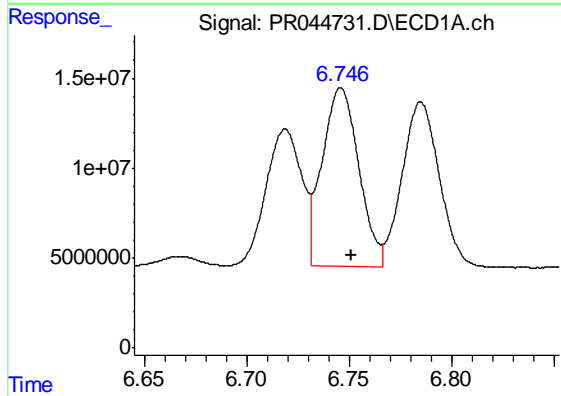
R.T.: 6.343 min
 Delta R.T.: -0.005 min
 Response: 103343311
 Conc: 412.09 ng/ml

Instrument :
 ECD_R
 ClientSampleId :
 AR1248394



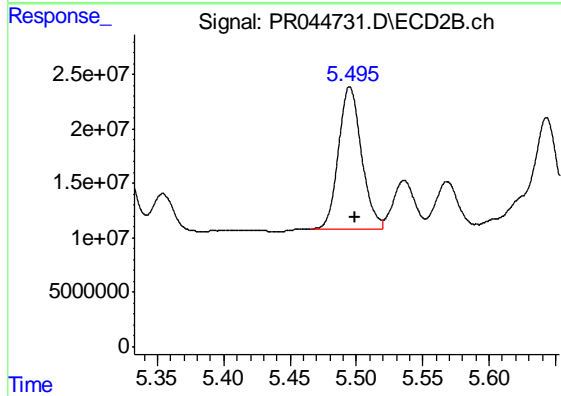
#23 AR-1248-3

R.T.: 5.322 min
 Delta R.T.: -0.004 min
 Response: 118435708
 Conc: 379.94 ng/ml



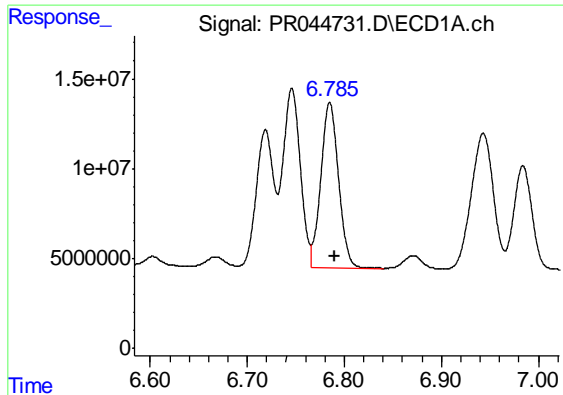
#24 AR-1248-4

R.T.: 6.746 min
 Delta R.T.: -0.005 min
 Response: 123991156
 Conc: 406.20 ng/ml



#24 AR-1248-4

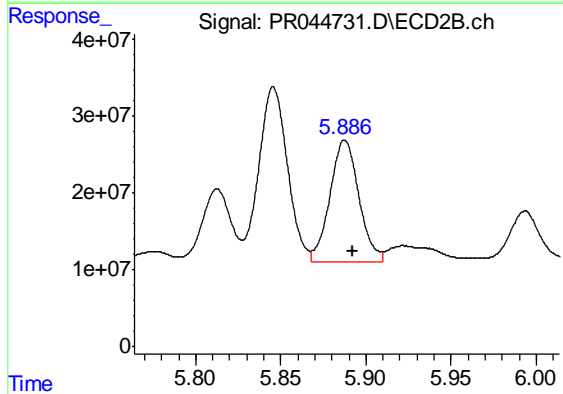
R.T.: 5.495 min
 Delta R.T.: -0.004 min
 Response: 157339213
 Conc: 381.09 ng/ml



#25 AR-1248-5

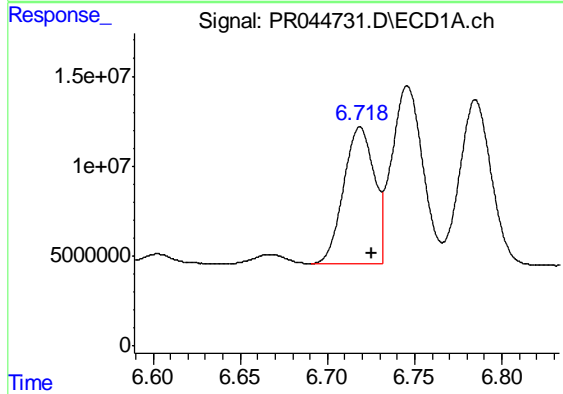
R.T.: 6.785 min
 Delta R.T.: -0.005 min
 Response: 116836853
 Conc: 405.11 ng/ml

Instrument :
 ECD_R
 ClientSampleId :
 AR1248394



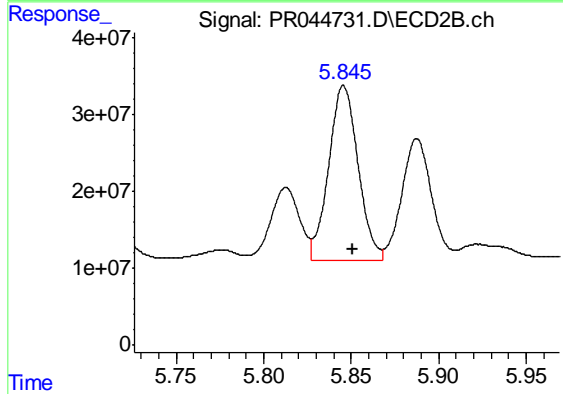
#25 AR-1248-5

R.T.: 5.888 min
 Delta R.T.: -0.005 min
 Response: 188050121
 Conc: 381.98 ng/ml



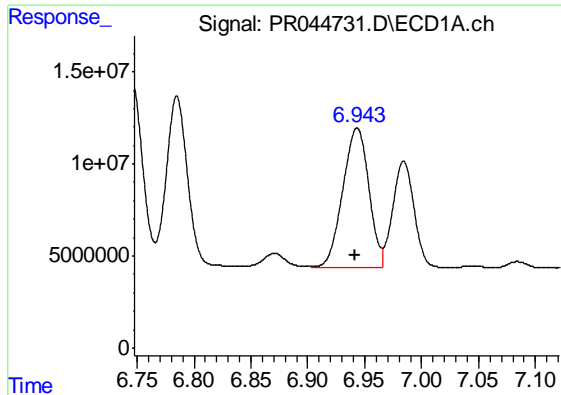
#26 AR-1254-1

R.T.: 6.719 min
 Delta R.T.: -0.006 min
 Response: 92499781
 Conc: 304.46 ng/ml



#26 AR-1254-1

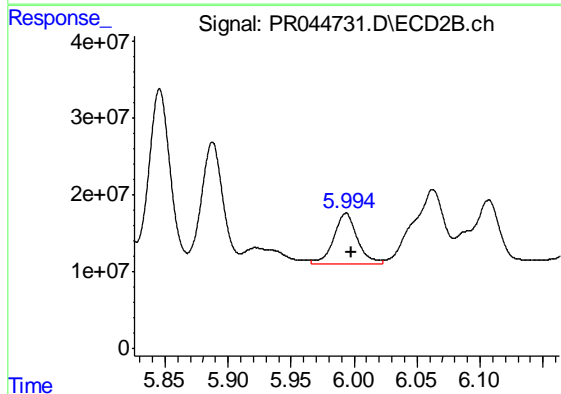
R.T.: 5.846 min
 Delta R.T.: -0.005 min
 Response: 267120478
 Conc: 361.78 ng/ml



#27 AR-1254-2

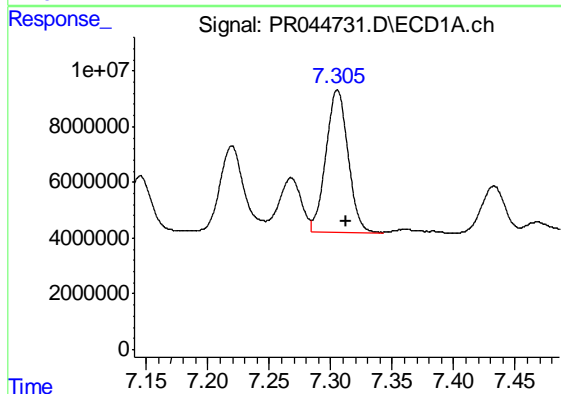
R.T.: 6.943 min
 Delta R.T.: 0.001 min
 Response: 120118564
 Conc: 257.14 ng/ml

Instrument :
 ECD_R
 ClientSampleId :
 AR1248394



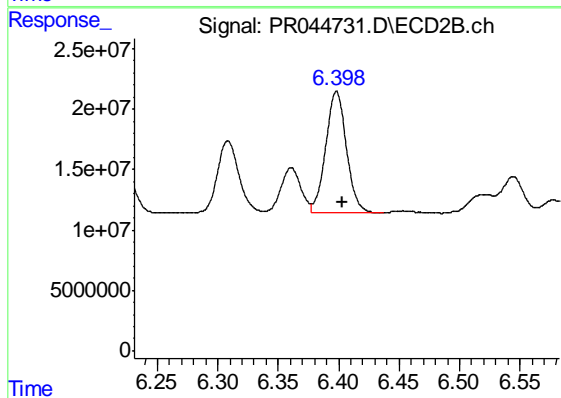
#27 AR-1254-2

R.T.: 5.994 min
 Delta R.T.: -0.004 min
 Response: 85685435
 Conc: 126.57 ng/ml



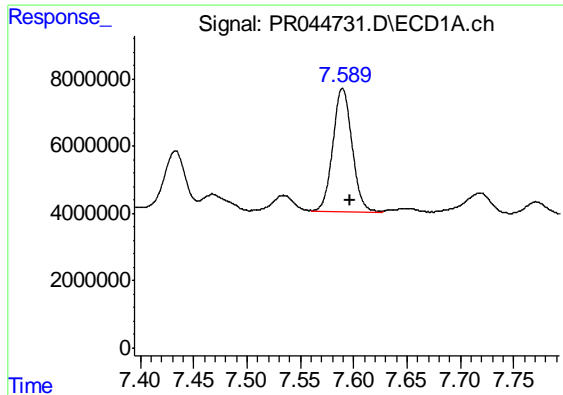
#28 AR-1254-3

R.T.: 7.305 min
 Delta R.T.: -0.007 min
 Response: 64673684
 Conc: 127.87 ng/ml



#28 AR-1254-3

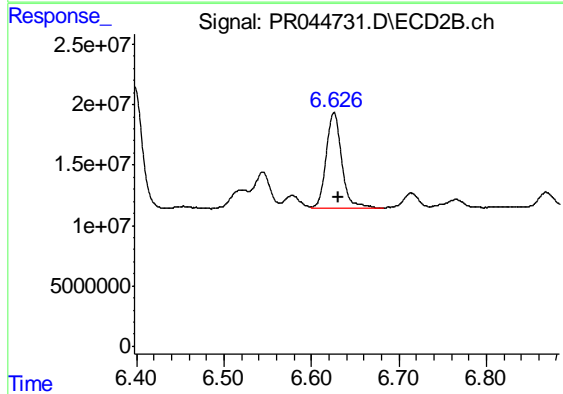
R.T.: 6.398 min
 Delta R.T.: -0.005 min
 Response: 120311991
 Conc: 107.09 ng/ml



#29 AR-1254-4

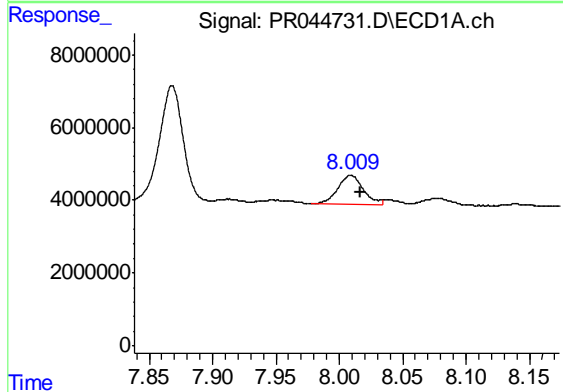
R.T.: 7.590 min
 Delta R.T.: -0.008 min
 Response: 46206608
 Conc: 117.04 ng/ml

Instrument :
 ECD_R
 ClientSampleId :
 AR1248394



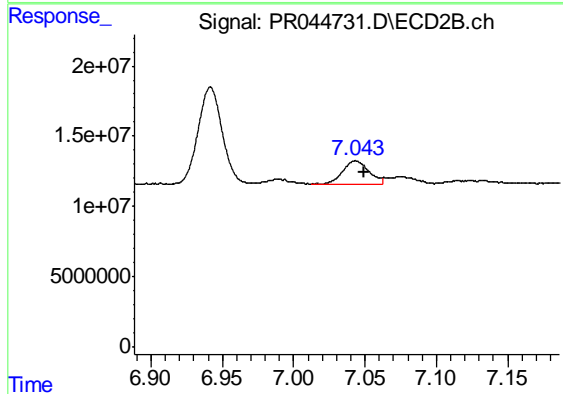
#29 AR-1254-4

R.T.: 6.626 min
 Delta R.T.: -0.005 min
 Response: 98717471
 Conc: 116.31 ng/ml



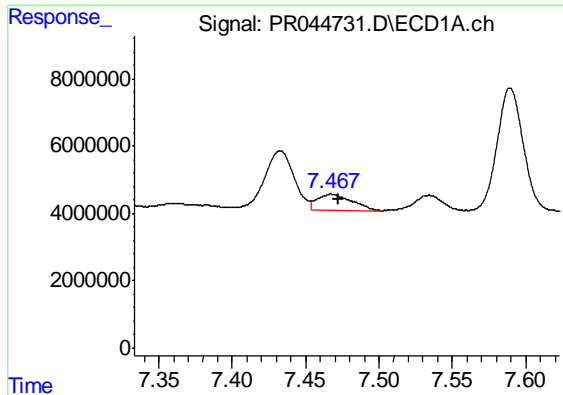
#30 AR-1254-5

R.T.: 8.009 min
 Delta R.T.: -0.008 min
 Response: 11249610
 Conc: 26.09 ng/ml



#30 AR-1254-5

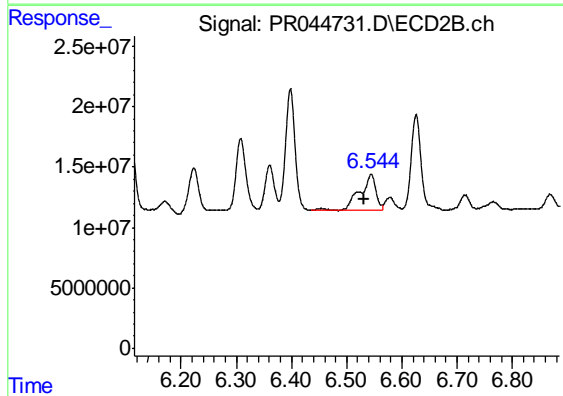
R.T.: 7.043 min
 Delta R.T.: -0.006 min
 Response: 21057081
 Conc: 19.69 ng/ml



#31 AR-1260-1

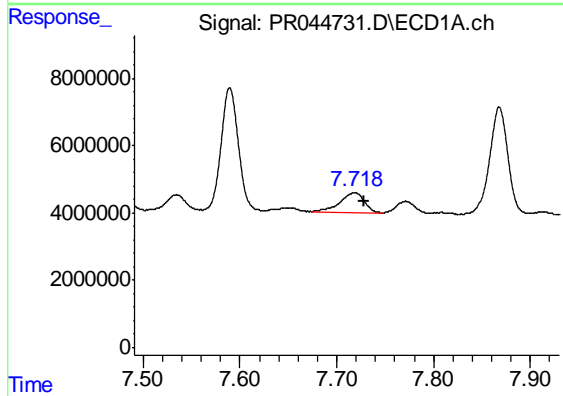
R.T.: 7.468 min
 Delta R.T.: -0.005 min
 Response: 7687897
 Conc: 21.14 ng/ml

Instrument :
 ECD_R
 ClientSampled :
 AR1248394



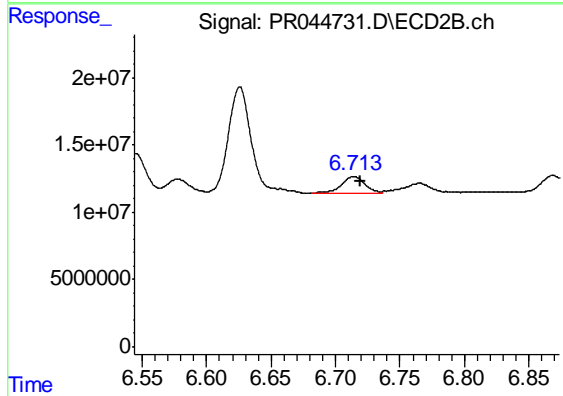
#31 AR-1260-1

R.T.: 6.544 min
 Delta R.T.: 0.012 min
 Response: 60935903
 Conc: 81.78 ng/ml



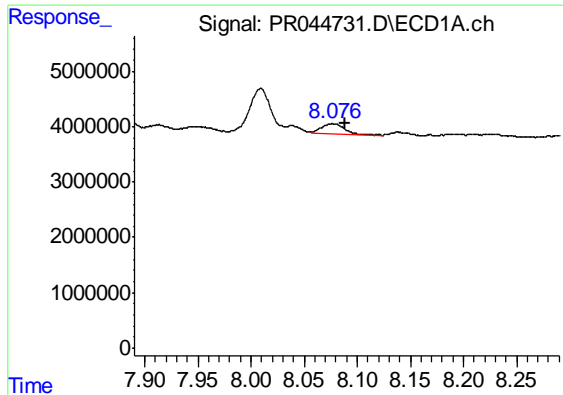
#32 AR-1260-2

R.T.: 7.718 min
 Delta R.T.: -0.010 min
 Response: 10942196
 Conc: 24.13 ng/ml



#32 AR-1260-2

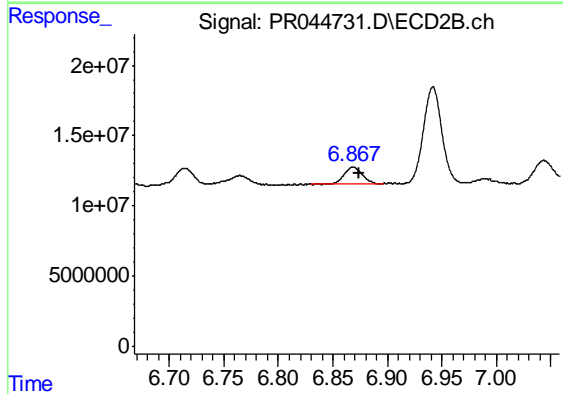
R.T.: 6.714 min
 Delta R.T.: -0.005 min
 Response: 15932186
 Conc: 14.09 ng/ml



#33 AR-1260-3

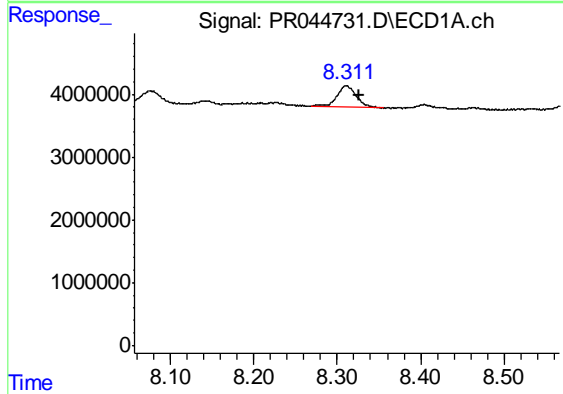
R.T.: 8.077 min
 Delta R.T.: -0.011 min
 Response: 2916477
 Conc: 8.24 ng/ml

Instrument :
 ECD_R
 ClientSampleId :
 AR1248394



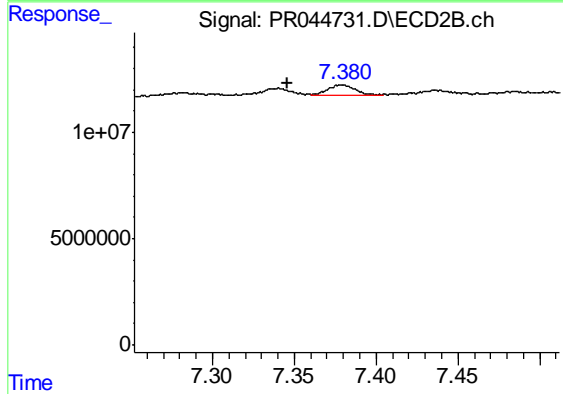
#33 AR-1260-3

R.T.: 6.869 min
 Delta R.T.: -0.006 min
 Response: 14217129
 Conc: 15.59 ng/ml



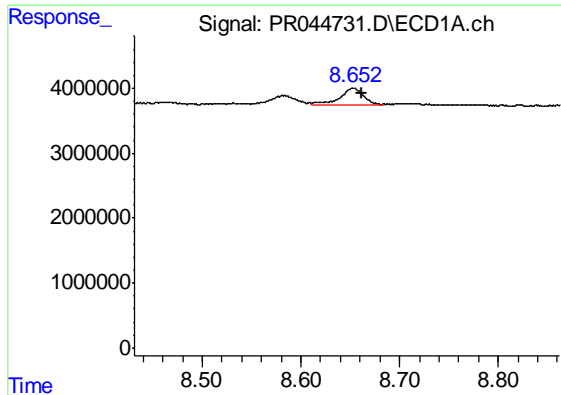
#34 AR-1260-4

R.T.: 8.311 min
 Delta R.T.: -0.015 min
 Response: 5546074
 Conc: 13.66 ng/ml



#34 AR-1260-4

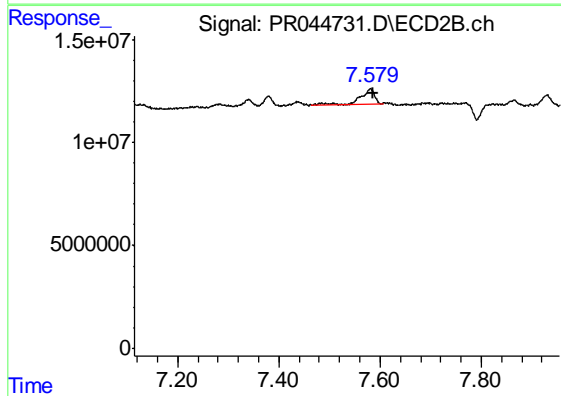
R.T.: 7.379 min
 Delta R.T.: 0.033 min
 Response: 5292142
 Conc: 6.44 ng/ml



#35 AR-1260-5

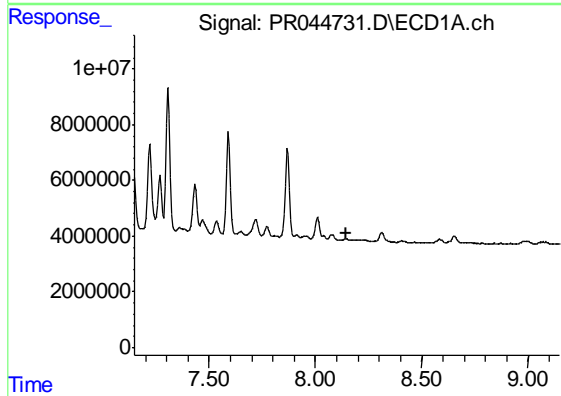
R.T.: 8.653 min
 Delta R.T.: -0.009 min
 Response: 4080094
 Conc: 4.64 ng/ml

Instrument :
 ECD_R
 ClientSampleId :
 AR1248394



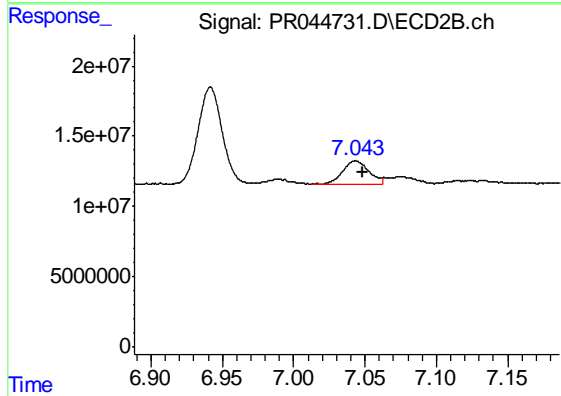
#35 AR-1260-5

R.T.: 7.581 min
 Delta R.T.: -0.006 min
 Response: 15748131
 Conc: 6.38 ng/ml



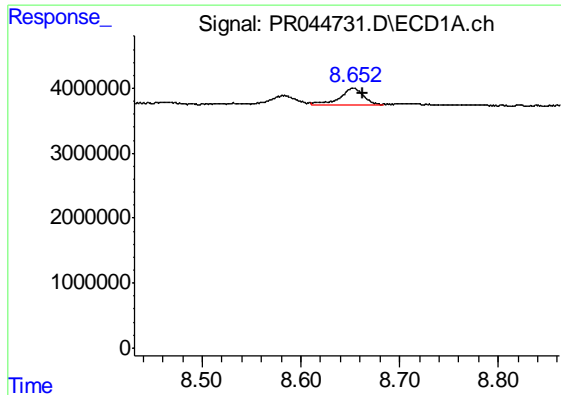
#36 AR-1262-1

R.T.: 0.000 min
 Exp R.T. : 8.148 min
 Response: 0
 Conc: N.D.



#36 AR-1262-1

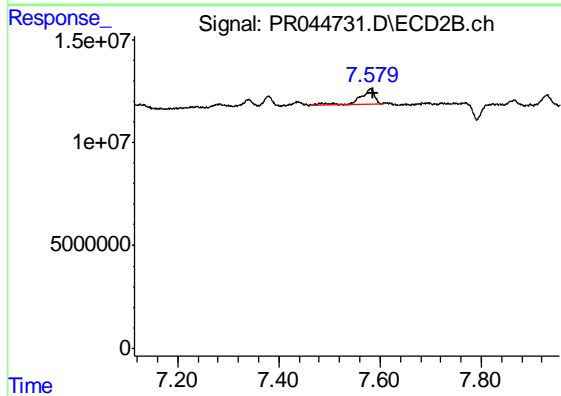
R.T.: 7.043 min
 Delta R.T.: -0.005 min
 Response: 21057081
 Conc: 35.40 ng/ml



#37 AR-1262-2

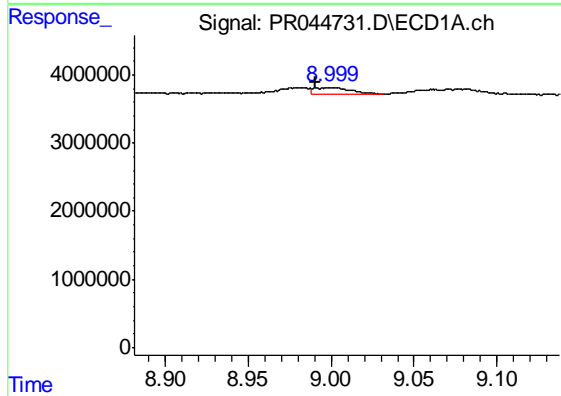
R.T.: 8.653 min
 Delta R.T.: -0.009 min
 Response: 4080094
 Conc: 4.04 ng/ml

Instrument :
 ECD_R
 ClientSampleId :
 AR1248394



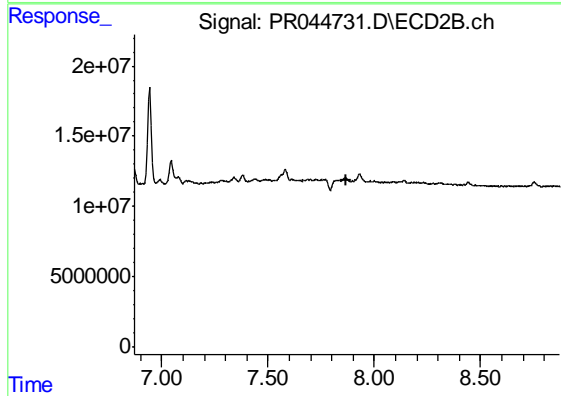
#37 AR-1262-2

R.T.: 7.581 min
 Delta R.T.: -0.007 min
 Response: 15748131
 Conc: 5.79 ng/ml



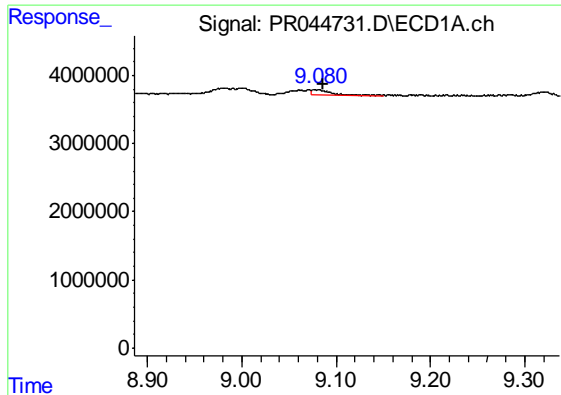
#38 AR-1262-3

R.T.: 8.999 min
 Delta R.T.: 0.008 min
 Response: 1373415
 Conc: 2.04 ng/ml



#38 AR-1262-3

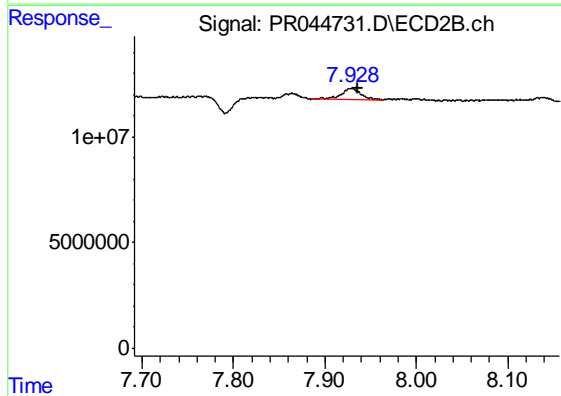
R.T.: 7.864 min
 Delta R.T.: -0.007 min
 Response: -1477357
 Conc: N.D.



#39 AR-1262-4

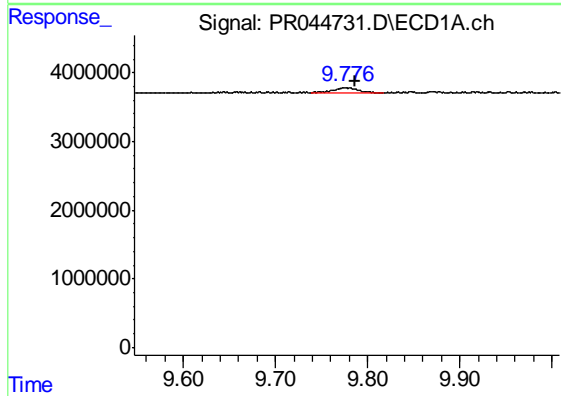
R.T.: 9.081 min
 Delta R.T.: -0.007 min
 Response: 1096196
 Conc: 2.13 ng/ml

Instrument :
 ECD_R
 ClientSampleId :
 AR1248394



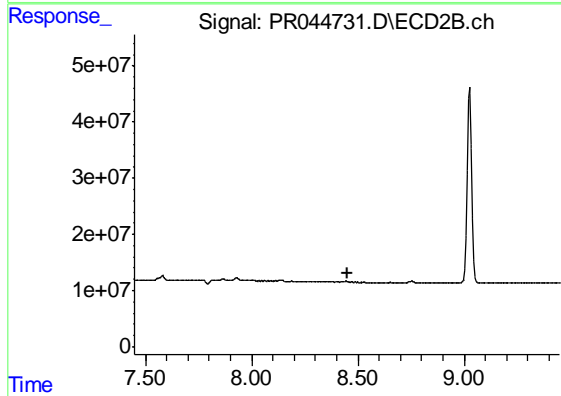
#39 AR-1262-4

R.T.: 7.929 min
 Delta R.T.: -0.007 min
 Response: 8231871
 Conc: 4.56 ng/ml



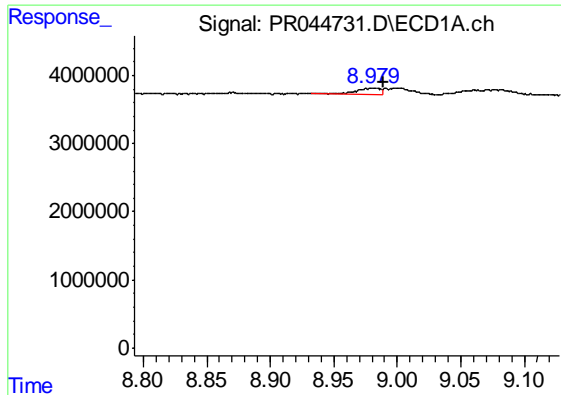
#40 AR-1262-5

R.T.: 9.775 min
 Delta R.T.: -0.012 min
 Response: 1312462
 Conc: 3.51 ng/ml



#40 AR-1262-5

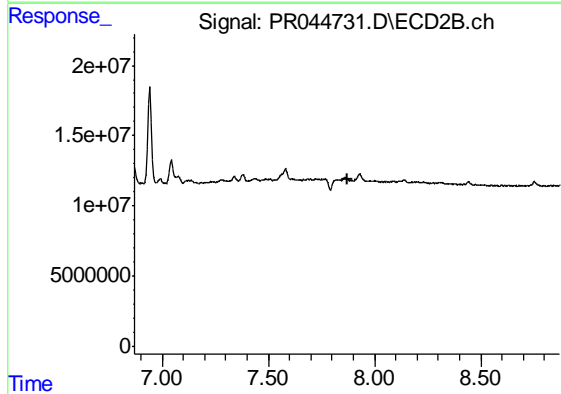
R.T.: 0.000 min
 Exp R.T. : 8.448 min
 Response: 0
 Conc: N.D.



#41 AR-1268-1

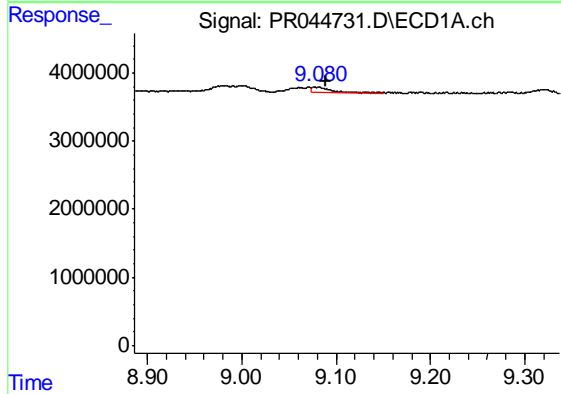
R.T.: 8.981 min
 Delta R.T.: -0.008 min
 Response: 1147422
 Conc: 1.01 ng/ml

Instrument :
 ECD_R
 ClientSampleId :
 AR1248394



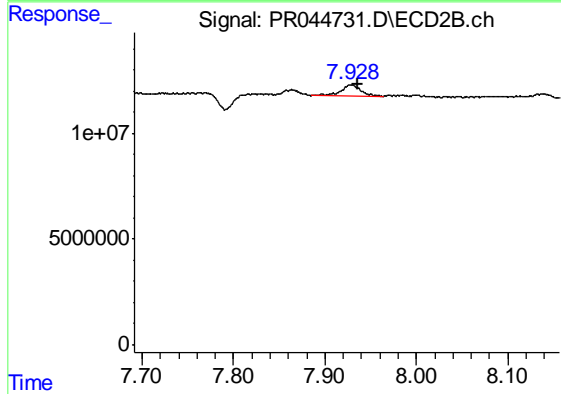
#41 AR-1268-1

R.T.: 7.864 min
 Delta R.T.: -0.006 min
 Response: -1477357
 Conc: N.D.



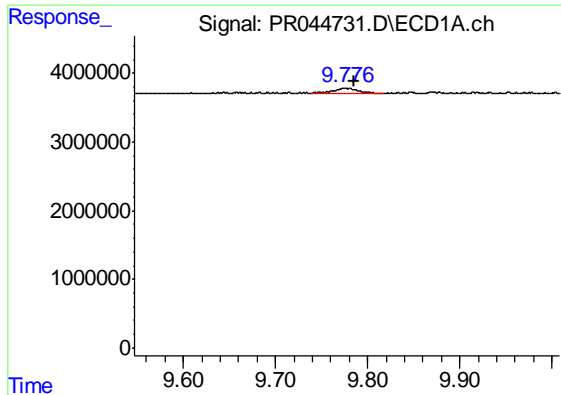
#42 AR-1268-2

R.T.: 9.081 min
 Delta R.T.: -0.008 min
 Response: 1096196
 Conc: 1.02 ng/ml



#42 AR-1268-2

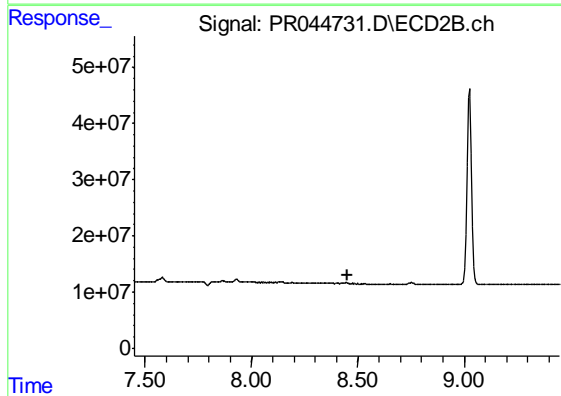
R.T.: 7.929 min
 Delta R.T.: -0.007 min
 Response: 8231871
 Conc: 3.27 ng/ml



#44 AR-1268-4

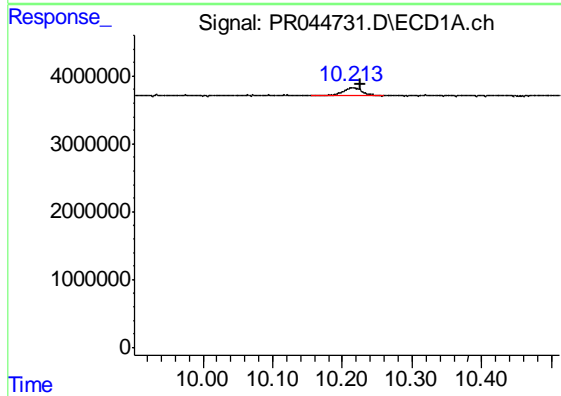
R.T.: 9.775 min
 Delta R.T.: -0.010 min
 Response: 1312462
 Conc: 3.28 ng/ml

Instrument :
 ECD_R
 ClientSampleId :
 AR1248394



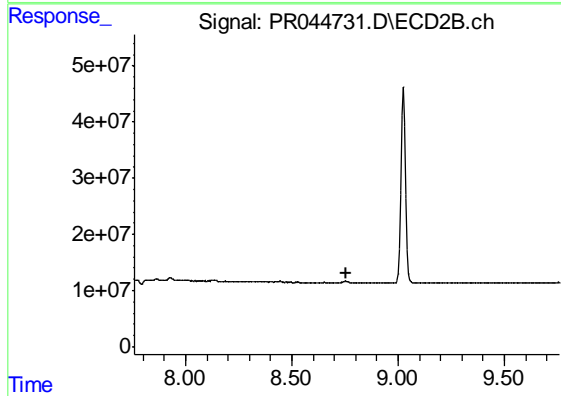
#44 AR-1268-4

R.T.: 0.000 min
 Exp R.T. : 8.449 min
 Response: 0
 Conc: N.D.



#45 AR-1268-5

R.T.: 10.214 min
 Delta R.T.: -0.012 min
 Response: 2389195
 Conc: 0.75 ng/ml



#45 AR-1268-5

R.T.: 0.000 min
 Exp R.T. : 8.759 min
 Response: 0
 Conc: N.D.