

Data Path : Z:\pestpcbsrv\HPCHEM1\ECD\_R\Data\PR021624\  
 Data File : PR065658.D  
 Signal(s) : Signal #1: ECD1A.ch Signal #2: ECD2B.ch  
 Acq On : 17 Feb 2024 03:26  
 Operator : AJ\MA  
 Sample : AR1262ICC800  
 Misc :  
 ALS Vial : 36 Sample Multiplier: 1

Instrument :  
 ECD\_R  
 ClientSampleId :  
 AR12624221

Integration File signal 1: autoint1.e  
 Integration File signal 2: autoint2.e  
 Quant Time: Feb 17 04:41:18 2024  
 Quant Method : Z:\pestpcbsrv\HPCHEM1\ECD\_R\Method\PR021624CLP.M  
 Quant Title : GC EXTRACTABLES  
 QLast Update : Sat Feb 17 04:39:56 2024  
 Response via : Initial Calibration  
 Integrator: ChemStation

Volume Inj. : 1 µl  
 Signal #1 Phase : ZB MR1 Signal #2 Phase: ZB MR2  
 Signal #1 Info : 30Mx0.32mmx 0.5µm Signal #2 Info : 30M x 0.32mm x 0.25µm

Compound	RT#1	RT#2	Resp#1	Resp#2	ng/ml	ng/ml
-----						
System Monitoring Compounds						
1) SA Tetrachlo...	3.667	2.928	229.9E6	263.6E6	38.801	38.028
2) SA Decachlor...	9.547	8.188	115.4E6	195.2E6	78.017	76.384
Target Compounds						
36) L8 AR-1262-1	7.267	6.198	166.7E6	308.5E6	765.551	750.470
37) L8 AR-1262-2	7.845	6.737	232.8E6	490.7E6	784.066	754.604
38) L8 AR-1262-3	8.149	7.043	159.0E6	200.1E6	780.832	758.559
39) L8 AR-1262-4	8.236	7.110	126.6E6	349.4E6	774.023	753.980
40) L8 AR-1262-5	8.854	7.647	69036766	151.9E6	787.153	778.313
-----						

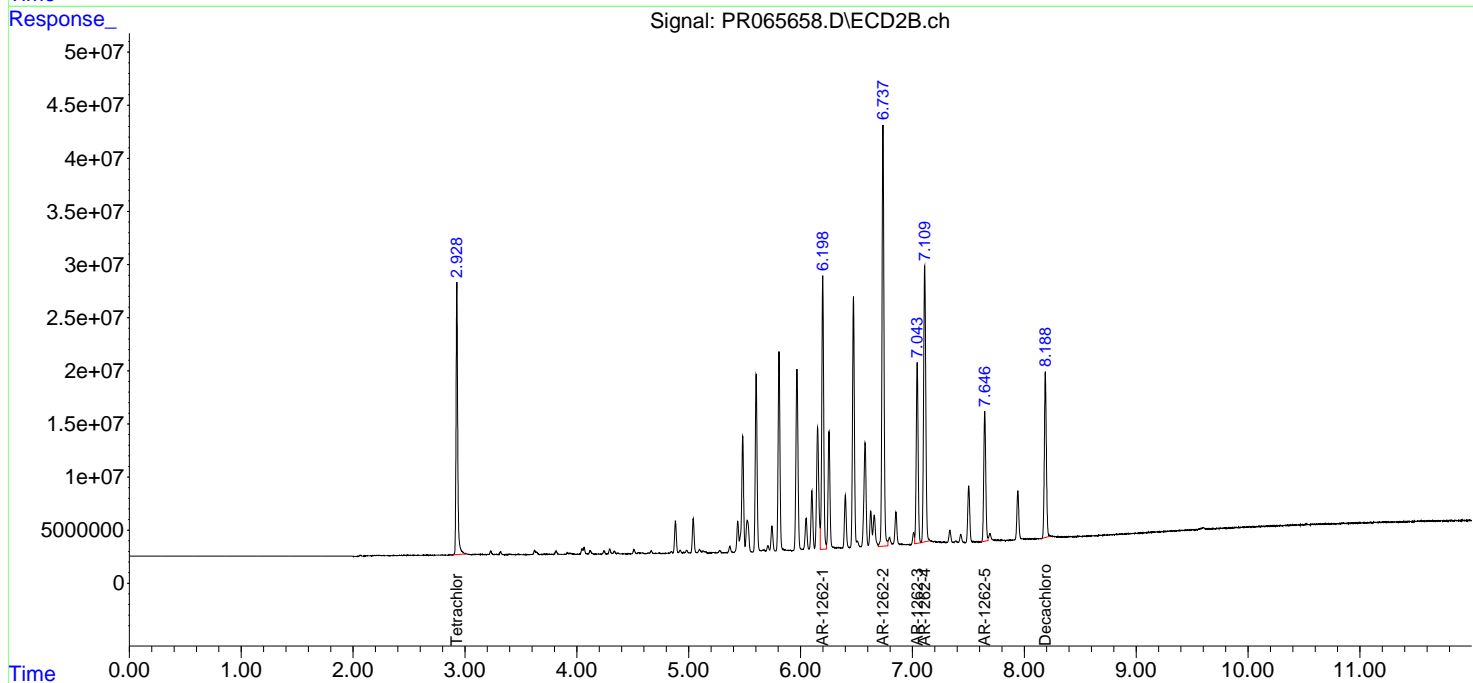
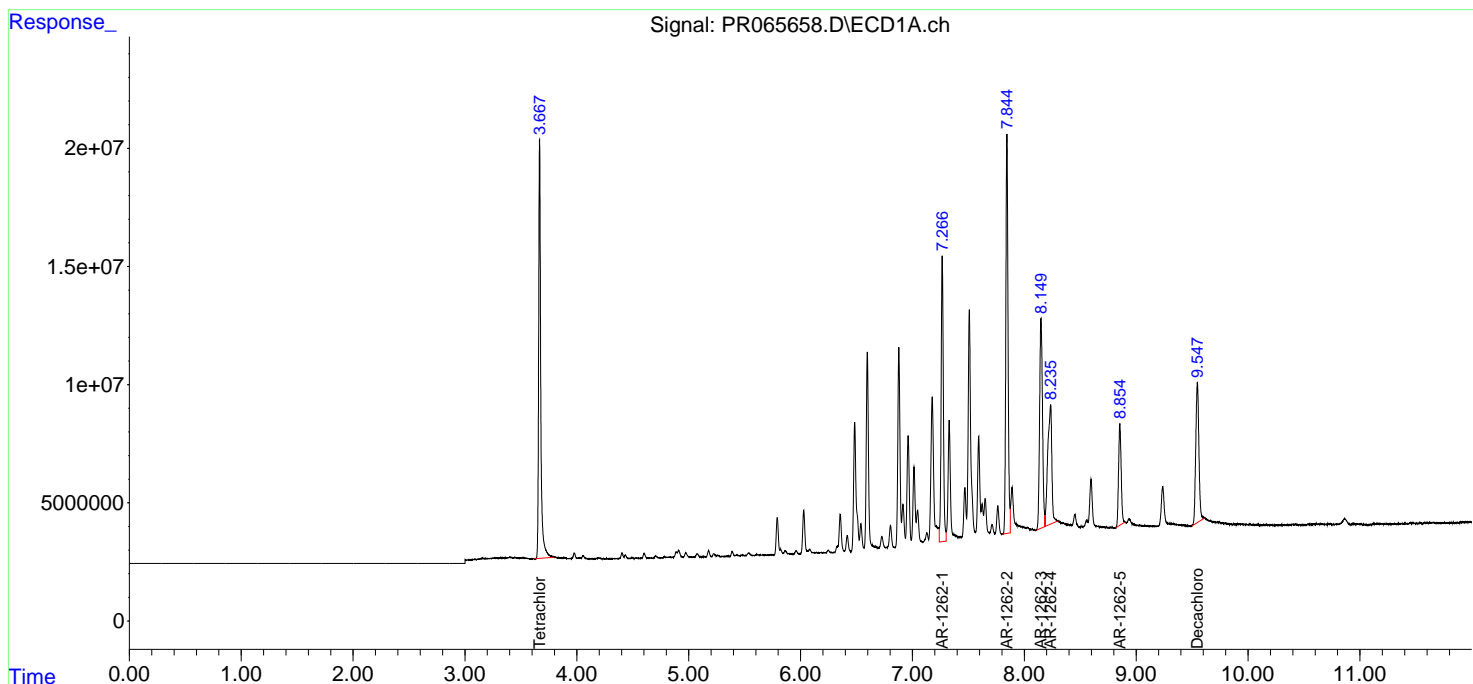
(f)=RT Delta > 1/2 Window (#)=Amounts differ by > 25% (m)=manual int.

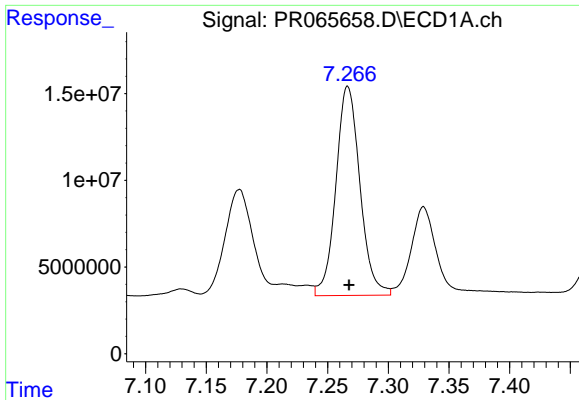
Data Path : Z:\pestpcbsrv\HPCHEM1\ECD\_R\Data\PR021624\  
 Data File : PR065658.D  
 Signal(s) : Signal #1: ECD1A.ch Signal #2: ECD2B.ch  
 Acq On : 17 Feb 2024 03:26  
 Operator : AJ\MA  
 Sample : AR1262ICC800  
 Misc :  
 ALS Vial : 36 Sample Multiplier: 1

Instrument :  
 ECD\_R  
 ClientSampleId :  
 AR12624221

Integration File signal 1: autoint1.e  
 Integration File signal 2: autoint2.e  
 Quant Time: Feb 17 04:41:18 2024  
 Quant Method : Z:\pestpcbsrv\HPCHEM1\ECD\_R\Method\PR021624CLP.M  
 Quant Title : GC EXTRACTABLES  
 QLast Update : Sat Feb 17 04:39:56 2024  
 Response via : Initial Calibration  
 Integrator: ChemStation

Volume Inj. : 1 µl  
 Signal #1 Phase : ZB MR1 Signal #2 Phase: ZB MR2  
 Signal #1 Info : 30Mx0.32mmx 0.5µm Signal #2 Info : 30M x 0.32mm x 0.25µm

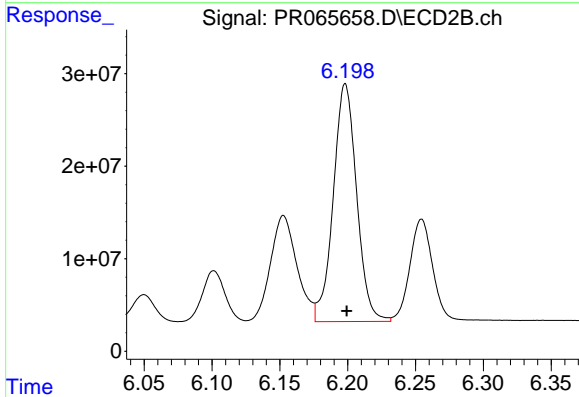




#36 AR-1262-1

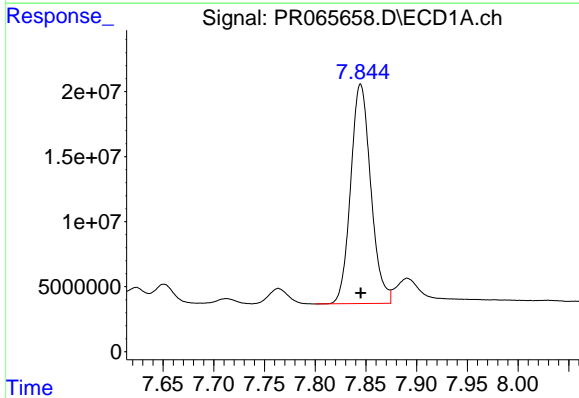
R.T.: 7.267 min  
 Delta R.T.: -0.001 min  
 Response: 166707885  
 Conc: 765.55 ng/ml

Instrument :  
 ECD\_R  
 ClientSampleId :  
 AR12624221



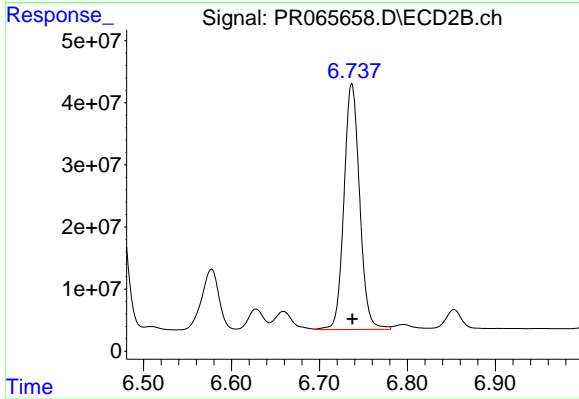
#36 AR-1262-1

R.T.: 6.198 min  
 Delta R.T.: -0.001 min  
 Response: 308509287  
 Conc: 750.47 ng/ml



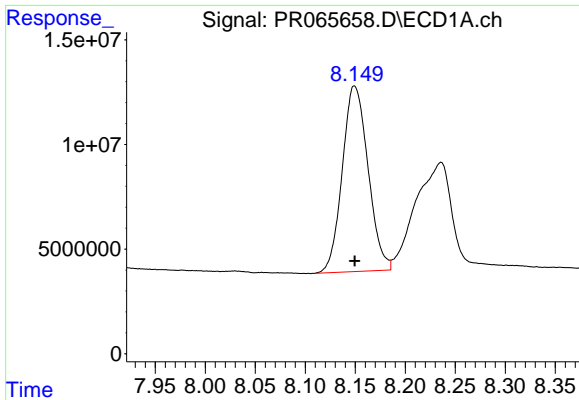
#37 AR-1262-2

R.T.: 7.845 min  
 Delta R.T.: 0.000 min  
 Response: 232829573  
 Conc: 784.07 ng/ml



#37 AR-1262-2

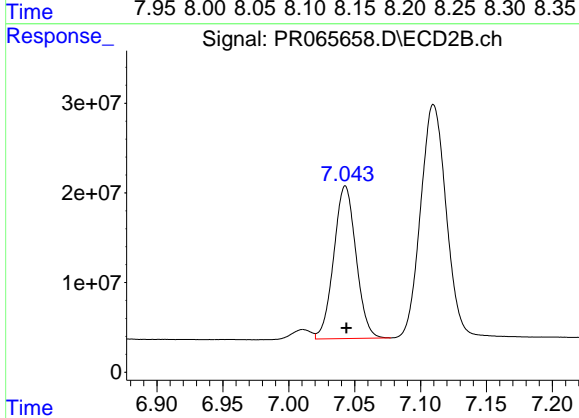
R.T.: 6.737 min  
 Delta R.T.: 0.000 min  
 Response: 490689021  
 Conc: 754.60 ng/ml



#38 AR-1262-3

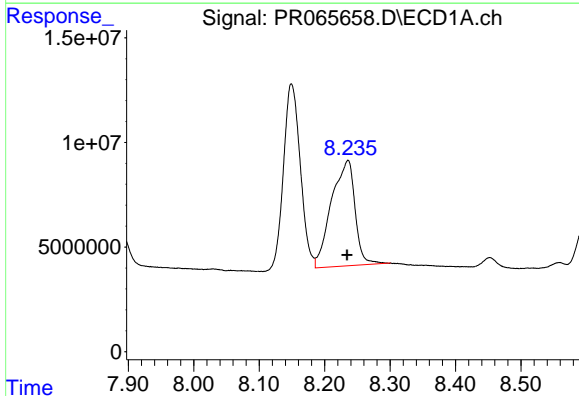
R.T.: 8.149 min  
Delta R.T.: 0.000 min  
Response: 159038947  
Conc: 780.83 ng/ml

Instrument :  
ECD\_R  
ClientSampleId :  
AR12624221



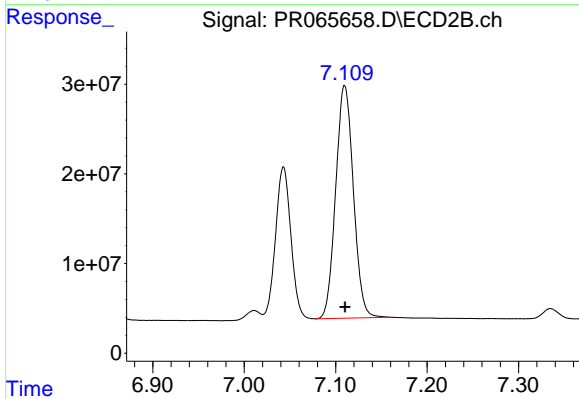
#38 AR-1262-3

R.T.: 7.043 min  
Delta R.T.: 0.000 min  
Response: 200064584  
Conc: 758.56 ng/ml



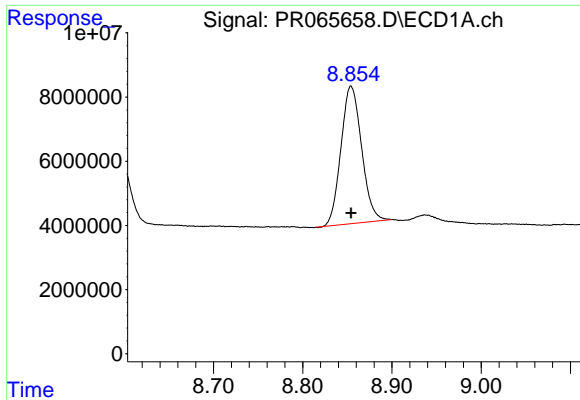
#39 AR-1262-4

R.T.: 8.236 min  
Delta R.T.: 0.002 min  
Response: 126632133  
Conc: 774.02 ng/ml



#39 AR-1262-4

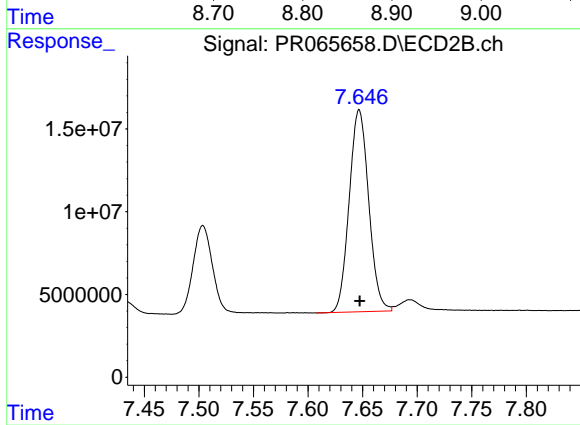
R.T.: 7.110 min  
Delta R.T.: 0.000 min  
Response: 349380376  
Conc: 753.98 ng/ml



#40 AR-1262-5

R.T.: 8.854 min  
Delta R.T.: 0.000 min  
Response: 69036766  
Conc: 787.15 ng/ml

Instrument :  
ECD\_R  
ClientSampleId :  
AR12624221



#40 AR-1262-5

R.T.: 7.647 min  
Delta R.T.: 0.000 min  
Response: 151858249  
Conc: 778.31 ng/ml