

Data Path : Z:\pestpcbsrv\HPCHEM1\ECD\_R\Data\PR021624\  
 Data File : PR065651.D  
 Signal(s) : Signal #1: ECD1A.ch Signal #2: ECD2B.ch  
 Acq On : 17 Feb 2024 01:43  
 Operator : AJ\MA  
 Sample : AR1254I CC200  
 Misc :  
 ALS Vial : 29 Sample Multiplier: 1

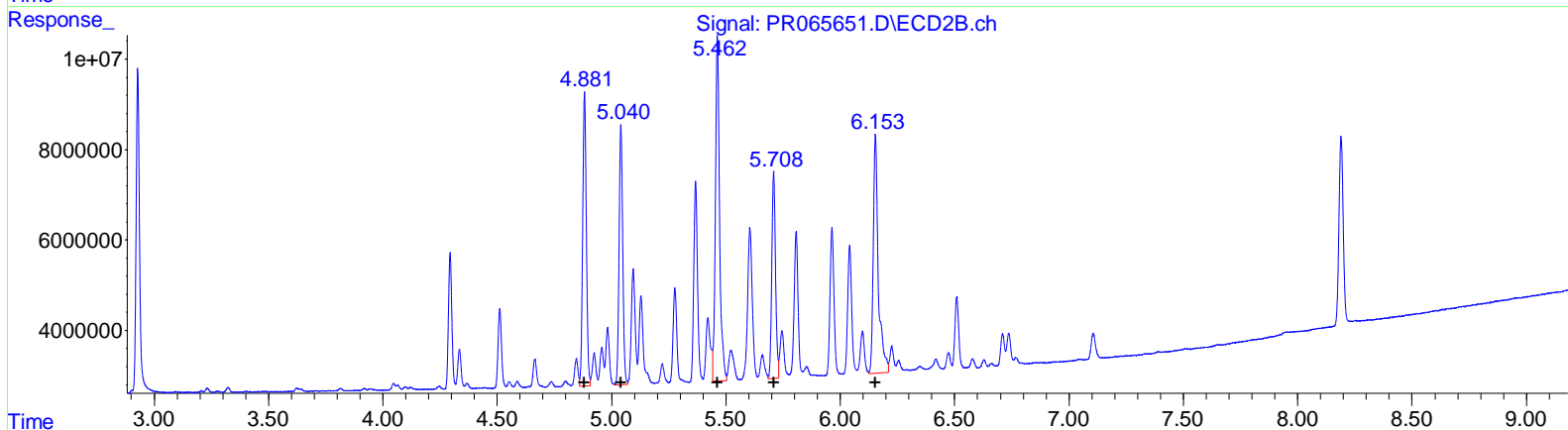
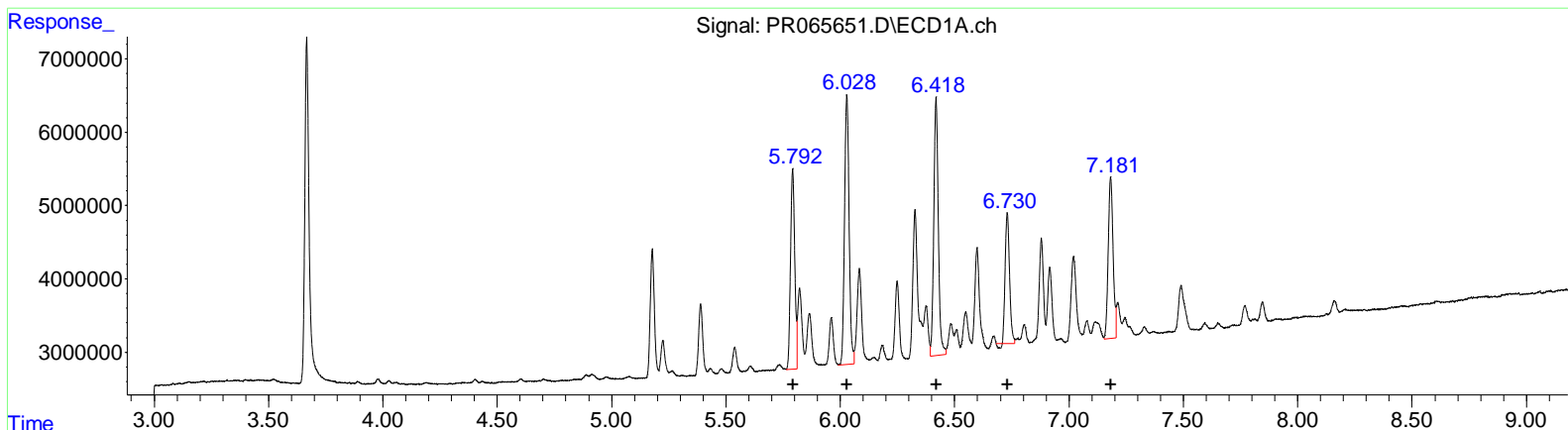
**Instrument :**  
 ECD\_R  
**LabSampleId :**  
 AR1254ICC200

**Manual Integrations APPROVED**

Reviewed By :Yogesh Patel 02/19/2024  
 Supervised By :Ankita Jodhani 02/19/2024

Integration File signal 1: autoint1.e  
 Integration File signal 2: autoint2.e  
 Quant Time: Feb 17 04:15:14 2024  
 Quant Method : Z:\pestpcbsrv\HPCHEM1\ECD\_R\Method\PR021624CLP.M  
 Quant Title : GC EXTRACTABLES  
 QLast Update : Sat Feb 17 04:15:07 2024  
 Response via : Initial Calibration  
 Integrator: ChemStation

Volume Inj. : 1 µl  
 Signal #1 Phase : ZB MR1 Signal #2 Phase: ZB MR2  
 Signal #1 Info : 30Mx0.32mmx 0.5µm Signal #2 Info : 30M x 0.32mm x 0.25µm



(26) AR-1254-1 (L6)

R.T.	Response	Conc
5.79	34988890	203.96
6.03	50912848	199.32
6.42	48182479	202.05
6.73	23522144	180.04
7.18	32425272	203.47

(26) AR-1254-1 #2 (L6)

R.T.	Response	Conc
4.88	72308863	200.10
5.04	63338453	200.14
5.46	96562066	200.20
5.71	51647223	199.88
6.15	80697792	200.77

(+) = Expected Retention Time

Data Path : Z:\pestpcbsrv\HPCHEM1\ECD\_R\Data\PR021624\  
 Data File : PR065651.D  
 Signal(s) : Signal #1: ECD1A.ch Signal #2: ECD2B.ch  
 Acq On : 17 Feb 2024 01:43  
 Operator : AJ\MA  
 Sample : AR1254I CC200  
 Misc :  
 ALS Vial : 29 Sample Multiplier: 1

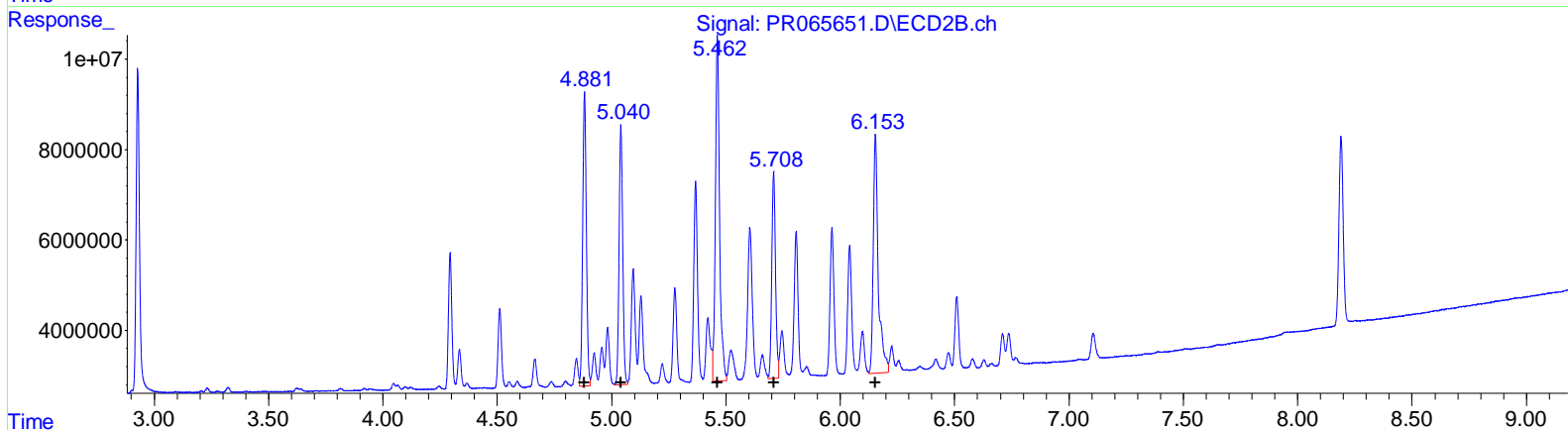
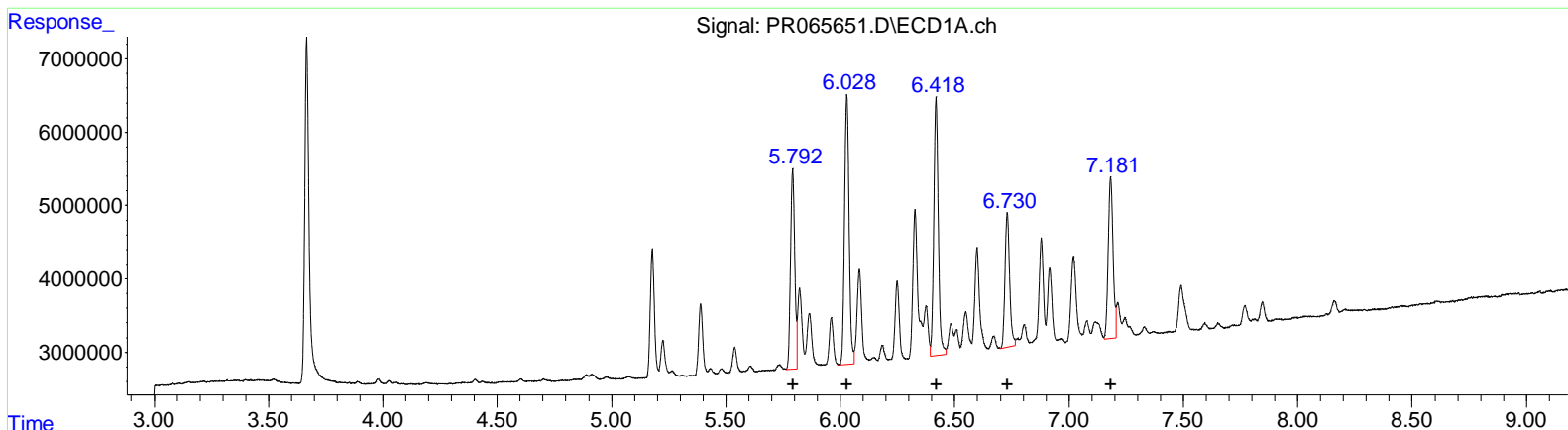
**Instrument :**  
 ECD\_R  
**LabSampleID :**  
 AR1254ICC200

**Manual Integrations APPROVED**

Reviewed By :Yogesh Patel 02/19/2024  
 Supervised By :Ankita Jodhani 02/19/2024

Integration File signal 1: autoint1.e  
 Integration File signal 2: autoint2.e  
 Quant Time: Feb 17 04:15:14 2024  
 Quant Method : Z:\pestpcbsrv\HPCHEM1\ECD\_R\Method\PR021624CLP.M  
 Quant Title : GC EXTRACTABLES  
 QLast Update : Sat Feb 17 04:15:07 2024  
 Response via : Initial Calibration  
 Integrator: ChemStation

Volume Inj. : 1 µl  
 Signal #1 Phase : ZB MR1 Signal #2 Phase: ZB MR2  
 Signal #1 Info : 30Mx0.32mmx 0.5µm Signal #2 Info : 30M x 0.32mm x 0.25µm



(26) AR-1254-1 (L6)

R.T.	Response	Conc
5.79	34988890	203.96
6.03	50912848	199.32
6.42	48182479	202.05
6.73	25913807	198.34
7.18	32425272	203.47

(26) AR-1254-1 #2 (L6)

R.T.	Response	Conc
4.88	72308863	200.10
5.04	63338453	200.14
5.46	96562066	200.20
5.71	51647223	199.88
6.15	80697792	200.77

(+) = Expected Retention Time