

Data Path : Z:\pestpcbsrv\HPCHEM1\ECD\_R\Data\PR030122\  
 Data File : PR053658.D  
 Signal(s) : Signal #1: ECD1A.ch Signal #2: ECD2B.ch  
 Acq On : 28 Feb 2022 19:57  
 Operator : AJ\MA  
 Sample : N1692-08  
 Misc :  
 ALS Vial : 18 Sample Multiplier: 1

Instrument :  
 ECD\_R  
 ClientSampleId :

Integration File signal 1: autoint1.e  
 Integration File signal 2: autoint2.e  
 Quant Time: Mar 01 08:15:22 2022  
 Quant Method : Z:\pestpcbsrv\HPCHEM1\ECD\_R\Method\PR021522CLP.M  
 Quant Title : GC EXTRACTABLES  
 QLast Update : Wed Feb 16 05:21:54 2022  
 Response via : Initial Calibration  
 Integrator: ChemStation

Volume Inj. : 1 µl  
 Signal #1 Phase : ZB MR1 Signal #2 Phase: ZB MR2  
 Signal #1 Info : 30Mx0.32mmx 0.5µm Signal #2 Info : 30M x 0.32mm x 0.25µm

Compound	RT#1	RT#2	Resp#1	Resp#2	ng/ml	ng/ml
-----						
System Monitoring Compounds						
1) SA Tetrachlo...	3.567	2.814	35699128	22348095	18.224	18.585
2) SA Decachlor...	9.380	7.960	42335520	32989798	25.987	24.588
Target Compounds						
3) L1 AR-1016-1	4.819	3.913	1546814	723187	24.068	16.096 #
4) L1 AR-1016-2	4.819	3.913	1546814	723187	16.982	10.918 #
5) L1 AR-1016-3	4.886	0.000	496546	0	8.799	N.D. #
6) L1 AR-1016-4	4.970	4.208f	975455	1937604	21.091	61.454 #
7) L1 AR-1016-5	5.325f	4.388f	1005328	794093	21.245	21.047
8) L2 AR-1221-1	3.794	3.085f	5220999	-396855	218.373	N.D. #
9) L2 AR-1221-2	3.881	3.085	905810	-396855	53.703	N.D. #
10) L2 AR-1221-3	3.959	0.000	169997	0	3.102	N.D. #
11) L3 AR-1232-1	3.959	0.000	169997	0	3.712	N.D. #
12) L3 AR-1232-2	4.503	3.913	771812	723187	34.128	25.044 #
13) L3 AR-1232-3	4.819	0.000	1546814	0	38.280	N.D. #
14) L3 AR-1232-4	4.970	4.208	975455	1937604	47.535	138.280 #
15) L3 AR-1232-5	5.070	4.388f	1250495	794093	79.916	50.041 #
16) L4 AR-1242-1	4.819	3.913	1546814	723187	28.960	19.869 #
17) L4 AR-1242-2	4.819	3.913	1546814	723187	20.688	13.529 #
18) L4 AR-1242-3	4.886	0.000	496546	0	10.563	N.D. #
19) L4 AR-1242-4	4.970	4.208	975455	1937604	25.254	67.302 #
20) L4 AR-1242-5	5.756	4.709	3277198	6825469	77.098	189.353 #
21) L5 AR-1248-1	4.819	3.913	1546814	723187	38.665	26.662 #
22) L5 AR-1248-2	5.070	4.208f	1250495	1937604	22.545	45.050 #
23) L5 AR-1248-3	5.325f	4.208	1005328	1937604	15.453	46.239 #
24) L5 AR-1248-4	5.684f	4.388f	8385182	794093	113.861	15.638 #
25) L5 AR-1248-5	5.756	4.751	3277198	2193134	45.400	44.471
26) L6 AR-1254-1	5.684	4.709	8385182	6825469	117.371	90.986
27) L6 AR-1254-2	5.918	4.867	11971855	8549476	106.278	130.058
28) L6 AR-1254-3	6.312	5.278	13169976	12798028	112.174	124.125
29) L6 AR-1254-4	6.621	5.521	9884350	7816438	108.906	118.741
30) L6 AR-1254-5	7.073	5.958	11070978	9855177	114.199	104.722
31) L7 AR-1260-1	6.485	5.418	4954491	6925024	58.681	97.439 #
32) L7 AR-1260-2	6.765	5.620	6728696	5194061	68.512	63.700
33) L7 AR-1260-3	7.150	5.769	2446456	5461881	32.695	69.532 #
34) L7 AR-1260-4	7.389	6.270	6423747	1292856	72.337	19.218 #
35) L7 AR-1260-5	7.733	6.536	3361837	2892172	19.651	18.968
36) L8 AR-1262-1	7.150	5.958	2446456	9855177	21.400	190.314 #
37) L8 AR-1262-2	7.733	6.536	3361837	2892172	16.355	16.204
38) L8 AR-1262-3	8.052	6.835	2866618	785460	30.315	10.819 #
39) L8 AR-1262-4	8.099	6.899	1553917	2282939	27.888	16.937 #
40) L8 AR-1262-5	8.720	0.000	728178	0	9.444	N.D. #
41) L9 AR-1268-1	8.052	6.835	2866618	785460	11.748	3.737 #

Data Path : Z:\pestpcbsrv\HPCHEM1\ECD\_R\Data\PR030122\  
 Data File : PR053658.D  
 Signal(s) : Signal #1: ECD1A.ch Signal #2: ECD2B.ch  
 Acq On : 28 Feb 2022 19:57  
 Operator : AJ\MA  
 Sample : N1692-08  
 Misc :  
 ALS Vial : 18 Sample Multiplier: 1

Instrument :  
 ECD\_R  
 ClientSampleId :

Integration File signal 1: autoint1.e  
 Integration File signal 2: autoint2.e  
 Quant Time: Mar 01 08:15:22 2022  
 Quant Method : Z:\pestpcbsrv\HPCHEM1\ECD\_R\Method\PR021522CLP.M  
 Quant Title : GC EXTRACTABLES  
 QLast Update : Wed Feb 16 05:21:54 2022  
 Response via : Initial Calibration  
 Integrator: ChemStation

Volume Inj. : 1 µl  
 Signal #1 Phase : ZB MR1 Signal #2 Phase: ZB MR2  
 Signal #1 Info : 30Mx0.32mmx 0.5µm Signal #2 Info : 30M x 0.32mm x 0.25µm

	Compound	RT#1	RT#2	Resp#1	Resp#2	ng/ml	ng/ml
42)	L9 AR-1268-2	8.099	6.899	1553917	2282939	6.932	11.983 #
43)	L9 AR-1268-3	8.379f	0.000	1310020	0	6.930	N.D. #
44)	L9 AR-1268-4	8.720	0.000	728178	0	8.756	N.D. #
45)	L9 AR-1268-5	9.089	7.724	358573	937287	0.578	1.822 #

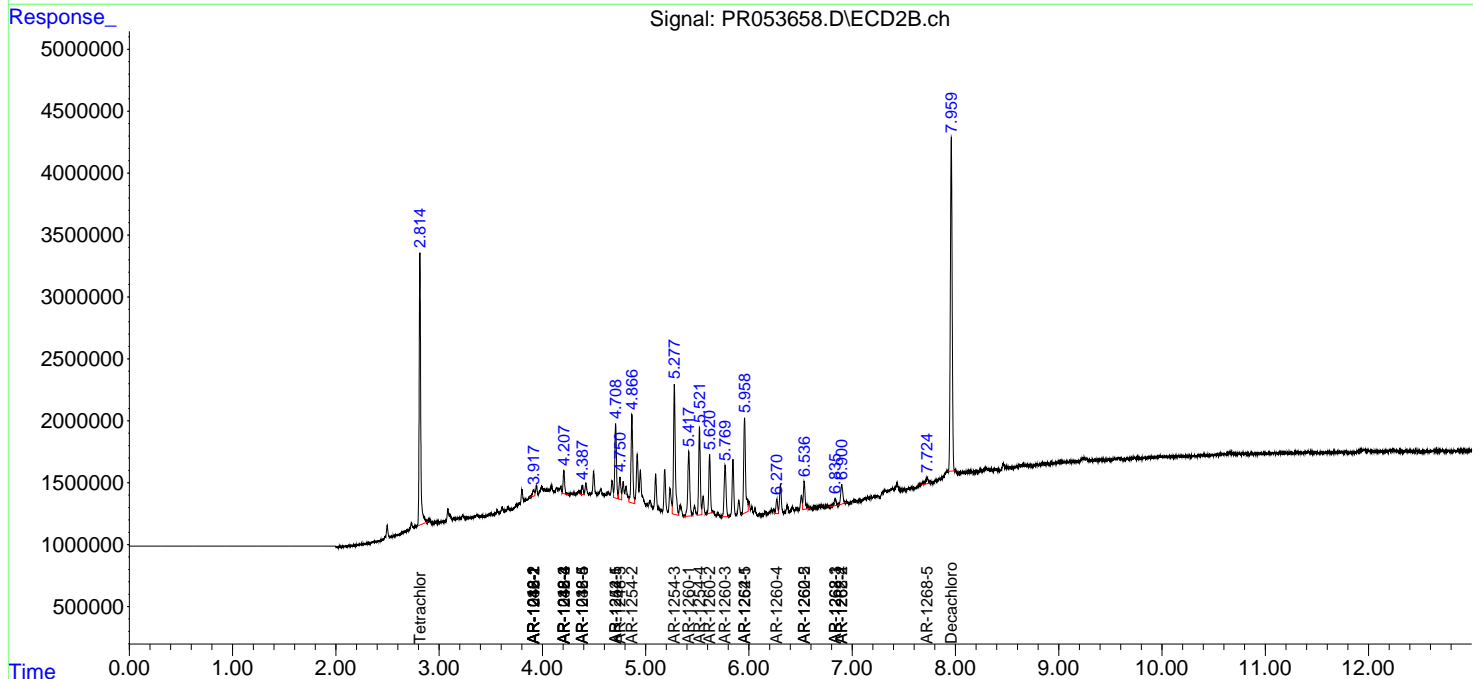
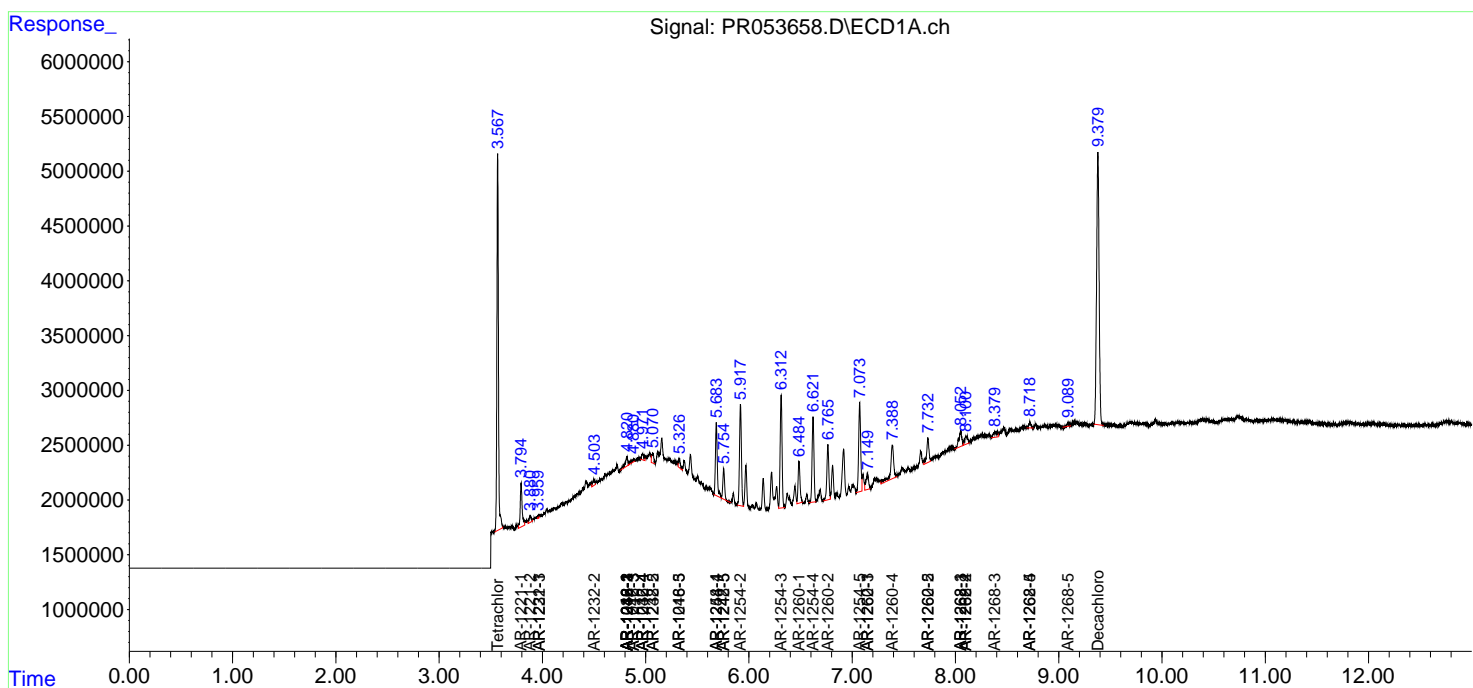
(f)=RT Delta > 1/2 Window (#)=Amounts differ by > 25% (m)=manual int.

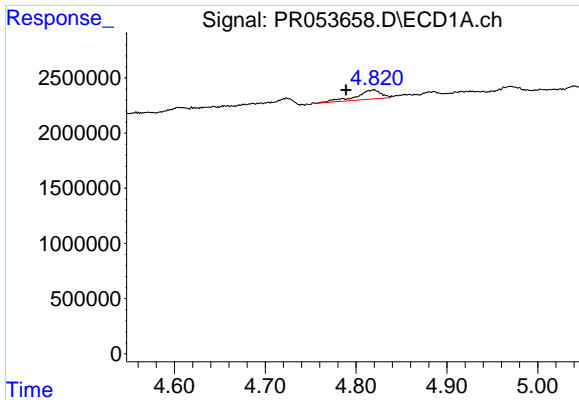
Data Path : Z:\pestpcbsrv\HPCHEM1\ECD\_R\Data\PR030122\  
 Data File : PR053658.D  
 Signal(s) : Signal #1: ECD1A.ch Signal #2: ECD2B.ch  
 Acq On : 28 Feb 2022 19:57  
 Operator : AJ\MA  
 Sample : N1692-08  
 Misc :  
 ALS Vial : 18 Sample Multiplier: 1

Instrument :  
 ECD\_R  
 ClientSampleId :

Integration File signal 1: autoint1.e  
 Integration File signal 2: autoint2.e  
 Quant Time: Mar 01 08:15:22 2022  
 Quant Method : Z:\pestpcbsrv\HPCHEM1\ECD\_R\Method\PR021522CLP.M  
 Quant Title : GC EXTRACTABLES  
 QLast Update : Wed Feb 16 05:21:54 2022  
 Response via : Initial Calibration  
 Integrator: ChemStation

Volume Inj. : 1 µl  
 Signal #1 Phase : ZB MR1 Signal #2 Phase: ZB MR2  
 Signal #1 Info : 30Mx0.32mmx 0.5µm Signal #2 Info : 30M x 0.32mm x 0.25µm

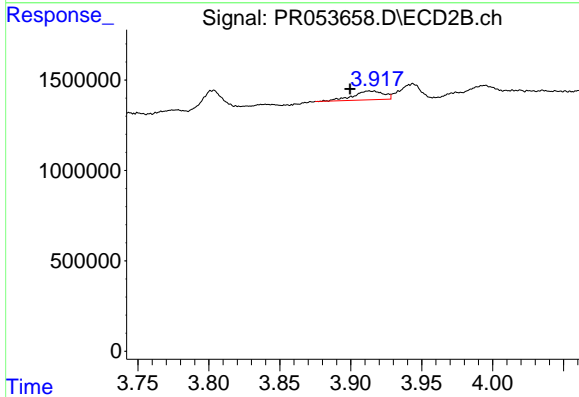




#3 AR-1016-1

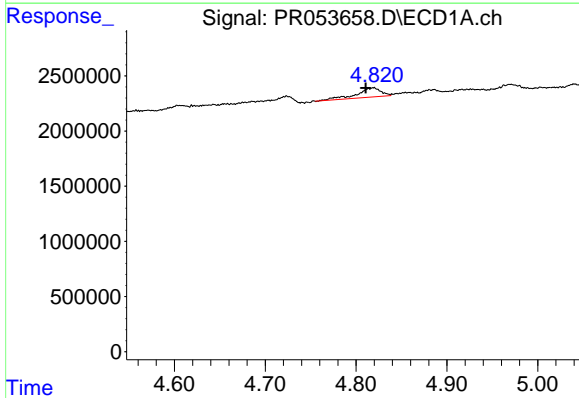
R.T.: 4.819 min  
 Delta R.T.: 0.030 min  
 Response: 1546814  
 Conc: 24.07 ng/ml

Instrument :  
 ECD\_R  
 ClientSampleId :



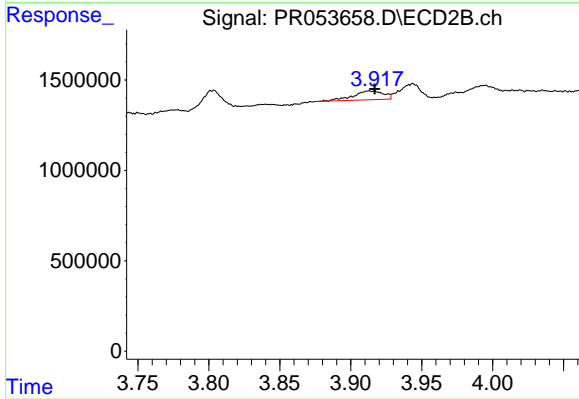
#3 AR-1016-1

R.T.: 3.913 min  
 Delta R.T.: 0.014 min  
 Response: 723187  
 Conc: 16.10 ng/ml



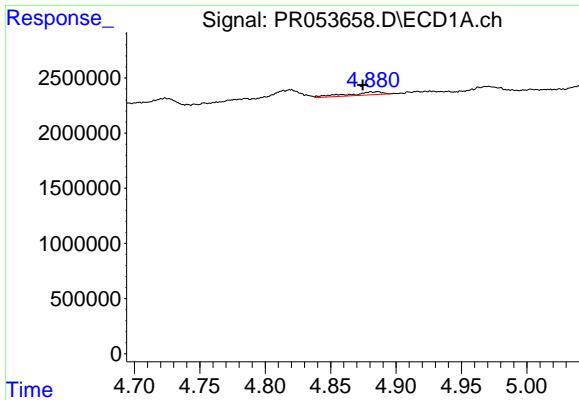
#4 AR-1016-2

R.T.: 4.819 min  
 Delta R.T.: 0.009 min  
 Response: 1546814  
 Conc: 16.98 ng/ml



#4 AR-1016-2

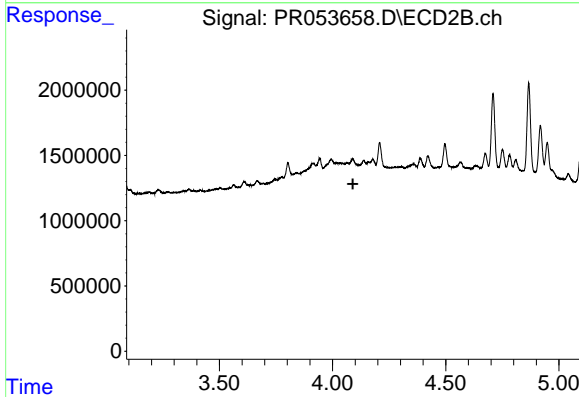
R.T.: 3.913 min  
 Delta R.T.: -0.004 min  
 Response: 723187  
 Conc: 10.92 ng/ml



#5 AR-1016-3

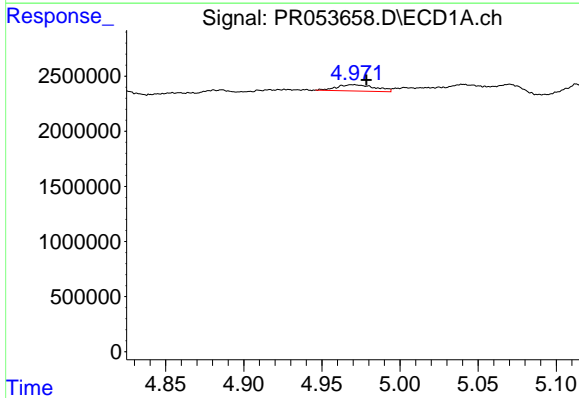
R.T.: 4.886 min  
 Delta R.T.: 0.011 min  
 Response: 496546  
 Conc: 8.80 ng/ml

Instrument :  
 ECD\_R  
 ClientSampleId :



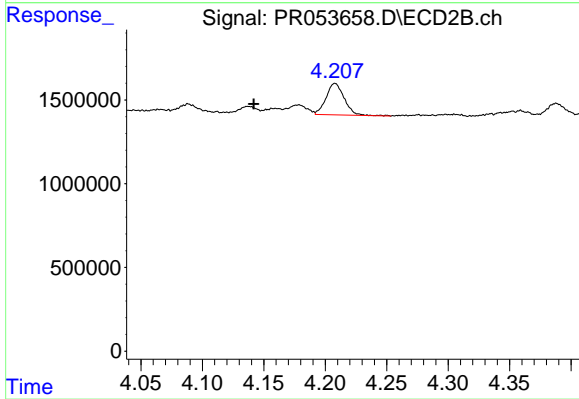
#5 AR-1016-3

R.T.: 0.000 min  
 Exp R.T. : 4.090 min  
 Response: 0  
 Conc: N.D.



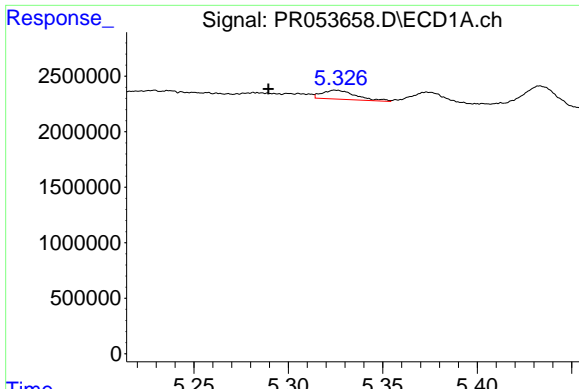
#6 AR-1016-4

R.T.: 4.970 min  
 Delta R.T.: -0.008 min  
 Response: 975455  
 Conc: 21.09 ng/ml



#6 AR-1016-4

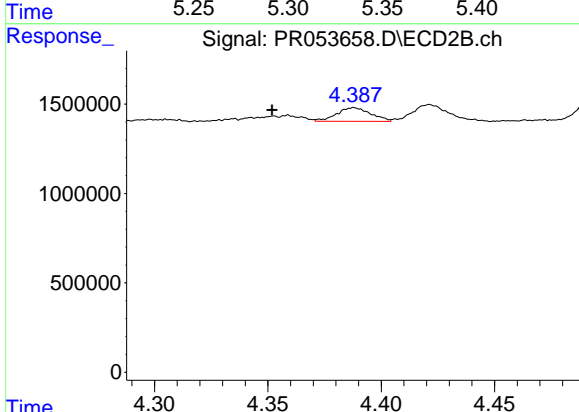
R.T.: 4.208 min  
 Delta R.T.: 0.066 min  
 Response: 1937604  
 Conc: 61.45 ng/ml



#7 AR-1016-5

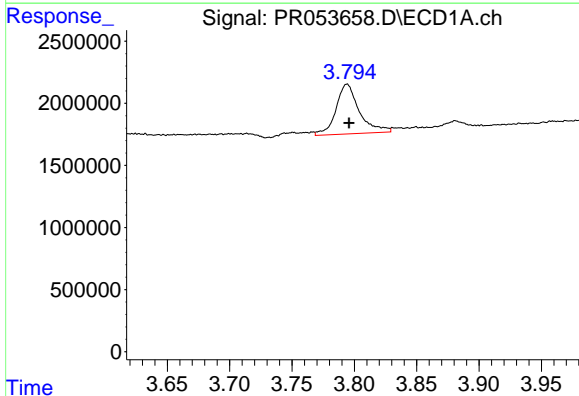
R.T.: 5.325 min  
 Delta R.T.: 0.036 min  
 Response: 1005328  
 Conc: 21.24 ng/ml

Instrument :  
 ECD\_R  
 ClientSampleId :



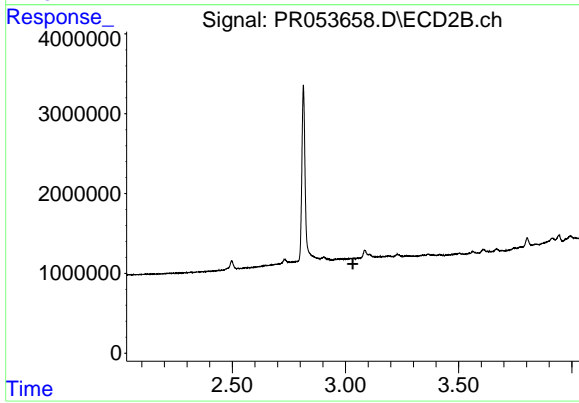
#7 AR-1016-5

R.T.: 4.388 min  
 Delta R.T.: 0.036 min  
 Response: 794093  
 Conc: 21.05 ng/ml



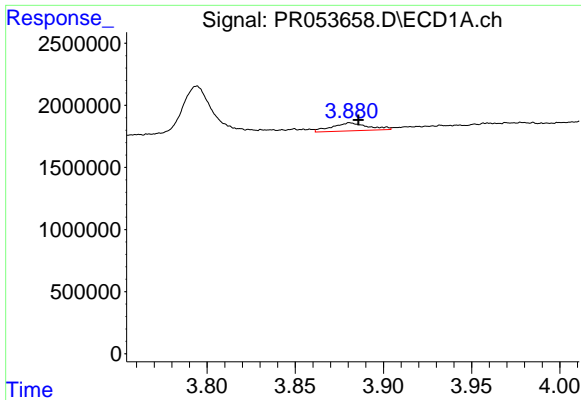
#8 AR-1221-1

R.T.: 3.794 min  
 Delta R.T.: -0.002 min  
 Response: 5220999  
 Conc: 218.37 ng/ml



#8 AR-1221-1

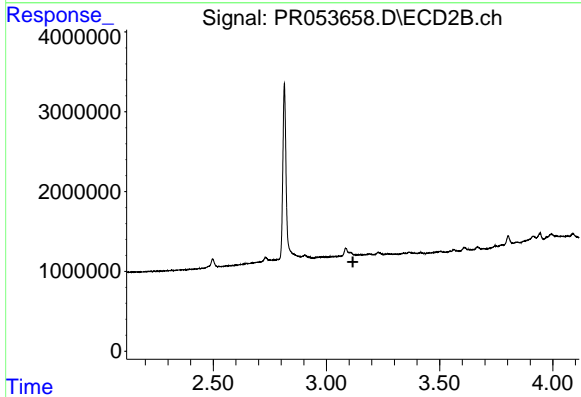
R.T.: 3.085 min  
 Delta R.T.: 0.052 min  
 Response: -396855  
 Conc: N.D.



#9 AR-1221-2

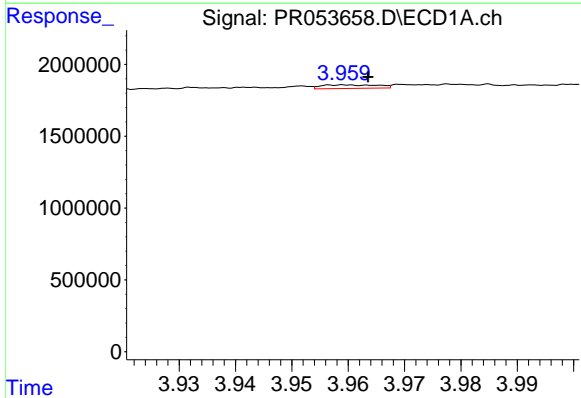
R.T.: 3.881 min  
 Delta R.T.: -0.005 min  
 Response: 905810  
 Conc: 53.70 ng/ml

Instrument :  
 ECD\_R  
 ClientSampleId :



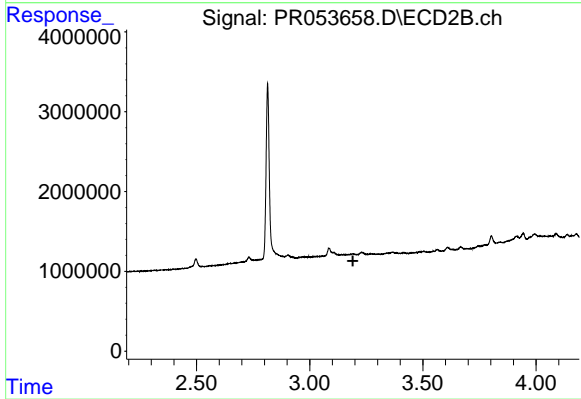
#9 AR-1221-2

R.T.: 3.085 min  
 Delta R.T.: -0.032 min  
 Response: -396855  
 Conc: N.D.



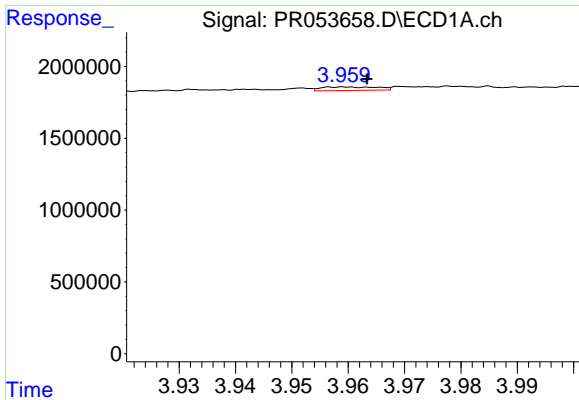
#10 AR-1221-3

R.T.: 3.959 min  
 Delta R.T.: -0.004 min  
 Response: 169997  
 Conc: 3.10 ng/ml



#10 AR-1221-3

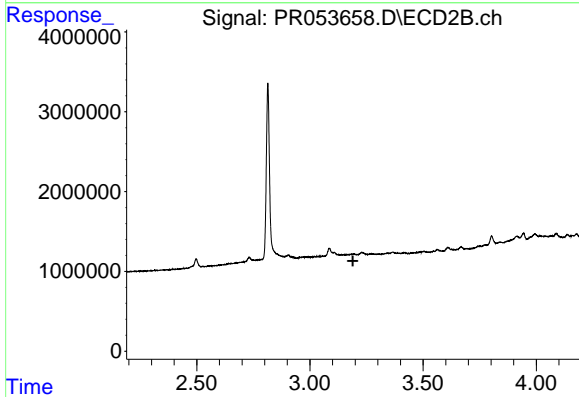
R.T.: 0.000 min  
 Exp R.T. : 3.191 min  
 Response: 0  
 Conc: N.D.



#11 AR-1232-1

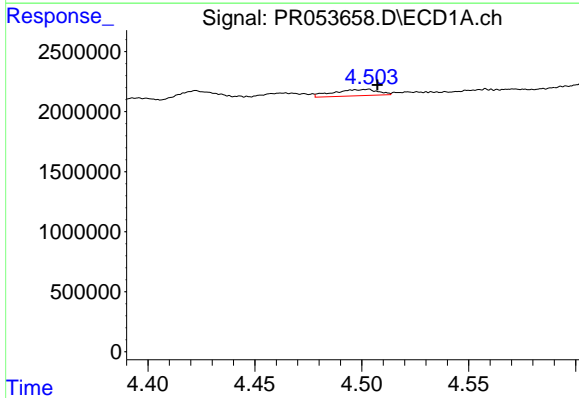
R.T.: 3.959 min  
 Delta R.T.: -0.004 min  
 Response: 169997  
 Conc: 3.71 ng/ml

Instrument :  
 ECD\_R  
 ClientSampleId :



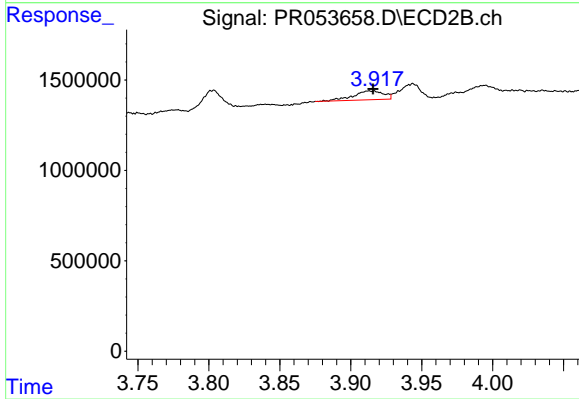
#11 AR-1232-1

R.T.: 0.000 min  
 Exp R.T. : 3.190 min  
 Response: 0  
 Conc: N.D.



#12 AR-1232-2

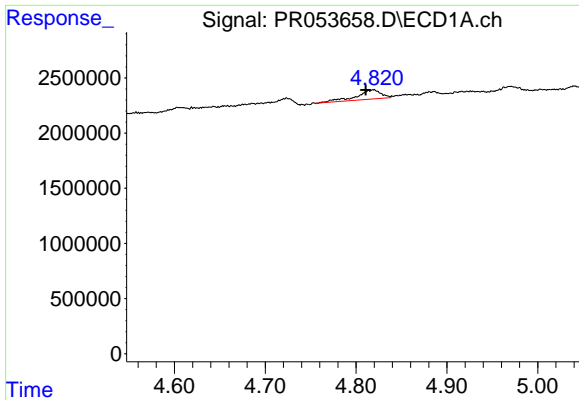
R.T.: 4.503 min  
 Delta R.T.: -0.004 min  
 Response: 771812  
 Conc: 34.13 ng/ml



#12 AR-1232-2

R.T.: 3.913 min  
 Delta R.T.: -0.003 min  
 Response: 723187  
 Conc: 25.04 ng/ml

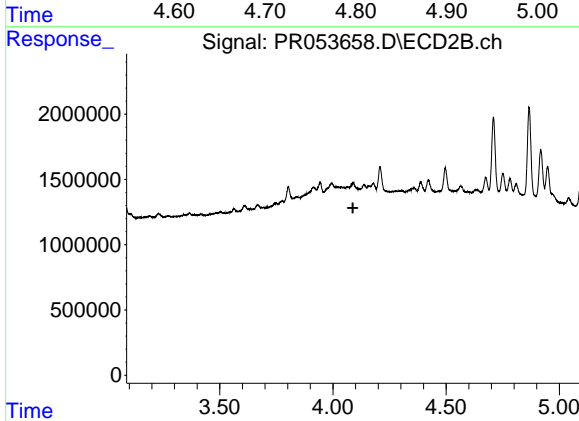




#13 AR-1232-3

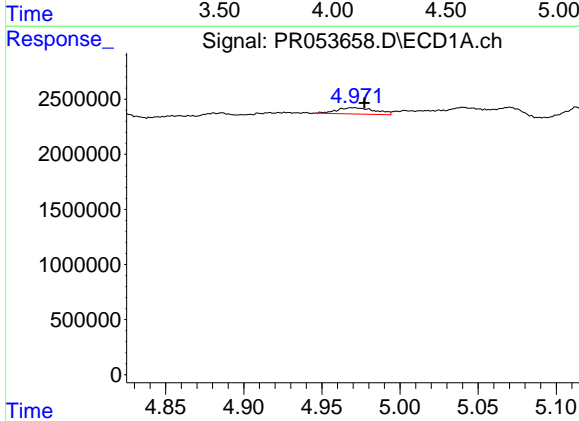
R.T.: 4.819 min  
 Delta R.T.: 0.009 min  
 Response: 1546814  
 Conc: 38.28 ng/ml

Instrument :  
 ECD\_R  
 ClientSampleId :



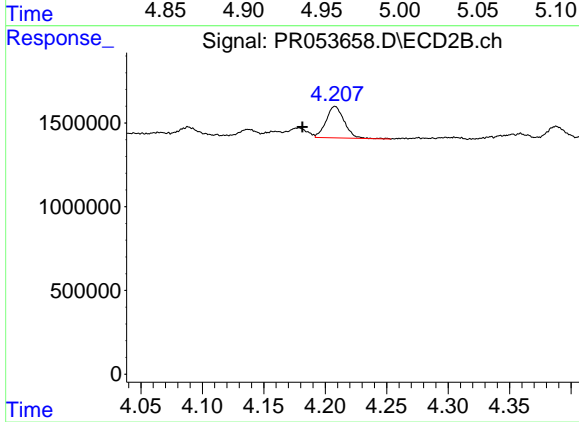
#13 AR-1232-3

R.T.: 0.000 min  
 Exp R.T. : 4.088 min  
 Response: 0  
 Conc: N.D.



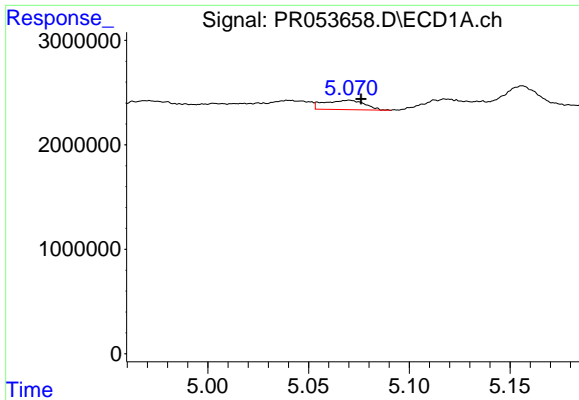
#14 AR-1232-4

R.T.: 4.970 min  
 Delta R.T.: -0.007 min  
 Response: 975455  
 Conc: 47.54 ng/ml



#14 AR-1232-4

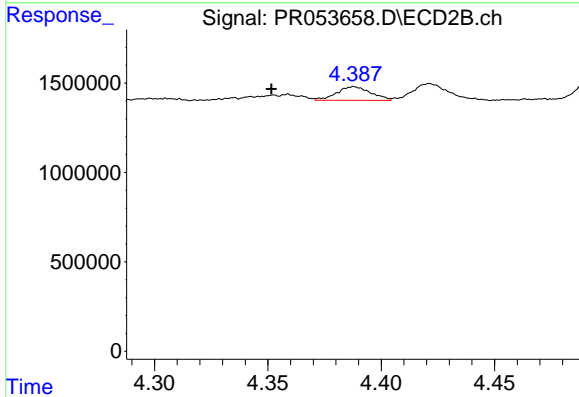
R.T.: 4.208 min  
 Delta R.T.: 0.027 min  
 Response: 1937604  
 Conc: 138.28 ng/ml



#15 AR-1232-5

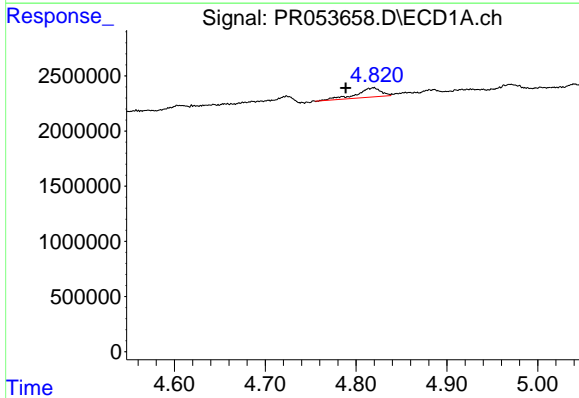
R.T.: 5.070 min  
 Delta R.T.: -0.006 min  
 Response: 1250495  
 Conc: 79.92 ng/ml

Instrument :  
 ECD\_R  
 ClientSampleId :



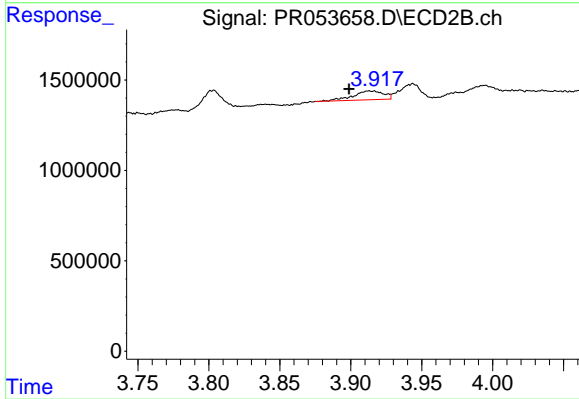
#15 AR-1232-5

R.T.: 4.388 min  
 Delta R.T.: 0.037 min  
 Response: 794093  
 Conc: 50.04 ng/ml



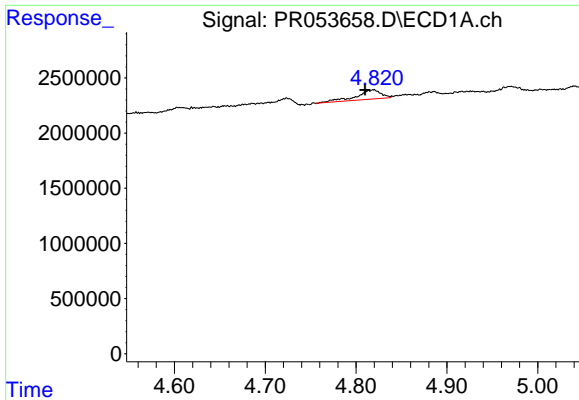
#16 AR-1242-1

R.T.: 4.819 min  
 Delta R.T.: 0.030 min  
 Response: 1546814  
 Conc: 28.96 ng/ml



#16 AR-1242-1

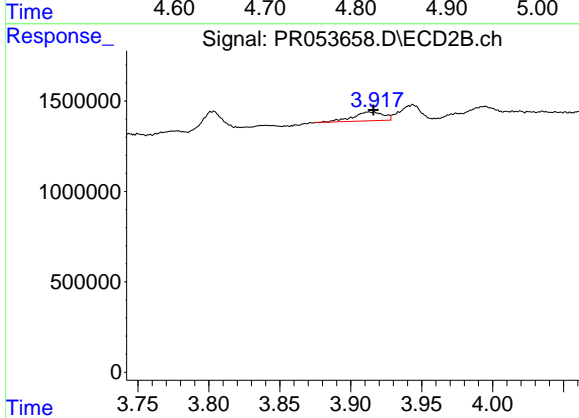
R.T.: 3.913 min  
 Delta R.T.: 0.014 min  
 Response: 723187  
 Conc: 19.87 ng/ml



#17 AR-1242-2

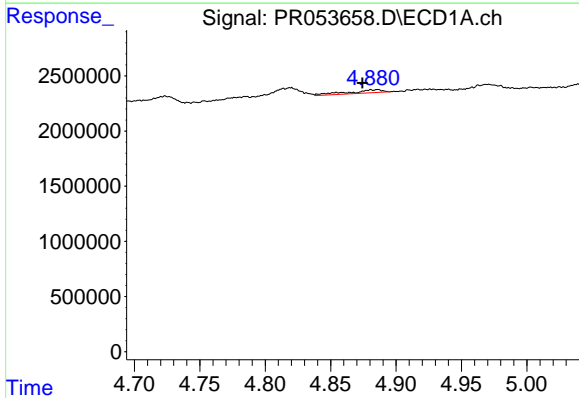
R.T.: 4.819 min  
 Delta R.T.: 0.009 min  
 Response: 1546814  
 Conc: 20.69 ng/ml

Instrument :  
 ECD\_R  
 ClientSampleId :



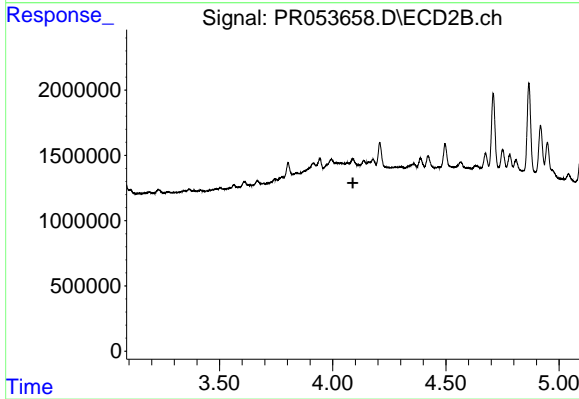
#17 AR-1242-2

R.T.: 3.913 min  
 Delta R.T.: -0.003 min  
 Response: 723187  
 Conc: 13.53 ng/ml



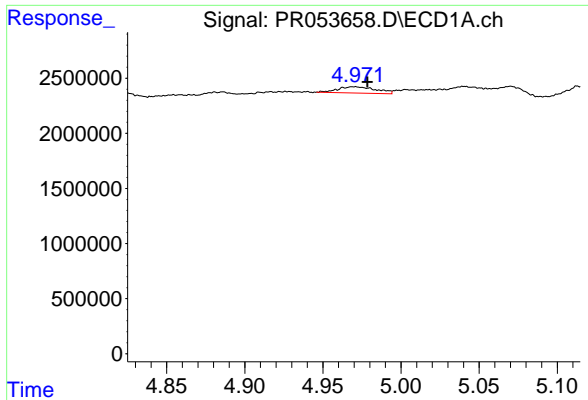
#18 AR-1242-3

R.T.: 4.886 min  
 Delta R.T.: 0.012 min  
 Response: 496546  
 Conc: 10.56 ng/ml



#18 AR-1242-3

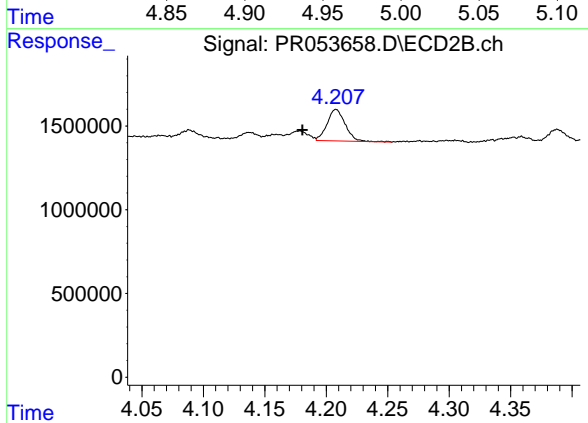
R.T.: 0.000 min  
 Exp R.T. : 4.089 min  
 Response: 0  
 Conc: N.D.



#19 AR-1242-4

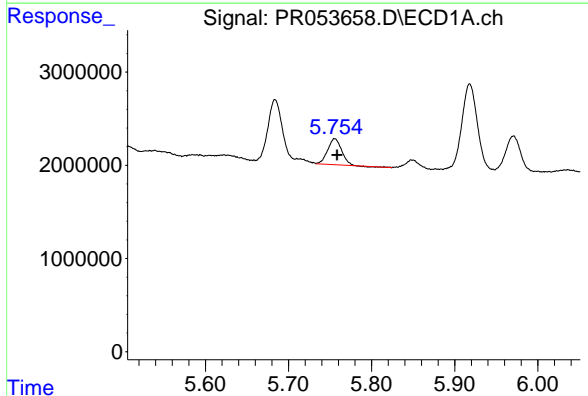
R.T.: 4.970 min  
 Delta R.T.: -0.008 min  
 Response: 975455  
 Conc: 25.25 ng/ml

Instrument :  
 ECD\_R  
 ClientSampleId :



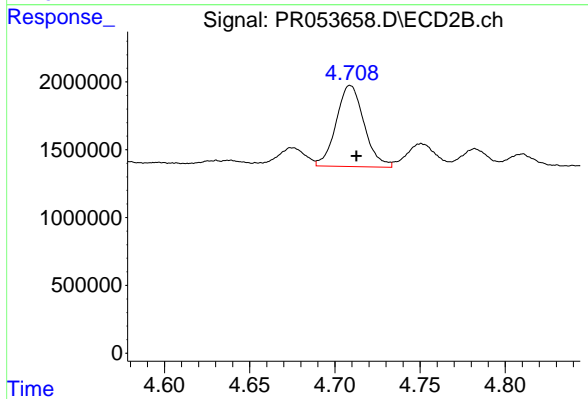
#19 AR-1242-4

R.T.: 4.208 min  
 Delta R.T.: 0.028 min  
 Response: 1937604  
 Conc: 67.30 ng/ml



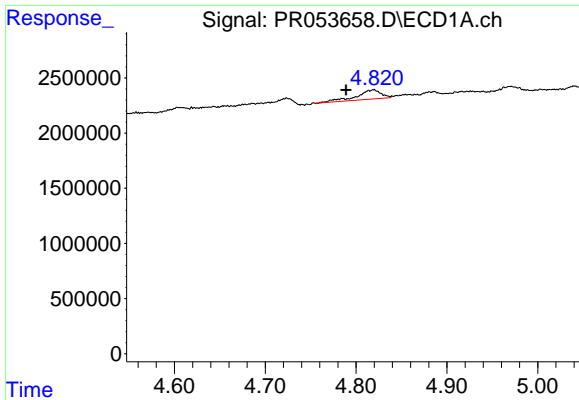
#20 AR-1242-5

R.T.: 5.756 min  
 Delta R.T.: -0.003 min  
 Response: 3277198  
 Conc: 77.10 ng/ml



#20 AR-1242-5

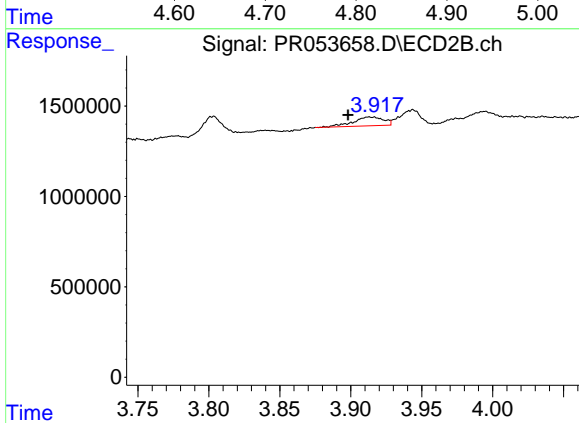
R.T.: 4.709 min  
 Delta R.T.: -0.004 min  
 Response: 6825469  
 Conc: 189.35 ng/ml



#21 AR-1248-1

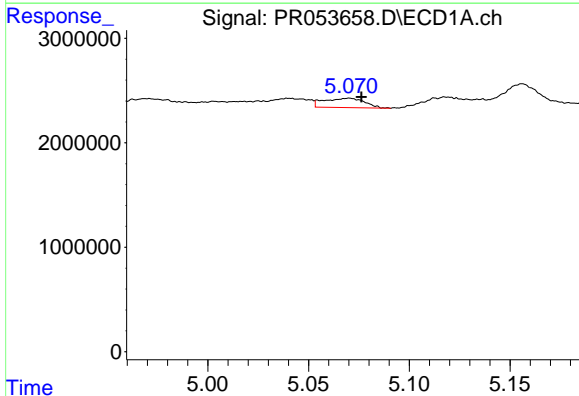
R.T.: 4.819 min  
 Delta R.T.: 0.030 min  
 Response: 1546814  
 Conc: 38.67 ng/ml

Instrument :  
 ECD\_R  
 ClientSampleId :



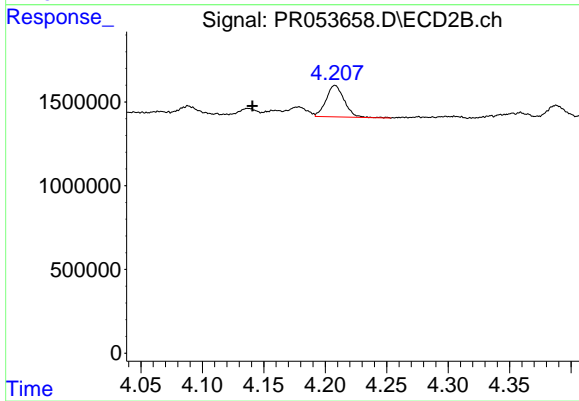
#21 AR-1248-1

R.T.: 3.913 min  
 Delta R.T.: 0.015 min  
 Response: 723187  
 Conc: 26.66 ng/ml



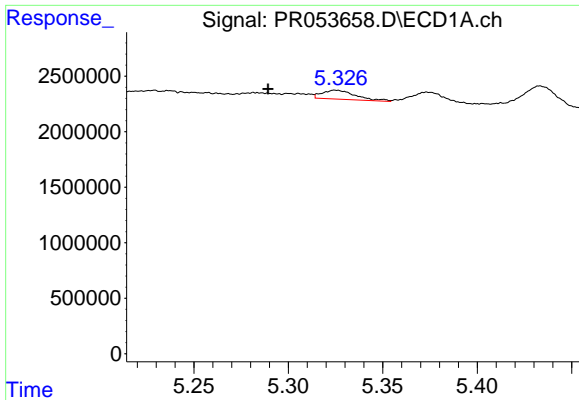
#22 AR-1248-2

R.T.: 5.070 min  
 Delta R.T.: -0.006 min  
 Response: 1250495  
 Conc: 22.54 ng/ml



#22 AR-1248-2

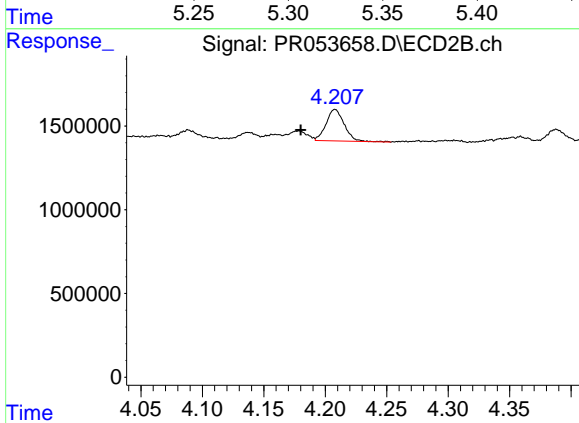
R.T.: 4.208 min  
 Delta R.T.: 0.067 min  
 Response: 1937604  
 Conc: 45.05 ng/ml



#23 AR-1248-3

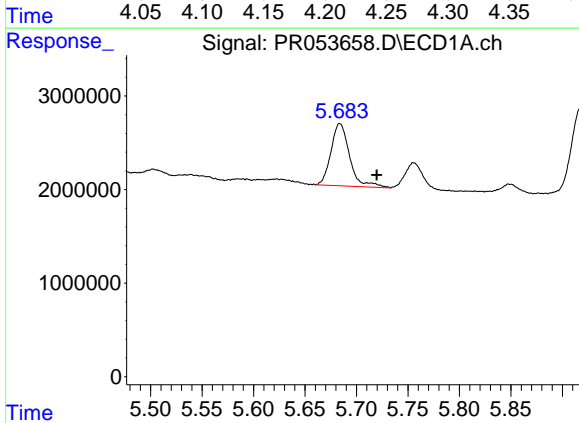
R.T.: 5.325 min  
 Delta R.T.: 0.036 min  
 Response: 1005328  
 Conc: 15.45 ng/ml

Instrument :  
 ECD\_R  
 ClientSampleId :



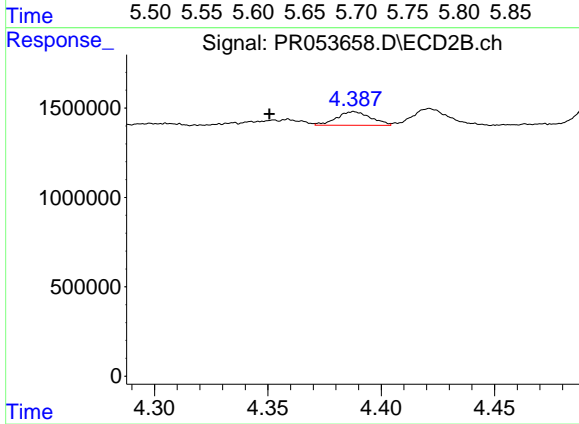
#23 AR-1248-3

R.T.: 4.208 min  
 Delta R.T.: 0.028 min  
 Response: 1937604  
 Conc: 46.24 ng/ml



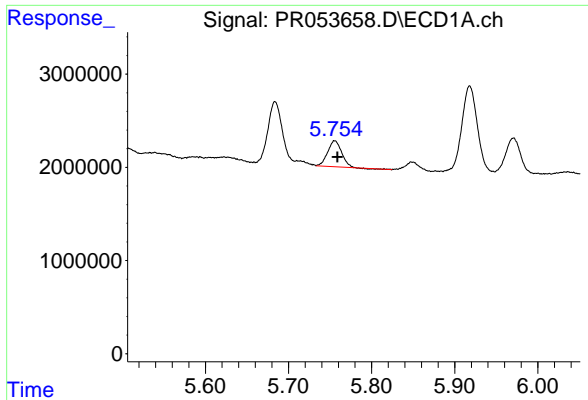
#24 AR-1248-4

R.T.: 5.684 min  
 Delta R.T.: -0.036 min  
 Response: 8385182  
 Conc: 113.86 ng/ml



#24 AR-1248-4

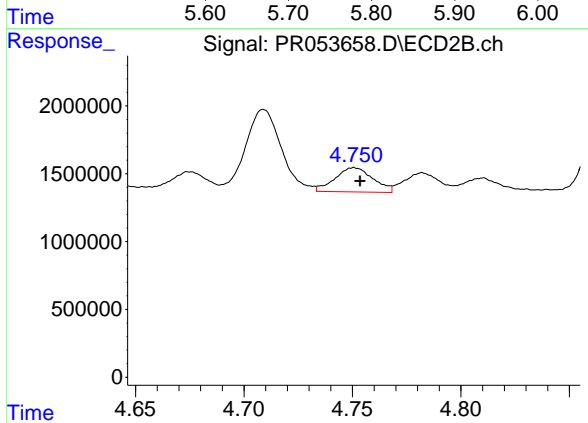
R.T.: 4.388 min  
 Delta R.T.: 0.037 min  
 Response: 794093  
 Conc: 15.64 ng/ml



#25 AR-1248-5

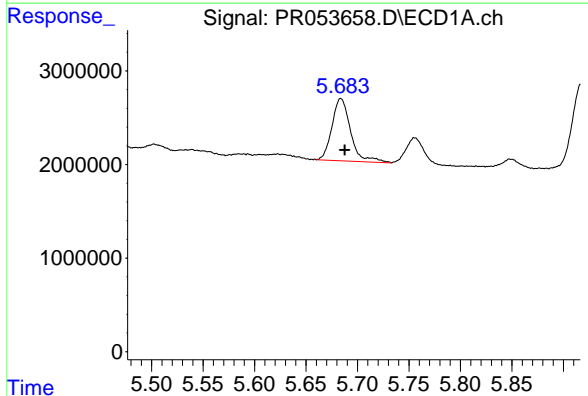
R.T.: 5.756 min  
 Delta R.T.: -0.003 min  
 Response: 3277198  
 Conc: 45.40 ng/ml

Instrument :  
 ECD\_R  
 ClientSampleId :



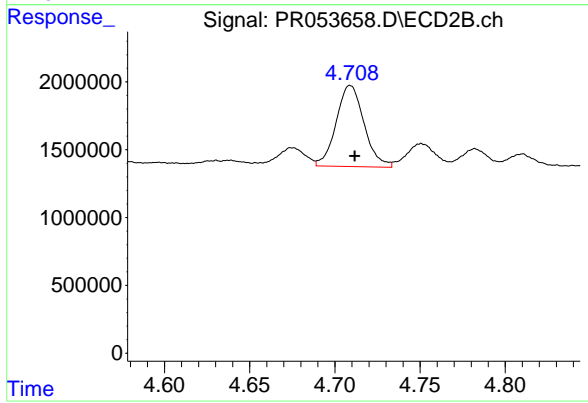
#25 AR-1248-5

R.T.: 4.751 min  
 Delta R.T.: -0.003 min  
 Response: 2193134  
 Conc: 44.47 ng/ml



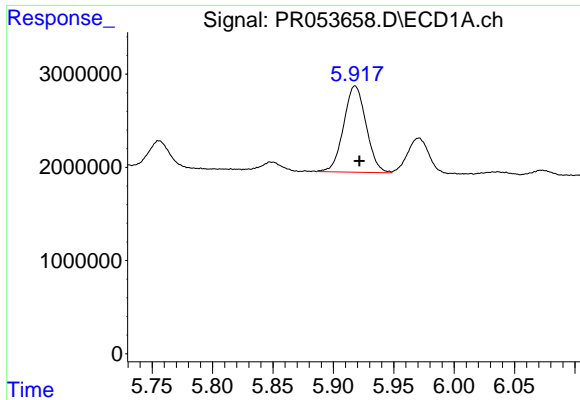
#26 AR-1254-1

R.T.: 5.684 min  
 Delta R.T.: -0.004 min  
 Response: 8385182  
 Conc: 117.37 ng/ml



#26 AR-1254-1

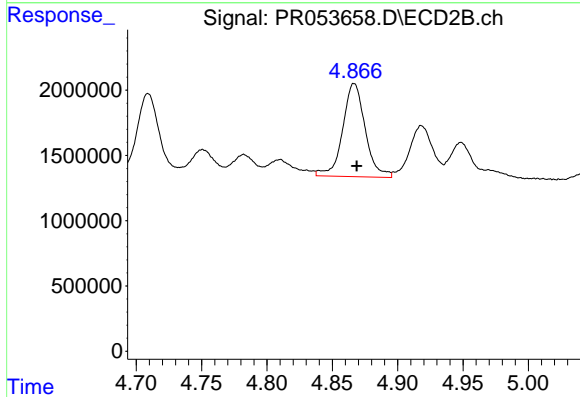
R.T.: 4.709 min  
 Delta R.T.: -0.003 min  
 Response: 6825469  
 Conc: 90.99 ng/ml



#27 AR-1254-2

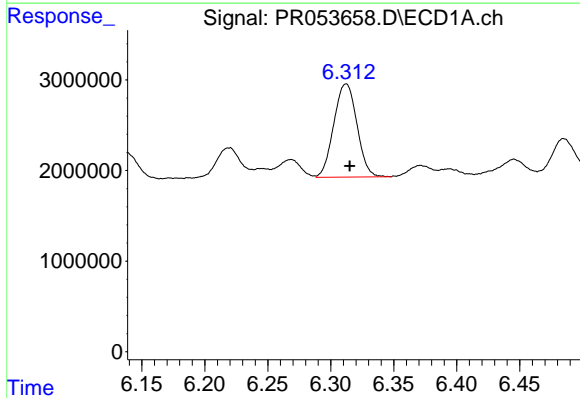
R.T.: 5.918 min  
 Delta R.T.: -0.004 min  
 Response: 11971855  
 Conc: 106.28 ng/ml

Instrument :  
 ECD\_R  
 ClientSampleId :



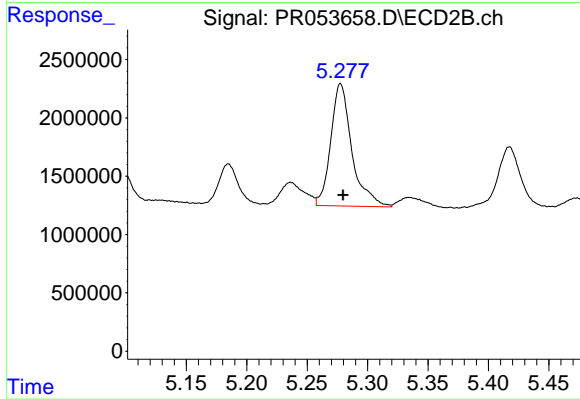
#27 AR-1254-2

R.T.: 4.867 min  
 Delta R.T.: -0.002 min  
 Response: 8549476  
 Conc: 130.06 ng/ml



#28 AR-1254-3

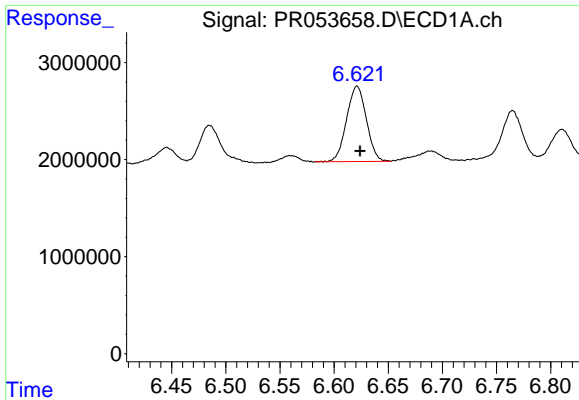
R.T.: 6.312 min  
 Delta R.T.: -0.003 min  
 Response: 13169976  
 Conc: 112.17 ng/ml



#28 AR-1254-3

R.T.: 5.278 min  
 Delta R.T.: -0.002 min  
 Response: 12798028  
 Conc: 124.12 ng/ml

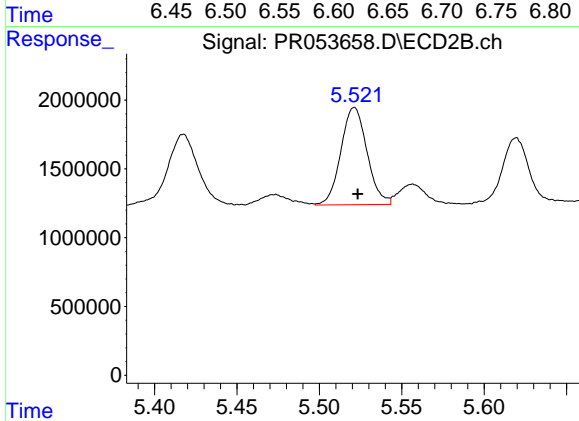




#29 AR-1254-4

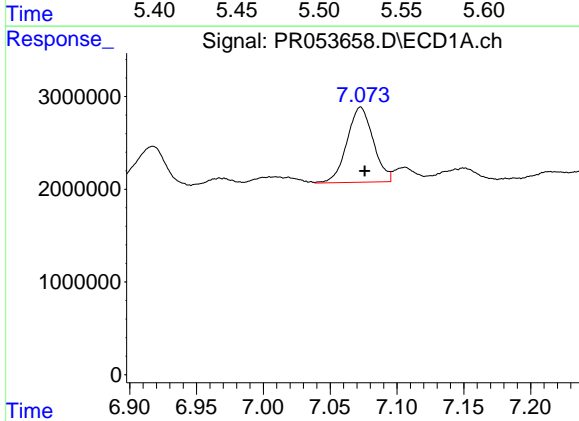
R.T.: 6.621 min  
Delta R.T.: -0.003 min  
Response: 9884350  
Conc: 108.91 ng/ml

Instrument :  
ECD\_R  
ClientSampleId :



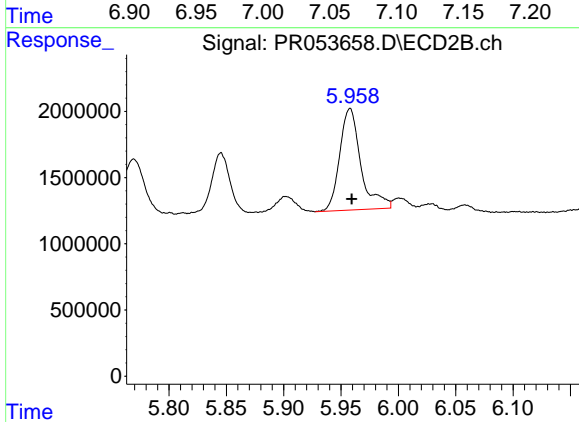
#29 AR-1254-4

R.T.: 5.521 min  
Delta R.T.: -0.002 min  
Response: 7816438  
Conc: 118.74 ng/ml



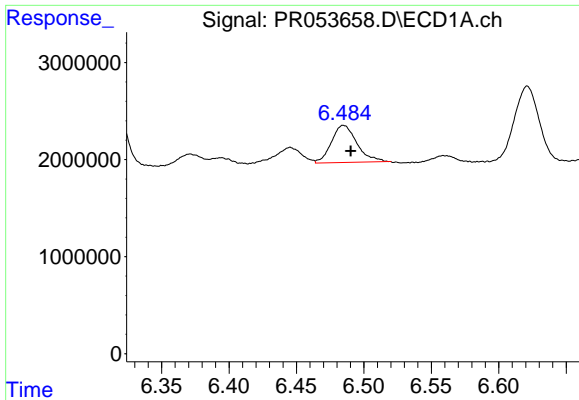
#30 AR-1254-5

R.T.: 7.073 min  
Delta R.T.: -0.003 min  
Response: 11070978  
Conc: 114.20 ng/ml



#30 AR-1254-5

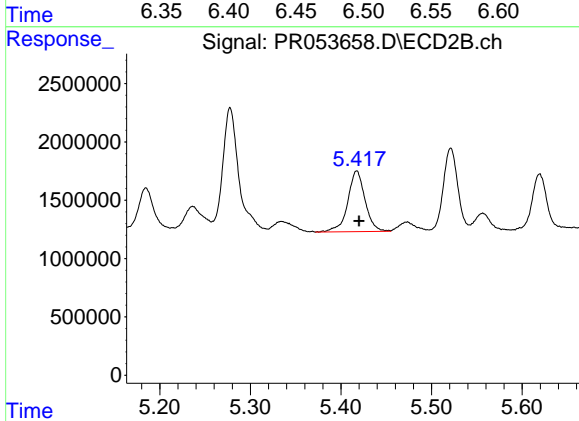
R.T.: 5.958 min  
Delta R.T.: -0.001 min  
Response: 9855177  
Conc: 104.72 ng/ml



#31 AR-1260-1

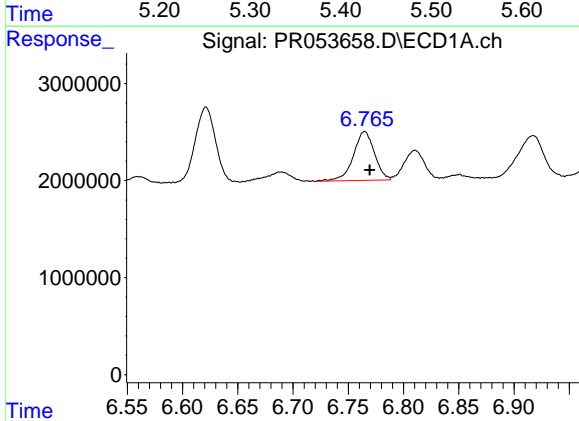
R.T.: 6.485 min  
Delta R.T.: -0.005 min  
Response: 4954491  
Conc: 58.68 ng/ml

Instrument :  
ECD\_R  
ClientSampleId :



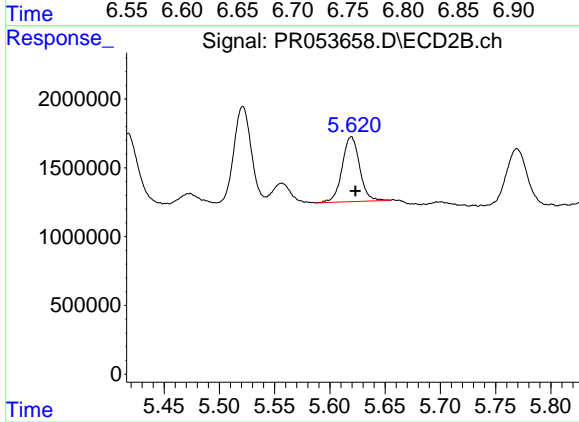
#31 AR-1260-1

R.T.: 5.418 min  
Delta R.T.: -0.002 min  
Response: 6925024  
Conc: 97.44 ng/ml



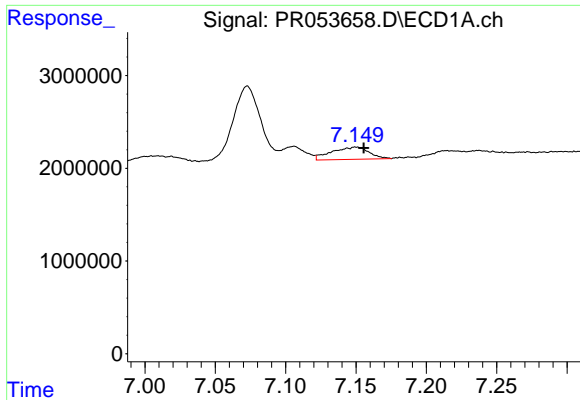
#32 AR-1260-2

R.T.: 6.765 min  
Delta R.T.: -0.005 min  
Response: 6728696  
Conc: 68.51 ng/ml



#32 AR-1260-2

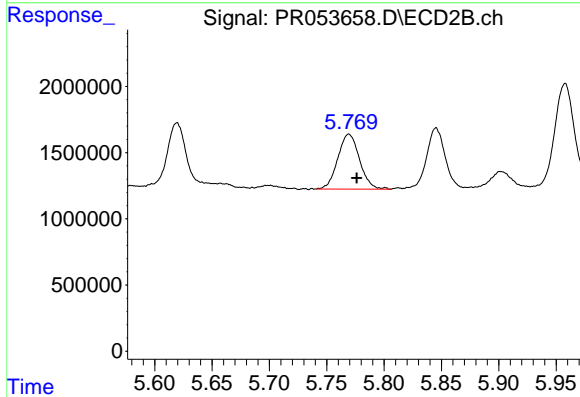
R.T.: 5.620 min  
Delta R.T.: -0.003 min  
Response: 5194061  
Conc: 63.70 ng/ml



#33 AR-1260-3

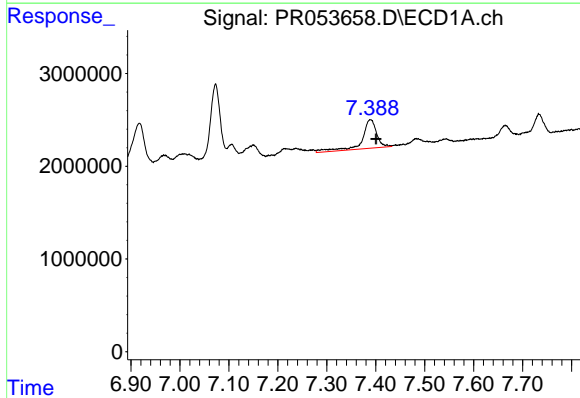
R.T.: 7.150 min  
 Delta R.T.: -0.005 min  
 Response: 2446456  
 Conc: 32.70 ng/ml

Instrument :  
 ECD\_R  
 ClientSampleId :



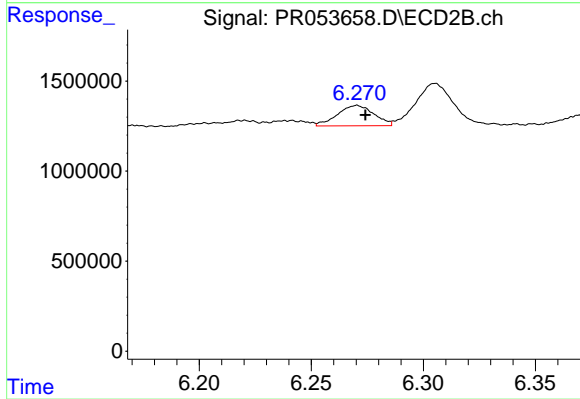
#33 AR-1260-3

R.T.: 5.769 min  
 Delta R.T.: -0.007 min  
 Response: 5461881  
 Conc: 69.53 ng/ml



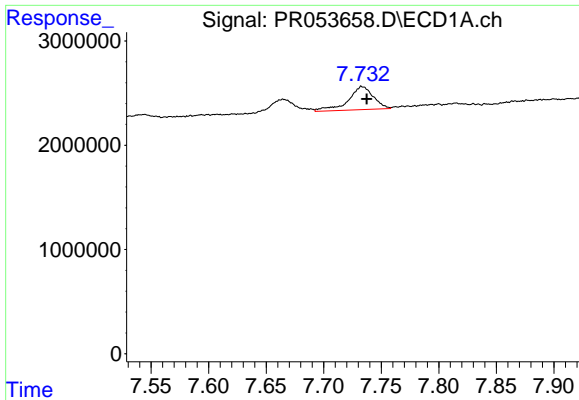
#34 AR-1260-4

R.T.: 7.389 min  
 Delta R.T.: -0.012 min  
 Response: 6423747  
 Conc: 72.34 ng/ml



#34 AR-1260-4

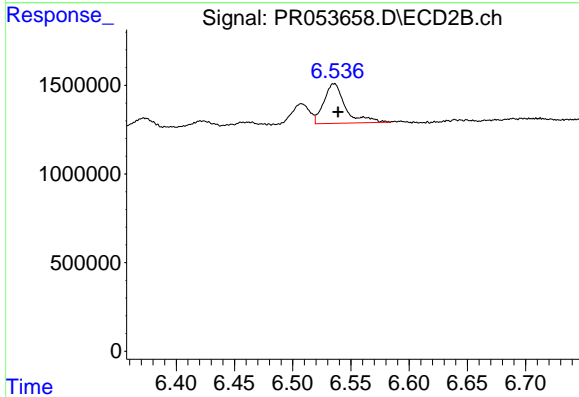
R.T.: 6.270 min  
 Delta R.T.: -0.004 min  
 Response: 1292856  
 Conc: 19.22 ng/ml



#35 AR-1260-5

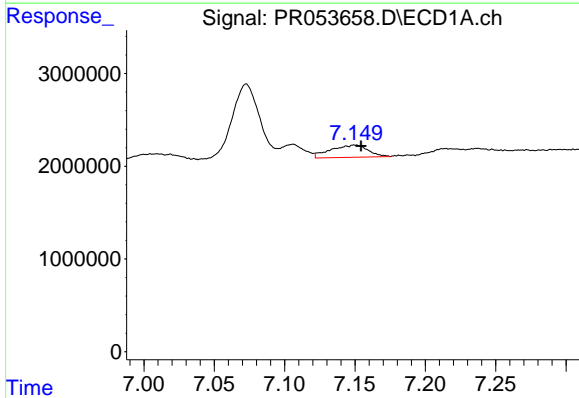
R.T.: 7.733 min  
 Delta R.T.: -0.004 min  
 Response: 3361837  
 Conc: 19.65 ng/ml

Instrument :  
 ECD\_R  
 ClientSampleId :



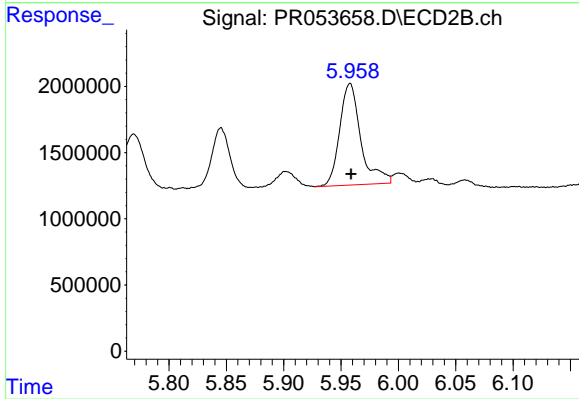
#35 AR-1260-5

R.T.: 6.536 min  
 Delta R.T.: -0.003 min  
 Response: 2892172  
 Conc: 18.97 ng/ml



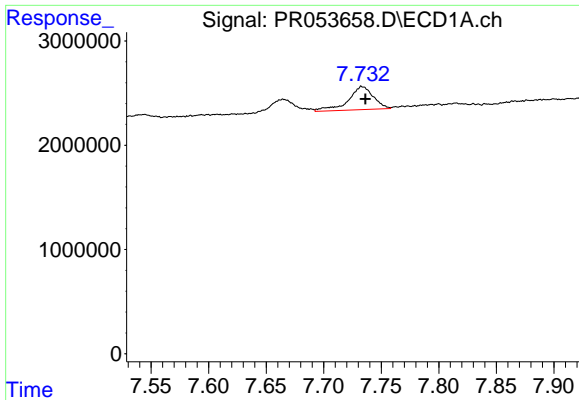
#36 AR-1262-1

R.T.: 7.150 min  
 Delta R.T.: -0.004 min  
 Response: 2446456  
 Conc: 21.40 ng/ml



#36 AR-1262-1

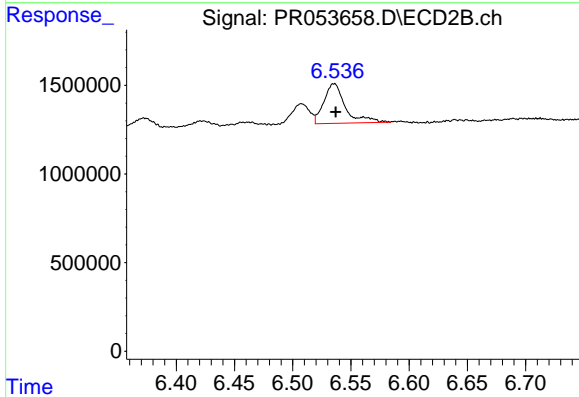
R.T.: 5.958 min  
 Delta R.T.: -0.001 min  
 Response: 9855177  
 Conc: 190.31 ng/ml



#37 AR-1262-2

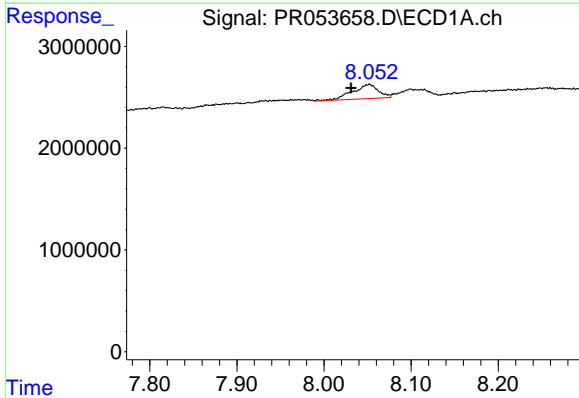
R.T.: 7.733 min  
 Delta R.T.: -0.003 min  
 Response: 3361837  
 Conc: 16.36 ng/ml

Instrument :  
 ECD\_R  
 ClientSampleId :



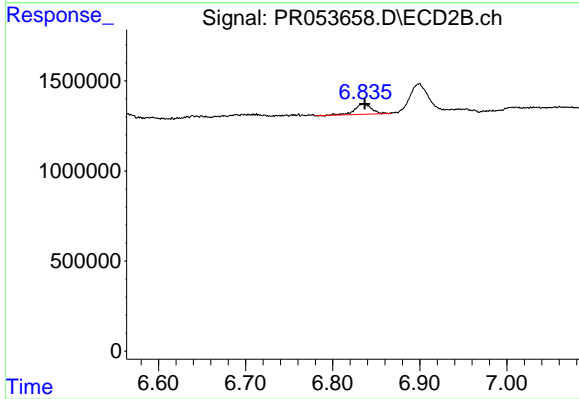
#37 AR-1262-2

R.T.: 6.536 min  
 Delta R.T.: -0.001 min  
 Response: 2892172  
 Conc: 16.20 ng/ml



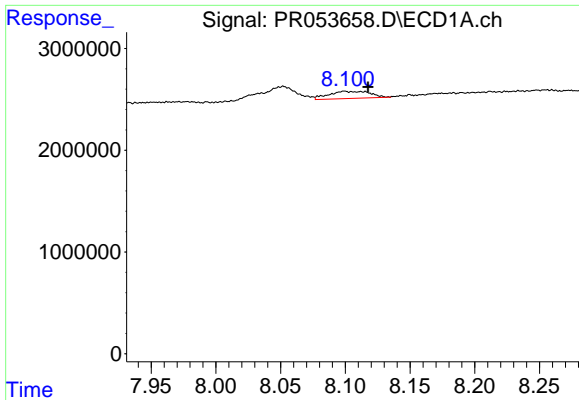
#38 AR-1262-3

R.T.: 8.052 min  
 Delta R.T.: 0.021 min  
 Response: 2866618  
 Conc: 30.32 ng/ml



#38 AR-1262-3

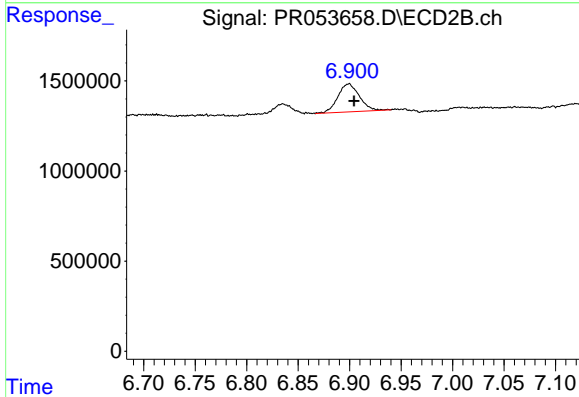
R.T.: 6.835 min  
 Delta R.T.: -0.002 min  
 Response: 785460  
 Conc: 10.82 ng/ml



#39 AR-1262-4

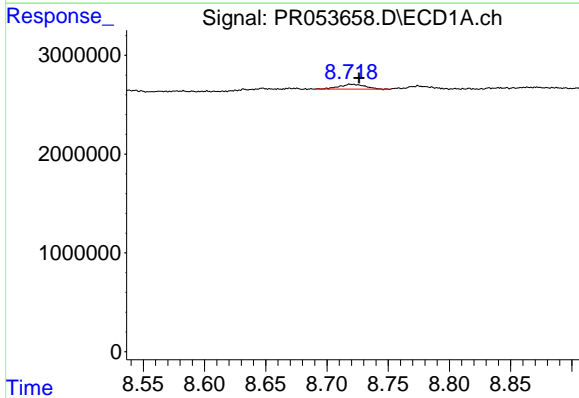
R.T.: 8.099 min  
 Delta R.T.: -0.018 min  
 Response: 1553917  
 Conc: 27.89 ng/ml

Instrument :  
 ECD\_R  
 ClientSampleId :



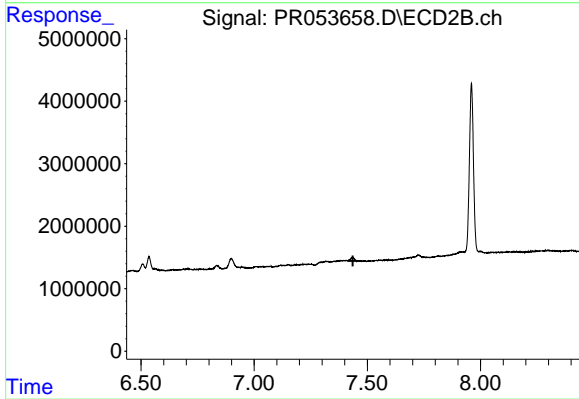
#39 AR-1262-4

R.T.: 6.899 min  
 Delta R.T.: -0.005 min  
 Response: 2282939  
 Conc: 16.94 ng/ml



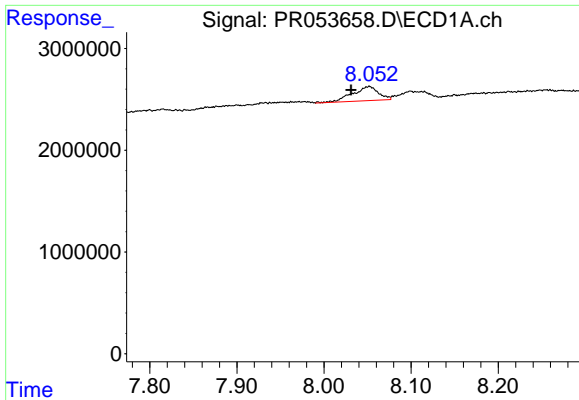
#40 AR-1262-5

R.T.: 8.720 min  
 Delta R.T.: -0.007 min  
 Response: 728178  
 Conc: 9.44 ng/ml



#40 AR-1262-5

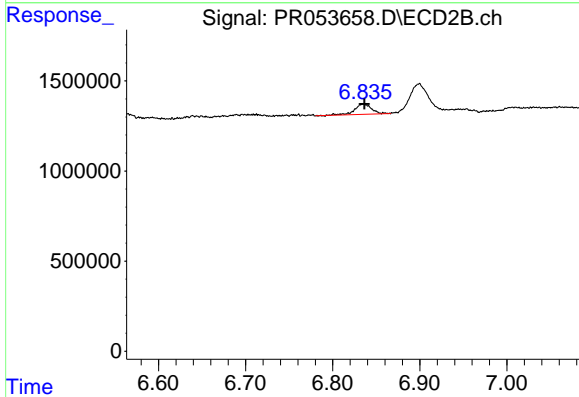
R.T.: 0.000 min  
 Exp R.T. : 7.436 min  
 Response: 0  
 Conc: N.D.



#41 AR-1268-1

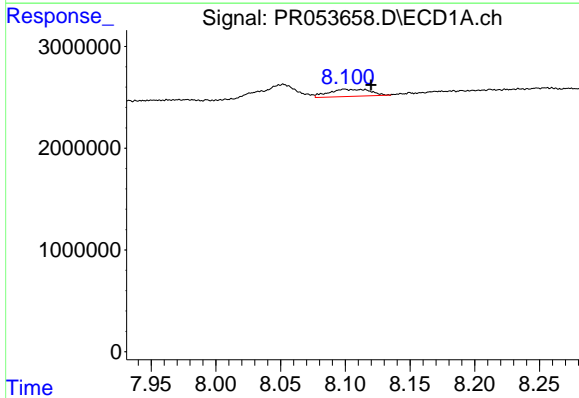
R.T.: 8.052 min  
 Delta R.T.: 0.021 min  
 Response: 2866618  
 Conc: 11.75 ng/ml

Instrument :  
 ECD\_R  
 ClientSampleId :



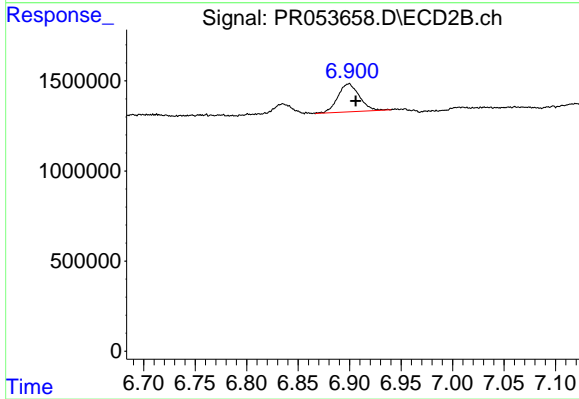
#41 AR-1268-1

R.T.: 6.835 min  
 Delta R.T.: -0.001 min  
 Response: 785460  
 Conc: 3.74 ng/ml



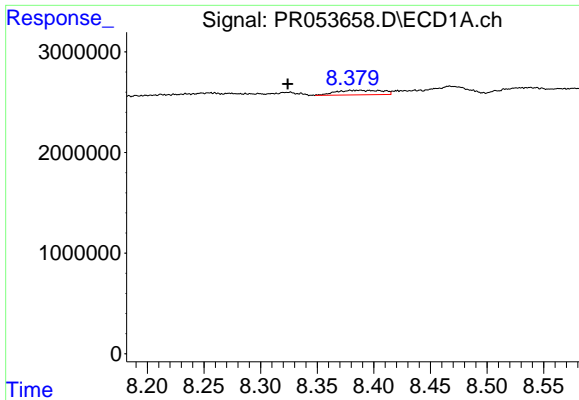
#42 AR-1268-2

R.T.: 8.099 min  
 Delta R.T.: -0.020 min  
 Response: 1553917  
 Conc: 6.93 ng/ml



#42 AR-1268-2

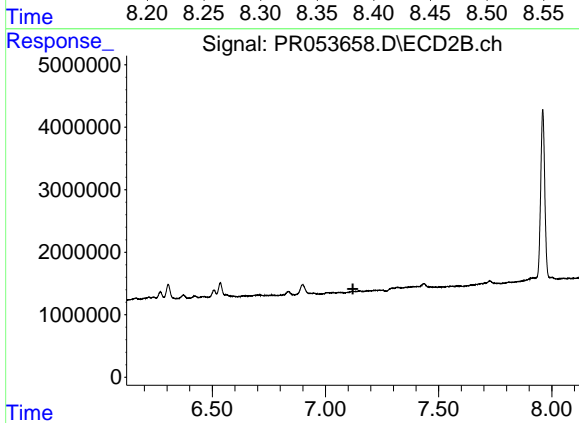
R.T.: 6.899 min  
 Delta R.T.: -0.007 min  
 Response: 2282939  
 Conc: 11.98 ng/ml



#43 AR-1268-3

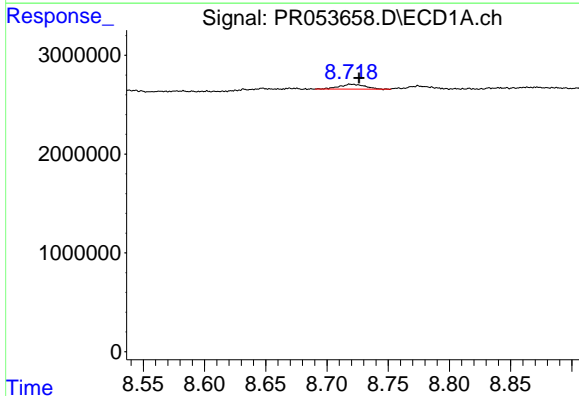
R.T.: 8.379 min  
 Delta R.T.: 0.056 min  
 Response: 1310020  
 Conc: 6.93 ng/ml

Instrument :  
 ECD\_R  
 ClientSampleId :



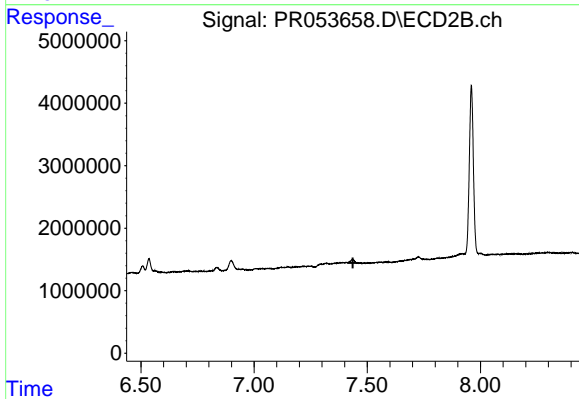
#43 AR-1268-3

R.T.: 0.000 min  
 Exp R.T. : 7.121 min  
 Response: 0  
 Conc: N.D.



#44 AR-1268-4

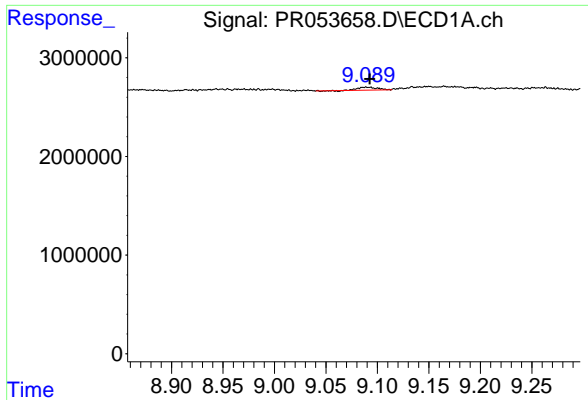
R.T.: 8.720 min  
 Delta R.T.: -0.007 min  
 Response: 728178  
 Conc: 8.76 ng/ml



#44 AR-1268-4

R.T.: 0.000 min  
 Exp R.T. : 7.437 min  
 Response: 0  
 Conc: N.D.

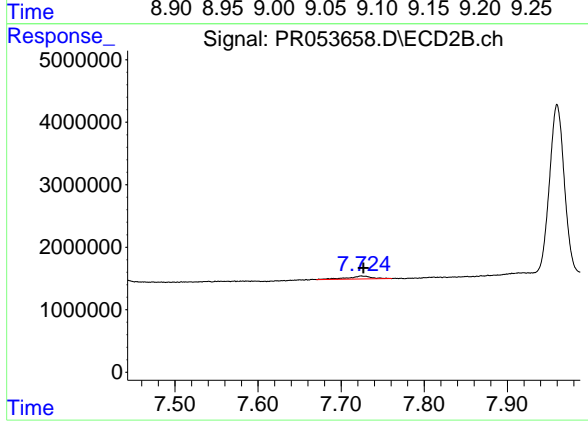




#45 AR-1268-5

R.T.: 9.089 min  
Delta R.T.: -0.003 min  
Response: 358573  
Conc: 0.58 ng/ml

Instrument :  
ECD\_R  
ClientSampleId :



#45 AR-1268-5

R.T.: 7.724 min  
Delta R.T.: -0.003 min  
Response: 937287  
Conc: 1.82 ng/ml