

Data Path : Z:\pestpcbsrv\HPCHEM1\ECD_R\Data\PR030123\
 Data File : PR059894.D
 Signal(s) : Signal #1: ECD1A.ch Signal #2: ECD2B.ch
 Acq On : 28 Feb 2023 18:42
 Operator : YP\AJ
 Sample : 01694-04
 Misc :
 ALS Vial : 37 Sample Multiplier: 1

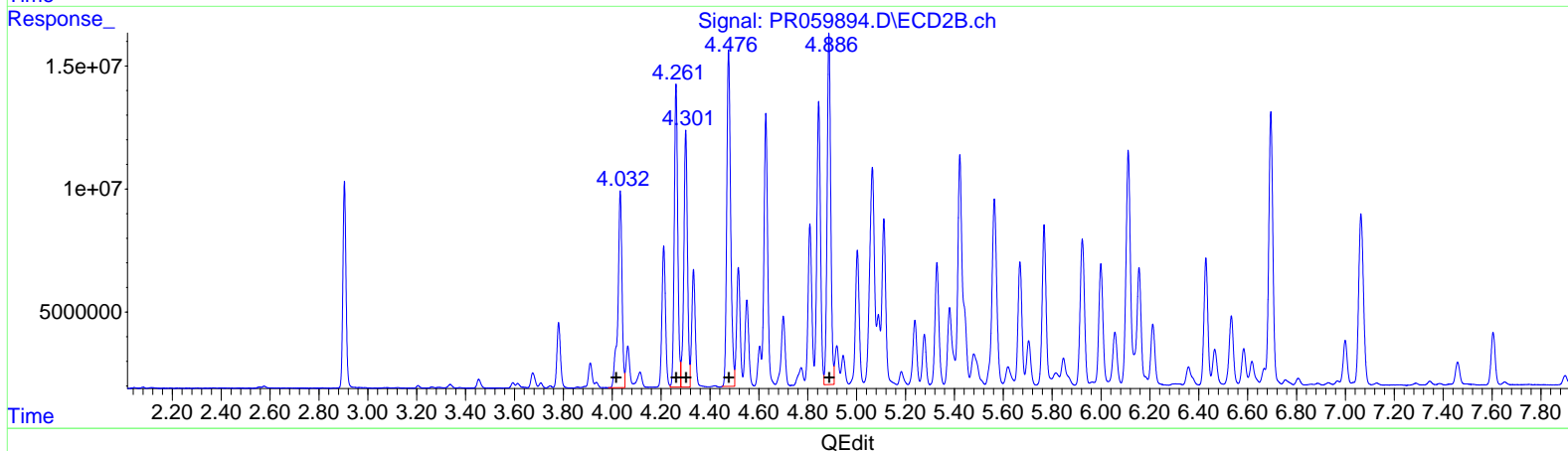
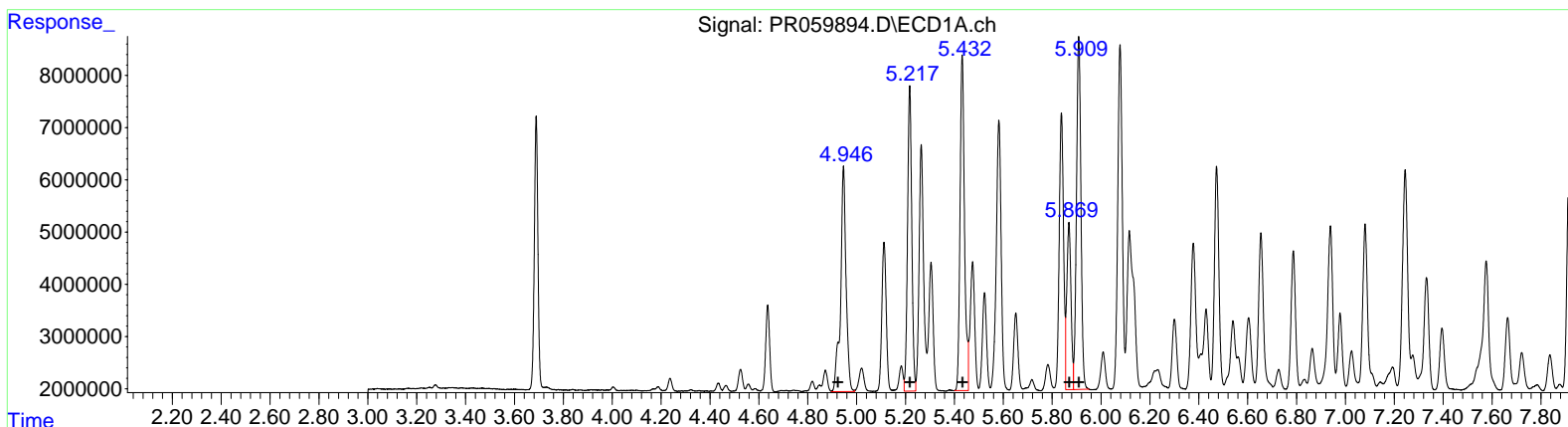
Instrument :
 ECD_R
 ClientSampleId :
 EXHP3

Manual Integrations APPROVED

Reviewed By :Yogesh Patel 03/01/2023
 Supervised By :Ankita Jodhani 03/01/2023

Integration File signal 1: autoint1.e
 Integration File signal 2: autoint2.e
 Quant Time: Mar 01 08:50:42 2023
 Quant Method : Z:\pestpcbsrv\HPCHEM1\ECD_R\Method\PR022823CLP.M
 Quant Title : GC EXTRACTABLES
 QLast Update : Tue Feb 28 05:24:37 2023
 Response via : Initial Calibration
 Integrator: ChemStation

Volume Inj. : 1 µl
 Signal #1 Phase : ZB MR1 Signal #2 Phase: ZB MR2
 Signal #1 Info : 30Mx0.32mmx 0.5µm Signal #2 Info : 30M x 0.32mm x 0.25µm



QEdit

(21) AR-1248-1 (L5)		
R.T.	Response	Conc
4.95	67366081	1111.68
5.22	70145633	863.91
5.43	81474562	867.38
5.87	38416583	399.71
5.91	86014099	926.98

(21) AR-1248-1 #2 (L5)		
R.T.	Response	Conc
4.03	93081507	1069.42
4.26	121743916	943.11
4.30	107842517	829.52
4.48	150965312	956.70
4.89	146205370	1026.05

Data Path : Z:\pestpcbsrv\HPCHEM1\ECD_R\Data\PR030123\
 Data File : PR059894.D
 Signal(s) : Signal #1: ECD1A.ch Signal #2: ECD2B.ch
 Acq On : 28 Feb 2023 18:42
 Operator : YP\AJ
 Sample : 01694-04
 Misc :
 ALS Vial : 37 Sample Multiplier: 1

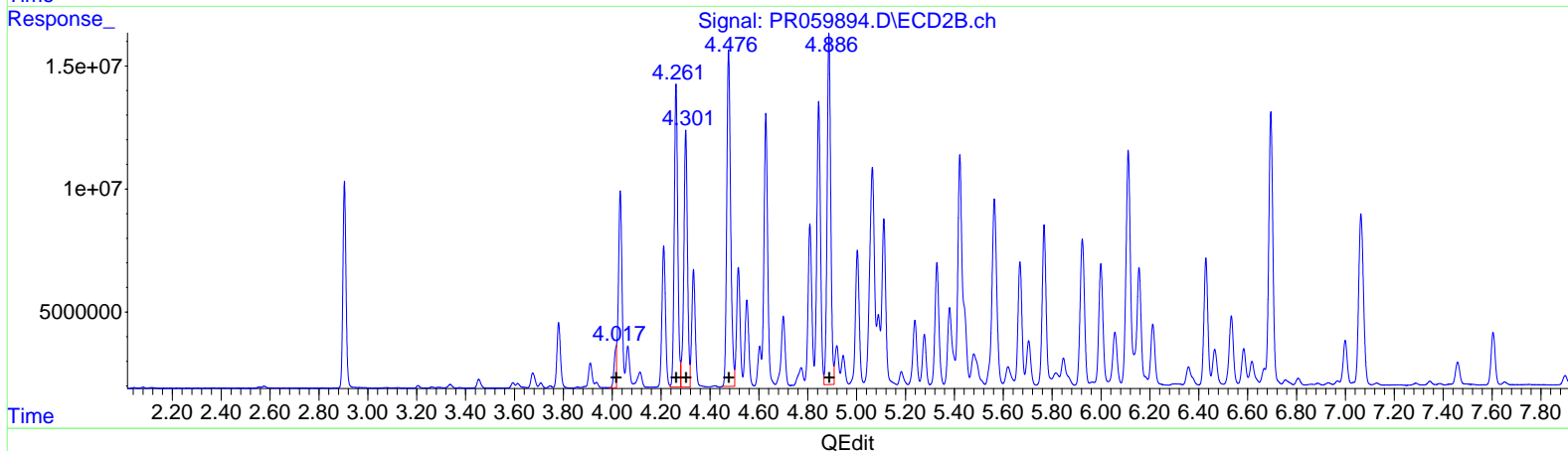
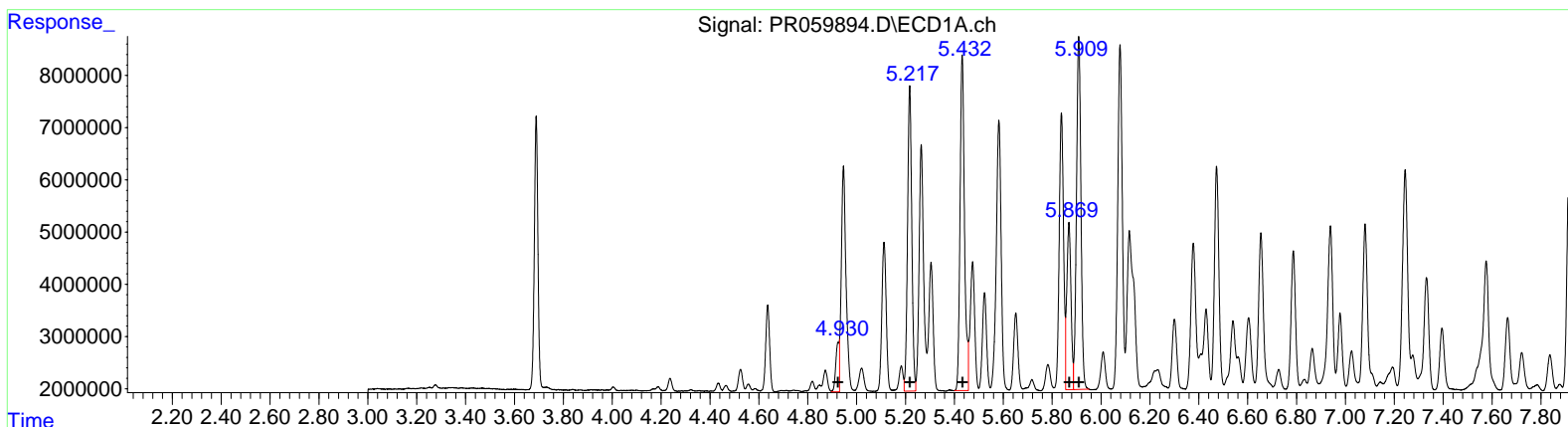
Instrument :
 ECD_R
 ClientSampleId :
 EXHP3

Manual Integrations APPROVED

Reviewed By :Yogesh Patel 03/01/2023
 Supervised By :Ankita Jodhani 03/01/2023

Integration File signal 1: autoint1.e
 Integration File signal 2: autoint2.e
 Quant Time: Mar 01 08:50:42 2023
 Quant Method : Z:\pestpcbsrv\HPCHEM1\ECD_R\Method\PR022823CLP.M
 Quant Title : GC EXTRACTABLES
 QLast Update : Tue Feb 28 05:24:37 2023
 Response via : Initial Calibration
 Integrator: ChemStation

Volume Inj. : 1 µl
 Signal #1 Phase : ZB MR1 Signal #2 Phase: ZB MR2
 Signal #1 Info : 30Mx0.32mmx 0.5µm Signal #2 Info : 30M x 0.32mm x 0.25µm



QEdit

(21) AR-1248-1 (L5)		
R.T.	Response	Conc
4.93	9585577	158.18
5.22	70145633	863.91
5.43	81474562	867.38
5.87	38416583	399.71
5.91	86014099	926.98

(21) AR-1248-1 #2 (L5)		
R.T.	Response	Conc
4.02	11084628	127.35
4.26	121743916	943.11
4.30	107842517	829.52
4.48	150965312	956.70
4.89	146205370	1026.05

Data Path : Z:\pestpcbsrv\HPCHEM1\ECD_R\Data\PR030123\
 Data File : PR059894.D
 Signal(s) : Signal #1: ECD1A.ch Signal #2: ECD2B.ch
 Acq On : 28 Feb 2023 18:42
 Operator : YP\AJ
 Sample : 01694-04
 Misc :
 ALS Vial : 37 Sample Multiplier: 1

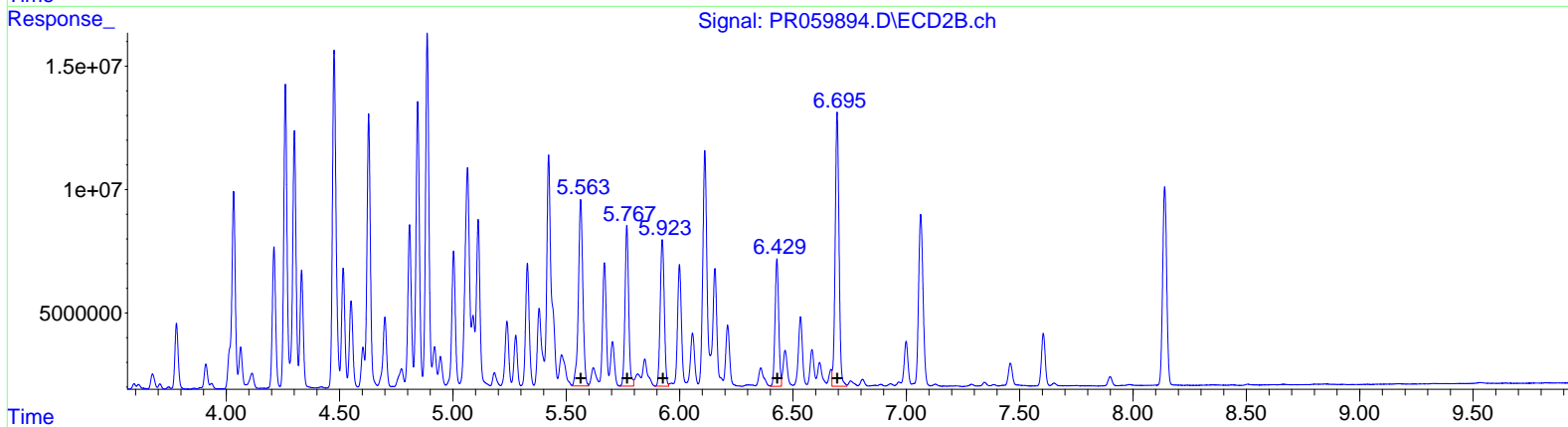
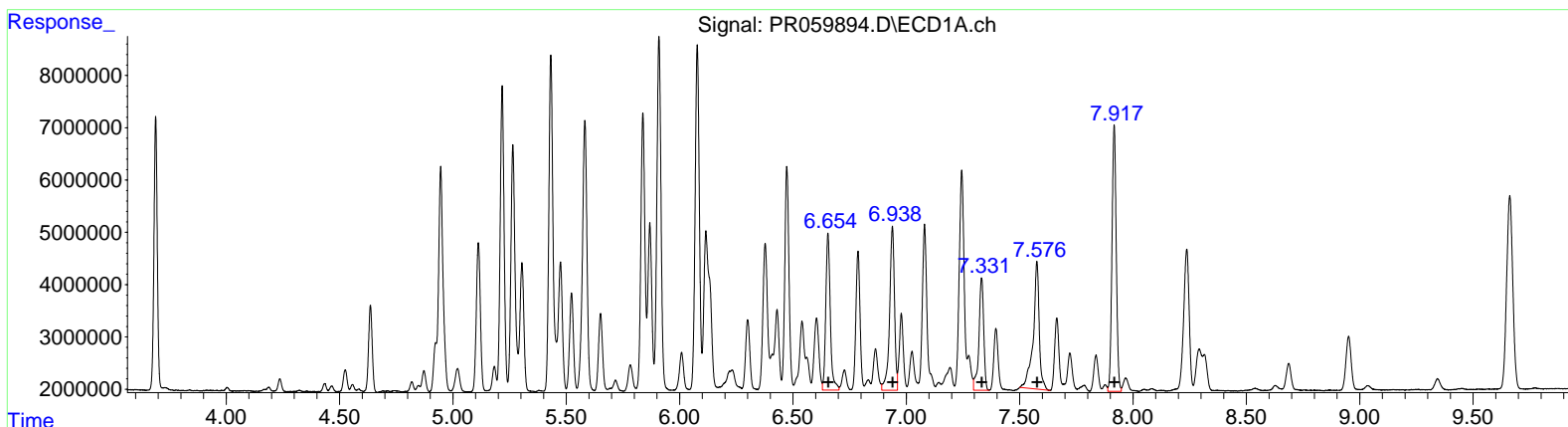
Instrument :
 ECD_R
 ClientSampleId :
 EXHP3

Manual Integrations APPROVED

Reviewed By :Yogesh Patel 03/01/2023
 Supervised By :Ankita Jodhani 03/01/2023

Integration File signal 1: autoint1.e
 Integration File signal 2: autoint2.e
 Quant Time: Mar 01 08:50:42 2023
 Quant Method : Z:\pestpcbsrv\HPCHEM1\ECD_R\Method\PR022823CLP.M
 Quant Title : GC EXTRACTABLES
 QLast Update : Tue Feb 28 05:24:37 2023
 Response via : Initial Calibration
 Integrator: ChemStation

Volume Inj. : 1 µl
 Signal #1 Phase : ZB MR1 Signal #2 Phase: ZB MR2
 Signal #1 Info : 30Mx0.32mmx 0.5µm Signal #2 Info : 30M x 0.32mm x 0.25µm



QEdit

(31) AR-1260-1 (L7)		
R.T.	Response	Conc
6.65	41483439	337.21
6.94	47072239	335.06
7.33	31715026	292.82
7.58	45065050	365.32
7.92	66616633	289.51
(31) AR-1260-1 #2 (L7)		
R.T.	Response	Conc
5.56	102808731	449.54
5.77	73272087	272.40
5.92	73844702	291.52
6.43	57855625	275.07
6.69	131693029	277.07

Data Path : Z:\pestpcbsrv\HPCHEM1\ECD_R\Data\PR030123\
 Data File : PR059894.D
 Signal(s) : Signal #1: ECD1A.ch Signal #2: ECD2B.ch
 Acq On : 28 Feb 2023 18:42
 Operator : YP\AJ
 Sample : 01694-04
 Misc :
 ALS Vial : 37 Sample Multiplier: 1

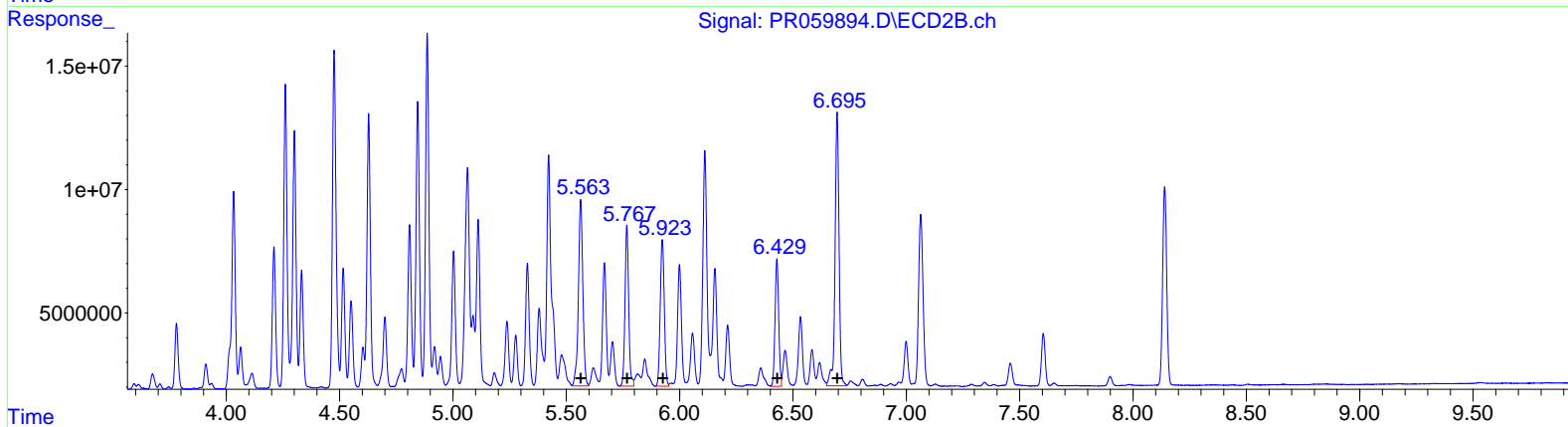
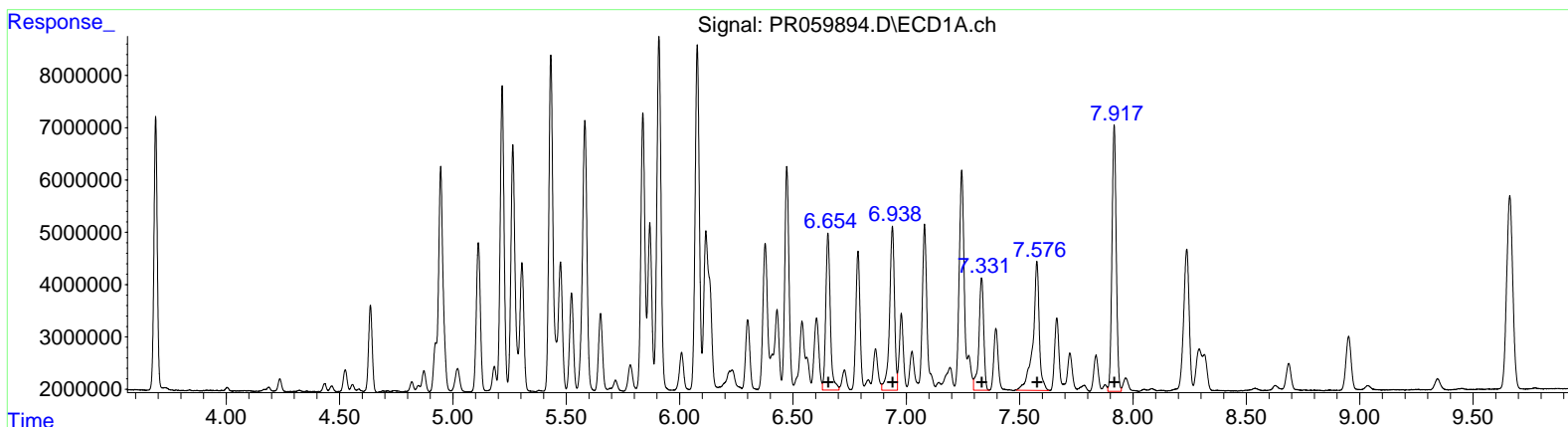
Instrument :
 ECD_R
 ClientSampleId :
 EXHP3

Manual Integrations APPROVED

Reviewed By : Yogesh Patel 03/01/2023
 Supervised By : Ankita Jodhani 03/01/2023

Integration File signal 1: autoint1.e
 Integration File signal 2: autoint2.e
 Quant Time: Mar 01 08:50:42 2023
 Quant Method : Z:\pestpcbsrv\HPCHEM1\ECD_R\Method\PR022823CLP.M
 Quant Title : GC EXTRACTABLES
 QLast Update : Tue Feb 28 05:24:37 2023
 Response via : Initial Calibration
 Integrator: ChemStation

Volume Inj. : 1 µl
 Signal #1 Phase : ZB MR1 Signal #2 Phase: ZB MR2
 Signal #1 Info : 30Mx0.32mmx 0.5µm Signal #2 Info : 30M x 0.32mm x 0.25µm



QEdit

(31) AR-1260-1 (L7)		
R.T.	Response	Conc
6.65	41483439	337.21
6.94	47072239	335.06
7.33	31715026	292.82
7.58	47709571	386.76
7.92	66616633	289.51
(31) AR-1260-1 #2 (L7)		
R.T.	Response	Conc
5.56	102808731	449.54
5.77	73272087	272.40
5.92	73844702	291.52
6.43	57855625	275.07
6.69	136602447	287.40