

Data Path : Z:\pestpcbsrv\HPCHEM1\ECD_R\Data\PR030222\
 Data File : PR053741.D
 Signal(s) : Signal #1: ECD1A.ch Signal #2: ECD2B.ch
 Acq On : 02 Mar 2022 09:43
 Operator : AJ\MA
 Sample : AR1254CCC400
 Misc :
 ALS Vial : 6 Sample Multiplier: 1

Instrument :
 ECD_R
 ClientSampleId :

Integration File signal 1: autoint1.e
 Integration File signal 2: autoint2.e
 Quant Time: Mar 03 03:32:17 2022
 Quant Method : Z:\pestpcbsrv\HPCHEM1\ECD_R\Method\PR021522CLP.M
 Quant Title : GC EXTRACTABLES
 QLast Update : Wed Feb 16 05:21:54 2022
 Response via : Initial Calibration
 Integrator: ChemStation

Volume Inj. : 1 µl
 Signal #1 Phase : ZB MR1 Signal #2 Phase: ZB MR2
 Signal #1 Info : 30Mx0.32mmx 0.5µm Signal #2 Info : 30M x 0.32mm x 0.25µm

Compound	RT#1	RT#2	Resp#1	Resp#2	ng/ml	ng/ml

System Monitoring Compounds						
1) SA Tetrachlo...	3.565	2.811	43248374	27226389	22.078	22.641
2) SA Decachlor...	9.374	7.954	72044863	57286100	44.224	42.696
Target Compounds						
3) L1 AR-1016-1	4.784	3.894	738989	196094	11.498	4.364 #
4) L1 AR-1016-2	4.809	3.894	1084268	196094	11.904	2.960 #
5) L1 AR-1016-3	4.869	4.136f	503937	13425878	8.930	378.500 #
6) L1 AR-1016-4	4.972	4.136	465513	13425878	10.065	425.825 #
7) L1 AR-1016-5	5.283	4.346	10593218	8542023	223.855	226.406
9) L2 AR-1221-2	3.879	0.000	675359	0	40.040	N.D. #
10) L2 AR-1221-3	3.958	0.000	263113	0	4.801	N.D. #
11) L3 AR-1232-1	3.958	0.000	263113	0	5.746	N.D. #
12) L3 AR-1232-2	4.502	3.894	439333	196094	19.426	6.791 #
13) L3 AR-1232-3	4.809	4.136f	1084268	13425878	26.833	882.769 #
14) L3 AR-1232-4	4.972	4.175	465513	3633302	22.685	259.296 #
15) L3 AR-1232-5	5.070	4.346	18318667	8542023	1170.701	538.294 #
16) L4 AR-1242-1	4.784	3.894	738989	196094	13.836	5.388 #
17) L4 AR-1242-2	4.809	3.894	1084268	196094	14.502	3.668 #
18) L4 AR-1242-3	4.869	4.136f	503937	13425878	10.720	466.585 #
19) L4 AR-1242-4	4.972	4.175	465513	3633302	12.052	126.202 #
20) L4 AR-1242-5	5.754	4.708	12459108	33496444	293.107	929.261 #
21) L5 AR-1248-1	4.784	3.894	738989	196094	18.472	7.229 #
22) L5 AR-1248-2	5.070	4.136	18318667	13425878	330.261	312.155
23) L5 AR-1248-3	5.283	4.175	10593218	3633302	162.828	86.706 #
24) L5 AR-1248-4	5.714	4.346	17857254	8542023	242.480	168.220 #
25) L5 AR-1248-5	5.754	4.749	12459108	4902159	172.600	99.403 #
26) L6 AR-1254-1	5.683	4.708	30423703	33496444	425.852	446.520
27) L6 AR-1254-2	5.916	4.864	50392057	29959769	447.346	455.760
28) L6 AR-1254-3	6.309	5.275	52480296	44840063	446.996	434.892
29) L6 AR-1254-4	6.619	5.519	38838895	26791733	427.927	406.998
30) L6 AR-1254-5	7.069	5.955	41138797	40325552	424.353	428.501
31) L7 AR-1260-1	6.483	5.414	19379253	22251483	229.530	313.092 #
32) L7 AR-1260-2	6.762	5.617	22612227	16944424	230.238	207.805
33) L7 AR-1260-3	7.135	5.765	5217796	18597073	69.732	236.747 #
34) L7 AR-1260-4	7.383	6.267	16703170	2058379	188.094	30.597 #
35) L7 AR-1260-5	7.730	6.532	5900944	4949704	34.493	32.462
36) L8 AR-1262-1	7.135	5.955	5217796	40325552	45.643	778.728 #
37) L8 AR-1262-2	7.730	6.532	5900944	4949704	28.708	27.732
38) L8 AR-1262-3	8.047	6.892f	5348679	4554527	56.564	62.736
39) L8 AR-1262-4	8.137	6.892	28751	4554527	0.516	33.791 #
40) L8 AR-1262-5	8.765f	0.000	228475	0	2.963	N.D. #
41) L9 AR-1268-1	8.047	6.892f	5348679	4554527	21.919	21.669
42) L9 AR-1268-2	8.137	6.892	28751	4554527	0.128	23.906 #

Data Path : Z:\pestpcbsrv\HPCHEM1\ECD_R\Data\PR030222\
 Data File : PR053741.D
 Signal(s) : Signal #1: ECD1A.ch Signal #2: ECD2B.ch
 Acq On : 02 Mar 2022 09:43
 Operator : AJ\MA
 Sample : AR1254CCC400
 Misc :
 ALS Vial : 6 Sample Multiplier: 1

Instrument :
 ECD_R
 ClientSampleId :

Integration File signal 1: autoint1.e
 Integration File signal 2: autoint2.e
 Quant Time: Mar 03 03:32:17 2022
 Quant Method : Z:\pestpcbsrv\HPCHEM1\ECD_R\Method\PR021522CLP.M
 Quant Title : GC EXTRACTABLES
 QLast Update : Wed Feb 16 05:21:54 2022
 Response via : Initial Calibration
 Integrator: ChemStation

Volume Inj. : 1 µl
 Signal #1 Phase : ZB MR1 Signal #2 Phase: ZB MR2
 Signal #1 Info : 30Mx0.32mmx 0.5µm Signal #2 Info : 30M x 0.32mm x 0.25µm

	Compound	RT#1	RT#2	Resp#1	Resp#2	ng/ml	ng/ml
44)	L9 AR-1268-4	8.765f	0.000	228475	0	2.747	N.D. #
45)	L9 AR-1268-5	9.086	0.000	320340	0	0.516	N.D. #

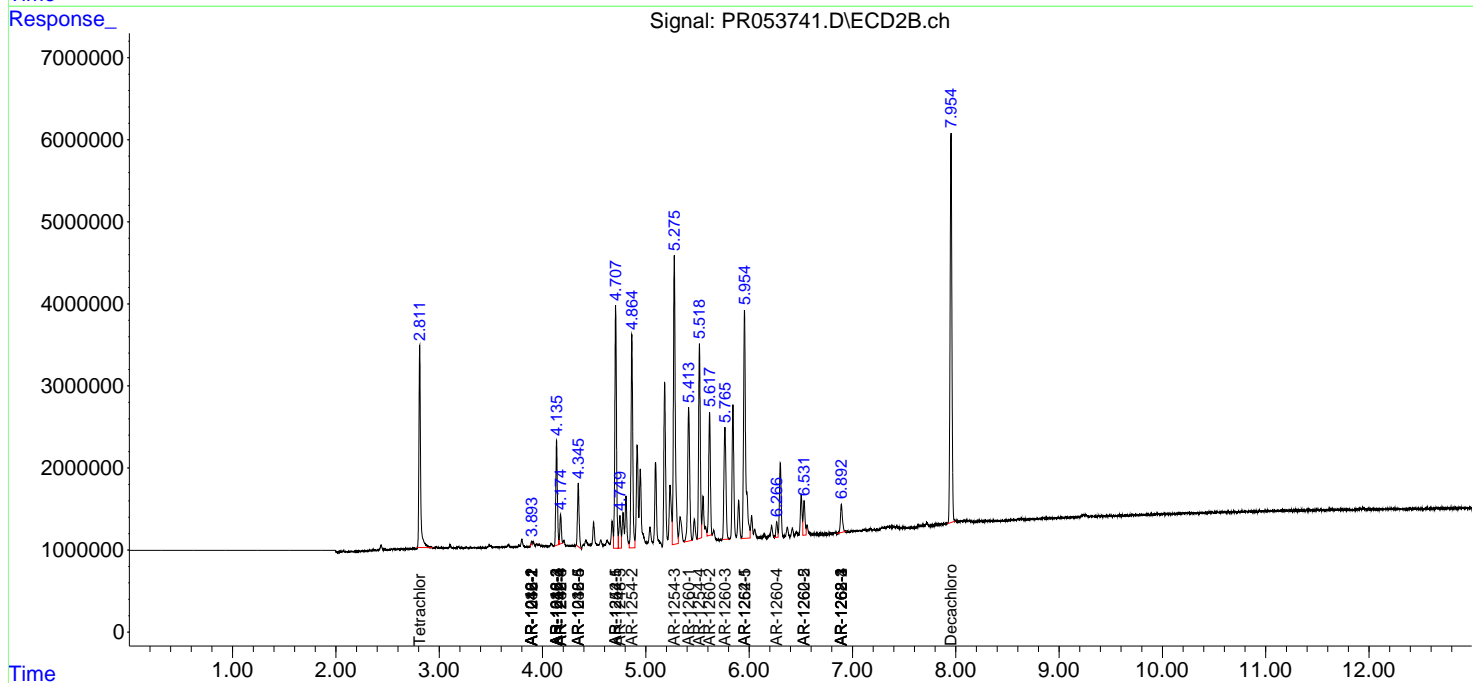
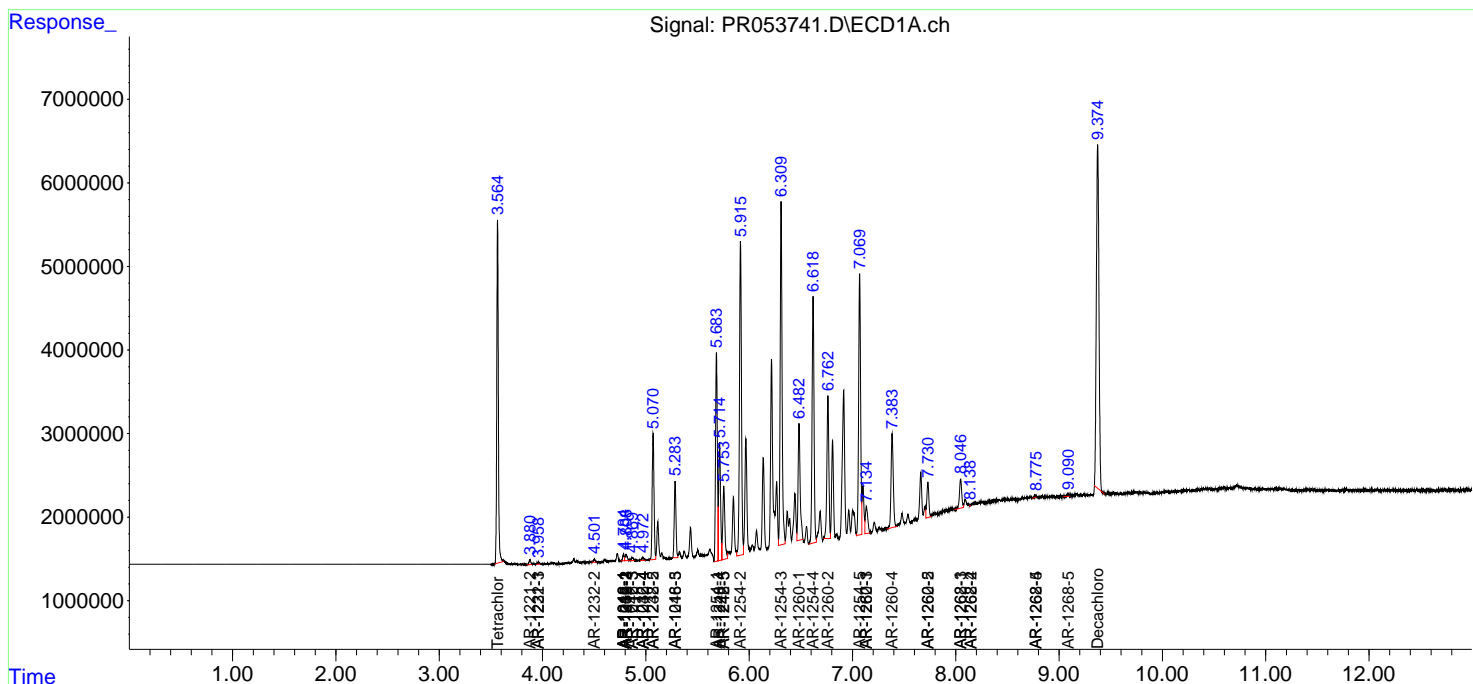
(f)=RT Delta > 1/2 Window (#)=Amounts differ by > 25% (m)=manual int.

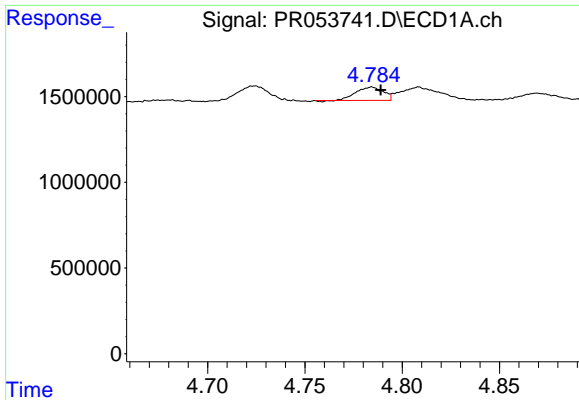
Data Path : Z:\pestpcbsrv\HPCHEM1\ECD_R\Data\PR030222\
 Data File : PR053741.D
 Signal(s) : Signal #1: ECD1A.ch Signal #2: ECD2B.ch
 Acq On : 02 Mar 2022 09:43
 Operator : AJ\MA
 Sample : AR1254CCC400
 Misc :
 ALS Vial : 6 Sample Multiplier: 1

Instrument :
 ECD_R
 ClientSampleId :

Integration File signal 1: autoint1.e
 Integration File signal 2: autoint2.e
 Quant Time: Mar 03 03:32:17 2022
 Quant Method : Z:\pestpcbsrv\HPCHEM1\ECD_R\Method\PR021522CLP.M
 Quant Title : GC EXTRACTABLES
 QLast Update : Wed Feb 16 05:21:54 2022
 Response via : Initial Calibration
 Integrator: ChemStation

Volume Inj. : 1 µl
 Signal #1 Phase : ZB MR1 Signal #2 Phase: ZB MR2
 Signal #1 Info : 30Mx0.32mmx 0.5µm Signal #2 Info : 30M x 0.32mm x 0.25µm

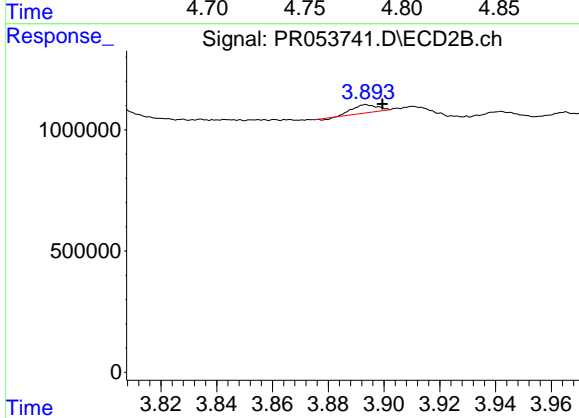




#3 AR-1016-1

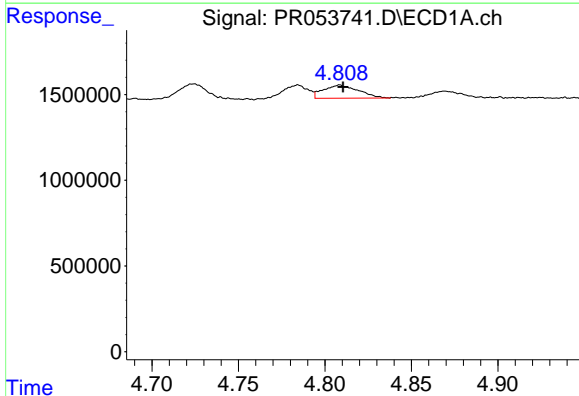
R.T.: 4.784 min
 Delta R.T.: -0.005 min
 Response: 738989
 Conc: 11.50 ng/ml

Instrument :
 ECD_R
 ClientSampleId :



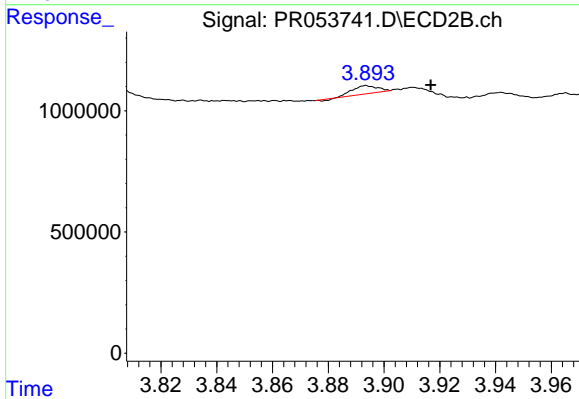
#3 AR-1016-1

R.T.: 3.894 min
 Delta R.T.: -0.006 min
 Response: 196094
 Conc: 4.36 ng/ml



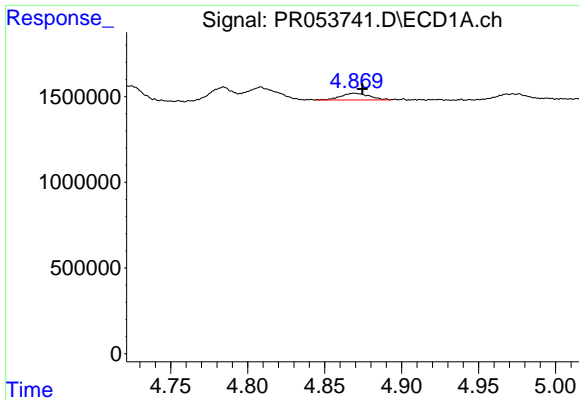
#4 AR-1016-2

R.T.: 4.809 min
 Delta R.T.: -0.002 min
 Response: 1084268
 Conc: 11.90 ng/ml



#4 AR-1016-2

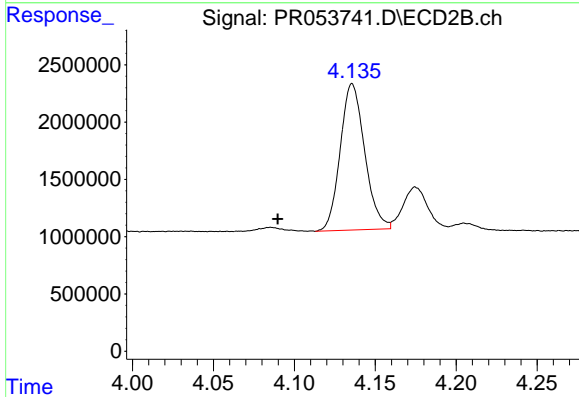
R.T.: 3.894 min
 Delta R.T.: -0.023 min
 Response: 196094
 Conc: 2.96 ng/ml



#5 AR-1016-3

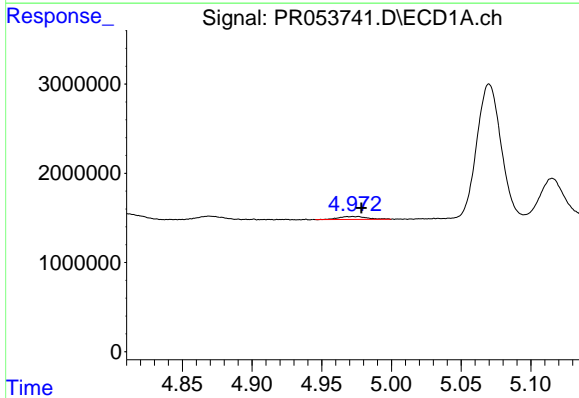
R.T.: 4.869 min
 Delta R.T.: -0.005 min
 Response: 503937
 Conc: 8.93 ng/ml

Instrument :
 ECD_R
 ClientSampleId :



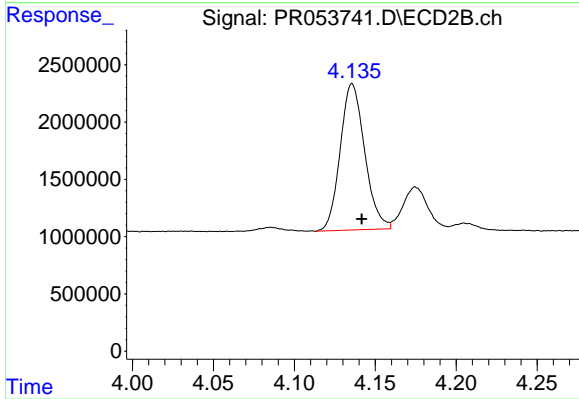
#5 AR-1016-3

R.T.: 4.136 min
 Delta R.T.: 0.046 min
 Response: 13425878
 Conc: 378.50 ng/ml



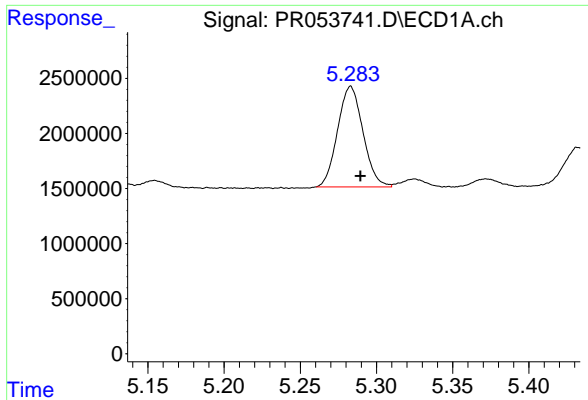
#6 AR-1016-4

R.T.: 4.972 min
 Delta R.T.: -0.006 min
 Response: 465513
 Conc: 10.07 ng/ml



#6 AR-1016-4

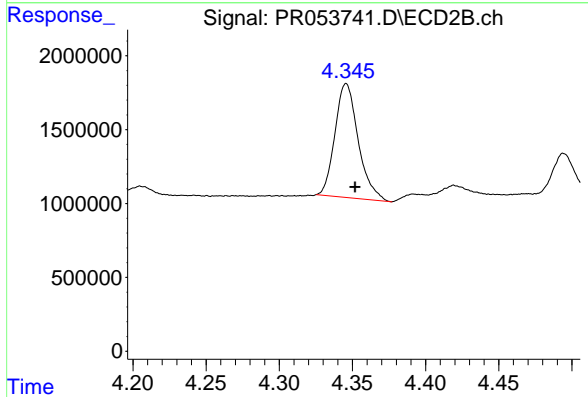
R.T.: 4.136 min
 Delta R.T.: -0.006 min
 Response: 13425878
 Conc: 425.82 ng/ml



#7 AR-1016-5

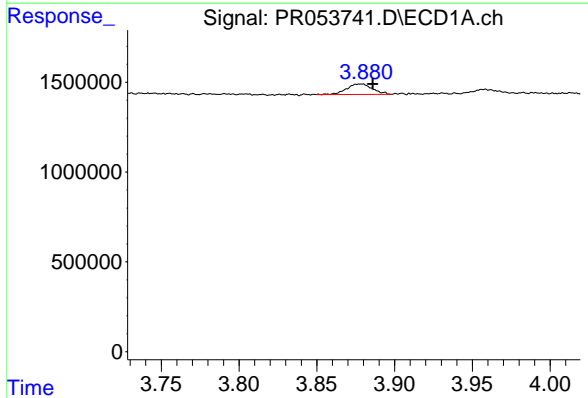
R.T.: 5.283 min
 Delta R.T.: -0.006 min
 Response: 10593218
 Conc: 223.86 ng/ml

Instrument :
 ECD_R
 ClientSampleId :



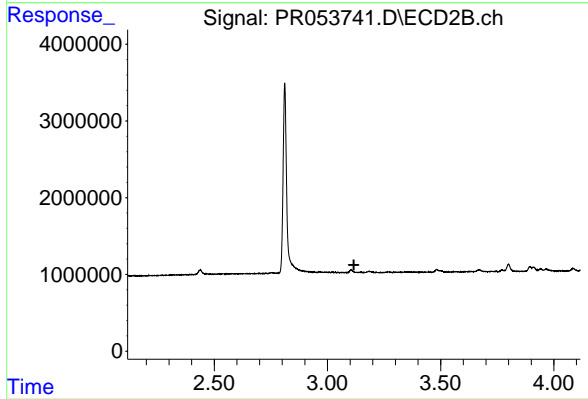
#7 AR-1016-5

R.T.: 4.346 min
 Delta R.T.: -0.006 min
 Response: 8542023
 Conc: 226.41 ng/ml



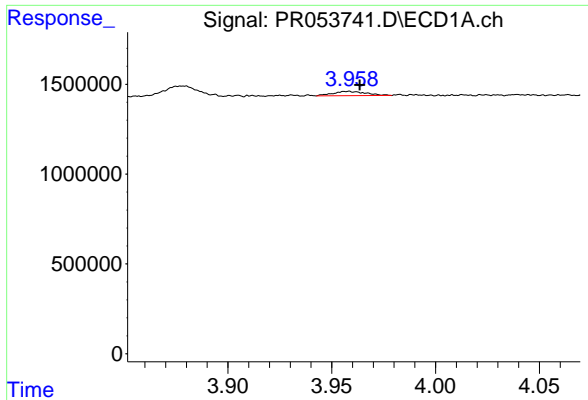
#9 AR-1221-2

R.T.: 3.879 min
 Delta R.T.: -0.007 min
 Response: 675359
 Conc: 40.04 ng/ml



#9 AR-1221-2

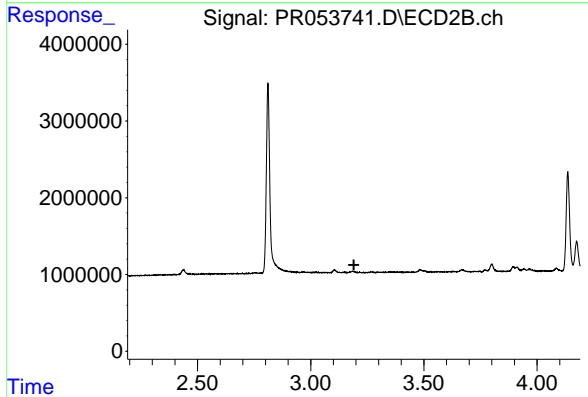
R.T.: 0.000 min
 Exp R.T. : 3.117 min
 Response: 0
 Conc: N.D.



#10 AR-1221-3

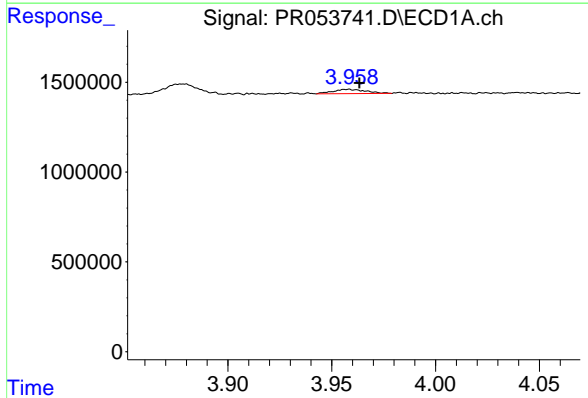
R.T.: 3.958 min
 Delta R.T.: -0.005 min
 Response: 263113
 Conc: 4.80 ng/ml

Instrument :
 ECD_R
 ClientSampleId :



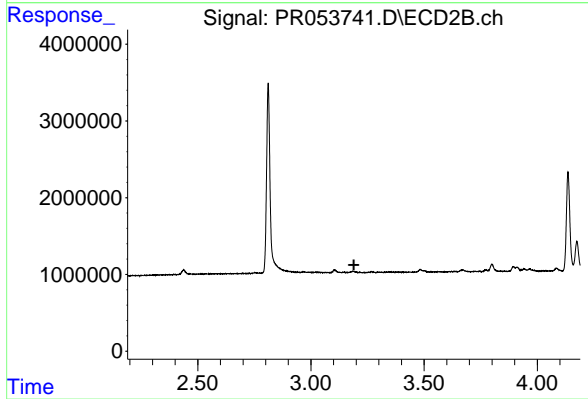
#10 AR-1221-3

R.T.: 0.000 min
 Exp R.T. : 3.191 min
 Response: 0
 Conc: N.D.



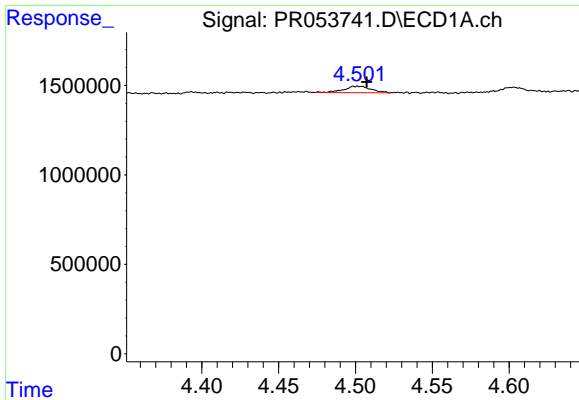
#11 AR-1232-1

R.T.: 3.958 min
 Delta R.T.: -0.005 min
 Response: 263113
 Conc: 5.75 ng/ml



#11 AR-1232-1

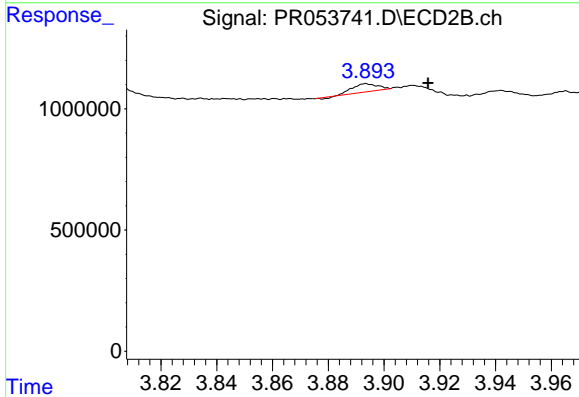
R.T.: 0.000 min
 Exp R.T. : 3.190 min
 Response: 0
 Conc: N.D.



#12 AR-1232-2

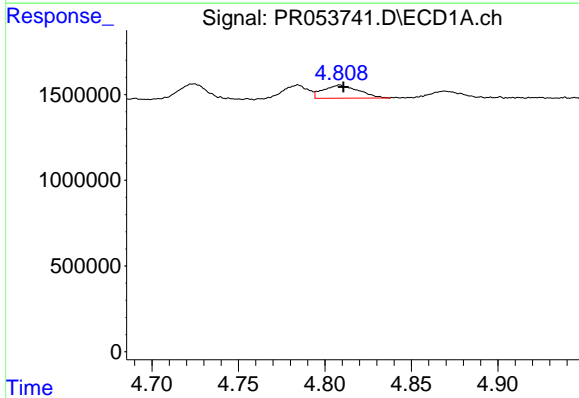
R.T.: 4.502 min
 Delta R.T.: -0.006 min
 Response: 439333
 Conc: 19.43 ng/ml

Instrument :
 ECD_R
 ClientSampleId :



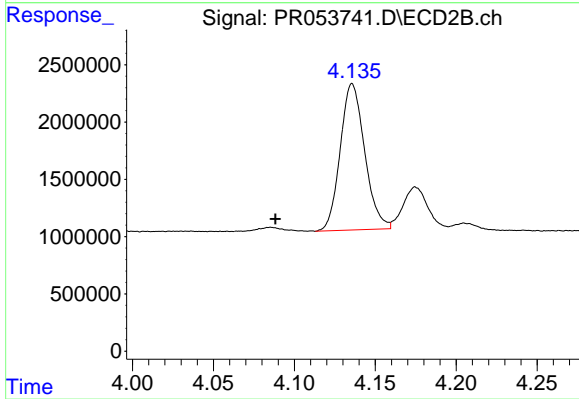
#12 AR-1232-2

R.T.: 3.894 min
 Delta R.T.: -0.022 min
 Response: 196094
 Conc: 6.79 ng/ml



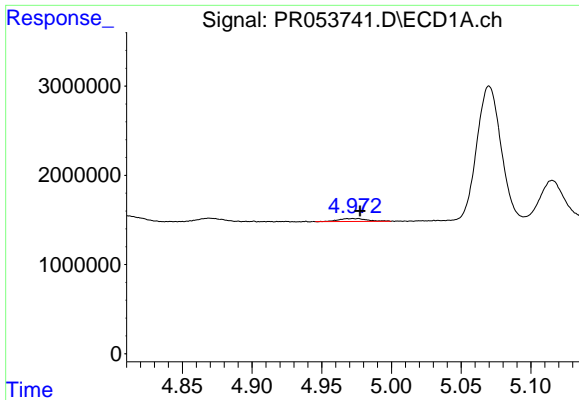
#13 AR-1232-3

R.T.: 4.809 min
 Delta R.T.: -0.002 min
 Response: 1084268
 Conc: 26.83 ng/ml



#13 AR-1232-3

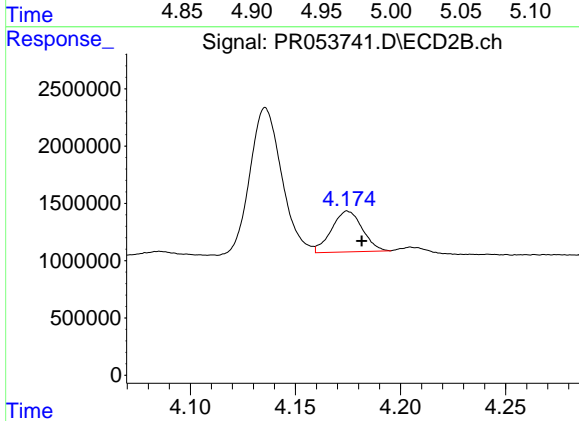
R.T.: 4.136 min
 Delta R.T.: 0.047 min
 Response: 13425878
 Conc: 882.77 ng/ml



#14 AR-1232-4

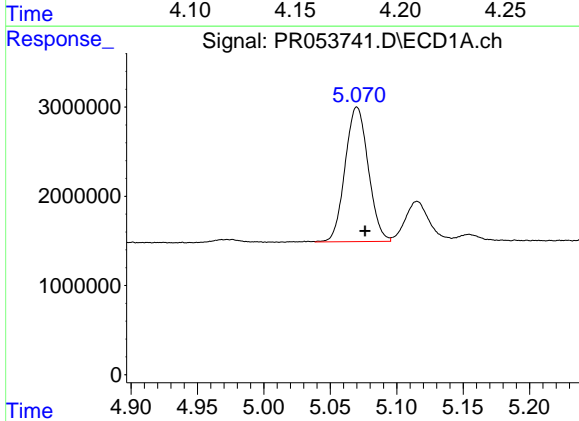
R.T.: 4.972 min
 Delta R.T.: -0.005 min
 Response: 465513
 Conc: 22.68 ng/ml

Instrument :
 ECD_R
 ClientSampleId :



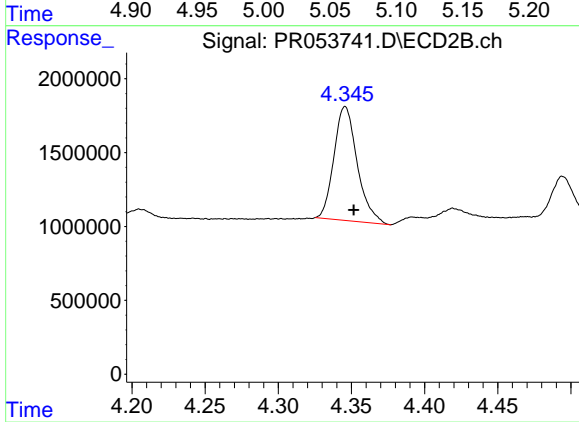
#14 AR-1232-4

R.T.: 4.175 min
 Delta R.T.: -0.007 min
 Response: 3633302
 Conc: 259.30 ng/ml



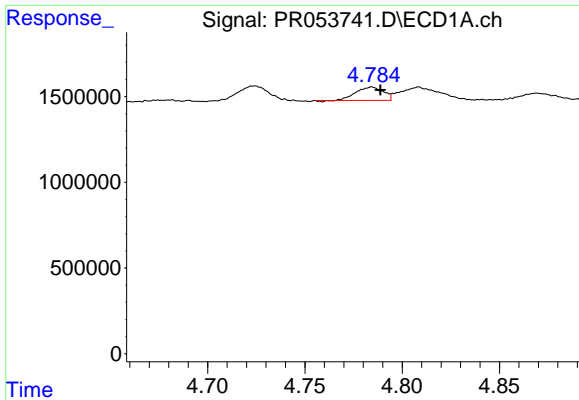
#15 AR-1232-5

R.T.: 5.070 min
 Delta R.T.: -0.006 min
 Response: 18318667
 Conc: 1170.70 ng/ml



#15 AR-1232-5

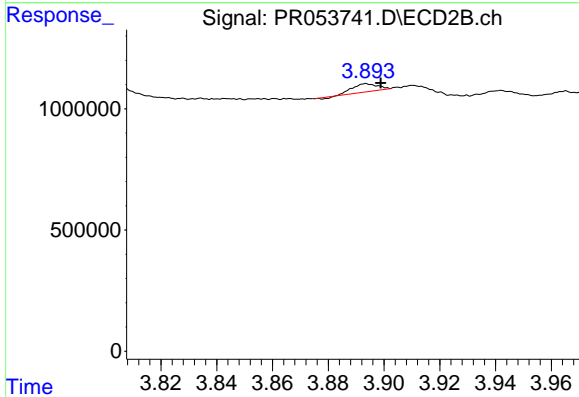
R.T.: 4.346 min
 Delta R.T.: -0.006 min
 Response: 8542023
 Conc: 538.29 ng/ml



#16 AR-1242-1

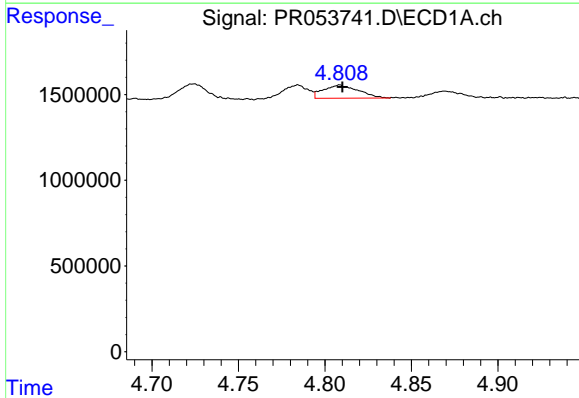
R.T.: 4.784 min
 Delta R.T.: -0.004 min
 Response: 738989
 Conc: 13.84 ng/ml

Instrument :
 ECD_R
 ClientSampleId :



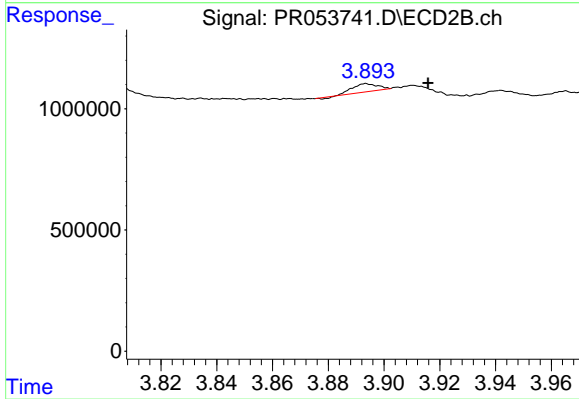
#16 AR-1242-1

R.T.: 3.894 min
 Delta R.T.: -0.005 min
 Response: 196094
 Conc: 5.39 ng/ml



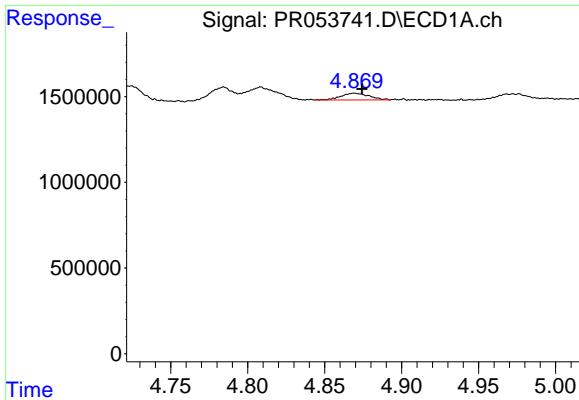
#17 AR-1242-2

R.T.: 4.809 min
 Delta R.T.: -0.002 min
 Response: 1084268
 Conc: 14.50 ng/ml



#17 AR-1242-2

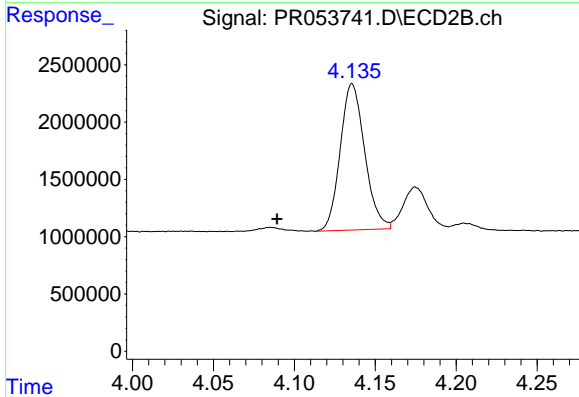
R.T.: 3.894 min
 Delta R.T.: -0.022 min
 Response: 196094
 Conc: 3.67 ng/ml



#18 AR-1242-3

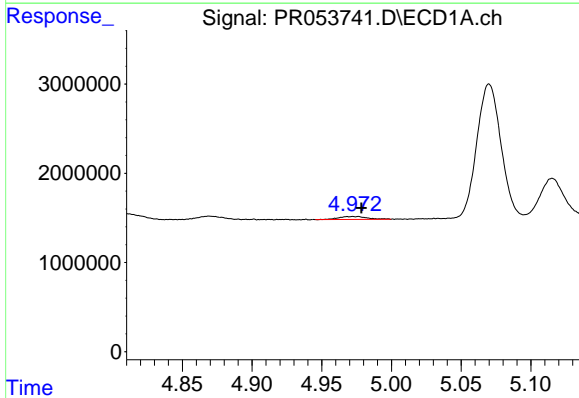
R.T.: 4.869 min
 Delta R.T.: -0.005 min
 Response: 503937
 Conc: 10.72 ng/ml

Instrument :
 ECD_R
 ClientSampleId :



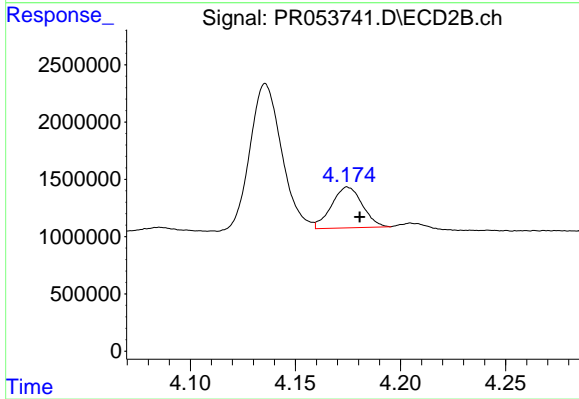
#18 AR-1242-3

R.T.: 4.136 min
 Delta R.T.: 0.046 min
 Response: 13425878
 Conc: 466.59 ng/ml



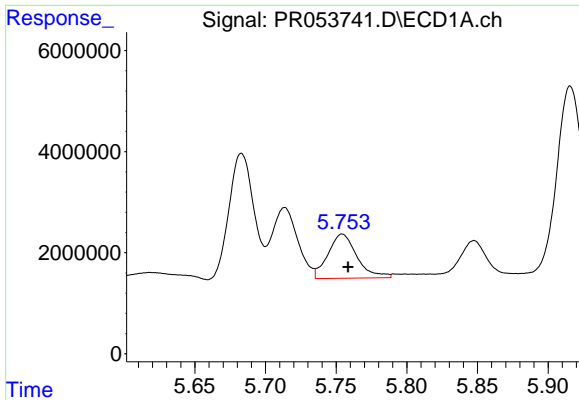
#19 AR-1242-4

R.T.: 4.972 min
 Delta R.T.: -0.006 min
 Response: 465513
 Conc: 12.05 ng/ml



#19 AR-1242-4

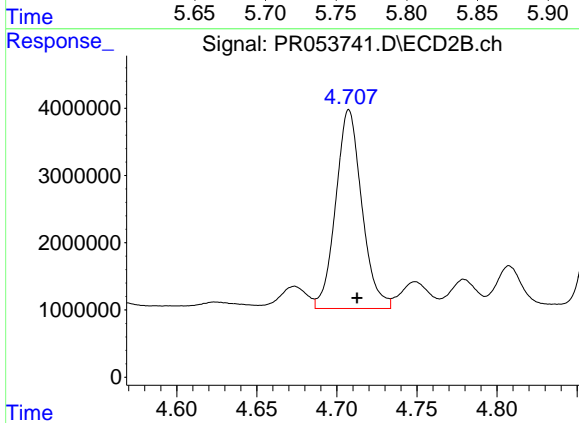
R.T.: 4.175 min
 Delta R.T.: -0.006 min
 Response: 3633302
 Conc: 126.20 ng/ml



#20 AR-1242-5

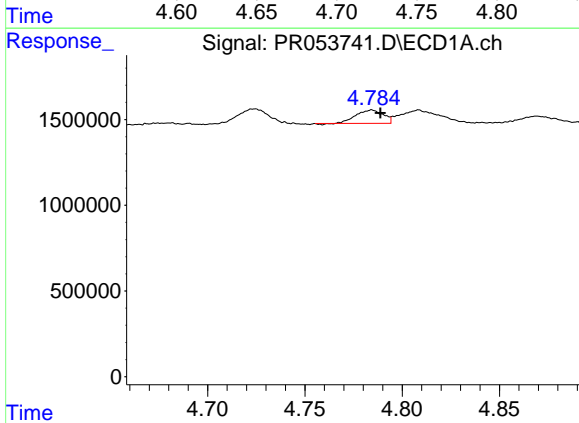
R.T.: 5.754 min
 Delta R.T.: -0.004 min
 Response: 12459108
 Conc: 293.11 ng/ml

Instrument :
 ECD_R
 ClientSampleId :



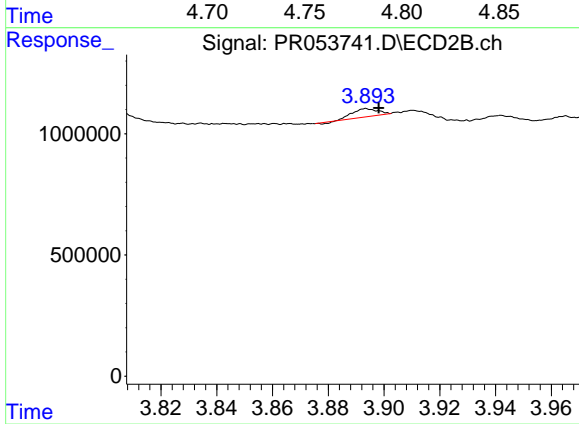
#20 AR-1242-5

R.T.: 4.708 min
 Delta R.T.: -0.005 min
 Response: 33496444
 Conc: 929.26 ng/ml



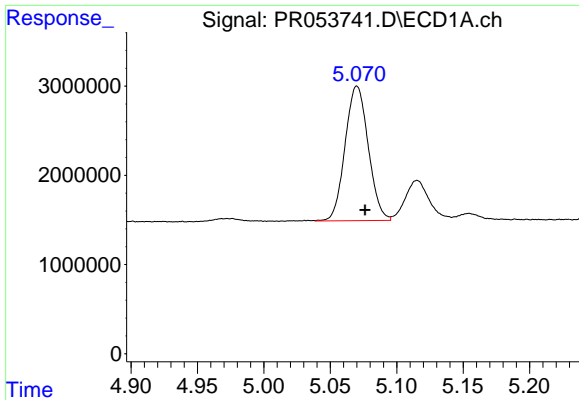
#21 AR-1248-1

R.T.: 4.784 min
 Delta R.T.: -0.004 min
 Response: 738989
 Conc: 18.47 ng/ml



#21 AR-1248-1

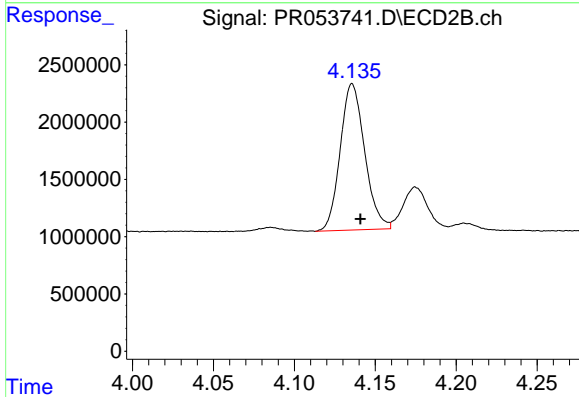
R.T.: 3.894 min
 Delta R.T.: -0.004 min
 Response: 196094
 Conc: 7.23 ng/ml



#22 AR-1248-2

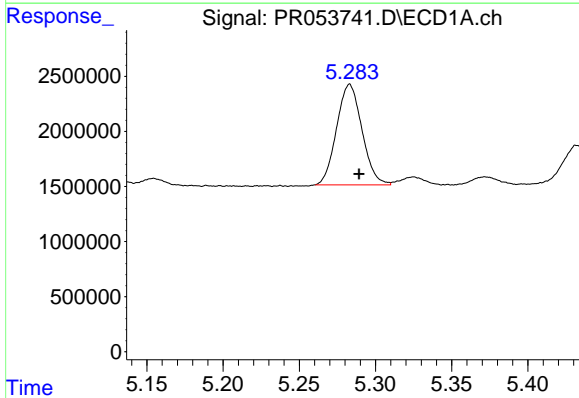
R.T.: 5.070 min
 Delta R.T.: -0.006 min
 Response: 18318667
 Conc: 330.26 ng/ml

Instrument :
 ECD_R
 ClientSampleId :



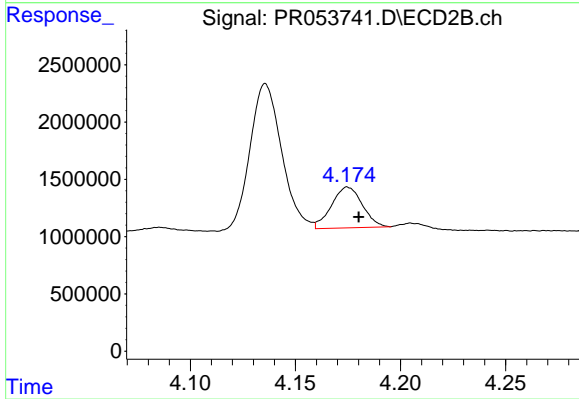
#22 AR-1248-2

R.T.: 4.136 min
 Delta R.T.: -0.005 min
 Response: 13425878
 Conc: 312.15 ng/ml



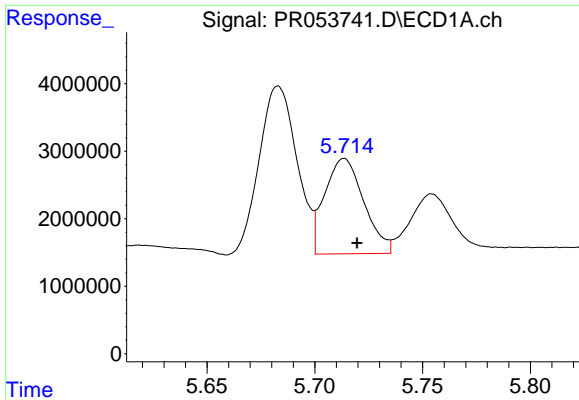
#23 AR-1248-3

R.T.: 5.283 min
 Delta R.T.: -0.006 min
 Response: 10593218
 Conc: 162.83 ng/ml



#23 AR-1248-3

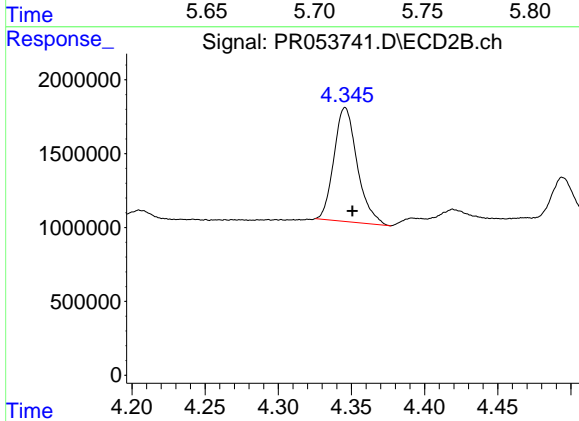
R.T.: 4.175 min
 Delta R.T.: -0.005 min
 Response: 3633302
 Conc: 86.71 ng/ml



#24 AR-1248-4

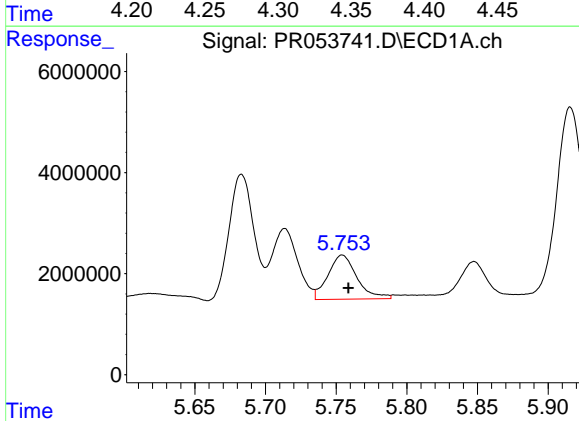
R.T.: 5.714 min
 Delta R.T.: -0.006 min
 Response: 17857254
 Conc: 242.48 ng/ml

Instrument :
 ECD_R
 ClientSampleId :



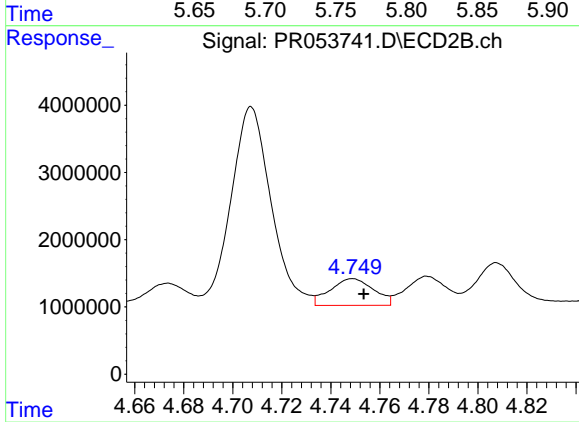
#24 AR-1248-4

R.T.: 4.346 min
 Delta R.T.: -0.005 min
 Response: 8542023
 Conc: 168.22 ng/ml



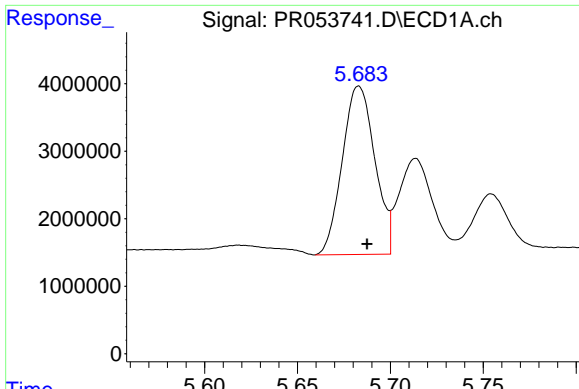
#25 AR-1248-5

R.T.: 5.754 min
 Delta R.T.: -0.004 min
 Response: 12459108
 Conc: 172.60 ng/ml



#25 AR-1248-5

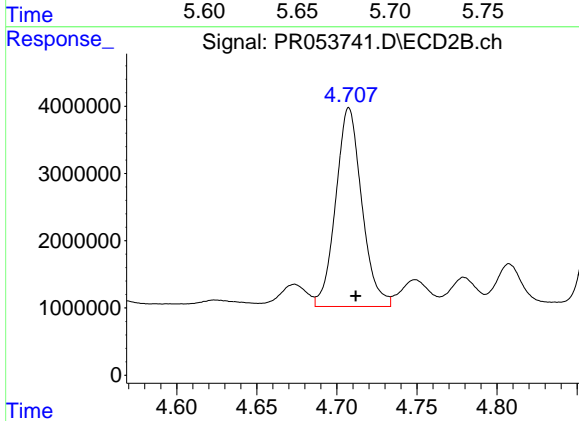
R.T.: 4.749 min
 Delta R.T.: -0.004 min
 Response: 4902159
 Conc: 99.40 ng/ml



#26 AR-1254-1

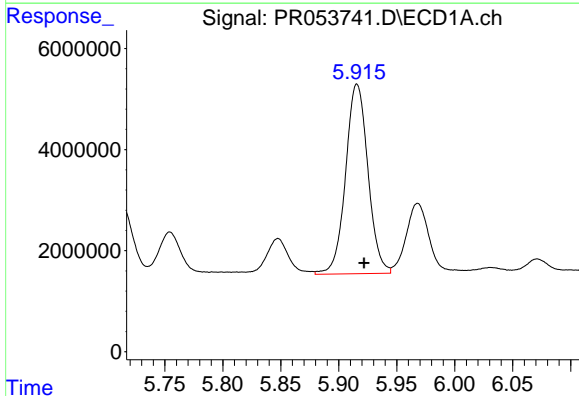
R.T.: 5.683 min
 Delta R.T.: -0.004 min
 Response: 30423703
 Conc: 425.85 ng/ml

Instrument :
 ECD_R
 ClientSampleId :



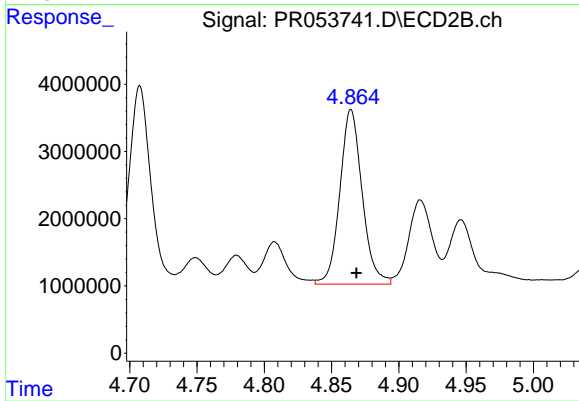
#26 AR-1254-1

R.T.: 4.708 min
 Delta R.T.: -0.004 min
 Response: 33496444
 Conc: 446.52 ng/ml



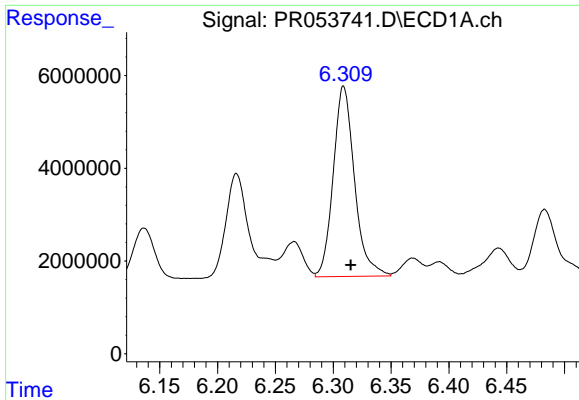
#27 AR-1254-2

R.T.: 5.916 min
 Delta R.T.: -0.006 min
 Response: 50392057
 Conc: 447.35 ng/ml



#27 AR-1254-2

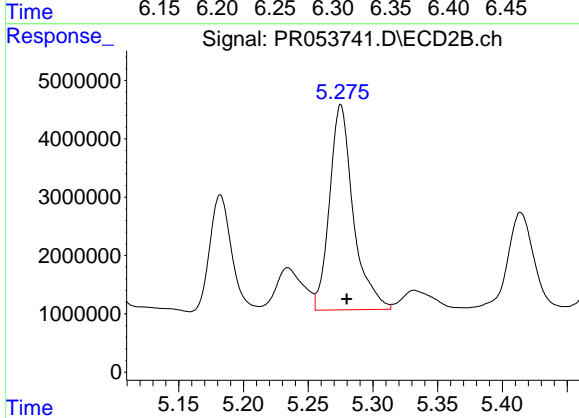
R.T.: 4.864 min
 Delta R.T.: -0.004 min
 Response: 29959769
 Conc: 455.76 ng/ml



#28 AR-1254-3

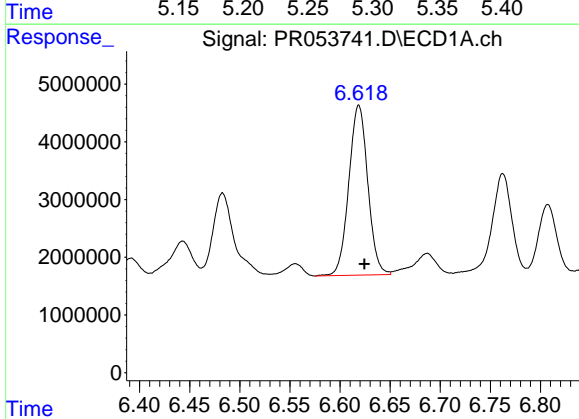
R.T.: 6.309 min
 Delta R.T.: -0.006 min
 Response: 52480296
 Conc: 447.00 ng/ml

Instrument :
 ECD_R
 ClientSampleId :



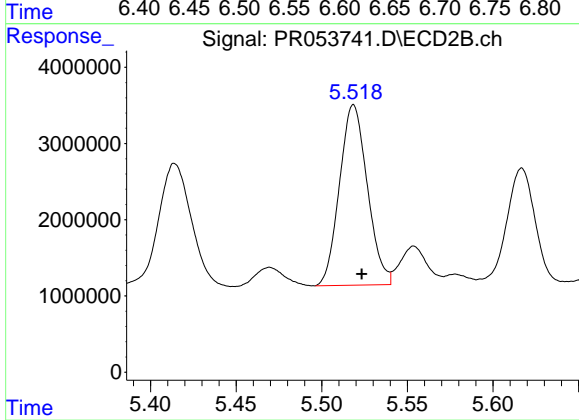
#28 AR-1254-3

R.T.: 5.275 min
 Delta R.T.: -0.005 min
 Response: 44840063
 Conc: 434.89 ng/ml



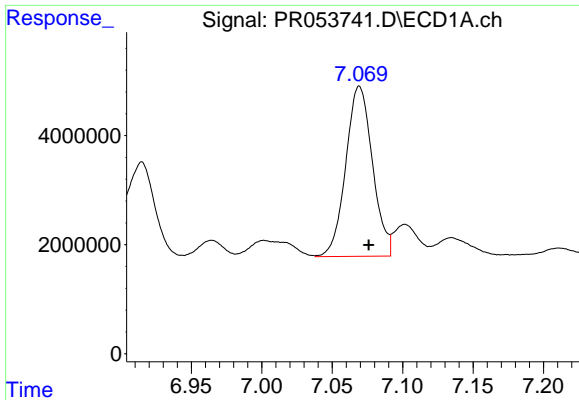
#29 AR-1254-4

R.T.: 6.619 min
 Delta R.T.: -0.005 min
 Response: 38838895
 Conc: 427.93 ng/ml



#29 AR-1254-4

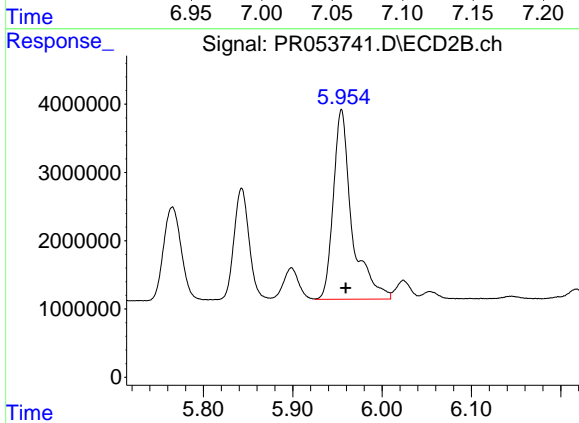
R.T.: 5.519 min
 Delta R.T.: -0.005 min
 Response: 26791733
 Conc: 407.00 ng/ml



#30 AR-1254-5

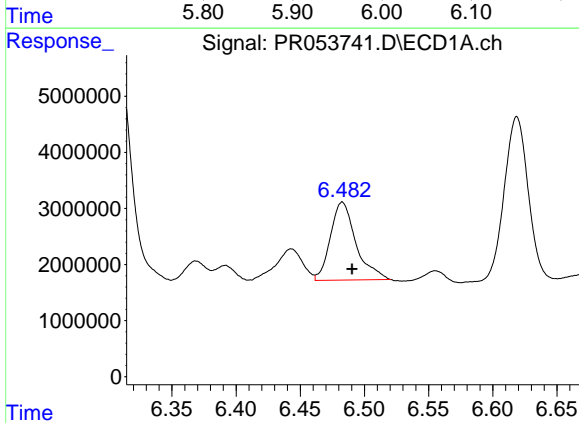
R.T.: 7.069 min
 Delta R.T.: -0.007 min
 Response: 41138797
 Conc: 424.35 ng/ml

Instrument :
 ECD_R
 ClientSampleId :



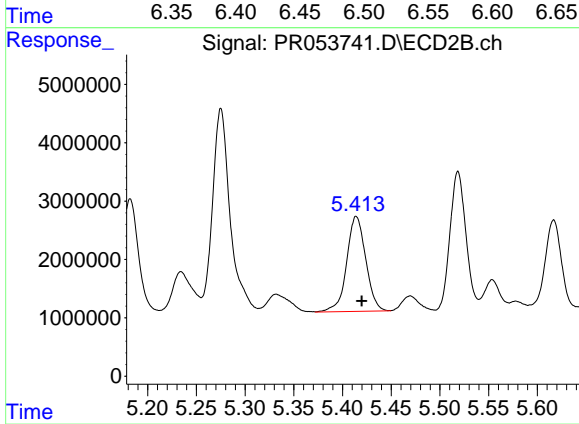
#30 AR-1254-5

R.T.: 5.955 min
 Delta R.T.: -0.005 min
 Response: 40325552
 Conc: 428.50 ng/ml



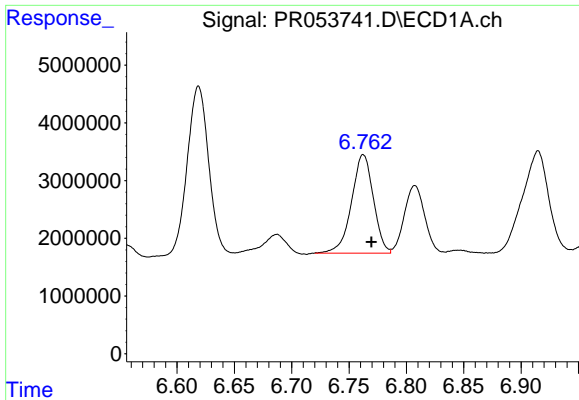
#31 AR-1260-1

R.T.: 6.483 min
 Delta R.T.: -0.008 min
 Response: 19379253
 Conc: 229.53 ng/ml



#31 AR-1260-1

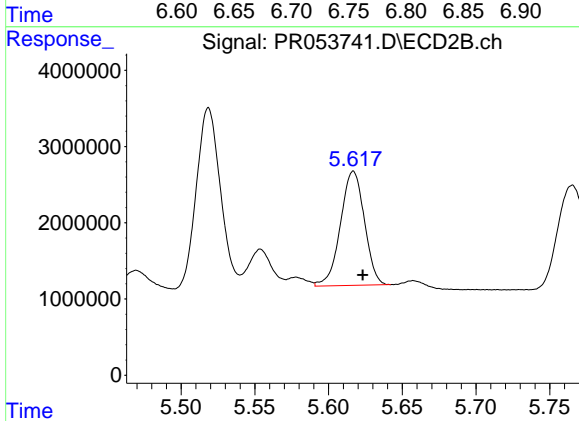
R.T.: 5.414 min
 Delta R.T.: -0.006 min
 Response: 22251483
 Conc: 313.09 ng/ml



#32 AR-1260-2

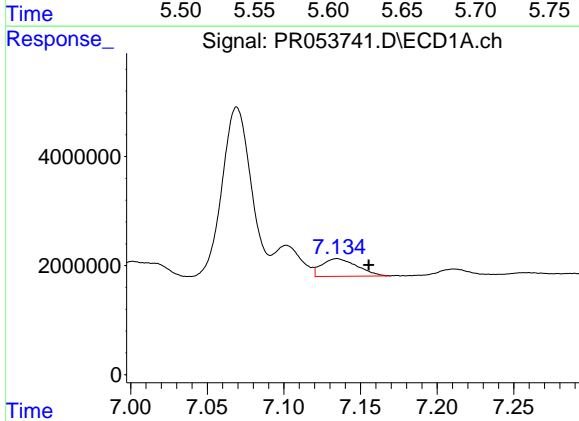
R.T.: 6.762 min
 Delta R.T.: -0.007 min
 Response: 22612227
 Conc: 230.24 ng/ml

Instrument :
 ECD_R
 ClientSampleId :



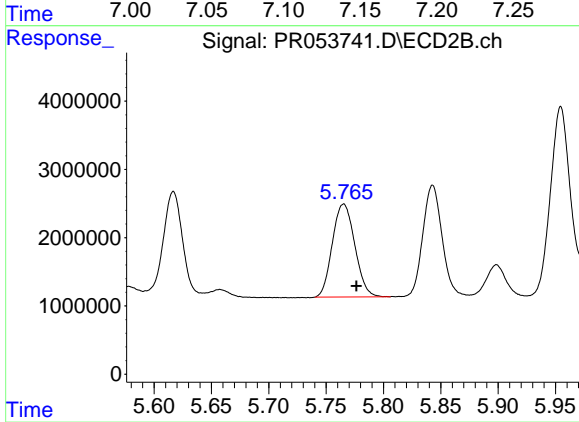
#32 AR-1260-2

R.T.: 5.617 min
 Delta R.T.: -0.006 min
 Response: 16944424
 Conc: 207.81 ng/ml



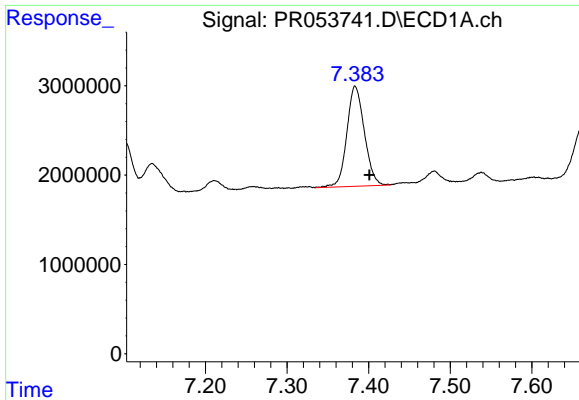
#33 AR-1260-3

R.T.: 7.135 min
 Delta R.T.: -0.021 min
 Response: 5217796
 Conc: 69.73 ng/ml



#33 AR-1260-3

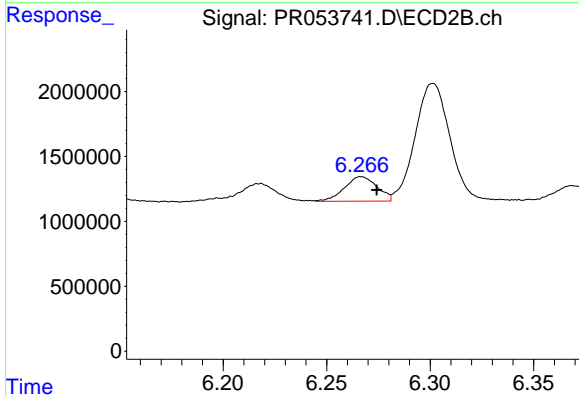
R.T.: 5.765 min
 Delta R.T.: -0.011 min
 Response: 18597073
 Conc: 236.75 ng/ml



#34 AR-1260-4

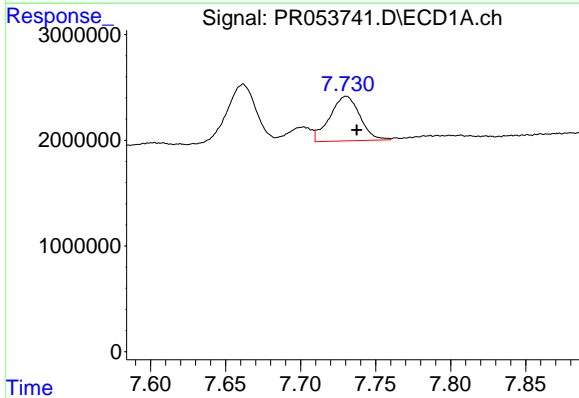
R.T.: 7.383 min
 Delta R.T.: -0.017 min
 Response: 16703170
 Conc: 188.09 ng/ml

Instrument :
 ECD_R
 ClientSampleId :



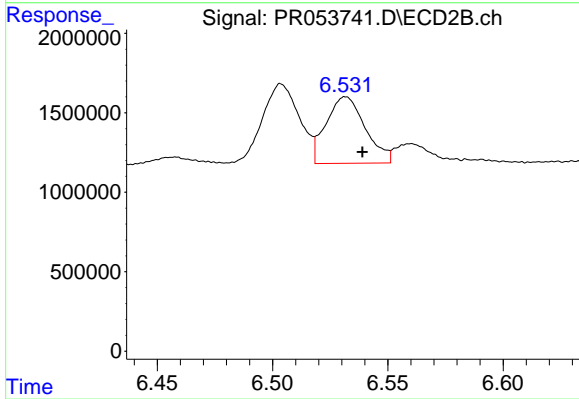
#34 AR-1260-4

R.T.: 6.267 min
 Delta R.T.: -0.007 min
 Response: 2058379
 Conc: 30.60 ng/ml



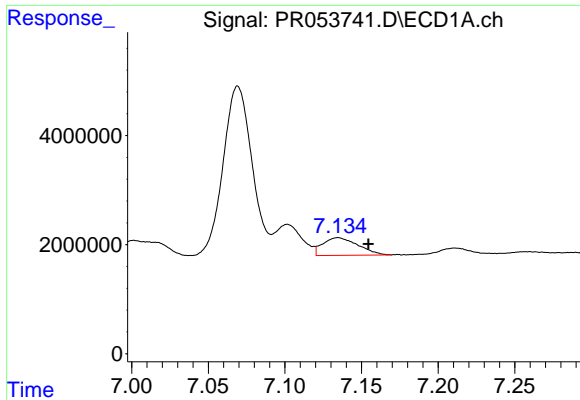
#35 AR-1260-5

R.T.: 7.730 min
 Delta R.T.: -0.007 min
 Response: 5900944
 Conc: 34.49 ng/ml



#35 AR-1260-5

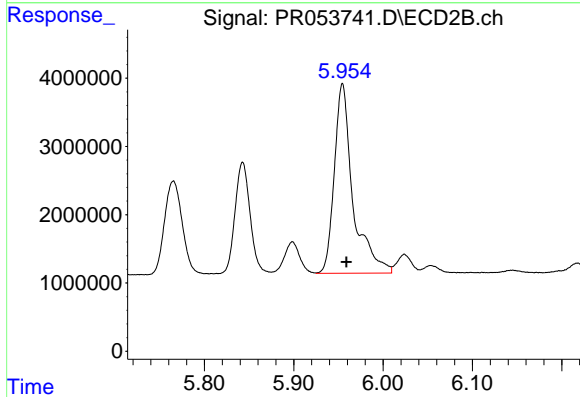
R.T.: 6.532 min
 Delta R.T.: -0.007 min
 Response: 4949704
 Conc: 32.46 ng/ml



#36 AR-1262-1

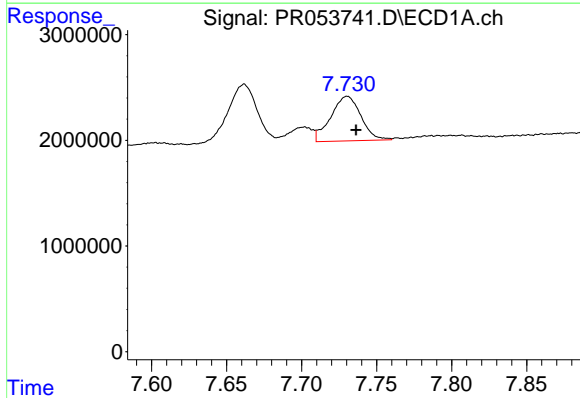
R.T.: 7.135 min
 Delta R.T.: -0.020 min
 Response: 5217796
 Conc: 45.64 ng/ml

Instrument :
 ECD_R
 ClientSampleId :



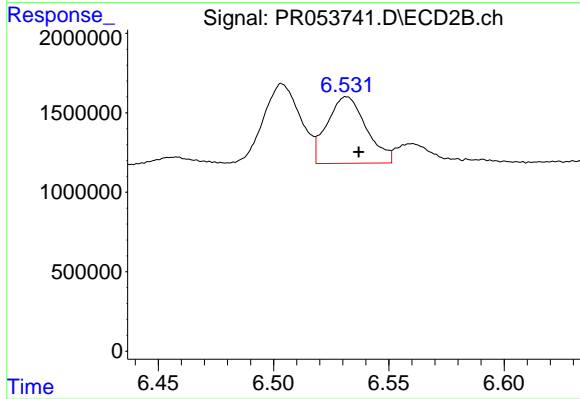
#36 AR-1262-1

R.T.: 5.955 min
 Delta R.T.: -0.004 min
 Response: 4032552
 Conc: 778.73 ng/ml



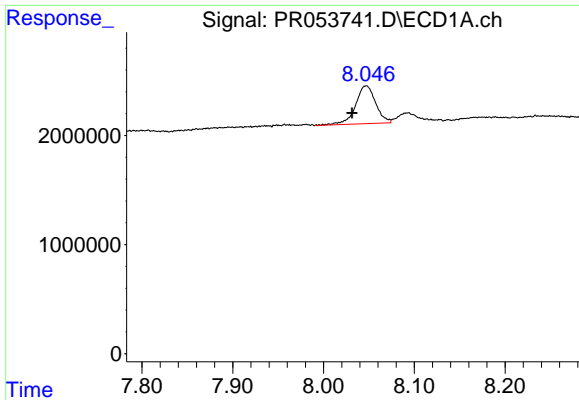
#37 AR-1262-2

R.T.: 7.730 min
 Delta R.T.: -0.006 min
 Response: 5900944
 Conc: 28.71 ng/ml



#37 AR-1262-2

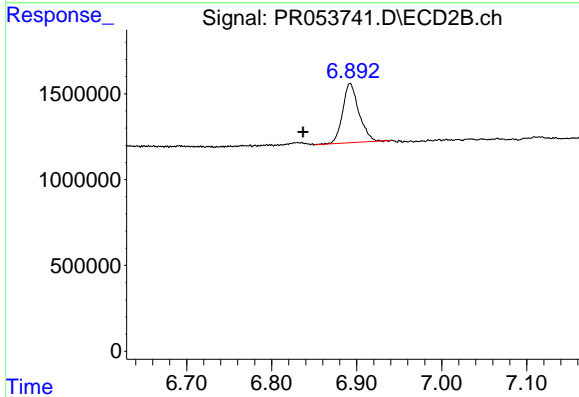
R.T.: 6.532 min
 Delta R.T.: -0.005 min
 Response: 4949704
 Conc: 27.73 ng/ml



#38 AR-1262-3

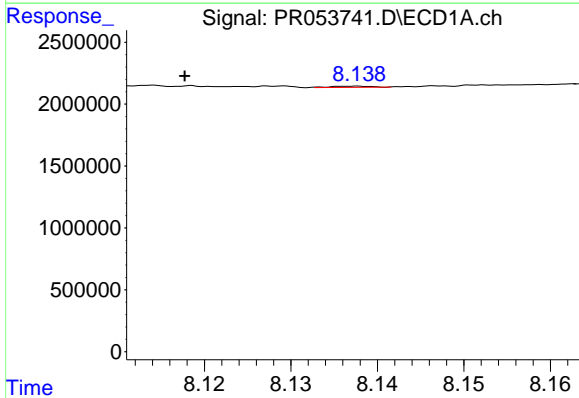
R.T.: 8.047 min
 Delta R.T.: 0.016 min
 Response: 5348679
 Conc: 56.56 ng/ml

Instrument :
 ECD_R
 ClientSampleId :



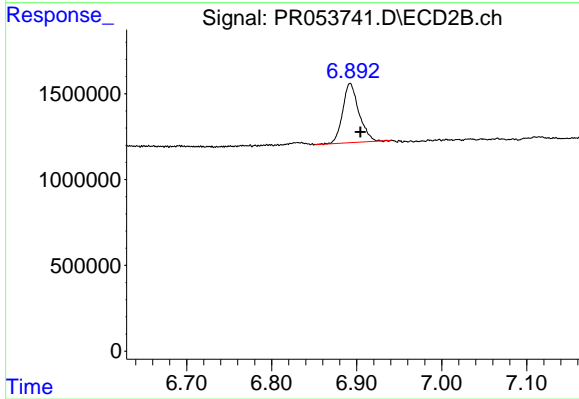
#38 AR-1262-3

R.T.: 6.892 min
 Delta R.T.: 0.055 min
 Response: 4554527
 Conc: 62.74 ng/ml



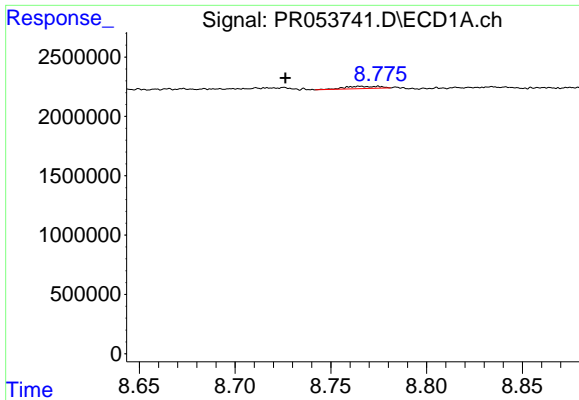
#39 AR-1262-4

R.T.: 8.137 min
 Delta R.T.: 0.020 min
 Response: 28751
 Conc: 0.52 ng/ml



#39 AR-1262-4

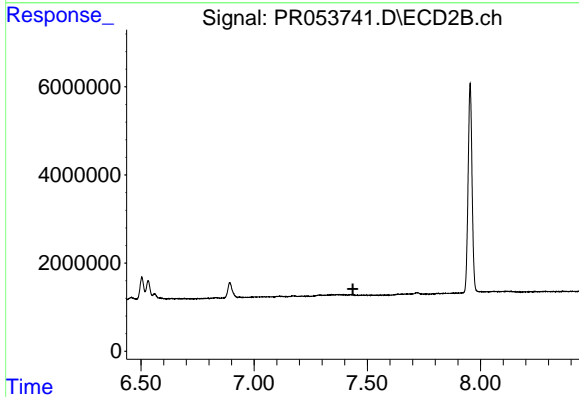
R.T.: 6.892 min
 Delta R.T.: -0.012 min
 Response: 4554527
 Conc: 33.79 ng/ml



#40 AR-1262-5

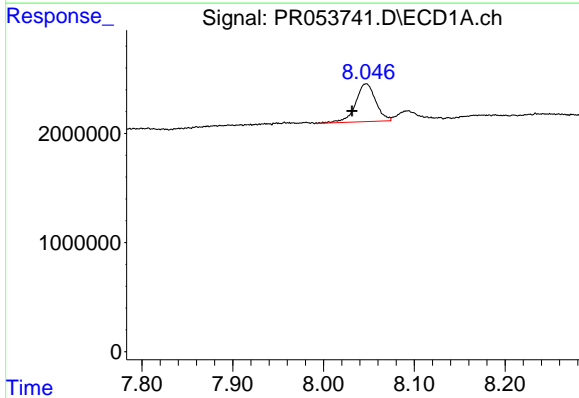
R.T.: 8.765 min
 Delta R.T.: 0.039 min
 Response: 228475
 Conc: 2.96 ng/ml

Instrument :
 ECD_R
 ClientSampleId :



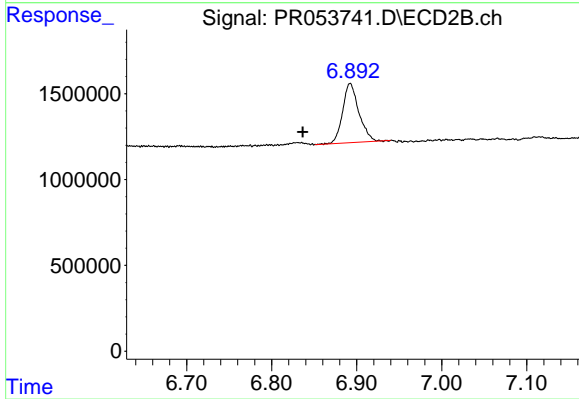
#40 AR-1262-5

R.T.: 0.000 min
 Exp R.T. : 7.436 min
 Response: 0
 Conc: N.D.



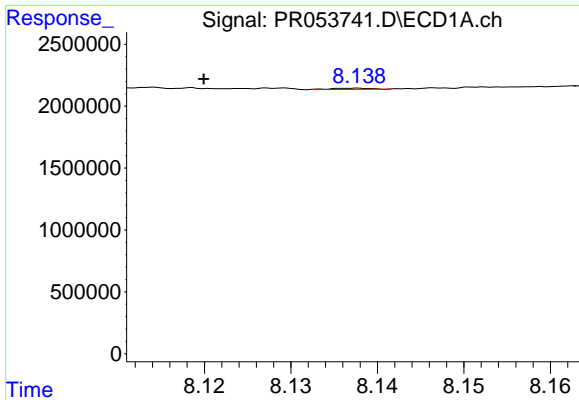
#41 AR-1268-1

R.T.: 8.047 min
 Delta R.T.: 0.016 min
 Response: 5348679
 Conc: 21.92 ng/ml



#41 AR-1268-1

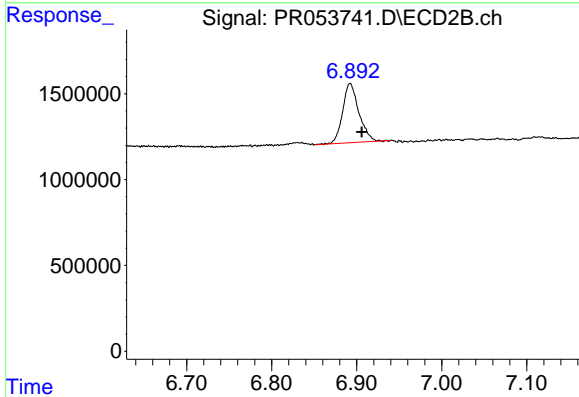
R.T.: 6.892 min
 Delta R.T.: 0.056 min
 Response: 4554527
 Conc: 21.67 ng/ml



#42 AR-1268-2

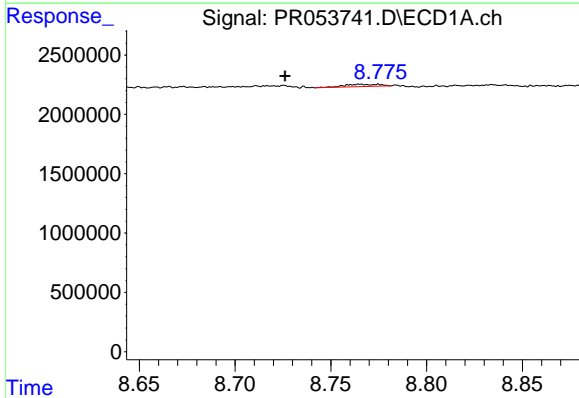
R.T.: 8.137 min
 Delta R.T.: 0.017 min
 Response: 28751
 Conc: 0.13 ng/ml

Instrument :
 ECD_R
 ClientSampleId :



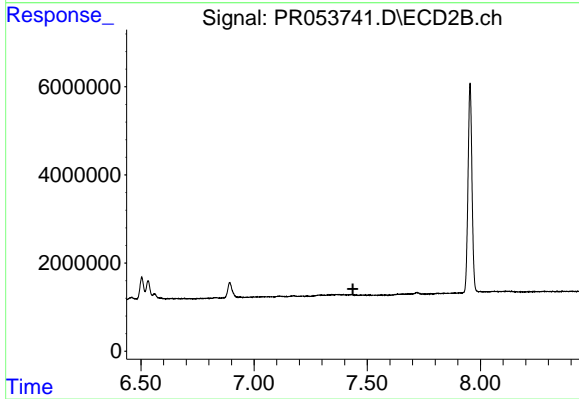
#42 AR-1268-2

R.T.: 6.892 min
 Delta R.T.: -0.014 min
 Response: 4554527
 Conc: 23.91 ng/ml



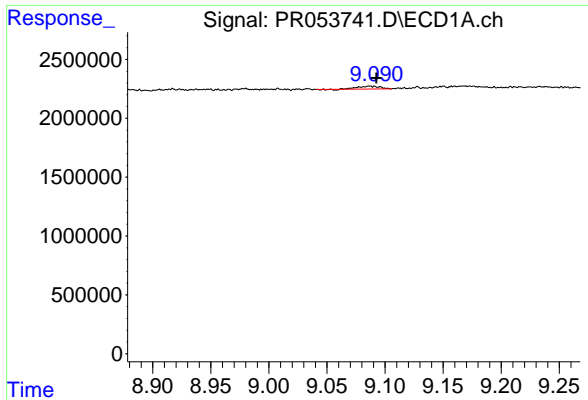
#44 AR-1268-4

R.T.: 8.765 min
 Delta R.T.: 0.039 min
 Response: 228475
 Conc: 2.75 ng/ml



#44 AR-1268-4

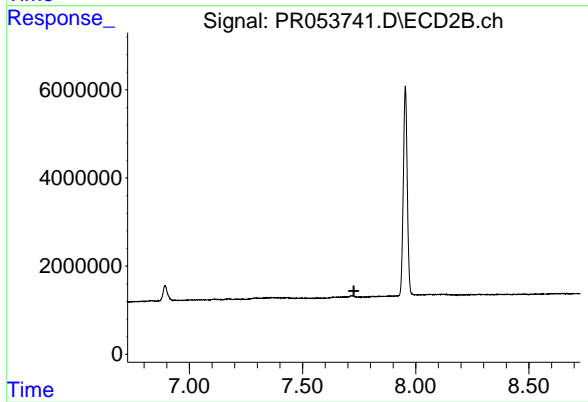
R.T.: 0.000 min
 Exp R.T. : 7.437 min
 Response: 0
 Conc: N.D.



#45 AR-1268-5

R.T.: 9.086 min
Delta R.T.: -0.006 min
Response: 320340
Conc: 0.52 ng/ml

Instrument :
ECD_R
ClientSampleId :



#45 AR-1268-5

R.T.: 0.000 min
Exp R.T. : 7.727 min
Response: 0
Conc: N.D.