

Data Path : Z:\pestpcbsrv\HPCHEM1\ECD_R\Data\PR030222\
 Data File : PR053736.D
 Signal(s) : Signal #1: ECD1A.ch Signal #2: ECD2B.ch
 Acq On : 02 Mar 2022 07:04
 Operator : AJ\MA
 Sample : N1692-22MSD
 Misc :
 ALS Vial : 26 Sample Multiplier: 1

Instrument :

ECD_R

ClientSampleId :

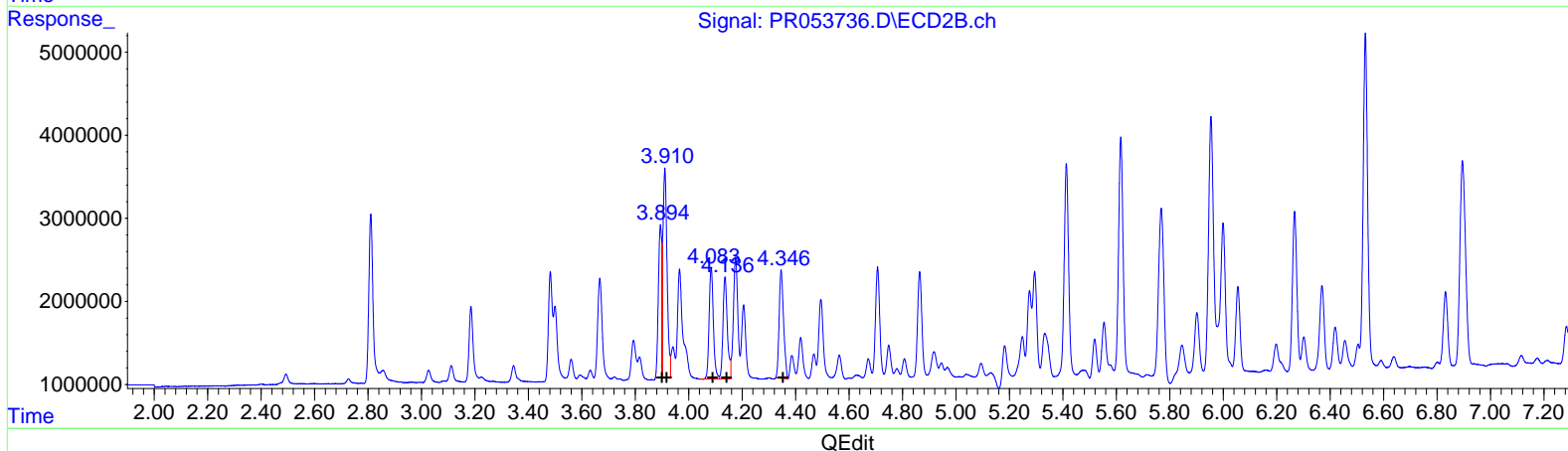
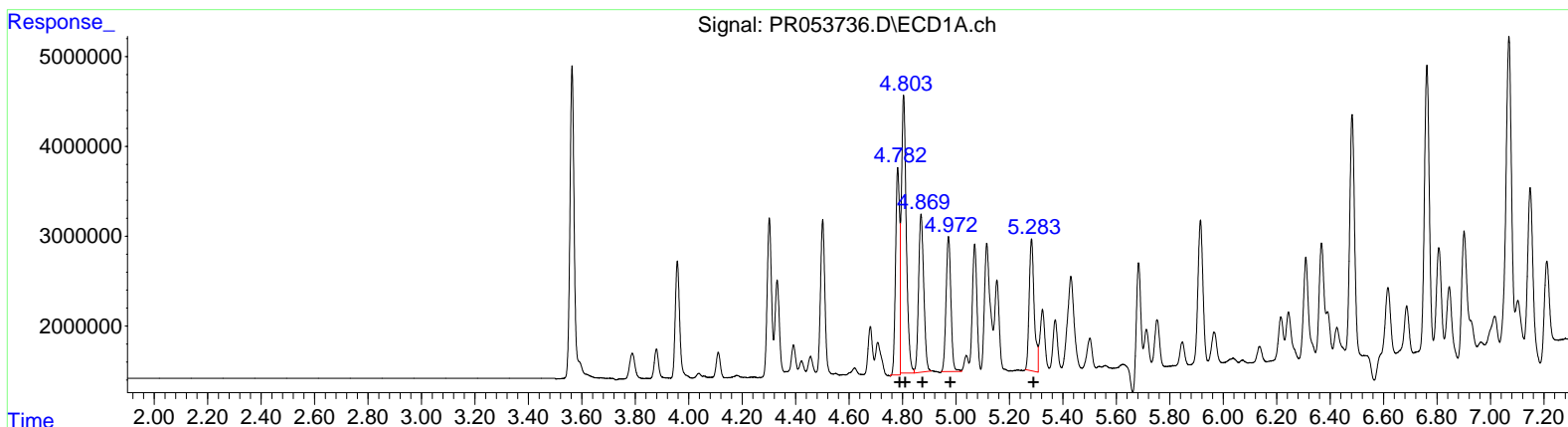
BGZM9MSD

Manual IntegrationsAPPROVED

Reviewed By :Yogesh Patel 03/04/2022
 Supervised By :Ankita Jodhani 03/04/2022

Integration File signal 1: autoint1.e
 Integration File signal 2: autoint2.e
 Quant Time: Mar 02 07:59:41 2022
 Quant Method : Z:\pestpcbsrv\HPCHEM1\ECD_R\Method\PR021522CLP.M
 Quant Title : GC EXTRACTABLES
 QLast Update : Wed Feb 16 05:21:54 2022
 Response via : Initial Calibration
 Integrator: ChemStation

Volume Inj. : 1 µl
 Signal #1 Phase : ZB MR1 Signal #2 Phase: ZB MR2
 Signal #1 Info : 30Mx0.32mmx 0.5µm Signal #2 Info : 30M x 0.32mm x 0.25µm



(3) AR-1016-1 (L1)

| R.T. | Response | Conc |
|------|----------|--------|
| 4.78 | 24392372 | 379.54 |
| 4.80 | 39829758 | 437.27 |
| 4.87 | 23565312 | 417.58 |
| 4.97 | 18912327 | 408.91 |
| 5.28 | 19089041 | 403.39 |

(3) AR-1016-1 #2 (L1)

| R.T. | Response | Conc |
|------|----------|--------|
| 3.89 | 16215985 | 360.92 |
| 3.91 | 27435317 | 414.20 |
| 4.08 | 14748895 | 415.80 |
| 4.14 | 14081139 | 446.61 |
| 4.35 | 14983370 | 397.13 |

Data Path : Z:\pestpcbsrv\HPCHEM1\ECD_R\Data\PR030222\
 Data File : PR053736.D
 Signal(s) : Signal #1: ECD1A.ch Signal #2: ECD2B.ch
 Acq On : 02 Mar 2022 07:04
 Operator : AJ\MA
 Sample : N1692-22MSD
 Misc :
 ALS Vial : 26 Sample Multiplier: 1

Instrument :

ECD_R

ClientSampleId :

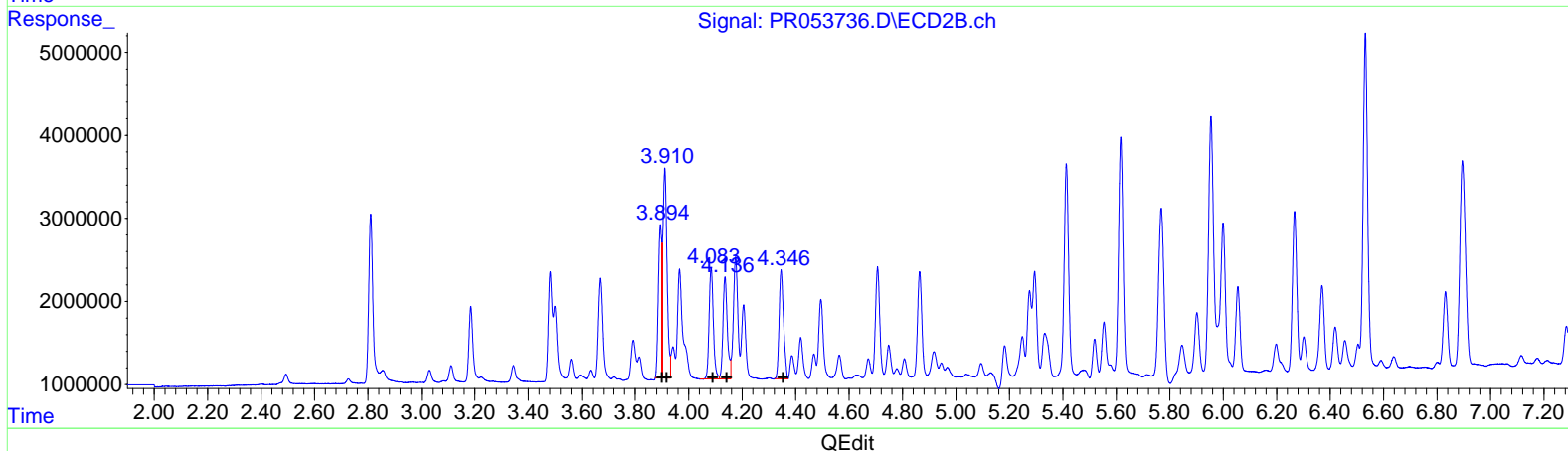
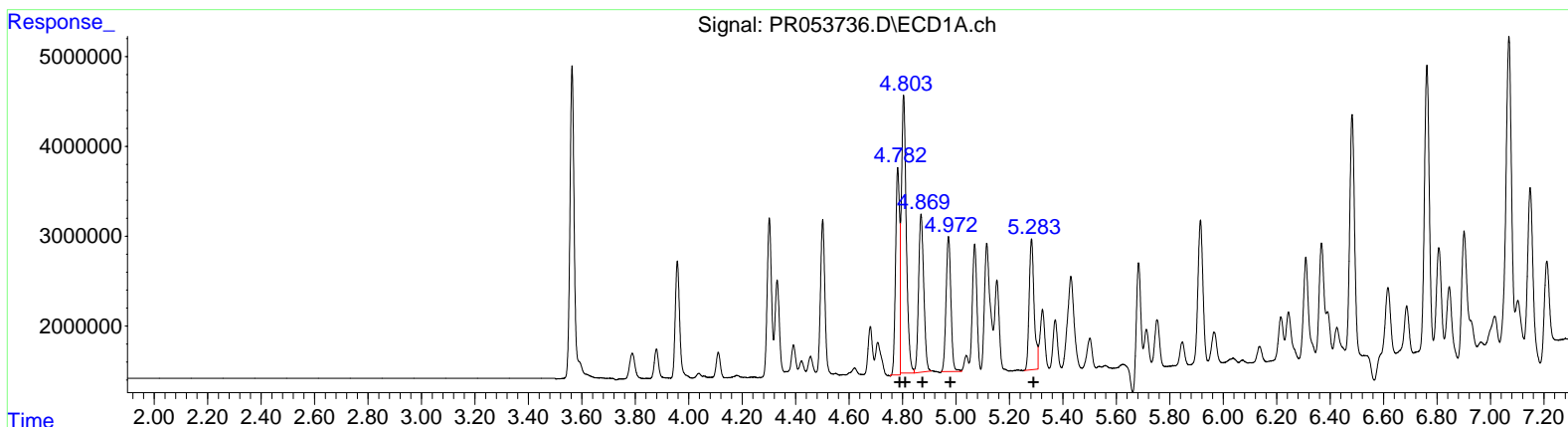
BGZM9MSD

Manual IntegrationsAPPROVED

Reviewed By :Yogesh Patel 03/04/2022
 Supervised By :Ankita Jodhani 03/04/2022

Integration File signal 1: autoint1.e
 Integration File signal 2: autoint2.e
 Quant Time: Mar 02 07:59:41 2022
 Quant Method : Z:\pestpcbsrv\HPCHEM1\ECD_R\Method\PR021522CLP.M
 Quant Title : GC EXTRACTABLES
 QLast Update : Wed Feb 16 05:21:54 2022
 Response via : Initial Calibration
 Integrator: ChemStation

Volume Inj. : 1 µl
 Signal #1 Phase : ZB MR1 Signal #2 Phase: ZB MR2
 Signal #1 Info : 30Mx0.32mmx 0.5µm Signal #2 Info : 30M x 0.32mm x 0.25µm



(3) AR-1016-1 #2 (L1)

| R.T. | Response | Conc |
|------|----------|--------|
| 4.78 | 24392372 | 379.54 |
| 4.80 | 39829758 | 437.27 |
| 4.87 | 23565312 | 417.58 |
| 4.97 | 18912327 | 408.91 |
| 5.28 | 18709092 | 395.36 |

(3) AR-1016-1 #2 (L1)

| R.T. | Response | Conc |
|------|----------|--------|
| 3.89 | 16215985 | 360.92 |
| 3.91 | 27435317 | 414.20 |
| 4.08 | 14748895 | 415.80 |
| 4.14 | 14081139 | 446.61 |
| 4.35 | 15160138 | 401.82 |

Data Path : Z:\pestpcbsrv\HPCHEM1\ECD_R\Data\PR030222\
 Data File : PR053736.D
 Signal(s) : Signal #1: ECD1A.ch Signal #2: ECD2B.ch
 Acq On : 02 Mar 2022 07:04
 Operator : AJ\MA
 Sample : N1692-22MSD
 Misc :
 ALS Vial : 26 Sample Multiplier: 1

Instrument :

ECD_R

ClientSampleId :

BGZM9MSD

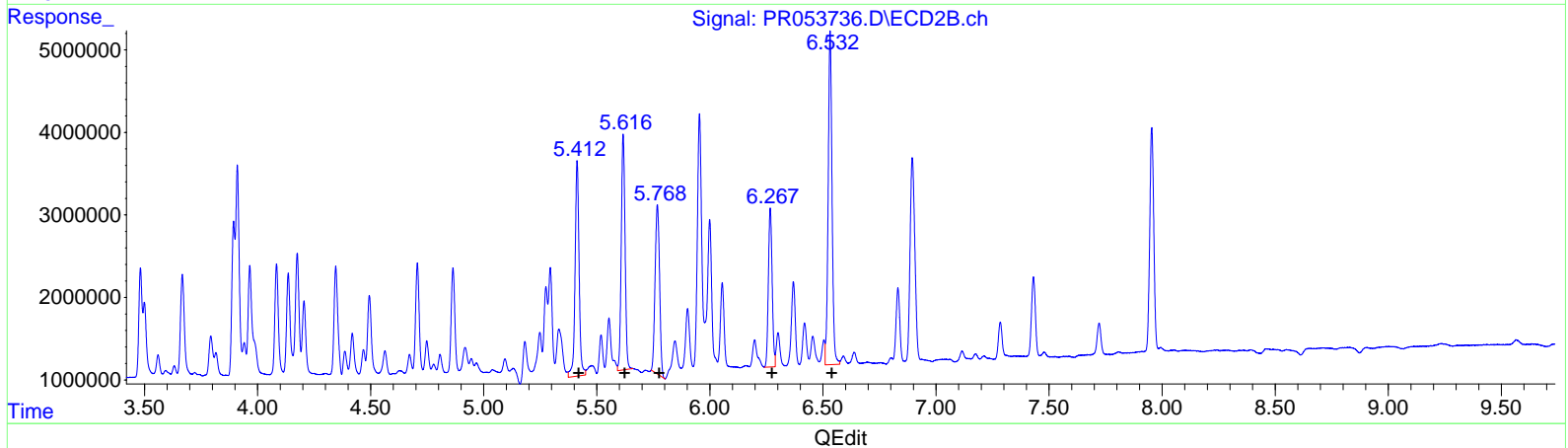
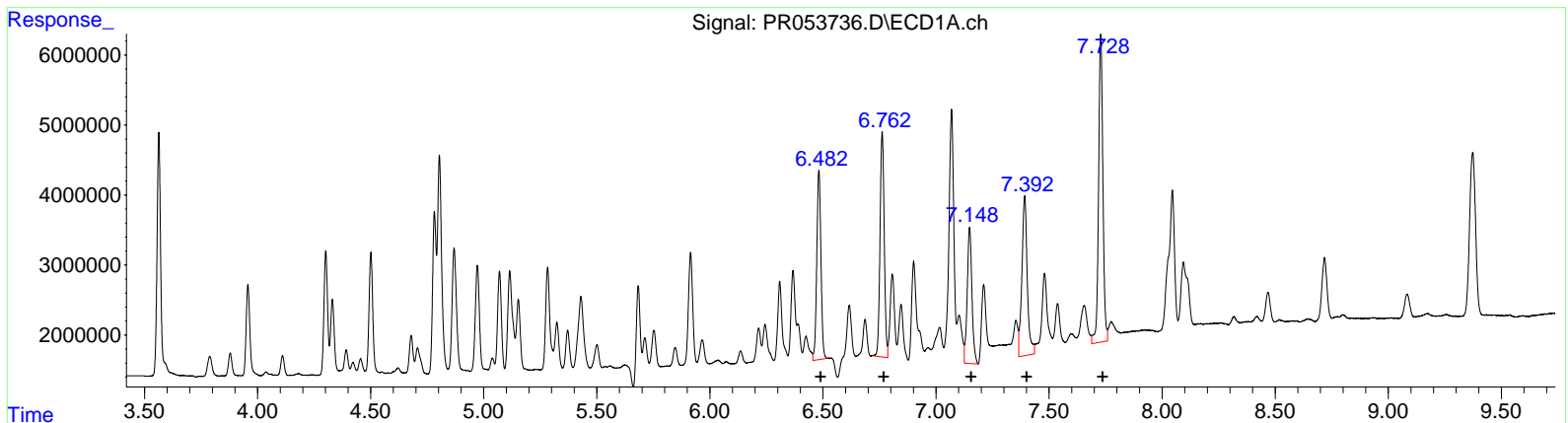
Manual IntegrationsAPPROVED

Reviewed By :Yogesh Patel 03/04/2022

Supervised By :Ankita Jodhani 03/04/2022

Integration File signal 1: autoint1.e
 Integration File signal 2: autoint2.e
 Quant Time: Mar 02 07:59:41 2022
 Quant Method : Z:\pestpcbsrv\HPCHEM1\ECD_R\Method\PR021522CLP.M
 Quant Title : GC EXTRACTABLES
 QLast Update : Wed Feb 16 05:21:54 2022
 Response via : Initial Calibration
 Integrator: ChemStation

Volume Inj. : 1 µl
 Signal #1 Phase : ZB MR1 Signal #2 Phase: ZB MR2
 Signal #1 Info : 30Mx0.32mmx 0.5µm Signal #2 Info : 30M x 0.32mm x 0.25µm



(31) AR-1260-1 (L7)

| R.T. | Response | Conc |
|------|----------|--------|
| 6.48 | 34661977 | 410.54 |
| 6.76 | 41413918 | 421.68 |
| 7.15 | 28220677 | 377.15 |
| 7.39 | 37711727 | 424.67 |
| 7.73 | 58392924 | 341.32 |

(31) AR-1260-1 #2 (L7)

| R.T. | Response | Conc |
|------|----------|--------|
| 5.41 | 32319182 | 454.75 |
| 5.62 | 33407305 | 409.71 |
| 5.77 | 28260517 | 359.77 |
| 6.27 | 22393124 | 332.87 |
| 6.53 | 48022216 | 314.94 |

(+) = Expected Retention Time

Data Path : Z:\pestpcbsrv\HPCHEM1\ECD_R\Data\PR030222\
 Data File : PR053736.D
 Signal(s) : Signal #1: ECD1A.ch Signal #2: ECD2B.ch
 Acq On : 02 Mar 2022 07:04
 Operator : AJ\MA
 Sample : N1692-22MSD
 Misc :
 ALS Vial : 26 Sample Multiplier: 1

Instrument :

ECD_R

ClientSampleId :

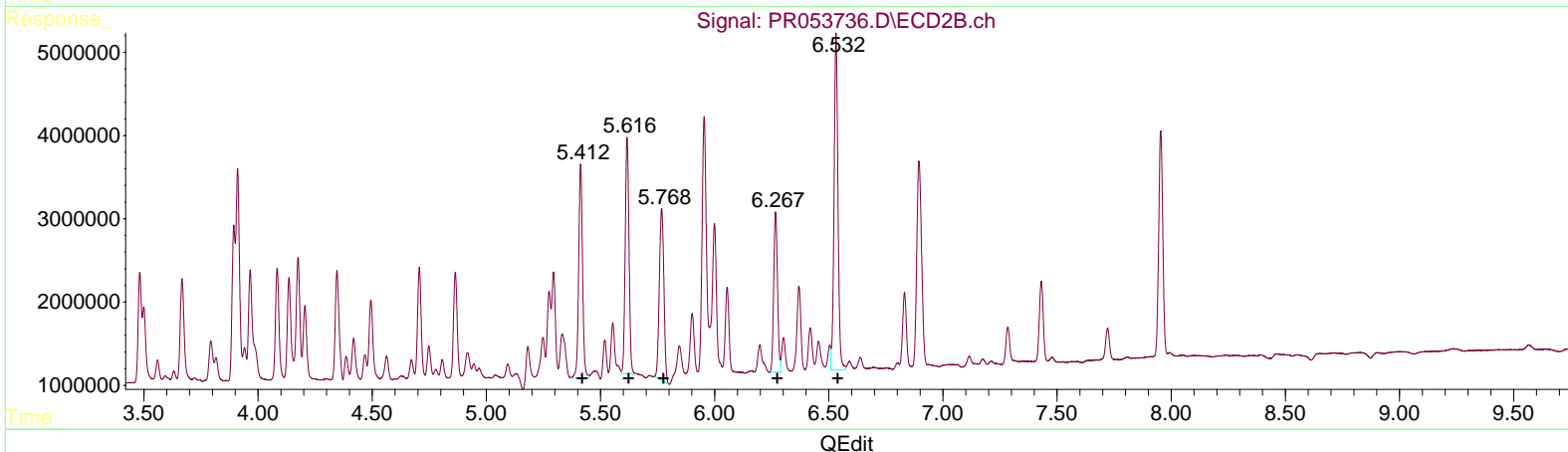
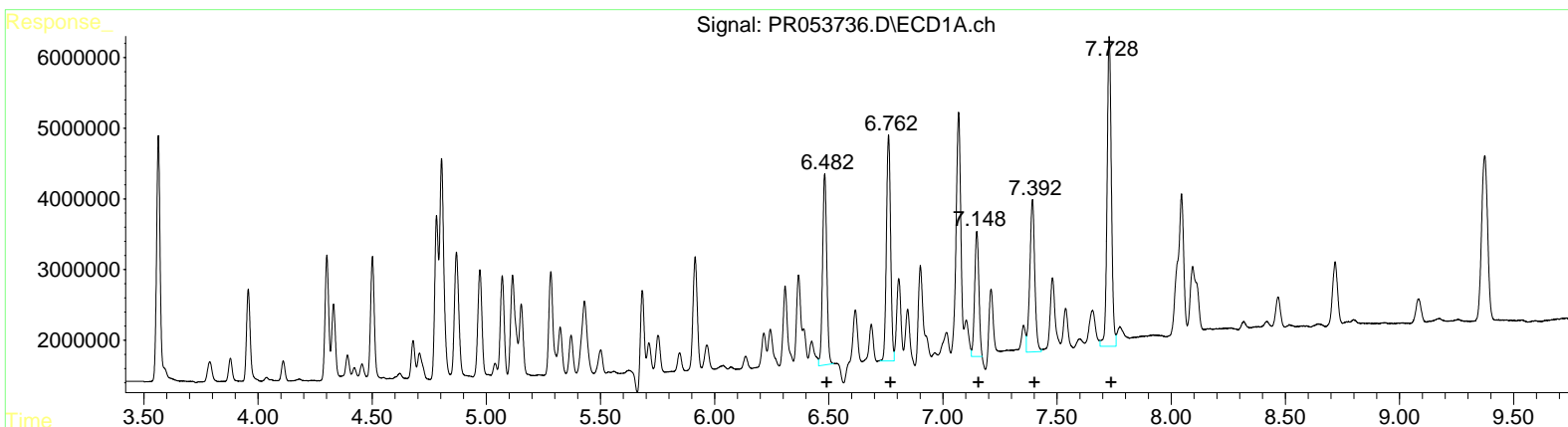
BGZM9MSD

Manual IntegrationsAPPROVED

Reviewed By :Yogesh Patel 03/04/2022
 Supervised By :Ankita Jodhani 03/04/2022

Integration File signal 1: autoint1.e
 Integration File signal 2: autoint2.e
 Quant Time: Mar 02 07:59:41 2022
 Quant Method : Z:\pestpcbsrv\HPCHEM1\ECD_R\Method\PR021522CLP.M
 Quant Title : GC EXTRACTABLES
 QLast Update : Wed Feb 16 05:21:54 2022
 Response via : Initial Calibration
 Integrator: ChemStation

Volume Inj. : 1 µl
 Signal #1 Phase : ZB MR1 Signal #2 Phase: ZB MR2
 Signal #1 Info : 30Mx0.32mmx 0.5µm Signal #2 Info : 30M x 0.32mm x 0.25µm



QEdit

| (31) AR-1260-1 #2 (L7) | R.T. | Response | Conc |
|------------------------|------|----------|--------|
| | 6.48 | 34661977 | 410.54 |
| | 6.76 | 40890148 | 416.34 |
| | 7.15 | 22739430 | 303.90 |
| | 7.39 | 32489727 | 365.87 |
| | 7.73 | 57683512 | 337.18 |

| (31) AR-1260-1 #2 (L7) | R.T. | Response | Conc |
|------------------------|------|----------|--------|
| | 5.41 | 30331155 | 426.78 |
| | 5.62 | 32794910 | 402.19 |
| | 5.77 | 28714152 | 365.54 |
| | 6.27 | 22393124 | 332.87 |
| | 6.53 | 48022216 | 314.94 |