

Data Path : Z:\pestpcbsrv\HPCHEM1\ECD_R\Data\PR030223\
 Data File : PR059976.D
 Signal(s) : Signal #1: ECD1A.ch Signal #2: ECD2B.ch
 Acq On : 02 Mar 2023 04:47
 Operator : YP\AJ
 Sample : 01696-14
 Misc :
 ALS Vial : 49 Sample Multiplier: 1

Integration File signal 1: autoint1.e
 Integration File signal 2: autoint2.e
 Quant Time: Mar 02 06:18:35 2023
 Quant Method : Z:\pestpcbsrv\HPCHEM1\ECD_R\Method\PR022823CLP.M
 Quant Title : GC EXTRACTABLES
 QLast Update : Tue Feb 28 05:24:37 2023
 Response via : Initial Calibration
 Integrator: ChemStation

Volume Inj. : 1 µl
 Signal #1 Phase : ZB MR1 Signal #2 Phase: ZB MR2
 Signal #1 Info : 30Mx0.32mmx 0.5µm Signal #2 Info : 30M x 0.32mm x 0.25µm

Compound	RT#1	RT#2	Resp#1	Resp#2	ng/ml	ng/ml

System Monitoring Compounds						
1) SA Tetrachlo...	3.689	2.904	87512534	120.0E6	25.977	26.461
2) SA Decachlor...	9.657	8.134	135.5E6	218.6E6	57.495	60.474
Target Compounds						
3) L1 AR-1016-1	4.923	4.014	53056457	82646282	564.735	602.079
4) L1 AR-1016-2	4.945	4.032	73772097	119.6E6	546.876	585.054
5) L1 AR-1016-3	5.010	4.210	46443747	60693993	532.373	577.591
6) L1 AR-1016-4	5.113	4.261	38470580	47804967	554.810	556.704
7) L1 AR-1016-5	5.432	4.476	31405673	57687764	465.403	515.612
8) L2 AR-1221-1	3.908	3.127	6247274	7095261	154.875	145.455
9) L2 AR-1221-2	4.002	3.213	7711810	9669901	271.071	280.176
10) L2 AR-1221-3	4.081	3.289	30809068	40067511	348.702	345.631
11) L3 AR-1232-1	4.081	3.289	30809068	40067511	411.123	415.542
12) L3 AR-1232-2	4.635	4.032	39232180	119.6E6	1166.719	1341.725
13) L3 AR-1232-3	4.945	4.210	73772097	60693993	1196.549	1356.551
14) L3 AR-1232-4	5.113	4.302	38470580	57841815	1247.333	1398.664
15) L3 AR-1232-5	5.218	4.476	30849481	57687764	1324.965	1241.440
16) L4 AR-1242-1	4.923	4.014	53056457	82646282	675.216	724.109
17) L4 AR-1242-2	4.945	4.032	73772097	119.6E6	657.907	714.564
18) L4 AR-1242-3	5.010	4.210	46443747	60693993	639.345	701.631
19) L4 AR-1242-4	5.113	4.302	38470580	57841815	668.391	674.859
20) L4 AR-1242-5	5.907	4.844	3815874	72294369	70.615	700.082 #
21) L5 AR-1248-1	4.923	4.014	53056457	82646282	875.540	949.525
22) L5 AR-1248-2	5.218	4.261	30849481	47804967	379.939	370.328
23) L5 AR-1248-3	5.432	4.302	31405673	57841815	334.346	444.915 #
24) L5 AR-1248-4	5.865	4.476	38568639	57687764	401.293	365.580
25) L5 AR-1248-5	5.907	4.887	3815874	13502715	41.124	94.761 #
26) L6 AR-1254-1	5.840	4.844	32233766	72294369	321.580	310.868
27) L6 AR-1254-2	6.077	5.003	54620481	57561131	359.737	286.692
28) L6 AR-1254-3	6.472	5.423	25890919	25585114	166.617	79.846 #
29) L6 AR-1254-4	6.784	5.667	16202240	9867042	147.057	55.009 #
30) L6 AR-1254-5	7.242	6.111	95703270	192.1E6	780.098	694.566
31) L7 AR-1260-1	6.653	5.563	70289050	178.0E6	571.357	778.148 #
32) L7 AR-1260-2	6.935	5.767	149.1E6	150.0E6	1061.137	557.524 #
33) L7 AR-1260-3	7.330	5.923	49520721	162.6E6	457.219	641.969 #
34) L7 AR-1260-4	7.574	6.427	65064179	111.8E6	527.446	531.617
35) L7 AR-1260-5	7.913	6.693	114.1E6	254.8E6	495.943	536.099
36) L8 AR-1262-1	7.330	6.154	49520721	121.0E6	322.437	396.051
37) L8 AR-1262-2	7.913	6.427	114.1E6	111.8E6	439.868	411.298
38) L8 AR-1262-3	8.232	6.996	76858379	45413472	409.185	221.445 #
39) L8 AR-1262-4	8.311	7.062	17118395	177.8E6	118.001	463.792 #
40) L8 AR-1262-5	8.946	7.601	31723854	50659397	301.515	299.360
41) L9 AR-1268-1	8.232	6.996	76858379	45413472	173.812	51.685 #

Data Path : Z:\pestpcbsrv\HPCHEM1\ECD_R\Data\PR030223\
 Data File : PR059976.D
 Signal(s) : Signal #1: ECD1A.ch Signal #2: ECD2B.ch
 Acq On : 02 Mar 2023 04:47
 Operator : YP\AJ
 Sample : 01696-14
 Misc :
 ALS Vial : 49 Sample Multiplier: 1

Integration File signal 1: autoint1.e
 Integration File signal 2: autoint2.e
 Quant Time: Mar 02 06:18:35 2023
 Quant Method : Z:\pestpcbsrv\HPCHEM1\ECD_R\Method\PR022823CLP.M
 Quant Title : GC EXTRACTABLES
 QLast Update : Tue Feb 28 05:24:37 2023
 Response via : Initial Calibration
 Integrator: ChemStation

Volume Inj. : 1 µl
 Signal #1 Phase : ZB MR1 Signal #2 Phase: ZB MR2
 Signal #1 Info : 30Mx0.32mmx 0.5µm Signal #2 Info : 30M x 0.32mm x 0.25µm

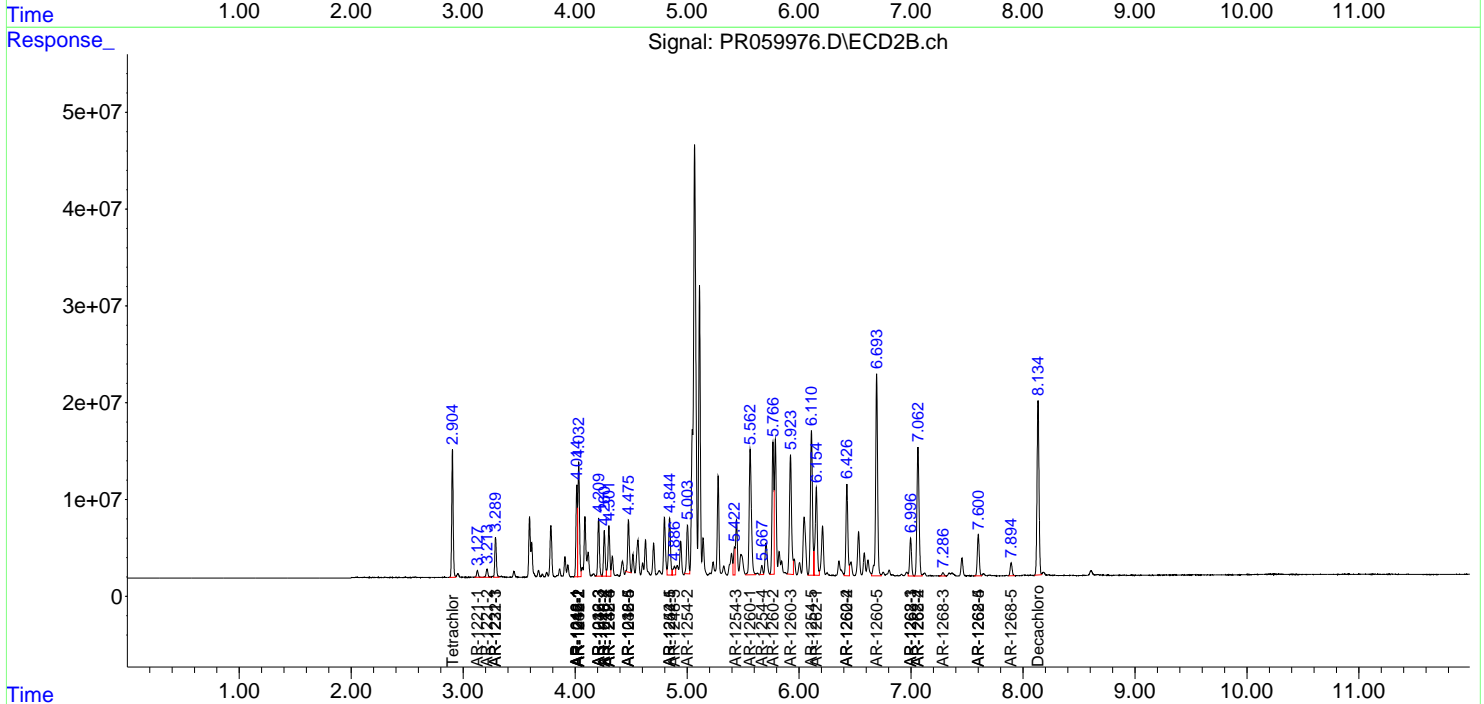
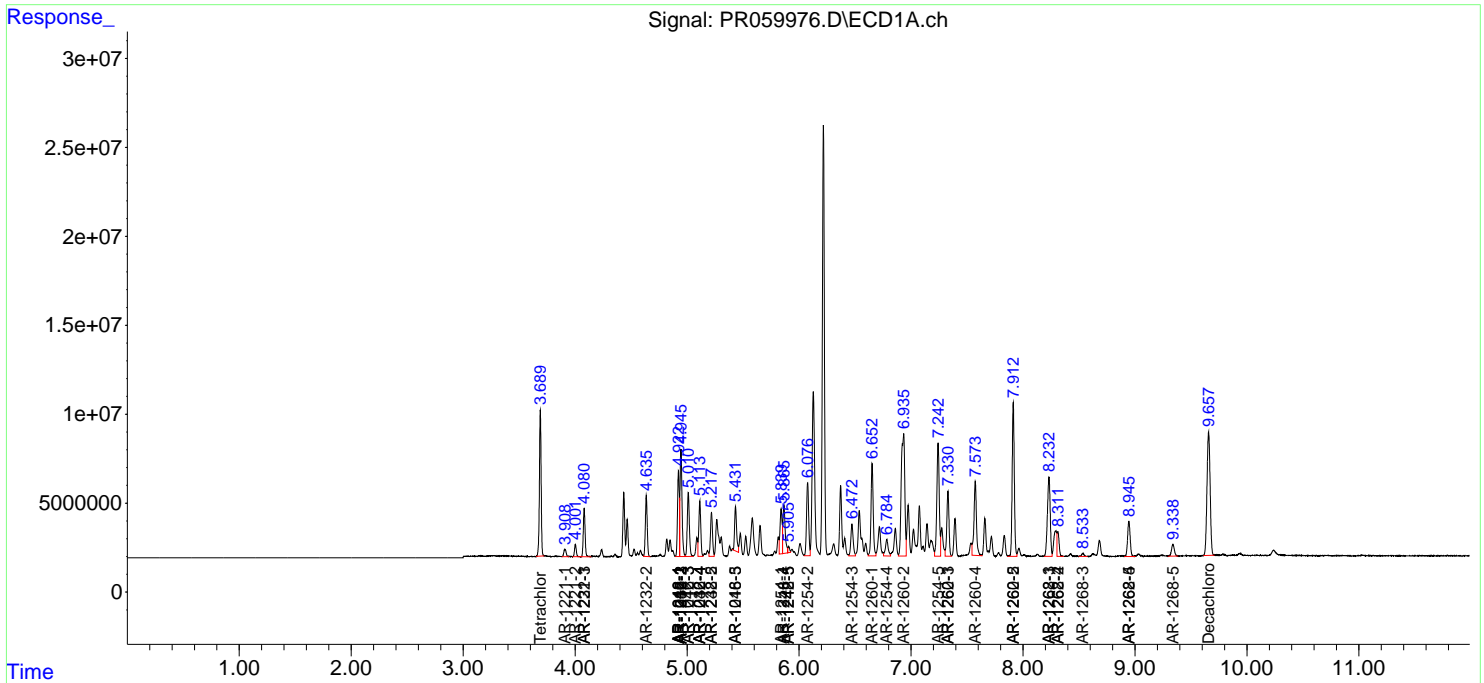
	Compound	RT#1	RT#2	Resp#1	Resp#2	ng/ml	ng/ml
42)	L9 AR-1268-2	8.311	7.062	17118395	177.8E6	42.804	225.372 #
43)	L9 AR-1268-3	8.534	7.286	2638435	4426523	7.322	6.373
44)	L9 AR-1268-4	8.946	7.601	31723854	50659397	201.161	191.146
45)	L9 AR-1268-5	9.339	7.894	11636902	16156476	10.093	7.706

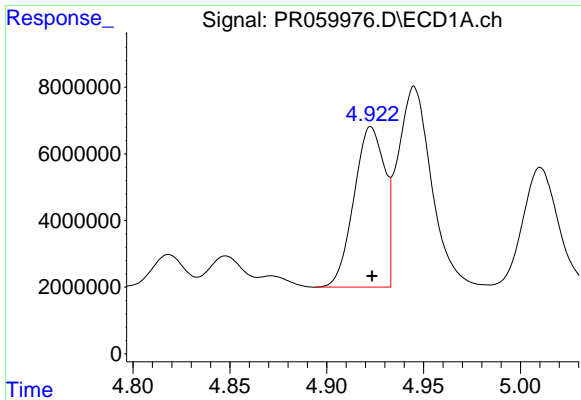
(f)=RT Delta > 1/2 Window (#)=Amounts differ by > 25% (m)=manual int.

Data Path : Z:\pestpcbsrv\HPCHEM1\ECD_R\Data\PR030223\
 Data File : PR059976.D
 Signal(s) : Signal #1: ECD1A.ch Signal #2: ECD2B.ch
 Acq On : 02 Mar 2023 04:47
 Operator : YP\AJ
 Sample : 01696-14
 Misc :
 ALS Vial : 49 Sample Multiplier: 1

Integration File signal 1: autoint1.e
 Integration File signal 2: autoint2.e
 Quant Time: Mar 02 06:18:35 2023
 Quant Method : Z:\pestpcbsrv\HPCHEM1\ECD_R\Method\PR022823CLP.M
 Quant Title : GC EXTRACTABLES
 QLast Update : Tue Feb 28 05:24:37 2023
 Response via : Initial Calibration
 Integrator: ChemStation

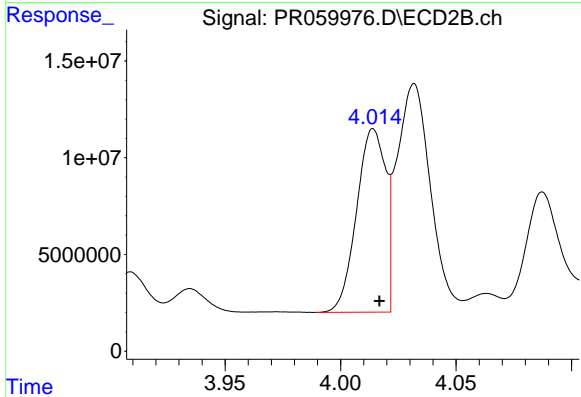
Volume Inj. : 1 µl
 Signal #1 Phase : ZB MR1 Signal #2 Phase: ZB MR2
 Signal #1 Info : 30Mx0.32mmx 0.5µm Signal #2 Info : 30M x 0.32mm x 0.25µm





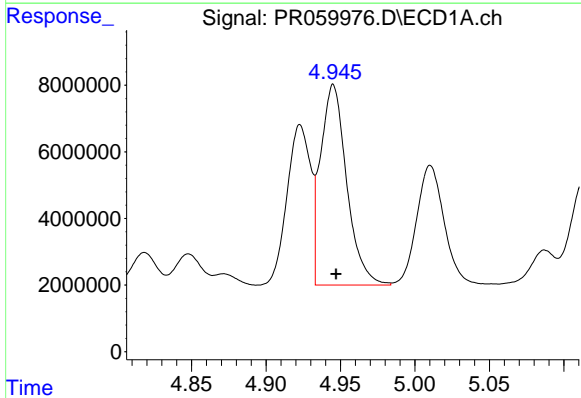
#3 AR-1016-1

R.T.: 4.923 min
Delta R.T.: 0.000 min
Response: 53056457
Conc: 564.74 ng/ml



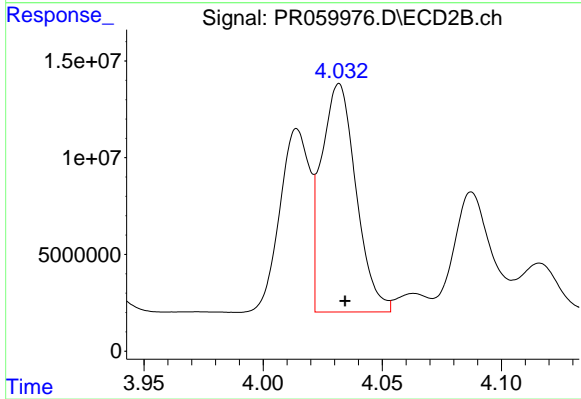
#3 AR-1016-1

R.T.: 4.014 min
Delta R.T.: -0.003 min
Response: 82646282
Conc: 602.08 ng/ml



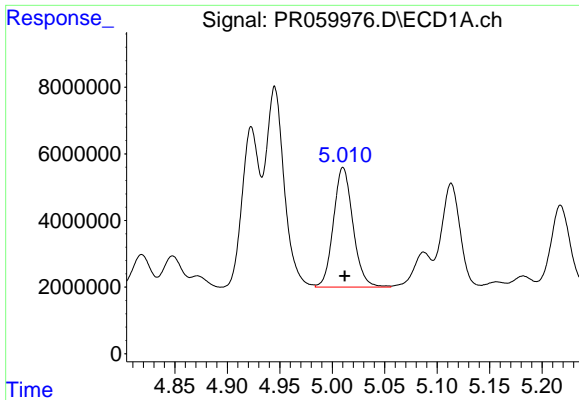
#4 AR-1016-2

R.T.: 4.945 min
Delta R.T.: -0.002 min
Response: 73772097
Conc: 546.88 ng/ml



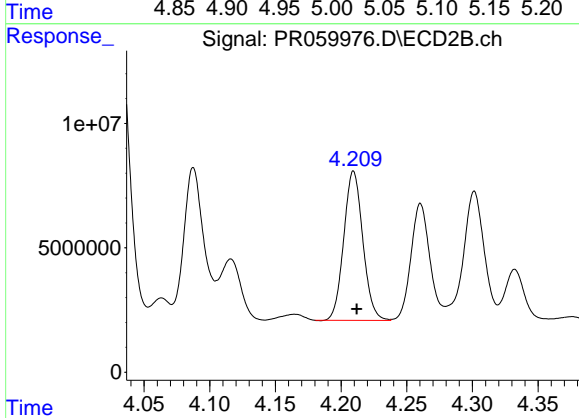
#4 AR-1016-2

R.T.: 4.032 min
Delta R.T.: -0.003 min
Response: 119555649
Conc: 585.05 ng/ml



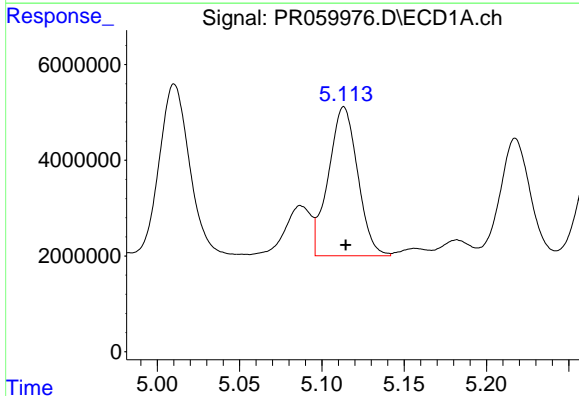
#5 AR-1016-3

R.T.: 5.010 min
Delta R.T.: -0.002 min
Response: 46443747
Conc: 532.37 ng/ml



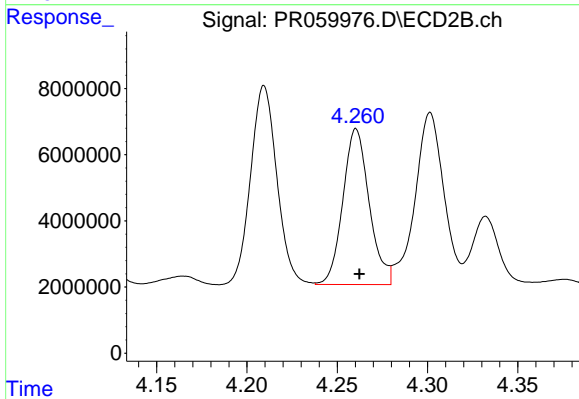
#5 AR-1016-3

R.T.: 4.210 min
Delta R.T.: -0.002 min
Response: 60693993
Conc: 577.59 ng/ml



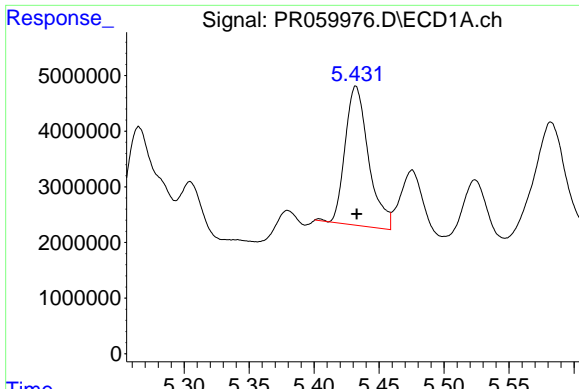
#6 AR-1016-4

R.T.: 5.113 min
Delta R.T.: -0.001 min
Response: 38470580
Conc: 554.81 ng/ml



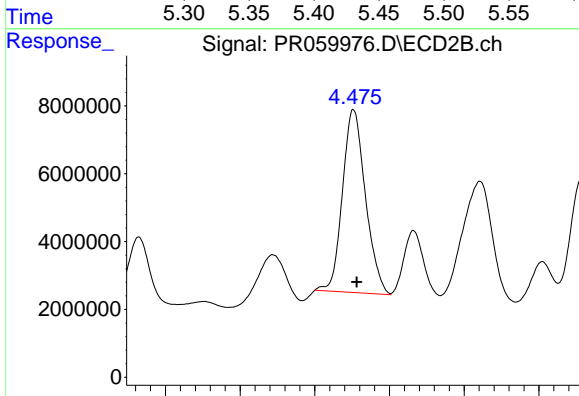
#6 AR-1016-4

R.T.: 4.261 min
Delta R.T.: -0.002 min
Response: 47804967
Conc: 556.70 ng/ml



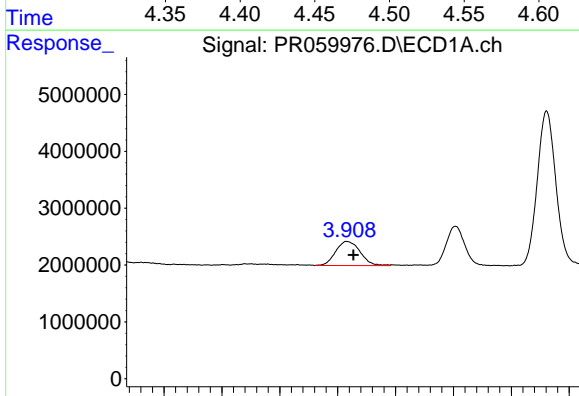
#7 AR-1016-5

R.T.: 5.432 min
 Delta R.T.: 0.000 min
 Response: 31405673
 Conc: 465.40 ng/ml



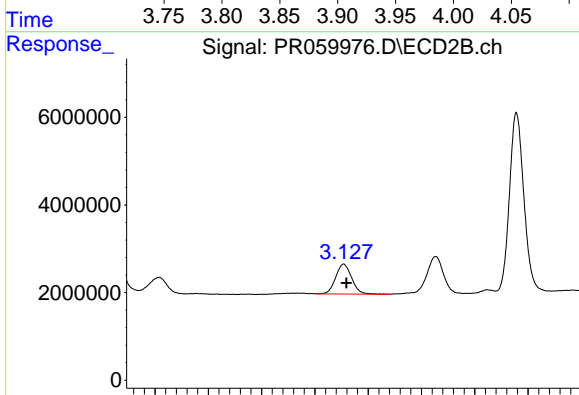
#7 AR-1016-5

R.T.: 4.476 min
 Delta R.T.: -0.002 min
 Response: 57687764
 Conc: 515.61 ng/ml



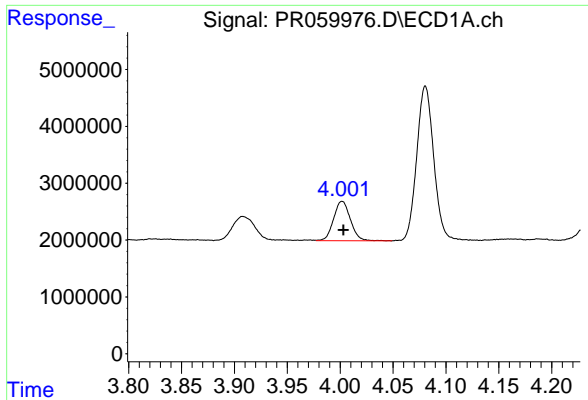
#8 AR-1221-1

R.T.: 3.908 min
 Delta R.T.: -0.005 min
 Response: 6247274
 Conc: 154.87 ng/ml

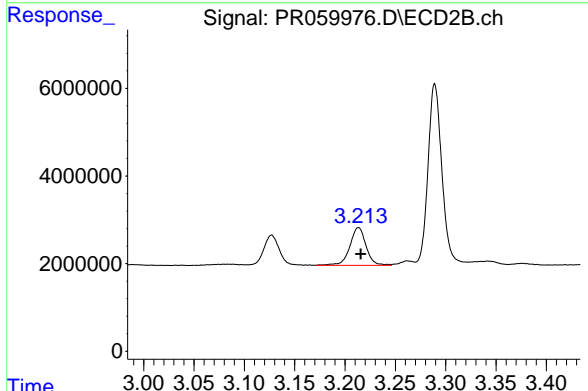


#8 AR-1221-1

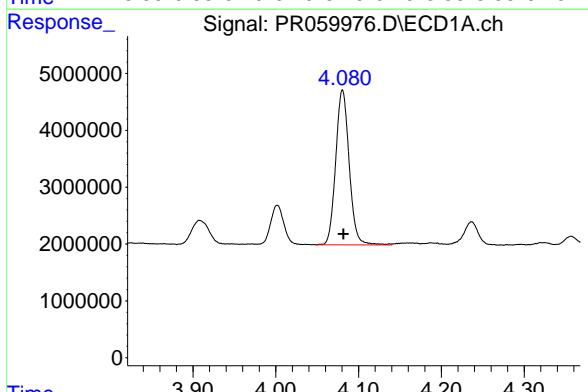
R.T.: 3.127 min
 Delta R.T.: -0.003 min
 Response: 7095261
 Conc: 145.45 ng/ml



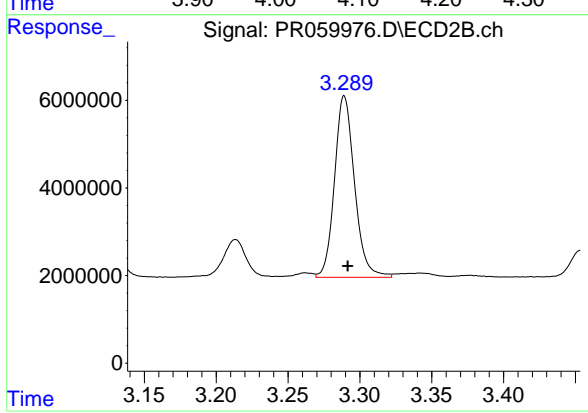
#9 AR-1221-2
R.T.: 4.002 min
Delta R.T.: -0.001 min
Response: 7711810
Conc: 271.07 ng/ml



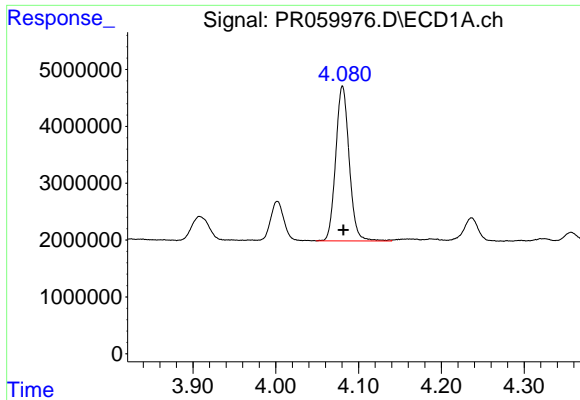
#9 AR-1221-2
R.T.: 3.213 min
Delta R.T.: -0.002 min
Response: 9669901
Conc: 280.18 ng/ml



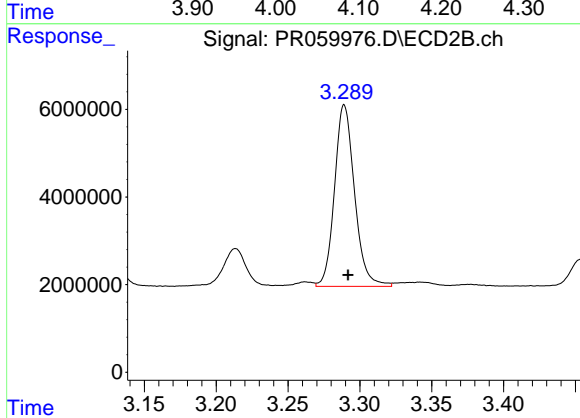
#10 AR-1221-3
R.T.: 4.081 min
Delta R.T.: 0.000 min
Response: 30809068
Conc: 348.70 ng/ml



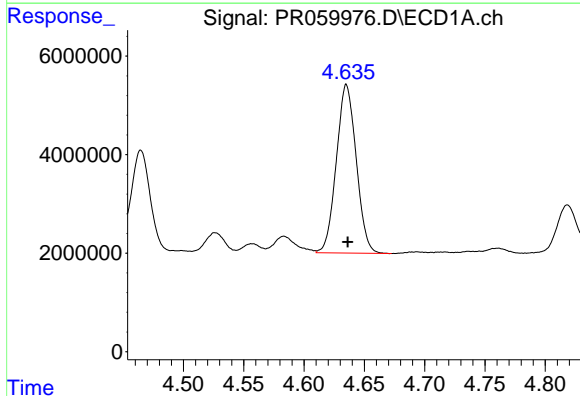
#10 AR-1221-3
R.T.: 3.289 min
Delta R.T.: -0.002 min
Response: 40067511
Conc: 345.63 ng/ml



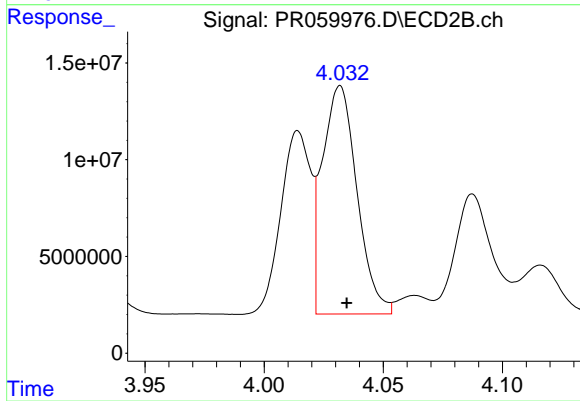
#11 AR-1232-1
R.T.: 4.081 min
Delta R.T.: -0.001 min
Response: 30809068
Conc: 411.12 ng/ml



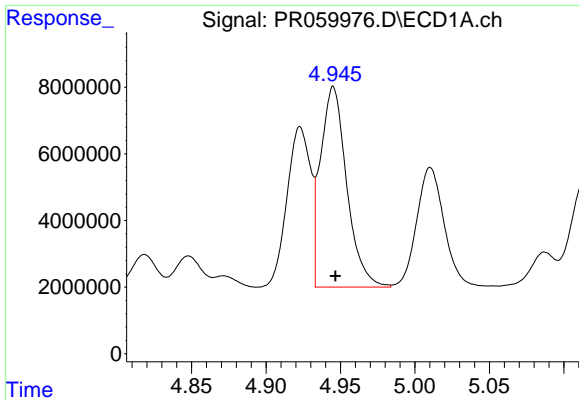
#11 AR-1232-1
R.T.: 3.289 min
Delta R.T.: -0.002 min
Response: 40067511
Conc: 415.54 ng/ml



#12 AR-1232-2
R.T.: 4.635 min
Delta R.T.: 0.000 min
Response: 39232180
Conc: 1166.72 ng/ml

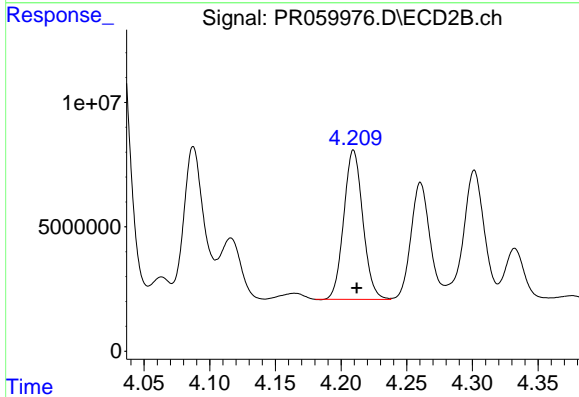


#12 AR-1232-2
R.T.: 4.032 min
Delta R.T.: -0.003 min
Response: 119555649
Conc: 1341.73 ng/ml



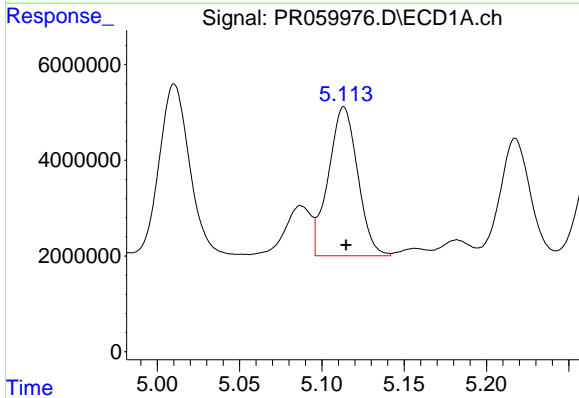
#13 AR-1232-3

R.T.: 4.945 min
Delta R.T.: -0.001 min
Response: 73772097
Conc: 1196.55 ng/ml



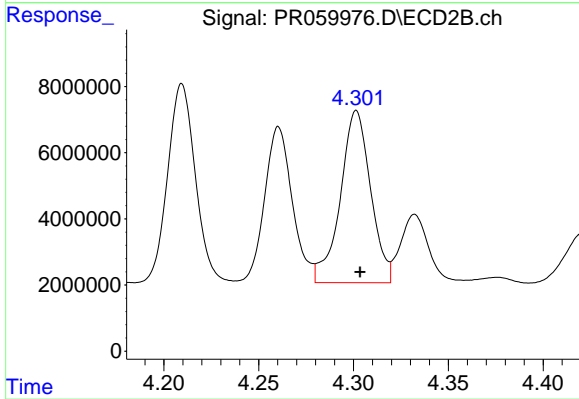
#13 AR-1232-3

R.T.: 4.210 min
Delta R.T.: -0.002 min
Response: 60693993
Conc: 1356.55 ng/ml



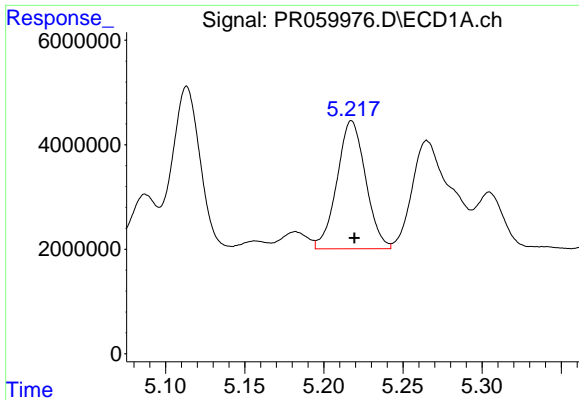
#14 AR-1232-4

R.T.: 5.113 min
Delta R.T.: -0.001 min
Response: 38470580
Conc: 1247.33 ng/ml



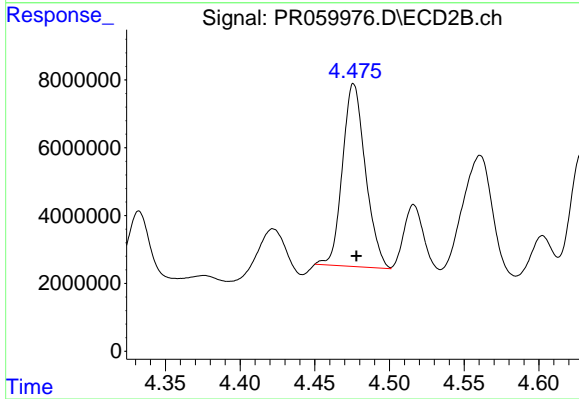
#14 AR-1232-4

R.T.: 4.302 min
Delta R.T.: -0.002 min
Response: 57841815
Conc: 1398.66 ng/ml



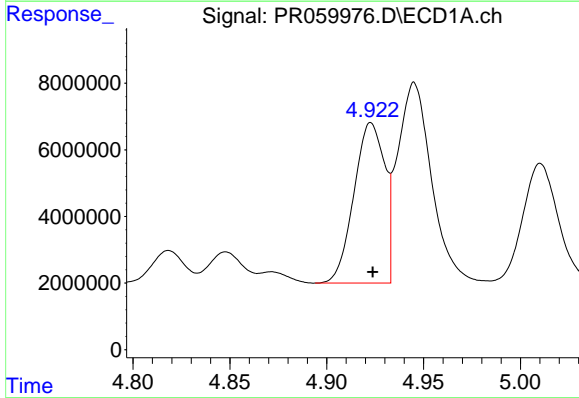
#15 AR-1232-5

R.T.: 5.218 min
Delta R.T.: -0.002 min
Response: 30849481
Conc: 1324.97 ng/ml



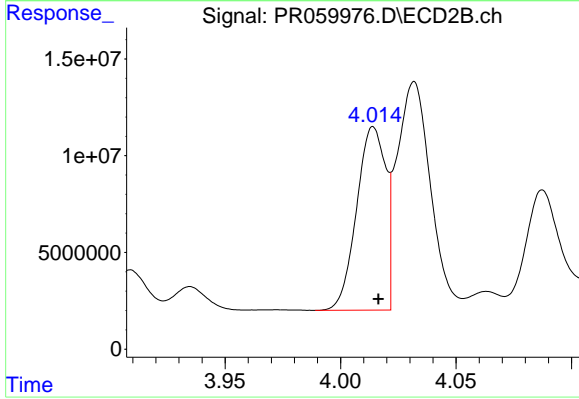
#15 AR-1232-5

R.T.: 4.476 min
Delta R.T.: -0.002 min
Response: 57687764
Conc: 1241.44 ng/ml



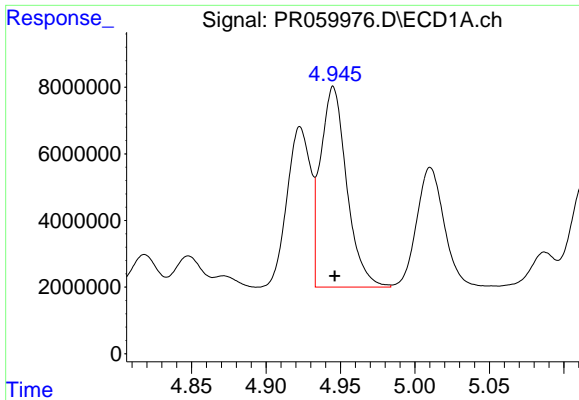
#16 AR-1242-1

R.T.: 4.923 min
Delta R.T.: 0.000 min
Response: 53056457
Conc: 675.22 ng/ml



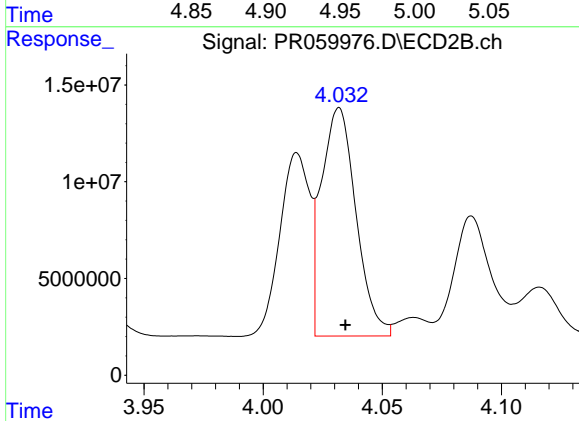
#16 AR-1242-1

R.T.: 4.014 min
Delta R.T.: -0.002 min
Response: 82646282
Conc: 724.11 ng/ml



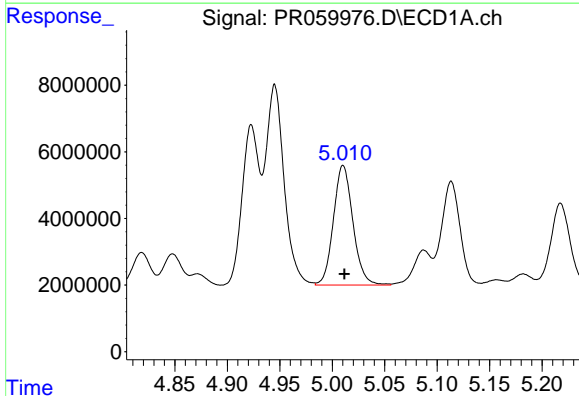
#17 AR-1242-2

R.T.: 4.945 min
Delta R.T.: 0.000 min
Response: 73772097
Conc: 657.91 ng/ml



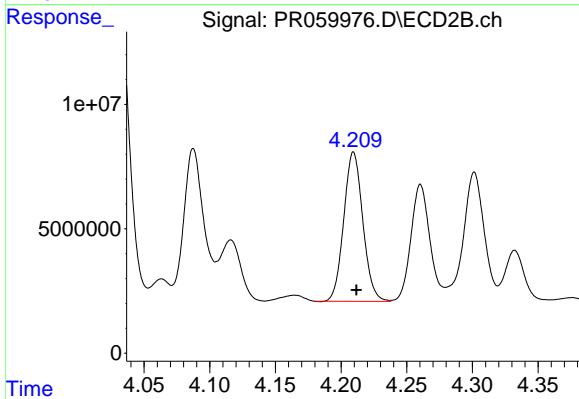
#17 AR-1242-2

R.T.: 4.032 min
Delta R.T.: -0.003 min
Response: 119555649
Conc: 714.56 ng/ml



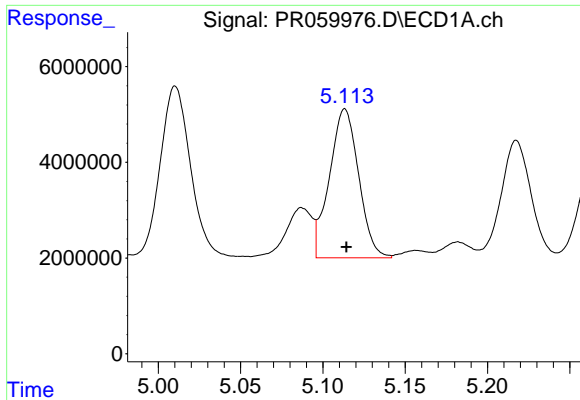
#18 AR-1242-3

R.T.: 5.010 min
Delta R.T.: -0.001 min
Response: 46443747
Conc: 639.35 ng/ml



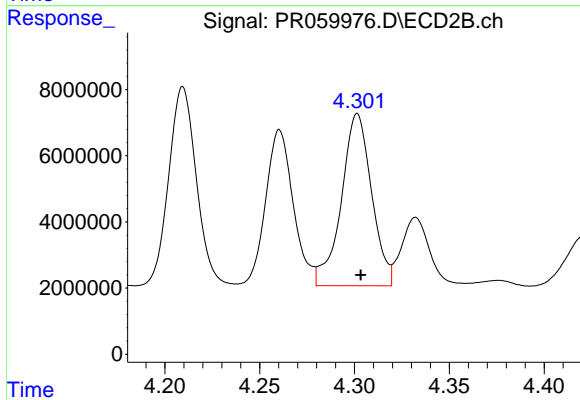
#18 AR-1242-3

R.T.: 4.210 min
Delta R.T.: -0.002 min
Response: 60693993
Conc: 701.63 ng/ml



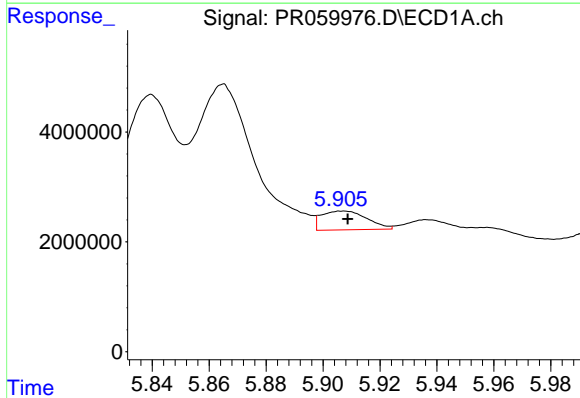
#19 AR-1242-4

R.T.: 5.113 min
Delta R.T.: 0.000 min
Response: 38470580
Conc: 668.39 ng/ml



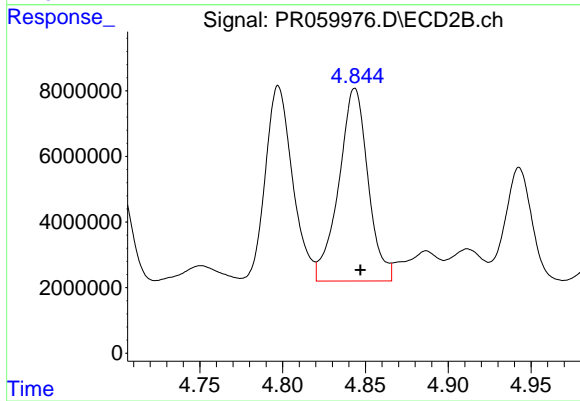
#19 AR-1242-4

R.T.: 4.302 min
Delta R.T.: -0.002 min
Response: 57841815
Conc: 674.86 ng/ml



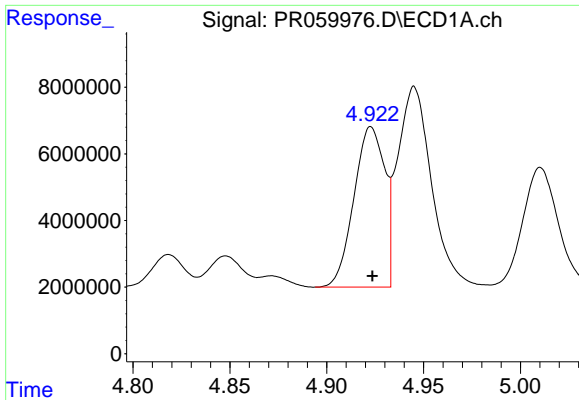
#20 AR-1242-5

R.T.: 5.907 min
Delta R.T.: -0.002 min
Response: 3815874
Conc: 70.61 ng/ml



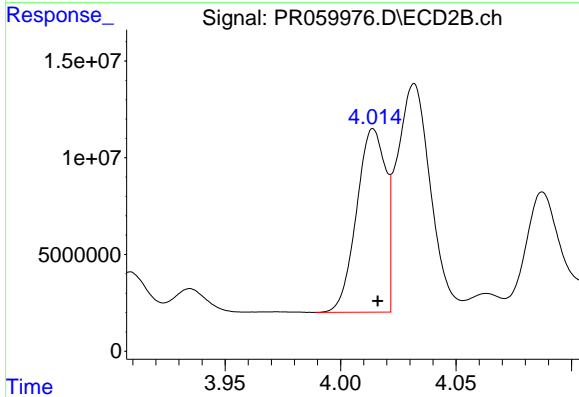
#20 AR-1242-5

R.T.: 4.844 min
Delta R.T.: -0.003 min
Response: 72294369
Conc: 700.08 ng/ml



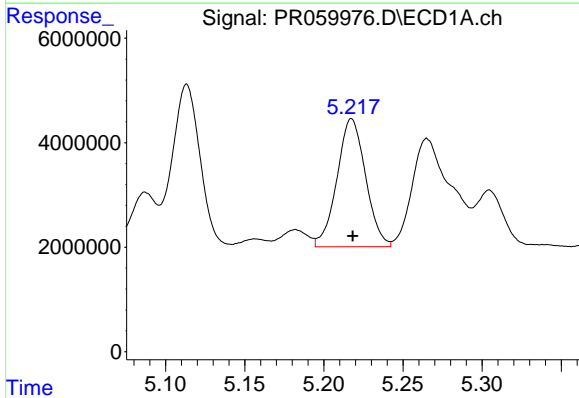
#21 AR-1248-1

R.T.: 4.923 min
Delta R.T.: 0.000 min
Response: 53056457
Conc: 875.54 ng/ml



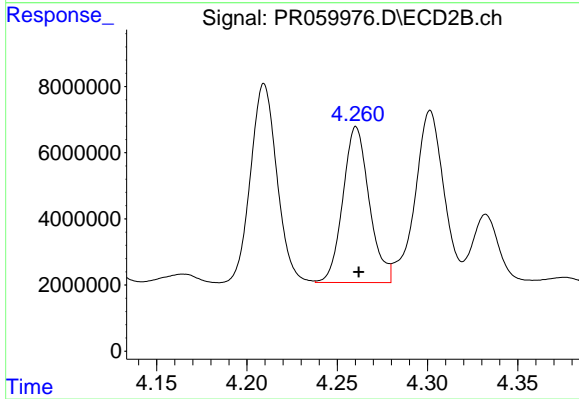
#21 AR-1248-1

R.T.: 4.014 min
Delta R.T.: -0.002 min
Response: 82646282
Conc: 949.53 ng/ml



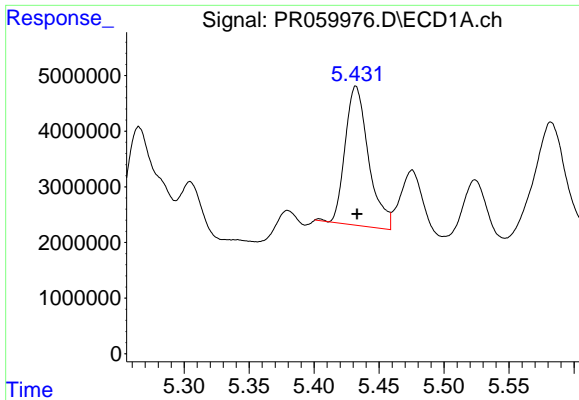
#22 AR-1248-2

R.T.: 5.218 min
Delta R.T.: 0.000 min
Response: 30849481
Conc: 379.94 ng/ml



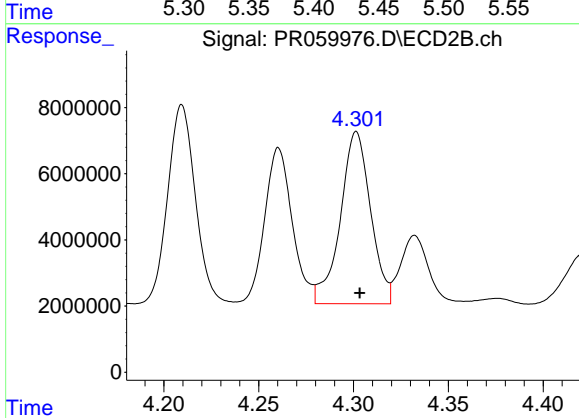
#22 AR-1248-2

R.T.: 4.261 min
Delta R.T.: -0.001 min
Response: 47804967
Conc: 370.33 ng/ml



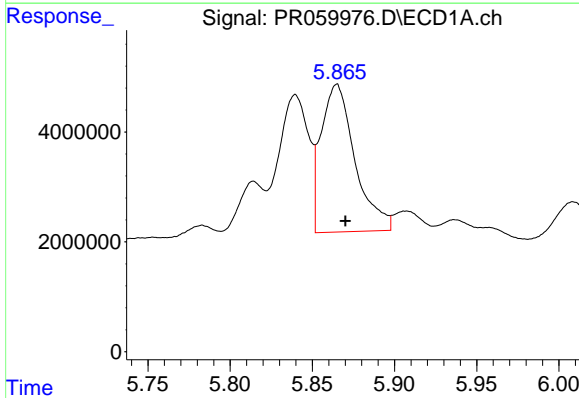
#23 AR-1248-3

R.T.: 5.432 min
Delta R.T.: 0.000 min
Response: 31405673
Conc: 334.35 ng/ml



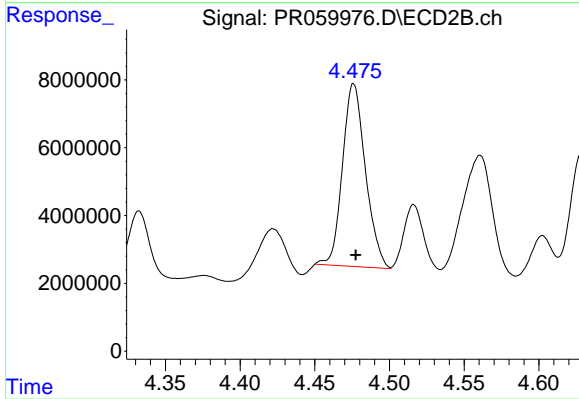
#23 AR-1248-3

R.T.: 4.302 min
Delta R.T.: -0.002 min
Response: 57841815
Conc: 444.92 ng/ml



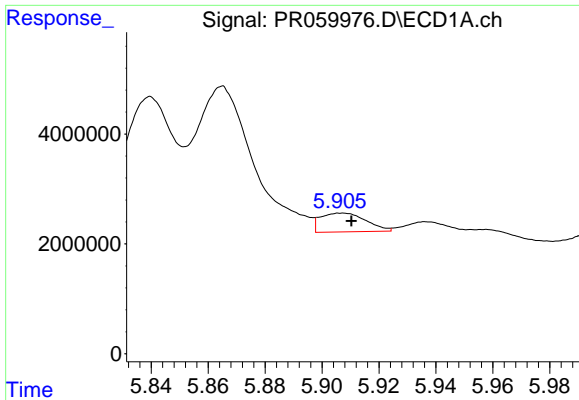
#24 AR-1248-4

R.T.: 5.865 min
Delta R.T.: -0.005 min
Response: 38568639
Conc: 401.29 ng/ml



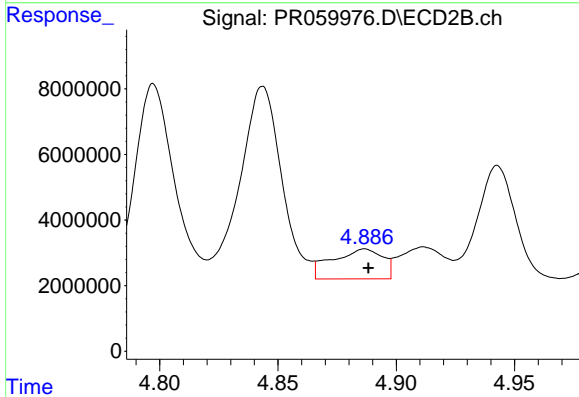
#24 AR-1248-4

R.T.: 4.476 min
Delta R.T.: -0.001 min
Response: 57687764
Conc: 365.58 ng/ml



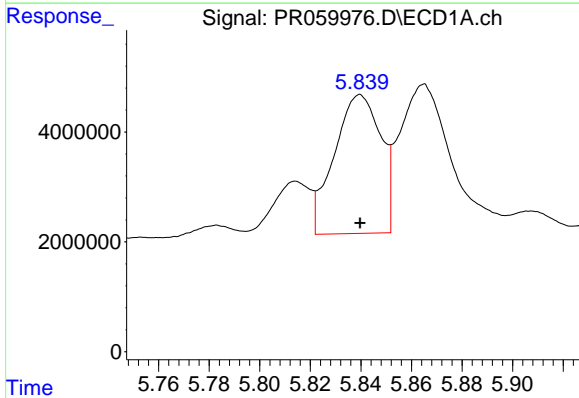
#25 AR-1248-5

R.T.: 5.907 min
Delta R.T.: -0.003 min
Response: 3815874
Conc: 41.12 ng/ml



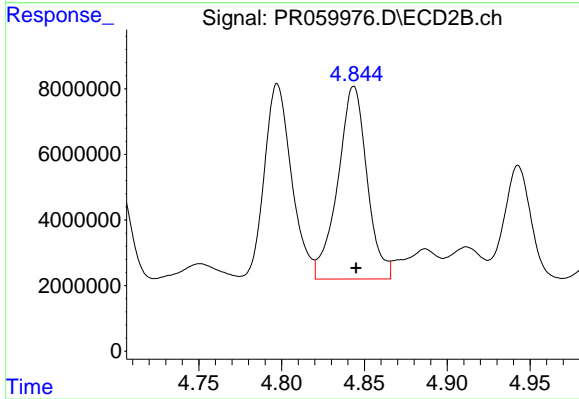
#25 AR-1248-5

R.T.: 4.887 min
Delta R.T.: -0.002 min
Response: 13502715
Conc: 94.76 ng/ml



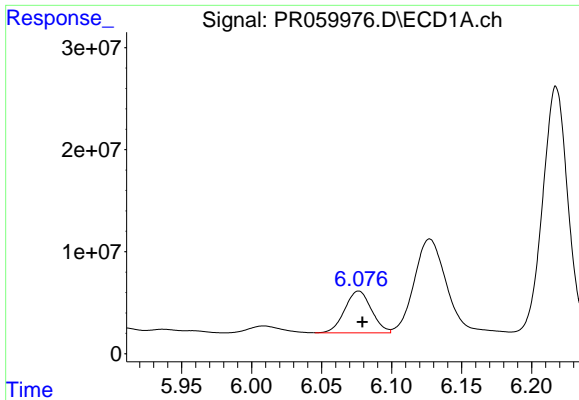
#26 AR-1254-1

R.T.: 5.840 min
Delta R.T.: 0.000 min
Response: 32233766
Conc: 321.58 ng/ml



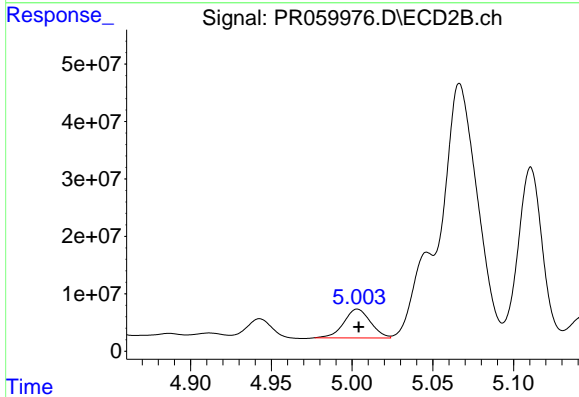
#26 AR-1254-1

R.T.: 4.844 min
Delta R.T.: -0.001 min
Response: 72294369
Conc: 310.87 ng/ml



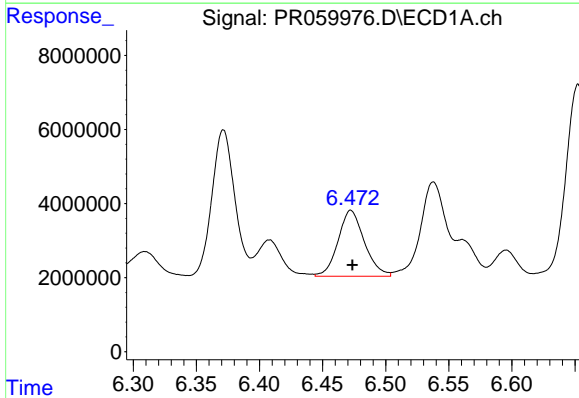
#27 AR-1254-2

R.T.: 6.077 min
Delta R.T.: -0.003 min
Response: 54620481
Conc: 359.74 ng/ml



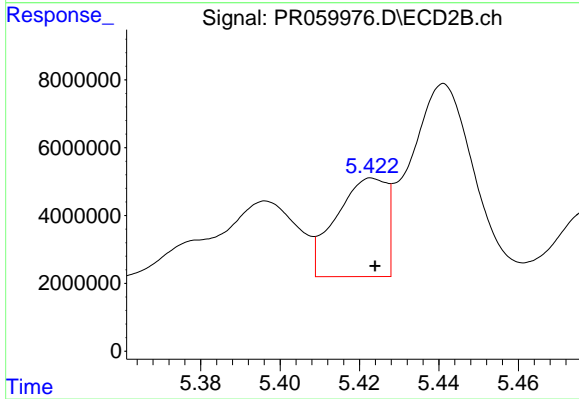
#27 AR-1254-2

R.T.: 5.003 min
Delta R.T.: 0.000 min
Response: 57561131
Conc: 286.69 ng/ml



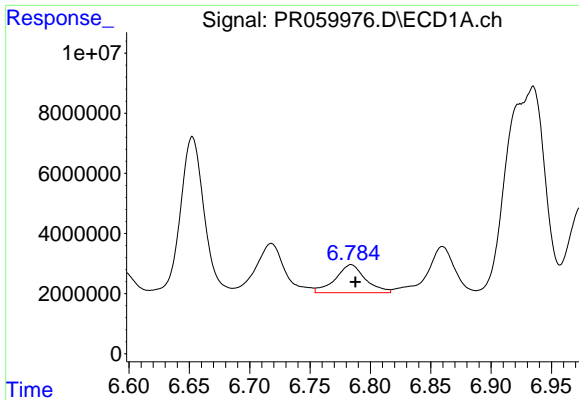
#28 AR-1254-3

R.T.: 6.472 min
Delta R.T.: -0.001 min
Response: 25890919
Conc: 166.62 ng/ml

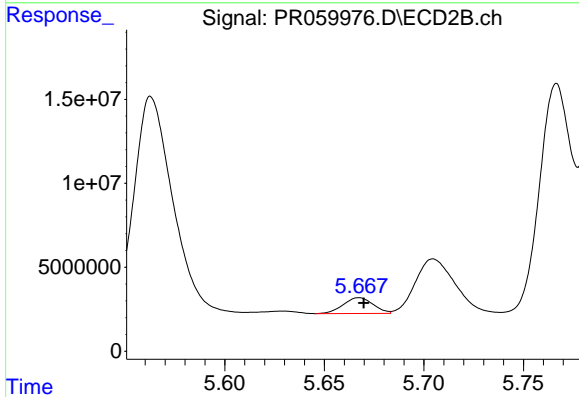


#28 AR-1254-3

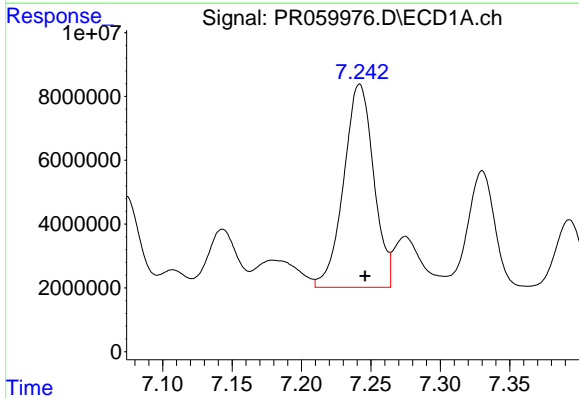
R.T.: 5.423 min
Delta R.T.: 0.000 min
Response: 25585114
Conc: 79.85 ng/ml



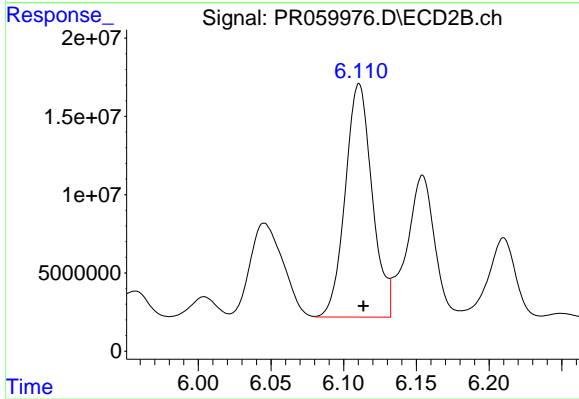
#29 AR-1254-4
 R.T.: 6.784 min
 Delta R.T.: -0.003 min
 Response: 16202240
 Conc: 147.06 ng/ml



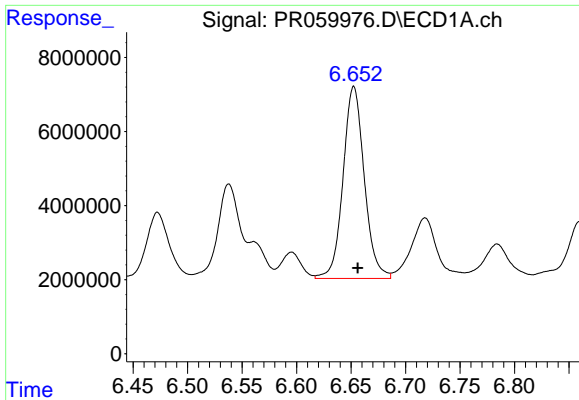
#29 AR-1254-4
 R.T.: 5.667 min
 Delta R.T.: -0.002 min
 Response: 9867042
 Conc: 55.01 ng/ml



#30 AR-1254-5
 R.T.: 7.242 min
 Delta R.T.: -0.004 min
 Response: 95703270
 Conc: 780.10 ng/ml

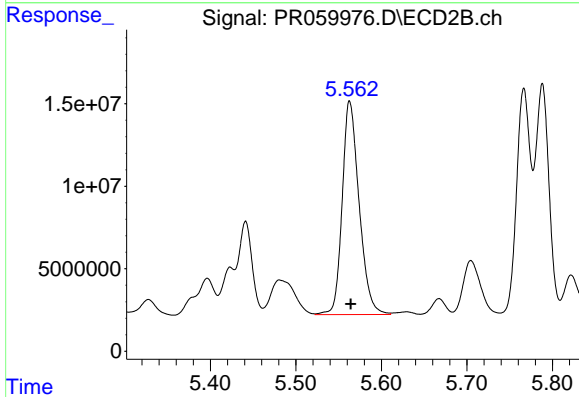


#30 AR-1254-5
 R.T.: 6.111 min
 Delta R.T.: -0.003 min
 Response: 192066845
 Conc: 694.57 ng/ml



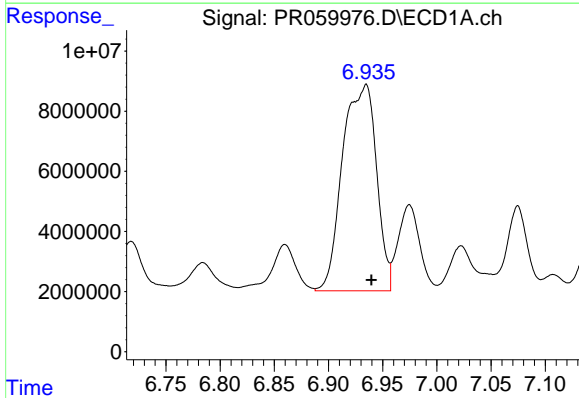
#31 AR-1260-1

R.T.: 6.653 min
Delta R.T.: -0.004 min
Response: 70289050
Conc: 571.36 ng/ml



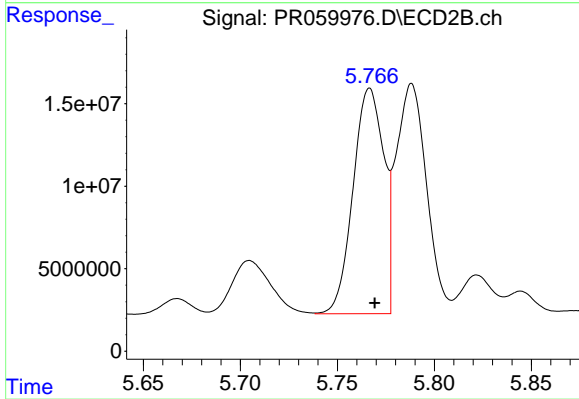
#31 AR-1260-1

R.T.: 5.563 min
Delta R.T.: -0.001 min
Response: 177959448
Conc: 778.15 ng/ml



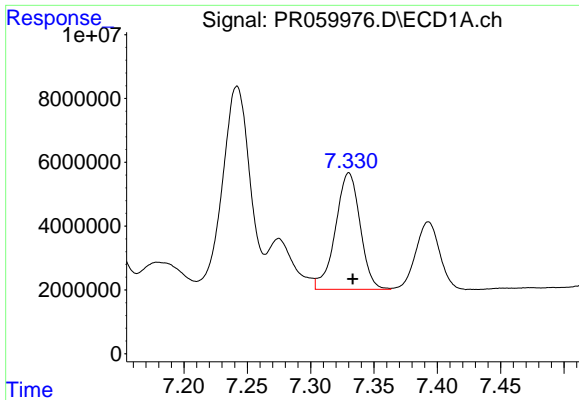
#32 AR-1260-2

R.T.: 6.935 min
Delta R.T.: -0.005 min
Response: 149079443
Conc: 1061.14 ng/ml



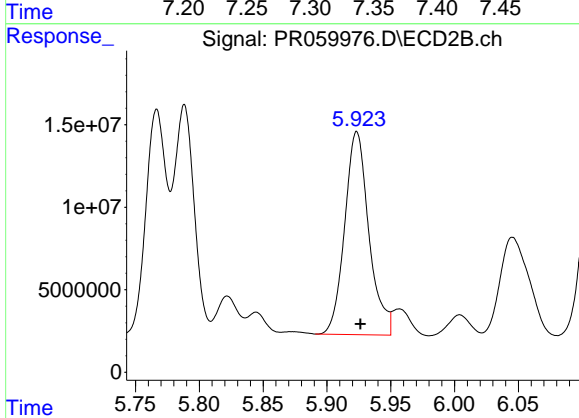
#32 AR-1260-2

R.T.: 5.767 min
Delta R.T.: -0.003 min
Response: 149968591
Conc: 557.52 ng/ml



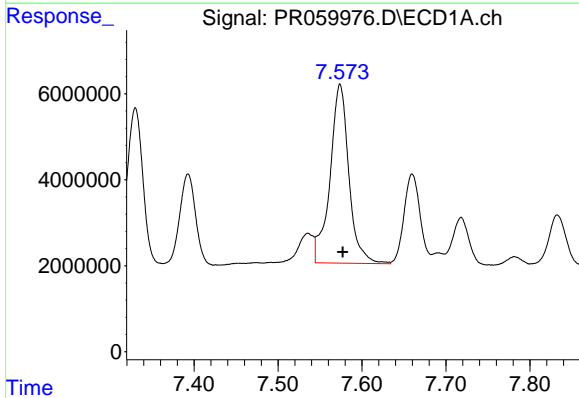
#33 AR-1260-3

R.T.: 7.330 min
Delta R.T.: -0.003 min
Response: 49520721
Conc: 457.22 ng/ml



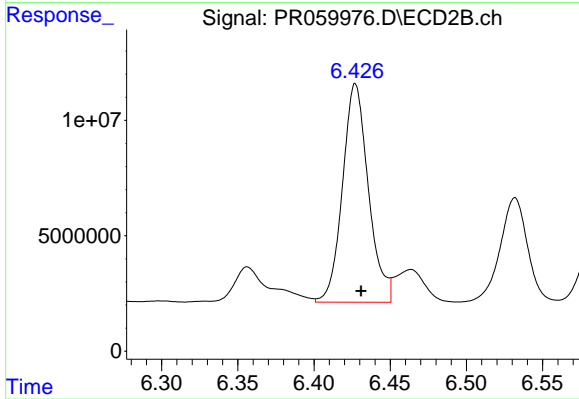
#33 AR-1260-3

R.T.: 5.923 min
Delta R.T.: -0.003 min
Response: 162617542
Conc: 641.97 ng/ml



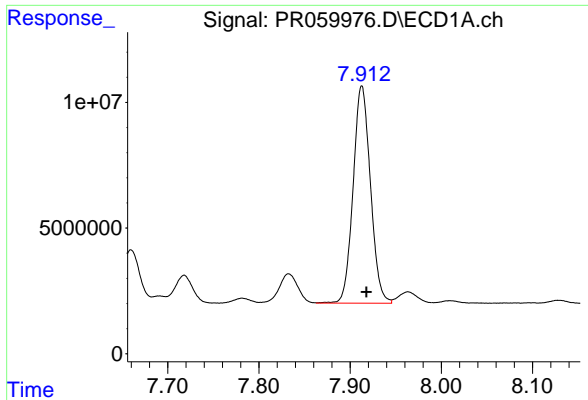
#34 AR-1260-4

R.T.: 7.574 min
Delta R.T.: -0.003 min
Response: 65064179
Conc: 527.45 ng/ml

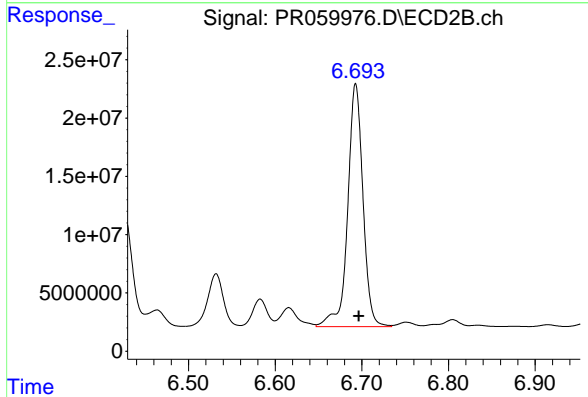


#34 AR-1260-4

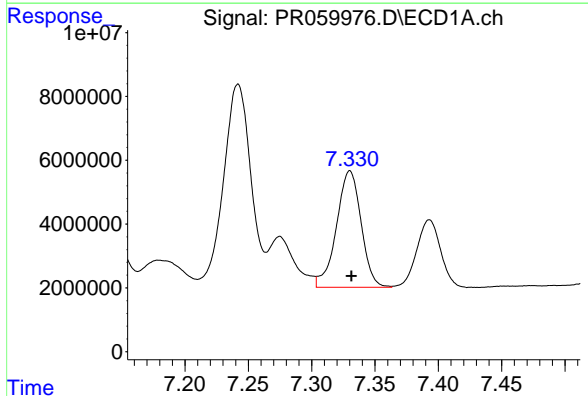
R.T.: 6.427 min
Delta R.T.: -0.004 min
Response: 111816156
Conc: 531.62 ng/ml



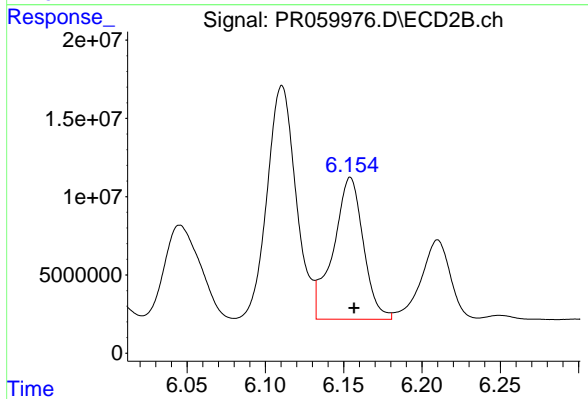
#35 AR-1260-5
R.T.: 7.913 min
Delta R.T.: -0.005 min
Response: 114117427
Conc: 495.94 ng/ml



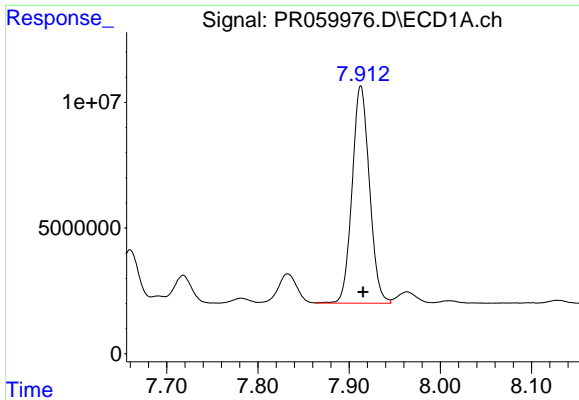
#35 AR-1260-5
R.T.: 6.693 min
Delta R.T.: -0.003 min
Response: 254811106
Conc: 536.10 ng/ml



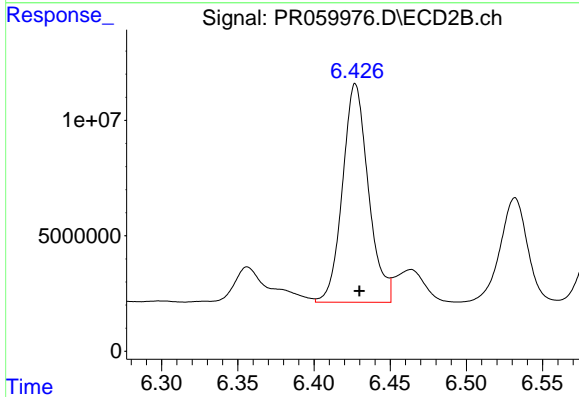
#36 AR-1262-1
R.T.: 7.330 min
Delta R.T.: -0.001 min
Response: 49520721
Conc: 322.44 ng/ml



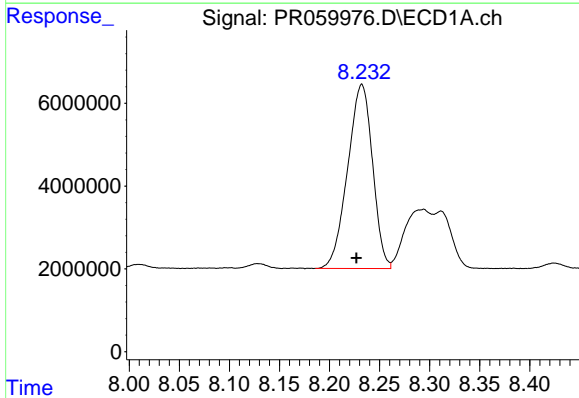
#36 AR-1262-1
R.T.: 6.154 min
Delta R.T.: -0.002 min
Response: 121040006
Conc: 396.05 ng/ml



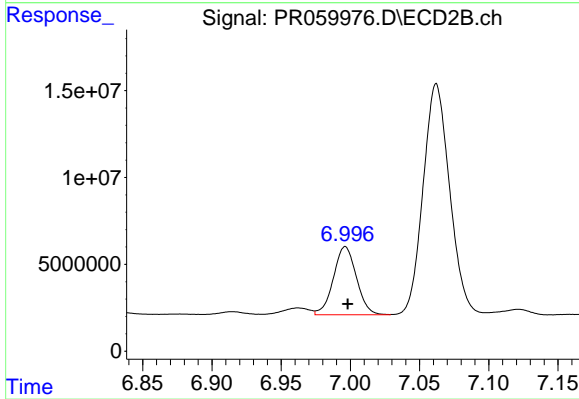
#37 AR-1262-2
R.T.: 7.913 min
Delta R.T.: -0.003 min
Response: 114117427
Conc: 439.87 ng/ml



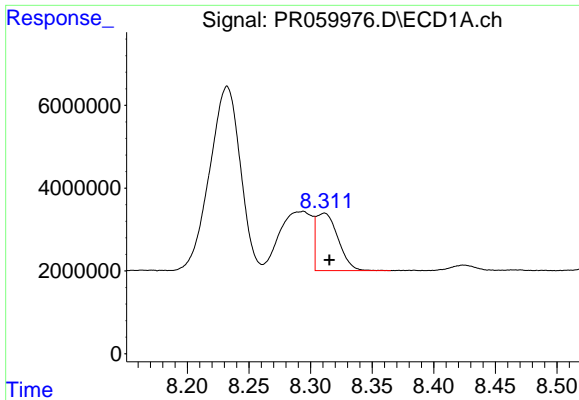
#37 AR-1262-2
R.T.: 6.427 min
Delta R.T.: -0.003 min
Response: 111816156
Conc: 411.30 ng/ml



#38 AR-1262-3
R.T.: 8.232 min
Delta R.T.: 0.005 min
Response: 76858379
Conc: 409.18 ng/ml



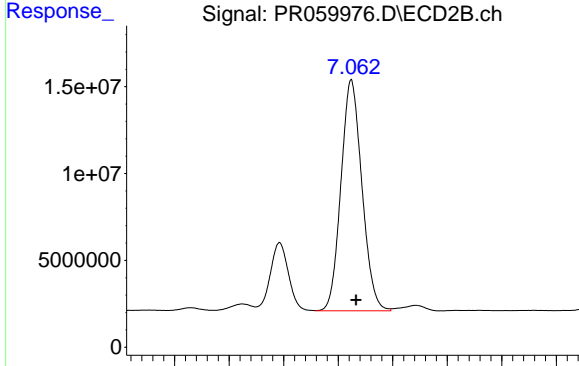
#38 AR-1262-3
R.T.: 6.996 min
Delta R.T.: -0.002 min
Response: 45413472
Conc: 221.45 ng/ml



#39 AR-1262-4

R.T.: 8.311 min
Delta R.T.: -0.004 min
Response: 17118395
Conc: 118.00 ng/ml

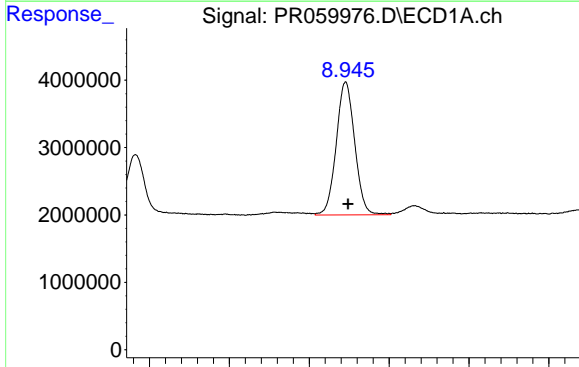
Time



#39 AR-1262-4

R.T.: 7.062 min
Delta R.T.: -0.004 min
Response: 177760113
Conc: 463.79 ng/ml

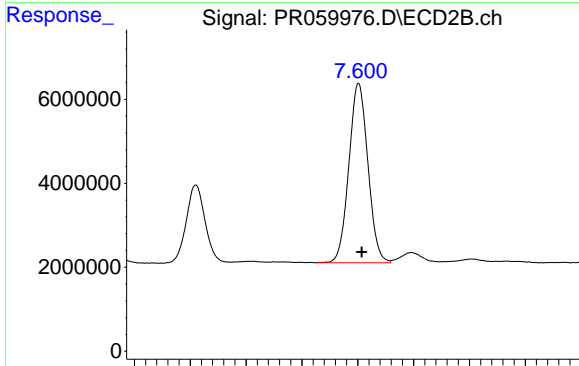
Time



#40 AR-1262-5

R.T.: 8.946 min
Delta R.T.: -0.003 min
Response: 31723854
Conc: 301.52 ng/ml

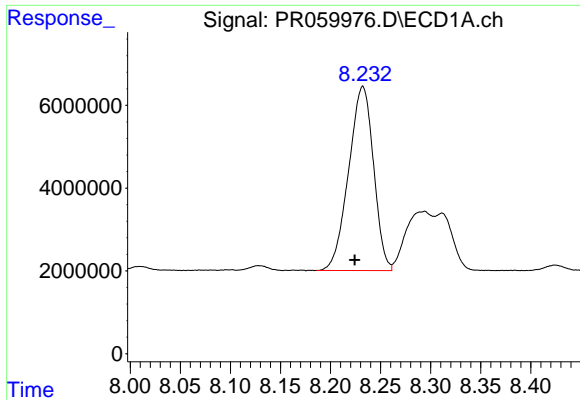
Time



#40 AR-1262-5

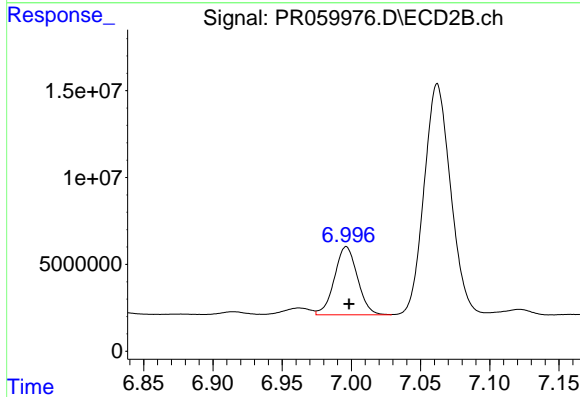
R.T.: 7.601 min
Delta R.T.: -0.003 min
Response: 50659397
Conc: 299.36 ng/ml

Time



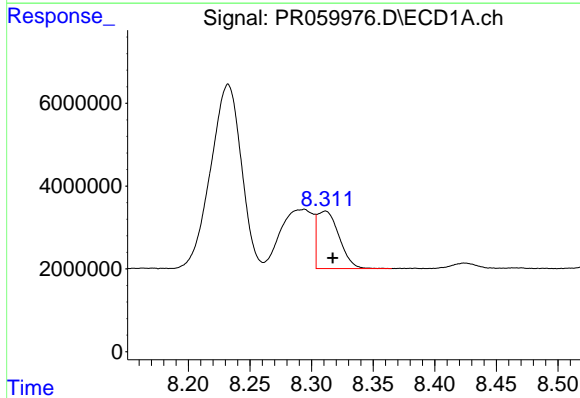
#41 AR-1268-1

R.T.: 8.232 min
Delta R.T.: 0.008 min
Response: 76858379
Conc: 173.81 ng/ml



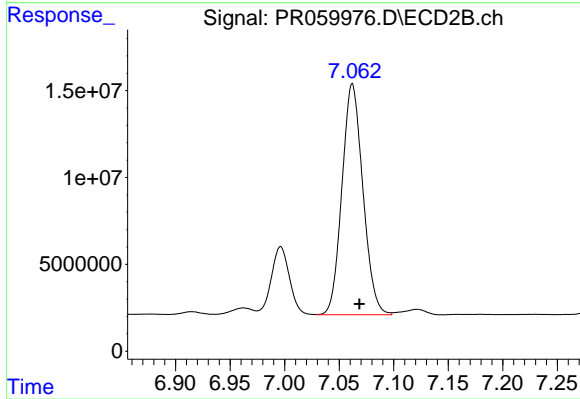
#41 AR-1268-1

R.T.: 6.996 min
Delta R.T.: -0.002 min
Response: 45413472
Conc: 51.69 ng/ml



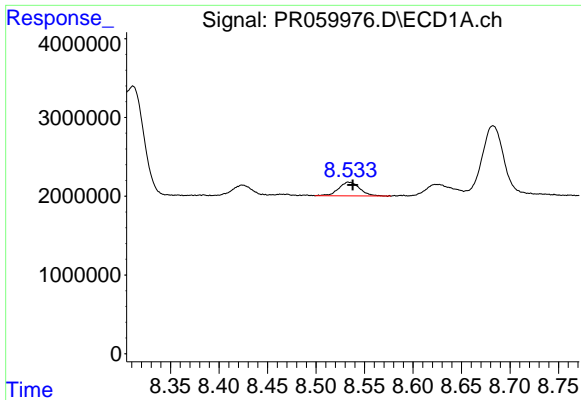
#42 AR-1268-2

R.T.: 8.311 min
Delta R.T.: -0.006 min
Response: 17118395
Conc: 42.80 ng/ml



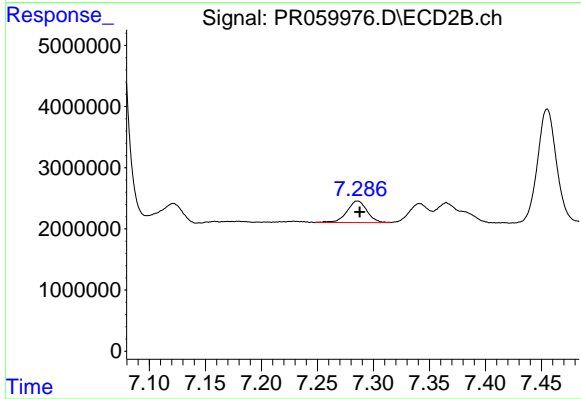
#42 AR-1268-2

R.T.: 7.062 min
Delta R.T.: -0.006 min
Response: 177760113
Conc: 225.37 ng/ml



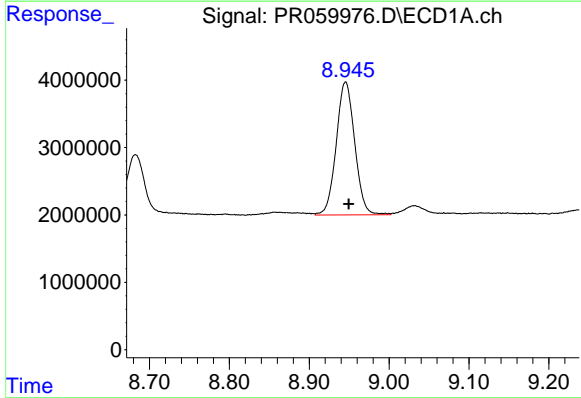
#43 AR-1268-3

R.T.: 8.534 min
Delta R.T.: -0.004 min
Response: 2638435
Conc: 7.32 ng/ml



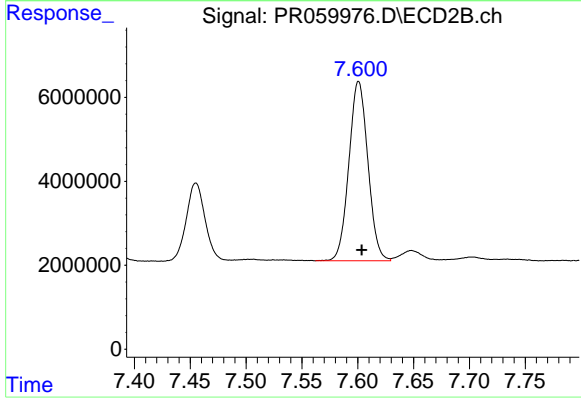
#43 AR-1268-3

R.T.: 7.286 min
Delta R.T.: -0.002 min
Response: 4426523
Conc: 6.37 ng/ml



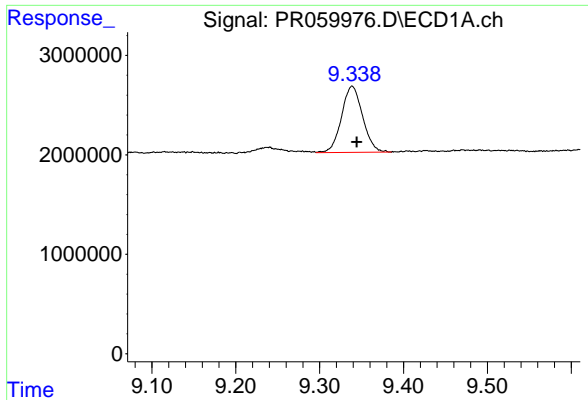
#44 AR-1268-4

R.T.: 8.946 min
Delta R.T.: -0.004 min
Response: 31723854
Conc: 201.16 ng/ml



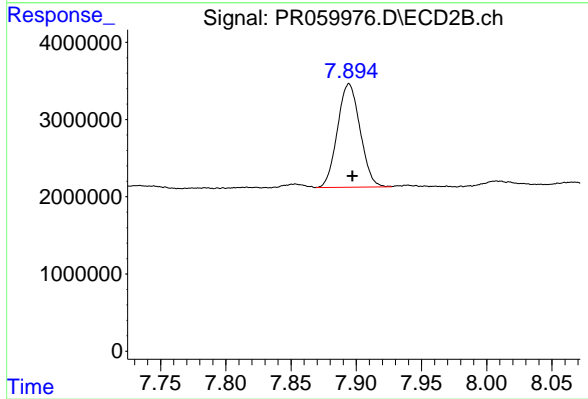
#44 AR-1268-4

R.T.: 7.601 min
Delta R.T.: -0.003 min
Response: 50659397
Conc: 191.15 ng/ml



#45 AR-1268-5

R.T.: 9.339 min
Delta R.T.: -0.005 min
Response: 11636902
Conc: 10.09 ng/ml



#45 AR-1268-5

R.T.: 7.894 min
Delta R.T.: -0.003 min
Response: 16156476
Conc: 7.71 ng/ml