

Data Path : Z:\pestpcbsrv\HPCHEM1\ECD_R\Data\PR030719\
 Data File : PR035974.D
 Signal(s) : Signal #1: ECD1A.ch Signal #2: ECD2B.ch
 Acq On : 07 Mar 2019 16:28
 Operator : SM\SJ
 Sample : K1760-07
 Misc :
 ALS Vial : 13 Sample Multiplier: 1

Instrument :
 ECD_R
 ClientSampled :
 Z2-9

Integration File signal 1: autoint1.e
 Integration File signal 2: autoint2.e
 Quant Time: Mar 07 23:44:50 2019
 Quant Method : Z:\pestpcbsrv\HPCHEM1\ECD_R\Method\PR030119.M
 Quant Title : GC EXTRACTABLES
 QLast Update : Thu Mar 07 10:54:32 2019
 Response via : Initial Calibration
 Integrator: ChemStation

Volume Inj. : 2 µl
 Signal #1 Phase : ZB-MR1 Signal #2 Phase: ZB-MR2
 Signal #1 Info : 30Mx0.32mmx 0.50µ Signal #2 Info : 30M x 0.32mm x 0.25µm

Compound	RT#1	RT#2	Resp#1	Resp#2	ng/ml	ng/ml
System Monitoring Compounds						
1) SA Tetrachlo...	4.410	3.485	30871282	98614420	19.425	18.777
2) SA Decachlor...	10.071	8.354	16354053	57891885	10.226	8.820
Target Compounds						
3) L1 AR-1016-1	0.000	4.540	0	1210528	N.D.	6.506 #
4) L1 AR-1016-2	0.000	4.554	0	1598755	N.D.	5.514 #
7) L1 AR-1016-5	0.000	4.975	0	1738213	N.D.	10.720 #
9) L2 AR-1221-2	0.000	3.776	0	1753990	N.D.	34.259 #
12) L3 AR-1232-2	0.000	4.554	0	1598755	N.D.	13.630 #
15) L3 AR-1232-5	0.000	4.975	0	1738213	N.D.	29.755 #
16) L4 AR-1242-1	0.000	4.540	0	1210528	N.D.	8.136 #
17) L4 AR-1242-2	0.000	4.554	0	1598755	N.D.	6.837 #
20) L4 AR-1242-5	0.000	5.319	0	2108197	N.D.	11.945 #
21) L5 AR-1248-1	0.000	4.540	0	1210528	N.D.	10.055 #
24) L5 AR-1248-4	0.000	4.975	0	1738213	N.D.	7.434 #
25) L5 AR-1248-5	0.000	5.319	0	2108197	N.D.	8.911 #
26) L6 AR-1254-1	0.000	5.319	0	2108197	N.D.	7.108 #
27) L6 AR-1254-2	0.000	5.463	0	1173046	N.D.	4.500 #
28) L6 AR-1254-3	7.016	5.872	1361791	2697158	13.079	6.082 #
29) L6 AR-1254-4	0.000	6.079	0	1570163	N.D.	5.010 #
30) L6 AR-1254-5	0.000	6.492	0	4863487	N.D.	11.618 #
31) L7 AR-1260-1	0.000	5.985	0	2765208	N.D.	7.593 #
32) L7 AR-1260-2	7.416	6.167	1460588	7465942	12.691	14.293
33) L7 AR-1260-3	0.000	6.320	0	3094591	N.D.	7.070 #
34) L7 AR-1260-4	0.000	6.782	0	2418711	N.D.	7.812 #
35) L7 AR-1260-5	0.000	7.024	0	5965588	N.D.	6.605 #
36) L8 AR-1262-1	0.000	6.584	0	2404237	N.D.	11.938 #
37) L8 AR-1262-2	0.000	7.024	0	5965588	N.D.	5.725 #
38) L8 AR-1262-3	0.000	7.303	0	1531024	N.D.	3.740 #
39) L8 AR-1262-4	0.000	7.366	0	4673541	N.D.	6.464 #
40) L8 AR-1262-5	0.000	7.857	0	1678100	N.D.	5.108 #
41) L9 AR-1268-1	0.000	7.303	0	1531024	N.D.	1.211 #
42) L9 AR-1268-2	0.000	7.366	0	4673541	N.D.	4.122 #
43) L9 AR-1268-3	0.000	7.565	0	1592171	N.D.	1.623 #
44) L9 AR-1268-4	0.000	7.857	0	1678100	N.D.	4.691 #
45) L9 AR-1268-5	0.000	8.126	0	2841207	N.D.	1.068 #

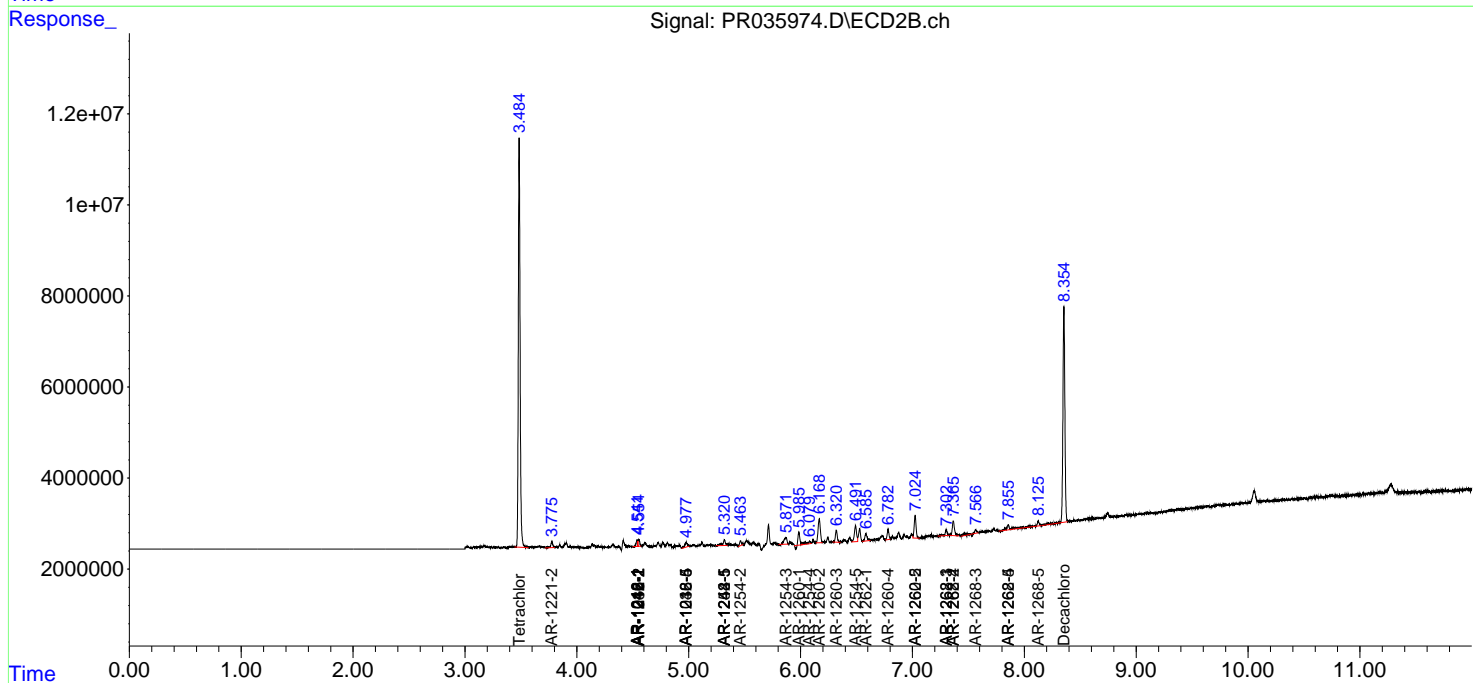
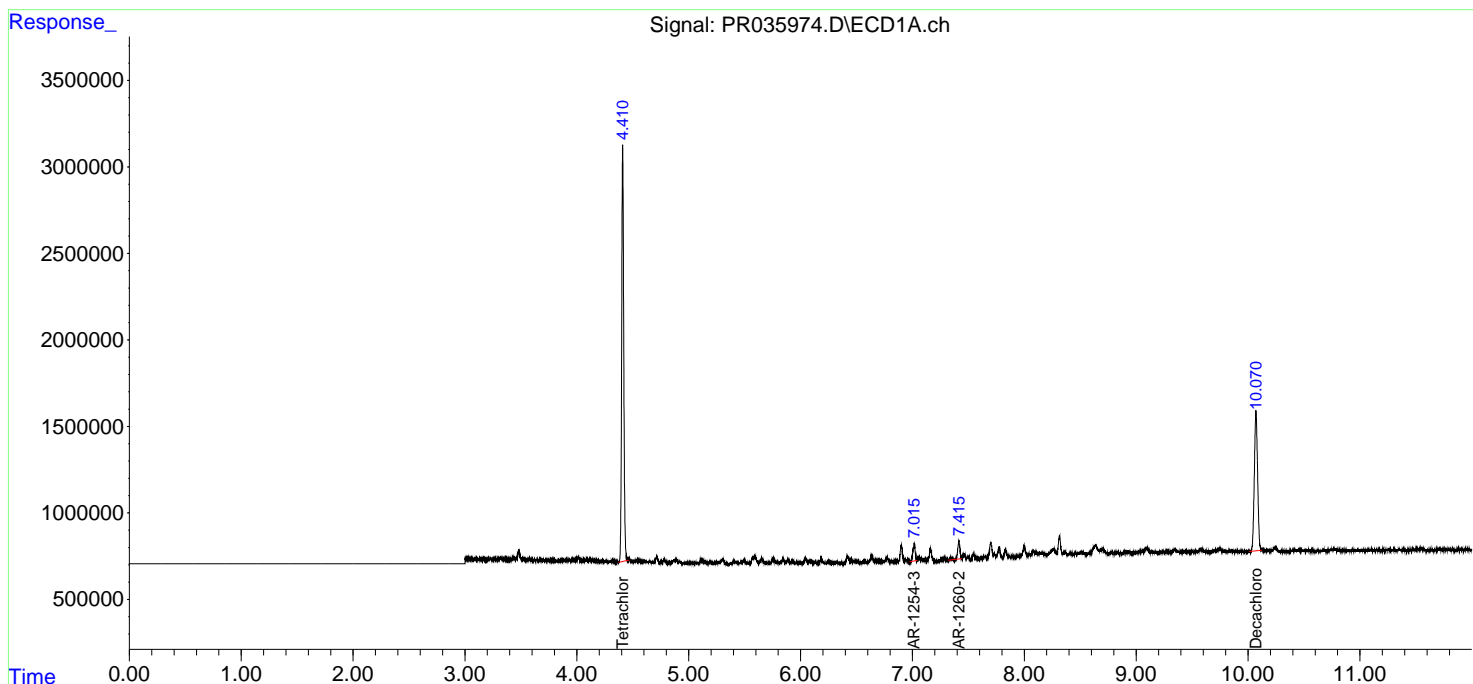
(f)=RT Delta > 1/2 Window (#)=Amounts differ by > 25% (m)=manual int.

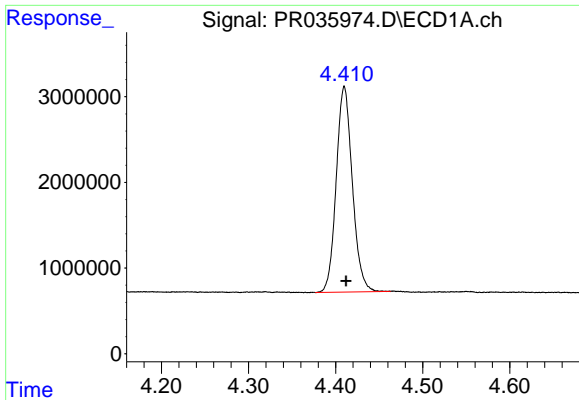
Data Path : Z:\pestpcbsrv\HPCHEM1\ECD_R\Data\PR030719\
 Data File : PR035974.D
 Signal(s) : Signal #1: ECD1A.ch Signal #2: ECD2B.ch
 Acq On : 07 Mar 2019 16:28
 Operator : SM\SJ
 Sample : K1760-07
 Misc :
 ALS Vial : 13 Sample Multiplier: 1

Instrument :
 ECD_R
 ClientSampled :
 Z2-9

Integration File signal 1: autoint1.e
 Integration File signal 2: autoint2.e
 Quant Time: Mar 07 23:44:50 2019
 Quant Method : Z:\pestpcbsrv\HPCHEM1\ECD_R\Method\PR030119.M
 Quant Title : GC EXTRACTABLES
 QLast Update : Thu Mar 07 10:54:32 2019
 Response via : Initial Calibration
 Integrator: ChemStation

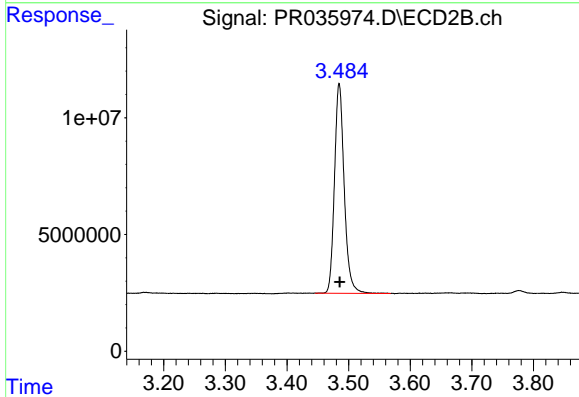
Volume Inj. : 2 µl
 Signal #1 Phase : ZB-MR1 Signal #2 Phase: ZB-MR2
 Signal #1 Info : 30Mx0.32mmx 0.50µ Signal #2 Info : 30M x 0.32mm x 0.25µm



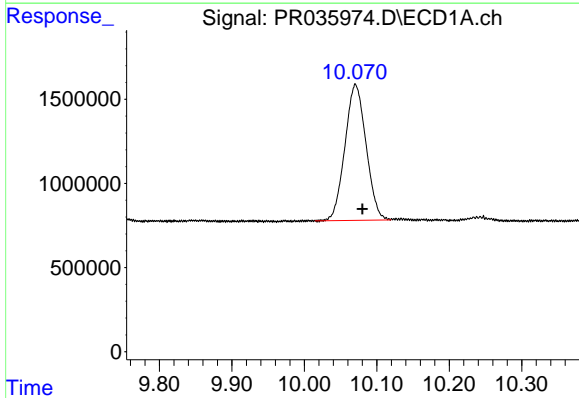


#1 Tetrachloro-m-xylene
R.T.: 4.410 min
Delta R.T.: -0.002 min
Response: 30871282
Conc: 19.42 ng/ml

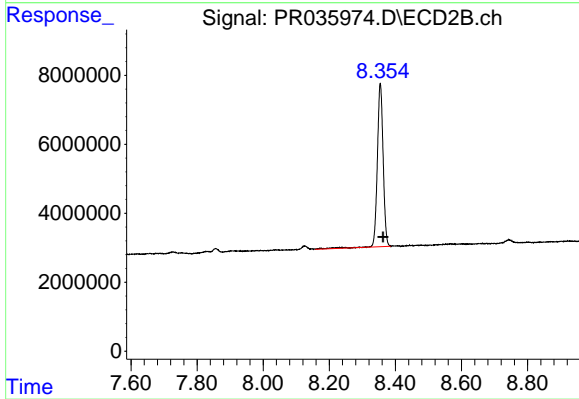
Instrument :
ECD_R
ClientSampled :
Z2-9



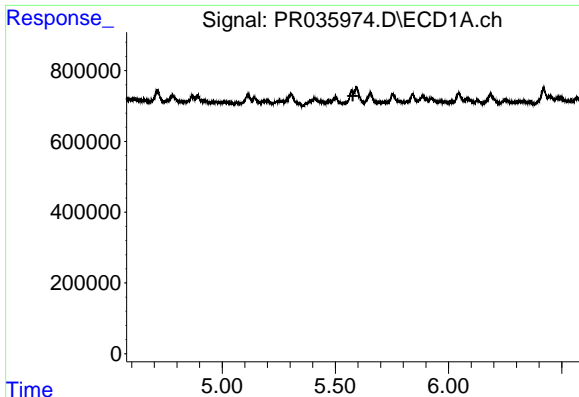
#1 Tetrachloro-m-xylene
R.T.: 3.485 min
Delta R.T.: 0.000 min
Response: 98614420
Conc: 18.78 ng/ml



#2 Decachlorobiphenyl
R.T.: 10.071 min
Delta R.T.: -0.010 min
Response: 16354053
Conc: 10.23 ng/ml



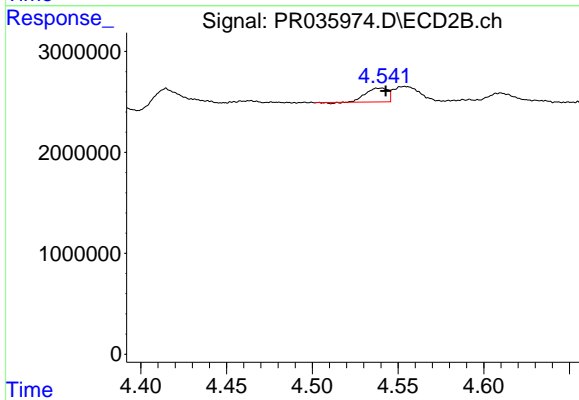
#2 Decachlorobiphenyl
R.T.: 8.354 min
Delta R.T.: -0.009 min
Response: 57891885
Conc: 8.82 ng/ml



#3 AR-1016-1

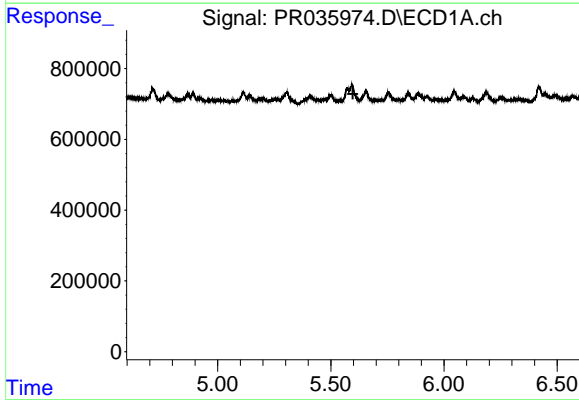
R.T.: 0.000 min
 Exp R.T. : 5.577 min
 Response: 0
 Conc: N.D.

Instrument :
 ECD_R
 ClientSampleId :
 Z2-9



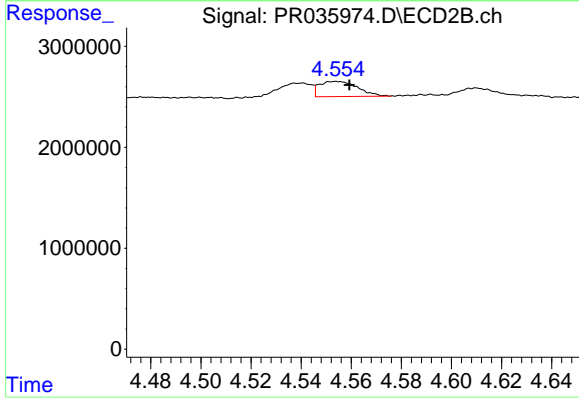
#3 AR-1016-1

R.T.: 4.540 min
 Delta R.T.: -0.003 min
 Response: 1210528
 Conc: 6.51 ng/ml



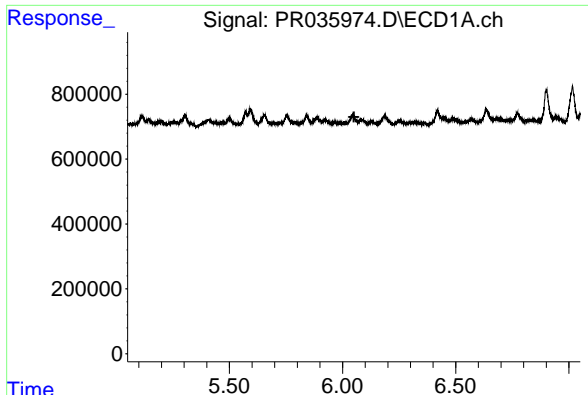
#4 AR-1016-2

R.T.: 0.000 min
 Exp R.T. : 5.598 min
 Response: 0
 Conc: N.D.



#4 AR-1016-2

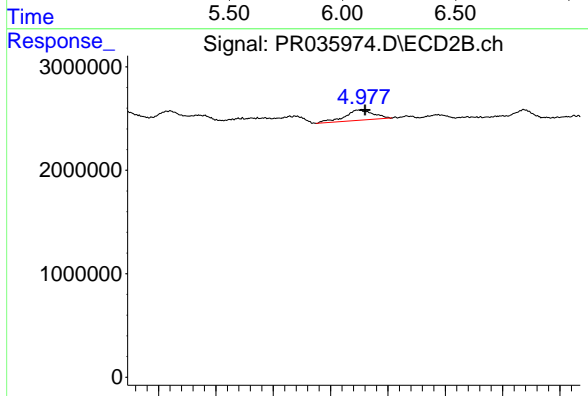
R.T.: 4.554 min
 Delta R.T.: -0.005 min
 Response: 1598755
 Conc: 5.51 ng/ml



#7 AR-1016-5

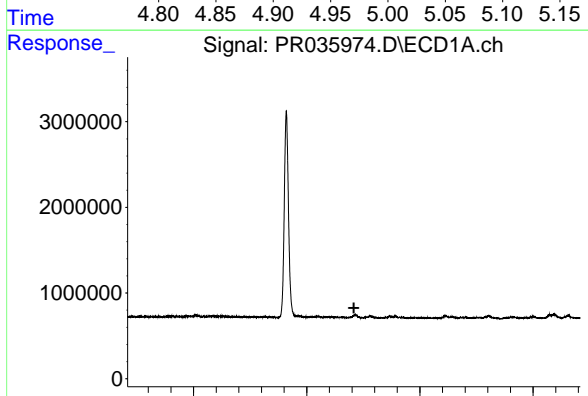
R.T.: 0.000 min
 Exp R.T.: 6.050 min
 Response: 0
 Conc: N.D.

Instrument :
 ECD_R
 ClientSampled :
 Z2-9



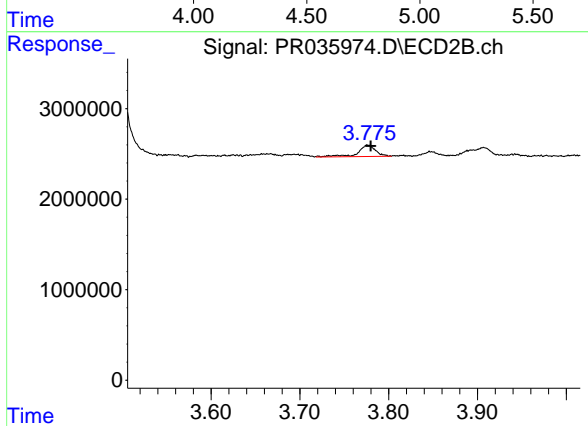
#7 AR-1016-5

R.T.: 4.975 min
 Delta R.T.: -0.005 min
 Response: 1738213
 Conc: 10.72 ng/ml



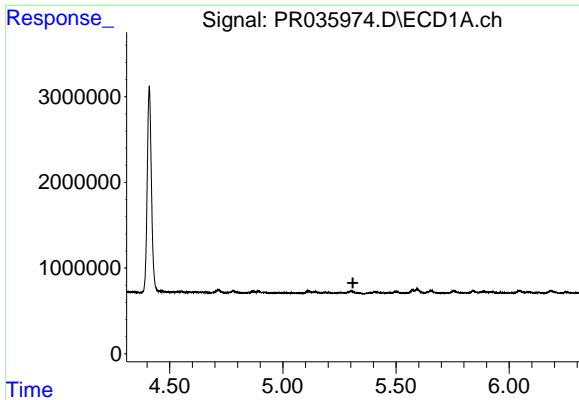
#9 AR-1221-2

R.T.: 0.000 min
 Exp R.T.: 4.709 min
 Response: 0
 Conc: N.D.



#9 AR-1221-2

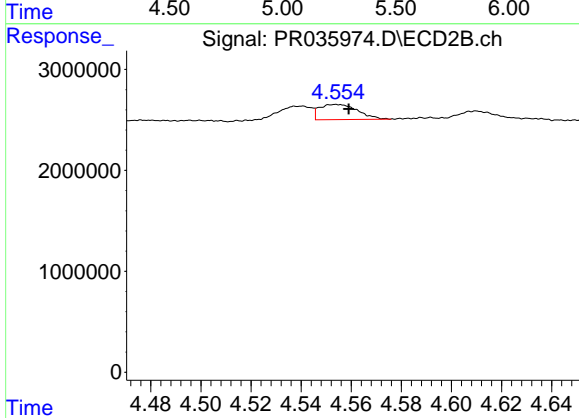
R.T.: 3.776 min
 Delta R.T.: -0.003 min
 Response: 1753990
 Conc: 34.26 ng/ml



#12 AR-1232-2

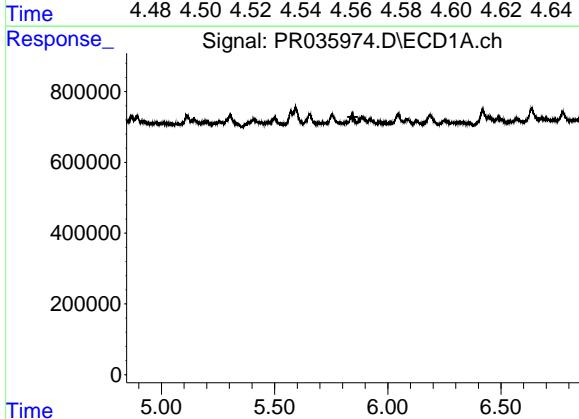
R.T.: 0.000 min
 Exp R.T.: 5.310 min
 Response: 0
 Conc: N.D.

Instrument :
 ECD_R
 ClientSampled :
 Z2-9



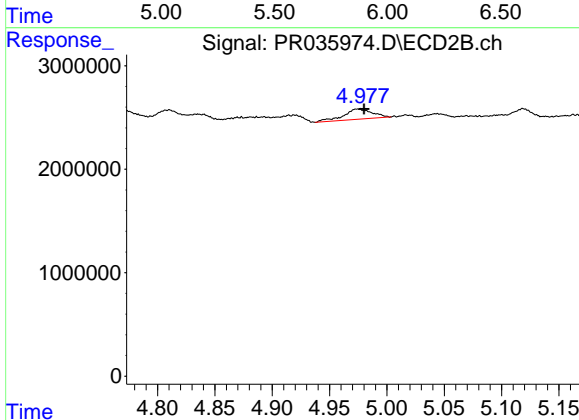
#12 AR-1232-2

R.T.: 4.554 min
 Delta R.T.: -0.005 min
 Response: 1598755
 Conc: 13.63 ng/ml



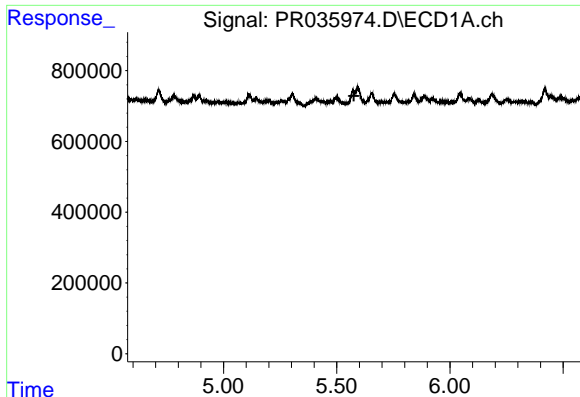
#15 AR-1232-5

R.T.: 0.000 min
 Exp R.T.: 5.846 min
 Response: 0
 Conc: N.D.



#15 AR-1232-5

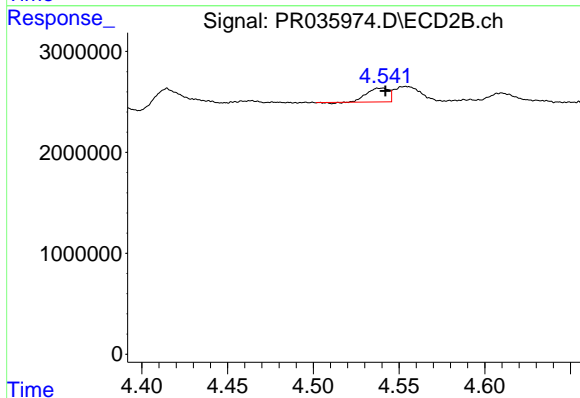
R.T.: 4.975 min
 Delta R.T.: -0.005 min
 Response: 1738213
 Conc: 29.75 ng/ml



#16 AR-1242-1

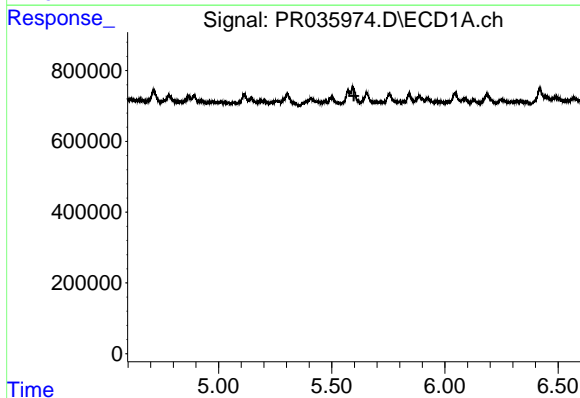
R.T.: 0.000 min
 Exp R.T. : 5.576 min
 Response: 0
 Conc: N.D.

Instrument :
 ECD_R
 ClientSampleId :
 Z2-9



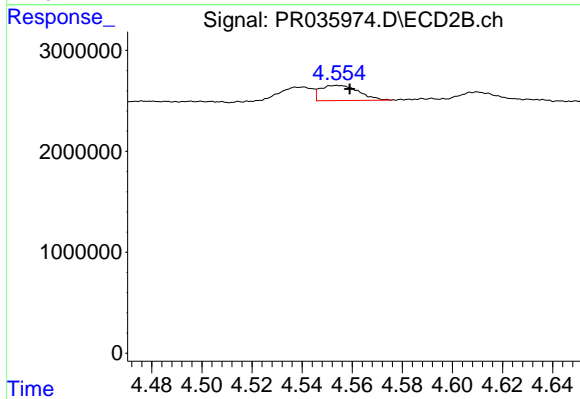
#16 AR-1242-1

R.T.: 4.540 min
 Delta R.T.: -0.003 min
 Response: 1210528
 Conc: 8.14 ng/ml



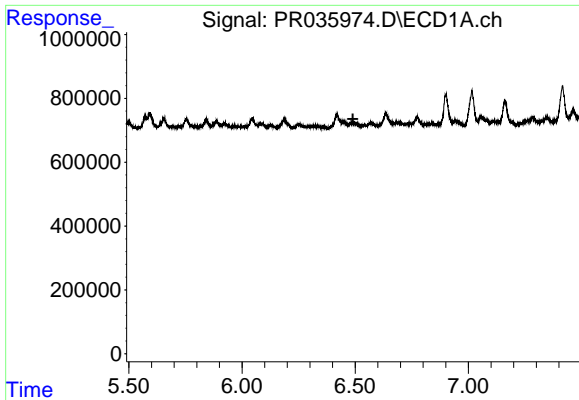
#17 AR-1242-2

R.T.: 0.000 min
 Exp R.T. : 5.598 min
 Response: 0
 Conc: N.D.



#17 AR-1242-2

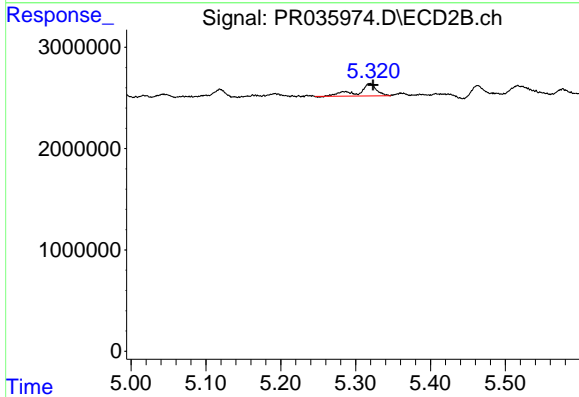
R.T.: 4.554 min
 Delta R.T.: -0.005 min
 Response: 1598755
 Conc: 6.84 ng/ml



#20 AR-1242-5

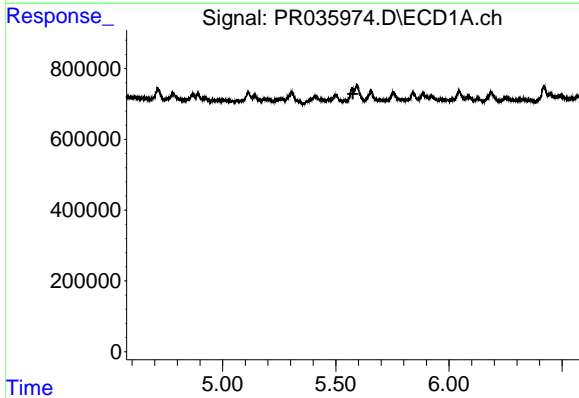
R.T.: 0.000 min
 Exp R.T.: 6.490 min
 Response: 0
 Conc: N.D.

Instrument :
 ECD_R
 ClientSampled :
 Z2-9



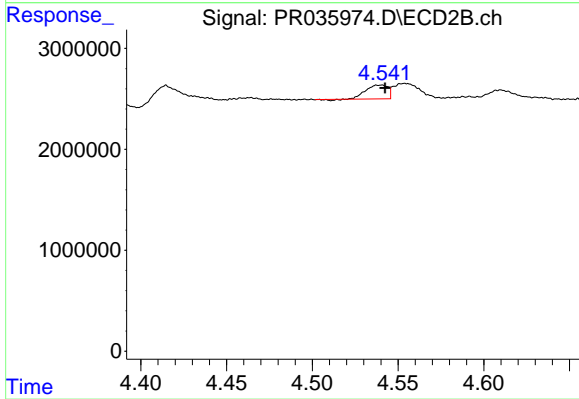
#20 AR-1242-5

R.T.: 5.319 min
 Delta R.T.: -0.005 min
 Response: 2108197
 Conc: 11.95 ng/ml



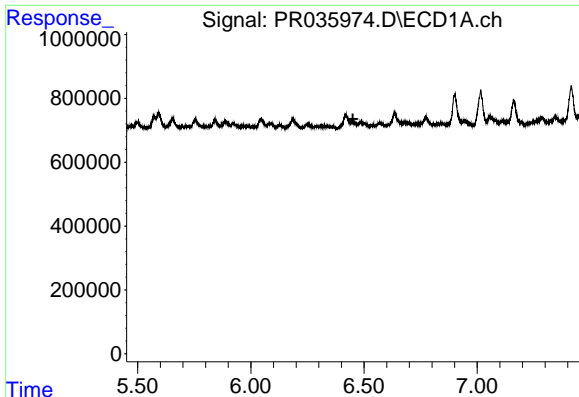
#21 AR-1248-1

R.T.: 0.000 min
 Exp R.T.: 5.575 min
 Response: 0
 Conc: N.D.



#21 AR-1248-1

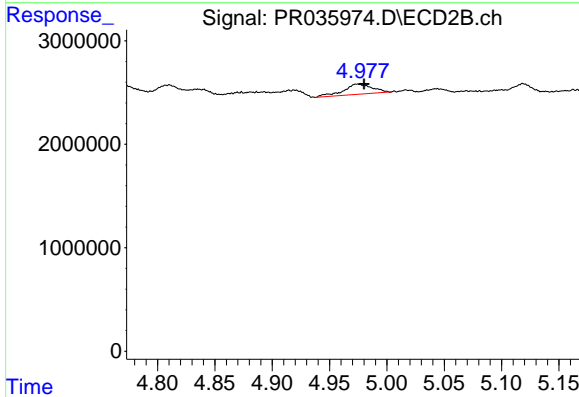
R.T.: 4.540 min
 Delta R.T.: -0.003 min
 Response: 1210528
 Conc: 10.06 ng/ml



#24 AR-1248-4

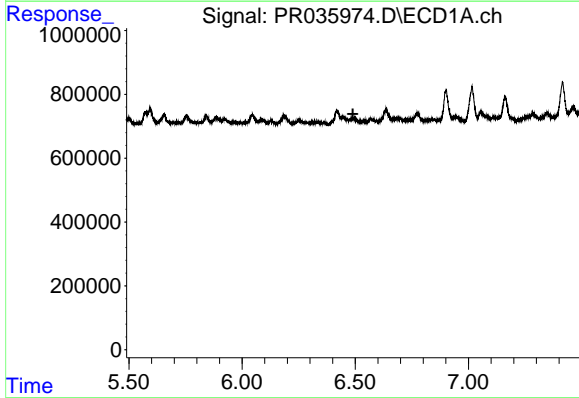
R.T.: 0.000 min
 Exp R.T.: 6.451 min
 Response: 0
 Conc: N.D.

Instrument :
 ECD_R
 ClientSampleId :
 Z2-9



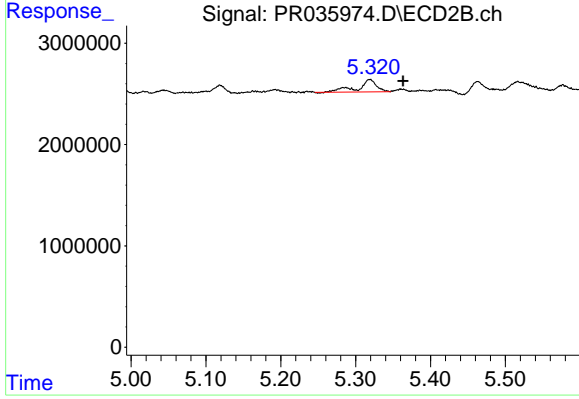
#24 AR-1248-4

R.T.: 4.975 min
 Delta R.T.: -0.005 min
 Response: 1738213
 Conc: 7.43 ng/ml



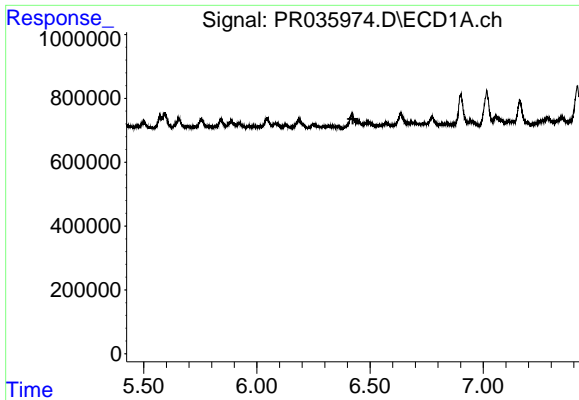
#25 AR-1248-5

R.T.: 0.000 min
 Exp R.T.: 6.489 min
 Response: 0
 Conc: N.D.



#25 AR-1248-5

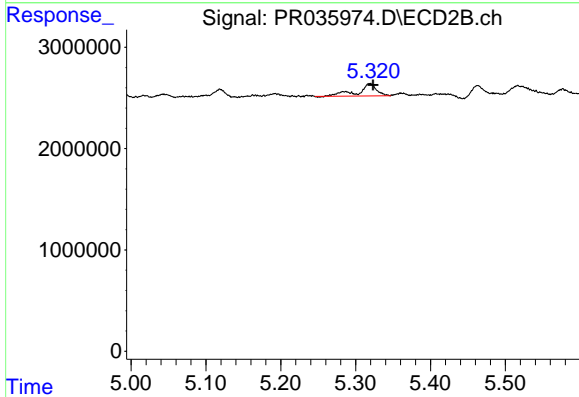
R.T.: 5.319 min
 Delta R.T.: -0.045 min
 Response: 2108197
 Conc: 8.91 ng/ml



#26 AR-1254-1

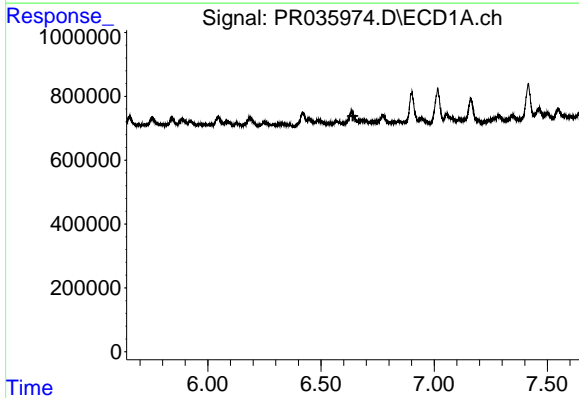
R.T.: 0.000 min
 Exp R.T.: 6.424 min
 Response: 0
 Conc: N.D.

Instrument :
 ECD_R
 ClientSampleId :
 Z2-9



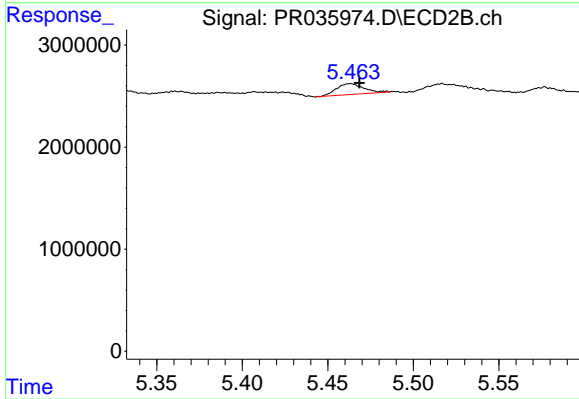
#26 AR-1254-1

R.T.: 5.319 min
 Delta R.T.: -0.005 min
 Response: 2108197
 Conc: 7.11 ng/ml



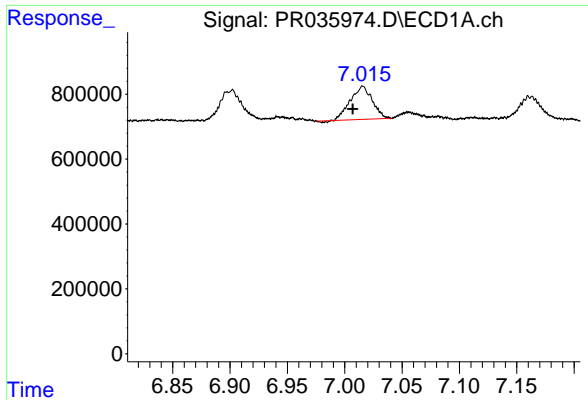
#27 AR-1254-2

R.T.: 0.000 min
 Exp R.T.: 6.641 min
 Response: 0
 Conc: N.D.



#27 AR-1254-2

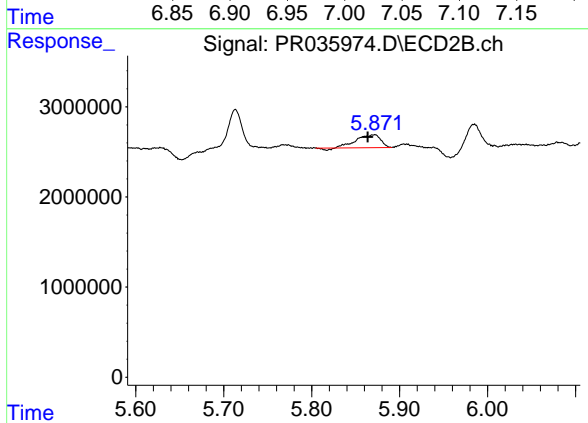
R.T.: 5.463 min
 Delta R.T.: -0.005 min
 Response: 1173046
 Conc: 4.50 ng/ml



#28 AR-1254-3

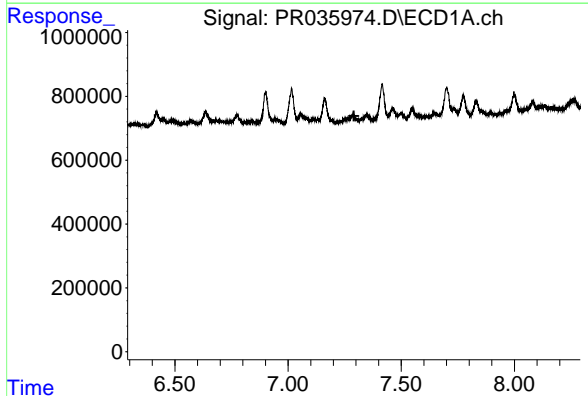
R.T.: 7.016 min
 Delta R.T.: 0.009 min
 Response: 1361791
 Conc: 13.08 ng/ml

Instrument :
 ECD_R
 ClientSampled :
 Z2-9



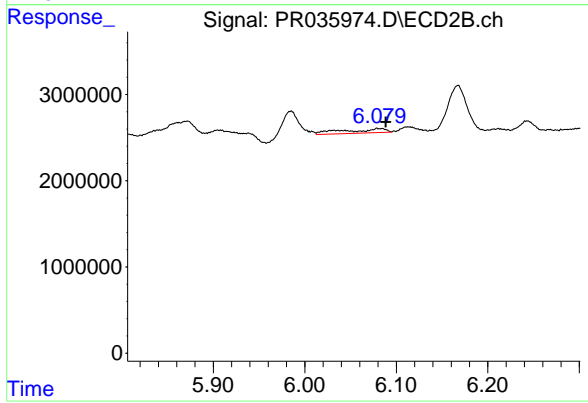
#28 AR-1254-3

R.T.: 5.872 min
 Delta R.T.: 0.008 min
 Response: 2697158
 Conc: 6.08 ng/ml



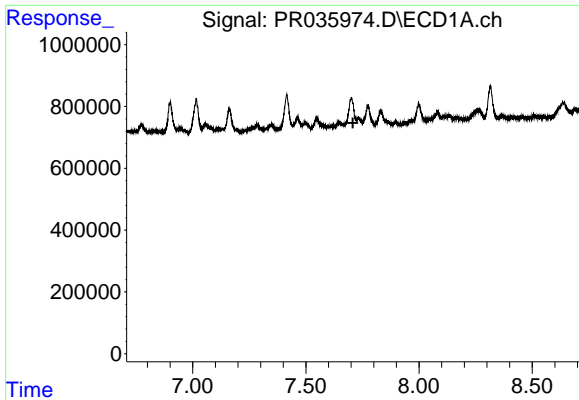
#29 AR-1254-4

R.T.: 0.000 min
 Exp R.T. : 7.291 min
 Response: 0
 Conc: N.D.



#29 AR-1254-4

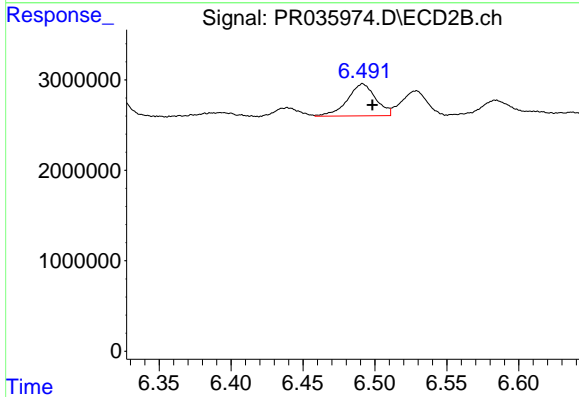
R.T.: 6.079 min
 Delta R.T.: -0.009 min
 Response: 1570163
 Conc: 5.01 ng/ml



#30 AR-1254-5

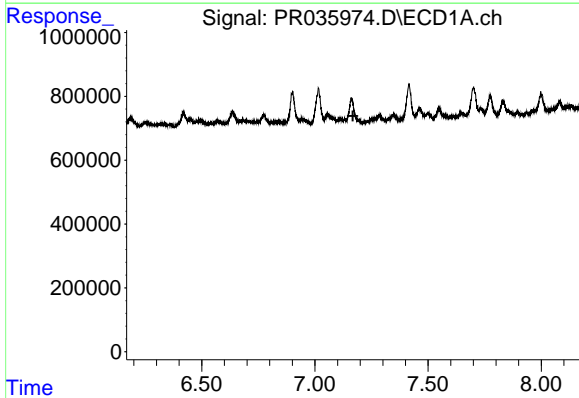
R.T.: 0.000 min
 Exp R.T. : 7.708 min
 Response: 0
 Conc: N.D.

Instrument :
 ECD_R
 ClientSampleId :
 Z2-9



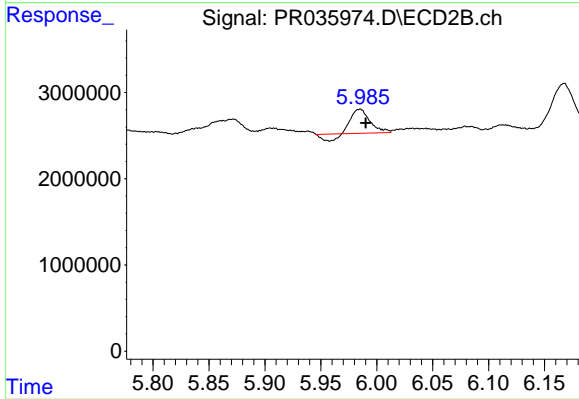
#30 AR-1254-5

R.T.: 6.492 min
 Delta R.T.: -0.007 min
 Response: 4863487
 Conc: 11.62 ng/ml



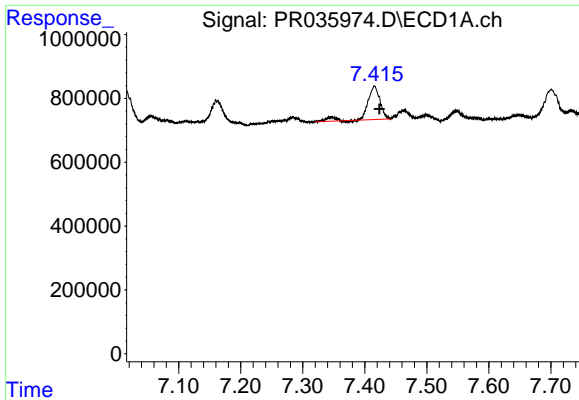
#31 AR-1260-1

R.T.: 0.000 min
 Exp R.T. : 7.168 min
 Response: 0
 Conc: N.D.



#31 AR-1260-1

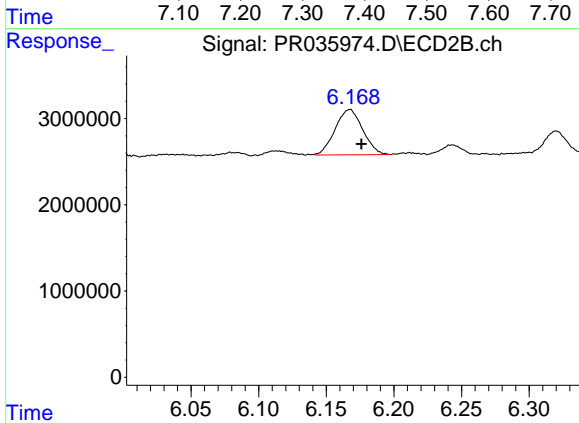
R.T.: 5.985 min
 Delta R.T.: -0.005 min
 Response: 2765208
 Conc: 7.59 ng/ml



#32 AR-1260-2

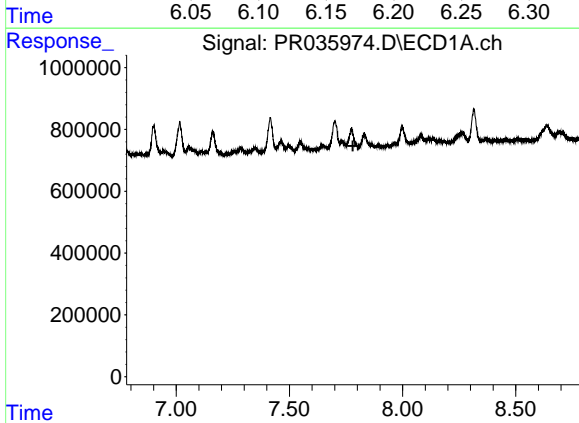
R.T.: 7.416 min
 Delta R.T.: -0.008 min
 Response: 1460588
 Conc: 12.69 ng/ml

Instrument :
 ECD_R
 ClientSampleId :
 Z2-9



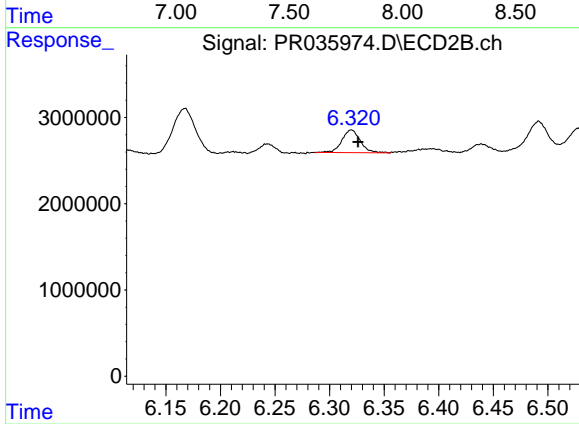
#32 AR-1260-2

R.T.: 6.167 min
 Delta R.T.: -0.009 min
 Response: 7465942
 Conc: 14.29 ng/ml



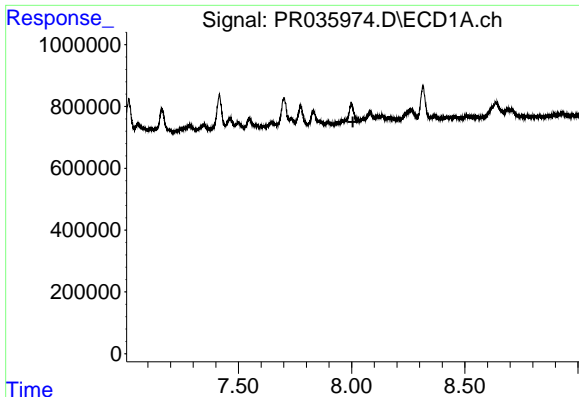
#33 AR-1260-3

R.T.: 0.000 min
 Exp R.T. : 7.781 min
 Response: 0
 Conc: N.D.



#33 AR-1260-3

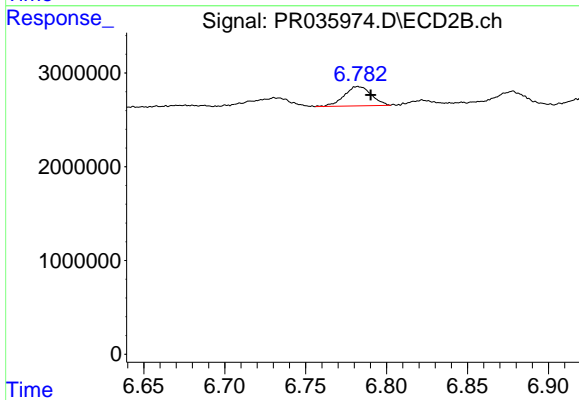
R.T.: 6.320 min
 Delta R.T.: -0.006 min
 Response: 3094591
 Conc: 7.07 ng/ml



#34 AR-1260-4

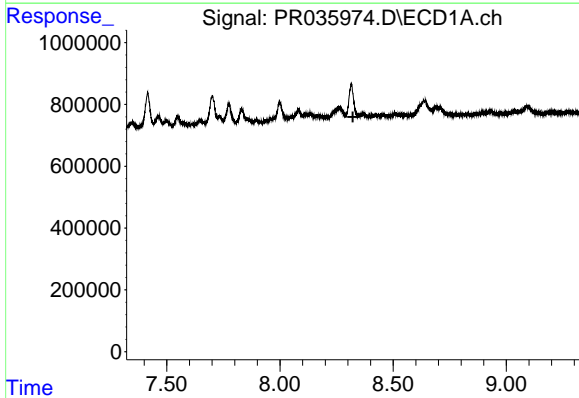
R.T.: 0.000 min
 Exp R.T. : 8.006 min
 Response: 0
 Conc: N.D.

Instrument :
 ECD_R
 ClientSampleId :
 Z2-9



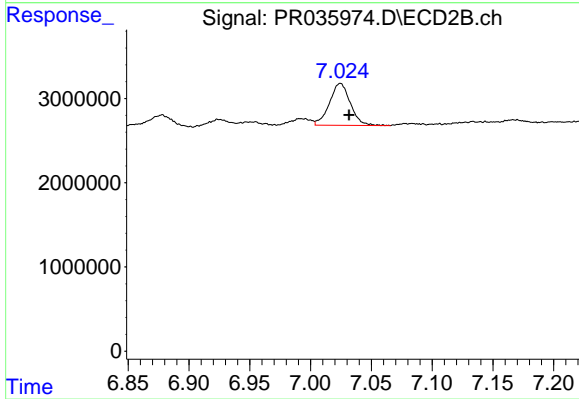
#34 AR-1260-4

R.T.: 6.782 min
 Delta R.T.: -0.008 min
 Response: 2418711
 Conc: 7.81 ng/ml



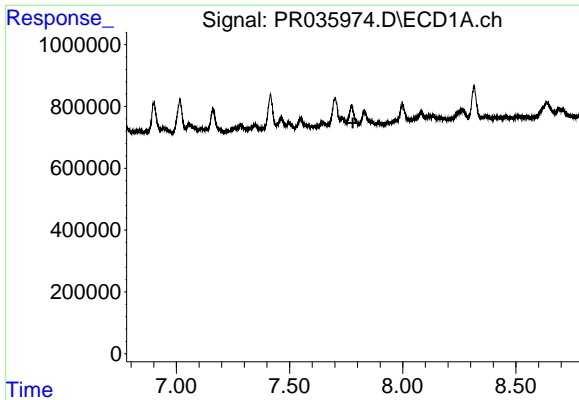
#35 AR-1260-5

R.T.: 0.000 min
 Exp R.T. : 8.322 min
 Response: 0
 Conc: N.D.



#35 AR-1260-5

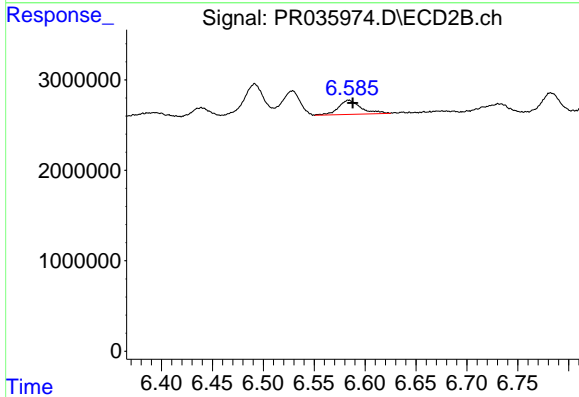
R.T.: 7.024 min
 Delta R.T.: -0.007 min
 Response: 5965588
 Conc: 6.60 ng/ml



#36 AR-1262-1

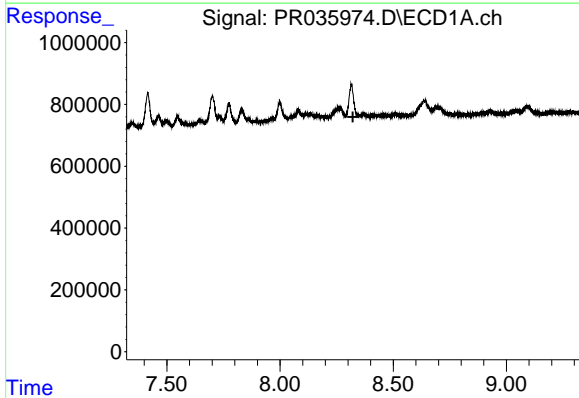
R.T.: 0.000 min
Exp R.T. : 7.780 min
Response: 0
Conc: N.D.

Instrument :
ECD_R
ClientSampleId :
Z2-9



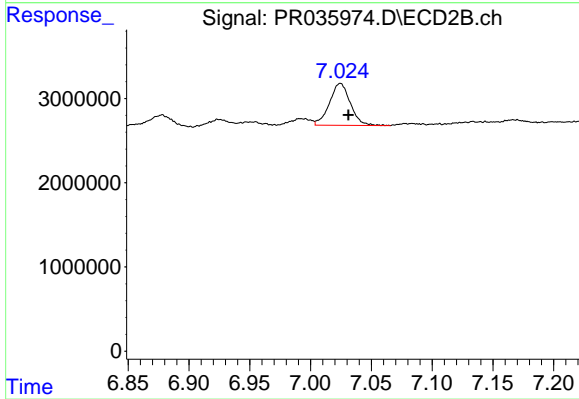
#36 AR-1262-1

R.T.: 6.584 min
Delta R.T.: -0.004 min
Response: 2404237
Conc: 11.94 ng/ml



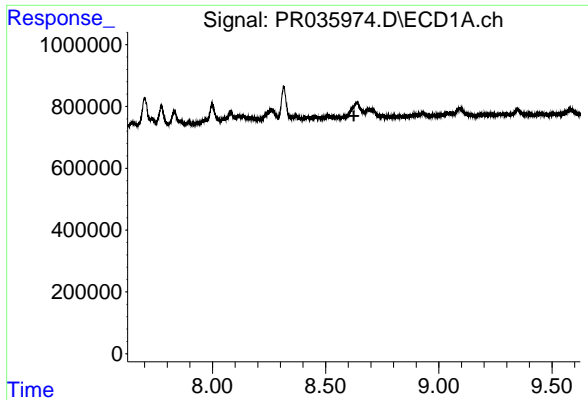
#37 AR-1262-2

R.T.: 0.000 min
Exp R.T. : 8.322 min
Response: 0
Conc: N.D.



#37 AR-1262-2

R.T.: 7.024 min
Delta R.T.: -0.007 min
Response: 5965588
Conc: 5.72 ng/ml

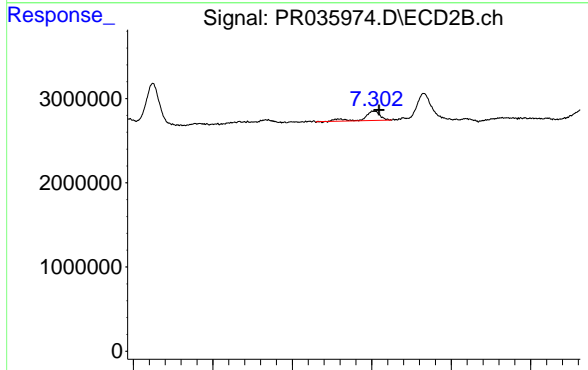


#38 AR-1262-3

R.T.: 0.000 min
 Exp R.T. : 8.625 min
 Response: 0
 Conc: N.D.

Instrument :
 ECD_R
 ClientSampleId :
 Z2-9

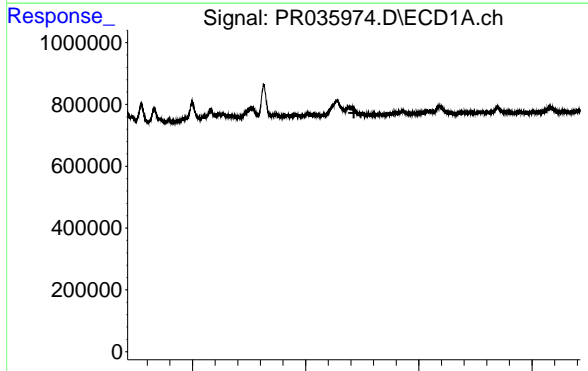
Time



#38 AR-1262-3

R.T.: 7.303 min
 Delta R.T.: -0.006 min
 Response: 1531024
 Conc: 3.74 ng/ml

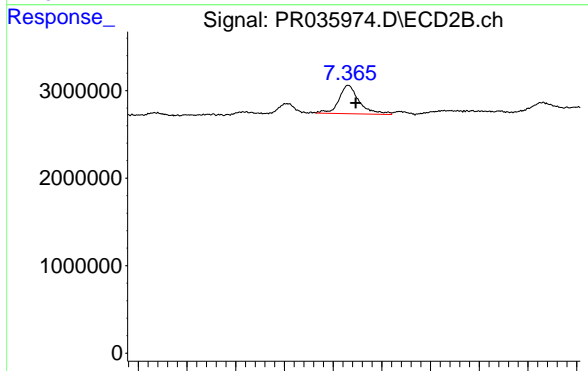
Time



#39 AR-1262-4

R.T.: 0.000 min
 Exp R.T. : 8.713 min
 Response: 0
 Conc: N.D.

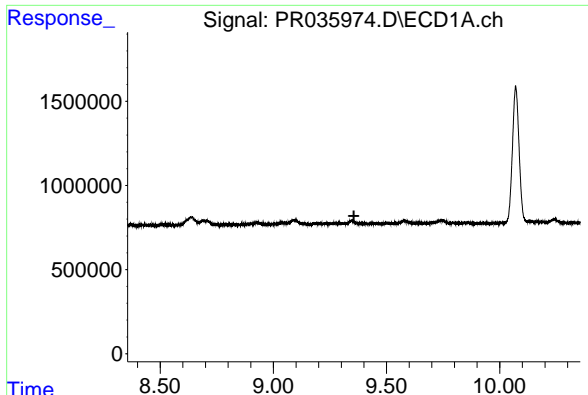
Time



#39 AR-1262-4

R.T.: 7.366 min
 Delta R.T.: -0.008 min
 Response: 4673541
 Conc: 6.46 ng/ml

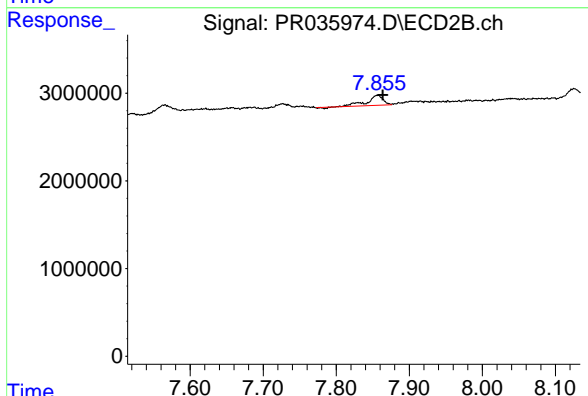
Time



#40 AR-1262-5

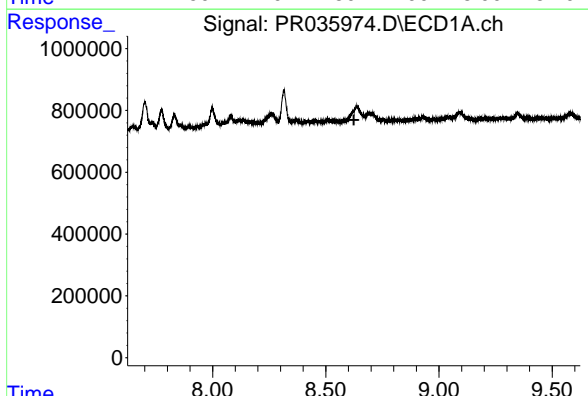
R.T.: 0.000 min
 Exp R.T. : 9.356 min
 Response: 0
 Conc: N.D.

Instrument :
 ECD_R
 ClientSampleId :
 Z2-9



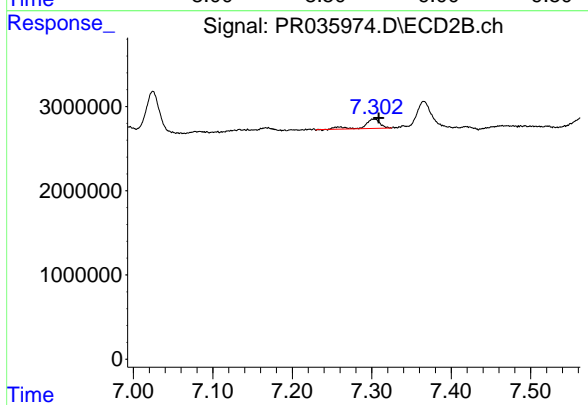
#40 AR-1262-5

R.T.: 7.857 min
 Delta R.T.: -0.007 min
 Response: 1678100
 Conc: 5.11 ng/ml



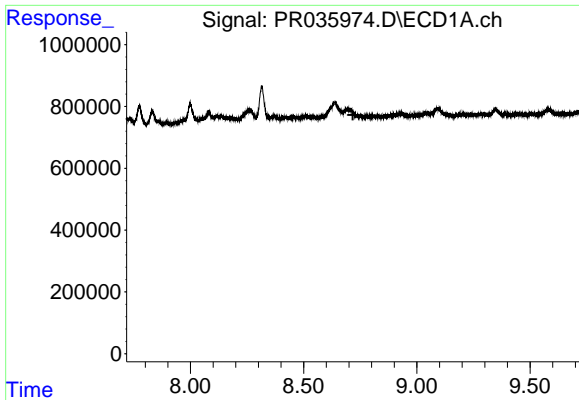
#41 AR-1268-1

R.T.: 0.000 min
 Exp R.T. : 8.624 min
 Response: 0
 Conc: N.D.



#41 AR-1268-1

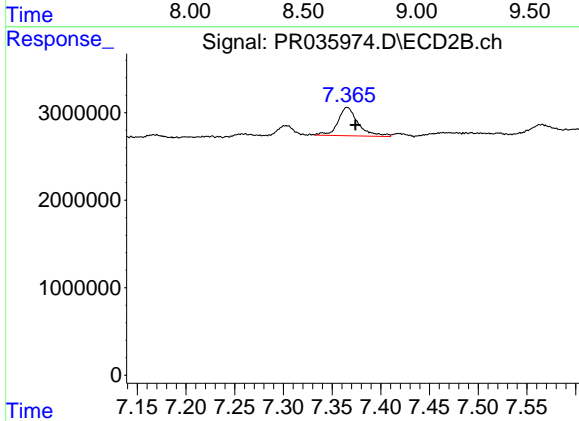
R.T.: 7.303 min
 Delta R.T.: -0.006 min
 Response: 1531024
 Conc: 1.21 ng/ml



#42 AR-1268-2

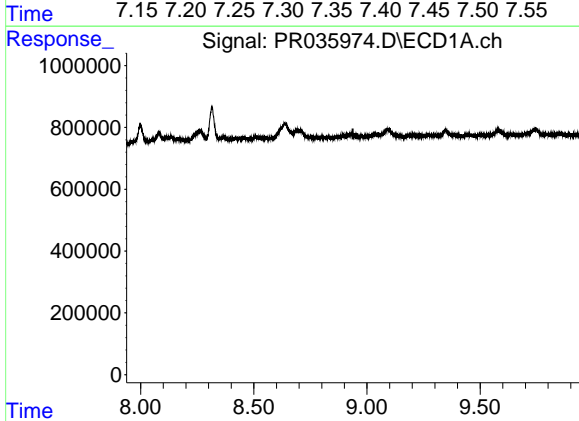
R.T.: 0.000 min
 Exp R.T.: 8.717 min
 Response: 0
 Conc: N.D.

Instrument :
 ECD_R
 ClientSampled :
 Z2-9



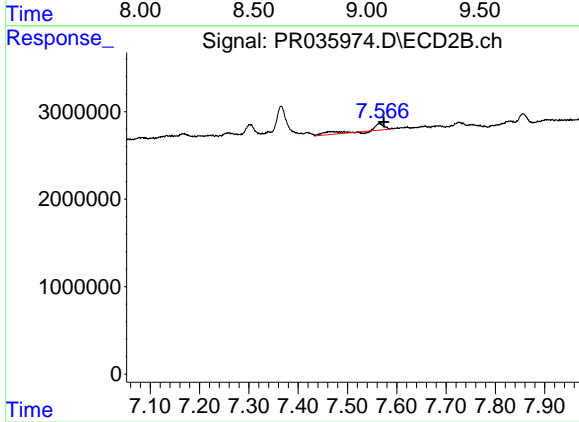
#42 AR-1268-2

R.T.: 7.366 min
 Delta R.T.: -0.008 min
 Response: 4673541
 Conc: 4.12 ng/ml



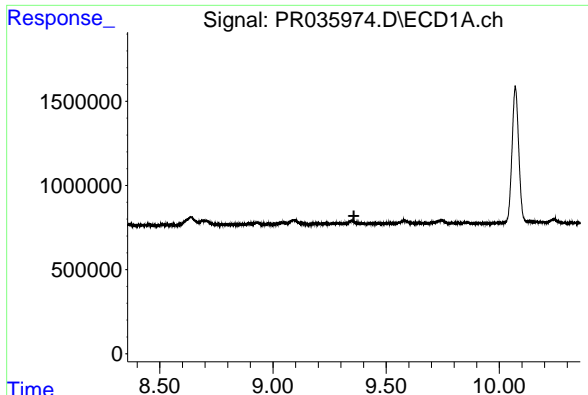
#43 AR-1268-3

R.T.: 0.000 min
 Exp R.T.: 8.938 min
 Response: 0
 Conc: N.D.



#43 AR-1268-3

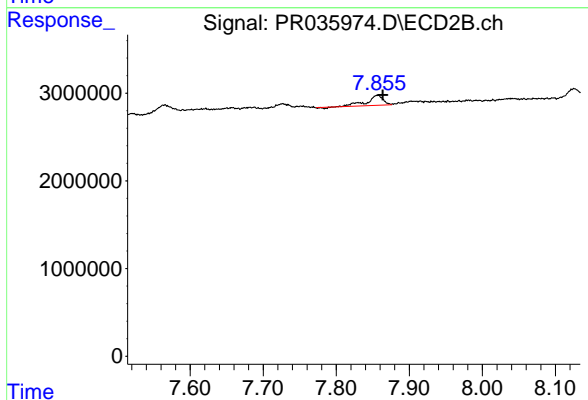
R.T.: 7.565 min
 Delta R.T.: -0.008 min
 Response: 1592171
 Conc: 1.62 ng/ml



#44 AR-1268-4

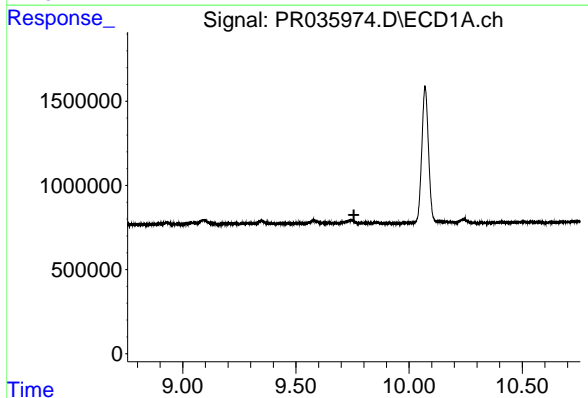
R.T.: 0.000 min
 Exp R.T. : 9.357 min
 Response: 0
 Conc: N.D.

Instrument :
 ECD_R
 ClientSampled :
 Z2-9



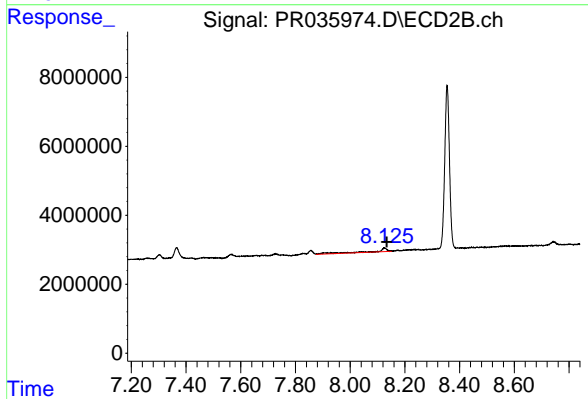
#44 AR-1268-4

R.T.: 7.857 min
 Delta R.T.: -0.007 min
 Response: 1678100
 Conc: 4.69 ng/ml



#45 AR-1268-5

R.T.: 0.000 min
 Exp R.T. : 9.756 min
 Response: 0
 Conc: N.D.



#45 AR-1268-5

R.T.: 8.126 min
 Delta R.T.: -0.008 min
 Response: 2841207
 Conc: 1.07 ng/ml