

Data Path : Z:\pestpcbsrv\HPCHEM1\ECD\_R\Data\PR031819\  
 Data File : PR036272.D  
 Signal(s) : Signal #1: ECD1A.ch Signal #2: ECD2B.ch  
 Acq On : 18 Mar 2019 12:46 pm  
 Operator : SM\SJ  
 Sample : K1871-01  
 Misc :  
 ALS Vial : 7 Sample Multiplier: 1

**Instrument :**  
 ECD\_R  
**ClientSampled :**  
 TP-1

**Manual Integrations**  
**APPROVED**  
 Sohil  
 3/19/2019 9:26:20 AM

Integration File signal 1: sample.E  
 Integration File signal 2: events2.e  
 Quant Time: Mar 18 14:09:05 2019  
 Quant Method : Z:\pestpcbsrv\HPCHEM1\ECD\_R\Method\PR031519.M  
 Quant Title : GC EXTRACTABLES  
 QLast Update : Sat Mar 16 00:14:35 2019  
 Response via : Initial Calibration  
 Integrator: ChemStation

Volume Inj. : 1 ul  
 Signal #1 Phase : Rxi-1ms Signal #2 Phase:  
 Signal #1 Info : 20M x 0.18mm x 0. Signal #2 Info :

Compound	RT#1	RT#2	Resp#1	Resp#2	ng/ml	ng/ml
-----						
System Monitoring Compounds						
1) SA Tetrachlo...	4.411	3.488	31761890	85468513	17.211m	13.448
2) SA Decachlor...	10.067	8.351	29872680	93729913	20.454m	16.425m
Target Compounds						
31) L7 AR-1260-1	7.165	5.989	18805946	32267082	204.680	88.523 #
32) L7 AR-1260-2	7.423	6.161	503.9E6	143.3E6	4686.503	275.059 #
33) L7 AR-1260-3	7.737	6.323	82334775	31909628	1003.925	75.265 #
34) L7 AR-1260-4	8.002	6.784	22045444	20716908	237.131	58.930 #
35) L7 AR-1260-5	8.314	7.025	184.6E6	86116935	1046.281	87.229 #
-----						

(f)=RT Delta > 1/2 Window (#)=Amounts differ by > 25% (m)=manual int.

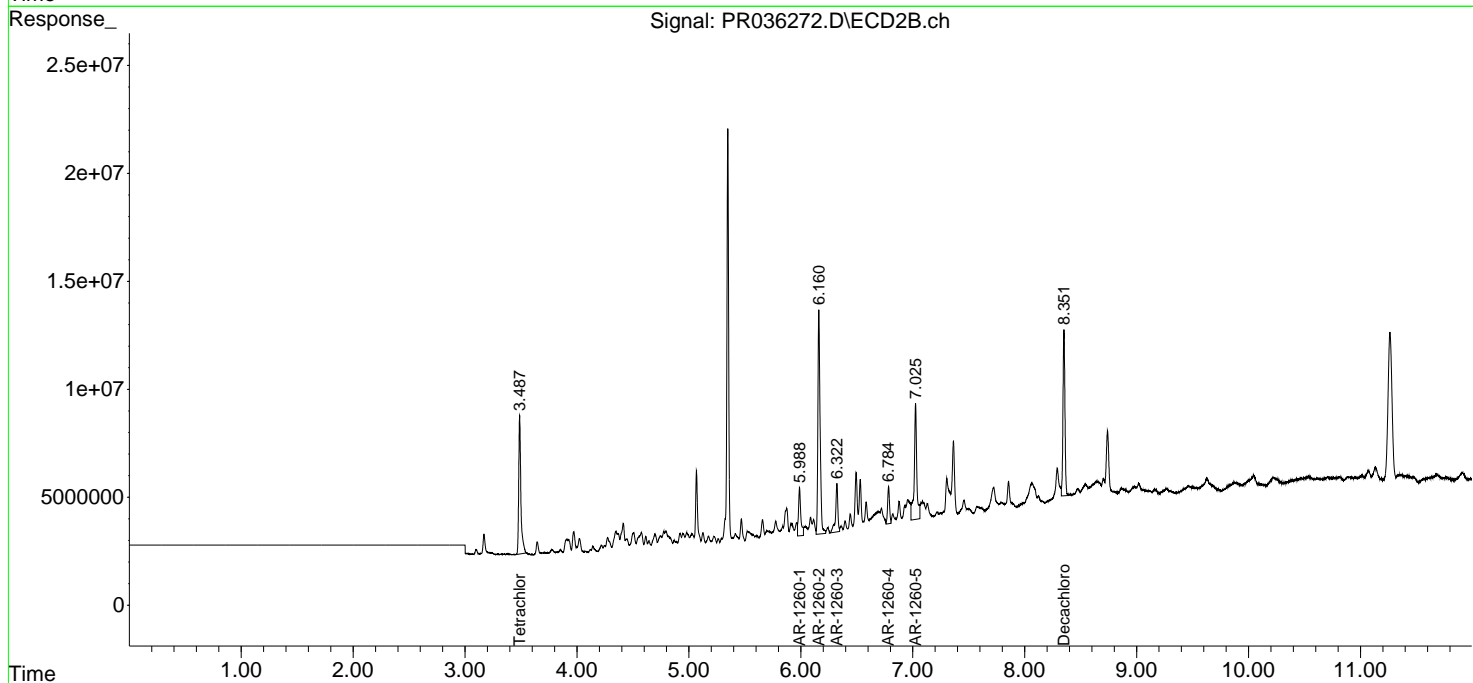
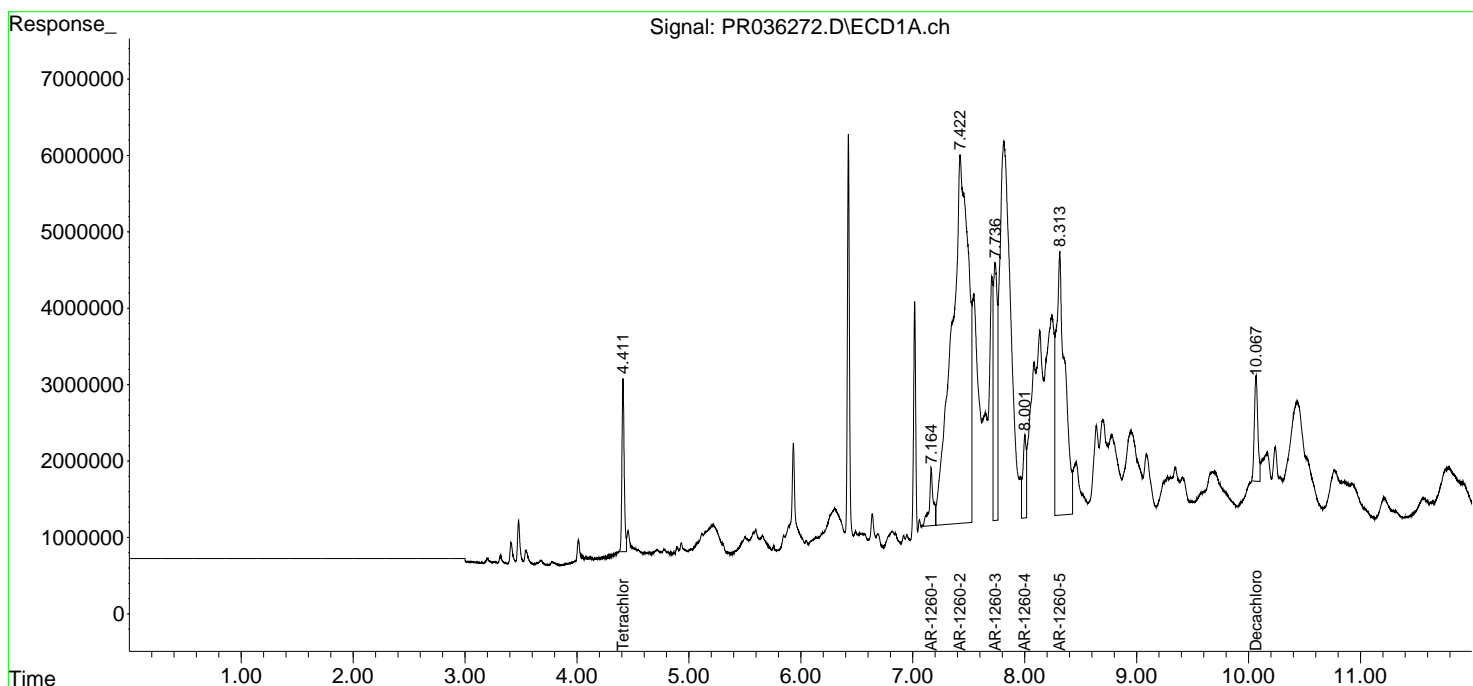
Data Path : Z:\pestpcbsrv\HPCHEM1\ECD\_R\Data\PR031819\  
 Data File : PR036272.D  
 Signal(s) : Signal #1: ECD1A.ch Signal #2: ECD2B.ch  
 Acq On : 18 Mar 2019 12:46 pm  
 Operator : SM\SJ  
 Sample : K1871-01  
 Misc :  
 ALS Vial : 7 Sample Multiplier: 1

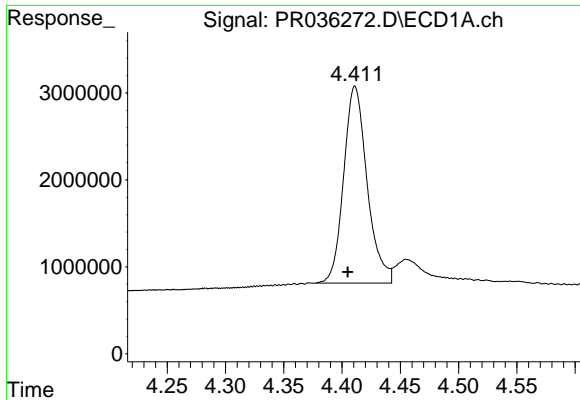
Instrument :  
 ECD\_R  
 ClientSampled :  
 TP-1

Manual Integrations  
**APPROVED**  
 Sohil  
 3/19/2019 9:26:20 AM

Integration File signal 1: sample.E  
 Integration File signal 2: events2.e  
 Quant Time: Mar 18 14:09:05 2019  
 Quant Method : Z:\pestpcbsrv\HPCHEM1\ECD\_R\Method\PR031519.M  
 Quant Title : GC EXTRACTABLES  
 QLast Update : Sat Mar 16 00:14:35 2019  
 Response via : Initial Calibration  
 Integrator: ChemStation

Volume Inj. : 1 ul  
 Signal #1 Phase : Rxi-1ms Signal #2 Phase:  
 Signal #1 Info : 20M x 0.18mm x 0. Signal #2 Info :

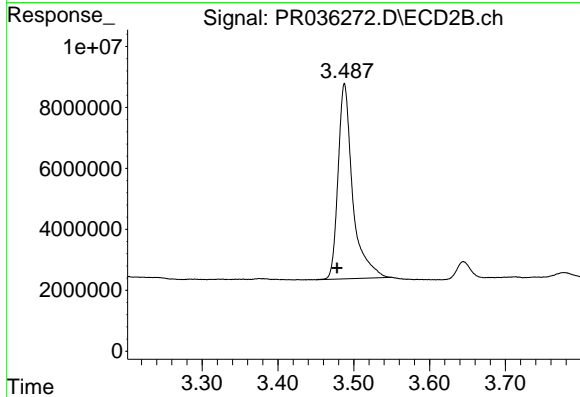




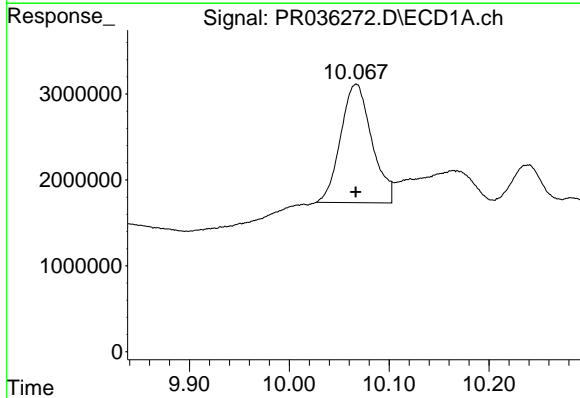
#1 Tetrachloro-m-xylene  
 R.T.: 4.411 min  
 Delta R.T.: 0.006 min  
 Response: 31761890  
 Conc: 17.21 ng/ml m

Instrument :  
 ECD\_R  
 ClientSampled :  
 TP-1

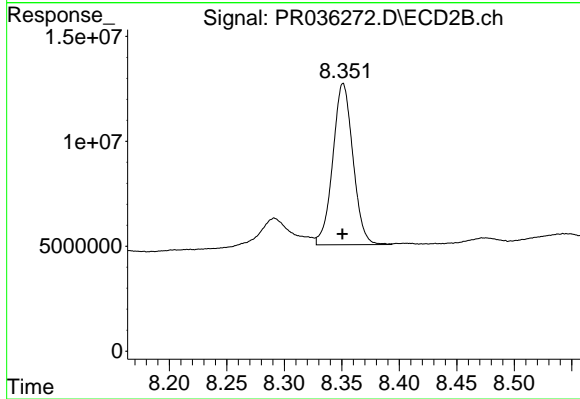
Manual Integrations  
 APPROVED  
 Sohil  
 3/19/2019 9:26:20 AM



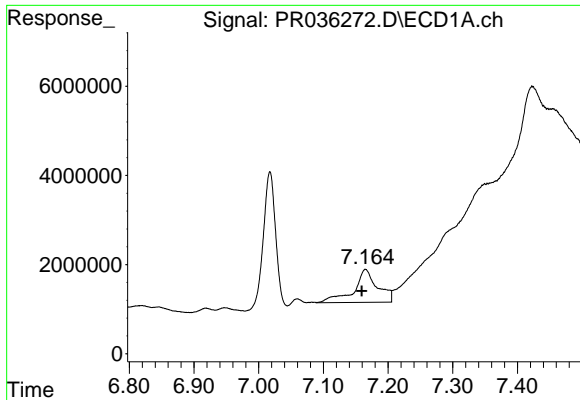
#1 Tetrachloro-m-xylene  
 R.T.: 3.488 min  
 Delta R.T.: 0.010 min  
 Response: 85468513  
 Conc: 13.45 ng/ml



#2 Decachlorobiphenyl  
 R.T.: 10.067 min  
 Delta R.T.: 0.000 min  
 Response: 29872680  
 Conc: 20.45 ng/ml m



#2 Decachlorobiphenyl  
 R.T.: 8.351 min  
 Delta R.T.: 0.000 min  
 Response: 93729913  
 Conc: 16.42 ng/ml m

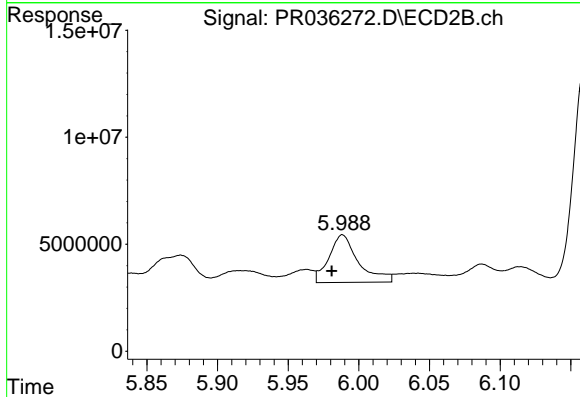


#31 AR-1260-1

R.T.: 7.165 min  
 Delta R.T.: 0.006 min  
 Response: 18805946  
 Conc: 204.68 ng/ml

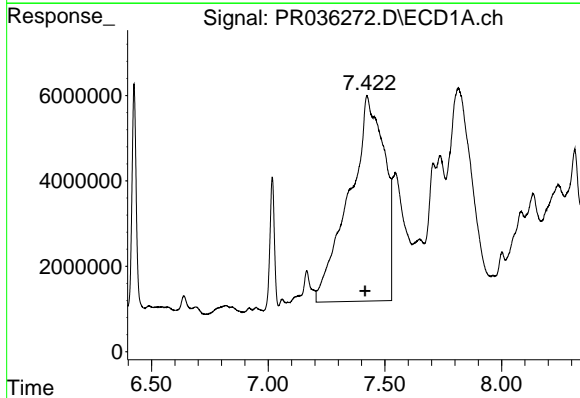
**Instrument :**  
 ECD\_R  
**ClientSampled :**  
 TP-1

**Manual Integrations**  
**APPROVED**  
 Sohil  
 3/19/2019 9:26:20 AM



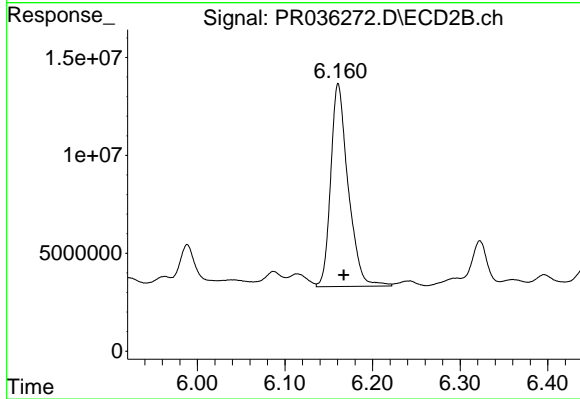
#31 AR-1260-1

R.T.: 5.989 min  
 Delta R.T.: 0.008 min  
 Response: 32267082  
 Conc: 88.52 ng/ml



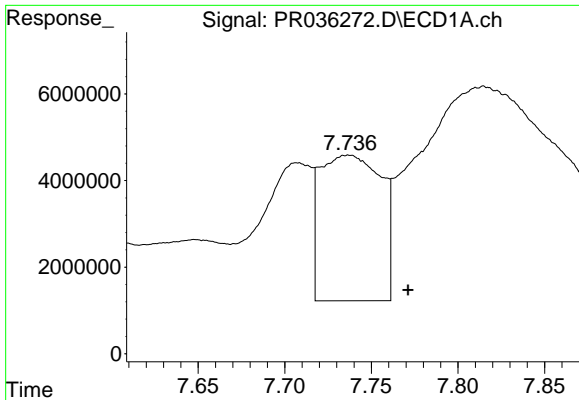
#32 AR-1260-2

R.T.: 7.423 min  
 Delta R.T.: 0.008 min  
 Response: 503899532  
 Conc: 4686.50 ng/ml



#32 AR-1260-2

R.T.: 6.161 min  
 Delta R.T.: -0.006 min  
 Response: 143262918  
 Conc: 275.06 ng/ml

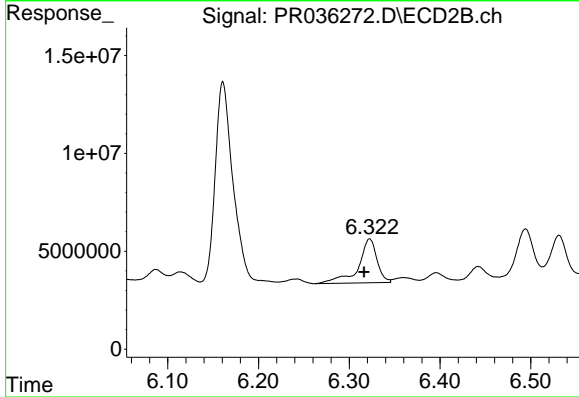


#33 AR-1260-3

R.T.: 7.737 min  
 Delta R.T.: -0.034 min  
 Response: 82334775  
 Conc: 1003.92 ng/ml

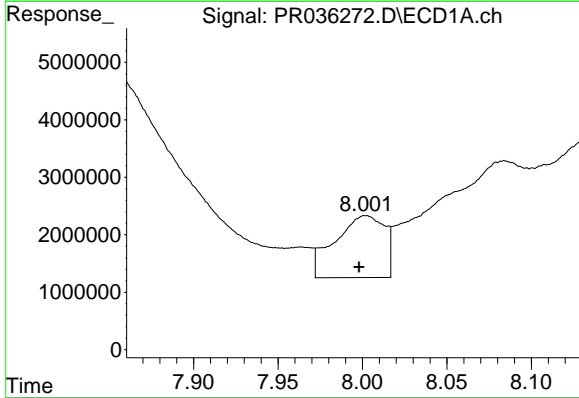
**Instrument :**  
 ECD\_R  
**ClientSampled :**  
 TP-1

**Manual Integrations**  
**APPROVED**  
 Sohil  
 3/19/2019 9:26:20 AM



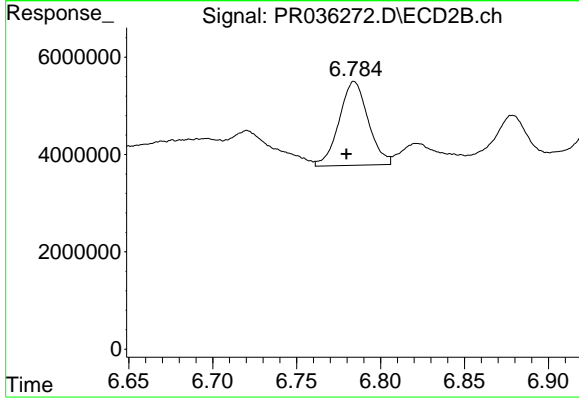
#33 AR-1260-3

R.T.: 6.323 min  
 Delta R.T.: 0.006 min  
 Response: 31909628  
 Conc: 75.26 ng/ml



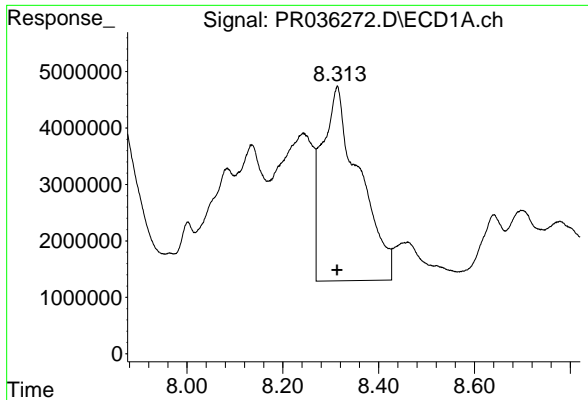
#34 AR-1260-4

R.T.: 8.002 min  
 Delta R.T.: 0.004 min  
 Response: 22045444  
 Conc: 237.13 ng/ml



#34 AR-1260-4

R.T.: 6.784 min  
 Delta R.T.: 0.005 min  
 Response: 20716908  
 Conc: 58.93 ng/ml

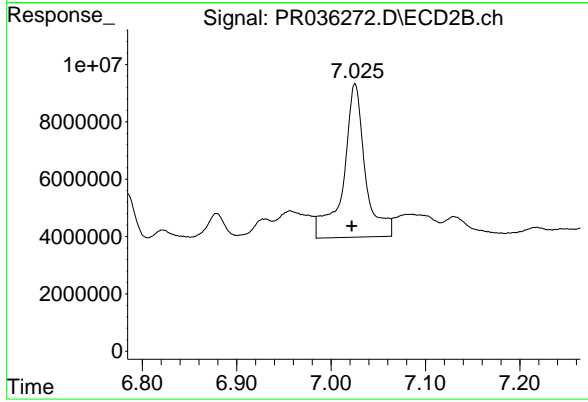


#35 AR-1260-5

R.T.: 8.314 min  
Delta R.T.: 0.000 min  
Response: 184589483  
Conc: 1046.28 ng/ml

Instrument :  
ECD\_R  
ClientSampled :  
TP-1

Manual Integrations  
APPROVED  
Sohil  
3/19/2019 9:26:20 AM



#35 AR-1260-5

R.T.: 7.025 min  
Delta R.T.: 0.004 min  
Response: 86116935  
Conc: 87.23 ng/ml