

Data Path : Z:\pestpcbsrv\HPCHEM1\ECD\_R\Data\PR032019\  
 Data File : PR036408.D  
 Signal(s) : Signal #1: ECD1A.ch Signal #2: ECD2B.ch  
 Acq On : 20 Mar 2019 16:43  
 Operator : SM\SJ  
 Sample : K1807-07  
 Misc :  
 ALS Vial : 88 Sample Multiplier: 1

Instrument :  
 ECD\_R  
 ClientSampleId :  
 TP-4

Integration File signal 1: autoint1.e  
 Integration File signal 2: autoint2.e  
 Quant Time: Mar 20 17:17:44 2019  
 Quant Method : Z:\pestpcbsrv\HPCHEM1\ECD\_R\Method\PR032019.M  
 Quant Title : GC EXTRACTABLES  
 QLast Update : Wed Mar 20 15:19:33 2019  
 Response via : Initial Calibration  
 Integrator: ChemStation

Volume Inj. : 2 µl  
 Signal #1 Phase : ZB-MR1 Signal #2 Phase: ZB-MR2  
 Signal #1 Info : 30Mx0.32mmx 0.50µ Signal #2 Info : 30M x 0.32mm x 0.25µm

Compound	RT#1	RT#2	Resp#1	Resp#2	ng/ml	ng/ml
-----						
System Monitoring Compounds						
1) SA Tetrachlo...	4.401	3.472	25424921	61629078	16.799	15.030
2) SA Decachlor...	10.056	8.340	27268326	86761798	15.557	15.683

Target Compounds

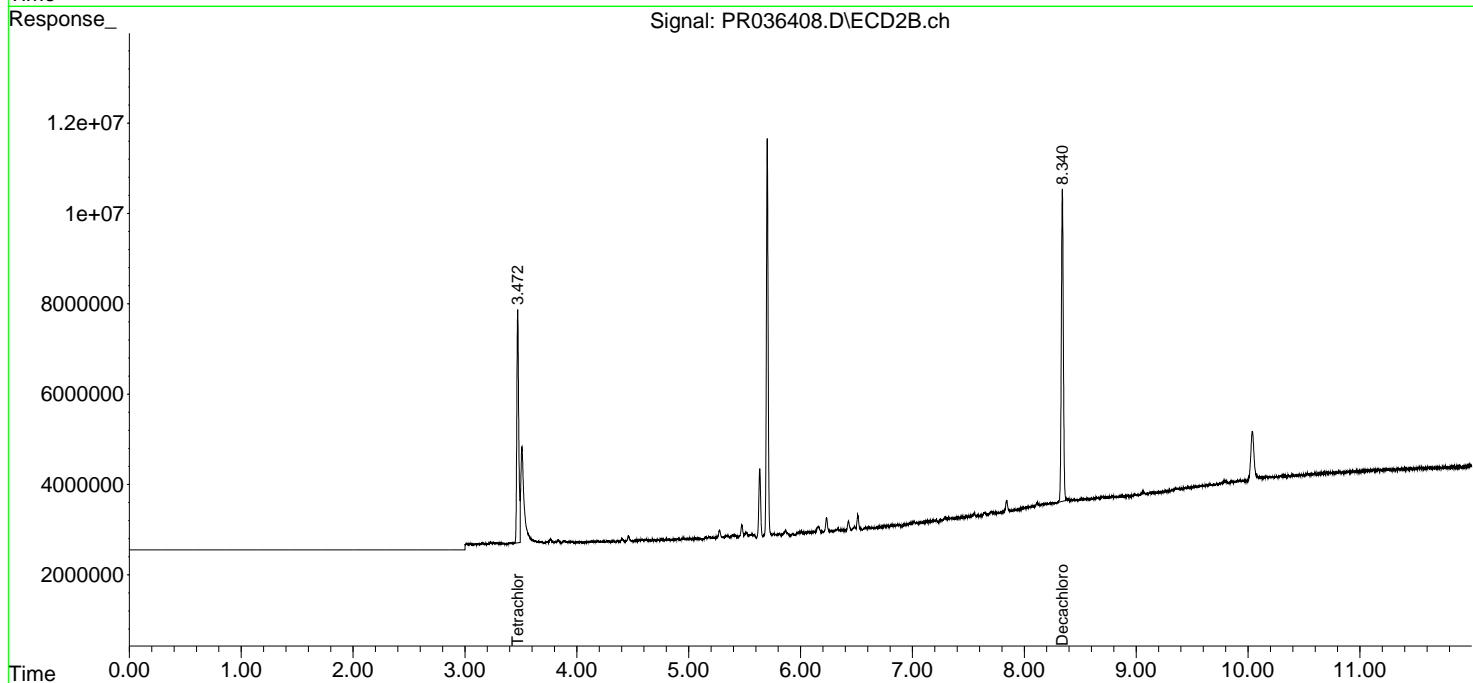
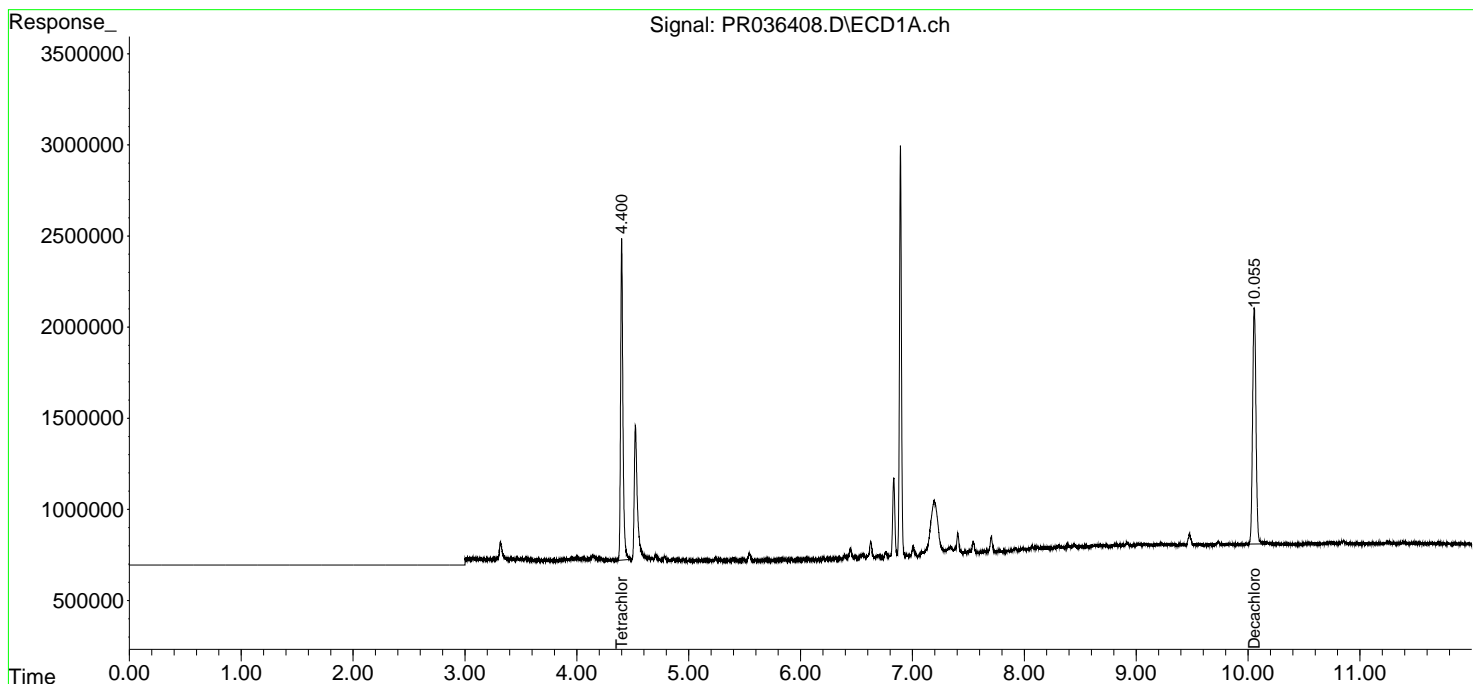
(f)=RT Delta > 1/2 Window (#)=Amounts differ by > 25% (m)=manual int.

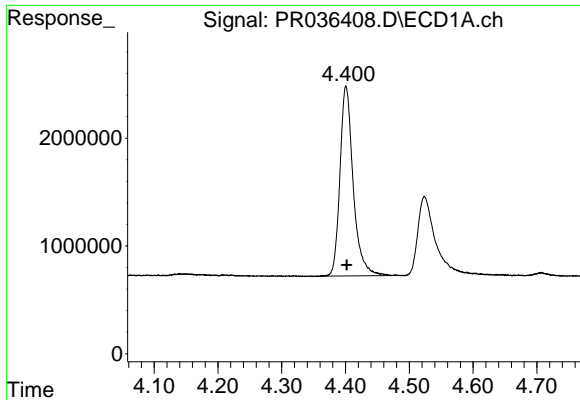
Data Path : Z:\pestpcbsrv\HPCHEM1\ECD\_R\Data\PR032019\  
 Data File : PR036408.D  
 Signal(s) : Signal #1: ECD1A.ch Signal #2: ECD2B.ch  
 Acq On : 20 Mar 2019 16:43  
 Operator : SM\SJ  
 Sample : K1807-07  
 Misc :  
 ALS Vial : 88 Sample Multiplier: 1

Instrument :  
 ECD\_R  
 ClientSampleId :  
 TP-4

Integration File signal 1: autoint1.e  
 Integration File signal 2: autoint2.e  
 Quant Time: Mar 20 17:17:44 2019  
 Quant Method : Z:\pestpcbsrv\HPCHEM1\ECD\_R\Method\PR032019.M  
 Quant Title : GC EXTRACTABLES  
 QLast Update : Wed Mar 20 15:19:33 2019  
 Response via : Initial Calibration  
 Integrator: ChemStation

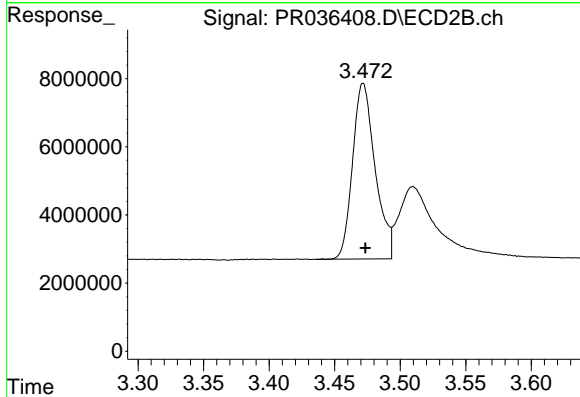
Volume Inj. : 2 µl  
 Signal #1 Phase : ZB-MR1 Signal #2 Phase: ZB-MR2  
 Signal #1 Info : 30Mx0.32mmx 0.50µ Signal #2 Info : 30M x 0.32mm x 0.25µm



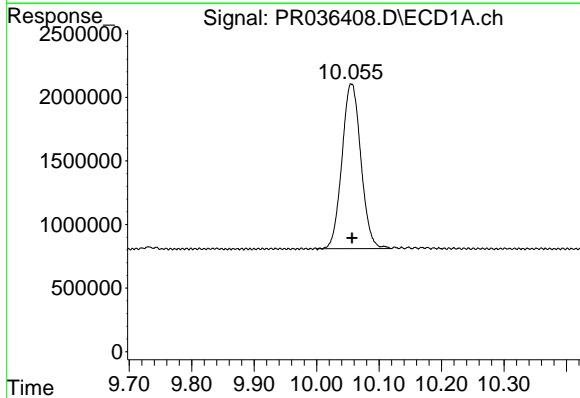


#1 Tetrachloro-m-xylene  
 R.T.: 4.401 min  
 Delta R.T.: -0.001 min  
 Response: 25424921  
 Conc: 16.80 ng/ml

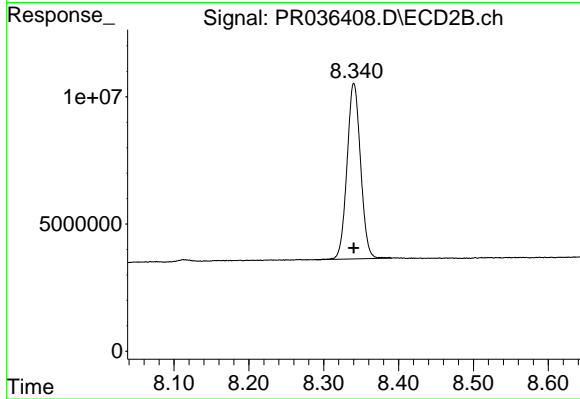
Instrument :  
 ECD\_R  
 ClientSampleId :  
 TP-4



#1 Tetrachloro-m-xylene  
 R.T.: 3.472 min  
 Delta R.T.: -0.002 min  
 Response: 61629078  
 Conc: 15.03 ng/ml



#2 Decachlorobiphenyl  
 R.T.: 10.056 min  
 Delta R.T.: -0.001 min  
 Response: 27268326  
 Conc: 15.56 ng/ml



#2 Decachlorobiphenyl  
 R.T.: 8.340 min  
 Delta R.T.: 0.000 min  
 Response: 86761798  
 Conc: 15.68 ng/ml