

Data Path : Z:\pestpcbsrv\HPCHEM1\ECD_R\Data\PR032219\
 Data File : PR036540.D
 Signal(s) : Signal #1: ECD1A.ch Signal #2: ECD2B.ch
 Acq On : 22 Mar 2019 10:09
 Operator : SM\SJ
 Sample : PB118043BL
 Misc :
 ALS Vial : 33 Sample Multiplier: 1

Instrument :
 ECD_R
ClientSampleId :
 PB118043BL

Manual Integrations
APPROVED
 Sohil
 3/26/2019 9:16:17 AM

Integration File signal 1: autoint1.e
 Integration File signal 2: autoint2.e
 Quant Time: Mar 22 10:41:46 2019
 Quant Method : Z:\pestpcbsrv\HPCHEM1\ECD_R\Method\PR032019.M
 Quant Title : GC EXTRACTABLES
 QLast Update : Wed Mar 20 15:19:33 2019
 Response via : Initial Calibration
 Integrator: ChemStation

Volume Inj. : 2 µl
 Signal #1 Phase : ZB-MR1 Signal #2 Phase: ZB-MR2
 Signal #1 Info : 30Mx0.32mmx 0.50µ Signal #2 Info : 30M x 0.32mm x 0.25µm

Compound	RT#1	RT#2	Resp#1	Resp#2	ng/ml	ng/ml

System Monitoring Compounds						
1) SA Tetrachlo...	4.399	3.473	28892334	84646337	19.090	20.643
2) SA Decachlor...	10.050	8.336	36303107	120.9E6	20.712	21.855m

Target Compounds

 (f)=RT Delta > 1/2 Window (#)=Amounts differ by > 25% (m)=manual int.

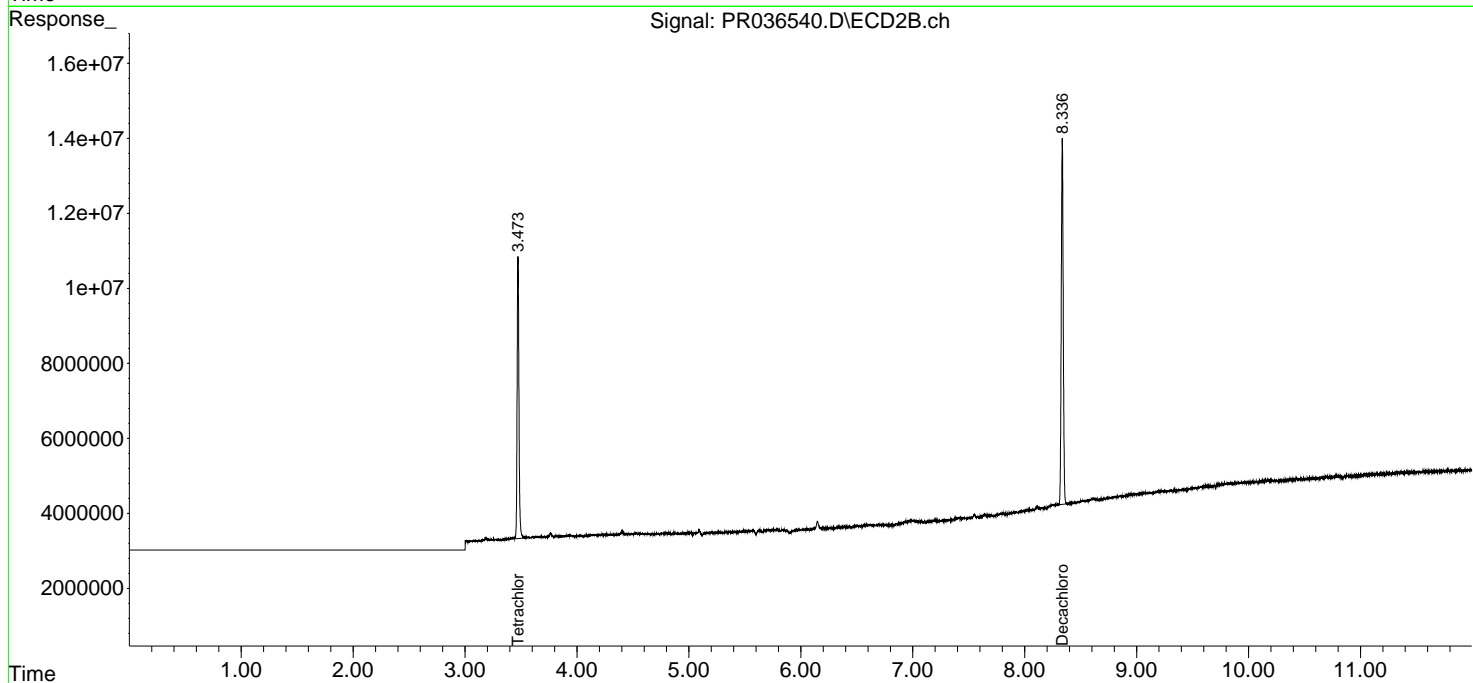
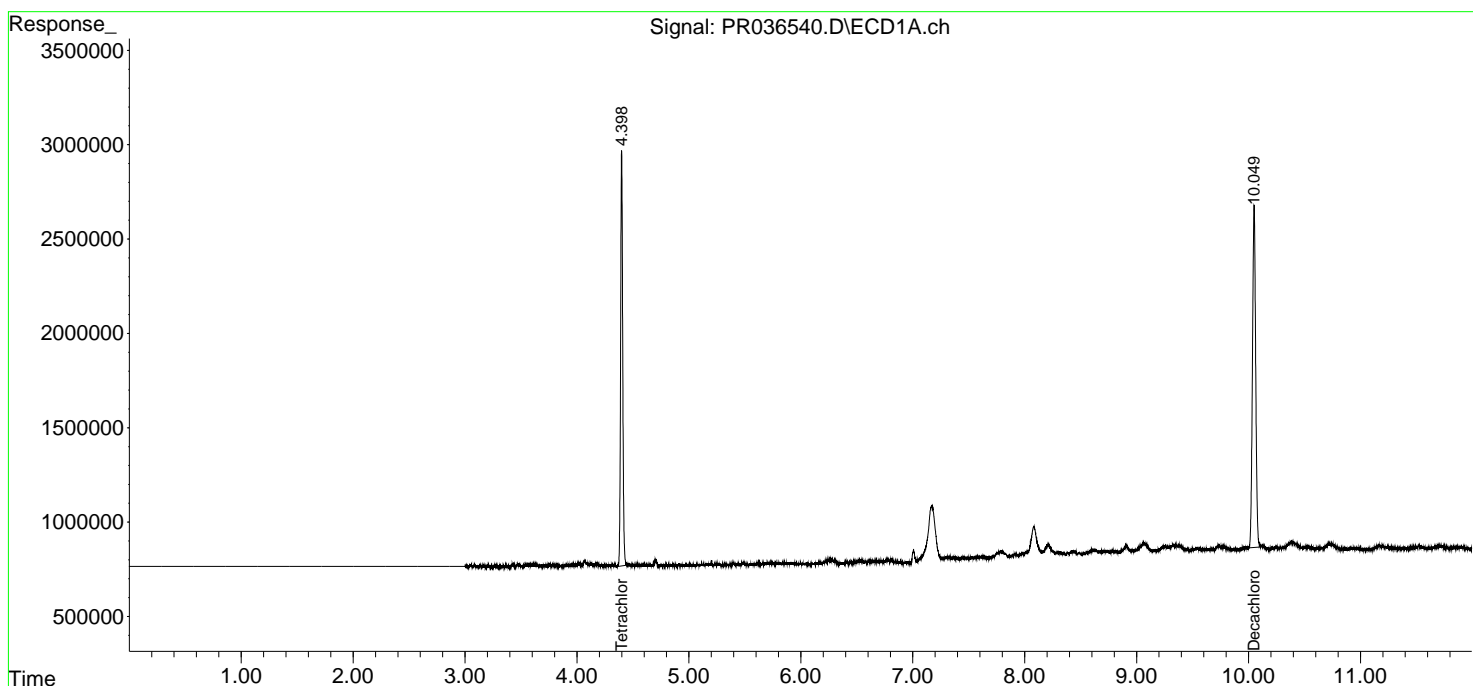
Data Path : Z:\pestpcbsrv\HPCHEM1\ECD_R\Data\PR032219\
 Data File : PR036540.D
 Signal(s) : Signal #1: ECD1A.ch Signal #2: ECD2B.ch
 Acq On : 22 Mar 2019 10:09
 Operator : SM\SJ
 Sample : PB118043BL
 Misc :
 ALS Vial : 33 Sample Multiplier: 1

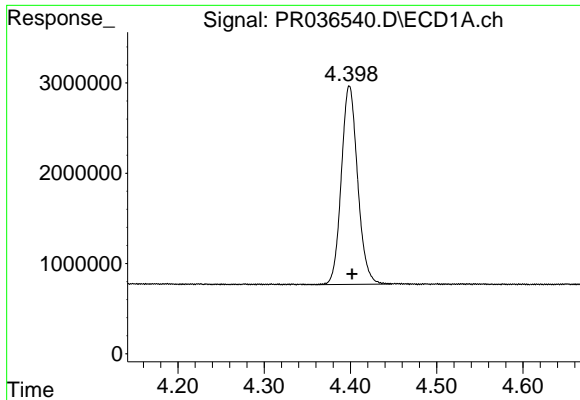
Instrument :
 ECD_R
Client Sampled :
 PB118043BL

Manual Integrations
APPROVED
 Sohil
 3/26/2019 9:16:17 AM

Integration File signal 1: autoint1.e
 Integration File signal 2: autoint2.e
 Quant Time: Mar 22 10:41:46 2019
 Quant Method : Z:\pestpcbsrv\HPCHEM1\ECD_R\Method\PR032019.M
 Quant Title : GC EXTRACTABLES
 QLast Update : Wed Mar 20 15:19:33 2019
 Response via : Initial Calibration
 Integrator: ChemStation

Volume Inj. : 2 µl
 Signal #1 Phase : ZB-MR1 Signal #2 Phase: ZB-MR2
 Signal #1 Info : 30Mx0.32mmx 0.50µ Signal #2 Info : 30M x 0.32mm x 0.25µm

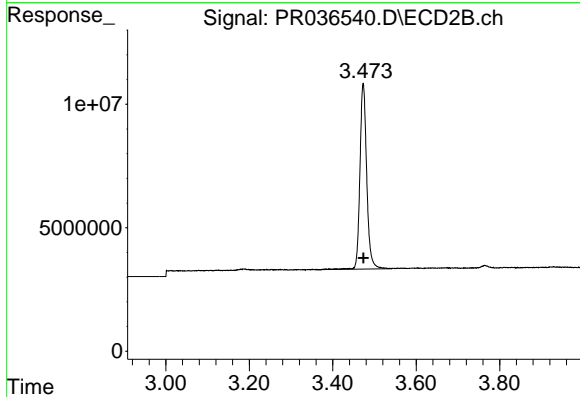




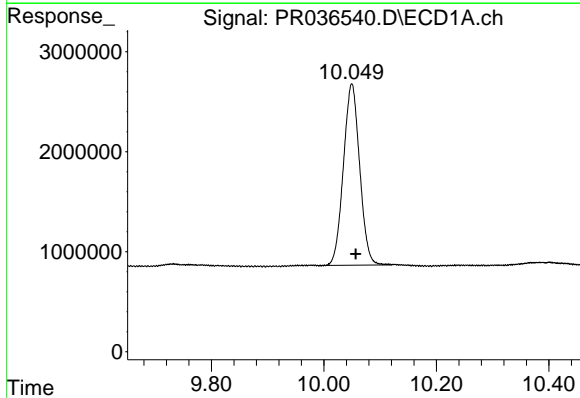
#1 Tetrachloro-m-xylene
 R.T.: 4.399 min
 Delta R.T.: -0.003 min
 Response: 28892334
 Conc: 19.09 ng/ml

Instrument :
 ECD_R
ClientSampled :
 PB118043BL

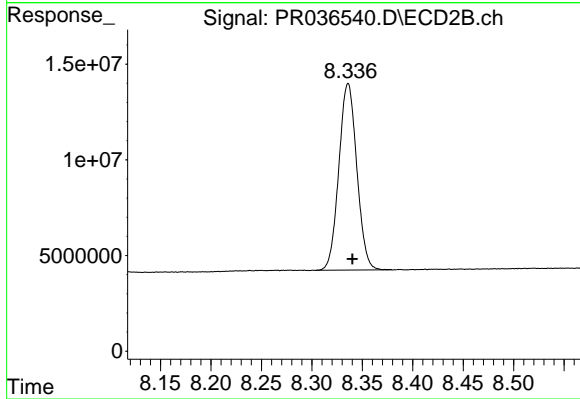
Manual Integrations
APPROVED
 Sohil
 3/26/2019 9:16:17 AM



#1 Tetrachloro-m-xylene
 R.T.: 3.473 min
 Delta R.T.: 0.000 min
 Response: 84646337
 Conc: 20.64 ng/ml



#2 Decachlorobiphenyl
 R.T.: 10.050 min
 Delta R.T.: -0.007 min
 Response: 36303107
 Conc: 20.71 ng/ml



#2 Decachlorobiphenyl
 R.T.: 8.336 min
 Delta R.T.: -0.005 min
 Response: 120907332
 Conc: 21.85 ng/ml m