

Data Path : Z:\pestpcbsrv\HPCHEM1\ECD\_R\Data\PR032219\  
 Data File : PR036553.D  
 Signal(s) : Signal #1: ECD1A.ch Signal #2: ECD2B.ch  
 Acq On : 22 Mar 2019 13:51  
 Operator : SM\SJ  
 Sample : K1984-06  
 Misc :  
 ALS Vial : 10 Sample Multiplier: 1

**Instrument :**  
 ECD\_R  
**ClientSampleId :**  
 SB-13(13.5-14.5)

**Manual Integrations**  
**APPROVED**  
 Sohil  
 3/26/2019 9:16:22 AM

Integration File signal 1: autoint1.e  
 Integration File signal 2: autoint2.e  
 Quant Time: Mar 22 22:33:27 2019  
 Quant Method : Z:\pestpcbsrv\HPCHEM1\ECD\_R\Method\PR032019.M  
 Quant Title : GC EXTRACTABLES  
 QLast Update : Wed Mar 20 15:19:33 2019  
 Response via : Initial Calibration  
 Integrator: ChemStation

Volume Inj. : 2 µl  
 Signal #1 Phase : ZB-MR1 Signal #2 Phase: ZB-MR2  
 Signal #1 Info : 30Mx0.32mmx 0.50µ Signal #2 Info : 30M x 0.32mm x 0.25µm

Compound	RT#1	RT#2	Resp#1	Resp#2	ng/ml	ng/ml
-----						
System Monitoring Compounds						
1) SA Tetrachlo...	4.399	3.474	24083647	75645742	15.912	18.448
2) SA Decachlor...	10.050	8.336	15383968	43319466	8.777m	7.830

Target Compounds

(f)=RT Delta > 1/2 Window (#)=Amounts differ by > 25% (m)=manual int.

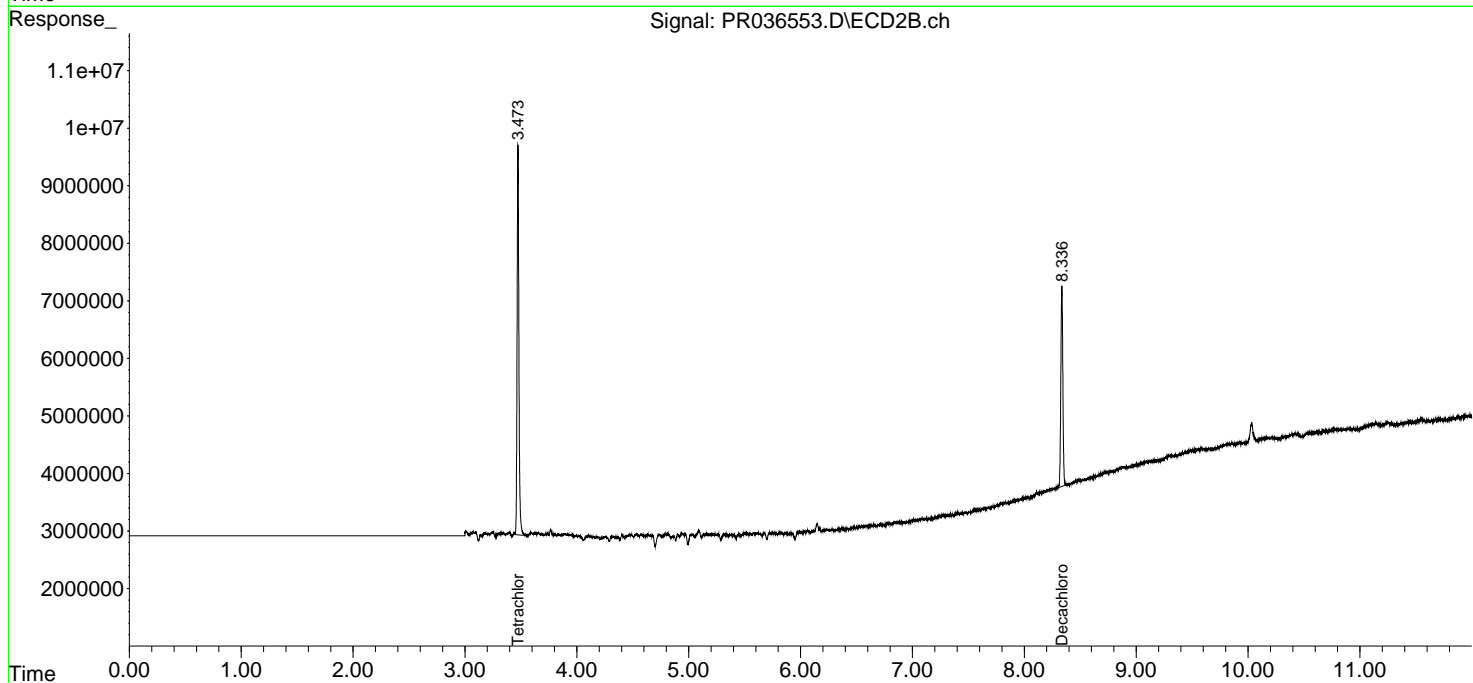
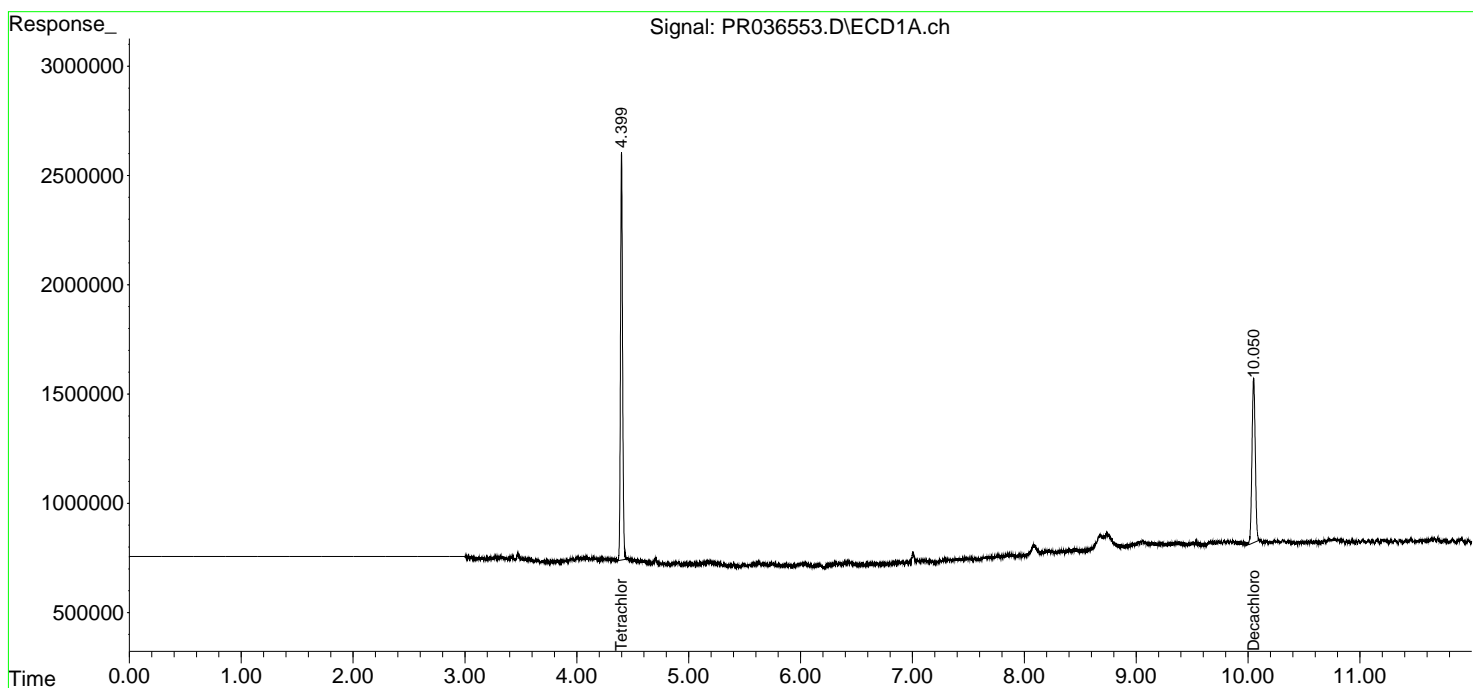
Data Path : Z:\pestpcbsrv\HPCHEM1\ECD\_R\Data\PR032219\  
 Data File : PR036553.D  
 Signal(s) : Signal #1: ECD1A.ch Signal #2: ECD2B.ch  
 Acq On : 22 Mar 2019 13:51  
 Operator : SM\SJ  
 Sample : K1984-06  
 Misc :  
 ALS Vial : 10 Sample Multiplier: 1

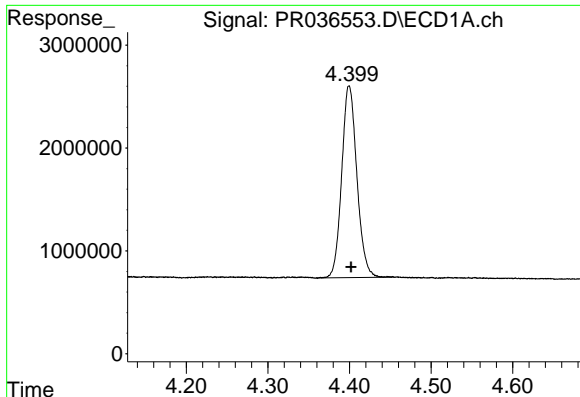
**Instrument :**  
 ECD\_R  
**Client Sampled :**  
 SB-13(13.5-14.5)

**Manual Integrations**  
**APPROVED**  
 Sohil  
 3/26/2019 9:16:22 AM

Integration File signal 1: autoint1.e  
 Integration File signal 2: autoint2.e  
 Quant Time: Mar 22 22:33:27 2019  
 Quant Method : Z:\pestpcbsrv\HPCHEM1\ECD\_R\Method\PR032019.M  
 Quant Title : GC EXTRACTABLES  
 QLast Update : Wed Mar 20 15:19:33 2019  
 Response via : Initial Calibration  
 Integrator: ChemStation

Volume Inj. : 2 µl  
 Signal #1 Phase : ZB-MR1 Signal #2 Phase: ZB-MR2  
 Signal #1 Info : 30Mx0.32mmx 0.50µ Signal #2 Info : 30M x 0.32mm x 0.25µm

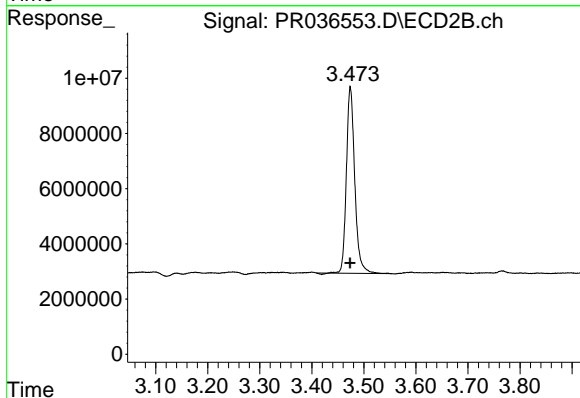




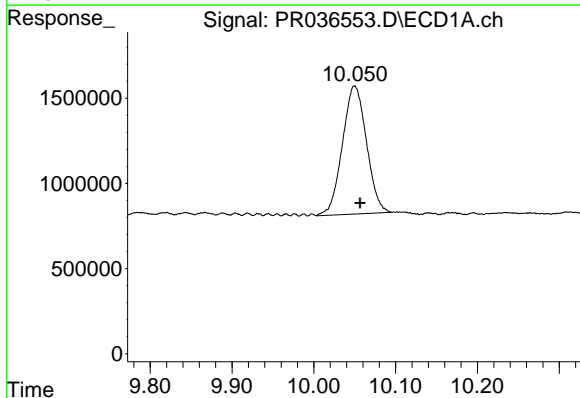
#1 Tetrachloro-m-xylene  
 R.T.: 4.399 min  
 Delta R.T.: -0.003 min  
 Response: 24083647  
 Conc: 15.91 ng/ml

**Instrument :**  
 ECD\_R  
**ClientSampled :**  
 SB-13(13.5-14.5)

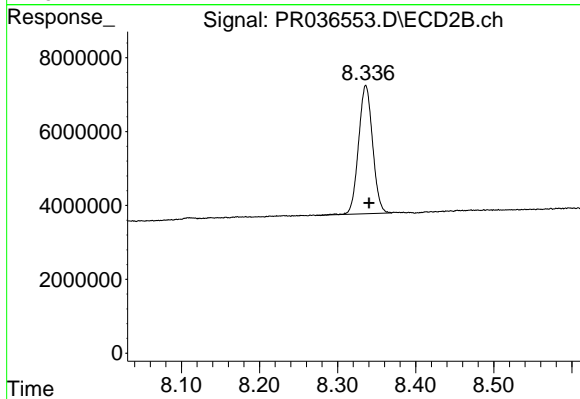
**Manual Integrations**  
**APPROVED**  
 Sohil  
 3/26/2019 9:16:22 AM



#1 Tetrachloro-m-xylene  
 R.T.: 3.474 min  
 Delta R.T.: 0.000 min  
 Response: 75645742  
 Conc: 18.45 ng/ml



#2 Decachlorobiphenyl  
 R.T.: 10.050 min  
 Delta R.T.: -0.006 min  
 Response: 15383968  
 Conc: 8.78 ng/ml m



#2 Decachlorobiphenyl  
 R.T.: 8.336 min  
 Delta R.T.: -0.004 min  
 Response: 43319466  
 Conc: 7.83 ng/ml