

Data Path : Z:\pestpcbsrv\HPCHEM1\ECD_R\Data\PR032219\
 Data File : PR036555.D
 Signal(s) : Signal #1: ECD1A.ch Signal #2: ECD2B.ch
 Acq On : 22 Mar 2019 14:20
 Operator : SM\SJ
 Sample : PB118081BS
 Misc :
 ALS Vial : 12 Sample Multiplier: 1

Instrument :
 ECD_R
 ClientSampleId :
 PB118081BS

Integration File signal 1: autoint1.e
 Integration File signal 2: autoint2.e
 Quant Time: Mar 22 22:34:07 2019
 Quant Method : Z:\pestpcbsrv\HPCHEM1\ECD_R\Method\PR032019.M
 Quant Title : GC EXTRACTABLES
 QLast Update : Wed Mar 20 15:19:33 2019
 Response via : Initial Calibration
 Integrator: ChemStation

Volume Inj. : 2 µl
 Signal #1 Phase : ZB-MR1 Signal #2 Phase: ZB-MR2
 Signal #1 Info : 30Mx0.32mmx 0.50µ Signal #2 Info : 30M x 0.32mm x 0.25µm

Compound	RT#1	RT#2	Resp#1	Resp#2	ng/ml	ng/ml

System Monitoring Compounds						
1) SA Tetrachlo...	4.400	3.475	31041906	92255108	20.510	22.499
2) SA Decachlor...	10.050	8.335	35673912	115.5E6	20.353	20.884
Target Compounds						
3) L1 AR-1016-1	5.561	4.525	11961330	36133244	200.692	220.734
4) L1 AR-1016-2	5.583	4.542	18180099	55141725	187.299	206.162
5) L1 AR-1016-3	5.644	4.713	11073454	28001688	191.869	209.976
6) L1 AR-1016-4	5.743	4.754	8897473	21505498	187.712	209.568
7) L1 AR-1016-5	6.034	4.961	9176562	28453205	185.290	200.233
31) L7 AR-1260-1	7.149	5.968	19273846	62434862	204.480	209.432
32) L7 AR-1260-2	7.405	6.155	22863325	96713831	200.374	217.296
33) L7 AR-1260-3	7.762	6.304	14832106	74105825	165.803	205.499
34) L7 AR-1260-4	7.987	6.767	18069953	56316749	176.305	179.480
35) L7 AR-1260-5	8.302	7.009	35030887	159.4E6	175.372	174.147

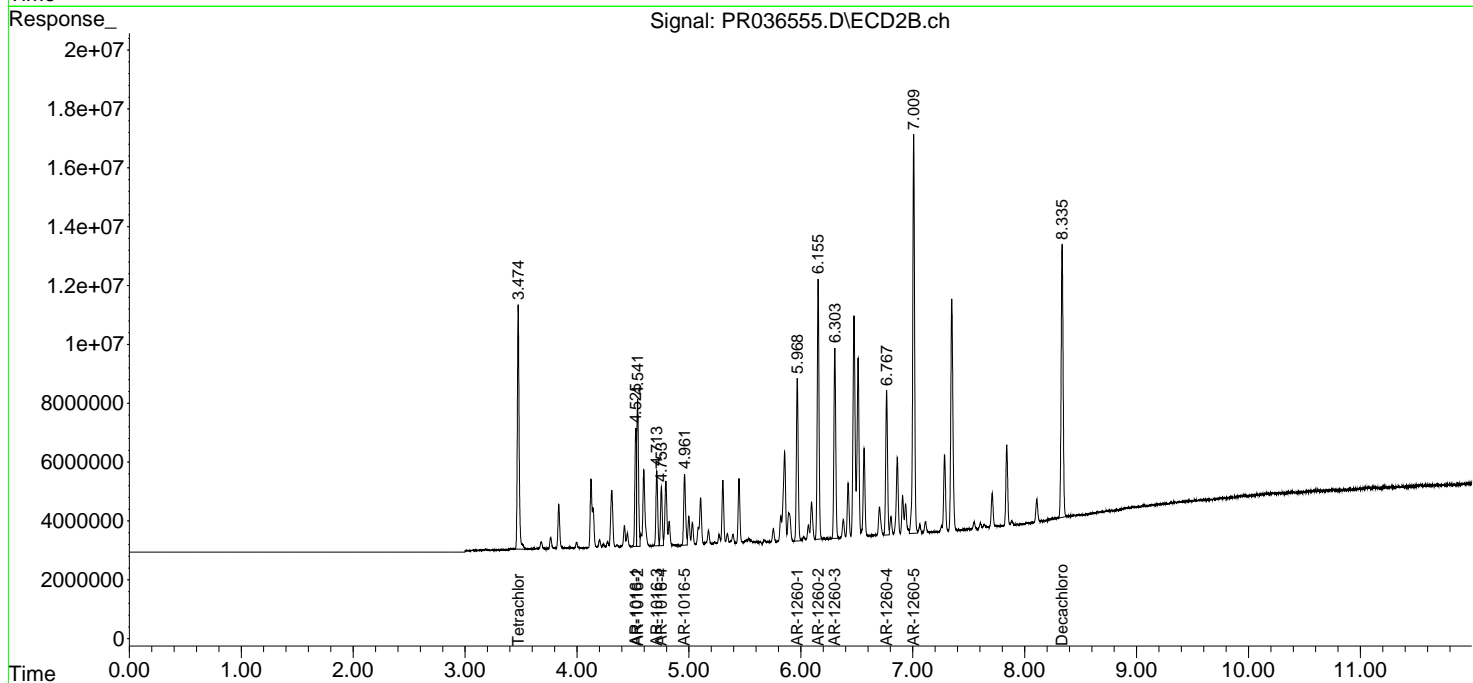
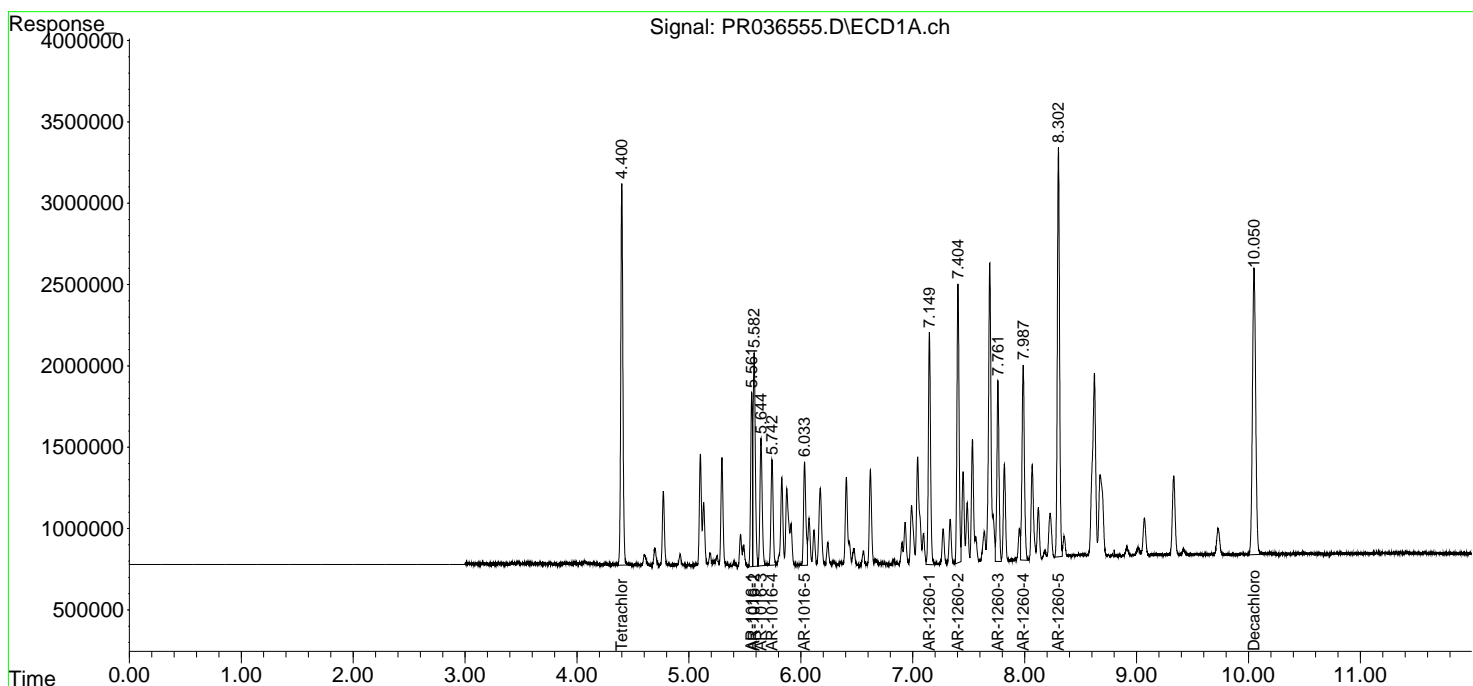
(f)=RT Delta > 1/2 Window (#)=Amounts differ by > 25% (m)=manual int.

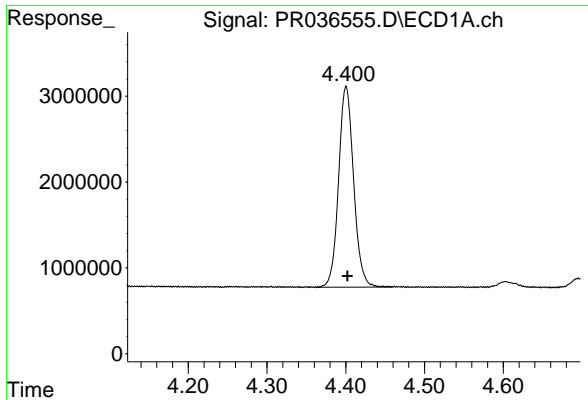
Data Path : Z:\pestpcbsrv\HPCHEM1\ECD_R\Data\PR032219\
 Data File : PR036555.D
 Signal(s) : Signal #1: ECD1A.ch Signal #2: ECD2B.ch
 Acq On : 22 Mar 2019 14:20
 Operator : SM\SJ
 Sample : PB118081BS
 Misc :
 ALS Vial : 12 Sample Multiplier: 1

Instrument :
 ECD_R
 ClientSampled :
 PB118081BS

Integration File signal 1: autoint1.e
 Integration File signal 2: autoint2.e
 Quant Time: Mar 22 22:34:07 2019
 Quant Method : Z:\pestpcbsrv\HPCHEM1\ECD_R\Method\PR032019.M
 Quant Title : GC EXTRACTABLES
 QLast Update : Wed Mar 20 15:19:33 2019
 Response via : Initial Calibration
 Integrator: ChemStation

Volume Inj. : 2 µl
 Signal #1 Phase : ZB-MR1 Signal #2 Phase: ZB-MR2
 Signal #1 Info : 30Mx0.32mmx 0.50µm Signal #2 Info : 30M x 0.32mm x 0.25µm

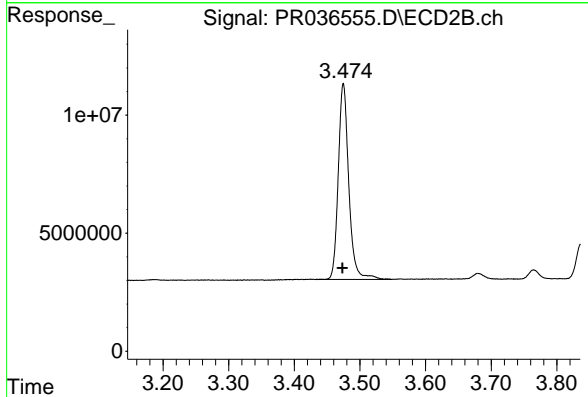




#1 Tetrachloro-m-xylene

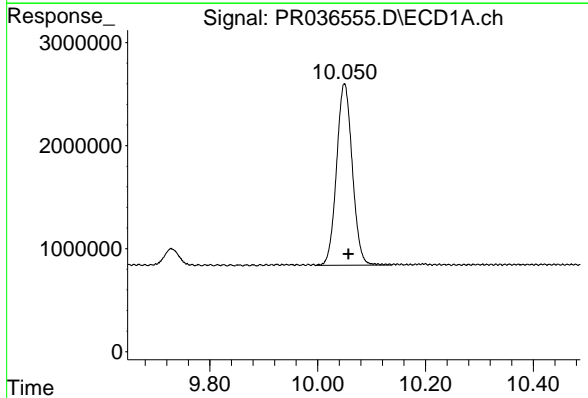
R.T.: 4.400 min
Delta R.T.: -0.002 min
Response: 31041906
Conc: 20.51 ng/ml

Instrument :
ECD_R
ClientSampleId :
PB118081BS



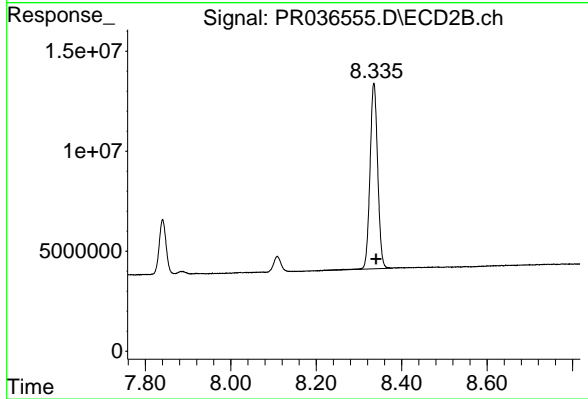
#1 Tetrachloro-m-xylene

R.T.: 3.475 min
Delta R.T.: 0.001 min
Response: 92255108
Conc: 22.50 ng/ml



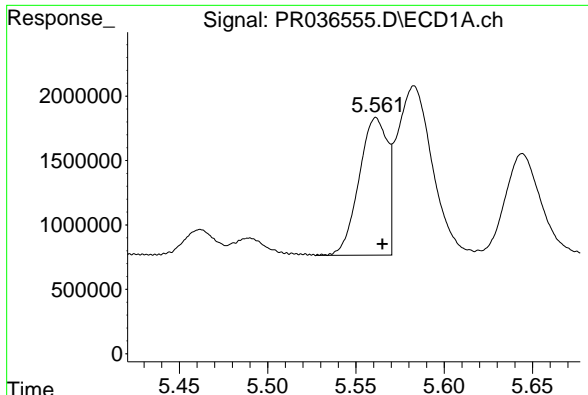
#2 Decachlorobiphenyl

R.T.: 10.050 min
Delta R.T.: -0.007 min
Response: 35673912
Conc: 20.35 ng/ml



#2 Decachlorobiphenyl

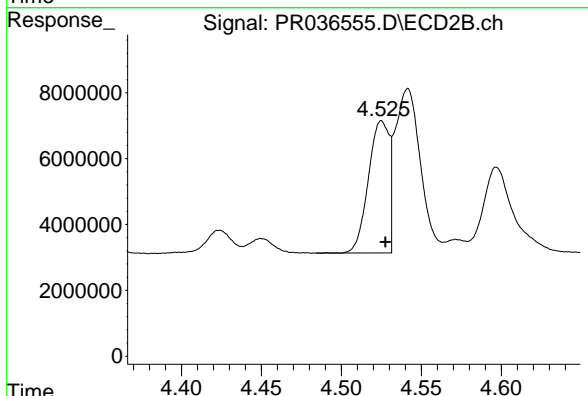
R.T.: 8.335 min
Delta R.T.: -0.005 min
Response: 115537369
Conc: 20.88 ng/ml



#3 AR-1016-1

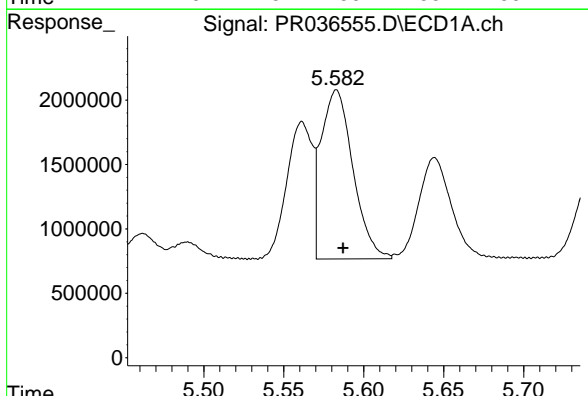
R.T.: 5.561 min
 Delta R.T.: -0.004 min
 Response: 11961330
 Conc: 200.69 ng/ml

Instrument :
 ECD_R
 ClientSampleId :
 PB118081BS



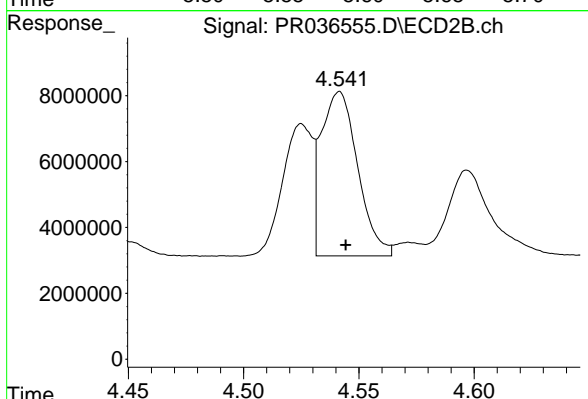
#3 AR-1016-1

R.T.: 4.525 min
 Delta R.T.: -0.002 min
 Response: 36133244
 Conc: 220.73 ng/ml



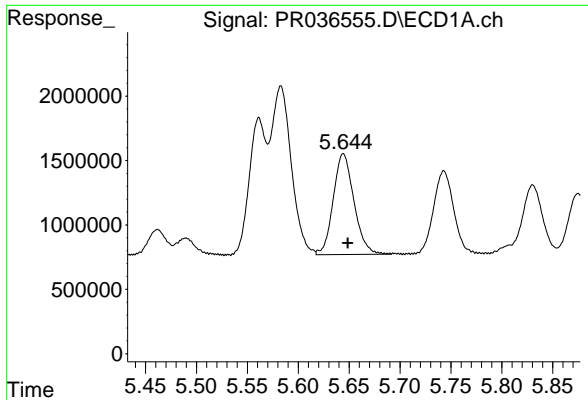
#4 AR-1016-2

R.T.: 5.583 min
 Delta R.T.: -0.004 min
 Response: 18180099
 Conc: 187.30 ng/ml



#4 AR-1016-2

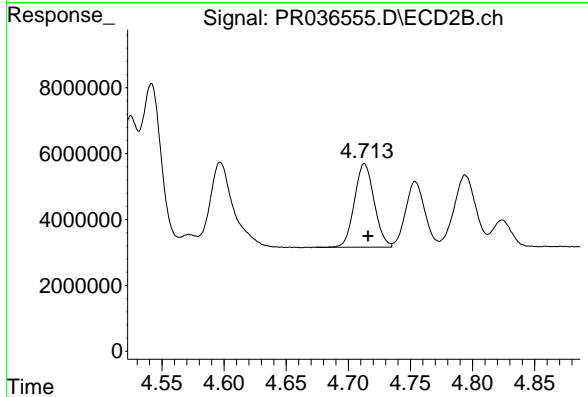
R.T.: 4.542 min
 Delta R.T.: -0.003 min
 Response: 55141725
 Conc: 206.16 ng/ml



#5 AR-1016-3

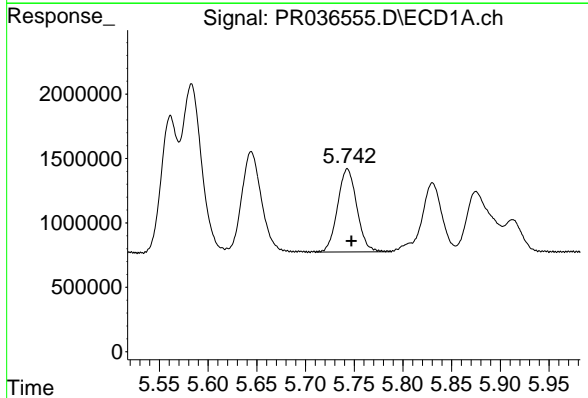
R.T.: 5.644 min
Delta R.T.: -0.004 min
Response: 11073454
Conc: 191.87 ng/ml

Instrument :
ECD_R
ClientSampleId :
PB118081BS



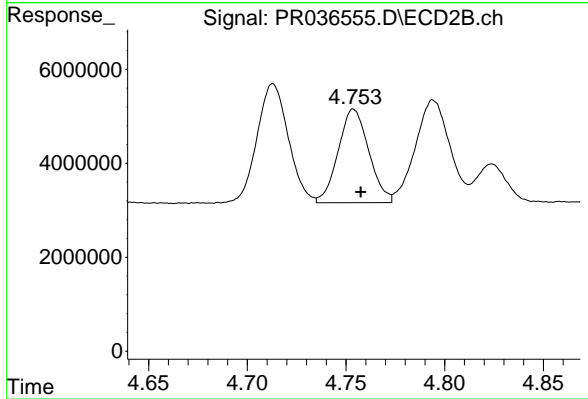
#5 AR-1016-3

R.T.: 4.713 min
Delta R.T.: -0.003 min
Response: 28001688
Conc: 209.98 ng/ml



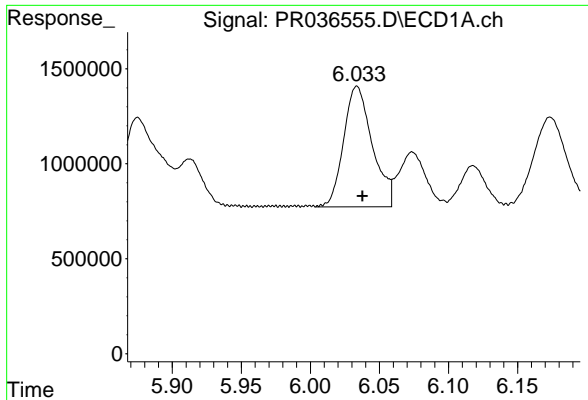
#6 AR-1016-4

R.T.: 5.743 min
Delta R.T.: -0.004 min
Response: 8897473
Conc: 187.71 ng/ml



#6 AR-1016-4

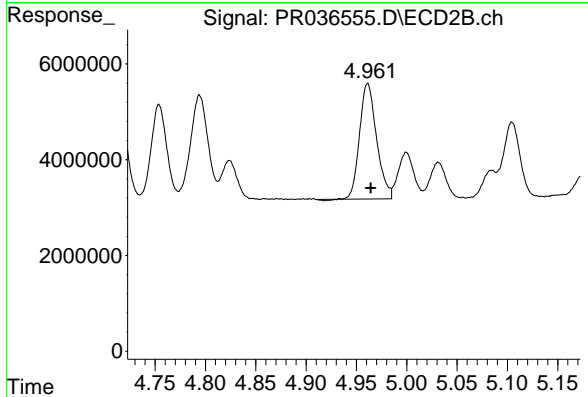
R.T.: 4.754 min
Delta R.T.: -0.004 min
Response: 21505498
Conc: 209.57 ng/ml



#7 AR-1016-5

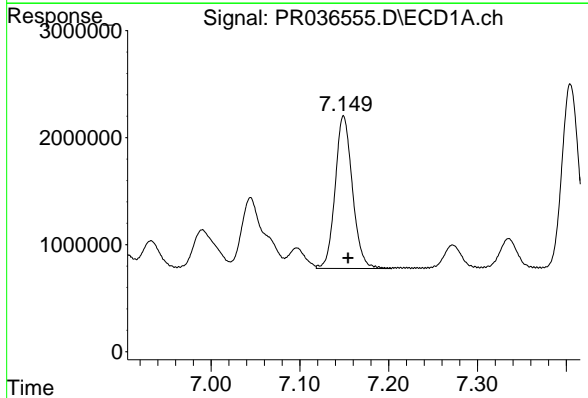
R.T.: 6.034 min
 Delta R.T.: -0.004 min
 Response: 9176562
 Conc: 185.29 ng/ml

Instrument :
 ECD_R
 ClientSampleId :
 PB118081BS



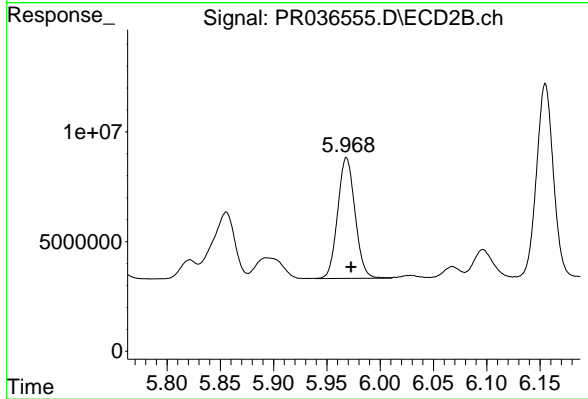
#7 AR-1016-5

R.T.: 4.961 min
 Delta R.T.: -0.003 min
 Response: 28453205
 Conc: 200.23 ng/ml



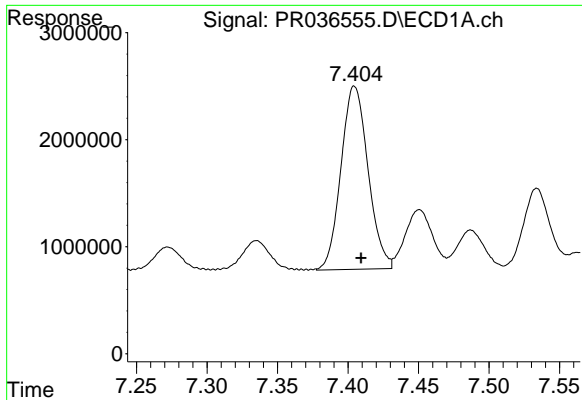
#31 AR-1260-1

R.T.: 7.149 min
 Delta R.T.: -0.005 min
 Response: 19273846
 Conc: 204.48 ng/ml



#31 AR-1260-1

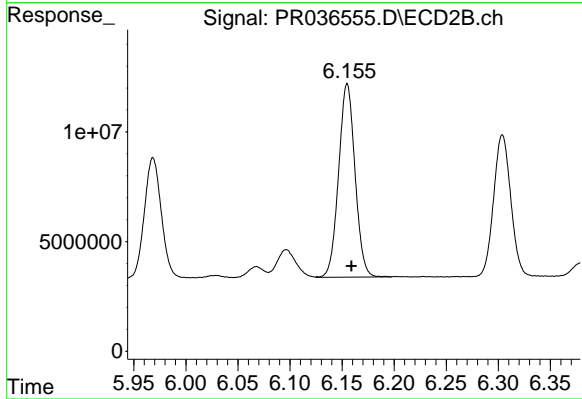
R.T.: 5.968 min
 Delta R.T.: -0.004 min
 Response: 62434862
 Conc: 209.43 ng/ml



#32 AR-1260-2

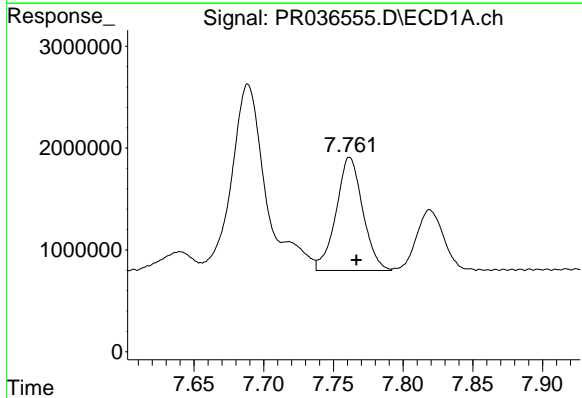
R.T.: 7.405 min
Delta R.T.: -0.005 min
Response: 22863325
Conc: 200.37 ng/ml

Instrument :
ECD_R
ClientSampleId :
PB118081BS



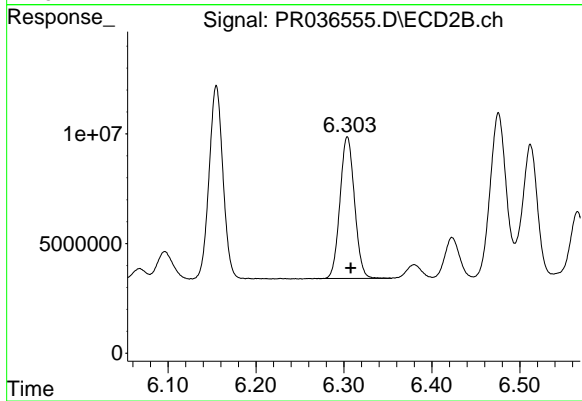
#32 AR-1260-2

R.T.: 6.155 min
Delta R.T.: -0.004 min
Response: 96713831
Conc: 217.30 ng/ml



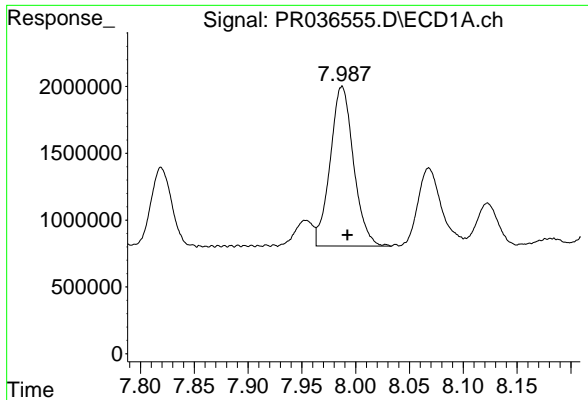
#33 AR-1260-3

R.T.: 7.762 min
Delta R.T.: -0.005 min
Response: 14832106
Conc: 165.80 ng/ml



#33 AR-1260-3

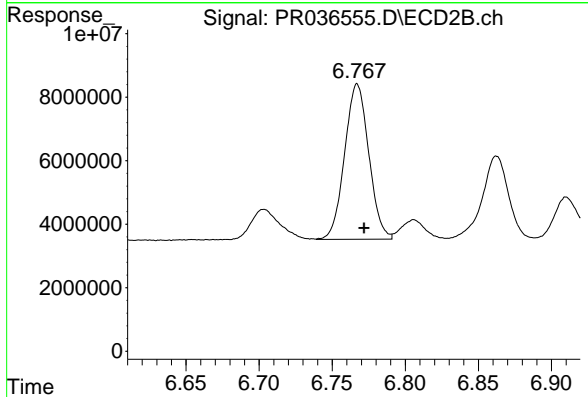
R.T.: 6.304 min
Delta R.T.: -0.004 min
Response: 74105825
Conc: 205.50 ng/ml



#34 AR-1260-4

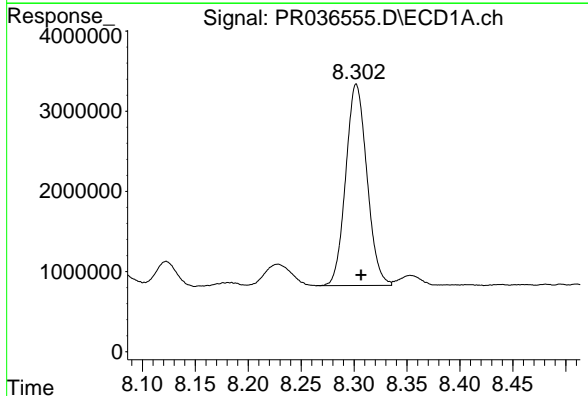
R.T.: 7.987 min
 Delta R.T.: -0.005 min
 Response: 18069953
 Conc: 176.31 ng/ml

Instrument :
 ECD_R
 ClientSampleId :
 PB118081BS



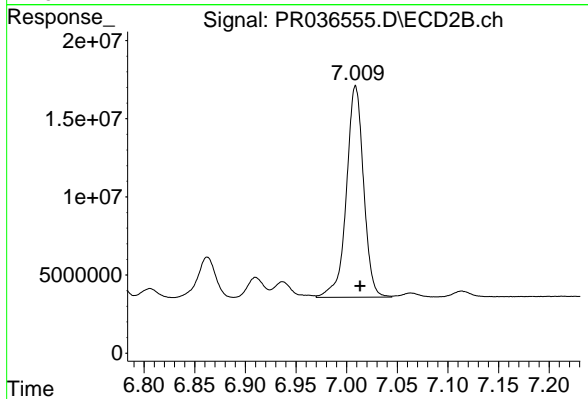
#34 AR-1260-4

R.T.: 6.767 min
 Delta R.T.: -0.005 min
 Response: 56316749
 Conc: 179.48 ng/ml



#35 AR-1260-5

R.T.: 8.302 min
 Delta R.T.: -0.005 min
 Response: 35030887
 Conc: 175.37 ng/ml



#35 AR-1260-5

R.T.: 7.009 min
 Delta R.T.: -0.004 min
 Response: 159429227
 Conc: 174.15 ng/ml