

Data Path : Z:\pestpcbsrv\HPCHEM1\ECD_R\Data\PR032219\
 Data File : PR036586.D
 Signal(s) : Signal #1: ECD1A.ch Signal #2: ECD2B.ch
 Acq On : 22 Mar 2019 22:03
 Operator : SM\SJ
 Sample : K2002-03MSD
 Misc :
 ALS Vial : 25 Sample Multiplier: 1

Instrument :
 ECD_R
ClientSampleId :
 S-2(5-30)-COMPMSD

Manual Integrations
APPROVED
 Sohil
 3/26/2019 9:17:10 AM

Integration File signal 1: autoint1.e
 Integration File signal 2: autoint2.e
 Quant Time: Mar 22 22:47:43 2019
 Quant Method : Z:\pestpcbsrv\HPCHEM1\ECD_R\Method\PR032019.M
 Quant Title : GC EXTRACTABLES
 QLast Update : Wed Mar 20 15:19:33 2019
 Response via : Initial Calibration
 Integrator: ChemStation

Volume Inj. : 2 µl
 Signal #1 Phase : ZB-MR1 Signal #2 Phase: ZB-MR2
 Signal #1 Info : 30Mx0.32mmx 0.50µ Signal #2 Info : 30M x 0.32mm x 0.25µm

Compound	RT#1	RT#2	Resp#1	Resp#2	ng/ml	ng/ml

System Monitoring Compounds						
1) SA Tetrachlo...	4.399	3.474	38019893	105.7E6	25.120	25.767
2) SA Decachlor...	10.049	8.335	26703226	79190065	15.235	14.314
Target Compounds						
3) L1 AR-1016-1	5.560	4.525	15772169	45865175	264.632	280.186
4) L1 AR-1016-2	5.582	4.541	24343065	69946749	250.792	261.515
5) L1 AR-1016-3	5.643	4.712	14478547	35394352	250.869	265.411
6) L1 AR-1016-4	5.742	4.754	11746491	26865870	247.818	261.804
7) L1 AR-1016-5	6.033	4.960	11496118	35380881	232.126	248.985m
31) L7 AR-1260-1	7.149	5.968	21586008	73591716	229.010	246.856
32) L7 AR-1260-2	7.404	6.155	26031925	106.2E6	228.144	238.695
33) L7 AR-1260-3	7.761	6.304	16248885	85596448	181.641	237.363 #
34) L7 AR-1260-4	7.986	6.766	19767655	59937762	192.869	191.020
35) L7 AR-1260-5	8.301	7.009	36806827	165.3E6	184.263	180.595

(f)=RT Delta > 1/2 Window (#)=Amounts differ by > 25% (m)=manual int.

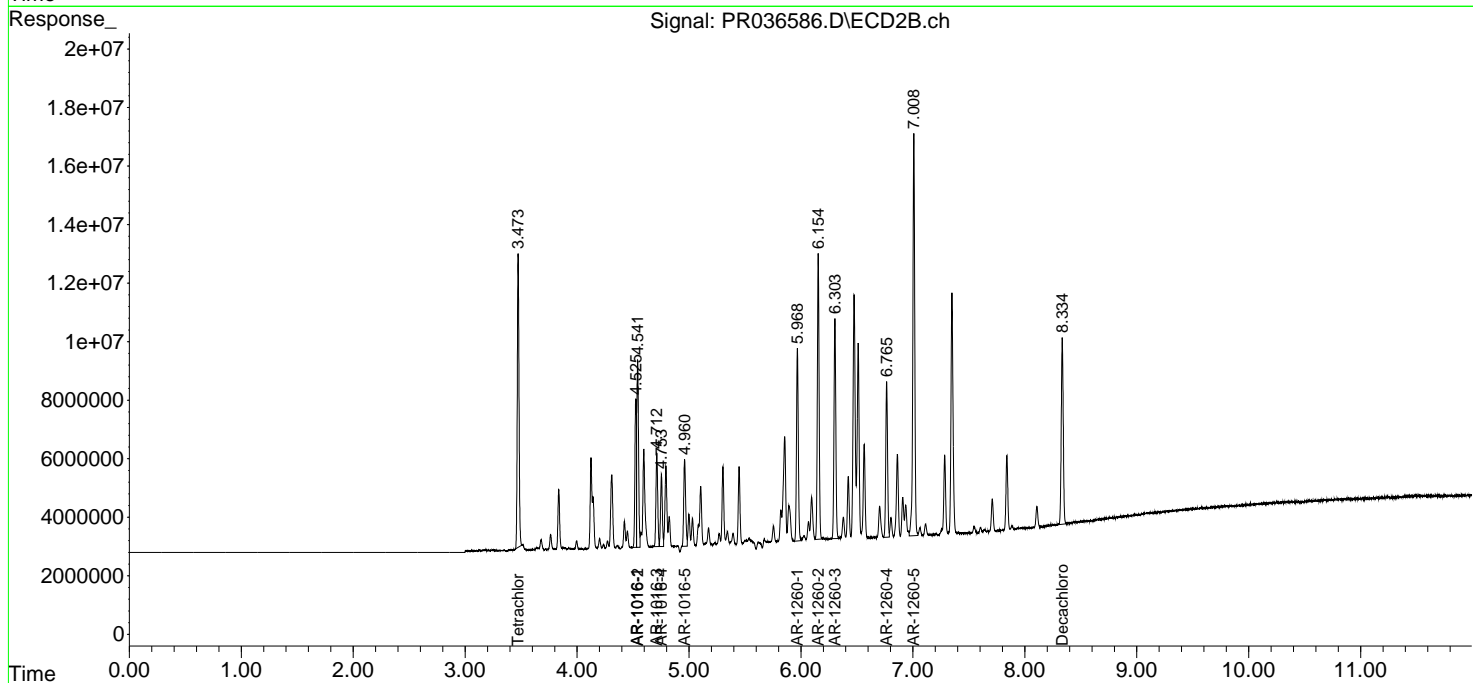
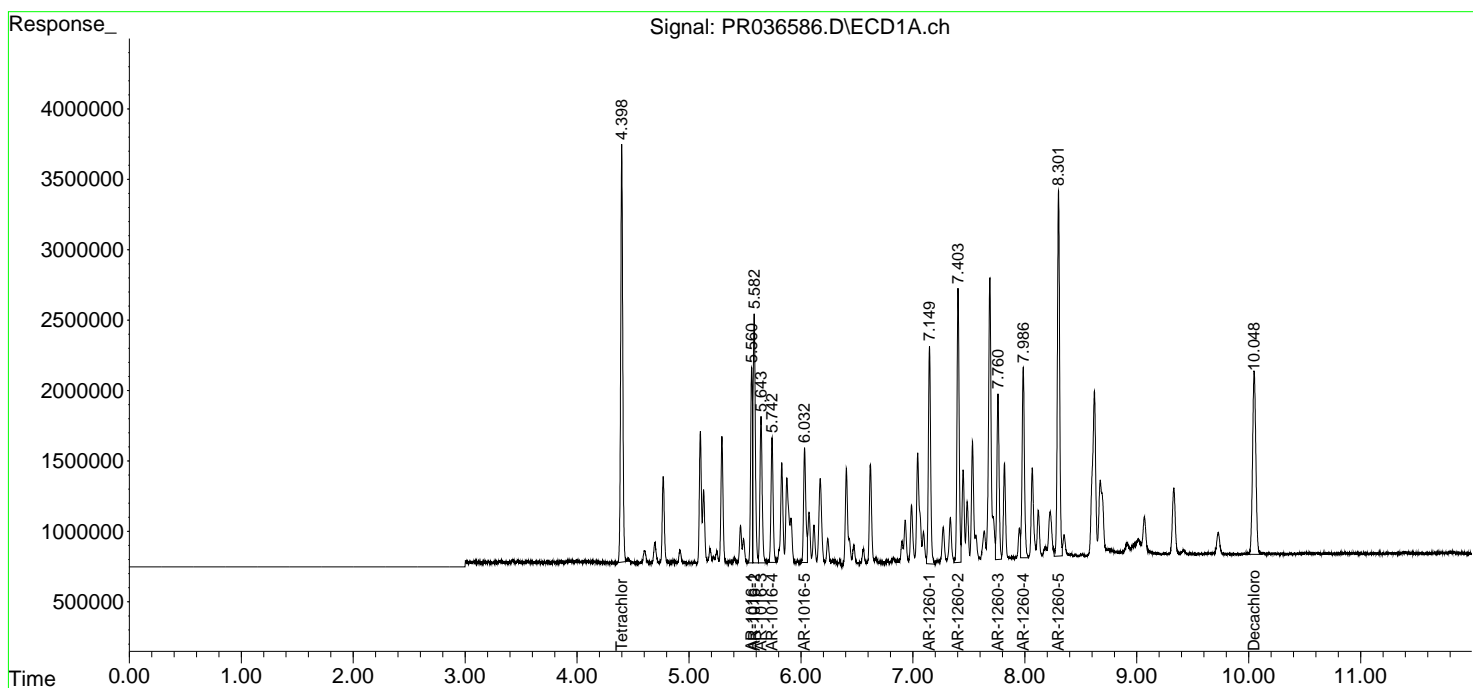
Data Path : Z:\pestpcbsrv\HPCHEM1\ECD_R\Data\PR032219\
 Data File : PR036586.D
 Signal(s) : Signal #1: ECD1A.ch Signal #2: ECD2B.ch
 Acq On : 22 Mar 2019 22:03
 Operator : SM\SJ
 Sample : K2002-03MSD
 Misc :
 ALS Vial : 25 Sample Multiplier: 1

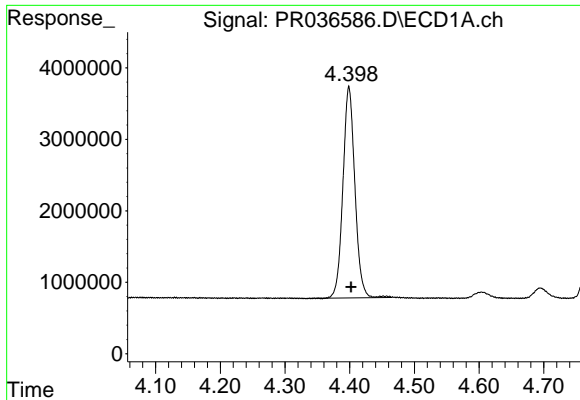
Instrument :
 ECD_R
Client Sampled :
 S-2(5-30)-COMPMSD

Manual Integrations
APPROVED
 Sohil
 3/26/2019 9:17:10 AM

Integration File signal 1: autoint1.e
 Integration File signal 2: autoint2.e
 Quant Time: Mar 22 22:47:43 2019
 Quant Method : Z:\pestpcbsrv\HPCHEM1\ECD_R\Method\PR032019.M
 Quant Title : GC EXTRACTABLES
 QLast Update : Wed Mar 20 15:19:33 2019
 Response via : Initial Calibration
 Integrator: ChemStation

Volume Inj. : 2 µl
 Signal #1 Phase : ZB-MR1 Signal #2 Phase: ZB-MR2
 Signal #1 Info : 30Mx0.32mmx 0.50µ Signal #2 Info : 30M x 0.32mm x 0.25µm

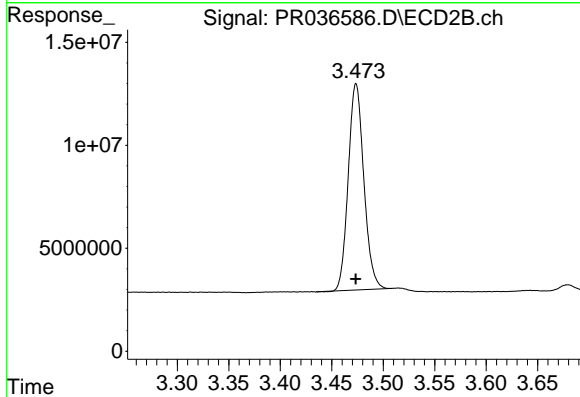




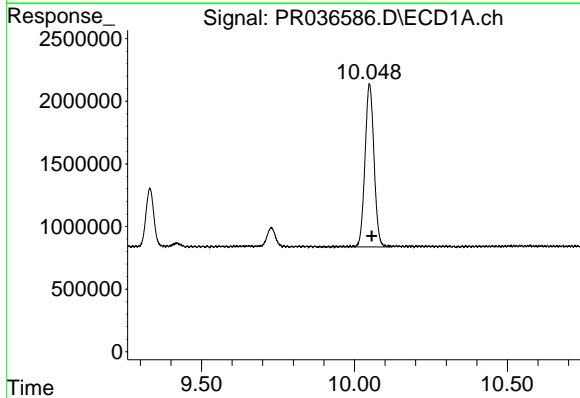
#1 Tetrachloro-m-xylene
 R.T.: 4.399 min
 Delta R.T.: -0.003 min
 Response: 38019893
 Conc: 25.12 ng/ml

Instrument :
 ECD_R
ClientSampled :
 S-2(5-30)-COMPMSD

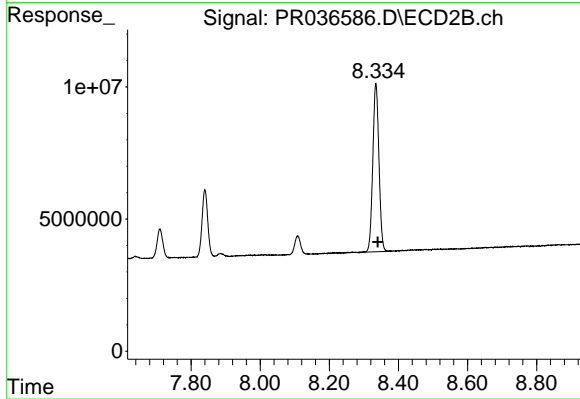
Manual Integrations
APPROVED
 Sohil
 3/26/2019 9:17:10 AM



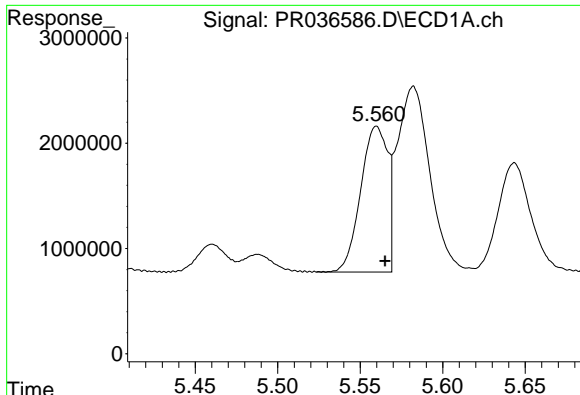
#1 Tetrachloro-m-xylene
 R.T.: 3.474 min
 Delta R.T.: 0.000 min
 Response: 105654281
 Conc: 25.77 ng/ml



#2 Decachlorobiphenyl
 R.T.: 10.049 min
 Delta R.T.: -0.008 min
 Response: 26703226
 Conc: 15.23 ng/ml



#2 Decachlorobiphenyl
 R.T.: 8.335 min
 Delta R.T.: -0.005 min
 Response: 79190065
 Conc: 14.31 ng/ml

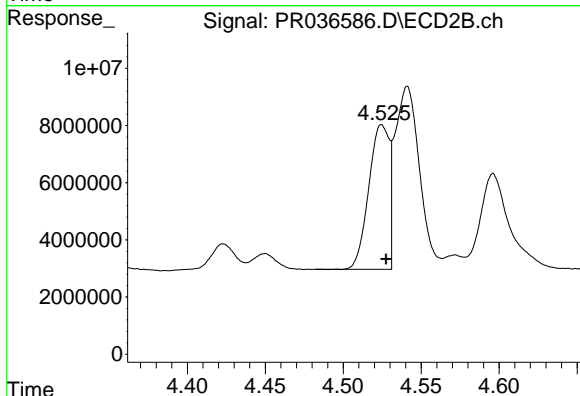


#3 AR-1016-1

R.T.: 5.560 min
 Delta R.T.: -0.005 min
 Response: 15772169
 Conc: 264.63 ng/ml

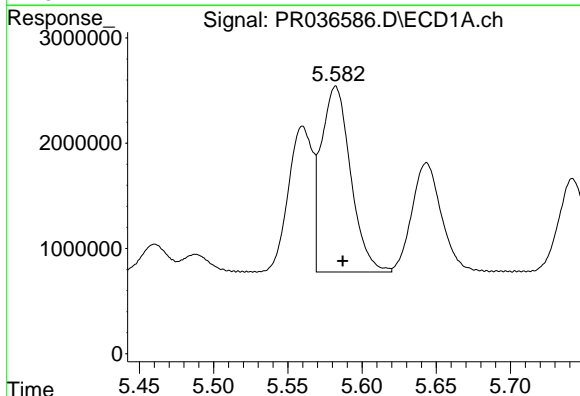
Instrument :
 ECD_R
ClientSampled :
 S-2(5-30)-COMPMSD

Manual Integrations
APPROVED
 Sohil
 3/26/2019 9:17:10 AM



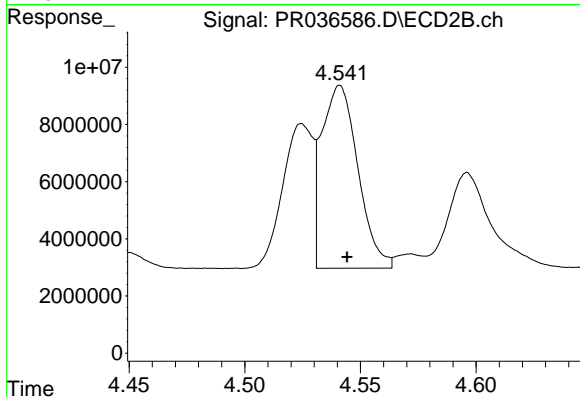
#3 AR-1016-1

R.T.: 4.525 min
 Delta R.T.: -0.003 min
 Response: 45865175
 Conc: 280.19 ng/ml



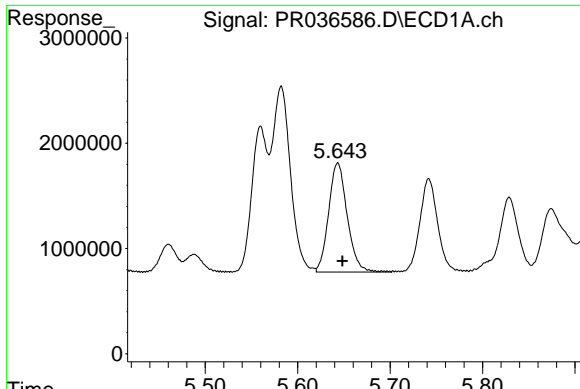
#4 AR-1016-2

R.T.: 5.582 min
 Delta R.T.: -0.005 min
 Response: 24343065
 Conc: 250.79 ng/ml



#4 AR-1016-2

R.T.: 4.541 min
 Delta R.T.: -0.003 min
 Response: 69946749
 Conc: 261.51 ng/ml

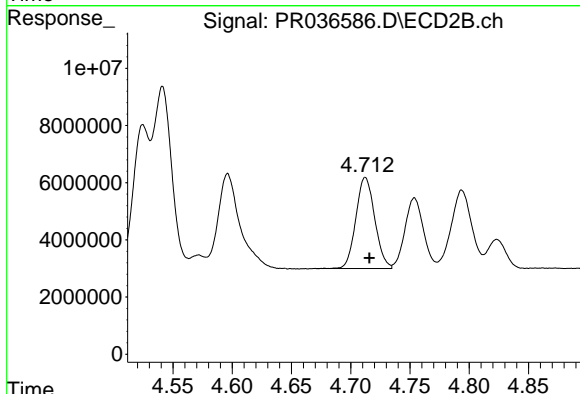


#5 AR-1016-3

R.T.: 5.643 min
 Delta R.T.: -0.005 min
 Response: 14478547
 Conc: 250.87 ng/ml

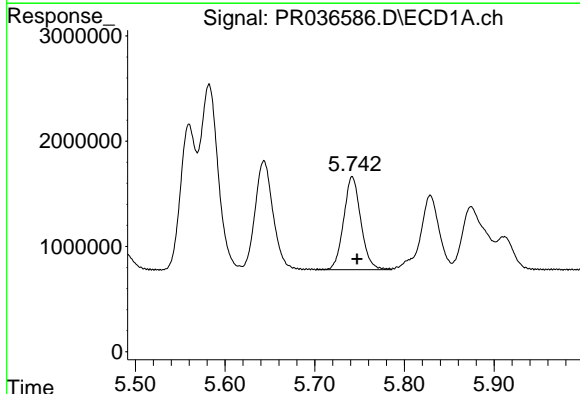
Instrument :
 ECD_R
ClientSampled :
 S-2(5-30)-COMPMSD

Manual Integrations
APPROVED
 Sohil
 3/26/2019 9:17:10 AM



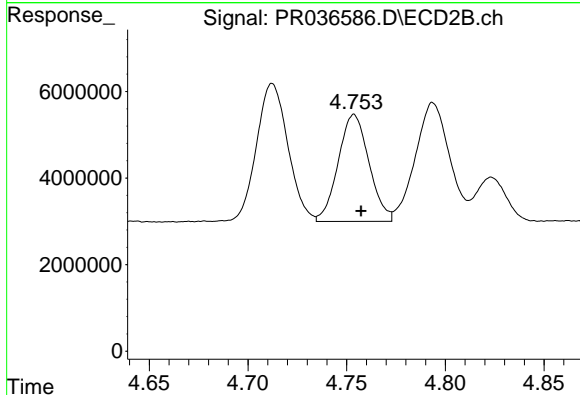
#5 AR-1016-3

R.T.: 4.712 min
 Delta R.T.: -0.003 min
 Response: 35394352
 Conc: 265.41 ng/ml



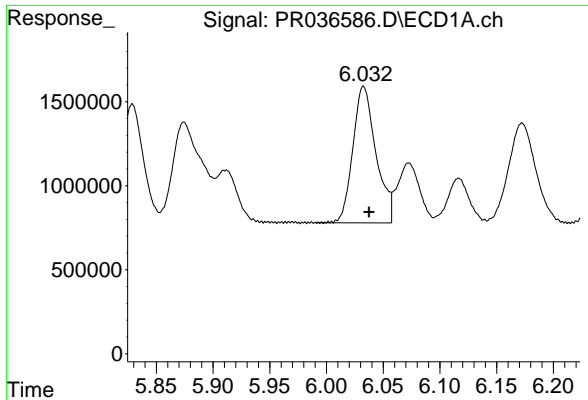
#6 AR-1016-4

R.T.: 5.742 min
 Delta R.T.: -0.005 min
 Response: 11746491
 Conc: 247.82 ng/ml



#6 AR-1016-4

R.T.: 4.754 min
 Delta R.T.: -0.004 min
 Response: 26865870
 Conc: 261.80 ng/ml

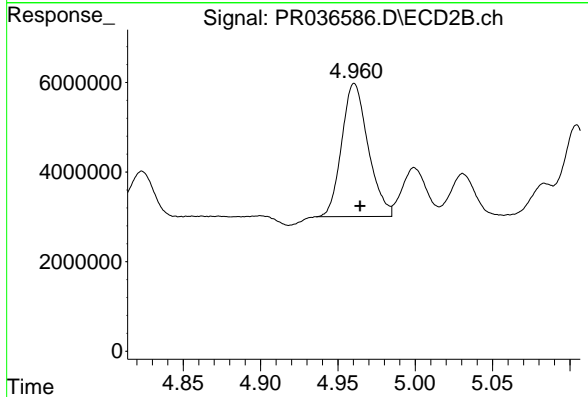


#7 AR-1016-5

R.T.: 6.033 min
 Delta R.T.: -0.005 min
 Response: 11496118
 Conc: 232.13 ng/ml

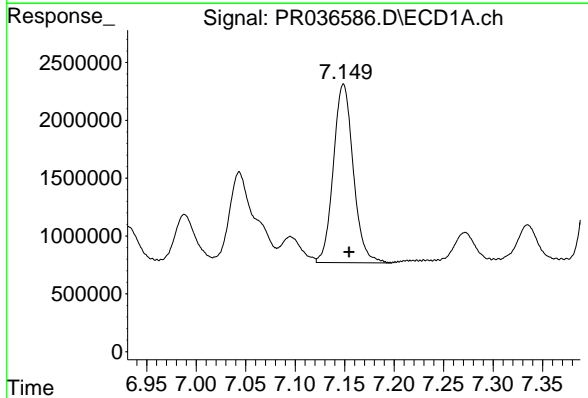
Instrument :
 ECD_R
ClientSampled :
 S-2(5-30)-COMPMSD

Manual Integrations
APPROVED
 Sohil
 3/26/2019 9:17:10 AM



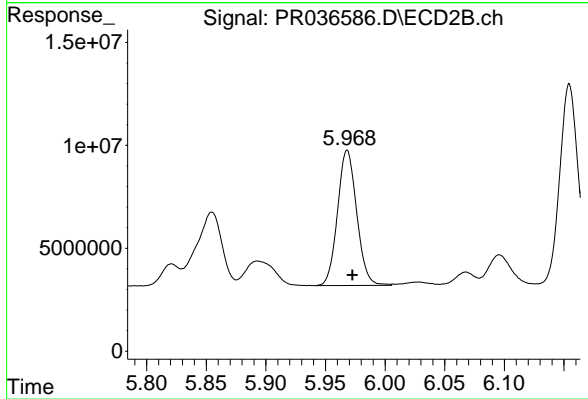
#7 AR-1016-5

R.T.: 4.960 min
 Delta R.T.: -0.004 min
 Response: 35380881
 Conc: 248.98 ng/ml m



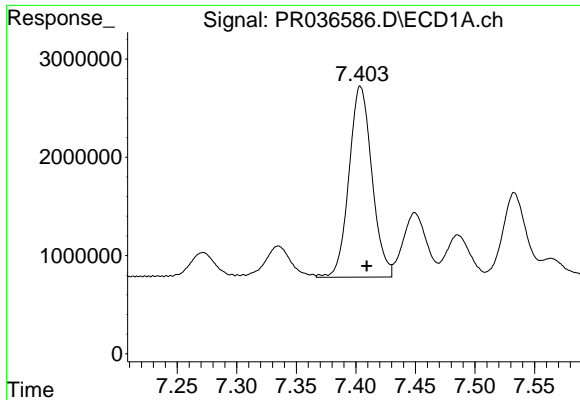
#31 AR-1260-1

R.T.: 7.149 min
 Delta R.T.: -0.005 min
 Response: 21586008
 Conc: 229.01 ng/ml



#31 AR-1260-1

R.T.: 5.968 min
 Delta R.T.: -0.004 min
 Response: 73591716
 Conc: 246.86 ng/ml

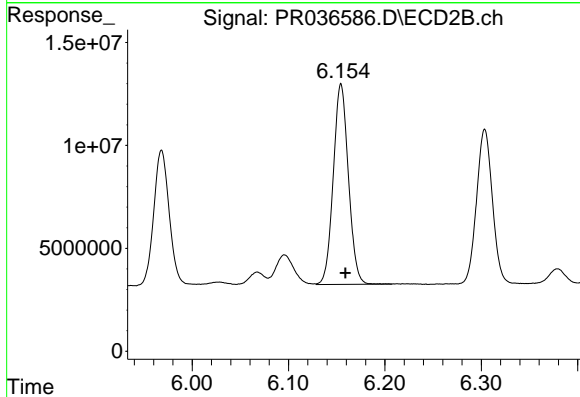


#32 AR-1260-2

R.T.: 7.404 min
 Delta R.T.: -0.005 min
 Response: 26031925
 Conc: 228.14 ng/ml

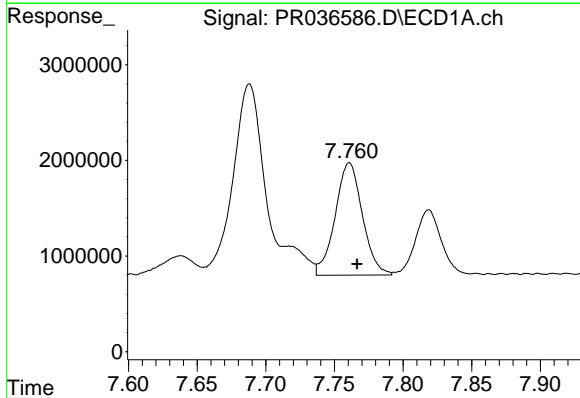
Instrument :
 ECD_R
ClientSampled :
 S-2(5-30)-COMPMSD

Manual Integrations
APPROVED
 Sohil
 3/26/2019 9:17:10 AM



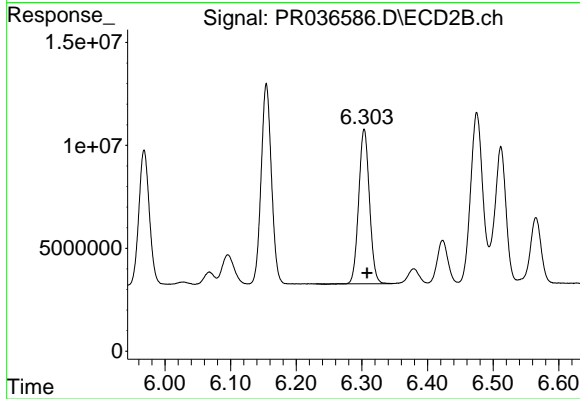
#32 AR-1260-2

R.T.: 6.155 min
 Delta R.T.: -0.004 min
 Response: 106237779
 Conc: 238.69 ng/ml



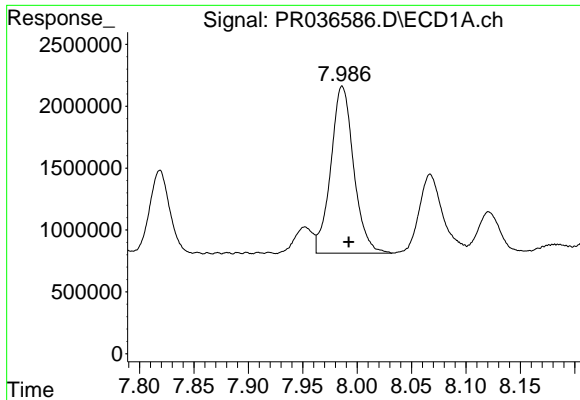
#33 AR-1260-3

R.T.: 7.761 min
 Delta R.T.: -0.006 min
 Response: 16248885
 Conc: 181.64 ng/ml



#33 AR-1260-3

R.T.: 6.304 min
 Delta R.T.: -0.004 min
 Response: 85596448
 Conc: 237.36 ng/ml

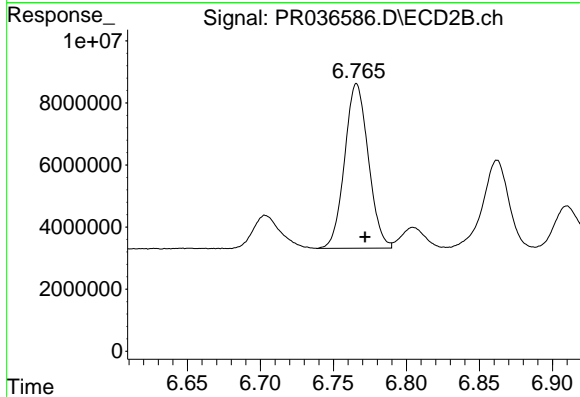


#34 AR-1260-4

R.T.: 7.986 min
 Delta R.T.: -0.006 min
 Response: 19767655
 Conc: 192.87 ng/ml

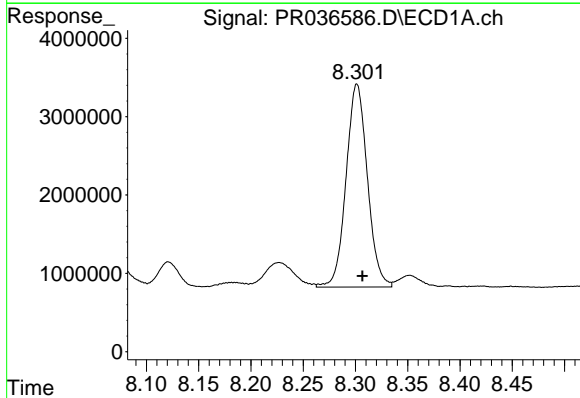
Instrument :
 ECD_R
ClientSampled :
 S-2(5-30)-COMPMSD

Manual Integrations
APPROVED
 Sohil
 3/26/2019 9:17:10 AM



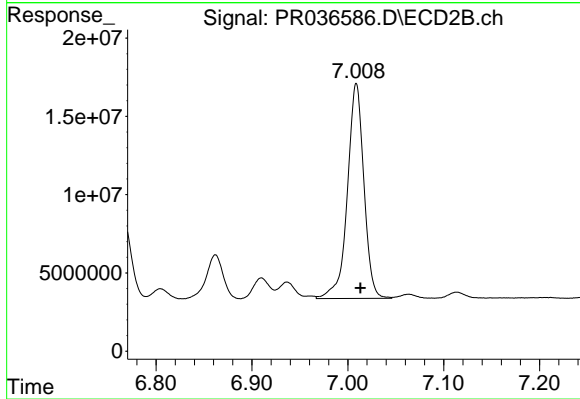
#34 AR-1260-4

R.T.: 6.766 min
 Delta R.T.: -0.006 min
 Response: 59937762
 Conc: 191.02 ng/ml



#35 AR-1260-5

R.T.: 8.301 min
 Delta R.T.: -0.005 min
 Response: 36806827
 Conc: 184.26 ng/ml



#35 AR-1260-5

R.T.: 7.009 min
 Delta R.T.: -0.004 min
 Response: 165332870
 Conc: 180.60 ng/ml