

Data Path : Z:\pestpcbsrv\HPCHEM1\ECD\_R\Data\PR032219\  
 Data File : PR036589.D  
 Signal(s) : Signal #1: ECD1A.ch Signal #2: ECD2B.ch  
 Acq On : 22 Mar 2019 22:47  
 Operator : SM\SJ  
 Sample : K2036-06  
 Misc :  
 ALS Vial : 28 Sample Multiplier: 1

Instrument :  
 ECD\_R  
 ClientSampleId :  
 CSIMW-01-20190319

Integration File signal 1: autoint1.e  
 Integration File signal 2: autoint2.e  
 Quant Time: Mar 22 23:50:59 2019  
 Quant Method : Z:\pestpcbsrv\HPCHEM1\ECD\_R\Method\PR032019.M  
 Quant Title : GC EXTRACTABLES  
 QLast Update : Wed Mar 20 15:19:33 2019  
 Response via : Initial Calibration  
 Integrator: ChemStation

Volume Inj. : 2 µl  
 Signal #1 Phase : ZB-MR1 Signal #2 Phase: ZB-MR2  
 Signal #1 Info : 30Mx0.32mmx 0.50µ Signal #2 Info : 30M x 0.32mm x 0.25µm

Compound	RT#1	RT#2	Resp#1	Resp#2	ng/ml	ng/ml
-----						
System Monitoring Compounds						
1) SA Tetrachlo...	4.400	3.474	40453079	114.4E6	26.728	27.897
2) SA Decachlor...	10.050	8.334	34655409	107.1E6	19.772	19.354

Target Compounds

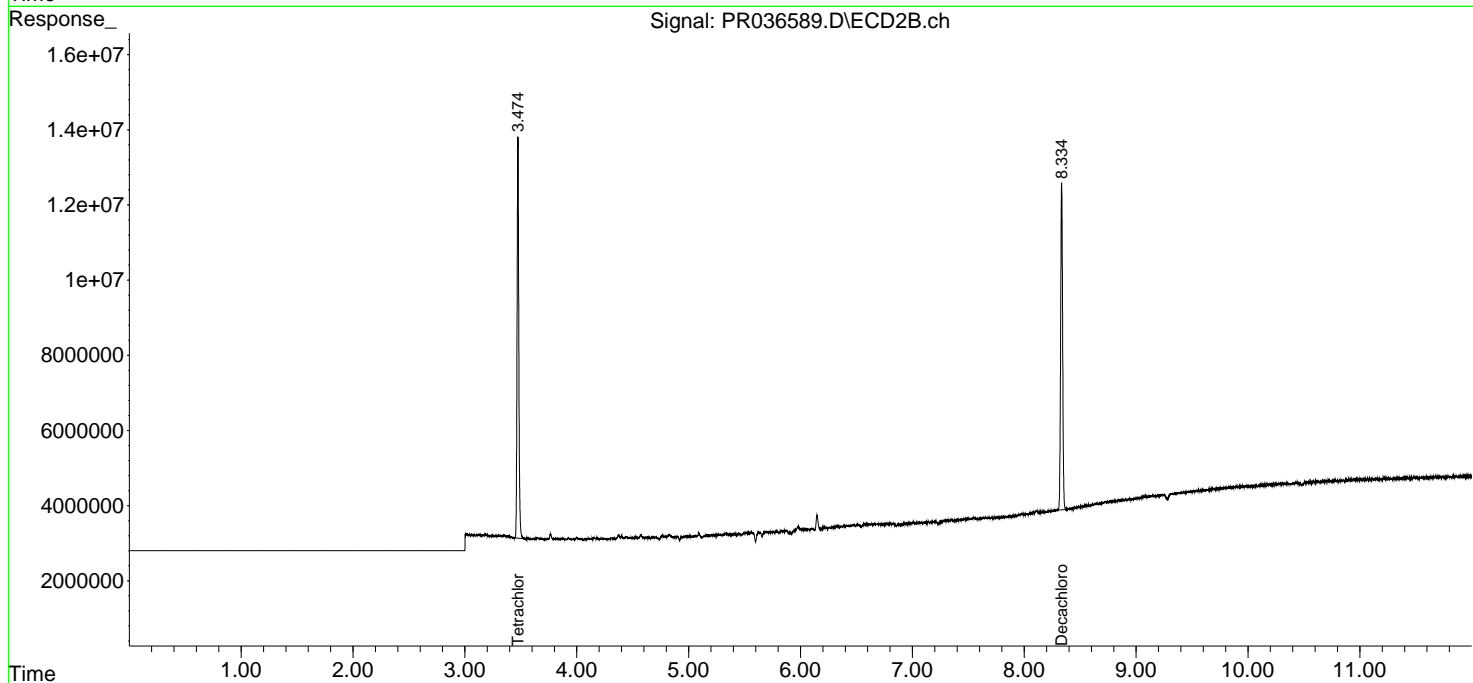
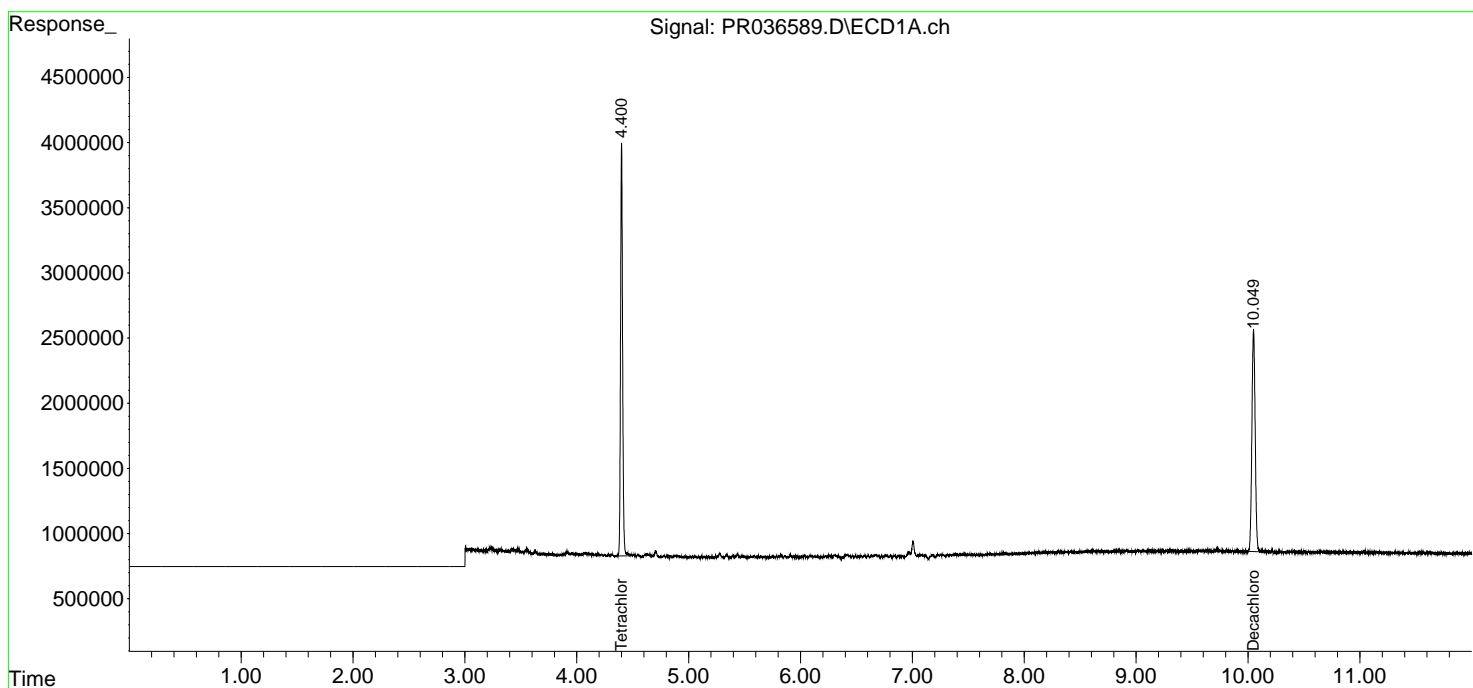
(f)=RT Delta > 1/2 Window (#)=Amounts differ by > 25% (m)=manual int.

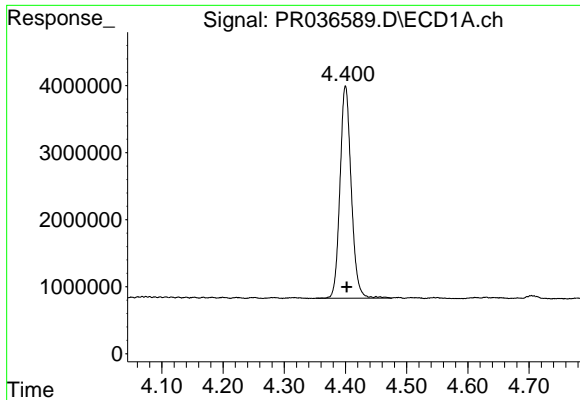
Data Path : Z:\pestpcbsrv\HPCHEM1\ECD\_R\Data\PR032219\  
 Data File : PR036589.D  
 Signal(s) : Signal #1: ECD1A.ch Signal #2: ECD2B.ch  
 Acq On : 22 Mar 2019 22:47  
 Operator : SM\SJ  
 Sample : K2036-06  
 Misc :  
 ALS Vial : 28 Sample Multiplier: 1

Instrument :  
 ECD\_R  
 ClientSampleId :  
 CSIMW-01-20190319

Integration File signal 1: autoint1.e  
 Integration File signal 2: autoint2.e  
 Quant Time: Mar 22 23:50:59 2019  
 Quant Method : Z:\pestpcbsrv\HPCHEM1\ECD\_R\Method\PR032019.M  
 Quant Title : GC EXTRACTABLES  
 QLast Update : Wed Mar 20 15:19:33 2019  
 Response via : Initial Calibration  
 Integrator: ChemStation

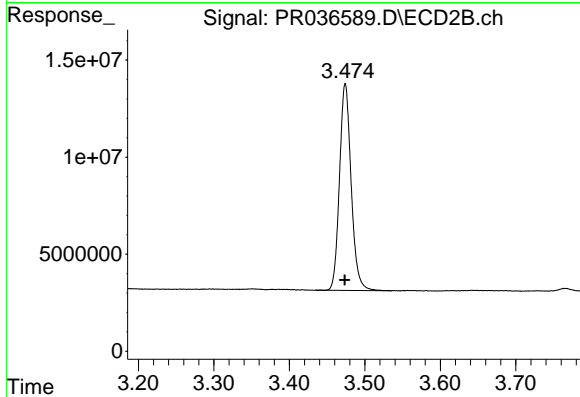
Volume Inj. : 2 µl  
 Signal #1 Phase : ZB-MR1 Signal #2 Phase: ZB-MR2  
 Signal #1 Info : 30Mx0.32mmx 0.50µ Signal #2 Info : 30M x 0.32mm x 0.25µm



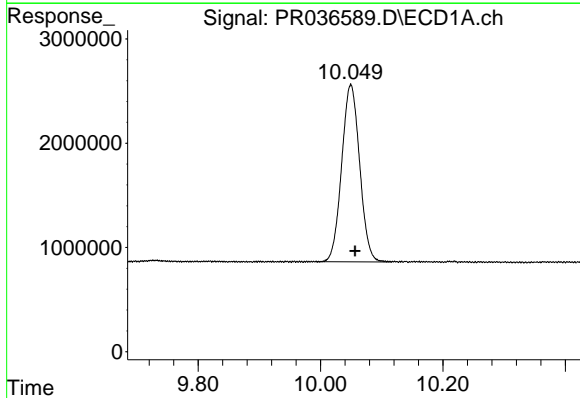


#1 Tetrachloro-m-xylene  
R.T.: 4.400 min  
Delta R.T.: -0.002 min  
Response: 40453079  
Conc: 26.73 ng/ml

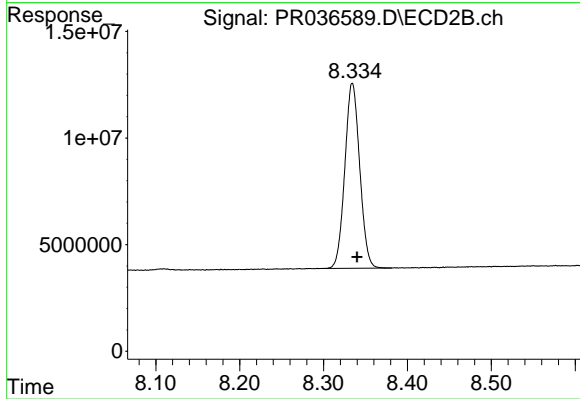
Instrument :  
ECD\_R  
ClientSampleId :  
CSIMW-01-20190319



#1 Tetrachloro-m-xylene  
R.T.: 3.474 min  
Delta R.T.: 0.000 min  
Response: 114390232  
Conc: 27.90 ng/ml



#2 Decachlorobiphenyl  
R.T.: 10.050 min  
Delta R.T.: -0.007 min  
Response: 34655409  
Conc: 19.77 ng/ml



#2 Decachlorobiphenyl  
R.T.: 8.334 min  
Delta R.T.: -0.006 min  
Response: 107071031  
Conc: 19.35 ng/ml