

Data Path : Z:\pestpcbsrv\HPCHEM1\ECD_R\Data\PR032219\
 Data File : PR036597.D
 Signal(s) : Signal #1: ECD1A.ch Signal #2: ECD2B.ch
 Acq On : 23 Mar 2019 00:42
 Operator : SM\SJ
 Sample : I.BLK
 Misc :
 ALS Vial : 2 Sample Multiplier: 1

Instrument :
 ECD_R
 ClientSampleId :
 I.BLK

Integration File signal 1: autoint1.e
 Integration File signal 2: autoint2.e
 Quant Time: Mar 23 01:39:28 2019
 Quant Method : Z:\pestpcbsrv\HPCHEM1\ECD_R\Method\PR032019.M
 Quant Title : GC EXTRACTABLES
 QLast Update : Wed Mar 20 15:19:33 2019
 Response via : Initial Calibration
 Integrator: ChemStation

Volume Inj. : 2 µl
 Signal #1 Phase : ZB-MR1 Signal #2 Phase: ZB-MR2
 Signal #1 Info : 30Mx0.32mmx 0.50µ Signal #2 Info : 30M x 0.32mm x 0.25µm

Compound	RT#1	RT#2	Resp#1	Resp#2	ng/ml	ng/ml

System Monitoring Compounds						
1) SA Tetrachlo...	4.399	3.475	36715754	110.0E6	24.259	26.838
2) SA Decachlor...	10.048	8.335	38115529	124.6E6	21.746	22.528

Target Compounds

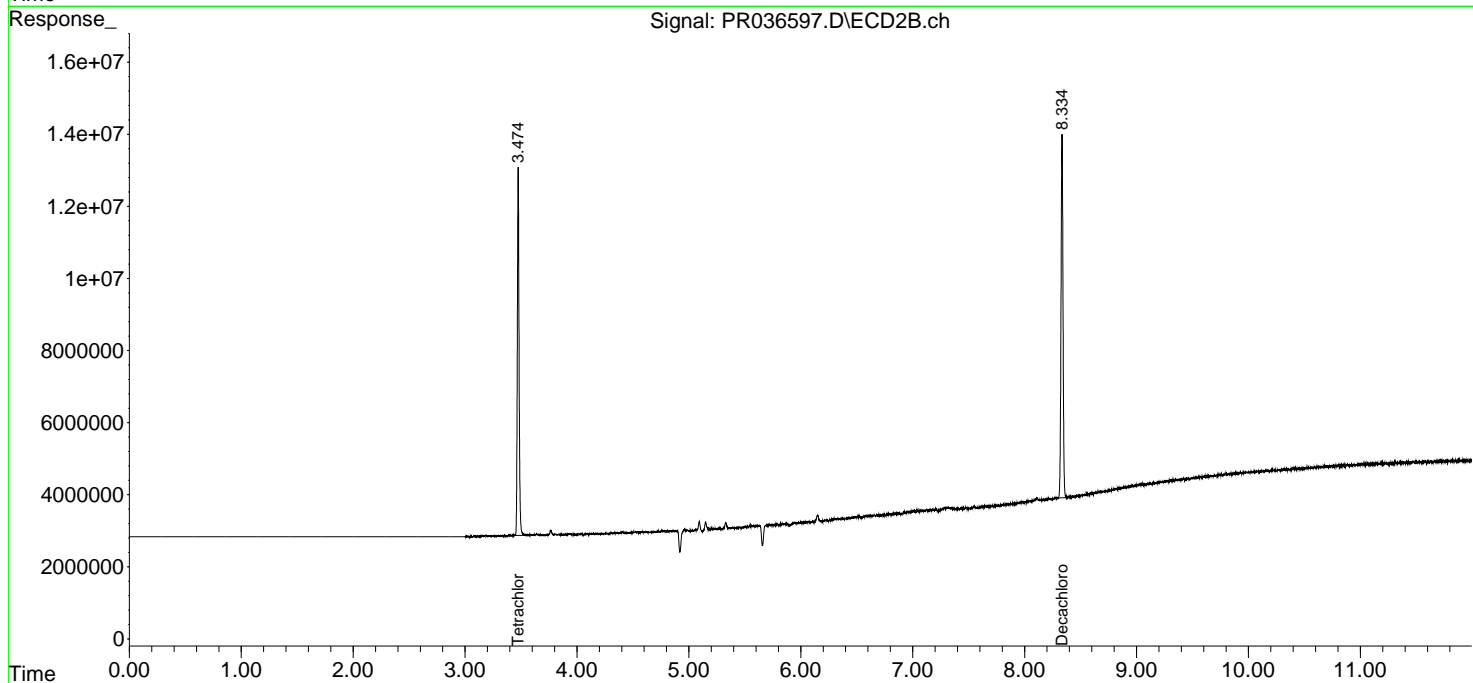
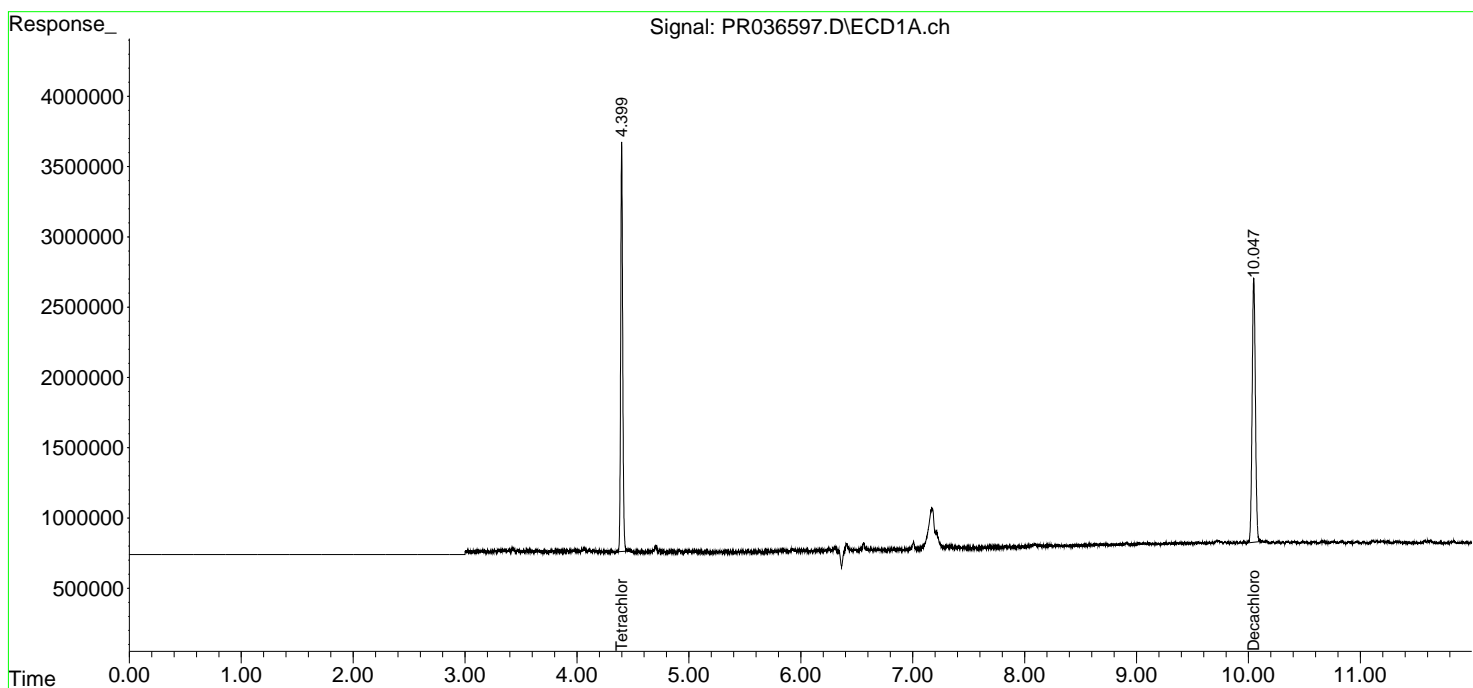
(f)=RT Delta > 1/2 Window (#)=Amounts differ by > 25% (m)=manual int.

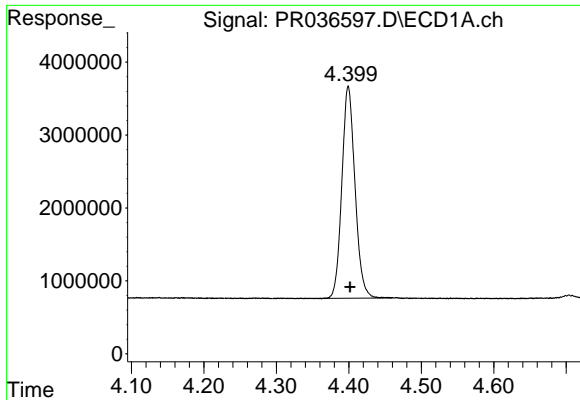
Data Path : Z:\pestpcbsrv\HPCHEM1\ECD_R\Data\PR032219\
 Data File : PR036597.D
 Signal(s) : Signal #1: ECD1A.ch Signal #2: ECD2B.ch
 Acq On : 23 Mar 2019 00:42
 Operator : SM\SJ
 Sample : I.BLK
 Misc :
 ALS Vial : 2 Sample Multiplier: 1

Instrument :
 ECD_R
 ClientSampleId :
 I.BLK

Integration File signal 1: autoint1.e
 Integration File signal 2: autoint2.e
 Quant Time: Mar 23 01:39:28 2019
 Quant Method : Z:\pestpcbsrv\HPCHEM1\ECD_R\Method\PR032019.M
 Quant Title : GC EXTRACTABLES
 QLast Update : Wed Mar 20 15:19:33 2019
 Response via : Initial Calibration
 Integrator: ChemStation

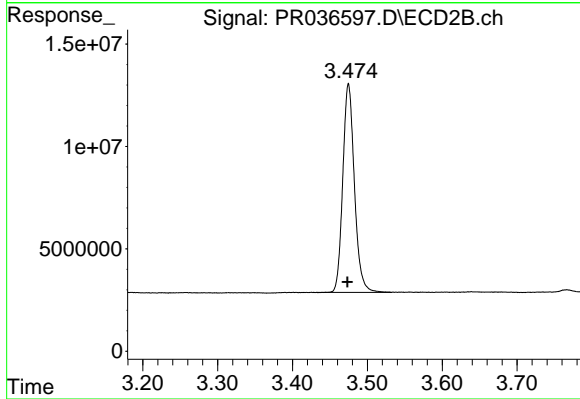
Volume Inj. : 2 µl
 Signal #1 Phase : ZB-MR1 Signal #2 Phase: ZB-MR2
 Signal #1 Info : 30Mx0.32mmx 0.50µ Signal #2 Info : 30M x 0.32mm x 0.25µm



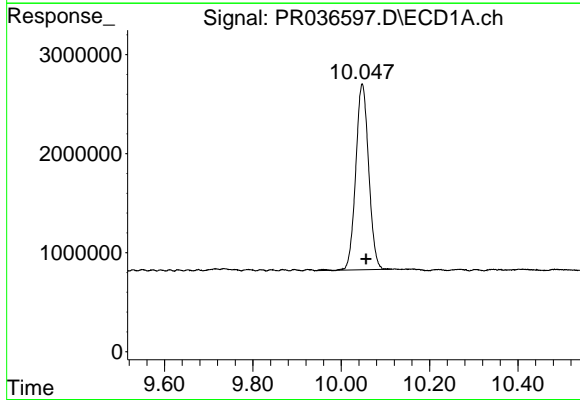


#1 Tetrachloro-m-xylene
R.T.: 4.399 min
Delta R.T.: -0.003 min
Response: 36715754
Conc: 24.26 ng/ml

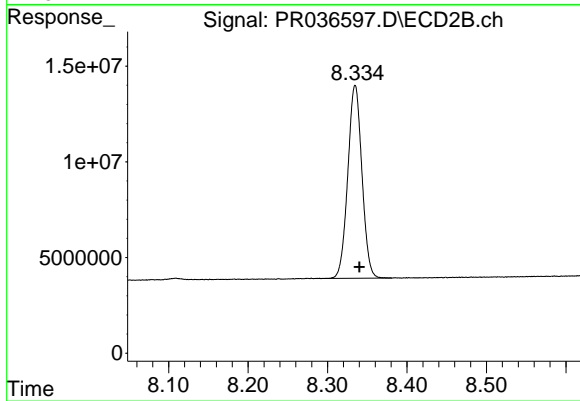
Instrument :
ECD_R
ClientSampled :
I.BLK



#1 Tetrachloro-m-xylene
R.T.: 3.475 min
Delta R.T.: 0.001 min
Response: 110047005
Conc: 26.84 ng/ml



#2 Decachlorobiphenyl
R.T.: 10.048 min
Delta R.T.: -0.009 min
Response: 38115529
Conc: 21.75 ng/ml



#2 Decachlorobiphenyl
R.T.: 8.335 min
Delta R.T.: -0.005 min
Response: 124635122
Conc: 22.53 ng/ml