

Data Path : Z:\pestpcbsrv\HPCHEM1\ECD_R\Data\PR032219\
 Data File : PR036605.D
 Signal(s) : Signal #1: ECD1A.ch Signal #2: ECD2B.ch
 Acq On : 23 Mar 2019 03:53
 Operator : SM\SJ
 Sample : K2040-01
 Misc :
 ALS Vial : 48 Sample Multiplier: 1

Instrument :
 ECD_R
ClientSampled :
 S4B(2-10)

Manual Integrations
APPROVED
 Sohil
 3/26/2019 9:17:15 AM

Integration File signal 1: autoint1.e
 Integration File signal 2: autoint2.e
 Quant Time: Mar 23 04:30:59 2019
 Quant Method : Z:\pestpcbsrv\HPCHEM1\ECD_R\Method\PR032019.M
 Quant Title : GC EXTRACTABLES
 QLast Update : Wed Mar 20 15:19:33 2019
 Response via : Initial Calibration
 Integrator: ChemStation

Volume Inj. : 2 µl
 Signal #1 Phase : ZB-MR1 Signal #2 Phase: ZB-MR2
 Signal #1 Info : 30Mx0.32mmx 0.50µ Signal #2 Info : 30M x 0.32mm x 0.25µm

Compound	RT#1	RT#2	Resp#1	Resp#2	ng/ml	ng/ml

System Monitoring Compounds						
1) SA Tetrachlo...	4.400	3.477	44582217	134.8E6	29.456	32.876
2) SA Decachlor...	10.047	8.333	43080409	131.0E6	24.578	23.686m

Target Compounds

(f)=RT Delta > 1/2 Window (#)=Amounts differ by > 25% (m)=manual int.

Data Path : Z:\pestpcbsrv\HPCHEM1\ECD_R\Data\PR032219\
 Data File : PR036605.D
 Signal(s) : Signal #1: ECD1A.ch Signal #2: ECD2B.ch
 Acq On : 23 Mar 2019 03:53
 Operator : SM\SJ
 Sample : K2040-01
 Misc :
 ALS Vial : 48 Sample Multiplier: 1

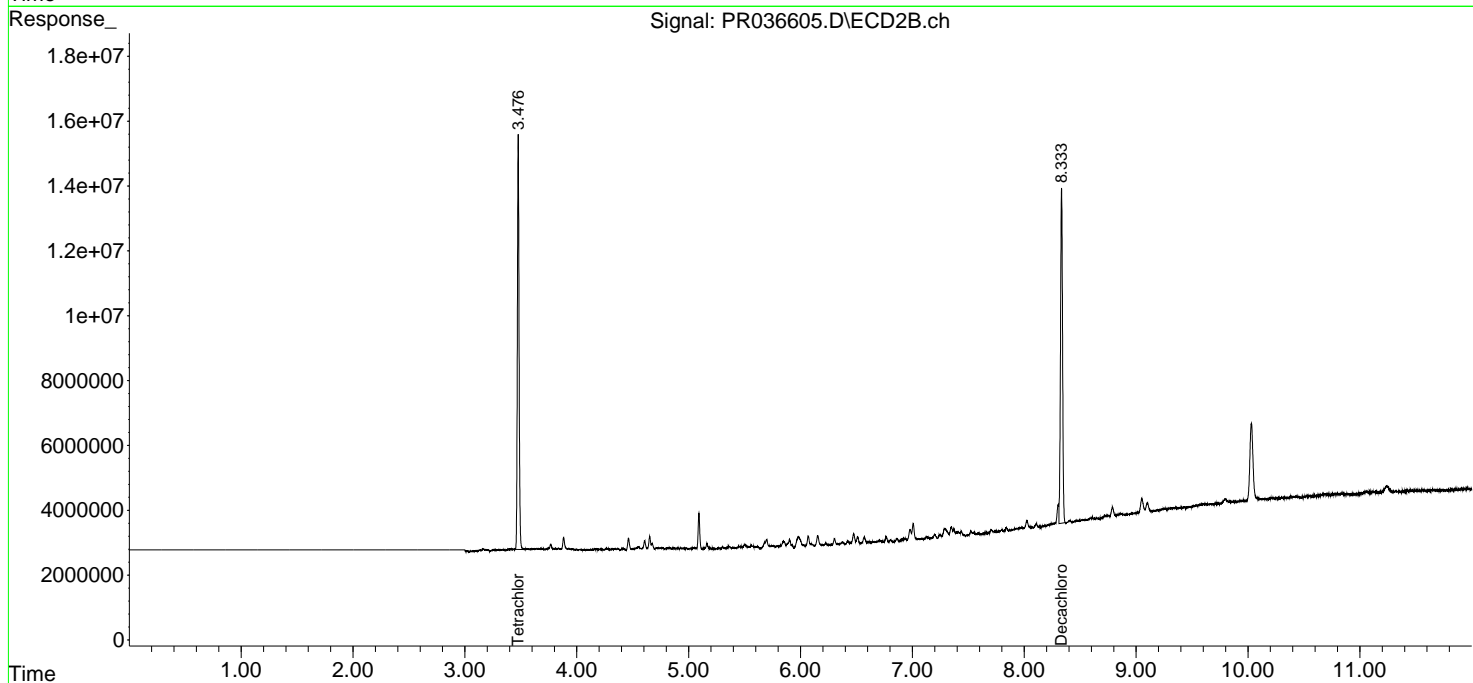
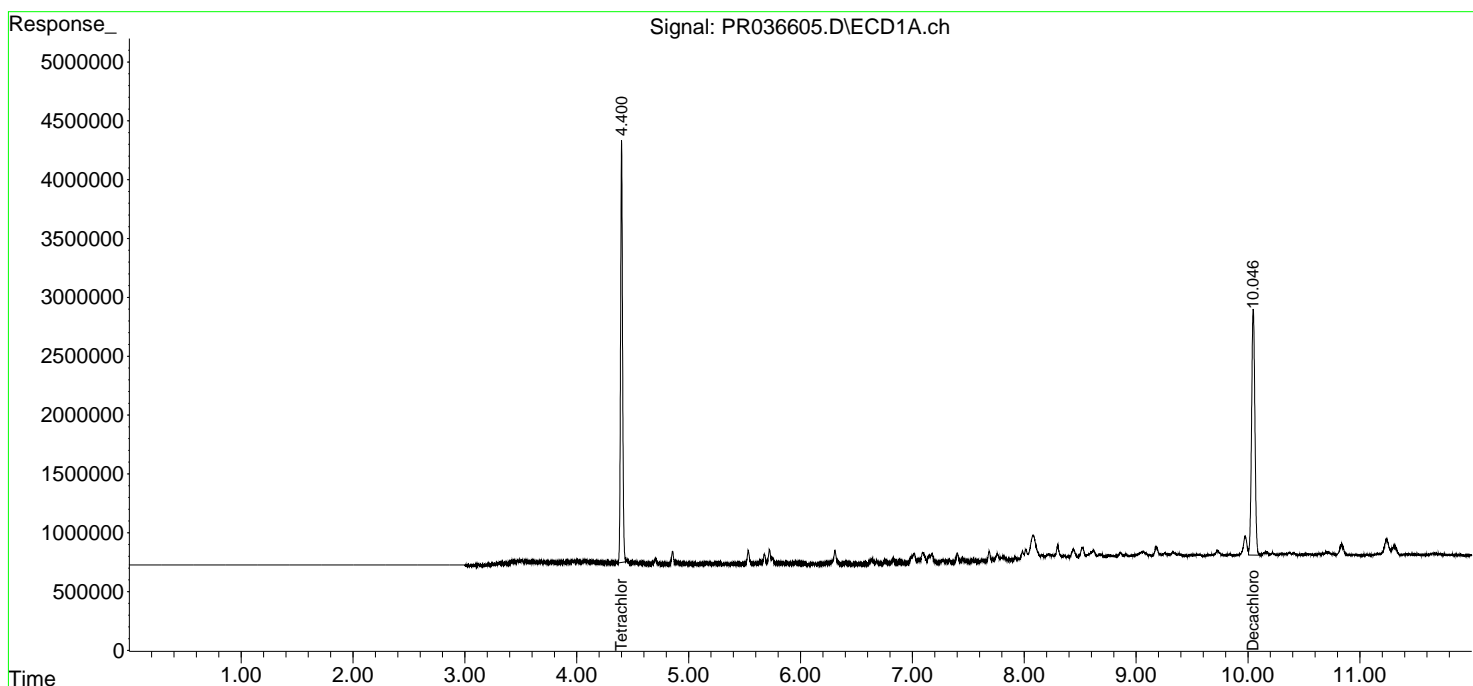
Instrument :
 ECD_R
 ClientSampled :
 S4B(2-10)

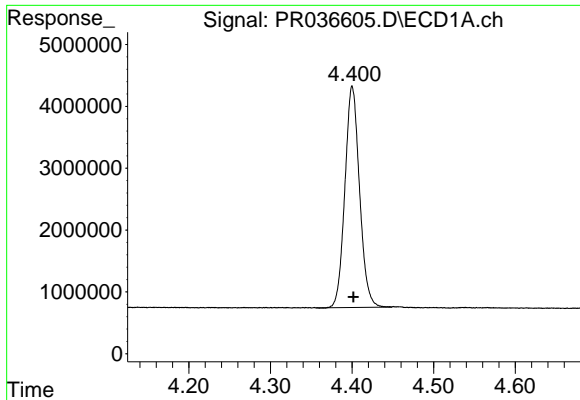
Manual Integrations
 APPROVED

Sohil
 3/26/2019 9:17:15 AM

Integration File signal 1: autoint1.e
 Integration File signal 2: autoint2.e
 Quant Time: Mar 23 04:30:59 2019
 Quant Method : Z:\pestpcbsrv\HPCHEM1\ECD_R\Method\PR032019.M
 Quant Title : GC EXTRACTABLES
 QLast Update : Wed Mar 20 15:19:33 2019
 Response via : Initial Calibration
 Integrator: ChemStation

Volume Inj. : 2 µl
 Signal #1 Phase : ZB-MR1 Signal #2 Phase: ZB-MR2
 Signal #1 Info : 30Mx0.32mmx 0.50µ Signal #2 Info : 30M x 0.32mm x 0.25µm

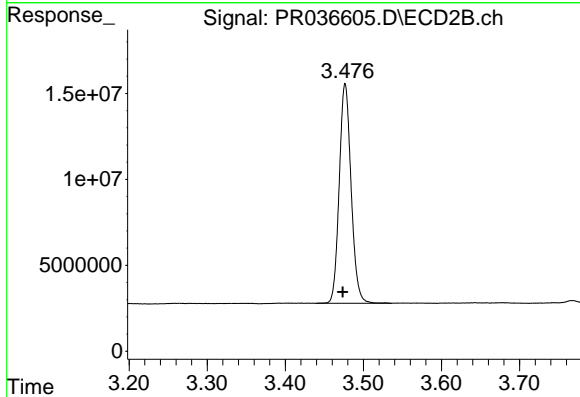




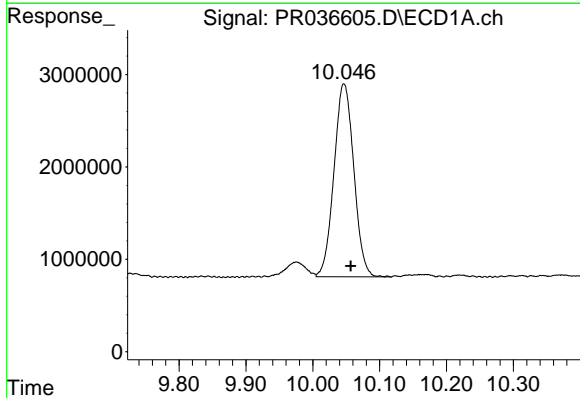
#1 Tetrachloro-m-xylene
 R.T.: 4.400 min
 Delta R.T.: -0.002 min
 Response: 44582217
 Conc: 29.46 ng/ml

Instrument :
 ECD_R
ClientSampleId :
 S4B(2-10)

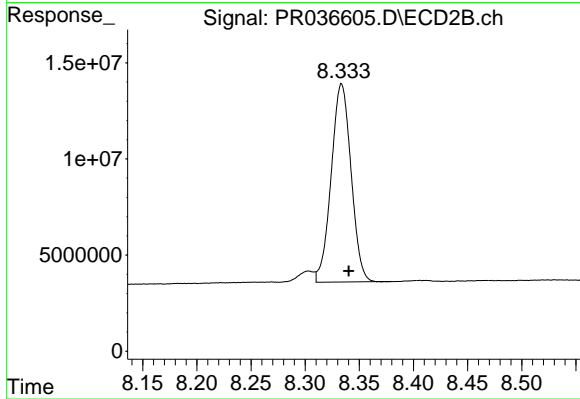
Manual Integrations
APPROVED
 Sohil
 3/26/2019 9:17:15 AM



#1 Tetrachloro-m-xylene
 R.T.: 3.477 min
 Delta R.T.: 0.003 min
 Response: 134804758
 Conc: 32.88 ng/ml



#2 Decachlorobiphenyl
 R.T.: 10.047 min
 Delta R.T.: -0.010 min
 Response: 43080409
 Conc: 24.58 ng/ml



#2 Decachlorobiphenyl
 R.T.: 8.333 min
 Delta R.T.: -0.007 min
 Response: 131039808
 Conc: 23.69 ng/ml m