

Data Path : Z:\pestpcbsrv\HPCHEM1\ECD_R\Data\PR032219\
 Data File : PR036616.D
 Signal(s) : Signal #1: ECD1A.ch Signal #2: ECD2B.ch
 Acq On : 23 Mar 2019 06:32
 Operator : SM\SJ
 Sample : K2004-05
 Misc :
 ALS Vial : 57 Sample Multiplier: 1

Instrument :
 ECD_R
ClientSampled :
 SB-24(7-8)

Manual Integrations
APPROVED

Sohil
 3/26/2019 9:17:27 AM

Integration File signal 1: autoint1.e
 Integration File signal 2: autoint2.e
 Quant Time: Mar 23 07:13:30 2019
 Quant Method : Z:\pestpcbsrv\HPCHEM1\ECD_R\Method\PR032019.M
 Quant Title : GC EXTRACTABLES
 QLast Update : Wed Mar 20 15:19:33 2019
 Response via : Initial Calibration
 Integrator: ChemStation

Volume Inj. : 2 µl
 Signal #1 Phase : ZB-MR1 Signal #2 Phase: ZB-MR2
 Signal #1 Info : 30Mx0.32mmx 0.50µ Signal #2 Info : 30M x 0.32mm x 0.25µm

Compound	RT#1	RT#2	Resp#1	Resp#2	ng/ml	ng/ml

System Monitoring Compounds						
1) SA Tetrachlo...	4.400	3.476	24798253	63476402	16.385	15.480m
2) SA Decachlor...	10.050	8.337	19969000	56905874	11.393	10.286m

Target Compounds

(f)=RT Delta > 1/2 Window (#)=Amounts differ by > 25% (m)=manual int.

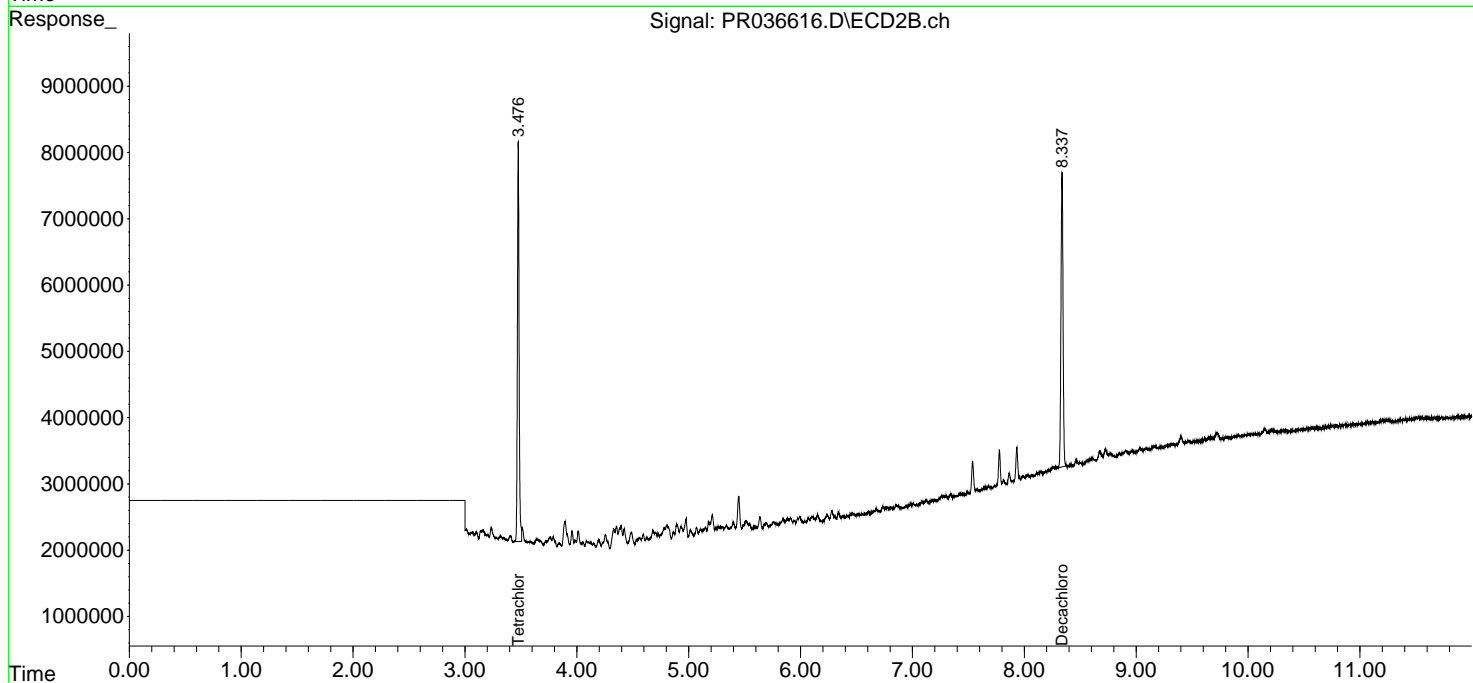
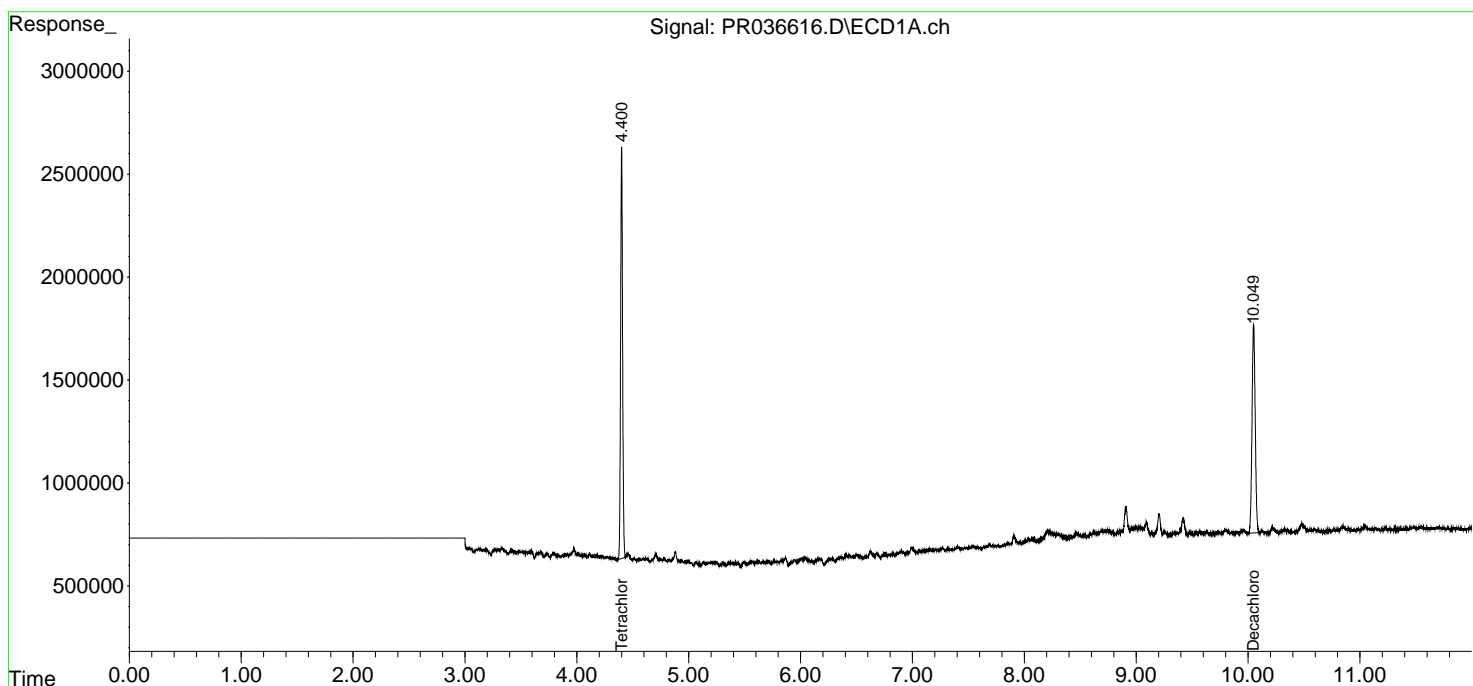
Data Path : Z:\pestpcbsrv\HPCHEM1\ECD_R\Data\PR032219\
 Data File : PR036616.D
 Signal(s) : Signal #1: ECD1A.ch Signal #2: ECD2B.ch
 Acq On : 23 Mar 2019 06:32
 Operator : SM\SJ
 Sample : K2004-05
 Misc :
 ALS Vial : 57 Sample Multiplier: 1

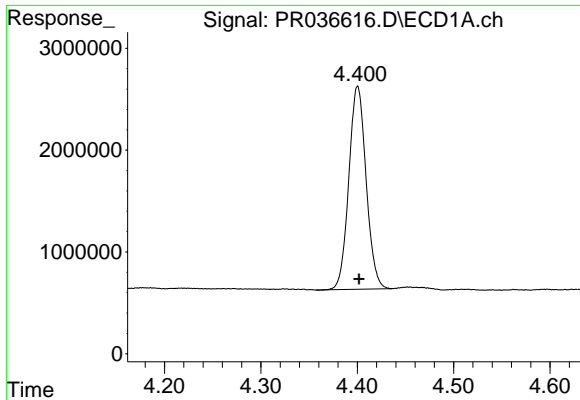
Instrument :
 ECD_R
Client Sampled :
 SB-24(7-8)

Manual Integrations
APPROVED
 Sohil
 3/26/2019 9:17:27 AM

Integration File signal 1: autoint1.e
 Integration File signal 2: autoint2.e
 Quant Time: Mar 23 07:13:30 2019
 Quant Method : Z:\pestpcbsrv\HPCHEM1\ECD_R\Method\PR032019.M
 Quant Title : GC EXTRACTABLES
 QLast Update : Wed Mar 20 15:19:33 2019
 Response via : Initial Calibration
 Integrator: ChemStation

Volume Inj. : 2 µl
 Signal #1 Phase : ZB-MR1 Signal #2 Phase: ZB-MR2
 Signal #1 Info : 30Mx0.32mmx 0.50µ Signal #2 Info : 30M x 0.32mm x 0.25µm

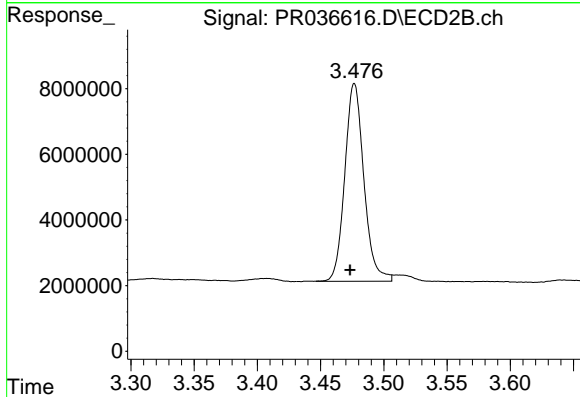




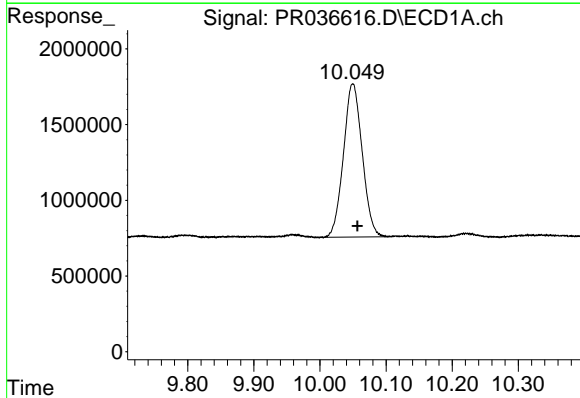
#1 Tetrachloro-m-xylene
R.T.: 4.400 min
Delta R.T.: -0.002 min
Response: 24798253
Conc: 16.38 ng/ml

Instrument :
ECD_R
ClientSampled :
SB-24(7-8)

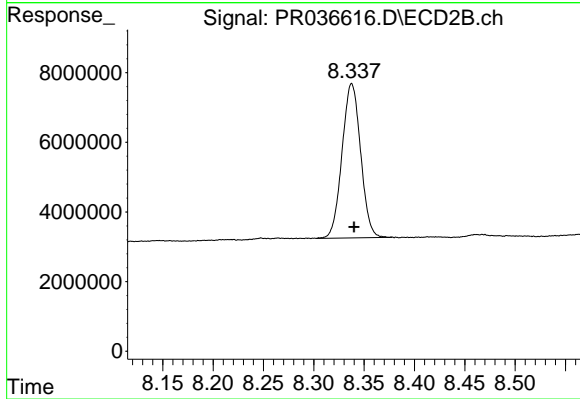
Manual Integrations
APPROVED
Sohil
3/26/2019 9:17:27 AM



#1 Tetrachloro-m-xylene
R.T.: 3.476 min
Delta R.T.: 0.003 min
Response: 63476402
Conc: 15.48 ng/ml m



#2 Decachlorobiphenyl
R.T.: 10.050 min
Delta R.T.: -0.007 min
Response: 19969000
Conc: 11.39 ng/ml



#2 Decachlorobiphenyl
R.T.: 8.337 min
Delta R.T.: -0.003 min
Response: 56905874
Conc: 10.29 ng/ml m