

Data Path : Z:\pestpcbsrv\HPCHEM1\ECD_R\Data\PR032219\
 Data File : PR036622.D
 Signal(s) : Signal #1: ECD1A.ch Signal #2: ECD2B.ch
 Acq On : 23 Mar 2019 10:18
 Operator : SM\SJ
 Sample : I.BLK
 Misc :
 ALS Vial : 2 Sample Multiplier: 1

Instrument :
 ECD_R
 ClientSampleId :
 I.BLK

Integration File signal 1: autoint1.e
 Integration File signal 2: autoint2.e
 Quant Time: Mar 25 00:53:15 2019
 Quant Method : Z:\pestpcbsrv\HPCHEM1\ECD_R\Method\PR032019.M
 Quant Title : GC EXTRACTABLES
 QLast Update : Wed Mar 20 15:19:33 2019
 Response via : Initial Calibration
 Integrator: ChemStation

Volume Inj. : 2 µl
 Signal #1 Phase : ZB-MR1 Signal #2 Phase: ZB-MR2
 Signal #1 Info : 30Mx0.32mmx 0.50µ Signal #2 Info : 30M x 0.32mm x 0.25µm

Compound	RT#1	RT#2	Resp#1	Resp#2	ng/ml	ng/ml

System Monitoring Compounds						
1) SA Tetrachlo...	4.397	3.470	26429849	84907314	17.463	20.707
2) SA Decachlor...	10.050	8.335	26535877	82398779	15.139	14.894

Target Compounds

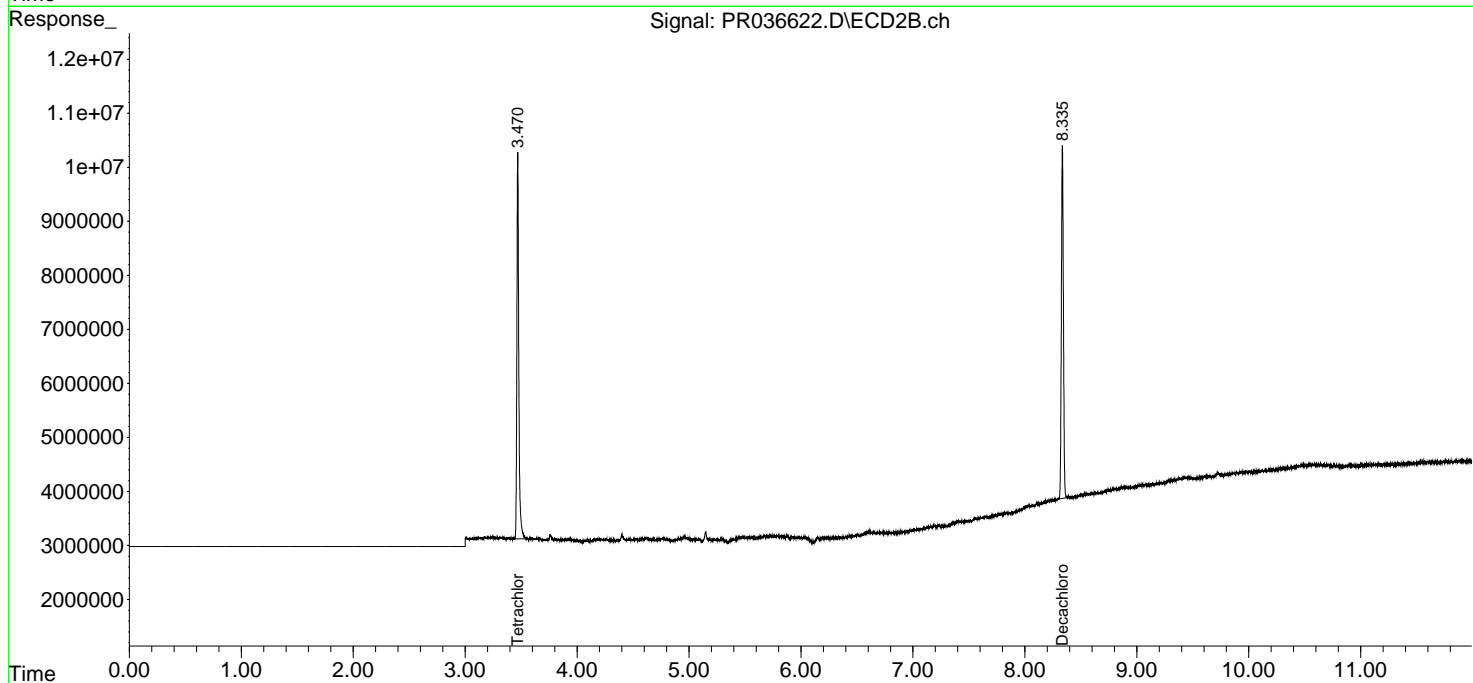
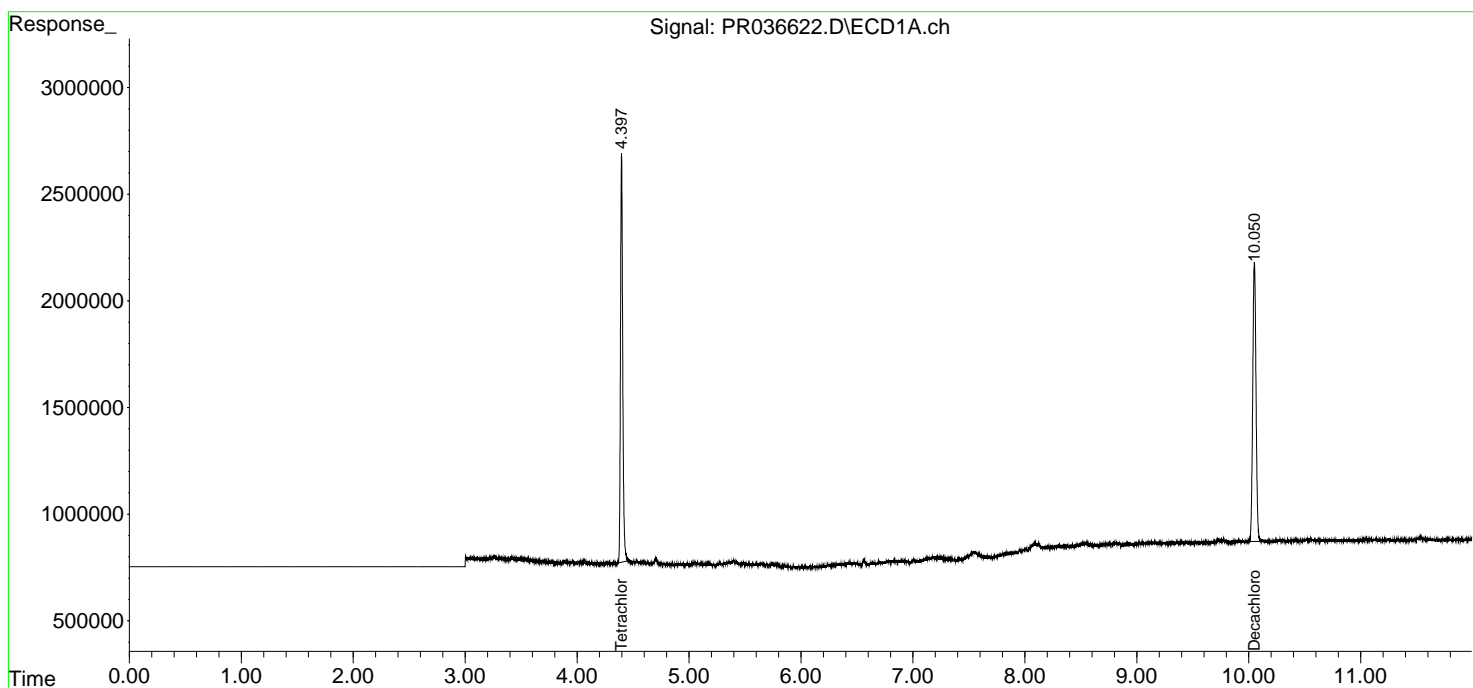
(f)=RT Delta > 1/2 Window (#)=Amounts differ by > 25% (m)=manual int.

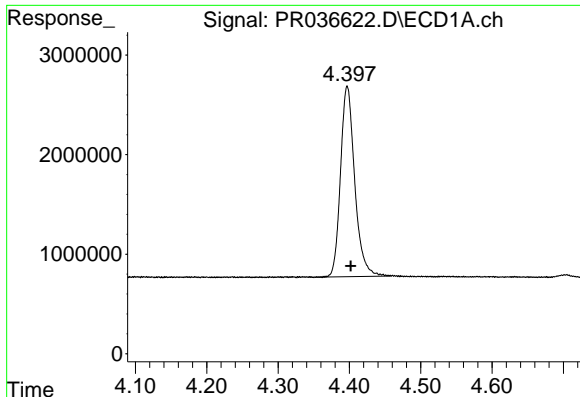
Data Path : Z:\pestpcbsrv\HPCHEM1\ECD_R\Data\PR032219\
 Data File : PR036622.D
 Signal(s) : Signal #1: ECD1A.ch Signal #2: ECD2B.ch
 Acq On : 23 Mar 2019 10:18
 Operator : SM\SJ
 Sample : I.BLK
 Misc :
 ALS Vial : 2 Sample Multiplier: 1

Instrument :
 ECD_R
 ClientSampleId :
 I.BLK

Integration File signal 1: autoint1.e
 Integration File signal 2: autoint2.e
 Quant Time: Mar 25 00:53:15 2019
 Quant Method : Z:\pestpcbsrv\HPCHEM1\ECD_R\Method\PR032019.M
 Quant Title : GC EXTRACTABLES
 QLast Update : Wed Mar 20 15:19:33 2019
 Response via : Initial Calibration
 Integrator: ChemStation

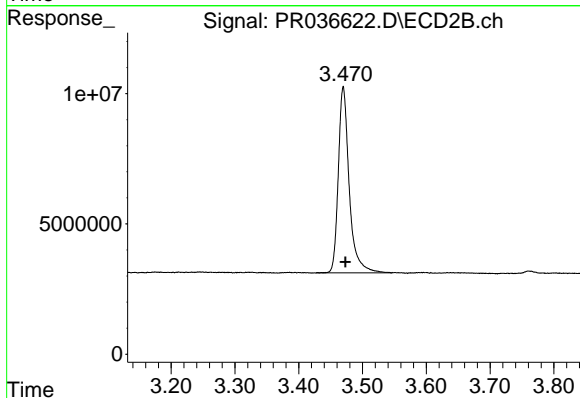
Volume Inj. : 2 µl
 Signal #1 Phase : ZB-MR1 Signal #2 Phase: ZB-MR2
 Signal #1 Info : 30Mx0.32mmx 0.50µ Signal #2 Info : 30M x 0.32mm x 0.25µm



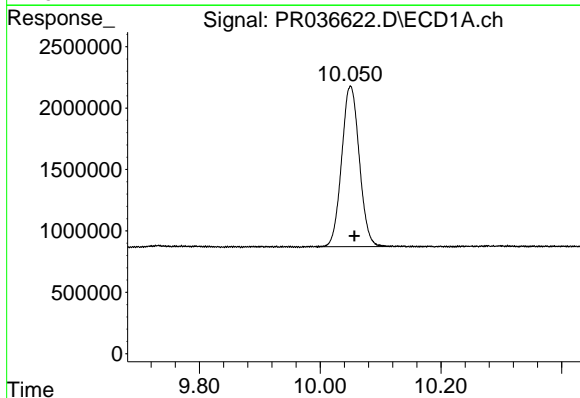


#1 Tetrachloro-m-xylene
R.T.: 4.397 min
Delta R.T.: -0.005 min
Response: 26429849
Conc: 17.46 ng/ml

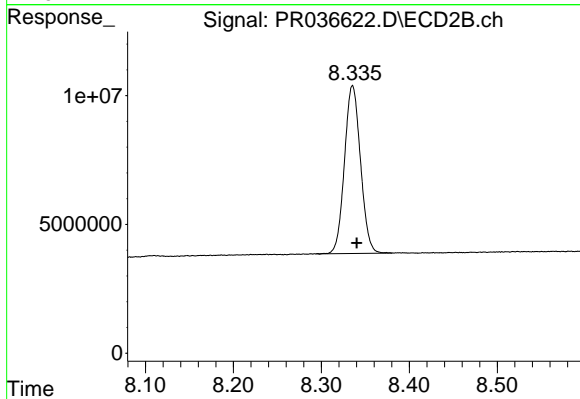
Instrument :
ECD_R
ClientSampleId :
I.BLK



#1 Tetrachloro-m-xylene
R.T.: 3.470 min
Delta R.T.: -0.004 min
Response: 84907314
Conc: 20.71 ng/ml



#2 Decachlorobiphenyl
R.T.: 10.050 min
Delta R.T.: -0.006 min
Response: 26535877
Conc: 15.14 ng/ml



#2 Decachlorobiphenyl
R.T.: 8.335 min
Delta R.T.: -0.005 min
Response: 82398779
Conc: 14.89 ng/ml